

www.fel.fujitsu.com



fi-5120C / fi-5220C **A4 document scanners**

- 30 ppm / 60 ipm (duplex) colour at 150 dpi in all colour modes
- **Unique:** Ultrasonic Doublefeed Detection
- **Unique:** Embossed Card scanning (ISO 7810)
- **New:** Advanced DTC setting for next-to perfect pages
- 50 page ADF
- A8 – A4 scanning (and extra long documents)
- Dual interface – Ultra SCSI / USB 2.0 selectable
- RoHS compliant

Bundled with

Adobe Acrobat® 7.0 Standard
for Microsoft® Windows® 2000 / XP

FUJITSU

THE POSSIBILITIES ARE INFINITE

A milestone in document scanning at the desktop

Fujitsu's new workgroup scanners – the **fi-5120C** and **fi-5220C**

The **fi-5120C / fi-5220C** desktop document scanners are loaded with all the functionality, speed, flexibility and reliability that throughout the past couple of years have convinced more than 50% of all document scanner operators worldwide to choose a Fujitsu document scanner for their desktop. Now, the **fi-5120C / fi-5220C** mark a milestone in professional document scanner use, even broadening the scope and scale of benefits you receive from Fujitsu's expertise in document scanner technology. The more you use the **fi-5120C / fi-5220C**, the more you'll love them!

Highest rated speeds within this scanner class for all colour modes

- 30 pages per minute in colour, greyscale and monochrome (150 dpi)
- 60 images per minute in colour, greyscale and monochrome (150 dpi)

Rated Speeds and flexibility of use

The **fi-5120C / fi-5220C** are the ideal scanners for small and mid-size businesses that need to archive documents, scan in reports to OCR or implement an efficient document management system. They are also perfectly suited for more sophisticated document management and workflow solutions, where scanners are needed at a single user or workgroup level. The **fi-5120C / fi-5220C** offer high speed scanning at up to 30 ppm or 60 ipm in both mono and colour (at 150 dpi), enabling users to reliably scan quantities of several hundred up to 1000 documents per day. The scanners' duplex capability enable the capture of both sides of the original document in just one pass, whilst the 50 sheet automatic document feeder (ADF) is ideal for unattended scanning of multi-page documents and batches, where paper sizes may vary from A8 to A4 or legal. The **fi-5120C**'s unique fold away output tray keeps footprint size to a minimum making it an ideal desktop scanner.

The **fi-5220C** combines the highly efficient ADF with an A4 size flatbed unit for scanning critical or historically valuable documents, photo materials, magazine pages or pages from books. When using the ADF, the flatbed unit's lid serves as a document batch stacker keeping even this devices footprint compact enough to be ideally placed on any desktop.



Paper or embossed card handling and reliable double feed detection

When professionally scanning documents, the least you will want to encounter is missing out on valuable information. The **fi-5120C** and **fi-5220C** ensure that every single page of a batch of documents will reliably feed through the scanners ADF. The scanners feature an absolute straight paper path, minimising physical stress on the paper itself, and the **fi-5120C / fi-5220C** will even permit you to regularly scan embossed plastic cards compliant to ISO 7810. Chances are high that neither will an individual sheet of paper ever be crumpled, nor will you encounter misfeeds.

The **fi-5120C / fi-5220C** are equipped with an ultrasonic double feed detection mechanism that will immediately interrupt the paper transport should it detect one or more sheets of paper being drawn into the paper path simultaneously. This might occur if two pages have been glued or stapled together, or if a sticky note has been attached to the document. This unique detection mechanism is unrivalled within the **fi-5120C / fi-5220C** class of document scanners and greatly improves reliability and ease of the scanning process.

Ultrasonic double feed detection



ENERGY STAR® compliant



Bundled with
Adobe Acrobat® 7.0 Standard
for Microsoft® Windows® 2000 / XP

Direct scanning to a vast range of formats and destinations

- Image formats, PDF format
- Scan to file, to view, to print, to fax, to email, to MS SpPS

A4 size flatbed unit plus ADF for fi-5220C



Fast data transfers

The fi-5120C / fi-5220C's dual interface leaves you the choice of attaching the scanner via SCSI-2 or USB 2.0, both connections providing abundant bandwidth for quickly transferring even high resolution data volumes to the application workstation.

Options for fi-5120C

An optional **imprinter** for the fi-5120C document scanner will allow for a 40 character stamp to be printed on the back of every scanned document, which can serve as proof that all documents have been scanned. For purpose of reference to the original document, the operator can select within the driver that a digital imprint is virtually affixed to every scanned image as well.



Productivity of document capture

The fi-5120C / fi-5220C offer high quality capture in mono, greyscale or colour at optical resolutions of up to 600 dpi, and a variety of processing functions enable the image enhancement of even the poorest quality original documents. The operator can select from a wide range of output file formats, including TIFF, JPEG, BMP and PDF, the open de facto standard for electronic file exchange and a likely future worldwide legal standard for archiving. A full version of Adobe® Acrobat® 7.0 Standard is included with the fi-5120C / fi-5220C. So with this package even commenting, digitally signing and forwarding documents to a group of recipients becomes easy and both scanner models allow referencing to original documents, when the operator chooses digital imprinting to be virtually affixed to every scanned image.

Quality of image data capture

The fi-5120C / fi-5220C combine both relevant dimensions of quality document scanning: speed and visibly good images.

In a professional environment scanning quickly becomes routine, so it should be fast without adding to the workload of the operator. At the same time, scanned documents should be transformed to visibly good quality images. This causes a dilemma that often enough is attempted to be overcome by supplying add-on image

enhancement software. Undoubtedly, these applications can greatly improve image quality but often enough they might also significantly increase the time needed for scanning, especially with higher resolutions in colour modes other than monochrome. Additionally, the rated speeds of those scanners then decrease dramatically.

Not so with the Fujitsu fi-5120C / fi-5220C. These scanners perform image processing and enhancement based on their own hardware when scanning – not afterwards. All enhancement functionalities are user selectable from within the included TWAIN and ISIS driver packages, directly influencing the scanners' actions.

Image Quality

Making use of the fi-5120C / fi-5220C for every day document capture can be designed exactly to the individual's needs. For this purpose not only the resolution, colour mode or output format can be defined, but the operator can select to apply functions like image emphasis, error diffusion, moiré removal, dithering, drop out colour definition, auto-cropping, de-skew, and background colour switching.

Furthermore, when scanning batches of documents in monochrome mode, the fi-5120C / fi-5220C supports the operator with the function of "Advanced Dynamic Threshold Control", which automatically optimizes every single page of the batch individually to its visible quality as well as to its usability for further processing tasks like OCR/ICR. The result of this function will deliver a perfect page – for every page.

Full Version Adobe Acrobat 7.0 Standard included



Scanning profiles and processes definable

- Access via scanner's operator panel

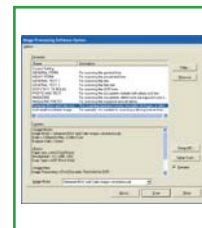
Options for fi-5120C / fi-5220C

In a scenario where different batches of alike documents are to be scanned regularly, Fujitsu's driver extension **SoftIPC V.2.5** can contribute to increasing scanning efficiency even further. This package enables defining and selecting monochrome mode scanning profiles that are optimized for different types of documents (invoices, newspapers, forms,) as well as virtually switching between different profiles before applying it to all pages of the document batch. Also, SoftIPC supports multi-streaming for creating monochrome and colour images simultaneously.

The fi-5120C / fi-5220C can be operated as a network device when attaching them to Fujitsu's **fi-5000N network adapter**. This unique device is the only network adapter that allows multiple users to access a shared scanner from within their regular archiving application, just as if it were directly attached to their workstation. Additionally, it provides secure network access by identifying fingerprints or ID codes of authorised personnel.



fi-5120C Imprinter



SoftIPC V.2.5



fi-5000N network adapter

RoHS compliant product

FUJITSU

THE POSSIBILITIES ARE INFINITE



fi-5120C / fi-5220C Specifications

Model	fi-5120C	fi-5220C
Scanner type	ADF (automatic document feeder)	ADF (automatic document feeder) + flatbed
Scanning modes	Simplex / Duplex, colour / grayscale / monochrome	
Image sensor type	Colour CCD (charge-coupled device) image sensor x 2	Colour CCD (charge-coupled device) image sensor x 3
Light source	White cold cathode discharge lamp	
Scanning range	Maximum: A4 (210 x 297 mm), legal	
	Minimum (portrait): A8 (52 x 74 mm)	
	–	Flatbed: Maximum: A4 (210 x 297 mm), letter
Paper weight (no limitation for flatbed)	52 g/m ² to 127 g/m ² and 127 g/m ² for A8 sheets	
Scanning speed (JPEG comp. values / A4 portrait)		
	Colour / Grayscale / Monochrome	Simplex: 30 ppm (150 dpi), Duplex: 60 ipm (150 dpi), Simplex: 25 ppm (200 dpi), Duplex: 50 ipm (200 dpi)
	Flatbed: Colour / Grayscale / Monochrome	–
		Approximately 1.7 sec (150 dpi), 2.2 sec (200 dpi)
Paper chute capacity	50 sheets (A4: 80 g/m ²) (active loadability)	
Background colours	White or Black (switchable)	ADF: White or Black (switchable) / Flatbed: white
Optical resolution	600 dpi	
Output resolution	50 to 600 dpi (adjust by 1 dpi increments)	
Output format	colour: 24 bit / 8 bit, grayscale: 8 bit, monochrome: 1 bit	
AD converter	1024 levels (10 bit)	
Interface	Ultra SCSI or USB 2.0 / USB 1.1 (Selectable / Terminator built in)	
Connector shape	SCSI: Shield type 50 pin (pin type), USB: B type	
Output mode (half-tone)	Dither / error diffusion	
Voltage range	AC 100 to 240 V, ±10%	
Power	Operating: fi-5120C 33 W or less / fi-5220C 38 W or less, Sleep mode: 6 W or less	
Operational environment	Temperature: 5°C to 35°C, Relative humidity: 20 to 80% (Non-condensing)	
Dimensions (W x D x H base unit)	301 x 168 x 158 mm	302 x 569 x 229 mm
Weight	3.8 kg	8.4 kg
Included drivers	TWAIN, ISIS™	
Environmental compliance	ENERGY STAR® and RoHS	
Others	Multi-feed detection	Ultrasonic Multi Feed Detection / Paper length
	Long paper scanning	864 mm
	Paper counter	Yes

fi-5120C / fi-5220C Options

	Parts number	fi-5120C	fi-5220C
Image processing software V2.5	PA43402-C2290	This image processing software enables the scanner to efficiently binarize scanned data prior to transmission.	
Imprinter option (fi-512PR)	PA03484-D201	Assists document management by printing numbers, Roman characters and codes on original documents after they have been scanned.	–
fi-5000N network adapter	PA03368-B001	Attach fi-5120C / fi-5220C via USB port to fi-5000N to enable secure fingerprint authorised network scanning in a "push-to-network" as well as in a client PC initiated "pull-from-network" scenario. Currently (as of October 2005) supported in fi-4120C2 emulation mode only. Generic fi-5120C / fi-5220C support scheduled for Q01/2006.	

fi-5120C / fi-5220C Consumables

	Parts number	fi-5120C	fi-5220C
Pad Assembly	PA03289-0111	Lifetime: 50,000 sheets or one year. These rubber parts separate documents being fed into the scanner to prevent multi-feeds. *	
Pick Roller	PA03289-0001	Lifetime: 100,000 sheets or one year. These rollers feed documents in the scanner. *	
Print Cartridge	CA00050-0262	Lifetime: 4,000,000 printed characters. fi-512PR print head.	–

Specifications are subject to change without notice. For the latest information, contact your local Fujitsu representative.

* According to scanner specifications



ENERGY STAR® compliant

"Adobe", "Acrobat" and the Adobe PDF logo are either registered trademarks or trademarks of Adobe Systems Incorporated in the United States and/or other countries.

Fujitsu Europe Limited
Hayes Park Central
Hayes End Road
Hayes Middlesex UB4 8FE
England
Tel: (+44-(0)20) 8573 4444
Fax: (+44-(0)20) 8573 2643
www.fel.fujitsu.com

Fujitsu Italia S.p.A.
Via Nazario Sauro, 38
20099 Sesto San Giovanni (MI)
Italy
Tel: (+39) 0226294.1
Fax: (+39) 0226294.201
www.fis.fujitsu.com

Fujitsu Deutschland GmbH
Frankfurter Ring 211
80807 Munich
Germany
Tel: (+49-(0)89) 32378-0
Fax: (+49-(0)89) 32378-100
www.fdg.fujitsu.com

