

TRIUMPH BOARD®

User Manual v 5.0

July 2012

DUAL Touch Series

TRIUMPH BOARD 96" DUAL Touch

TRIUMPH BOARD 89" DUAL Touch

TRIUMPH BOARD 78" DUAL Touch



DUAL Touch Series

DECLARATION OF CONFORMITY

We TRIUMPH BOARD a.s., Neklanova 122/15, 128 00 Praha 2

Declare under sole responsibility that the product:

TRIUMPH BOARD DUAL Touch Series

Model: 89" DUAL Touch / 78" DUAL Touch

EAN: 8592580101144, 8592580101168, 8592580101151, 8592580101175,

Is in conformity of essential requirements of EU/CZ directives:

Czech Standards	EU Standards
ČSN ETSI EN 301 489-1 V1.8.1:2008	EN 301 489-1 V1.8.1:2008
ČSN ETSI EN 301 489-3 V1.4.1:2003	EN 301 489-3 V1.4.1:2002
ČSN ETSI EN 300 440-1 V1.4.1:2009	EN 300 440-1 V1.4.1:2008
ČSN ETSI EN 300 440-2 V1.2.1:2009	EN 300 440-2 V1.2.1:2008
ČSN EN 50371:2002	EN 50371:2002
ČSN EN 60950-1 ed. 2:2006	EN 60950-1:2006

and following Governmental regulations, as amended:

Government Regulation No. 17/2003 Coll. as amended (2006/95/EC including amendments)

Government Regulation No. 616/2006 Coll. as amended (including amendments 2004/108/EC)

The last two digits of the year in which the CE marking was affixed: 11

Place of Issue: Praha

Datum of issue: 15th June of 2011



Ing. Ondřej Kryšpín, Chairman of the Board of Directors

Note: Translation from original CE

DUAL Touch Series

DECLARATION OF CONFORMITY

We TRIUMPH BOARD a.s., Neklanova 122/15, 128 00 Praha 2

Declare under sole responsibility that the product:

TRIUMPH BOARD DUAL Touch Series

Model: 96" DUAL Touch

EAN: 8592580091377

Is in conformity of essential requirements of EU/CZ directives:

Czech Standards	EU Standards
ČSN ETSI EN 301 489-1 V1.8.1:2008	EN 301 489-1 V1.8.1:2008
ČSN ETSI EN 301 489-3 V1.4.1:2003	EN 301 489-3 V1.4.1:2002
ČSN ETSI EN 300 440-1 V1.4.1:2009	EN 300 440-1 V1.4.1:2008
ČSN ETSI EN 300 440-2 V1.2.1:2009	EN 300 440-2 V1.2.1:2008
ČSN EN 50371:2002	EN 50371:2002
ČSN EN 60950-1 ed. 2:2006	EN 60950-1:2006

and following Governmental regulations, as amended:

Government Regulation No. 17/2003 Coll. as amended (2006/95/EC including amendments)

Government Regulation No. 616/2006 Coll. as amended (including amendments 2004/108/EC)

The last two digits of the year in which the CE marking was affixed: 11

Place of Issue: Praha

Datum of issue: 10th July of 2012



Ing. Ondřej Kryšpín, Chairman of the Board of Directors

Note: Translation from original CE

DUAL Touch Series

Content

Declaration of Conformity

1. Safety Information	5
2. Product description	9
3. Technical specification	10
4. Package content	13
5. Wall Mount installation	14
6. Software Installation	18
7. Hardware Installation	19
a. Connection	
b. Configuration	
c. Wireless setting	
d. Calibration	
e. User profile	
f. Hotkey setting	
g. Settings	
h. Language	
i. Auto Run	
8. MS Office Annotations	26
9. Warranty Service and Contact	27

DUAL Touch Series



DUAL Touch Series

1. Safety Information

Please read, understand and follow the information contained in this User Guide before installation and use this product.

Safety Information

This product was designed, and intended for use indoor via a USB cable or wireless USB receiver connected to a desktop or laptop computer. Use this product in an outdoor and/or wet environment could damage this product and create a potentially unsafe operating condition

Meaning of Signal Words	
 WARNING	Indicates a potential hazard that could result in serious injury or death and/or property damage.
 CAUTION	Indicates hazards that could result in minor or moderate injury and/or property damage.

WARNING

- Please read, understand and follow all safety information contained in this User Manual before installation and use this product.
- Do not use this product in an outdoor and/or wet environment.
- Do not use this product near water. Electric shock will result.
- This product is not intended for use by unsupervised children. Always provide proper adult supervision when using this product around children.
- At least two qualified service technicians should perform the installation and removal procedure. Failure to do so could result in serious personal injury and/or damage from dropping this product.
- Before installation, take the wall material and wall strength into consideration.
- Always place this product on a stable and level surface.
- Use only the designated wall mount and mobile stand hardware.
- Follow all installation instructions carefully.
- Make sure the mounting screws are properly sized to handle the weight of this product.
- Make sure the mounting hardware is securely anchored to a solid structure.
- Only plug the power cord, power plug or power adaptor into an AC power outlet with the proper and

DUAL Touch Series

Safety Information (Continue....)



indicated power supply voltage and is effectively grounded (earthed) through the normal wiring. If this product is used at a power supply voltage other than the one indicated, it would fail and may result in fire or electric shock.

- If the power cord or power plug or power adaptor cannot be plugged into the AC power outlet, contact a licensed electrician to replace the AC power outlet with a properly grounded (**earthed**) one.
- When you operate this product, the AC power outlet should be near this product and easily accessible.
- The fact that this product operates satisfactorily does not imply that the AC power outlet is grounded (**earthed**) and that the installation is completely safe. For your safety, if in any doubt about the effective grounding (earthling) of the AC power point, consult a qualified electrician.
- Do not defeat the purpose of the grounding (Earthling) plug (for example, do not use a conversion plug).
- Always plug the power cord, power plug or power adaptor securely and firmly into an AC power outlet. Otherwise, overheating will occur, possibly resulting in electric shock or fire.
- Do not pull, bend, rest objects on, or chafe the power cord or power plug or power adaptor. Damage to the power cord or power plug or power adaptor can cause fire or electric shock.
- Do not attempt to repair the power cord, power plug or power adaptor. If the power cord or power plug or power adaptor is damaged or frayed, contact an authorized service representative for a replacement.
- Periodically clean the power cord or power plug or power adaptor to ensure the connection is free of dust. In a damp environment, a contaminated connector can draw a significant amount of current that can generate heat and eventually cause fire if left unattended over an extended period of time.
- Never portable the power cord or power plug or power adaptor with wet hands. Electric shock will result.
- Stop operation immediately if your product emits smoke, excessive heat, abnormal smell or unusual noise. These conditions can cause fire or electronic shock. Immediately turn your product off and unplug the power cord or power plug or power adaptor, and contact an authorized service representative for service.
- When disconnecting this product, hold the power plug or the power adaptor instead of the power cord. Pulling on a power cord forcibly can damage it and cause fire or electric shock.
- To prevent fire or shock hazard, do not expose this product to rain or any type of moisture.
- If metal objects or a liquid get into this product, turn this product off and unplug this product immediately. Contact an authorized service representative for service. Operating the contaminated product can cause fire or electronic shock.
- Never open or remove unit covers that are screwed with screws. A high-voltage component can cause electric shock.
- Do not alter this product or modify any parts. Alteration or modification can cause fire or electronic shock
- Before cleaning this product, unplug the power cord or power plug or power adaptor. Electric shock sometimes results.

DUAL Touch Series

Safety Information (Continue....)



- Do not open or alter the casing of this product. Electric shock or injury may result.
- Be careful about the location of the power cord, power plug or power adaptor to avoid it trips someone or causing this product to fall, etc. It may cause injury or product failure.
- Do not leave this product or any of its accessories on the floor to avoid someone break it when stepping on it or injured by tripping on it.
- Use only the included power cord or power plug or power adaptor. If other power cord or power plug or power adaptor is used, fire or electric shock might result.
- Do not operate this product in a location with high temperature or high humidity. This product is suitable to work under: Temperature: 10°C to 40°C; Humidity: 10% to 80%; NO condensation.
- Unplug the power cord, power plug or power adaptor from the AC power outlet when:
 - The power cord or power supply plug is damaged.
 - A liquid is spilled onto this product.
 - This product is exposed to rain or water.
 - This product becomes malfunctions and/or need repairing.
 - This product falls or after its cabinet is damaged.



- This product must be disposed in accordance with the relevant federal, state, and local laws and regulations.
- Do not install this product except by qualified service personnel.
- Avoid fire and heat source above 100°C.
- When this product is not used over an extended period of time, switch it off and unplug the power plug or power adaptor. If it is unused and is left connected to a power source for a long period, degraded insulation may cause electronic shock, current leakage or fire.
- Do not position this product in a location where it is unstable.
- Do not place this product in a hot humid or dusty environment. Prolonged exposure to these adverse conditions may cause fire or electric shock.
- When moving this product, be sure to unplug the power cord, plug or power adaptor from the AC power outlet. If this product is moved with the power cord or plug or power attached, it can cause damage to the power cord, plug or power adaptor which could result in fire or electric shock.
- After installing or moving this product, lock the casters when it is hanging on a mobile stand.
- If this product is fallen down or damaged, turn this product off and unplug the power cord or power plug or power adaptor. Otherwise, it may cause fire or electric shock.
- Do not put drinks, other liquids or heavy items on the tray or screen. Accidental spillage of liquid into this product may cause severe damage. If this occurs, turn this product off, unplug the power cord or power plug or power adaptor and contact an authorized service representative for service.

DUAL Touch Series



- Do not lean against this product even this product is mounted on the wall.
- When this product is not used over an extended period of time, take the batteries out of the electronic stylus. Otherwise the batteries may leak. Do not use the leaked batteries.
- Do not install this product where it may be exposed to direct sunlight, near heating equipment, or near air-conditioning vents.
- Do not install this product in strong sunlight or strong lighting.
- Do not install this product in locations where the temperature may change suddenly.
- Do not allow writing to remain on the screen for an extended period of time as it will become harder to erase.
- Do not erase with an overly dirty eraser.
- Use commercially available whit board cleaner for hard-to-erase stains.
- Use only designated markers and erasers. Use of accessories other than those authorized (such as oil-based markers) may damage the screen or result in hard-to-erase markings.
- If you connect the wireless USB receiver to a USB hub, it is not guaranteed to work.
- Fasten the screws tightly to avoid the stand or this product fall which may cause injury or damage.
- Before installation, take the wall material and wall strength into consideration. For details, please consult your dealer.

DUAL Touch Series

2) Product Description

TRIUMPH BOARD DUAL Touch is an interactive whiteboard solution which enables two users to write and draw simultaneously. Four touch inputs enhances this technology - allows two users not only simultaneously write and draw, but also control two objects (resize, move, rotate) in same time. Truly multi-touch, requiring no separate multiuser mode setting. Users can write, draw and move objects with a finger, stylus or even a pointer.

TRIUMPH BOARD DUAL Touch connects to a computer through a fast USB 2.0 interface or optionally with wireless radio technology with 2,4 GHz, just plug-n-play, makes the lecture more interactively and enhances the efficiency of the class

TRIUMPH BOARD DUAL Touch supports Linux, Mac, all Microsoft Windows & multiuser writing and common multi touch gestures currently recognized in Microsoft Win-7. Use simple intuitive finger or hand gestures to toss, rotate or zoom in/out on objects

TRIUMPH BOARD DUAL Touch is based on IR Cell LED Optical technology which uses a combination of IR LEDs and photo transistors that are aligned in pairs around the active surface. These pairs of LEDs and photo transistors cast a grid over this surface. When the surface is touched, the beam of infrared light between the LEDs and the photo transistors is interrupted at the point of touch. This position is converted into an 'X' and a 'Y' coordinate which the computer then converts into a mouse position.

TRIUMPH BOARD DUAL Touch interactive whiteboards are used in classrooms at all levels of education, in corporate board rooms and training rooms, in professional sports coaching, etc. Interactive whiteboards replace traditional whiteboards, flipcharts and other traditional systems



DUAL Touch 96"



DUAL Touch 89"



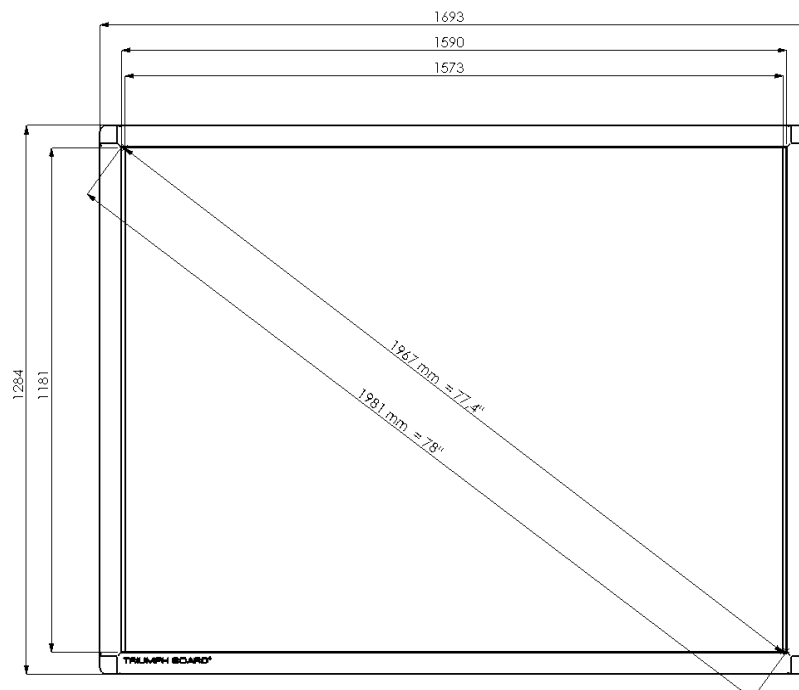
DUAL Touch 78"

DUAL Touch Series

3) Technical Specifications

TRIUMPH BOARD 78" DUAL Touch

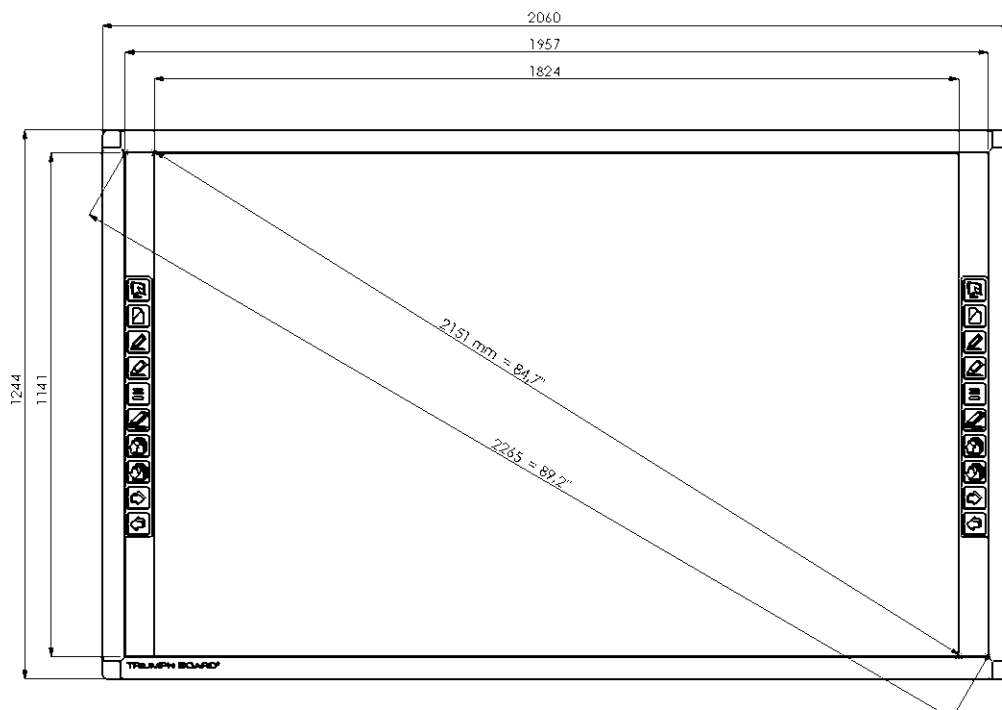
EAN:	8592580101144(78" USB only), 8592580101168 (USB/"wireless ready")
Active screen area size:	78" (1981 mm) diagonal
Aspect ratio:	4:3
Technology:	IR (Infrared) cell LED optical
Resolution:	12800x9600
Projection screen area:	1573 x1181 mm, 1967 mm diagonal
Board size without packing:	1693 x1284x31 mm (width x height x depth without plastic pen tray)
Interface Type:	USB 2.0 / 2.4 GHz RF Wireless (optional)
Cable Length:	6 m
Working Environment	-20 to 40°C
Response time:	6ms
Power supply:	USB DC 5V from PC (optional wireless PC receiver and USB adaptor /220V)
Power consumption:	< 250 mA (wireless PC receiver 20mA)
Temperature Range:	-20 to 40°C, storage temperature - 40 to 70°C
Humidity Operating	30-90% non condensing, storage 0-95%, non condensing
Platform:	Windows 7, XP and Vista, Linux, MAC
Board weight (net):	24 kg
Weight incl. packing:	30 kg
Warranty	2 years (5 years upon registration)
Optional:	Stand with Easy Lift system



DUAL Touch Series

TRIUMPH BOARD 89" DUAL Touch

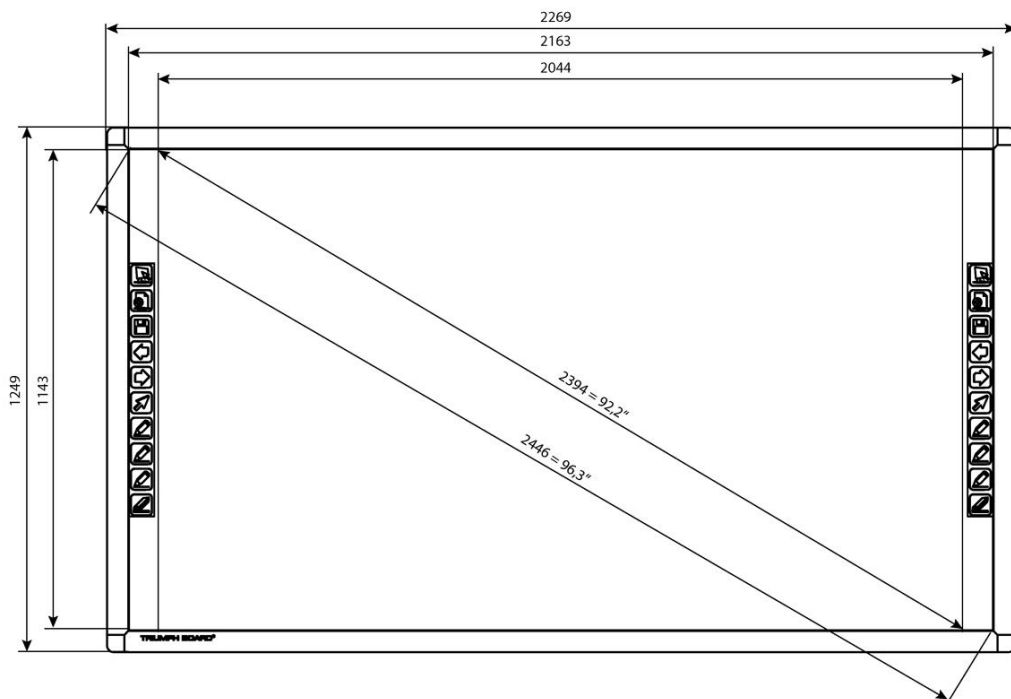
EAN:	8592580101175 (89" USB), 8592580101137 (89" USB/ "wireless ready")
Active screen area size:	89" (2265 mm) diagonal
Aspect ratio:	16:10
Technology:	IR (Infrared) cell LED optical
Resolution:	12800x9600
Projection screen area:	1824 x1141 mm, 2151 mm diagonal (with the hotkeys)
Board size without packing:	2060 x1244x31 mm (width x height x depth without plastic pen tray)
Interface Type	USB 2.0 / 2.4 GHz RF Wireless (optional)
Cable Length	6 m
Working Environment	-20 to 40°C
Response time:	6ms
Power supply:	USB DC 5V from PC (optional wireless PC receiver and USB adaptor /220V)
Power consumption:	< 250 mA (wireless PC receiver 20mA)
Temperature Range:	-20 to 40°C, storage temperature - 40 to 70°C
Humidity Operating:	30-90% non condensing, storage 0-95%, non condensing
Platform:	Windows 7, XP and Vista, Linux, MAC
Board weight (net):	28 kg
Weight incl. packing:	35 kg
Warranty:	2 years (5 years upon registration)
Optional:	Stand with Easy Lift system



DUAL Touch Series

TRIUMPH BOARD 96" DUAL Touch

EAN:	8592580091377 (USB / možnost bezdrátového připojení)
Active screen area size:	96" (2446 mm) diagonal
Aspect ratio:	16:9
Technology:	IR (Infrared) cell LED optical
Resolution:	12800x9600
Projection screen area:	2044 x1143 mm, 2394 mm diagonal (with the hotkeys)
Board size without packing:	2269 x1249x30 mm (width x height x depth without plastic pen tray)
Interface Type:	USB 2.0 / 2.4 GHz RF Wireless (optional)
Cable Length:	6 m
Working Environment:	-20 to 40°C
Response time:	6ms
Power supply:	USB DC 5V from PC (optional wireless PC receiver and USB adaptor /220V)
Power consumption:	< 250 mA (wireless PC receiver 20mA)
Temperature Range:	-20 to 40°C, storage temperature - 40 to 70°C
Humidity Operating:	30-90% non condensing, storage 0-95%, non condensing
Platform:	Windows 7, XP and Vista, Linux, MAC
Board weight (net):	28 kg
Weight incl. packing:	35 kg
Warranty:	2 years (5 years upon registration)
Optional:	Stand with Easy Lift system



DUAL Touch Series

4) Package contents

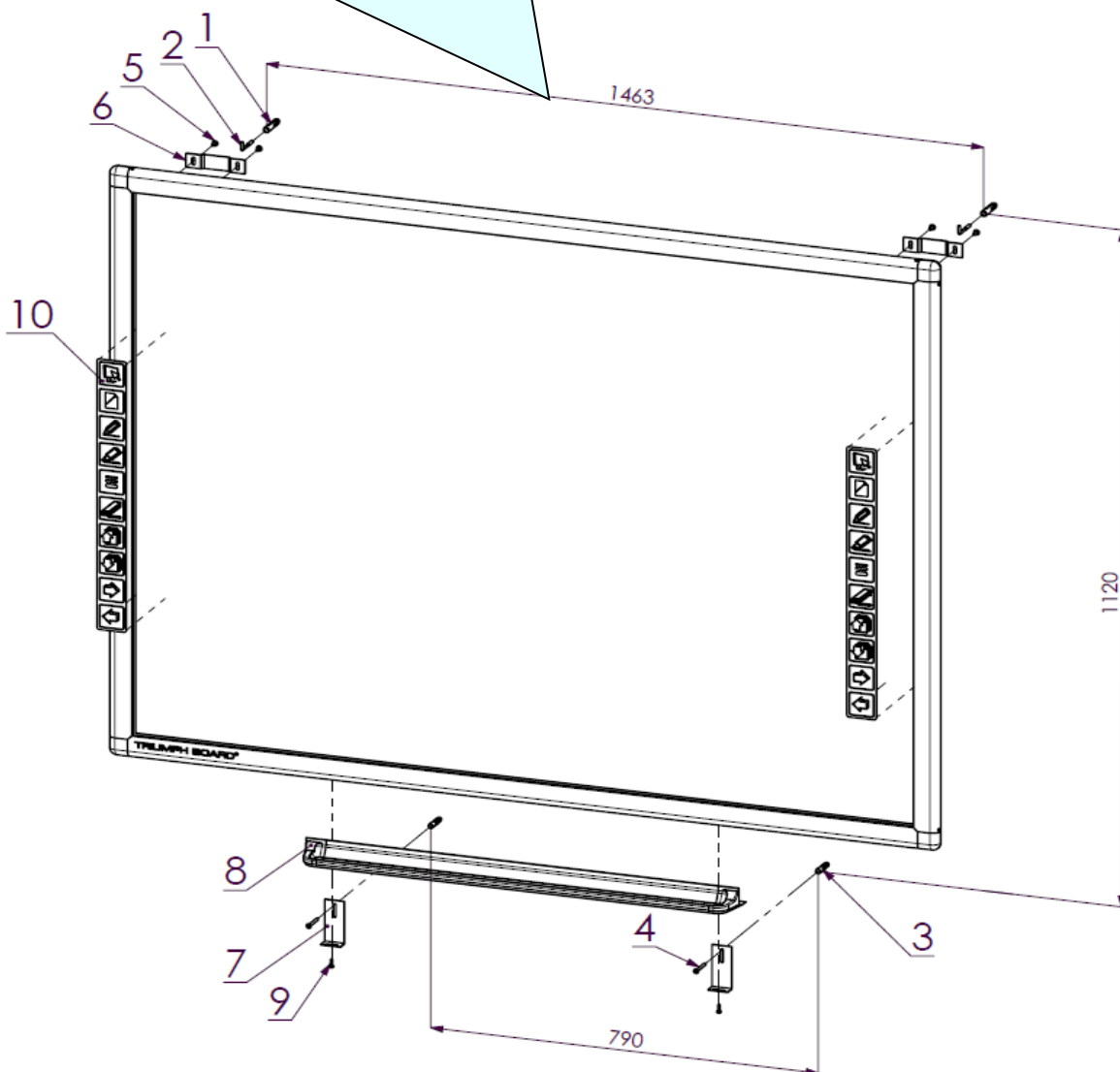
After unpacking, please make sure all of the following parts (subject to your purchase) are present

DUAL Touch – USB / Wireless ready		
Item	Description	Quantity
1	Whiteboard with built-in IR Sensor	1
2	USB Cable	1
3	Pen tray	1
4	Hotkey strip (78" 20*20 mm included / 89",96" 50*50 mm stick on the board)	2
5	Stylus (plastic pen)	2
6	Eraser	1
7	Hard Copy User Manual incl. mount instructions	1
8	TB Comenius – Software CD with soft copy user manual	1
9	MyScript Stylus - Software CD	1
10	RM Easiteach - Software DVD	1
11	Installation components set	1

DUAL Touch Series

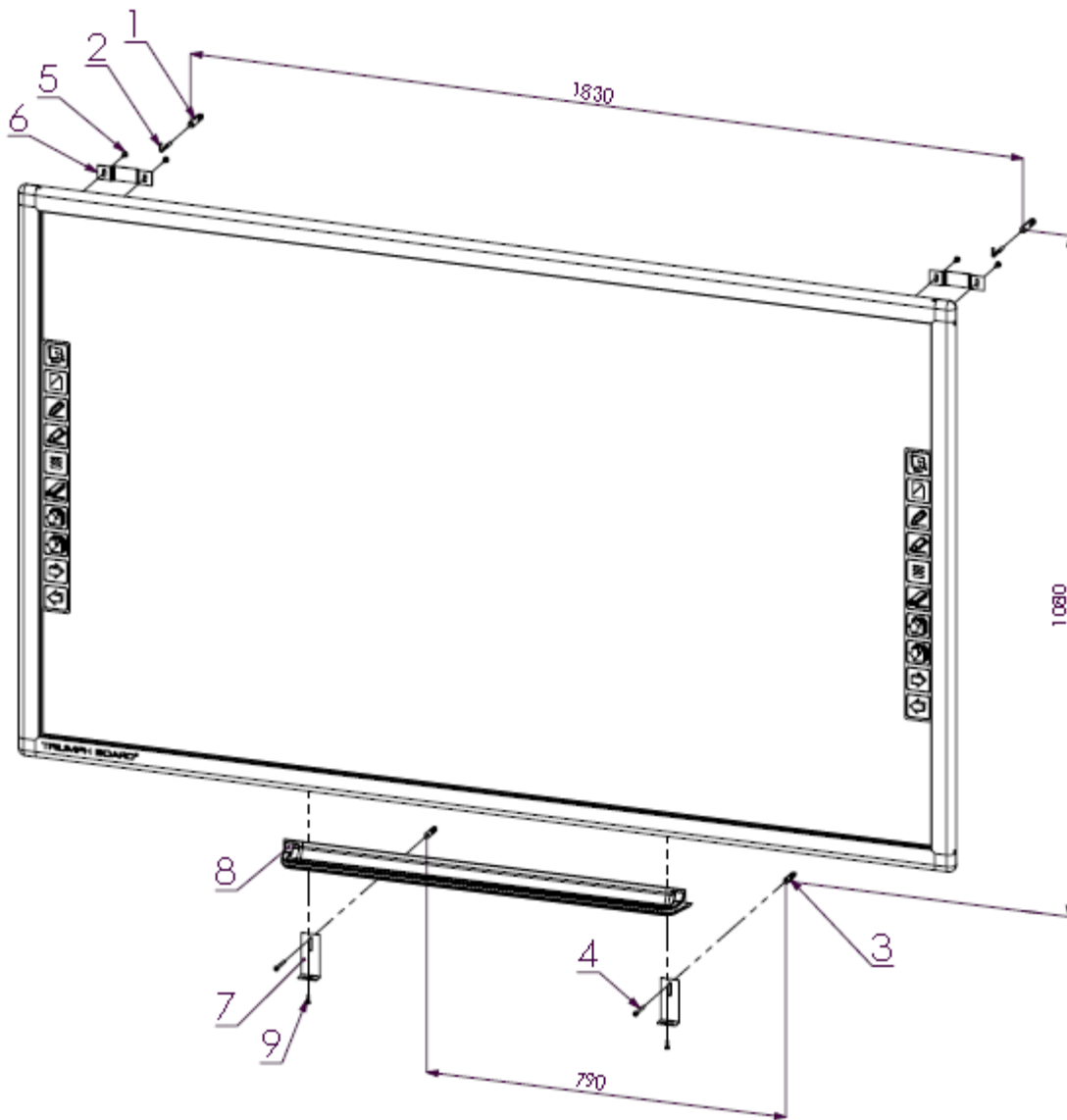
5) Wall mount Installation

1. **attach suspender (6) by screwing to board**
2. **measure the position of top hooks for hanging (2)**
3. **install dowels (1) and hooks (2)**
4. **install shelf (8) on board**
5. **measure and install dowels (3) and holders (7)**
6. **hang board**



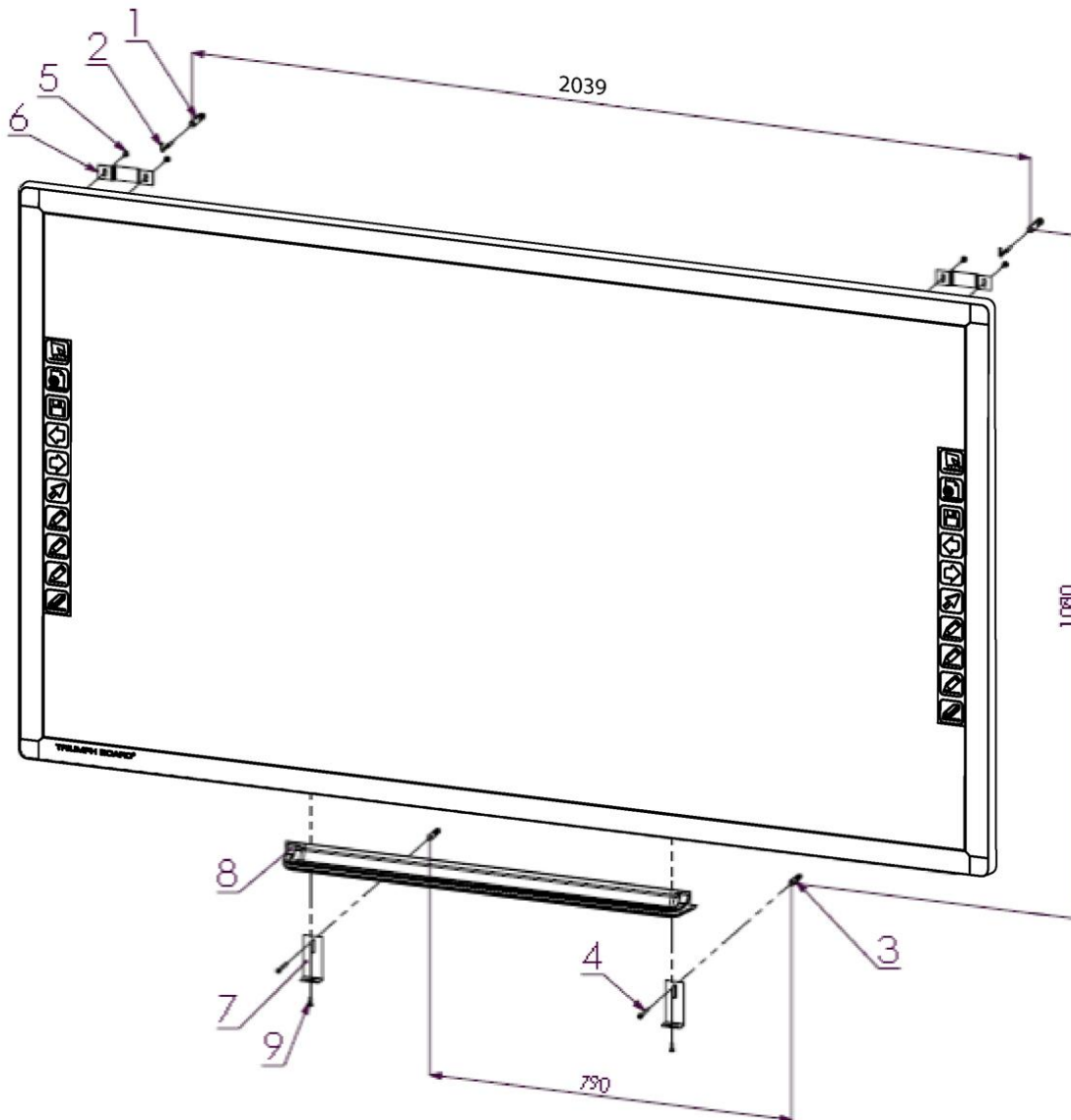
1	Anchors 12	6	Drape
2	Hook	7	Square
3	Anchors 10	8	Stand
4	Screw 5x50	9	Screw 4x16
5	Screw M5x12	10	Hotkeys

DUAL Touch Series



1	Anchors 12	6	Drape
2	Hook	7	Square
3	Anchors 10	8	Stand
4	Screw 5x50	9	Screw 4x16
5	Screw M5x12	10	Hotkeys

DUAL Touch Series



1	Anchors 12	6	Drape
2	Hook	7	Square
3	Anchors 10	8	Stand
4	Screw 5x50	9	Screw 4x16
5	Screw M5x12	10	Hotkeys

WARNING

- At least two qualified service technicians should perform the installation procedure. Serious personal injury and / or damage can result from dropping this product.

DUAL Touch Series

- BEFORE the installation, please make sure both wall material and wall strength are suitable
Otherwise, the board might fall which may cause injury and/or damage. Please consult your dealer for details.

- Use only the designated wall mount.

- Follow all installation instructions carefully.

- Make sure the mounting screws are properly sized to handle the weight of the board.

- Make sure the wall mount is firmly and securely anchored to a solid structure.

- Make sure the board is fastened firmly and securely to the wall mount before using it.



CAUTION

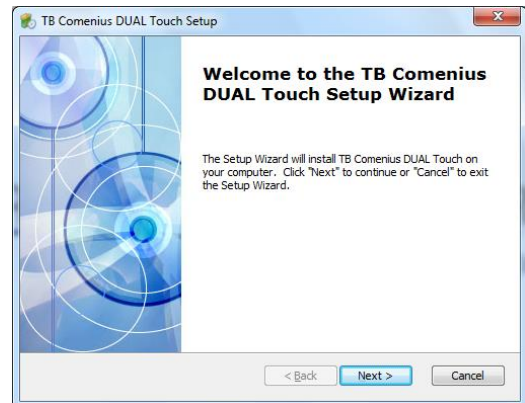
- Do not install this product in location where it may be exposed to direct sunlight, near heating equipment, or near air-conditioning vents.
- Do not install this product in strong sunlight or strong lighting location.
- Do not install this product in location where the temperature may change suddenly.
- Avoid to install two or more this product in the same room or adjacent to each other. Please consult your dealer for details.

DUAL Touch Series

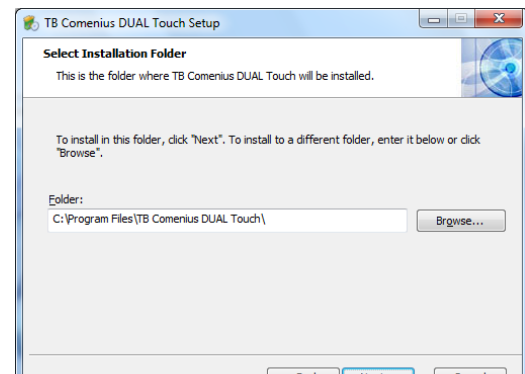
6) Software Installation

Install TB Comenius DUAL Touch software

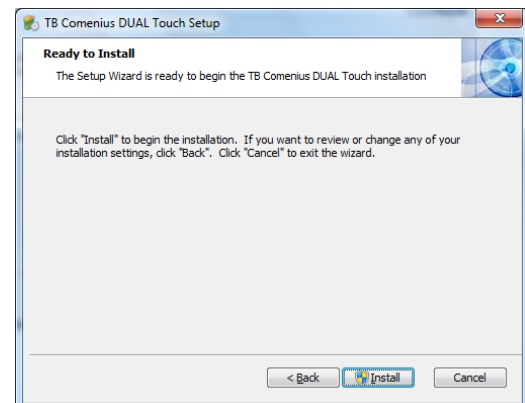
a) To run the Installation Program, double-click file “DUAL Touch install.exe” then click “Next” to install the software



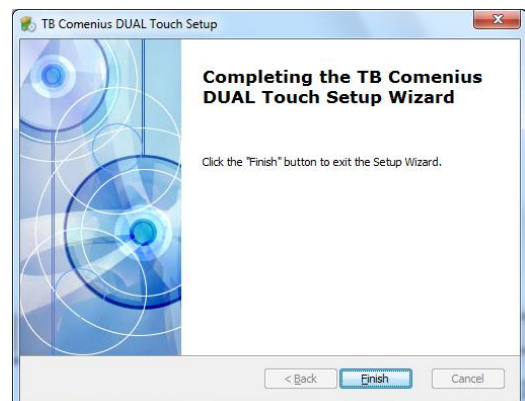
b) Choose destination location and click “Next” to continue.



c) Click Install



d) Click “Finish” to exit upon the DUAL Touch software has been successfully installed.



DUAL Touch Series

e) Connect your PC / laptop with the DUAL Touch by using USB cable (provided).



f) DUAL Touch - USB or DUAL Touch - Wireless Receiver has been detected and ready to use upon the following dialogue shown.

7) HW Installation

a) Connection

User must have PC, projector, DUAL Touch - USB or DUAL Touch - Wireless Receiver and connect them as shown in the figure below.

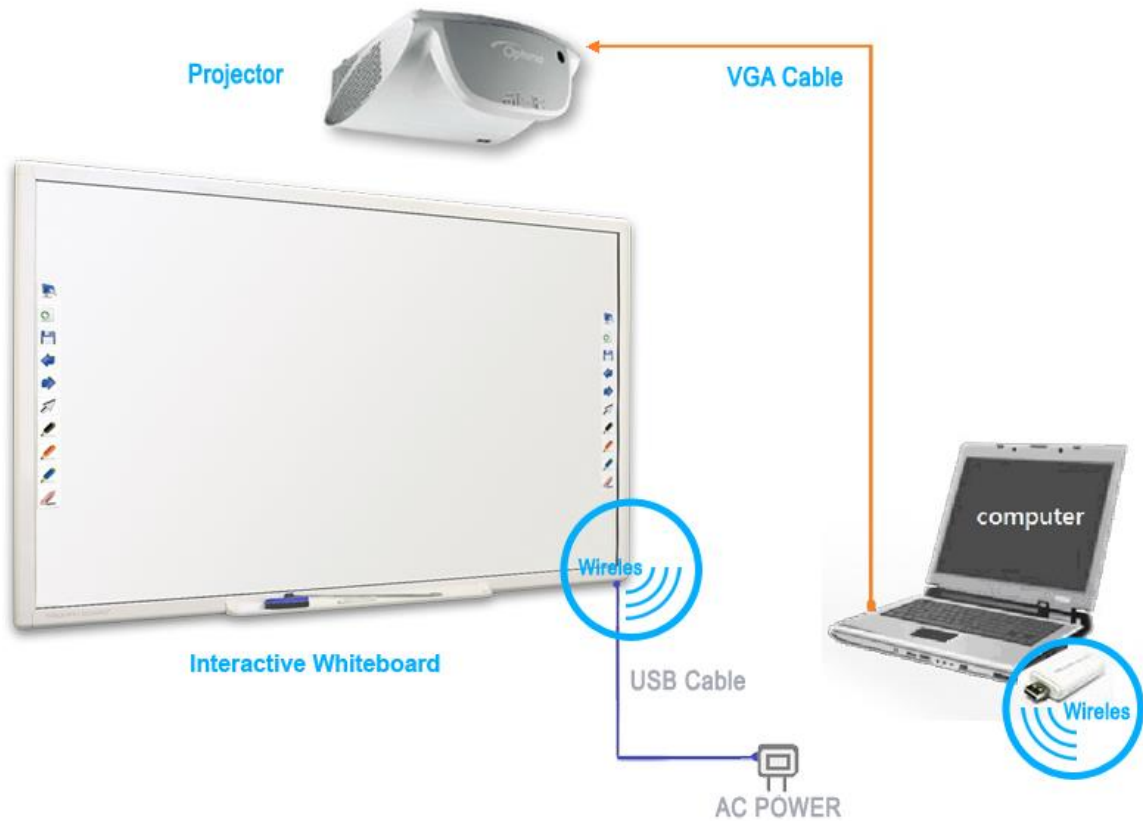
DUAL Touch – USB/ Wireless ready - Model Connection Diagram



DUAL Touch Series

DUAL Touch - Wireless Model Connection Diagram

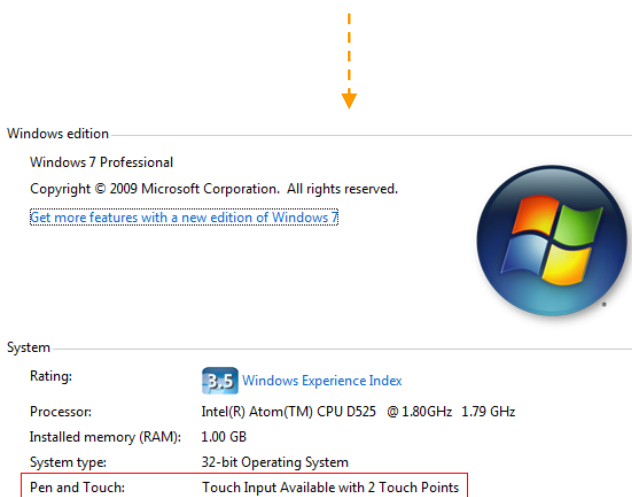
Upon the connection is completed, adjust the position of the video projector until the projected Windows screen on the board is within the whiteboard working area.



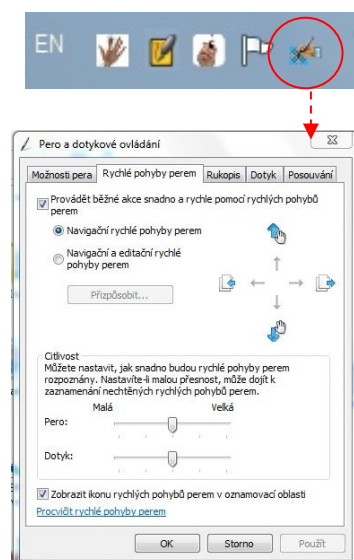
b) Configuration (for Vista & Windows-7)

- Connect USB cable with DUAL Touch and PC (with OS Windows-7)

Check computer properties



Multi - DUAL Touch Gesture Recognition setting



DUAL Touch Series



DUAL Touch configuration Main Manual

Right click the icon to show the Main Menu of DUAL Touch configuration.



c) Wireless Setting

For wireless use you need to order **Wireless Upgrade Kit** (EAN 8592580091216) which includes USB Wireless Receiver and Power Adaptor. Wireless option is available only for the DUAL Touch USB / Wireless ready models (EAN: 8592580101168, EAN: 8592580101175)

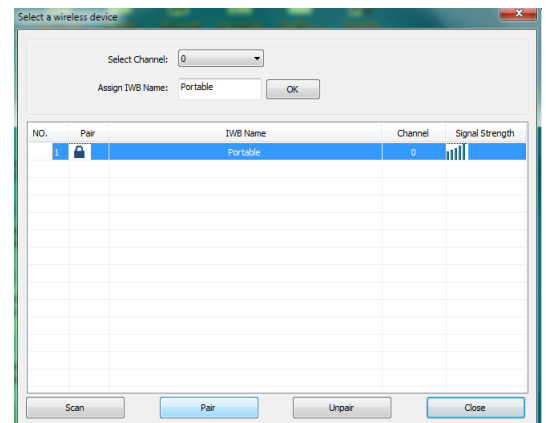
30 wireless channels are available for selection.

To change channel or pairing your DUAL Touch board, click “scan” then the detected sensors will show onto the table.

Select the “IWB Name” onto the list and click “Pair” to make pairing for the Receiver and Sensor. This is recommended to rename for the Sensor unit after you made pairing so as not to mix up with other sensors those installed nearby.

Click “Un-pair” to release channel lock.

Make sure to click “Un-pair” and re-do pairing if Sensor Unit or Wireless Receiver has been changed.



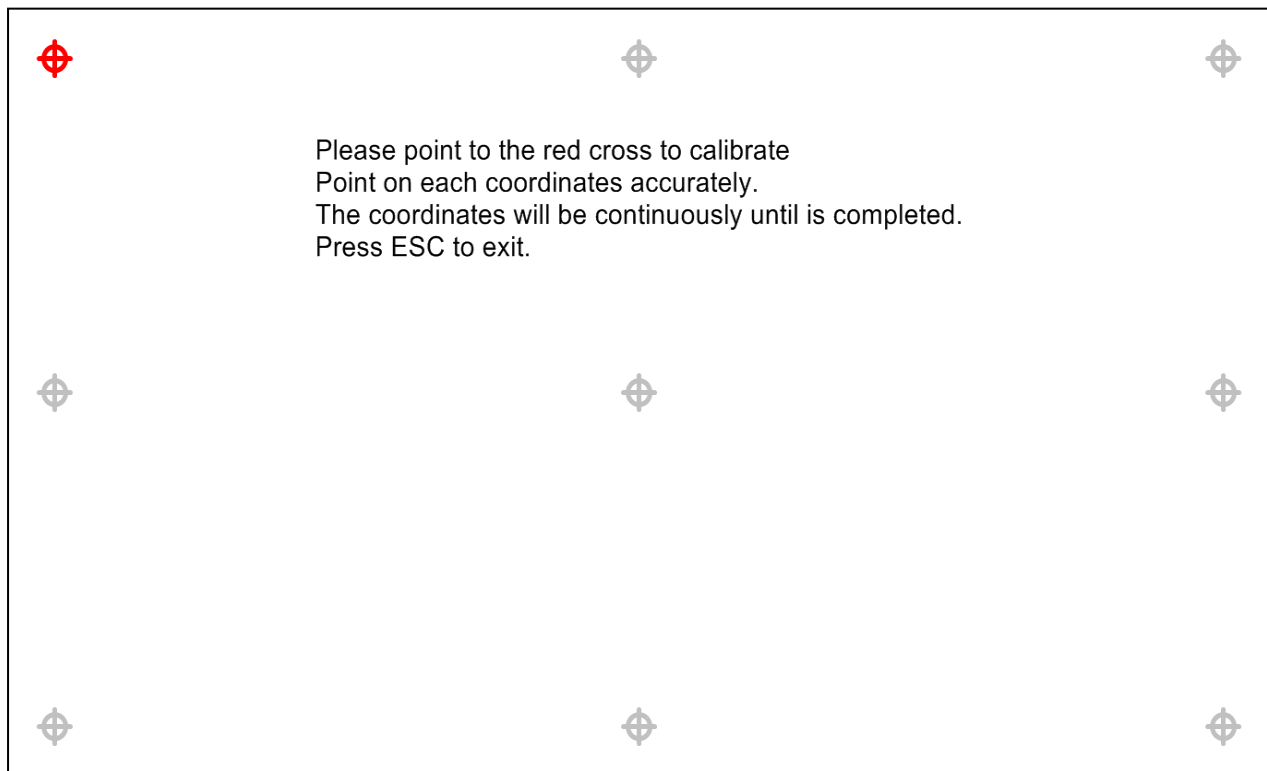
**IWB = Interactive White Board*

d) Calibration

Calibration for DUAL Touch after first time installation or projector size and projector’s position has changed.

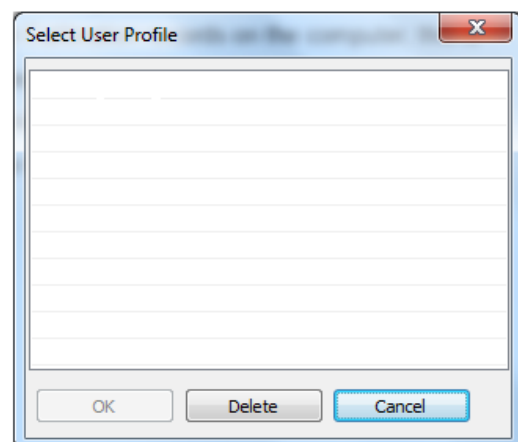
Click the flashing cross to calibrate, press ESC to exit. Point on each coordinates accurately. The coordinates will be moved continually until the calibration is completed.

DUAL Touch Series



e) User profile

When Calibration records on the computer, this is not necessary to re-do at the same room with same computer. User just simply selects the calibration profile from the record.



User can select location profile when using DUAL Touch in the same location next time.

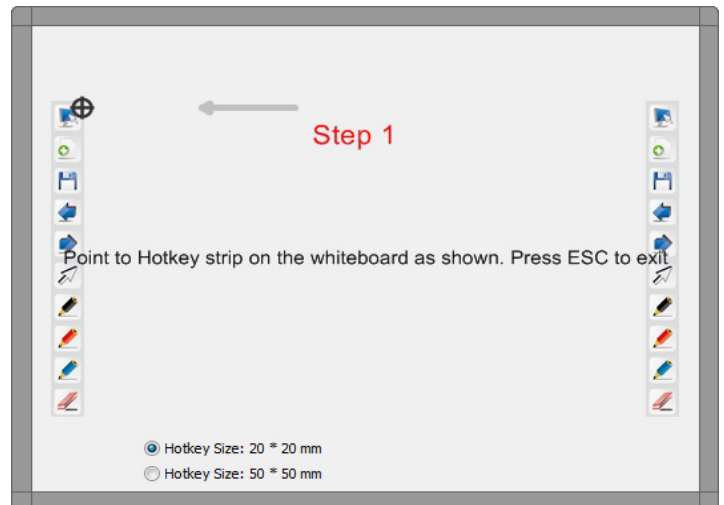
DUAL Touch Series

f) Hotkey Setting

20 hotkey features is available for user to setup.

Steps are as following:

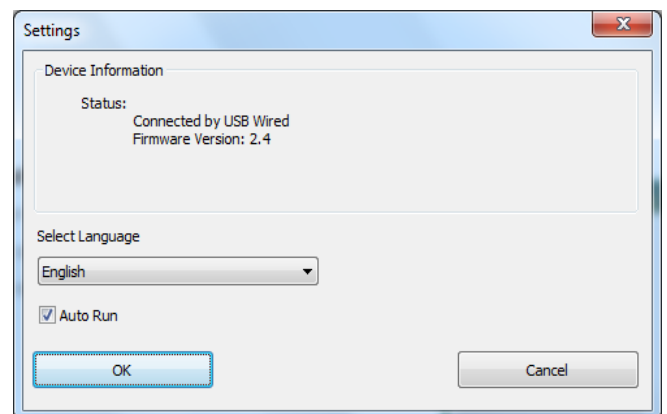
- 1) Click on Tools in main program menu and choose Calibration Hotkeys
- 2) Choose Hotkey Size – 20*20 mm for small Hotkey Strip (icons size 20*20 mm) or 50*50 mm for big Hotkey Strip (icon size 50*50 mm)
- 3) Use stylus to point Hotkey strip icons according to black/red target (for small Hotkey Strip point each Hotkey strip icon, for big Hotkey strip point only top and bottom of Hotkey strips).



g) Settings

Device Information

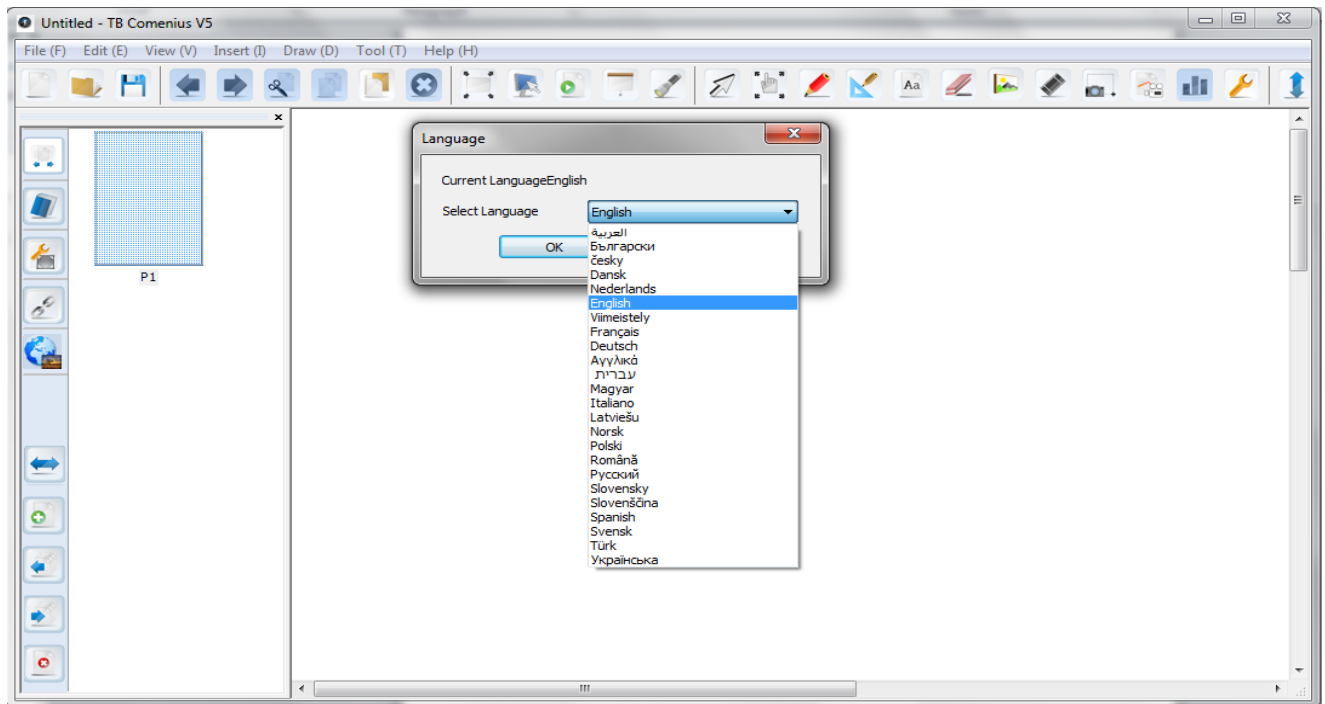
When successfully connected computer with whiteboard system, device information such as wireless or USB version and firmware version info will be shown.



h) Language

You can choice one of the 25 language localizations under Menu/View/Language

DUAL Touch Series



i) Auto Run

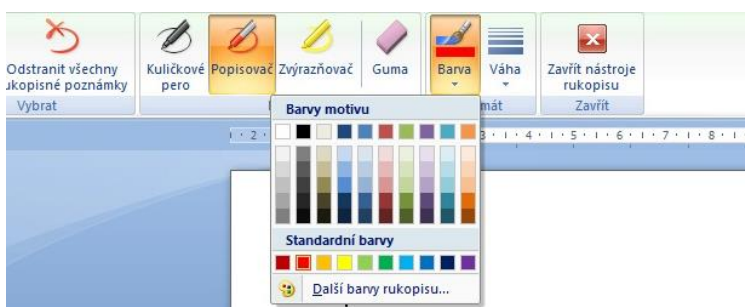
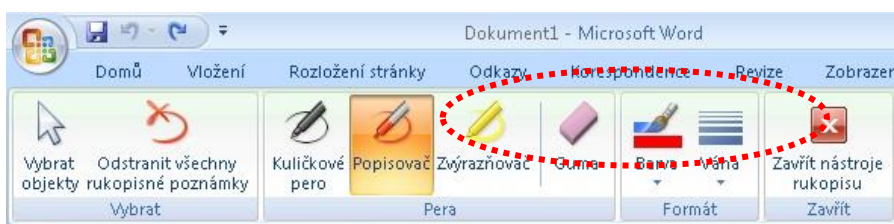
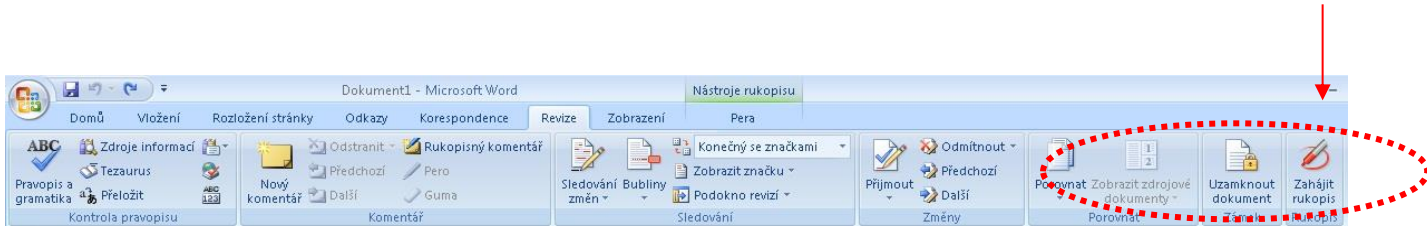
User once enable the auto run, the DUAL Touch board driver will automate start in each restart windows.

If DUAL Touch board is not every day to use can choose to disable auto run.

DUAL Touch Series

8) MS Office Annotations (only for Vista & Windows-7)

Microsoft office Annotations toolbar will be appeared upon the DUAL Touch connected with the your PC



DUAL Touch Series

9) Warranty Service and Contacts

Please contact your local supplier for the warranty and technical service or find all warranty conditions and service partners on our website www.triumphboard.com . For any questions please email us to info@triumphboard.com

TRIUMPH BOARD a.s.

Neklanova 122/15

128 00 Praha 2

Czech Republic

EU

Phone: +420 224910221

Fax: +420 224910218

E-mail: info@triumphboard.com

www.triumphboard.com

Notices

Every effort has been made to ensure all information contained in this user guide is correct, but the accuracy or completeness is not guaranteed. Before using this product, you must evaluate it and determine if it is suitable for your intended application. You assume all risks and liability associated with such use. Any statements related to this product which is not contained in this manual or any contrary statements contained on your purchase order shall have no force of effect unless expressly agreed upon, in writing, by this company.

Without this company permission, reproduction or reprinting this user guide or any part is prohibited.

The contents of this user guide are subject to change without prior notice.

PLEASE see our website www.triumphboard.com for updates and fresh product information in the product and support sections.