



Government  
of Canada

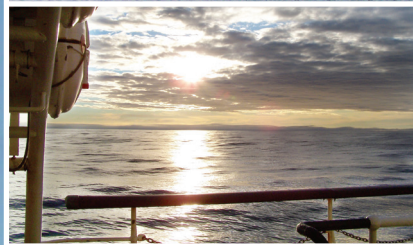
Gouvernement  
du Canada

Canada

# Partial Submission of Canada to the Commission on the Limits of the Continental Shelf

regarding its continental shelf in the Atlantic Ocean

## Executive Summary



© Her Majesty the Queen in Right of Canada, 2013

---

Cover (clockwise from left):

- CCGS *Hudson* off the Labrador coast, photo: Calvin Campbell
- Nova Scotia geology, photo: Robert Fensome
- Cape Spear and St. John's harbour, Newfoundland and Labrador, photo: David Mosher
- Sunset off Labrador as seen from the CCGS *Hudson*, photo: Calvin Campbell

Acknowledgement

Regional bathymetric and topographic maps were generated with the GEBCO\_08 Grid, version 20100927 ([www.gebco.net](http://www.gebco.net)).

Ce document est aussi disponible en français.

Cat. No.: FR5-82/1-2013E

ISBN: 978-1-100-22785-6

Partial Submission of Canada to the Commission on the  
Limits of the Continental Shelf regarding its continental  
shelf in the Atlantic Ocean

---

## Part I - Executive Summary

CDA-ATL-ES

## **Contents**

1. Introduction.....	3
2. Notes.....	4
3. Members of the Commission who provided advice during the preparation of the submission.....	4
4. Provisions of article 76 invoked in support of the submission.....	4
5. General description of the continental margin in the Atlantic Ocean.....	4
6. Description of the outer limits of the continental shelf in the Atlantic Ocean.....	6
7. Maritime delimitation in the Atlantic Ocean.....	7
<b>Figures</b> .....	10
<b>Appendices</b> .....	17



## 1. Introduction

Canada signed the 1982 United Nations Convention on the Law of the Sea on the day it was opened for signature and ratified it on 7 November 2003. The Convention entered into force for Canada on 7 December 2003.

As reflected in article 77 of the Convention, the rights of a coastal state over its continental shelf exist *ipso facto* and *ab initio*. In this respect, the Convention mirrors Canada's long-standing position, based on international law and state practice, as well as Canadian legislation and practice regarding the exercise of its sovereign rights and jurisdiction over its continental shelf. The current definition of the continental shelf in Canadian legislation is found in section 17 of the *Oceans Act*, enacted in 1996. This definition refers to the seabed and subsoil that extend beyond the territorial sea of Canada throughout the natural prolongation of the land territory of Canada to the outer edge of the continental margin, determined in a manner under international law that results in the maximum extent of the continental shelf of Canada, or to 200 nautical miles (M) from the baselines from which the breadth of the territorial sea is measured where the outer edge of the continental margin does not extend to this distance.

This is a partial submission that fulfills the obligation of Canada pursuant to article 76(8) and article 4 of Annex II of the Convention to submit information on the limits of the continental shelf beyond 200 nautical miles from the baselines from which the breadth of the territorial sea is measured in respect of areas in the Atlantic Ocean. Information with respect to the limits of the continental shelf beyond 200 nautical miles in the Arctic Ocean will be submitted at a later date in accordance with article 4 of Annex II of the Convention read in conjunction with the decision of the eighteenth Meeting of States Parties to the Law of the Sea (SPLOS/ 183). Noting in particular article 77 of the Convention, Canada reserves the right to submit information in respect of other areas or portions of continental shelf.

This submission has been prepared as a joint effort of the Department of Foreign Affairs, Trade and Development, the Department of Natural Resources (Geological Survey of Canada) and the Department of Fisheries and Oceans (Canadian Hydrographic Service). The Geological Survey of Canada and the Canadian Hydrographic Service were responsible for collecting and interpreting data as well as preparing the submission from a technical and scientific standpoint. The Department of Foreign Affairs, Trade and Development was responsible for legal aspects of the submission and associated diplomatic work.

## 2. Notes

The depiction or use of the 200 M limit of another state should not be taken to signify acceptance or endorsement of its validity at international law.

All maps, charts and databases forming part of this submission were prepared by the government departments responsible for preparing such material and for certifying its quality and reliability.

## 3. Commission members who provided advice during the preparation of the submission

Mr. Harald Brekke, a member of the Commission from 1997-2012, and Dr. Richard Haworth, who was elected to the Commission in 2012, provided advice during the preparation of this submission.

## 4. Provisions of article 76 invoked in support of the submission

Canada has delineated its continental shelf in accordance with article 76 of the Convention. In particular, Canada invokes article 76(4), (5) and (6) in determining the location of the outer limits in this submission. Canada has defined fixed points in accordance with the 1% sediment thickness formula in article 76(4)(a)(i) or on arcs 60 M from the foot of the continental slope as provided for in article 76(4)(a)(ii), as well as on the distance constraint (350 M) and the depth constraint (2500 m plus 100 M) provided for in article 76(5). In accordance with article 76(7), the outer limits of the continental shelf have been delineated by fixed points connected by straight lines not exceeding 60 M in length.

## 5. General description of the continental margin in the Atlantic Ocean

The partial submission is organized in three sections: the Labrador Sea, the Grand Banks and Nova Scotia. Each section treats a particular region in a comprehensive manner and can be reviewed separately if necessary.

In geological and geomorphological terms, the continental margin of Canada in the Atlantic Ocean extends continuously from offshore Nova Scotia in the south, along the Grand Banks to the northern tip of Labrador, although each of the three regions described below has unique characteristics. This continental margin comprises a number of seafloor

elevations and forms the submerged prolongation of the land mass of Canada.

The formation of the continental margin in the Atlantic Ocean was initiated by the break-up of the supercontinent Pangea and the subsequent seafloor spreading episode, which formed the North Atlantic Ocean and the Labrador Sea.

The rifting and continental break-up started in the Nova Scotia region in the Upper Triassic, leading to the separation from its conjugate margin of Morocco. The basement underlying the shelf is associated with the Appalachian Orogeny. Since the onset of seafloor spreading, large amounts of sediments have been deposited on the shelf and slope. However, the tectonic framework and early sedimentary environments are still evident. At least five Pleistocene glacial epochs are known to have resulted in glaciers crossing the shelf and delivering vast amounts of sediment to the slope. As a result, mass failure complexes at all scales are notable on the surface and in the subsurface and numerous canyons and channels dissect the slope resulting in sediment deposited on the lower slope and fed directly to the deep ocean floor.

The continental margin in the Grand Banks region was primarily formed as a result of Upper Triassic to Lower Cretaceous rifting, followed by break-up, first from Iberia and then Europe. The complex rifting in this region followed different orientations and generated areas of stretched continental crust such as Orphan Basin and Flemish Pass, linking structural components like the seafloor elevations of Orphan Knoll, Flemish Cap and Newfoundland Ridge to the Grand Banks. The basement underlying the shelf is associated with the Appalachian Orogeny. Overprinting these structural features are the effects of numerous Quaternary glaciations, sea level transgression and regression and sculpting of the margin by bottom currents. Glaciers covered the Grand Banks during the Pleistocene and a number of shelf-crossing glacial troughs are evidence of ice streams delivering sediment directly to the slope. Strong bottom current activity generated large slope-plastered drift deposits on almost every segment of the continental margin in the Grand Banks region. The Northwest Atlantic Mid-Ocean Channel (NAMOC) circumscribes the Grand Banks. Turbidity current overspill deposits extend laterally from NAMOC to onlap the slope of the Grand Banks.

Wave breaking over the bow of the CCGS *Hudson* during data collection in the Labrador Sea, photo: David Mosher



In the Lower Cretaceous, rifting started in the Labrador Sea segment of the continental margin. The subsequent seafloor spreading episode formed the Labrador Sea and separated Labrador from Greenland, which were both part of the North Atlantic Precambrian craton of Laurentia extending from Labrador through Greenland to northwest Europe. The shelf off Labrador is characterised by extended, seaward-flexed continental crust, featuring an irregular and complex erosional surface that developed on Precambrian cratonic basement.

The broad geomorphologic elements of the continental margin off Labrador are dictated by its underlying tectonic framework, but the modern surface is largely a result of Pleistocene glacial epochs. A number of shelf-crossing troughs are evidence of ice streams. These glacial epochs delivered vast volumes of sediment to the Labrador margin, particularly seaward of these ice-stream troughs. Much of this sediment flux was constrained through many channels and gullies on the slope. These slope channels trend perpendicular to the slope and turn southeastwards when they reach the basin floor to follow the overall dip of the basin. They ultimately coalesce with the NAMOC, which starts from Davis Strait in the north and trends towards the southeast in the central Labrador Sea basin.

Crow's nest of  
CCGS *Hudson*, photo:  
David Mosher



## 6. Description of the outer limits of the continental shelf in the Atlantic Ocean

The outer limits of the continental shelf in the Atlantic Ocean are defined by 732 fixed points. Points are given a preface reflecting the region in which they are located but the numbering is continuous. For example, fixed point LS-ECS-047 in the Labrador Sea region is followed by GB-ECS-048 in the Grand Banks region. In all cases fixed points are joined by straight lines not exceeding 60 M in length, in accordance with article 76(7). All straight lines are geodesic lines.

### Labrador Sea region

The outer limits of the continental shelf in the Labrador Sea region are defined by 47 fixed points (LS-ECS-001 through LS-ECS-047). These fixed points are either formula points established in accordance with article 76(4)(a) (i) or (ii), points on the distance or depth constraint lines established in accordance with article 76(5), or a point on



the intersection of the line delineating the outer edge of the continental margin and the 200 M limit of the Kingdom of Denmark.

In addition, since the outer edge of the continental margin extends into the 200 M zone of the Kingdom of Denmark, Canada has used a segment of that 200 M limit to define the outer limits of its continental shelf in this region. The establishment of the final outer limits of the continental shelf of Canada in this region will depend on delimitation with the Kingdom of Denmark.

### **Grand Banks region**

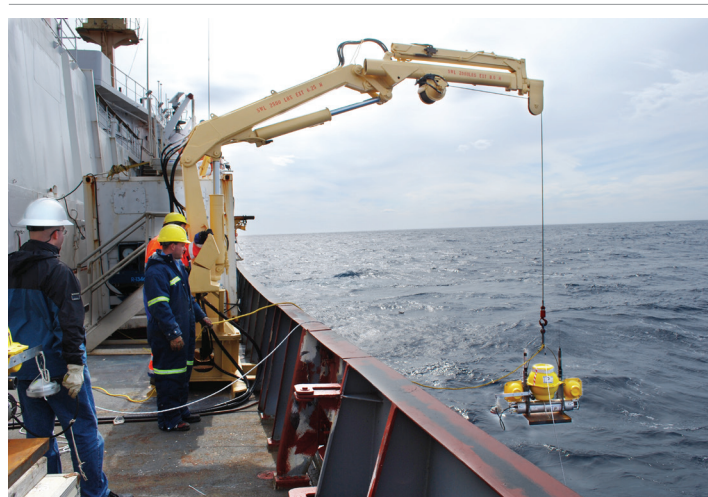
The outer limits of the continental shelf in the Grand Banks region are defined by 450 fixed points (GB-ECS-048 through GB-ECS-497). These fixed points are either formula points established in accordance with article 76(4)(a)(ii) or points on the distance or depth constraint lines established in accordance with article 76(5).

### **Nova Scotia region**

The outer limits of the continental shelf in the Nova Scotia region are defined by 235 fixed points (NS-ECS-498 to NS-ECS-732). The fixed points are either formula points established in accordance with article 76(4)(a)(i) or (ii), or points on the distance or depth constraint lines established in accordance with article 76(5). The southernmost fixed point in this region is placed at the intersection of the line delineating the outer edge of the continental margin and a provisional equidistance line with the United States of America computed by Canada that is used without prejudice to future delimitation. The establishment of the final outer limits of the continental shelf of Canada in this region will depend on delimitation with the United States of America.

## **7. Maritime Delimitation in the Atlantic Ocean**

This partial submission is made, consistent with article 76(10) and article 9 of Annex II of the Convention, without prejudice to future delimitation.



Ocean bottom seismometer launch in the Labrador Sea, photo: David Mosher

### **Labrador Sea region**

During the preparation of this submission, regular consultations between Canada and the Kingdom of Denmark revealed overlaps in their respective continental shelves in the Labrador Sea. Consequently, by an exchange of notes concluded on 15 March 2012, Canada and the Kingdom of Denmark reached an understanding that:

When one State transmits its submission regarding the outer limits of the continental shelf in the Labrador Sea to the Commission, the other State will promptly transmit a diplomatic note to the Secretary-General of the United Nations advising that it does not object to the consideration of the submission by the Commission and indicating that the recommendations made by the Commission in respect of the submission are without prejudice both to the consideration by the Commission of its own submission and to matters relating to the delimitation of boundaries between the two States. Each State will refer to this Arrangement in its submission and request the Commission to make recommendations on this basis.

Canada draws this exchange of notes to the attention of the Commission in respect of this submission and also advises, that in accordance with this exchange of notes, Canada filed a diplomatic note with the Secretary-General of the United Nations on 15 June 2012 with respect to the submission of the Kingdom of Denmark regarding the limits of the continental shelf beyond 200 M from the baselines from which the breadth of the territorial sea is measured in the areas south of Greenland.

### **Grand Banks region**

No maritime delimitation issues arise in this region.

### **Nova Scotia region**

During the preparation of this submission, regular consultations between Canada and the United States of America revealed overlaps in their respective continental shelves in the Nova Scotia region. Canada has been advised by the United States of America that it does not object to the consideration of Canada's submission without prejudice both to the delineation of its own shelf and to matters relating to delimitation between Canada and the United States of America.

The Commission will also be aware that on 8 May 2009, the French Republic submitted to the Secretary-General of the United Nations preliminary information in relation to St. Pierre and Miquelon. On 9 November 2009, Canada addressed a diplomatic note to the Secretary-General of the United Nations in which it rejected any claims by the French Republic to any maritime area, including any areas of continental shelf, beyond the area awarded to the French Republic by the Court of Arbitration in the Case concerning the Delimitation of Maritime Areas between Canada and the French Republic (10 June 1992). At that time, Canada also indicated it reserves the right to make additional comments in relation to the preliminary information or any other information, document or submission that the French Republic may subsequently file with the Secretary-General in relation to St. Pierre and Miquelon.

## Figures ▶

---

**Figure 1.** Perspective view of the continental margin in the North Atlantic Ocean

12

**Figure 2.** Overview of the outer limits of the continental shelf in the Atlantic Ocean

13

**Figure 3.** Outer limits of the continental shelf in the Labrador Sea region showing the provisions of article 76 invoked

14

**Figure 4.** Outer limits of the continental shelf in the Grand Banks region showing the provisions of article 76 invoked

15








**Figure 5.** Outer limits of the continental shelf in the Nova Scotia region showing the provisions of article 76 invoked

16







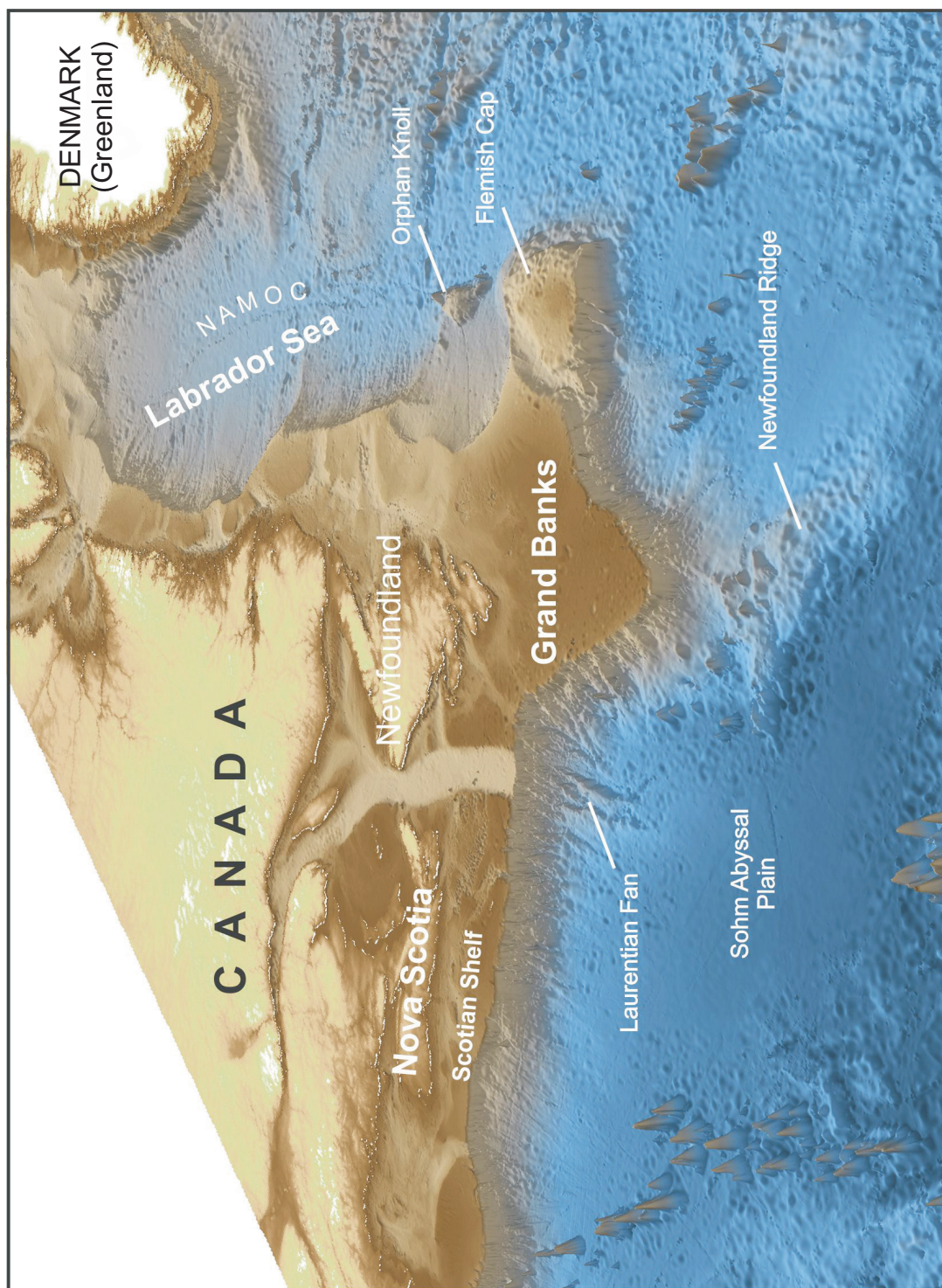
## Legend for figures

### Fixed points on the outer limits of the continental shelf of Canada

-  Sediment thickness formula point
-  60 M formula point
-  Point on the distance constraint (350 M)
-  Point on the depth constraint (2500 m + 100 M)
-  Point on the 200 M limit of Denmark (Greenland)
-  Point on the computed provisional equidistance line between Canada and the United States
-  Point on the intersection of the 200 M limits of Canada and Denmark (Greenland)

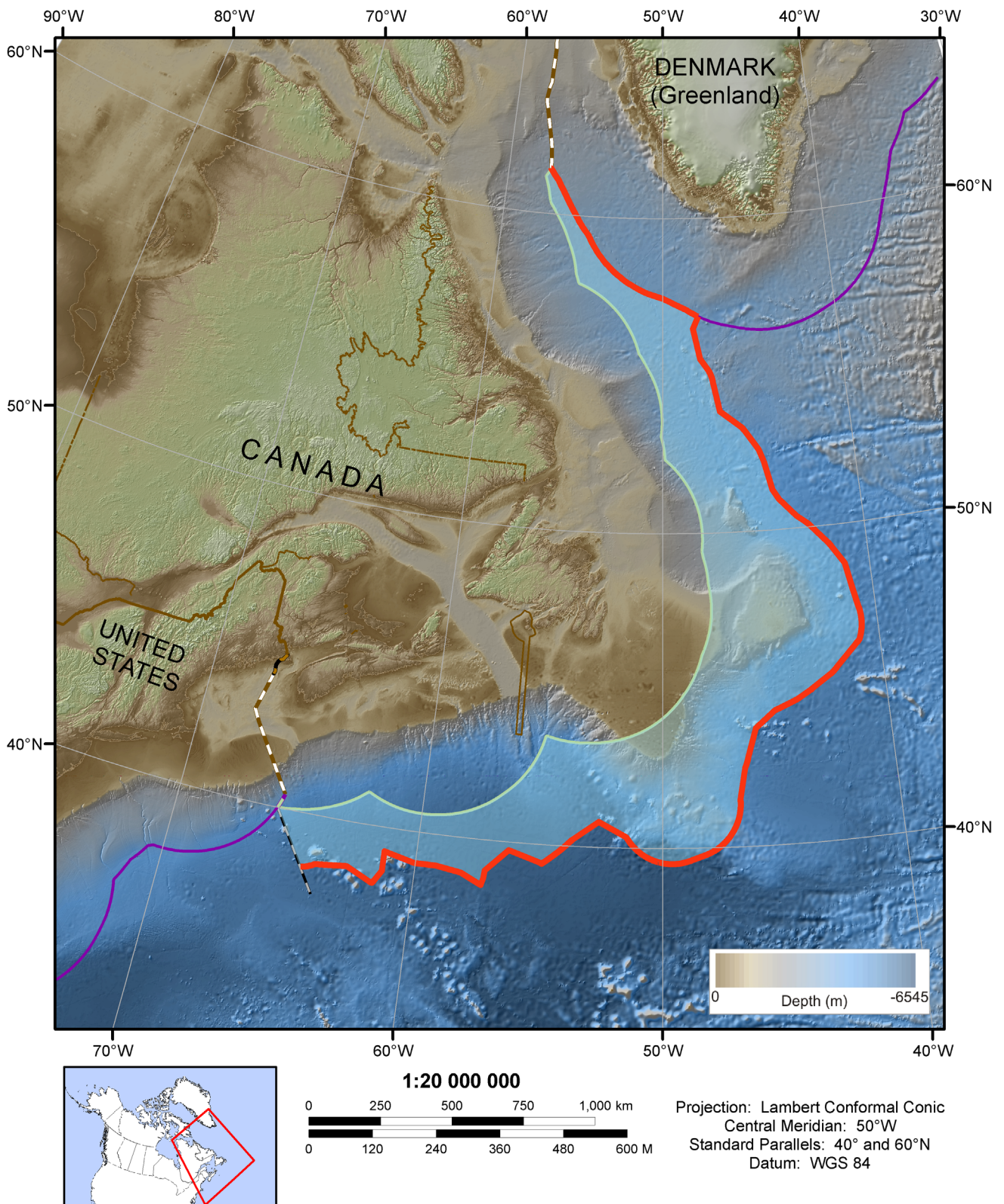
### Lines, limits and boundaries

-  Straight line not exceeding 60 M
-  Outer limits of the continental shelf of Canada
-  Area of Canada's continental shelf beyond 200 M
-  200 M limit of Canada
-  200 M limit of an opposite or adjacent state
-  200 M limit of the United States/Limit of Canada's maritime zones with the United States
-  Maritime boundary with an opposite or adjacent state
-  Limit of Canada's maritime zones with an opposite or adjacent state
-  Land boundary with the United States
-  Maritime boundary with France (St. Pierre and Miquelon)
-  Computed provisional equidistance line between Canada and the United States



**Figure 1.** Perspective view of the continental margin in the North Atlantic Ocean looking from the south towards the north. NAMOC is the Northwest Atlantic Mid-Ocean Channel. The rendered image is derived from the GEBCO\_08 gridded bathymetric data set. GEBCO is the General Bathymetric Chart of the Oceans. Vertical exaggeration is 20x. To provide a scale perspective, the shelf edge from offshore western Nova Scotia to the northern tip of Labrador is 7700 kilometres in length.





**Figure 2.** Overview of the outer limits of the continental shelf in the Atlantic Ocean



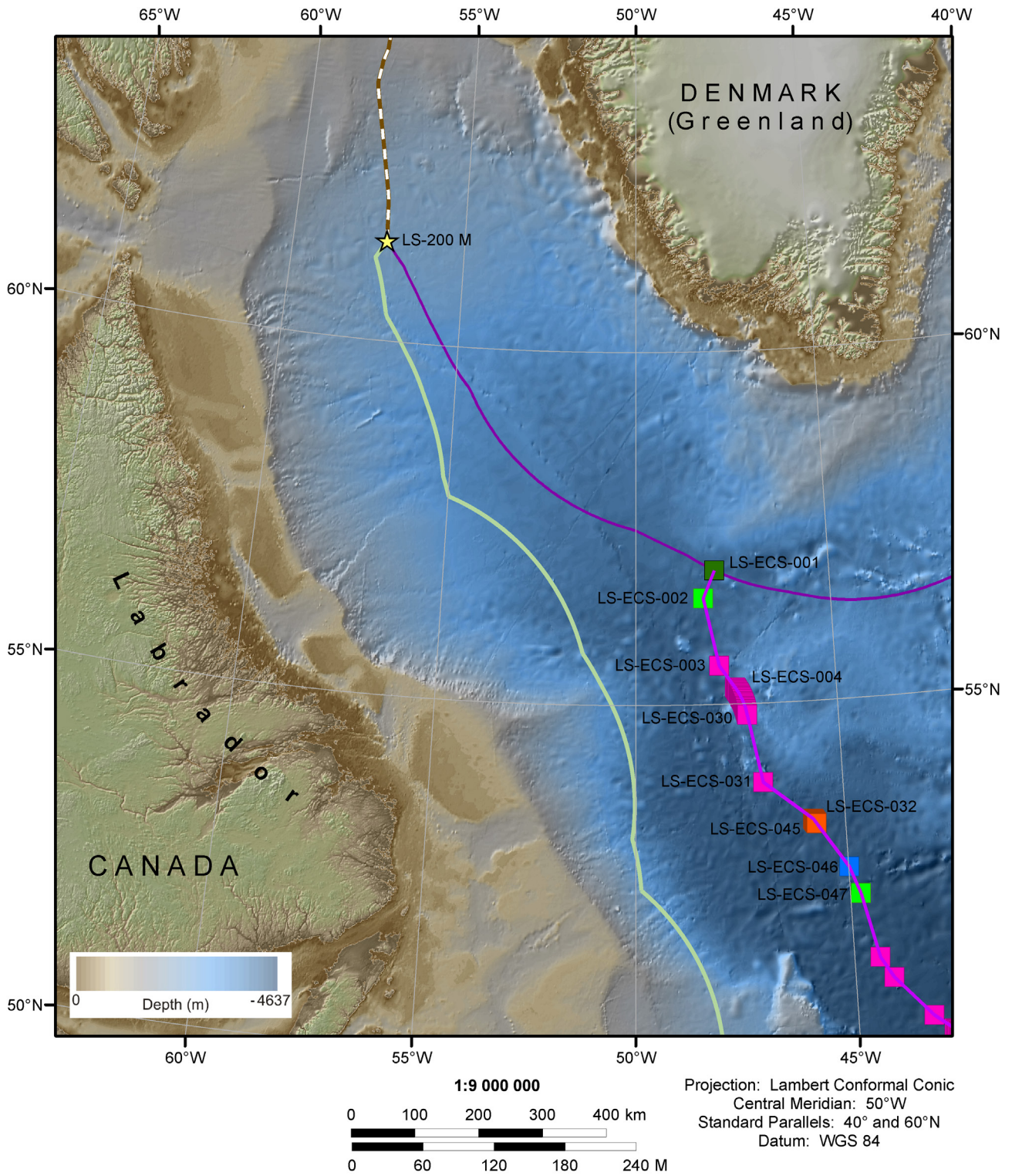


Figure 3. Outer limits of the continental shelf in the Labrador Sea region showing the provisions of article 76 invoked



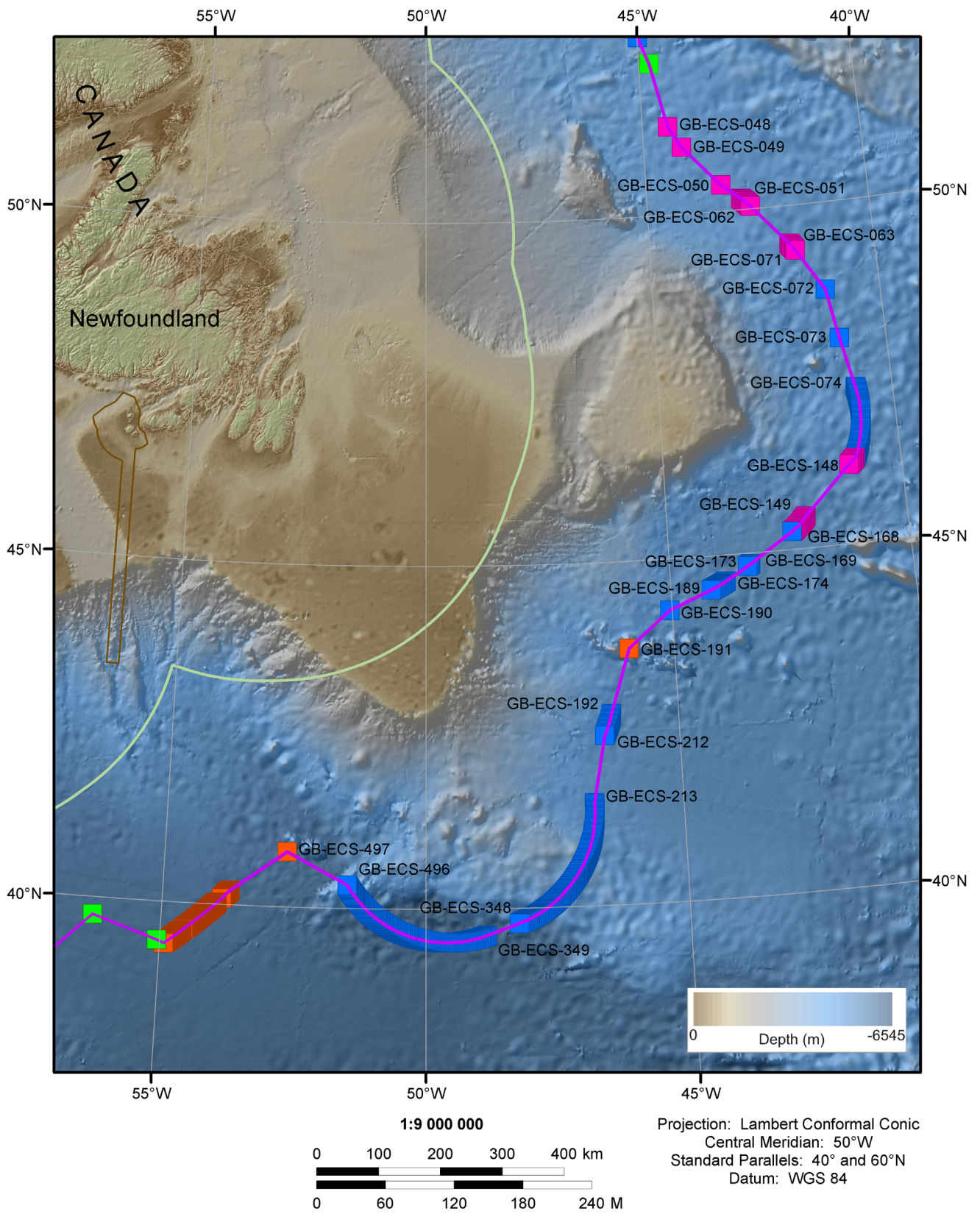


Figure 4. Outer limits of the continental shelf in the Grand Banks region showing the provisions of article 76 invoked



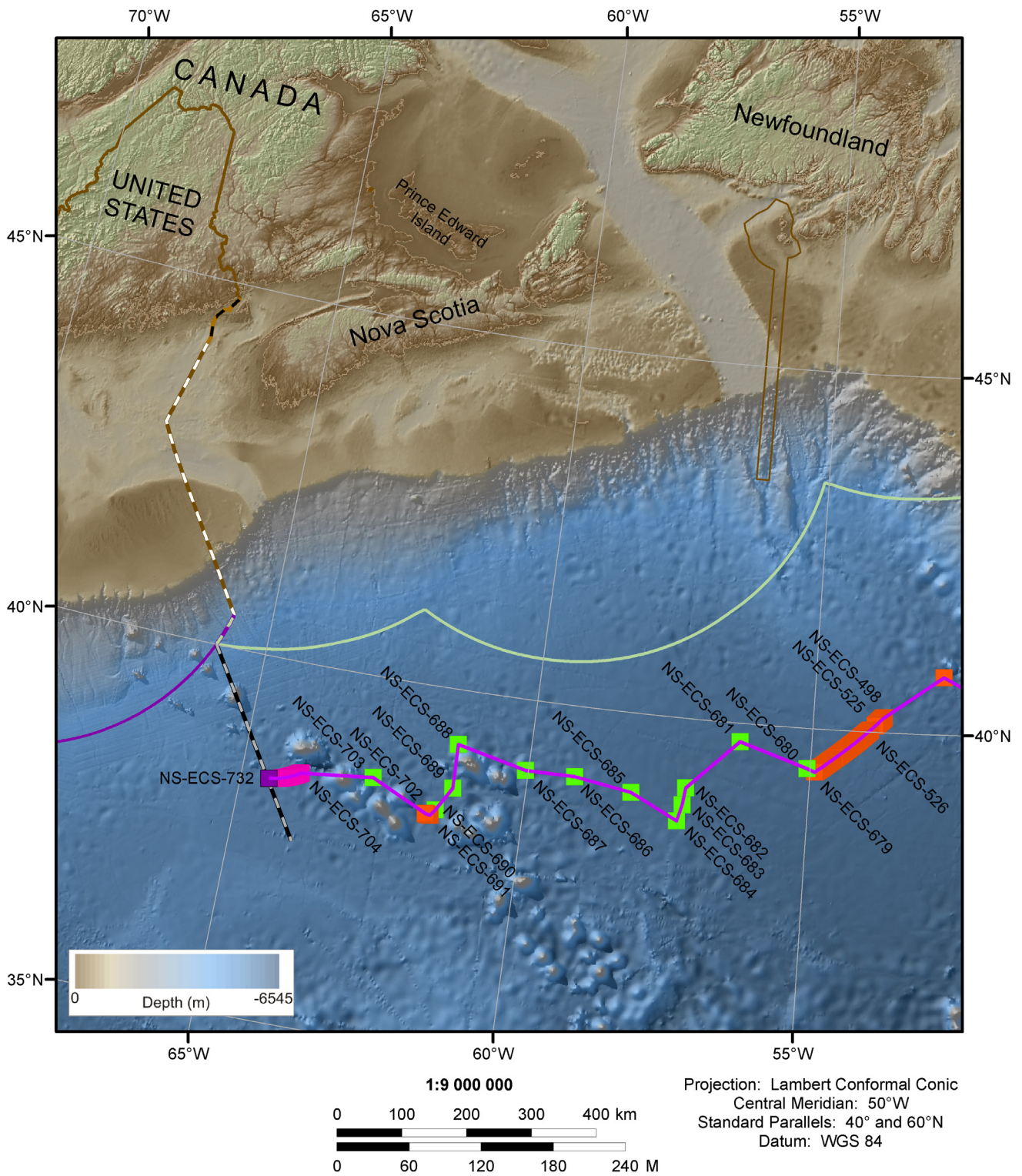


Figure 5. Outer limits of the continental shelf in the Nova Scotia region showing the provisions of article 76 invoked

# Appendices ▶

---

**Appendix 1.** Segments comprising the outer limits of the continental shelf in the Atlantic Ocean  
18

**Appendix 2.** Fixed points comprising the outer limits of the continental shelf in the Atlantic Ocean  
18

## APPENDIX 1

Segments comprising the outer limits of the continental shelf in the Atlantic Ocean

Latitude (decimal degrees in WGS 84)	Longitude (decimal degrees in WGS 84)	Description	Related outer limit fixed point or other point
<b>segment corresponding to a portion of the 200 M limit of the Kingdom of Denmark</b>			
61.4112222	-57.2700278	intersection of the 200 M limits of Canada and the Kingdom of Denmark	LS-200 M; start point of segment*
56.9075860	-47.9622531	intersection of the formula line with the 200 M limit of the Kingdom of Denmark	end point of segment; LS-ECS-001

\* Corresponds to coordinates agreed ad referendum in the context of negotiations between Canada and the Kingdom of Denmark relating to the maritime boundary inside 200 M.

## APPENDIX 2

Fixed points comprising the outer limits of the continental shelf in the Atlantic Ocean

Outer limit fixed point	Latitude (decimal degrees in WGS 84)	Longitude (decimal degrees in WGS 84)	Distance to next point (M)	Article 76 provision invoked
<b>Labrador Sea Region</b>				
LS-ECS-001	56.9075860	-47.9622531	25.86	art. 76(4)(a)(i): 1% sediment thickness; intersection with 200 M limit of the Kingdom of Denmark
LS-ECS-002	56.5121991	-48.2699339	59.30	art. 76(4)(a)(i): 1% sediment thickness
LS-ECS-003	55.5477883	-47.9000182	22.83	art. 76(4)(a)(ii): FOS + 60 M
LS-ECS-004	55.2341929	-47.5235589	1.00	art. 76(4)(a)(ii): FOS + 60 M
LS-ECS-005	55.2203699	-47.5073653	1.00	art. 76(4)(a)(ii): FOS + 60 M
LS-ECS-006	55.2063924	-47.4915879	1.00	art. 76(4)(a)(ii): FOS + 60 M
LS-ECS-007	55.1922644	-47.4762310	1.00	art. 76(4)(a)(ii): FOS + 60 M



Outer limit fixed point	Latitude (decimal degrees in WGS 84)	Longitude (decimal degrees in WGS 84)	Distance to next point (M)	Article 76 provision invoked
LS-ECS-008	55.1779901	-47.4612985	1.00	art. 76(4)(a)(ii): FOS + 60 M
LS-ECS-009	55.1635737	-47.4467945	1.00	art. 76(4)(a)(ii): FOS + 60 M
LS-ECS-010	55.1490194	-47.4327226	1.00	art. 76(4)(a)(ii): FOS + 60 M
LS-ECS-011	55.1343311	-47.4190861	1.00	art. 76(4)(a)(ii): FOS + 60 M
LS-ECS-012	55.1195131	-47.4058887	1.00	art. 76(4)(a)(ii): FOS + 60 M
LS-ECS-013	55.1045699	-47.3931338	1.00	art. 76(4)(a)(ii): FOS + 60 M
LS-ECS-014	55.0895056	-47.3808244	1.00	art. 76(4)(a)(ii): FOS + 60 M
LS-ECS-015	55.0743245	-47.3689634	1.00	art. 76(4)(a)(ii): FOS + 60 M
LS-ECS-016	55.0590310	-47.3575539	1.00	art. 76(4)(a)(ii): FOS + 60 M
LS-ECS-017	55.0436295	-47.3465986	1.00	art. 76(4)(a)(ii): FOS + 60 M
LS-ECS-018	55.0281244	-47.3361001	1.00	art. 76(4)(a)(ii): FOS + 60 M
LS-ECS-019	55.0125200	-47.3260607	1.00	art. 76(4)(a)(ii): FOS + 60 M
LS-ECS-020	54.9968209	-47.3164829	1.00	art. 76(4)(a)(ii): FOS + 60 M
LS-ECS-021	54.9810315	-47.3073689	1.00	art. 76(4)(a)(ii): FOS + 60 M
LS-ECS-022	54.9651562	-47.2987206	1.00	art. 76(4)(a)(ii): FOS + 60 M
LS-ECS-023	54.9491998	-47.2905401	1.00	art. 76(4)(a)(ii): FOS + 60 M
LS-ECS-024	54.9331665	-47.2828289	1.00	art. 76(4)(a)(ii): FOS + 60 M
LS-ECS-025	54.9170608	-47.2755888	1.00	art. 76(4)(a)(ii): FOS + 60 M
LS-ECS-026	54.9008876	-47.2688213	1.00	art. 76(4)(a)(ii): FOS + 60 M
LS-ECS-027	54.8846513	-47.2625276	1.00	art. 76(4)(a)(ii): FOS + 60 M
LS-ECS-028	54.8683564	-47.2567090	1.00	art. 76(4)(a)(ii): FOS + 60 M
LS-ECS-029	54.8520076	-47.2513666	1.00	art. 76(4)(a)(ii): FOS + 60 M
LS-ECS-030	54.8356094	-47.2465013	59.39	art. 76(4)(a)(ii): FOS + 60 M
LS-ECS-031	53.8660297	-46.9197419	53.04	art. 76(4)(a)(ii): FOS + 60 M
LS-ECS-032	53.3116384	-45.7655570	0.28	art. 76(4)(a)(ii): FOS + 60 M; art. 76(5): 350 M

Outer limit fixed point	Latitude (decimal degrees in WGS 84)	Longitude (decimal degrees in WGS 84)	Distance to next point (M)	Article 76 provision invoked
LS-ECS-033	53.3078384	-45.7611811	0.38	art. 76(5): 350 M
LS-ECS-034	53.3026133	-45.7551792	0.38	art. 76(5): 350 M
LS-ECS-035	53.2973839	-45.7491883	0.38	art. 76(5): 350 M
LS-ECS-036	53.2921504	-45.7432084	0.38	art. 76(5): 350 M
LS-ECS-037	53.2869127	-45.7372393	0.38	art. 76(5): 350 M
LS-ECS-038	53.2816708	-45.7312813	0.38	art. 76(5): 350 M
LS-ECS-039	53.2764247	-45.7253341	0.38	art. 76(5): 350 M
LS-ECS-040	53.2711744	-45.7193980	0.38	art. 76(5): 350 M
LS-ECS-041	53.2659200	-45.7134727	0.38	art. 76(5): 350 M
LS-ECS-042	53.2606615	-45.7075585	0.38	art. 76(5): 350 M
LS-ECS-043	53.2553988	-45.7016552	0.38	art. 76(5): 350 M
LS-ECS-044	53.2501320	-45.6957629	0.38	art. 76(5): 350 M
LS-ECS-045	53.2448610	-45.6898816	46.56	art. 76(5): 350 M
LS-ECS-046	52.5986321	-44.9823384	24.87	art. 76(4)(a)(ii): FOS + 60 M; art. 76(5): 2500m + 100 M
LS-ECS-047	52.2093377	-44.7524012	57.37	art. 76(4)(a)(i): 1% sediment thickness
<b>Grand Banks region</b>				
GB-ECS-048	51.2779744	-44.4129025	21.21	art. 76(4)(a)(ii): FOS + 60 M
GB-ECS-049	50.9723898	-44.1317954	47.42	art. 76(4)(a)(ii): FOS + 60 M
GB-ECS-050	50.3838968	-43.3033616	20.81	art. 76(4)(a)(ii): FOS + 60 M
GB-ECS-051	50.1674009	-42.8812644	1.00	art. 76(4)(a)(ii): FOS + 60 M
GB-ECS-052	50.1569216	-42.8611230	1.00	art. 76(4)(a)(ii): FOS + 60 M
GB-ECS-053	50.1462246	-42.8412652	1.00	art. 76(4)(a)(ii): FOS + 60 M
GB-ECS-054	50.1353132	-42.8216964	1.00	art. 76(4)(a)(ii): FOS + 60 M
GB-ECS-055	50.1241903	-42.8024221	1.00	art. 76(4)(a)(ii): FOS + 60 M
GB-ECS-056	50.1128594	-42.7834477	1.00	art. 76(4)(a)(ii): FOS + 60 M

Outer limit fixed point	Latitude (decimal degrees in WGS 84)	Longitude (decimal degrees in WGS 84)	Distance to next point (M)	Article 76 provision invoked
GB-ECS-057	50.1013236	-42.7647786	1.00	art. 76(4)(a)(ii): FOS + 60 M
GB-ECS-058	50.0895865	-42.7464201	1.00	art. 76(4)(a)(ii): FOS + 60 M
GB-ECS-059	50.0776514	-42.7283772	1.00	art. 76(4)(a)(ii): FOS + 60 M
GB-ECS-060	50.0655217	-42.7106548	1.00	art. 76(4)(a)(ii): FOS + 60 M
GB-ECS-061	50.0532010	-42.6932580	1.00	art. 76(4)(a)(ii): FOS + 60 M
GB-ECS-062	50.0406928	-42.6761913	46.85	art. 76(4)(a)(ii): FOS + 60 M
GB-ECS-063	49.4485142	-41.8926549	1.00	art. 76(4)(a)(ii): FOS + 60 M
GB-ECS-064	49.4356442	-41.8764499	1.00	art. 76(4)(a)(ii): FOS + 60 M
GB-ECS-065	49.4225976	-41.8605844	1.00	art. 76(4)(a)(ii): FOS + 60 M
GB-ECS-066	49.4093783	-41.8450629	1.00	art. 76(4)(a)(ii): FOS + 60 M
GB-ECS-067	49.3959900	-41.8298894	1.00	art. 76(4)(a)(ii): FOS + 60 M
GB-ECS-068	49.3824366	-41.8150682	1.00	art. 76(4)(a)(ii): FOS + 60 M
GB-ECS-069	49.3687221	-41.8006032	1.00	art. 76(4)(a)(ii): FOS + 60 M
GB-ECS-070	49.3548503	-41.7864982	1.00	art. 76(4)(a)(ii): FOS + 60 M
GB-ECS-071	49.3408253	-41.7727568	43.08	art. 76(4)(a)(ii): FOS + 60 M
GB-ECS-072	48.7308925	-41.1981316	44.31	art. 76(4)(a)(ii): FOS + 60 M; art. 76(5): 2500 m + 100 M
GB-ECS-073	48.0034747	-41.0110599	44.75	art. 76(5): 2500 m + 100 M
GB-ECS-074	47.2736584	-40.7863147	1.00	art. 76(5): 2500 m + 100 M
GB-ECS-075	47.2573333	-40.7814441	1.00	art. 76(5): 2500 m + 100 M
GB-ECS-076	47.2409757	-40.7768164	1.00	art. 76(5): 2500 m + 100 M
GB-ECS-077	47.2245872	-40.7724318	1.00	art. 76(5): 2500 m + 100 M
GB-ECS-078	47.2081694	-40.7682905	1.00	art. 76(5): 2500 m + 100 M
GB-ECS-079	47.1917241	-40.7643928	1.00	art. 76(5): 2500 m + 100 M
GB-ECS-080	47.1752528	-40.7607397	1.00	art. 76(5): 2500 m + 100 M
GB-ECS-081	47.1587574	-40.7573287	1.00	art. 76(5): 2500 m + 100 M

Outer limit fixed point	Latitude (decimal degrees in WGS 84)	Longitude (decimal degrees in WGS 84)	Distance to next point (M)	Article 76 provision invoked
GB-ECS-082	47.1422394	-40.7541626	1.00	art. 76(5): 2500 m + 100 M
GB-ECS-083	47.1257004	-40.7512405	1.00	art. 76(5): 2500 m + 100 M
GB-ECS-084	47.1091423	-40.7485616	1.00	art. 76(5): 2500 m + 100 M
GB-ECS-085	47.0925667	-40.7461270	1.00	art. 76(5): 2500 m + 100 M
GB-ECS-086	47.0759752	-40.7439365	1.00	art. 76(5): 2500 m + 100 M
GB-ECS-087	47.0593695	-40.7419902	1.00	art. 76(5): 2500 m + 100 M
GB-ECS-088	47.0427512	-40.7402881	1.00	art. 76(5): 2500 m + 100 M
GB-ECS-089	47.0261221	-40.7388301	1.00	art. 76(5): 2500 m + 100 M
GB-ECS-090	47.0094838	-40.7376161	1.00	art. 76(5): 2500 m + 100 M
GB-ECS-091	46.9928379	-40.7366460	0.06	art. 76(5): 2500 m + 100 M
GB-ECS-092	46.9918601	-40.7365967	0.94	art. 76(5): 2500 m + 100 M
GB-ECS-093	46.9761864	-40.7359079	1.00	art. 76(5): 2500 m + 100 M
GB-ECS-094	46.9595307	-40.7354126	1.00	art. 76(5): 2500 m + 100 M
GB-ECS-095	46.9428723	-40.7351608	1.00	art. 76(5): 2500 m + 100 M
GB-ECS-096	46.9262131	-40.7351522	1.00	art. 76(5): 2500 m + 100 M
GB-ECS-097	46.9095545	-40.7353867	1.00	art. 76(5): 2500 m + 100 M
GB-ECS-098	46.8928984	-40.7358640	1.00	art. 76(5): 2500 m + 100 M
GB-ECS-099	46.8762463	-40.7365837	1.00	art. 76(5): 2500 m + 100 M
GB-ECS-100	46.8595999	-40.7375457	1.00	art. 76(5): 2500 m + 100 M
GB-ECS-101	46.8429608	-40.7387495	1.00	art. 76(5): 2500 m + 100 M
GB-ECS-102	46.8263308	-40.7401950	1.00	art. 76(5): 2500 m + 100 M
GB-ECS-103	46.8097115	-40.7418814	1.00	art. 76(5): 2500 m + 100 M
GB-ECS-104	46.7931045	-40.7438089	1.00	art. 76(5): 2500 m + 100 M
GB-ECS-105	46.7765115	-40.7459767	1.00	art. 76(5): 2500 m + 100 M
GB-ECS-106	46.7599341	-40.7483844	1.00	art. 76(5): 2500 m + 100 M
GB-ECS-107	46.7433739	-40.7510316	1.00	art. 76(5): 2500 m + 100 M

Outer limit fixed point	Latitude (decimal degrees in WGS 84)	Longitude (decimal degrees in WGS 84)	Distance to next point (M)	Article 76 provision invoked
GB-ECS-108	46.7268327	-40.7539178	1.00	art. 76(5): 2500 m + 100 M
GB-ECS-109	46.7103119	-40.7570425	0.95	art. 76(5): 2500 m + 100 M
GB-ECS-110	46.6946108	-40.7602366	0.05	art. 76(5): 2500 m + 100 M
GB-ECS-111	46.6938132	-40.7604027	1.00	art. 76(5): 2500 m + 100 M
GB-ECS-112	46.6773330	-40.7639504	1.00	art. 76(5): 2500 m + 100 M
GB-ECS-113	46.6608780	-40.7677360	1.00	art. 76(5): 2500 m + 100 M
GB-ECS-114	46.6444497	-40.7717572	1.00	art. 76(5): 2500 m + 100 M
GB-ECS-115	46.6280495	-40.7760139	1.00	art. 76(5): 2500 m + 100 M
GB-ECS-116	46.6116794	-40.7805058	1.00	art. 76(5): 2500 m + 100 M
GB-ECS-117	46.5953407	-40.7852322	1.00	art. 76(5): 2500 m + 100 M
GB-ECS-118	46.5790353	-40.7901935	1.00	art. 76(5): 2500 m + 100 M
GB-ECS-119	46.5627643	-40.7953857	1.00	art. 76(5): 2500 m + 100 M
GB-ECS-120	46.5465298	-40.8008114	1.00	art. 76(5): 2500 m + 100 M
GB-ECS-121	46.5303333	-40.8064688	1.00	art. 76(5): 2500 m + 100 M
GB-ECS-122	46.5141762	-40.8123571	1.00	art. 76(5): 2500 m + 100 M
GB-ECS-123	46.4980602	-40.8184755	1.00	art. 76(5): 2500 m + 100 M
GB-ECS-124	46.4819868	-40.8248232	1.00	art. 76(5): 2500 m + 100 M
GB-ECS-125	46.4659576	-40.8313994	1.00	art. 76(5): 2500 m + 100 M
GB-ECS-126	46.4499742	-40.8382033	1.00	art. 76(5): 2500 m + 100 M
GB-ECS-127	46.4340382	-40.8452339	1.00	art. 76(5): 2500 m + 100 M
GB-ECS-128	46.4181511	-40.8524905	1.00	art. 76(5): 2500 m + 100 M
GB-ECS-129	46.4023143	-40.8599721	1.00	art. 76(5): 2500 m + 100 M
GB-ECS-130	46.3865296	-40.8676778	1.00	art. 76(5): 2500 m + 100 M
GB-ECS-131	46.3707983	-40.8756067	1.00	art. 76(5): 2500 m + 100 M
GB-ECS-132	46.3551221	-40.8837578	1.00	art. 76(5): 2500 m + 100 M
GB-ECS-133	46.3395024	-40.8921300	1.00	art. 76(5): 2500 m + 100 M

Outer limit fixed point	Latitude (decimal degrees in WGS 84)	Longitude (decimal degrees in WGS 84)	Distance to next point (M)	Article 76 provision invoked
GB-ECS-134	46.3239408	-40.9007225	1.00	art. 76(5): 2500 m + 100 M
GB-ECS-135	46.3084388	-40.9095342	1.00	art. 76(5): 2500 m + 100 M
GB-ECS-136	46.2929978	-40.9185641	1.00	art. 76(5): 2500 m + 100 M
GB-ECS-137	46.2776193	-40.9278111	1.00	art. 76(5): 2500 m + 100 M
GB-ECS-138	46.2623050	-40.9372741	0.62	art. 76(5): 2500 m + 100 M
GB-ECS-139	46.2528112	-40.9433002	0.95	art. 76(4)(a)(ii): FOS + 60 M; art. 76(5): 2500 m + 100 M
GB-ECS-140	46.2414841	-40.9591722	1.00	art. 76(4)(a)(ii): FOS + 60 M
GB-ECS-141	46.2297301	-40.9761899	1.00	art. 76(4)(a)(ii): FOS + 60 M
GB-ECS-142	46.2181718	-40.9934802	1.00	art. 76(4)(a)(ii): FOS + 60 M
GB-ECS-143	46.2068126	-41.0110384	1.00	art. 76(4)(a)(ii): FOS + 60 M
GB-ECS-144	46.1956552	-41.0288595	1.00	art. 76(4)(a)(ii): FOS + 60 M
GB-ECS-145	46.1847028	-41.0469387	1.00	art. 76(4)(a)(ii): FOS + 60 M
GB-ECS-146	46.1739582	-41.0652711	1.00	art. 76(4)(a)(ii): FOS + 60 M
GB-ECS-147	46.1634244	-41.0838515	1.00	art. 76(4)(a)(ii): FOS + 60 M
GB-ECS-148	46.1531040	-41.1026749	59.03	art. 76(4)(a)(ii): FOS + 60 M
GB-ECS-149	45.4647758	-42.1073961	1.00	art. 76(4)(a)(ii): FOS + 60 M
GB-ECS-150	45.4518981	-42.1224239	1.00	art. 76(4)(a)(ii): FOS + 60 M
GB-ECS-151	45.4391965	-42.1377476	1.00	art. 76(4)(a)(ii): FOS + 60 M
GB-ECS-152	45.4266742	-42.1533630	1.00	art. 76(4)(a)(ii): FOS + 60 M
GB-ECS-153	45.4143347	-42.1692655	1.00	art. 76(4)(a)(ii): FOS + 60 M
GB-ECS-154	45.4021812	-42.1854511	1.00	art. 76(4)(a)(ii): FOS + 60 M
GB-ECS-155	45.3902169	-42.2019150	1.00	art. 76(4)(a)(ii): FOS + 60 M
GB-ECS-156	45.3784451	-42.2186528	1.00	art. 76(4)(a)(ii): FOS + 60 M
GB-ECS-157	45.3668689	-42.2356597	1.00	art. 76(4)(a)(ii): FOS + 60 M
GB-ECS-158	45.3554916	-42.2529309	1.00	art. 76(4)(a)(ii): FOS + 60 M



Outer limit fixed point	Latitude (decimal degrees in WGS 84)	Longitude (decimal degrees in WGS 84)	Distance to next point (M)	Article 76 provision invoked
GB-ECS-159	45.3443160	-42.2704618	1.00	art. 76(4)(a)(ii): FOS + 60 M
GB-ECS-160	45.3333452	-42.2882474	1.00	art. 76(4)(a)(ii): FOS + 60 M
GB-ECS-161	45.3225822	-42.3062829	1.00	art. 76(4)(a)(ii): FOS + 60 M
GB-ECS-162	45.3120297	-42.3245634	1.00	art. 76(4)(a)(ii): FOS + 60 M
GB-ECS-163	45.3016907	-42.3430839	1.00	art. 76(4)(a)(ii): FOS + 60 M
GB-ECS-164	45.2915677	-42.3618393	1.00	art. 76(4)(a)(ii): FOS + 60 M
GB-ECS-165	45.2816636	-42.3808245	1.00	art. 76(4)(a)(ii): FOS + 60 M
GB-ECS-166	45.2719810	-42.4000344	1.00	art. 76(4)(a)(ii): FOS + 60 M
GB-ECS-167	45.2625223	-42.4194637	0.18	art. 76(4)(a)(ii): FOS + 60 M
GB-ECS-168	45.2608889	-42.4229402	45.94	art. 76(4)(a)(ii): FOS + 60 M; art. 76(5): 2500 m + 100 M
GB-ECS-169	44.8430305	-43.3278347	0.52	art. 76(4)(a)(ii): FOS + 60 M; art. 76(5): 2500 m + 100 M
GB-ECS-170	44.8383617	-43.3382251	1.00	art. 76(5): 2500 m + 100 M
GB-ECS-171	44.8296015	-43.3581494	1.00	art. 76(5): 2500 m + 100 M
GB-ECS-172	44.8209799	-43.3781897	1.00	art. 76(5): 2500 m + 100 M
GB-ECS-173	44.8124977	-43.3983443	22.96	art. 76(5): 2500 m + 100 M
GB-ECS-174	44.6190852	-43.8614107	1.00	art. 76(5): 2500 m + 100 M
GB-ECS-175	44.6107070	-43.8815810	1.00	art. 76(5): 2500 m + 100 M
GB-ECS-176	44.6024695	-43.9018617	1.00	art. 76(5): 2500 m + 100 M
GB-ECS-177	44.5943737	-43.9222510	1.00	art. 76(5): 2500 m + 100 M
GB-ECS-178	44.5864202	-43.9427469	1.00	art. 76(5): 2500 m + 100 M
GB-ECS-179	44.5786099	-43.9633476	1.00	art. 76(5): 2500 m + 100 M
GB-ECS-180	44.5709433	-43.9840510	1.00	art. 76(5): 2500 m + 100 M
GB-ECS-181	44.5634213	-44.0048553	1.00	art. 76(5): 2500 m + 100 M
GB-ECS-182	44.5560445	-44.0257583	1.00	art. 76(5): 2500 m + 100 M
GB-ECS-183	44.5488137	-44.0467582	1.00	art. 76(5): 2500 m + 100 M

Outer limit fixed point	Latitude (decimal degrees in WGS 84)	Longitude (decimal degrees in WGS 84)	Distance to next point (M)	Article 76 provision invoked
GB-ECS-184	44.5417294	-44.0678531	1.00	art. 76(5): 2500 m + 100 M
GB-ECS-185	44.5347923	-44.0890409	1.00	art. 76(5): 2500 m + 100 M
GB-ECS-186	44.5280032	-44.1103197	1.00	art. 76(5): 2500 m + 100 M
GB-ECS-187	44.5213625	-44.1316873	1.00	art. 76(5): 2500 m + 100 M
GB-ECS-188	44.5148710	-44.1531419	1.00	art. 76(5): 2500 m + 100 M
GB-ECS-189	44.5085291	-44.1746815	40.48	art. 76(5): 2500 m + 100 M
GB-ECS-190	44.2497594	-45.0434556	49.05	art. 76(5): 2500 m + 100 M
GB-ECS-191	43.7271292	-45.9141511	59.20	art. 76(5): 350 M
GB-ECS-192	42.7864105	-46.3221435	1.00	art. 76(5): 2500 m + 100 M
GB-ECS-193	42.7703070	-46.3280006	1.00	art. 76(5): 2500 m + 100 M
GB-ECS-194	42.7542336	-46.3340061	1.00	art. 76(5): 2500 m + 100 M
GB-ECS-195	42.7381707	-46.3400621	1.00	art. 76(5): 2500 m + 100 M
GB-ECS-196	42.7221528	-46.3463323	1.00	art. 76(5): 2500 m + 100 M
GB-ECS-197	42.7061815	-46.3528162	1.00	art. 76(5): 2500 m + 100 M
GB-ECS-198	42.6902584	-46.3595129	1.00	art. 76(5): 2500 m + 100 M
GB-ECS-199	42.6743850	-46.3664216	1.00	art. 76(5): 2500 m + 100 M
GB-ECS-200	42.6585629	-46.3735414	1.00	art. 76(5): 2500 m + 100 M
GB-ECS-201	42.6427936	-46.3808715	1.00	art. 76(5): 2500 m + 100 M
GB-ECS-202	42.6270786	-46.3884110	1.00	art. 76(5): 2500 m + 100 M
GB-ECS-203	42.6114195	-46.3961591	1.00	art. 76(5): 2500 m + 100 M
GB-ECS-204	42.5958178	-46.4041147	1.00	art. 76(5): 2500 m + 100 M
GB-ECS-205	42.5802750	-46.4122771	1.00	art. 76(5): 2500 m + 100 M
GB-ECS-206	42.5647927	-46.4206453	1.00	art. 76(5): 2500 m + 100 M
GB-ECS-207	42.5493723	-46.4292182	1.00	art. 76(5): 2500 m + 100 M
GB-ECS-208	42.5340153	-46.4379949	1.00	art. 76(5): 2500 m + 100 M
GB-ECS-209	42.5187233	-46.4469745	1.00	art. 76(5): 2500 m + 100 M

Outer limit fixed point	Latitude (decimal degrees in WGS 84)	Longitude (decimal degrees in WGS 84)	Distance to next point (M)	Article 76 provision invoked
GB-ECS-210	42.5034976	-46.4561558	1.00	art. 76(5): 2500 m + 100 M
GB-ECS-211	42.4883397	-46.4655380	1.00	art. 76(5): 2500 m + 100 M
GB-ECS-212	42.4732513	-46.4751198	59.60	art. 76(5): 2500 m + 100 M
GB-ECS-213	41.4977910	-46.7290062	1.00	art. 76(5): 2500 m + 100 M
GB-ECS-214	41.4811308	-46.7280663	1.00	art. 76(5): 2500 m + 100 M
GB-ECS-215	41.4644643	-46.7273483	1.00	art. 76(5): 2500 m + 100 M
GB-ECS-216	41.4477932	-46.7268521	1.00	art. 76(5): 2500 m + 100 M
GB-ECS-217	41.4311191	-46.7265777	1.00	art. 76(5): 2500 m + 100 M
GB-ECS-218	41.4144438	-46.7265249	1.00	art. 76(5): 2500 m + 100 M
GB-ECS-219	41.3977688	-46.7266935	1.00	art. 76(5): 2500 m + 100 M
GB-ECS-220	41.3810960	-46.7270833	1.00	art. 76(5): 2500 m + 100 M
GB-ECS-221	41.3644268	-46.7276942	1.00	art. 76(5): 2500 m + 100 M
GB-ECS-222	41.3477630	-46.7285259	1.00	art. 76(5): 2500 m + 100 M
GB-ECS-223	41.3311062	-46.7295781	1.00	art. 76(5): 2500 m + 100 M
GB-ECS-224	41.3144582	-46.7308506	1.00	art. 76(5): 2500 m + 100 M
GB-ECS-225	41.2978205	-46.7323430	1.00	art. 76(5): 2500 m + 100 M
GB-ECS-226	41.2811948	-46.7340552	1.00	art. 76(5): 2500 m + 100 M
GB-ECS-227	41.2645796	-46.7359376	1.00	art. 76(5): 2500 m + 100 M
GB-ECS-228	41.2479745	-46.7379722	1.00	art. 76(5): 2500 m + 100 M
GB-ECS-229	41.2313800	-46.7401516	1.00	art. 76(5): 2500 m + 100 M
GB-ECS-230	41.2147996	-46.7425126	1.00	art. 76(5): 2500 m + 100 M
GB-ECS-231	41.1982378	-46.7450917	1.00	art. 76(5): 2500 m + 100 M
GB-ECS-232	41.1816960	-46.7478885	1.00	art. 76(5): 2500 m + 100 M
GB-ECS-233	41.1651762	-46.7509026	1.00	art. 76(5): 2500 m + 100 M
GB-ECS-234	41.1486798	-46.7541335	1.00	art. 76(5): 2500 m + 100 M
GB-ECS-235	41.1322085	-46.7575808	1.00	art. 76(5): 2500 m + 100 M

Outer limit fixed point	Latitude (decimal degrees in WGS 84)	Longitude (decimal degrees in WGS 84)	Distance to next point (M)	Article 76 provision invoked
GB-ECS-236	41.1157639	-46.7612440	1.00	art. 76(5): 2500 m + 100 M
GB-ECS-237	41.0993476	-46.7651224	1.00	art. 76(5): 2500 m + 100 M
GB-ECS-238	41.0829615	-46.7692167	1.00	art. 76(5): 2500 m + 100 M
GB-ECS-239	41.0666066	-46.7735231	1.00	art. 76(5): 2500 m + 100 M
GB-ECS-240	41.0502851	-46.7780441	1.00	art. 76(5): 2500 m + 100 M
GB-ECS-241	41.0339983	-46.7827782	1.00	art. 76(5): 2500 m + 100 M
GB-ECS-242	41.0177479	-46.7877248	1.00	art. 76(5): 2500 m + 100 M
GB-ECS-243	41.0015356	-46.7928830	1.00	art. 76(5): 2500 m + 100 M
GB-ECS-244	40.9853628	-46.7982524	1.00	art. 76(5): 2500 m + 100 M
GB-ECS-245	40.9692312	-46.8038322	1.00	art. 76(5): 2500 m + 100 M
GB-ECS-246	40.9531423	-46.8096217	1.00	art. 76(5): 2500 m + 100 M
GB-ECS-247	40.9370978	-46.8156203	1.00	art. 76(5): 2500 m + 100 M
GB-ECS-248	40.9210991	-46.8218271	1.00	art. 76(5): 2500 m + 100 M
GB-ECS-249	40.9051479	-46.8282414	1.00	art. 76(5): 2500 m + 100 M
GB-ECS-250	40.8892458	-46.8348624	1.00	art. 76(5): 2500 m + 100 M
GB-ECS-251	40.8733942	-46.8416894	1.00	art. 76(5): 2500 m + 100 M
GB-ECS-252	40.8575948	-46.8487215	1.00	art. 76(5): 2500 m + 100 M
GB-ECS-253	40.8418490	-46.8559579	1.00	art. 76(5): 2500 m + 100 M
GB-ECS-254	40.8261584	-46.8633978	1.00	art. 76(5): 2500 m + 100 M
GB-ECS-255	40.8105246	-46.8710403	1.00	art. 76(5): 2500 m + 100 M
GB-ECS-256	40.7949490	-46.8788844	1.00	art. 76(5): 2500 m + 100 M
GB-ECS-257	40.7794331	-46.8869294	1.00	art. 76(5): 2500 m + 100 M
GB-ECS-258	40.7639786	-46.8951742	1.00	art. 76(5): 2500 m + 100 M
GB-ECS-259	40.7485868	-46.9036179	1.00	art. 76(5): 2500 m + 100 M
GB-ECS-260	40.7332593	-46.9122597	1.00	art. 76(5): 2500 m + 100 M
GB-ECS-261	40.7179977	-46.9210984	1.00	art. 76(5): 2500 m + 100 M

Outer limit fixed point	Latitude (decimal degrees in WGS 84)	Longitude (decimal degrees in WGS 84)	Distance to next point (M)	Article 76 provision invoked
GB-ECS-262	40.7028031	-46.9301332	1.00	art. 76(5): 2500 m + 100 M
GB-ECS-263	40.6876774	-46.9393629	1.00	art. 76(5): 2500 m + 100 M
GB-ECS-264	40.6726218	-46.9487867	1.00	art. 76(5): 2500 m + 100 M
GB-ECS-265	40.6576379	-46.9584034	1.00	art. 76(5): 2500 m + 100 M
GB-ECS-266	40.6427270	-46.9682120	1.00	art. 76(5): 2500 m + 100 M
GB-ECS-267	40.6278908	-46.9782113	1.00	art. 76(5): 2500 m + 100 M
GB-ECS-268	40.6131304	-46.9884004	1.00	art. 76(5): 2500 m + 100 M
GB-ECS-269	40.5984474	-46.9987782	1.00	art. 76(5): 2500 m + 100 M
GB-ECS-270	40.5838433	-47.0093434	1.00	art. 76(5): 2500 m + 100 M
GB-ECS-271	40.5693194	-47.0200950	1.00	art. 76(5): 2500 m + 100 M
GB-ECS-272	40.5548771	-47.0310318	1.00	art. 76(5): 2500 m + 100 M
GB-ECS-273	40.5404754	-47.0420578	1.00	art. 76(5): 2500 m + 100 M
GB-ECS-274	40.5261272	-47.0532006	1.00	art. 76(5): 2500 m + 100 M
GB-ECS-275	40.5118628	-47.0645246	1.00	art. 76(5): 2500 m + 100 M
GB-ECS-276	40.4976846	-47.0760309	1.00	art. 76(5): 2500 m + 100 M
GB-ECS-277	40.4835938	-47.0877173	1.00	art. 76(5): 2500 m + 100 M
GB-ECS-278	40.4695917	-47.0995828	1.00	art. 76(5): 2500 m + 100 M
GB-ECS-279	40.4556795	-47.1116261	1.00	art. 76(5): 2500 m + 100 M
GB-ECS-280	40.4418587	-47.1238458	1.00	art. 76(5): 2500 m + 100 M
GB-ECS-281	40.4281305	-47.1362407	1.00	art. 76(5): 2500 m + 100 M
GB-ECS-282	40.4144964	-47.1488095	1.00	art. 76(5): 2500 m + 100 M
GB-ECS-283	40.4009575	-47.1615510	1.00	art. 76(5): 2500 m + 100 M
GB-ECS-284	40.3875152	-47.1744638	1.00	art. 76(5): 2500 m + 100 M
GB-ECS-285	40.3741707	-47.1875466	1.00	art. 76(5): 2500 m + 100 M
GB-ECS-286	40.3609254	-47.2007979	1.00	art. 76(5): 2500 m + 100 M
GB-ECS-287	40.3477806	-47.2142164	1.00	art. 76(5): 2500 m + 100 M



Outer limit fixed point	Latitude (decimal degrees in WGS 84)	Longitude (decimal degrees in WGS 84)	Distance to next point (M)	Article 76 provision invoked
GB-ECS-288	40.3347374	-47.2278008	1.00	art. 76(5): 2500 m + 100 M
GB-ECS-289	40.3216961	-47.2413858	1.00	art. 76(5): 2500 m + 100 M
GB-ECS-290	40.3087385	-47.2551044	1.00	art. 76(5): 2500 m + 100 M
GB-ECS-291	40.2958848	-47.2689862	1.00	art. 76(5): 2500 m + 100 M
GB-ECS-292	40.2831363	-47.2830298	1.00	art. 76(5): 2500 m + 100 M
GB-ECS-293	40.2704942	-47.2972339	1.00	art. 76(5): 2500 m + 100 M
GB-ECS-294	40.2579598	-47.3115970	1.00	art. 76(5): 2500 m + 100 M
GB-ECS-295	40.2455340	-47.3261176	1.00	art. 76(5): 2500 m + 100 M
GB-ECS-296	40.2332183	-47.3407943	1.00	art. 76(5): 2500 m + 100 M
GB-ECS-297	40.2210137	-47.3556256	1.00	art. 76(5): 2500 m + 100 M
GB-ECS-298	40.2089214	-47.3706100	1.00	art. 76(5): 2500 m + 100 M
GB-ECS-299	40.1969426	-47.3857460	1.00	art. 76(5): 2500 m + 100 M
GB-ECS-300	40.1850783	-47.4010322	1.00	art. 76(5): 2500 m + 100 M
GB-ECS-301	40.1733297	-47.4164669	0.58	art. 76(5): 2500 m + 100 M
GB-ECS-302	40.1665754	-47.4254780	0.42	art. 76(5): 2500 m + 100 M
GB-ECS-303	40.1616905	-47.4320390	1.00	art. 76(5): 2500 m + 100 M
GB-ECS-304	40.1501585	-47.4477436	1.00	art. 76(5): 2500 m + 100 M
GB-ECS-305	40.1387454	-47.4635923	1.00	art. 76(5): 2500 m + 100 M
GB-ECS-306	40.1274523	-47.4795836	1.00	art. 76(5): 2500 m + 100 M
GB-ECS-307	40.1162802	-47.4957160	1.00	art. 76(5): 2500 m + 100 M
GB-ECS-308	40.1052301	-47.5119877	1.00	art. 76(5): 2500 m + 100 M
GB-ECS-309	40.0943031	-47.5283973	1.00	art. 76(5): 2500 m + 100 M
GB-ECS-310	40.0835003	-47.5449431	1.00	art. 76(5): 2500 m + 100 M
GB-ECS-311	40.0728227	-47.5616234	1.00	art. 76(5): 2500 m + 100 M
GB-ECS-312	40.0622712	-47.5784367	1.00	art. 76(5): 2500 m + 100 M
GB-ECS-313	40.0518470	-47.5953813	1.00	art. 76(5): 2500 m + 100 M

Outer limit fixed point	Latitude (decimal degrees in WGS 84)	Longitude (decimal degrees in WGS 84)	Distance to next point (M)	Article 76 provision invoked
GB-ECS-314	40.0415509	-47.6124554	1.00	art. 76(5): 2500 m + 100 M
GB-ECS-315	40.0313839	-47.6296575	1.00	art. 76(5): 2500 m + 100 M
GB-ECS-316	40.0213470	-47.6469859	1.00	art. 76(5): 2500 m + 100 M
GB-ECS-317	40.0114412	-47.6644388	1.00	art. 76(5): 2500 m + 100 M
GB-ECS-318	40.0016674	-47.6820147	1.00	art. 76(5): 2500 m + 100 M
GB-ECS-319	39.9920264	-47.6997118	1.00	art. 76(5): 2500 m + 100 M
GB-ECS-320	39.9825193	-47.7175284	1.00	art. 76(5): 2500 m + 100 M
GB-ECS-321	39.9731468	-47.7354628	1.00	art. 76(5): 2500 m + 100 M
GB-ECS-322	39.9639100	-47.7535131	1.00	art. 76(5): 2500 m + 100 M
GB-ECS-323	39.9548096	-47.7716777	1.00	art. 76(5): 2500 m + 100 M
GB-ECS-324	39.9458465	-47.7899549	1.00	art. 76(5): 2500 m + 100 M
GB-ECS-325	39.9370216	-47.8083428	1.00	art. 76(5): 2500 m + 100 M
GB-ECS-326	39.9283356	-47.8268398	1.00	art. 76(5): 2500 m + 100 M
GB-ECS-327	39.9197895	-47.8454440	1.00	art. 76(5): 2500 m + 100 M
GB-ECS-328	39.9113839	-47.8641536	1.00	art. 76(5): 2500 m + 100 M
GB-ECS-329	39.9031198	-47.8829669	1.00	art. 76(5): 2500 m + 100 M
GB-ECS-330	39.8949978	-47.9018821	1.00	art. 76(5): 2500 m + 100 M
GB-ECS-331	39.8870187	-47.9208973	1.00	art. 76(5): 2500 m + 100 M
GB-ECS-332	39.8791830	-47.9400105	1.00	art. 76(5): 2500 m + 100 M
GB-ECS-333	39.8714917	-47.9592201	1.00	art. 76(5): 2500 m + 100 M
GB-ECS-334	39.8639455	-47.9785243	1.00	art. 76(5): 2500 m + 100 M
GB-ECS-335	39.8565452	-47.9979212	1.00	art. 76(5): 2500 m + 100 M
GB-ECS-336	39.8492914	-48.0174091	0.50	art. 76(5): 2500 m + 100 M
GB-ECS-337	39.8457196	-48.0271866	0.50	art. 76(5): 2500 m + 100 M
GB-ECS-338	39.8421846	-48.0369859	1.00	art. 76(5): 2500 m + 100 M
GB-ECS-339	39.8352256	-48.0566499	1.00	art. 76(5): 2500 m + 100 M

Outer limit fixed point	Latitude (decimal degrees in WGS 84)	Longitude (decimal degrees in WGS 84)	Distance to next point (M)	Article 76 provision invoked
GB-ECS-340	39.8284152	-48.0763992	1.00	art. 76(5): 2500 m + 100 M
GB-ECS-341	39.8217540	-48.0962321	1.00	art. 76(5): 2500 m + 100 M
GB-ECS-342	39.8152426	-48.1161465	1.00	art. 76(5): 2500 m + 100 M
GB-ECS-343	39.8088815	-48.1361406	1.00	art. 76(5): 2500 m + 100 M
GB-ECS-344	39.8026715	-48.1562126	1.00	art. 76(5): 2500 m + 100 M
GB-ECS-345	39.7966130	-48.1763605	1.00	art. 76(5): 2500 m + 100 M
GB-ECS-346	39.7907067	-48.1965824	1.00	art. 76(5): 2500 m + 100 M
GB-ECS-347	39.7849531	-48.2168765	1.00	art. 76(5): 2500 m + 100 M
GB-ECS-348	39.7793527	-48.2372407	29.90	art. 76(5): 2500 m + 100 M
GB-ECS-349	39.6099834	-48.8443984	1.00	art. 76(5): 2500 m + 100 M
GB-ECS-350	39.6043959	-48.8647174	1.00	art. 76(5): 2500 m + 100 M
GB-ECS-351	39.5989622	-48.8851043	1.00	art. 76(5): 2500 m + 100 M
GB-ECS-352	39.5936829	-48.9055573	1.00	art. 76(5): 2500 m + 100 M
GB-ECS-353	39.5885583	-48.9260745	1.00	art. 76(5): 2500 m + 100 M
GB-ECS-354	39.5835891	-48.9466538	1.00	art. 76(5): 2500 m + 100 M
GB-ECS-355	39.5787757	-48.9672936	1.00	art. 76(5): 2500 m + 100 M
GB-ECS-356	39.5741184	-48.9879916	1.00	art. 76(5): 2500 m + 100 M
GB-ECS-357	39.5696179	-49.0087461	1.00	art. 76(5): 2500 m + 100 M
GB-ECS-358	39.5652744	-49.0295550	1.00	art. 76(5): 2500 m + 100 M
GB-ECS-359	39.5610884	-49.0504165	1.00	art. 76(5): 2500 m + 100 M
GB-ECS-360	39.5570602	-49.0713286	1.00	art. 76(5): 2500 m + 100 M
GB-ECS-361	39.5531903	-49.0922893	1.00	art. 76(5): 2500 m + 100 M
GB-ECS-362	39.5494791	-49.1132967	1.00	art. 76(5): 2500 m + 100 M
GB-ECS-363	39.5459267	-49.1343487	1.00	art. 76(5): 2500 m + 100 M
GB-ECS-364	39.5425337	-49.1554435	1.00	art. 76(5): 2500 m + 100 M
GB-ECS-365	39.5393002	-49.1765791	1.00	art. 76(5): 2500 m + 100 M

Outer limit fixed point	Latitude (decimal degrees in WGS 84)	Longitude (decimal degrees in WGS 84)	Distance to next point (M)	Article 76 provision invoked
GB-ECS-366	39.5362267	-49.1977535	1.00	art. 76(5): 2500 m + 100 M
GB-ECS-367	39.5333133	-49.2189647	1.00	art. 76(5): 2500 m + 100 M
GB-ECS-368	39.5305604	-49.2402108	1.00	art. 76(5): 2500 m + 100 M
GB-ECS-369	39.5279683	-49.2614897	1.00	art. 76(5): 2500 m + 100 M
GB-ECS-370	39.5255371	-49.2827996	1.00	art. 76(5): 2500 m + 100 M
GB-ECS-371	39.5232670	-49.3041383	1.00	art. 76(5): 2500 m + 100 M
GB-ECS-372	39.5211584	-49.3255040	1.00	art. 76(5): 2500 m + 100 M
GB-ECS-373	39.5192113	-49.3468946	1.00	art. 76(5): 2500 m + 100 M
GB-ECS-374	39.5174261	-49.3683081	1.00	art. 76(5): 2500 m + 100 M
GB-ECS-375	39.5158034	-49.3897427	1.00	art. 76(5): 2500 m + 100 M
GB-ECS-376	39.5143416	-49.4111960	1.00	art. 76(5): 2500 m + 100 M
GB-ECS-377	39.5130425	-49.4326665	1.00	art. 76(5): 2500 m + 100 M
GB-ECS-378	39.5119059	-49.4541518	1.00	art. 76(5): 2500 m + 100 M
GB-ECS-379	39.5109317	-49.4756502	1.00	art. 76(5): 2500 m + 100 M
GB-ECS-380	39.5101200	-49.4971596	1.00	art. 76(5): 2500 m + 100 M
GB-ECS-381	39.5094710	-49.5186779	1.00	art. 76(5): 2500 m + 100 M
GB-ECS-382	39.5089847	-49.5402031	1.00	art. 76(5): 2500 m + 100 M
GB-ECS-383	39.5086611	-49.5617334	1.00	art. 76(5): 2500 m + 100 M
GB-ECS-384	39.5085003	-49.5832666	1.00	art. 76(5): 2500 m + 100 M
GB-ECS-385	39.5085021	-49.6048008	1.00	art. 76(5): 2500 m + 100 M
GB-ECS-386	39.5086668	-49.6263340	1.00	art. 76(5): 2500 m + 100 M
GB-ECS-387	39.5089943	-49.6478642	1.00	art. 76(5): 2500 m + 100 M
GB-ECS-388	39.5094844	-49.6693893	1.00	art. 76(5): 2500 m + 100 M
GB-ECS-389	39.5101373	-49.6909074	1.00	art. 76(5): 2500 m + 100 M
GB-ECS-390	39.5109527	-49.7124165	1.00	art. 76(5): 2500 m + 100 M
GB-ECS-391	39.5119308	-49.7339146	1.00	art. 76(5): 2500 m + 100 M



Outer limit fixed point	Latitude (decimal degrees in WGS 84)	Longitude (decimal degrees in WGS 84)	Distance to next point (M)	Article 76 provision invoked
GB-ECS-392	39.5130712	-49.7553997	1.00	art. 76(5): 2500 m + 100 M
GB-ECS-393	39.5143740	-49.7768697	1.00	art. 76(5): 2500 m + 100 M
GB-ECS-394	39.5158391	-49.7983228	1.00	art. 76(5): 2500 m + 100 M
GB-ECS-395	39.5174662	-49.8197568	1.00	art. 76(5): 2500 m + 100 M
GB-ECS-396	39.5192553	-49.8411698	1.00	art. 76(5): 2500 m + 100 M
GB-ECS-397	39.5212061	-49.8625598	1.00	art. 76(5): 2500 m + 100 M
GB-ECS-398	39.5233186	-49.8839249	1.00	art. 76(5): 2500 m + 100 M
GB-ECS-399	39.5255924	-49.9052630	1.00	art. 76(5): 2500 m + 100 M
GB-ECS-400	39.5280274	-49.9265721	1.00	art. 76(5): 2500 m + 100 M
GB-ECS-401	39.5306234	-49.9478504	1.00	art. 76(5): 2500 m + 100 M
GB-ECS-402	39.5333800	-49.9690956	1.00	art. 76(5): 2500 m + 100 M
GB-ECS-403	39.5362972	-49.9903060	1.00	art. 76(5): 2500 m + 100 M
GB-ECS-404	39.5393745	-50.0114795	1.00	art. 76(5): 2500 m + 100 M
GB-ECS-405	39.5426117	-50.0326142	1.00	art. 76(5): 2500 m + 100 M
GB-ECS-406	39.5460085	-50.0537080	1.00	art. 76(5): 2500 m + 100 M
GB-ECS-407	39.5495645	-50.0747591	1.00	art. 76(5): 2500 m + 100 M
GB-ECS-408	39.5532796	-50.0957654	1.00	art. 76(5): 2500 m + 100 M
GB-ECS-409	39.5571532	-50.1167250	1.00	art. 76(5): 2500 m + 100 M
GB-ECS-410	39.5611850	-50.1376359	0.05	art. 76(5): 2500 m + 100 M
GB-ECS-411	39.5614014	-50.1387340	0.95	art. 76(5): 2500 m + 100 M
GB-ECS-412	39.5653286	-50.1585115	1.00	art. 76(5): 2500 m + 100 M
GB-ECS-413	39.5696272	-50.1793360	0.42	art. 76(5): 2500 m + 100 M
GB-ECS-414	39.5714783	-50.1880608	1.00	art. 76(5): 2500 m + 100 M
GB-ECS-415	39.5759999	-50.2088082	1.00	art. 76(5): 2500 m + 100 M
GB-ECS-416	39.5806781	-50.2294989	1.00	art. 76(5): 2500 m + 100 M
GB-ECS-417	39.5855125	-50.2501310	1.00	art. 76(5): 2500 m + 100 M

Outer limit fixed point	Latitude (decimal degrees in WGS 84)	Longitude (decimal degrees in WGS 84)	Distance to next point (M)	Article 76 provision invoked
GB-ECS-418	39.5905026	-50.2707025	1.00	art. 76(5): 2500 m + 100 M
GB-ECS-419	39.5956479	-50.2912116	1.00	art. 76(5): 2500 m + 100 M
GB-ECS-420	39.6009480	-50.3116563	0.74	art. 76(5): 2500 m + 100 M
GB-ECS-421	39.6049736	-50.3267579	0.26	art. 76(5): 2500 m + 100 M
GB-ECS-422	39.6064014	-50.3320350	1.00	art. 76(5): 2500 m + 100 M
GB-ECS-423	39.6120055	-50.3523470	1.00	art. 76(5): 2500 m + 100 M
GB-ECS-424	39.6177628	-50.3725887	1.00	art. 76(5): 2500 m + 100 M
GB-ECS-425	39.6236729	-50.3927585	1.00	art. 76(5): 2500 m + 100 M
GB-ECS-426	39.6297351	-50.4128544	1.00	art. 76(5): 2500 m + 100 M
GB-ECS-427	39.6359490	-50.4328744	1.00	art. 76(5): 2500 m + 100 M
GB-ECS-428	39.6423138	-50.4528168	1.00	art. 76(5): 2500 m + 100 M
GB-ECS-429	39.6488290	-50.4726796	1.00	art. 76(5): 2500 m + 100 M
GB-ECS-430	39.6554941	-50.4924609	1.00	art. 76(5): 2500 m + 100 M
GB-ECS-431	39.6623083	-50.5121589	1.00	art. 76(5): 2500 m + 100 M
GB-ECS-432	39.6692711	-50.5317716	1.00	art. 76(5): 2500 m + 100 M
GB-ECS-433	39.6763817	-50.5512973	1.00	art. 76(5): 2500 m + 100 M
GB-ECS-434	39.6836396	-50.5707342	1.00	art. 76(5): 2500 m + 100 M
GB-ECS-435	39.6910440	-50.5900802	1.00	art. 76(5): 2500 m + 100 M
GB-ECS-436	39.6985943	-50.6093336	1.00	art. 76(5): 2500 m + 100 M
GB-ECS-437	39.7062897	-50.6284926	1.00	art. 76(5): 2500 m + 100 M
GB-ECS-438	39.7141295	-50.6475554	1.00	art. 76(5): 2500 m + 100 M
GB-ECS-439	39.7221130	-50.6665202	1.00	art. 76(5): 2500 m + 100 M
GB-ECS-440	39.7302395	-50.6853850	1.00	art. 76(5): 2500 m + 100 M
GB-ECS-441	39.7385081	-50.7041481	1.00	art. 76(5): 2500 m + 100 M
GB-ECS-442	39.7469181	-50.7228078	1.00	art. 76(5): 2500 m + 100 M
GB-ECS-443	39.7554687	-50.7413622	1.00	art. 76(5): 2500 m + 100 M

Outer limit fixed point	Latitude (decimal degrees in WGS 84)	Longitude (decimal degrees in WGS 84)	Distance to next point (M)	Article 76 provision invoked
GB-ECS-444	39.7641591	-50.7598096	1.00	art. 76(5): 2500 m + 100 M
GB-ECS-445	39.7729885	-50.7781481	1.00	art. 76(5): 2500 m + 100 M
GB-ECS-446	39.7819560	-50.7963760	1.00	art. 76(5): 2500 m + 100 M
GB-ECS-447	39.7910609	-50.8144917	1.00	art. 76(5): 2500 m + 100 M
GB-ECS-448	39.8003021	-50.8324933	1.00	art. 76(5): 2500 m + 100 M
GB-ECS-449	39.8096790	-50.8503790	1.00	art. 76(5): 2500 m + 100 M
GB-ECS-450	39.8191906	-50.8681471	1.00	art. 76(5): 2500 m + 100 M
GB-ECS-451	39.8288359	-50.8857961	1.00	art. 76(5): 2500 m + 100 M
GB-ECS-452	39.8386142	-50.9033240	1.00	art. 76(5): 2500 m + 100 M
GB-ECS-453	39.8485245	-50.9207293	1.00	art. 76(5): 2500 m + 100 M
GB-ECS-454	39.8585657	-50.9380102	1.00	art. 76(5): 2500 m + 100 M
GB-ECS-455	39.8687370	-50.9551650	1.00	art. 76(5): 2500 m + 100 M
GB-ECS-456	39.8790375	-50.9721922	1.00	art. 76(5): 2500 m + 100 M
GB-ECS-457	39.8894662	-50.9890900	1.00	art. 76(5): 2500 m + 100 M
GB-ECS-458	39.9000220	-51.0058568	1.00	art. 76(5): 2500 m + 100 M
GB-ECS-459	39.9107040	-51.0224908	1.00	art. 76(5): 2500 m + 100 M
GB-ECS-460	39.9215111	-51.0389906	1.00	art. 76(5): 2500 m + 100 M
GB-ECS-461	39.9324424	-51.0553543	1.00	art. 76(5): 2500 m + 100 M
GB-ECS-462	39.9434967	-51.0715806	1.00	art. 76(5): 2500 m + 100 M
GB-ECS-463	39.9546731	-51.0876676	1.00	art. 76(5): 2500 m + 100 M
GB-ECS-464	39.9659704	-51.1036139	1.00	art. 76(5): 2500 m + 100 M
GB-ECS-465	39.9773883	-51.1194172	1.00	art. 76(5): 2500 m + 100 M
GB-ECS-466	39.9889243	-51.1350775	1.00	art. 76(5): 2500 m + 100 M
GB-ECS-467	40.0005777	-51.1505927	1.00	art. 76(5): 2500 m + 100 M
GB-ECS-468	40.0123482	-51.1659604	1.00	art. 76(5): 2500 m + 100 M
GB-ECS-469	40.0242343	-51.1811797	1.00	art. 76(5): 2500 m + 100 M



Outer limit fixed point	Latitude (decimal degrees in WGS 84)	Longitude (decimal degrees in WGS 84)	Distance to next point (M)	Article 76 provision invoked
GB-ECS-470	40.0362347	-51.1962489	1.00	art. 76(5): 2500 m + 100 M
GB-ECS-471	40.0483484	-51.2111666	1.00	art. 76(5): 2500 m + 100 M
GB-ECS-472	40.0605742	-51.2259312	1.00	art. 76(5): 2500 m + 100 M
GB-ECS-473	40.0729110	-51.2405414	1.00	art. 76(5): 2500 m + 100 M
GB-ECS-474	40.0853575	-51.2549956	1.00	art. 76(5): 2500 m + 100 M
GB-ECS-475	40.0979127	-51.2692923	1.00	art. 76(5): 2500 m + 100 M
GB-ECS-476	40.1105752	-51.2834302	1.00	art. 76(5): 2500 m + 100 M
GB-ECS-477	40.1233439	-51.2974077	1.00	art. 76(5): 2500 m + 100 M
GB-ECS-478	40.1362175	-51.3112235	1.00	art. 76(5): 2500 m + 100 M
GB-ECS-479	40.1491948	-51.3248760	1.00	art. 76(5): 2500 m + 100 M
GB-ECS-480	40.1622747	-51.3383641	0.51	art. 76(5): 2500 m + 100 M
GB-ECS-481	40.1690212	-51.3452163	0.49	art. 76(5): 2500 m + 100 M
GB-ECS-482	40.1754551	-51.3516875	0.46	art. 76(5): 2500 m + 100 M
GB-ECS-483	40.1814912	-51.3577009	0.54	art. 76(5): 2500 m + 100 M
GB-ECS-484	40.1887334	-51.3648471	1.00	art. 76(5): 2500 m + 100 M
GB-ECS-485	40.2021093	-51.3778400	1.00	art. 76(5): 2500 m + 100 M
GB-ECS-486	40.2155827	-51.3906630	1.00	art. 76(5): 2500 m + 100 M
GB-ECS-487	40.2291523	-51.4033147	1.00	art. 76(5): 2500 m + 100 M
GB-ECS-488	40.2428168	-51.4157939	1.00	art. 76(5): 2500 m + 100 M
GB-ECS-489	40.2565749	-51.4280992	1.00	art. 76(5): 2500 m + 100 M
GB-ECS-490	40.2704252	-51.4402293	0.47	art. 76(5): 2500 m + 100 M
GB-ECS-491	40.2769791	-51.4458806	0.53	art. 76(5): 2500 m + 100 M
GB-ECS-492	40.2843593	-51.4521970	1.00	art. 76(5): 2500 m + 100 M
GB-ECS-493	40.2983770	-51.4639997	1.00	art. 76(5): 2500 m + 100 M
GB-ECS-494	40.3124831	-51.4756236	1.00	art. 76(5): 2500 m + 100 M
GB-ECS-495	40.3266763	-51.4870676	1.00	art. 76(5): 2500 m + 100 M

Outer limit fixed point	Latitude (decimal degrees in WGS 84)	Longitude (decimal degrees in WGS 84)	Distance to next point (M)	Article 76 provision invoked
GB-ECS-496	40.3409552	-51.4983304	59.92	art. 76(5): 2500 m + 100 M
GB-ECS-497	40.8020915	-52.6610237	59.98	art. 76(5): 350 M
<b>Nova Scotia region</b>				
NS-ECS-498	40.2116009	-53.7188805	0.38	art. 76(5): 350 M
NS-ECS-499	40.2069834	-53.7245791	0.38	art. 76(5): 350 M
NS-ECS-500	40.2023704	-53.7302835	0.38	art. 76(5): 350 M
NS-ECS-501	40.1977619	-53.7359936	0.38	art. 76(5): 350 M
NS-ECS-502	40.1931578	-53.7417095	0.38	art. 76(5): 350 M
NS-ECS-503	40.1885582	-53.7474311	0.38	art. 76(5): 350 M
NS-ECS-504	40.1839631	-53.7531585	0.38	art. 76(5): 350 M
NS-ECS-505	40.1793725	-53.7588916	0.38	art. 76(5): 350 M
NS-ECS-506	40.1747864	-53.7646304	0.38	art. 76(5): 350 M
NS-ECS-507	40.1702047	-53.7703749	0.38	art. 76(5): 350 M
NS-ECS-508	40.1656275	-53.7761251	0.38	art. 76(5): 350 M
NS-ECS-509	40.1610549	-53.7818810	0.38	art. 76(5): 350 M
NS-ECS-510	40.1564867	-53.7876426	0.38	art. 76(5): 350 M
NS-ECS-511	40.1519231	-53.7934099	0.38	art. 76(5): 350 M
NS-ECS-512	40.1473640	-53.7991829	0.38	art. 76(5): 350 M
NS-ECS-513	40.1428093	-53.8049615	0.38	art. 76(5): 350 M
NS-ECS-514	40.1382593	-53.8107458	0.38	art. 76(5): 350 M
NS-ECS-515	40.1337137	-53.8165358	0.38	art. 76(5): 350 M
NS-ECS-516	40.1291727	-53.8223314	0.38	art. 76(5): 350 M
NS-ECS-517	40.1246362	-53.8281326	0.38	art. 76(5): 350 M
NS-ECS-518	40.1201042	-53.8339395	0.38	art. 76(5): 350 M
NS-ECS-519	40.1155768	-53.8397521	0.38	art. 76(5): 350 M
NS-ECS-520	40.1110540	-53.8455702	0.38	art. 76(5): 350 M

Outer limit fixed point	Latitude (decimal degrees in WGS 84)	Longitude (decimal degrees in WGS 84)	Distance to next point (M)	Article 76 provision invoked
NS-ECS-521	40.1065357	-53.8513940	0.38	art. 76(5): 350 M
NS-ECS-522	40.1020219	-53.8572234	0.38	art. 76(5): 350 M
NS-ECS-523	40.0975127	-53.8630584	0.38	art. 76(5): 350 M
NS-ECS-524	40.0930081	-53.8688990	0.31	art. 76(5): 350 M
NS-ECS-525	40.0892962	-53.8737214	5.18	art. 76(4)(a)(ii): FOS + 60 M; art. 76(5): 350 M
NS-ECS-526	40.0285350	-53.9537760	0.22	art. 76(4)(a)(i): 1% sediment thickness; art. 76(5): 350 M
NS-ECS-527	40.0259900	-53.9571751	0.38	art. 76(5): 350 M
NS-ECS-528	40.0215591	-53.9631043	0.38	art. 76(5): 350 M
NS-ECS-529	40.0171328	-53.9690391	0.38	art. 76(5): 350 M
NS-ECS-530	40.0127111	-53.9749793	0.38	art. 76(5): 350 M
NS-ECS-531	40.0082941	-53.9809249	0.38	art. 76(5): 350 M
NS-ECS-532	40.0038818	-53.9868761	0.38	art. 76(5): 350 M
NS-ECS-533	39.9994741	-53.9928327	0.38	art. 76(5): 350 M
NS-ECS-534	39.9950711	-53.9987947	0.38	art. 76(5): 350 M
NS-ECS-535	39.9906727	-54.0047622	0.38	art. 76(5): 350 M
NS-ECS-536	39.9862791	-54.0107352	0.38	art. 76(5): 350 M
NS-ECS-537	39.9818901	-54.0167135	0.38	art. 76(5): 350 M
NS-ECS-538	39.9775057	-54.0226973	0.38	art. 76(5): 350 M
NS-ECS-539	39.9731261	-54.0286865	0.38	art. 76(5): 350 M
NS-ECS-540	39.9687512	-54.0346811	0.38	art. 76(5): 350 M
NS-ECS-541	39.9643809	-54.0406811	0.38	art. 76(5): 350 M
NS-ECS-542	39.9600154	-54.0466866	0.38	art. 76(5): 350 M
NS-ECS-543	39.9556545	-54.0526974	0.38	art. 76(5): 350 M
NS-ECS-544	39.9512984	-54.0587135	0.38	art. 76(5): 350 M
NS-ECS-545	39.9469470	-54.0647351	0.38	art. 76(5): 350 M

Outer limit fixed point	Latitude (decimal degrees in WGS 84)	Longitude (decimal degrees in WGS 84)	Distance to next point (M)	Article 76 provision invoked
NS-ECS-546	39.9426002	-54.0707620	0.38	art. 76(5): 350 M
NS-ECS-547	39.9382582	-54.0767943	0.38	art. 76(5): 350 M
NS-ECS-548	39.9339210	-54.0828320	0.38	art. 76(5): 350 M
NS-ECS-549	39.9295884	-54.0888749	0.38	art. 76(5): 350 M
NS-ECS-550	39.9252606	-54.0949233	0.38	art. 76(5): 350 M
NS-ECS-551	39.9209375	-54.1009770	0.38	art. 76(5): 350 M
NS-ECS-552	39.9166192	-54.1070360	0.38	art. 76(5): 350 M
NS-ECS-553	39.9123056	-54.1131003	0.38	art. 76(5): 350 M
NS-ECS-554	39.9079968	-54.1191699	0.38	art. 76(5): 350 M
NS-ECS-555	39.9036927	-54.1252448	0.38	art. 76(5): 350 M
NS-ECS-556	39.8993934	-54.1313251	0.38	art. 76(5): 350 M
NS-ECS-557	39.8950988	-54.1374106	0.38	art. 76(5): 350 M
NS-ECS-558	39.8908090	-54.1435015	0.38	art. 76(5): 350 M
NS-ECS-559	39.8865240	-54.1495976	0.38	art. 76(5): 350 M
NS-ECS-560	39.8822437	-54.1556989	0.38	art. 76(5): 350 M
NS-ECS-561	39.8779683	-54.1618056	0.38	art. 76(5): 350 M
NS-ECS-562	39.8736976	-54.1679175	0.38	art. 76(5): 350 M
NS-ECS-563	39.8694317	-54.1740347	0.38	art. 76(5): 350 M
NS-ECS-564	39.8651706	-54.1801571	0.38	art. 76(5): 350 M
NS-ECS-565	39.8609142	-54.1862847	0.38	art. 76(5): 350 M
NS-ECS-566	39.8566627	-54.1924176	0.38	art. 76(5): 350 M
NS-ECS-567	39.8524160	-54.1985557	0.38	art. 76(5): 350 M
NS-ECS-568	39.8481741	-54.2046990	0.38	art. 76(5): 350 M
NS-ECS-569	39.8439370	-54.2108476	0.38	art. 76(5): 350 M
NS-ECS-570	39.8397047	-54.2170013	0.38	art. 76(5): 350 M
NS-ECS-571	39.8354773	-54.2231603	0.38	art. 76(5): 350 M



Outer limit fixed point	Latitude (decimal degrees in WGS 84)	Longitude (decimal degrees in WGS 84)	Distance to next point (M)	Article 76 provision invoked
NS-ECS-572	39.8312547	-54.2293244	0.38	art. 76(5): 350 M
NS-ECS-573	39.8270369	-54.2354937	0.38	art. 76(5): 350 M
NS-ECS-574	39.8228239	-54.2416682	0.38	art. 76(5): 350 M
NS-ECS-575	39.8186158	-54.2478479	0.38	art. 76(5): 350 M
NS-ECS-576	39.8144125	-54.2540327	0.38	art. 76(5): 350 M
NS-ECS-577	39.8102140	-54.2602227	0.38	art. 76(5): 350 M
NS-ECS-578	39.8060204	-54.2664179	0.38	art. 76(5): 350 M
NS-ECS-579	39.8018317	-54.2726182	0.38	art. 76(5): 350 M
NS-ECS-580	39.7976478	-54.2788236	0.38	art. 76(5): 350 M
NS-ECS-581	39.7934688	-54.2850342	0.38	art. 76(5): 350 M
NS-ECS-582	39.7892946	-54.2912498	0.38	art. 76(5): 350 M
NS-ECS-583	39.7851253	-54.2974706	0.38	art. 76(5): 350 M
NS-ECS-584	39.7809609	-54.3036966	0.38	art. 76(5): 350 M
NS-ECS-585	39.7768014	-54.3099276	0.38	art. 76(5): 350 M
NS-ECS-586	39.7726467	-54.3161637	0.38	art. 76(5): 350 M
NS-ECS-587	39.7684969	-54.3224049	0.38	art. 76(5): 350 M
NS-ECS-588	39.7643520	-54.3286512	0.38	art. 76(5): 350 M
NS-ECS-589	39.7602121	-54.3349025	0.38	art. 76(5): 350 M
NS-ECS-590	39.7560770	-54.3411590	0.38	art. 76(5): 350 M
NS-ECS-591	39.7519468	-54.3474204	0.38	art. 76(5): 350 M
NS-ECS-592	39.7478215	-54.3536870	0.38	art. 76(5): 350 M
NS-ECS-593	39.7437011	-54.3599586	0.38	art. 76(5): 350 M
NS-ECS-594	39.7395857	-54.3662352	0.38	art. 76(5): 350 M
NS-ECS-595	39.7354751	-54.3725169	0.38	art. 76(5): 350 M
NS-ECS-596	39.7313695	-54.3788036	0.38	art. 76(5): 350 M
NS-ECS-597	39.7272688	-54.3850953	0.38	art. 76(5): 350 M

Outer limit fixed point	Latitude (decimal degrees in WGS 84)	Longitude (decimal degrees in WGS 84)	Distance to next point (M)	Article 76 provision invoked
NS-ECS-598	39.7231731	-54.3913921	0.38	art. 76(5): 350 M
NS-ECS-599	39.7190822	-54.3976938	0.38	art. 76(5): 350 M
NS-ECS-600	39.7149963	-54.4040005	0.38	art. 76(5): 350 M
NS-ECS-601	39.7109154	-54.4103123	0.38	art. 76(5): 350 M
NS-ECS-602	39.7068394	-54.4166290	0.38	art. 76(5): 350 M
NS-ECS-603	39.7027684	-54.4229507	0.38	art. 76(5): 350 M
NS-ECS-604	39.6987023	-54.4292774	0.38	art. 76(5): 350 M
NS-ECS-605	39.6946411	-54.4356090	0.38	art. 76(5): 350 M
NS-ECS-606	39.6905849	-54.4419456	0.38	art. 76(5): 350 M
NS-ECS-607	39.6865337	-54.4482872	0.38	art. 76(5): 350 M
NS-ECS-608	39.6824875	-54.4546337	0.38	art. 76(5): 350 M
NS-ECS-609	39.6784462	-54.4609851	0.38	art. 76(5): 350 M
NS-ECS-610	39.6744099	-54.4673415	0.38	art. 76(5): 350 M
NS-ECS-611	39.6703786	-54.4737028	0.38	art. 76(5): 350 M
NS-ECS-612	39.6663523	-54.4800690	0.38	art. 76(5): 350 M
NS-ECS-613	39.6623310	-54.4864401	0.38	art. 76(5): 350 M
NS-ECS-614	39.6583146	-54.4928162	0.38	art. 76(5): 350 M
NS-ECS-615	39.6543033	-54.4991971	0.38	art. 76(5): 350 M
NS-ECS-616	39.6502969	-54.5055829	0.38	art. 76(5): 350 M
NS-ECS-617	39.6462956	-54.5119736	0.38	art. 76(5): 350 M
NS-ECS-618	39.6422993	-54.5183692	0.38	art. 76(5): 350 M
NS-ECS-619	39.6383080	-54.5247697	0.38	art. 76(5): 350 M
NS-ECS-620	39.6343217	-54.5311750	0.38	art. 76(5): 350 M
NS-ECS-621	39.6303404	-54.5375851	0.38	art. 76(5): 350 M
NS-ECS-622	39.6263641	-54.5440002	0.38	art. 76(5): 350 M
NS-ECS-623	39.6223929	-54.5504200	0.38	art. 76(5): 350 M

Outer limit fixed point	Latitude (decimal degrees in WGS 84)	Longitude (decimal degrees in WGS 84)	Distance to next point (M)	Article 76 provision invoked
NS-ECS-624	39.6184267	-54.5568447	0.38	art. 76(5): 350 M
NS-ECS-625	39.6144656	-54.5632742	0.38	art. 76(5): 350 M
NS-ECS-626	39.6105094	-54.5697086	1.17	art. 76(5): 350 M
NS-ECS-627	39.5982731	-54.5894943	0.38	art. 76(5): 350 M
NS-ECS-628	39.5941859	-54.5957887	0.38	art. 76(5): 350 M
NS-ECS-629	39.5901037	-54.6020882	0.38	art. 76(5): 350 M
NS-ECS-630	39.5860264	-54.6083926	0.38	art. 76(5): 350 M
NS-ECS-631	39.5819540	-54.6147020	0.38	art. 76(5): 350 M
NS-ECS-632	39.5778866	-54.6210164	0.38	art. 76(5): 350 M
NS-ECS-633	39.5738242	-54.6273357	0.38	art. 76(5): 350 M
NS-ECS-634	39.5697667	-54.6336600	0.38	art. 76(5): 350 M
NS-ECS-635	39.5657142	-54.6399893	0.38	art. 76(5): 350 M
NS-ECS-636	39.5616667	-54.6463235	0.38	art. 76(5): 350 M
NS-ECS-637	39.5576242	-54.6526626	0.38	art. 76(5): 350 M
NS-ECS-638	39.5535866	-54.6590066	0.38	art. 76(5): 350 M
NS-ECS-639	39.5495540	-54.6653556	0.38	art. 76(5): 350 M
NS-ECS-640	39.5455264	-54.6717095	0.38	art. 76(5): 350 M
NS-ECS-641	39.5415037	-54.6780683	0.38	art. 76(5): 350 M
NS-ECS-642	39.5374861	-54.6844320	0.38	art. 76(5): 350 M
NS-ECS-643	39.5334735	-54.6908006	0.38	art. 76(5): 350 M
NS-ECS-644	39.5294659	-54.6971741	0.38	art. 76(5): 350 M
NS-ECS-645	39.5254632	-54.7035524	0.38	art. 76(5): 350 M
NS-ECS-646	39.5214656	-54.7099356	0.38	art. 76(5): 350 M
NS-ECS-647	39.5174730	-54.7163237	0.38	art. 76(5): 350 M
NS-ECS-648	39.5134854	-54.7227167	0.38	art. 76(5): 350 M
NS-ECS-649	39.5095029	-54.7291145	0.38	art. 76(5): 350 M

Outer limit fixed point	Latitude (decimal degrees in WGS 84)	Longitude (decimal degrees in WGS 84)	Distance to next point (M)	Article 76 provision invoked
NS-ECS-650	39.5055254	-54.7355172	0.38	art. 76(5): 350 M
NS-ECS-651	39.5015528	-54.7419246	0.38	art. 76(5): 350 M
NS-ECS-652	39.4975854	-54.7483370	0.38	art. 76(5): 350 M
NS-ECS-653	39.4936229	-54.7547541	0.38	art. 76(5): 350 M
NS-ECS-654	39.4896655	-54.7611761	0.38	art. 76(5): 350 M
NS-ECS-655	39.4857132	-54.7676029	0.38	art. 76(5): 350 M
NS-ECS-656	39.4817659	-54.7740344	0.38	art. 76(5): 350 M
NS-ECS-657	39.4778236	-54.7804708	0.38	art. 76(5): 350 M
NS-ECS-658	39.4738864	-54.7869120	0.38	art. 76(5): 350 M
NS-ECS-659	39.4699543	-54.7933579	0.38	art. 76(5): 350 M
NS-ECS-660	39.4660272	-54.7998087	0.38	art. 76(5): 350 M
NS-ECS-661	39.4621052	-54.8062642	0.38	art. 76(5): 350 M
NS-ECS-662	39.4581883	-54.8127244	0.38	art. 76(5): 350 M
NS-ECS-663	39.4542764	-54.8191894	0.38	art. 76(5): 350 M
NS-ECS-664	39.4503696	-54.8256592	0.38	art. 76(5): 350 M
NS-ECS-665	39.4464679	-54.8321337	0.38	art. 76(5): 350 M
NS-ECS-666	39.4425713	-54.8386130	0.38	art. 76(5): 350 M
NS-ECS-667	39.4386798	-54.8450969	0.38	art. 76(5): 350 M
NS-ECS-668	39.4347934	-54.8515856	0.38	art. 76(5): 350 M
NS-ECS-669	39.4309121	-54.8580790	0.38	art. 76(5): 350 M
NS-ECS-670	39.4270358	-54.8645771	0.38	art. 76(5): 350 M
NS-ECS-671	39.4231647	-54.8710800	0.38	art. 76(5): 350 M
NS-ECS-672	39.4192987	-54.8775875	0.38	art. 76(5): 350 M
NS-ECS-673	39.4154378	-54.8840997	0.38	art. 76(5): 350 M
NS-ECS-674	39.4115820	-54.8906165	0.38	art. 76(5): 350 M
NS-ECS-675	39.4077313	-54.8971381	0.38	art. 76(5): 350 M



Outer limit fixed point	Latitude (decimal degrees in WGS 84)	Longitude (decimal degrees in WGS 84)	Distance to next point (M)	Article 76 provision invoked
NS-ECS-676	39.4038858	-54.9036643	0.38	art. 76(5): 350 M
NS-ECS-677	39.4000454	-54.9101952	0.38	art. 76(5): 350 M
NS-ECS-678	39.3962101	-54.9167307	0.08	art. 76(5): 350 M
NS-ECS-679	39.3954303	-54.9180623	6.89	art. 76(4)(a)(i): 1% sediment thickness; art. 76(5): 350 M
NS-ECS-680	39.4387896	-55.0551787	59.99	art. 76(4)(a)(i): 1% sediment thickness
NS-ECS-681	39.7440080	-56.2870191	59.63	art. 76(4)(a)(i): 1% sediment thickness
NS-ECS-682	39.0348549	-57.1858243	14.24	art. 76(4)(a)(i): 1% sediment thickness
NS-ECS-683	38.7986407	-57.2187885	14.14	art. 76(4)(a)(i): 1% sediment thickness
NS-ECS-684	38.5697932	-57.2919386	44.44	art. 76(4)(a)(i): 1% sediment thickness
NS-ECS-685	38.8953776	-58.1423589	48.72	art. 76(4)(a)(i): 1% sediment thickness
NS-ECS-686	39.0220681	-59.1706082	41.07	art. 76(4)(a)(i): 1% sediment thickness
NS-ECS-687	39.0190084	-60.0488504	59.95	art. 76(4)(a)(i): 1% sediment thickness
NS-ECS-688	39.2438549	-61.2999535	36.75	art. 76(4)(a)(i): 1% sediment thickness
NS-ECS-689	38.6308664	-61.2823514	23.11	art. 76(4)(a)(i): 1% sediment thickness
NS-ECS-690	38.2977872	-61.5293869	6.24	art. 76(4)(a)(i): 1% sediment thickness
NS-ECS-691	38.2122786	-61.6045603	0.46	art. 76(4)(a)(i): 1% sediment thickness; art. 76(5): 350 M
NS-ECS-692	38.2137904	-61.6142043	0.38	art. 76(5): 350 M
NS-ECS-693	38.2150370	-61.6221078	0.38	art. 76(5): 350 M
NS-ECS-694	38.2162897	-61.6300100	0.38	art. 76(5): 350 M
NS-ECS-695	38.2175487	-61.6379106	0.38	art. 76(5): 350 M

Outer limit fixed point	Latitude (decimal degrees in WGS 84)	Longitude (decimal degrees in WGS 84)	Distance to next point (M)	Article 76 provision invoked
NS-ECS-696	38.2188139	-61.6458099	0.38	art. 76(5): 350 M
NS-ECS-697	38.2200854	-61.6537076	0.38	art. 76(5): 350 M
NS-ECS-698	38.2213631	-61.6616039	0.38	art. 76(5): 350 M
NS-ECS-699	38.2226470	-61.6694986	0.38	art. 76(5): 350 M
NS-ECS-700	38.2239371	-61.6773919	0.38	art. 76(5): 350 M
NS-ECS-701	38.2252335	-61.6852837	0.34	art. 76(5): 350 M
NS-ECS-702	38.2264065	-61.6923887	52.57	art. 76(4)(a)(i): 1% sediment thickness; art. 76(5): 350 M
NS-ECS-703	38.6014840	-62.6999998	60.00	art. 76(4)(a)(i): 1% sediment thickness
NS-ECS-704	38.4824222	-63.9654867	0.92	art. 76(4)(a)(ii): FOS + 60 M
NS-ECS-705	38.4741300	-63.9819042	1.00	art. 76(4)(a)(ii): FOS + 60 M
NS-ECS-706	38.4653432	-63.9999446	1.00	art. 76(4)(a)(ii): FOS + 60 M
NS-ECS-707	38.4567913	-64.0181644	1.00	art. 76(4)(a)(ii): FOS + 60 M
NS-ECS-708	38.4484763	-64.0365586	1.00	art. 76(4)(a)(ii): FOS + 60 M
NS-ECS-709	38.4404007	-64.0551224	1.00	art. 76(4)(a)(ii): FOS + 60 M
NS-ECS-710	38.4325664	-64.0738506	1.00	art. 76(4)(a)(ii): FOS + 60 M
NS-ECS-711	38.4249757	-64.0927382	1.00	art. 76(4)(a)(ii): FOS + 60 M
NS-ECS-712	38.4176305	-64.1117801	1.00	art. 76(4)(a)(ii): FOS + 60 M
NS-ECS-713	38.4105329	-64.1309712	1.00	art. 76(4)(a)(ii): FOS + 60 M
NS-ECS-714	38.4036847	-64.1503063	1.00	art. 76(4)(a)(ii): FOS + 60 M
NS-ECS-715	38.3970877	-64.1697802	1.00	art. 76(4)(a)(ii): FOS + 60 M
NS-ECS-716	38.3907438	-64.1893875	1.00	art. 76(4)(a)(ii): FOS + 60 M
NS-ECS-717	38.3846546	-64.2091232	1.00	art. 76(4)(a)(ii): FOS + 60 M
NS-ECS-718	38.3788217	-64.2289818	1.00	art. 76(4)(a)(ii): FOS + 60 M
NS-ECS-719	38.3732467	-64.2489581	1.00	art. 76(4)(a)(ii): FOS + 60 M
NS-ECS-720	38.3679311	-64.2690466	1.00	art. 76(4)(a)(ii): FOS + 60 M

Outer limit fixed point	Latitude (decimal degrees in WGS 84)	Longitude (decimal degrees in WGS 84)	Distance to next point (M)	Article 76 provision invoked
NS-ECS-721	38.3628763	-64.2892420	1.00	art. 76(4)(a)(ii): FOS + 60 M
NS-ECS-722	38.3580837	-64.3095389	1.00	art. 76(4)(a)(ii): FOS + 60 M
NS-ECS-723	38.3535546	-64.3299318	1.00	art. 76(4)(a)(ii): FOS + 60 M
NS-ECS-724	38.3492900	-64.3504153	1.00	art. 76(4)(a)(ii): FOS + 60 M
NS-ECS-725	38.3452913	-64.3709839	1.00	art. 76(4)(a)(ii): FOS + 60 M
NS-ECS-726	38.3415594	-64.3916321	1.00	art. 76(4)(a)(ii): FOS + 60 M
NS-ECS-727	38.3380954	-64.4123544	1.00	art. 76(4)(a)(ii): FOS + 60 M
NS-ECS-728	38.3349002	-64.4331453	1.00	art. 76(4)(a)(ii): FOS + 60 M
NS-ECS-729	38.3319741	-64.4539990	1.00	art. 76(4)(a)(ii): FOS + 60 M
NS-ECS-730	38.3293194	-64.4749103	1.00	art. 76(4)(a)(ii): FOS + 60 M
NS-ECS-731	38.3269353	-64.4958735	0.39	art. 76(4)(a)(ii): FOS + 60 M
NS-ECS-732	38.3261223	-64.5039645	N/A	art. 76(4)(a)(ii): FOS + 60 M; intersection with a computed provisional equidistance line between Canada and the United States of America







