



**Megapixel IP D/N Vandal Proof PoE
Outdoor Fixed Dome
ACM-7411**

Ver. 090730

Quick Installation Guide



www.acti.com

1

Getting Started

1.1 PACKAGE CONTENTS

ACM-7411 series
(DC12V / PoE)



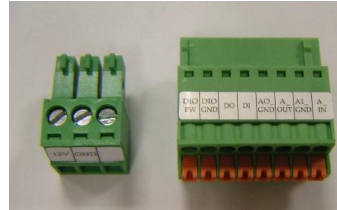
Power Adaptor (Option)



Product CD



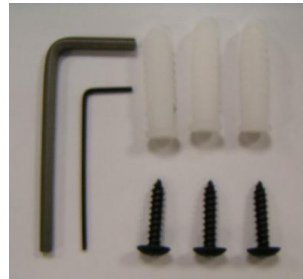
Terminal Blocks for Power, DI/O & Audio



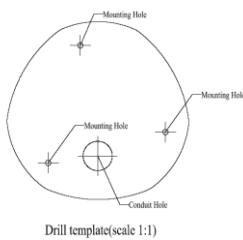
Warranty Card



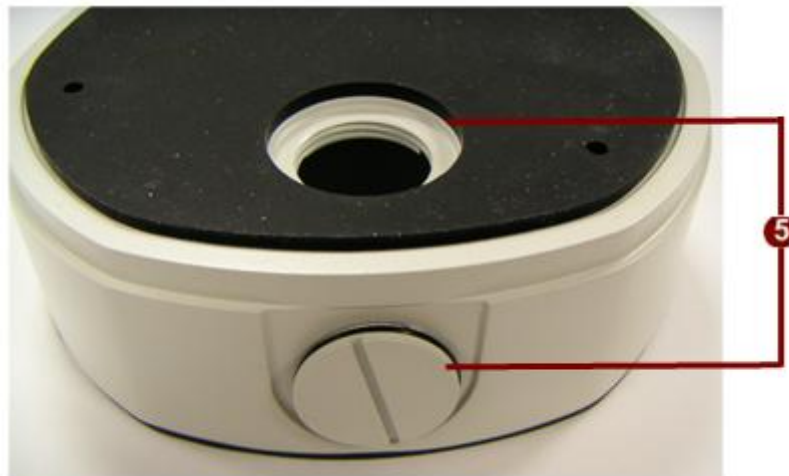
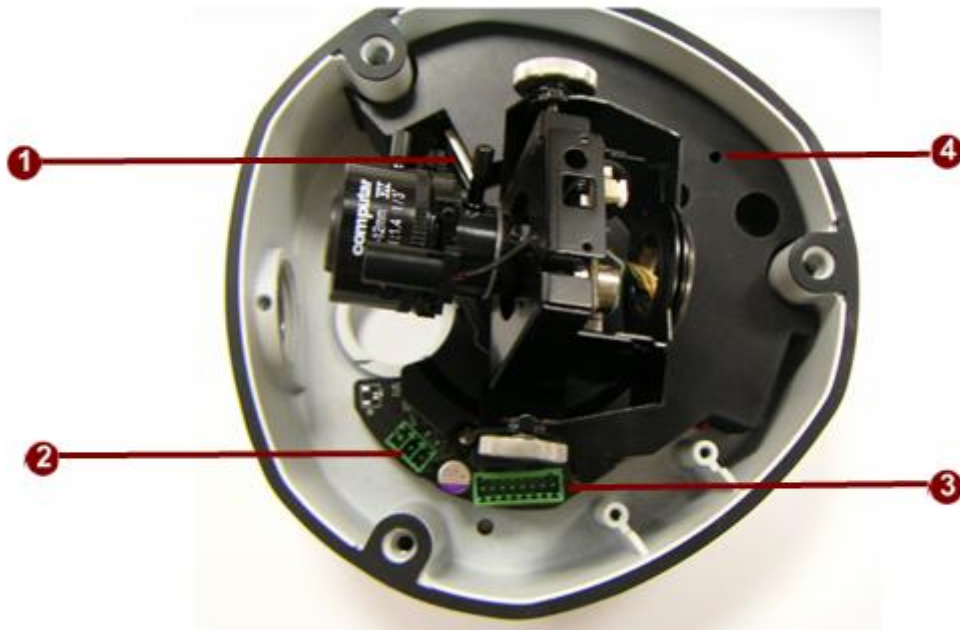
Accessory



Drill Template



1.2 PHYSICAL DESCRIPTION



1. Ethernet Port

The IP device connects to the Ethernet via a standard RJ45 connector. Supporting NWAY, this IP device can auto detect the speed of local network segment (10Base-T/100Base-TX Ethernet).

2. Power Input

If your power input is DC12V. Please follow the description on the connector to connect to power.



PIN	NAME	DESCRIPTION
1	12V	DC Power Input
2	GND	Ground Pin

3. Power Input Audio & DIO input/output



PIN	NAME	DESCRIPTION
1	DIO PW	DC12VIN
2	DIO GND	DGND
3	DO	DO1_TO_OUTSIDE
4	DI	DI1_FROM_OUTSIDE
5	AO_GND	DGND
6	A_OUT	Audio_OUT_LR
7	AI_GND	DGND
8	A_IN	Audio_IN

4. Reset Button

Step 1: Switch off IP device by disconnecting the power cable

Step 2: Press and continue to hold the Reset Button. Reconnect the power cable while continuing to hold the reset button.




Step 3: Keep holding the reset button depressed around 16 seconds, release the reset button. The unit will start up with factory default settings.

5. Conduit Hole

These conduit holes are used for cables to go through.

1.3 INSTALLATION PROCEDURE

There are three types of installation of this IP outdoor rugged dome series.

	Surface mount	Flush mount	Wall mount
Pictures			
Optional Bracket required		●	●

The mounting procedure can be divided into two parts,

1st: Connect the IP outdoor rugged dome series

2nd: Mount the IP outdoor rugged dome series

1.3.1 Connect the IP Outdoor Rugged Dome

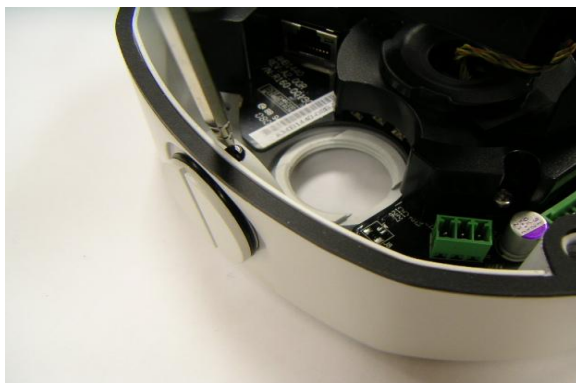
1.3.1.1 Remove the cover

Remove the dome cover with special hex wrench in the accessory bag.



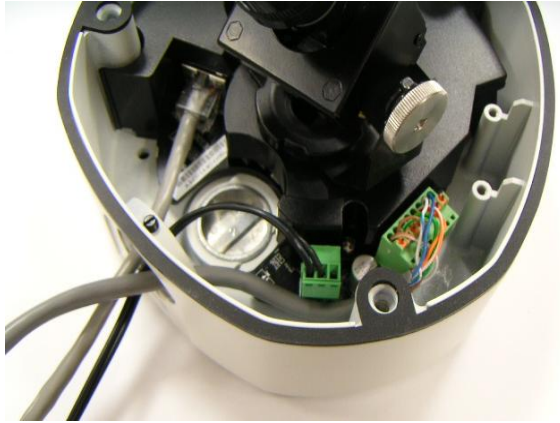
1.3.1.2 Insert the cabl

There are two conduit holes, one is at the dome bottom and the other one is at the side of rugged dome with plug. Remove the plug if your cable will go through the one at the side of rugged dome



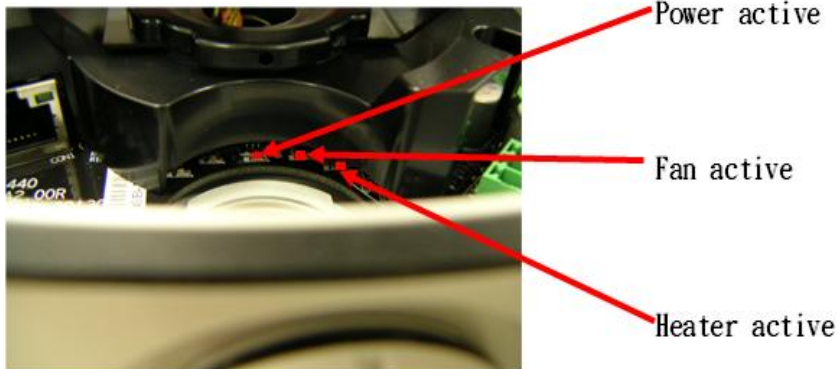
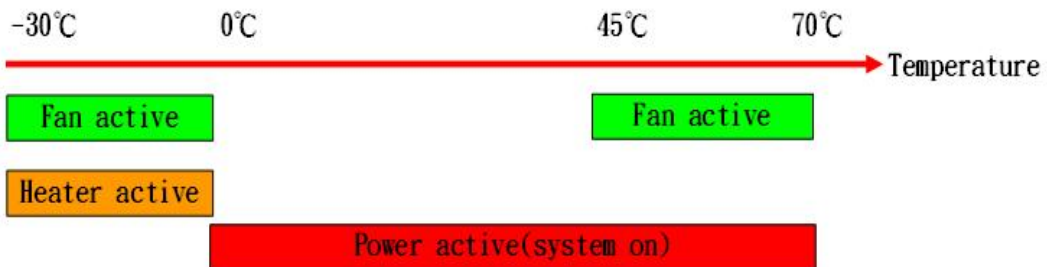
1.3.1.3 Connect cables to connectors

Please follow the instruction at Chapter 2: Physical Description, for how to connect to each connector.

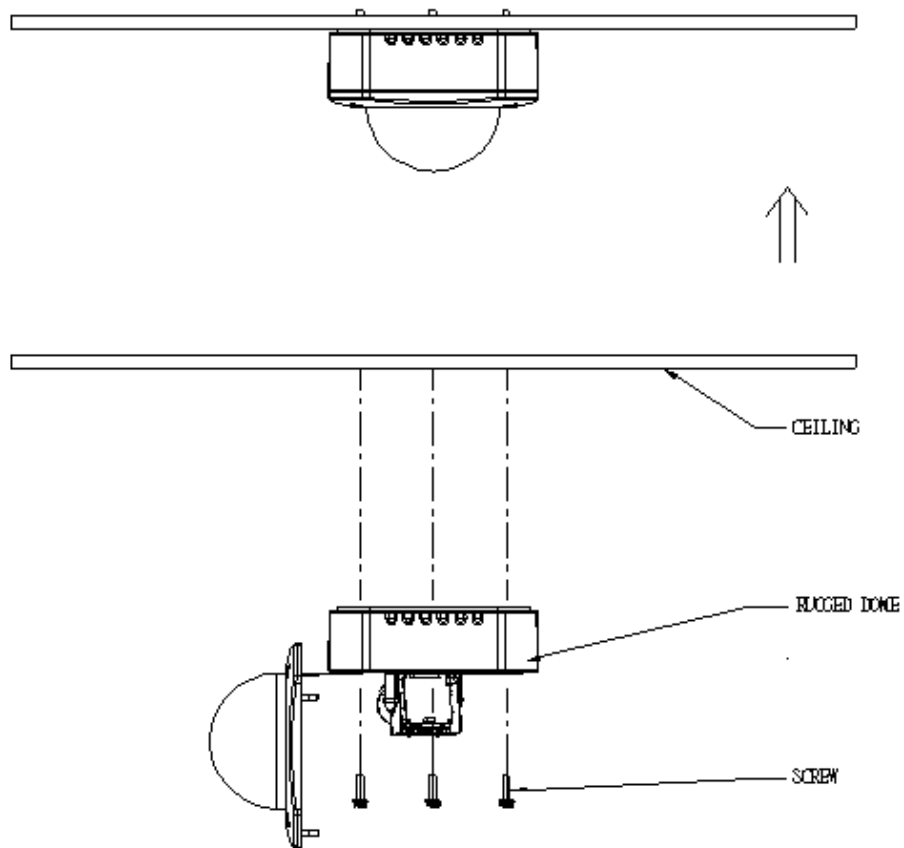


1.3.1.4 LED Description

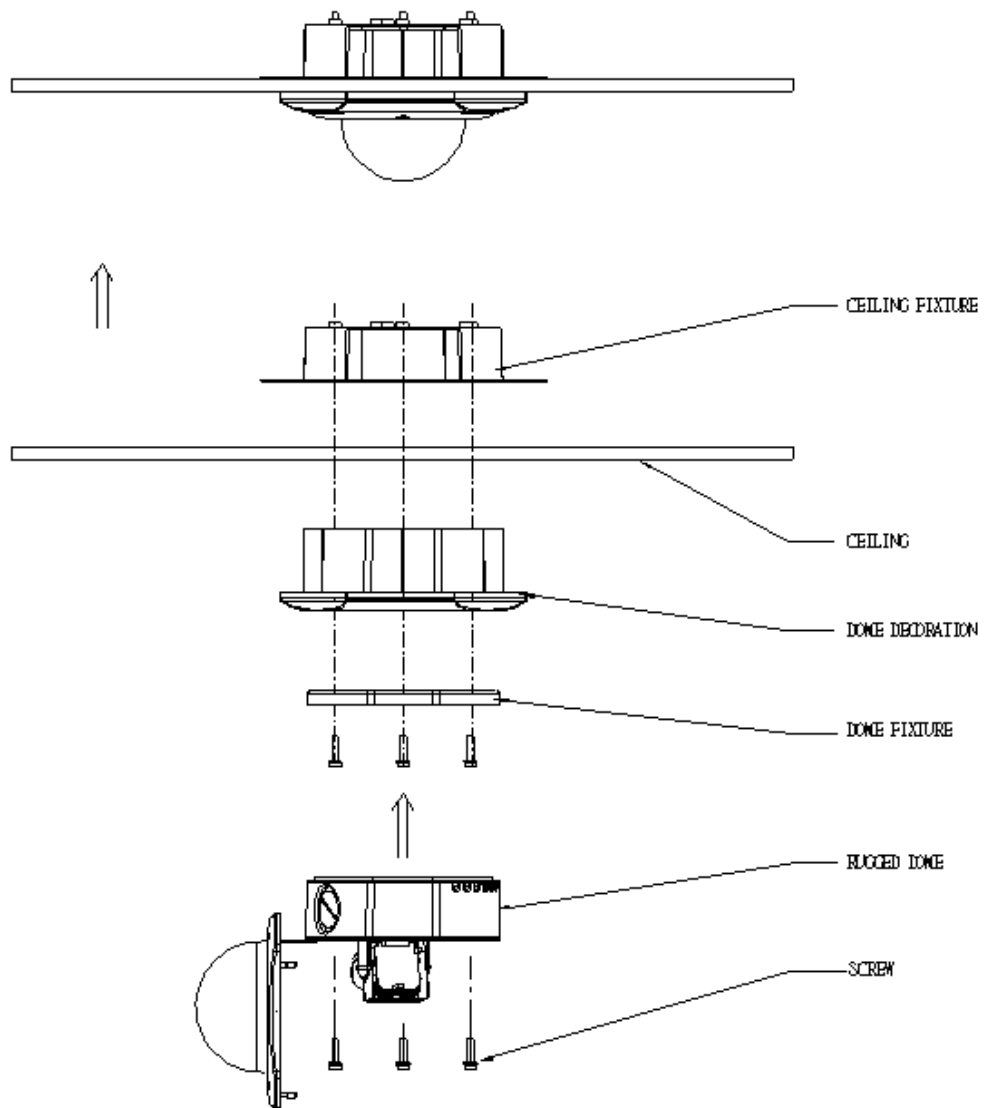
There are three LEDs in the system. They are indicators for power, fan and heater respectively. According to operating temperature, the different LED will be lighted for different situation.



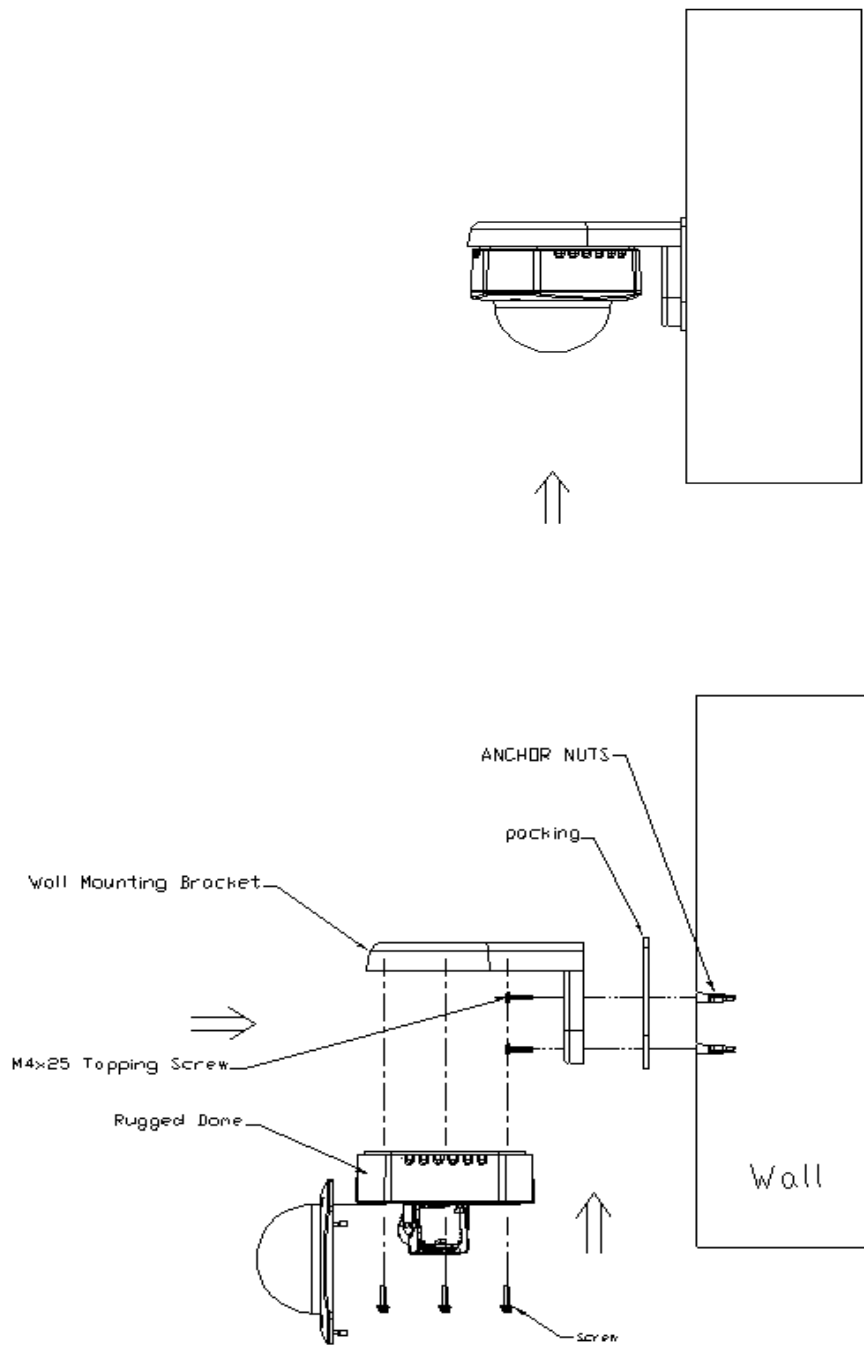
1.4 Mount the IP Outdoor Fixed Dome (Surface)



1.5 Mount the IP Outdoor Fixed Dome (Flush)



1.6 Mount the IP Indoor Fixed Dome (Wall)



2

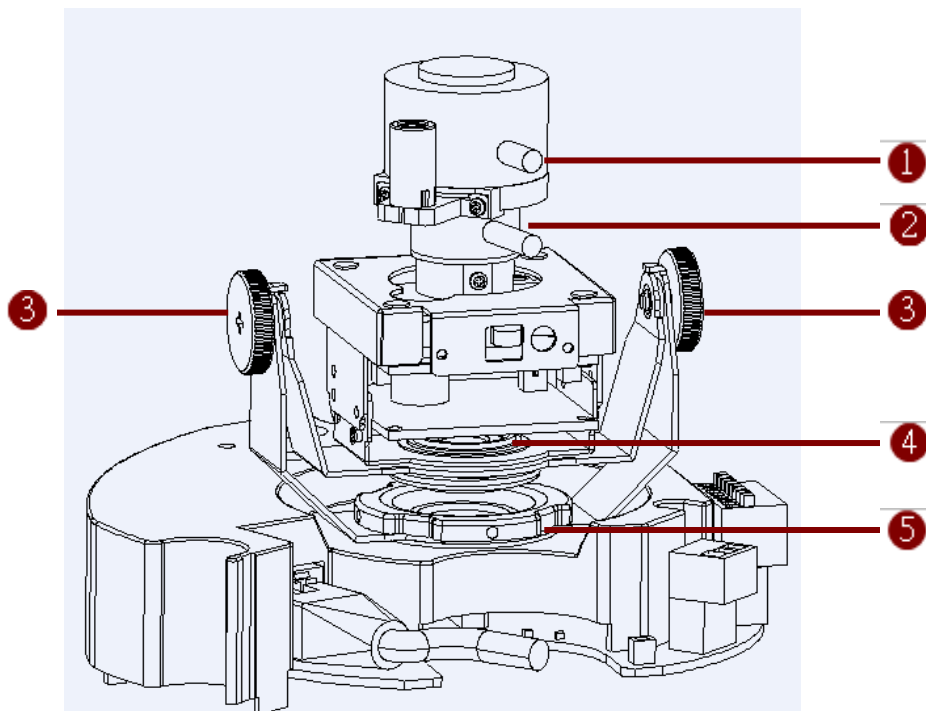
Adjust the camera

2.1 Adjust zoom and focus

Please adjust the camera direction first. Then move the focus and the zoom lever at the picture 1 to adjust the zoom and the focus. Fix the zoom and focus after adjusting.

2.2 Adjust camera functions

Refer to picture 1 for what can be adjusted and how to adjust.



Picture 1

1. focus lever
2. Zoom lever
3. Tilt adjustment screw
4. Image adjustment axis
5. Pan adjustment screw

3

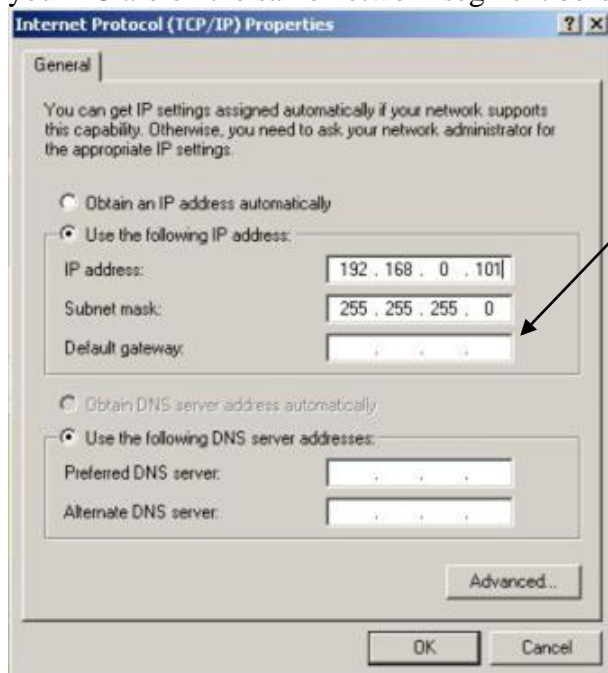
Quick Tour

This section guides you with a quick tour on this IP device.

3.1 Configure this IP Device

3.1.1 Make sure network environment

Default IP of this IP device is 192.168.0.100. Please make sure this IP device and your PC are on the same network segment before running the installation.

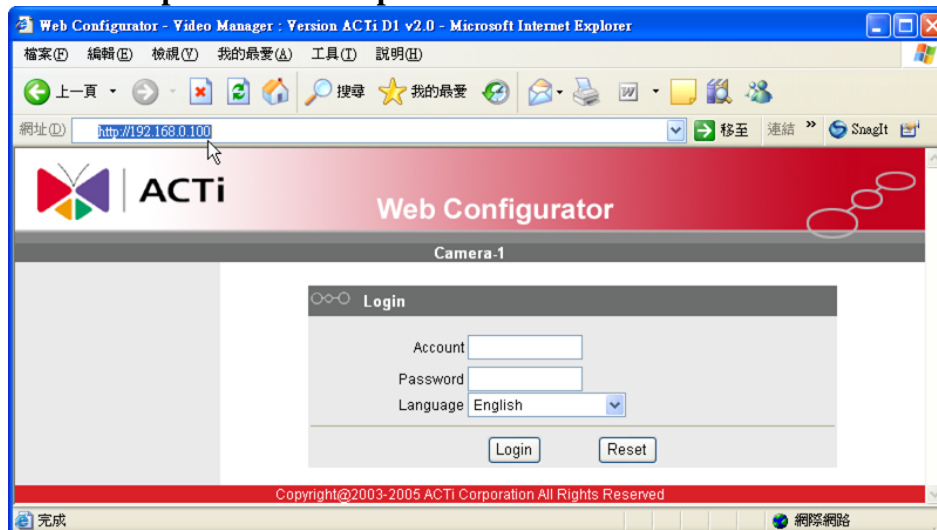


Please set the settings as below.

IP address: 192.168. 0.xxx
Subnet mask: 255.255.255. 0

(NOTE: xxx should be a number from 1 to 254, but 100 is excepted.)

3.1.2 Open Internal Explorer with IP address






NOTE: If your web browser is earlier than IE6, then download IE6 is recommended.



NOTE: This IP device default IP address is set to 192.168.0.100

3.1.3 Login with default administrator's account & password



NOTE: Default administrator account is set to **Admin**, password is set to **123456**, and click  button.

3.1.4 Preview the video



3.1.5 Set the new IP address

The screenshot shows the ACTi Web Configurator interface for 'Camera-1'. The left sidebar contains navigation options: Video Display, Host Setting, WAN Setting, Date Setting, Video Setting, Video Adjust, User Account, System Info, Firmware, Factory Default, Save Reboot, and Logout. The main content area is divided into three sections:

- WAN Setting ***: Includes radio buttons for 'Dynamic IP Address' (selected) and 'Static IP Address'. Below are input fields for IP Address (192, 168, 0, 100), Subnet Mask (255, 255, 255, 0), and ISP Gateway (192, 168, 0, 254). There are also fields for User Name and Password under the PPPoE section. Buttons for 'Apply' and 'Reset' are at the bottom.
- DNS Server Setting**: Includes input fields for Primary DNS Server and Secondary DNS Server. Buttons for 'Apply' and 'Reset' are at the bottom.
- DDNS Server Setting**: Includes a dropdown for DDNS Type (set to 'Disable'), a dropdown for Service ISP (set to 'members.dyndns.org'), and input fields for Host Name, User Name, and Password. Buttons for 'Apply' and 'Reset' are at the bottom.



Numbered callouts (1-17) point to various elements: 1 (Dynamic IP), 2 (Static IP), 3-5 (IP Address, Subnet Mask, ISP Gateway), 6 (PPPoE), 7-8 (User Name, Password), 9 (Apply), 10 (Reset), 11-12 (DNS Servers), 13 (DDNS Type), 14 (Service ISP), 15-17 (Host Name, User Name, Password).

Copyright@2003-2006 ACTi Corporation All Right Reserved

***IP Address** : The default IP address is 192.168.0.100.

***Subnet Mask** : The default subnet mask is 255.255.255.0

***Click**  button

	<p>NOTE: In your Client PC, please make sure the setting of Network Connections Type is set to Auto Negotiation, since this IP device follows MII standard. Otherwise, you might not see the live image.</p>
	<p>IMPORTANT: After the IP address is changed, please record this IP address. There's no way to connect to the IP device if user forgets the new IP address.</p>

3.1.6 Check Default Video Setting

The screenshot shows the ACTi Web Configurator interface for Camera-1. The left sidebar contains navigation options: Video Display, Host Setting, WAN Setting, Date Setting, Video Setting, Video Adjust, User Account, System Info, Firmware, Factory Default, Save Reboot, and Logout. The main content area is titled 'Version V2.0 - Video Setting' and contains the following configuration fields with red numbered callouts:

- 1: Camera Name (Camera-1)
- 2: Streaming Method (TCP Only)
- 3: Audio In (Enabled)
- 4: Multicast IP (228.5.6.1)
- 5: Multicast TTL (255)
- 6: IGMP (Disabled)
- 7: Analog Video (NTSC)
- 8: Resolution (N352x240)
- 9: Bitrate (1.2M)
- 10: Frame Rate Mode (Constant)
- 11: Frame Rate (30)
- 12: Serial Port Baud Rate (9600)
- 13: Serial Port Control (8,None,1)
- 14: Video Control Port (6001)
- 15: Video Streaming Port (6002)
- 16: Video Multicast Port (5000)
- 17: Apply button
- 18: Reset button

Copyright©2003-2006 ACTi Corporation All Right Reserved

3.1.7 Click **Save Reboot** to restore all settings and please wait about 30 seconds for system reboot.