

# BURNING PHYLOGENIES: FIRE, MOLECULAR EVOLUTIONARY RATES, AND DIVERSIFICATION

Miguel Verdú,<sup>1,2</sup> Juli G. Pausas,<sup>3,4</sup> José Gabriel Segarra-Moragues,<sup>1,5</sup> and Fernando Ojeda<sup>6,7</sup>

<sup>1</sup>Centro de Investigaciones sobre Desertificación (CSIC-UV-GV), Apdo Oficial, 46470 Albal (Valencia), Spain

<sup>2</sup>E-mail: Miguel.Verdu@uv.es

<sup>3</sup>Centro de Estudios Ambientales del Mediterráneo (CEAM), C/ Charles R. Darwin 14, Parc Tecnològic, 46980 Paterna, Valencia, Spain and Departament d'Ecologia, Universitat d'Alacant, Apartat Correus 99, 03080, Alacant, Spain

<sup>4</sup>E-mail: juli@ceam.es; pausas@gmail.com

<sup>5</sup>E-mail: J.Gabriel.Segarra@uv.es

<sup>6</sup>Departamento de Biología, Universidad de Cádiz, Campus Río San Pedro, 11510 Puerto Real, Spain

<sup>7</sup>E-mail: fernando.ojeda@uca.es

Received March 12, 2007

Accepted May 21, 2007

Mediterranean-type ecosystems are among the most remarkable plant biodiversity “hot spots” on the earth, and fire has traditionally been invoked as one of the evolutionary forces explaining this exceptional diversity. In these ecosystems, adult plants of some species are able to survive after fire (*resprouters*), whereas in other species fire kills the adults and populations are only maintained by an effective post-fire recruitment (*seeders*). Seeders tend to have shorter generation times than resprouters, particularly under short fire return intervals, thus potentially increasing their molecular evolutionary rates and, ultimately, their diversification. We explored whether seeder lineages actually have higher rates of molecular evolution and diversification than resprouters. Molecular evolutionary rates in different DNA regions were compared in 45 phylogenetically paired congeneric taxa from fire-prone Mediterranean-type ecosystems with contrasting seeder and resprouter life histories. Differential diversification was analyzed with both topological and chronological approaches in five genera (*Banksia*, *Daviesia*, *Lachnaea*, *Leucadendron*, and *Thamnochortus*) from two fire-prone regions (Australia and South Africa). We found that seeders had neither higher molecular rates nor higher diversification than resprouters. Such lack of differences in molecular rates between seeders and resprouters—which did not agree with theoretical predictions—may occur if (1) the timing of the switch from seeding to resprouting (or vice versa) occurs near the branch tip, so that most of the branch length evolves under the opposite life-history form; (2) resprouters suffer more somatic mutations and therefore counterbalancing the replication-induced mutations of seeders; and (3) the rate of mutations is not related to shorter generation times because plants do not undergo determinate germ-line replication. The absence of differential diversification is to be expected if seeders and resprouters do not differ from each other in their molecular evolutionary rate, which is the fuel for speciation. Although other factors such as the formation of isolated populations may trigger diversification, we can conclude that fire acting as a throttle for diversification is by no means the rule in fire-prone ecosystems

**KEY WORDS:** Fire, genetic differentiation, resprouter, seeder, speciation.

Why speciation occurs is a question of paramount importance in biology. The fact that species diversity is not constant either across lineages or across regions has attracted the attention of evolutionary biologists since Darwin's (1859) seminal work.

Diversification has traditionally been thought to be associated with the rate of molecular evolution (Laird et al. 1969; Barraclough and Savolainen 2001; Verdú 2002; Wright et al. 2006) although a lack of association has also been suggested when speciation is

not limited by genetic divergence (Coyne 1994; Barraclough and Savolainen 2001).

Fast rates of molecular evolution have been claimed to be produced in taxa with short generation times because of the inverse correlation between generation time and the number of germ-line cell divisions, and therefore replication induced mutations, per time unit (Laird et al. 1969; Ohta 1993; see Whittle and Johnson 2003 for the limitations to this hypothesis). Aside from generation time, other mechanisms that speed up evolutionary rates include population size and speciation rate (Muse and Gaut 1997). For example, molecular evolutionary rates may be viewed as a consequence of species diversification driven by the isolation of populations and the concomitant reduction in the effective population size, which could potentially accelerate the rate of fixation of alternative alleles (Ohta 1993; Bromham and Cardillo 2003).

Fire-prone ecosystems can be viewed as natural laboratories for studying changes in both molecular evolutionary rates and diversification. Indeed, plants from fire-prone environments provide astonishing examples of species-rich genera that suggest the occurrence of a recent, massive diversification (e.g., *Aspalathus*, Linder 2003; *Arctostaphylos*, Wells 1969; *Erica*, Ojeda 1998; Linder 2003; *Ceanothus*, Hardig et al. 2000; *Ehrharta*, Verboom et al. 2003; *Banksia*, *Eucalyptus*, *Casuarina*, Mast and Givnish 2002, Crisp et al. 2004; *Leucadendron*, Barker et al. 2004; *Thamnochortus*, Hardy and Linder 2005). In these ecosystems, two basic and contrasting life histories allow plants to cope with recurrent fires (Keeley and Zedler 1978; Pausas et al. 2004): one corresponds to species in which adults survive and resprout after fire (*resprouter* life history), and the other includes species in which adults die after fire and populations rely on seeds (often seed dispersal and/or germination is fire-stimulated) for their persistence (*seeder* life history). Although both seeder and resprouter life histories confer resilience to fire at the population level, their effects on the population dynamics are altogether different (Bond and van Wilgen 1996; Pausas 1999a; Ojeda et al. 2005). These two post-fire life histories are widespread and dominant in the woody flora of the different Mediterranean-type ecosystems, and species without any of these two traits are rare and localized in particular environments (Bond and van Wilgen 1996; Keeley and Fotheringham 2000; Verdú 2000; Pausas et al. 2004). Such clear-cut differences in life-history traits led Wells (1969) to suggest that seeders span numerous generations increasing the opportunity for natural selection to act, which would subsequently imply that seeders will diversify more rapidly. After Wells's contribution, further studies have argued that the exceptional species richness in some fire-prone ecosystems results partly from the high speciation rates (Cowling and Pressey 2001; Mast and Givnish 2002; Barraclough 2006).

In fire-prone ecosystems, seeder species are prone to extinction if fire regimes fall outside their range of tolerance, in terms of

time to maturity, adult longevity, and seed bank persistence (the "immaturity risk" *sensu* Keeley and Fotheringham 2000). This is because seeders requiring a longer period to reach maturity than the mean fire interval are eliminated rapidly (Zedler et al. 1983; Clark 1991; Pausas 1999b). In such environments with short fire intervals, long life spans of seeders have no selective advantage. As in these species the trade-off between survival and reproduction is biased toward the latter (Bond and van Wilgen 1996), they tend to have higher fecundity than resprouters (Lamont and Wiens 2003; Pausas et al. 2004). Accordingly, short fire intervals would lead seeders to reproduce earlier, to have higher fecundity, and to live a shorter time (Clark 1991; Le Maitre 1992; Bell and Pate 1996; Lamont and Wiens 2003; Pausas et al. 2004; Pausas and Verdú 2005). Consequently, and because generation time is a function of age at maturity, fecundity, and life span (Leslie 1966), seeders would necessarily have a shorter generation time than resprouters, thus potentially increasing their molecular evolutionary rates and, ultimately, their diversification.

On the other hand, diversification mediated by isolation of populations is expected to be more marked in seeders (Cowling and Pressely 2001). This is because fluctuations in population size under recurrent fire are stronger in seeders as the recruitment of a new cohort is preceded by the death of the parent generation (Higgins et al. 2000; Ojeda et al. 2005), thus favoring genetic drift processes (Engen et al. 2005). Besides, this dynamics avoids generation overlapping, which would further increase genetic differentiation among populations (Wade and McCauley 1988; Nunney 1993; Ellner and Hairston 1994).

In contrast, we would not expect differences in molecular rates between seeders and resprouters if the latter accumulate somatic mutations due to higher longevity (Lamont and Wiens 2003) or if there is no link between generation time and mutation rates, as has been reported in some plant species (Whittle and Johnson 2003). Similarly, diversification rates are not expected to differ between seeders and resprouters if mutation rates are not driving diversification (Barraclough and Savolainen 2001).

It remains unknown whether seeders have higher molecular and diversification rates than resprouters. The recent increase in molecular information and phylogenetic methods (Chan and Moore 2002; Paradis 2005; Ree 2005) provides an adequate framework for testing the role of fire in the molecular evolutionary rates and the diversification of species in fire-prone ecosystems.

In this article, we explored whether seeder lineages have (1) higher molecular evolutionary rates, and (2) higher diversification, than resprouter lineages. The first hypothesis was tested by comparing the nucleotide substitution rates in phylogenetically paired taxa with contrasting seeder and resprouter life histories (Muse and Weir 1992). The second hypothesis was explored using two diversification approaches that exploit different sources of phylogenetic information (Chan and Moore 2002). The branching pattern

(topological approach) and the branch length/duration (chronological approach) of the observed phylogenetic trees were compared against trees generated under stochastic diversification models (Chan and Moore 2005; Ree 2005).

## Methods

### MOLECULAR EVOLUTIONARY RATES

We searched DNA sequences of different nuclear (ITS, *ncpGS*) and chloroplast (*atpB-rbcL*, *matK*, *ndhF*, *psbA-trnH*, *rpL16*, *rpS16*, *rpL20-rpS18*, *trnT-L*, *trnL*, *trnL-F*, *trnV*) regions available in the Genbank for congeneric pairs species (plus the outgroup) with contrasting post-fire regeneration life histories (resprouters vs. seeders) (see online Supplementary Appendix S1). Data on life-history strategies were obtained from Beyers (2001), Bond and Midgley (2003), Crisp and Cook (2003), Barker et al. (2004), Pausas et al. (2004), and Hardy and Linder (2005). To ensure phylogenetic independence of the pairs (Felsenstein 2004), they were selected as follows: (1) for species belonging to genera in which the phylogeny was unknown, only one congeneric pair per genus was considered, and a species from another closely related genus was chosen as an outgroup; (2) for genera with published phylogenies, we were able to select more than one pair by checking that the path between the two members of each pair did not intersect with the path of another pair; in this case, the outgroup was also from the same genus (Felsenstein 2004 p. 443). We finally obtained 45 pairs belonging to all the Mediterranean-type ecosystems in which fire has been thought to act as a selective pressure favoring the existence of seeders (Australia, South Africa, California, and the Mediterranean Basin; Cowling et al. 2005; Pausas et al. 2006). Because fire does not appear to have had an important evolutionary role in Chilean flora (Muñoz and Fuentes 1989; Cowling et al. 1996; Keeley 1995), no Chilean taxa were included.

DNA sequences for each species pair (plus the outgroup) were aligned using Clustal X (Thompson et al. 1997) and corrected by visual inspection in SE-AL 2.0 a.11 (Rambaut 1996). The branch lengths were estimated as the expected nucleotide substitutions per site by means of the Relative Rate Test method under maximum likelihood as implemented in the HyPhy software (Kosakovsky Pond et al. 2005). Because time is identical for the two species of each phylogenetic pair, branch lengths can be considered as evolutionary molecular rates. Then, for each DNA region we compared the number of pairs in which seeders had longer branch lengths than resprouters. Looking at the sign rather the magnitude of the difference between branch lengths, we weighted each pair equally avoiding problems with the difference in the branch lengths of the two compared species per pair (Whittle and Johnson 2003). A GTR+I+G model of DNA evolution was selected for all the comparisons (see Wright et al. 2006 for a similar procedure).

We also calculated the molecular rates using Kimura's two parameter model of DNA evolution (Kimura 1980), which yielded similar results (data not shown). Because the demographic processes invoked here to explain higher mutation rates in seeders (genetic drift, isolation of populations, bottlenecks) are expected to affect all the genome (Lewontin and Krakauer 1973; Luikart et al. 2003), we also checked the consistency of the results across DNA regions within each paired comparison. In other words, we checked whether seeders had longer branch lengths in all the DNA regions studied. We used only the sign, not the magnitude, of the difference between seeder and resprouter branch lengths because each DNA region may evolve at different rates. This allowed us to include both coding and noncoding regions in our analysis because they behave in a similar qualitative manner (Barraclough and Savolainen 2001).

### DIVERSIFICATION RATES

We searched the literature to find information on plant genera in fire-prone ecosystems with available data on both phylogeny and post-fire life-history traits. After excluding some genera because of either poor phylogenetic resolution (*Arctostaphylos*, *Ceanothus*, *Casuarina*, *Eucalyptus*, *Protea*) or poor information on the life history of many species (*Genista*), we finally selected five genera: *Banksia* (Proteaceae; Bond and Midgley 2003; Mast and Givnish 2002), *Daviesia* (Fabaceae; Crisp and Cook 2003), *Lachnaea* (Thymeleaceae; Beyers 2001; Robinson 2005), *Leucadendron* (Proteaceae; Barker et al. 2004), and *Thamnochortus* (Restionaceae; Hardy and Linder 2005). These genera encompass different biogeographical regions such as Australia (*Banksia* and *Daviesia*) and South Africa (*Lachnaea*, *Leucadendron*, and *Thamnochortus*) and different life forms such as herbaceous (*Thamnochortus*) and woody species. Nearly all the species of each genus are included in the phylogenies except for *Daviesia* that included only 50% of the species. Incomplete taxon sampling would bias our results only if the sampling was biased regarding our fire-persistence life-history trait, which is not expected to occur given the sampling design (Crisp and Cook 2003). On the other hand, the phylogeny of *Banksia* included a nested clade corresponding to five of the 93 *Dryandra* species. Thus, our results can be interpreted only to the currently considered genus *Banksia* until future molecular studies provide the whole phylogeny of the *Banksia/Dryandra* complex.

As only the consensus or one of the most parsimonious trees were published in the studies cited above, we repeated the phylogenetic reconstruction to recover the most probable trees and thus to account for different sources of uncertainty (topology and branch lengths). Thus, we reconstructed the phylogenies of these five genera in a Bayesian analysis with the help of MrBayes 3.1.2 and the Phylemon web server (Huelsenbeck and Ronquist

2001, Tárraga et al. 2007) by using the Markov Chain Monte Carlo (MCMC) procedure to sample trees reconstructed from the Genbank DNA sequence data deposited by the original authors. For each genus, we first aligned the sequences with Clustal X and then calculated the best-fit model of DNA evolution selected by the hierarchical-likelihood ratio test, as implemented in the HyPhy software (Posada and Crandall 1998; Kosakovsky Pond et al. 2005). The analyses were run for a number of generations that ensured convergence of the chains (ranging from 200,000 to 3,000,000 generations) and trees were sampled every 10 generations. We determined that chains had converged onto the stationary distribution when the average standard deviation of split frequencies was  $< 0.01$ . We also checked that the log-likelihood values stopped increasing with the number of generations. Following the MrBayes manual, the first 25% of the trees were discarded as the burnin of the chain. This arbitrary amount ensured by far that convergence had been reached. Default settings of MrBayes were used. We recovered consensus trees (online Supplementary Appendix S2) that were identical or strongly similar to those published by the authors. Differences consisted only in a few interchanges between two close tips. Chronological diversification methods require an estimation of the temporal duration of the branches. Because all the phylogenies significantly departed from a molecular-clock evolution ( $P \ll 0.05$  for all the Likelihood Ratio Test; HyPhy software), we used the nonparametric rate smoothing method of Sanderson (1997), as implemented in the APE package (Paradis et al. 2004), to transform each tree in a chronogram. The branch lengths of the chronograms are clock-like and scaled to an arbitrary age of the tree of 1.

The topological test of diversification was run in a subset consisting of the 1000 trees with the highest posterior probability found during the MCMC search, using the Symmetree package (Chan and Moore 2005). This method tests if the whole tree experienced significant variation in diversification rates without considering the life-history traits. We calculated two statistical indices: Colless index  $I_c$  (Colless 1982; Heard 1992) and  $M_\pi$  (Chan and Moore 2002, 2004). These indices test the departure of the observed tree topologies from trees generated under an equal-rates Markov model of clade growth (Yule 1924), and each one is sensitive to asymmetry arising at different phylogenetic scales of the tree.  $M_\pi$  is more sensitive to large-scale (i.e., near the root) asymmetry whereas  $I_c$  is more sensitive to small-scale (i.e., near the tips) asymmetry (Chan and Moore 2002). The phylogenetic uncertainty is directly accommodated in this analysis because the probability of diversification rate variation for each tree is weighted by the posterior probability of that tree (see Symmetree users guide). To check if shifts in the diversification rate corresponded to shifts to the seeder life history, we selected 20 asymmetric trees per genus among the trees with higher posterior probability. The nodes in which the diversification rate significantly shifted were identified

with the  $\Delta_1$  and  $\Delta_2$  indices provided by the Symmetree package. We then inspected if a transition from resprouting to seeding, based on parsimony reconstruction (MacClade 4; Maddison and Maddison 2003), had also occurred in such nodes.

The chronological test of diversification was run in a subset of 3000 randomly selected trees from the Bayesian samples of trees in the Key Innovation Test (KIT) program (Ree 2005; available at <http://bioinformatics.org/~rick/software.html>). This method tests whether the evolutionary history of one trait is associated with diversification (i.e., cladogenesis) under the expectation that lineages with the candidate trait have shorter waiting times between cladogenesis events. The waiting times represent relative temporal durations in terms of units of evolutionary changes in the character such that the length of the tree is the total amount of change in the character expected over the whole phylogeny (Ree 2005). We used two different treelength priors (R. Ree, pers. comm.): (1) a prior of 1, following the expectation for a binary character without knowledge of the phylogeny, and (2) a prior corresponding to the average number of parsimony-inferred character changes (10 for *Daviesia*, 5 for *Leucadendron*, 8 for *Lachnaea*, and 9 for *Thamnohortus*; attempts to run the test with *Banksia* were computationally unsuccessful possibly because of the large number of parsimony reconstructed changes (25); parsimony-reconstructions were done in the MacClade 4 software [Maddison and Maddison 2003]). Waiting times of the observed trees are compared against a null distribution generated by a stochastic model of character evolution and cladogenesis (Yule 1924). This method is appropriate for our problem because it is specially well suited for (1) recently evolved traits in which insufficient time has passed for the shift in the diversification rate to asymmetrize the tree topology, and (2) traits with bidirectional evolution (e.g., resprouters may evolve toward seeders and vice versa). Furthermore, the method accommodates uncertainty in the phylogeny. The life-history state for a few species was uncertain and therefore we accommodated such uncertainty by rerunning the test with alternative states. As the results did not change, we only present one of the tests. We finally combined the probabilities of the five diversification tests to analyze whether there is a significant trend across the five genera. This was done by means of the Z-transform test that is superior to Fisher's combined probability test (Whitlock 2005).

## Results

The expected signature of seeders having higher molecular rates than resprouters consistently across different genome regions occurred only in seven of 26 congeneric pairs (Table 1). In the remaining comparisons, the molecular rate either depended on the target DNA region (15 of 26 comparisons; N-d in Table 1) or was consistently higher for resprouters (four out of 24; N-o in Table 1).



**Table 1.** Comparison of evolutionary molecular rates of congeneric resprouter and seeder species across different DNA regions. Resprouter = species that resprout after fire; Seeder = species that do not resprout (killed by fire) and whose population persist from seed bank. The fifth column indicates the life-history trait (R, S) of the species with the higher molecular rate for the different DNA regions (e, equal rate; -, no data available). DNA regions used are (and the order; the fifth column): *atpB-rbcL*, *matK*, *ndhF*, *psbA-trnH*, *rpl16*, *rpS16*, *rpl20-rpS18*, *trnT-L*, *trnL*, *trnL-F*, *trnV*, *ncpGS*, and ITS. An asterisk indicates *rbcL*. For full details see online Supplementary Appendix S1. The last column shows whether the expected consistency across DNA regions of higher molecular rates for the seeder species occurs (Y) or not (N); in the latter case, the inconsistencies may be due to a different trend among the different DNA regions (N-d) or to an observed higher molecular rate in resprouters, that is, an opposite trend to the hypothesis (N-o).

Genus	Resprouter (R)	Seeder (S)	Outgroup	Higher	Consistency across DNA regions
<i>Allocasuarina</i>	<i>A. glareicola</i>	<i>A. distyla</i>	<i>A. nana</i>	R . . . . .	-
<i>Arctostaphylos</i>	<i>A. glandulosa</i>	<i>A. glauca</i>	<i>Arbutus unedo</i>	. . . . . R	-
<i>Baeckea</i>	<i>B. linifolia</i>	<i>B. crassifolia</i>	<i>Callistemon polandii</i>	SS . . . . .	Y
<i>Banksia</i>	<i>B. audax</i>	<i>B. benthamiana</i>	<i>B. laevigata</i>	. . e . . R . . . .	N-d
<i>Banksia</i>	<i>B. elegans</i>	<i>B. cuneata</i>	<i>B. candolleana</i>	. . R . . S-R . . .	N-d
<i>Banksia</i>	<i>B. grossa</i>	<i>B. lanata</i>	<i>B. micrantha</i>	. . S . . . . .	-
<i>Banksia</i>	<i>B. incana</i>	<i>B. laricina</i>	<i>B. dolichostyla</i>	. . S . . . . .	-
<i>Banksia</i>	<i>B. oblongifolia</i>	<i>B. spinulosa collina</i>	<i>B. ericifolia</i>	. . R . . . . .	-
<i>Banksia</i>	<i>B. repens</i>	<i>B. blechnifolia</i>	<i>B. elderiana</i>	. . e . . S . . . .	N-d
<i>Casuarina</i>	<i>C. glauca</i>	<i>C. cristata</i>	<i>Ceuthostoma palawaense</i>	. R . . . . .	-
<i>Ceanothus</i>	<i>C. cordulatus</i>	<i>C. cuneatus</i>	<i>Rhamnus californica</i>	. S . . . . . S	Y
<i>Cryptandra</i>	<i>C. amara</i>	<i>C. lanosiflora</i>	<i>Spyridium parviflorum</i>	. . . . . R	-
<i>Daviesia</i>	<i>D. ulicifolia stenophylla</i>	<i>D. acicularis</i>	<i>D. wyattiana</i>	. . . . . R	-
<i>Daviesia</i>	<i>D. alternifolia</i>	<i>D. cordata</i>	<i>D. divaricata</i>	. . . . . R	-
<i>Daviesia</i>	<i>D. angulata</i>	<i>D. teretifolia</i>	<i>D. dilatata</i>	. . . . . S	-
<i>Daviesia</i>	<i>D. epiphyllum</i>	<i>D. obovata</i>	<i>D. genistifolia</i>	. . . . . S	-
<i>Erica</i>	<i>E. arborea</i>	<i>E. tristis</i>	<i>Daboecia cantabrica</i>	RR . . . . . R	N-o
<i>Eucalyptus</i>	<i>E. glaucina</i>	<i>E. nitens</i>	<i>Corymbia eximia</i>	. . . . . S	-
<i>Genista</i>	<i>G. scorpius</i>	<i>G. triacanthos</i>	<i>Cytisus scoparius</i>	. . . . . S . . R	N-d
<i>Hibiscus</i>	<i>H. tiliaceus</i>	<i>H. splendens</i>	<i>Abutilon fraseri</i>	. . . R . . . . R	-
<i>Juniperus</i>	<i>J. oxycedrus</i>	<i>J. sabina</i>	<i>Cupressus sempervirens</i>	. . . . . S	-
<i>Kunzea</i>	<i>K. ericoides</i>	<i>K. ambigua</i>	<i>Melaleuca viridiflora</i>	SS . . . . .	Y
<i>Lachnaea</i>	<i>L. glomerata</i>	<i>L. diosmoides</i>	<i>L. burchellii</i>	S* . . . R . . . R	N-d
<i>Lachnaea</i>	<i>L. grandiflora</i>	<i>L. leipoldti</i>	<i>L. pusilla</i>	R . . . . . R	N-o
<i>Lachnaea</i>	<i>L. naviculifolia</i>	<i>L. eriocephala</i>	<i>L. pedicellata</i>	S . . S . . S . . S	Y
<i>Leucadendron</i>	<i>L. spissifolium spissifolium</i>	<i>L. laureolum</i>	<i>L. pondoense</i>	. . . . . S	-
<i>Leucadendron</i>	<i>L. brunoides</i>	<i>L. stellare</i>	<i>L. linifolium</i>	. . . . . R	-
<i>Leucadendron</i>	<i>L. salignum</i>	<i>L. discolor</i>	<i>L. modestum</i>	. . . . . S	-
<i>Melaleuca</i>	<i>M. nodosa</i>	<i>M. hypericifolia</i>	<i>Leptospermum scoparium</i>	. . . . . R	-
<i>Mirbelia</i>	<i>M. pungens</i>	<i>M. speciosa</i>	<i>Bossiaea linophylla</i>	. . . . . S . S	Y
<i>Ochrosperma</i>	<i>O. lineare</i>	<i>O. citiodorum</i>	<i>Syncarpia glomulifera</i>	. R . . . . .	-
<i>Phillyrea</i>	<i>Ph. angustifolia</i>	<i>Ph. latifolia</i>	<i>Olea europaea</i>	. . . . R . . S . .	N-d
<i>Pinus</i>	<i>P. canariensis</i>	<i>P. pinaster</i>	<i>P. halepensis</i>	eR . . R . . SS S	N-d
<i>Pinus</i>	<i>P. virginiana</i>	<i>P. clausa</i>	<i>P. contorta</i>	SS . . . . .	Y
<i>Pinus</i>	<i>P. rigida</i>	<i>P. pungens</i>	<i>P. muricata</i>	RS . . e . . R . .	N-d
<i>Protea</i>	<i>P. revoluta</i>	<i>P. laevis</i>	<i>P. acaulos</i>	S . . . S . e R . S	N-d
<i>Protea</i>	<i>P. scolopendriifolia</i>	<i>P. pruinosa</i>	<i>P. cynaroides</i>	e . . . R . ee . R	N-d
<i>Protea</i>	<i>P. speciosa</i>	<i>P. stokoei</i>	<i>P. scabra</i>	e . . . R . ee . e	N-d
<i>Pultenaea</i>	<i>P. myrtoides</i>	<i>P. glabra</i>	<i>Chorizema aciculare</i>	R . . . . S . . . . R	N-d
<i>Thamnochortus</i>	<i>Th. cinereus</i>	<i>Th. rigidus</i>	<i>Th. glaber</i>	Re . . . . . R . .	N-d
<i>Thamnochortus</i>	<i>Th. erectus</i>	<i>Th. insignis</i>	<i>Th. guthierae</i>	SS . . . . . S . .	Y
<i>Thamnochortus</i>	<i>Th. Lucens</i>	<i>Th. dumosus</i>	<i>Th. pellucidus</i>	SR . . . . . e . .	N-d
<i>Thamnochortus</i>	<i>Th. sporadicus</i>	<i>Th. punctatus</i>	<i>Th. platypteris</i>	RR . . . . . R . .	N-o
<i>Thamnochortus</i>	<i>Th. spicigerus</i>	<i>Th. fraternus</i>	<i>Th. pluristachyus</i>	RR . . . . . e . .	N-d
<i>Ulex</i>	<i>U. europaeus</i>	<i>U. parviflorus</i>	<i>Calicotome spinosa</i>	. . . . . R . R	N-o

**Table 2.** Number of congeneric pairs within each DNA region in which the molecular evolutionary rate is higher for each life-history trait. The last column shows whether the hypothesis of seeders having higher molecular rates is supported or not, that is, Y indicates that there are more congeneric pairs in which the molecular rate is higher for seeders than for resprouters; N otherwise.

DNA region	R	S	Equal	Supported
<i>atpB-rbcL</i>	6	8	3	N
<i>matK</i>	8	6	1	N
<i>ndhF</i>	1	0	0	N
<i>psbA-trnH</i>	2	2	2	N
<i>rpL16</i>	1	0	0	N
<i>rpS16</i>	4	2	0	N
<i>rpL20-rpS18</i>	1	0	1	N
<i>trnT-L</i>	1	2	0	Y
<i>trnL</i>	0	0	3	N
<i>trnL-F</i>	5	7	4	N
<i>trnV</i>	1	1	0	N
<i>ncpGS</i>	1	1	1	N
ITS	12	10	0	N

When comparing the congeneric pairs within the same DNA region, seeders had higher molecular rates in only one of the 13 DNA regions studied (Table 2). This is not to say that resprouters have higher molecular rates because many comparisons yielded equal branch lengths between seeders and resprouters (Table 2).

Only in one genus (*Lachnaea*) was there no evidence of asymmetric branching pattern (i.e., differential diversification) as the proportion of trees departing significantly from symmetry is negligible (Table 3). Some uncertainty remains for the rest of genera (*Banksia*, *Daviesia*, *Leucadendron*, and *Thamnochortus*), in which an important proportion of trees showed a topology indicating significant diversification. However, such diversification is not associated with the seeder life-history trait, as none of the nodes in which a shift in the diversification rate was detected corresponded with shifts to the seeder life history.

Supporting this conclusion, the chronological tests also showed that seeders did not have shorter waiting times between

cladogenesis events than resprouters for any of the genera studied (Fig. 1). The same conclusions were obtained when the treelength prior was set to 1 (Fig. 1) or to the average number of parsimony-inferred character changes (data not shown). As expected from these results, the combination of the five probabilities did not show any significant overall pattern ( $z = 0.13$ ;  $P = 0.55$ ;  $z$ -transform test). Thus, these results did not provide any evidence to associate seeder life history with diversification.

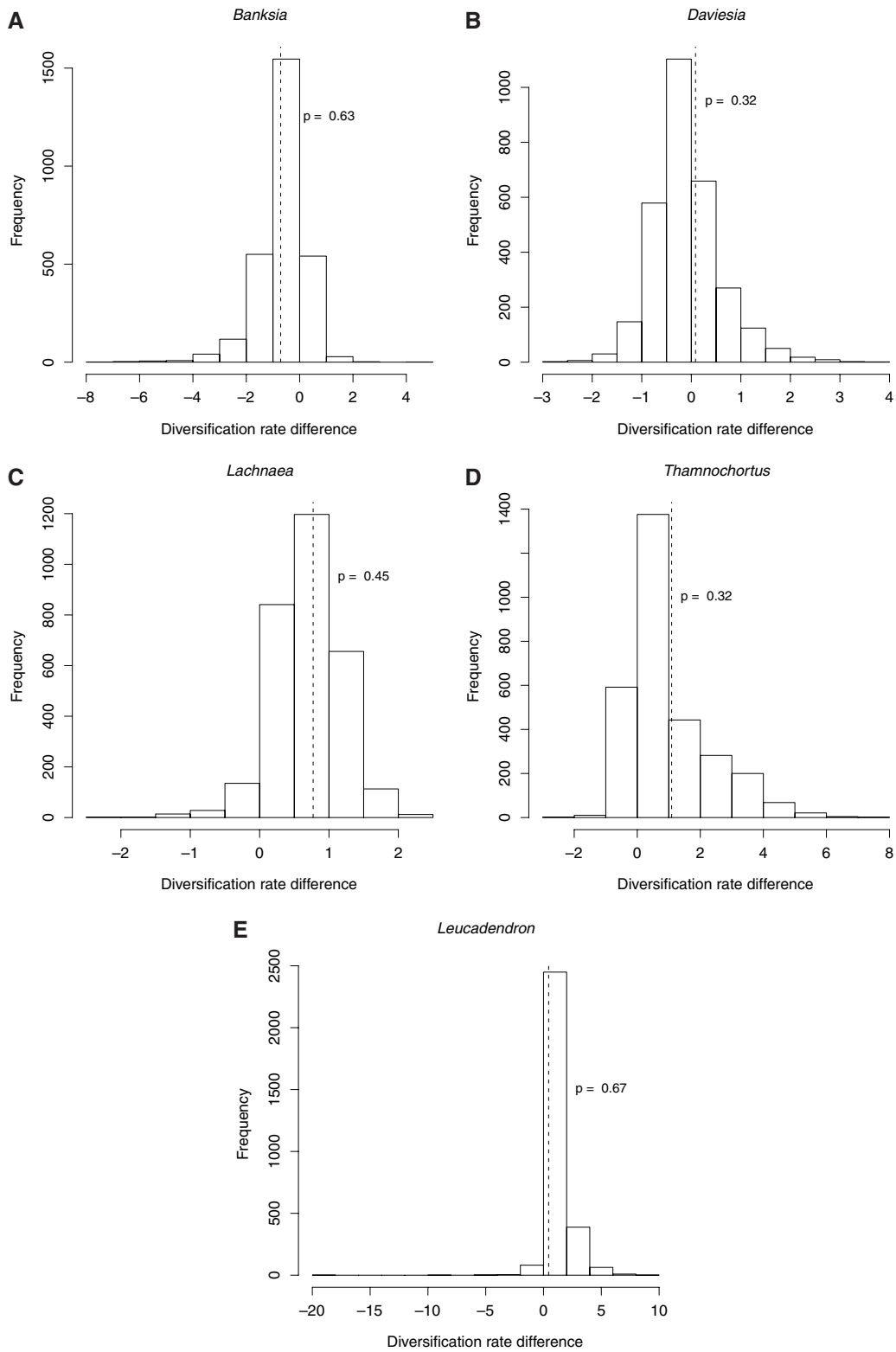
## Discussion

Mediterranean-type ecosystems are included among the main biodiversity hot spots around the world (Myers et al. 2000), and fire is considered one of the main drivers of diversification in these ecosystems (Cowling and Pressey 2001). Recurrent fire (with an average frequency of about 15–50 years; Cowling et al. 1996) has been suggested to trigger dramatic diversification by selecting taxa with short generation times and/or driving the isolation of populations. Because seeders have shorter generation times and their populations are more prone to between-fire fluctuations (Higgins et al. 2000), they are expected to diversify more. Nevertheless, we failed to find a consistent association of fire life histories with diversification rates by either topological or chronological methods. Consequently, seeders do not diversify more than resprouters. When the null hypothesis is not rejected, as is the case in this study, doubts can arise about the methodological approach and/or the data collection. However, the fact that the different lines of evidence reported herein point to this lack of association, enables us to suggest that diversification is not associated with the seeder life history in taxa from fire-prone ecosystems.

The absence of differential diversification is to be expected if seeders and resprouters do not differ from each other in their molecular evolutionary rate, which is the fuel for speciation under the evolutionary rate hypothesis (Barracough and Savolainen 2001; Evans and Gaston 2005). Indeed, we have not found any evidence of seeders having faster evolutionary rates than resprouters when comparing either between DNA regions or between taxa. This result concurs with growing empirical evidence challenging

**Table 3.** Range of  $P$ -values for the two symmetry statistics used to test topological diversification in the five genera under study. The percentage of significant  $P$ -values (i.e.,  $P < 0.05$ ) is also shown. N refers to the number of taxa included in each phylogeny. See Methods section for a description of the statistics.

	N	Ic		M $_{\Sigma}$	
		$P$ -range	%	$P$ -range	%
<i>Banksia</i>	89	0.000–0.988	29.6	0.000–0.879	61.0
<i>Daviesia</i>	46	0.002–0.256	79.5	$6 \times 10^{-5}$ –0.576	75.7
<i>Lachnaea</i>	38	0.0094–0.6562	0.2	0.013–0.820	4.9
<i>Leucadendron</i>	62	0.000–0.6181	88.4	0.000–0.1643	98.4
<i>Thamnochortus</i>	30	0.029–0.450	19.95	0.038–0.774	0.9



**Figure 1.** Frequency distributions of the differences in diversification rates between seeders and resprouters under the null model of chronological diversification for the five genera studied. The dashed line refers to the observed value; its associated *P*-value is also indicated.

the generation-time hypothesis in plants (Bousquet et al. 1992; Whittle and Johnson 2003, but see Catalán et al. 2006). Three different explanations could address the lack of differences in evolutionary rates between the two life-history strategies.

First, differences in evolutionary rates within a seeder-resprouter species pair may be masked if the timing of the switch from seeding to resprouting (or vice versa) occurs near the branch tip, so that most of the branch length evolves under the opposite life-history form (Whittle and Johnson 2003). An indication that recent switches are possible is the existence of species with both seeder and resprouter populations (e.g., *Banksia marginata*, George 1996; *Aspalathus linearis*, van der Bank et al. 1999; *Ceanothus tomentosus*, Schwik and Ackerly 2005; several southern African *Erica* species, Verdaguer and Ojeda 1998). However, such species are rare in nature. Second, in recurrently burned ecosystems, somatic mutations in resprouters might counterbalance the replication-induced mutations in seeders (Lamont and Wiens 2003), although empirical evidence to support this hypothesis is scarce. Third, the relationship between mutations and generation time in plants is unclear because plants do not undergo determinate germ-line replication (Gaut et al. 1996, 1997; Whittle and Johnson 2003).

Speciation may not be limited only by molecular evolutionary rates; it may also be influenced by other factors such as the formation of isolated populations (Ohta 1993; Bromham and Cardillo 2003) and/or strong reductions in genetic variability within fluctuating populations (Ellner and Hairston 1994; Engen et al. 2005). Such fluctuations and concomitant genetic erosion are more marked in organisms with nonoverlapping generations (Ellner and Hairston 1994; Waples 2002), such as seeder plant species from fire-prone environments (Bond and van Wilgen 1996; Ojeda et al. 2005), thus making them more prone to genetic drift and differentiation processes (Wade and McCauley 1988). However, these diversifying seeder populations or potentially “incipient species” (sensu Levin 2000) are also more prone to extinction, because they do not store reproductive potential over generations (Higgins et al. 2000; Ojeda et al. 2005; see Warner and Chesson 1985 for a general overview). This counteracting higher extinction would then account for the seeming lack of overall diversification in seeder lineages from the fire-prone, Mediterranean-type ecosystems reported in this study. Although this possibility deserves further investigation, we can conclude that fire acting as a throttle for diversification is by no means the rule in fire-prone ecosystems.

#### ACKNOWLEDGMENTS

We thank R. Ree and B. R. Moore for their advice on the KIT and SymmeTREE softwares and H. Dopazo for helping with the Phylemon server. B. Lamont provided fire-trait information on some *Banksia* species. We also thank T. Barraclough, P. Catalán, S. González-Martínez, B. Lamont, J. Pannell, X. Picó, and R. Ree for helpful comments on the manuscript.

This work has been partially financed by the PERSIST project (CGL2006-07126/BOS) to JGP and by a research grant attached to a “Ramón y Cajal” contract to FO. JGS-M was granted a contract from the I3P program.

#### LITERATURE CITED

- Barker, N. P., A. Vanderpoorten, C. M. Morton, and J. P. Rourke. 2004. Phylogeny, biogeography, and the evolution of life-history traits in *Leucadendron* (Proteaceae). *Mol. Phylog. Evol.* 33:845–860.
- Barraclough, T. G. 2006. What can phylogenetics tell us about speciation in the Cape flora? *Diver. Dist.* 12:21–26.
- Barraclough, T. G., and V. Savolainen. 2001. Evolutionary rates and species diversity in flowering plants. *Evolution* 55:677–683.
- Bell, T. L., and J. S. Pate. 1996. Growth and fire response of selected Epacridaceae of south-western Australia. *Aust. J. Bot.* 44:509–526.
- Beyers, J. B. P. 2001. The Cape genus *Lachnaea* (Thymelaeaceae): a monograph. *Strelitzia* 11:1–115.
- Bond, W. J., and B. W. Van Wilgen. 1996. *Fire and Plants*, Chapman & Hall, London.
- Bond, W. J., and J. J. Midgley. 2003. The evolutionary ecology of sprouting in woody plants. *Int. J. Plant Sci.* 164:S103–S114.
- Broham, L., and M. Cardillo. 2003. Testing the link between the latitudinal gradient in species richness and rates of molecular evolution. *J. Evol. Biol.* 16: 200–207.
- Bousquet, J., S. H. Strauss, A. H. Doerksen, and R. A. Price. 1992. Extensive variation in evolutionary rate of rbcL gene sequences among seed plants. *Proc. Natl Acad. Sci. USA* 89:7844–7848.
- Catalán, P., P. Torrecilla, J. A. López-Rodríguez, and J. Müller. 2006. Molecular evolutionary rates shed new lights on the relationships of *Festuca*, *Lolium*, *Vulpia* and related grasses (Loliinae, Pooideae, Poaceae). Pp. 45–70. in J. P. Bailey and R. G. Ellis, eds. *Current taxonomic research on the British & European Flora*. Botanical Society of the British Isles. Conference report no. 25. London.
- Chan, K. M. A., and B. R. Moore. 2002. Whole-tree methods for detecting differential diversification rates. *Syst. Biol.* 51:855–865.
- . 2005. SYMMETREE: whole-tree analysis of differential diversification rates. *Bioinformatics* 21:1709–1710.
- Clark, J. S. 1991. Disturbance and tree life history on the shifting mosaic landscape. *Ecology* 72:1102–1118.
- Colless, D. H. 1982. Review of phylogenetics: the theory and practice of phylogenetic systematics. *Syst. Zool.* 31:100–104.
- Cowling, R. M., and R. L. Pressey. 2001. Rapid plant diversification: planning for an evolutionary future. *Proc. Natl Acad. Sci. USA* 98:5452–5457.
- Cowling, R. M., P. W. Rundel, B. B. Lamont, M. K. Arroyo, and M. Arianoutsou. 1996. Plant diversity in Mediterranean-climate regions. *Trends Ecol. Evol.* 11:362–366.
- Cowling, R. M., F. Ojeda, B. B. Lamont, P. W. Rundel, and R. Lechmere-Oertel. 2005. Rainfall reliability, a neglected factor in explaining convergence and divergence of plant traits in fire-prone Mediterranean-climate ecosystems. *Global Ecol. Biogeogr.* 14:509–519.
- Coyne, J. A. 1994. Ernst Mayr and the origin of species. *Evolution* 48:19–30.
- Crisp, M. D., and L. G. Cook. 2003. Phylogeny and evolution of anomalous roots in *Daviesia* (Fabaceae: Mirbelieae). *Int. J. Plant Sci.* 164:603–612.
- Crisp, M., L. Cook, and D. Steane. 2004. Radiation of the Australian flora: what can comparisons of molecular phylogenies across multiple taxa tell us about the evolution of diversity in present-day communities? *Philos. Trans. R. Soc. Lond. B* 359:1551–1571.
- Darwin, C. 1859. *The origin of species by means of natural selection*. John Murray, London.
- Ellner, S., and N. G. Hairston Jr. 1994. Role of overlapping generations in maintaining genetic variation in a fluctuating environment. *Am. Nat.* 143:403–417.



- Engen, S., R. Lande, and B. E. Saether. 2005. Effective size of a fluctuating age-structured population. *Genetics* 170:941–954.
- Evans, K. L., and K. J. Gaston. 2005. Can the evolutionary-rates hypothesis explain species-energy relationships? *Funct. Ecol.* 19:899–915.
- Felsenstein, J. 2004. *Inferring phylogenies*. Sinauer Associates, Sunderland, MA.
- Gaut, B., B. R. Morton, B. C. McCaig, and M. T. Clegg. 1996. Substitution rate comparisons between grasses and palms: synonymous rate differences at the nuclear gene *Adh* parallel rate differences at the plastid gene *rbcL*. *Proc. Natl. Acad. Sci. USA* 93:10274–10279.
- Gaut, B. S., L. G. Clark, J. F. Wendel, and S. V. Muse. 1997. Comparisons of the molecular evolutionary process at *rbcL* and *ndhF* in the grass family (Poaceae). *Mol. Biol. Evol.* 14:769–777.
- George, A. S. 1996. *The Banksia book*. Kangaroo Press, Kenthurst, NSW, Australia. 240 p.
- Hardig, T. M., P. S. Soltis, and D. E. Soltis 2000 Diversification of the North American shrub genus *Ceanothus* (Rhamnaceae): conflicting phylogenies from nuclear ribosomal DNA and chloroplast DNA. *Am. J. Bot.* 87:108–123.
- Hardy, C. R., and H. P. Linder. 2005. Intraspecific variability and timing in ancestral ecology reconstruction: a test case from the Cape flora. *Syst. Biol.* 54:299–316.
- Heard, S. B. 1992. Patterns in tree balance among cladistic, phenetic, and randomly generated phylogenetic trees. *Evolution* 46:1818–1826.
- Higgins, S. I., Pickett, S. T. A., and Bond, W. J. 2000. Predicting extinction risks for plants: environmental stochasticity can save declining populations. *Trends Ecol. Evol.* 15:516–520.
- Huelsenbeck, J. P. and F. Ronquist. 2001. MrBayes: Bayesian inference of phylogeny. *Bioinformatics* 17:754–755.
- Keeley, J. E. 1995. Seed germination patterns in fire-prone Mediterranean-climate regions. Pp. 239–273 in M. T. K. Arroyo, P. H. Zedler and M. D. Fox, eds. *Ecology and biogeography of Mediterranean ecosystems in Chile, California and Australia*. Springer, New York.
- Keeley, J. E., and C. J. Fotheringham. 2000. Role of fire in regeneration from seed. Pp 311–330 in M. Fenner, ed. *The ecology of regeneration in plant communities*. CAB International, Oxford.
- Keeley, J. E., and P. H. Zedler. 1978. Reproduction of chaparral shrubs after fire: a comparison of sprouting and seedling strategies. *Am. Midl. Nat.* 99:142–161.
- Kimura, M. 1980. A simple method for estimating evolutionary rates of base substitutions through comparative studies of nucleotide sequences. *J. Mol. Evol.* 16:111–120.
- Kosakovsky Pond, S. L., S. D. Frost, and S. V. Muse. 2005. HyPhy: hypothesis testing using phylogenies. *Bioinformatics* 21:676–679.
- Laird, C. D., B. L. McConaught, and B. L. McCarthy. 1969. Rate of fixation of nucleotide substitutions in evolution. *Nature* 224:149–154.
- Lamont, B. B., and D. Wiens. 2003. Are seed set and speciation rates always low among species that resprout after fire, and why? *Evol. Ecol.* 17:277–292.
- Le Maitre, D. C.. 1992. The relative advantages of seedling and sprouting in fire-prone environments: a comparison of life histories of *Protea neriifolia* and *P. nitida*. Pp. 123–144 in B. W. Van Wilgen, D. M. Richardson, F. J. Kruger, and H. J. van Hensberge, eds. *Fire in South African mountain fynbos*. Springer-Verlag, Berlin, Germany.
- Leslie, P. H. 1966. The intrinsic rate of increase and the overlap of successive generations in a population of guillemot (*Uria aalge* Pont). *J. Anim. Ecol.* 35:291–301.
- Levin, D. A. 2000. *The origin, expansion, and demise of plant species*. Oxford Univ. Press, New York.
- Lewontin, R. C., and J. Krakauer. 1973. Distribution of gene frequency as a test of the theory of selective neutrality of polymorphism. *Genetics* 74:175–195.
- Linder, H. P. 2003. The radiation of the Cape flora, southern Africa. *Biol. Rev.* 78:597–638.
- Luikart, G., P. R. England, D. Tallmon, S. Jordan, and P. Taberlet. 2003. The power and promise of population genomics: from genotyping to genome typing. *Nat. Rev. Genet.* 4:981–994.
- Maddison, W. P., and D. R. Maddison 2003. *MacClade 4. Analysis of phylogeny and character evolution*. Sinauer Associates, Sunderland, MA.
- Mast, A. R., and T. J. Givnish. 2002. Historical biogeography and the origin of stomatal distributions in *Banksia* and *Dryandra* (Proteaceae) based on their cpDNA phylogeny. *Am. J. Bot.* 89:1311–1323.
- Myers, N., R. A. Mittermeier, C. G. Mittermeier, G. A. B. da Fonseca, and J. Kent. 2000. Biodiversity hotspots for conservation priorities. *Nature* 403:853–858.
- Muñoz, M., and E. R. Fuentes. 1989. Does fire induce shrub germination in the Chilean matorral? *Oikos* 56:177–181.
- Muse, S. V., and B. S. Weir. 1992. Testing for equality of evolutionary rates. *Genetics* 132:269–276.
- Muse, S. V., and B. S. Gaut. 1997. Comparing patterns of nucleotide substitution rates among chloroplast loci using the relative ratio test. *Genetics* 146:393–399.
- Nunney, L. 1993. The influence of mating system and overlapping generations on effective population size. *Evolution* 47:1329–1341.
- Ohta, T. 1993. An examination of the generation-time effect on molecular evolution. *Proc. Natl. Acad. Sci. USA* 90:10676–10680.
- Ojeda, F. 1998. Biogeography of seeder and resprouter *Erica* species in the Cape Floristic Region—Where are the resprouters? *Biol. J. Linn. Soc.* 63:331–347.
- Ojeda, F., F. G. Brun, and J. J. Vergara. 2005. Fire, rain, and the selection of seeder and resprouter life-histories in fire-recruiting, woody plants. *New Phytol.* 168:155–165.
- Paradis, E. 2005. Statistical analysis of diversification with species traits. *Evolution* 59:1–12.
- Paradis, E., J. Claude, and K. Strimmer 2004. APE: analyses of phylogenetics and evolution in R language. *Bioinformatics* 20:289–290.
- Pausas, J. G. 1999a. Mediterranean vegetation dynamics: modelling problems and functional types. *Plant Ecol.* 140:27–39.
- . 1999b. The response of plant functional types to changes in the fire regime in Mediterranean ecosystems. A simulation approach. *J. Veg. Sci.* 10:717–722.
- Pausas, J. G., and M. Verdú 2005. Plant persistence traits in fire-prone ecosystems of the Mediterranean Basin: a phylogenetic approach. *Oikos* 109:196–202.
- Pausas, J. G., R. A. Bradstock, D. A. Keith, J. E. Keeley, and GCTE Fire Network. 2004. Plant functional traits in relation to fire in crown-fire ecosystems. *Ecology* 85:1085–1100.
- Pausas, J. G., J. E. Keeley, and M. Verdú. 2006. Inferring differential evolutionary processes of plant persistence traits in Northern Hemisphere Mediterranean fire-prone ecosystems. *J. Ecol.* 94:31–39.
- Posada, D., and K. A. Crandall 1998. Modeltest: testing the model of DNA substitution. *Bioinformatics* 14:817–818.
- Rambaut, A. 1996. SE-AL: Sequence Alignment Editor. Available at <http://evolve.zoo.ox.ac.uk/software/index.html>.
- Ree, R. 2005. Detecting the historical signature of key innovations using stochastic models of character evolution and cladogenesis. *Evolution* 59:257–265.
- Robinson, C. 2005. *Molecular phylogenetics of Lachnaea (Thymelaeaceae): evidence from plastid and nuclear sequence data*. PhD thesis. University of Johannesburg.

- Sanderson, M. J. 1997. A nonparametric approach to estimating divergence times in the absence of rate constancy. *Mol. Biol. Evol.* 14:1218–1231.
- Schwilk, D. W., and D. D. Ackerly. 2005. Is there a cost to resprouting? Seedling growth rate and drought tolerance in sprouting and nonsprouting *Ceanothus* (Rhamnaceae). *Am. J. Bot.* 92:404–410.
- Tárraga, J., I. Medina, L. Arbiza, J. Huerta-Cepas, T. Gabaldon, J. Dopazo, and H. Dopazo. 2007. Phylemon: a suite of web tools for molecular evolution, phylogenetics and phylogenomics. *Nucleic Acids Res.* Advance Access published on April 22, 2007. doi:10.1093/nar/gkm224
- Thompson, J. D., T. J. Gibson, F. Plewniak, F. Jeanmougin, and D. G. Higgins. 1997. The ClustalX windows interface: flexible strategies for multiple sequence alignment aided by quality analysis tools. *Nucleic Acids Res.* 24:4876–4882.
- Van Der Bank, M., F. H. van der Bank, and B. E. van Wyk. 1999. Evolution of sprouting versus seeding in *Aspalathus linearis*. *Plant Syst. Evol.* 219:27–38.
- Verdaguer, D. and F. Ojeda 2005. Evolutionary transition from resprouter to seeder life history in two *Erica* (Ericaceae) species: insights from seedling axillary buds *Ann. Bot.* 95:593–599.
- Verboom, G. A., H. P. Linder, and W. D. Stock. 2003. Phylogenetics of the grass genus *Ehrharta*: evidence for radiation in the summer-arid zone of the South African Cape. *Evolution* 57:1008–1021.
- Verdú, M. 2000. Ecological and evolutionary differences between Mediterranean seeders and resprouters. *J. Veg. Sci.* 11:265–268.
- . 2002. Age at maturity and diversification in woody angiosperms. *Evolution* 56:1352–1361.
- Wade, M. J., and D. E. McCauley. 1988. The effects of extinction and colonization on the genetic differentiation of populations. *Evolution* 42:995–1005.
- Waples, R. S. 2002. Evaluating the effect of stage-specific survivorship on the  $N_e/N$  ratio. *Mol. Ecol.* 11:1029–1037.
- Warner, R. R., and P. L. Chesson. 1985. Coexistence mediated by recruitment fluctuations: a field guide to the storage effect. *Am. Nat.* 125:769–787.
- Wells, P. V. 1969. The relation between mode of regeneration and extent of speciation in woody genera of the California chaparral. *Evolution* 23:264–267.
- Whitlock, M. C. 2005. Combining probability from independent tests: the weighted Z-method is superior to Fisher's approach. *J. Evol. Biol.* 18:1368–1373.
- Whittle, C.-A., and M. O. Johnston 2003 Broad-scale analysis contradicts the theory that generation time affects molecular evolutionary rates in plants. *J. Mol. Evol.* 56:223–233.
- Wright, S., J. Keeling, and L. Gillman. 2006. The road from Santa Rosalia: a faster tempo of evolution in tropical climates. *Proc. Natl Acad. Sci. USA* 103:7718–7722.
- Yule, G. U. 1924. A mathematical theory of evolution based on the conclusions of Dr. J. C. Willis, FRS. *Philos. Trans. R. Soc. Lond. B* 213:21–87.
- Zedler, P. H., C. R., Gautier, and G. S. McMaster. 1983. Vegetation change in response to extreme events: the effect of a short interval between fires in California chaparral and coastal scrub. *Ecology* 64:809–818.

Associate Editor: D. Schoen

## Supplementary Material

The following supplementary material is available for this article:

**Appendix S1.** Evolutionary molecular rates for the resprouter–seeder congeneric pairs studied.

**Appendix S2.** Consensus trees for the phylogeny of the five genera used to study diversification (*Banksia*, *Daviesia*, *Lachnaea*, *Thamnochortus*, *Leucadendron*).

This material is available as part of the online article from:

<http://www.blackwell-synergy.com/doi/abs/10.1111/j.1558-5646.2007.00187.x>

(This link will take you to the article abstract).

Please note: Blackwell Publishing is not responsible for the content or functionality of any supplementary materials supplied by the authors. Any queries (other than missing material) should be directed to the corresponding author for the article.

### Appendix S1

Evolutionary molecular rates for the resprouter-seeder congeneric pairs studied. R, S and Outgroup indicate the expected nucleotide substitutions per site for the resprouter, seeder and outgroup species under the GTR+I+G model of DNA evolution. Resprouter = species that resprouts after fire; Seeder = species that do not resprout (killed by fire) and whose population persists from the seed bank.

Genus	Resprouter (R)	Seeder (S)	Outgroup	DNA region	R	S	Outgroup
<i>Allocasuarina</i>	<i>A. glareicola</i>	<i>A. distyla</i>	<i>A. nana</i>	<i>matK</i>	0.0007199	0	0.0043157
<i>Arctostaphylos</i>	<i>A. glandulosa</i>	<i>A. glauca</i>	<i>Arbutus unedo</i>	ITS	34.1381	2.49586	9.36374
<i>Baeckea</i>	<i>B. linifolia</i>	<i>B. crassifolia</i>	<i>Callistemon polandii</i>	<i>matK</i>	5.67122	18.3594	8.28857
<i>Baeckea</i>	<i>B. linifolia</i>	<i>B. crassifolia</i>	<i>Callistemon polandii</i>	<i>rbcL-atpB</i>	3.42145	8.376	34.1546
<i>Banksia</i>	<i>B. audax</i>	<i>B. benthamiana</i>	<i>B. laevigata</i>	<i>psbA-trnH</i>	0	0	0.0056862
<i>Banksia</i>	<i>B. audax</i>	<i>B. benthamiana</i>	<i>B. laevigata</i>	<i>trnT-L</i>	0.00202146	0	0.00604609
<i>Banksia</i>	<i>B. elegans</i>	<i>B. cuneata</i>	<i>B. candolleana</i>	<i>psbA-trnH</i>	0.045626	0	0.0167989
<i>Banksia</i>	<i>B. elegans</i>	<i>B. cuneata</i>	<i>B. candolleana</i>	<i>trnL-F</i>	28.6278	6.00662	7.57128
<i>Banksia</i>	<i>B. elegans</i>	<i>B. cuneata</i>	<i>B. candolleana</i>	<i>trnT-L</i>	0.00402916	0.00466455	0.0099171
<i>Banksia</i>	<i>B. grossa</i>	<i>B. lanata</i>	<i>B. micrantha</i>	<i>psbA-trnH</i>	0	0.0247463	0.0053873
<i>Banksia</i>	<i>B. incana</i>	<i>B. laricina</i>	<i>B. dolichostyla</i>	<i>psbA-trnH</i>	14.3293	23.1284	5.65241
<i>Banksia</i>	<i>B. oblongifolia</i>	<i>B. spinulosa</i>	<i>B. ericifolia</i>	<i>psbA-trnH</i>	0.04452	0.0065782	0.0158487
<i>Banksia</i>	<i>B. repens</i>	<i>B. blechnifolia</i>	<i>B. elderiana</i>	<i>psbA-trnH</i>	0	0	0
<i>Banksia</i>	<i>B. repens</i>	<i>B. blechnifolia</i>	<i>B. elderiana</i>	<i>trnT-L</i>	0	0.00200189	0.010078
<i>Casuarina</i>	<i>C. glauca</i>	<i>C. cristata</i>	<i>Ceuthostoma palawaense</i>	<i>matK</i>	0.0024784	0	0.0252816
<i>Ceanothus</i>	<i>C. cordulatus</i>	<i>C. cuneatus</i>	<i>Rhamnus californica</i>	ITS	0.028664	0.0407253	0.147333
<i>Ceanothus</i>	<i>C. cordulatus</i>	<i>C. cuneatus</i>	<i>Rhamnus californica</i>	<i>matK</i>	0.00160551	0.00470702	0.0853072
<i>Cryptandra</i>	<i>C. amara</i>	<i>C. lanosiflora</i>	<i>Spyridium parviflorum</i>	ITS	0.0209174	0.0199828	0.0608617

<i>Daviesia</i>	<i>D. ulicifolia stenophylla</i>	<i>D. acicularis</i>	<i>D. wyattiana</i>	ITS	37.5058	13.2508	36.857
<i>Daviesia</i>	<i>D. alternifolia</i>	<i>D. cordata</i>	<i>D. divaricata</i>	ITS	0.0119162	0.0058157	0.0244648
<i>Daviesia</i>	<i>D. angulata</i>	<i>D. teretifolia</i>	<i>D. dilatata</i>	ITS	16.2514	23.883	24.7179
<i>Daviesia</i>	<i>D. epiphyllum</i>	<i>D. obovata</i>	<i>D. genistifolia</i>	ITS	13.2374	23.0499	21.5169
<i>Erica</i>	<i>E. arborea</i>	<i>E. tristis</i>	<i>Daboecia cantabrica</i>	ITS	0.0198734	0.0140334	0.154596
<i>Erica</i>	<i>E. arborea</i>	<i>E. tristis</i>	<i>Daboecia cantabrica</i>	<i>atpB-rbcL</i>	0.0348976	0.00586395	0.0735643
<i>Erica</i>	<i>E. arborea</i>	<i>E. tristis</i>	<i>Daboecia cantabrica</i>	<i>matK</i>	0.00497396	0.00143276	0.0722665
<i>Eucalyptus</i>	<i>E. glaucina</i>	<i>E. nitens</i>	<i>Corymbia eximia</i>	ITS	6.89433	15.8949	7.6112
<i>Genista</i>	<i>G. scorpius</i>	<i>G. triacanthos</i>	<i>Cytisus scoparius</i>	ITS	0.0462299	0.0411727	0.0290826
<i>Genista</i>	<i>G. scorpius</i>	<i>G. triacanthos</i>	<i>Cytisus scoparius</i>	<i>trnL-F</i>	0.672862	3.91092	12.5271
<i>Hibiscus</i>	<i>H. tiliaceus</i>	<i>H. splendens</i>	<i>Abutilon fraseri</i>	<i>rpL16</i>	0.0083199	0.0044991	0.0456568
<i>Juniperus</i>	<i>J. oxycedrus</i>	<i>J. sabina</i>	<i>Cupressus sempervirens</i>	ITS	6.98498	24.2062	34.5223
<i>Kunzea</i>	<i>K. ericoides</i>	<i>K. ambigua</i>	<i>Melaleuca viridiflora</i>	<i>matK</i>	0.0011492	0.0038008	0.0571591
<i>Kunzea</i>	<i>K. ericoides</i>	<i>K. ambigua</i>	<i>Melaleuca viridiflora</i>	<i>atpB-rbcL</i>	0.0012265	0.0012276	0.0406835
<i>Lachnaea</i>	<i>L. glomerata</i>	<i>L. diosmoides</i>	<i>L. burchellii</i>	ITS	0.0079768	0	0.0141267
<i>Lachnaea</i>	<i>L. glomerata</i>	<i>L. diosmoides</i>	<i>L. burchellii</i>	<i>rbcL</i>	0	0.00145199	0.00804055
<i>Lachnaea</i>	<i>L. glomerata</i>	<i>L. diosmoides</i>	<i>L. burchellii</i>	<i>rpS16</i>	8.97973	5.88289	22.2474
<i>Lachnaea</i>	<i>L. grandiflora</i>	<i>L. leipoldti</i>	<i>L. pusilla</i>	ITS	20.8167	15.7516	23.2934
<i>Lachnaea</i>	<i>L. grandiflora</i>	<i>L. leipoldti</i>	<i>L. pusilla</i>	<i>rbcL</i>	0.00376849	0.00300503	0.00758713
<i>Lachnaea</i>	<i>L. naviculifolia</i>	<i>L. eriocephala</i>	<i>L. pedicellata</i>	ITS	0.0041898	0.0102843	0.0042406
<i>Lachnaea</i>	<i>L. naviculifolia</i>	<i>L. eriocephala</i>	<i>L. pedicellata</i>	<i>rbcL</i>	0.000735117	0.000736038	0.00221627
<i>Lachnaea</i>	<i>L. naviculifolia</i>	<i>L. eriocephala</i>	<i>L. pedicellata</i>	<i>rpS16</i>	0	0.00152858	0.00607452
<i>Lachnaea</i>	<i>L. naviculifolia</i>	<i>L. eriocephala</i>	<i>L. pedicellata</i>	<i>trnL-F</i>	0.00371028	0.00719856	0.00413608
	<i>L. spissifolium</i>			ITS			
<i>Leucadendron</i>	<i>spissifolium</i>	<i>L. laureolum</i>	<i>L. pondoense</i>		0.0061519	0.0081804	0.017065
<i>Leucadendron</i>	<i>L. brunioides</i>	<i>L. stellare</i>	<i>L. linifolium</i>	ITS	25.825	4.76347	12.4256
<i>Leucadendron</i>	<i>L. salignum</i>	<i>L. discolor</i>	<i>L. modestum</i>	ITS	0.0056446	0.0071679	0.0137022
<i>Melaleuca</i>	<i>M. nodosa</i>	<i>M. hypericifolia</i>	<i>Leptospermum</i>	ITS	0.0572568	0.0173545	0.264521

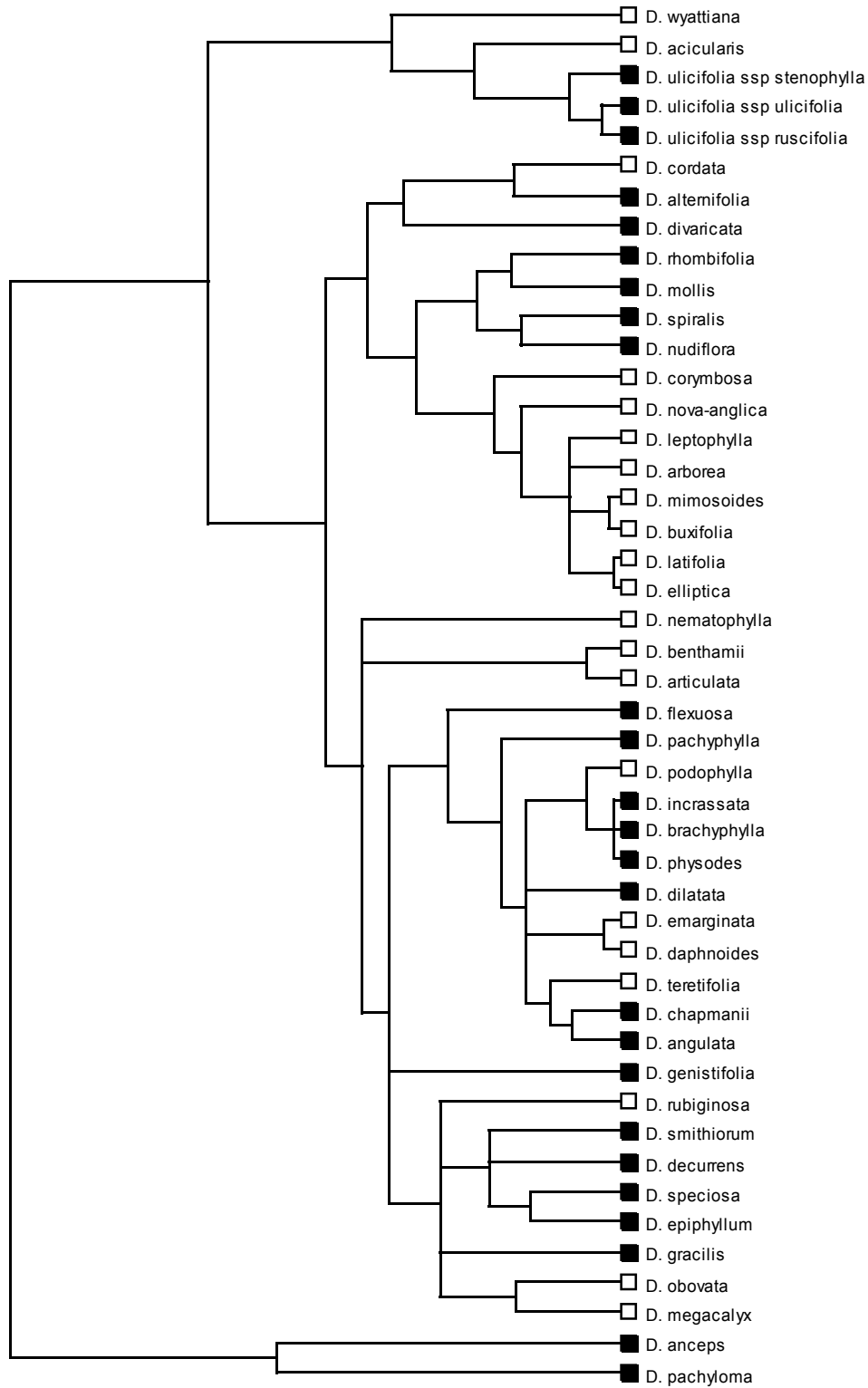
			<i>scoparium</i>				
<i>Mirbelia</i>	<i>M. pungens</i>	<i>M. speciosa</i>	<i>Bossiaea linophylla</i>	ITS	0.0192333	0.0303874	0.198303
<i>Mirbelia</i>	<i>M. pungens</i>	<i>M. speciosa</i>	<i>Bossiaea linophylla</i>	<i>trnL-F</i>	0.0106331	0.0288304	0.145441
<i>Ochrosperma</i>	<i>O. lineare</i>	<i>O. citriodorum</i>	<i>Syncarpia glomulifera</i>	<i>matK</i>	0.0103043	0.0058282	0.0482397
<i>Phillyrea</i>	<i>P. angustifolia</i>	<i>P. latifolia</i>	<i>Olea europaea</i>	<i>trnL-F</i>	0	0.0023369	0.0046863
<i>Phillyrea</i>	<i>P. angustifolia</i>	<i>P. latifolia</i>	<i>Olea europaea</i>	<i>rpS16</i>	0.00250383	0	0.0037486
<i>Pinus</i>	<i>P. canariensis</i>	<i>P. pinaster</i>	<i>P. halepensis</i>	ITS	0.0326875	0.0332518	0.0452544
<i>Pinus</i>	<i>P. canariensis</i>	<i>P. pinaster</i>	<i>P. halepensis</i>	<i>rpL20- rpS18</i>	0.00705018	0.00173926	0.00349047
<i>Pinus</i>	<i>P. canariensis</i>	<i>P. pinaster</i>	<i>P. halepensis</i>	<i>matK</i>	0.00122155	0.000603494	0.00424158
<i>Pinus</i>	<i>P. canariensis</i>	<i>P. pinaster</i>	<i>P. halepensis</i>	<i>rbcL</i>	0	0	0
<i>Pinus</i>	<i>P. canariensis</i>	<i>P. pinaster</i>	<i>P. halepensis</i>	<i>trnL-F</i>	17.2931	21.9791	21.9791
<i>Pinus</i>	<i>P. canariensis</i>	<i>P. pinaster</i>	<i>P. halepensis</i>	<i>TrnV</i>	0	0.00195541	0.00195167
<i>Pinus</i>	<i>P. virginiana</i>	<i>P. clausa</i>	<i>P. contorta</i>	<i>matK</i>	0	0.00213165	0.0010636
<i>Pinus</i>	<i>P. virginiana</i>	<i>P. clausa</i>	<i>P. contorta</i>	<i>rbcL</i>	28.7786	40.5078	24.7168
<i>Pinus</i>	<i>P. rigida</i>	<i>P. pungens</i>	<i>P. muricata</i>	<i>rpL20- rpS18</i>	0	0	0.00598098
<i>Pinus</i>	<i>P. rigida</i>	<i>P. pungens</i>	<i>P. muricata</i>	<i>matK</i>	0	0.000627216	0.00302353
<i>Pinus</i>	<i>P. rigida</i>	<i>P. pungens</i>	<i>P. muricata</i>	<i>rbcL</i>	34.2157	2.66304	47.743
<i>Pinus</i>	<i>P. rigida</i>	<i>P. pungens</i>	<i>P. muricata</i>	<i>trnV</i>	25.6039	8.67329	6.12658
<i>Protea</i>	<i>P. revoluta</i>	<i>P. laevis</i>	<i>P. acaulos</i>	<i>atpB-rbcL</i>	1.25317	12.3969	46.2896
<i>Protea</i>	<i>P. revoluta</i>	<i>P. laevis</i>	<i>P. acaulos</i>	<i>rpS16</i>	14.9054	21.2981	21.2981
<i>Protea</i>	<i>P. revoluta</i>	<i>P. laevis</i>	<i>P. acaulos</i>	<i>trnL</i>	0	0	0
<i>Protea</i>	<i>P. revoluta</i>	<i>P. laevis</i>	<i>P. acaulos</i>	<i>ncpGS</i>	0	0.00706774	0.00140672
<i>Protea</i>	<i>P. revoluta</i>	<i>P. laevis</i>	<i>P. acaulos</i>	<i>trnL-F</i>	0.00772595	0.00253045	0.00257309
<i>Protea</i>	<i>P. scolopendriifolia</i>	<i>P. pruinosa</i>	<i>P. cynaroides</i>	<i>atpB-rbcL</i>	0	0	0.00680566
<i>Protea</i>	<i>P. scolopendriifolia</i>	<i>P. pruinosa</i>	<i>P. cynaroides</i>	<i>rpS16</i>	0.00241888	0.00120759	0.00362024
<i>Protea</i>	<i>P. scolopendriifolia</i>	<i>P. pruinosa</i>	<i>P. cynaroides</i>	<i>trnL</i>	0	0	0.00261323



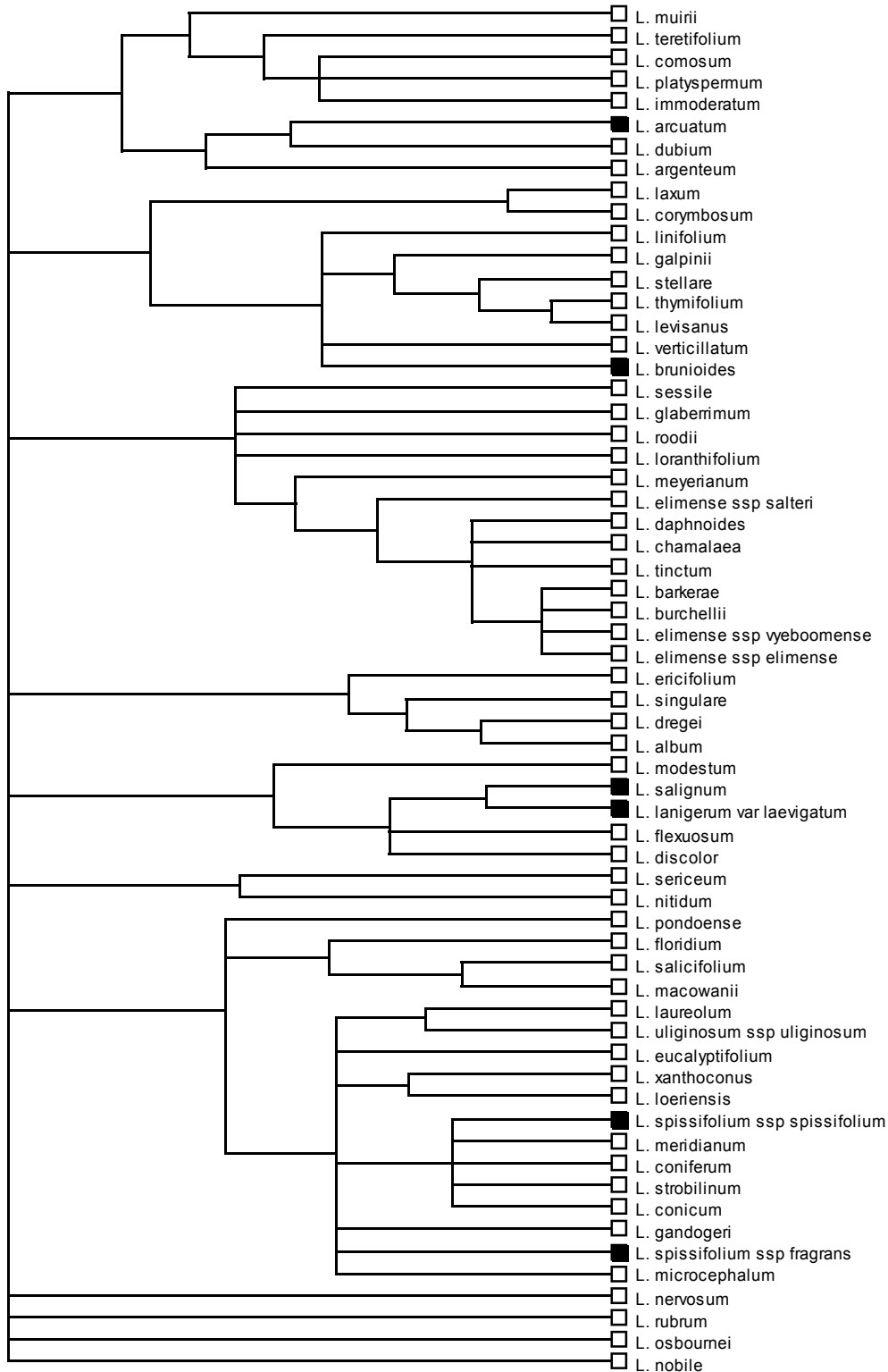
<i>Protea</i>	<i>P. scolopendriifolia</i>	<i>P. pruinosa</i>	<i>P. cynaroides</i>	<i>ncpGS</i>	0.00247587	0.00120958	0.00741697
<i>Protea</i>	<i>P. scolopendriifolia</i>	<i>P. pruinosa</i>	<i>P. cynaroides</i>	<i>trnL-F</i>	0	0	0.00981232
<i>Protea</i>	<i>P. speciosa</i>	<i>P. stokoei</i>	<i>P. scabra</i>	<i>atpB-rbcL</i>	0	0	0.00351668
<i>Protea</i>	<i>P. speciosa</i>	<i>P. stokoei</i>	<i>P. scabra</i>	<i>rpS16</i>	0.00253174	0	0
<i>Protea</i>	<i>P. speciosa</i>	<i>P. stokoei</i>	<i>P. scabra</i>	<i>trnL</i>	0	0	0
<i>Protea</i>	<i>P. speciosa</i>	<i>P. stokoei</i>	<i>P. scabra</i>	<i>ncpGS</i>	0	0	0.00482575
<i>Protea</i>	<i>P. speciosa</i>	<i>P. stokoei</i>	<i>P. scabra</i>	<i>trnL-F</i>	0	0	0.00246267
<i>Pultenaea</i>	<i>P. myrtoides</i>	<i>P. glabra</i>	<i>Chorizema aciculare</i>	<i>ITS</i>	0.0605617	0.0361958	0.0474714
<i>Pultenaea</i>	<i>P. myrtoides</i>	<i>P. glabra</i>	<i>Chorizema aciculare</i>	<i>ndhF</i>	15.1795	9.15954	6.10739
<i>Pultenaea</i>	<i>P. myrtoides</i>	<i>P. glabra</i>	<i>Chorizema aciculare</i>	<i>trnL-F</i>	0.0203827	0.0287971	0.0423569
<i>Thamnochortus</i>	<i>T. cinereus</i>	<i>T. rigidus</i>	<i>T. glaber</i>	<i>atpB-rbcL</i>	19.5547	16.2473	37.3378
<i>Thamnochortus</i>	<i>T. cinereus</i>	<i>T. rigidus</i>	<i>T. glaber</i>	<i>matK</i>	0	0	0.000912426
<i>Thamnochortus</i>	<i>T. cinereus</i>	<i>T. rigidus</i>	<i>T. glaber</i>	<i>trnL-F</i>	0.0010094	0	0.0060924
<i>Thamnochortus</i>	<i>T. erectus</i>	<i>T. Insignis</i>	<i>T. guthrieae</i>	<i>atpB-rbcL</i>	9.89617	24.348	24.121
<i>Thamnochortus</i>	<i>T. erectus</i>	<i>T. Insignis</i>	<i>T. guthrieae</i>	<i>matK</i>	0	0.000822813	0.00207302
<i>Thamnochortus</i>	<i>T. erectus</i>	<i>T. Insignis</i>	<i>T. guthrieae</i>	<i>trnL-F</i>	0	0.0020636	0.0020643
<i>Thamnochortus</i>	<i>T. lucens</i>	<i>T. dumosus</i>	<i>T. pellucidus</i>	<i>atpB-rbcL</i>	25.8339	25.8998	6.17736
<i>Thamnochortus</i>	<i>T. lucens</i>	<i>T. dumosus</i>	<i>T. pellucidus</i>	<i>matK</i>	0.000858476	0	0.00128725
<i>Thamnochortus</i>	<i>T. lucens</i>	<i>T. dumosus</i>	<i>T. pellucidus</i>	<i>trnL-F</i>	0	0	0.0009783
<i>Thamnochortus</i>	<i>T. sporadicus</i>	<i>T. punctatus</i>	<i>T. platypteris</i>	<i>atpB-rbcL</i>	0.000482794	0	0.00288439
<i>Thamnochortus</i>	<i>T. sporadicus</i>	<i>T. punctatus</i>	<i>T. platypteris</i>	<i>matK</i>	19.7384	19.6628	0.456128
<i>Thamnochortus</i>	<i>T. sporadicus</i>	<i>T. punctatus</i>	<i>T. platypteris</i>	<i>trnL-F</i>	37.4306	10.2045	38.6072
<i>Thamnochortus</i>	<i>T. spicigerus</i>	<i>T. fraternus</i>	<i>T. pluristachyus</i>	<i>atpB-rbcL</i>	0.000473537	0	0
<i>Thamnochortus</i>	<i>T. spicigerus</i>	<i>T. fraternus</i>	<i>T. pluristachyus</i>	<i>matK</i>	12.8015	9.75333	1.83447
<i>Thamnochortus</i>	<i>T. spicigerus</i>	<i>T. fraternus</i>	<i>T. pluristachyus</i>	<i>trnL-F</i>	0	0	0.003022
<i>Ulex</i>	<i>U. europaeus</i>	<i>U. parviflorus</i>	<i>Calicotome spinosa</i>	<i>ITS</i>	0.0068023	0.0016361	0.087685
<i>Ulex</i>	<i>U. europaeus</i>	<i>U. parviflorus</i>	<i>Calicotome spinosa</i>	<i>trnL-F</i>	0.00418686	0.000655652	0.0395952

## Appendix S2

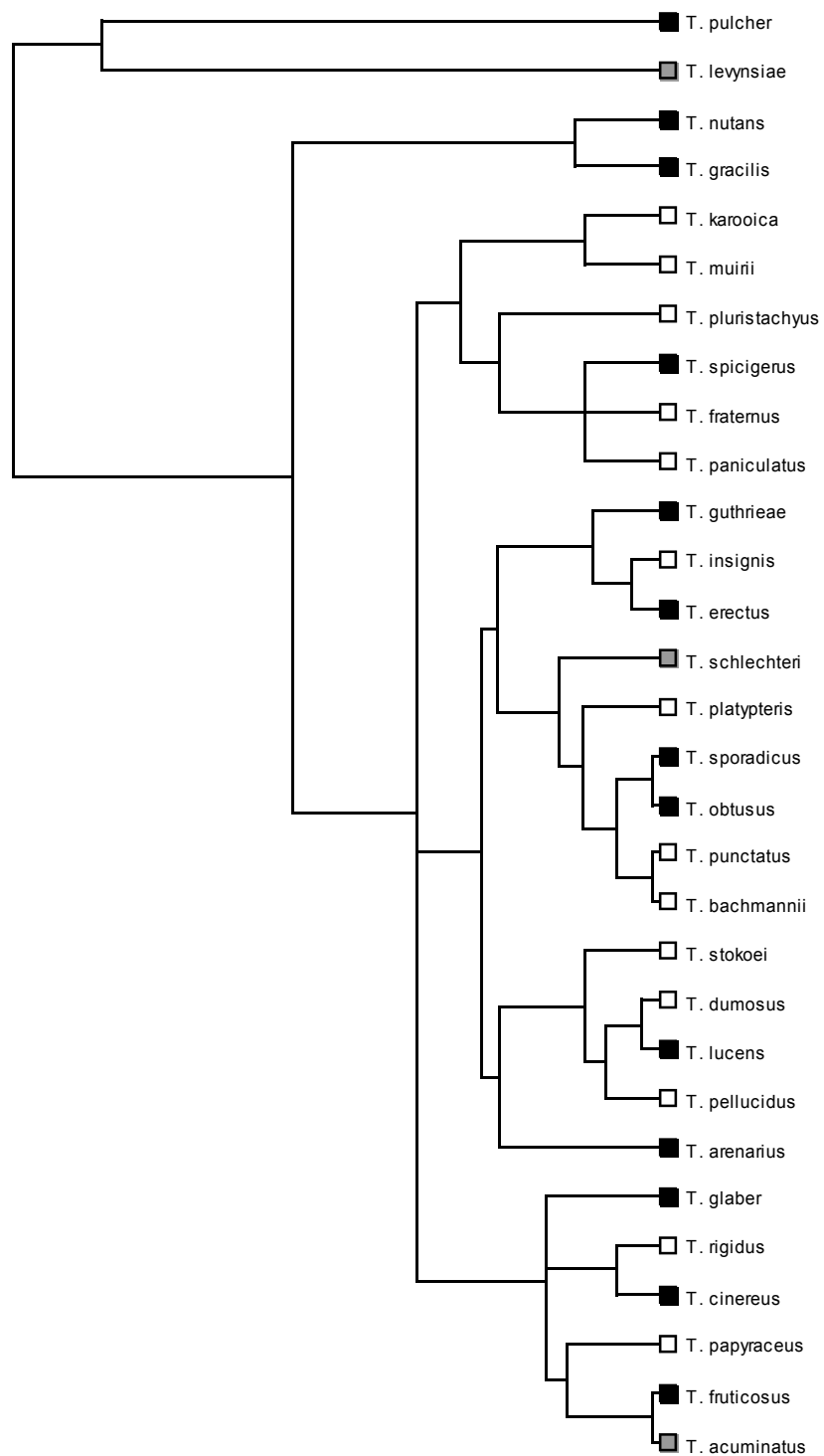
Consensus trees for the phylogeny of the five genera used to study diversification (*Banksia*, *Daviesia*, *Lachnaea*, *Thamnochortus*, *Leucadendron*). Trees include species names and post-fire life history strategy (Black symbols: species with post-fire resprouting capacity; White symbols: species that have no resprouting capacity and that rely on seeds for post-fire persistence; Grey symbols: species with both resprouting and non-resprouting populations or species with uncertainty in their resprouting behaviour). These consensus trees were recovered in a Bayesian framework based on the GenBank data and applying a non-parametric rate smoothing algorithm (see main text for details).



*Daviesia* consensus tree based on ITS sequences. Genetic data and post-fire life history strategy from Crisp et al. 2003.



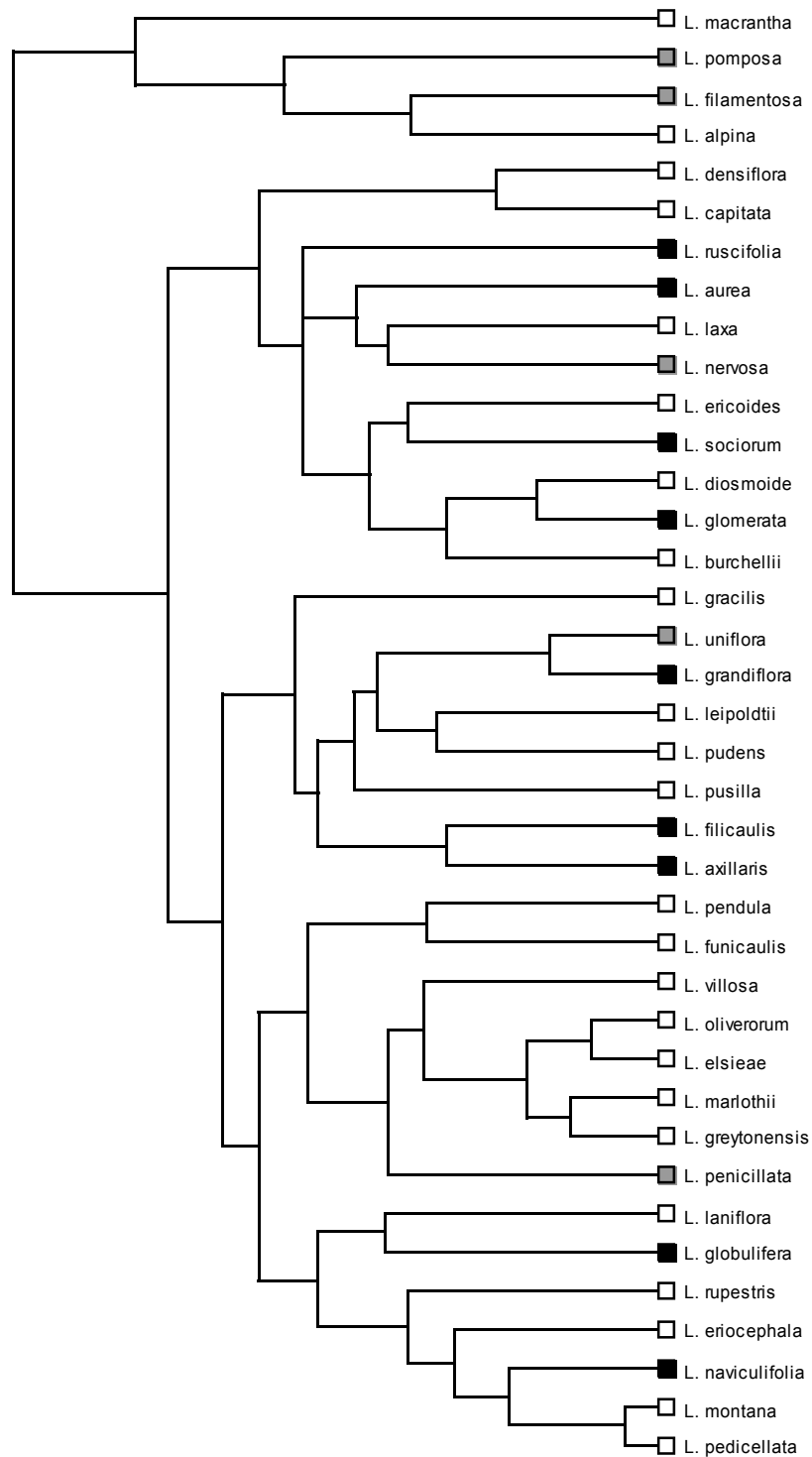
*Leucadendron* consensus tree based on ITS sequences. Genetic data and post-fire life history strategy from Barker et al. (2004).



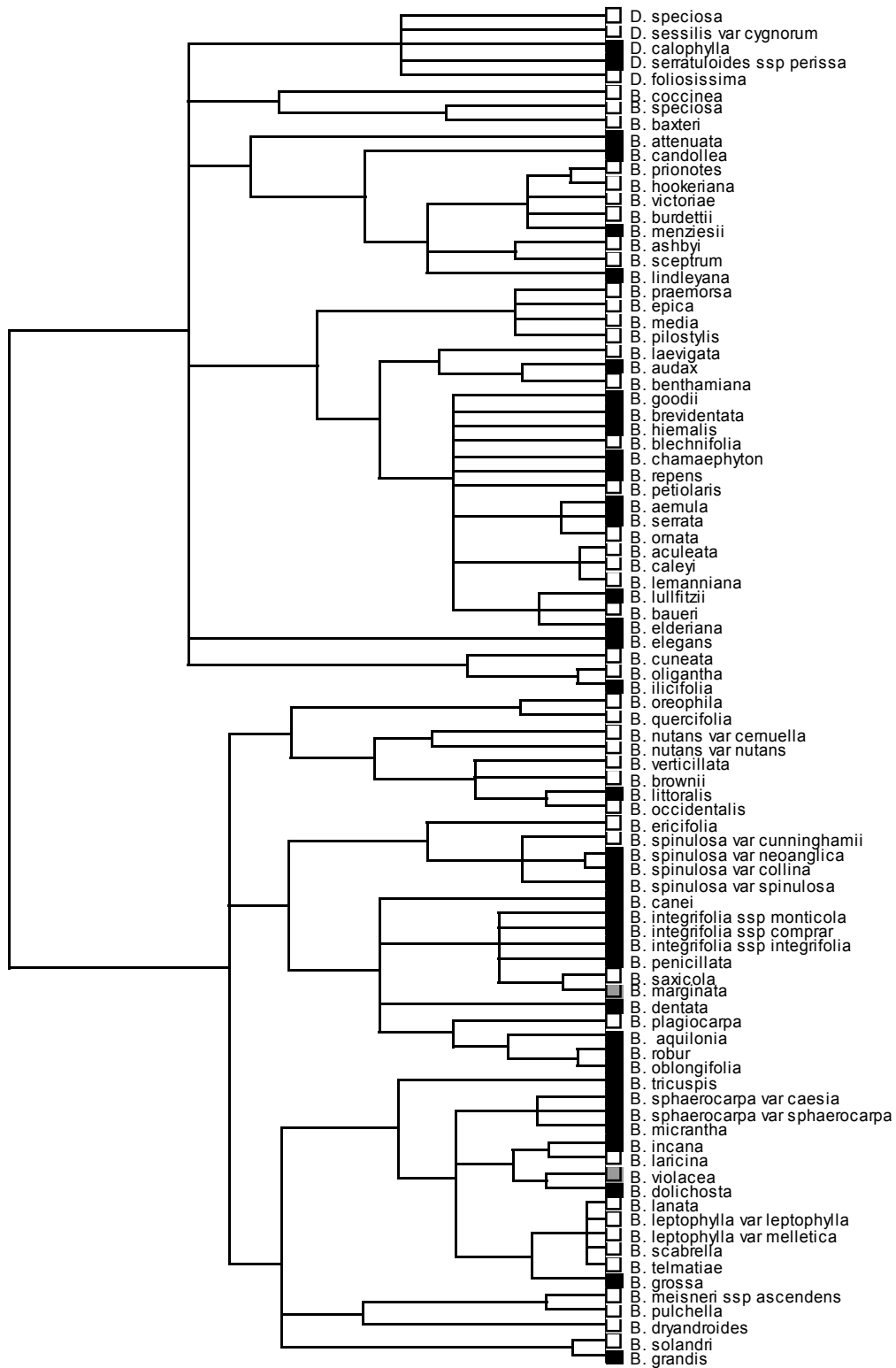
*Thamnochortus* consensus tree based on *trnK/matK*, *atpB-rbcL* and *trnL-F* sequences .

Genetic data and post-fire life history strategy from Hardy & Linder (2005).





*Lachnaea* consensus tree based on ITS, *rbcL*, *trnL-F*, *rpS16* sequence data. Genetic data and post-fire life history strategy from Beyers (2001) and Robinson (2005).



*Banksia* (including some *Dryandra* species) consensus tree based on *rpL16* and *psbA-trnH* sequences. Genetic data from Mast & Givinish 2002 and post-fire life history strategy from George (1996) and Bond & Midgley (2003).