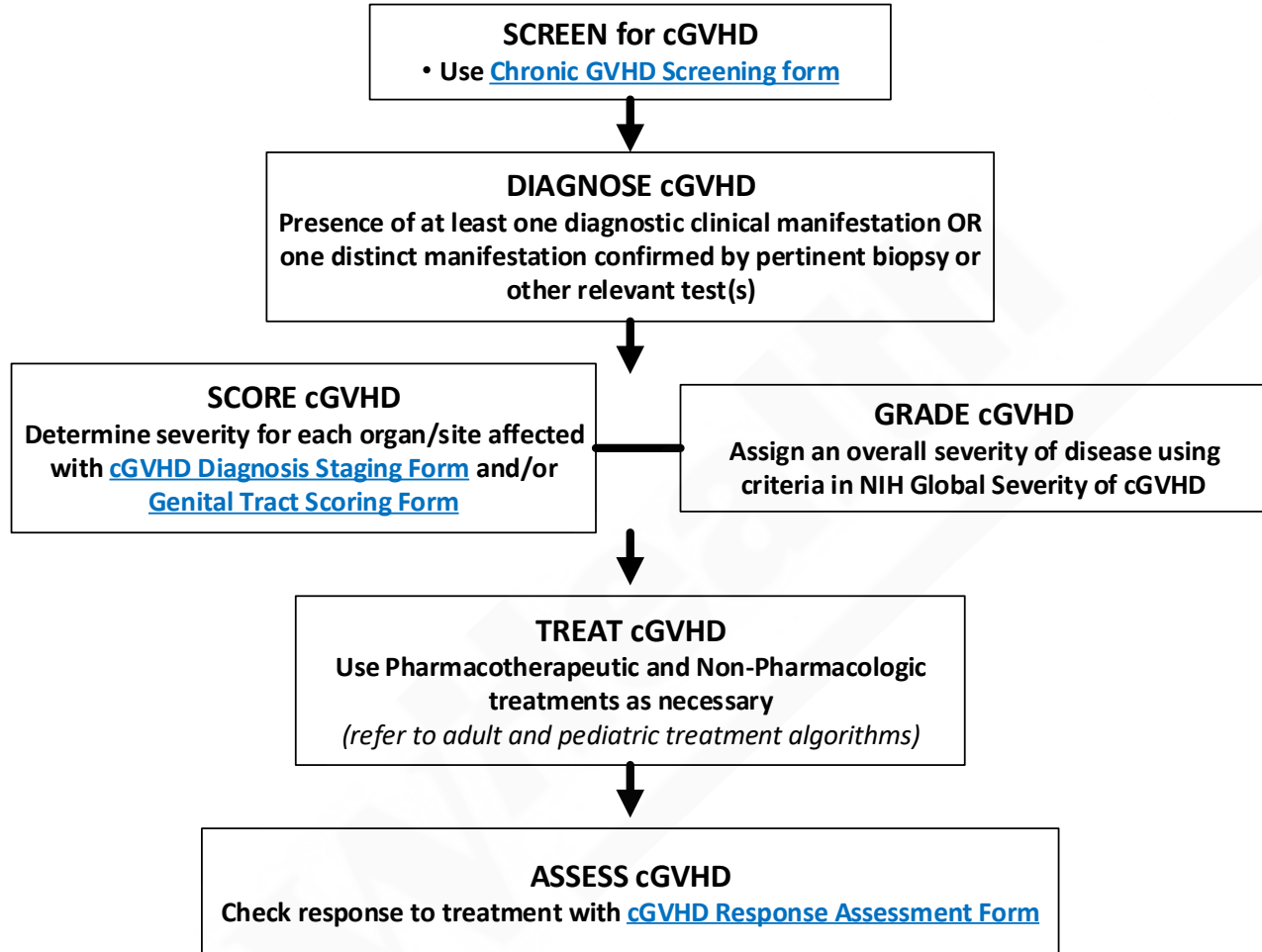


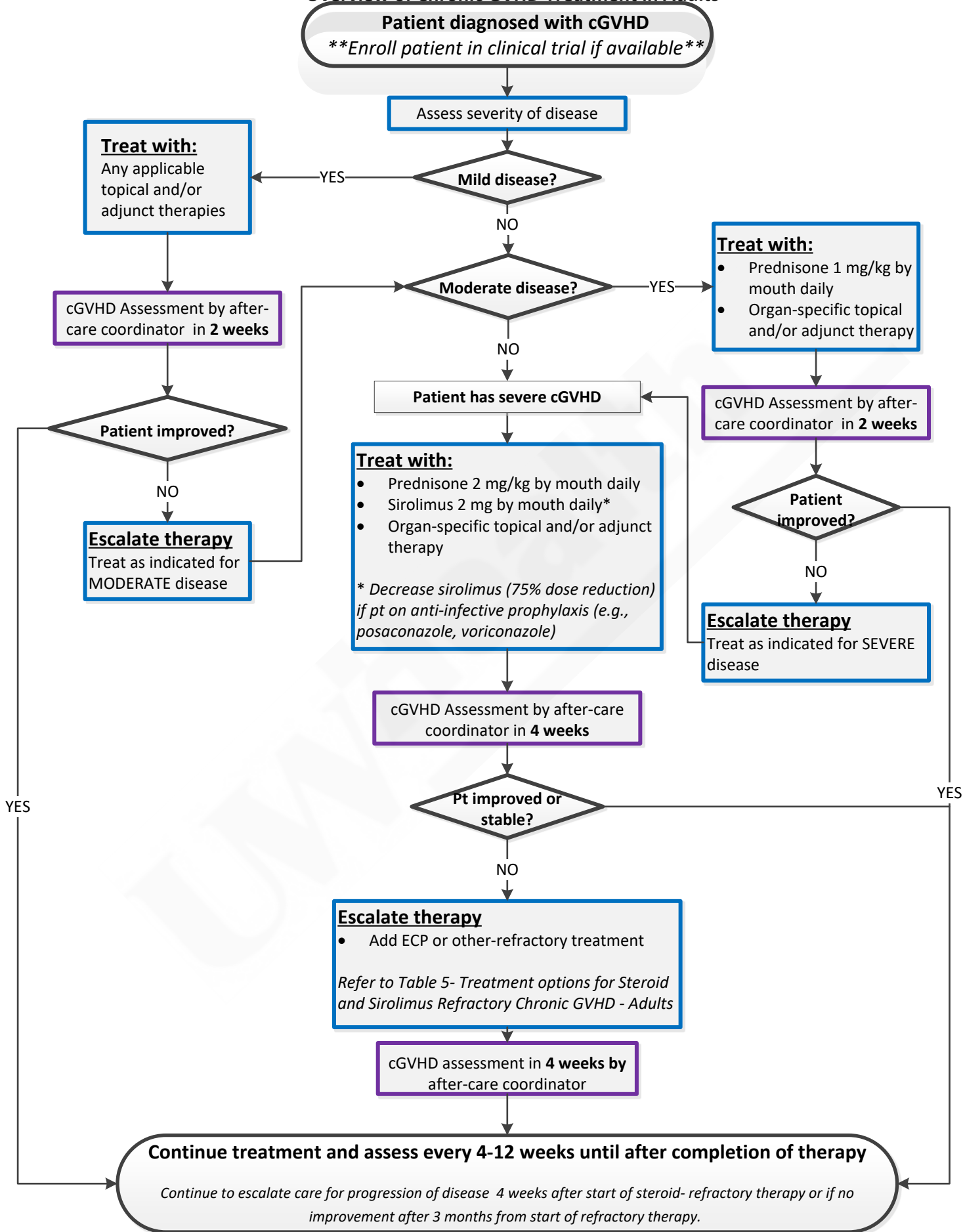
UWHealth	Chronic Graft Versus Host Disease: Diagnosis and Treatment—Adult/Pediatric- Inpatient/Ambulatory - Guideline Summary
Target Population: Any patient (adult or pediatric) who has received an allogeneic hematopoietic stem cell transplant and is being seen in the BMT clinic or inpatient setting	
Full Guideline: Chronic Graft Versus Host Disease: Diagnosis and Treatment—Adult/Pediatric	

Overview of Chronic Graft versus Host Disease



NIH Global Severity of cGVHD
Mild cGVHD
1 or 2 organs involved with no more than score 1 PLUS Lung score 0
Moderate cGVHD
3 or more organs involved with no more than score 1
OR
At least 1 organ (not lung) with a score of 2
OR
Lung score 1
Severe cGVHD
At least 1 organ with a score of 3
OR
Lung score of 2 or 3
Key points:
In skin: higher of the 2 scores to be used for calculating global severity.
In lung: FEV1 is used instead of clinical score for calculating global severity.
<ul style="list-style-type: none"> • If the entire abnormality in an organ is noted to be unequivocally explained by a non-GVHD documented cause, that organ is not included for calculation of the global severity. • If the abnormality in an organ is attributed to multifactorial causes (GVHD plus other causes) the scored organ will be used for calculation of the global severity regardless of the contributing causes (no downgrading of organ severity score).

Overview of Chronic GVHD Treatment in Adults



Overview of Chronic GVHD Treatment in Pediatrics

