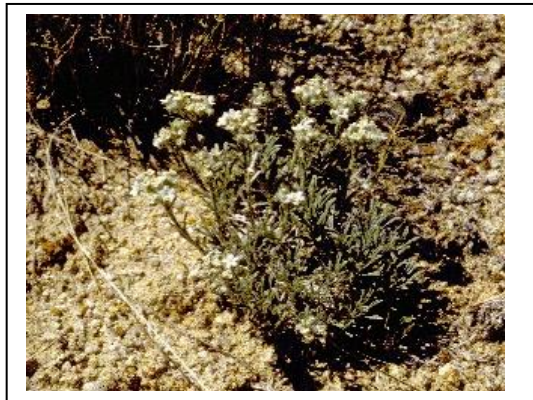


Appendix *Cryptantha subcapitata*

*Cryptantha subcapitata* photos of 1980s and 1990s



By Robert Dorn



By Walter Fertig



By Charmaine Delmatier

Appendix *Cryptantha subcapitata*

*Cryptantha subcapitata* photos of 2019-2020



This was the only healthy, full-stature plant observed in 2019 or 2020, photographed in 2019 in Boysen State Park. Note that small plants of both cheatgrass and desert madwort are in this photo.



There were only three other plants observed in flower in 2019-2020. This was photographed in 2019 at Cedar Ridge. It had the highest number of flowering stems observed in 2019-2020 though height was stunted.



This was one of seven plants in fruit, observed in 2020 above the Boysen Dam

Appendix *Cryptantha subcapitata*



The majority of plants observed in 2019-2020 had dead rosettes within each mat



Only one plant was observed that appeared to be completely dead



Most plants were 5-15 cm across, but a few large plants approaching 30 cm diameter were observed at Cedar Ridge

Appendix *Cryptantha subcapitata*

*Cryptantha subcapitata* habitat photos



Habitat photo west of Birdseye Road by Walter Fertig



Habitat photo west of Birdseye Road (foreground) showing unoccupied sedimentary ridges in the direction of reservoir



The ridgetops of Cedar Ridge have interrupted barren places of occupied habitat (foreground, and far ridge at skyline)



Cedar Ridge tapers in elevation and substrate suitability to east (three whitish areas)

Appendix *Cryptantha subcapitata*



The type locality is on a gravelly ridge above Boysen Dam (foreground)



The type locality is the northernmost and highest elevation locality (see arrow). The access road appears below it.



*Cryptantha subcapitata* is concentrated along the north rim of the type locality (view looking east)



The gravelly pavement of the type locality includes calcareous material, differing in this way from other occupied habitat locations surveyed in 2019-2020

Appendix *Cryptantha subcapitata*



Railroad right-of-way was documented as a new location in Boysen State Park, in vicinity of habitat that had been lost to recreational development



*Cryptantha subcapitata* habitat includes gentle toeslopes capped by colluvium, as in this corridor besides the highway.



Habitat on the western side of the reservoir, midway along its length, includes one place where the species borders the reservoir. Halogeton is present along the shoreline.

Appendix *Cryptantha subcapitata*

*Cryptantha subcapitata* photos of potential threats



It did not appear that *Cryptantha subcapitata* was being crowded out by competing vegetation. The only cases of other species growing in proximity seemed to be rare cases of them establishing in *Cryptantha* mats that were dying, such as this rice grass within *Cryptantha*.



A small knoll of occupied habitat is at the Boysen State Park entrance (arrow). Note: This is the same location where the one healthy plant was photographed. The rest of uplands in the center below the highway were mapped as occupied habitat from 1980s surveys, and could have been either mismapped or destroyed.



This Park entry sign is directly in front of a small knoll with occupied habitat. Note cheatgrass in the foreground. This is the same knoll as in the preceding photo.

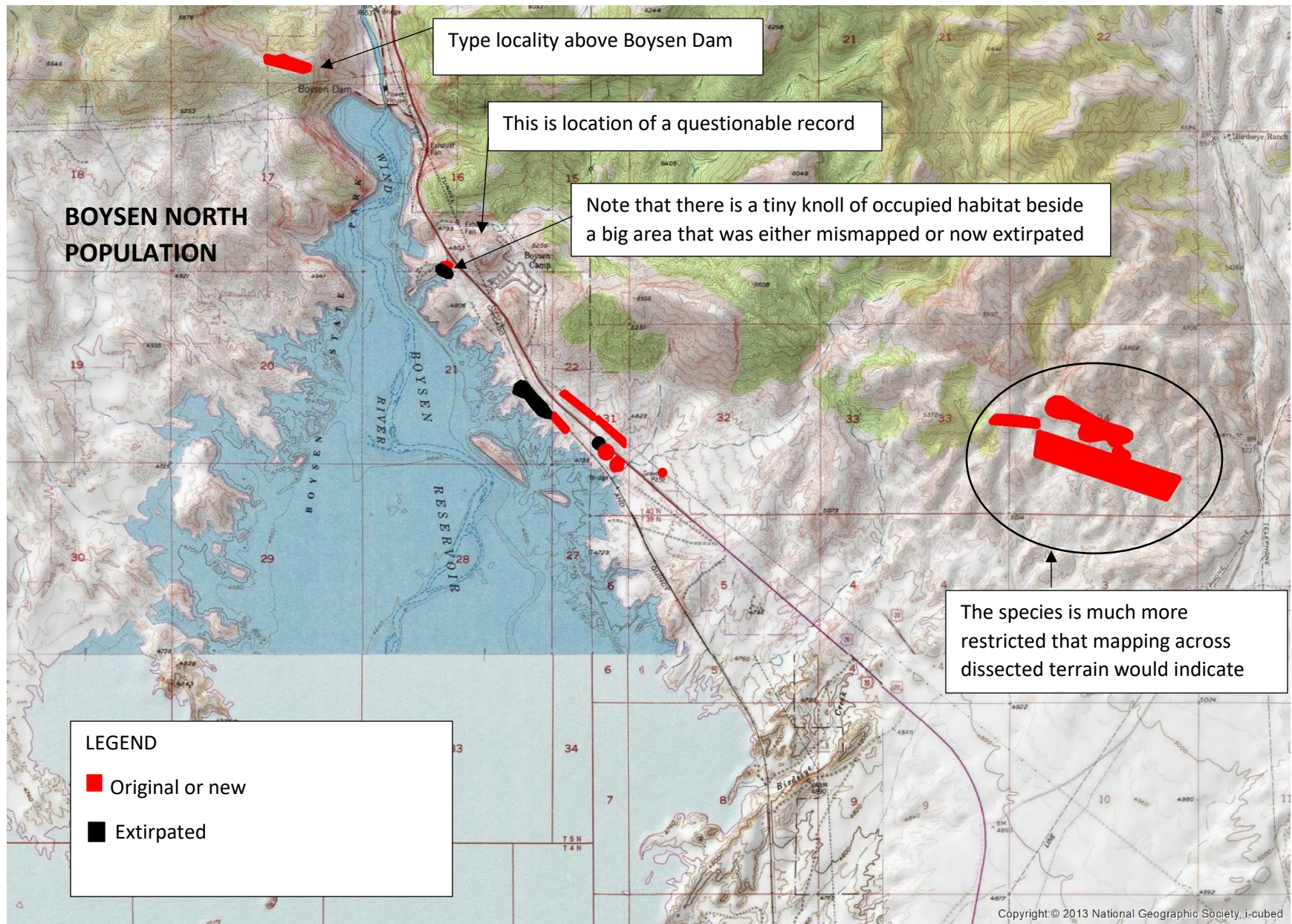
Appendix *Cryptantha subcapitata*



Occasionally plants showed signs of pedestalling, as though being eroded out







Appendix *Cryptantha subcapitata*

