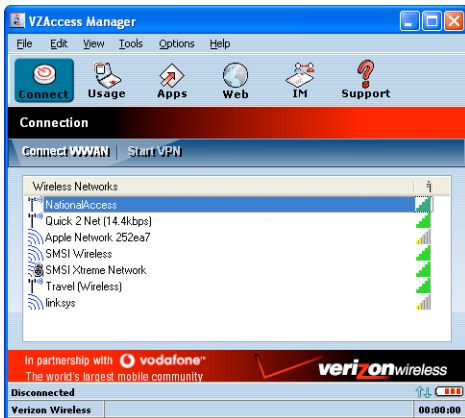




VERIZON WIRELESS VZACCESS MANAGER QUICK START GUIDE FOR PC CARDS

WELCOME

Congratulations on purchasing VZAccess Manager – the most popular data connectivity solution for wireless Internet access. This Quick Start Guide will provide information needed to get started with VZAccess Manager. Please also consult the User's Guide for detailed information on the setup and use of VZAccess Manager.



VZAccess Manager works with your notebook computer and data PC Card to provide wireless Internet connectivity through your network. VZAccess Manager can also be used optionally to connect to Wi-Fi networks when available.

▶ SYSTEM REQUIREMENTS

In order to set up VZAccess Manager, you will need the following **minimum** system requirements:

- Microsoft Windows 98 (Second Edition), Windows Millennium Edition (ME), Windows 2000 Professional, or Windows XP (Home, Professional or Tablet)
- Pentium 166 MHz or higher
- Verizon Wireless PC Card
- Optional Wi-Fi adapter for Wi-Fi access.
- Internet browser software for Internet access or the software used by your company for network access.
- Verizon Wireless wireless data service

▶ SETUP INSTRUCTIONS



Important: VZAccess Manager software must be installed before you insert the PC Card in to the computer for the first time. Only after the software has been installed can Windows successfully install and configure the PC Card.

After inserting the CD, the CD front-end will run and present you will several options. At this point you can proceed with the VZAccess Manager setup or exit the setup process.

To begin installation of VZAccess Manager drag the cursor over “Proceed with VZAccess Manager Setup” and click once to select it. Setting up VZAccess Manager takes just a few minutes. It consists of the following steps:

Step 1: Install VZAccess Manager

Step 2: Run the VZAccess Manager Setup Wizard.

Step 3: Configure your wireless device by following the screen prompts on the Install Modem Wizard.

Step 4: Test your wireless modem to verify it is working properly.

That’s it! Once set up is completed, you can connect to the Internet immediately.

▶ STEP 1: INSTALL VZACCESS MANAGER

1. Turn on your computer and close all applications.
2. Insert the CD-ROM into your CD drive.
3. If set up does not automatically start, click the **Start** button on the taskbar and choose **Run**. Type **D:\Start** (where D is the letter of your CD-ROM drive) and click **OK**.
4. Choose the **Install VZAccess Manager** option to begin the installation process. The VZAccess Manager installation program will open. Click **Next** on the opening screen.
5. A License Agreement dialog will appear. Click **I agree...** followed by **Next** to continue.

6. It is recommended to leave the default path as is. If you wish to change it, press **Browse...**, otherwise press **Next** to continue.
7. Click **Next** to start the install process.

After the files are copied to your computer, the Installation Complete dialog will appear. Leave the check box labeled **Run VZAccess Manager** checked and press **Finish**.

▶ **STEP 2: RUN THE VZACCESS MANAGER SETUP WIZARD**

Click the Start button and navigate to the VZAccess Manager menu item to start the VZAccess Manager program.

On first-run of VZAccess Manager the Setup Wizard will automatically run. Below is an overview of the steps of the Setup Wizard:

- **Welcome:** Click **Next** to continue.
- **Wi-Fi/WWAN Detection:** The setup wizard will first detect any available Wi-Fi adapters on your PC and then your Verizon Wireless PC Card. Select WWAN device only if you do not have a Wi-Fi adapter configured on your PC or want to skip the Wi-Fi detection.
- **Connectivity Options** After Wi-Fi/WWAN detection, you will need to choose the connectivity option you wish to use with your Verizon Wireless device. Select “**PC Card**”, then click **Next** to continue.
- **Find Wireless Device:** VZAccess Manager will now find your wireless device. Insert the card into your PC Card slot now. If this is the first time

you have plugged in the PC Card, Windows will now install the drivers for this device. This may take a few minutes.

▶ **STEP 3: INSTALL YOUR DEVICE**

In certain cases you may be asked to restart your computer in which case press the Restart button on the Wizard. Otherwise press the **Next** button to continue.

▶ **STEP 4: TEST YOUR WIRELESS DEVICE**

1. Your options include:
 - Click **Test Device** on the VZAccess Manager - Test Device dialog box. The Test Results pop-up window displays.
 - Click **Retest** as needed to repeat the test.
 - Click **OK** to conclude the test. The VZAccess Manager Finished dialog box displays.
2. **Finish button:** Click to finish and exit the setup wizard

▶ **CONNECTING TO THE INTERNET**

To connect to the Internet:

1. Insert the card in to your computer's PC Card slot.
2. Launch VZAccess Manager (if not already running) by double clicking the **VZAccess Manager** icon on your desktop. The VZAccess Manager application window displays.

3. Select one of the following connections: "**NationalAccess**", "**NationalAccess - BroadbandAccess**", or "**Quick 2 Net (14.4kbps)**".
4. Click the "**Connect WWAN**" button when it becomes enabled.

At this point you can launch your web browser and connect to any public web site. Please consult the section "*Connecting to the Internet*" in the User's Guide for detailed information on the features of the VZAccess Manager product.

▶ TECHNICAL SUPPORT ASSISTANCE

- Help is available via VZAccess Manager's on-screen help, simply click the "**Help**" menu, then select "**Contents**".
- You can also access help by clicking the **Support** button in the VZAccess Manager button bar.
- In addition you may e-mail your question to:
vzaccessmanager@smithmicro.com

For the latest information on Verizon Wireless and VZAccess Manager go to www.verizonwireless.com.

LEGAL DISCLAIMERS:

Verizon Wireless is a trademark of Verizon Trademark Services LLC, and the other trademarks, logos, and service marks (collectively the "Trademarks") used in this help file are the property of Verizon Wireless or their respective owners. Nothing contained in this help file should be construed as granting by implication or otherwise, a license or right of use of Verizon Wireless or any other Trademark displayed in this help file without the written permission of Verizon Wireless or its respective owner.

VZAccess is a service mark of Verizon Wireless

Quick 2 Net is a service mark of Verizon Wireless.

The names of actual companies and products mentioned in this help file may be the trademarks of their respective owners.

Contents of this help file, Copyright 2004 Verizon Wireless, all rights reserved.
Rev CAK6.10.04.