



# Vertiv™ Knürr™ Rack Accessories Catalogue

## Vertiv

Vertiv designs, builds and services mission critical technologies that enable the vital applications for data centers, communication networks, and commercial and industrial environments. We support today's growing mobile and cloud computing markets with our portfolio of power, thermal, infrastructure management products, software and solutions, all complemented by our global service network. Bringing together global reach and local knowledge, and our decades-long heritage including brands like Chloride®, Liebert® and NetSure™, our team of experts is ready to take on your most complex challenges, creating solutions that keep your systems running — and your business moving. Together, we're building the future of a world where critical technologies always work.

*Your vision, Our passion.*

**Vertiv.com**



## Table of Contents

### Rack Accessories and Components

---



[Page](#)      [4](#)      [Vertiv™ Knürr™ System Accessories](#)



[Page](#)      [34](#)      [Vertiv™ Knürr™ Cable Management](#)



[Page](#)      [67](#)      [Vertiv™ Knürr™ Fan Units](#)

### Security and Monitoring

---



[Page](#)      [80](#)      [Vertiv™ Knürr™ Locking Systems](#)



[Page](#)      [86](#)      [Vertiv™ Knürr™ RMSIII](#)

---

## Features

### Blanking panels

- Design identical to racks.
- Tool-less, threaded version available.
- Varying sizes for quick mounting and efficient cooling.

### Chassis rails

- Various designs catering to different requirements.
- Height positioning for different corpus heights of the subracks possible (not defined according to 19" standard).

### Drawers and shelves

- Various designs catering to different loads.
- Shelves with tool-less mounting available.

## Vertiv™ Knürr™ System Accessories

**Mechanical accessories are fundamental to effective and economical use of server- and network racks.**

Blanking panels are an essential feature in operating an energy-efficient data center, as they ensure that cold and warm air in the rack are separated.

When there are no mounting adapters for IT components, chassis rails and shelves are required.

Drawers are used to store manuals, spare parts and tools needed on site.







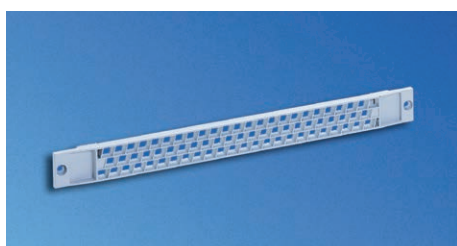
MEC20179



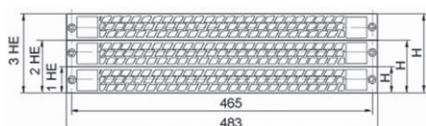
MEC20180



MEC20178



LUF88006



LUF00093

## QuickFix 19" blanking panel, Tool-less assembly

- For covering free 19" spaces (cold-hot separation).
- Quick and easy tool-less assembly (one click) and disassembly (quarter turn).
- Suitable for 9.5 x 9.5 square holes.

- **Material**

- Sheet steel, 1.0 mm.

- **Finish**

- Final digit of order number .1: powder-coated texture, RAL 7035, light-grey.

- Final digit of order number .8: powder-coated texture, RAL 7021 dark-grey.

- **Scope of delivery**

- X (see Order Number for quantity) QuickFix 19" blanking panel.
- Mounting kit.

- **How supplied**

- In sets (see Order Number for quantity); fixing clips re-assembled.

W	H	U	Order No.	UP
482.6	43.6	1	01.103.301.X	6 units
482.6	88.1	2	01.103.302.X	3 units
482.6	132.5	3	01.103.303.X	2 units
482.6	265.9	6	01.103.306.X	1 unit
482.6	399.2	9	01.103.309.X	2 units
482.6	932.6	21	01.103.321.X	1 unit

## 19" vented front cover plate

- Provides additional ventilation for 19" racks and 19" plinths compliant with IEC 297.

- **Material / Color**

- Final digit of order number .1: ABS (UL 94 V0), light-grey RAL 7035.
- Final digit of order number .9: ABS (UL 94 V0), black RAL 9011.

- **Scope of delivery**

- 1 x vented front cover plate.
- 2 x connectors.

- **How supplied**

- In sets.

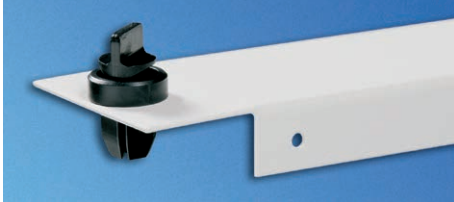
- **Note**

- Please also order the appropriate mounting kit for the front plates.

W	H	U	Order No.	UP
483	43.6	1	02.008.111.1	1 unit
483	43.6	1	02.008.111.9	1 unit



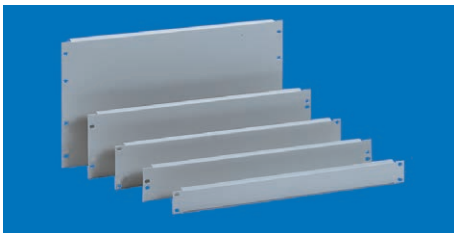
MEC20181



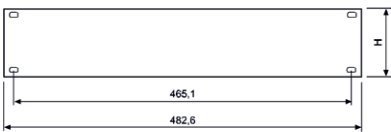
MEC20178



MEC20229



CUD00005



CUD00004

## 19" QuickFix blanking panel with cable entry, tool-less assembly

- For orderly cable entry inside the Rack
- Cable entry is covered with brush strip
- Quick and tool-less assembly (one click) and disassembly (quarter turn)
- Suitable for 9.5 x 9.5 square holes

### Material

- Sheet steel, 1.0 mm.

### Finish

- Final digit of order number .1: powder-coated texture, RAL 7035, light-grey.

- Final digit of order number .8: powder-coated texture, RAL 7021 dark-grey.

### Scope of delivery

- 6 x QuickFix 19" blanking panel with cable entry and brush strip.

- 1 Mounting kit.

### How supplied

- In sets (clips pre-assembled).

W	H	U	Order No.	UP
482.6	43.6	1	01.103.331.X	6 units

## 19" blanking plate Screw-on

- For covering free 19" spaces (cold-hot separation).

### Material

- Sheet steel, 1.0 mm.

### Finish

- Final digit of order number .1: powder-coated texture, RAL 7035, light-grey.
- Final digit of order number .8: powder-coated texture, RAL 7021 dark-grey.

### Scope of delivery

- X (see Order Number for quantity) 19" blanking panel.

### How supplied

- In sets (see ON for quantity).

### Note

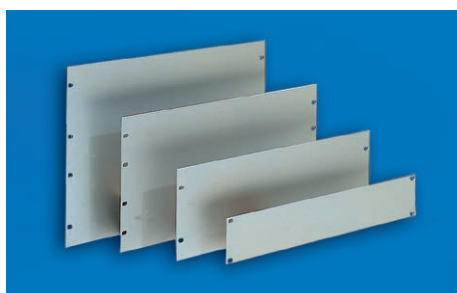
- Please also order front panel mounting material.

W	H	U	Order No.	UP
482.6	43.6	1	01.103.201.X	6 units
482.6	88.1	2	01.103.202.1	3 units
482.6	88.1	2	01.103.202.8	3 units
482.6	132.5	3	01.103.203.X	2 units
482.6	265.9	6	01.103.206.X	1 unit
482.6	399.2	9	01.103.209.X	2 units

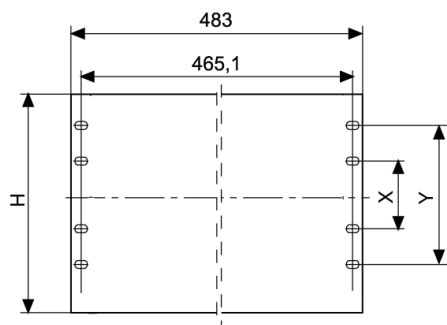
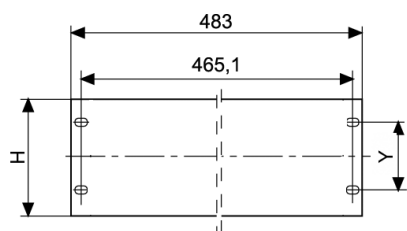
### Dimensions in mm:

W = Width	h = Installation height	U = Standard rack unit	kg = Weight	1 mm = 0.03937 inch
H = Height	d = Insertion depth	(1 U = 44.45 mm)		1 kg = 2.2046 pounds
D = Depth	L = Length	UP = Packaging unit		

### Conversion:



FR000005



MEC20109

## 19" front plate Aluminum 3 mm

- Material / Finish**

- Final digit of order number .0: AlMg3 - F23 polished with lamination sheet.
- Final digit of order number .1: AlMg3 - F23, powder-coated, RAL 7035, light-grey.
- Final digit of order number .6: AlMg3 - F23 EB (anodize-enabled), anodized E6/EV1.
- Final digit of order number .8: AlMg3 - F23, powder-coated, RAL 7021, dark-grey.

- Scope of delivery**

- 1 x 19" front plate.

- How supplied**

- Single items.

- Note**

Please also order the appropriate mounting kit for the front plates.

H	X	Y	U	Model	Order No.	UP
43.6		31.7	1	Polished	02.008.021.0	1 unit
43.6		31.7	1	Powder-coated, RAL 7035	02.008.021.1	1 unit
88.1		76.2	2	Powder-coated, RAL 7035	02.008.022.1	1 unit
132.5		57.1	3	Powder-coated, RAL 7035	02.008.023.1	1 unit
177.0		101.6	4	Powder-coated, RAL 7035	02.008.024.1	1 unit
265.9	76.2	190.4	6	Powder-coated, RAL 7035	02.008.026.1	1 unit
43.6		31.7	1	Powder-coated, RAL 7021	02.008.021.8	1 unit
43.6		31.7	1	Anodized	02.008.071.6	1 unit
88.1		76.2	2	Anodized	02.008.072.6	1 unit
132.5		57.1	3	Anodized	02.008.073.6	1 unit
177.0		101.6	4	Anodized	02.008.074.6	1 unit
265.9	76.2	190.4	6	Anodized	02.008.076.6	1 unit



MEC20144



MEC20149

## Cover-plate filter for 19" vented front cover plate

- Used with 19" vented front cover plate.

- Material / Color**

- Non-woven and screen cloth.

- Scope of delivery**

- 1 x cover-plate filter.
- 1 x Mounting kit.

- How supplied**

- In sets.

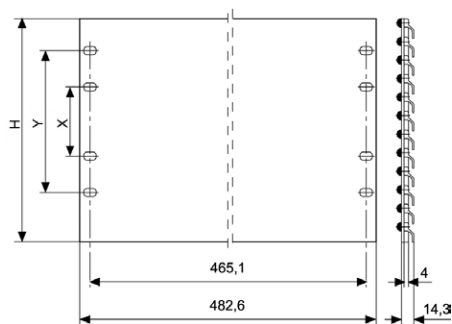
- Note**

- Appropriate for 02.008.111.X

U	Order No.	UP
1	02.008.131.9	1 unit



LUF00217



MEC20110

## 19" ventilation front panel

- Provides additional ventilation for 19" racks and 19" plinths compliant with IEC 297.

- **Material**
  - Aluminum.
- **Finish**
  - Final digit of order number .1: powder-coated, RAL 7035 light-grey.

- Final digit of order number .6: colorless anodized E 6 / EV 1.

- **Scope of delivery**

- 1 x ventilation front plate.

- **How supplied**

- Single items.

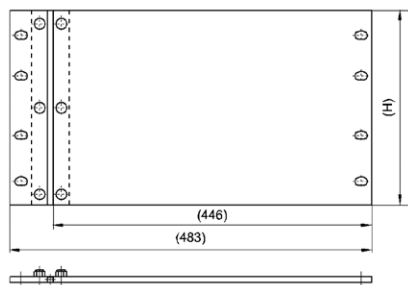
- **Note**

Please also order the appropriate mounting kit for the front plates.

H	Y	U	Model	Order No.	UP
43.6	31.7	1	Powder-coated. RAL 7035	<b>02.008.101.1</b>	1 unit
43.6	31.7	1	Anodized	<b>02.008.101.6</b>	1 unit
132.5	57.1	3	Powder-coated. RAL 7035	<b>02.008.103.1</b>	1 unit
132.5	57.1	3	Anodized	<b>02.008.103.6</b>	1 unit



FRO00007



FRO00006

## 19" front plate hinged

- With 19" adapter and hinge.

- **Material**
  - Aluminum, 3 mm.
- **Finish**
  - Anodized.
- **Scope of delivery**
  - 1 x front plate, hinged.
  - 1 x 19" adapter.
  - 1 x hinge.

- **How supplied**

- In sets.

- **Note**

Please also order the appropriate mounting kit for the front plates.

U	Model	Order No.	UP
3	Anodized	<b>01.110.780.6</b>	1 unit
6	Anodized	<b>01.110.781.6</b>	1 unit

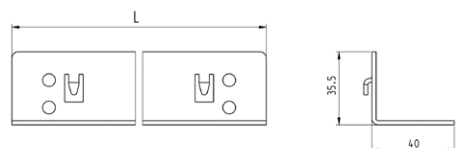




MEC20162



MEC20167



MEC20167

## Chassis runner

### Can be hooked on and screwed on

- For installation in 19" rack and 19" enclosure.
- Can be hooked on for quick and easy mounting.
- Can also be attached with screws to accommodate heavier loads.
- Can be screwed from inside (used in rack suites).
- Adjustable height to suit various main-section heights.

#### Material / Finish

- Sheet steel, 2.0 mm.
- Zinc-passivated, blue chrome-plated.

#### Load rating

- 1000 N max. with even load distribution.

#### Scope of delivery

- 2 x chassis runners.
- 1 x Mounting kit.

#### How supplied

- In pairs.

#### Note

When selecting the chassis runner, please take into account the depth "d" of the rack or enclosure. Four 19" extrusions are required for mounting.

Mounting adapter for 19" server extrusions 01.147.640.9 1 Set.

Mounting adapter for Smaract™ 19" server extrusions 01.127.119.9 1 Set.

D <sub>Rack</sub>	d	L	For rack type	Order No.	UP
600	365	336	MIR2 / DCM / Smaract™	01.103.051.0	1 pair
600	440	411	MIR2 / DCM / Smaract™	01.103.052.0	1 pair
800	565	536	MIR2 / DCM / Smaract™	01.103.053.0	1 pair
800	640	611	MIR2 / DCM / Smaract™	01.103.054.0	1 pair
900	665	636	MIR2 / DCM / Smaract™	01.103.055.0	1 pair
from 900	740	711	MIR2 / DCM / Smaract™	01.103.056.0	1 pair

#### Dimensions in mm:

W = Width	h = Installation height	U = Standard rack unit	kg = Weight	1 mm = 0.03937 inch
H = Height	d = Insertion depth	(1 U = 44.45 mm)		1 kg = 2.2046 pounds
D = Depth	L = Length	UP = Packaging unit		



MEC20189

## Aluminum chassis runner

- Can be screwed on.
- For installation in 19" rack and 19" enclosure.
- Can be screwed from inside (used in rack suites).
- Height can be adjusted to suit various main-section heights.

- **Material / Finish**

- Extruded aluminum, polished.

- **Load rating**

- 700 N max. with even load distribution.

- **Scope of delivery**

- 2 x chassis runners.
- 1 x Mounting kit.

- **How supplied**

- In pairs.

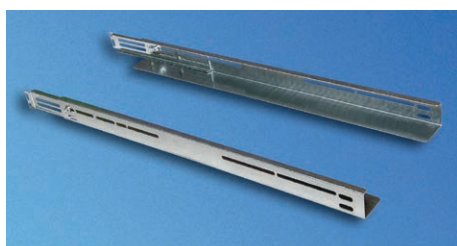
- **Note**

When selecting the chassis runner, please take into account the depth "d" of the rack or enclosure. Four 19" extrusions are required for mounting.

- Mounting adapter for 19" server extrusions 01.147.640.9 1 Set.

- Mounting adapter for Smaract™ 19" server extrusions 01.127.119.9 1 Set.

D <sub>Rack</sub>	d	L	For rack type	Order No.	UP
600	365	336	MIR2 / DCM / Smaract™	01.103.101.0	1 pair
600	440	411	MIR2 / DCM / Smaract™	01.103.102.0	1 pair
800	565	536	MIR2 / DCM / Smaract™	01.103.103.0	1 pair
800	640	611	MIR2 / DCM / Smaract™	01.103.104.0	1 pair
800	665	636	MIR2 / DCM / Smaract™	01.103.105.0	1 pair
from 900	740	711	MIR2 / DCM / Smaract™	01.103.106.0	1 pair
500	285	254	ConAct™	01.103.111.0	1 pair
600	385	354	ConAct™	01.103.112.0	1 pair
600	435	403	Double ProRack with door	01.103.118.0	1 pair
800	635	603	Double ProRack with door	01.103.119.0	1 pair
500	460	428	Double ProRack, no door	01.103.122.0	1 pair
600	560	528	Double ProRack, no door	01.103.123.0	1 pair
700	660	628	Double ProRack, no door	01.103.124.0	1 pair
800	760	728	Double ProRack, no door	01.103.125.0	1 pair



MEC20163



MEC20166

## Chassis runner, adjustable depth

- For installation in 19" rack and 19" enclosure.
- Adjustable depth.
- Can be screwed from inside (used in rack suites).
- Height can be adjusted to suit various main-section heights.

- **Material / Finish**

- Sheet steel, 1.25 mm.
- Zinc-passivated, blue chrome-plated.

- **Load rating**

- 200 N max. with even load distribution.

- **Scope of delivery**

- 2 x basic rails.
- 2 x extension rails.
- 1 x Mounting kit.

- **How supplied**

- In pairs.

- **Note**

When selecting the chassis runner, please take into account the depth "d" of the rack or enclosure. Four 19" extrusions are required for mounting.

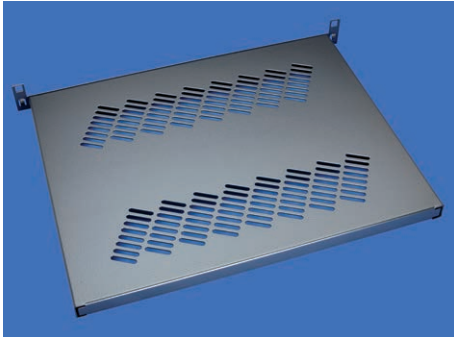
- Mounting adapter for 19" server extrusions 01.147.640.9 1 Set.
- Mounting adapter for Smaract™ 19" server extrusions 01.127.119.9 1 Set.

D <sub>Rack</sub>	d	For rack type	Order No.	UP
600	355-570	MIR2 / DCM / Smaract™	01.103.091.0	1 pair
800-1200	565-740	MIR2 / DCM / Smaract™	01.103.092.0	1 pair
600	385	ConAct™	01.103.091.0	1 pair
500-600	435-460	Double ProRack	01.103.091.0	1 pair
600-800	560-660	Double ProRack	01.103.092.0	1 pair

### Dimensions in mm:

W = Width	h = Installation height	U = Standard rack unit	kg = Weight	1 mm = 0.03937 inch
H = Height	d = Insertion depth	(1 U = 44.45 mm)		1 kg = 2.2046 pounds
D = Depth	L = Length	UP = Packaging unit		

= assemble to order (shipped within 5 working days).  
Caution: In case of larger orders, delivery times may increase.




MEC20221

## 19" QuickFix shelf tool-less assembly

- Quick and easy tool-less mounting. Mounted on 19" cutouts.
- Quick and easy tool-less fitting (one click) and removal (quarter turn).
- Suitable for all racks and enclosures with 19" mounting hole extrusions (9.0 x 9.0 square holes).
- Adjustable depth to accommodate variable recess depths and special dimensions.
- Perforated to optimize air supply.
- **Material**
  - Sheet steel, 1.0 mm.
- **Finish**
  - Final digit of order number .1: powder-coated texture, RAL 7035 light-grey.

- Final digit of order number .8: powder-coated texture, RAL 7021 dark-grey.
- **Load rating**
  - 700 N static with even load distribution.
- **Scope of delivery**
  - 1 x 19" QuickFix shelf.
  - 1 x Mounting kit.
- **How supplied**
  - In sets.
- **Note**
  - Cannot be used for 19" t-slot extrusions.
  - Nothing may be attached on the first upper U otherwise the shelf can not be mounted in the 19" cutouts.

d <sub>insertion depth</sub>	WxL	Order No.	UP
365-500	430 x 300	01.102.071.X	1 unit
565-740	430 x 500	01.102.072.1	1 unit
565-740	430 x 500	01.102.072.8	1 unit 

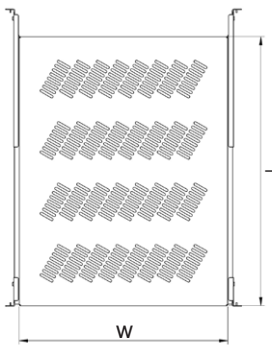


MEC20268

## 19" Shelf partial extension

- Integrated mounting holes at front and rear for handle or cable cantilever.
- Perforated to optimize air supply.
- Locks in extended position (friction lock).
- Quick separator for tool-less removal and decoupling of shelf board.
- Easy installation from the front of 19" extrusions.
- Integrated latching hooks as mounting aid for mounting hole extrusions.
- Installation on the T-slot extrusions by screwing possible.

- **Color**
  - Final digit of order number .1: RAL 7035 light-grey.
  - Final digit of order number .8: RAL 7021 dark-grey.
- **Load rating**
  - 500 N static per item.
- **Scope of delivery**
  - 2 Mounting brackets front left/right.
  - 2 Mounting brackets rear left/right.
  - 2 Telescopic slides.
  - 1 Shelf board.
  - Mounting kit.
- **How supplied**
  - In sets.



MEC20269

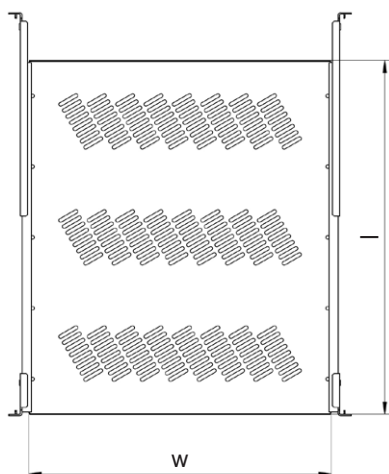
- **Material / Finish**
  - Mounting brackets: Sheet steel 2.0 mm, galvanized.
  - Tableau: Sheet steel 1.5 mm, powder-coated texture.



d <sub>insertion depth</sub>	w x l	Order No.	UP
365-565	427 x 360	01.102.682.X.001	1 unit
565-750	427 x 560	01.102.683.1.001	1 unit
565-750	427 x 560	01.102.683.8.001	1 unit



MEC20270



MEC20271

## 19" shelf fixed

- Integrated mounting holes at front and rear for handle or cable cantilever.
- Perforated to optimize air supply.
- Easy installation from the front of 19" extrusions.
- Integrated latching hooks as mounting aid for mounting hole extrusions.
- Installation on the T-slot extrusions by screwing possible.

### Material / Finish

- Mounting brackets: Sheet steel 2.0 mm, galvanized.
- Mounting rail, tableau: Sheet steel 1.0 mm, powder-coated texture

### Color

- Final digit of order number .1: RAL 7035 light-grey.
- Final digit of order number .8: RAL 7021 dark-grey.

### Load rating

- 500 N static per item.

### Scope of delivery

- 2 Mounting brackets front left / right.
- 2 Mounting brackets rear left / right.
- 2 Mounting rails.
- 1 Shelf board.
- 1 Extension board (from L = 600).
- Mounting kit.

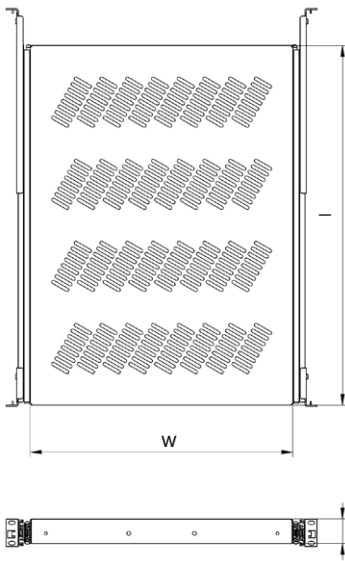
### How supplied

- In sets.

d <sub>insertion depth</sub>	w x l	For rack type	Order No.	UP
365	426 x 300	MIR2 / DCM / Smaract™	01.102.690.1.001	1 unit
440	426 x 300	MIR2 / DCM / Smaract™	01.102.691.1.001	1 unit
565	426 x 500	MIR2 / DCM / Smaract™	01.102.692.1.001	1 unit
565	426 x 500	MIR2 / DCM / Smaract™	01.102.692.8.001	1 unit
640	426 x 600	MIR2 / DCM / Smaract™	01.102.693.1.001	1 unit
640	426 x 600	MIR2 / DCM / Smaract™	01.102.693.8.001	1 unit
740	426 x 600	MIR2 / DCM / Smaract™	01.102.694.1.001	1 unit
740	426 x 600	MIR2 / DCM / Smaract™	01.102.694.8.001	1 unit
435, 460	426 x 300	Double ProRack	01.102.691.1.001	1 unit
560	426 x 500	Double ProRack	01.102.692.1.001	1 unit
635, 660	426 x 600	Double ProRack	01.102.693.1.001	1 unit
385	426 x 300	ConAct™	01.102.690.1.001	1 unit



MEC20266



MEC20267

## 19" Shelf full extension

- Integrated mounting holes at front and rear for handle or cable cantilever.
- Perforated to optimize air supply.
- Locks in extended position (friction lock).
- Quick separator for tool-less removal and decoupling of shelf board.
- Easy installation from the front of 19" extrusions.
- Integrated latching hooks as mounting aid for mounting hole extrusions.
- Installation on the T-slot extrusions by screwing possible.

### Material / Finish

- Mounting brackets: Sheet steel 2.0 mm, galvanized.
- Tableau: Sheet steel 1.5 mm, powder-coated texture.

### Color

- Final digit of order number .1: RAL 7035 light-grey.
- Final digit of order number .8: RAL 7021 dark-grey.

### Load rating

- 500 N static per item.

### Scope of delivery

- 2 Mounting brackets front left / right.
- 2 Mounting brackets rear left / right.
- 2 Telescopic slides.
- 1 Shelf board.
- Mounting kit.

### How supplied

- In sets.

d <sub>insertion depth</sub>	WxL	Order No.	UP
365-565	408 x 360	01.102.680.X.001	1 unit
565-750	408 x 560	01.102.681.X.001	1 unit



MEC20138

## Handle

- Suitable for traditional and heavy-duty shelves.
- With M5 internal thread.

### Material

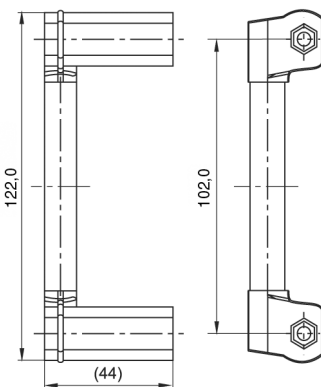
- Die-cast aluminum consoles.
- Extruded aluminum handles.
- Cap made of ABS UL 94 HB.

### Finish

- Handle, powder-coated, grey-blue, RAL 5008/ Cap, light-grey, RAL 7035.

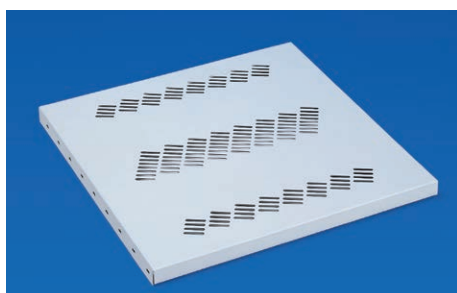
### Scope of delivery

- 2 x handles.



MEC20111

Order No.	UP
00.050.503.1	1 unit



MEC00120

## 19" heavy-duty shelf fixed

- Perforated utility space.
- Installed as base plate for server or battery.

- **Material / Finish**

- Sheet steel 1.5 mm, electroplated zinc, powder-coated texture.

- **Color**

- Final digit of order number .1: RAL 7035 light-grey.
- Final digit of order number .8: RAL 7021 dark-grey.

- **Load rating**

- 1500 N static.

- **Scope of delivery**

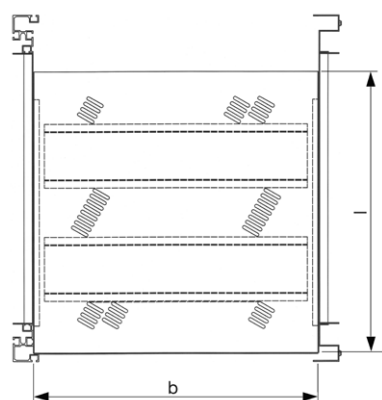
- 1 x shelf, fixed, threaded connection.
- 2 x mounting braces.
- 1 x Mounting kit.

- **How supplied**

- In sets.

- **Note**

- Please order requisite mounting adapter when used for Smaract™ server extrusion.
- Mounting adapter for 19" server extrusions 01.127.119.9 1 Set.



MEC20117

d <sub>insertion depth</sub>	w x l	For rack type	Order No.	UP
565	467 x 460	Miracel™ / Smaract™	01.131.473.X	1 unit
640	467 x 460	Miracel™ / Smaract™	01.131.475.X	1 unit
665	467 x 460	Miracel™ / Smaract™	01.131.476.X	1 unit
740	467 x 560	Miracel™ / Smaract™	01.131.474.X	1 unit



MEC20281

## 19" Cable cantilever

- For easy installation inside the rack/on the shelf; shelf or rack easily attached or decoupled with spring clip.

- Guarantees defined and kink-free cable routing.

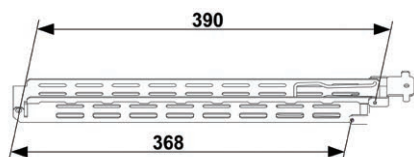
- Minimum space requirement at the back of shelves 40 mm.

- **Scope of delivery**

- 1 Cable cantilever.
- Mounting kit.

- **How supplied**

- In sets.



MEC88005

- **Material / Finish**

- Sheet steel 1.5 mm, zinc passivated.

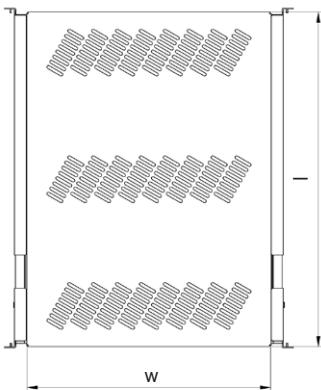


MEC20288

Type	Order No.	UP
2-piece	01.102.728.0.001	1 unit



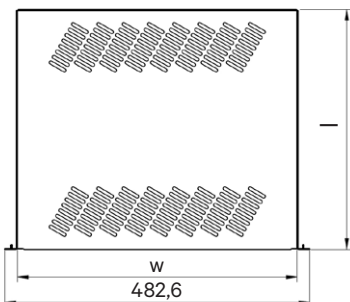
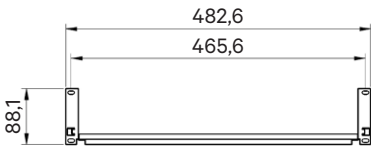
MEC20274



MEC20275



MEC20282



MEC20283

## 19" Heavy-duty shelf full extension

- Perforated to optimize air supply.
  - Locks in retracted and fully extended position.
  - Easy mounting with patented quick-mounting system.
  - Easy installation from the front of 19" extrusions.
  - Integrated latching hooks as mounting aid for mounting hole extrusions.
  - Installation on the T-slot extrusions by screwing possible.
  - Installed as base plate for server or battery.
- **Material / Finish**
    - Mounting brackets: Sheet steel 2.0 mm, galvanized.
    - Tableau: Sheet steel 2.0 mm, powder-coated texture.

- **Color**
  - Final digit of order number .1: RAL 7035 light-grey.
  - Final digit of order number .8: RAL 7021 dark-grey.
- **Load rating**
  - 1200 N static.
- **Scope of delivery**
  - 2 Mounting brackets front left / right.
  - 2 Mounting brackets rear left / right.
  - 2 Telescopic slides.
  - 1 Shelf board.
  - Mounting kit.
- **How supplied**
  - In sets.

d <sub>insertion depth</sub>	w x l	For rack type	Order No.	UP
565-750	409 x 560	MIR2 / DCM / Smaract™	01.102.711.X.001	1 unit

## 19" Shelf 2 U fixed

- For mounting in racks with fixed 19" installation at front.
- Quick and easy mounting on 19" extrusions.
- Integrated latching hooks as mounting aid for mounting hole extrusions.
- Installation on the T-slot extrusions by screwing possible.
- Also for swing frame in the 19" rack and 19" enclosure.

- **Material**
  - Sheet steel 1.5 mm, powder-coated texture.

- **Color**
  - Final digit of order number .1: RAL 7035 light-grey.
  - Final digit of order number .8: RAL 7021 dark-grey.
- **Load rating**
  - 200 N static.
- **Scope of delivery**
  - 1 Shelf fixed.
  - Mounting kit.
- **How supplied**
  - In sets.

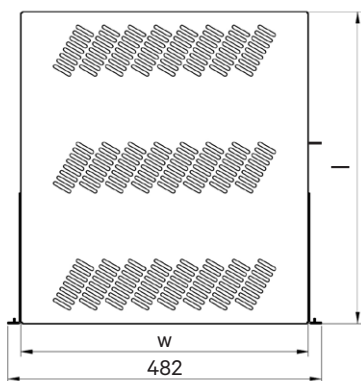
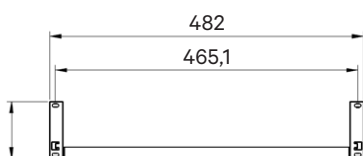
W	H	w x l	Order No.	UP
482,6	88,1	442 x 280	01.102.731.X.001	1 unit
482,6	88,1	442 x 380	01.102.731.X.002	1 unit



## 19" Shelf 2 U adjustable



MEC20284



MEC20285

- For mounting in racks with adjustable 19" installation at front.
- Quick and easy mounting on 19" extrusions.
- Integrated latching hooks as mounting aid for mounting hole extrusions.
- Installation on the T-slot extrusions by screwing possible.
- Also for swing frame in the 19" rack and 19" enclosure.
- Depth can be adjusted in increments of 25 mm.

- **Material**

- Sheet steel 1.5 mm, powder-coated texture.

- **Color**

- Final digit of order number .1: RAL 7035 light-grey.
- Final digit of order number .8: RAL 7021 dark-grey.

- **Load rating**

- 200 N static.

- **Scope of delivery**

- 1 Shelf adjustable.
- Mounting kit.

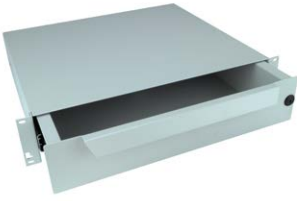
- **How supplied**

- In sets.

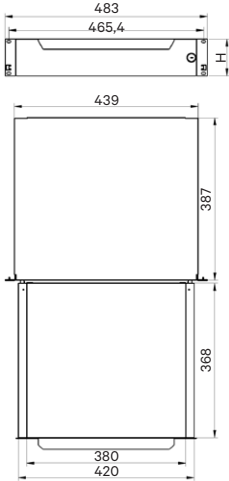
W	H	w x l	Order No.	UP
482,6	88,1	442 x 480	01.102.733.X.003	1 unit

### Dimensions in mm:

W = Width	h = Installation height	U = Standard rack unit	kg = Weight	1 mm = 0.03937 inch
H = Height	d = Insertion depth	(1 U = 44.45 mm)		1 kg = 2.2046 pounds
D = Depth	L = Length	UP = Packaging unit		



MEC20286



MEC20287

## 19" Drawer Installed on the front

- Quick and easy mounting from front to 19" extrusions.
- Integrated latching hooks as mounting aid for mounting hole extrusions.
- Installation on the T-slot extrusions by screwing possible.
- For storing service documents.

### Material / Finish

- Drawer, sheet steel, powder-coated texture.

### Color

- Final digit of order number .1: RAL 7035 light-grey.

- Final digit of order number .8: RAL 7021 dark-grey.

### Load rating

- 150 N static.

### Scope of delivery

- 1 19" drawer with lock, including key.
- 2 Telescopic slides.
- Mounting kit.

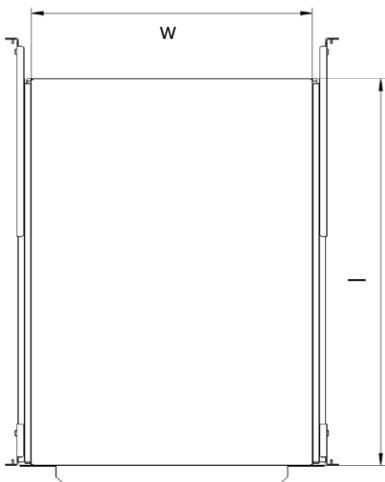
### How supplied

- Pre-assembled.

W	H	U	Order No.	UP
482,6	43,6	1	01.102.740.X.001	1 unit
482,6	88,1	2	01.102.740.X.002	1 unit
482,6	132,5	3	01.102.740.X.003	1 unit



MEC20272



MEC20273

## 19" Writing board 1 U full extension

- With handle.
- Can also be used as shelf.
- Locks in extended position (friction lock).
- Easy installation from the front of 19" extrusions.
- Integrated latching hooks as mounting aid for mounting hole extrusions.
- Installation on the T-slot extrusions by screwing possible.

### Material / Finish

- Mounting brackets: Sheet steel 2.0 mm, galvanized.
- Tableau: Sheet steel 1.0 mm, powder-coated texture.

### Color

- Final digit of order number .1: RAL 7035 light-grey.
- Final digit of order number .8: RAL 7021 dark-grey.

### Load rating

- 500 N static.

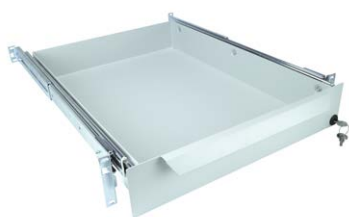
### Scope of delivery

- 2 Mounting brackets front left / right.
- 2 Mounting brackets rear left / right.
- 2 Telescopic slides.
- 1 Tableau with handle.
- Mounting kit.

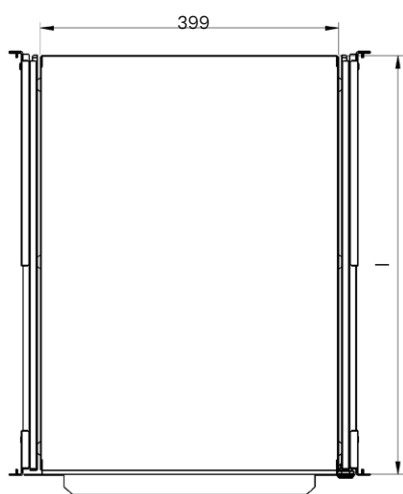
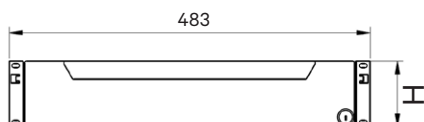
### How supplied

- Pre-assembled.

d <sub>insertion depth</sub>	w x l	Order No.	UP
365-565	408 x 360	01.102.705.X.001	1 unit
565-750	408 x 360	01.102.706.X.001	1 unit



MEC20279



MEC20280

## 19" Drawer with lock

- For mounting in racks with fixed 19" installation at front and rear.
- Full extension.
- With lock.
- Locks in extended position (friction lock).
- Quick separator for tool-less removal and decoupling of drawer.
- Easy installation from the front of 19" extrusions.
- Integrated latching hooks as mounting aid for mounting hole extrusions.
- Installation on the T-slot extrusions by screwing possible.

### Material / Finish

- Mounting brackets: Sheet steel 2.0 mm, galvanized.
- Drawer: Sheet steel 1.0 mm, powder-coated texture.

### Color

- Final digit of order number .1: RAL 7035 light-grey.
- Final digit of order number .8: RAL 7021 dark-grey.

### Load rating

- 400 N static.

### Scope of delivery

- 2 Mounting brackets front left / right.
- 2 Mounting brackets rear left / right.
- 2 Telescopic slides.
- 1 19" drawer with lock, including key.
- Mounting kit.

### How supplied

- Pre-assembled.

d <sub>insertion depth</sub>	U	w x l	Order No.	UP
565-750	2	408 x 562	01.102.726.X.001	1 unit
565-750	4	408 x 562	01.102.726.X.002	1 unit



MEC20027

## Document holder

- Self-adhesive; for higher loads use 6 mm holes.
- For DIN A4 documents.

### Material

- High-impact Polystyrol.

### Color

- Grey.

### Scope of delivery

- 1 x document holder.

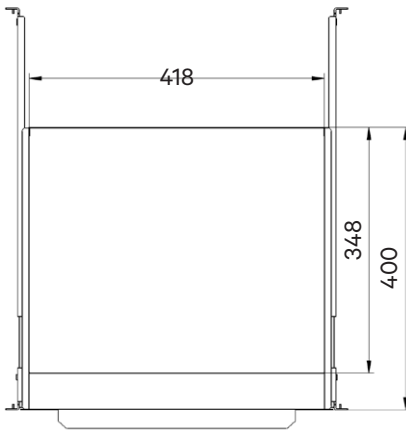
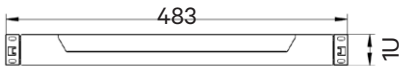
W	L	T	Bestell-Nr.	VE
264	236	30	05.016.045.0	1 unit

### Dimensions in mm:

W = Width	h = Installation height	U = Standard rack unit	kg = Weight	1 mm = 0.03937 inch
H = Height	d = Insertion depth	(1 U = 44.45 mm)		1 kg = 2.2046 pounds
D = Depth	L = Length	UP = Packaging unit		



MEC20276



MEC20277

## 19" Keyboard drawer 1 U for 19" keyboard

- With hand support.
- With cable strain relief.
- Locks in extended position (friction lock).
- Quick separator for tool-less removal and decoupling of drawer.
- Easy installation from the front of 19" extrusions.
- Integrated latching hooks as mounting aid for mounting hole extrusions.
- Installation on the T-slot extrusions by screwing possible.

### Material / Finish

- Mounting brackets: Sheet steel 2.0 mm, galvanized.
- Drawer: Sheet steel 1.0 mm, powder-coated texture.
- Front panel: Sheet steel 1.25 mm, powder-coated texture.

### Color

- Final digit of order number .1: RAL 7035 light-grey.
- Final digit of order number .8: RAL 7021 dark-grey.

### Scope of delivery

- 2 Mounting brackets front left / right.
- 2 Mounting brackets rear left / right.
- 2 Telescopic slides.
- 1 19" keyboard drawer, 1 U.
- 1 Velcro for securing the keyboard.
- Mounting kit.

### How supplied

- Pre-assembled.

d <sub>insertion depth</sub>
565-750

Order No.	UP
01.102.717.X.001	1 unit



MEC20278

## 19" Keyboard drawer 1 U with extract for PC mouse

- With palm rest.
- Mouse area can be extracted right/left.
- Storage compartment for PC mouse.
- Locks in extended position (friction lock).
- Quick separator for tool-less removal and decoupling of drawer.
- Easy installation from the front of 19" extrusions.
- Integrated latching hooks as mounting aid for mounting hole extrusions.
- Installation on the T-slot extrusions by screwing possible.

### Dimensions

- Useful shelf space:  
Dimensions without palm rest  
372 x 209 x 24 mm (WxDxH).

### Material / Finish

- Mounting brackets: Sheet steel 2.0 mm, galvanized.
- Drawer, front panel: Sheet steel 1.25 mm, powder-coated texture.

### Color

- Final digit of order number .1: RAL 7035 light-grey.
- Final digit of order number .8: RAL 7021 dark-grey.

### Scope of delivery

- 2 Mounting brackets front left / right.
- 2 Mounting brackets rear left / right.



- 2 Telescopic slides.
- 1 19" keyboard drawer, 1 U.
- 1 Palm rest.
- Mounting kit.

• **How supplied**

- In sets.

• **Note**

- Keyboard is not included. Not compatible with racks, depth 600.

d <sub>insertion depth</sub>	Order No.	UP
565-750	01.102.722.X.001	1 unit



ITC20000

### Luminestra LED Rack lighting

- Only for rack type MIR2 / DCM W 700, W 800.
- Mounted on the basic frame above the vertical extrusions.
- With LED 4000 Kelvin, 7 watt.
- With on/off rocker switch.
- With 1,8 m power supply cable and EURO plug.
- Complete with mounting material.
- Only with 123 mm front clearance space.

• **Color**

- White.

• **Scope of delivery**

- 1 x Luminestra rack lamp.
- 2 x mounting brackets.
- 1 x Mounting kit.

W	H	D	Order No.	UP
28	38,4	583	01.131.227.9	1 unit

**Dimensions in mm:**

W = Width    h = Installation height    U = Standard rack unit  
 H = Height    d = Insertion depth    (1 U = 44.45 mm)  
 D = Depth    L = Length    UP = Packaging unit

**Conversion:**

1 mm = 0.03937 inch  
 1 kg = 2.2046 pounds

## Compact Rack Lamp



### • Features

- Magnetic mounting.
- Energy-saving lamp.
- Protective contact socket.
- ON/OFF switch.
- Cover panel.

### • Compliance

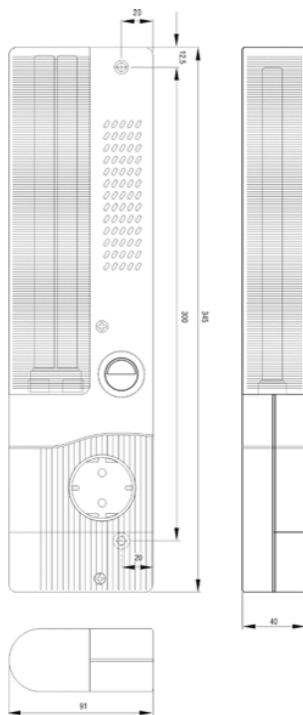
- VDE ICE.

### • Protection rating

- IP20.

### • Technical data

- Operating voltage  
230 V / 50-60 Hz.
- Lighting: compact fluorescent tube with integrated starter.
- Power consumption:  
11 W = 75 W bulb
- Light intensity: 900 Lm
- Socket: 230 VAC / 16A
- Connections: 3-pole screw clamp,  
2.5 mm<sup>2</sup> with strain relief.



W	H	D	Order No.	UP
91	40	345	01.131.465.9-001	1 unit

## The right mounting set for every rack type

Knürr DCM™	Knürr™ MIR2 T-slot	Knürr™ MIR2 Mount. holes	Knürr™ MIR2 Server	Knürr™ MIR2 Swing frame	Smaract™ T-slot	Smaract™ Mount. holes	Smaract™ Server	Double ProRack T-slot	Double ProRack Mount. holes	ConAct™	Name	Order No.	UP
	●					●					T-Slot mounting set, M5, wide	05.041.320.9	1 set
		●					●				Mounting set Mount. holes M5/BI 1.5	05.041.321.9	1 set
●			●	●			●				Mounting set Mount. holes M5/BI 2.5	05.041.325.9	1 set P
								●			Mounting set dpr T-slot, M5 narrow	05.041.323.9	1 set
									●		Mounting set dpr mount. holes M5	05.041.322.9	1 set
										●	Mounting Set, Con Act™ M5	05.041.324.9	1 set

## The right mounting set for front panel mounting

Model: Z-form screw

Knürr DCM™	Knürr™ MIR2 T-slot	Knürr™ MIR2 Mount. holes	Knürr™ MIR2 Server	Knürr™ MIR2 Swing frame	Smaract™ T-slot	Smaract™ Mount. holes	Smaract™ Server	Double ProRack T-slot	Double ProRack Mount. holes	ConAct™	Name	Order No.	UP
	●					●					FP mounting set, T-slot M5, wide	05.041.335.9	1 set P
		●					●			●	FP mounting set Mount. holes M5/BI 1.5	05.041.336.9	1 set
●			●	●			●		●		FP mounting set Mount. holes M5/BI 2.5	05.041.337.9	1 set P
								●			FP mounting set, T-slot M5, narrow	05.041.338.9	1 set

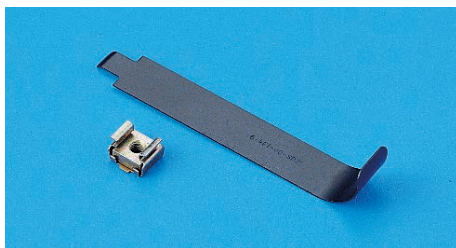
## The right mounting set for front panel mounting

Model: countersunk screw + rosette

Knürr DCM™	Knürr™ MIR2 T-slot	Knürr™ MIR2 Mount. holes	Knürr™ MIR2 Server	Knürr™ MIR2 Swing frame	Smaract™ T-slot	Smaract™ Mount. holes	Smaract™ Server	Double ProRack T-slot	Double ProRack Mount. holes	ConAct™	Name	Order No.	UP
	●					●					FP mounting set, T-slot M5, wide	05.041.340.9	1 set
		●					●			●	FP mounting set Mount. holes M5/BI 1.5	05.041.341.9	1 set
●			●	●			●		●		FP mounting set Mount. holes M5/BI 2.5	05.041.342.9	1 set
								●			FP mounting set, T-slot M5, narrow	05.041.343.9	1 set

## The right accessories for every rack type

Knürr DCM™	Knürr™ MIR2 T-slot	Knürr™ MIR2 Mount. holes	Knürr™ MIR2 Server	Knürr™ MIR2 Swing frame	Smaract™ T-slot	Smaract™ Mount. holes	Smaract™ Server	Double ProRack T-slot	Double ProRack Mount. holes	ConAct™	Name	Order No.	UP
	●				●						Spring nut, M5 wide	01.350.431.9	1 set
								●			Spring nut, M5 narrow	05.041.503.9	1 set
	●				●						Spring nut M6	01.350.405.9	1 set
		●				●				●	Cage nut M5/BI 1.5	05.041.513.7	1 set
●			●	●			●		●		Cage nut M5/BI 2.5	05.041.518.7	1 set
	●				●			●			Oval-head screws, Z-form, M5 x 10	05.041.330.9	1 set
●		●	●	●		●	●		●	●	Oval-head screws, Z-form, M5 x 16	05.041.331.9	1 set
	●				●			●			Countersunk screw M5 x 12 + rosette	05.041.203.9	1 set
●		●	●	●		●	●		●	●	Countersunk screw M5 x 16 + rosette	05.041.290.9	1 set



MIR0014

### Mounting tool for cage nuts

- Allows easy clipping of cage nuts on extrusions.

- **Material**

- Spring steel.

- **Scope of delivery**

- 1 x mounting tool.

Order No.	UP
01.130.985.9	1 unit

#### Dimensions in mm:

W = Width    h = Installation height    U = Standard rack unit  
 H = Height    d = Insertion depth    (1 U = 44.45 mm)  
 D = Depth    L = Length    UP = Packaging unit

#### Conversion:

kg = Weight    1 mm = 0.03937 inch  
 1 kg = 2.2046 pounds

= assemble to order (shipped within 5 working days).  
 Caution: In case of larger orders, delivery times may increase.



MEC20125

### T-Slot mounting set, M5, wide for MIR2 / Smaract™

- For securing 19" front panels and 19" components.

• **Scope of delivery**

- 100 x spring nuts, M5 wide.
- 100 x oval-head screws, Z-form, M5 x 10.

- 20 x cage nuts M5 /plate, 1.5 mm.
- 20 x cylinder screws, M5 x 8.

• **How supplied**

- In sets.

Order No.	UP
05.041.320.9	1 set



MEC20126

### Mounting set, M5 / plate, 1.5 mm for MIR2 / Smaract™

- For securing 19" front panels and 19" components.

• **Scope of delivery**

- 100 x cage nuts M5 /plate, 1.5 mm.
- 100 x oval-head screws, Z-form, M5 x 16.

- 20 x spring nuts, M5 wide.
- 20 x cylinder screws, M5 x 8.

• **How supplied**

- In sets.

Order No.	UP
05.041.321.9	1 set



MEC20126

### Mounting set; mounting holes server extrusion M5 / plate, 2.5 mm for Knürr™ MIR2 / Knürr DCM™ / Smaract™

- For securing 19" front panels and 19" components.

• **Scope of delivery**

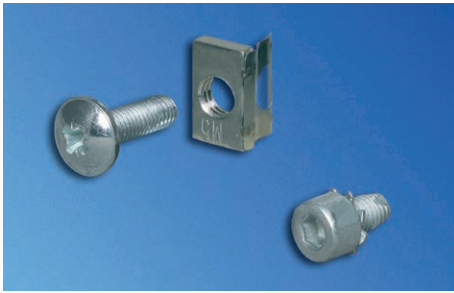
- 100 x cage nuts M5 / plate, 2.5mm.
- 100 x oval-head screws, Z-form, M5 x 16

- 20 x spring nuts, M5 wide.
- 20 x cylinder screws, M5 x 8.

• **How supplied**

- In sets.

Order No.	UP
05.041.325.9	1 set 



MEC20127

## T-slot mounting set, M5, narrow for Double ProRack

- For securing 19" front panels and 19" components.

- **Scope of delivery**

- 100 x spring nuts, M5 narrow.
- 20 x oval-head screws, Z-form, M5 x 10.

- 50 x cylinder screws, M5 x 10.
- 30 x oval-head screws, Z-form, M5 x 8.

- **How supplied**

- In sets.

Order No.	UP
05.041.323.9	1 set



MEC20126

## Mounting set; mounting holes M5 for Double ProRack

- For securing 19" front panels and 19" components.

- **Scope of delivery**

- 100 x cage nuts M5 /plate, 2.5 mm.
- 50 x oval-head screws, Z-form, M5 x 16.

- 40 x spring nuts, M5 narrow.
- 40 x cylinder screws, M5 x 10.

- **How supplied**

- In sets.

Order No.	UP
05.041.322.9	1 set



MEC20129

## Front panel mounting set, T-slot, M5 wide for MIR2 / Smaract™

- For securing 19" front panels and 19" components.

- **Scope of delivery**

- **Type 1:**

- 50 x spring nuts, M5 wide.
- 50 x oval-head screws, Z-form, M5 x 10.

- **Type 2:**

- 50 x spring nuts, M5 wide.
- 50 x countersunk screws, M5 x 12.
- 50 x rosettes.

- **How supplied**

- In sets.



MEC20130

Model	Order No.	UP
Type 1: Z-form screw	05.041.335.9	1 set
Type 2: screw + rosette	05.041.340.9	1 set





MEC20096

### Mounting holes, mounting set M5 for ConAct

- For securing 19" front panels and 19" components.

• **Scope of delivery**

- 50 x cage nuts M5 /plate, 1.5 mm.
- 50 x oval-head screws, Z-form, M5 x 16.

- 50 x cylinder screws, M5 x 8.
- 25 x locking nuts, M5.

• **How supplied**

- In sets.

Order No.	UP
05.041.324.9	1 set



MEC20098

### Front panel mounting set for Knürr™ MIR2 / Smaract™ / ConAct™

- For securing 19" front panels and 19" components.

- Mounting holes.

• **Scope of delivery**

- **Type 1:**
- 50 x cage nuts M5 / plate, 1.5 mm.
- 50 x oval-head screws, Z-form, M5 x 16.

• **Type 2:**

- 50 x cage nuts M5 / plate, 1.5 mm.
- 50 x countersunk screws, M5 x 16.
- 50 x rosettes.

• **How supplied**

- In sets.

Model	Order No.	UP
Type 1: Z-form screw	05.041.336.9	1 set
Type 2: screw + rosette	05.041.341.9	1 set



MEC20097

### Front panel mounting set; mounting holes, M5 / plate, 2.5 mm for Knürr™ MIR2 / Knürr DCM™ / Smaract™ / Double ProRack

- For securing 19" front panels and 19" components.

• **Scope of delivery**

- **Type 1:**
- 50 x cage nuts M5 / plate, 2.5 mm.
- 50 x oval-head screws, Z-form, M5 x 16.

• **Type 2:**

- 50 x cage nuts M5 / plate, 2.5 mm.
- 50 x countersunk screws, M5 x 16.
- 50 x rosettes.

• **How supplied**

- In sets.

Model	Order No.	UP
Type 1: Z-form screw	05.041.337.9	1 set
Type 2: screw + rosette	05.041.342.9	1 set



MEC20098



MEC20097



MEC20129

## Front panel mounting set, T-slot for Double ProRack

- For securing 19" front panels and 19" components.

- **Scope of delivery**

- **Type 1:**

- 50 x spring nuts, M5 narrow.
    - 50 x oval-head screws, Z-form, M5 x 10.

- **Type 2:**

- 50 x spring nuts, M5 narrow.
    - 50 x countersunk screws, M5 x 12.
    - 50 x rosettes.

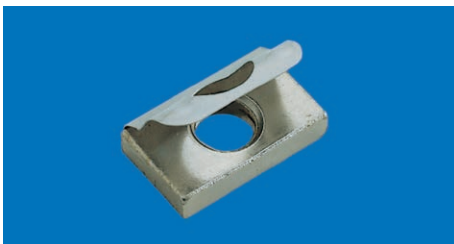
- **How supplied**

- In sets.



MEC20130

Model	Order No.	UP
Type 1: Z-form screw	05.041.338.9	1 set
Type 2: screw + rosette	05.041.343.9	1 set



MEC00060

## Spring nut

- To clip on T-slot where required.

- **Type 1:**

- M5 wide for MIR2 / Smaract™.
    - T-slot size: 10 x 13 mm.

- **Type 2:**

- M5 narrow for Double ProRack.
    - T-slot size: 8 x 13 mm.

- **Type 3:**

- M6 for MIR2 / Smaract™.
    - T-slot size: 10 x 13 mm.

- **Scope of delivery**

- 50 x spring nuts.

- **How supplied**

- In sets.

Model	Order No.	UP
Type 1: M5 wide	01.350.431.9	1 set
Type 2: M5 narrow	05.041.503.9	1 set
Type 3: M6	01.350.405.9	1 set



MEC20141

## Countersunk screw + rosette

- IEC DIN EN ISO 7047.

- **Scope of delivery**

- 50 x countersunk screws.
  - 50 x rosettes.

- **How supplied**

- In sets.

Model	Order No.	UP
M5 x 12	05.041.203.9	1 set
M5 x 16	05.041.290.9	1 set



MEC20139

## Cage nut

- For clipping into extrusions with mounting holes.

- **Type 1:**  
Plate, 1.5 mm for MIR2 / Smaract™ / ConAct™.
- **Type 2:**  
Plate, 2.5 mm for MIR2 Server / Smaract™ Server / Double ProRack with 19" mounting holes.

- **Scope of delivery**
  - 50 x cage nuts.
- **How supplied**
  - In sets.

Model	Order No.	UP
M5: Type 1: Plate, 1.5 mm	05.041.513.7	1 set
M5: Type 2: Plate, 2.5 mm	05.041.518.7	1 set
M6: Type 1: Plate, 1.5 mm	05.041.514.7	1 set
M6: Type 2: Plate, 2.5 mm	05.041.519.7	1 set



MEC20140

## Oval-head screw

- IEC DIN 967.

- **Scope of delivery**
  - 50 x oval-head screws, Z-form.

- **How supplied**
  - In sets.

Model	Order No.	UP
M5 x 10	05.041.330.9	1 set
M5 x 16	05.041.331.9	1 set
M6 x 10	05.041.332.9	1 set
M6 x 16	05.041.333.9	1 set



MEC80020

## Oval-head screw self-guiding

- DIN 7500.
- Suitable for system accessories fixed on the inside of the 19" extrusions.
- Suitable for 19" steel and 19" aluminum extrusions.
- Easy screwing.

- **Scope of delivery**
  - 50 x oval-head screws, M6x10.
- **How supplied**
  - In sets.

Model	Order No.	UP
M6 x 10	05.041.334.9	1 set



MEC20227

## Oval-head screw with Phillips head

- IEC DIN EN ISO 7045.

- **Scope of delivery**

- 1 x set of 50 units.

L	Model	Order No.	UP
8	M 5 no washer	05.041.611.8	1 set
12	M 4 no washer	05.041.609.8	1 set
12	M 5 with washer	05.041.613.8	1 set
16	M 5 with washer	05.041.614.8	1 set
16	M 6 with washer	05.041.616.8	1 set



MEC20228

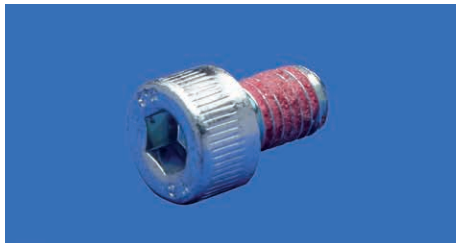
## Cylinder screw with hexagon head

- IEC ISO 4762 (modified).

- **Scope of delivery**

- 1 x set of 50 units.

L	Model	Order No.	UP
8	M 5	05.041.574.8	1 set
8	M 5 microencapsulated	05.041.575.9	1 set



MEC20226

## Tensiloc nut

- **Material**

- Steel nickel-plated.

- **Scope of delivery**

- 1 x set of 50 units.

Model	Order No.	UP
M 5	05.041.533.8	1 set



MEC20225

### Dimensions in mm:

W = Width	h = Installation height	U = Standard rack unit	kg = Weight	1 mm = 0.03937 inch
H = Height	d = Insertion depth	(1 U = 44.45 mm)		1 kg = 2.2046 pounds
D = Depth	L = Length	UP = Packaging unit		

### Conversion:

**P** = assemble to order (shipped within 5 working days).  
Caution: In case of larger orders, delivery times may increase.



HEI00379

## Distribution box

- For mounting trade-standard installation technology DIN rail components, such as fuses clamps, relays, etc.
- When installed, the mounting level can be pulled out at the front and locked in position, significantly simplifying the wiring of the individual components. Not available for "fixed installation" model. Up on request: Delivered assembled and wired. Further versions and models up on request.
- Cable entry at the rear via double brush strip (optionally via bushing sockets).
- Cable strain relief on the inside and therefore accessible from the front.
- Labeling strips on the front, above and below the installation space.
- Installation options available for power distribution with 230 V AC, but also in the low-voltage range (e.g. 48 V DC).
- 19" slot-in, 3 U, depth 150 mm.



HEI20282

- Installation space for up to 22 pieces of equipment with 18 mm width each.
- Mounting of the TS35 DIN rail on several levels with simple plug-in connection. Not available for "fixed installation" model.
- "Snap-in" mounting of DIN rail components.
- Easy access to the protective grounding and neutral conductor rails from the front.
- Various positioning options available for N and PE rails. Not available for "fixed installation" model.

- **Material / Finish**

- Panels powder-coated texture, RAL 7035 light-grey.
- Main unit, sheet steel, zinc-passivated.

- **Scope of delivery**

- 1 x distribution box.
- Including N and PE rails, cable entry, cable strain relief, empty panel covers and grounding set.

- **How supplied**

- Fully assembled.

W	H	D	U	19"	Model	Order No.	UP
482.6	134	150	3	•	Pull-out	03.013.385.1	1 unit



ELM00137

## Door contact switch

- On/off switch, 4 A, 230 V ~.
- Activated by opening and closing door.

- **Scope of delivery**

- 1 x door contact switch (not wired).
- 1 x mounting bracket.
- 1 x Mounting kit.

Order No.	UP
01.110.722.9	1 unit
01.110.722.9.001	1 unit

For rack type ConAct™





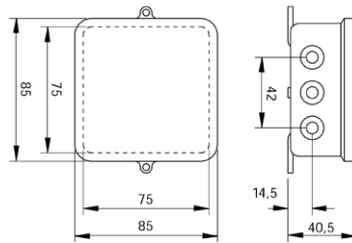
ELM00033

## Cable junction box

- For 230 V electrical installation on-site.
- As fixed-location exchange point.
- Quick and easy mounting.

- **Scope of delivery**
  - 1 x cable junction box.

Order No.	UP
00.078.720.9	1 unit



ELM00034



ELM00128

## Modular terminal box

- For 230V electrical installation on-site.
- With series terminal, 8 x 42.
- Pg 11/16 entry.
- IP 54.

- **Material**
  - High-impact, fire-resistant polystyrene.
- **Scope of delivery**
  - 1 x modular terminal box.
  - 4 pg compression glands, pg11.

Order No.	UP
01.117.521.9	1 unit



ELM00114

## 1 equipotential bonding bar

- For central grounding of all protective conductors.
- With sealable cover.
- Connection options:
  - 1 x round conductor 8 – 10 mm Ø
  - 1 x flat conductor up to 30 mm wide or round conductor 8 – 10 mm Ø.
- 7 x single or multi-wire conductors up to 16 mm<sup>2</sup> or fine-wire conductors up to 10 mm<sup>2</sup>.

- **Material**
  - Base plate and cover plate, high-impact plastic.
  - Brass nickel-plated contact strip.
- **Scope of delivery**
  - 1 x equipotential bonding bar.

Order No.	UP
01.117.524.3	1 unit





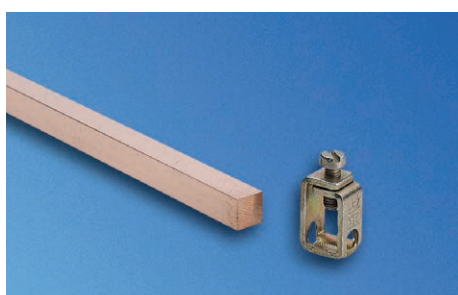
DOP20016

## Contact clamp

- Enables safe connection of equipment and components to grounding bar.
- For cables up to 25 mm<sup>2</sup>.

- **Scope of delivery**
  - 20 x contact clamps.

Order No.	UP
01.110.715.9	20 units



ELM00068

## Grounding bar

- For safe grounding or potential equalization of equipments and components.

- **Material**
  - Electrolyte copper 9 x 9.

- **Scope of delivery**
  - 1 x grounding bar.
  - 2 x brackets.
  - 1 x Mounting kit.

U	Model	Order No.	UP
24	For Double ProRack	01.240.546.9	1 unit
21	For Double ProRack	01.240.545.9	1 unit
18	For Double ProRack	01.240.544.9	1 unit
15	For Double ProRack	01.240.543.9	1 unit
45	For Knürr™ MIR2 / Knürr DCM™	01.110.709.9	1 unit
41	For Knürr™ MIR2 / Knürr DCM™	01.110.708.9	1 unit
12	For Knürr™ MIR2 / Knürr DCM™	01.110.703.9	1 unit

### Dimensions in mm:

W = Width	h = Installation height	U = Standard rack unit	kg = Weight	1 mm = 0.03937 inch
H = Height	d = Insertion depth	(1 U = 44.45 mm)		1 kg = 2.2046 pounds
D = Depth	L = Length	UP = Packaging unit		

= assemble to order (shipped within 5 working days).  
Caution: In case of larger orders, delivery times may increase.

## Features

- Allows for prescribed cable radii.
- Components are easy to secure and use.
- Components feature addition functions.
- Extensive use of reusable Velcro strips precludes cable strain.
- No blockage of airflow within the rack.

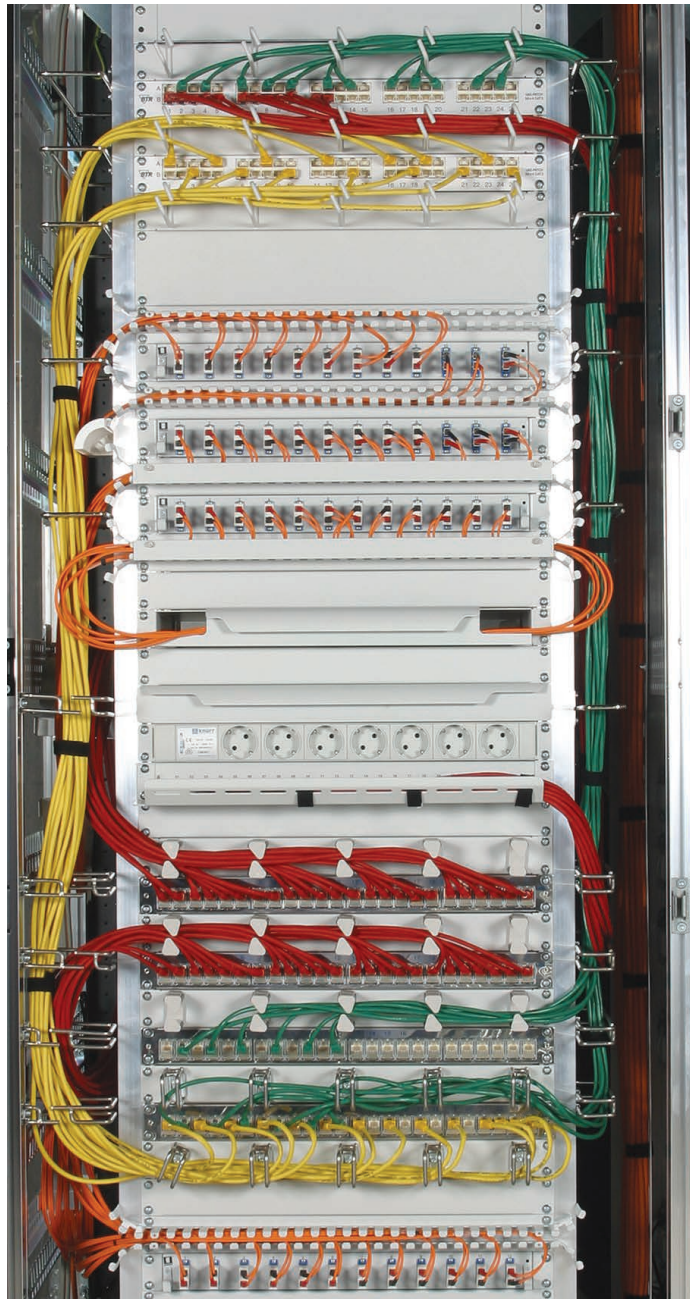
## Vertiv™ Knürr™ Cable Management

**Global networking is continuing to grow, meaning users are in need of an intelligent cable management solution.**

To meet this demand, Vertiv™ Knürr™ offers a range of products and solutions for server racks, active and passive network racks, as well as special racks.

Our range not only allows you to quickly and easily set up and dismantle racks, it also makes it much simpler to troubleshoot problems in your systems and expand your systems. Our cable management components are all based on a number of key principles: Simple and self-explanatory operation, versatile application options, a clear structure, and a cost-efficient design.

Thanks to the Vertiv™ Knürr™ cable management system, your rack will be equipped for the future and will save you time and money for the long term.



## Vertiv™ Knürr™ Cable Management Terminology

Laying cables involves ensuring that mechanical stresses are completely avoided.

- **Bending load**

The bending radii may never fall below the values provided by the cable manufacturer in the respective data sheets. Where excessive bending occurs, the cables' electrical properties are impaired, and transmission bandwidths and ranges are adversely affected. If manufacturer specifications are not available, then the following rule of thumb applies: loose cabling should be at least 15 times the external cable diameter and fixed cabling at least 10 times the external cable diameter.

- **Buckling load**

Extreme bending loads can cause the cable to break.

- **Tensile load**

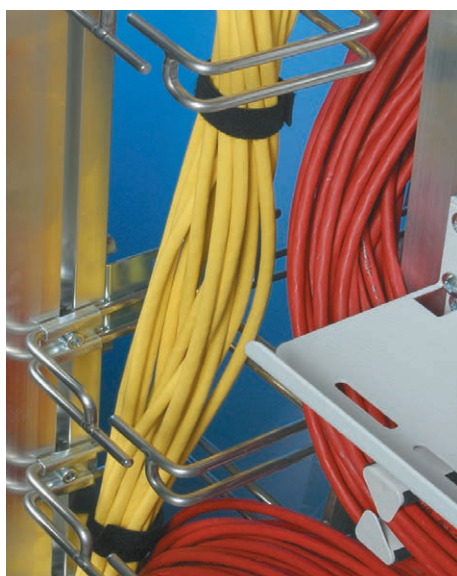
This is determined solely by the copper cross-section of the conductor, as all other materials are too soft. The cable may not be exposed to stress exceeding 50 N/mm<sup>2</sup> (Cu cross-section) as this causes the conductors to stretch which reduces the cross-section. If higher "pulling" forces are required, cables with additional strain-reduction elements must be used.

- **Compressive stress**

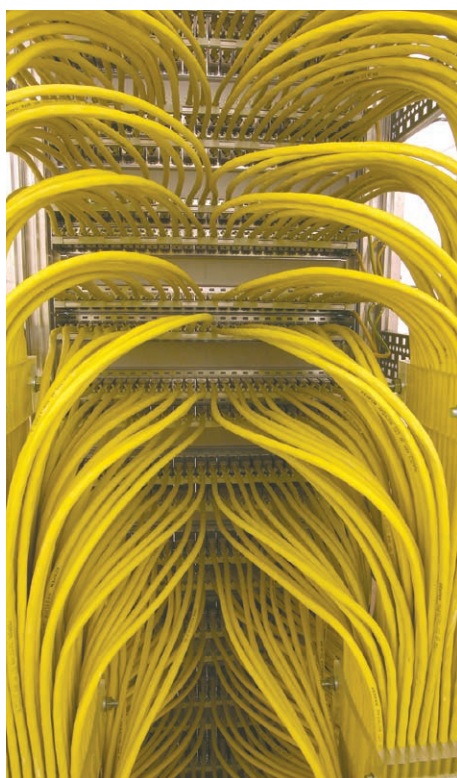
Compressive stress is caused by loads bearing down from above, fixed clamping or sharp cable kinking and must always be avoided, as otherwise the "loose" cable structure changes and electrical transmission properties are impaired.

- **Torque strains (twisting)**

Cables must never be subjected to torque strains, as they cause cable elements to shift and change their position relative to each other, thereby impairing transmission properties.



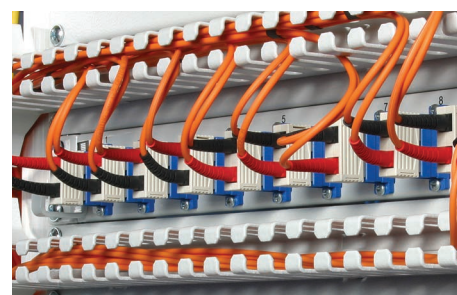
MEC20064



MEC20086



MEC20084



MEC20058





1. MEC20082



2. MEC20070

## Vertiv™ Knürr™ Cable Management Proper Usage

- Various components for fiberglass and copper cables especially fastening options such as Velcro and cable bundling using different colored strips – guarantee transparent cable management, providing an optimal starting point for both intelligent network expansion and ideal service convenience. (1)
- Special attention has been paid to ensuring that all cable management components can be fastened with Velcro strips which eliminate cable strain and can be reused at any time. Velcro cable ties also aid the installation technician as they are easily manageable, using pinch-free cable bundling. (2)
- Excess cable is stored separately from the patch fields while remaining easily accessible. Copper cable excess can be stored separately from fiber glass excess within the Knürr™ rack systems: the copper cables are stored on the side while the more sensitive fiberglass cables are stored in a drawer at the front. (3)
- A closer look at the individual products reveals their outstanding versatility. The cable-routing multifunctional brace, for example, not only provides the option of routing cables both horizontally and vertically using Velcro or cable ties, but additionally allows numerous components to be mounted with screws and caged nuts. These caged nuts can also be shifted in a slot with room for play, so that every mounting dimension is accommodated.



3. MEC20099

## Features

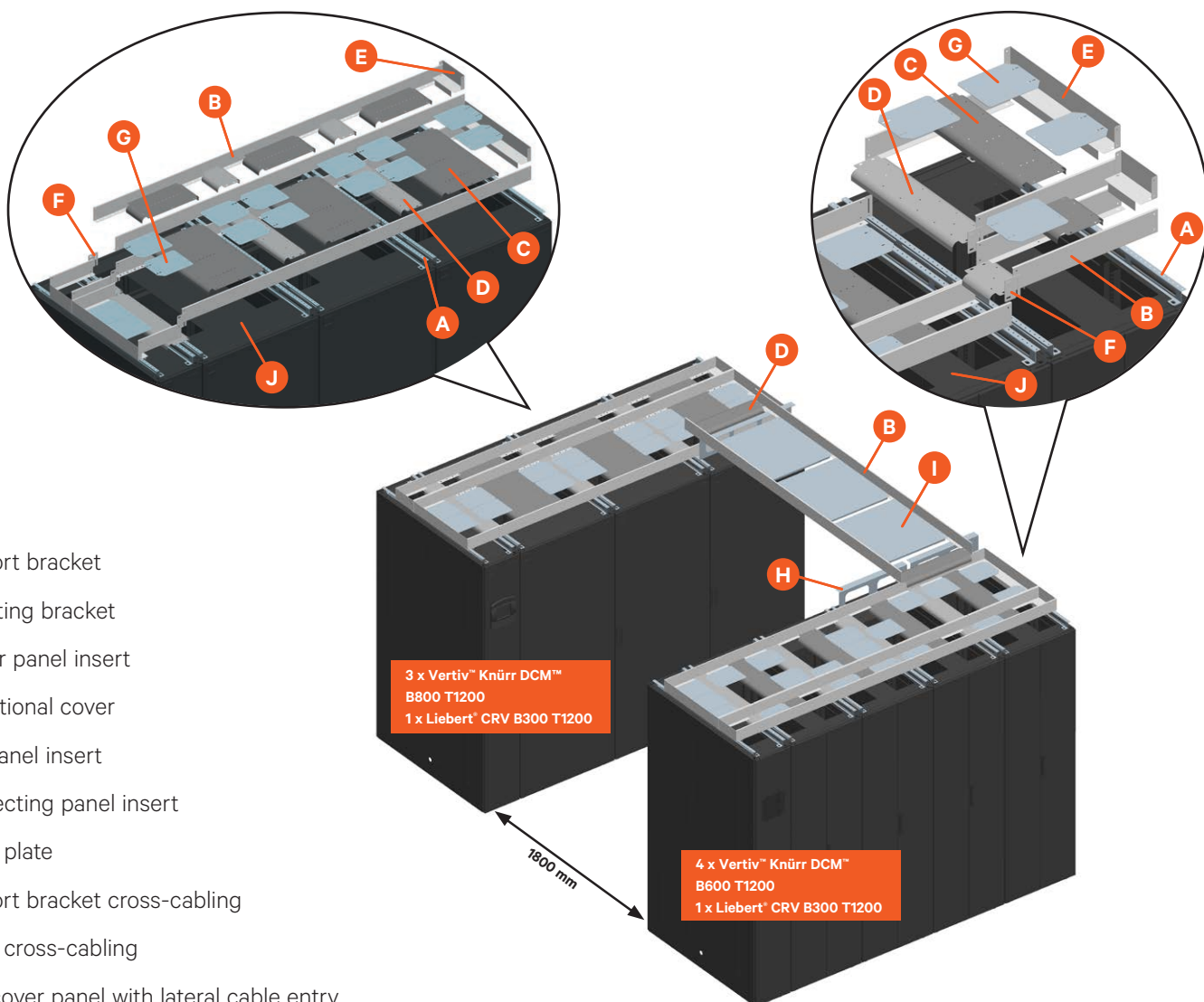
- Modular, extremely flexible.
- Robust construction.
- Includes integrated radius for cable entry into rack.
- New cover panel with lateral cable entry.
- Selection of cable throughs and mesh cable trays.
- Suitable for Vertiv™ Knürr DCM™ and Vertiv™ Knürr™ MIR.
- Includes Vertiv™ SmartAisle™ enclosure.
- Various combinations possible.

## Vertiv™ Knürr™ Cable Management Overhead Cabling

### Vertiv™ Overhead Cabling Solution

The Vertiv™ Knürr™ overhead cable management system is a complete, modular system which offers a variety of cable-tray installment options. The components are very flexible and can be installed on site or modified with ease, to accommodate cable-management requirements that differ from rack to rack. This extremely sturdy and robust system can withstand high stress levels and is suitable for any application. Combined with other items from the Knürr™ cable-management product range, it provides a comprehensive solution that delivers proper cable bend radii.

Example of overhead configuration



### Legend

- A** Support bracket
- B** Mounting bracket
- C** Center panel insert
- D** Transitional cover
- E** End panel insert
- F** Connecting panel insert
- G** Cover plate
- H** Support bracket cross-cabling
- I** Cover cross-cabling
- J** New cover panel with lateral cable entry

## Configuration Assistant

Sample Order	Name	Item	
Left rack suite	Vertiv™ Knürr DCM™ B800 T1200	3	01.147.722.8
	New cover panel with lateral cable entry <b>J</b>	3	01.147.579.8
	Liebert® CRV B300 T1200	1	CR0302XXX-XXXXXX
	Support bracket <b>A</b>	4	05.045.005.X
	Mounting bracket <b>B</b>	2	05.045.011.X
		2	05.045.015.X
	Center panel insert <b>C</b>	3	05.045.023.X
		3	05.045.024.X
	Transitional cover <b>D</b>	3	05.045.031.X
		3	05.045.032.X
	End panel insert <b>E</b>	1	05.045.041.X
		1	05.045.042.X
	Connecting panel insert <b>F</b>	1	05.045.045.X
Cover plate <b>G</b>	2	05.045.047.X	
Right rack suite	Vertiv™ Knürr DCM™ B800 T1200	4	01.147.714.8
	New cover panel with lateral cable entry <b>J</b>	4	01.147.574.8
	Liebert® CRV B300 T1200	1	CR0302XXX-XXXXXX
	Support bracket <b>A</b>	4	05.045.005.X
	Mounting bracket <b>B</b>	2	05.045.011.X
		8	05.045.012.X
	Center panel insert <b>C</b>	4	05.045.021.X
		4	05.045.022.X
	Transitional cover <b>D</b>	4	05.045.031.X
		4	05.045.032.X
	End panel insert <b>E</b>	1	05.045.041.X
		1	05.045.042.X
	Connecting panel insert <b>F</b>	2	05.045.045.X
Cover plate <b>G</b>	2	05.045.047.X	
Cross-cabling	Support bracket	1	05.045.052.X
		1	05.045.053.X
	Mounting bracket <b>B</b>	1	05.045.015.X
	Transitional cover <b>D</b>	2	05.045.032.X
	Cover <b>I</b>	1	05.045.057.X

### Required Data for Overhead Cabling

Width of racks in the rack suite (300, 600 or 800 mm)

### Example

Rack width (W) = 800 mm

Depth of racks in the rack suite (1000 to 1200 mm)

Rack depth (D) = 1200 mm

Number of racks in one rack suite

Aisle width (Standard dimensions 1200 and 1800 mm ± 50 mm) – for cross-cabling

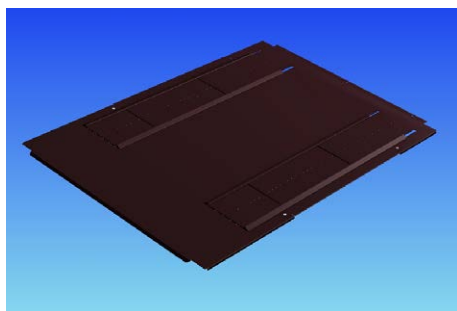
Aisle width (AW) = 1800 mm

Color light-grey RAL 7035 or dark-grey RAL 7021

Dark-grey RAL 7021



## Prerequisites for Overhead Cabling



DCM20079

### J Cover panel with lateral cable entry

- With lateral cable entry on both sides (sliding plates).
- For orderly cable management within the rack.
- Optional brush strips.

- **Material**

- Sheet steel, 1.5 mm.

- **Finish / Color**

- Final digit of order number .1: powder-coated, RAL 7035.
- Final digit of order number .8: powder-coated, RAL 7021.

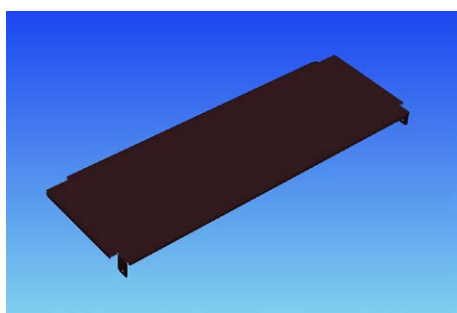
- **Scope of delivery**

- 1 Deckel mit seitlicher Kabeleinführung.
- Montagematerial.

- **How supplied**

- In sets.

W <sub>Rack</sub>	D <sub>Rack</sub>	For rack type	Order No.	UP
600	1000	Knürr™ MIR2 / Knürr DCM™	01.147.572.X	1 unit
600	1100	Knürr™ MIR2 / Knürr DCM™	01.147.573.X	1 unit
600	1200	Knürr™ MIR2 / Knürr DCM™	01.147.574.X	1 unit
800	1000	Knürr™ MIR2 / Knürr DCM™	01.147.577.X	1 unit
800	1100	Knürr™ MIR2 / Knürr DCM™	01.147.578.X	1 unit
800	1200	Knürr™ MIR2 / Knürr DCM™	01.147.579.X	1 unit



DCM20081

### K MIR2 / Knürr DCM™ cover panel short

- For covering the front overhead area; the rest remains open.
- Facilitates unobstructed cable entry inside the rack.

- **Material**

- Sheet steel, 1.5 mm.

- **Finish / Color**

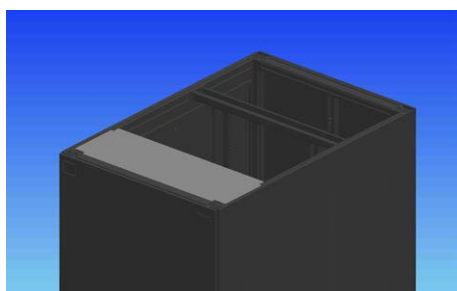
- Powder-coated texture, RAL 7021, dark-grey.

- **Scope of delivery**

- 1 x cover panel, short.
- 1 x Mounting kit.

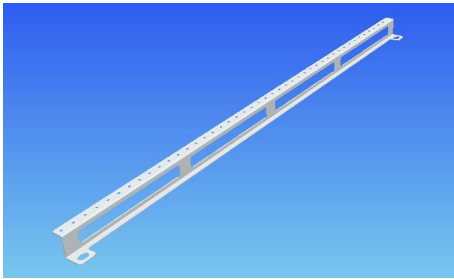
- **How supplied**

- In sets.

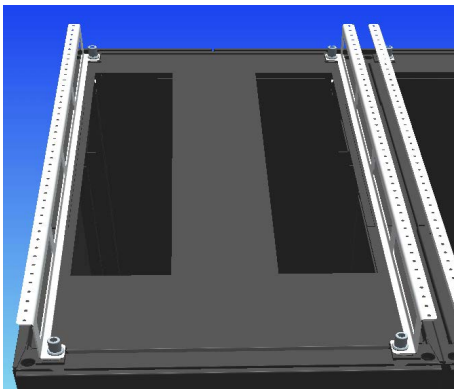


DCM20080

W <sub>Rack</sub>	L	For rack type	Order No.	UP
600	250	Knürr™ MIR2 / Knürr DCM™	01.147.268.8	1 unit
800	250	Knürr™ MIR2 / Knürr DCM™	01.147.269.8	1 unit



MEC20200



MEC20201

## A Support bracket

- Secures corner piece at the top of the rack.
- Quick and easy mounting.
- Suitable for both MIR2 and Knürr DCM™ racks.
- Includes screw for securing the mounting brackets, transitional cover and end panel inserts.

### • Material

- Sheet steel 2.0 mm.

### • Finish

- Final digit of order number .1: powder-coated, RAL 7035 light-grey.
- Final digit of order number .8: powder-coated, RAL 7021 dark-grey.

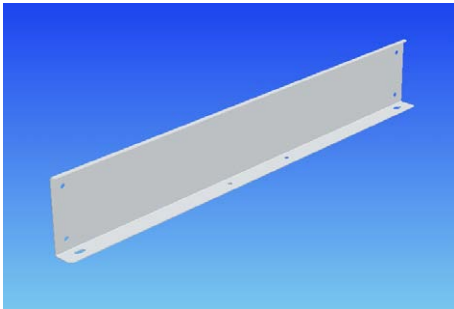
### • Scope of delivery

- 2 x support brackets.
- 1 x Mounting kit.

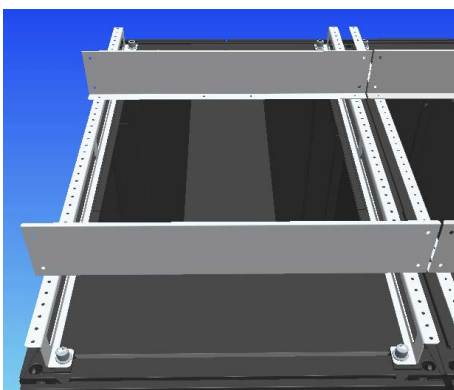
### • How supplied

- In sets.

H	D Rack	For rack type	Order No.	UP
44	1000	Knürr™ MIR2 / Knürr DCM™	05.045.003.X	1 set
44	1100	Knürr™ MIR2 / Knürr DCM™	05.045.004.X	1 set
44	1200	Knürr™ MIR2 / Knürr DCM™	05.045.005.X	1 set
44	1300	Knürr™ MIR2 / Knürr DCM™	05.045.001.X-001	1 set
44	1400	Knürr™ MIR2 / Knürr DCM™	05.045.001.X-002	1 set
44	1500	Knürr™ MIR2 / Knürr DCM™	05.045.001.X-003	1 set



MEC20202



MEC20203

## B Mounting brackets

- Secured on support bracket.
- Quick and easy mounting.
- Separate cable trays.

### • Material

- Sheet steel 1.0 mm.

### • Finish

- Final digit of order number .1: powder-coated, RAL 7035 light-grey.
- Final digit of order number .8: powder-coated, RAL 7021 dark-grey.

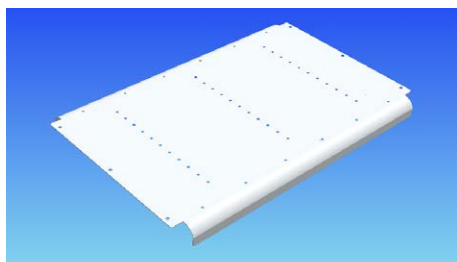
### • Scope of delivery

- 2 x mounting brackets.
- 1 x Mounting kit.

### • How supplied

- In sets.

W / L	H	For rack type	Order No.	UP
300	90	Knürr™ MIR2 / Knürr DCM™	05.045.011.X	1 set
600	90	Knürr™ MIR2 / Knürr DCM™	05.045.012.X	1 set
800	90	Knürr™ MIR2 / Knürr DCM™	05.045.013.X	1 set
2400	90	Knürr™ MIR2 / Knürr DCM™	05.045.015.X	1 set
3000	90	Knürr™ MIR2 / Knürr DCM™	05.045.016.X	1 set



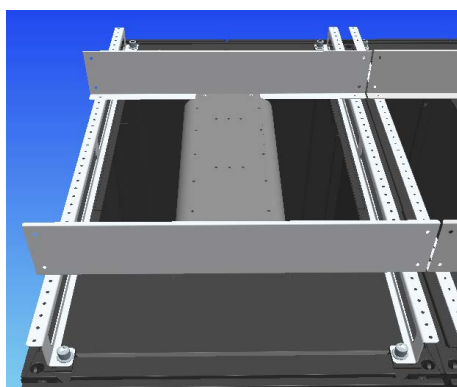
MEC20205

### C Center panel insert

- Secured on mounting bracket.
- Quick and easy mounting.
- With 25 mm radius for bending the cables.

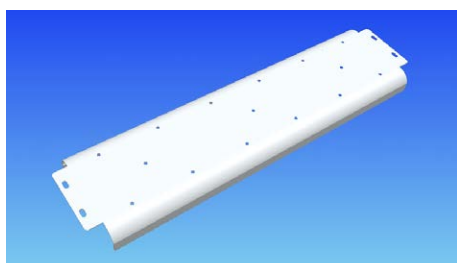
- **Scope of delivery**
  - 1 x center panel insert.
  - 1 x Mounting kit.
- **How supplied**
  - In sets.

- **Material**
  - Sheet steel, 1.5 mm.
- **Finish**
  - Final digit of order number .1: powder-coated, RAL 7035 light-grey.
  - Final digit of order number .8: powder-coated, RAL 7021 dark-grey.



MEC20204

W / L	W <sub>Rack</sub>	R	For rack type	Order No.	UP
200	600	25	Knürr™ MIR2 / Knürr DCM™	05.045.021.X	1 set
600	600	25	Knürr™ MIR2 / Knürr DCM™	05.045.022.X	1 set
200	800	25	Knürr™ MIR2 / Knürr DCM™	05.045.023.X	1 set
600	800	25	Knürr™ MIR2 / Knürr DCM™	05.045.024.X	1 set



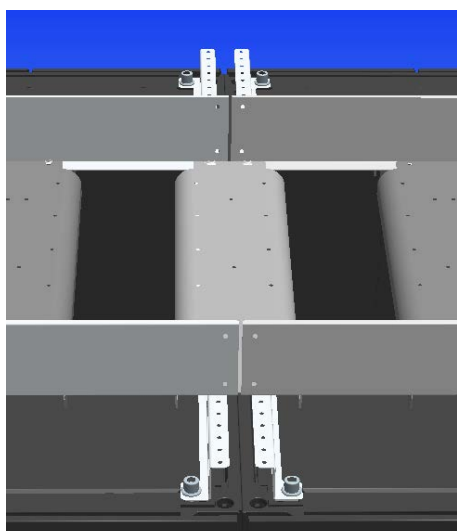
MEC20206

### D Transitional cover from rack to rack

- Secured on support bracket.
- Quick and easy mounting.
- With 25 mm radius for bending the cables.

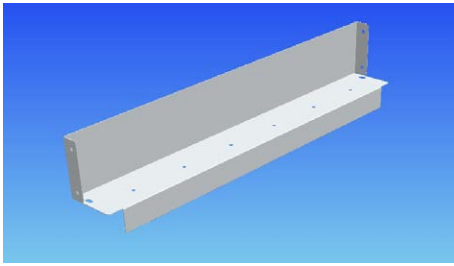
- **Scope of delivery**
  - 1 x transitional cover.
  - 1 x Mounting kit.
- **How supplied**
  - In sets.

- **Material**
  - Sheet steel, 1.5 mm.
- **Finish**
  - Final digit of order number .1: powder-coated, RAL 7035 light-grey.
  - Final digit of order number .8: powder-coated, RAL 7021 dark-grey.



MEC20212

W / L	R	For rack type	Order No.	UP
200	25	Knürr™ MIR2 / Knürr DCM™	05.045.031.X	1 set
600	25	Knürr™ MIR2 / Knürr DCM™	05.045.032.X	1 set



MEC20207

## E End panel insert

- Secured on support bracket.
- Quick and easy mounting.
- Completes cable trays.

### • Material

- Sheet steel 1.0 mm.

### • Finish

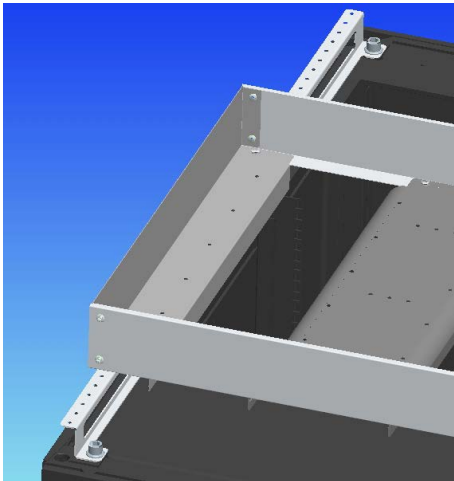
- Final digit of order number .1:  
powder-coated, RAL 7035 light-grey.
- Final digit of order number .8:  
powder-coated, RAL 7021 dark-grey.

### • Scope of delivery

- 2 x end panel inserts.
- 1 x Mounting kit.

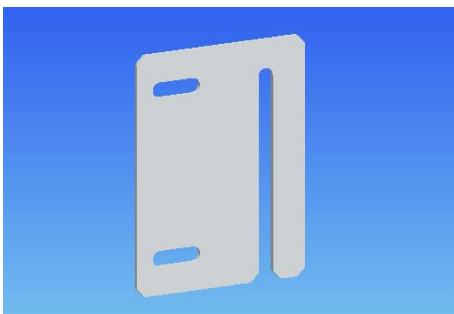
### • How supplied

- In sets.



MEC20214

W / L	For rack type	Order No.	UP
200	Knürr™ MIR2 / Knürr DCM™	05.045.041.X	1 set
600	Knürr™ MIR2 / Knürr DCM™	05.045.042.X	1 set



MEC20208

## F Connecting panel insert

- For joining mounting brackets.
- Quick and easy mounting.

### • Material

- Sheet steel, 1.5 mm.

### • Finish

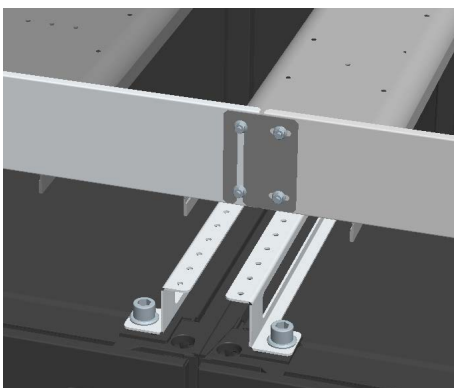
- Final digit of order number .1:  
powder-coated, RAL 7035 light-grey.
- Final digit of order number .8:  
powder-coated, RAL 7021 dark-grey.

### • Scope of delivery

- 10 x connecting panel inserts.
- 1 x Mounting kit.

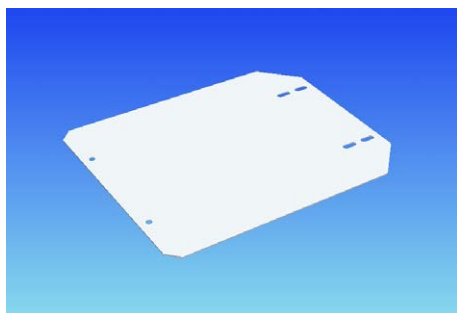
### • How supplied

- In sets.



MEC20213

W	H	For rack type	Order No.	UP
64	86	Knürr™ MIR2 / Knürr DCM™	05.045.045.X	1 set



MEC20209

## G Cover plate

- For covering the space between the center panel inserts and transitional covers.

- Quick and easy mounting.

- **Material**

- Sheet steel 1.0 mm.

- **Finish**

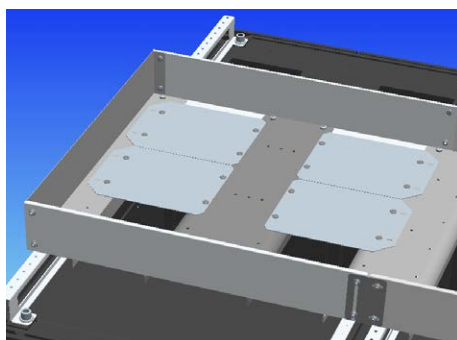
- Final digit of order number .1: powder-coated, RAL 7035 light-grey.
- Final digit of order number .8: powder-coated, RAL 7021 dark-grey.

- **Scope of delivery**

- 10 x cover plates.
- 1 x Mounting kit.

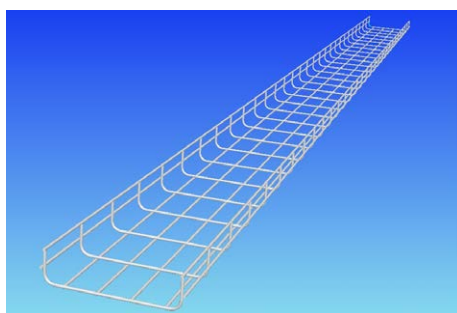
- **How supplied**

- In sets.



MEC20215

L	W	For rack type	Order No.	UP
229	183	Knürr™ MIR2 / Knürr DCM™	05.045.047.X	1 set



MEC20218

## Option Mesh cable tray

- Secured on support bracket.

- Quick and easy mounting.

- **Material**

- Round steel, d = 4.5 mm.

- **Finish**

- Zinc-passivated.

- **Scope of delivery**

- 1 x mesh cable tray.
- 1 x Mounting kit.

- **How supplied**

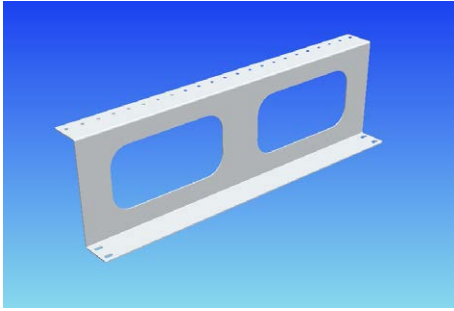
- In sets.

B	L	H	For rack type	Order No.	UP
200	3000	54	Knürr™ MIR2 / Knürr DCM™	05.045.061.9	1 set
600	3000	54	Knürr™ MIR2 / Knürr DCM™	05.045.062.9	1 set

### Dimensions in mm:

W = Width	h = Installation height	U = Standard rack unit	kg = Weight	1 mm = 0.03937 inch
H = Height	d = Insertion depth	(1 U = 44.45 mm)		1 kg = 2.2046 pounds
D = Depth	L = Length	UP = Packaging unit		

### Conversion:



MEC20210

## H Support bracket cross-cabing

- For cable management at the top between rack suites.
- Quick and easy mounting.
- Includes screw for securing the mounting brackets, transitional covers and cover plates.

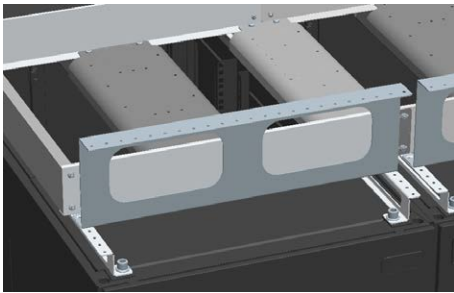
- **Scope of delivery**
  - 2 x support brackets, cross-cabing.
  - 1 x Mounting kit.
- **How supplied**
  - In sets.

- **Material**

- Sheet steel 2.0 mm.

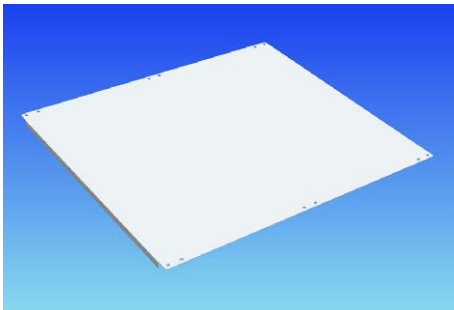
- **Finish**

- Final digit of order number .1: powder-coated, RAL 7035 light-grey.
- Final digit of order number .8: powder-coated, RAL 7021 dark-grey.



MEC20216

H	W <sub>Rack</sub>	For rack type	Order No.	UP
166	600	Knürr™ MIR2 / Knürr DCM™	05.045.052.X	1 set
166	800	Knürr™ MIR2 / Knürr DCM™	05.045.053.X	1 set



MEC20211

## I Cross-cabing cover

- Provides support for cables and covers the space between the rack suites.
- Secured on mounting bracket.
- Quick and easy mounting.

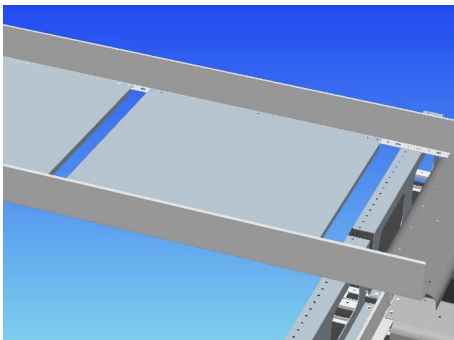
- **Scope of delivery**
  - 5 x cover plates.
  - 1 x Mounting kit.
- **How supplied**
  - In sets.

- **Material**

- Sheet steel 1.0 mm.

- **Finish**

- Final digit of order number .1: powder-coated, RAL 7035 light-grey.
- Final digit of order number .8: powder-coated, RAL 7021 dark-grey.



MEC20217

L	W	For rack type	Order No.	UP
200	200	Knürr™ MIR2 / Knürr DCM™	05.045.055.X	1 set
200	600	Knürr™ MIR2 / Knürr DCM™	05.045.056.X	1 set
600	600	Knürr™ MIR2 / Knürr DCM™	05.045.057.X	1 set



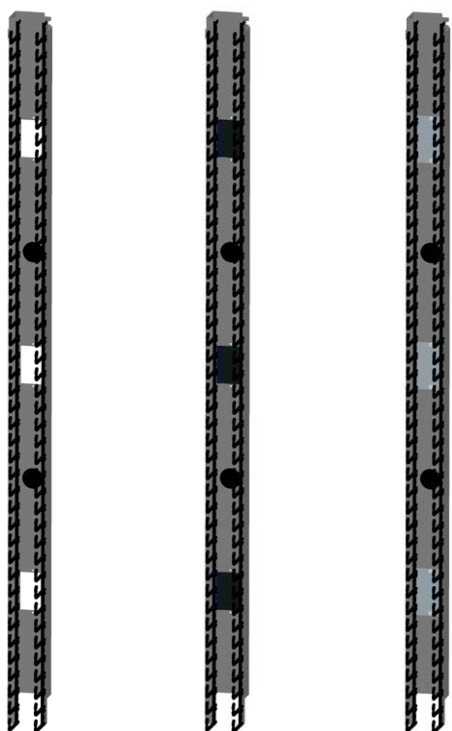
## Vertiv™ Knürr™ Cable Management

### • Features

- Organized cabling of jumper cables.
- Suitable depends on the model, for 19" Vertiv™ Knürr DCM™ and MIR2 Racks.
- Also available optionally as cold/warm partitioning.
- Cutouts for cabling from front to back.
- Lightweight plastic construction of the cable fingers ensures durability and simple installation (clip-on).
- Distance between fingers provides sufficient space for all patch cords.
- Rounded edges on the fingers protect cables against damage.

## Vertiv™ Knürr™ Cable Management

- **Type 1:** Standard (open cutouts).
- **Type 2:** Version with brush strips in cutouts for cable routing towards the rear.
- **Type 3:** Version with sheet-steel cover plates in cutouts as part of the cold/warm partitioning.



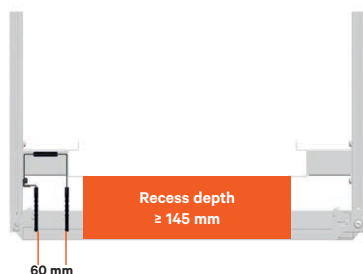
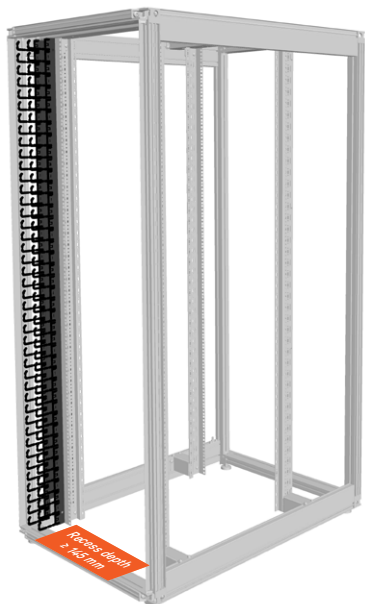
Type 1

Type 2

Type 3

## Technical data and required recess depths

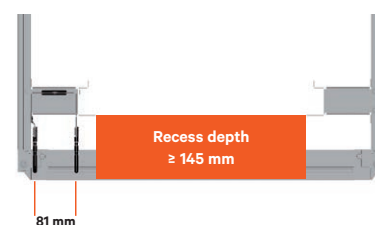
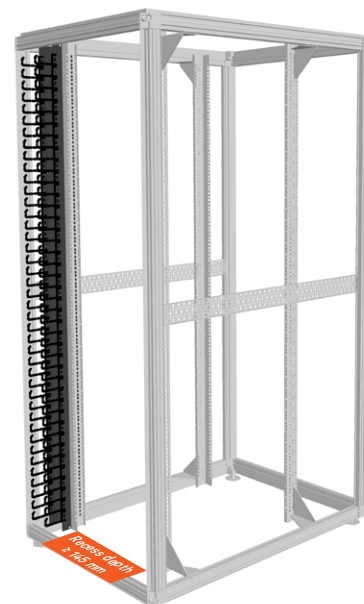
### Vertiv™ Knürr DCM™

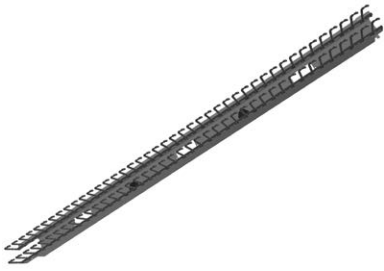


### Vertiv™ Knürr DCM™



### Vertiv™ Knürr™ MIR2





DCM20118



DCM20119

## Vertiv™ Knürr DCM™ cable manager, vertical

### Description

- Left and right models (2 cable managers) included in the delivery.
- Ideal for organizing cabling of jumper cables (copper and fiber optic cables).
- Retrofitting is possible.
- Prepared for full cold/warm partitioning.
- Cable fingers can be easily installed (clipped on).
- Cabling towards the rear through rubber bushings or cutouts.
- Can be used for recess depths from 145 mm.

### Material / Finish

- Cable duct: Sheet steel, 2.0 mm.
- Final digit of order number .1: powder-coated, RAL 7035 light-grey

- Final digit of order number .8: powder-coated, RAL 7021 dark-grey.
- Cable fingers: Polyamide (UL 94 V-0), black.

### Scope of delivery

- 1 x cable duct, left.
- 1 x cable duct, right.
- 4 x rows with cable fingers.
- 4 x rubber bushings.
- 1 x Mounting kit.

### How supplied

- In pairs (cable fingers unassembled).

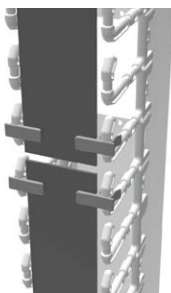
### Remarks

- Only for Knürr DCM™ Rack.

W <sub>Rack</sub>	H <sub>Rack</sub>	U	Recess depth	Cutout size	Order No.	UP
800	2000	42	Starting from 145 mm	66 x 100 mm	<b>05.045.102.X</b>	1 pair
800	2200	47	Starting from 145 mm	66 x 100 mm	<b>05.045.103.X</b>	1 pair



DCM20120



DCM20121

## Vertiv™ Knürr DCM™ cover panel for vertical cable manager

– For only 1 cable manager, i. e., 2 kits required for B800 rack.

- Covers the vertical cable manager.
- Tool-less fastening – clips onto cable finger.
- Can be swiveled on both sides and removed completely.

### Material / Finish

- Cover: sheet steel, 2.0 mm.
- Final digit of order number .1: powder-coated, RAL 7035 light-grey.

- Final digit of order number .8: powder-coated, RAL 7021 dark-grey.
- Clip: polyamide (UL 94 V-0), black.

### Scope of delivery

- 2 x covers.
- 8 x clips.

### How supplied

- In sets (clips pre-assembled).

W	H	U	Order No.	UP
58	927	42	<b>05.045.112.X</b>	1 set
58	1038	47	<b>05.045.113.X</b>	1 set

## Knürr DCM™/Knürr™ MIR2 kit for air partitioning for vertical cable manager



DCM20117

- Suitable for Knürr DCM™ and MIR2 racks.
- Separates the cold and hot areas with in the rack.
- Prevents hot-spots (air recirculation).

### • Material / Finish

- Bottom plate, cover plate: sheet steel, 1.0 mm.
- Final digit of order number .1: powder-coated, RAL 7035 light-grey.
- Final digit of order number .8: powder-coated, RAL 7021 dark-grey.
- High-density foam: PUR foam (UL94 HF-1).

### • Scope of delivery

- 1 x bottom plate.
- 6 x Steel plate cover plates (extension to Type3) for cable routing.
- 1 x Foam element, side.
- 1 x Foam element, top.
- 1 x Mounting kit.

### • How supplied

- In sets.

### • Remarks

- For Knürr DCM™ and Knürr™ MIR2 Rack.

$W_{\text{Rack}}$	U	Order No.	UP
800	42 and 47	05.045.132.X	1 set

## Vertiv™ Knürr™ MIR2 – Cable Manager, Vertical

### Left and right models (2 cable managers) included in the delivery.

Ideal for organizing cabling of jumper cables (copper and fiber optic cables).

- Retrofitting is possible.
- Prepared for full cold/warm partitioning.
- Cable fingers can be easily installed (clipped on).
- Cabling towards the rear through rubber bushings or cutouts.

### Can be used for recess depths from 145 mm.

### • Material / Finish

- Cable duct: Sheet steel, 2.0 mm.
- Final digit of order number .1: powder-coated, RAL 7035 light-grey.
- Final digit of order number .8: powder-coated, RAL 7021 dark-grey.

- Cable fingers: Polyamide (UL 94 V-0), black.

### • Standard inclusion

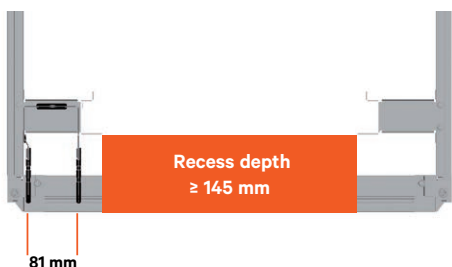
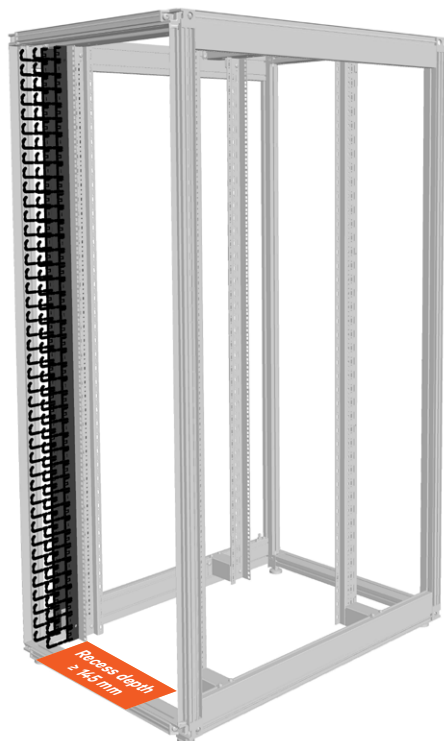
- 1 x cable duct, left.
- 1 x cable duct, right.
- 4 x rows with cable fingers.
- 4 x rubber bushings.
- 1 x Mounting kit.

### • Delivery

- In pairs (cable fingers unassembled).

### • Note

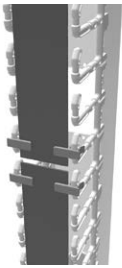
For MIR2 only.  
Only front mountable.



$W_{\text{Rack}}$	$H_{\text{Rack}}$	U	Recess depth	Cutout size	Order No.	UP
800	2000	42	Starting from 145 mm	81 x 100 mm	05.045.152.X	1 pair
800	2200	47	Starting from 145 mm	81 x 100 mm	05.045.153.X	1 pair



DCM20120



DCM20121

## Vertiv™ Knürr™ MIR2 – Cover Panel for Vertical Cable Manager

**For only 1 cable manager, i. e., 2 kits required for B800 rack.**

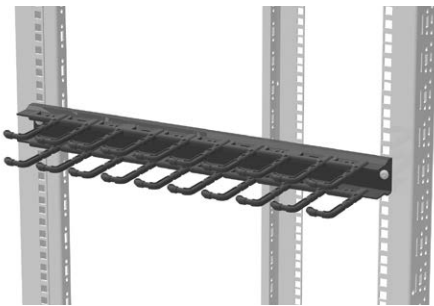
- Covers the vertical cable manager.
- Tool-less fastening – clips onto cable finger.
- Can be swiveled on both sides and removed completely.

### • Material / Finish

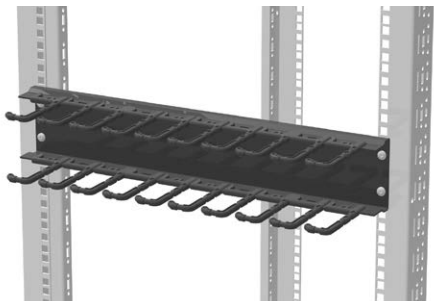
- Cover: sheet steel, 2.0 mm.
- Final digit of order number .1: powder-coated, RAL 7035 light-grey.
- Final digit of order number .8: powder-coated, RAL 7021 dark-grey.

- Clip: polyamide (UL 94 V-0), black.
- **Standard inclusion**
  - 2 x covers.
  - 8 x clips.
- **Delivery**
  - In sets (clips pre-assembled).
- **Note**  
For MIR2 only.

W	H	D	U	Order No.	Up
79	916		42	05.045.114.x	1 set
79	1027		47	05.045.115.x	1 set



DCM20112



DCM20114

## Knürr™ MIR2 / Knürr DCM™ 19" cable manager, horizontal

### • Description

- 1 U and 2 U models.
- For organized cabling of jumper cables (copper and fiber optic cables).
- Front-mounting on 19" extrusions.
- Cable fingers can be easily installed (clipped on).
- Can be used for recess depths from 145 mm.

### • Material / Finish

- Cable duct: sheet steel, 2.0 mm.
- Final digit of order number .1: powder-coated, RAL 7035 light-grey.
- Final digit of order number .8: powder-coated, RAL 7021 dark-grey.
- Cable fingers: polyamide (UL 94 V-0), black.

### • Scope of delivery

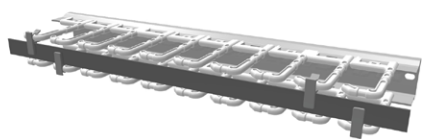
- 1 x cable duct.
- 2 x rows with cable fingers.
- 1 x Mounting kit.

### • How supplied

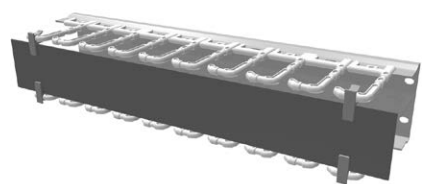
- In sets (cable fingers unassembled).

W	U	Recess depth	Order No.	UP
483	1	Starting from 145 mm	05.045.120.X	1 unit
483	2	Starting from 145 mm	05.045.122.X	1 unit

## Knürr™ MIR2 / Knürr DCM™ Cover for 19" horizontal cable manager



DCM20113



DCM20115

- Covers the horizontal cable managers.
- Tool-less fastening – clips onto cable finger.
- Can be swiveled on both sides and removed completely.

### Material / Finish

- Cover: sheet steel, 2.0 mm.
- Final digit of order number .1: powder-coated, RAL 7035 light-grey.
- Final digit of order number .8: powder-coated, RAL 7021 dark-grey.
- Clip: polyamide (UL 94 V-0), black.

### Scope of delivery

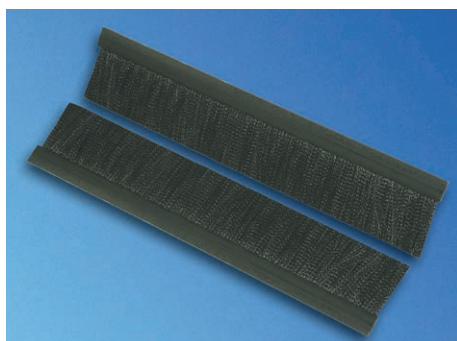
- 1 x cover.
- 4 x clips.

### How supplied

- In sets (clips pre-assembled).

W	H	U	Order No.	UP
483	20	1	05.045.121.x	1 set
483	65	2	05.045.123.x	1 set

## Knürr™ MIR2 / Knürr DCM™ Brush strips for vertical cable manager (Type2)



MIR20093

- Upgrade kit for vertical cable manager for routing cables toward the rear (for extension to Type 2).
- Inserted in openings in cable duct (1 pair of brushes per opening).

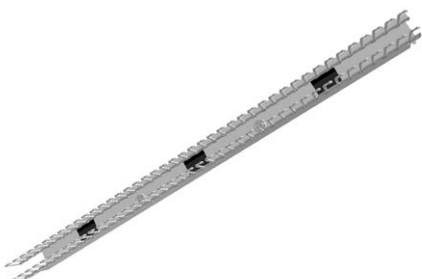
### Scope of delivery

- 3 x pairs of brushes (length: 99 mm).

### How supplied

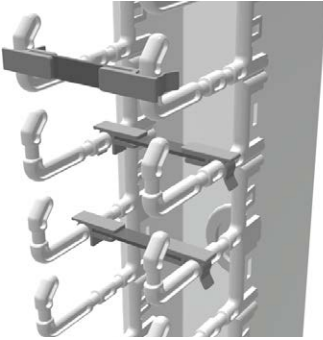
- In sets.

L	for cutouts	Order No.	UP
99	66 x100 mm	05.045.130.9	1 set



DCM20122

W <sub>Rack</sub>	H <sub>Rack</sub>	U	Recess depth	Cutout size	Order No.	UP
800	2000	42	Starting from 145 mm	81 x 100 mm	05.045.152.X	1 pair
800	2200	47	Starting from 145 mm	81 x 100 mm	05.045.153.X	1 pair



DCM20116

## Knürr DCM™ kit for cascading; vertical cable manager

- Separates individual cable groups.
- Tool-less fastening – clips onto cable finger.
- Protects the cables and can be used for labeling.

- **Material / Finish**

- Cascade: sheet steel, 2.0 mm.

- Powder-coated texture, RAL 7021 dark-grey.
- Clip: polyamide (UL 94 V-0), black.

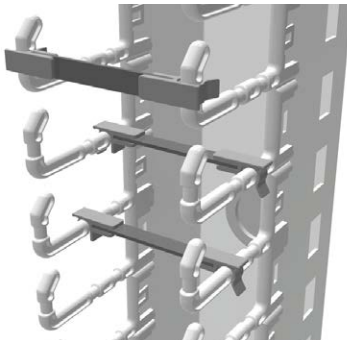
- **Scope of delivery**

- 10 x cascades.
- 20 x clips.

- **How supplied**

- In sets (clips pre-assembled).

W	H	Order No.	UP
55	10	05.045.136.8	1 unit



MIR20454

## MIR2 kit for cascading; vertical cable manager

- For separating individual cable groups.
- Tool-less fastening – clips onto cable finger.
- Protects the cables and can be used for labeling.

- **Material / Finish**

- Cascade: sheet steel, 2.0 mm.

- Powder-coated texture, RAL 7021 dark-grey.
- Clip: polyamide (UL 94 V-0), black.

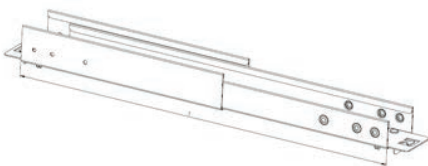
- **Scope of delivery**

- 10 x cascades.
- 20 x clips.

- **How supplied**

- In sets (clips pre-assembled).

W	H	Order No.	UP
76	10	05.045.137.8	1 set



## Horizontal Cable Manager Side Channel

- **Description**

- For organized cabling from the front to the rear of the Rack
- Mounting on the vertical cable manager and on the 19" rails possible
- Depth adjustable from 565 – 750mm

- **Material / Finish**

- Cable duct: sheet steel 1,5 mm

- Final digit of order number 1: powder-coated, RAL 7035 light grey.
- Final digit of order number .8: powder-coated, RAL 7021 dark grey

- **Scope of delivery**

- 1 x cable duct adjustable
- 2 x mounting adapter
- 1 x mounting kit

- **How supplied**

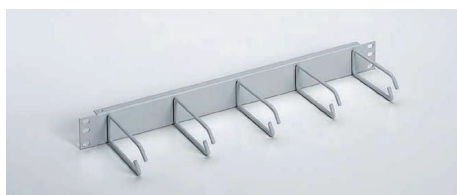
- In sets (cable fingers unassembled)

d insertion depth	H x W	Order No.	UP
565-750	52.5 x 73	05.045.145.X	1 unit

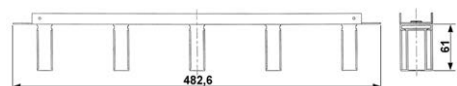




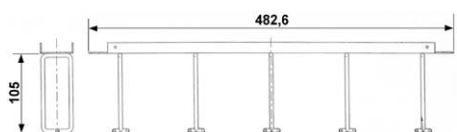
MEC00110 - Type 1



MEC20014 - Type 2



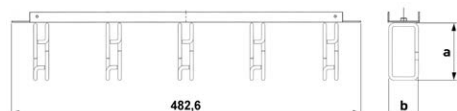
MEC20103 - Type 1



MEC20104 - Type 2



MEC20041



MEC20102



MEC20076

## 19" cable routing board 1 U

- For orderly cable routing.
- Enables safe and secure cable routing of copper and fiberglass cables.

- **Material / Finish**

- **Type 1:**  
Front plate, sheet steel, 1.5 mm, powder coated.
- **Type 2:**  
Front plate, sheet steel, 1.0 mm, powder coated.

- **Color**

- Final digit of order number .1:  
RAL 7035, light grey.
- Final digit of order number .8:  
RAL 7021 dark-grey.

- **External dimensions**

- **Cable routing:**

- Type 1: 55 x 22 mm, plastic.
- Type 2: 95 x 32 mm, steel.

- **Scope of delivery**

- 1 x 19" front plate.
- 5 x cable routers.

- **How supplied**

- Pre-assembled

- **Note**

Please also order mounting material for front plates.

W	U	Jumpering space	Model	Order No.	UP
483	1	from 80 mm	Type 1	05.040.111.1	1 unit
483	1	from 80 mm	Type 1	05.040.111.X	1 unit
483	1	from 123 mm	Type 2	01.117.144.X	1 unit

## 19" cable routing board, flexible, 1 U

- For orderly cable routing.
- Enables safe and secure cable routing of copper and fiberglass cables.

- **Material / Finish**

- Front plate, sheet steel, 1.5 mm, powder coated.
- Cable routing bracket, round steel, d = 5 mm, zinc-passivated.

- **Color**

- Final digit of order number .1:  
RAL 7035, light grey.
- Final digit of order number .8:  
RAL 7021 dark-grey.

- **External dimensions**

Cable routers (a x b):

- 1 U: 82 x 43 mm.
- 2 U: 102 x 82 mm.

- **Scope of delivery**

- 1 x front plate.
- 5 x cable routing boards.

- **How supplied**

- Pre-assembled.

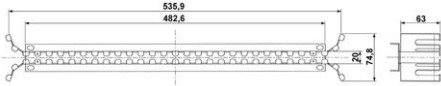
- **Note**

Please also order mounting material for front plates.

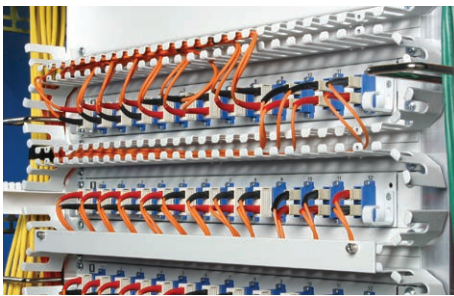
W	U	Jumpering space	Model	Order No.	UP
483	1	from 100 mm	Type 1	05.040.100.X	1 unit
483	2	from 120 mm	Type 2	05.040.101.X	1 unit



MEC20081



MEC20105



MEC20058



MEC20049



MEC20063

## Fiber optic cable routing panel 1U

- For orderly cable routing.
- Enables safe and secure cable routing of fiber optic cables.
- Optionally with cover plates to protect the cables and can be used for labeling.

### Material / Finish

- Fiber optic cable routing panel: Sheet steel 1.5mm, powder-coated texture.
- Cover Accessories: Aluminium 2.5mm, powder-coated texture.

### Color

- Final digit of order number .1: RAL 7035, light grey.
- Final digit of order number .8: RAL 7021 dark-grey.

### Scope of delivery

- 1 x 19" cable routing board.

### How supplied

- Single items.

### Note

Please also order mounting material for front plates and cover.  
Not suitable for rack widths of 600 mm and 700 mm (asymmetrical).

W	U	Model	Order No.	UP
483	1	Cable routing board	05.040.050.1	1 unit
483	1	Cable routing board	05.040.050.X	1 unit
		Accessories: cover	05.040.051.X	1 unit

## 19" cable through

- For organized cable management at the 19" front plate.
- Mounting possible on front plates.
- Cables can be fastened with Velcro.

### Material / Finish

- Sheet steel, 1.5 mm, powder-coated texture.

### Color

- Final digit of order number .1: RAL 7035, light grey.
- Final digit of order number .8: RAL 7021 dark-grey.

### Scope of delivery

- 1 x cable through.

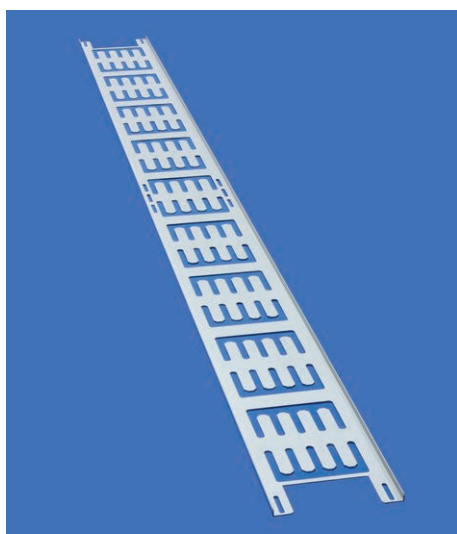
### How supplied

- Single items.

### Note

Please also order mounting material for front plates and Velcro rolls.

W	D	U	Order No.	Up
483	100	1	05.040.055.X	1 unit



MEC20224

## Cable trough

- For orderly cable management in the MIR2 and Knürr DCM™ racks.
- Cables secured with Velcro strips or cable ties.
- 9 mm slit width for securing various parts to caged nuts.

- **Material / Finish**

- Sheet steel, 1.5 mm, zinc passivated, powder-coated.

- **Color**

- Final digit of order number .1: RAL 7035 light grey.

- Final digit of order number .8: RAL 7021, dark-grey.

- **Scope of delivery**

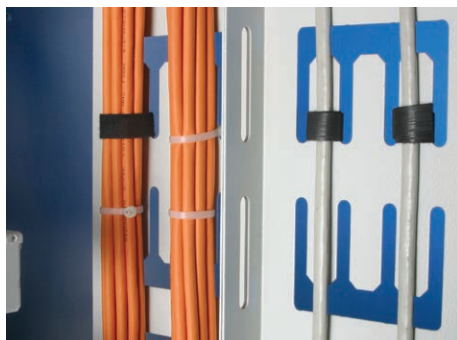
- 1 x cable trough.
- 1 x Mounting kit.

- **How supplied**

- In sets.

- **Note**

If required, please also order Velcro rolls.



MEC20067

H	w	Model	Order No.	UP
2000	100	For Knürr™ MIR2 and Knürr DCM™ racks	05.040.251.X	1 set
2200	100	For Knürr™ MIR2 and Knürr DCM™ racks	05.040.252.X	1 set
2000	150	For Knürr™ MIR2 and Knürr DCM™ racks	05.040.254.X	1 set
2200	150	For Knürr™ MIR2 and Knürr DCM™ racks	05.040.255.X	1 set
2000	200	For Knürr™ MIR2 and Knürr DCM™ racks	05.040.257.X	1 set
2200	200	For Knürr™ MIR2 and Knürr DCM™ racks	05.040.258.X	1 set



MEC00114

## Cable clamping bar

- Clips onto the C extrusion rail.

- **Material**

- Polyamide, black.

- **Scope of delivery**

- 1 set of 10 cable clamping bars.

- **How supplied**

- In sets.

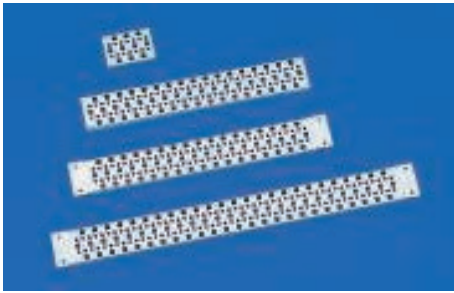
Order No.	Up
01.130.869.9	10 unit

### Dimensions in mm:

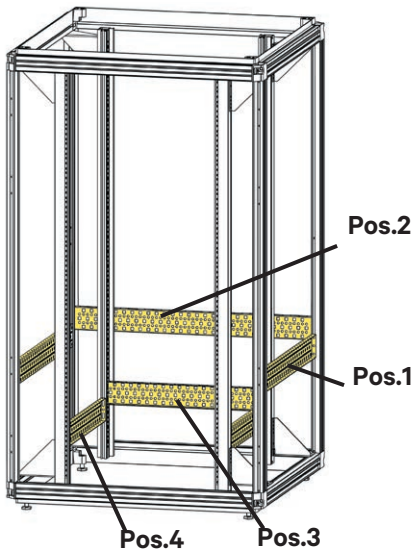
W = Width	h = Installation height	U = Standard rack unit	kg = Weight	1 mm = 0.03937 inch
H = Height	d = Insertion depth	(1 U = 44.45 mm)		1 kg = 2.2046 pounds
D = Depth	L = Length	UP = Packaging unit		

### Conversion:

= assemble to order (shipped within 5 working days).  
Caution: In case of larger orders, delivery times may increase.



MIR00089



MIR88003

## Multifunctional brace

- For routing cables with cable ties.
- For universal mounting option.
- Holes for mounting caged nuts.
- Distance between two multifunctional braces can be selected using T-slot.
- Installation on the extrusions of the rack frame or on the 19" extrusions, diagonal and lateral.

### Installation positions

- 1 toward rear of basic frame.
- 2 across width of basic frame.
- 3 across width of 19" extrusions.
- 4 toward rear of 19" extrusions.

### Material

- Sheet steel 1.5 mm.

### Finish

- Zinc-passivated.

### Scope of delivery

- 4 x multifunctional braces.

### How supplied

- In sets.

### Remark

- Pos. 4 fits only with LAN or T-Nut 19" extrusion.

D <sub>Rack</sub>	d	Installation position	For rack type	Order No.	UP
600	1		Knürr™ MIR2 / Knürr DCM™	05.040.160.9	4 units
800	1		Knürr™ MIR2 / Knürr DCM™	05.040.161.9	4 units
900	1		Knürr™ MIR2 / Knürr DCM™	05.040.162.9	4 units
1000	1		Knürr™ MIR2 / Knürr DCM™	05.040.163.9	4 units
1100	1		Knürr™ MIR2 / Knürr DCM™	05.040.164.9	4 units
1200	1		Knürr™ MIR2 / Knürr DCM™	05.040.165.9	4 units
600	2		Knürr™ MIR2 / Smaract™	05.040.173.9	4 units
800	2		Knürr™ MIR2	05.040.174.9	4 units
	3		MIR2 / Knürr DCM™ / Smaract™ / DPR	05.040.175.9	4 units
600	365	4	Knürr™ MIR2 / Smaract™	05.040.168.9	4 units
800	565	4	Knürr™ MIR2 / Smaract™	05.040.169.9	4 units
600	440	4	Knürr™ MIR2 / Smaract™	05.040.170.9	4 units
800	640	4	Knürr™ MIR2 / Smaract™	05.040.171.9	4 units
900	740	4	Knürr™ MIR2 / Smaract™	05.040.172.9	4 units
1000	740	4	Knürr™ MIR2 / Smaract™	05.040.172.9	4 units
300	1		Extension Kit 300 mm	05.040.160.9-001	4 units

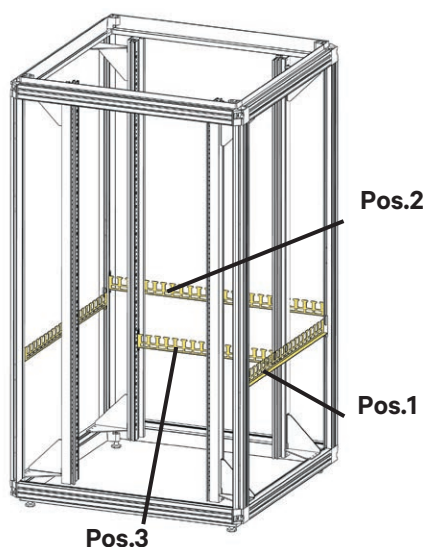




MEC20091



MEC20078



MIR88001

## Cable routing brace

- Fitted to the Knürr MIR2 / Knürr DCM™ / Smaract™ basic frame and the 19" extrusion.
- Cables fastened using Velcro and cable ties.
- For organized cable management within the rack.
- Two-sided installation.
- Provides universal mounting using caged nuts (all dimensions can be accommodated; caged nuts are flexible).

- **Material**
  - Sheet steel, 1.5 mm.
- **Finish**
  - Zinc-passivated.
- **Scope of delivery**
  - 4 x cable routing braces.
  - 1 x Mounting kit.
- **How supplied**
  - Single items.
- **Note**

If required, please also order Velcro rolls .

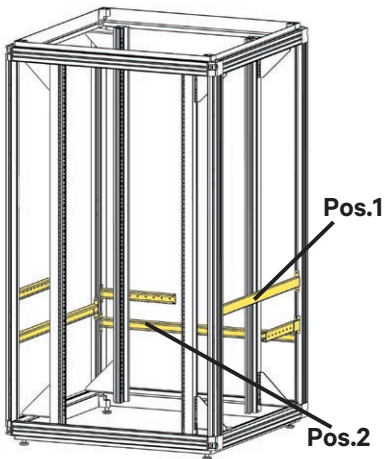
D	L	Model	For rack type	Order No.	UP
600	455	Pos. 1	Knürr™ MIR2 / Knürr DCM™	<b>05.040.200.9</b>	4 units
800	655	Pos. 1	Knürr™ MIR2 / Knürr DCM™	<b>05.040.201.9</b>	4 units
900	755	Pos. 1	Knürr™ MIR2 / Knürr DCM™	<b>05.040.202.9</b>	4 units
1000	855	Pos. 1	Knürr™ MIR2 / Knürr DCM™	<b>05.040.203.9</b>	4 units
1200		Pos. 1	Knürr™ MIR2 / Knürr DCM™	<b>05.040.205.9</b>	4 units
	534	Pos. 2	Smaract™	<b>05.040.213.9</b>	4 units
	468	Pos. 3	Smaract™ / DPR	<b>05.040.215.9</b>	4 units
300	193,5	Pos. 1	Extension Kit 300 mm	<b>05.040.200.9-001</b>	4 units

### Dimensions in mm:

W = Width	h = Installation height	U = Standard rack unit	kg = Weight	1 mm = 0.03937 inch
H = Height	d = Insertion depth	(1 U = 44.45 mm)		1 kg = 2.2046 pounds
D = Depth	L = Length	UP = Packaging unit		



MEC00113



MIR88004

## C extrusion rail

- Cables secured with U-clamps or cable clamping bars.
- Space-saving installation between the extrusions on the basic rack.
- Two-sided installation.

### Material

- Sheet steel, 1.5 mm, zinc-passivated.

### Finish

- Zinc-passivated.

### Scope of delivery

- 4 x extrusion rails.
- 1 x Mounting kit.

### How supplied

- In sets.

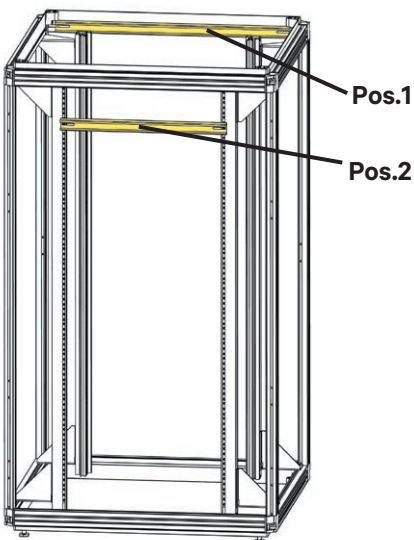
### Note

Please also order U-clamps, cable clamping bars or threaded plates.

D	W	Installation position	For rack type	Order No.	UP
800		1	Knürr™ MIR2 / Knürr DCM™	05.040.181.9	4 units
900		1	Knürr™ MIR2 / Knürr DCM™	05.040.182.9	4 units
1000		1	Knürr™ MIR2 / Knürr DCM™	05.040.183.9	4 units
1200		1	Knürr™ MIR2 / Knürr DCM™	05.040.185.9	4 units
	600	2	Smaract™	05.040.193.9	4 units
	800	2	Knürr™ MIR2	05.040.194.9	4 units
300		1	Extension Kit 300 mm	05.040.180.9-001	4 units



MIR00096



MIR88002

## C extrusion rail

- Cables secured with U-clamps or cable clamping bars.
- Cable clamping close to entry point (type 1).
- Suitable for use with cover panel including cable entry.

### Material

- Sheet steel, 1.5 mm, zinc-passivated.

### Scope of delivery

- 1 x C extrusion rails.
- 1 x Mounting kit.

### How supplied

- In sets.

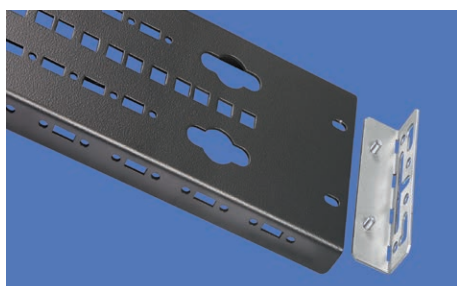
### Note

Please also order U-clamps, cable clamping bars or threaded plates.

W	L	Model	Order No.	UP
600	482.5	Pos 1: Knürr™ MIR2 / Knürr DCM™	05.040.080.0	1 unit
800	682.5	Pos 1: Knürr™ MIR2 / Knürr DCM™	05.040.082.0	1 unit
19"	482.5	Pos 2: Knürr™ MIR2 / Knürr DCM™ / Smaract™ / Double ProRack	01.110.719.9	1 unit



DCM20077



DCM20076

## Vertiv™ Knürr™ MIR2 / Vertiv™ Knürr DCM™ PDU Bracket

- For orderly cable management in the rack.
- For hanging in trade-standard PDUs without tools.
- Especially suited to Geist™ PDUs and Liebert® PDUs.

- **Material / Finish**

- Steel sheet, 1.5 mm, zinc passivated, powder-coated.

- **Color**

- Final digit of order number .1: RAL 7035 light-grey.
- Final digit of order number .8: RAL 7021 dark-grey.

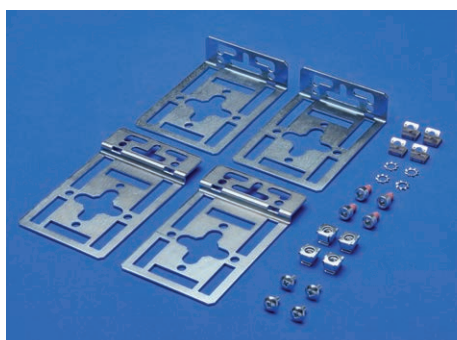
- **Scope of delivery**

- 1 x PDU bracket.
- 1 x Mounting kit.

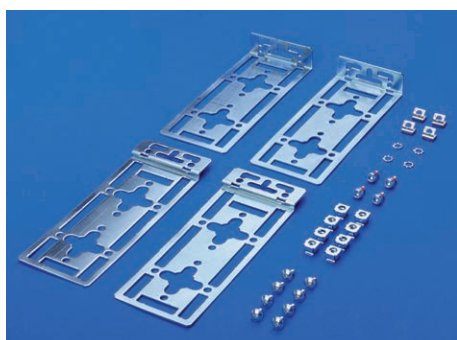
- **How supplied**

- In sets.

W	H <sub>Rack</sub>	D	U	Order No.	UP
125	2000	25	42	01.147.816.X	1 unit
125	2200	25	47	01.147.817.X	1 unit



MEC20222 Type 1



MEC20223 Type 2

## PDU mounting kit

- For securing various rack PDUs.
- Suitable for Knürr™ MIR2 and Knürr DCM™ racks.
- For installing 1 or 2 PDUs.
- Installation options are described in the "Installation instructions for PDUs" manual.

- **Material / Finish**

- Sheet steel, 2 mm, zinc passivated.

- **Scope of delivery**

- 2 x L mounting brackets.
- 2 x angular mounting brackets.
- 1 x Mounting kit.

- **How supplied**

- In sets.

Model	For rack type	Order No.	UP
Type 1: short	Knürr™ MIR2 / Knürr DCM™	01.147.813.9	1 set
Type 2: long	Knürr™ MIR2 / Knürr DCM™	01.147.814.9	1 set

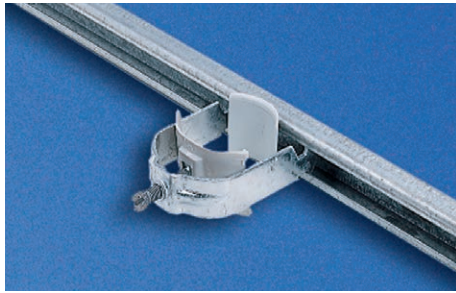
### Dimensions in mm:

W = Width	h = Installation height	U = Standard rack unit	kg = Weight	1 mm = 0.03937 inch
H = Height	d = Insertion depth	(1 U = 44.45 mm)		1 kg = 2.2046 pounds
D = Depth	L = Length	UP = Packaging unit		

### Conversion:

= assemble to order (shipped within 5 working days).  
Caution: In case of larger orders, delivery times may increase.





MIR00096

## U clamp

- Reduces cabling strain and permits individual routing of cables and lines.
- Clamping range, 8–64 mm.

- **Material**

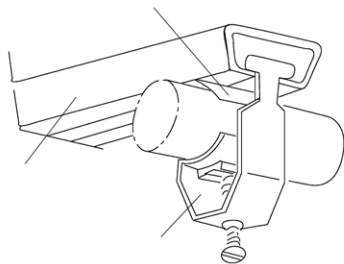
- Steel / plastic.

- **Scope of delivery**

- 25 x U clamps.
- 25 x clamping saddles.

- **How supplied**

- In sets.



ELM00086

Clamping range	Order No.	UP
8–12 mm	05.040.150.9	1 unit
12–16 mm	05.040.151.9	1 unit
16–22 mm	05.040.152.9	1 unit
22–28 mm	05.040.154.9	1 unit
34–40 mm	05.040.155.9	1 unit
46–52 mm	05.040.157.9	1 unit



MEC20136 Type 1

## Assembly crossbar

- Cable management with Velcro strips.
- Universal mounting option for installation accessories, socket strips, telecommunication installation units, mounting panels, etc.
- For side and cross installation.

- **Material / Finish**

- Sheet steel 1.5 mm, powder-coated texture.

- **Color**

- Final digit of order number .1: RAL 7035 light-grey.
- Final digit of order number .8: RAL 7021 dark-grey.

- **Scope of delivery**

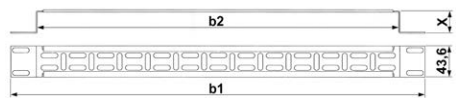
- 1 x assembly crossbar.

- **How supplied**

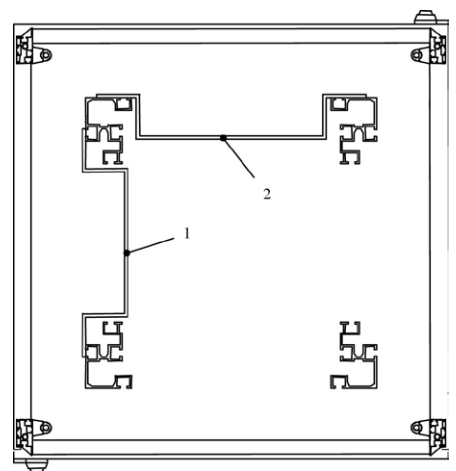
- Single items.

- **Note**

Please also order the appropriate mounting material.

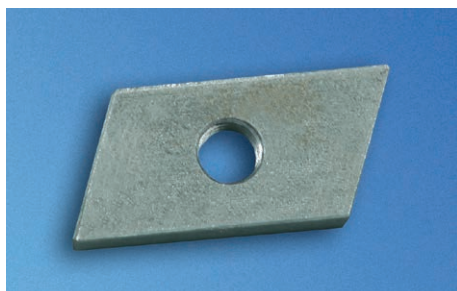


MEC20120 Type 1



MIR00094

W/d	U	w1	w2	X	Type	Model	Order No.	UP
19"	1	482	442.6	81.5	1	Pos. 2: Knürr™ MIR2 / Knürr DCM™ / Smaract™	05.040.018.X	1 unit



MEC20051

### M5 threaded plate

– Used with C extrusion rails.

- **Material / Finish**
  - Flat rolled steel, 4.0 mm, zinc passivated.

- **Scope of delivery**
  - 20 x threaded plates.
- **How supplied**
  - In sets.

Order No.	UP
05.040.077.9	1 set



MEC20042

### Cable through between the racks

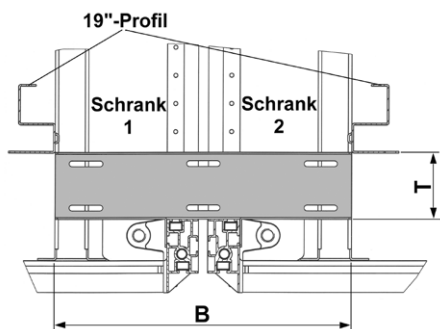
- For orderly cable routing between linked racks, adjacent racks.
- Velcro strips can be used for fastening.

- **Material / Finish**
  - Sheet steel, 1.5 mm.
  - Powder-coated texture, RAL 7035 light-grey.

- **Scope of delivery**
  - 1 x cable through.
  - 1 x Mounting kit.
- **How supplied**
  - In sets.
- **Note**

Please also order Velcro rolls.

W	D	Order No.	UP
265	60	05.040.058.1	1 unit



MEC20119



MEC20047

### FOC 19" excess cable drawer, 1U

- For storing excess fiber optic cable.
- Pull-out.
- Cables can be fastened with Velcro.

- **Material / Finish**
  - Sheet steel, 1.5 mm.
- **Color**
  - Final digit of order number .1: RAL 7035 light-grey.
  - Final digit of order number .8: RAL 7021 dark-grey.

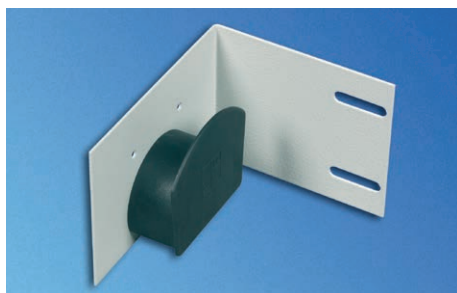
- **Scope of delivery**
  - 1 x unit.
  - 1 x drawer.
- **How supplied**
  - In sets.
- **Note**

Please also order mounting material for front plates and Velcro rolls.



MEC20099

W	H	D	Order No.	UP
483	44	350	05.040.047.X	1 set



MEC20044

## Excess fiber optic cable storage

- For orderly cable routing of Fiber optic cables in Miracel™ rack (from B 800 mm).
- For storing excess cable.

### • Material / Finish

- Base plate: powder-coated texture.
- Cable routing head: polyamide, black.

### • Color

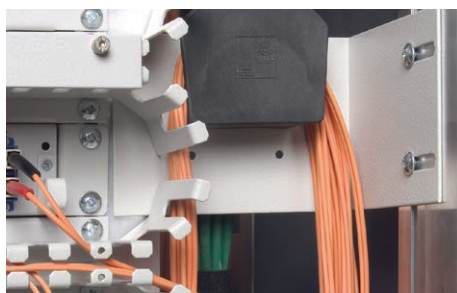
- Final digit of order number .1:  
RAL 7035 light-grey.
- Final digit of order number .8:  
RAL 7021 dark-grey.

### • Scope of delivery

- 1 x base plate.
- 1 x cable routing head.
- 1 x Mounting kit.

### • How supplied

- In sets.



MEC20146

U	Order No.	UP
2	05.040.041.X	1 set



MEC20038

## Universal cable routing bracket

- Used for extrusion distance (from front) 123 mm and 73 mm.
- For organized cable management.
- Open version, no threading.
- Mounting on the external side of the 19" extrusion.
- Any installation position selectable.

### • Material

- Round steel, d = 6 mm.

### • Finish

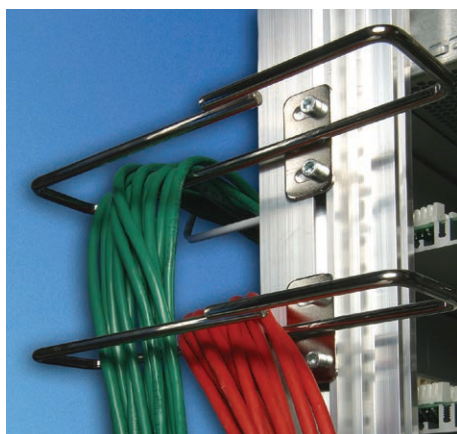
- Zinc-passivated.

### • Scope of delivery

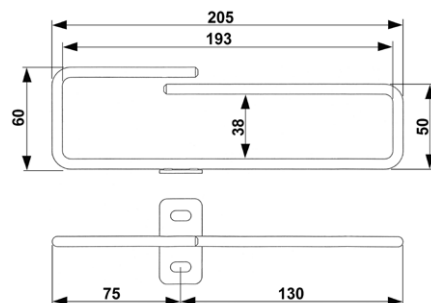
- 4 x cable routing brackets.
- 1 x Mounting kit.

### • How supplied

- In sets.



MEC20072



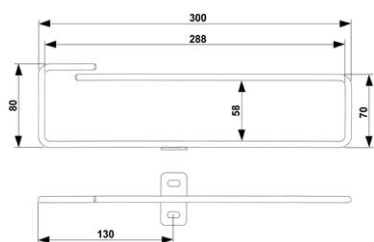
MEC20106

W <sub>Rack</sub>	For rack type	Order No.	UP
from 800	Knürr™ MIR2 / Knürr DCM™	05.040.220.9	1 Set

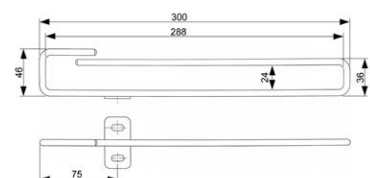
= assemble to order (shipped within 5 working days).  
Caution: In case of larger orders, delivery times may increase.



MEC20039



MEC20107 Type 1



MEC20116 Type 2

## Square cable routing bracket

- For orderly cable management.
- Open version, no threading.
- Mounted on the external side of the 19" extrusion.
- Any installation position selectable.
- For high cable density.

### Material

- Round steel, d = 6 mm.

### Finish

- Zinc-passivated.

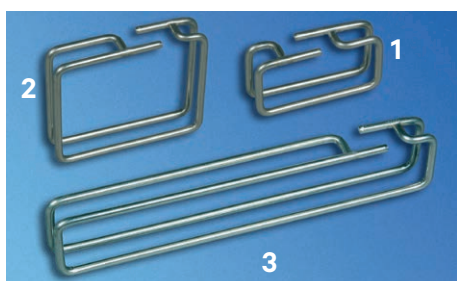
### Scope of delivery

- 4 x square cable routing brackets.
- 1 x Mounting kit.

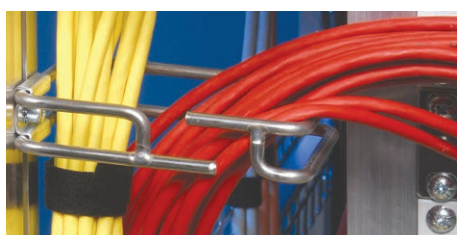
### How supplied

- In sets.

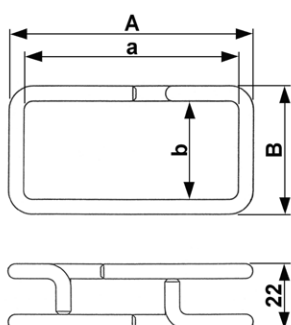
W <sub>Rack</sub>	Type	For rack type	Order No.	UP
from 800	Type 1	Knürr™ MIR2 / Knürr DCM™	05.040.221.9	4 units
from 700	Type 2	Knürr™ MIR2 / Knürr DCM™	05.040.222.9	4 units
600	Type 2	Smaract™	05.040.222.9	4 units



MEC20035



MEC20065



MEC20108

## Knürr™ MIR2 / Knürr DCM™ Cable routing bracket, flexible

- Enables flexible and organized cable routing.
- Can be easily installed in various positions within the rack.
- Open version, no threading.

### Material

- Round steel, d = 5 mm.

### Finish

- Zinc-passivated.

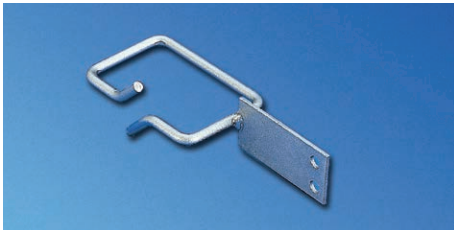
### Scope of delivery

- 10 x cable routing brackets.
- 1 x Mounting kit.

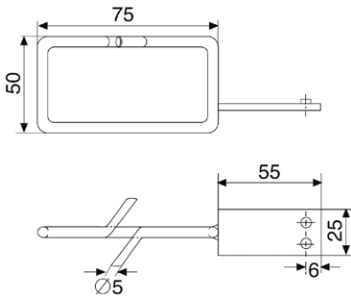
### How supplied

- In sets.

A	a	W	w	Model	Order No.	UP
82	72	43	33	Fig. 1	05.040.231.9	10 units
222	212	30	20	Fig. 3	05.040.232.9	10 units
102	92	82	72	Fig. 2	05.040.233.9	10 units



ELM00117



ELM00106

## Square cable routing bracket

- For organized cable management.
- Open version, no threading.
- Mounted on the external lateral T-slot of the 19" extrusion.
- Any installation position selectable.

- **Material**
  - Round steel, d = 5 mm.
- **Finish**
  - Zinc-passivated.

- **Scope of delivery**
  - 4 x cable routing brackets.
  - 1 x Mounting kit.
- **How supplied**
  - In sets.

For rack type	Order No.	UP
Double ProRack	05.040.226.9	4 units



ELM00028

## Section support bracket

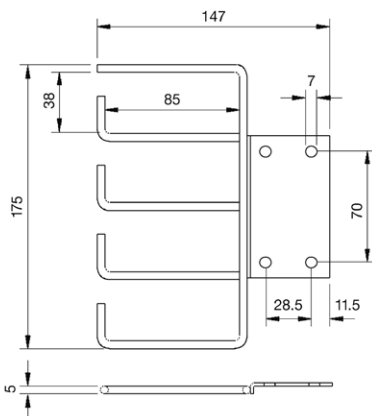
- Ideal for vertical routing and reducing cabling strain.
- Open version, no threading.
- Mounted on the external lateral T-slot of the 19" extrusion.
- Any installation position selectable.
- From rack width 600 mm.

- **Material / Finish**
  - Round steel, d = 5 mm, zinc-passivated.

- **Scope of delivery**
  - 2 x section support brackets.
- **How supplied**
  - In sets.
- **Note**

Please also order the appropriate mounting material.

Z56-1/FH



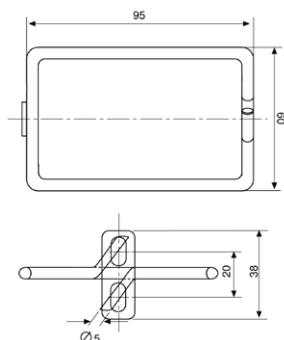
ELM00029

Model	Order No.	UP
Knürr™ MIR2 / Knürr DCM™ / Smaract™ / Double ProRack	01.117.033.7	2 units





MIR00564



MEC00122

## Cable routing bracket

- For organized cable management.
- Open version, no threading.

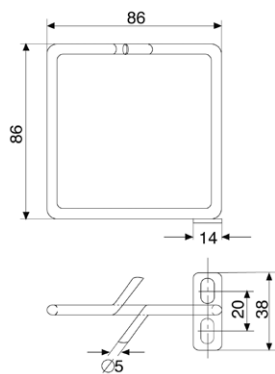
- **Material/Oberfläche**
  - Round steel, d = 5 mm.
- **Finish**
  - Zinc-passivated.

- **Scope of delivery**
  - 4 x cable routing brackets.
  - 1 x Mounting kit.
- **How supplied**
  - In sets.

Model	For rack type	Order No.	UP
95 x 60	Knürr™ MIR2 / Knürr DCM™	05.040.225.9	4 units



MIR00183



ELM00057

## Cable routing bracket, square

- For organized cable management.
- Open version, no threading.
- Mounted on the external lateral T-slot of the 19" extrusion.
- Any installation position selectable.
- From rack width 800 mm.

- **Finish**
  - Zinc-passivated, Zn 10c, white.
- **Scope of delivery**
  - 4 x vertical cable routing brackets.
  - 1 x Mounting kit.
- **How supplied**
  - In sets.

W <sub>Rack</sub>	Model	For rack type	Order No.	UP
from 800	86 x 86	Knürr™ MIR2 / Knürr DCM™	05.040.224.9	4 units

### Dimensions in mm:

W = Width	h = Installation height	U = Standard rack unit	kg = Weight	1 mm = 0.03937 inch
H = Height	d = Insertion depth	(1 U = 44.45 mm)		1 kg = 2.2046 pounds
D = Depth	L = Length	UP = Packaging unit		

= assemble to order (shipped within 5 working days).  
Caution: In case of larger orders, delivery times may increase.



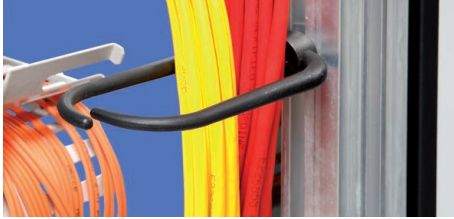


ELM20008

## Cable routing ring

- For organized cable management.
- Open version, no threading.
- Secured on the T-slots of the vertical extrusions.
- Any installation position selectable.

- **Material / Finish**
  - PA 6, GF 15, black, UL 94-HB.
- **Scope of delivery**
  - 5 x cable routing rings.
  - 1 x Mounting kit.
- **How supplied**
  - In sets.



ELM20007

Model	For rack type	Order No.	UP
54 x 118 mm	Knürr™ MIR2 / Knürr DCM™ / Smaract™	01.312.207.9	5 units



MEC20185

## Quick-Strip ties for T-slot Tool-less mounting

- Quick tool-less securing.
- For bundling cables.
- Can be unfastened and reused.
- For organized cable management.
- Can be fitted into T-slots in any position.

- **Color**
  - Black.
- **Scope of delivery**
  - 10 x Quick-Strip Velcro ties.
- **How supplied**
  - In sets.

- **Material**
  - Polyethylene and nylon.
  - F.R.T., UL-94 HB.



MEC20186

For rack type	Order No.	UP
Knürr™ MIR2 / Knürr DCM™	00.218.506.0	1 set



MEC20187

## Quick-Clamp plastic routing bracket for T-slot mounting without tools

- Quick tool-less securing.
- For organized cable management.
- Open version, no threading.
- Secures T-slots in any position.

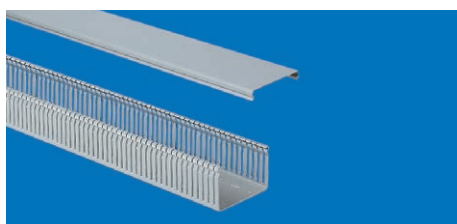
- **Color**
  - Black.
- **Scope of delivery**
  - 10 x plastic cable routing brackets.
- **How supplied**
  - In sets.

- **Material**
  - Nylon.
  - F.R.T., UL-94 HB.

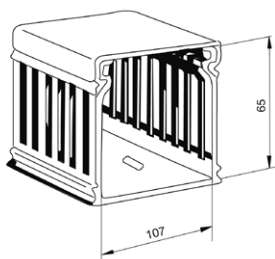


MEC20188

For rack type	Order No.	UP
Knürr™ MIR2 / Knürr DCM™	00.218.505.0	1 set 



ELM00004



ELM00052

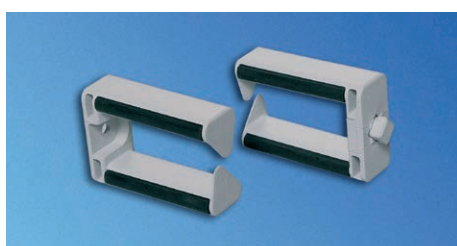
## Cable duct

– Ideal for organized and covered cable management of jumper cables.

- **Material**
  - Hard PVC.
- **Finish**
  - Stone-grey RAL 7030.

- **Scope of delivery**
  - 1 x cable duct with cover.
  - 1 x Mounting kit.

L	Order No.	UP
2000	01.117.098.3	1 unit



MEC20158

## Cable routing ring

– For organized cable management.

– Dimensions:  
Exterior 61 mm x 42.5 mm.  
Interior 52 mm x 23 mm.

- **Material / Finish**
  - Cable support: PPO, similar to RAL 7035 light-grey.
  - Soft rubber extrusion: EPDM, similar to RAL 7021 dark-grey.

- **Scope of delivery**
  - 10 x cable routers
- **How supplied**
  - In sets.
- **Note**  
Please also order the appropriate mounting material.

Model	Order No.	UP
Screw-on	05.040.113.9	10 units

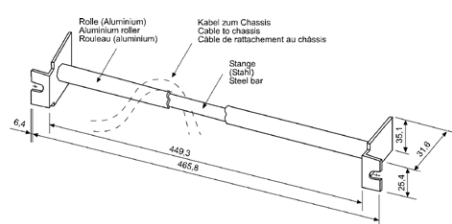


TEL00034

## Cable support bar

– For 19" racks and enclosures.  
– Reduces the cable load on slot-in.  
– Orders cabling.  
– Prevents cable-slack.

- **Material**
  - Sheet steel, 1.5 mm.
- **Scope of delivery**
  - 1 x cable support bar.

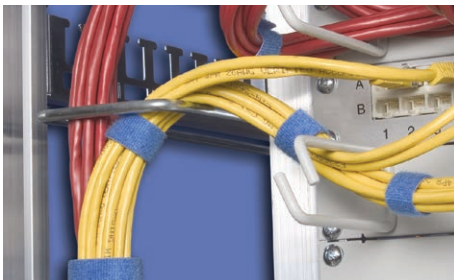


TEL00051

Order No.	UP
05.043.327.9	1 unit



MEC20048



MEC20147

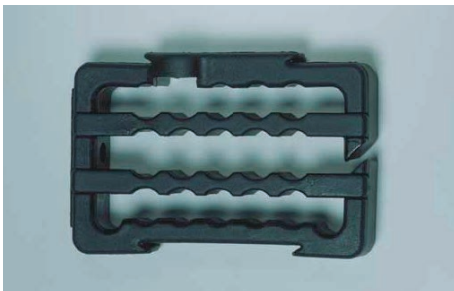
## Velcro rolls (by the meter)

- For strain-free fastening and bundling of Cu and fiber optic cables.
- Velcro rolls can be cut to any required length.

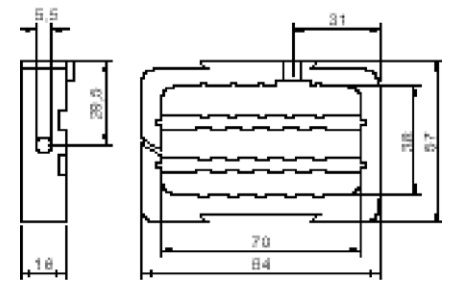
- **Material / Color**
  - Black, One-Wrap fastener.
  - F.R.T., UL 94-V2.
  - Blue: One-Wrap fastener.

- **Scope of delivery**
  - 1 meter or 25 meter Velcro rolls.
- **How supplied**
  - Sold by the meter.

W	L	Model	Order No.	UP
16	1000	Black	05.040.060.9	1 meter
16	1000	Blue	05.040.061.9	1 meter
16	25000	Black	05.040.065.9	25 meters
16	25000	Blue	05.040.066.9	25 meters



MEC20048



MEC20147

## Cable clamping frame

- For organized cable management.
- Open version, no threading.
- Cross-section for cable routing, variable with removable routing ribs.
- Can be expanded by adding on further cable clamping frames.
- Mounting options: lengthwise or across the width.

- **Material**
  - Polypropylene, black.
- **Scope of delivery**
  - 1 x cable clamping frame.
  - 1 x Mounting kit.
- **How supplied**
  - In sets.

	Order No.	UP
Knürr™ MIR2 / Knürr DCM™	01.113.153.9	1 unit

### Dimensions in mm:

W = Width	h = Installation height	U = Standard rack unit	kg = Weight	1 mm = 0.03937 inch
H = Height	d = Insertion depth	(1 U = 44.45 mm)		1 kg = 2.2046 pounds
D = Depth	L = Length	UP = Packaging unit		

### Conversion:

## Features

### CoolBlast

- Modular construction for varying heat loads; different designs available.
- Top-mounting fan and 19-fan unit available.
- Special protection grid keeps pressure losses to a minimum and reduces noise levels.
- Energy-efficient speed-controlled design also available.
- **Filter Fan.**
- Protection class IP54.
- Filter can be replaced quickly and easily.
- Can be used to draw or push air.

## Vertiv™ Knürr™ Fan Units

**The ever-increasing power losses of electronic modules make for high demands on effective cooling. Large air-flow volumes ensure secured heat dissipation. The packing density of the electronic equipment in racks and enclosures is also increasing.**

The sharp rise in the price of electricity has resulted in energy efficiency gaining importance and environmental concerns increasingly become a prominent decision-making factor. Consequently, the use of speed-controlled fan units is rising. The additional costs generally prove to be a worthwhile investment.







LUF20203



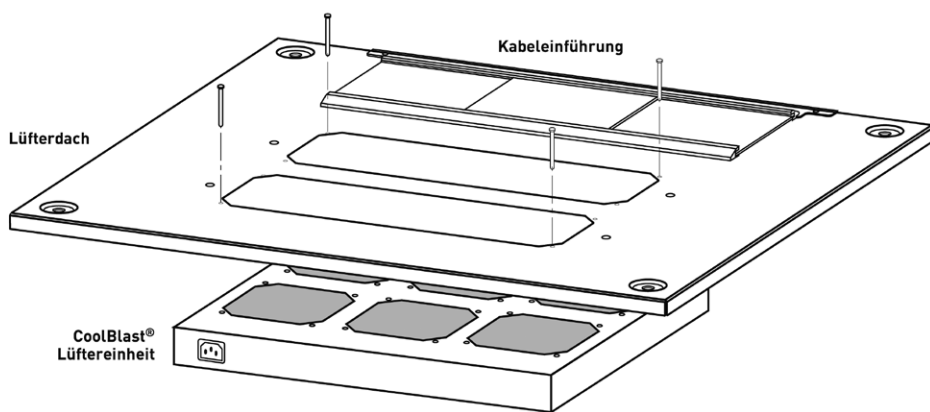
LUF20205



LUF20124

## Vertiv™ Knürr™ CoolBlast Fan Unit for Cover Panel Installation Unregulated and thermostat-controlled

- Provides powerful rack cooling.
  - Suitable for retrofitting in cover panel of Knürr™ MIR2 / Knürr DCM™ rack.
  - DC versions and 115 VAC versions upon request (see Vertiv™ Knürr™ CoolBlast fan inserts).
  - Thermostat-controlled model: Fan function (ON/OFF) thermostat-controlled; setting range from 0° to +60° C.
- **Scope of delivery**
    - 1 x CoolBlast fan unit.
    - 1 x mains cable, 3 m with safety plug (230 VAC).
    - 1 x Mounting kit.
    - 1 x Operating instructions.
  - **How supplied**
    - Assembled, wired and tested.
  - **Note**
    - Please also order corresponding mains cable.
    - 6-fan unit not possible for cabinets with D800.
- **Material**
    - Enclosure: sheet steel, high-grade steel grid.
  - **Finish**
    - Zinc-passivated.
  - **Compliance**
    - CE marking compliant with Low Voltage Directive 2014/35/EU, EMC directive 2014/30/EU

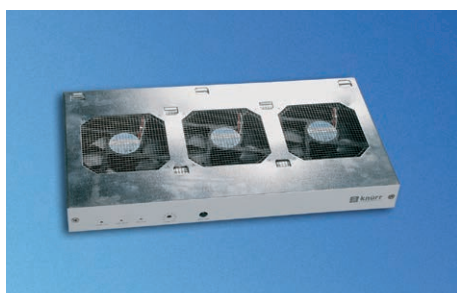


LUF20175

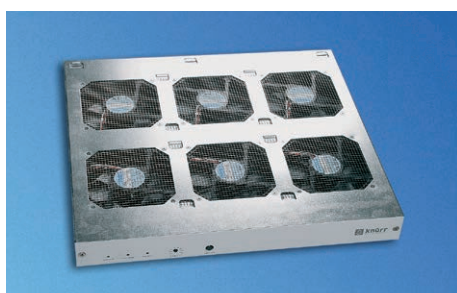
Name	Model	Electrical connection	P(W)	V' (m³/h)	ΔP(Pa)	p(dB(A))	Order No.	UP
CoolBlastT 230V 3-piece		230 VAC; 50/60 Hz	92	495	74	45.2	03.027.301.1	1 unit
CoolBlastT 230V 6-piece		230 VAC; 50/60 Hz	184	990	74	48.8	03.027.302.1	1 unit
CoolBlastT 230V 2-piece	Thermostat	230 VAC; 50/60 Hz	46	330	74	43.4	03.027.310.1	1 unit
CoolBlastT 230V 3-piece	Thermostat	230 VAC; 50/60 Hz	92	495	74	45.2	03.027.311.1	1 unit
CoolBlastT 230V 6-piece	Thermostat	230 VAC; 50/60 Hz	184	990	74	48.8	03.027.312.1	1 unit

= assemble to order (shipped within 5 working days).  
Caution: In case of larger orders, delivery times may increase.

## Vertiv™ Knürr™ CoolBlast Fan Unit for Cover Panel Installation speed-controlled



LUF20160

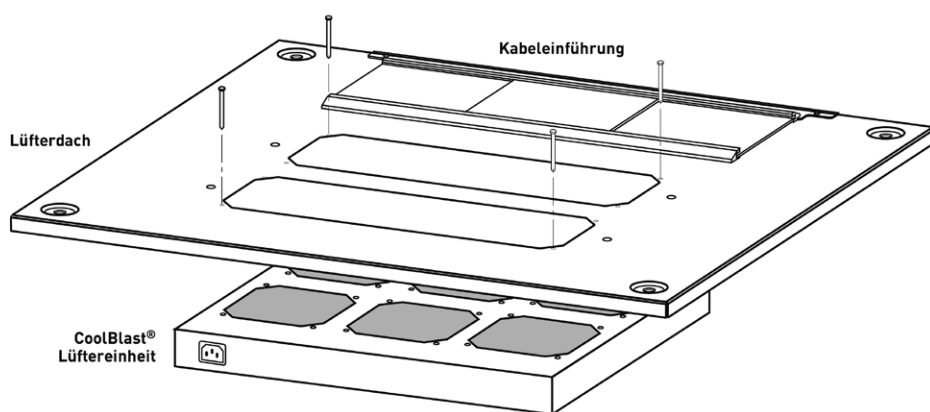


LUF20161



LUF20124

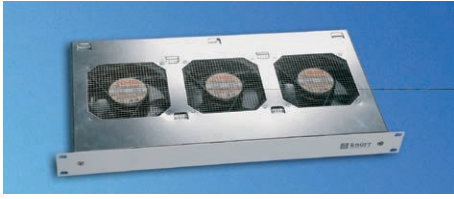
- Provides powerful rack cooling.
  - Suitable for retrofitting in top cover of Knürr™ MIR2 / Knürr DCM™ rack.
  - DC version upon request (see CoolBlast fan inserts).
  - Settable reference temperature (20° to 55° C).
  - Speed control, 30 to 100 %, if sensor fails, 100 % rotation.
  - Individual fan monitoring.
  - Potential-free common alarm output for excess temperature and fan failure.
  - Visual status display for O.K., excess temperature and fan failure.
  - Acoustic warning inclusive reset button.
- **Compliance**
    - CE marking compliant with Low Voltage Directive 2014/35/EU, EMC directive 2014/30/EU.
  - **Scope of delivery**
    - 1 x CoolBlast fan unit.
    - 1 x sensor cable, 2 m (plug-in).
    - 1 x signal cable, 2 m (plug-in).
    - 1 x mains cable, 3 m with safety plug (230 VAC).
    - 1 x Mounting kit.
    - 1 x Operating instructions.
  - **How supplied**
    - Assembled, wired and tested.
  - **Note**
    - Please also order specific mains cable.
    - 6-fan unit not possible for cabinets with D800.
  - **Material**
    - Enclosure: sheet steel, high-grade steel grid.
  - **Finish**
    - Zinc-passivated front cover plate, powder-coated, smooth in RAL 7035 light-grey.



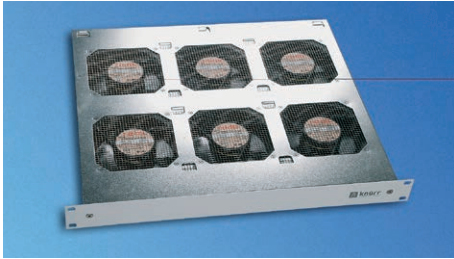
LUF20175

Name	Model	Electrical connection	P(W)	V' (m³/h)	ΔP(Pa)	p(dB(A))	Order No.	UP
CoolBlastT 230V 3-piece	Regulated SP	115-230 VAC; 50/60 Hz	46	553	68	49.6	03.027.321.1	1 unit
CoolBlastT 230V 6-piece	Regulated SP	115-230 VAC; 50/60 Hz	92	1106	68	53.3	03.027.322.1	1 unit
CoolBlastT 230V 3-piece	Regulated HP	115-230 VAC; 50/60 Hz	81	711	173	55.8	03.027.324.1	1 unit
CoolBlastT 230V 6-piece	Regulated HP	115-230 VAC; 50/60 Hz	150	1422	173	59.1	03.027.325.1	1 unit





LUF20125



LUF20139

## 19" Vertiv™ Knürr™ CoolBlast Fan Unit Unregulated and thermostat-controlled

- Fan unit for vertical ventilation of modules in 19" racks.
- Chassis rails are recommended for mounting. Chassis rails are required with 6-piece CoolBlast (use chassis runner, adjustable depth).
- Thermostat-controlled model: Fan function (ON/OFF) thermostat-controlled; setting range from 0° to + 60° C.

### • Material

- Sheet steel, high-grade steel grid.

### • Finish / Color

- Enclosure zinc-passivated.
- Front cover plate, powder-coated, smooth in RAL 7035 light-grey.

### • How supplied

- Assembled, wired and tested.

### • Compliance

- CE marking compliant with Low Voltage Directive 2014/35/EU, EMC directive 2014/30/EU.

### • Scope of delivery

- 1 x CoolBlast fan unit, packed with operating instructions.
- 1 x connection cable, 2 m; Euro power plugs and sockets.

### • Note

- Please also order specific mains cable.
- 6-fan unit not possible for cabinets with D800.

Name	W	H	D	kg	n	Electrical connection	P(W)	V' (m³/h)	ΔP(Pa)	p(dB(A))	Order No.
CoolBlast 230V 3-piece, thermostat	440	43,6	230	3	3	230 VAC; 50/60Hz	92	495	74	45.2	03.027.011.1
CoolBlast 230V 6-piece, thermostat	440	43,6	390	6	6	230 VAC; 50/60Hz	184	990	74	48.8	03.027.012.1
CoolBlast 115V 3-piece, thermostat	440	43,6	230	3	3	115 VAC; 50/60Hz	92	576	88	47.3	03.027.014.1
CoolBlast 115V 6-piece, thermostat	440	43,6	390	6	6	115 VAC; 50/60Hz	173	1152	88	50.8	03.027.015.1
CoolBlast 24V 3-piece SP	440	43,6	230	2,5	3	24 VDC	24	553	68	49.6	03.027.031.1
CoolBlast 24V 6-piece SP	440	43,6	390	5	6	24 VDC	48	1106	68	53.3	03.027.032.1

### Dimensions in mm:

W = Width	h = Installation height	U = Standard rack unit	kg = Weight	1 mm = 0.03937 inch
H = Height	d = Insertion depth	(1 U = 44.45 mm)	1 kg = 2.2046 pounds	
D = Depth	L = Length	UP = Packaging unit		

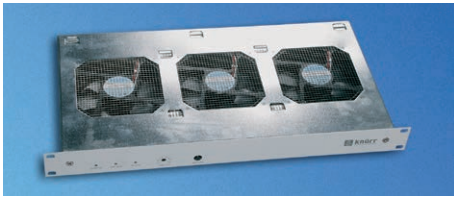
### Conversion:

SP = Standard Performance	V' = Air-flow volume (m³/h)
HP = High Performance	ΔV' = Air-flow volume loss (%)
UP = Ultra High Performance	ΔP = Pressure increase (Pa)
n = Number of fans	I <sub>nom</sub> = Nominal current (A)
W = Power consumption	I <sub>max</sub> = Residual current (A)
V = Voltage (400V = 3-phase)	p = Sound pressure (dB(A) distance from the rack 1 m (600 mm x 600 mm; raised cover)

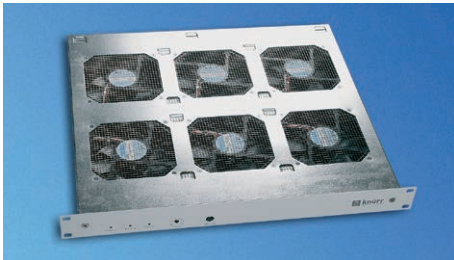
**P = assemble to order** (shipped within 5 working days).  
Caution: In case of larger orders, delivery times may increase.

## Technical data for Axial Single Fan

	Vertiv™ Knürr™ CoolBlast	Vertiv™ Knürr™ CoolBlast	Vertiv™ Knürr™ CoolBlast	Vertiv™ Knürr™ CoolBlast	Vertiv™ Knürr™ CoolBlast
Item number	01.914.070.9	01.914.075.9	01.914.050.9	01.914.051.9	01.914.051.9-2
Dim: L x W x H	119 x 119 x 38	119 x 119 x 38	119 x 119 x 38	119 x 119 x 38	119 x 119 x 38
Max. volume flow, free blowing:	184.2 m³/h	237 m³/h	192 m³/h	165 m³/h	120 m³/h
Voltage	24 VDC	24 VDC	115 VAC	230 VAC	230 VAC
Frequency			50 Hz	50 Hz	50 Hz
Power consumption	7.4 W	11 W	14.5 W	15 W	7.5 W
Noise, free blowing	43 dB(A)	59 dB(A)	41 dB(A)	38 dB(A)	32 dB(A)
Bearing system	Ball bearing	Ball bearing	Ball bearing	Ball bearing	Ball bearing
Nominal speed	2950 min <sup>-1</sup>	4400 min <sup>-1</sup>	2900 min <sup>-1</sup>	2600 min <sup>-1</sup>	2100 min <sup>-1</sup>
Permitted ambient temp.	-10 °C to + 70 °C	-30 °C to + 55 °C	-40 °C to + 60 °C	-40 °C to + 60 °C	-40 °C to + 70 °C
Service life, L10 at 40°C	75,000 h	70,000 h	43,500 h	43,500 h	43,500 h
Compliance	CE, VDE	CE, VDE	CE, VDE	CE, VDE	CE, VDE
<b>Use in fan unit:</b>	03.027.021.1 03.027.022.1 03.027.051.1 03.027.052.1 03.027.321.1 03.027.322.1	03.027.024.1 03.027.025.1 03.027.054.1 03.027.055.1 03.027.324.1 <b>P</b> 03.027.325.1	03.027.014.1 03.027.015.1	03.027.011.1 03.027.012.1 03.027.301.1 03.027.302.1 03.027.310.1 03.027.311.1 <b>P</b> 03.027.312.1 02.111.180.9 05.010.306.1 01.243.428.1 03.028.110.8	02.111.181.9 05.010.307.1



LUF20128



LUF20140



LUF20054

## 19" Vertiv™ Knürr™ CoolBlast Fan Unit Speed-controlled

- Fan unit for vertical ventilation of modules in 19" racks.
- Reference temperature can be set (20°C to 55°C).
- Speed control, 30 to 100 %; if sensor fails, 100 % rotation.
- Individual fan monitoring.
- Potential-free alarm output for excess temperature alarm and fan failure.
- Visual status display for O.K., excess temperature and fan failure.
- Acoustic alarm can be switched off with switch.
- Chassis rails are recommended for mounting. Chassis rails are required with 6-piece CoolBlast (use chassis runner, adjustable depth).

### • Material

- Sheet steel, high-grade steel grid.

### • Finish / Color

- Enclosure zinc-passivated.
- Front cover plate, powder-coated, smooth in RAL 7035 light-grey.

### • Compliance

- CE marking compliant with Low Voltage Directive 2014/35/EU, EMC directive 2014/30/EU.

### • Scope of delivery

- 1 x CoolBlast fan unit, packed with operating instructions.
- 1 x sensor cable, 2 m (plug-in).
- 1 x signal cable, 2 m (plug-in).

Only with DC devices:

- 1 x connection cable, 2 m with connector plug and free ends.

Only with AC devices:

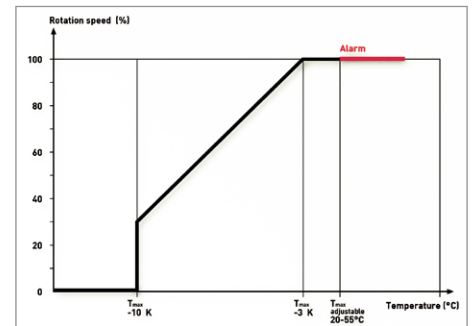
- 1 x connection cable, 2 m; Euro power plugs and sockets.

### • How supplied

- Assembled, wired and tested.

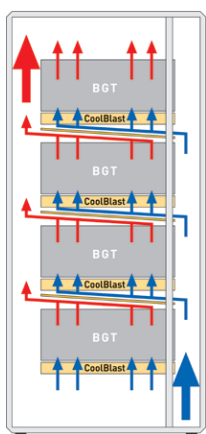
### • Note

- Further project-specific characteristics can be realized in line with standards.
- 6-fan unit not possible for cabinets with D800.



LUF20179

Name	W	H	D	kg	n	Electrical connection	P(W)	V (m <sup>3</sup> /h)	ΔP(Pa)	p(dB(A))	Order No.
CoolBlast 115/230V, 3-piece, controlled SP	440	43.6	230	3.2	3	115 to 230 VAC; 50/60Hz	46	553	68	49.6	03.027.021.1
CoolBlast 115/230V, 6-piece, controlled SP	440	43.6	390	6.2	6	115 to 230 VAC; 50/60Hz	92	1106	68	53.3	03.027.022.1
CoolBlast 115/230V, 3-piece, controlled HP	440	43.6	230	3.2	3	115 to 230 VAC; 50/60Hz	81	711	173	55.8	03.027.024.1
CoolBlast 115/230V, 6-piece, controlled HP	440	43.6	390	6.2	6	115 to 230 VAC; 50/60Hz	150	1422	173	59.1	03.027.025.1
CoolBlast 24/48V, 3-piece, controlled SP	440	43.6	230	3.1	3	24 to 48 VDC	26	553	68	49.6	03.027.051.1
CoolBlast 24/48V, 6-piece, controlled SP	440	43.6	390	6.1	6	24 to 48 VDC	48	1106	68	53.3	03.027.052.1
CoolBlast 24/48V, 3-piece, controlled HP	440	43.6	230	3.1	3	24 to 48 VDC	34	711	173	55.8	03.027.054.1
CoolBlast 24/48V, 6-piece, controlled HP	440	43.6	390	6.1	6	24 to 48 VDC	62	1422	173	59.1	03.027.055.1



LUF20156

## Vertiv™ Knürr™ CoolBlast – Air-flow Routing via Front Intake, 1 U

- The "front-intake unit" for the Vertiv™ Knürr™ CoolBlast fan delivers targeted cooling for module supports arranged on top of each other (heat sources).
- For Knürr™ CoolBlast slot-in unit 3 and 6 piece for front intake.
- Used as cooling baffle.
- Can be supplemented with front plate and filter mat.

- **Scope of delivery**
  - 1 x air-flow guide.
- **How supplied**
  - Single items.

- **Material**
  - Sheet steel.
- **Finish / Color**
  - Powder-coated texture, RAL 7035.
  - Light-grey.



LUF20131



LUF20142

H	D	Model	Order No.	UP
43.6	230	For 3-piece	03.027.094.1	1 unit
43.6	390	For 6-piece	03.027.095.1	1 unit



LUF00205

## 19" Filter Unit, 1 U

- Suitable for use with CoolBlast slot-in unit.
- Adjusted to the respective recess depth.

- **Finish / Color**
  - Enclosure: powder-coated texture, RAL 9011 dark-grey.
  - Front cover plate: RAL 7035, light-grey.
  - Handle: powder-coated texture, RAL 5008 grey-blue.

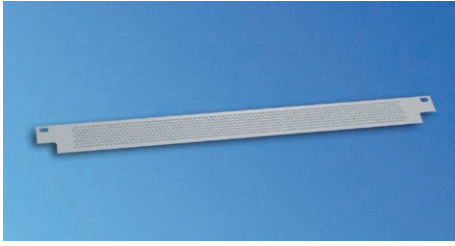
- **Material**
  - Enclosure: sheet steel.
  - Front cover plate: ABS (UL94 V-0).
  - Handle: extruded aluminum.
  - Filter: Viledon P 15/150.

- **Scope of delivery**
  - 1 x filter insert.
  - 1 x filter.

- **Filter class**
  - G2.

- **How supplied**
  - Single items.

H	D	kg	Order No.	UP
43.6	282	2.0	03.025.250.1	1 unit
43.6	660	4.0	03.025.253.1	1 unit



LUF20136

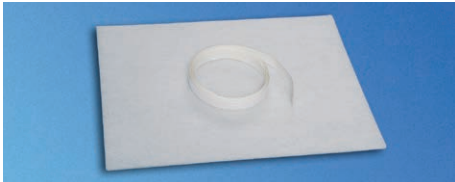
## Vertiv™ Knürr™ CoolBlast Front Plate

- For use with air-flow guide for front intake.
- Can be retrofitted.

- **Material**
  - Sheet steel.
- **Finish / Color**
  - Powder-coated, RAL 7035.
  - Light-grey, smooth.

- **Scope of delivery**
  - 1 x front plate.
- **How supplied**
  - Single items.

H	Order No.	UP
43.6	03.027.097.1	1 unit

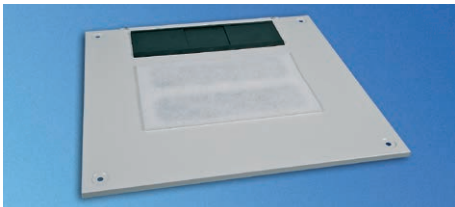


LUF20121

## CoolBlast Dust/Particle Protection Solution 1: Filter Mat

- Used with CoolBlast fan top cover.
- Simple filter cover preventing the ingress of dust when the fan stops (regulated or thermostat-controlled version available).
- For all top-cover sizes; filter and adhesive tape can be cut to the required length.

- **Material**
  - Fyledon (filter class G2)
- **Scope of delivery**
  - 1 x filter.
  - 1 x Adhesive tape.
- **How supplied**
  - In sets.



LUF20168

Model	Order No.	UP
For 2, 3 and 6-piece fan unit	01.149.101.9	1 set



LUF20135

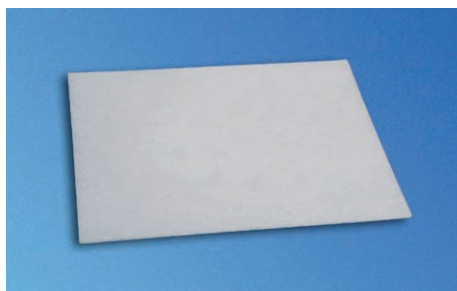
## Vertiv™ Knürr™ CoolBlast Filter for Front Intake

- For use with air-flow routing via front intake.
- Can be retrofitted; filter can also be replaced during operation.

- **Filter class**
  - G2.

- **Material**
  - Viledon K15/150.
- **Scope of delivery**
  - 1 x filter.
- **How supplied**
  - Single items.

W	D	Model	Order No.	UP
400	160	For 3-piece	03.027.098.1	1 unit
400	320	For 6-piece	03.027.099.1	1 unit



LUF00280

## Replacement Filter

– For 19" filter insert.

- **Material**
  - Filter: Viledon P 15/150.
- **Filter class**
  - G2.

- **Scope of delivery**

- 1 x filter.

- **How supplied**

- Single items.

D	Order No.	UP
282	03.025.246.9	1 unit
660	03.025.249.9	1 unit



LUF20057

## Filter Fan

– For specific use where hot spots occur.  
 – Also suitable for retrofitting, quick and easy.

– The filter mats provide high-level filtration, are easily exchanged and can be cleaned.

– These maintenance-free fans feature a long service life and low noise levels.

– Air-flow routing: blows into the rack (pre-set).

– Can be used to draw in or move air out.

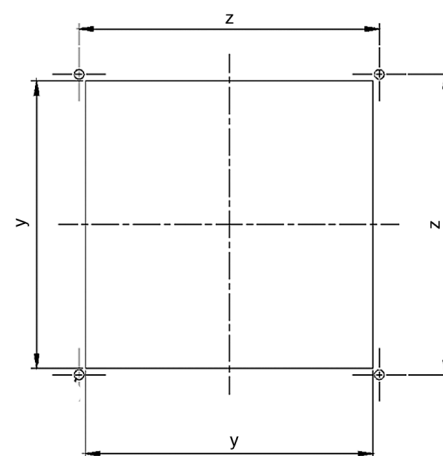
- **Material**
  - Heat-resistant ABS plastic, UL 94 V-0
- **Color**
  - RAL 7035 light-grey.

- **Compliance**

- CE marking

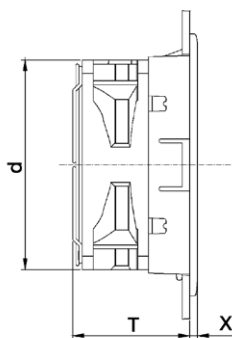
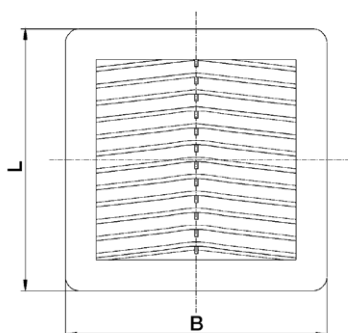
- **Protection rating**

- IP 54.

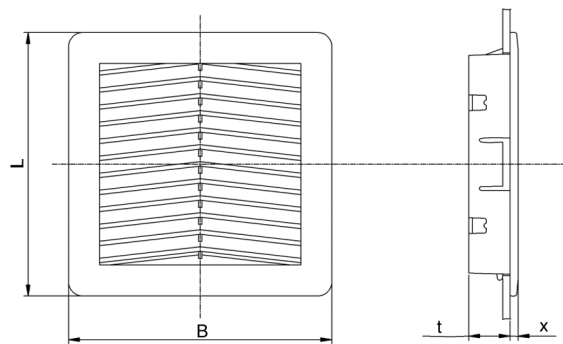


LUF20058

LUF800040



LUF80012



LUF80011



# Vertiv™ Knürr™ Rack Accessories Catalogue

LxW	D/l/x	y/z	kg	Max. AF	El. conn.	L	G	N	Service life/40°	Model	Order No.	UP
150 x 150	71/120/5	125/131	0.812	57 m³/h	230V / 50/60Hz	20 W	43 dB(A)	2650/min	40,000 h	Filter fan	<b>03.026.501.1</b>	1 unit
204 x 204	90/120/5.7	177/185	1	90 m³/h	230V / 50/60Hz	20 W	43 dB(A)	2650/min	40,000 h	Filter fan	<b>03.026.502.1</b>	1 unit
250 x 250	113/172/6	223/230	1.690	240 m³/h	230V / 50/60Hz	29 W	50 dB(A)	2800/min	40,000 h	Filter fan	<b>03.026.503.1</b>	1 unit
325 x 325	125/208/7	291/302	3.620	520 m³/h	230V / 50/60Hz	67 W	63 dB(A)	2770/min	50,000 h	Filter fan	<b>03.026.504.1</b>	1 unit
150 x 150	24/5	125/131	0.140							Exit filter	<b>03.026.511.1</b>	1 unit
204 x 204	20.5/5.7	177/185	0.275							Exit filter	<b>03.026.512.1</b>	1 unit
250 x 250	25/6	223/230	0.440							Exit filter	<b>03.026.513.1</b>	1 unit
325 x 325	26/7	291/302	0.780							Exit filter	<b>03.026.514.1</b>	1 unit
150 x 150										Replacement filter mat	<b>03.026.521.9</b>	6 unit
204 x 204										Replacement filter mat	<b>03.026.522.9</b>	6 unit
250 x 250										Replacement filter mat	<b>03.026.523.9</b>	6 unit
325 x 325										Replacement filter mat	<b>03.026.524.9</b>	6 unit



LUF00237a

## Temperature Module

- For monitoring the inside temperature of the rack.
- Temperature display (+ 10°C to + 70°C).
- Alarm temperature set via potentiometer at the front.
- Visual alarm display (LED red).
- Alarm signaling via potential-free switching contact (1 changeover contact 250 VAC / 8 A).
- Power supply 230 V / 50 Hz.

### Material

- Plastic.

### Compliance

- CE marking complaint with Low Voltage Directive 2014/35/EU, EMC directive 2014/30/EU.

### Scope of delivery

- 1 x Temperature module.
- 1 x Temperature sensor (3 m).

### How supplied

- Assembled, wired and tested.

Order No.	UP
<b>01.117.525.1</b>	1 unit

SP = Standard Performance	V' = Air-flow volume (m³/h)
HP = High Performance	ΔV' = Air-flow volume loss (%)
UP = Ultra High Performance	ΔP = Pressure increase (Pa)
n = Number of fans	I <sub>nom</sub> = Nominal current (A)
W = Power consumption	I <sub>max</sub> = Residual current (A)
V = Voltage (400V = 3-phase)	p = Sound pressure (dB(A) distance from the rack 1 m (600 mm x 600 mm; raised cover)

**P** = assemble to order (shipped within 5 working days).  
Caution: In case of larger orders, delivery times may increase.



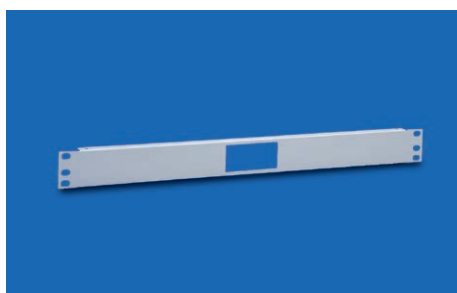
LUF20000

## Thermostat

- For monitoring the inside temperature of the rack with respect to slot-in units and heating fans.
- Setting range: + 10°C to + 60°C.
- Switching temperature difference (hysteresis) 2 K.
- Contact type: 1 changeover contact.
- Sensor: thermo-bimetal.
- Contact rating: 230 VAC/10 A (heating), 5 A (cooling).
- Interference suppression: compliant with DIN 55014.

Order No.	UP
01.113.384.3	1 unit

- **Material**
  - Plastic.
- **Protection rating**
  - IP 30.
- **Compliance**
  - CE marking complaint with Low Voltage Directive 2014/35/EU.
- **Dimensions**
  - 74 x 74 x 23 mm.
- **Scope of delivery**
  - 1 x thermostat.
  - 1 x mounting bracket.
  - 1 x Mounting kit.



LUF00256

## 19" Front Plate 1 U for Temperature Module

- For temperature module installation.

- **Material / Finish**
  - Sheet steel, 1.5 mm, powder-coated texture.
- **Color**
  - RAL 7035 light-grey.
- **Scope of delivery**
  - 1 x 19" front plate.

Order No.	UP
01.117.526.1	1 unit



LUF00255

## Bracket for Temperature Module

- For non-standard temperature module installation, e.g., on the side of the 19" extrusion.

- **Material / Finish**
  - Aluminum, 2 mm, polished.

- **Scope of delivery**
  - 1 x bracket.
  - 1 x Mounting kit.
- **How supplied**
  - In sets.

Order No.	UP
01.117.527.0	1 unit

### Dimensions in mm:

W = Width	h = Installation height	U = Standard rack unit	kg = Weight	1 mm = 0.03937 inch
H = Height	d = Insertion depth	(1 U = 44.45 mm)		1 kg = 2.2046 pounds
D = Depth	L = Length	UP = Packaging unit		

### Conversion:

## @Lock™ – solutions for racks

### Access control for data centers and technical rooms

**Data centers are broken into on a regular basis. In many cases, the intention is simply to steal high-quality IT equipment. However, breaking in may only be a pretense for stealing data and/or putting in place a man-in-the-middle infrastructure.**

On 28 February 2011 for example, an important data center belonging to a global telecommunications service provider was paralyzed by intruders. Only a few weeks previously, a DC service provider working on behalf of a major health care company became the victim of an attempted break-in, which resulted in the entire security concept undergoing a TÜV audit. Generally speaking, attacks of this kind go undetected. Data centers are security areas and therefore need to be secured through various measures. An important part of this is controlling access to and in the data center.

Controlling access to the data center is usually achieved through a combination of organizational measures, e.g., gates and turnstiles, besides a building access control system.

Working with various partners, Vertiv™ has developed system concepts which not only improve physical security through access controls within the data center but also simplify operative processes, making them less susceptible to errors. These concepts are known as "@Lock™".



@Lock™ solution with MLR handles in a co-location datacenter

## @Lock™ – solutions for racks

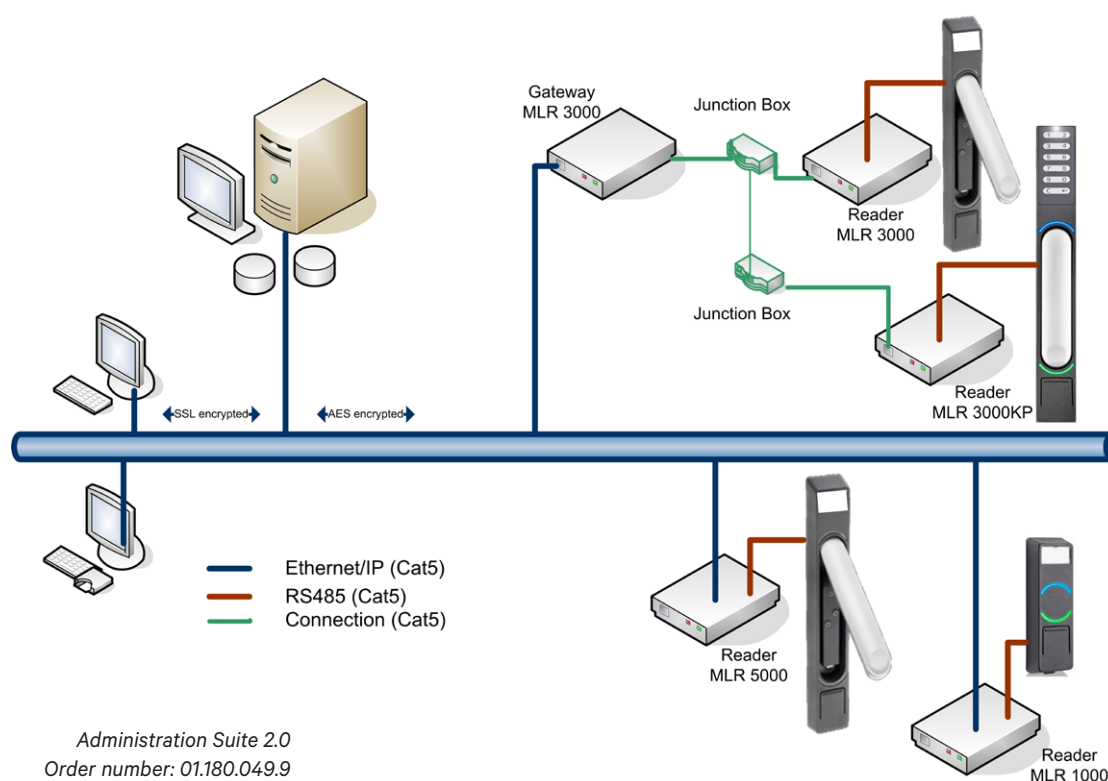
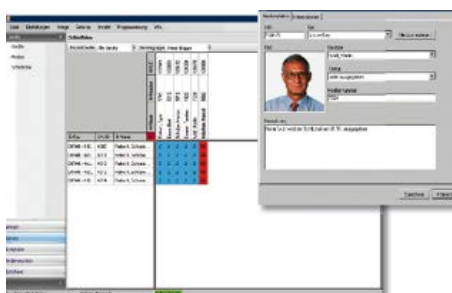
### Option 1: Transponder card systems @Lock "transponder card system" concept

**This system concept can be applied throughout – from the DC and cold aisle doors to the individual cabinets. In addition to the card readers and handles, the extensive "Administration Suite" management software is a key part of the system.**

Thanks to its modular design and open infrastructure architecture, the new Administration Suite can be expanded as required and can also be implemented for third party providers.

- Encrypted data communication between the hardware, server and client.

- Runs on Windows 7 SP1, Windows 8, Windows 8.1, Windows 10, Windows Server 2012, Windows Server 2012 R2, Windows Server 2016.
- Allows administration of various users with different types of authorization.
- Client/server capability.
- Straightforward user guidance in spite of extensive tools.
- Wide range of alarm messages.
- Automatic alarm notification via e-mail.
- Centralized locking plans and access management.
- Support for the most common transponder types.
- Central management of various systems.
- Records all actions in "Log Events".
- Real-time visualization of the swing handle stations.
- Configuration of special days with different locking regimes.
- Allocation of time profiles for access.
- Able to export "Log Events".
- Multilingual software.





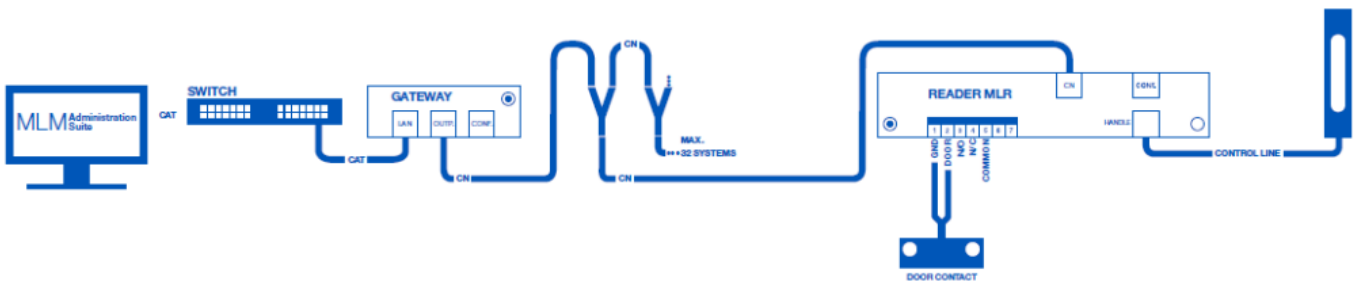
**MLR 3000 and MLR 5000 handles are suitable for linking server or network cabinets to the transporter card system. The E-LINE, by Dirak mechatronic swing handles and the Administration Suite software, provide a convenient, reliable way of monitoring access to your data or server cabinet. With the Administration Suite software, security officers can conveniently monitor and manage access directly from a PC.**

The integrated LEDs display alarm messages and types of authorization on the handle itself. As a result, technicians on site are given the same information that the Administration Suite software sends to the headquarters. LEDs at the top and bottom of the handle offer permanently high luminosity with low power consumption. As a result, the lock status can be determined quickly, even from a distance of several meters.

The top LED can indicate various statuses, such as that the handle is ready to be opened or locked. The bottom LED displays whether the handle is within or outside the temperature range for the cabinet selected by the customer. As a result, irregularities may be identified quickly, leaving enough time for appropriate action to be taken.

The information display integrated into the handle is backlit and allows customer-specific information, such as the cabinet row, cabinet number etc., to be added for extra clarity.

**Handles are also available with integrated Keypad (MLR5000KP). They can be used with either keycard, keypad or both (two-factor-authentication).**



@Lock MLR3000

*Particularly well suited for rooms containing a large number of server racks (central server rack structure). With just one IP address it is possible to manage up to 32 swing handles in one MLR gateway.*



@Lock LR5000

*Designed to facilitate convenient central monitoring and administration of decentralized server racks. The swinghandles are assigned unique IP addresses.*

## Technical data – @Lock™ MLR3000/5000

### Handle electronics

Two-part hardware design	Swing handle and reader unit
Visualization	Multicolored status LED
Reader	For 125 kHz transponders (HID 26 bit system), alternatively 13.56 MHz (MIFARE)

### Reader

Housing	Reader unit in plastic housing can be fixed with screws or self-adhesive pad
Power supply	12 V ± 10 % (DC) via low voltage socket
Standby current (system ready)	40 mA (DC)
Max. current consumption (with connector tightening)	440 mA (DC)
RS232 interface for MLR3000	RS232 cable (RXD, TXD, GND, Reader present, PC present), 38,400 baud
Current increase for MLR5000 via Ethernet interface	125 mA (DC)
TCP/IP interface	Ethernet, 10/100 Autosense, up to 100 Mbaud
Connecting cable (reader - handle electronics)	8-pole, 350 cm, UL stranded wire AWG 26, one side with gated RJ45 plug, one side with crimped JST ZH connector ZHR-8
Relay output (via screw clamps)	2.5 mm <sup>2</sup> , can be screwed in from plug side, relay contact: 12 V, 3 A, 60 W, 120
Door contact input (via screw clamps)	2.5 mm <sup>2</sup> , can be screwed in from plug side, terminals 1 and 2
RS485 interface	RS485 cable to the E-LINE by DIRAK Gateway, (+/A, -/B), 38,400 baud
Memory capacity for transponder cards	2000 + 1 master transponder
Memory capacity for events	500 (ring memory)
Memory capacity for time profiles	30
Integrated real-time clock	With buffering of up to 60 min at 25 °C
Temperature range	-20°C – +70°C

Type	Model	Order No.	UP
@Lock™ MLR3000	for Miracel and DCM front door	01.180.226.9	1 unit
@Lock™ MLR3000	for twin door (e.g. DCM rear door)	01.180.227.9	1 unit
@Lock™ MLR5000	for Miracel and DCM front door	01.180.228.9	1 unit
@Lock™ MLR5000	for twin door (e.g. DCM rear door)	01.180.229.9	1 unit
@Lock™ MLR5000 Key Pad	for Miracel and DCM front door	01.180.240.9	1 unit
@Lock™ MLR5000 Key Pad	for twin door (e.g. DCM rear door)	01.180.241.9	1 unit

Accessories	Order No.	UP
Door contact without RJ-45 plug	06.108.115.9	1 unit
HID transponder card	01.180.040.9	1 unit
Desktop reader for the initial reading of transponder cards	01.180.128.9	1 unit
MLR3000 Gateway	01.180.111.9	1 unit
Plug-in power supply (Europe Schuko)	01.180.035.9	1 unit
Plug power supply Unit C14	01.180.035.9.000001	1 unit





## Technical data – MLU3000/5000

**MLU card readers can be used to connect a room door with existing electromechanical locking or motorized cold aisle door (Coolfex):**

- Three-part hardware design MLU3000 set comprising: external MLU reader, network reader unit and MLU1000 lock. Visualization on MLU reader: 2 x multicolored status LEDs and 1 x backlit information display. Antenna for 125 kHz transponders (HID 26 bit system).
- **Optional MLU1000 lock**
  - Die-cast zinc (GDZn), color: matt chrome.
  - 4 m control cable.
  - Power supply 24 V DC +/- 10% 100 mA.
  - Proximity sensor status contact.
  - Wall/sheeting thickness independent.
  - Electronic opening by interrupting the power supply.
- **MLU3000/MLU5000 network reader**
  - Housing reader unit in plastic housing can be fixed with screws or a self-adhesive pad.
  - Nominal input voltage 12/24/48 V ± 10 % (DC) depending on the electronic lock connected.
  - Standby current (system ready) 40 mA (DC).
  - Max. current consumption RJ12 (LOCK) 1.5 A (DC).
  - Max. current consumption via relay clamp 3.0 A (DC), clamps 10-11.
- RS232 interface RS 232 cable (RXD, TXD, GND, Reader present, PC present), 38,400 baud.
- Connecting cable (reader - external MLU antenna) 8-pole, 350 cm, UL stranded wire AWG 26, one side with gated RJ45 plug, one side with crimped JST ZH connector ZHR-8.
- Relay output (via screw clamps) 2.5 mm, can be screwed on from plug side, relay contact: 12 V, 3 A, 60 W, 120 VA, terminals 3 - 5.
- Door contact input (via screw clamps) 2.5 mm<sup>2</sup> can be screwed from plug side, terminals 1 and 2.
- RS485 - RS485 interface - cable to the E-LINE by DIRAK Gateway, (+/A, -/B), 38,400 baud (MLU3000).
- TCP/IP Ethernet interface, 10/100 Autosense, up to 100 MBit/s (MLU5000).
- Power off when open/closed: depending on the electronic lock connected, this is configured in the Administration Suite Config Tool.
- Memory capacity for transponder cards 2000: + 1 master transponder.
- Memory capacity for events: 500 (ring memory).
- Memory capacity for time profiles: 30.
- Integrated real-time clock with buffering of up to 60 min at 25 °C.
- Temperature range -20°C – +70°C.

Type	Order No.	UP
MLU 3000	01.180.231.9	1 unit
MLU 5000	01.180.232.9	1 unit

## Option 2: Potential-free contacts

### @Lock™ "potential-free contacts" system concept

Swing handles from the @Lock™ MLR1000 range are suitable for connecting electromechanical swing handles to existing building management systems or local identification systems, in addition to complementing @Lock™ BlueID or rack monitoring systems.

The handle can be opened as soon as its potential-free contacts are activated or a voltage of 12-24 V DC is supplied. Following activation, the MLR1000 switches to ready-to-open status.

During this period, the user can open the MLR1000 by pressing a button.

The LED at the top of the handle offers permanently high luminosity with a low power consumption. As a result, the lock status can be determined quickly, even from a distance of several meters.

The information display integrated into the handle is backlit and allows customer-specific information such as the cabinet row, cabinet number etc., to be added for further clarity.

## Technical data – @Lock™ MLR1000

### Handle electronics

Two-part hardware design	MLR1000 and MLR1000 Box
--------------------------	-------------------------

Visualization	Status LED
---------------	------------

### MLR1000 Box

Housing	Interface unit, plastic housing can be fixed with screws or self-adhesive pad
---------	---

Power supply	12 V DC ± 10 % via screw clamps
--------------	---------------------------------

Standby current (system ready)	40 mA (DC)
--------------------------------	------------

Max. current consumption (with connector tightening)	410 mA (DC)
--	-------------

Operating mode	100 % ED
----------------	----------

Relay control	12V DC
---------------	--------

Operating time	Max. 3 seconds
----------------	----------------

Contact output	250 V AC, 2 A
----------------	---------------

Installation position	Vertical
-----------------------	----------

Connection type	Screw clamps, 2.5mm <sup>2</sup>
-----------------	----------------------------------

Connecting cable (reader - handle electronics)	8-pole, 350 cm, UL stranded wire AWG 26, one side with gated RJ45 plug, one side with crimped JST ZH connector ZHR-8
--	--

Temperature range	-20°C – +70°C
-------------------	---------------

# Vertiv™ Knürr™ Rack Accessories Catalogue

	@Lock™ MLR5000	@Lock™ MLR3000	@Lock™ MLR1000
Software necessary	Admin Suite	Admin Suite	Custom
E-Line Administration	Yes	Yes	No
Suite Software	Yes	Yes	Yes
External emergency	Transponder card	Transponder card	Dependent on customer's equipment and software
Identification	Yes (in combination w. Administration Suite)	Yes (in combination w. Administration Suite)	Dependent on customer's equipment and software
IP support	Yes (in combination w. Administration Suite)	Yes (in combination with Gateway and Administration Suite)	No
Log files	Yes (in combination w. Administration Suite)	Yes (in combination w. Administration Suite)	Dependent on customer's equipment and software
Four-eyes-principle	Eline by Dirak	Eline by Dirak	Eline by Dirak
Stand alone	Possible	Possible	No

Type	Model	Order No.	UP
@Lock™ MLR1000	for Knürr Miracel™ and Knürr DCM™ front door	<b>01.180.224.9</b>	1 unit
@Lock™ MLR1000	for twin doors (e.g. Knürr DCM™ rear door)	<b>01.180.225.9</b>	1 unit

## Features

- Guarantees fault-free operation.
- Early disturbance detection.
- Incident logging.
- Automatic monitoring simplifies maintenance.
- Activates countermeasures in the event of a malfunction.
- Central status control of: filters, paper, toner, meter readings, inspection intervals, and much more.
- Sensors can be connected in any arrangement.

## Vertiv™ Knürr™ RMS III

### Constant Reliability with Remote Monitoring

#### System Reliability and Availability

System and network management requirements mean the systems' ambient conditions must be monitored. Compliance with the required ambient parameters is extremely important for successful/continuous operation of high-grade components.

#### Management Software

Inadmissible fluctuations in temperature or humidity often cause hardware defects. Constant automatic monitoring of these parameters is therefore a basic requirement for safeguarding operability. All the relevant data can be recorded and forwarded directly to a higher-level management system, e.g. Nagios Liebert® Trellis™ with the RMS III.

#### Alarm Consolidation and Control

Simply recording data does not suffice to ward off damages. When faults occur, short response times are aided by the monitoring system triggering actions automatically (e.g. activating additional fans).

#### Fast Response

When defined incidents occur, the RMS III can immediately send a message as an "SNMP trap" to the management system or directly as an e-mail to a technician or a SMS gateway.



## Vertiv™ Knürr™ RMS III

### Description

- Compact construction - Zero unit solution (for mounting outside the 19" installation area).
- Cost-effective orderly installation with Plug & Play concept.
- Convenient cabling with RJ11 and/or screw terminal sensor connections.
- TCP/IP connection via Ethernet.
- Configuration via SNMP and Web-Browser.
- Web access is password-protected and optionally encrypted (https).
- 3 different user levels.
- Freely programmable filter system (Boolean logic) for implementing all alarm conditions.
- Compatible with standard network-management and infrastructure-management systems such as Liebert® Nform or Open-Source Software.

- Sensors for monitoring all relevant environmental influences (optional).
- Internal power supply for sensor equipment (no additional power supply necessary).
- Alarms via relay, network management or e-mail (SMTP).
- Support from Modbus/TCP.
- System time balancing with NTP servers.
- Support of MQTT

### Technical data

- 1 x Ethernet connector 10/100 Mbps.
- 6 x 1-Wire
- 12 x digital on/off connector.
- 1 x RS485 connector.
- Up to 40 sensors.
- 4 digital relays outputs (50V).
- Operating voltage: 12 VDC.

### Compliance

- CE Marking compliant with
  - 2014/35/EU Low Voltage Directive (LVD)
  - 2014/30/EU Electromagnetic Compatibility Directive (EMC)
  - 2011/65/EU RoHS2 Directive.

### Color

- RAL 7021, dark-grey.

### Scope of delivery

- 1 x Knürr™ RMS III.

### Optional Items

- 1 x Power supply. e.g.: 01.180.035.9000001
- 1 x 19" Mounting Shelf for RMSIII 06.108.428.8001

### How supplied

- Single parts.



LUF20069

W	H	D	Model	Order No.	UP
350	42	170	RMS III	06.108.401.8	1 pc

## Combined sensor Temperature Humidity "ECO" (RMSIII)

### Quick and easy installation

- Insensitive to disturbances.
- No additional power supply required.

- Accuracy: 2%.
- To be connected to 1-wire port.

### Technical data

- Temperature measurement range: 0...60°C.

### Scope of delivery

- 1 x sensor.

Model	Order No.	UP
ECO	06.108.421.9	1 unit

### Dimensions in mm:

W = Width	h = Installation height	U = Standard rack unit	kg = Weight	Conversion:
H = Height	d = Insertion depth	(1 U = 44.45 mm)	1 mm = 0.03937 inch	
D = Depth	L = Length	UP = Packaging unit	1 kg = 2.2046 pounds	



RMS20019

### Temperature Humidity Sensor RMS III

- **Avoids dew**
  - Insensitive to disturbances.
  - Additional power supply required.
- **Technical data**
  - Air measurement range 30 – 90 %.
  - Accuracy: 2%.
  - To be connected to 1-wire port.

- **Scope of delivery**
  - 1 x sensor with RJ45 port.

Order No.	UP
06.108.411.9	1 unit



RMS20006

### Door Contact Sensor RMS III

- **No additional magnet required**
  - Magnet bridge sensor works on all magnetic conductive materials (no special mating part required).
  - Can also be used for monitoring side panels and roof.
- **Technical data**
  - Temperature range: -20° C to +70° C.
  - Switching voltage, max. 200 VDC.
  - Switching current, max. 500 mA.
  - To be connected to digital IN port.

- **Scope of delivery**
  - 1 x sensor with 4 m connection cable.
  - 1 x mounting kit.

Order No.	UP
06.108.115.9	1 unit



### Water Sensor RMS III

- **Conductive water spot sensor**
  - Detects presence of water.
- **Technical data**
  - Operating voltage: max. 24 VDC.
  - To be connected to 1-wire port.

- **Scope of delivery**
  - 1 x sensor with 2 m connection cable.
  - 1 x mounting bracket.

Order No.	UP
06.108.418.9	1 unit

### Smoke Detector RMS III

- **Sends signal to IT Department**
  - Optical smoke detector with VdS approval.
  - For early fire detection with smoke emission.
  - Power supply provided via RMS compact.
  - Standard cable length, 4 m.

- **Technical data**
  - Operates between -20°C and +75°C.

- **Scope of delivery**
  - 1 x sensor with 4 m connection cables.
  - 1 x mounting kit.
  - To be connected to digital IN port.

W	H	Order No.	UP
Ø 90	75	06.108.211.9	1 unit



## Power over Ethernet (PoE) Update Set RMS III

- **Save on cabling**
  - Saves on costly power supply installations (e.g. WLAN access points) or enables centralized UPSs for decentralized equipment (e.g. IP phones).
  - Using the PoE update set, the RMS can therefore support installations with the corresponding UPS concepts and/or non-standard IDF room.
- **Technical data**
  - Input: 48 V DC, 400 mA.
  - Output: 12 V DC (12 W).
  - Operating temperature: 0° to 40° C.
  - Storage temperature: -40° to 70° C.
  - Operating air humidity: 10% to 80% rel. humidity.
- **Dimensions**
  - Length: 81 mm.
  - Width: 52 mm.
  - Height: 28 mm.
- **Approvals**
  - EMI: FCC Part 15 Class B, CE Class B.

- Safety: UL, TUV.
- **Scope of delivery**
  - 1 x PoE adapter.
  - 1 x mounting bracket for easy attachment to the RMS (similar to the classic power supply unit mounting bracket).
- **How supplied**
  - In sets.

Model	Order No.	UP
PoE update set	06.108.230.8	1 unit

## Vibration Sensor RMS III

- **Protection against vandalism**
  - Detects vibrations.
  - Theft prevention.
  - Reset possible via Viewer software.
- 1 x sensor with 4 m connection cables.
- To be connected to digital IN port.

Order No.	UP
06.108.213.9	1 unit

## Passive Infrared Movement Sensor RMS III

- **Security**
  - Room monitoring with state-of-the-art technology.
- **Technical data**
  - VdS approval: Classes A + B.
  - Range of volumetric lens: 2 – 16 m.
  - Long lens range: 29 – 50 m.
  - Curtain lens range: 17 – 30 m.
  - Manipulation monitoring.
  - Digital fault evaluation.
  - Corner or wall mounting.
  - To be connected to digital IN port.

Order No.	UP
06.108.214.9	1 unit

## RMS III Technical Data

- **Ethernet: 100 Mbit**
- **HTTP**
- **DHCP**
- **SNMP v1**
- **SNMP v2/3: future**
- **SNMP Trap**
- **Trap destinations: 5**
- **SNTP**
- **SMTP**
- **SMTPv3 TLS**
- **E-mail Destinations: 5**
- **SMS/ netGSM /RS232**
- **SMS Destinations: 5**
- **Logger**
- **Logger records: 250.000**
- **MQTT**
- **IPv6**
- **Certificate Upload**
- **DO Local conditions**
- **1-Wire sensors: 16**
- **1-Wire UNI support**
- **RS-485 support**
- **RS-485 sensors: 24**
- **Modbus /TCP**
- **Email Alarm reminder**
- **Email Periodical Status**
- **Power Input 1: 9-30V**
- **DI (Digital Inputs): 12**
- **DO (Digital Outputs): 4**
- **DO max load: 50V/1A**
- **Operating temperature: -30-85°C**

## Carbon Monoxide Alarm Sensor RMS III

- **Detects smoke-free gases and triggers an alarm**
  - Used for detecting carbon monoxide emitted by burning fire-retardant cables.
  - Sends signals carbon monoxide to the RMS and triggers an alarm.
  - Standard cable length, 4 m.
- **Technical data**
  - Operating voltage: 12 VDC ( $\pm$  20 %).
  - Power consumption: approx. 190 mA (idle) approx. 280 mA (alarm).
  - Sensitivity: 100 ppm CO.
  - Ambient temperature: -15° C to 40° C.
  - Piezo alarm: approx. 85 dB(A) at 3m away.
- Protection rating: IP 20.
- Switching output 12 V DC: Max. 170 mA.
- Relay output: Changeover contact, max. 5 A 230 V DC, max. 5 A 30 V DC.
- Reset: automatic when the gas concentration falls below sensitivity level.
- To be connected to digital IN port.

- **Color**
  - White.
- **Scope of delivery**
  - 1 x sensor.
  - 1 x sensor connection cable.
  - 1 x Mounting kit.
  - 1 x Instructions
- **How supplied**
  - In sets.

Model	Order No.	UP
Carbon monoxide alarm sensor	06.108.211.8	1 unit

## New in RMS III

- **Supports broad range of sensors**
  - 1-wire, Digital, RS485 sensors
  - 4 Relays outputs
- **Features**
  - Boolean Logic
  - State-of-the Art secure network protocols
  - Accessfilter (Device Firewall)
  - Cloud Interface already built in (MQTT)
  - Screw Terminal Connectors for Digital Sensors
  - Local Log

**General**

- General setup
- Security
- SNMP
- Email
- GSM
- Log & Time
- Portal
- MQTT
- Sensors
- Inputs
- Inputs Logic
- Outputs
- Virtual Outputs
- System

Version: 3.3.6

### RMS3 Compact

GENERAL

#### Sensors

Name	ID	Current Value	Safe Range	Hysteresis	Alarm Alert
Sensor 240	1280	20	% 0.0 .. 100.0	0.0	Disabled
Sensor 241	13322	2	WLD 0.0 .. 0.0	0.0	Disabled
Sensor 242	19208	27.5	%RH 10.0 .. 60.0	0.0	Disabled
Sensor 243	21316	23.6	°C 10.0 .. 60.0	0.0	Disabled
Sensor 244	25746	2.5	°C 10.0 .. 60.0	0.0	Disabled

#### Digital Inputs (DI)

Name	ID	Current Value	Alarm Alert
Binary 1	1	0(Off)	Disabled
Binary 2	2	0(Off)	Disabled
Binary 3	3	0(Off)	Disabled
Binary 4	4	0(Off)	Disabled
Binary 5	5	0(Off)	Disabled
Binary 6	6	0(Off)	Disabled
Binary 7	7	0(Off)	Disabled
Binary 8	8	0(Off)	Disabled
Binary 9	9	0(Off)	Disabled
Binary 10	10	0(Off)	Disabled
Binary 11	11	0(Off)	Disabled
Binary 12	12	0(Off)	Disabled
Binary Logic 13	13	0(Off)	Disabled
Binary Logic 14	14	0(Off)	Disabled
Binary Logic 15	15	0(Off)	Disabled
Binary Logic 16	16	0(Off)	Disabled
Comm Monitor 1	123	0(Off)	Disabled

#### Digital Outputs (DO)

Name	ID	Current Value	Mode
BinOut 1	151	0(Off)	Manual
BinOut 2	152	0(Off)	Manual
BinOut 3	153	0(Off)	Manual
BinOut 4	154	0(Off)	Manual

**Download**

SNMP MIB: [MIB](#)  
 SNMP Object Identifier: [OID](#)  
 XML Schema Definiton: [XSD](#)

**Terminal Config (TCP Setup)**

Connect with telnet to: [10.88.1.60 Port 99](#)



**Vertiv.com** | Vertiv Infrastructure Limited, George Curl Way, Southampton, SO18 2RY, VAT Number: GB188146827

© 2022 Vertiv Group Corp. All rights reserved. Vertiv™ and the Vertiv logo are trademarks or registered trademarks of Vertiv Group Corp. All other names and logos referred to are trade names, trademarks or registered trademarks of their respective owners. While every precaution has been taken to ensure accuracy and completeness here, Vertiv Group Corp. assumes no responsibility, and disclaims all liability, for damages resulting from use of this information or for any errors or omissions. Specifications, rebates and other promotional offers are subject to change at Vertiv's sole discretion upon notice.

MKA4L0CATKRA (R11/22)