

**Canon**

# NETWORK VIDEO SOLUTIONS

*WebView  
Livescope*



Network Cameras with Built-in Servers  
VB-C50i / VB-C50iR / VB-C50Fi / VB-C50FSi

Analog PTZ Cameras  
VC-C50i / VC-C50iR

Network Camera Server  
VB150

Network Video Recording Software  
VK-64 Ver. 1.1 / VK-16 Ver. 1.1

Monitoring Software

WebView Livescope MV Ver. 2.1

WebView Livescope MV Ver. 2.1 LE

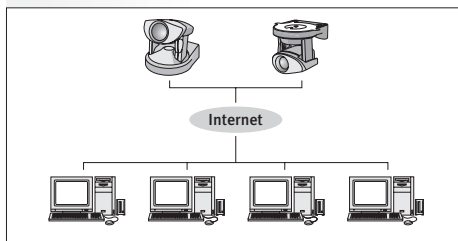
Viewer for Pocket PC

# Canon WebView Livescope: You owe it to your business to find out more

## What is Network Video Solutions?

### Transmit

Network Video Solutions is simply the transmission of high-quality video images through the Internet or a LAN connection. This may involve an individual viewing scenes from multiple locations, many individuals viewing a single location or a combination of the two.



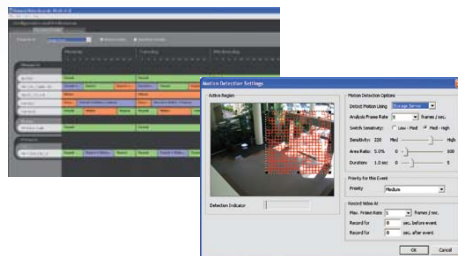
### Close the Distance

Network Video Solutions literally puts you and/or the information you wish to broadcast in several places at once. When physical distance ceases to be a barrier, the possibilities are limitless.



### Record

Anything that's transmitted can be recorded and stored to be viewed again at any time, a crucial factor in safety and security applications.



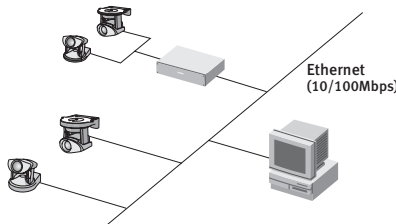
### Share

Network Video Solutions can accommodate multiple viewers and multiple image locations, linking people in a way no other technology can offer.



### Flexibility

Canon systems make installation, configuration and maintenance easy, so you'll be up and running quickly and worry-free.



### Save

Putting Canon's Network Video Solutions to work for you will boost the productivity of your business immediately, for cost and time savings that go straight to your bottom line.

## Why is Canon superior?

### Over 60 Years of Excellence

With over 60 years of industry-leading experience and a host of groundbreaking technical innovations to its credit, Canon richly deserves its reputation as maker of the world's most advanced cameras and photographic equipment.

### Legendary Optics

Canon lenses are the choice of professional photographers all over the world. They feature proprietary technology that delivers sharp resolution, high color fidelity, crisp, fast focus and powerful, seamless zooming.



### High-resolution Images

Each camera features a CCD sensor built to Canon's exacting specifications, ensuring high-resolution images in a variety of motion patterns and lighting conditions.



### Ultimate Performance and Reliability

Canon's excellent reputation is a direct result of the high performance and reliability of its products. Canon's Network Video Solutions is designed to perform long term in demanding situations with minimal maintenance.

### One-stop Solution

From network-ready cameras to servers to software, Canon offers a complete, fully integrated system that's ready to go to work.

### A Name You Can Trust

Canon is a solid industry leader, earning the trust of millions for over 60 years. We are fully committed to the needs of our customers today, tomorrow and well into the future.



more.

# How can the system work for you?

## Medical Facility

Monitor multiple locations to provide the highest quality care and security in facilities where quick reactions are essential.



## Retail Store

Strategically located cameras can dramatically improve security and allow employees to provide more prompt customer service.



## Construction Site

Oversee security, safety practices and project status wherever you are. Ideal for client presentations as well.



## Museum or Gallery

Constant surveillance in multiple locations can reduce staffing requirements and give you greater peace of mind.



## Teleconferencing

Conduct high-quality meetings with colleagues and clients all over the world for unmatched convenience and substantial cost savings.



## Distance Learning

Broadcast lectures and classroom sessions to remote students. WebView's crisp images and superior camera control make students feel as if they're in the room.



## Tourism

Promote travel destinations and attractions with live views available to prospective visitors anywhere in the world.



## Traffic Reports

Newsrooms can monitor key sites to give accurate, real-time traffic reports.



# CANON WebView Livescope SYSTEM

## NETWORK CAMERAS WITH BUILT-IN SERVERS



VB-C50i



VB-C50iR



VB-C50Fi



VB-C50FSi

## ANALOG PTZ CAMERAS



VC-C50i



VC-C50iR

## NETWORK CAMERA SERVER



VB150

## SOFTWARE



Network Video Recording Software  
VK-64 Ver. 1.1/  
VK-16 Ver. 1.1



WebView Livescope  
MV Ver. 2.1



WebView Livescope  
MV Ver. 2.1 LE



Viewer for  
Pocket PC



Viewer for Java



Viewer for PC

## NETWORK CAMERAS WITH BUILT-IN SERVERS

The VB-C50 series boasts high-quality images and a high frame rate. They respond to all of your monitoring needs with a wide array of features such as the 26x optical zoom, the most powerful in the industry, motion detection and low-light features.

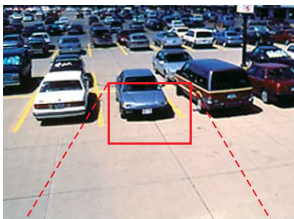
NETWORK CAMERA

# VB-C50 Series

### Features common to the VB-C50 Series

#### 26x Optical Zoom/12x Digital Zoom

1x (wide-angle end)



The camera's genuine Canon 26x optical zoom lens offers the highest optical zoom magnification in the industry, making these network cameras the perfect choice for monitoring large facilities.

※ captured image

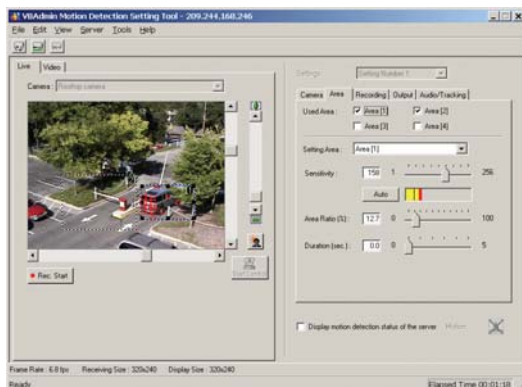


4x

26x (maximum zoom)

#### Sophisticated Motion Detection

Four areas can be selected for motion detection with the ability to set sensitivity, area ratio and duration of detected movement. These settings can be independently set in each of the four areas.



Motion Detection Setting Tool (VB Administration Tool)

NEW VB-C50i



<Item code: 9781A008>

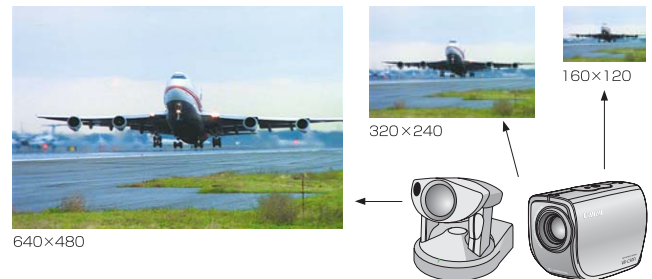
NEW VB-C50iR



<Item code: 9782A007>

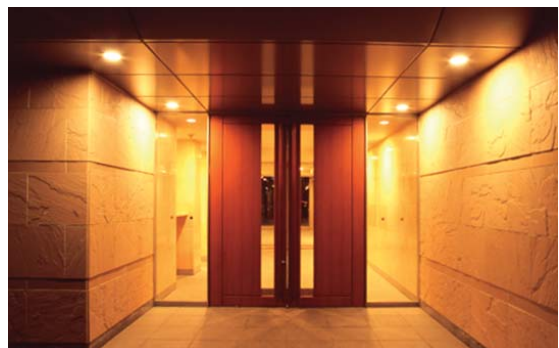
#### 30 fps Image Capture

You'll capture and transmit clear, well-focused video with excellent image quality: 30 fps, 640 x 480 pixels. Viewers with slower connections or video-enabled cell phones may not want or be able to receive the camera's highest-quality video, given its larger file size. For customization and flexibility, the camera simultaneously broadcasts in 3 file sizes from which the viewer can select. The system can accommodate up to 50 clients.



#### Excellent Low-light Performance

The camera will capture clear color images in dim lighting all the way down to a single lux thanks to a highly-sensitive CCD, bright lens and slow shutter capability. Images are further enhanced with automatic noise reduction in both bright and dim light.



**Compatible viewers**



\*1, \*2, \*3 Some features cannot be operated.

**NEW VB-C50FSi**

**VB-C50Fi**



<Item code: 0777B002>



<Item code: 0220B002>

**Shade Correction**

The Shade Correction feature increases the brightness of only the shaded areas, leaving lighter areas untouched.



Original



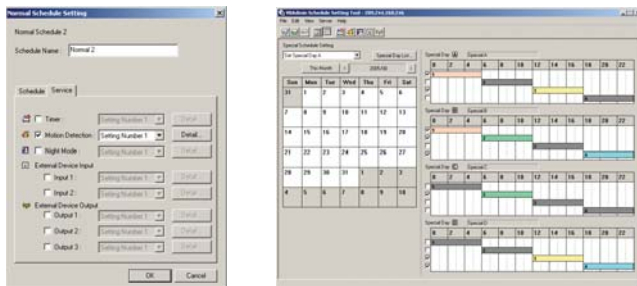
Backlight Compensation



Shade Correction

**Schedule-setting Tool**

The schedule-setting tool automatically provides image storage, motion detection, or input/output services with external devices such as an alarm on specified days or times. Various settings are possible, allowing the numerous features to be fully utilized.



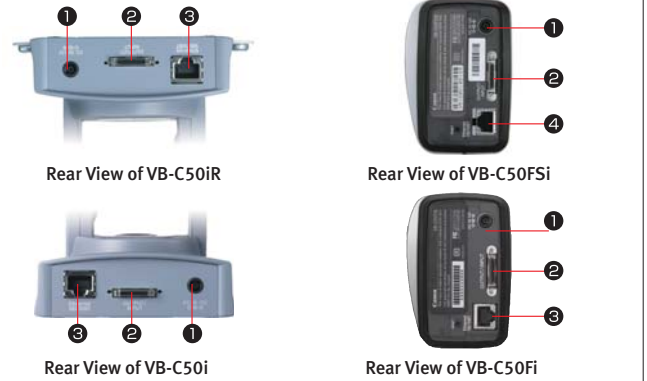
**Monitor and Control via a Mobile Phone**

Static images can be viewed and cameras can be controlled on cell phones featuring web browser capability.



\*Displays may vary depending on the cell phone model.  
\*Only the preset positions can be controlled in the VB-C50FSi and VB-C50Fi.

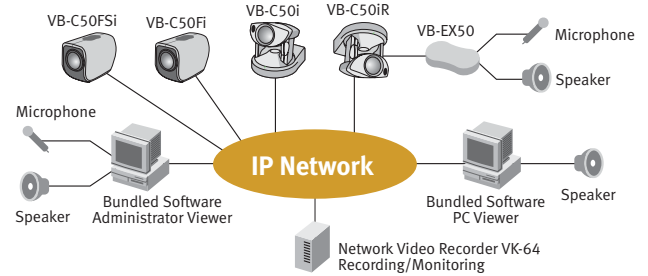
**Nomenclature**



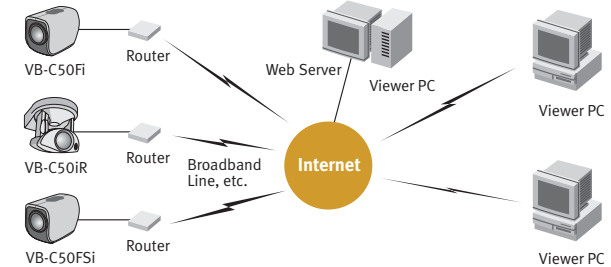
① DC In Terminal ② Multi-terminal Input ③ Ethernet (10/100Mbps Automatic Switching)  
④ PoE (10/100Mbps Automatic Switching)

**Sample System Configurations**

**LAN/WAN/Internet Environment**



**Internet Service Provider Environment**

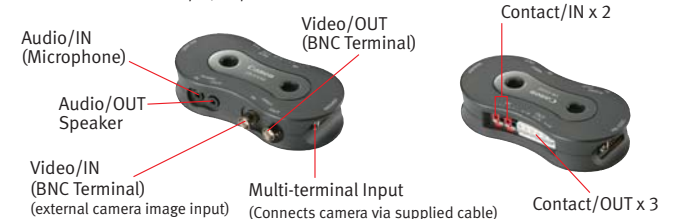


**VB-C50 Series Option**

**Multi-terminal VB-EX50** <Item code: 9783A003>

The optional VB-EX50 greatly expands the camera's flexibility. An audio out terminal allows you to connect an external speaker. You can plug in an existing analog camera or output a signal directly to a monitor. External devices, such as door sensors and alarms, can also be connected.

※Audio data cannot be input/output on the VB-C50Fi.



**Audio Playback Function**

A pre-selected audio file can be played at a scheduled time or when triggered by an event. For example, a department store can alert customers to a special sales promotion every 3 minutes. In a security monitoring example, you can record your own message, such as "We will be right with you", and have it played when someone approaches the reception desk of an office building.

## NETWORK CAMERAS WITH BUILT-IN SERVERS

VB-C50i and VB-C50iR are equipped with sophisticated features such as two-way audio, pan, tilt, zoom and motion detection, as well as auto tracking and auto touring, resulting in an exceptional monitoring system.

- 26x Optical Zoom /12x Digital Zoom
- Pan and Tilt
- Two-way Audio
- 340k Effective Pixels
- Motion Detection
- Auto Tracking
- Auto Touring
- Low-light Capability
- Built-in IR Illuminator



**NEW VB-C50i**  
 <Item code: 9781A008>



**NEW VB-C50iR**  
 <Item code: 9782A007>

### Sophisticated features of the VB-C50i /VB-C50iR

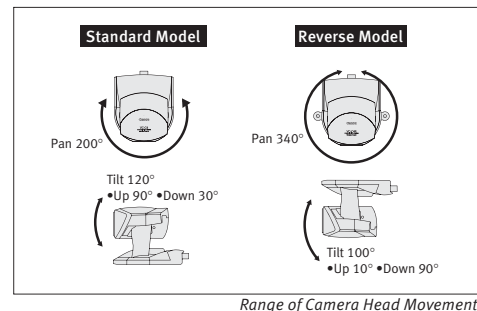
#### ■ Preset Tour

A “tour” can be programmed so that the VB-C50i or VB-C50iR automatically moves from one preset viewing angle to another at specified intervals. A tour can be continuous or conducted on demand. This can be especially helpful when monitoring a large area, such as a parking lot or storage facility.



#### ■ Highest Pan and Tilt Performance in its Class

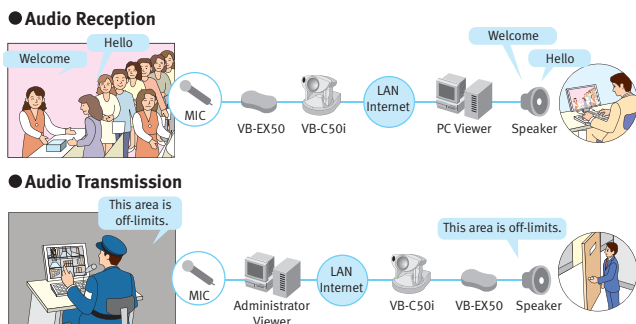
The VB-C50i is the best compact PTZ (pan/tilt/zoom) camera in its class with respect to pan angle and speed. With a high pan speed of 1 to 90 degrees per second and a tilt speed of 1 to 70 degrees per second, the state-of-the-art pan/tilt mechanism built into its center ensures a quiet and smooth operating performance.



#### ■ Improved Monitoring with Two-way Audio

A microphone and speaker can be connected using the Multi-terminal Module VB-EX50, allowing immediate action to be taken in emergency situations.

\*Audio input/output cannot be used with the VB-C50Fi.



#### ■ Auto Tracking

Auto tracking gives the camera the ability to pan and tilt once motion is detected and capture this movement automatically.



\*The VB-C50Fi and VB-C50FSi are not equipped with auto tracking.

#### ■ Night Imaging with Infrared Light

A Night Mode with built-in infrared light allows the camera to capture clear black and white images even in complete darkness. An additional external infrared light can also be connected.



\*The built-in infrared light cannot be used with a dome housing.  
 \*The maximum projection of the built-in infrared light is approximately 9.8 ft (3m).

The VB-C50Fi achieves stylish and stable monitoring with a sophisticated, compact casing. The newly introduced VB-C50FSi is equipped with additional features such as two-way audio and PoE, allowing you to select the model you want based on your needs.

- 26x Optical Zoom /12x Digital Zoom
- PoE
- Two-way Audio
- 340k Effective Pixels
- Motion Detection
- Low-light Capability



**NEW** VB-C50FSi  
<Item code: 0777B002>

- 26x Optical Zoom /12x Digital Zoom
- 340k Effective Pixels
- Motion Detection
- Low-light Capability



VB-C50Fi  
<Item code: 0220B002>

### PoE (VB-C50FSi)

Power over Ethernet (PoE) allows the VB-C50FSi to receive both data and power through a single Ethernet cable. Since a power cable is not required, this allows easier installation at sites not readily accessible to AC power outlets. Perfect for hard-to-reach locations (such as ceilings or rooftops) both indoors and outdoors, PoE eliminates the cost of running expensive power cabling to each camera, reducing the overall cost of installation.

### Easy Audio Recording and Playback Feature

Image and audio data stored in the camera's internal memory can be downloaded to a PC using the VB Collector 3.0 (included software), allowing thumbnail display, animation display and audio playback. A pre-selected audio file can be played at a scheduled time or when triggered by an event. For example, a department store can alert customers to a special sales promotion every 3 minutes. In a security monitoring example, you can record your own message, such as "We will be right with you", and have it played when someone approaches the reception desk of an office building.

\*Audio input/output cannot be used with the VB-C50Fi.

### Easy Installation (VB-C50Fi/VB-C50FSi)

The VB-C50Fi/VB-C50FSi can be installed in various locations such as a ceiling, wall or floor. The compact dome attachment also lets you install the cameras either indoors or outdoors.



# NETWORK CAMERA SERVER

The VB150 camera server has superior expandability, and is capable of transmitting live images through the Internet and Intranet. Images from Canon's VC-C50i/VC-C50iR cameras as well as other cameras can be transmitted.

## NETWORK CAMERA SERVER VB-150

Firmware Version 1.1  
(Item Code: 8346A002)



### Compatible Viewers



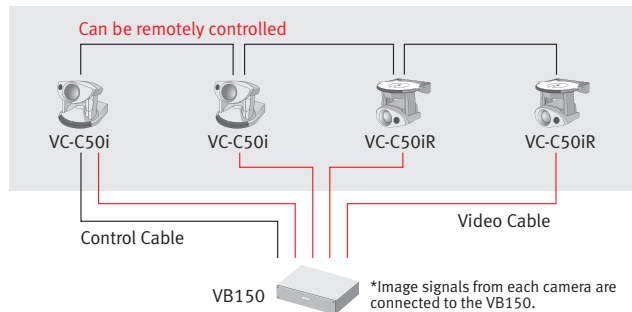
\*1, \*2, \*3 Some features cannot be operated.

### High Image Quality and High Frame Rate

The VB150 captures images at a maximum of 30 fps and uses Motion-JPEG for image compression. The image quality and capture rate can be set freely on the transmitting side.

### Up to Four Cameras Can Be Connected

Up to four Canon communication cameras can be completely controlled by cascading; all other general video cameras (NTSC) can also be installed. Images from up to four cameras can be displayed and recorded simultaneously with the Network Video Recorder VK-64/VK-16.

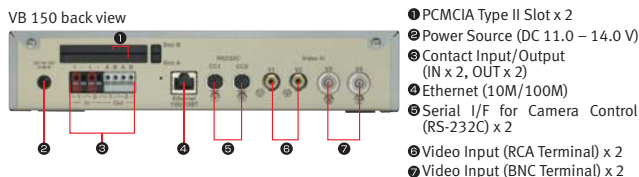


### Superior Camera Control

By setting the visible range, your camera can control the areas you want to show and display them. By setting the "home position," the camera moves to the specified position when there is no controller, giving you additional flexibility.

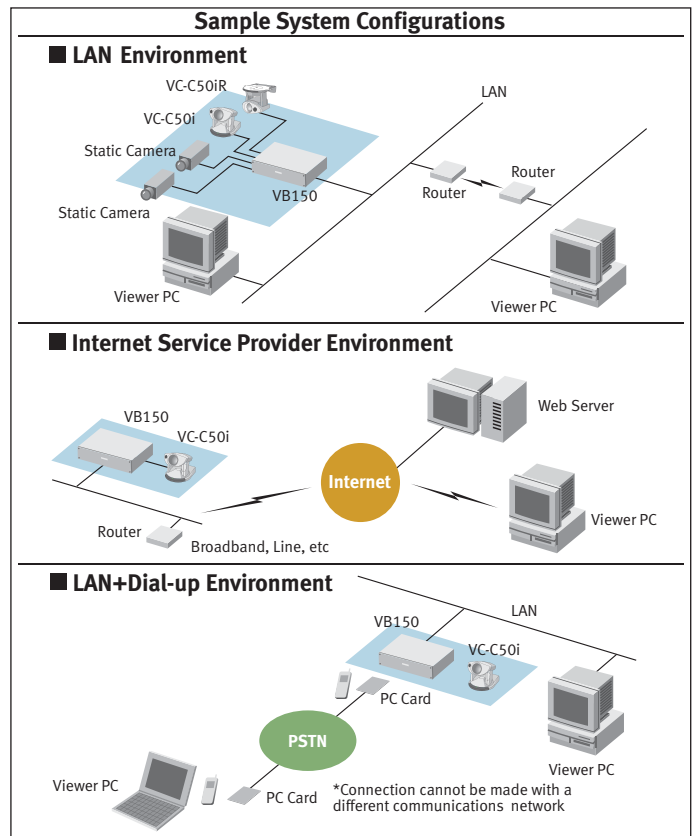
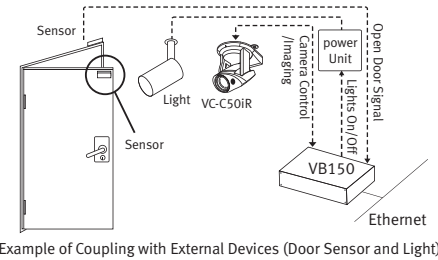
### Excellent Server Features

The VB150 contains both a web server and an FTP server. Access can be limited by user name and password or IP address. Images can be transmitted simultaneously to up to 50 users. Constant access can be maintained from the VB150 side by the "network connection feature" and "automatic dialing (PPP transmission) feature," which transmit packets at regular intervals.



### Expandability

A modem card or memory card can be attached via the card slot. Sensor-triggered images or images captured on schedule may be stored on the memory card (sensor-triggering and scheduling can be used simultaneously). Furthermore, due to input/output via two external contacts per unit, external devices can be turned on and off. Abnormalities and access conditions can be stored as log data, then forwarded by e-mail to specified addresses.





## ANALOG PTZ CAMERAS

These analog PTZ cameras are equipped with high magnification, high sensitivity and night mode. They are high-performance cameras that improve monitoring capability.



**VC-C50i**

<Item Code: 0667B001>



**VC-C50iR**

<Item Code: 0668B001>

26x Optical Zoom  
/12x Digital Zoom

Pan and Tilt

340k Effective  
Pixels

Low-light  
Capability

Built in  
IR Illuminator

### Image Capture Even in the Dark, Minimum Illumination of Only 1 Lux (at 1/30 Shutter Speed)

With a fast lens and high-sensitivity CCD with 680K pixels, these cameras improve image-capturing performance in low-light environments, improving monitoring capability.

### Night Mode Feature and Built-in Infrared Light

A Night Mode with built-in infrared light allows the camera to capture clear black and white images even in complete darkness. An additional external infrared light can also be connected.

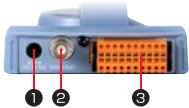
\*The built-in infrared light cannot be used with a dome housing.

\*The maximum projection of the built-in infrared light is approximately 9.8 feet (3 m).

### 26x Optical Zoom/12x Digital Zoom

These cameras are equipped with a 26x optical zoom lens (9-group, 11-element multi-group configuration), which makes it possible to capture clear, high-resolution images. In addition, the large aperture of F1.6 is the fastest in its class.

#### Nomenclature



- 1 DC In Terminal
- 2 Video Output (BNC terminal)
- 3 Multi-Connector Plug  
(RS-232C Input/Output, S Terminal Output, Contact Input/Output)

#### VC-C50i/ VC-C50iR

#### Interface Adapter VC-EX3 (Supplied)

The VC-EX3 is an adapter that connects the VC-C50i/VC-C50iR multi-connector socket with the RS-232C cable. The connecting terminal is equipped with three terminals: an S-video output, RS-232C output and RS-232C input. A BNC-RCA converter connector is attached.



## VB-C50 Series Bundled Software

### Administrator Viewer with Shade Correction Feature

The dedicated application with quick startup makes it possible to take over camera controlling rights from another user or override visible range limits to control the camera. The administrator viewer allows you to control contact input/addition, the shade correction feature makes the darker image easier to see.



### VB Collector Version 3.0

Image and audio data stored in the internal memory of the network camera are downloaded based on a specified schedule. Image thumbnails and animation can be displayed and audio data can be played using ImageViewer.



### VB Administration Tools

Six tools – the panorama creation tool, view restriction tool, preset setting tool, advanced schedule setting tool, log viewer and administrator viewer – are bundled. Administrator features can be operated at a single source.



\*The panorama creation tool is only for the VB-C50i and VB-C50iR models.

#### ● Panorama Creation Tool

#### ● Schedule Setting Tool

#### ● View Restriction Setting Tool

#### ● Motion Detection Setting Tool

Effective when there is no sensor device

This highly flexible, easy to run program provides a comprehensive solution for all video monitoring and recording needs. Ideal for large-scale locations with multiple cameras, multi-site businesses and any business in need of data custody at remote locations.



## Network Video Recording Software

# VK- 64 Ver. 1.1

# VK- 16 Ver. 1.1

### Remote Monitoring and Recording

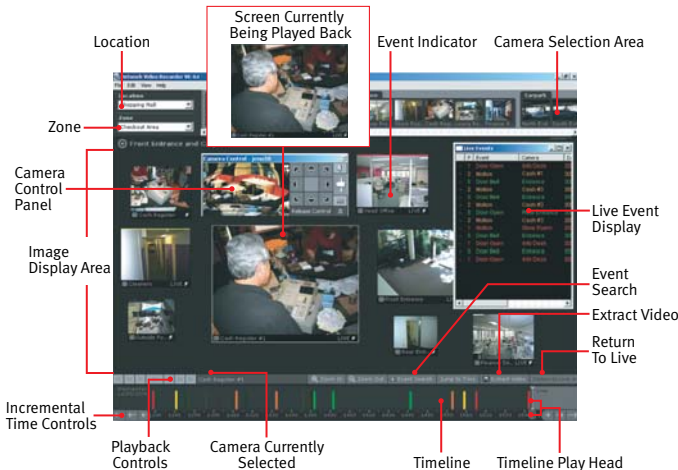
Using an IP network, you can record video captured from a camera server. This remote data custody can serve as a crucial back up in the event of fire or other damage in the server location.

### Highly Flexible System Construction

Unlike conventional systems, this network is constructed with a combination of ethernet cables and a hub. So compared to conventional monitoring systems in which a single video cable directly connects the camera to the recording device, new or additional installation of cameras as well as changing of installation locations can be achieved with more flexibility.

### Customizable Viewing Screen

The number, size and placement of image windows can be freely set in the image display area, allowing you to freely set screen formats that are tailored to your needs and easy to use. Patterned screen layouts can also be stored.



#### •VK Recording server

Stores data of images and events from multiple locations.

#### •VK Viewer

Monitors data of images and events from multiple locations and plays back the data recorded by the recording server.

Network video recording software  
VK-64 v1.1 (Item Code: 9513A011)  
[Recording server and viewer (1 client each)]

Network video recording software  
VK-16 v1.1 (Item Code: 9513A012)  
[Recording server and viewer (1 client each)]

Network video recording software  
Viewer license (Item Code: 9513A013)  
[Additional viewer client]

Network video recording software  
5 viewer licenses (Item Code: 9513A014)  
[5 additional viewer clients]

#### Support Network Camera & Camera Server

VB-C50i  
VB-C50iR

VB-C50FSi

VB-C50Fi

VB150

\*1 The VB150 can connect up to 4 cameras via the simultaneous signal delivery feature.

### Simultaneous Display and Playback of up to 35 Screen Images

When using the SXGA monitor, a maximum of 35 screens of live and recorded images can be displayed or played back simultaneously (up to 24 screens for the XGA). You can play back while recording, as well as simultaneously play back images recorded at different times. You can compare the congestion in areas such as stores at each hour.



• XGA 24 screens (grid: small)



• XGA 6 screens (grid: medium)

### Automatic Layout Switching

Layout Switching automatically switches the video window layout at a specified interval, such as every 30 seconds. It allows you the flexibility of showing critical camera images more frequently. This feature is convenient if you have many cameras connected and cannot display all of them in a single layout.



## Full Screen Mode

Full Screen mode gives you the benefit of showing only the video windows, resulting in a large, easy to view display. You have the option of showing or hiding the camera selector and timeline. Up to 64 cameras (SXGA resolution) or 36 cameras (XGA resolution) can be displayed in this mode.

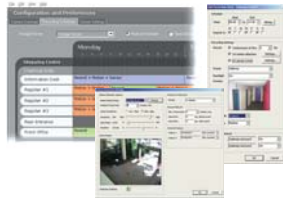


## Records up to 64 Network Cameras

The VK-64 ver. 1.1 software can record video from up to 64 cameras simultaneously to a single storage server. It can also manage 3 storage servers with a single viewer, allowing you to manage recorded video from a total of 192 cameras. The VK-16 ver. 1.1 software is identical to the VK-64 ver. 1.1, but permits video recording from up to 16 cameras on a single storage server.

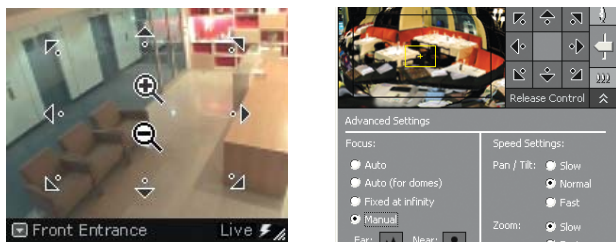
## Various Recording Mode Settings

The software allows unparalleled flexibility in recording, with a wide range of options available to each individual camera. There is a mode to meet every need, including continuous recording triggered by a sensor event at night, pre- and post-event recording, as well as motion detection.



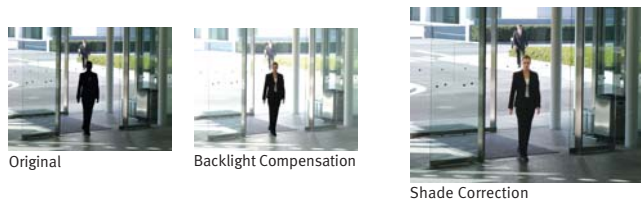
## Versatile Camera Control

Take control of camera directly from the live video window or use camera control panel with captured panorama image for quick and easy control. Presets are also available.



## Shade Correction

The Shade Correction feature increases the brightness of only the shaded areas, leaving lighter areas untouched.



## Convert Recorded Video to QuickTime™

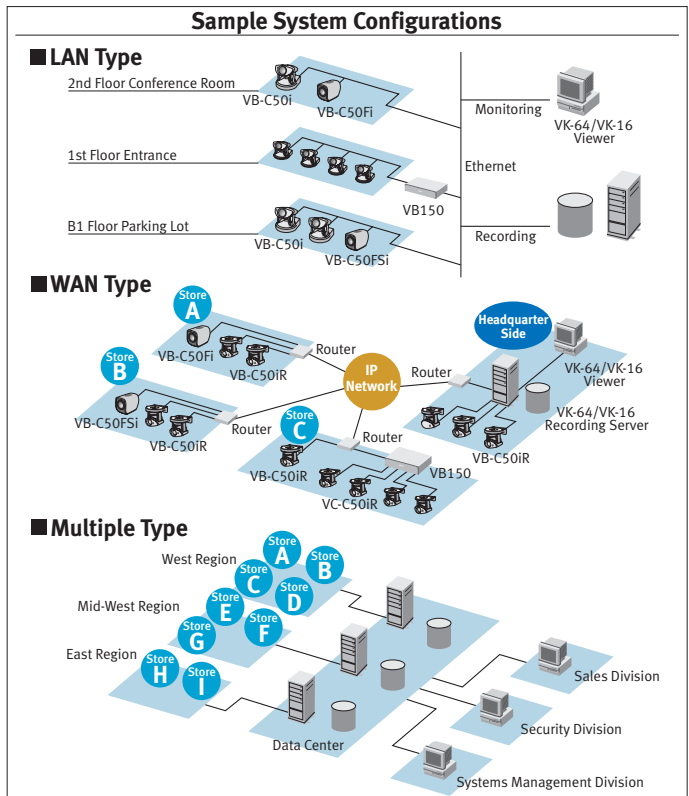
The software makes it simple to convert up to an hour of recorded video into a QuickTime™ file, allowing you to email a viewable video file to recipients.

## Supports Low-Light Features

For recording in dark conditions, you can activate the camera's low-light features through the software by turning on the infrared (IR) cut filter, built-in IR light, or backlight compensation.

**Application/Purpose**

- Remote Recording**  
 The recorded image will remain even when the location of the camera is destroyed.
- Comparative Analysis of Recorded Images**  
 Improve productivity by comparing and analyzing recorded images. It is also useful in improving teaching efficiency and work improvement.
- Remote Monitoring**  
 Ideal for store management purposes, such as verifying customer attraction and queuing conditions.
- Network Monitoring (LAN and WAN Types)**  
 Installation is easy with network monitoring using a LAN, resulting in cost reduction.



**Server Capacity/Traffic/Data Size Comparison Table**

Number of Cameras	Image Size	Frame Size	Network Traffic		Storage Volume	
			Frames/Second	Traffic Capacity	1Day	1Month
1	320 x 240	15KB	1fps	120kbps	1GB	37GB
			5fps	600kbps	6GB	187GB
	640 x 480	50KB	1fps	420kbps	4GB	122GB
			5fps	2Mbps	20GB	608GB
10	320 x 240	15KB	1fps	1.2Mbps	12GB	373GB
			5fps	6Mbps	62GB	1,866GB
	640 x 480	50KB	1fps	4Mbps	41GB	1,216GB
			5fps	20Mbps	203GB	6,081GB

\*These numbers are strictly for reference purposes. The actual numbers will vary depending on the environment, such as the server and the network.

The **WebView Livescope MV Version 2.1** is loaded with optimal features for a variety of business uses, and lets you construct a sophisticated remote monitoring environment simply and comfortably. Simultaneous monitoring from multiple locations is also possible with additional licenses.

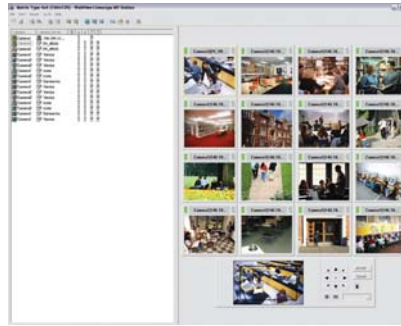
**Multi-screen Monitoring Software**

# WebView Livescope MV Ver. 2.1

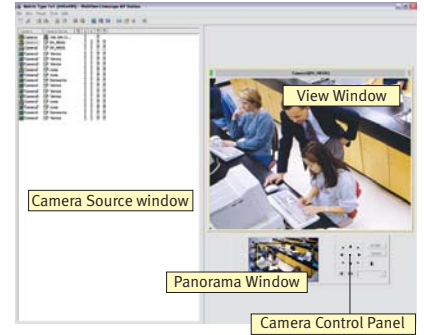
- **MV Manager**  
Automatic creation of monitoring screens tailored to your needs  
Centralized control of multiple network camera servers
- **MV Station**  
Monitoring of camera images from multiple locations  
Management and display of stored images

WebView Livescope MV Version 2.1 (Item Code: 6633A022)  
[MV Manager and MV Station (per client)]

WebView Livescope MV Version 2.1 license (Item Code: 6633A023)  
[MV Station (per additional client)]



Integrated Type A 16-screen Display  
(SXGA 1280 x 1024 UXGA 1600 x 1000)



Integrated Type A

■ Simultaneously displays images from up to 16 locations and makes it possible to register up to 100 camera servers. Select the optimal screen from 37 layouts of 1 to 16 screens.

■ Up to 8 automatic preset tours can be preset for each camera, allowing you to monitor a large area with the minimum number of cameras.

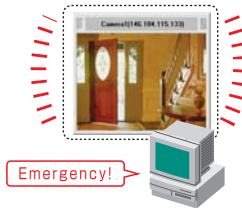
\*Presets set up with the MV Manager will be separate from those set up with the camera server.

■ The Mapping feature allows you to place icons of cameras and sensors on your figure pasted onto the viewer screen and create your own layout.



■ The WebView Livescope MV notifies you of contact input via alarm display and flashing icon. You can also turn external devices such as lights and buzzers connected to the contact output on and off on the screen (input notification and output control of external devices).

■ Camera servers are searched and automatically registered. A monitoring screen tailored to your needs can be easily created by simply answering the Wizard questions.



Distributed Type A

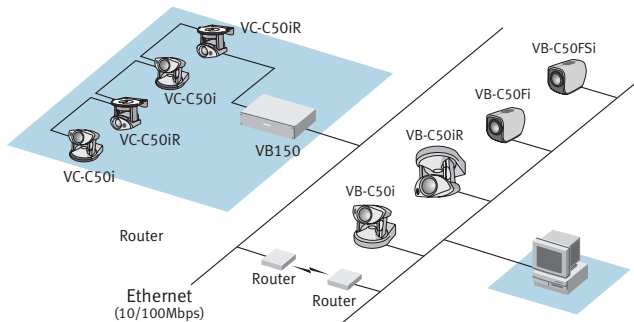
Integrated Type B

■ The auto-switching feature allows you to monitor multiple camera servers efficiently. You can automatically switch up to 10 patterns of the same images that have been set. This feature can also be coupled with the automatic preset tour.

\*Some features cannot be used with the VB-C50 series network cameras or VC-C50i/VC-C50iR

### Sample System Configurations

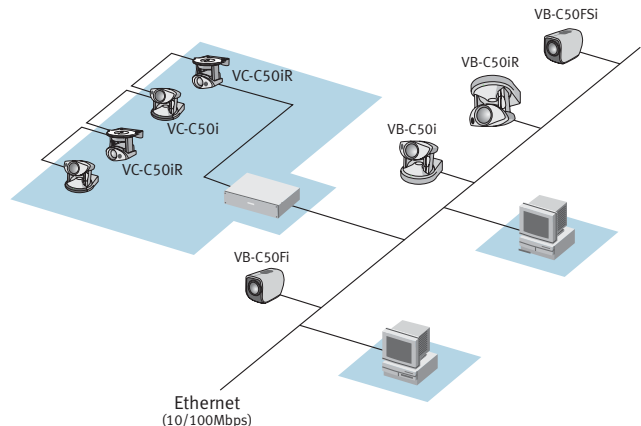
#### Single Location Monitoring



**WebView Livescope MV Ver. 2.1**  
(WebView Livescope MV Manager, MV Station)

This configuration comprises the MV Station, which displays images, and the MV Manager, which administers the monitoring system. It is flexible and expandable, allowing you to easily meet future expansion needs such as adding cameras and changing camera locations.

#### Multiple Location Monitoring



**WebView Livescope MV Station**  
**Version 2.1 License**

The **WebView Livescope MV Version 2.1 LE** is a monitoring software that is simple to operate and cost-effective, allowing you to display images from up to four locations simultaneously. You can control the camera using the panorama window.

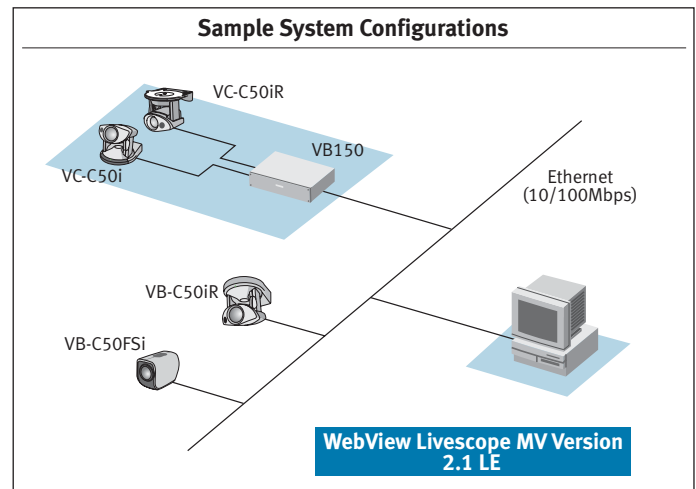
Simple Monitoring Software

# WebView Livescope MV Ver. 2.1 LE

<Item Code: 6633A024>

- The WebView Livescope MV Version 2.1 LE allows you to display up to four images simultaneously. You can select one of the following three viewers: 4 viewers, 1 viewer (large) and 1 viewer (medium).
- A built-in search feature automatically locates camera servers on the same network for quick and easy registration.
- The video relay feature switches video images from up to four cameras on the same server in sequence and displays them simultaneously.

\*Some features cannot be used with the VB-C50 series network cameras or VC-C50i/VC-C50iR communication cameras.



- Simultaneously monitor up to 4 locations on a single screen.
- Panoramic Viewing Image Function.
- Add new camera servers quickly and easily.

PocketPC Software

# WebView Livescope

Item Code: 8957A002  
8957A004 (5-License Pack)

Access and control your network cameras right from your PDA! Supports a wide variety of Pocket PC based PDAs. Available in a single or 5-license pack.

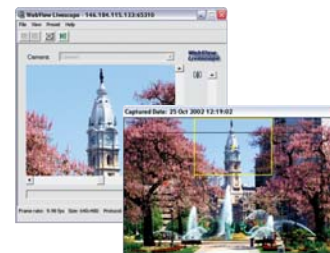
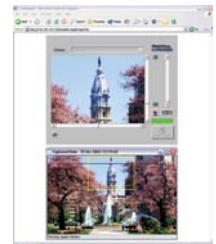
- Full Screen Mode
- Easy Camera Registration



## Bundled Viewer Software

### Viewer for Java

Allows video from the VB-150, VBC50FSi, VB-C50Fi, or VB-C50i/R to be displayed on a standard web browser. This software is automatically downloaded.



### Viewer for PC

Offers faster start-up and a higher video frame rate. Installable for frequent viewers.

## Software Development Kit (SDK)

- Create custom applications that take advantage of all Canon's Network Cameras and Network Camera Servers functionality. The Software Developers kit includes codes for access and control as well as sample applications and checker tools that allow programming and integration. For more information and to request a copy of the Software Developers kit, visit our website at: <http://www.canondv.com/nvs/sdk>

# Specifications

NETWORK CAMERAS		VB-C50i	VB-C50iR	VB-C50Fi	VB-C50FSi
Product code		9781A008	9782A007	0220B002	0777B002
Image delivery features	Protocol	TCP/IP, HTTP, DHCP, FTP, NTP, SMTP			
	Network	Ethernet x 1 (RJ45, 10/100Mbps auto negotiation)			
	Capture frame rate	30 fps (640 x 480)			
	Capture size	160 x 120/320 x 240/640 x 480			
	Compression method	Motion-JPEG (movie, variable image quality), JPEG (still image)			
Camera performance	Simultaneous client access	50(Max.)			
	Image signal	NTSC-compatible (image output when connecting to the VB-EX50)			
	Image sensor	1/4 CCD			
	Pixels	680K pixels (340K effective)			
	Minimum subject illumination	1 lux (at 1/30 seconds)/0 lux (with infrared light projection)		1 lux (at 1/30 seconds)	
	Image capture mode	Normal mode/Night mode			
	Focus	Auto/Manual W: 0.39" to ∞ (0.01 m to ∞), T: 62.9" to ∞ (1.6 m to ∞) (In night mode, W: 0.78" to ∞ (0.02 m to ∞), T: 90.5" to ∞ (2.3 m to ∞) f = .13" to 3.38" (3.5mm to 91.0 mm), F 1.6 to 4.0, 26x power zoom (when capturing images at ∞)			
	Lens	Infrared-cut filter Power on/off			
	Night mode	Light projection distance approximately 9.8ft(3 m)		—	
	Web delivery features	Lens filter diameter	1.45" (37 mm) pitch = .029" (0.75 mm)		
Drive mechanism		Pan +100° / -100° (1°~90°/sec)	Tilt +170° / -170° (1°~90°/sec)	—	—
Server functions		+90° / -30° (1°~70°/sec)		+10° / -90° (1°~70°/sec)	
Maximum transmission rate		www, FTP, Audio, Camera			
Access security features		0.1 to 30 fps (variable)			
External device connection	Connection limitation	Password			
	Camera control administration	Access limitation (user/host address), image connection time, service time, simultaneous connections (up to 50)			
	Preset	20 positions		Yes (exclusion administration, administration permit time, number in queue)	
	Home position feature	Yes			
	Visible range restriction	Yes			
Unit specifications	Image storage capacity	Approximately 15 MB			
	Storage trigger	Scheduled, motion detection, sensor			
	Contact output method	Manual/operated by sensor input			
Unit specifications	Display and management of stored images	External PC (via supplied VB Collector 3.0)			
	Size	4.11"(W) x 5.12"(D) x 4.31"(H) (104.6 mm x 130.3 mm x 109.7 mm)	5.35"(W) x 5.12"(D) x 4.35"(H) (136.0 mm x 130.3 mm x 110.6 mm)	2.60"(W) x 5.28"(D) x 3.81"(H) (66.2 mm x 134.2 mm x 97.0 mm)	
	Operating environment	AC adapter (included), DC 13V (11.5-14.0V) Power consumption: 14W or less		AC adapter (included), DC 13V (11.5-14.0V) Power consumption: 10W or less	
Unit specifications	Power source	AC adapter (included), DC 13V (11.5-14.0V) Power consumption: 14W or less		PoE IEEE802.3 at compliant AC adapter (option), DC 13V (11.5-14.0V) Power consumption: 10W or less	
	Weight	approximately 1.37 lbs(620 g)	approximately 1.5 lbs(700 g)	approximately 1.06 lbs(480 g)	approximately 1.17 lbs(530 g)

NETWORK CAMERA SERVER		VB 150
Product code		8346A002
Protocol		TCP/IP, HTTP, BOOTP, FTP, SMTP
Image compression method		Motion-JPEG (movie, variable image quality from 1 to 99), JPEG (still image)
Capture frame rate		0.1 to 30 fps (variable)
Capture size		160 x 120/320 x 240/640 x 240
Server functions		www, FTP, Camera
Log administration		Syslog format (capable of e-mail, FTP, flash memory recording)
Camera control		Pan, tilt, zoom, preset, brightness, shutter speed, focus, ND filter (only with NU-700N), wiper (only with NU-700N), visible range restriction, administration time limitation (up to 60 minutes), maximum number in queue for control right (0 to 50)
Support camera		VC-C4/VC-C4R, NU-700N, VC-C50i/VC-C50iR
Access limitations		Access control: password (up to 50)/host specification (30 categories), image connection time (1 to 65535 seconds, unlimited)
Simultaneous client access		50 (Max)
Image storage features		Flash memory card, scheduled recording (minimum 1-minute intervals), recording by an external device (minimum 1-minute intervals), recording by motion detection (minimum 1-minute intervals)
Stored image collection		Capable of remote operation via LAN or from remote locations (from a minimum of 5 minutes using the VB Collector)
E-mail features		Transmission of static images from recording by an external device, transmission of log code (data, error, warning)
Interface	Image input	4 inputs (NTSC:RCA x 2, BNC x 2)
	Serial	RS-232C x 2 (MiniDIN8, for camera control x 2)
	Network	Ethernet x 1 (10/100Mbps auto negotiation)
	Expansion slots	PCMCIA Type II (3.3V/5V) x 2 *Please check PC card model operation before use
	Contact input/output	Input x 2, output x 2
Unit specifications	Display LEDs	Power on/off, network status, PCMCIA status display
	Size	9.77"(W) x 6.56"(D) x 2.05"(H) (248.3 mm x 166.8 mm x 52.1 mm)
	Operating environment	Temperature: F: 32-104° (C: 0-40°), humidity: 20 to 85% RH (no condensation)
	Power source	AC adapter (included), DC 13V (11.5-14.0V) Power consumption: 17W or less
Weight		Approximately 2.6 lbs(1.2 kg)

ANALOG CAMERA		VC-C50i	VC-C50iR
Product code		0667B001	0668B001
Image signal		NTSC-compatible	
Image sensor		1/4 CCD	
Pixels		680K pixels (340K effective)	
Synchronizing method		Internal synchronizing	
Horizontal resolution		460TV	
Vertical resolution		350TV	
SN ratio		50dB	
Scanning method		2:1 interlaced	
Minimum subject illumination		1 lux (at 1/30 seconds)	
Capture mode		Normal mode/Night mode	
Drive mechanism	Pan +100° / -100° (1°~90°/sec)	Tilt +90° / -30° (1°~70°/sec)	+170° / -170° (1°~90°/sec) +10° / -90° (1°~70°/sec)
Connection terminal	Output terminal Multi-connector	VIDEO OUT: BNC composite video output	
Cascade control		S-VIDEO output, RS-232C control (input/output), sensor input, alarm output, external illumination control	
Focus		Up to 9 units	
Aperture		Auto/Manual W: 0.39" to ∞ (0.01 m to ∞), T: 62.9" to ∞ (1.6 m to ∞)	
Lens		Auto iris servo method	
Night mode	Infrared-cut filter	f = .13" to 3.38" (3.5mm to 91.0 mm), F 1.6 to 4.0, 26x power zoom (when capturing images at ∞)	
	Light projection distance	Power on/off	
	Minimum subject illumination	9.8ft (3 m)	
Lens filter diameter		0 lux (with Infrared light projection)	
White balance		1.45" (37 mm) pitch = .029" (0.75 mm)	
Installation angle		TTL auto/manual/one-push	
Unit specifications	Size	Horizontal ±20° (±15° when using the optional wide converter)	
	Operating environment	3.93"(W) x 4.92"(D) x 3.77"(H) (100 mm x 125 mm x 96 mm)	
	Power source	5.11"(W) x 4.92"(D) x 3.77"(H) (130 mm x 125 mm x 98 mm)	
	Weight	Temperature: F: 32-104° (C: 0 to 40°); Humidity: 20 to 85% RH (no condensation) AC adapter (included), DC 13V (11.5-14.0V) Power consumption: 13 W or less	
		Approximately 0.93 lbs (420 g)	Approximately 1.08 lbs (490 g)

## NETWORK VIDEO RECORDER

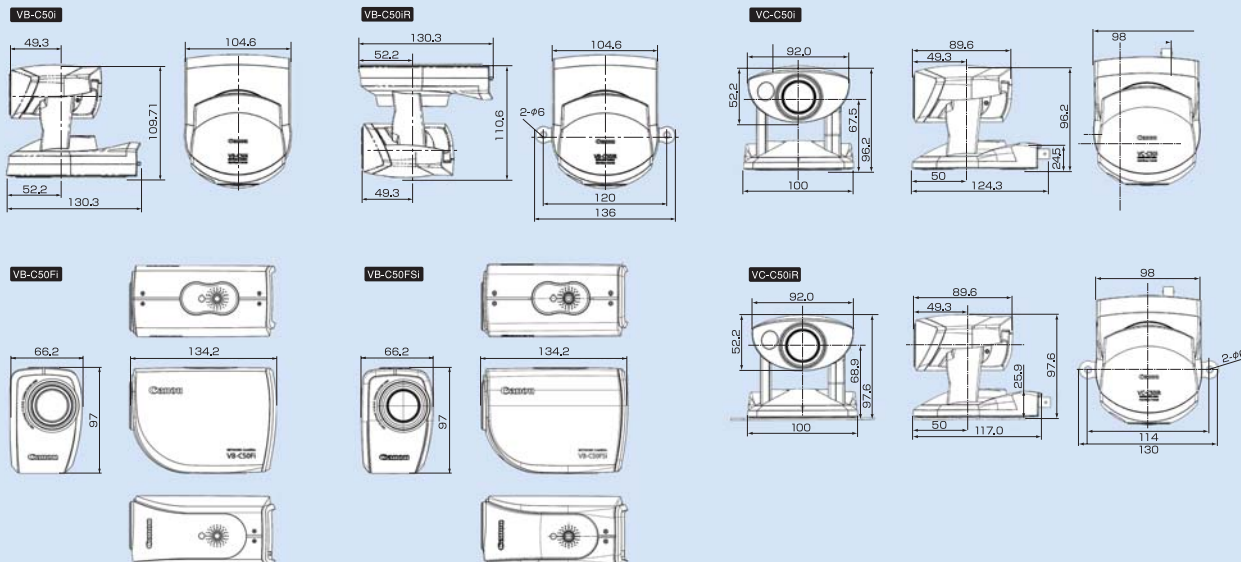
		VK-64 v1.1	VK-16 v1.1	
Product code		9513A011	9513A012	
Compatibility camera servers		VB-C50FSI, VB-C50Fi, VB-C50iR, VB-C10/VB-C10R, VB150, VB101		
Recording features	Recorded file format	Motion-JPEG		
	Images input	64	16	
	Image recording size	160 x 120 to 640 x 480		
	Recording medium	HDD		
	Recording time	Depends on OS specifications and PC'S HDD capacity		
	Recording frame rate	0.1 to 30 fps		
	Recording mode	Schedule	Yes	
Sensor detection recording		Yes		
Motion detection recording		Yes		
Pre-event recording		Yes (maximum 30 seconds)		
	Post-event recording	Yes (maximum 999 seconds)		
Displayed image playback	Image screens	Normal: 24 (XGA), 35 (SXGA); Full-screen mode: 36 (SXGA), 64 (SXGA)		
	Simultaneous playback during recording	Yes		
	Live image monitoring during recording	Yes		
	Rewind and fast forward speed	x2, x5, x10		
	Search function	Date, time, event		
Other	Live/image playback feature characteristics	Motion detection, event detection, control of output to external devices		
	Number of viewers connected simultaneously to the recording server	5		
Operating environment	Number of operating servers		3	
	Recording server (recommended conditions)	CPU	Pentium 4, 2.2 GHz or faster	
		OS	Windows Server 2003 Standard Edition, Windows Server 2003 Standard Edition (SP1), Windows 2000 Server (SP4), Windows 2000 Professional (SP4), Windows XP Professional (SP2) *1	
		Memory	1024 MB or higher (1.5 GB or higher recommended when using 48 or more camera servers)	
	Viewer	Minimum conditions	Hard disk	20 GB or higher available disk space
			Display	XGA (1024 x 768) or better, high resolution display with 16 bit color or higher
			CPU	Pentium III, 700 MHz or faster
	Recommended conditions	OS	Memory	256 MB or higher (1 GB recommended when using 16 or more camera servers)
			Hard disk	2 GB or higher available disk space
			Display	XGA (1024 x 768) or better, high resolution display with 16 bit color or higher
Standard package (recording server+ viewer)	Additional viewer license	CPU	Pentium 4, 2.2 GHz or faster	
		OS	Windows XP Professional (SP1)	
		Memory	1024 MB or higher	
Contents	Additional viewer license	Hard disk	2 GB or higher available disk space	
		Display	XGA (1024 x 768) or better, high resolution display with 16 bit color or higher	
		VK-64	VK-16	
		1 additional client (9513A013) 5 additional clients (9513A014)		

\*When using Windows XP SP2, depending on the OS specifications, if more than 10 of the cameras that are registered with the recording server cannot be connected, startup and various operation of the VK-64 viewer may take time.

## WEBVIEW LIVESCOPE

		MV Ver. 2.1	MV Ver. 2.1 Additional Station License*	MV Ver. 2.1 LE
Product code		6633A022	6633A023	6633A024
Protocol		TCP/IP, HTTP, FTP		
Registered camera servers		Up to 100		
Compatibility camera servers		VB-C50FSI, VB-C50Fi, VB-C50iR, VB-C10/VB-C10R, VB150, VB101/VB100 Version 3 or higher		Up to 4 (however, when multiple cameras are connected to a camera server, the number of servers serving up to a total of 4 cameras) VB-C50Fi, VB-C50iR, VB-C10/VB-C10R, VB150, VB101/VB100 Version 3.0 or higher
Screen pattern		1/2/3/4/5/6/8/9/10/12/16/full screen		
Auto-switch		Switching between up to 10 screens (same screen pattern)		
Automatic preset tour		8 Presets per camera server		
Camera control		Pan, tilt, zoom, backlight correction, preset, panorama operation, focus		
Server contact input/output		Input: alarm display Output: remote control		
Motion detection		Detection: alarm display		
Map feature		Input external image (bmp or JPEG)		
Stored image collection		Set 16 tasks: minimum 1 hour interval		
Search recorded image		Sort-by-image difference feature		
Operating environment	CPU	Pentium III, 600 MHz or faster		
	OS	Windows 2000 (SP4) or XP (SP1)		
	Memory	128 MB or higher		
	Hard disk	50 MB or higher available disk space		20 MB or higher available disk space
	Display	XGA or higher, 16 bit color or higher		XGA or higher, 16 bit color or higher
	Browser	IE 5.0 or later		

Features: (Only for MV Version 2.1) • Auto-switch: switches automatically between multiple screens • Automatic preset tour: drives up to 8 preset settings automatically • Motion detection feature: recognizes images within a specified area and notifies, records, etc. (available only with VB150) • Image collection and administration: collects images stored within the camera server at regular intervals and plays back video • Map feature: places cameras and sensors on desired map data, visually supplementing monitoring \* If you are using the MV Station installed in more than one server, please purchase additional license(s). \*Some features are unavailable when using a VB-C50 series network camera and/or VC-C50i/VC-C50iR communication camera. (Only for MV Version 2.1 LE) • You can control the cameras with up to 4 screen displays • Full-screen display or camera server connection data display \*Some features are unavailable when using a VB-C50 series network camera and/or VC-C50i/VC-C50iR communication camera.



UNIT: mm (millimeter)

## OPTIONS

### WIDE CONVERTER

#### Wide Converter WL-37



Item Code: 4674A001

A wider angle of image capture can be achieved by attaching the optional Wide Converter WL-37 to the VB-C50i/VB-C50iR/VC-C50i. This option is useful when the camera is installed too close to the area that requires monitoring.

- Lens magnification: 0.74x
- Expands field-of-view to 65°

For safety reasons, this optional item cannot be used with ceiling-mounted models.

### EXPANSION BOX

#### Multi Terminal Module VB-EX50



Item Code: 9783A003

The Multi Terminal Module VB-EX50 enables connection of various types of external devices to the VB-C50i/VB-C50iR/VC-C50Fi.

- Audio Out for speakers
- Video In/Out (BNC) for analog video cameras already in use
- External Sensor In/Out for sensors and alarms

### AC ADAPTER

#### AC Adapter PA-16 and AC Cable

Item Code: 6588A001

AC Adapter for VB-C50F5i

- Input: voltage AC 100V-240V 50/60Hz
- Output: voltage 13V(11.5-14V), 1.8A(Max.)
- Dimension (W x D x H): 2.28 x 4.65 x 0.95in.(58 x 118 x 25mm)
- Weight: 0.45lbs (205g)

### DOMES/HOUSINGS for VB-C50i/VB-C50iR

#### IRC1-P: Indoor Recessed Clear Dome



Item Code: 9958A001

- Plenum rated metal top indoor recessed ceiling housing
- 7" optically clear lower dome
- White decorative trim ring with quick-release pressure springs
- 24vac input for longer cable runs
- Power convert inside the housing to provide 12vdc to the camera
- Right angle power plug
- Feed through wiring for power and Ethernet
- 40va plug-in 110vac to 24vac wall transformer included

#### IWC1-P: Indoor Wall Clear Dome



Item Code: 9958A002

- Indoor dome housing that is UV protected, and a 94VO flame rating
- Wall mount to allow the housing to attach to most vertical surfaces
- 24vac input for longer cable runs
- Power convert inside the housing to provide 12vdc to the camera
- Right angle power plug
- Feed through wiring for power and Ethernet
- 40va plug-in 110vac to 24vac wall transformer included

#### IPC1-P: Indoor Pendant Clear Dome



Item Code: 9958A003

- Indoor dome housing that is UV protected and a 94VO flame rating
- Pendant mount, 1 1/2" pipe thread
- 24vac input for longer cable runs
- Power convert inside the housing to provide 12vdc to the camera
- Right angle power plug
- Feed through wiring for power and Ethernet
- 40va plug-in 110vac to 24vac wall transformer included

#### OWC1-P: Outdoor Wall Clear Dome



Item Code: 9958A004

- Outdoor dome housing that is UV protected, and a 94VO flame rating
- Wall mount to allow the housing to attach to most vertical surfaces
- Heater and Blower to maintain an operating environment of (-20°F to +120°F)
- 24vac input for longer cable runs
- Power convert inside the housing to provide 12vdc to the camera
- Right angle power plug
- Feed through wiring for power and Ethernet
- 40va plug-in 110vac to 24vac wall transformers included

#### OPC1-P: Outdoor Pendant Clear Dome



Item Code: 9958A005

- Outdoor dome housing that is UV protected and a 94VO flame rating
- Pendant mount, 1 1/2" pipe thread
- Heater and Blower to maintain an operating environment of (-20°F to +120°F)
- 24vac input for longer cable runs
- Power convert inside the housing to provide 12vdc to the camera
- Right angle power plug
- Feed through wiring for power and Ethernet
- 40va plug-in 110vac to 24vac wall transformers included

#### OPCP1-P: Outdoor Pendant Clear Pressurized Dome



Item Code: 9958A006

- Outdoor pressurized dome housing that is UV protected and a 945VA flame rating
- Schrader Valve for nitrogen input
- 5-7psi pressure relief valve to protect against pressurization
- Pendant mount, 1 1/2" pipe thread
- Heater and Blower to maintain an operating environment of (-40°F to +120°F)
- 24vac input for longer cable runs
- Power convert inside the housing to provide 12vdc to the camera
- 100va plug-in 110vac to 24vac transformer included

#### IPC2: Indoor Pendant Clear Dome



Item Code: 0693V579

- Wall mounting bracket for pendant domes
- Decorative gooseneck style bracket
- 1 1/2" pipe thread on end for quick and easy dome mounting
- Durable powder coat finish
- All aluminum construction
- 50 lb load rating

#### WMB1: Wall Mount Bracket



Item Code: 0612V934

- Wall mounting bracket for pendant domes
- Decorative gooseneck style bracket
- 1 1/2" pipe thread on end for quick and easy dome mounting
- Durable powder coat finish
- All aluminum construction
- 50 lb load rating

#### CMB1: Ceiling Mount Bracket



Item Code: 0648V239

- Ceiling mounting bracket for pendant domes
- Includes junction box
- Includes 1 1/2" pipe threaded coupling
- Wiring can be run through the ceiling through conduit into the junction box
- Durable powder coat finish
- All steel construction
- 30 lb load rating

### HOUSINGS for VB-C50Fi

#### IWH1-P: Indoor Wall/Pole Housing



Item Code: 0630V051

- Indoor housing that is UV protected
- Wall mount/Pole mount to allow the housing to attach to most vertical surfaces
- Side hinges for ease of access when focusing and adjusting the camera
- 24vac input for longer cable runs
- Feed through wiring for power and Ethernet
- Specifically designed for the VB-C50Fi Fixed Network Camera

#### OWH1-P: Outdoor Wall/Pole Housing



Item Code: 0630V050

- Indoor housing that is UV protected
- Wall mount/Pole mount to allow the housing to attach to most vertical surfaces
- Side hinges for ease of access when focusing and adjusting the camera
- 24vac input for longer cable runs
- Feed through wiring for power and Ethernet
- Specifically designed for the VB-C50Fi Fixed Network Camera

#### IWH2: Indoor Wall/Pole Housing



Item Code: 0689V554

- Indoor housing that is UV protected
- Wall mount/Pole mount to allow the housing to attach to most vertical surfaces
- Side hinges for ease of access when focusing and adjusting the camera
- 24vac input for longer cable runs
- Feed through wiring for power and Ethernet
- Specifically designed for the VB-C50Fi Fixed Network Camera

**Canon**  
image*ANYWARE*

1-800-OK-CANON  
www.usa.canon.com

Canon U.S.A., Inc.  
One Canon Plaza  
Lake Success, NY 11042 U.S.A.

Canon Canada, Inc.  
6390 Dixie Road  
Mississauga, Ontario L5T 1P7 Canada

Canon Mexicana, S. de R.L. de C.V.  
Blvd. Manuel Ávila Camacho  
No. 138, Piso 17  
Col. Lomas de Chapultepec  
C.P. 11000 México, D.F. México

Canon Latin America, Inc.  
703 Waterford Way, Suite 400  
Miami, FL 33126 U.S.A.

Specifications are subject to change without notice. Weight and dimensions are approximate. Canon and Canon Know How are registered trademarks of Canon Inc. in the United States and may also be registered marks in other countries. Microsoft and Windows are either registered trademarks or trademarks of the Microsoft Corporation in the United States and/or other countries. Macintosh and Mac OS are trademarks of Apple Computer, Inc., registered in the United States and other countries. Other names and products not mentioned above may be registered trademarks or trademarks of their respective companies.

Warning: Unauthorized recording of copyrighted materials may infringe on the rights of copyright owners and be contrary to copyright laws.

[www.canondv.com/nvs](http://www.canondv.com/nvs)