

| | |
|----------|---|
| DATE | |
| REVISION | |
| NO. | DESCRIPTION |
| 1 | 10/27/17 REVISED FOR REGIONAL STORMWATER PLAN |
| 2 | 11/27/18 REVISED FOR ILLINOIS REVIEW |

Manhard CONSULTING LTD.
 700 Springer Drive, Lombard, IL 60148 | PH: 630.931.8500 | FAX: 630.931.8985 | manhard.com
 Civil Engineers • Surveyors • Water Resource Engineers • Water & Wastewater Engineers
 Construction Managers • Environmental Scientists • Landscaping Architects • Planners

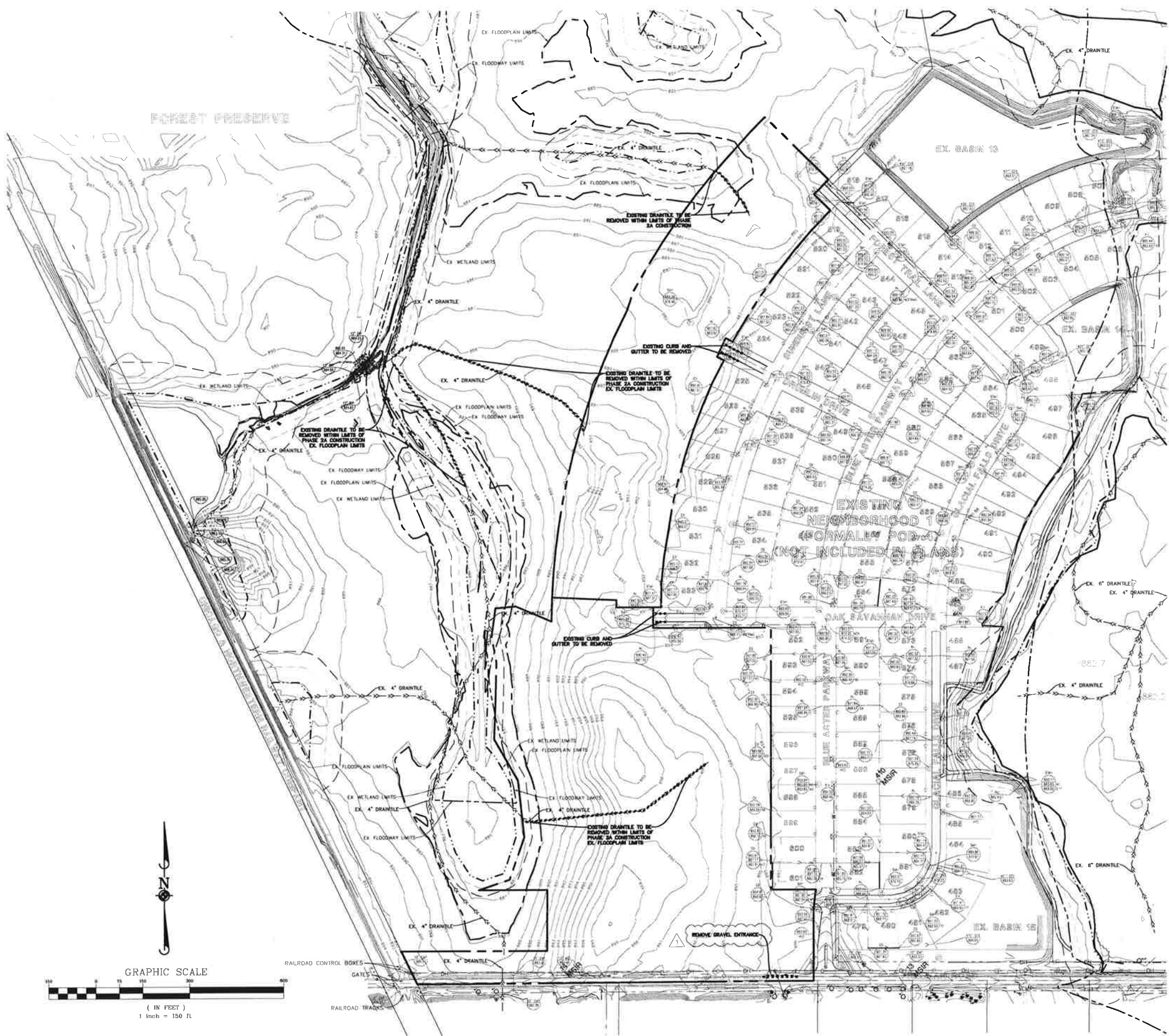
THE CONSERVANCY - NEIGHBORHOOD 2A
 VILLAGE OF GILBERTS, ILLINOIS
 INDEX OF SHEETS

| | |
|--------------|----------|
| PROGRAM | JFD |
| PROJ. ASSOC. | PHI |
| DRAWN BY | NCL |
| DATE | 07/22/16 |
| SCALE | 1"=150' |

SHEET
2 OF **23**
 GOL.GIL.01

PENDING APPROVAL - NOT FOR CONSTRUCTION

14



- EXISTING CONDITIONS NOTES:**
1. EXISTING CONDITIONS AND DEMOLITION PLAN REPRESENT SITE CONDITIONS AS OF MARCH 17, 2016. CONTRACTOR SHALL INSPECT SITE PRIOR TO BIDDING WORK TO VERIFY ACTUAL FIELD CONDITIONS AS PORTIONS OF THE DEMOLITION WORK MAY HAVE SINCE BEEN COMPLETED. CONTRACTOR SHALL BE RESPONSIBLE TO COMPLETE ALL DEMOLITION WORK AS PER PLANS TO PREPARE THE SITE FOR CONSTRUCTION OF PROPOSED IMPROVEMENTS.
 2. THE UNDERGROUND UTILITY INFORMATION AS SHOWN HEREON IS BASED, IN PART, UPON INFORMATION FURNISHED BY UTILITY COMPANIES AND THE LOCAL MUNICIPALITY. WHILE THIS INFORMATION IS BELIEVED TO BE RELIABLE, ITS ACCURACY AND COMPLETENESS CANNOT BE GUARANTEED NOR CERTIFIED TO.
 3. THE CONTRACTOR IS RESPONSIBLE FOR DEMOLITION, REMOVAL AND LAWFUL DISPOSAL (IN A LOCATION APPROVED BY ALL GOVERNING AUTHORITIES) OF ALL STRUCTURES, PADS, WALLS, FLUMES, FOUNDATIONS, PARKING, DRIVES, DRAINAGE STRUCTURES, UTILITIES, ETC., SUCH THAT THE IMPROVEMENTS SHOWN ON THESE PLANS CAN BE CONSTRUCTED. ALL DEMOLITION WORK SHALL BE IN ACCORDANCE WITH ALL APPLICABLE FEDERAL, STATE AND LOCAL REQUIREMENTS. ALL FACILITIES TO BE REMOVED SHALL BE UNDERCUT TO SUITABLE MATERIAL AND BROUGHT TO GRADE WITH SUITABLE COMPACTED FILL MATERIAL PER THE SPECIFICATIONS.
 4. EXISTING DRAIN TILE LOCATIONS SHOWN AREA APPROXIMATE PER THE "LOCATION AND DRAIN TILES" EXHIBIT PREPARED BY PHOENIX & ASSOCIATES DATED FEBRUARY 22, 2016.
 5. REFER TO SHEET 23 FOR DEMOLITION NOTES AND SPECIFICATIONS.

DEMOLITION LEGEND

| | |
|-------|--|
| | PAVEMENT AND BASE TO BE REMOVED |
| | BUILDING TO BE REMOVED |
| | SAWCUT LINE |
| | FENCE, RETAINING WALL, RAILROAD TIES, POLES, CURB AND GUTTER, ETC. TO BE REMOVED |
| | UTILITY STRUCTURE TO BE REMOVED |
| | UTILITY LINE REMOVAL, FILL OR ABANDONMENT (REFER TO SPECIFICATIONS) |
| | TREE TO BE REMOVED |
| (TBR) | TO BE REMOVED |

| | | | |
|-------|----------|----------|----------------------------|
| DATE | 10/27/16 | REVISION | REVISED PER VILLAGE REVIEW |
| BY | JGH | CHECKED | |
| APP'D | | DATE | |

Manhard CONSULTING

200 S. Main Street, Lombard, IL 60148
 708.930.8100
 708.930.8101
 708.930.8102
 708.930.8103
 708.930.8104
 708.930.8105
 708.930.8106
 708.930.8107
 708.930.8108
 708.930.8109
 708.930.8110
 708.930.8111
 708.930.8112
 708.930.8113
 708.930.8114
 708.930.8115
 708.930.8116
 708.930.8117
 708.930.8118
 708.930.8119
 708.930.8120

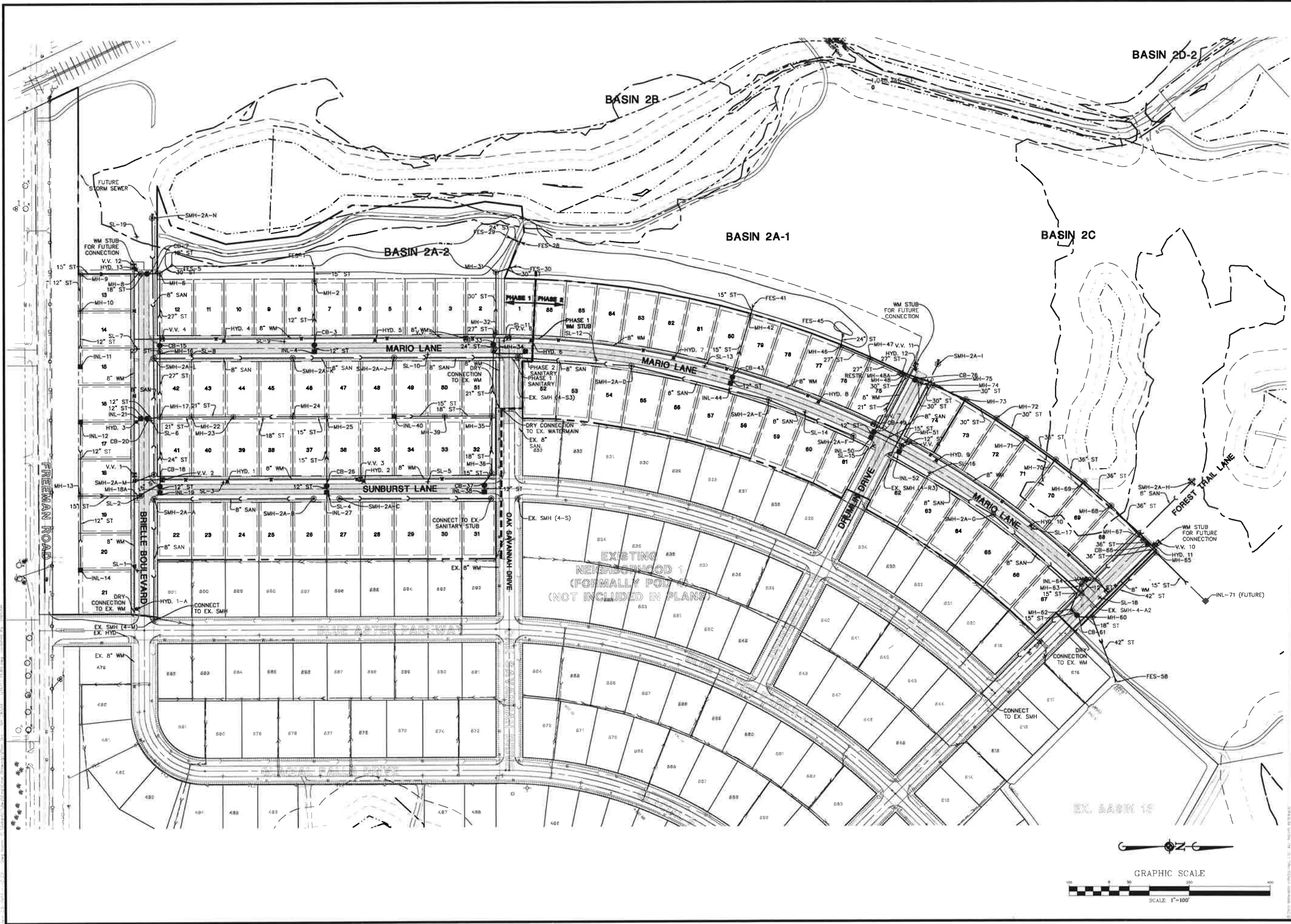
Professional Engineers • Surveyors • Water & Wastewater Engineers
 Civil Engineers • Structural Engineers • Environmental Scientists • Landscape Architects • Planners
 Construction Managers • Environmental Scientists • Landscape Architects • Planners

THE CONSERVANCY - NEIGHBORHOOD 2A
 VILLAGE OF GILBERTS, ILLINOIS
 EXISTING CONDITIONS & DEMOLITION PLAN

PROJ. NO.: JCD
 PROJ. AREA: JGH
 DRAWN BY: JGH
 DATE: 07/22/16
 SCALE: 1"=150'

SHEET
3 OF **23**
 GDL.GIL.01

PENDING APPROVAL - NOT FOR CONSTRUCTION



| DATE | REVISIONS |
|----------|--------------------------------------|
| 06/07/17 | REVISED PER REGIONAL STORMWATER PLAN |
| 03/17/17 | REVISED PER VILLAGE REVIEW |
| 02/28/17 | REVISED PER VILLAGE REVIEW |
| 10/27/16 | REVISED PER VILLAGE REVIEW |

Manhard CONSULTING LTD.
 700 Bringer Drive, Lombard, IL 60148 • PH: 630.891.8200 • FAX: 630.891.8988 • manhard.com
 Civil Engineers • Surveyors • Water Resource Engineers • Water & Wastewater Engineers
 Construction Managers • Environmental Scientists • Landscape Architects • Planners

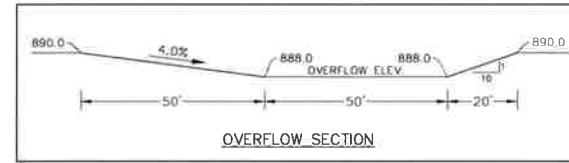
THE CONSERVANCY - NEIGHBORHOOD 2A
 VILLAGE OF GILBERTS, ILLINOIS
 OVERALL UTILITY PLAN

PROJ. NO.: JPD
 PROJ. ABBR.: JPH
 DRAWN BY: BPH
 DATE: 07/22/16
 SCALE: 1"=100'
 SHEET
4 OF **23**
 GDL.GIL.01

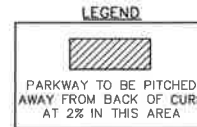
PENDING APPROVAL - NOT FOR CONSTRUCTION



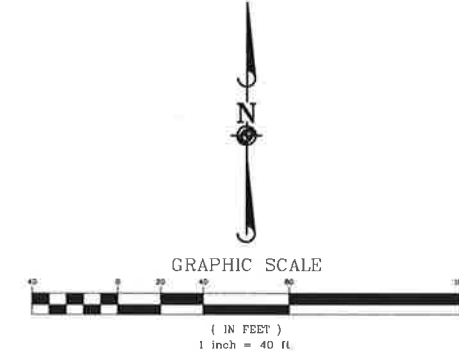
KEY MAP



OVERFLOW SECTION

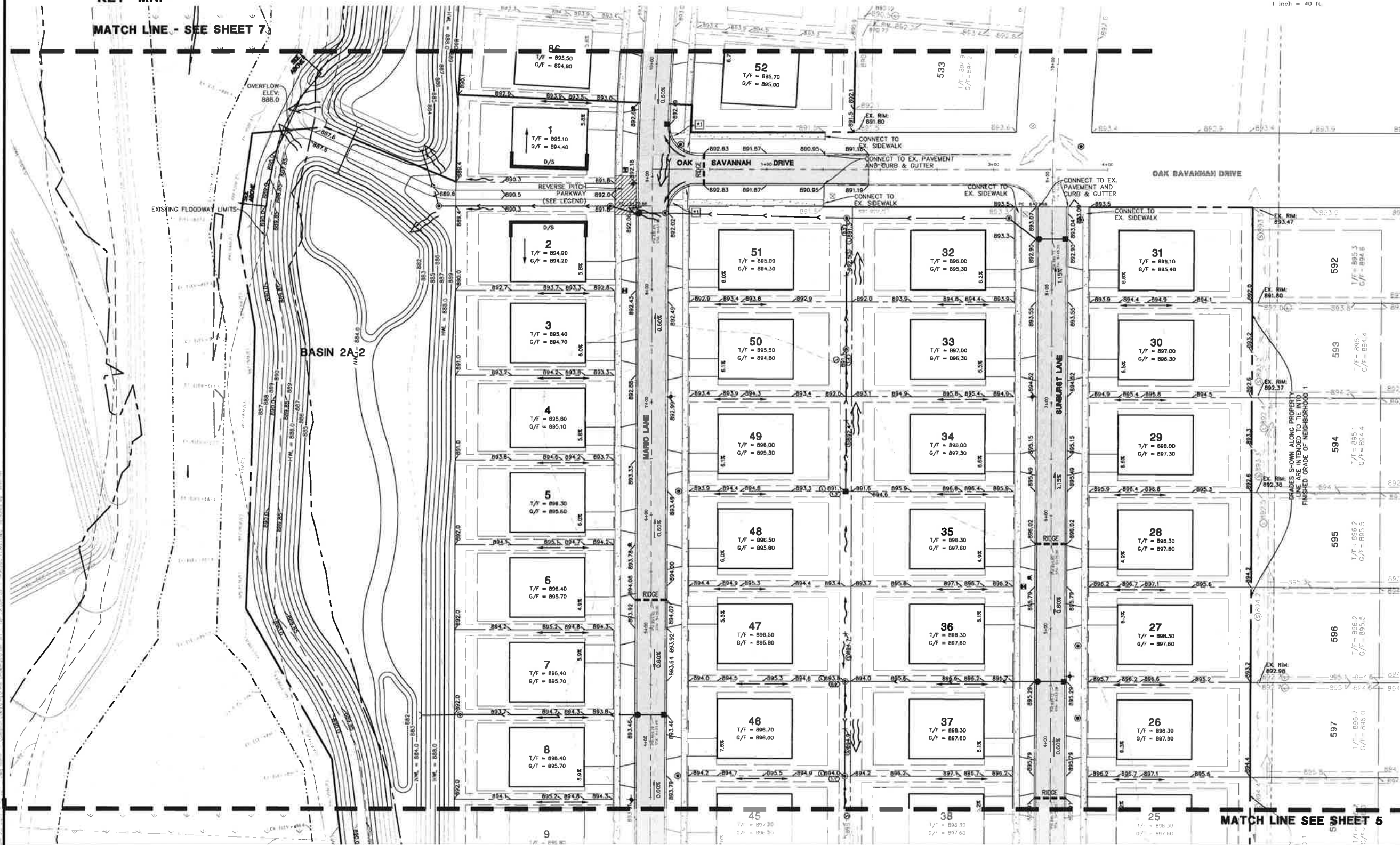


SEE SHEET 5 FOR TYPICAL GRADING NOTES AND DETAILS



GRAPHIC SCALE

(IN FEET)
1 inch = 40 ft.



MATCH LINE - SEE SHEET 7

MATCH LINE SEE SHEET 5

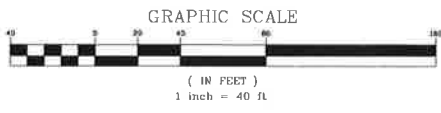
THE CONSERVANCY - NEIGHBORHOOD 2A
VILLAGE OF GILBERTS, ILLINOIS
GRADING PLAN B



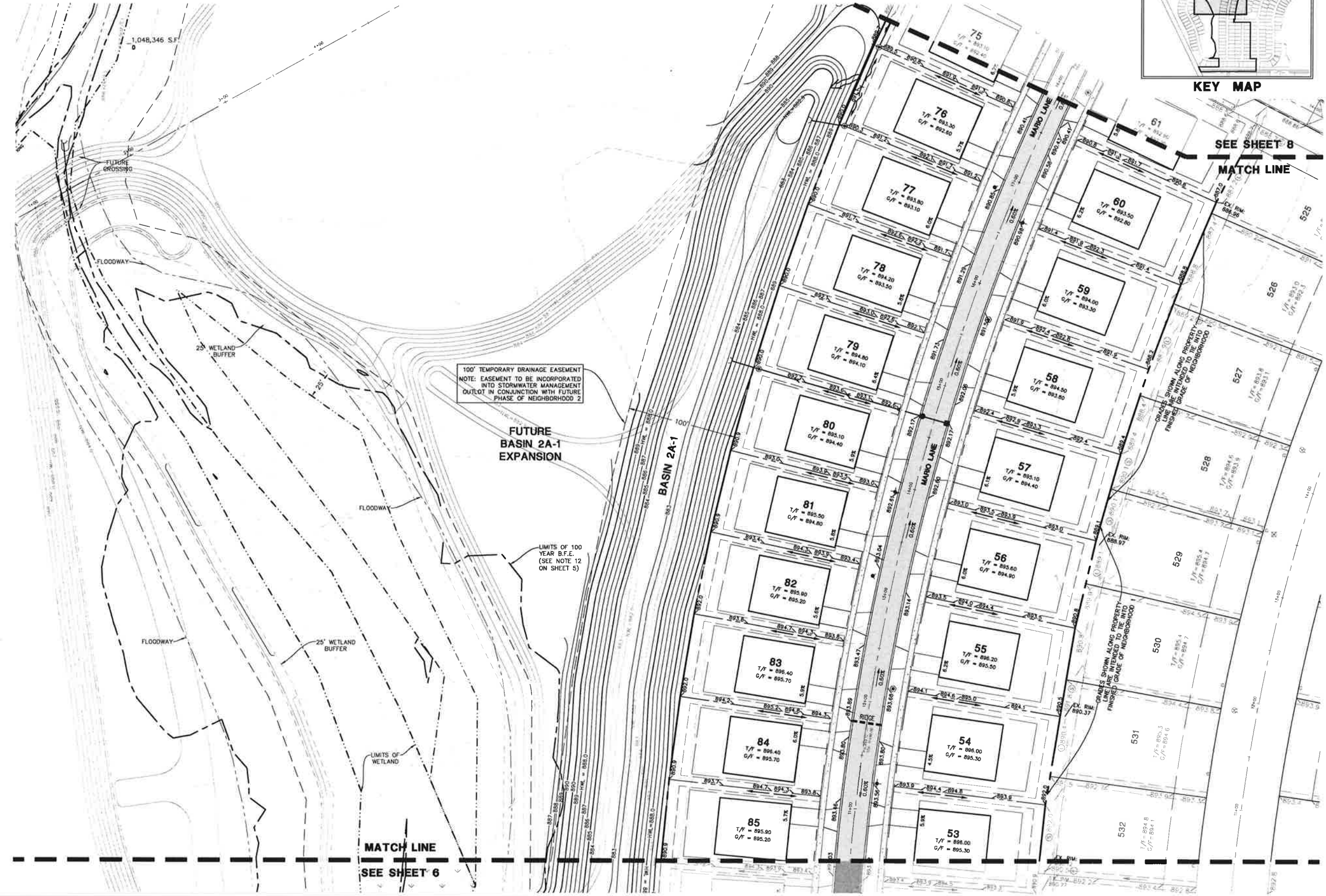
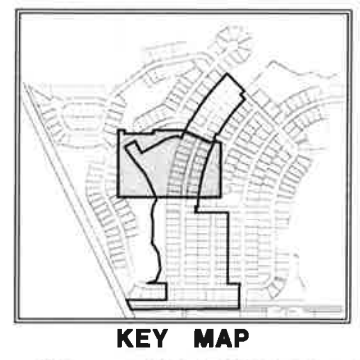
| | |
|-----------|---|
| DATE | 07/22/18 |
| REVISIONS | |
| NO. | DESCRIPTION |
| 1 | 06/07/17 REVISED PER REGIONAL STORMWATER PLAN |
| 2 | 10/07/16 REVISED PER VILLAGE REVIEW |

PROJ. MGR.: JPD
PROJ. ASSOC.: JRH
DRAWN BY: JRH
DATE: 07/22/18
SCALE: 1"=40'
SHEET
6 OF **23**
GDL_GIL_01

PENDING APPROVAL - NOT FOR CONSTRUCTION



SEE SHEET 5 FOR TYPICAL GRADING NOTES AND DETAILS



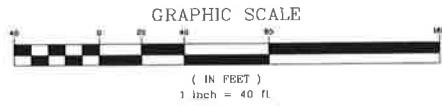
| | |
|-----------|--------------------------------------|
| DATE | 07/22/16 |
| REVISIONS | |
| 06/07/17 | REVISED PER REGIONAL STORMWATER PLAN |
| 10/07/16 | REVISED PER VILLAGE REVIEW |

Manhard CONSULTING
200 Schiller Drive, Lombard, IL 60148, Ph: 630.831.8000, Fax: 630.831.8585, manhard.com
Civil Engineers • Surveyors • Water Resources Engineers • Water & Wastewater Engineers
Construction Managers • Environmental Scientists • Landscape Architects • Planners

THE CONSERVANCY - NEIGHBORHOOD 2A
VILLAGE OF GILBERTS, ILLINOIS
GRADING PLAN C

PROJ. MGR.: JPD
PROJ. ASSOC.: JRH
DRAWN BY: JRH
DATE: 07/22/16
SCALE: 1"=40'
SHEET
7 OF 23
GDL_GIL_01

PENDING APPROVAL - NOT FOR CONSTRUCTION



SEE SHEET 5 FOR TYPICAL GRADING NOTES AND DETAILS



KEY MAP



| DATE | REVISION |
|----------|--------------------------------------|
| 07/22/16 | REVISED PER REGIONAL STORMWATER PLAN |
| 10/27/16 | REVISED PER VILLAGE REVIEW |

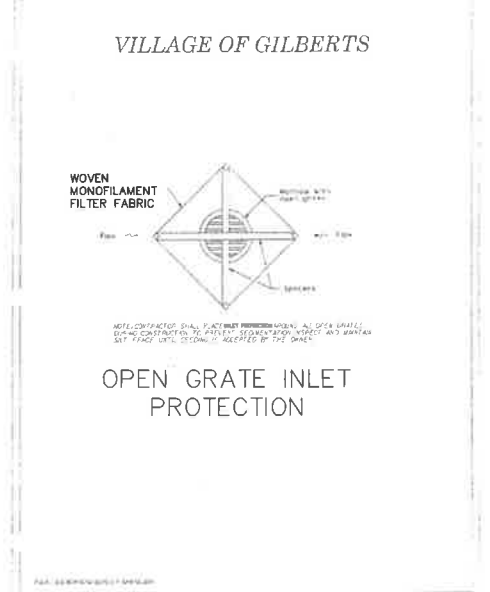
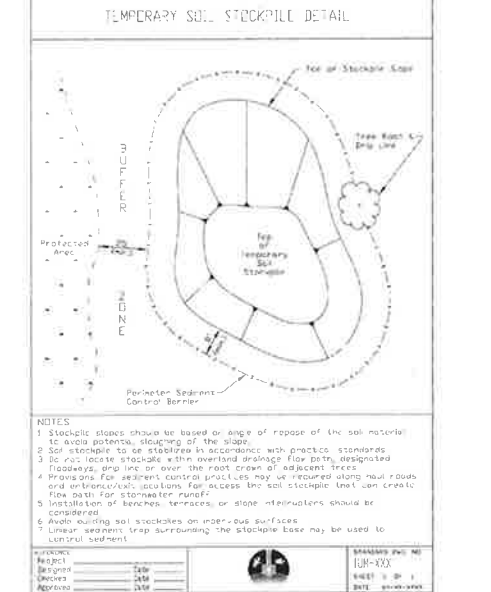
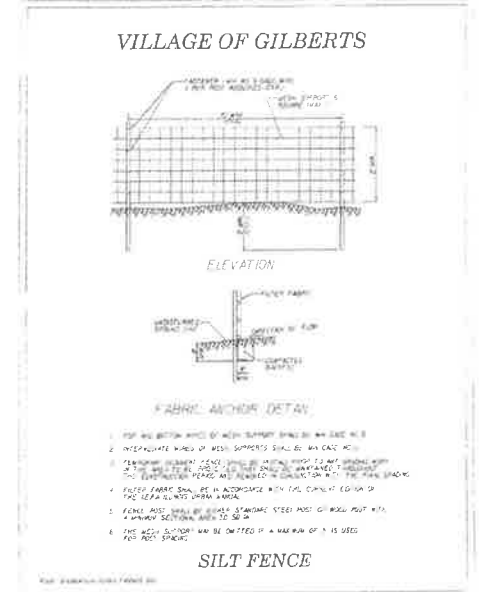
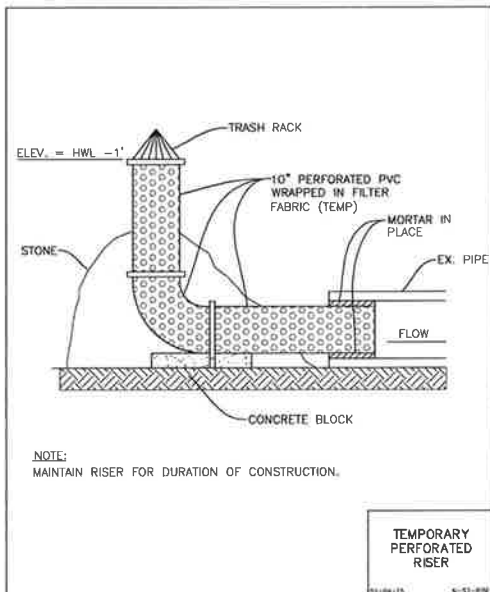
Manhard CONSULTING LTD.

700 Springier Drive, Lombard, IL 60148 • 630.931.8500 • 630.931.8595 • manhard.com
 Civil Engineers • Surveyors • Water-Resource Engineers • Water & Wastewater Engineers
 Construction Managers • Environmental Scientists • Landscape Architects • Planners

THE CONSERVANCY - NEIGHBORHOOD 2A
 VILLAGE OF GILBERTS, ILLINOIS
 GRADING PLAN D

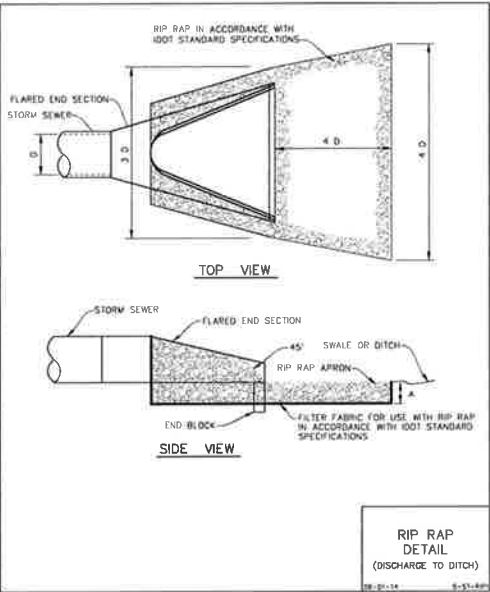
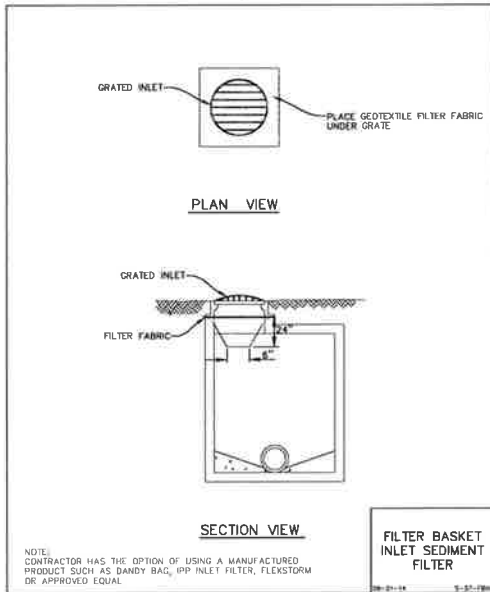
| | |
|------------|----------|
| PROJECT | JRD |
| PROJECT | JRH |
| DRAWN BY | JRH |
| DATE | 07/22/16 |
| SCALE | 1"=40' |
| SHEET | 8 OF 23 |
| GDL.GIL.01 | |

PENDING APPROVAL - NOT FOR CONSTRUCTION



- CONSTRUCTION SEQUENCE:**
1. INSTALL SILT FENCE AT LOCATIONS AS INDICATED ON THE PLANS.
 2. PROVIDE STABILIZED CONSTRUCTION ENTRANCE.
 3. CONSTRUCT TEMPORARY SEDIMENT TRAPS AND/OR BASINS.
 4. STRIP EXISTING TOPSOIL FROM PROPOSED STORMWATER MANAGEMENT AREAS AND STOCKPILE WHERE SHOWN ON PLANS.
 5. PROVIDE SILT FENCE AROUND THE BASE OF THE STOCKPILES.
 6. CONSTRUCT STORMWATER MANAGEMENT (DETENTION) FACILITIES TO SUB-GRADE AND INSTALL OUTLET PIPES.
 7. COMPLETE TOPSOIL PLACEMENT AND PERMANENT SEEDING AND SODDING OF STORMWATER MANAGEMENT FACILITIES.
 8. CUT AND FILL SITE TO PLAN SUB-GRADE.
 9. CONSTRUCT UNDERGROUND IMPROVEMENTS, I.E. SANITARY SEWER WATERMAIN AND STORM SEWER**, ETC.
 10. CONSTRUCT PAVEMENT IMPROVEMENTS PER PLAN.
 11. COMPLETE CONSTRUCTION OF SITE WITH PERMANENT STABILIZATION.
 12. REMOVE TEMPORARY EROSION AND SEDIMENT CONTROL MEASURES.
- ** INSTALL INLET PROTECTION AROUND DRAINAGE STRUCTURES AS CONSTRUCTED.

- SOIL EROSION AND SEDIMENTATION CONTROL GENERAL NOTES:**
1. ALL VEGETATIVE AND STRUCTURAL EROSION CONTROL PRACTICES SHALL BE CONSTRUCTED AND MAINTAINED IN ACCORDANCE WITH THE MINIMUM STANDARDS AND SPECIFICATIONS OF THE "ILLINOIS URBAN MANUAL".
 2. MAINTENANCE AND REPLACEMENT OF EROSION CONTROL ITEMS, WHEN DIRECTED BY THE OWNER, SHALL BE CONSIDERED AS INCIDENTAL TO THE CONTRACT.
 3. THE CONTRACTOR SHALL INSPECT ALL EROSION CONTROL MEASURES AT LEAST ONCE EVERY SEVEN (7) CALENDAR DAYS AND WITHIN 24 HOURS OF THE END OF A STORM THAT IS 0.5 INCHES OR GREATER OR EQUIVALENT SNOWFALL. ANY NECESSARY REPAIRS OR CLEANUP TO MAINTAIN THE EFFECTIVENESS OF SAID MEASURES SHALL BE MADE IMMEDIATELY.
 4. INSTALL ALL PERIMETER SILT FENCING PRIOR TO ANY CLEARING OR GRADING. ON-SITE SEDIMENT CONTROL MEASURES AS SHOWN AND SPECIFIED BY THIS EROSION AND SEDIMENTATION CONTROL PLAN SHALL BE CONSTRUCTED AND FUNCTIONAL PRIOR TO INITIATING CLEARING, GRADING, STRIPPING, EXCAVATION OR FILLING ACTIVITIES ON THE SITE.
 5. STORMWATERS FALLING ON THE ENTIRE SITE SHALL BE DIVERTED INTO THE DETENTION BASIN. PRIOR TO BEGINNING MASS EXCAVATION, THE CONTRACTOR SHALL CONSTRUCT DITCHES, SWALES, SEDIMENTATION TRAPS AND SILTATION CONTROL MEASURES AS REQUIRED TO INTERCEPT SURFACE WATERS BEFORE THEY FLOW ONTO ADJACENT PROPERTY AND CONVEY THEM TO THE DETENTION BASIN.
 6. DISTURBED AREA SHALL BE STABILIZED BY SEEDING AT A MINIMUM, WITHIN ONE (1) WORKING DAY OF COMPLETION OF DISTURBANCE UNLESS THE AREA WILL BE DISTURBED WITHIN FOURTEEN (14) DAYS AND GRASS SOWN AS NECESSARY TO RE-ESTABLISH VEGETATION FOR CONTROL OF SILTATION AND SOIL EROSION.
 7. TEMPORARY SEED MIXTURE SHALL BE APPLIED AT 90 LBS./ACRE.
 8. INLET PROTECTION SHALL BE INSTALLED UNDER THE GRATING OF EACH DRAINAGE STRUCTURE.
 9. TOPSOIL STOCKPILES SHALL BE SEEDING WITHIN SEVEN (7) CALENDAR DAYS OF COMPLETION FOR EROSION CONTROL UNLESS THEY WILL BE DISTURBED WITHIN FOURTEEN (14) CALENDAR DAYS. ALL SOIL STORAGE PILES SHALL BE PROTECTED FROM EROSION WITH SILT FENCE ON THE DOWN SLOPE SIDE OF THE PILES.
 10. DURING DEWATERING OPERATIONS, WATER WILL BE PUMPED INTO SEDIMENT BASINS OR SILT TRAPS. DEWATERING DIRECTLY INTO FIELD TILES OR STORMWATER STRUCTURES IS PROHIBITED.
 11. WATER PUMPED DURING CONSTRUCTION OPERATION SHALL BE FILTERED.
 12. DUST CONTROL SHALL BE PERFORMED ON A DAILY BASIS USING WATER DISPERSED FROM A TRUCK MOUNTED TANK WITH STANDARD DISCHARGE HEADER TO PROVIDE A UNIFORM RATE OF APPLICATION.
 13. TEMPORARY GRAVEL CONSTRUCTION ENTRANCES SHALL BE MAINTAINED, ADJUSTED OR RELOCATED AS NECESSARY TO PREVENT SEDIMENT FROM BEING TRACKED ONTO PUBLIC ROADWAYS. ANY SEDIMENT REACHING A PUBLIC ROAD SHALL BE REMOVED BY SHOVELING OR STREET CLEANING BEFORE THE END OF EACH WORKING DAY.
 14. ANY LOOSE MATERIAL THAT IS DEPOSITED IN THE FLOW LINE OF ANY GUTTER OR DRAINAGE STRUCTURE DURING CONSTRUCTION OPERATIONS SHALL BE REMOVED AT THE CLOSE OF EACH WORKING DAY.
 15. OVERLAND FLOW SHALL BE DIRECTED TO THE DETENTION BASIN PRIOR TO LEAVING THE SITE.
 16. THE EROSION CONTROL MEASURES INDICATED ON THE PLANS ARE THE MINIMUM REQUIREMENTS. ADDITIONAL MEASURES MAY BE REQUIRED, AS DIRECTED BY THE CLIENT OR OTHER JURISDICTIONAL GOVERNMENTAL ENTITIES.
 17. ALL EROSION AND SEDIMENTATION CONTROL MEASURES SHALL BE REMOVED AND DISPOSED OF IN ACCORDANCE WITH ALL JURISDICTIONAL GOVERNMENTAL AGENCY REQUIREMENTS WITHIN 30 DAYS OF FINAL STABILIZATION.
 18. CONTRACTOR SHALL REMOVE AND REPLACE SILT FENCE AROUND PROPOSED IMPROVEMENTS AS NECESSARY TO MAINTAIN CONSTANT PROTECTION FOR THE WETLAND.
 19. ONCE THE CONTRIBUTING AREA TO THE PROPOSED DETENTION BASIN HAS BEEN STABILIZED, THE BASIN MUST BE CLEANED OUT TO ALLOW FOR UTILIZATION OF SEDIMENT STORAGE.



RIP-RAP

| PIPE DIAMETER (IN.) | QUALITY DESIGNATION | BRAND | MINIMUM THICKNESS (IN.) | MINIMUM LENGTH (FT.) | MINIMUM WEIGHT (LBS.) | WEIGHT AVERAGE (LBS.) | SIZE AVERAGE (IN.) | MINIMUM THICKNESS (IN.) |
|---------------------|---------------------|-------|-------------------------|----------------------|-----------------------|-----------------------|--------------------|-------------------------|
| 12" | B | 3 | 6" | 4' | 1-50 | 10 | 4.5" | N/A |
| 15" | B | 3 | 6" | 5' | 1-50 | 10 | 4.5" | N/A |
| 18" | B | 4 | 16" | 6' | 1-150 | 40 | 7" | 6" |
| 21" | B | 4 | 16" | 7' | 1-150 | 40 | 7" | 6" |
| 24" | B | 4 | 16" | 8' | 1-150 | 40 | 7" | 6" |
| 27" | B | 4 | 16" | 9' | 1-150 | 40 | 7" | 6" |
| 30" | B | 4 | 16" | 10' | 1-150 | 40 | 7" | 6" |
| 36" | B | 5 | 22" | 12' | 3-400 | 90 | 10" | 8" |
| 42" | B | 5 | 22" | 14' | 3-400 | 90 | 10" | 8" |
| 48" | B | 6 | 26" | 16' | 6-600 | 170 | 12" | 10" |
| 54" | B | 6 | 26" | 18' | 6-600 | 170 | 12" | 10" |
| 60" | B | 6 | 26" | 20' | 6-600 | 170 | 12" | 10" |
| 72" | B | 6 | 26" | 24' | 6-600 | 170 | 12" | 10" |

NOTE: 1. FOR PIPE LARGER THAN 72" A SPECIAL DESIGN OF RIP-RAP OR APRON IS REQUIRED.
2. REFER TO I.D.O.T. SPECIFICATIONS AND STANDARDS FOR BEDDING GRADATION.

- KANE-DUPAGE SOIL & WATER CONSERVATION DISTRICT STANDARD NOTES:**
1. UNLESS OTHERWISE INDICATED, ALL VEGETATIVE AND STRUCTURAL EROSION AND SEDIMENT CONTROL PRACTICES WILL BE CONSTRUCTED ACCORDING TO MINIMUM STANDARDS AND SPECIFICATIONS IN THE ILLINOIS URBAN MANUAL LATEST EDITION.
 2. THE KANE-DUPAGE SOIL AND WATER CONSERVATION DISTRICT (KDSWCD) MUST BE NOTIFIED ONE WEEK PRIOR TO THE PRE-CONSTRUCTION CONFERENCE, ONE WEEK PRIOR TO THE COMMENCEMENT OF LAND DISTURBING ACTIVITIES, AND ONE WEEK PRIOR TO THE FINAL INSPECTION.
 3. A COPY OF THE APPROVED EROSION AND SEDIMENT CONTROL PLAN SHALL BE MAINTAINED ON THE SITE AT ALL TIMES.
 4. PRIOR TO COMMENCING LAND-DISTURBING ACTIVITIES IN AREAS OTHER THAN INDICATED ON THESE PLANS (INCLUDING BUT NOT LIMITED TO, ADDITIONAL PHASES OF DEVELOPMENT AND OFF-SITE BORROW OR WASTE AREAS) A SUPPLEMENTARY EROSION CONTROL PLAN SHALL BE SUBMITTED TO THE OWNER FOR REVIEW BY THE KDSWCD.
 5. THE CONTRACTOR IS RESPONSIBLE FOR INSTALLATION OF ANY ADDITIONAL EROSION CONTROL MEASURES NECESSARY TO PREVENT EROSION AND SEDIMENTATION AS DETERMINED BY THE KDSWCD.
 6. DURING DEWATERING OPERATIONS, WATER WILL BE PUMPED INTO SEDIMENT BASINS OR SILT TRAPS. DEWATERING DIRECTLY INTO FIELD TILES OR STORMWATER STRUCTURES IS PROHIBITED.
 7. IT IS THE RESPONSIBILITY OF THE LANDOWNER AND/OR GENERAL CONTRACTOR TO INFORM ANY SUB-CONTRACTOR(S) WHO MAY PERFORM WORK ON THIS PROJECT, OF THE REQUIREMENTS IN IMPLEMENTING AND MAINTAINING THESE EROSION CONTROL PLANS AND THE NATIONAL POLLUTANT DISCHARGE ELIMINATION SYSTEM (NPDES) PERMIT REQUIREMENTS SET FORTH BY THE ILLINOIS EPA.

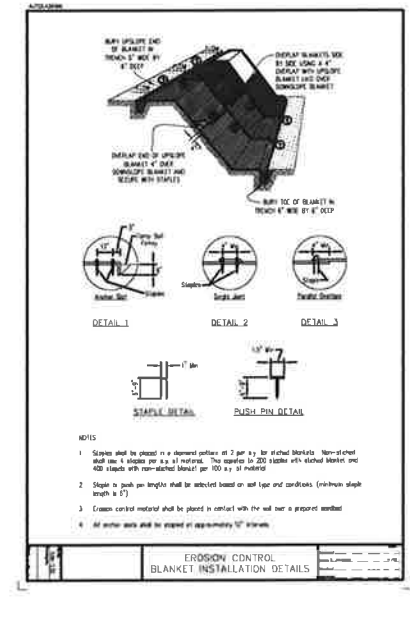
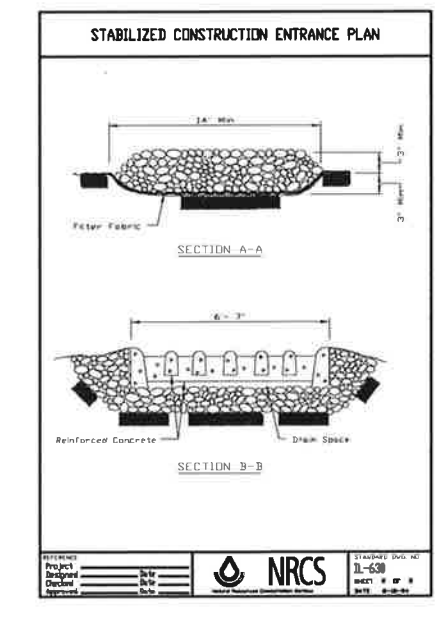
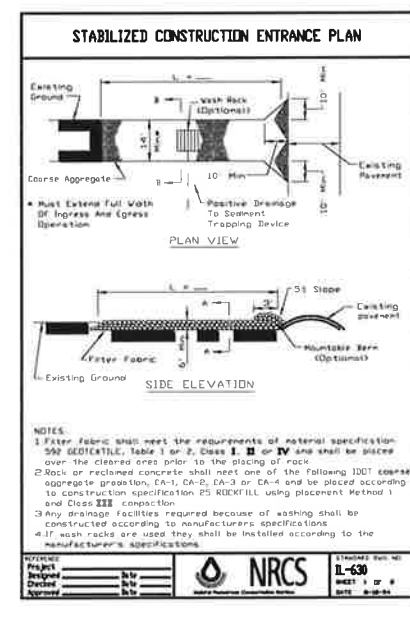
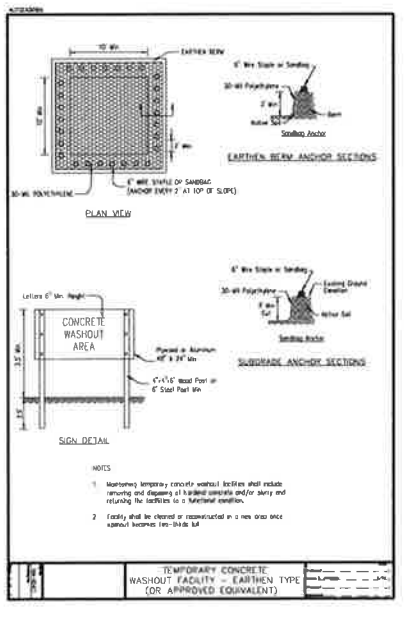
- PER KANE COUNTY STORMWATER ORDINANCE:**
1. THE CONDITION OF THE CONSTRUCTION SITE FOR WINTER SHUTDOWN SHALL BE ADDRESSED EARLY IN THE FALL GROWING SEASON SO THAT SLOPES AND OTHER BARE EARTH AREAS MAY BE STABILIZED WITH TEMPORARY AND/OR PERMANENT VEGETATIVE COVER FOR PROPER EROSION AND SEDIMENT CONTROL. ALL OPEN AREAS THAT ARE TO REMAIN IDLE THROUGHOUT THE WINTER SHALL RECEIVE TEMPORARY EROSION CONTROL MEASURES INCLUDING TEMPORARY SEEDING, MULCHING AND/OR EROSION CONTROL BLANKET PRIOR TO THE END OF THE FALL GROWING SEASON. THE AREAS TO BE WORKED BEYOND THE END OF THE GROWING SEASON MUST INCORPORATE STABILIZATION MEASURES THAT DO NOT RELY ON VEGETATIVE COVER SUCH AS EROSION CONTROL BLANKET AND HEAVY MULCHING.
 2. THE LIMITATION ON SITE DISTURBANCE IS IN RECOGNITION OF THE NEED TO PREVENT EROSION IN PREFERENCE TO CONTROLLING SEDIMENT. SITE DISTURBANCES SHALL NOT EXCEED 20 ACRES AT ANY ONE TIME UNLESS IT IS TO BALANCE CUT AND FILL, FOR WHICH A MAXIMUM OF 40 ACRES MAY BE DISTURBED AT ANY ONE TIME.

THE PRIMARY PURPOSE OF ALL SOIL EROSION AND SEDIMENT CONTROL BMP'S (BEST MANAGEMENT PRACTICES) IS TO PREVENT SEDIMENT FROM LEAVING THE SITE. ALL STORMWATER DISCHARGE LOCATIONS WITH A DIRECT CONNECTION TO THE SITE SHOULD BE MONITORED CLOSELY FOR EVIDENCE OF SEDIMENT. KDSWCD MAY REQUEST THAT ADDITIONAL BMP'S BE INSTALLED IN THE EVENT OF OFF-SITE SEDIMENT DISCHARGE OR HIGH POTENTIAL FOR DISCHARGE.

SOIL PROTECTION CHART

| STABILIZATION CHART | JAN | FEB | MAR | APR | MAY | JUN | JUL | AUG | SEP | OCT | NOV | DEC |
|---------------------|-----|-----|-----|-----|-----|-----|-----|-----|-----|-----|-----|-----|
| PERMANENT SEEDINGS | | | | | | | | | | | | |
| PERMANENT SEEDINGS | | | | | | | | | | | | |
| PERMANENT SEEDINGS | | | | | | | | | | | | |
| PERMANENT SEEDINGS | | | | | | | | | | | | |

NOTE: THIS CHART IS A GUIDE TO ASSIST THE CONTRACTOR IN UNDERSTANDING OPTIONS FOR AND SELECTION OF THE STABILIZATION PLAN. THIS CHART MAY BE DISCUSSED WITH THE LANDSCAPE ARCHITECT PRIOR TO THE START OF CONSTRUCTION.



Manhard CONSULTING LTD.

705 Brainerd Circle, Lombard, IL 60148
 708.261.8800
 708.261.8801
 708.261.8802
 708.261.8803
 708.261.8804
 708.261.8805
 708.261.8806
 708.261.8807
 708.261.8808
 708.261.8809
 708.261.8810

Professional Engineers • Professional Surveyors • Professional Geotechnical Engineers • Professional Environmental Engineers • Professional Landscape Architects • Professional Planners

THE CONSERVANCY - NEIGHBORHOOD 2A

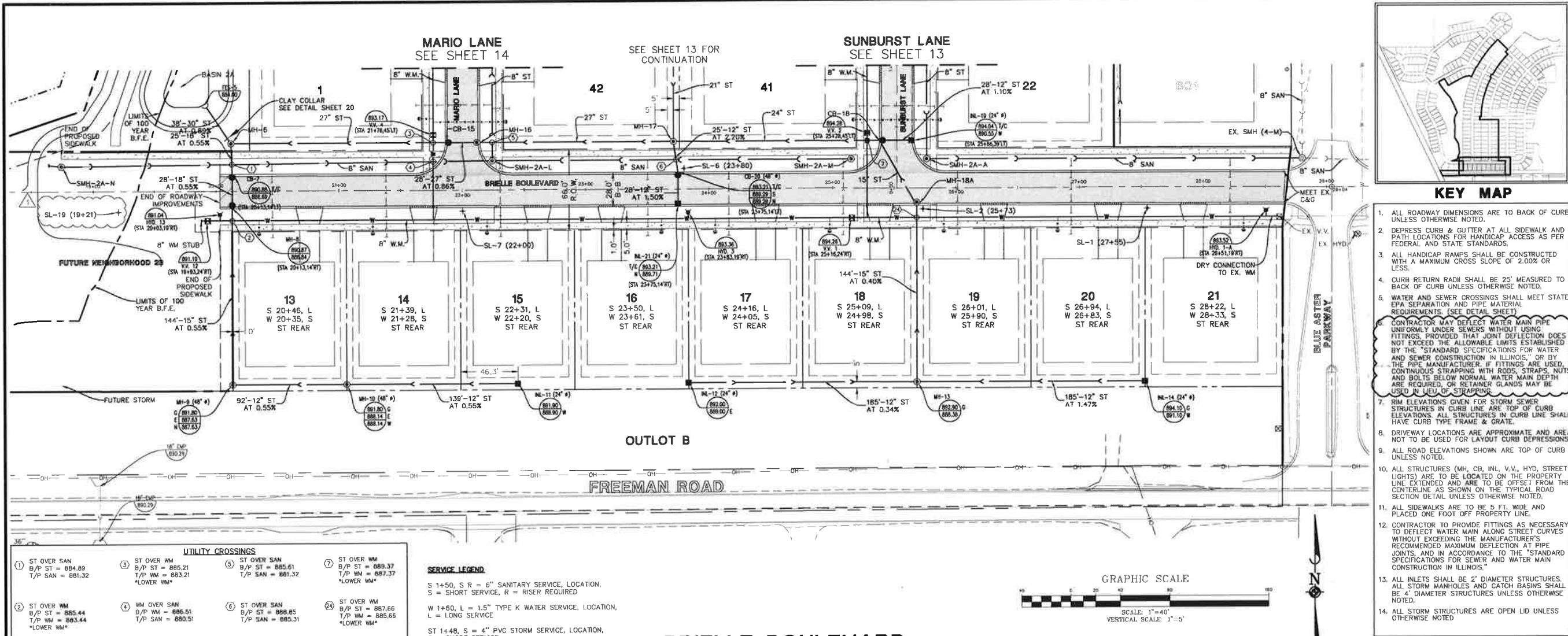
VILLAGE OF GILBERTS, ILLINOIS

SOIL EROSION & SEDIMENT CONTROL NOTES AND DETAILS

PENDING APPROVAL - NOT FOR CONSTRUCTION

PROJECT NO. JPD
 PROJECT ASSOC. JRH
 DRAWN BY BPH
 DATE 07/22/16
 SCALE: N.T.S.

SHEET 11 OF 23
 GDLGIL01



- ALL ROADWAY DIMENSIONS ARE TO BACK OF CURB UNLESS OTHERWISE NOTED.
- DEPRESS CURB & GUTTER AT ALL SIDEWALK AND PATH LOCATIONS FOR HANDICAP ACCESS AS PER FEDERAL AND STATE STANDARDS.
- ALL HANDICAP RAMPS SHALL BE CONSTRUCTED WITH A MAXIMUM CROSS SLOPE OF 2.00% OR LESS.
- CURB RETURN RADII SHALL BE 25' MEASURED TO BACK OF CURB UNLESS OTHERWISE NOTED.
- WATER AND SEWER CROSSINGS SHALL MEET STATE REQUIREMENTS. (SEE DETAIL SHEET)
- CONTRACTOR MAY DEFLECT WATER MAIN PIPE UNIFORMLY UNDER SEWERS WITHOUT USING FITTINGS, PROVIDED THAT JOINT DEFLECTION DOES NOT EXCEED THE ALLOWABLE LIMITS ESTABLISHED BY THE "STANDARD SPECIFICATIONS FOR WATER AND SEWER CONSTRUCTION IN ILLINOIS," OR BY THE PIPE MANUFACTURER. IF FITTINGS ARE USED, CONTINUOUS STRAPPING WITH RODS, STRAPS, NUTS AND BOLTS BELOW NORMAL WATER MAIN DEPTH ARE REQUIRED, OR RETAINER GLANDS MAY BE USED IN LIEU OF STRAPPING.
- MAN ELEVATIONS GIVEN FOR STORM SEWER STRUCTURES IN CURB LINE ARE TOP OF CURB ELEVATIONS. ALL STRUCTURES IN CURB LINE SHALL HAVE CURB TYPE FRAME & GRATE.
- DRIVEWAY LOCATIONS ARE APPROXIMATE AND AREA NOT TO BE USED FOR LAYOUT CURB DEPRESSIONS.
- ALL ROAD ELEVATIONS SHOWN ARE TOP OF CURB UNLESS NOTED.
- ALL STRUCTURES (MH, CB, INL, V.V., HYD, STREET LIGHTS) ARE TO BE LOCATED ON THE PROPERTY LINE EXTENDED AND ARE TO BE OFFSET FROM THE CENTERLINE AS SHOWN ON THE TYPICAL ROAD SECTION DETAIL UNLESS OTHERWISE NOTED.
- ALL SIDEWALKS ARE TO BE 5 FT. WIDE AND PLACED ONE FOOT OFF PROPERTY LINE.
- CONTRACTOR TO PROVIDE FITTINGS AS NECESSARY TO DEFLECT WATER MAIN ALONG STREET CURVES WITHOUT EXCEEDING THE MANUFACTURER'S RECOMMENDED MAXIMUM DEFLECTION AT PIPE JOINTS, AND IN ACCORDANCE TO THE "STANDARD SPECIFICATIONS FOR SEWER AND WATER MAIN CONSTRUCTION IN ILLINOIS."
- ALL INLETS SHALL BE 2' DIAMETER STRUCTURES. ALL STORM MANHOLES AND CATCH BASINS SHALL BE 4' DIAMETER STRUCTURES UNLESS OTHERWISE NOTED.
- ALL STORM STRUCTURES ARE OPEN LID UNLESS OTHERWISE NOTED.

UTILITY CROSSINGS

| | | | |
|--|--|--|---|
| 1 ST OVER SAN B/P ST = 884.89 T/P SAN = 881.32 | 3 ST OVER WM B/P ST = 885.21 T/P WM = 883.21 *LOWER WM* | 5 ST OVER SAN B/P ST = 885.61 T/P SAN = 881.32 | 7 ST OVER WM B/P ST = 885.37 T/P WM = 887.37 *LOWER WM* |
| 2 ST OVER WM B/P ST = 885.44 T/P WM = 883.44 *LOWER WM* | 4 WM OVER SAN B/P WM = 886.51 T/P SAN = 880.51 | 6 ST OVER SAN B/P ST = 888.85 T/P SAN = 885.31 | 24 ST OVER WM B/P ST = 887.66 T/P WM = 885.66 *LOWER WM* |

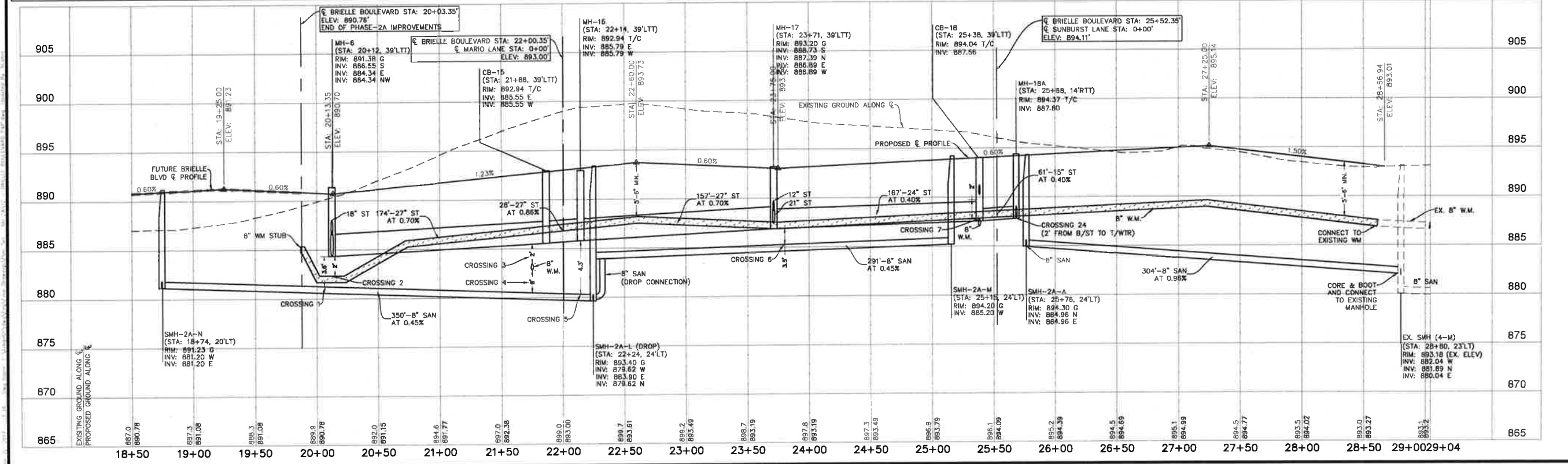
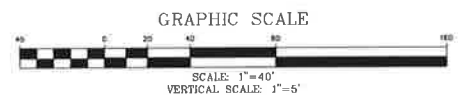
NOTE: WATER AND SEWER CROSSINGS SHALL MEET IEPA SEPARATION AND PIPE MATERIAL REQUIREMENTS. (SEE DETAIL SHEET)

SERVICE LEGEND

S 14+50, S R = 6" SANITARY SERVICE, LOCATION,
S = SHORT SERVICE, R = RISER REQUIRED

W 14+60, L = 1.5" TYPE K WATER SERVICE, LOCATION,
L = LONG SERVICE

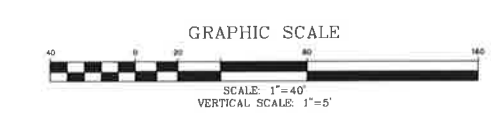
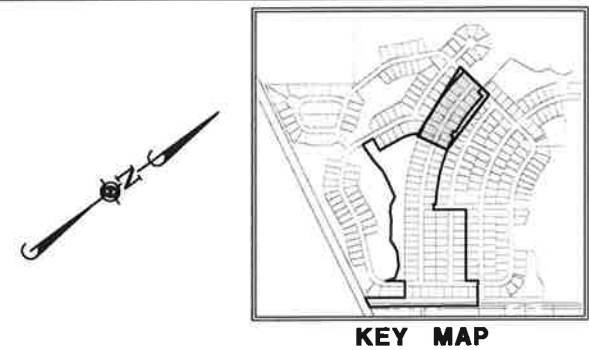
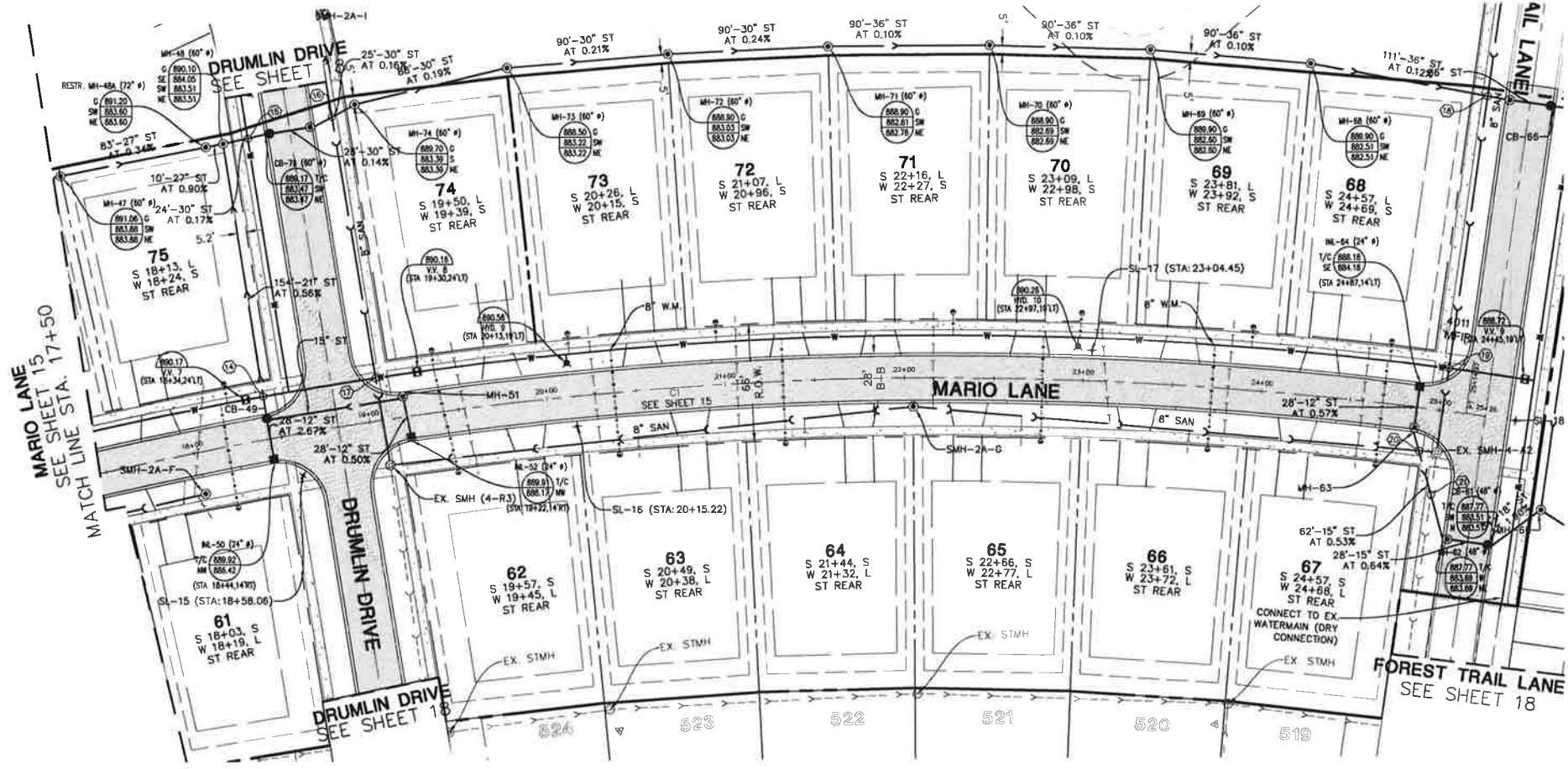
ST 14+48, S = 4" PVC STORM SERVICE, LOCATION,
S = SHORT SERVICE



Manhard CONSULTING LLC
 1800 Sycamore Drive, Suite 100, Naperville, IL 60563
 630-335-8800
 Core Engineers • Surveyors • Water Resources Engineers • Water & Wastewater Engineers
 Construction Managers • Environmental Scientists • Landscape Architects • Planners

THE CONSERVANCY - NEIGHBORHOOD 2A
VILLAGE OF GILBERTS, ILLINOIS
BRIELLE BOULEVARD - PLAN & PROFILE STA. 20+00 - 29+04
 PENDING APPROVAL - NOT FOR CONSTRUCTION

PROJ. NO.: 130
 PROJ. ASSOC.: BRH
 DRAWN BY: BRH
 DATE: 07/22/16
 SCALE: 1/2"=40' V1=5'
 SHEET
12 OF 23
 GDL.GIL.01



| UTILITY CROSSINGS | | | |
|-------------------|--|----|--|
| 14 | ST OVER WM B/P ST = 884.63 T/P WM = 882.63 *LOWER WM* | 17 | WM OVER SAN B/P WM = 883.44 T/P SAN = 879.69 |
| 15 | ST OVER WM SEE SHEET 18 | 18 | ST OVER SAN SEE SHEET 18 |
| 16 | ST OVER SAN SEE SHEET 18 | 19 | WM OVER SAN B/P WM = 882.22 T/P SAN = 879.74 |
| 20 | ST OVER SAN B/P ST = 883.75 T/P SAN = 881.40 | 21 | ST OVER SAN B/P ST = 883.61 T/P SAN = 879.16 |

NOTE: WATER AND SEWER CROSSINGS SHALL MEET IEPA SEPARATION AND PIPE MATERIAL REQUIREMENTS. (SEE DETAIL SHEET)

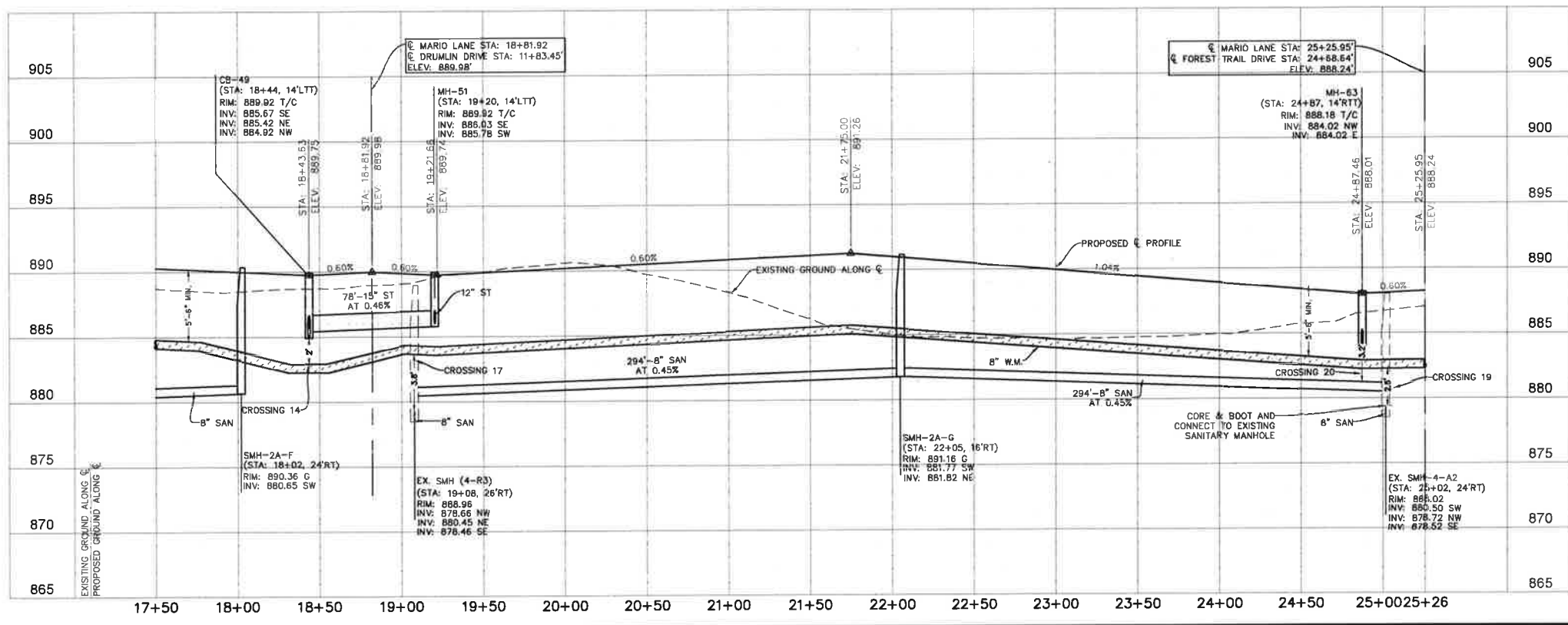
SERVICE LEGEND:

S 1+50, S R = 6" SANITARY SERVICE, LOCATION,
S = SHORT SERVICE, R = RISER REQUIRED

W 1+60, L = 1.5" TYPE K WATER SERVICE, LOCATION,
L = LONG SERVICE

ST 1+48, S = 4" PVC STORM SERVICE, LOCATION,
S = SHORT SERVICE

MARIO LANE



- ALL ROADWAY DIMENSIONS ARE TO BACK OF CURB UNLESS OTHERWISE NOTED.
- DEPRESS CURB & GUTTER AT ALL SIDEWALK AND PATH LOCATIONS FOR HANDICAP ACCESS AS PER FEDERAL AND STATE STANDARDS.
- ALL HANDICAP RAMPS SHALL BE CONSTRUCTED WITH A MAXIMUM CROSS SLOPE OF 2.00% OR LESS.
- CURB RETURN RADI SHALL BE 25' MEASURED TO BACK OF CURB UNLESS OTHERWISE NOTED.
- WATER AND SEWER CROSSINGS SHALL MEET STATE IEPA SEPARATION AND PIPE MATERIAL REQUIREMENTS. (SEE DETAIL SHEET)
- CONTRACTOR MAY DEFLECT WATER MAIN PIPE UNIFORMLY UNDER SEWERS WITHOUT USING FITTINGS, PROVIDED THAT JOINT DEFLECTION DOES NOT EXCEED THE ALLOWABLE LIMITS ESTABLISHED BY THE "STANDARD SPECIFICATIONS FOR WATER AND SEWER CONSTRUCTION IN ILLINOIS," OR BY THE PIPE MANUFACTURER, IF FITTINGS ARE USED, CONTINUOUS STRAPPING WITH RODS, STRAPS, NUTS AND BOLTS BELOW NORMAL WATER MAIN DEPTH ARE REQUIRED, OR RETAINER CLANDS MAY BE USED IN LIEU OF STRAPPING.
- RIM ELEVATIONS GIVEN FOR STORM SEWER STRUCTURES IN CURB LINE ARE TOP OF CURB ELEVATIONS. ALL STRUCTURES IN CURB LINE SHALL HAVE CURB TYPE FRAME & GRATE.
- DRIVEWAY LOCATION ARE APPROXIMATE AND AREA NOT TO BE USED FOR LAYOUT OF CURB DEPRESSIONS.
- ALL ROAD ELEVATIONS SHOWN ARE TOP OF CURB UNLESS NOTED.
- ALL STRUCTURES (MH, CB, INL, V.V., HYD, STREET LIGHTS) ARE TO BE LOCATED ON THE PROPERTY LINE EXTENDED AND ARE TO BE OFFSET FROM THE CENTERLINE AS SHOWN ON THE TYPICAL ROAD SECTION DETAIL UNLESS OTHERWISE NOTED.
- ALL SIDEWALKS ARE TO BE 5 FT. WIDE AND PLACED ONE FOOT OFF PROPERTY LINE.
- CONTRACTOR TO PROVIDE FITTINGS AS NECESSARY TO DEFLECT WATER MAIN ALONG STREET CURVES WITHOUT EXCEEDING THE MANUFACTURER'S RECOMMENDED MAXIMUM DEFLECTION AT PIPE JOINTS, AND IN ACCORDANCE TO THE "STANDARD SPECIFICATIONS FOR SEWER AND WATER MAIN CONSTRUCTION IN ILLINOIS."
- ALL INLETS SHALL BE 2' DIAMETER STRUCTURES. ALL STORM MANHOLES AND CATCH BASINS SHALL BE 4' DIAMETER STRUCTURES UNLESS OTHERWISE NOTED.
- ALL STORM STRUCTURES ARE OPEN LID UNLESS OTHERWISE NOTED.

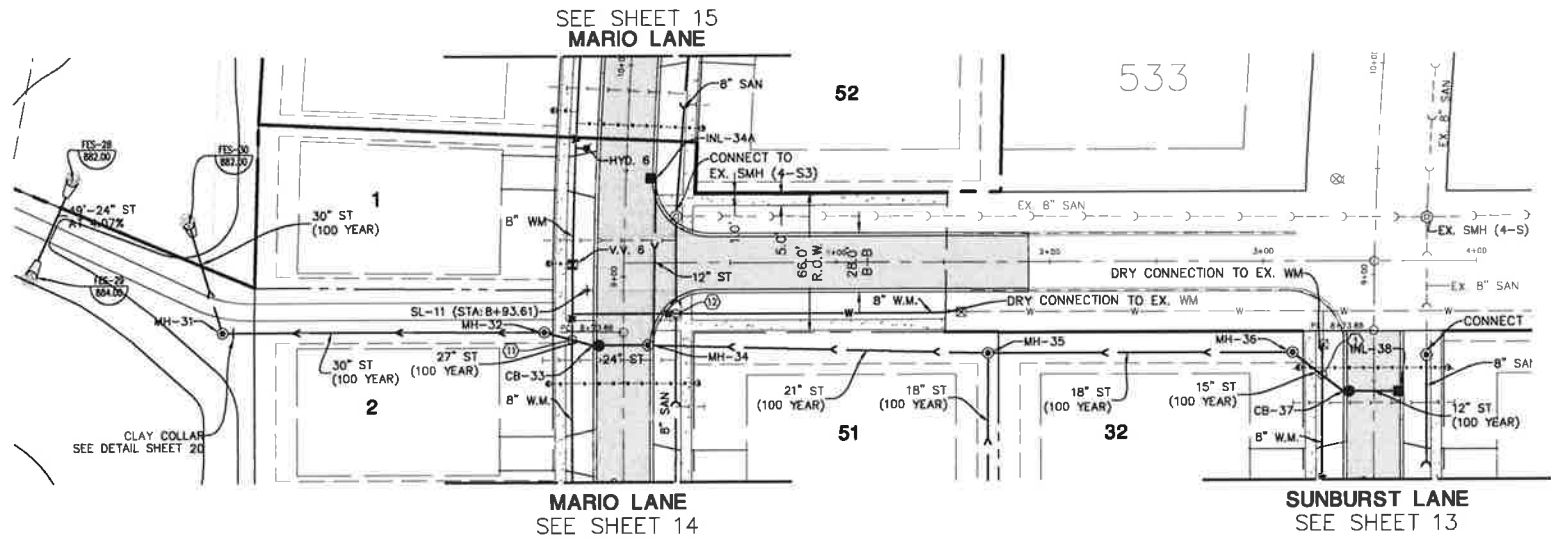
Manhard CONSULTING
 700 S. Sangamon Ave., Springfield, IL 62761
 P: 217.244.8800 F: 217.244.8801
 www.manhardconsulting.com
 Civil Engineers • Surveyors • Water Resource Engineers • Water & Wastewater Engineers
 Construction Managers • Environmental Scientists • Landscape Architects • Planners

THE CONSERVANCY - NEIGHBORHOOD 2A
 VILLAGE OF GILBERTS, ILLINOIS
MARIO LANE - PLAN & PROFILE STA. 17+50 - 25+26

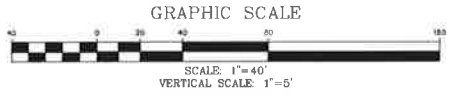
PENDING APPROVAL - NOT FOR CONSTRUCTION

SHEET
16 OF **23**
 GDL_GIL_01

PROJ. NO.: 160
 PROJ. AREA: 16H
 DRAWN BY: NCL
 DATE: 07/22/16
 SCALE: 1/2" = 1'-0"



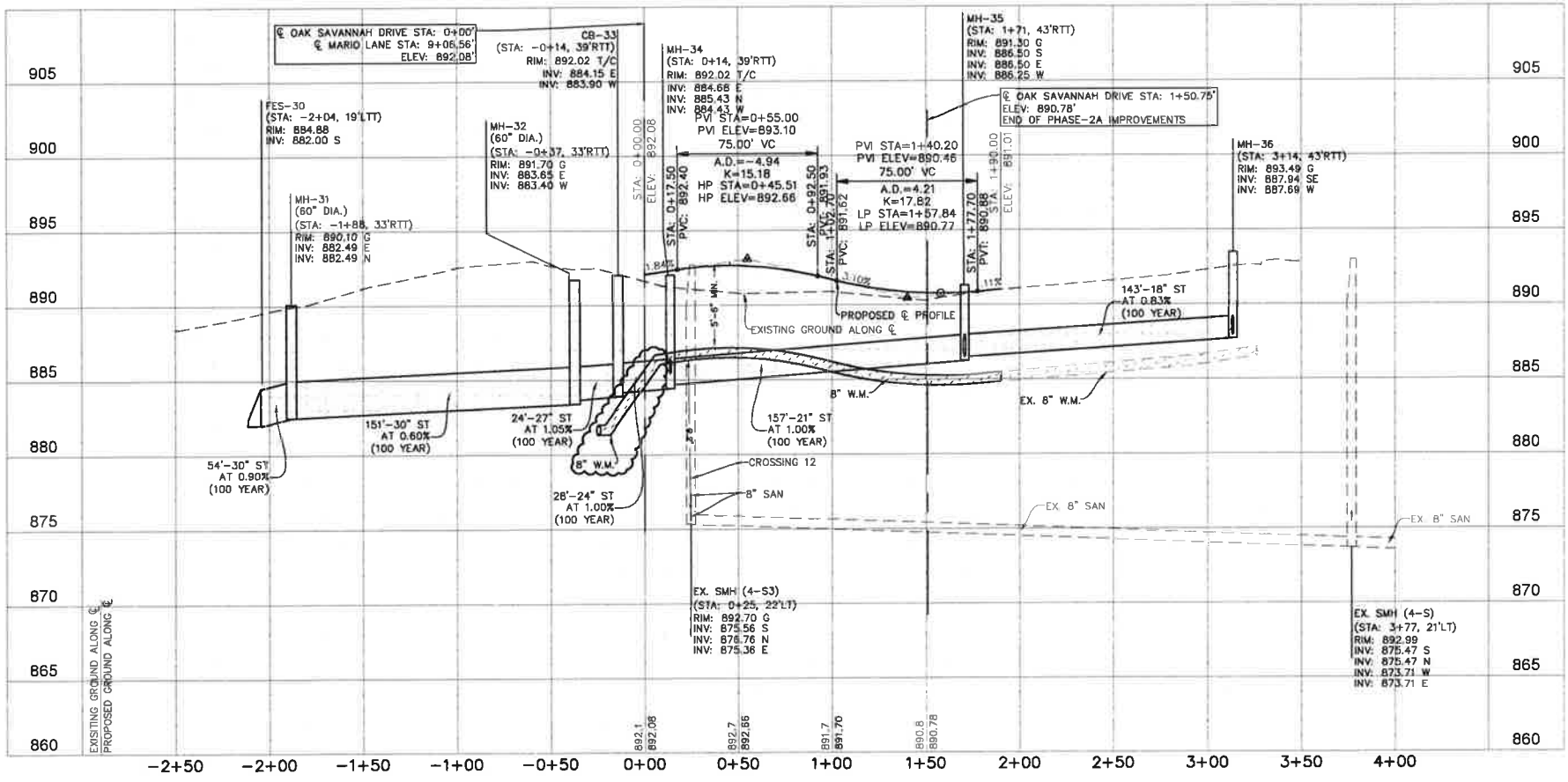
KEY MAP



UTILITY CROSSINGS
 (1) ST OVER WM SEE SHEET 14 (2) WM OVER SAN SEE SHEET 14
 NOTE: WATER AND SEWER CROSSINGS SHALL MEET EPA SEPARATION AND PIPE MATERIAL REQUIREMENTS. (SEE DETAIL SHEET)

SERVICE LEGEND:
 S 1+50, S R = 6" SANITARY SERVICE, LOCATION, S = SHORT SERVICE, R = RISER REQUIRED
 W 1+60, L = 1.5" TYPE K WATER SERVICE, LOCATION, L = LONG SERVICE
 ST 1+48, S = 4" PVC STORM SERVICE, LOCATION, S = SHORT SERVICE

OAK SAVANNAH DRIVE



1. ALL ROADWAY DIMENSIONS ARE TO BACK OF CURB UNLESS OTHERWISE NOTED.
2. DEPRESS CURB & GUTTER AT ALL SIDEWALK AND PATH LOCATIONS FOR HANDICAP ACCESS AS PER FEDERAL AND STATE STANDARDS.
3. ALL HANDICAP RAMPS SHALL BE CONSTRUCTED WITH A MAXIMUM CROSS SLOPE OF 2.00% OR LESS.
4. CURB RETURN RADI SHALL BE 25' MEASURED TO BACK OF CURB UNLESS OTHERWISE NOTED.
5. WATER AND SEWER CROSSINGS SHALL MEET STATE EPA SEPARATION AND PIPE MATERIAL REQUIREMENTS. (SEE DETAIL SHEET)
6. CONTRACTOR MAY DEFLECT WATER MAIN PIPE UNIFORMLY UNDER SEWERS WITHOUT USING FITTINGS, PROVIDED THAT JOINT DEFLECTION DOES NOT EXCEED THE ALLOWABLE LIMITS ESTABLISHED BY THE "STANDARD SPECIFICATIONS FOR WATER AND SEWER CONSTRUCTION IN ILLINOIS," OR BY THE PIPE MANUFACTURER. IF FITTINGS ARE USED, CONTINUOUS STRAPPING WITH RODS, STRAPS, NUTS AND BOLTS BELOW NORMAL WATER MAIN DEPTH ARE REQUIRED, OR RETAINER GLANDS MAY BE USED IN LIEU OF STRAPPING.
7. RIM ELEVATIONS GIVEN FOR STORM SEWER STRUCTURES IN CURB LINE ARE TOP OF CURB ELEVATIONS. ALL STRUCTURES IN CURB LINE SHALL HAVE CURB TYPE FRAME & GRATE.
8. DRIVEWAY LOCATION AREA APPROXIMATE AND ARE NOT TO BE USED FOR LAYOUT OF CURB DEPRESSIONS.
9. ALL ROAD ELEVATIONS SHOWN ARE TOP OF CURB UNLESS NOTED.
10. ALL STRUCTURES (MH, CB, INL, V.V., HYD, STREET LIGHTS) ARE TO BE LOCATED ON THE PROPERTY LINE EXTENDED AND ARE TO BE OFFSET FROM THE CENTERLINE AS SHOWN ON THE TYPICAL ROAD SECTION DETAIL UNLESS OTHERWISE NOTED.
11. ALL SIDEWALKS ARE TO BE 5 FT. WIDE AND PLACED ONE FOOT OFF PROPERTY LINE.
12. CONTRACTOR TO PROVIDE FITTINGS AS NECESSARY TO DEFLECT WATER MAIN ALONG STREET CURVES WITHOUT EXCEEDING THE MANUFACTURER'S RECOMMENDED MAXIMUM DEFLECTION AT PIPE JOINTS, AND IN ACCORDANCE TO THE "STANDARD SPECIFICATIONS FOR SEWER AND WATER MAIN CONSTRUCTION IN ILLINOIS."
13. ALL INLETS SHALL BE 2' DIAMETER STRUCTURES. ALL STORM MANHOLES AND CATCH BASINS SHALL BE 4' DIAMETER STRUCTURES UNLESS OTHERWISE NOTED.
14. ALL STORM STRUCTURES ARE OPEN LID UNLESS OTHERWISE NOTED.

| DATE | REVISIONS |
|----------|--------------------------------------|
| 06/22/17 | PRELIMINARY REVIEW |
| 06/22/17 | REVISED PER REGIONAL STORMWATER PLAN |
| 3/15/17 | REVISED PER VILLAGE REVIEW |
| 10/07/16 | REVISED PER VILLAGE REVIEW |

Manhard CONSULTING
 700 Springwood Drive, Lombard, IL 60148
 708.930.8100
 manhard.com
 Civil Engineers • Surveyors • Water Resource Engineers • Water & Wastewater Engineers
 Construction Managers • Environmental Scientists • Landscape Architects • Planners

THE CONSERVANCY - NEIGHBORHOOD 2A
 VILLAGE OF GILBERTS, ILLINOIS
 OAK SAVANNAH DR - PLAN & PROFILE

PENDING APPROVAL - NOT FOR CONSTRUCTION



KEY MAP

UTILITY CROSSINGS

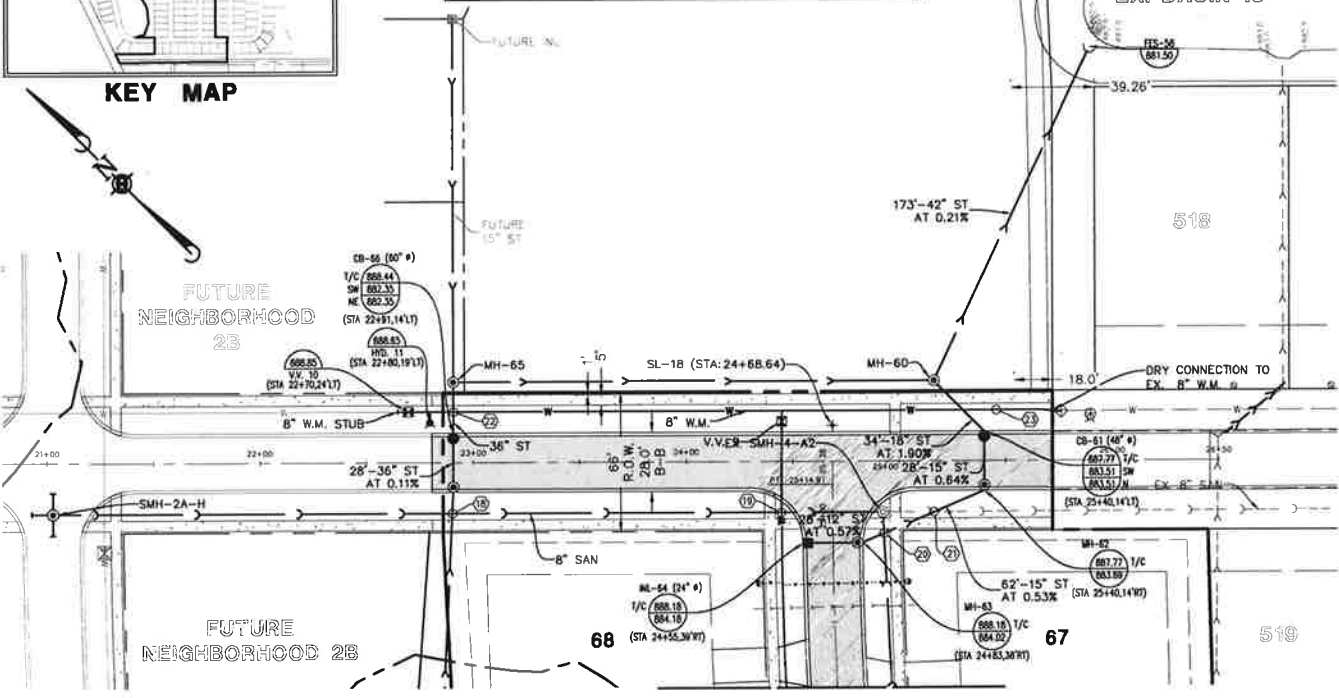
| | | | | | | | | |
|---|---|---|--------------------------------|---|--------------------------------|--------------------------------|---|---|
| 15 ST OVER WM B/P ST = 884.04 T/P WM = 882.04 *LOWER WM* | 16 ST OVER SAN B/P ST = 884.12 T/P SAN = 880.32 | 17 ST OVER SAN B/P ST = 884.88 T/P SAN = 880.30 | 18 WM OVER SAN SEE SHEET 16 | 19 ST OVER WM B/P ST = 883.76 T/P WM = 881.76 *LOWER WM* | 20 ST OVER SAN SEE SHEET 16 | 21 ST OVER SAN SEE SHEET 16 | 22 ST OVER WM B/P ST = 883.25 T/P WM = 881.25 *LOWER WM* | 23 ST OVER WM B/P ST = 883.25 T/P WM = 881.25 *LOWER WM* |
|---|---|---|--------------------------------|---|--------------------------------|--------------------------------|---|---|

NOTE: WATER AND SEWER CROSSINGS SHALL MEET IEPA SEPARATION AND PIPE MATERIAL REQUIREMENTS. (SEE DETAIL SHEET)

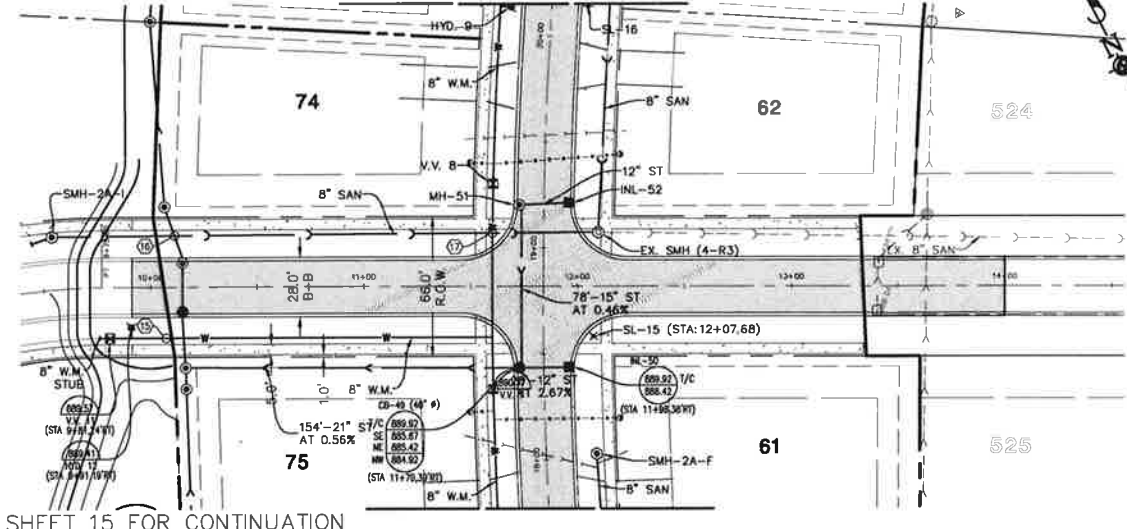
1. ALL ROADWAY DIMENSIONS ARE TO BACK OF CURB UNLESS OTHERWISE NOTED.
2. DEPRESS CURB & GUTTER AT ALL SIDEWALK AND PATH LOCATIONS FOR HANDICAP ACCESS AS PER FEDERAL AND STATE STANDARDS.
3. ALL HANDICAP RAMPS SHALL BE CONSTRUCTED WITH A MAXIMUM CROSS SLOPE OF 2.00% OR LESS.
4. CURB RETURN RADIUS SHALL BE 25' MEASURED TO BACK OF CURB UNLESS OTHERWISE NOTED.
5. WATER AND SEWER CROSSINGS SHALL MEET STATE EPA SEPARATION AND PIPE MATERIAL REQUIREMENTS. (SEE DETAIL SHEET)
6. CONTRACTOR MAY DEFLECT WATER MAIN PIPE UNIFORMLY UNDER SEWERS WITHOUT USING FITTINGS, PROVIDED THAT JOINT DEFLECTION DOES NOT EXCEED THE ALLOWABLE LIMITS ESTABLISHED BY THE STANDARD SPECIFICATIONS FOR WATER AND SEWER CONSTRUCTION IN ILLINOIS, OR BY THE PIPE MANUFACTURER. IF FITTINGS ARE USED, CONTINUOUS STRAPPING WITH RODS, STRAPS, NUTS AND BOLTS BELOW NORMAL WATER MAIN DEPTH ARE REQUIRED. OR RETAINERS & SANDS MAY BE USED IN LIEU OF STRAPPING.
7. RIM ELEVATIONS GIVEN FOR STORM SEWER STRUCTURES IN CURB LINE ARE TOP OF CURB ELEVATIONS. ALL STRUCTURES IN CURB LINE SHALL HAVE CURB TYPE FRAME & GRATE.
8. DRIVEWAY LOCATIONS ARE APPROXIMATE AND ARE NOT TO BE USED FOR LAYOUT OF CURB DEPRESSIONS.
9. ALL ROAD ELEVATIONS SHOWN ARE TOP OF CURB UNLESS NOTED.
10. ALL STRUCTURES (MH, CB, INL, V.V., HYD. STREET LIGHTS) ARE TO BE LOCATED ON THE PROPERTY LINE EXTENDED AND ARE TO BE OFFSET FROM THE CENTERLINE AS SHOWN ON THE TYPICAL ROAD SECTION DETAIL UNLESS OTHERWISE NOTED.
11. ALL SIDEWALKS ARE TO BE 5 FT. WIDE AND PLACED ONE FOOT OFF PROPERTY LINE.
12. CONTRACTOR TO PROVIDE FITTINGS AS NECESSARY TO DEFLECT WATER MAIN ALONG STREET CURVES WITHOUT EXCEEDING THE MANUFACTURER'S RECOMMENDED MAXIMUM DEFLECTION AT PIPE JOINTS, AND IN ACCORDANCE TO THE STANDARD SPECIFICATIONS FOR SEWER AND WATER MAIN CONSTRUCTION IN ILLINOIS.
13. ALL INLETS SHALL BE 2' DIA. STRUCTURES. ALL STORM MANHOLES AND CATCH BASINS SHALL BE 4' DIA. STRUCTURES UNLESS OTHERWISE NOTED.
14. ALL STORM STRUCTURES ARE OPEN LID UNLESS OTHERWISE NOTED.



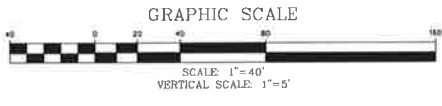
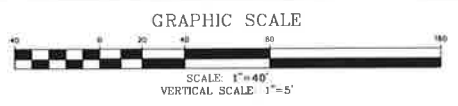
KEY MAP



SEE SHEET 16 FOR CONTINUATION



SEE SHEET 15 FOR CONTINUATION



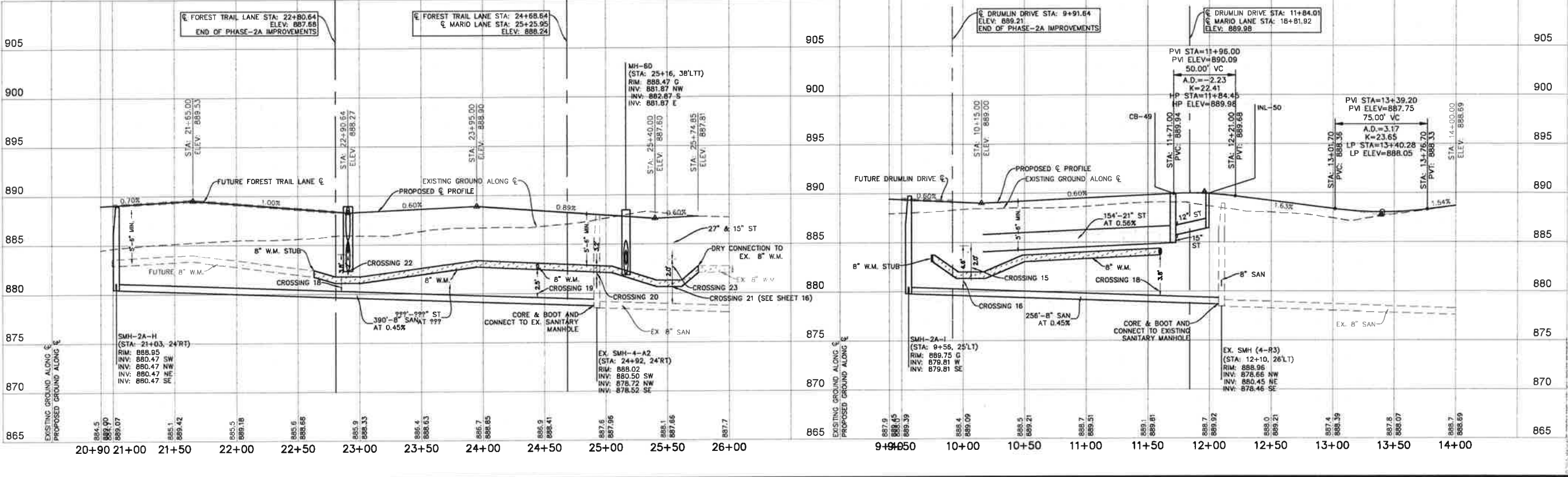
MARIO LANE
SEE SHEET 16

SERVICE LEGEND
S 1+50, S R = 6" SANITARY SERVICE, LOCATION,
S = SHORT SERVICE, R = RISER REQUIRED
W 1+60, L = 1.5" TYPE K WATER SERVICE, LOCATION,
L = LONG SERVICE
ST 1+48, S = 4" PVC STORM SERVICE, LOCATION,
S = SHORT SERVICE

MARIO LANE
SEE SHEET 15

FOREST TRAIL LANE

DRUMLIN DRIVE



| DATE | REVISION |
|----------|---------------------------------------|
| 06/25/07 | PRELIMINARY REVIEW |
| 06/27/07 | REVISION PER REGIONAL STORMWATER PLAN |
| 06/27/07 | REVISION PER REGIONAL STORMWATER PLAN |
| 07/17/07 | REVISION PER VILLAGE REVIEW |
| 07/17/07 | REVISION PER VILLAGE REVIEW |
| 10/07/07 | REVISION PER VILLAGE REVIEW |

Manhard CONSULTING LTD.

700 Spring Dale, Lombard, IL 60148
 630.836.8811 FAX 630.836.8811
 Civil Engineers • Surveyors • Water Resource Engineers • Water & Wastewater Engineers
 Construction Managers • Environmental Scientists • Landscape Architects • Planners

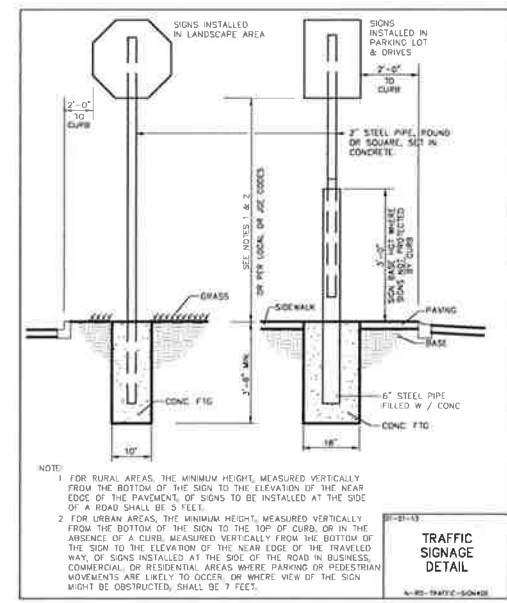
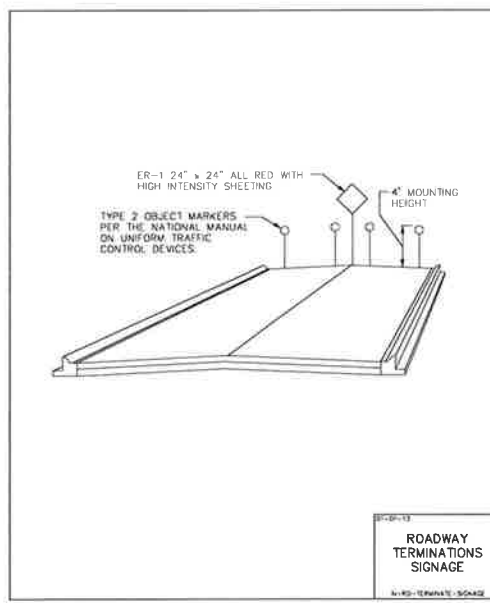
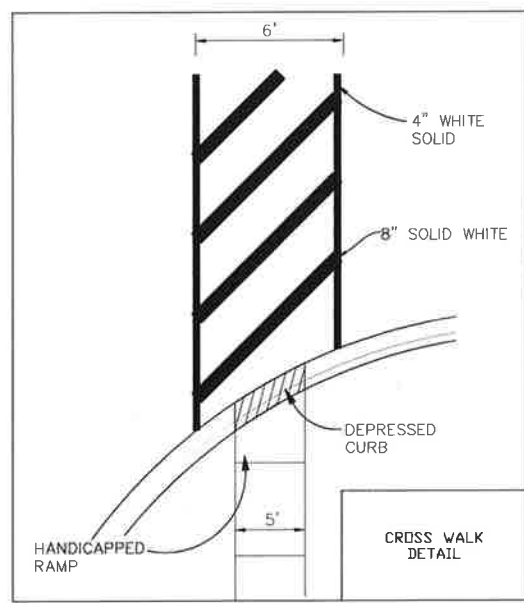
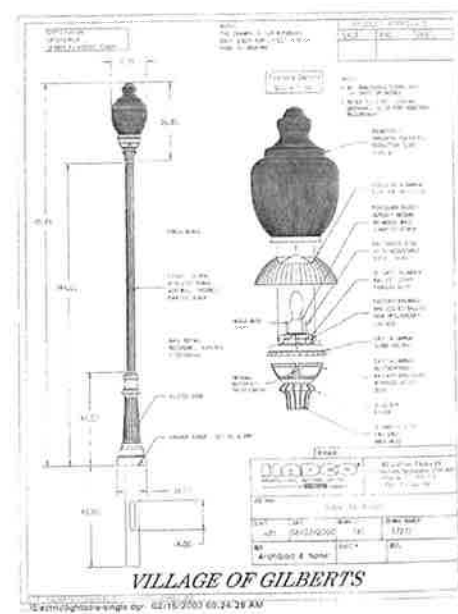
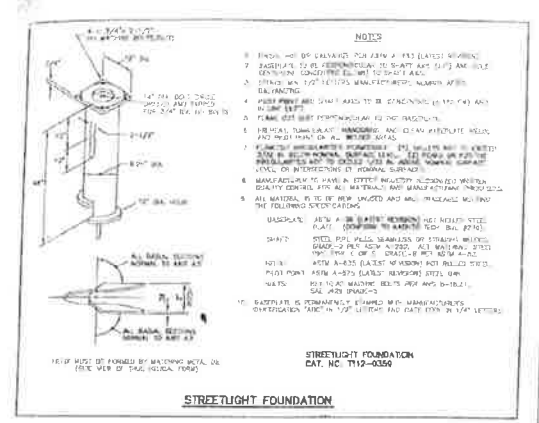
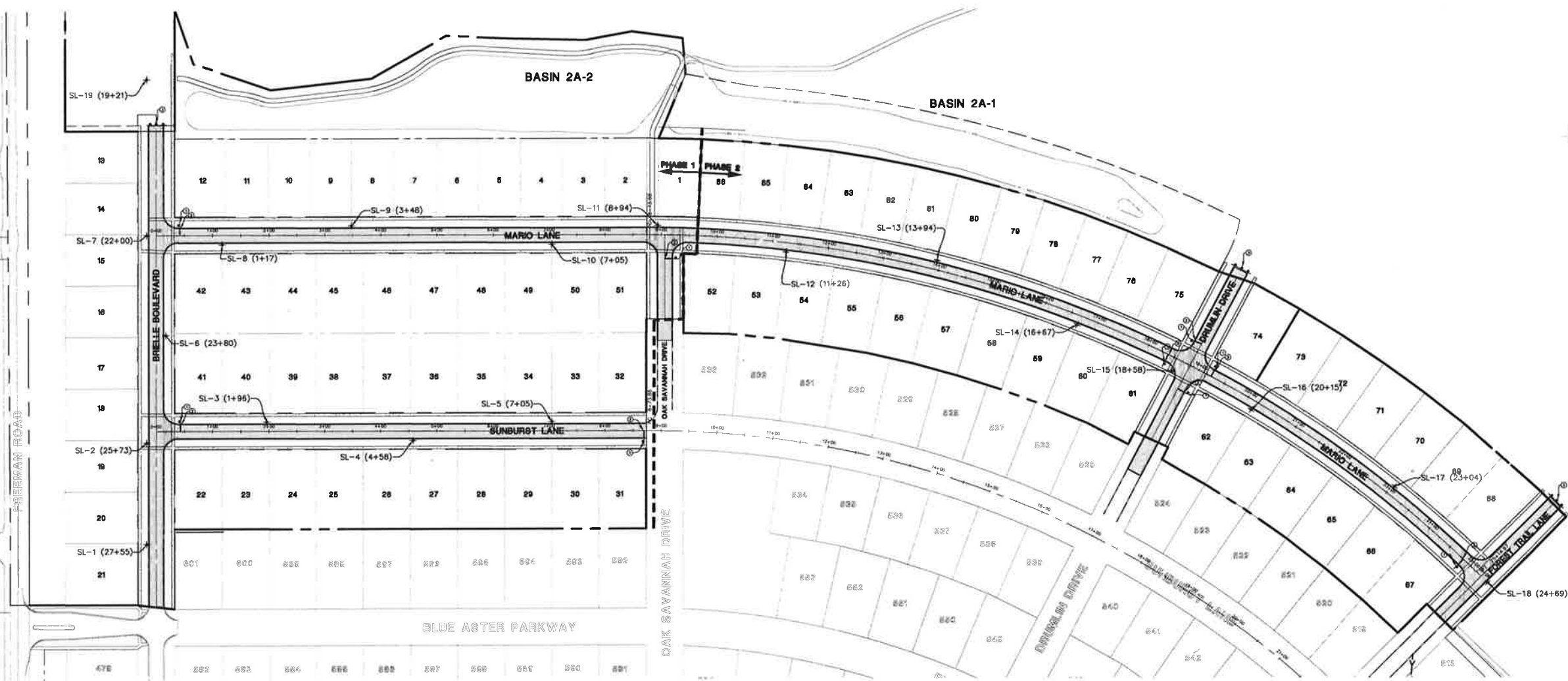
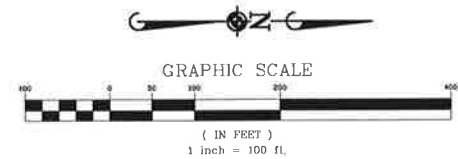
THE CONSERVANCY - NEIGHBORHOOD 2A
 VILLAGE OF GILBERTS, ILLINOIS
 DRUMLIN DR & FOREST TRAIL LANE PLAN & PROFILE

PROJ. NO.: JPD
 PROJ. AREA: JRH
 DRAWN BY: NCL
 DATE: 07/22/16
 SCALE: 11"=40' HORIZ.
 1"=5' VERT.

SHEET
18 OF **23**
 GDL/GIL/01

PENDING APPROVAL - NOT FOR CONSTRUCTION

- LEGEND**
- ⊕ STREET LIGHT
 - ⊙ STOP SIGN-R1 (30" x 30")
 - ⊖ 24" WHITE STOP BAR
 - ⊖ ROAD TERMINATION SIGNAGE (SEE DETAIL)



| DATE | REVISION | BY | CHK |
|----------|----------------------------|----|-----|
| 07/28/11 | REVISED PER VILLAGE REVIEW | | |
| 07/29/11 | REVISED PER VILLAGE REVIEW | | |
| 07/29/11 | REVISED PER VILLAGE REVIEW | | |
| 07/29/11 | REVISED PER VILLAGE REVIEW | | |

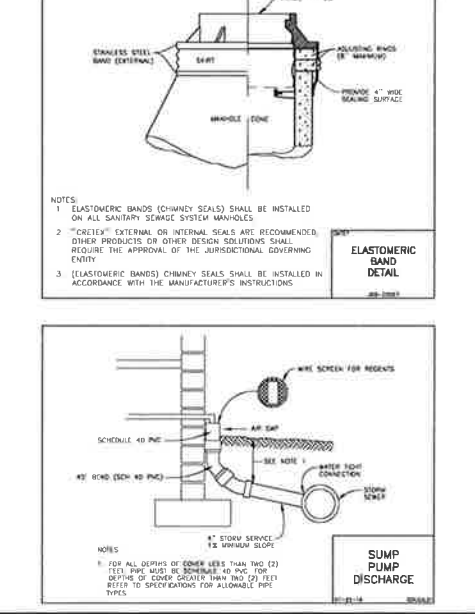
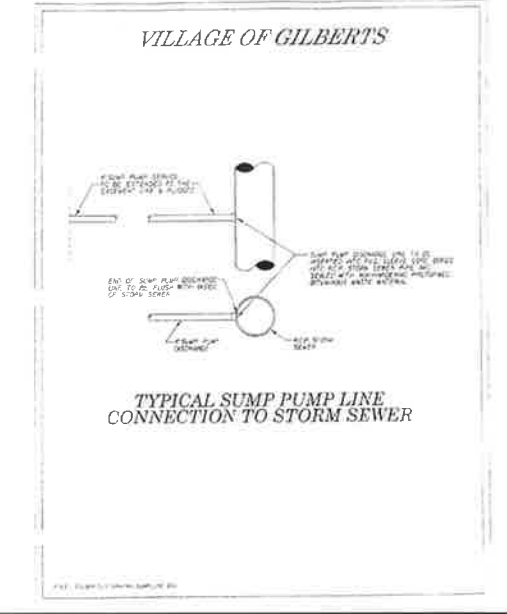
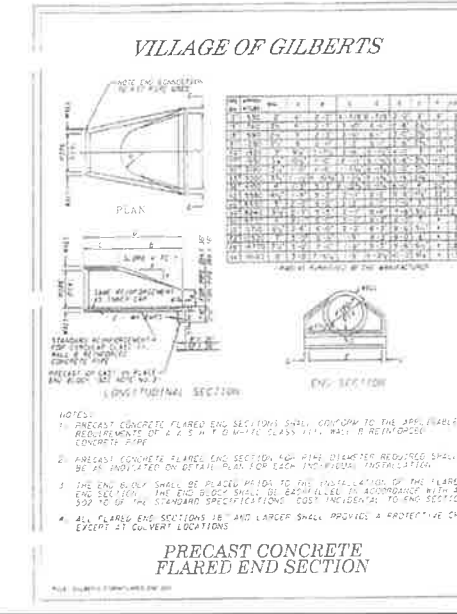
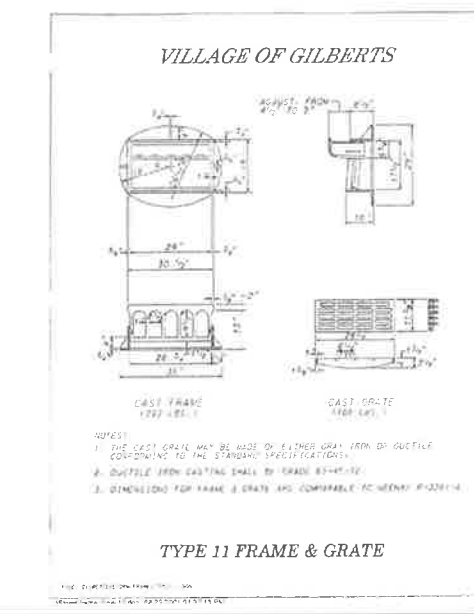
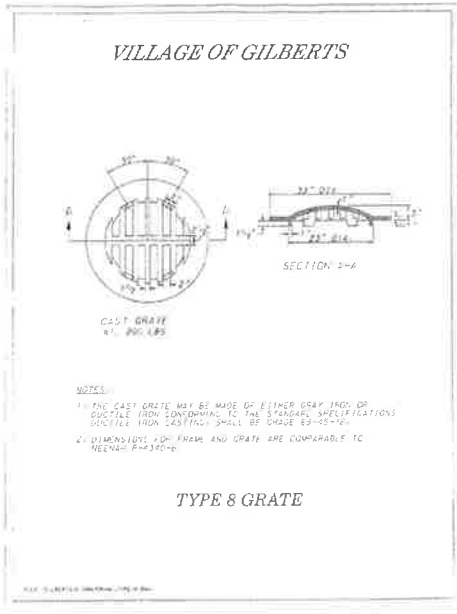
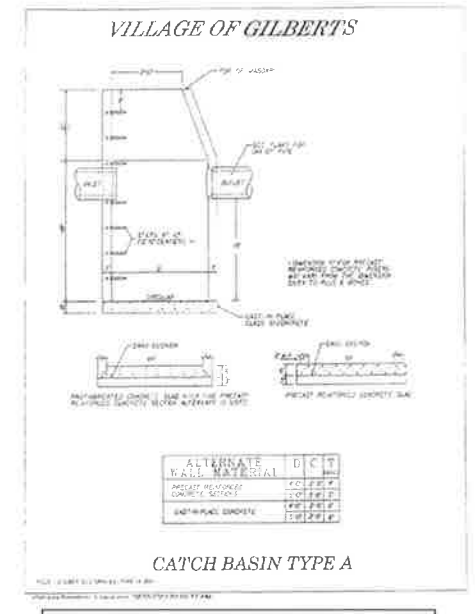
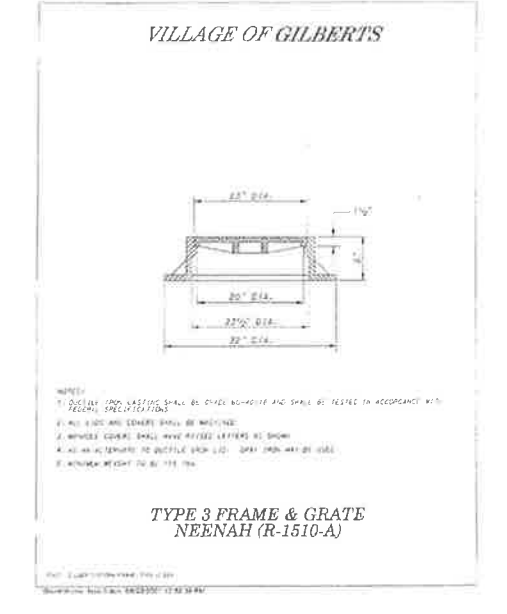
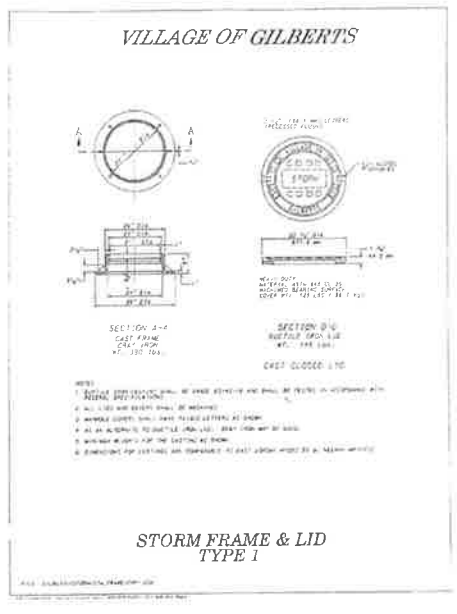
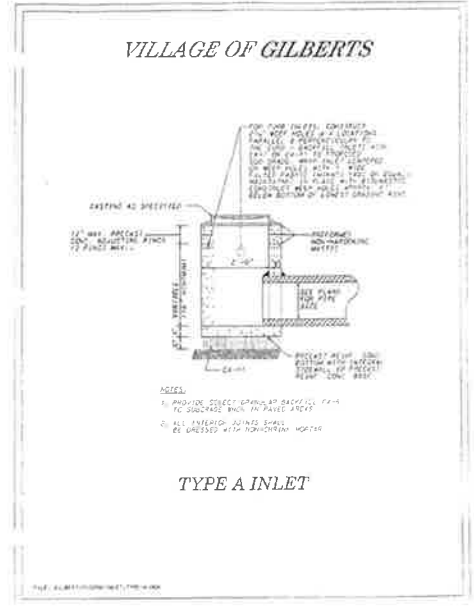
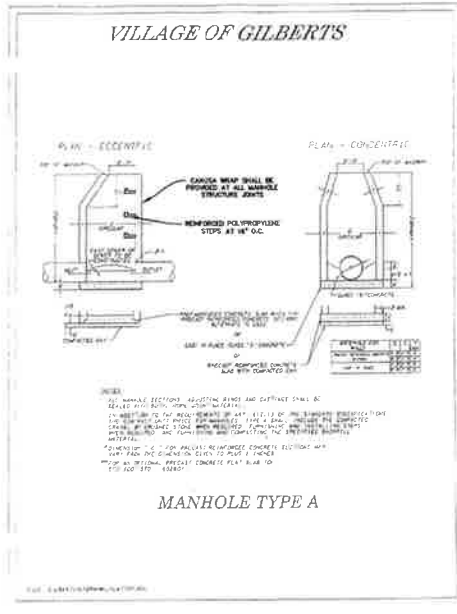
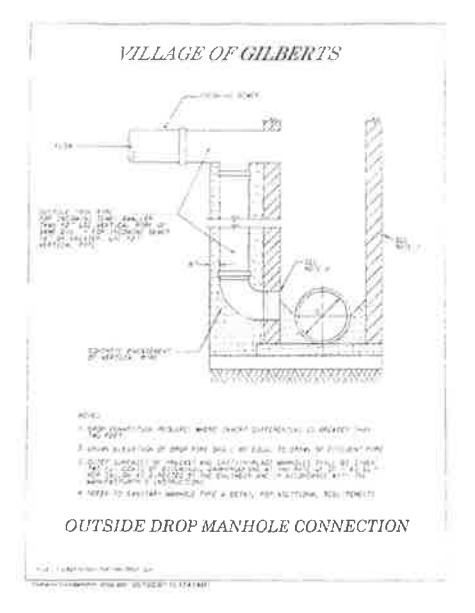
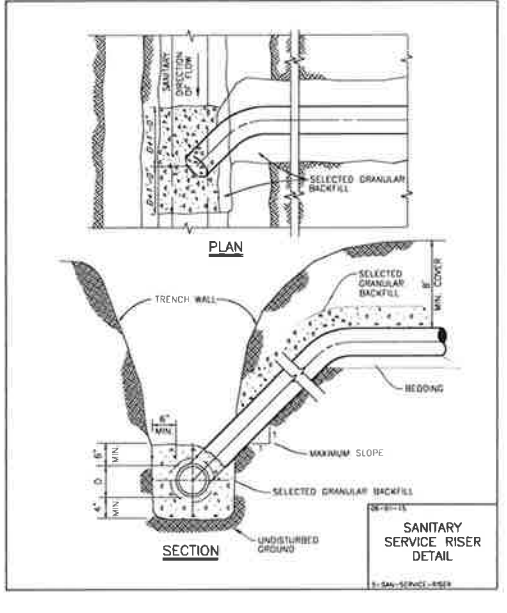
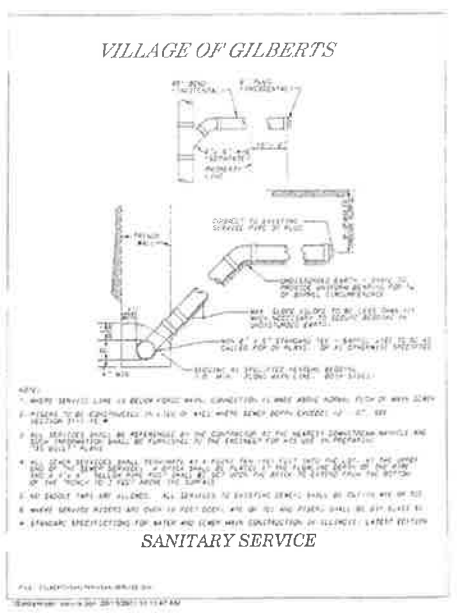
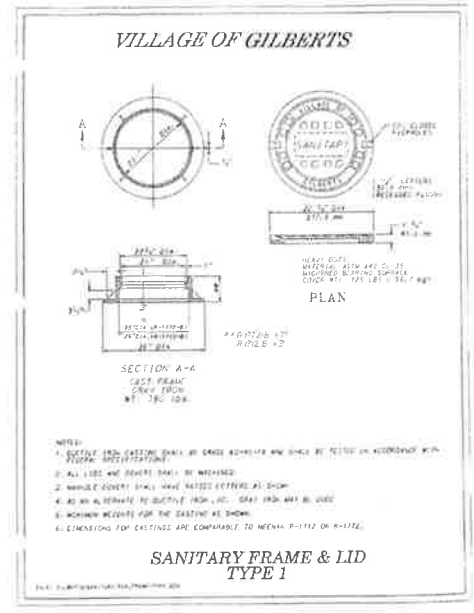
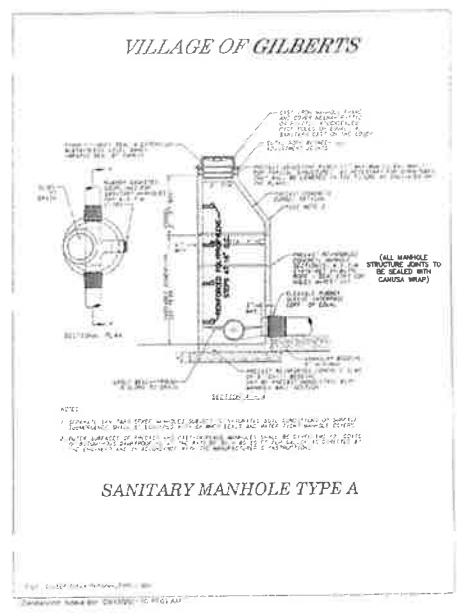
Manhard CONSULTING

700 Springer Drive, Lombard, IL 60148
 630.944.8800
 630.944.8801
 630.944.8802
 630.944.8803
 630.944.8804
 630.944.8805
 630.944.8806
 630.944.8807
 630.944.8808
 630.944.8809
 630.944.8810

Construction Management • Environmental Scientists • Landscaping Architects • Planners
 Civil Engineers • Surveyors • Water Resources Engineers • Water & Wastewater Engineers

THE CONSERVANCY - NEIGHBORHOOD 2A
 VILLAGE OF GILBERTS, ILLINOIS
 STREET LIGHTING AND SIGNAGE PLAN

PENDING APPROVAL - NOT FOR CONSTRUCTION



Manhard CONSULTING
 700 Spring Drive, Lombard, IL 60148
 708 Engineers • Surveyors • Water Resource Engineers • Wetland & Wetwater Engineers
 Civil Engineers • Sanitary • Environmental Scientists • Landscape Architects • Planners

THE CONSERVANCY - NEIGHBORHOOD 2A
VILLAGE OF GILBERTS, ILLINOIS
CONSTRUCTION DETAILS

DATE: 07/22/16
 SCALE: N.T.S.
 SHEET: 21 OF 23
 GDL.GIL.01

PENDING APPROVAL - NOT FOR CONSTRUCTION

