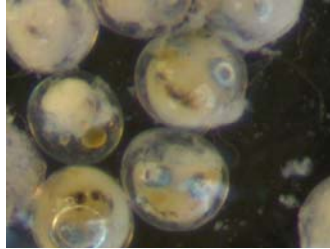


# NEAMAP

*Northeast Area Monitoring and Assessment Program*

## *Prey Species*

*2006-2012*



# Stenotomus chrysops

VIMSCODE: 0001

Common Name: Scup

Stomachs Processed (Full Workup Samples): 7,241

% Empty Stomachs or No/Improper Sample: 30%

bony fishes	cartilaginous fishes
crustaceans	other animals
molluscs	miscellaneous
worms	

Prey Species	COMMON	LATIN	COUNT	PERCENT
0708	unidentified material	unidentified material	1169	16.14
0775	unidentified polychaete	Polychaeta	1015	14.02
0636	four-eyed amphipods (Ampelisca spp.)	Ampelisca spp.	729	10.07
0841	unidentified amphipod	Amphipoda spp.	564	7.79
0507	common burrower amphipod	Leptocheirus plumulosus	463	6.39
0758	unidentified right-hand hermit crab	Pagurus spp.	307	4.24
0671	amphipod (Corophium spp.)	Corophium spp.	288	3.98
5039	unidentified clam	Bivalvia	247	3.41
0694	amphipod (Gammarus spp.)	Gammarus spp.	195	2.69
0604	sand shrimp	Crangon septemspinosa	189	2.61
5000	unidentified fish	Actinopterygii	144	1.99
7581	long-clawed hermit crab	Pagurus longicarpus	139	1.92
0673	unidentified crustacean	Crustacea	137	1.89
0103	bay anchovy	Anchoa mitchilli	117	1.62
5035	unidentified crab	Decapoda	103	1.42
5003	unidentified clam siphon	Bivalvia	101	1.39
0764	polychaete (Pherusa affinis)	Pherusa affinis	95	1.31
0574	unidentified mysid	Mysidae	93	1.28
0699	mysid	Neomysis americana	93	1.28
0798	polychaete (Terebellidae)	Terebellidae	90	1.24
0709	unidentified mollusc meat	Mollusca	85	1.17
0529	fish scales	fish scales	80	1.10
0738	red-eyed amphipod	Monoculodes edwardsi	72	0.99
0658	skeleton shrimp (Caprellidae)	Caprellidae spp	68	0.94
0884	unidentified drill or snail	Gastropoda	67	0.93
5012	crab parts	crab parts	65	0.90
0674	unidentified cumacean	Cumacea	60	0.83
0656	Atlantic rock crab	Cancer irroratus	56	0.77
0697	unidentified bloodworm	Glycera spp.	56	0.77
0667	trumpet worm	Pectinaria gouldi	54	0.75
0399	common anchovies	Anchoa spp.	48	0.66
0657	unidentified isopod	Isopoda spp.	47	0.65
5020	mound back isopod	Edotia triloba	45	0.62
1028	longfin inshore squid	Loligo pealeii	44	0.61
0705	shell	shell	43	0.59
0702	sand dollar	Echinarachnius parma	41	0.57
0498	unidentified bivalve	Bivalvia	40	0.55
0790	jackknife clams (razor clams)	Solenioidea	37	0.51
5032	animal tubes	animal tubes	36	0.50

bony fishes	cartilaginous fishes
crustaceans	other animals
molluscs	miscellaneous
worms	

Prey Species	COMMON	LATIN	COUNT	PERCENT
0668	bamboo worm	<i>Clymenella torquata</i>	36	0.50
0539	cumacean ( <i>Oxyurostylis smithi</i> )	<i>Oxyurostylis smithi</i>	35	0.48
5037	sand	sand	33	0.46
0617	acadian hermit crab	<i>Pagurus acadianus</i>	28	0.39
5001	unidentified shrimp	Decapoda	28	0.39
0995	unidentified animal	unidentified animal	28	0.39
0518	calanoid copepod	calanoid copepod	27	0.37
5016	unidentified rock crab	<i>Cancer</i> spp.	27	0.37
0629	unidentified worm	worm	27	0.37
0816	Atlantic jackknife clam	<i>Ensis directus</i>	26	0.36
0643	sea anemones	Actiniaria	21	0.29
0802	blue mussel	<i>Mytilus edulis</i>	19	0.26
0918	isopods ( <i>Edotia</i> )	<i>Edotia</i> spp.	18	0.25
0740	mysid ( <i>Americamysis bigelowi</i> )	<i>Mysidopsis bigelowi</i>	17	0.23
0624	olivepit porcelain crab	<i>Euceramus praelongus</i>	16	0.22
7582	flat-clawed hermit crab	<i>Pagurus pollicaris</i>	16	0.22
0623	shrimp ( <i>Acetes</i> spp.)	<i>Acetes</i> spp.	14	0.19
0703	unidentified hydroid	Cnidaria	14	0.19
0833	unidentified pea crab	<i>Pinnixa</i> spp.	13	0.18
0888	stout tagelus	<i>Tagelus plebeius</i>	13	0.18
0510	clam worm ( <i>Nereis</i> spp.)	<i>Nereis</i> spp.	13	0.18
1018	chameleon shrimp	<i>Praunus flexuosus</i>	12	0.17
5006	vegetation	Plantae	12	0.17
0495	lancelets	<i>Branchiostoma</i> spp.	12	0.17
0621	mantis shrimp	<i>Squilla empusa</i>	11	0.15
0820	clam ( <i>Macoma</i> spp.)	<i>Macoma</i> spp.	11	0.15
1009	skeleton shrimp ( <i>Caprella</i> spp.)	<i>Caprella</i> spp.	10	0.14
5011	unidentified shrimp zoea	Decapoda	10	0.14
5031	rock	rock	10	0.14
0547	tube pea crab	<i>Pinnixa chaetoptera</i>	9	0.12
0973	unidentified crab zoea	Decapoda	9	0.12
5026	unidentified spider crab	<i>Libinia</i> spp.	9	0.12
0508	isopod	<i>Ancinus depressus</i>	9	0.12
0585	mud	Miscellaneous	9	0.12
0881	slippersnails	<i>Crepidula</i> spp.	9	0.12
0892	worm tubes	worm tubes	9	0.12
1025	isopod ( <i>Politolana concharum</i> )	<i>Politolana concharum</i>	8	0.11
0682	polychaete ( <i>Drilonereis</i> spp.)	<i>Drilonereis</i> spp.	8	0.11
0023	searobins ( <i>Prionotus</i> spp.)	<i>Prionotus</i> spp.	7	0.10
0500	short-browed mud shrimp	<i>Gilvossius setimanus</i>	7	0.10
0595	roughneck shrimp	<i>Rimapenaeus constrictus</i>	7	0.10
0650	unidentified Asteroiid sea star	Asteriidae	7	0.10
0281	unidentified gobies	Gobiidae	6	0.08
0659	amphipod ( <i>Casco bigelowi</i> )	<i>Casco bigelowi</i>	6	0.08
0513	slender isopod	<i>Cyathura polita</i>	6	0.08
0755	unidentified brittle stars	Ophiuroidea	6	0.08
0579	<i>Erichthonius brasiliensis</i>	<i>Erichthonius brasiliensis</i>	5	0.07

bony fishes	cartilaginous fishes
crustaceans	other animals
molluscs	miscellaneous
worms	

Prey Species	COMMON	LATIN	COUNT	PERCENT
0545	blue crab megalopa	Callinectes spp.	5	0.07
0917	unidentified hermit crab	Paguroidea	5	0.07
0912	isopod (Idotea spp.)	Idotea spp.	5	0.07
0504	wood	Plantae	5	0.07
0594	unidentified mud crab	Xanthidae	4	0.06
0612	lady crab	Ovalipes ocellatus	4	0.06
0559	isopod (Sphaeroma quadridentatum)	Sphaeroma quadridentatum	4	0.06
0496	unidentified echinoderm	Echinodermata	4	0.06
0824	sea squirts (Molgula spp.)	Molgula spp.	4	0.06
0754	polychaete (Ophelia denticulata)	Ophelia denticulata	4	0.06
0005	Atlantic croaker	Micropogonias undulatus	3	0.04
0808	sessile barnacles	Sessilia	3	0.04
0960	unidentified mantis shrimp (Squilla)	Squilla spp.	3	0.04
0675	unidentified decapod (crabs, shrimp, lobsters)	Decapoda	3	0.04
1010	unidentified mud shrimp	Thalassinidea	3	0.04
0663	isopod (Chiridotea tuftsi)	Chiridotea tuftsi	3	0.04
5029	eelgrass	Zostera marina	3	0.04
0855	unidentified nudibranch	Nudibranchia	3	0.04
5036	unidentified mollusc	Mollusca	3	0.04
0651	unidentified sea stars	Asteroidea	3	0.04
0920	brittle star	Amphiplus abdita	3	0.04
0004	butterfish	Peprilus triacanthus	2	0.03
0534	amphipod (Microprotopus raneyi)	Microprotopus raneyi	2	0.03
0670	amphipod (Corophium crassicorne)	Corophium crassicorne	2	0.03
0509	copepod (Harpacticoid)	Harpacticoid copepod	2	0.03
0902	cumacean (Cyclaspis spp.)	Cyclaspis spp.	2	0.03
0552	smooth mud crab	Hexapanopeus angustifrons	2	0.03
0839	swimming crabs	Portunids	2	0.03
0684	isopod (Edotia acuta)	Edotia acuta	2	0.03
0017	Loligo squid	Loligo spp.	2	0.03
0661	unidentified cephalopoda	Cephalopoda	2	0.03
0840	purple sea urchin	Arbacia punctulata	2	0.03
0991	ants	Formicidae	2	0.03
0548	unidentified sponge	Porifera	2	0.03
0901	nematode	Nematoda	2	0.03
0944	polychaete (Piromis eruca)	Piromis eruca	2	0.03
0006	silver hake	Merluccius bilinearis	1	0.01
0057	southern kingfish	Menticirrhus americanus	1	0.01
0102	striped anchovy	Anchoa hepsetus	1	0.01
0219	Atlantic cutlassfish	Trichiurus lepturus	1	0.01
0236	smallmouth flounder	Etropus microstomus	1	0.01
0339	bigeye	Priacanthus arenatus	1	0.01
0535	amphipod (Cerapus tubularis)	Cerapus tubularis	1	0.01
0767	amphipod (Photis macrocoxa)	Photis macrocoxa	1	0.01
0768	amphipod (Phoxocephalus holbolli)	Phoxocephalus holbolli	1	0.01
0921	skeleton shrimp (Caprella penantis)	Caprella penantis	1	0.01
0923	skeleton shrimp (Paracaprella tenuis)	Paracaprella tenuis	1	0.01

bony fishes	cartilaginous fishes
crustaceans	other animals
molluscs	miscellaneous
worms	

Prey Species	COMMON	LATIN	COUNT	PERCENT
1008	amphipod (Haustoriidae)	Haustoriidae	1	0.01
1012	amphipod (Amphiporeia virginiana)	Amphiporeia virginiana	1	0.01
0525	unidentified tanaid	Tanaidacea	1	0.01
0555	unidentified copepod	Copepoda	1	0.01
0550	shrimp (Lucifer faxoni)	Lucifer faxoni	1	0.01
0601	eastern tube crab	Polyonyx gibbesi	1	0.01
0625	square-eyed mole crab	Lepidopa websteri	1	0.01
0653	burrowing shrimp	Axius serratus	1	0.01
0757	hairy hermit crab	Pagurus arcuatus	1	0.01
0864	Atlantic sand crab	Emerita talpoida	1	0.01
0871	red striped hermit crab	Phimochirus holthuisi	1	0.01
0876	unidentified slipper lobster	Scyllaridae	1	0.01
0570	sand isopod	Chiridotea almyra	1	0.01
0655	sea slater	Idotea balthica	1	0.01
0781	isopod (Ptilanthura tenuis)	Ptilanthura tenuis	1	0.01
1022	isopod (Nerocila acuminata)	Nerocila acuminata	1	0.01
0542	trash, plastic	plastic trash	1	0.01
0970	eggs	eggs	1	0.01
0706	sand tubes	sand tubes	1	0.01
0478	macro algae	macro algae	1	0.01
0957	plant seed	plant seed	1	0.01
0887	northern dwarf tellin	Tellina agilis	1	0.01
0964	Mitchell's macoma	Macoma mitchelli	1	0.01
1020	tagelus clams	Tagelus spp.	1	0.01
0773	seaboard marginella	Prunum roscidum	1	0.01
0800	moon snail	Polinices heros	1	0.01
0774	unidentified comb jelly	Ctenophora	1	0.01
0828	unidentified sea cucumbers	Holothuroidea	1	0.01
0847	keyhole urchin	Mellita quinquiesperforata	1	0.01
0505	unidentified insect	Insecta	1	0.01
0571	wasps, bees, ants	Hymenoptera	1	0.01
0958	moth flies, sand flies	Psychodidae	1	0.01
1014	mayflies	Ephemeroptera	1	0.01
0971	unidentified zooplankton	unidentified zooplankton	1	0.01
5007	sea squirt (Molgula manhattensis)	Molgula manhattensis	1	0.01
0638	worms (Ampharete arctica)	Ampharete arctica	1	0.01
0647	polychaete (Aricidea neosuecica)	Aricidea neosuecica	1	0.01
0935	flatworms	Turbellaria	1	0.01

# Centropristis striata

VIMSCODE: 0002

Common Name: Black Seabass

Stomachs Processed (Full Workup Samples): 1,722

% Empty Stomachs or No/Improper Sample: 21%

bony fishes	cartilaginous fishes
crustaceans	other animals
molluscs	miscellaneous
worms	

Prey Species	COMMON	LATIN	COUNT	PERCENT
0656	Atlantic rock crab	Cancer irroratus	529	30.72
0604	sand shrimp	Crangon septemspinosa	152	8.83
0103	bay anchovy	Anchoa mitchilli	141	8.19
0004	butterfish	Peprilus triacanthus	140	8.13
7582	flat-clawed hermit crab	Pagurus pollicaris	81	4.70
5000	unidentified fish	Actinopterygii	73	4.24
0758	unidentified right-hand hermit crab	Pagurus spp.	71	4.12
5035	unidentified crab	Decapoda	69	4.01
5012	crab parts	crab parts	67	3.89
0708	unidentified material	unidentified material	63	3.66
7581	long-clawed hermit crab	Pagurus longicarpus	61	3.54
0709	unidentified mollusc meat	Mollusca	51	2.96
5016	unidentified rock crab	Cancer spp.	46	2.67
0507	common burrower amphipod	Leptocheirus plumulosus	45	2.61
0775	unidentified polychaete	Polychaeta	45	2.61
0699	mysisid	Neomysis americana	41	2.38
1028	longfin inshore squid	Loligo pealeii	39	2.26
0574	unidentified mysid	Mysidae	38	2.21
0679	bristled longbeak	Dichelopandalus leptocerus	34	1.97
0617	acadian hermit crab	Pagurus acadianus	32	1.86
0697	unidentified bloodworm	Glycera spp.	30	1.74
5001	unidentified shrimp	Decapoda	29	1.68
5031	rock	rock	29	1.68
0001	scup	Stenotomus chrysops	27	1.57
0281	unidentified gobies	Gobiidae	26	1.51
0636	four-eyed amphipods (Ampelisca spp.)	Ampelisca spp.	26	1.51
1025	isopod (Politolana concharum)	Politolana concharum	26	1.51
0694	amphipod (Gammarus spp.)	Gammarus spp.	25	1.45
0671	amphipod (Corophium spp.)	Corophium spp.	24	1.39
0673	unidentified crustacean	Crustacea	23	1.34
0841	unidentified amphipod	Amphipoda spp.	22	1.28
0594	unidentified mud crab	Xanthidae	20	1.16
0740	mysisid (Americamysis bigelowi)	Mysidopsis bigelowi	14	0.81
5006	vegetation	Plantae	14	0.81
0595	roughneck shrimp	Rimapenaeus constrictus	13	0.75
0790	jackknife clams (razor clams)	Solenioidea	13	0.75
0645	sea mouse	Aphrodita hastata	13	0.75
0529	fish scales	fish scales	12	0.70
0884	unidentified drill or snail	Gastropoda	12	0.70

bony fishes	cartilaginous fishes
crustaceans	other animals
molluscs	miscellaneous
worms	

Prey Species	COMMON	LATIN	COUNT	PERCENT
5026	unidentified spider crab	Libinia spp.	11	0.64
5020	mound back isopod	Edotia triloba	11	0.64
0816	Atlantic jackknife clam	Ensis directus	11	0.64
0539	cumacean ( <i>Oxyurostylis smithi</i> )	<i>Oxyurostylis smithi</i>	10	0.58
0053	codlings	<i>Urophycis</i> spp.	9	0.52
0498	unidentified bivalve	<i>Bivalvia</i>	9	0.52
0102	striped anchovy	<i>Anchoa hepsetus</i>	8	0.46
0156	unidentified pipefishes	<i>Syngnathus</i> spp.	8	0.46
0621	mantis shrimp	<i>Squilla empusa</i>	8	0.46
0674	unidentified cumacean	Cumacea	8	0.46
0578	swimming crab ( <i>Portunus</i> spp.)	<i>Portunus</i> spp.	8	0.46
0600	jonah crab	<i>Cancer borealis</i>	8	0.46
0705	shell	shell	8	0.46
5032	animal tubes	animal tubes	8	0.46
0181	unidentified ocellate skates	<i>Raja</i> spp.	7	0.41
0725	Atlantic brief squid	<i>Lolliguncula brevis</i>	7	0.41
0764	polychaete ( <i>Pherusa affinis</i> )	<i>Pherusa affinis</i>	7	0.41
0552	smooth mud crab	<i>Hexapanopeus angustifrons</i>	6	0.35
0653	burrowing shrimp	<i>Axius serratus</i>	6	0.35
0657	unidentified isopod	<i>Isopoda</i> spp.	6	0.35
0995	unidentified animal	unidentified animal	6	0.35
0006	silver hake	<i>Merluccius bilinearis</i>	5	0.29
0129	lined seahorse	<i>Hippocampus erectus</i>	5	0.29
0917	unidentified hermit crab	Paguroidea	5	0.29
0685	isopod ( <i>Edotia montosa</i> )	<i>Edotia montosa</i>	5	0.29
5003	unidentified clam siphon	<i>Bivalvia</i>	5	0.29
5039	unidentified clam	<i>Bivalvia</i>	5	0.29
0002	black seabass	<i>Centropristis striata</i>	4	0.23
0015	red hake	<i>Urophycis chuss</i>	4	0.23
0070	spotted hake	<i>Urophycis regia</i>	4	0.23
0211	Atlantic moonfish	<i>Selene setapinnis</i>	4	0.23
0399	common anchovies	<i>Anchoa</i> spp.	4	0.23
0738	red-eyed amphipod	<i>Monoculodes edwardsi</i>	4	0.23
0612	lady crab	<i>Ovalipes ocellatus</i>	4	0.23
0839	swimming crabs	Portunids	4	0.23
5942	Atlantic mud crab	<i>Panopeus herbstii</i>	4	0.23
5037	sand	sand	4	0.23
0091	Atlantic surfclam	<i>Spisula solidissima</i>	4	0.23
0800	moon snail	<i>Polinices heros</i>	4	0.23
0703	unidentified hydroid	Cnidaria	4	0.23
0754	polychaete ( <i>Ophelia denticulata</i> )	<i>Ophelia denticulata</i>	4	0.23
0023	searobins ( <i>Prionotus</i> spp.)	<i>Prionotus</i> spp.	3	0.17
0020	American lobster	<i>Homarus americanus</i>	3	0.17
0500	short-browed mud shrimp	<i>Gilvossius setimanus</i>	3	0.17
0593	six spine spider crab	<i>Libinia dubia</i>	3	0.17
0605	common spider crab	<i>Libinia emarginata</i>	3	0.17
0624	olivepit porcelain crab	<i>Euceramus praelongus</i>	3	0.17

bony fishes	cartilaginous fishes
crustaceans	other animals
molluscs	miscellaneous
worms	

Prey Species	COMMON	LATIN	COUNT	PERCENT
0170	clearnose skate	Raja eglanteria	2	0.12
0658	skeleton shrimp (Caprellidae)	Caprellidae spp	2	0.12
1008	amphipod (Haustoriidae)	Haustoriidae	2	0.12
0547	tube pea crab	Pinnixa chaetoptera	2	0.12
0590	flat-browed mud shrimp	Upogebia affinis	2	0.12
0607	iridescent swimming crab	Portunus gibbesii	2	0.12
0614	blue crab, sex unknown	Callinectes sapidus	2	0.12
0508	isopod	Ancinus depressus	2	0.12
0559	isopod (Sphaeroma quadridentatum)	Sphaeroma quadridentatum	2	0.12
0478	macro algae	macro algae	2	0.12
0888	stout tagelus	Tagelus plebeius	2	0.12
0648	sessile tunicates	Ascidacea	2	0.12
0005	Atlantic croaker	Micropogonias undulatus	1	0.06
0007	weakfish	Cynoscion regalis	1	0.06
0009	bluefish	Pomatomus saltatrix	1	0.06
0085	triggerfishes	Balistes spp.	1	0.06
0197	fourbeard rockling	Enchelyopus cimbrius	1	0.06
0218	cunner	Tautoglabrus adspersus	1	0.06
0236	smallmouth flounder	Etropus microstomus	1	0.06
0239	gray triggerfish	Balistes capriscus	1	0.06
0471	common puffers	Sphoeroides spp.	1	0.06
0491	sand lances	Ammodytes spp.	1	0.06
5002	unidentified flatfish	Pleuronectiformes	1	0.06
0579	Erichthonius brasiliensis	Erichthonius brasiliensis	1	0.06
5021	slender tube builder	Corophium lacustre	1	0.06
0808	sessile barnacles	Sessilia	1	0.06
1018	chameleon shrimp	Praunus flexuosus	1	0.06
0675	unidentified decapod (crabs, shrimp, lobsters)	Decapoda	1	0.06
0870	mottled purse crab	Persephona mediterranea	1	0.06
0875	sargassum swimming crab	Portunus sayi	1	0.06
1010	unidentified mud shrimp	Thalassinidea	1	0.06
0912	isopod (Idotea spp.)	Idotea spp.	1	0.06
0894	coal	coal	1	0.06
0957	plant seed	plant seed	1	0.06
5029	eelgrass	Zostera marina	1	0.06
0821	quahog clam	Mercenaria mercenaria	1	0.06
0017	Loligo squid	Loligo spp.	1	0.06
0742	New England dog whelk	Nassarius trivittatus	1	0.06
0939	limpet nudibranch	Doridella obscura	1	0.06
5027	dove snails (Anachis spp.)	Anachis spp.	1	0.06
5028	barrel bubble	Acteocina canaliculata	1	0.06
0553	sea cucumber	Thyone briareus	1	0.06
0702	sand dollar	Echinarachnius parma	1	0.06
0522	biting midge	Ceratopogonidae	1	0.06
0824	sea squirts (Molgula spp.)	Molgula spp.	1	0.06
0548	unidentified sponge	Porifera	1	0.06
5036	unidentified mollusc	Mollusca	1	0.06



bony fishes	cartilaginous fishes
crustaceans	other animals
molluscs	miscellaneous
worms	

Prey Species	COMMON	LATIN	COUNT	PERCENT
0629	unidentified worm	worm	1	0.06
0892	worm tubes	worm tubes	1	0.06
5010	clam worm ( <i>Neanthes succinea</i> )	<i>Neanthes succinea</i>	1	0.06

# *Paralichthys dentatus*

VIMSCODE: 0003

Common Name: Summer Flounder

Stomachs Processed (Full Workup Samples): 3,972

% Empty Stomachs or No/Improper Sample: 23%

bony fishes	cartilaginous fishes
crustaceans	other animals
molluscs	miscellaneous
worms	

Prey Species	COMMON	LATIN	COUNT	PERCENT
0103	bay anchovy	Anchoa mitchilli	616	15.51
5000	unidentified fish	Actinopterygii	586	14.75
0604	sand shrimp	Crangon septemspinosa	419	10.55
0699	mysid	Neomysis americana	317	7.98
0656	Atlantic rock crab	Cancer irroratus	279	7.02
0001	scup	Stenotomus chrysops	201	5.06
1028	longfin inshore squid	Loligo pealeii	187	4.71
0574	unidentified mysid	Mysidae	157	3.95
0612	lady crab	Ovalipes ocellatus	157	3.95
0004	butterfish	Peprilus triacanthus	146	3.68
0740	mysid (Americamysis bigelowi)	Mysidopsis bigelowi	109	2.74
0053	codlings	Urophycis spp.	99	2.49
0491	sand lances	Ammodytes spp.	94	2.37
0007	weakfish	Cynoscion regalis	68	1.71
0005	Atlantic croaker	Micropogonias undulatus	64	1.61
0507	common burrower amphipod	Leptocheirus plumulosus	48	1.21
0006	silver hake	Merluccius bilinearis	47	1.18
5001	unidentified shrimp	Decapoda	44	1.11
0708	unidentified material	unidentified material	40	1.01
0399	common anchovies	Anchoa spp.	37	0.93
0595	roughneck shrimp	Rimapenaeus constrictus	37	0.93
5016	unidentified rock crab	Cancer spp.	37	0.93
0705	shell	shell	34	0.86
0621	mantis shrimp	Squilla empusa	33	0.83
5035	unidentified crab	Decapoda	31	0.78
0070	spotted hake	Urophycis regia	30	0.76
0023	searobins (Prionotus spp.)	Prionotus spp.	25	0.63
5031	rock	rock	23	0.58
0236	smallmouth flounder	Etropus microstomus	22	0.55
0002	black seabass	Centropristis striata	19	0.48
0102	striped anchovy	Anchoa hepsetus	17	0.43
0673	unidentified crustacean	Crustacea	16	0.40
0758	unidentified right-hand hermit crab	Pagurus spp.	16	0.40
0076	round herring	Etrumeus teres	15	0.38
5002	unidentified flatfish	Pleuronectiformes	15	0.38
0013	kingfish (Menticirrhus spp.)	Menticirrhus spp.	14	0.35
0963	unidentified croaker/drum	Sciaenidae	14	0.35
0636	four-eyed crustaceans (Ampelisca spp.)	Ampelisca spp.	14	0.35
5032	animal tubes	animal tubes	14	0.35

bony fishes	cartilaginous fishes
crustaceans	other animals
molluscs	miscellaneous
worms	

Prey Species	COMMON	LATIN	COUNT	PERCENT
5039	unidentified clam	Bivalvia	14	0.35
0015	red hake	Urophycis chuss	13	0.33
0916	unidentified herring	Clupeidae	13	0.33
0679	bristled longbeak	Dichelopandalus leptocerus	13	0.33
0033	spot	Leiostomus xanthurus	12	0.30
0529	fish scales	fish scales	12	0.30
0009	bluefish	Pomatomus saltatrix	10	0.25
0471	common puffers	Sphoeroides spp.	10	0.25
0694	amphipod (Gammarus spp.)	Gammarus spp.	10	0.25
5012	crab parts	crab parts	10	0.25
0547	tube pea crab	Pinnixa chaetoptera	9	0.23
0623	shrimp (Acetes spp.)	Acetes spp.	9	0.23
5006	vegetation	Plantae	9	0.23
0884	unidentified drill or snail	Gastropoda	9	0.23
0775	unidentified polychaete	Polychaeta	8	0.20
0056	northern kingfish	Menticirrhus saxatilis	7	0.18
0833	unidentified pea crab	Pinnixa spp.	7	0.18
0875	sargassum swimming crab	Portunus sayi	7	0.18
0892	worm tubes	worm tubes	7	0.18
0071	northern searobin	Prionotus carolinus	6	0.15
0213	silver perch	Bairdiella chrysoura	6	0.15
7581	long-clawed hermit crab	Pagurus longicarpus	6	0.15
0901	nematode	Nematoda	6	0.15
0709	unidentified mollusc meat	Mollusca	5	0.13
0029	Atlantic herring	Clupea harengus	4	0.10
0072	striped searobin	Prionotus evolans	4	0.10
0156	unidentified pipefishes	Syngnathus spp.	4	0.10
0671	amphipod (Corophium spp.)	Corophium spp.	4	0.10
0738	red-eyed amphipod	Monoculodes edwardsi	4	0.10
0504	wood	Plantae	4	0.10
0498	unidentified bivalve	Bivalvia	4	0.10
0790	jackknife clams (razor clams)	Solenioidea	4	0.10
0802	blue mussel	Mytilus edulis	4	0.10
0057	southern kingfish	Menticirrhus americanus	3	0.08
0937	silver anchovy	Engraulis eurystole	3	0.08
0017	Loligo squid	Loligo spp.	3	0.08
0725	Atlantic brief squid	Lolliguncula brevis	3	0.08
0742	New England dog whelk	Nassarius trivittatus	3	0.08
0995	unidentified animal	unidentified animal	3	0.08
0702	sand dollar	Echinarachnius parma	3	0.08
0703	unidentified hydroid	Cnidaria	3	0.08
0027	blueback herring	Alosa aestivalis	2	0.05
0189	inshore lizardfish	Synodus foetens	2	0.05
0214	banded drum	Larimus fasciatus	2	0.05
0260	rock seabass	Centropristis philadelphica	2	0.05
0281	unidentified gobies	Gobiidae	2	0.05
0658	skeleton shrimp (Caprellidae)	Caprellidae spp	2	0.05

bony fishes	cartilaginous fishes
crustaceans	other animals
molluscs	miscellaneous
worms	

Prey Species	COMMON	LATIN	COUNT	PERCENT
0578	swimming crab (Portunus spp.)	Portunus spp.	2	0.05
0600	jonah crab	Cancer borealis	2	0.05
0605	common spider crab	Libinia emarginata	2	0.05
1025	isopod (Politolana concharum)	Politolana concharum	2	0.05
0585	mud	Miscellaneous	2	0.05
5037	sand	sand	2	0.05
0478	macro algae	macro algae	2	0.05
0816	Atlantic jackknife clam	Ensis directus	2	0.05
0938	common Atlantic abra	Abra aequalis	2	0.05
0661	unidentified cephalopoda	Cephalopoda	2	0.05
0495	lancelets	Branchiostoma spp.	2	0.05
0669	polychaete (Clymenella zonalis)	Clymenella zonalis	2	0.05
0028	hickory shad	Alosa mediocris	1	0.03
0044	winter flounder	Pseudopleuronectes americanus	1	0.03
0058	spotted seatrout	Cynoscion nebulosus	1	0.03
0063	windowpane	Scophthalmus aquosus	1	0.03
0139	green goby	Microgobius thalassinus	1	0.03
0205	round scad	Decapterus punctatus	1	0.03
0211	Atlantic moonfish	Selene setapinnis	1	0.03
0216	pinfish	Lagodon rhomboides	1	0.03
0218	cunner	Tautogolabrus adspersus	1	0.03
0230	northern sennet	Sphyræna borealis	1	0.03
0437	blotched cusk-eel	Ophidion grayi	1	0.03
0518	calanoid copepod	calanoid copepod	1	0.03
0539	cumacean (Oxyurostylis smithi)	Oxyurostylis smithi	1	0.03
0952	berg-salmon gill worm	Lernaenicus radiatus	1	0.03
0960	unidentified mantis shrimp (Squilla)	Squilla spp.	1	0.03
5038	unidentified copepod (Copepoda)	Copepoda	1	0.03
0841	unidentified amphipod	Amphipoda spp.	1	0.03
1009	skeleton shrimp (Caprella spp.)	Caprella spp.	1	0.03
1012	amphipod (Amphiporeia virginiana)	Amphiporeia virginiana	1	0.03
0545	blue crab megalopa	Callinectes spp.	1	0.03
0550	shrimp (Lucifer faxoni)	Lucifer faxoni	1	0.03
0596	pink shrimp	Farfantepenaeus duorarum	1	0.03
0607	iridescent swimming crab	Portunus gibbesii	1	0.03
0611	coarse-hand lady crab	Ovalipes stephensoni	1	0.03
0617	acadian hermit crab	Pagurus acadianus	1	0.03
0620	grass shrimp	Palaemonetes spp.	1	0.03
0653	burrowing shrimp	Axius serratus	1	0.03
0839	swimming crabs	Portunids	1	0.03
0917	unidentified hermit crab	Paguroidea	1	0.03
5023	pea crab (Pinnixa cylindrica)	Pinnixa cylindrica	1	0.03
5026	unidentified spider crab	Libinia spp.	1	0.03
7582	flat-clawed hermit crab	Pagurus pollicaris	1	0.03
0657	unidentified isopod	Isopoda spp.	1	0.03
0959	lazy fish lice	Argulus spp.	1	0.03
5020	mound back isopod	Edotia triloba	1	0.03

bony fishes	cartilaginous fishes
crustaceans	other animals
molluscs	miscellaneous
worms	

Prey Species	COMMON	LATIN	COUNT	PERCENT
0580	leaf	Plantae	1	0.03
5005	detritus	detritus	1	0.03
0821	quahog clam	<i>Mercenaria mercenaria</i>	1	0.03
0704	shark eye moon snail	<i>Polinices duplicatus</i>	1	0.03
0800	moon snail	<i>Polinices heros</i>	1	0.03
5028	barrel bubble	<i>Acteocina canaliculata</i>	1	0.03
0651	unidentified sea stars	Asteroidea	1	0.03
0798	polychaete (Terebellidae)	Terebellidae	1	0.03
5010	clam worm ( <i>Neanthes succinea</i> )	<i>Neanthes succinea</i>	1	0.03

# *Micropogonias undulatus*

VIMSCODE: 0005

Common Name: Atlantic Croaker

Stomachs Processed (Full Workup Samples): 2,382

% Empty Stomachs or No/Improper Sample: 14%

bony fishes	cartilaginous fishes
crustaceans	other animals
molluscs	miscellaneous
worms	

Prey Species	COMMON	LATIN	COUNT	PERCENT
0775	unidentified polychaete	Polychaeta	393	16.50
0708	unidentified material	unidentified material	323	13.56
0636	four-eyed amphipods ( <i>Ampelisca</i> spp.)	<i>Ampelisca</i> spp.	206	8.65
0816	Atlantic jackknife clam	<i>Ensis directus</i>	129	5.42
0103	bay anchovy	<i>Anchoa mitchilli</i>	128	5.37
0574	unidentified mysid	Mysidae	121	5.08
0604	sand shrimp	<i>Crangon septemspinosa</i>	98	4.11
0697	unidentified bloodworm	<i>Glycera</i> spp.	96	4.03
5039	unidentified clam	Bivalvia	91	3.82
0699	mysid	<i>Neomysis americana</i>	89	3.74
0709	unidentified mollusc meat	Mollusca	82	3.44
5037	sand	sand	76	3.19
0529	fish scales	fish scales	71	2.98
5000	unidentified fish	Actinopterygii	67	2.81
0790	jackknife clams (razor clams)	Solenioidea	62	2.60
0758	unidentified right-hand hermit crab	<i>Pagurus</i> spp.	60	2.52
0673	unidentified crustacean	Crustacea	52	2.18
0841	unidentified amphipod	Amphipoda spp.	48	2.02
5003	unidentified clam siphon	Bivalvia	37	1.55
5035	unidentified crab	Decapoda	35	1.47
7581	long-clawed hermit crab	<i>Pagurus longicarpus</i>	28	1.18
0702	sand dollar	<i>Echinarachnius parma</i>	22	0.92
5001	unidentified shrimp	Decapoda	21	0.88
0995	unidentified animal	unidentified animal	19	0.80
0495	lancelets	Branchiostoma spp.	19	0.80
5012	crab parts	crab parts	18	0.76
0764	polychaete ( <i>Pherusa affinis</i> )	<i>Pherusa affinis</i>	18	0.76
7582	flat-clawed hermit crab	<i>Pagurus pollicaris</i>	17	0.71
0705	shell	shell	17	0.71
5032	animal tubes	animal tubes	17	0.71
0498	unidentified bivalve	Bivalvia	17	0.71
0671	amphipod ( <i>Corophium</i> spp.)	<i>Corophium</i> spp.	14	0.59
0740	mysid ( <i>Americamysis bigelowi</i> )	<i>Mysidopsis bigelowi</i>	12	0.50
0656	Atlantic rock crab	<i>Cancer irroratus</i>	11	0.46
0884	unidentified drill or snail	Gastropoda	11	0.46
0621	mantis shrimp	<i>Squilla empusa</i>	10	0.42
0754	polychaete ( <i>Ophelia denticulata</i> )	<i>Ophelia denticulata</i>	10	0.42
0918	isopods ( <i>Edotia</i> )	<i>Edotia</i> spp.	9	0.38
5020	mound back isopod	<i>Edotia triloba</i>	9	0.38

bony fishes	cartilaginous fishes
crustaceans	other animals
molluscs	miscellaneous
worms	

Prey Species	COMMON	LATIN	COUNT	PERCENT
1025	isopod ( <i>Politolana concharum</i> )	<i>Politolana concharum</i>	8	0.34
0491	sand lances	<i>Ammodytes</i> spp.	7	0.29
0500	short-browed mud shrimp	<i>Gilvossius setimanus</i>	7	0.29
0508	isopod	<i>Ancinus depressus</i>	7	0.29
0920	brittle star	<i>Amphioplus abdita</i>	7	0.29
0798	polychaete ( <i>Terebellidae</i> )	<i>Terebellidae</i>	7	0.29
0682	polychaete ( <i>Drilonereis</i> spp.)	<i>Drilonereis</i> spp.	7	0.29
0668	bamboo worm	<i>Clymenella torquata</i>	7	0.29
0833	unidentified pea crab	<i>Pinnixa</i> spp.	6	0.25
5031	rock	rock	6	0.25
0585	mud	Miscellaneous	6	0.25
5006	vegetation	Plantae	6	0.25
0281	unidentified gobies	<i>Gobiidae</i>	5	0.21
0518	calanoid copepod	calanoid copepod	5	0.21
5016	unidentified rock crab	<i>Cancer</i> spp.	5	0.21
0590	flat-browed mud shrimp	<i>Upogebia affinis</i>	5	0.21
0802	blue mussel	<i>Mytilus edulis</i>	5	0.21
0703	unidentified hydroid	Cnidaria	5	0.21
0667	trumpet worm	<i>Pectinaria gouldi</i>	5	0.21
0399	common anchovies	<i>Anchoa</i> spp.	4	0.17
0674	unidentified cumacean	Cumacea	4	0.17
0933	unidentified ghost shrimps	<i>Callinassidae</i>	4	0.17
0657	unidentified isopod	<i>Isopoda</i> spp.	4	0.17
0742	New England dog whelk	<i>Nassarius trivittatus</i>	4	0.17
0800	moon snail	<i>Polinices heros</i>	4	0.17
0102	striped anchovy	<i>Anchoa hepsetus</i>	3	0.13
0236	smallmouth flounder	<i>Etropus microstomus</i>	3	0.13
0004	butterfish	<i>Peprilus triacanthus</i>	3	0.13
1008	amphipod ( <i>Haustoriidae</i> )	<i>Haustoriidae</i>	3	0.13
0547	tube pea crab	<i>Pinnixa chaetoptera</i>	3	0.13
0594	unidentified mud crab	<i>Xanthidae</i>	3	0.13
0504	wood	Plantae	3	0.13
5005	detritus	detritus	3	0.13
1028	longfin inshore squid	<i>Loligo pealeii</i>	3	0.13
0496	unidentified echinoderm	Echinodermata	3	0.13
0629	unidentified worm	worm	3	0.13
0892	worm tubes	worm tubes	3	0.13
0694	amphipod ( <i>Gammarus</i> spp.)	<i>Gammarus</i> spp.	2	0.08
0507	common burrower amphipod	<i>Leptocheirus plumulosus</i>	2	0.08
1010	unidentified mud shrimp	Thalassinidea	2	0.08
0624	olivepit porcelain crab	<i>Euceramus praelongus</i>	2	0.08
0612	lady crab	<i>Ovalipes ocellatus</i>	2	0.08
0573	estuarine long-eyed shrimp	<i>Ogyrides alphaerostris</i>	2	0.08
0828	unidentified sea cucumbers	Holothuroidea	2	0.08
0852	sea pansy	<i>Renilla reniformis</i>	2	0.08
5007	sea squirt ( <i>Molgula manhattensis</i> )	<i>Molgula manhattensis</i>	2	0.08
0824	sea squirts ( <i>Molgula</i> spp.)	<i>Molgula</i> spp.	2	0.08

bony fishes	cartilaginous fishes
crustaceans	other animals
molluscs	miscellaneous
worms	

Prey Species	COMMON	LATIN	COUNT	PERCENT
0648	sessile tunicates	Asciacea	2	0.08
0916	unidentified herring	Clupeidae	1	0.04
5002	unidentified flatfish	Pleuronectiformes	1	0.04
0023	searobins (Prionotus spp.)	Prionotus spp.	1	0.04
0037	Atlantic menhaden	Brevoortia tyrannus	1	0.04
0157	rock gunnel	Pholis gunnellus	1	0.04
0960	unidentified mantis shrimp (Squillidae)	Squilla spp.	1	0.04
0795	tanaiidacean (Tanaissus lilljeborgi)	Tanaissus lilljeborgi	1	0.04
0917	unidentified hermit crab	Paguroidea	1	0.04
5026	unidentified spider crab	Libinia spp.	1	0.04
0620	grass shrimp	Palaemonetes spp.	1	0.04
0552	smooth mud crab	Hexapanopeus angustifrons	1	0.04
0578	swimming crab (Portunus spp.)	Portunus spp.	1	0.04
0623	shrimp (Acetes spp.)	Acetes spp.	1	0.04
0545	blue crab megalopa	Callinectes spp.	1	0.04
0925	Erichsonella attenuata	Erichsonella attenuata	1	0.04
0559	isopod (Sphaeroma quadridentatum)	Sphaeroma quadridentatum	1	0.04
0513	slender isopod	Cyathura polita	1	0.04
0526	isopod (Chiridotea spp.)	Chiridotea spp.	1	0.04
0663	isopod (Chiridotea tuftsi)	Chiridotea tuftsi	1	0.04
0542	trash, plastic	plastic trash	1	0.04
0478	macro algae	macro algae	1	0.04
0888	stout tagelus	Tagelus plebeius	1	0.04
0885	false angel wing	Petricolaria pholadiformes	1	0.04
0882	dwarf surf clam	Mulinia lateralis	1	0.04
0821	quahog clam	Mercenaria mercenaria	1	0.04
0855	unidentified nudibranch	Nudibranchia	1	0.04
0829	channeled whelk	Busycotypus canaliculatus	1	0.04
0881	slippersnails	Crepidula spp.	1	0.04
5015	interrupted turbonilla	Turbonilla interrupta	1	0.04
5025	lunar dove snail	Mitrella lunata	1	0.04
0563	snails (Hydrobia spp.)	Hydrobia spp.	1	0.04
5027	dove snails (Anachis spp.)	Anachis spp.	1	0.04
0806	solitary bubble	Haminoea solitaria	1	0.04
5036	unidentified mollusc	Mollusca	1	0.04
5033	unidentified meat	unidentified meat	1	0.04
0825	bryozoans/dead man fingers	Alcyonidium spp.	1	0.04
0840	purple sea urchin	Arbacia punctulata	1	0.04
0651	unidentified sea stars	Asteroidea	1	0.04
0755	unidentified brittle stars	Ophiuroidea	1	0.04
5029	eelgrass	Zostera marina	1	0.04
0987	capitellid worm	Heteromastus filiformis	1	0.04
5010	clam worm (Neanthes succinea)	Neanthes succinea	1	0.04
0510	clam worm (Nereis spp.)	Nereis spp.	1	0.04
0532	unidentified oligochaete	Oligochaeta	1	0.04
0632	Ophelid worm (Ophelina aulogaster)	Ophelina aulogaster	1	0.04
0777	polychaete (Praxillella spp.)	Praxillella spp.	1	0.04



# Merluccius bilinearis

VIMSCODE: 0006

Common Name: Silver Hake

Stomachs Processed (Full Workup Samples): 3,375

% Empty Stomachs or No/Improper Sample: 21%

bony fishes	cartilaginous fishes
crustaceans	other animals
molluscs	miscellaneous
worms	

Prey Species	COMMON	LATIN	COUNT	PERCENT
0604	sand shrimp	Crangon septemspinosa	1073	31.79
5000	unidentified fish	Actinopterygii	360	10.67
0636	four-eyed amphipods (Ampelisca spp.)	Ampelisca spp.	277	8.21
0103	bay anchovy	Anchoa mitchilli	236	6.99
0699	mysid	Neomysis americana	150	4.44
0507	common burrower amphipod	Leptocheirus plumulosus	110	3.26
0574	unidentified mysid	Mysidae	84	2.49
0738	red-eyed amphipod	Monoculodes edwardsi	73	2.16
0841	unidentified amphipod	Amphipoda spp.	71	2.10
0671	amphipod (Corophium spp.)	Corophium spp.	53	1.57
0399	common anchovies	Anchoa spp.	43	1.27
0708	unidentified material	unidentified material	42	1.24
0679	bristled longbeak	Dichelopandalus leptocerus	41	1.21
5001	unidentified shrimp	Decapoda	37	1.10
0674	unidentified cumacean	Cumacea	34	1.01
0673	unidentified crustacean	Crustacea	31	0.92
0539	cumacean (Oxyurostylis smithi)	Oxyurostylis smithi	26	0.77
0694	amphipod (Gammarus spp.)	Gammarus spp.	20	0.59
0006	silver hake	Merluccius bilinearis	19	0.56
0053	codlings	Urophycis spp.	19	0.56
0491	sand lances	Ammodytes spp.	18	0.53
1028	longfin inshore squid	Loligo pealeii	15	0.44
0916	unidentified herring	Clupeidae	14	0.41
0004	butterfish	Peprilus triacanthus	9	0.27
0595	roughneck shrimp	Rimapenaeus constrictus	9	0.27
0775	unidentified polychaete	Polychaeta	9	0.27
0918	isopods (Edotia)	Edotia spp.	7	0.21
0070	spotted hake	Urophycis regia	6	0.18
0758	unidentified right-hand hermit crab	Pagurus spp.	6	0.18
5020	mound back isopod	Edotia triloba	6	0.18
0518	calanoid copepod	calanoid copepod	4	0.12
0740	mysid (Americamysis bigelowi)	Mysidopsis bigelowi	4	0.12
0995	unidentified animal	unidentified animal	4	0.12
0002	black seabass	Centropristis striata	3	0.09
0043	Atlantic mackerel	Scomber scombrus	3	0.09
0705	shell	shell	3	0.09
5032	animal tubes	animal tubes	3	0.09
0901	nematode	Nematoda	3	0.09
0001	scup	Stenotomus chrysops	2	0.06

bony fishes	cartilaginous fishes
crustaceans	other animals
molluscs	miscellaneous
worms	

Prey Species	COMMON	LATIN	COUNT	PERCENT
0029	Atlantic herring	Clupea harengus	2	0.06
0102	striped anchovy	Anchoa hepsetus	2	0.06
0476	seabasses	Anthias spp.	2	0.06
0709	unidentified mollusc meat	Mollusca	2	0.06
0005	Atlantic croaker	Micropogonias undulatus	1	0.03
0012	white hake	Urophycis tenuis	1	0.03
0015	red hake	Urophycis chuss	1	0.03
0026	alewife	Alosa pseudoharengus	1	0.03
0027	blueback herring	Alosa aestivalis	1	0.03
0033	spot	Leiostomus xanthurus	1	0.03
0076	round herring	Etrumeus teres	1	0.03
0217	spotfin butterflyfish	Chaetodon ocellatus	1	0.03
0339	bigeye	Priacanthus arenatus	1	0.03
0529	fish scales	fish scales	1	0.03
5002	unidentified flatfish	Pleuronectiformes	1	0.03
0630	skeleton shrimp (Aeginina longicornis)	Aeginina longicornis	1	0.03
0658	skeleton shrimp (Caprellidae)	Caprellidae spp	1	0.03
0739	amphipod (Monoculodes spp.)	Monoculodes spp.	1	0.03
0607	iridescent swimming crab	Portunus gibbesii	1	0.03
5012	crab parts	crab parts	1	0.03
0508	isopod	Ancinus depressus	1	0.03
0683	isopod (Livoneca redmanii)	Livoneca redmanii	1	0.03
0959	lazy fish lice	Argulus spp.	1	0.03
5037	sand	sand	1	0.03
0807	horse mussel	Modiolus modiolus	1	0.03
0816	Atlantic jackknife clam	Ensis directus	1	0.03
5039	unidentified clam	Bivalvia	1	0.03
0603	horseshoe crab	Limulus polyphemus	1	0.03
0505	unidentified insect	Insecta	1	0.03
0571	wasps, bees, ants	Hymenoptera	1	0.03
5006	vegetation	Plantae	1	0.03
5029	eelgrass	Zostera marina	1	0.03
0629	unidentified worm	worm	1	0.03
0669	polychaete (Clymenella zonalis)	Clymenella zonalis	1	0.03
0731	polychaete (Maldanidae)	Maldanidae	1	0.03
0754	polychaete (Ophelia denticulata)	Ophelia denticulata	1	0.03

# Cynoscion regalis

VIMSCODE: 0007

Common Name: Weakfish

Stomachs Processed (Full Workup Samples): 4,723

% Empty Stomachs or No/Improper Sample: 14%

bony fishes	cartilaginous fishes
crustaceans	other animals
molluscs	miscellaneous
worms	

Prey Species	COMMON	LATIN	COUNT	PERCENT
0103	bay anchovy	Anchoa mitchilli	998	21.13
5000	unidentified fish	Actinopterygii	738	15.63
0574	unidentified mysid	Mysidae	703	14.88
0604	sand shrimp	Crangon septemspinosa	596	12.62
0699	mysid	Neomysis americana	580	12.28
0740	mysid (Americamysis bigelowi)	Mysidopsis bigelowi	129	2.73
0708	unidentified material	unidentified material	110	2.33
0399	common anchovies	Anchoa spp.	104	2.20
0529	fish scales	fish scales	99	2.10
5001	unidentified shrimp	Decapoda	96	2.03
0518	calanoid copepod	calanoid copepod	77	1.63
0636	four-eyed amphipods (Ampelisca spp.)	Ampelisca spp.	70	1.48
0102	striped anchovy	Anchoa hepsetus	61	1.29
0673	unidentified crustacean	Crustacea	56	1.19
1028	longfin inshore squid	Loligo pealeii	55	1.16
0545	blue crab megalopa	Callinectes spp.	43	0.91
0007	weakfish	Cynoscion regalis	38	0.80
0738	red-eyed amphipod	Monoculodes edwardsi	35	0.74
0001	scup	Stenotomus chrysops	31	0.66
0623	shrimp (Acetes spp.)	Acetes spp.	31	0.66
0004	butterfish	Peprilus triacanthus	28	0.59
0595	roughneck shrimp	Rimapenaeus constrictus	23	0.49
0037	Atlantic menhaden	Brevoortia tyrannus	22	0.47
0841	unidentified amphipod	Amphipoda spp.	22	0.47
5006	vegetation	Plantae	22	0.47
5032	animal tubes	animal tubes	20	0.42
0053	codlings	Urophycis spp.	19	0.40
0694	amphipod (Gammarus spp.)	Gammarus spp.	18	0.38
5020	mound back isopod	Edotia triloba	18	0.38
0952	berg-salmon gill worm	Lernaenicus radiatus	16	0.34
0491	sand lances	Ammodytes spp.	15	0.32
0657	unidentified isopod	Isopoda spp.	15	0.32
0918	isopods (Edotia)	Edotia spp.	15	0.32
0775	unidentified polychaete	Polychaeta	14	0.30
0833	unidentified pea crab	Pinnixa spp.	13	0.28
0697	unidentified bloodworm	Glycera spp.	12	0.25
0005	Atlantic croaker	Micropogonias undulatus	11	0.23
0758	unidentified right-hand hermit crab	Pagurus spp.	11	0.23

bony fishes	cartilaginous fishes
crustaceans	other animals
molluscs	miscellaneous
worms	

Prey Species	COMMON	LATIN	COUNT	PERCENT
0006	silver hake	Merluccius bilinearis	10	0.21
0973	unidentified crab zoea	Decapoda	10	0.21
0612	lady crab	Ovalipes ocellatus	9	0.19
0213	silver perch	Bairdiella chrysoura	8	0.17
0550	shrimp (Lucifer faxoni)	Lucifer faxoni	8	0.17
0671	amphipod (Corophium spp.)	Corophium spp.	7	0.15
0790	jackknife clams (razor clams)	Solenioidea	7	0.15
0816	Atlantic jackknife clam	Ensis directus	7	0.15
0023	searobins (Prionotus spp.)	Prionotus spp.	6	0.13
0937	silver anchovy	Engraulis eurystole	6	0.13
0963	unidentified croaker/drum	Sciaenidae	6	0.13
0507	common burrower amphipod	Leptocheirus plumulosus	6	0.13
0547	tube pea crab	Pinnixa chaetoptera	6	0.13
0033	spot	Leiostomus xanthurus	5	0.11
0070	spotted hake	Urophycis regia	5	0.11
1018	chameleon shrimp	Praunus flexuosus	5	0.11
0009	bluefish	Pomatomus saltatrix	4	0.08
0013	kingfish (Menticirrhus spp.)	Menticirrhus spp.	4	0.08
0211	Atlantic moonfish	Selene setapinnis	4	0.08
0916	unidentified herring	Clupeidae	4	0.08
0539	cumacean (Oxyurostylis smithi)	Oxyurostylis smithi	4	0.08
5011	unidentified shrimp zoea	Decapoda	4	0.08
5035	unidentified crab	Decapoda	4	0.08
0281	unidentified gobies	Gobiidae	3	0.06
0674	unidentified cumacean	Cumacea	3	0.06
0500	short-browed mud shrimp	Gilvossius setimanus	3	0.06
0573	estuarine long-eyed shrimp	Ogyrides alphaerostris	3	0.06
5012	crab parts	crab parts	3	0.06
0683	isopod (Livoneca redmanii)	Livoneca redmanii	3	0.06
0959	lazy fish lice	Argulus spp.	3	0.06
1025	isopod (Politolana concharum)	Politolana concharum	3	0.06
0504	wood	Plantae	3	0.06
0017	Loligo squid	Loligo spp.	3	0.06
0495	lancelets	Branchiostoma spp.	3	0.06
0510	clam worm (Nereis spp.)	Nereis spp.	3	0.06
0071	northern searobin	Prionotus carolinus	2	0.04
0205	round scad	Decapterus punctatus	2	0.04
0236	smallmouth flounder	Etropus microstomus	2	0.04
0621	mantis shrimp	Squilla empusa	2	0.04
5038	unidentified copepod (Copepoda)	Copepoda	2	0.04
0839	swimming crabs	Portunids	2	0.04
0917	unidentified hermit crab	Paguroidea	2	0.04
5031	rock	rock	2	0.04
0498	unidentified bivalve	Bivalvia	2	0.04
5039	unidentified clam	Bivalvia	2	0.04
0995	unidentified animal	unidentified animal	2	0.04

bony fishes	cartilaginous fishes
crustaceans	other animals
molluscs	miscellaneous
worms	

Prey Species	COMMON	LATIN	COUNT	PERCENT
0669	polychaete ( <i>Clymenella zonalis</i> )	<i>Clymenella zonalis</i>	2	0.04
0754	polychaete ( <i>Ophelia denticulata</i> )	<i>Ophelia denticulata</i>	2	0.04
0002	black seabass	<i>Centropristis striata</i>	1	0.02
0015	red hake	<i>Urophycis chuss</i>	1	0.02
0027	blueback herring	<i>Alosa aestivalis</i>	1	0.02
0043	Atlantic mackerel	<i>Scomber scombrus</i>	1	0.02
0057	southern kingfish	<i>Menticirrhus americanus</i>	1	0.02
0150	Atlantic silverside	<i>Menidia menidia</i>	1	0.02
0156	unidentified pipefishes	<i>Syngnathus</i> spp.	1	0.02
0214	banded drum	<i>Larimus fasciatus</i>	1	0.02
0219	Atlantic cutlassfish	<i>Trichiurus lepturus</i>	1	0.02
0247	Gulf Stream flounder	<i>Citharichthys arcifrons</i>	1	0.02
1023	left-eye flounders ( <i>Etropus</i> )	<i>Etropus</i> spp.	1	0.02
5002	unidentified flatfish	<i>Pleuronectiformes</i>	1	0.02
0658	skeleton shrimp ( <i>Caprellidae</i> )	<i>Caprellidae</i> spp	1	0.02
0659	amphipod ( <i>Casco bigelowi</i> )	<i>Casco bigelowi</i>	1	0.02
0722	big-eyed amphipod	<i>Hyperiid</i> ae	1	0.02
0921	skeleton shrimp ( <i>Caprella penantis</i> )	<i>Caprella penantis</i>	1	0.02
0741	copepod ( <i>Nannocalanus minor</i> )	<i>Nannocalanus minor</i>	1	0.02
0590	flat-browed mud shrimp	<i>Upogebia affinis</i>	1	0.02
0601	eastern tube crab	<i>Polyonyx gibbesi</i>	1	0.02
0609	porcelain crab	<i>Porcellana sigsbeiana</i>	1	0.02
0622	brown shrimp	<i>Farfantepenaeus aztecus</i>	1	0.02
0624	olivepit porcelain crab	<i>Euceramus praelongus</i>	1	0.02
0653	burrowing shrimp	<i>Axius serratus</i>	1	0.02
0656	Atlantic rock crab	<i>Cancer irroratus</i>	1	0.02
0675	unidentified decapod (crabs, shrimp, lobsters)	Decapoda	1	0.02
0679	bristled longbeak	<i>Dichelopandalus leptocerus</i>	1	0.02
0864	Atlantic sand crab	<i>Emerita talpoida</i>	1	0.02
0933	unidentified ghost shrimps	<i>Callinassidae</i>	1	0.02
1010	unidentified mud shrimp	<i>Thalassinidea</i>	1	0.02
5016	unidentified rock crab	<i>Cancer</i> spp.	1	0.02
0526	isopod ( <i>Chiridotea</i> spp.)	<i>Chiridotea</i> spp.	1	0.02
0705	shell	shell	1	0.02
5029	eelgrass	<i>Zostera marina</i>	1	0.02
0802	blue mussel	<i>Mytilus edulis</i>	1	0.02
0514	pitted baby-bubble	<i>Rictaxis punctostriatus</i>	1	0.02
0884	unidentified drill or snail	Gastropoda	1	0.02
0939	limpet nudibranch	<i>Doridella obscura</i>	1	0.02
0709	unidentified mollusc meat	Mollusca	1	0.02
0703	unidentified hydroid	Cnidaria	1	0.02
0505	unidentified insect	Insecta	1	0.02
0824	sea squirts ( <i>Molgula</i> spp.)	<i>Molgula</i> spp.	1	0.02
5007	sea squirt ( <i>Molgula manhattensis</i> )	<i>Molgula manhattensis</i>	1	0.02
0511	polychaete ( <i>Eteone</i> spp.)	<i>Eteone</i> spp.	1	0.02
0629	unidentified worm	worm	1	0.02

bony fishes	cartilaginous fishes
crustaceans	other animals
molluscs	miscellaneous
worms	

Prey Species	COMMON	LATIN	COUNT	PERCENT
0698	chevron worm ( <i>Goniada norvegica</i> )	<i>Goniada norvegica</i>	1	0.02
0710	fifteen-scaled worm ( <i>Harmothoe acanellae</i> )	<i>Harmothoe acanellae</i>	1	0.02
0892	worm tubes	worm tubes	1	0.02

# *Pomatomus saltatrix*

VIMSCODE: 0009

Common Name: Bluefish

Stomachs Processed (Full Workup Samples): 2,938

% Empty Stomachs or No/Improper Sample: 18%

bony fishes	cartilaginous fishes
crustaceans	other animals
molluscs	miscellaneous
worms	

Prey Species	COMMON	LATIN	COUNT	PERCENT
0103	bay anchovy	Anchoa mitchilli	1631	55.51
5000	unidentified fish	Actinopterygii	572	19.47
0004	butterfish	Peprilus triacanthus	560	19.06
0102	striped anchovy	Anchoa hepsetus	246	8.37
1028	longfin inshore squid	Loligo pealeii	183	6.23
0001	scup	Stenotomus chrysops	131	4.46
0491	sand lances	Ammodytes spp.	76	2.59
0009	bluefish	Pomatomus saltatrix	36	1.23
0529	fish scales	fish scales	33	1.12
0399	common anchovies	Anchoa spp.	28	0.95
0708	unidentified material	unidentified material	25	0.85
0007	weakfish	Cynoscion regalis	23	0.78
0937	silver anchovy	Engraulis eurystole	22	0.75
0916	unidentified herring	Clupeidae	20	0.68
0076	round herring	Etrumeus teres	17	0.58
5006	vegetation	Plantae	12	0.41
0037	Atlantic menhaden	Brevoortia tyrannus	11	0.37
0155	unidentified silversides	Menidia spp.	10	0.34
0211	Atlantic moonfish	Selene setapinnis	9	0.31
0006	silver hake	Merluccius bilinearis	8	0.27
0023	searobins (Prionotus spp.)	Prionotus spp.	8	0.27
0895	trash	trash	6	0.20
0005	Atlantic croaker	Micropogonias undulatus	5	0.17
0053	codlings	Urophycis spp.	5	0.17
0213	silver perch	Bairdiella chrysoura	5	0.17
5031	rock	rock	5	0.17
0963	unidentified croaker/drum	Sciaenidae	4	0.14
0636	four-eyed crustaceans (Ampelisca spp.)	Ampelisca spp.	4	0.14
0673	unidentified crustacean	Crustacea	4	0.14
5038	unidentified copepod (Copepoda)	Copepoda	4	0.14
0542	trash, plastic	plastic trash	4	0.14
0790	jackknife clams (razor clams)	Solenioidea	4	0.14
0013	kingfish (Menticirrhus spp.)	Menticirrhus spp.	3	0.10
0029	Atlantic herring	Clupea harengus	3	0.10
0699	mysid	Neomysis americana	3	0.10
0545	blue crab megalopa	Callinectes spp.	3	0.10
0595	roughneck shrimp	Rimapenaeus constrictus	3	0.10
0478	macro algae	macro algae	3	0.10
5029	eelgrass	Zostera marina	3	0.10

bony fishes	cartilaginous fishes
crustaceans	other animals
molluscs	miscellaneous
worms	

Prey Species	COMMON	LATIN	COUNT	PERCENT
0709	unidentified mollusc meat	Mollusca	3	0.10
0038	Atlantic thread herring	Opisthonema oglinum	2	0.07
0046	gray mullets	Mugil spp.	2	0.07
0225	northern stargazer	Astroscopus guttatus	2	0.07
0604	sand shrimp	Crangon septemspinosa	2	0.07
0612	lady crab	Ovalipes ocellatus	2	0.07
0929	isopod (Cymothoidae)	Cymothoidae	2	0.07
0498	unidentified bivalve	Bivalvia	2	0.07
0017	Loligo squid	Loligo spp.	2	0.07
0995	unidentified animal	unidentified animal	2	0.07
0002	black seabass	Centropristis striata	1	0.03
0014	tilefish	Lopholatilus chamaeleonticeps	1	0.03
0015	red hake	Urophycis chuss	1	0.03
0027	blueback herring	Alosa aestivalis	1	0.03
0031	striped bass	Morone saxatilis	1	0.03
0032	white perch	Morone americana	1	0.03
0033	spot	Leiostomus xanthurus	1	0.03
0070	spotted hake	Urophycis regia	1	0.03
0101	longnose gar	Lepisosteus osseus	1	0.03
0129	lined seahorse	Hippocampus erectus	1	0.03
0156	unidentified pipefishes	Syngnathus spp.	1	0.03
0214	banded drum	Larimus fasciatus	1	0.03
0216	pinfish	Lagodon rhomboides	1	0.03
0230	northern sennet	Sphyraena borealis	1	0.03
0236	smallmouth flounder	Etropus microstomus	1	0.03
0339	bigeye	Priacanthus arenatus	1	0.03
0365	guaguanche	Sphyraena guachancho	1	0.03
5002	unidentified flatfish	Pleuronectiformes	1	0.03
0507	common burrower amphipod	Leptocheirus plumulosus	1	0.03
0543	amphipod (Jassa falcata)	Jassa falcata	1	0.03
0694	amphipod (Gammarus spp.)	Gammarus spp.	1	0.03
0722	big-eyed amphipod	Hyperidae	1	0.03
0841	unidentified amphipod	Amphipoda spp.	1	0.03
0518	calanoid copepod	calanoid copepod	1	0.03
0574	unidentified mysid	Mysidae	1	0.03
0672	cumacean (Petalosarsia spp.)	Petalosarsia spp.	1	0.03
0952	berg-salmon gill worm	Lernaenicus radiatus	1	0.03
0973	unidentified crab zoea	Decapoda	1	0.03
5001	unidentified shrimp	Decapoda	1	0.03
5016	unidentified rock crab	Cancer spp.	1	0.03
0683	isopod (Livoneca redmanii)	Livoneca redmanii	1	0.03
0504	wood	Plantae	1	0.03
0930	fishing lure	fishing lure	1	0.03
0957	plant seed	plant seed	1	0.03
1002	unidentified seagrasses	Zostera/Ruppia spp.	1	0.03
0661	unidentified cephalopoda	Cephalopoda	1	0.03
0725	Atlantic brief squid	Lolliguncula brevis	1	0.03



bony fishes	cartilaginous fishes
crustaceans	other animals
molluscs	miscellaneous
worms	

Prey Species	COMMON	LATIN	COUNT	PERCENT
0884	unidentified drill or snail	Gastropoda	1	0.03
0988	ambiguous bryozoan	Anguinella palmata	1	0.03
0898	beetle adult	Coleoptera	1	0.03
0911	salps	Salpidae	1	0.03
0576	bloodworm	Glycera americana	1	0.03
0775	unidentified polychaete	Polychaeta	1	0.03
0901	nematode	Nematoda	1	0.03

# *Alosa pseudoharengus*

VIMSCODE: 0026

Common Name: Alewife

Stomachs Processed (Full Workup Samples): 807

% Empty Stomachs or No/Improper Sample: 12%

bony fishes	cartilaginous fishes
crustaceans	other animals
molluscs	miscellaneous
worms	

Prey Species	COMMON	LATIN	COUNT	PERCENT
0708	unidentified material	unidentified material	216	26.77
0518	calanoid copepod	calanoid copepod	93	11.52
0604	sand shrimp	Crangon septemspinosa	45	5.58
0636	four-eyed amphipods (Ampelisca spp.)	Ampelisca spp.	36	4.46
0507	common burrower amphipod	Leptocheirus plumulosus	35	4.34
0841	unidentified amphipod	Amphipoda spp.	31	3.84
0574	unidentified mysid	Mysidae	30	3.72
0699	mysid	Neomysis americana	30	3.72
5020	mound back isopod	Edotia triloba	23	2.85
0671	amphipod (Corophium spp.)	Corophium spp.	16	1.98
0539	cumacean (Oxyurostylis smithi)	Oxyurostylis smithi	16	1.98
5011	unidentified shrimp zoea	Decapoda	16	1.98
5006	vegetation	Plantae	12	1.49
0673	unidentified crustacean	Crustacea	11	1.36
5000	unidentified fish	Actinopterygii	10	1.24
0674	unidentified cumacean	Cumacea	10	1.24
0758	unidentified right-hand hermit crab	Pagurus spp.	9	1.12
5032	animal tubes	animal tubes	9	1.12
0505	unidentified insect	Insecta	9	1.12
0555	unidentified copepod	Copepoda	8	0.99
0918	crustaceans (Edotia)	Edotia spp.	8	0.99
0504	wood	Plantae	8	0.99
0775	unidentified polychaete	Polychaeta	7	0.87
0491	sand lances	Ammodytes spp.	6	0.74
0971	unidentified zooplankton	unidentified zooplankton	6	0.74
0571	wasps, bees, ants	Hymenoptera	6	0.74
0740	mysid (Americamysis bigelowi)	Mysidopsis bigelowi	5	0.62
0738	red-eyed amphipod	Monoculodes edwardsi	4	0.50
5038	unidentified copepod (Copepoda)	Copepoda	4	0.50
0973	unidentified crab zoea	Decapoda	4	0.50
0705	shell	shell	4	0.50
0802	blue mussel	Mytilus edulis	4	0.50
0902	cumacean (Cyclaspis spp.)	Cyclaspis spp.	3	0.37
0703	unidentified hydroid	Cnidaria	3	0.37
0697	unidentified bloodworm	Glycera spp.	3	0.37
0694	amphipod (Gammarus spp.)	Gammarus spp.	2	0.25
0833	unidentified pea crab	Pinnixa spp.	2	0.25
5001	unidentified shrimp	Decapoda	2	0.25
0542	trash, plastic	plastic trash	2	0.25

bony fishes	cartilaginous fishes
crustaceans	other animals
molluscs	miscellaneous
worms	

Prey Species	COMMON	LATIN	COUNT	PERCENT
0884	unidentified drill or snail	Gastropoda	2	0.25
0995	unidentified animal	unidentified animal	2	0.25
0510	clam worm ( <i>Nereis</i> spp.)	<i>Nereis</i> spp.	2	0.25
0764	polychaete ( <i>Pherusa affinis</i> )	<i>Pherusa affinis</i>	2	0.25
0053	codlings	<i>Urophycis</i> spp.	1	0.12
0103	bay anchovy	<i>Anchoa mitchilli</i>	1	0.12
0529	fish scales	fish scales	1	0.12
0534	amphipod ( <i>Microprotopus raneyi</i> )	<i>Microprotopus raneyi</i>	1	0.12
0641	amphipod ( <i>Anonyx lilljeborgi</i> )	<i>Anonyx lilljeborgi</i>	1	0.12
0517	water fleas (Family unk.)	Cladocera	1	0.12
0623	shrimp ( <i>Acetes</i> spp.)	<i>Acetes</i> spp.	1	0.12
0675	unidentified decapod (crabs, shrimp, lobsters)	Decapoda	1	0.12
5035	unidentified crab	Decapoda	1	0.12
0526	isopod ( <i>Chiridotea</i> spp.)	<i>Chiridotea</i> spp.	1	0.12
0657	unidentified isopod	<i>Isopoda</i> spp.	1	0.12
0684	isopod ( <i>Edotia acuta</i> )	<i>Edotia acuta</i>	1	0.12
0959	lazy fish lice	<i>Argulus</i> spp.	1	0.12
0957	plant seed	plant seed	1	0.12
5039	unidentified clam	Bivalvia	1	0.12
0603	horseshoe crab	<i>Limulus polyphemus</i>	1	0.12
0702	sand dollar	<i>Echinarachnius parma</i>	1	0.12
0495	lancelets	<i>Branchiostoma</i> spp.	1	0.12
0754	polychaete ( <i>Ophelia denticulata</i> )	<i>Ophelia denticulata</i>	1	0.12

# *Alosa aestivalis*

VIMSCODE: 0027

Common Name: Blueback Herring

Stomachs Processed (Full Workup Samples): 562

% Empty Stomachs or No/Improper Sample: 12%

bony fishes	cartilaginous fishes
crustaceans	other animals
molluscs	miscellaneous
worms	

Prey Species	COMMON	LATIN	COUNT	PERCENT
0518	calanoid copepod	calanoid copepod	210	37.37
0708	unidentified material	unidentified material	68	12.10
5038	unidentified copepod (Copepoda)	Copepoda	18	3.20
5011	unidentified shrimp zoea	Decapoda	14	2.49
0555	unidentified copepod	Copepoda	12	2.14
0574	unidentified mysid	Mysidae	8	1.42
0673	unidentified crustacean	Crustacea	7	1.25
0636	four-eyed amphipods ( <i>Ampelisca</i> spp.)	<i>Ampelisca</i> spp.	4	0.71
0699	mysid	<i>Neomysis americana</i>	4	0.71
0973	unidentified crab zoea	Decapoda	4	0.71
0995	unidentified animal	unidentified animal	3	0.53
0539	cumacean ( <i>Oxyurostylis smithi</i> )	<i>Oxyurostylis smithi</i>	2	0.36
0674	unidentified cumacean	Cumacea	2	0.36
0705	shell	shell	2	0.36
0971	unidentified zooplankton	unidentified zooplankton	2	0.36
0775	unidentified polychaete	Polychaeta	2	0.36
5000	unidentified fish	Actinopterygii	1	0.18
0507	common burrower amphipod	<i>Leptocheirus plumulosus</i>	1	0.18
0841	unidentified amphipod	Amphipoda spp.	1	0.18
0517	water fleas (Family unk.)	Cladocera	1	0.18
0808	sessile barnacles	Sessilia	1	0.18
0902	cumacean ( <i>Cyclaspis</i> spp.)	<i>Cyclaspis</i> spp.	1	0.18
0918	isopods ( <i>Edotia</i> )	<i>Edotia</i> spp.	1	0.18
5020	mound back isopod	<i>Edotia triloba</i>	1	0.18
5032	animal tubes	animal tubes	1	0.18
5006	vegetation	Plantae	1	0.18
0498	unidentified bivalve	Bivalvia	1	0.18
0988	ambiguous bryozoan	<i>Anguinella palmata</i>	1	0.18
0754	polychaete ( <i>Ophelia denticulata</i> )	<i>Ophelia denticulata</i>	1	0.18
0764	polychaete ( <i>Pherusa affinis</i> )	<i>Pherusa affinis</i>	1	0.18

# *Alosa sapidissima*

VIMSCODE: 0030

Common Name: American Shad

Stomachs Processed (Full Workup Samples): 969

% Empty Stomachs or No/Improper Sample: 6%

bony fishes	cartilaginous fishes
crustaceans	other animals
molluscs	miscellaneous
worms	

Prey Species	COMMON	LATIN	COUNT	PERCENT
0518	calanoid copepod	calanoid copepod	199	20.54
0708	unidentified material	unidentified material	93	9.60
0574	unidentified mysid	Mysidae	56	5.78
0699	mysid	Neomysis americana	40	4.13
0507	common burrower amphipod	Leptocheirus plumulosus	33	3.41
0636	four-eyed amphipods (Ampelisca spp.)	Ampelisca spp.	32	3.30
0555	unidentified copepod	Copepoda	31	3.20
0505	unidentified insect	Insecta	30	3.10
0841	unidentified amphipod	Amphipoda spp.	26	2.68
5020	mound back isopod	Edotia triloba	24	2.48
0918	isopods (Edotia)	Edotia spp.	19	1.96
5038	unidentified copepod (Copepoda)	Copepoda	16	1.65
0674	unidentified cumacean	Cumacea	13	1.34
0604	sand shrimp	Crangon septemspinosa	12	1.24
5006	vegetation	Plantae	12	1.24
0539	cumacean (Oxyurostylis smithi)	Oxyurostylis smithi	10	1.03
0740	mysid (Americamysis bigelowi)	Mysidopsis bigelowi	10	1.03
5032	animal tubes	animal tubes	9	0.93
5000	unidentified fish	Actinopterygii	6	0.62
0738	red-eyed amphipod	Monoculodes edwardsi	6	0.62
0673	unidentified crustacean	Crustacea	6	0.62
0973	unidentified crab zoea	Decapoda	6	0.62
5011	unidentified shrimp zoea	Decapoda	6	0.62
5037	sand	sand	6	0.62
0571	wasps, bees, ants	Hymenoptera	6	0.62
0671	amphipod (Corophium spp.)	Corophium spp.	5	0.52
0703	unidentified hydroid	Cnidaria	5	0.52
0775	unidentified polychaete	Polychaeta	5	0.52
0103	bay anchovy	Anchoa mitchilli	4	0.41
0526	isopod (Chiridotia spp.)	Chiridotia spp.	4	0.41
0504	wood	Plantae	4	0.41
0884	unidentified drill or snail	Gastropoda	4	0.41
0659	amphipod (Casco bigelowi)	Casco bigelowi	3	0.31
0802	blue mussel	Mytilus edulis	3	0.31
5039	unidentified clam	Bivalvia	3	0.31
0694	amphipod (Gammarus spp.)	Gammarus spp.	2	0.21
0758	unidentified right-hand hermit crab	Pagurus spp.	2	0.21
5001	unidentified shrimp	Decapoda	2	0.21
0657	unidentified isopod	Isopoda spp.	2	0.21

bony fishes	cartilaginous fishes
crustaceans	other animals
molluscs	miscellaneous
worms	

Prey Species	COMMON	LATIN	COUNT	PERCENT
0542	trash, plastic	plastic trash	2	0.21
5031	rock	rock	2	0.21
0704	shark eye moon snail	Polinices duplicatus	2	0.21
0995	unidentified animal	unidentified animal	2	0.21
0510	clam worm (Nereis spp.)	Nereis spp.	2	0.21
0529	fish scales	fish scales	1	0.10
0534	amphipod (Microprotopus raneyi)	Microprotopus raneyi	1	0.10
0919	amphipod (Listriella clymenellae)	Listriella clymenellae	1	0.10
1012	amphipod (Amphiporeia virginiana)	Amphiporeia virginiana	1	0.10
5021	slender tube builder	Corophium lacustre	1	0.10
0509	copepod (Harpacticoid)	Harpacticoid copepod	1	0.10
0566	cumacean (Almyracuma proximoculi)	Almyracuma proximoculi	1	0.10
0578	swimming crab (Portunus spp.)	Portunus spp.	1	0.10
0606	swimming crab (Bathynectes superba)	Bathynectes superba	1	0.10
0656	Atlantic rock crab	Cancer irroratus	1	0.10
0675	unidentified decapod (crabs, shrimp, lobsters)	Decapoda	1	0.10
0833	unidentified pea crab	Pinnixa spp.	1	0.10
5012	crab parts	crab parts	1	0.10
0663	isopod (Chiridotea tuftsii)	Chiridotea tuftsii	1	0.10
0959	lazy fish lice	Argulus spp.	1	0.10
0705	shell	shell	1	0.10
5005	detritus	detritus	1	0.10
0498	unidentified bivalve	Bivalvia	1	0.10
0816	Atlantic jackknife clam	Ensis directus	1	0.10
0838	Atlantic oyster drill	Urosalpinx cinerea	1	0.10
0939	limpet nudibranch	Doridella obscura	1	0.10
0898	beetle adult	Coleoptera	1	0.10
0629	unidentified worm	worm	1	0.10

# Morone saxatilis

VIMSCODE: 0031

Common Name: Striped Bass

Stomachs Processed (Full Workup Samples): 259

% Empty Stomachs or No/Improper Sample: 8%

bony fishes	cartilaginous fishes
crustaceans	other animals
molluscs	miscellaneous
worms	

Prey Species	COMMON	LATIN	COUNT	PERCENT
0103	bay anchovy	Anchoa mitchilli	249	96.14
0004	butterfish	Peprilus triacanthus	128	49.42
0001	scup	Stenotomus chrysops	55	21.24
0491	sand lances	Ammodytes spp.	39	15.06
0037	Atlantic menhaden	Brevoortia tyrannus	35	13.51
5000	unidentified fish	Actinopterygii	33	12.74
1028	longfin inshore squid	Loligo pealeii	29	11.20
1025	isopod (Politolana concharum)	Politolana concharum	25	9.65
0102	striped anchovy	Anchoa hepsetus	22	8.49
0937	silver anchovy	Engraulis eurystole	21	8.11
0604	sand shrimp	Crangon septemspinosa	18	6.95
0027	blueback herring	Alosa aestivalis	14	5.41
0071	northern searobin	Prionotus carolinus	13	5.02
0697	unidentified bloodworm	Glycera spp.	12	4.63
0612	lady crab	Ovalipes ocellatus	11	4.25
0709	unidentified mollusc meat	Mollusca	11	4.25
0009	bluefish	Pomatomus saltatrix	9	3.47
5031	rock	rock	7	2.70
0801	soft shell clam	Mya arenaria	7	2.70
0006	silver hake	Merluccius bilinearis	6	2.32
0841	unidentified amphipod	Amphipoda spp.	6	2.32
0916	unidentified herring	Clupeidae	5	1.93
0694	amphipod (Gammarus spp.)	Gammarus spp.	5	1.93
0800	moon snail	Polinices heros	5	1.93
0007	weakfish	Cynoscion regalis	4	1.54
0076	round herring	Etrumeus teres	4	1.54
0708	unidentified material	unidentified material	4	1.54
0802	blue mussel	Mytilus edulis	4	1.54
0775	unidentified polychaete	Polychaeta	4	1.54
0399	common anchovies	Anchoa spp.	3	1.16
5039	unidentified clam	Bivalvia	3	1.16
0742	New England dog whelk	Nassarius trivittatus	3	1.16
0892	worm tubes	worm tubes	3	1.16
0026	alewife	Alosa pseudoharengus	2	0.77
0033	spot	Leiostomus xanthurus	2	0.77
0621	mantis shrimp	Squilla empusa	2	0.77
0656	Atlantic rock crab	Cancer irroratus	2	0.77
0683	isopod (Livoneca redmanii)	Livoneca redmanii	2	0.77
0816	Atlantic jackknife clam	Ensis directus	2	0.77

bony fishes	cartilaginous fishes
crustaceans	other animals
molluscs	miscellaneous
worms	

Prey Species	COMMON	LATIN	COUNT	PERCENT
0048	unidentified whelk	Melongenidae	2	0.77
0995	unidentified animal	unidentified animal	2	0.77
0702	sand dollar	Echinarachnius parma	2	0.77
0002	black seabass	Centropristis striata	1	0.39
0023	searobins (Prionotus spp.)	Prionotus spp.	1	0.39
0031	striped bass	Morone saxatilis	1	0.39
0070	spotted hake	Urophycis regia	1	0.39
0205	round scad	Decapterus punctatus	1	0.39
0206	bigeye scad	Selar crumenophthalmus	1	0.39
0211	Atlantic moonfish	Selene setapinnis	1	0.39
0218	cunner	Tautogolabrus adspersus	1	0.39
0529	fish scales	fish scales	1	0.39
5002	unidentified flatfish	Pleuronectiformes	1	0.39
0636	four-eyed amphipods (Ampelisca spp.)	Ampelisca spp.	1	0.39
1012	amphipod (Amphiporeia virginiana)	Amphiporeia virginiana	1	0.39
0673	unidentified crustacean	Crustacea	1	0.39
0578	swimming crab (Portunus spp.)	Portunus spp.	1	0.39
5012	crab parts	crab parts	1	0.39
5016	unidentified rock crab	Cancer spp.	1	0.39
5035	unidentified crab	Decapoda	1	0.39
0559	isopod (Sphaeroma quadridentatum)	Sphaeroma quadridentatum	1	0.39
0570	sand isopod	Chiridotea almyra	1	0.39
0929	isopod (Cymothoidae)	Cymothoidae	1	0.39
5020	mound back isopod	Edotia triloba	1	0.39
5006	vegetation	Plantae	1	0.39
5029	eelgrass	Zostera marina	1	0.39
0603	horseshoe crab	Limulus polyphemus	1	0.39
0650	unidentified Asteroiid sea star	Asteriidae	1	0.39
0703	unidentified hydroid	Cnidaria	1	0.39
0495	lancelets	Branchiostoma spp.	1	0.39



# *Pogonias cromis*

VIMSCODE: 0034

Common Name: Black Drum

Stomachs Processed (Full Workup Samples): 106

% Empty Stomachs or No/Improper Sample: 19%

bony fishes	cartilaginous fishes
crustaceans	other animals
molluscs	miscellaneous
worms	

Prey Species	COMMON	LATIN	COUNT	PERCENT
5039	unidentified clam	Bivalvia	28	26.42
0708	unidentified material	unidentified material	11	10.38
0508	isopod	Ancinus depressus	9	8.49
5031	rock	rock	5	4.72
0790	jackknife clams (razor clams)	Solenioidea	4	3.77
0758	unidentified right-hand hermit crab	Pagurus spp.	3	2.83
0816	Atlantic jackknife clam	Ensis directus	3	2.83
0820	clam (Macoma spp.)	Macoma spp.	3	2.83
5003	unidentified clam siphon	Bivalvia	3	2.83
0699	mysid	Neomysis americana	2	1.89
5037	sand	sand	2	1.89
0498	unidentified bivalve	Bivalvia	2	1.89
0103	bay anchovy	Anchoa mitchilli	1	0.94
0529	fish scales	fish scales	1	0.94
0636	four-eyed amphipods (Ampelisca spp.)	Ampelisca spp.	1	0.94
0574	unidentified mysid	Mysidae	1	0.94
5012	crab parts	crab parts	1	0.94
5035	unidentified crab	Decapoda	1	0.94
7581	long-clawed hermit crab	Pagurus longicarpus	1	0.94
0657	unidentified isopod	Isopoda spp.	1	0.94
5020	mound back isopod	Edotia triloba	1	0.94
0504	wood	Plantae	1	0.94
0705	shell	shell	1	0.94
0802	blue mussel	Mytilus edulis	1	0.94
0884	unidentified drill or snail	Gastropoda	1	0.94
5015	interrupted turbonilla	Turbonilla interrupta	1	0.94
0709	unidentified mollusc meat	Mollusca	1	0.94
0775	unidentified polychaete	Polychaeta	1	0.94

# Sciaenops ocellatus

VIMSCODE: 0035

Common Name: Red Drum

Stomachs Processed (Full Workup Samples): 24

% Empty Stomachs or No/Improper Sample: 0%

bony fishes	cartilaginous fishes
crustaceans	other animals
molluscs	miscellaneous
worms	

Prey Species	COMMON	LATIN	COUNT	PERCENT
0005	Atlantic croaker	Micropogonias undulatus	13	54.17
0033	spot	Leiostomus xanthurus	9	37.50
0102	striped anchovy	Anchoa hepsetus	9	37.50
0037	Atlantic menhaden	Brevoortia tyrannus	6	25.00
5000	unidentified fish	Actinopterygii	4	16.67
0103	bay anchovy	Anchoa mitchilli	3	12.50
0004	butterfish	Peprilus triacanthus	2	8.33
0007	weakfish	Cynoscion regalis	2	8.33
0001	scup	Stenotomus chrysops	1	4.17
0003	summer flounder	Paralichthys dentatus	1	4.17
0011	harvestfish	Peprilus alepidotus	1	4.17
0013	kingfish (Menticirrhus spp.)	Menticirrhus spp.	1	4.17
0059	pigfish	Orthopristis chrysoptera	1	4.17
0070	spotted hake	Urophycis regia	1	4.17
0963	unidentified croaker/drum	Sciaenidae	1	4.17
5002	unidentified flatfish	Pleuronectiformes	1	4.17
5012	crab parts	crab parts	4	16.67
0578	swimming crab (Portunus spp.)	Portunus spp.	3	12.50
5026	unidentified spider crab	Libinia spp.	3	12.50
0612	lady crab	Ovalipes ocellatus	2	8.33
0861	crabs - Callinectes spp.	Callinectes spp.	1	4.17
5016	unidentified rock crab	Cancer spp.	1	4.17
5035	unidentified crab	Decapoda	1	4.17
7582	flat-clawed hermit crab	Pagurus pollicaris	1	4.17
5029	eelgrass	Zostera marina	1	4.17
5039	unidentified clam	Bivalvia	1	4.17
0603	horseshoe crab	Limulus polyphemus	1	4.17
0702	sand dollar	Echinarachnius parma	1	4.17

# *Pleuronectes americanus*

VIMSCODE: 0044

Common Name: Winter Flounder

Stomachs Processed (Full Workup Samples): 3,200

% Empty Stomachs or No/Improper Sample: 10%

bony fishes	cartilaginous fishes
crustaceans	other animals
molluscs	miscellaneous
worms	

Prey Species	COMMON	LATIN	COUNT	PERCENT
0775	unidentified polychaete	Polychaeta	780	24.38
0636	four-eyed amphipods ( <i>Ampelisca</i> spp.)	<i>Ampelisca</i> spp.	689	21.53
0708	unidentified material	unidentified material	665	20.78
0507	common burrower amphipod	<i>Leptocheirus plumulosus</i>	550	17.19
0671	amphipod ( <i>Corophium</i> spp.)	<i>Corophium</i> spp.	412	12.88
0764	polychaete ( <i>Pherusa affinis</i> )	<i>Pherusa affinis</i>	314	9.81
0841	unidentified amphipod	Amphipoda spp.	200	6.25
0697	unidentified bloodworm	<i>Glycera</i> spp.	199	6.22
0643	sea anemones	Actiniaria	195	6.09
0798	polychaete ( <i>Terebellidae</i> )	<i>Terebellidae</i>	191	5.97
5020	mound back isopod	<i>Edotia triloba</i>	131	4.09
5039	unidentified clam	Bivalvia	127	3.97
0694	amphipod ( <i>Gammarus</i> spp.)	<i>Gammarus</i> spp.	103	3.22
0674	unidentified cumacean	Cumacea	99	3.09
0703	unidentified hydroid	Cnidaria	99	3.09
5003	unidentified clam siphon	Bivalvia	98	3.06
0539	cumacean ( <i>Oxyurostylis smithi</i> )	<i>Oxyurostylis smithi</i>	65	2.03
0738	red-eyed amphipod	<i>Monoculodes edwardsi</i>	59	1.84
0656	Atlantic rock crab	<i>Cancer irroratus</i>	53	1.66
0995	unidentified animal	unidentified animal	50	1.56
5032	animal tubes	animal tubes	50	1.56
5037	sand	sand	50	1.56
5006	vegetation	Plantae	45	1.41
0604	sand shrimp	<i>Crangon septemspinosa</i>	43	1.34
0658	skeleton shrimp ( <i>Caprellidae</i> )	<i>Caprellidae</i> spp	39	1.22
0668	bamboo worm	<i>Clymenella torquata</i>	34	1.06
0705	shell	shell	30	0.94
0802	blue mussel	<i>Mytilus edulis</i>	29	0.91
5035	unidentified crab	Decapoda	28	0.88
5031	rock	rock	28	0.88
0498	unidentified bivalve	Bivalvia	26	0.81
5016	unidentified rock crab	<i>Cancer</i> spp.	25	0.78
0673	unidentified crustacean	Crustacea	23	0.72
0709	unidentified mollusc meat	Mollusca	23	0.72
0824	sea squirts ( <i>Molgula</i> spp.)	<i>Molgula</i> spp.	20	0.63
0659	amphipod ( <i>Casco bigelowi</i> )	<i>Casco bigelowi</i>	18	0.56
0884	unidentified drill or snail	Gastropoda	18	0.56
0629	unidentified worm	worm	18	0.56
0892	worm tubes	worm tubes	16	0.50

bony fishes	cartilaginous fishes
crustaceans	other animals
molluscs	miscellaneous
worms	

Prey Species	COMMON	LATIN	COUNT	PERCENT
0702	sand dollar	Echinarachnius parma	15	0.47
0478	macro algae	macro algae	14	0.44
1012	amphipod (Amphiporeia virginiana)	Amphiporeia virginiana	13	0.41
5012	crab parts	crab parts	13	0.41
0918	isopods (Edotia)	Edotia spp.	12	0.38
0828	unidentified sea cucumbers	Holothuroidea	12	0.38
0513	slender isopod	Cyathura polita	11	0.34
5025	lunar dove snail	Mitrella lunata	11	0.34
0495	lancelets	Branchiostoma spp.	11	0.34
0790	jackknife clams (razor clams)	Solenioidea	10	0.31
0657	unidentified isopod	Isopoda spp.	9	0.28
0663	isopod (Chiridotea tuftsii)	Chiridotea tuftsi	9	0.28
0585	mud	Miscellaneous	9	0.28
5007	sea squirt (Molgula manhattensis)	Molgula manhattensis	9	0.28
0833	unidentified pea crab	Pinnixa spp.	8	0.25
5001	unidentified shrimp	Decapoda	8	0.25
0816	Atlantic jackknife clam	Ensis directus	8	0.25
5000	unidentified fish	Actinopterygii	7	0.22
0653	burrowing shrimp	Axius serratus	7	0.22
1010	unidentified mud shrimp	Thalassinidea	7	0.22
0621	mantis shrimp	Squilla empusa	6	0.19
0500	short-browed mud shrimp	Gilvossius setimanus	6	0.19
0685	isopod (Edotia montosa)	Edotia montosa	6	0.19
0801	soft shell clam	Mya arenaria	6	0.19
0548	unidentified sponge	Porifera	6	0.19
0758	unidentified right-hand hermit crab	Pagurus spp.	5	0.16
0570	sand isopod	Chiridotea almyra	5	0.16
1025	isopod (Politolana concharum)	Politolana concharum	5	0.16
0504	wood	Plantae	5	0.16
0754	polychaete (Ophelia denticulata)	Ophelia denticulata	5	0.16
0699	mysid	Neomysis americana	4	0.13
0820	clam (Macoma spp.)	Macoma spp.	4	0.13
0888	stout tagelus	Tagelus plebeius	4	0.13
0650	unidentified Asteroidea sea star	Asteriidae	4	0.13
0651	unidentified sea stars	Asteroidea	4	0.13
0648	sessile tunicates	Ascidacea	4	0.13
0901	nematode	Nematoda	4	0.13
0529	fish scales	fish scales	3	0.09
0534	amphipod (Microprotopus raneyi)	Microprotopus raneyi	3	0.09
0579	Erichthonius brasiliensis	Erichthonius brasiliensis	3	0.09
0686	amphipod (Erichthonius rubricornis)	Erichthonius rubricornis	3	0.09
1009	skeleton shrimp (Caprella spp.)	Caprella spp.	3	0.09
0740	mysid (Americamysis bigelowi)	Mysidopsis bigelowi	3	0.09
0547	tube pea crab	Pinnixa chaetoptera	3	0.09
7582	flat-clawed hermit crab	Pagurus pollicaris	3	0.09
0091	Atlantic surfclam	Spisula solidissima	3	0.09
0584	narrowed macoma clam	Macoma tenta	3	0.09

bony fishes	cartilaginous fishes
crustaceans	other animals
molluscs	miscellaneous
worms	

Prey Species	COMMON	LATIN	COUNT	PERCENT
0742	New England dog whelk	Nassarius trivittatus	3	0.09
0825	bryozoans/dead man fingers	Alcyonidium spp.	3	0.09
0755	unidentified brittle stars	Ophiuroidea	3	0.09
0510	clam worm (Nereis spp.)	Nereis spp.	3	0.09
0641	amphipod (Anonyx lilljeborgi)	Anonyx lilljeborgi	2	0.06
0642	amphipod (Anonyx sarsi)	Anonyx sarsi	2	0.06
0921	skeleton shrimp (Caprella penantis)	Caprella penantis	2	0.06
1008	amphipod (Haustoriidae)	Haustoriidae	2	0.06
5038	unidentified copepod (Copepoda)	Copepoda	2	0.06
0590	flat-browed mud shrimp	Upogebia affinis	2	0.06
5018	pea crab (Pinnixa retinens)	Pinnixa retinens	2	0.06
5026	unidentified spider crab	Libinia spp.	2	0.06
0508	isopod	Ancinus depressus	2	0.06
0526	isopod (Chiridotea spp.)	Chiridotea spp.	2	0.06
0580	leaf	Plantae	2	0.06
5029	eelgrass	Zostera marina	2	0.06
0826	blood ark	Anadara ovalis	2	0.06
0836	clam (Yoldia spp.)	Yoldia spp.	2	0.06
0885	false angel wing	Petricolaria pholadiformes	2	0.06
1028	longfin inshore squid	Loligo pealeii	2	0.06
0847	keyhole urchin	Mellita quinquesperforata	2	0.06
0645	sea mouse	Aphrodita hastata	2	0.06
0667	trumpet worm	Pectinaria gouldi	2	0.06
0682	polychaete (Drilonereis spp.)	Drilonereis spp.	2	0.06
0230	northern sennet	Sphyraena borealis	1	0.03
0367	barbu	Polydactylus virginicus	1	0.03
0543	amphipod (Jassa falcata)	Jassa falcata	1	0.03
0634	four-eyed amphipods (Ampelisca abdita)	Ampelisca abdita	1	0.03
0761	amphipod (Parathemisto gaudichaudi)	Parathemisto gaudichaudi	1	0.03
0767	amphipod (Photis macrocoxa)	Photis macrocoxa	1	0.03
0779	amphipod (Protohaustorius wigleyi)	Protohaustorius wigleyi	1	0.03
0919	amphipod (Listriella clymenellae)	Listriella clymenellae	1	0.03
0923	skeleton shrimp (Paracaprella tenuis)	Paracaprella tenuis	1	0.03
0509	copepod (Harpacticoid)	Harpacticoid copepod	1	0.03
0555	unidentified copepod	Copepoda	1	0.03
0574	unidentified mysid	Mysidae	1	0.03
0677	cumacean (Diastylis bispinosa)	Diastylis bispinosa	1	0.03
0552	smooth mud crab	Hexapanopeus angustifrons	1	0.03
0593	six spine spider crab	Libinia dubia	1	0.03
0601	eastern tube crab	Polyonyx gibbesi	1	0.03
0612	lady crab	Ovalipes ocellatus	1	0.03
0617	acadian hermit crab	Pagurus acadianus	1	0.03
0626	green crab	Carcinus maenas	1	0.03
0679	bristled longbeak	Dichelopandalus leptocerus	1	0.03
0757	hairy hermit crab	Pagurus arcuatus	1	0.03
0858	spider crab	Anomalothir furcillatus	1	0.03
0933	unidentified ghost shrimps	Callianassidae	1	0.03

bony fishes	cartilaginous fishes
crustaceans	other animals
molluscs	miscellaneous
worms	

Prey Species	COMMON	LATIN	COUNT	PERCENT
5023	pea crab ( <i>Pinnixa cylindrica</i> )	<i>Pinnixa cylindrica</i>	1	0.03
0655	sea slater	<i>Idotea balthica</i>	1	0.03
0665	isopod ( <i>Cirolana polita</i> )	<i>Cirolana polita</i>	1	0.03
0684	isopod ( <i>Edotia acuta</i> )	<i>Edotia acuta</i>	1	0.03
0925	<i>Erichsonella attenuata</i>	<i>Erichsonella attenuata</i>	1	0.03
0929	isopod (Cymothoidae)	Cymothoidae	1	0.03
0971	unidentified zooplankton	unidentified zooplankton	1	0.03
1005	widgeongrass	<i>Ruppia maritima</i>	1	0.03
0022	sea scallop	<i>Placopecten magellanicus</i>	1	0.03
0583	baltic macoma clam	<i>Macoma balthica</i>	1	0.03
0804	glassy lyonsia	<i>Lyonsia hyalina</i>	1	0.03
0887	northern dwarf tellin	<i>Tellina agilis</i>	1	0.03
0941	Asian clam	<i>Corbicula fluminea</i>	1	0.03
0538	eastern melampus	<i>Melampus bidentatus</i>	1	0.03
0501	eastern beaded chiton	<i>Chaetopleura apiculata</i>	1	0.03
5036	unidentified mollusc	Mollusca	1	0.03
0689	marine bryozoans	Gymnolaemata	1	0.03
0496	unidentified echinoderm	Echinodermata	1	0.03
0564	caddisfly	Tricopteran	1	0.03
0991	ants	Formicidae	1	0.03
0814	mushroom cap	<i>Rhopilema verrilli</i>	1	0.03
0936	golden star tunicate	<i>Botryllus schlosseri</i>	1	0.03
0778	Priapulid worm	<i>Priapulus caudatus</i>	1	0.03
1001	unidentified Opheliid worm	Opheliidae	1	0.03

# *Pleuronectes ferruginea*

VIMSCODE: 0074

Common Name: Yellowtail Flounder

Stomachs Processed (Full Workup Samples): 74

% Empty Stomachs or No/Improper Sample: 12%

bony fishes	cartilaginous fishes
crustaceans	other animals
molluscs	miscellaneous
worms	

Prey Species	COMMON	LATIN	COUNT	PERCENT
0636	four-eyed amphipods ( <i>Ampelisca</i> spp.)	<i>Ampelisca</i> spp.	41	55.41
0708	unidentified material	unidentified material	24	32.43
0671	amphipod ( <i>Corophium</i> spp.)	<i>Corophium</i> spp.	11	14.86
0775	unidentified polychaete	<i>Polychaeta</i>	11	14.86
0507	common burrower amphipod	<i>Leptocheirus plumulosus</i>	8	10.81
0841	unidentified amphipod	<i>Amphipoda</i> spp.	8	10.81
5039	unidentified clam	<i>Bivalvia</i>	7	9.46
5020	mound back isopod	<i>Edotia triloba</i>	3	4.05
5031	rock	rock	3	4.05
0764	polychaete ( <i>Pherusa affinis</i> )	<i>Pherusa affinis</i>	3	4.05
0694	amphipod ( <i>Gammarus</i> spp.)	<i>Gammarus</i> spp.	2	2.70
0738	red-eyed amphipod	<i>Monoculodes edwardsi</i>	2	2.70
0539	cumacean ( <i>Oxyurostylis smithi</i> )	<i>Oxyurostylis smithi</i>	2	2.70
0674	unidentified cumacean	<i>Cumacea</i>	2	2.70
0705	shell	shell	2	2.70
0798	polychaete ( <i>Terebellidae</i> )	<i>Terebellidae</i>	2	2.70
0555	unidentified copepod	<i>Copepoda</i>	1	1.35
0740	mysid ( <i>Americamysis bigelowi</i> )	<i>Mysidopsis bigelowi</i>	1	1.35
0604	sand shrimp	<i>Crangon septemspinosa</i>	1	1.35
0583	baltic macoma clam	<i>Macoma balthica</i>	1	1.35
0702	sand dollar	<i>Echinarachnius parma</i>	1	1.35
5007	sea squirt ( <i>Molgula manhattensis</i> )	<i>Molgula manhattensis</i>	1	1.35
0682	polychaete ( <i>Drilonereis</i> spp.)	<i>Drilonereis</i> spp.	1	1.35
0697	unidentified bloodworm	<i>Glycera</i> spp.	1	1.35

# Tautoga onitis

VIMSCODE: 0055

Common Name: Tautog

Stomachs Processed (Full Workup Samples): 184

% Empty Stomachs or No/Improper Sample: 1%

bony fishes	cartilaginous fishes
crustaceans	other animals
molluscs	miscellaneous
worms	

Prey Species	COMMON	LATIN	COUNT	PERCENT
5012	crab parts	crab parts	49	26.63
5031	rock	rock	25	13.59
0656	Atlantic rock crab	Cancer irroratus	23	12.50
0708	unidentified material	unidentified material	20	10.87
0802	blue mussel	Mytilus edulis	18	9.78
5039	unidentified clam	Bivalvia	15	8.15
5026	unidentified spider crab	Libinia spp.	14	7.61
0705	shell	shell	14	7.61
0758	unidentified right-hand hermit crab	Pagurus spp.	13	7.07
5016	unidentified rock crab	Cancer spp.	13	7.07
5035	unidentified crab	Decapoda	10	5.43
0103	bay anchovy	Anchoa mitchilli	7	3.80
0624	olivepit porcelain crab	Euceramus praelongus	6	3.26
0498	unidentified bivalve	Bivalvia	6	3.26
0841	unidentified amphipod	Amphipoda spp.	5	2.72
0742	New England dog whelk	Nassarius trivittatus	5	2.72
0884	unidentified drill or snail	Gastropoda	5	2.72
0703	unidentified hydroid	Cnidaria	5	2.72
0671	amphipod (Corophium spp.)	Corophium spp.	4	2.17
0808	sessile barnacles	Sessilia	4	2.17
0600	jonah crab	Cancer borealis	4	2.17
0604	sand shrimp	Crangon septemspinosa	4	2.17
7581	long-clawed hermit crab	Pagurus longicarpus	4	2.17
0800	moon snail	Polinices heros	4	2.17
0689	marine bryozoans	Gymnolaemata	4	2.17
0840	purple sea urchin	Arbacia punctulata	4	2.17
0022	sea scallop	Placopecten magellanicus	3	1.63
0775	unidentified polychaete	Polychaeta	3	1.63
0053	codlings	Urophycis spp.	2	1.09
0921	skeleton shrimp (Caprella penantis)	Caprella penantis	2	1.09
0552	smooth mud crab	Hexapanopeus angustifrons	2	1.09
0594	unidentified mud crab	Xanthidae	2	1.09
0605	common spider crab	Libinia emarginata	2	1.09
0917	unidentified hermit crab	Paguroidea	2	1.09
5020	mound back isopod	Edotia triloba	2	1.09
5037	sand	sand	2	1.09
5006	vegetation	Plantae	2	1.09
0888	stout tagelus	Tagelus plebeius	2	1.09
0102	striped anchovy	Anchoa hepsetus	1	0.54



bony fishes	cartilaginous fishes
crustaceans	other animals
molluscs	miscellaneous
worms	

Prey Species	COMMON	LATIN	COUNT	PERCENT
0491	sand lances	Ammodytes spp.	1	0.54
0507	common burrower amphipod	Leptocheirus plumulosus	1	0.54
0636	four-eyed amphipods (Ampelisca spp.)	Ampelisca spp.	1	0.54
0020	American lobster	Homarus americanus	1	0.54
0612	lady crab	Ovalipes ocellatus	1	0.54
0617	acadian hermit crab	Pagurus acadianus	1	0.54
0679	bristled longbeak	Dichelopandalus leptocerus	1	0.54
7582	flat-clawed hermit crab	Pagurus pollicaris	1	0.54
1025	isopod (Politolana concharum)	Politolana concharum	1	0.54
0790	jackknife clams (razor clams)	Solenioidea	1	0.54
0816	Atlantic jackknife clam	Ensis directus	1	0.54
0826	blood ark	Anadara ovalis	1	0.54
0885	false angel wing	Petricolaria pholadiformes	1	0.54
0881	slippersnails	Crepidula spp.	1	0.54
0643	sea anemones	Actiniaria	1	0.54
0995	unidentified animal	unidentified animal	1	0.54
0648	sessile tunicates	Asciacea	1	0.54
0824	sea squirts (Molgula spp.)	Molgula spp.	1	0.54
0697	unidentified bloodworm	Glycera spp.	1	0.54
0764	polychaete (Pherusa affinis)	Pherusa affinis	1	0.54
0883	unidentified leech	Hirudinea	1	0.54
0892	worm tubes	worm tubes	1	0.54

# Scophthalmus aquosus

VIMSCODE: 0063

Common Name: Windowpane

Stomachs Processed (Full Workup Samples): 654

% Empty Stomachs or No/Improper Sample: 10%

bony fishes	cartilaginous fishes
crustaceans	other animals
molluscs	miscellaneous
worms	

Prey Species	COMMON	LATIN	COUNT	PERCENT
0574	unidentified mysid	Mysidae	173	38.79
0604	sand shrimp	Crangon septemspinosa	62	13.90
0699	mysid	Neomysis americana	56	12.56
0740	mysid (Americamysis bigelowi)	Mysidopsis bigelowi	46	10.31
0103	bay anchovy	Anchoa mitchilli	11	2.47
5000	unidentified fish	Actinopterygii	11	2.47
0708	unidentified material	unidentified material	10	2.24
0539	cumacean (Oxyurostylis smithi)	Oxyurostylis smithi	7	1.57
0636	four-eyed amphipods (Ampelisca spp.)	Ampelisca spp.	6	1.35
0671	amphipod (Corophium spp.)	Corophium spp.	6	1.35
5001	unidentified shrimp	Decapoda	6	1.35
5031	rock	rock	6	1.35
0507	common burrower amphipod	Leptocheirus plumulosus	5	1.12
0673	unidentified crustacean	Crustacea	4	0.90
0518	calanoid copepod	calanoid copepod	3	0.67
5039	unidentified clam	Bivalvia	3	0.67
1028	longfin inshore squid	Loligo pealeii	3	0.67
0841	unidentified amphipod	Amphipoda spp.	2	0.45
0595	roughneck shrimp	Rimapenaeus constrictus	2	0.45
0973	unidentified crab zoea	Decapoda	2	0.45
0705	shell	shell	2	0.45
0704	shark eye moon snail	Polinices duplicatus	2	0.45
0995	unidentified animal	unidentified animal	2	0.45
0053	codlings	Urophycis spp.	1	0.22
0070	spotted hake	Urophycis regia	1	0.22
0102	striped anchovy	Anchoa hepsetus	1	0.22
5002	unidentified flatfish	Pleuronectiformes	1	0.22
0579	Erichthonius brasiliensis	Erichthonius brasiliensis	1	0.22
0952	berg-salmon gill worm	Lernaenicus radiatus	1	0.22
0679	bristled longbeak	Dichelopandalus leptocerus	1	0.22
5011	unidentified shrimp zoea	Decapoda	1	0.22
5035	unidentified crab	Decapoda	1	0.22
5032	animal tubes	animal tubes	1	0.22
5037	sand	sand	1	0.22
5006	vegetation	Plantae	1	0.22
0742	New England dog whelk	Nassarius trivittatus	1	0.22
0800	moon snail	Polinices heros	1	0.22
0505	unidentified insect	Insecta	1	0.22
0775	unidentified polychaete	Polychaeta	1	0.22

# *Mustelis canis*

VIMSCODE: 0163

Common Name: Smooth Dogfish

Stomachs Processed (Full Workup Samples): 2,586

% Empty Stomachs or No/Improper Sample: 1%

bony fishes	cartilaginous fishes
crustaceans	other animals
molluscs	miscellaneous
worms	

Prey Species	COMMON	LATIN	COUNT	PERCENT
0656	Atlantic rock crab	Cancer irroratus	1494	57.77
5012	crab parts	crab parts	937	36.23
5000	unidentified fish	Actinopterygii	491	18.99
7582	flat-clawed hermit crab	Pagurus pollicaris	442	17.09
0697	unidentified bloodworm	Glycera spp.	313	12.10
5016	unidentified rock crab	Cancer spp.	304	11.76
0816	Atlantic jackknife clam	Ensis directus	285	11.02
0758	unidentified right-hand hermit crab	Pagurus spp.	245	9.47
0790	jackknife clams (razor clams)	Solenoida	242	9.36
0612	lady crab	Ovalipes ocellatus	237	9.16
0775	unidentified polychaete	Polychaeta	223	8.62
5026	unidentified spider crab	Libinia spp.	171	6.61
0709	unidentified mollusc meat	Mollusca	157	6.07
7581	long-clawed hermit crab	Pagurus longicarpus	156	6.03
0870	mottled purse crab	Persephona mediterranea	127	4.91
5035	unidentified crab	Decapoda	126	4.87
0708	unidentified material	unidentified material	123	4.76
1028	longfin inshore squid	Loligo pealeii	116	4.49
0603	horseshoe crab	Limulus polyphemus	77	2.98
0037	Atlantic menhaden	Brevoortia tyrannus	76	2.94
0103	bay anchovy	Anchoa mitchilli	76	2.94
0754	polychaete ( <i>Ophelia denticulata</i> )	<i>Ophelia denticulata</i>	72	2.78
0600	jonah crab	Cancer borealis	65	2.51
5006	vegetation	Plantae	64	2.47
0621	mantis shrimp	Squilla empusa	59	2.28
0605	common spider crab	Libinia emarginata	53	2.05
0604	sand shrimp	Crangon septemspinosa	45	1.74
0849	purse crab	Persephona punctata	41	1.59
0004	butterfish	Peprilus triacanthus	36	1.39
0007	weakfish	Cynoscion regalis	36	1.39
0800	moon snail	Polinices heros	35	1.35
0884	unidentified drill or snail	Gastropoda	31	1.20
0629	unidentified worm	worm	31	1.20
0594	unidentified mud crab	Xanthidae	30	1.16
5039	unidentified clam	Bivalvia	28	1.08
0865	calico box crab	Hepatus epheliticus	24	0.93
0995	unidentified animal	unidentified animal	24	0.93
5031	rock	rock	23	0.89
0742	New England dog whelk	Nassarius trivittatus	23	0.89

bony fishes	cartilaginous fishes
crustaceans	other animals
molluscs	miscellaneous
worms	

Prey Species	COMMON	LATIN	COUNT	PERCENT
0500	short-browed mud shrimp	<i>Gilvossius setimanus</i>	22	0.85
0839	swimming crabs	Portunids	21	0.81
0916	unidentified herring	Clupeidae	20	0.77
0552	smooth mud crab	<i>Hexapanopeus angustifrons</i>	20	0.77
0001	scup	<i>Stenotomus chrysops</i>	19	0.73
0504	wood	Plantae	19	0.73
0491	sand lances	<i>Ammodytes</i> spp.	18	0.70
0673	unidentified crustacean	Crustacea	18	0.70
5001	unidentified shrimp	Decapoda	18	0.70
1025	isopod ( <i>Politolana concharum</i> )	<i>Politolana concharum</i>	18	0.70
5029	eelgrass	<i>Zostera marina</i>	18	0.70
0399	common anchovies	<i>Anchoa</i> spp.	17	0.66
0590	flat-browed mud shrimp	<i>Upogebia affinis</i>	17	0.66
0595	roughneck shrimp	<i>Rimapenaeus constrictus</i>	17	0.66
0578	swimming crab ( <i>Portunus</i> spp.)	<i>Portunus</i> spp.	16	0.62
0703	unidentified hydroid	Cnidaria	15	0.58
5002	unidentified flatfish	Pleuronectiformes	14	0.54
0636	four-eyed amphipods ( <i>Ampelisca</i> spp.)	<i>Ampelisca</i> spp.	14	0.54
0102	striped anchovy	<i>Anchoa hepsetus</i>	13	0.50
0498	unidentified bivalve	Bivalvia	13	0.50
0005	Atlantic croaker	<i>Micropogonias undulatus</i>	11	0.43
0625	square-eyed mole crab	<i>Lepidopa websteri</i>	10	0.39
0864	Atlantic sand crab	<i>Emerita talpoida</i>	10	0.39
0705	shell	shell	10	0.39
0020	American lobster	<i>Homarus americanus</i>	9	0.35
0624	olivepit porcelain crab	<i>Euceramus praelongus</i>	9	0.35
0657	unidentified isopod	Isopoda spp.	9	0.35
0033	spot	<i>Leiostomus xanthurus</i>	8	0.31
0917	unidentified hermit crab	Paguroidea	8	0.31
0888	stout tagelus	<i>Tagelus plebeius</i>	8	0.31
0559	isopod ( <i>Sphaeroma quadridentatum</i> )	<i>Sphaeroma quadridentatum</i>	7	0.27
0478	macro algae	macro algae	7	0.27
0003	summer flounder	<i>Paralichthys dentatus</i>	6	0.23
0053	codlings	<i>Urophycis</i> spp.	6	0.23
0833	unidentified pea crab	<i>Pinnixa</i> spp.	6	0.23
0802	blue mussel	<i>Mytilus edulis</i>	6	0.23
5003	unidentified clam siphon	Bivalvia	6	0.23
0764	polychaete ( <i>Pherusa affinis</i> )	<i>Pherusa affinis</i>	6	0.23
0002	black seabass	<i>Centropristis striata</i>	5	0.19
0009	bluefish	<i>Pomatomus saltatrix</i>	5	0.19
0023	searobins ( <i>Prionotus</i> spp.)	<i>Prionotus</i> spp.	5	0.19
0529	fish scales	fish scales	5	0.19
0679	bristled longbeak	<i>Dichelopandalus leptocerus</i>	5	0.19
0508	isopod	<i>Ancinus depressus</i>	5	0.19
0801	soft shell clam	<i>Mya arenaria</i>	5	0.19
0510	clam worm ( <i>Nereis</i> spp.)	<i>Nereis</i> spp.	5	0.19
0070	spotted hake	<i>Urophycis regia</i>	4	0.15

bony fishes	cartilaginous fishes
crustaceans	other animals
molluscs	miscellaneous
worms	

Prey Species	COMMON	LATIN	COUNT	PERCENT
0129	lined seahorse	Hippocampus erectus	4	0.15
0181	unidentified ocellate skates	Raja spp.	4	0.15
0507	common burrower amphipod	Leptocheirus plumulosus	4	0.15
0607	iridescent swimming crab	Portunus gibbesii	4	0.15
0611	coarse-hand lady crab	Ovalipes stephensoni	4	0.15
0848	speckled crab	Arenaeus cribrarius	4	0.15
0861	crabs - Callinectes spp.	Callinectes spp.	4	0.15
0513	slender isopod	Cyathura polita	4	0.15
5032	animal tubes	animal tubes	4	0.15
0879	northern shortfin squid	Illex illecebrosus	4	0.15
0651	unidentified sea stars	Asteroidea	4	0.15
0006	silver hake	Merluccius bilinearis	3	0.12
0013	kingfish (Menticirrhus spp.)	Menticirrhus spp.	3	0.12
0031	striped bass	Morone saxatilis	3	0.12
0671	amphipod (Corophium spp.)	Corophium spp.	3	0.12
0593	six spine spider crab	Libinia dubia	3	0.12
6142	blue crab, juvenile female	Callinectes sapidus, juv fem	3	0.12
0925	Erichsonella attenuata	Erichsonella attenuata	3	0.12
0881	slippersnails	Crepidula spp.	3	0.12
5036	unidentified mollusc	Mollusca	3	0.12
0702	sand dollar	Echinarachnius parma	3	0.12
0892	worm tubes	worm tubes	3	0.12
0015	red hake	Urophycis chuss	2	0.08
0029	Atlantic herring	Clupea harengus	2	0.08
0071	northern searobin	Prionotus carolinus	2	0.08
0079	smooth puffer	Lagocephalus laevigatus	2	0.08
0213	silver perch	Bairdiella chrysoura	2	0.08
0236	smallmouth flounder	Etropus microstomus	2	0.08
0812	gammarid amphipod (Rhepoxynius epistomus)	Rhepoxynius epistomus	2	0.08
1008	amphipod (Haustoriidae)	Haustoriidae	2	0.08
0565	unidentified cyclopoid copepod	Cyclopoid copepod	2	0.08
0960	unidentified mantis shrimp (Squilla)	Squilla spp.	2	0.08
0617	acadian hermit crab	Pagurus acadianus	2	0.08
1010	unidentified mud shrimp	Thalassinidea	2	0.08
5023	pea crab (Pinnixa cylindrica)	Pinnixa cylindrica	2	0.08
5941	flatback mud crab	Eurypanopeus depressus	2	0.08
1002	unidentified seagrasses	Zostera/Ruppia spp.	2	0.08
0091	Atlantic surfclam	Spisula solidissima	2	0.08
1020	tagelus clams	Tagelus spp.	2	0.08
0495	lancelets	Branchiostoma spp.	2	0.08
0645	sea mouse	Aphrodita hastata	2	0.08
0798	polychaete (Terebellidae)	Terebellidae	2	0.08
0028	hickory shad	Alosa mediocris	1	0.04
0044	winter flounder	Pseudopleuronectes americanus	1	0.04
0072	striped searobin	Prionotus evolans	1	0.04
0148	rough silverside	Membras martinica	1	0.04
0190	conger eel	Conger oceanicus	1	0.04

bony fishes	cartilaginous fishes
crustaceans	other animals
molluscs	miscellaneous
worms	

Prey Species	COMMON	LATIN	COUNT	PERCENT
0218	cunner	Tautoglabrus adspersus	1	0.04
0229	striped cusk-eel	Ophidion marginatum	1	0.04
0281	unidentified gobies	Gobiidae	1	0.04
0475	paperbone fish	Scopelosaurus maui	1	0.04
0924	Belonidae	Belonidae	1	0.04
0963	unidentified croaker/drum	Sciaenidae	1	0.04
0170	clearnose skate	Raja eglanteria	1	0.04
0637	four-eyed amphipods ( <i>Ampelisca vadorum</i> )	<i>Ampelisca vadorum</i>	1	0.04
0516	copepod (Labidocera)	Labidocera spp.	1	0.04
0518	calanoid copepod	calanoid copepod	1	0.04
0699	mysid	Neomysis americana	1	0.04
1019	copepod ( <i>Lernaeenicus</i> spp.)	<i>Lernaeenicus</i> spp.	1	0.04
0502	redhair swimming crab	<i>Portunus ordwayi</i>	1	0.04
0547	tube pea crab	<i>Pinnixa chaetopterana</i>	1	0.04
0601	eastern tube crab	<i>Polyonyx gibbesi</i>	1	0.04
0614	blue crab, sex unknown	<i>Callinectes sapidus</i>	1	0.04
0620	grass shrimp	<i>Palaemonetes</i> spp.	1	0.04
0675	unidentified decapod (crabs, shrimp, lobsters)	Decapoda	1	0.04
0873	spotted porcelain crab	<i>Porcellana sayana</i>	1	0.04
0933	unidentified ghost shrimps	Callianassidae	1	0.04
6143	blue crab, adult female	<i>Callinectes sapidus</i> , adult fem	1	0.04
6220	unidentified penaeid shrimp	Penaeidae	1	0.04
0526	isopod ( <i>Chiridotea</i> spp.)	<i>Chiridotea</i> spp.	1	0.04
0683	isopod ( <i>Livoneca redmanii</i> )	<i>Livoneca redmanii</i>	1	0.04
0685	isopod ( <i>Edotia montosa</i> )	<i>Edotia montosa</i>	1	0.04
0918	isopods ( <i>Edotia</i> )	<i>Edotia</i> spp.	1	0.04
0894	coal	coal	1	0.04
0967	animal fur	Mammalia	1	0.04
0906	unidentified scallop	Pectinidae	1	0.04
5013	amethyst gemclam	<i>Gemma gemma</i>	1	0.04
0017	Loligo squid	<i>Loligo</i> spp.	1	0.04
0048	unidentified whelk	Melongenidae	1	0.04
0704	shark eye moon snail	<i>Polinices duplicatus</i>	1	0.04
0773	seaboard marginella	<i>Prunum roscidum</i>	1	0.04
5028	barrel bubble	<i>Acteocina canaliculata</i>	1	0.04
0961	egg case	egg case	1	0.04
0970	eggs	eggs	1	0.04
0496	unidentified echinoderm	Echinodermata	1	0.04
0650	unidentified Asteroiid sea star	Asteriidae	1	0.04
0700	forbes common sea star	<i>Asterias forbesi</i>	1	0.04
0512	midge flies	Chironomidae	1	0.04
0856	sea nettle	<i>Chrysaora quinquecirrha</i>	1	0.04
0548	unidentified sponge	Porifera	1	0.04
0668	bamboo worm	<i>Clymenella torquata</i>	1	0.04
5009	milky ribbon worm	<i>Cerebratulus lacteus</i>	1	0.04

# *Squalus acanthias*

VIMSCODE: 0167

Common Name: Spiny Dogfish

Stomachs Processed (Full Workup Samples): 1,311

% Empty Stomachs or No/Improper Sample: 6%

bony fishes	cartilaginous fishes
crustaceans	other animals
molluscs	miscellaneous
worms	

Prey Species	COMMON	LATIN	COUNT	PERCENT
5000	unidentified fish	Actinopterygii	371	28.30
1028	longfin inshore squid	Loligo pealeii	303	23.11
0004	butterfish	Peprilus triacanthus	192	14.65
0103	bay anchovy	Anchoa mitchilli	150	11.44
0037	Atlantic menhaden	Brevoortia tyrannus	136	10.37
0708	unidentified material	unidentified material	81	6.18
0001	scup	Stenotomus chrysops	80	6.10
0656	Atlantic rock crab	Cancer irroratus	61	4.65
0697	unidentified bloodworm	Glycera spp.	60	4.58
0709	unidentified mollusc meat	Mollusca	50	3.81
5002	unidentified flatfish	Pleuronectiformes	35	2.67
0070	spotted hake	Urophycis regia	32	2.44
0031	striped bass	Morone saxatilis	29	2.21
0916	unidentified herring	Clupeidae	27	2.06
5012	crab parts	crab parts	26	1.98
0029	Atlantic herring	Clupea harengus	24	1.83
0033	spot	Leiostomus xanthurus	24	1.83
5035	unidentified crab	Decapoda	24	1.83
0775	unidentified polychaete	Polychaeta	24	1.83
0007	weakfish	Cynoscion regalis	23	1.75
0027	blueback herring	Alosa aestivalis	19	1.45
0600	jonah crab	Cancer borealis	19	1.45
0498	unidentified bivalve	Bivalvia	19	1.45
0790	jackknife clams (razor clams)	Solenioidea	19	1.45
5016	unidentified rock crab	Cancer spp.	18	1.37
0800	moon snail	Polinices heros	17	1.30
0005	Atlantic croaker	Micropogonias undulatus	16	1.22
0758	unidentified right-hand hermit crab	Pagurus spp.	15	1.14
0816	Atlantic jackknife clam	Ensis directus	15	1.14
0053	codlings	Urophycis spp.	14	1.07
0006	silver hake	Merluccius bilinearis	13	0.99
5039	unidentified clam	Bivalvia	13	0.99
0725	Atlantic brief squid	Lolliguncula brevis	13	0.99
0102	striped anchovy	Anchoa hepsetus	12	0.92
0884	unidentified drill or snail	Gastropoda	11	0.84
0604	sand shrimp	Crangon septemspinosa	10	0.76
5003	unidentified clam siphon	Bivalvia	10	0.76
0003	summer flounder	Paralichthys dentatus	9	0.69
0190	conger eel	Conger oceanicus	9	0.69

bony fishes	cartilaginous fishes
crustaceans	other animals
molluscs	miscellaneous
worms	

Prey Species	COMMON	LATIN	COUNT	PERCENT
0995	unidentified animal	unidentified animal	9	0.69
0970	eggs	eggs	8	0.61
0002	black seabass	Centropristis striata	7	0.53
0028	hickory shad	Alosa mediocris	7	0.53
0491	sand lances	Ammodytes spp.	7	0.53
0595	roughneck shrimp	Rimapenaeus constrictus	7	0.53
7582	flat-clawed hermit crab	Pagurus pollicaris	7	0.53
0399	common anchovies	Anchoa spp.	6	0.46
0181	unidentified ocellate skates	Raja spp.	6	0.46
0824	sea squirts (Molgula spp.)	Molgula spp.	6	0.46
0152	blackcheek tonguefish	Symphurus plagiusa	5	0.38
0529	fish scales	fish scales	5	0.38
0500	short-browed mud shrimp	Gilvossius setimanus	5	0.38
0705	shell	shell	5	0.38
0754	polychaete (Ophelia denticulata)	Ophelia denticulata	5	0.38
0023	searobins (Prionotus spp.)	Prionotus spp.	4	0.31
0063	windowpane	Scophthalmus aquosus	4	0.31
0071	northern searobin	Prionotus carolinus	4	0.31
0256	unidentified river herrings	Alosa spp.	4	0.31
5031	rock	rock	4	0.31
0801	soft shell clam	Mya arenaria	4	0.31
0643	sea anemones	Actinaria	4	0.31
0229	striped cusk-eel	Ophidion marginatum	3	0.23
0621	mantis shrimp	Squilla empusa	3	0.23
0673	unidentified crustacean	Crustacea	3	0.23
1010	unidentified mud shrimp	Thalassinidea	3	0.23
5001	unidentified shrimp	Decapoda	3	0.23
0742	New England dog whelk	Nassarius trivittatus	3	0.23
0828	unidentified sea cucumbers	Holothuroidea	3	0.23
0629	unidentified worm	worm	3	0.23
0013	kingfish (Menticirrhus spp.)	Menticirrhus spp.	2	0.15
0026	alewife	Alosa pseudoharengus	2	0.15
0030	American shad	Alosa sapidissima	2	0.15
0043	Atlantic mackerel	Scomber scombrus	2	0.15
0044	winter flounder	Pseudopleuronectes americanus	2	0.15
0076	round herring	Etrumeus teres	2	0.15
0565	unidentified cyclopoid copepod	Cyclopoid copepod	2	0.15
7581	long-clawed hermit crab	Pagurus longicarpus	2	0.15
1025	isopod (Politolana concharum)	Politolana concharum	2	0.15
0504	wood	Plantae	2	0.15
0585	mud	Miscellaneous	2	0.15
5007	sea squirt (Molgula manhattensis)	Molgula manhattensis	2	0.15
0009	bluefish	Pomatomus saltatrix	1	0.08
0015	red hake	Urophycis chuss	1	0.08
0032	white perch	Morone americana	1	0.08
0034	black drum	Pogonius cromis	1	0.08
0050	northern puffer	Spherooides maculatus	1	0.08



bony fishes	cartilaginous fishes
crustaceans	other animals
molluscs	miscellaneous
worms	

Prey Species	COMMON	LATIN	COUNT	PERCENT
0055	tautog	Tautoga onitis	1	0.08
0087	unidentified sea basses	Serranidae	1	0.08
0189	inshore lizardfish	Synodus foetens	1	0.08
0196	Atlantic needlefish	Strongylura marina	1	0.08
0213	silver perch	Bairdiella chrysoura	1	0.08
0218	cunner	Tautogolabrus adspersus	1	0.08
0219	Atlantic cutlassfish	Trichiurus lepturus	1	0.08
0339	bigeye	Priacanthus arenatus	1	0.08
0167	spiny dogfish	Squalus acanthias	1	0.08
0171	little skate	Raja erinacea	1	0.08
0636	four-eyed amphipods (Ampelisca spp.)	Ampelisca spp.	1	0.08
0738	red-eyed amphipod	Monoculodes edwardsi	1	0.08
0020	American lobster	Homarus americanus	1	0.08
0590	flat-browed mud shrimp	Upogebia affinis	1	0.08
0611	coarse-hand lady crab	Ovalipes stephensoni	1	0.08
0653	burrowing shrimp	Axius serratus	1	0.08
0679	bristled longbeak	Dichelopandalus leptocerus	1	0.08
0657	unidentified isopod	Isopoda spp.	1	0.08
0683	isopod (Livoneca redmanii)	Livoneca redmanii	1	0.08
5020	mound back isopod	Edotia triloba	1	0.08
0542	trash, plastic	plastic trash	1	0.08
0930	fishing lure	fishing lure	1	0.08
5033	unidentified meat	unidentified meat	1	0.08
5006	vegetation	Plantae	1	0.08
5029	eelgrass	Zostera marina	1	0.08
0022	sea scallop	Placopecten magellanicus	1	0.08
0017	Loligo squid	Loligo spp.	1	0.08
5025	lunar dove snail	Mitrella lunata	1	0.08
0702	sand dollar	Echinarachnius parma	1	0.08
0703	unidentified hydroid	Cnidaria	1	0.08
0774	unidentified comb jelly	Ctenophora	1	0.08
0900	unidentified jellyfish	Cnidaria	1	0.08
0510	clam worm (Nereis spp.)	Nereis spp.	1	0.08
0631	polychaete (Aglaophamus circinata)	Aglaophamus circinata	1	0.08
0764	polychaete (Pherusa affinis)	Pherusa affinis	1	0.08
0892	worm tubes	worm tubes	1	0.08
0901	nematode	Nematoda	1	0.08

# *Raja eglanteria*

VIMSCODE: 0170

Common Name: Cleanose Skate

Stomachs Processed (Full Workup Samples): 3,324

% Empty Stomachs or No/Improper Sample: 6%

bony fishes	cartilaginous fishes
crustaceans	other animals
molluscs	miscellaneous
worms	

Prey Species	COMMON	LATIN	COUNT	PERCENT
0656	Atlantic rock crab	Cancer irroratus	781	23.50
0604	sand shrimp	Crangon septemspinosa	526	15.82
5000	unidentified fish	Actinopterygii	471	14.17
5012	crab parts	crab parts	395	11.88
0612	lady crab	Ovalipes ocellatus	353	10.62
0816	Atlantic jackknife clam	Ensis directus	307	9.24
0758	unidentified right-hand hermit crab	Pagurus spp.	232	6.98
5016	unidentified rock crab	Cancer spp.	181	5.45
5026	unidentified spider crab	Libinia spp.	177	5.32
5035	unidentified crab	Decapoda	175	5.26
0790	jackknife clams (razor clams)	Solenioidea	169	5.08
0595	roughneck shrimp	Rimapenaeus constrictus	150	4.51
0103	bay anchovy	Anchoa mitchilli	146	4.39
7581	long-clawed hermit crab	Pagurus longicarpus	144	4.33
7582	flat-clawed hermit crab	Pagurus pollicaris	134	4.03
0491	sand lances	Ammodytes spp.	128	3.85
1028	longfin inshore squid	Loligo pealeii	121	3.64
0102	striped anchovy	Anchoa hepsetus	104	3.13
0005	Atlantic croaker	Micropogonias undulatus	78	2.35
5001	unidentified shrimp	Decapoda	76	2.29
0775	unidentified polychaete	Polychaeta	74	2.23
0004	butterfish	Peprilus triacanthus	73	2.20
0607	iridescent swimming crab	Portunus gibbesii	66	1.99
0709	unidentified mollusc meat	Mollusca	62	1.87
0495	lancelets	Branchiostoma spp.	57	1.71
0552	smooth mud crab	Hexapanopeus angustifrons	52	1.56
0605	common spider crab	Libinia emarginata	51	1.53
0578	swimming crab (Portunus spp.)	Portunus spp.	49	1.47
0033	spot	Leiostomus xanthurus	47	1.41
0007	weakfish	Cynoscion regalis	39	1.17
5002	unidentified flatfish	Pleuronectiformes	37	1.11
0621	mantis shrimp	Squilla empusa	37	1.11
0673	unidentified crustacean	Crustacea	37	1.11
0708	unidentified material	unidentified material	37	1.11
0839	swimming crabs	Portunids	34	1.02
0594	unidentified mud crab	Xanthidae	33	0.99
0636	four-eyed amphipods (Ampelisca spp.)	Ampelisca spp.	31	0.93
0500	short-browed mud shrimp	Gilvossius setimanus	31	0.93
0575	sharp-headed nemertean	Zygeupolia rubens	30	0.90

bony fishes	cartilaginous fishes
crustaceans	other animals
molluscs	miscellaneous
worms	

Prey Species	COMMON	LATIN	COUNT	PERCENT
0754	polychaete ( <i>Ophelia denticulata</i> )	<i>Ophelia denticulata</i>	30	0.90
0699	mysid	<i>Neomysis americana</i>	28	0.84
0001	scup	<i>Stenotomus chrysops</i>	25	0.75
0053	codlings	<i>Urophycis</i> spp.	25	0.75
0697	unidentified bloodworm	<i>Glycera</i> spp.	25	0.75
0023	searobins ( <i>Prionotus</i> spp.)	<i>Prionotus</i> spp.	22	0.66
0037	Atlantic menhaden	<i>Brevoortia tyrannus</i>	20	0.60
0070	spotted hake	<i>Urophycis regia</i>	20	0.60
0508	isopod	<i>Ancinus depressus</i>	19	0.57
5031	rock	rock	17	0.51
0236	smallmouth flounder	<i>Etropus microstomus</i>	16	0.48
0574	unidentified mysid	Mysidae	16	0.48
0875	sargassum swimming crab	<i>Portunus sayi</i>	15	0.45
0152	blackcheek tonguefish	<i>Symphurus plagiusa</i>	14	0.42
0399	common anchovies	<i>Anchoa</i> spp.	12	0.36
0888	stout tagelus	<i>Tagelus plebeius</i>	11	0.33
5039	unidentified clam	Bivalvia	11	0.33
0213	silver perch	<i>Bairdiella chrysoura</i>	10	0.30
0916	unidentified herring	Clupeidae	10	0.30
0738	red-eyed amphipod	<i>Monoculodes edwardsi</i>	10	0.30
0861	crabs - <i>Callinectes</i> spp.	<i>Callinectes</i> spp.	10	0.30
0281	unidentified gobies	Gobiidae	9	0.27
0917	unidentified hermit crab	Paguroidea	9	0.27
5032	animal tubes	animal tubes	9	0.27
0229	striped cusk-eel	<i>Ophidion marginatum</i>	8	0.24
0600	jonah crab	<i>Cancer borealis</i>	8	0.24
0624	olivepit porcelain crab	<i>Eucерamus praelongus</i>	8	0.24
0625	square-eyed mole crab	<i>Lepidopa websteri</i>	8	0.24
1010	unidentified mud shrimp	Thalassinidea	8	0.24
0559	isopod ( <i>Sphaeroma quadridentatum</i> )	<i>Sphaeroma quadridentatum</i>	8	0.24
0629	unidentified worm	worm	8	0.24
0071	northern searobin	<i>Prionotus carolinus</i>	7	0.21
0614	blue crab, sex unknown	<i>Callinectes sapidus</i>	7	0.21
0705	shell	shell	7	0.21
5003	unidentified clam siphon	Bivalvia	7	0.21
0742	New England dog whelk	<i>Nassarius trivittatus</i>	7	0.21
0029	Atlantic herring	<i>Clupea harengus</i>	6	0.18
0156	unidentified pipefishes	<i>Syngnathus</i> spp.	6	0.18
0507	common burrower amphipod	<i>Leptocheirus plumulosus</i>	6	0.18
0865	calico box crab	<i>Hepatus epheliticus</i>	6	0.18
0657	unidentified isopod	Isopoda spp.	6	0.18
0802	blue mussel	<i>Mytilus edulis</i>	6	0.18
0884	unidentified drill or snail	Gastropoda	6	0.18
0995	unidentified animal	unidentified animal	6	0.18
0003	summer flounder	<i>Paralichthys dentatus</i>	5	0.15
0027	blueback herring	<i>Alosa aestivalis</i>	5	0.15
0841	unidentified amphipod	Amphipoda spp.	5	0.15

bony fishes	cartilaginous fishes
crustaceans	other animals
molluscs	miscellaneous
worms	

Prey Species	COMMON	LATIN	COUNT	PERCENT
0833	unidentified pea crab	Pinnixa spp.	5	0.15
0498	unidentified bivalve	Bivalvia	5	0.15
0006	silver hake	Merluccius bilinearis	4	0.12
0013	kingfish (Menticirrhus spp.)	Menticirrhus spp.	4	0.12
0015	red hake	Urophycis chuss	4	0.12
0181	unidentified ocellate skates	Raja spp.	4	0.12
0740	mysid (Americamysis bigelowi)	Mysidopsis bigelowi	4	0.12
0960	unidentified mantis shrimp (Squilla)	Squilla spp.	4	0.12
0863	shameface heart crab	Cryptosoma bairdii	4	0.12
0864	Atlantic sand crab	Emerita talpoida	4	0.12
1025	isopod (Politolana concharum)	Politolana concharum	4	0.12
0504	wood	Plantae	4	0.12
5006	vegetation	Plantae	4	0.12
5029	eelgrass	Zostera marina	4	0.12
0703	unidentified hydroid	Cnidaria	4	0.12
0892	worm tubes	worm tubes	4	0.12
0002	black seabass	Centropristis striata	3	0.09
0009	bluefish	Pomatomus saltatrix	3	0.09
0129	lined seahorse	Hippocampus erectus	3	0.09
0565	unidentified cyclopoid copepod	Cyclopoid copepod	3	0.09
0590	flat-browed mud shrimp	Upogebia affinis	3	0.09
0848	speckled crab	Arenaeus cribrarius	3	0.09
0513	slender isopod	Cyathura polita	3	0.09
5037	sand	sand	3	0.09
0034	black drum	Pogonius cromis	2	0.06
0050	northern puffer	Sphoeroides maculatus	2	0.06
0937	silver anchovy	Engraulis eurystole	2	0.06
0963	unidentified croaker/drum	Sciaenidae	2	0.06
0992	Spanish sardine	Sardinella aurita	2	0.06
1023	left-eye flounders (Etropus)	Etropus spp.	2	0.06
0516	copepod (Labidocera)	Labidocera spp.	2	0.06
5038	unidentified copepod (Copepoda)	Copepoda	2	0.06
0593	six spine spider crab	Libinia dubia	2	0.06
0617	acadian hermit crab	Pagurus acadianus	2	0.06
0622	brown shrimp	Farfantepenaeus aztecus	2	0.06
0623	shrimp (Acetes spp.)	Acetes spp.	2	0.06
0679	bristled longbeak	Dichelopandalus leptocerus	2	0.06
0844	rock shrimp	Sicyonia brevirostris	2	0.06
0849	purse crab	Persephona punctata	2	0.06
0870	mottled purse crab	Persephona mediterranea	2	0.06
5023	pea crab (Pinnixa cylindrica)	Pinnixa cylindrica	2	0.06
5942	Atlantic mud crab	Panopeus herbstii	2	0.06
6220	unidentified penaeid shrimp	Penaeidae	2	0.06
0959	lazy fish lice	Argulus spp.	2	0.06
0930	fishing lure	fishing lure	2	0.06
0661	unidentified cephalopoda	Cephalopoda	2	0.06
0881	slippersnails	Crepidula spp.	2	0.06

bony fishes	cartilaginous fishes
crustaceans	other animals
molluscs	miscellaneous
worms	

Prey Species	COMMON	LATIN	COUNT	PERCENT
0814	mushroom cap	Rhopilema verrilli	2	0.06
0012	white hake	Urophycis tenuis	1	0.03
0038	Atlantic thread herring	Opisthonema oglinum	1	0.03
0060	American eel	Anguilla rostrata	1	0.03
0063	windowpane	Scophthalmus aquosus	1	0.03
0064	Atlantic spadefish	Chaetodipterus faber	1	0.03
0072	striped searobin	Prionotus evolans	1	0.03
0076	round herring	Etrumeus teres	1	0.03
0079	smooth puffer	Lagocephalus laevigatus	1	0.03
0087	unidentified sea basses	Serranidae	1	0.03
0131	northern pipefish	Syngnathus fuscus	1	0.03
0190	conger eel	Conger oceanicus	1	0.03
0205	round scad	Decapterus punctatus	1	0.03
0207	lookdown	Selene vomer	1	0.03
0211	Atlantic moonfish	Selene setapinnis	1	0.03
0256	unidentified river herrings	Alosa spp.	1	0.03
0529	fish scales	fish scales	1	0.03
0581	naked gobies	Gobiosoma spp.	1	0.03
0909	houndfish	Tylosurus crocodilus	1	0.03
0924	Belonidae	Belonidae	1	0.03
0178	unidentified stingray (Dasyatis spp.)	Dasyatis spp.	1	0.03
5034	shark tooth	shark tooth	1	0.03
0646	amphipod (Argissa hamatipes)	Argissa hamatipes	1	0.03
0671	amphipod (Corophium spp.)	Corophium spp.	1	0.03
0812	gammarid amphipod (Rhepoxynius epistomus)	Rhepoxynius epistomus	1	0.03
0537	duck barnacle	Lepas anatifera	1	0.03
0674	unidentified cumacean	Cumacea	1	0.03
0952	berg-salmon gill worm	Lernaenicus radiatus	1	0.03
1016	water fleas (Leptodora spp.)	Leptodora spp.	1	0.03
1018	chameleon shrimp	Praunus flexuosus	1	0.03
0545	blue crab megalopa	Callinectes spp.	1	0.03
0547	tube pea crab	Pinnixa chaetopterana	1	0.03
0577	night shrimp	Processa spp.	1	0.03
0596	pink shrimp	Farfantepenaeus duorarum	1	0.03
0602	unidentified squat lobster	Galatheididae	1	0.03
0611	coarse-hand lady crab	Ovalipes stephensoni	1	0.03
0620	grass shrimp	Palaemonetes spp.	1	0.03
0933	unidentified ghost shrimps	Callianassidae	1	0.03
5941	flatback mud crab	Eurypanopeus depressus	1	0.03
5944	Say mud crab	Dyspanopeus sayi	1	0.03
6141	blue crab, male	Callinectes sapidus, male	1	0.03
6142	blue crab, juvenile female	Callinectes sapidus, juv fem	1	0.03
0683	isopod (Livoneca redmanii)	Livoneca redmanii	1	0.03
0918	isopods (Edotia)	Edotia spp.	1	0.03
5020	mound back isopod	Edotia triloba	1	0.03
5033	unidentified meat	unidentified meat	1	0.03
0478	macro algae	macro algae	1	0.03

bony fishes	cartilaginous fishes
crustaceans	other animals
molluscs	miscellaneous
worms	

Prey Species	COMMON	LATIN	COUNT	PERCENT
0947	green jackknife clam	<i>Solen viridis</i>	1	0.03
0017	Loligo squid	<i>Loligo spp.</i>	1	0.03
0854	common Atlantic shore octopus	<i>Octopus vulgaris</i>	1	0.03
0800	moon snail	<i>Polinices heros</i>	1	0.03
5025	lunar dove snail	<i>Mitrella lunata</i>	1	0.03
0603	horseshoe crab	<i>Limulus polyphemus</i>	1	0.03
0522	biting midge	<i>Ceratopogonidae</i>	1	0.03
0510	clam worm ( <i>Nereis spp.</i> )	<i>Nereis spp.</i>	1	0.03
0695	bloodworm ( <i>Glycera dibranchiata</i> )	<i>Glycera dibranchiata</i>	1	0.03
0716	fifteen-scaled worm ( <i>Malmgreniella lunulata</i> )	<i>Malmgreniella lunulata</i>	1	0.03
0745	shimmy worms ( <i>Nephtys spp.</i> )	<i>Nephtys spp.</i>	1	0.03
0750	polychaete ( <i>Nicolea spp.</i> )	<i>Nicolea spp.</i>	1	0.03
0764	polychaete ( <i>Pherusa affinis</i> )	<i>Pherusa affinis</i>	1	0.03
0769	oyster worm ( <i>Anaitides groenlandica</i> )	<i>Anaitides groenlandica</i>	1	0.03

# *Raja erinacea*

VIMSCODE: 0171

Common Name: Little Skate

Stomachs Processed (Full Workup Samples): 3,373

% Empty Stomachs or No/Improper Sample: 4%

bony fishes	cartilaginous fishes
crustaceans	other animals
molluscs	miscellaneous
worms	

Prey Species	COMMON	LATIN	COUNT	PERCENT
0604	sand shrimp	Crangon septemspinosa	1177	34.89
0775	unidentified polychaete	Polychaeta	637	18.89
0656	Atlantic rock crab	Cancer irroratus	495	14.68
0507	common burrower amphipod	Leptocheirus plumulosus	456	13.52
7581	long-clawed hermit crab	Pagurus longicarpus	347	10.29
0758	unidentified right-hand hermit crab	Pagurus spp.	344	10.20
0636	four-eyed amphipods (Ampelisca spp.)	Ampelisca spp.	310	9.19
0697	unidentified bloodworm	Glycera spp.	304	9.01
0816	Atlantic jackknife clam	Ensis directus	294	8.72
5012	crab parts	crab parts	280	8.30
0790	jackknife clams (razor clams)	Solenioidea	207	6.14
1025	isopod (Politolana concharum)	Politolana concharum	206	6.11
5000	unidentified fish	Actinopterygii	186	5.51
0708	unidentified material	unidentified material	180	5.34
5016	unidentified rock crab	Cancer spp.	163	4.83
5035	unidentified crab	Decapoda	153	4.54
0671	amphipod (Corophium spp.)	Corophium spp.	149	4.42
7582	flat-clawed hermit crab	Pagurus pollicaris	133	3.94
0841	unidentified amphipod	Amphipoda spp.	115	3.41
0612	lady crab	Ovalipes ocellatus	113	3.35
0709	unidentified mollusc meat	Mollusca	90	2.67
0764	polychaete (Pherusa affinis)	Pherusa affinis	90	2.67
0738	red-eyed amphipod	Monoculodes edwardsi	88	2.61
0103	bay anchovy	Anchoa mitchilli	87	2.58
0754	polychaete (Ophelia denticulata)	Ophelia denticulata	85	2.52
5020	mound back isopod	Edotia triloba	77	2.28
0491	sand lances	Ammodytes spp.	70	2.08
5039	unidentified clam	Bivalvia	69	2.05
5026	unidentified spider crab	Libinia spp.	66	1.96
0539	cumacean (Oxyurostylis smithi)	Oxyurostylis smithi	64	1.90
0673	unidentified crustacean	Crustacea	56	1.66
0653	burrowing shrimp	Axius serratus	52	1.54
0694	amphipod (Gammarus spp.)	Gammarus spp.	50	1.48
0498	unidentified bivalve	Bivalvia	50	1.48
0621	mantis shrimp	Squilla empusa	48	1.42
1028	longfin inshore squid	Loligo pealeii	47	1.39
0495	lancelets	Branchiostoma spp.	43	1.27
0674	unidentified cumacean	Cumacea	42	1.25
0901	nematode	Nematoda	39	1.16

bony fishes	cartilaginous fishes
crustaceans	other animals
molluscs	miscellaneous
worms	

Prey Species	COMMON	LATIN	COUNT	PERCENT
0699	mysid	Neomysis americana	36	1.07
0629	unidentified worm	worm	36	1.07
0508	isopod	Ancinus depressus	35	1.04
1010	unidentified mud shrimp	Thalassinidea	34	1.01
0500	short-browed mud shrimp	Gilvossius setimanus	33	0.98
5001	unidentified shrimp	Decapoda	29	0.86
0595	roughneck shrimp	Rimapenaeus constrictus	28	0.83
5006	vegetation	Plantae	28	0.83
0892	worm tubes	worm tubes	25	0.74
0705	shell	shell	24	0.71
5003	unidentified clam siphon	Bivalvia	24	0.71
5032	animal tubes	animal tubes	23	0.68
0001	scup	Stenotomus chrysops	22	0.65
0547	tube pea crab	Pinnixa chaetoptera	21	0.62
0833	unidentified pea crab	Pinnixa spp.	19	0.56
0659	amphipod (Casco bigelowi)	Casco bigelowi	18	0.53
0657	unidentified isopod	Isopoda spp.	18	0.53
0574	unidentified mysid	Mysidae	16	0.47
0679	bristled longbeak	Dichelopandalus leptocerus	16	0.47
0668	bamboo worm	Clymenella torquata	16	0.47
0004	butterfish	Peprilus triacanthus	15	0.44
0102	striped anchovy	Anchoa hepsetus	15	0.44
0995	unidentified animal	unidentified animal	15	0.44
0504	wood	Plantae	14	0.42
0658	skeleton shrimp (Caprellidae)	Caprellidae spp	13	0.39
0624	olivepit porcelain crab	Euceramus praelongus	13	0.39
0590	flat-browed mud shrimp	Upogebia affinis	12	0.36
0617	acadian hermit crab	Pagurus acadianus	12	0.36
5037	sand	sand	12	0.36
5029	eelgrass	Zostera marina	12	0.36
0510	clam worm (Nereis spp.)	Nereis spp.	12	0.36
0798	polychaete (Terebellidae)	Terebellidae	12	0.36
0053	codlings	Urophycis spp.	11	0.33
0918	isopods (Edotia)	Edotia spp.	11	0.33
5031	rock	rock	10	0.30
0802	blue mussel	Mytilus edulis	10	0.30
0721	amphipod (Hippomedon serratus)	Hippomedon serratus	8	0.24
0006	silver hake	Merluccius bilinearis	7	0.21
0023	searobins (Prionotus spp.)	Prionotus spp.	7	0.21
0399	common anchovies	Anchoa spp.	7	0.21
1008	amphipod (Haustoriidae)	Haustoriidae	7	0.21
0605	common spider crab	Libinia emarginata	7	0.21
0917	unidentified hermit crab	Paguroidea	7	0.21
0663	isopod (Chiridotia tuftsii)	Chiridotia tuftsii	7	0.21
0478	macro algae	macro algae	7	0.21
0070	spotted hake	Urophycis regia	6	0.18
0281	unidentified gobies	Gobiidae	6	0.18



bony fishes	cartilaginous fishes
crustaceans	other animals
molluscs	miscellaneous
worms	

Prey Species	COMMON	LATIN	COUNT	PERCENT
5002	unidentified flatfish	Pleuronectiformes	6	0.18
1012	amphipod ( <i>Amphiporeia virginiana</i> )	<i>Amphiporeia virginiana</i>	6	0.18
0552	smooth mud crab	<i>Hexapanopeus angustifrons</i>	6	0.18
0594	unidentified mud crab	Xanthidae	6	0.18
0884	unidentified drill or snail	Gastropoda	6	0.18
0703	unidentified hydroid	Cnidaria	6	0.18
0645	sea mouse	<i>Aphrodita hastata</i>	6	0.18
0600	jonah crab	<i>Cancer borealis</i>	5	0.15
5023	pea crab ( <i>Pinnixa cylindrica</i> )	<i>Pinnixa cylindrica</i>	5	0.15
0665	isopod ( <i>Cirolana polita</i> )	<i>Cirolana polita</i>	5	0.15
0916	unidentified herring	Clupeidae	4	0.12
0643	sea anemones	Actiniaria	4	0.12
0740	mysid ( <i>Americamysis bigelowi</i> )	<i>Mysidopsis bigelowi</i>	4	0.12
0864	Atlantic sand crab	<i>Emerita talpoida</i>	4	0.12
0513	slender isopod	<i>Cyathura polita</i>	4	0.12
0559	isopod ( <i>Sphaeroma quadridentatum</i> )	<i>Sphaeroma quadridentatum</i>	4	0.12
0570	sand isopod	Chiridotea almyra	4	0.12
0960	unidentified mantis shrimp (Squillidae)	<i>Squilla</i> spp.	3	0.09
0824	sea squirts ( <i>Molgula</i> spp.)	<i>Molgula</i> spp.	3	0.09
0667	trumpet worm	<i>Pectinaria gouldi</i>	3	0.09
0005	Atlantic croaker	<i>Micropogonias undulatus</i>	2	0.06
0007	weakfish	<i>Cynoscion regalis</i>	2	0.06
0236	smallmouth flounder	<i>Etropus microstomus</i>	2	0.06
0529	fish scales	fish scales	2	0.06
0812	gammarid amphipod ( <i>Rhepoxynius epistomus</i> )	<i>Rhepoxynius epistomus</i>	2	0.06
0565	unidentified cyclopoid copepod	Cyclopoid copepod	2	0.06
0597	white shrimp	<i>Litopenaeus setiferus</i>	2	0.06
0623	shrimp ( <i>Acetes</i> spp.)	<i>Acetes</i> spp.	2	0.06
0839	swimming crabs	Portunids	2	0.06
0526	isopod ( <i>Chiridotea</i> spp.)	<i>Chiridotea</i> spp.	2	0.06
0942	isopod ( <i>Cymothoa</i> )	<i>Cymothoa</i>	2	0.06
1002	unidentified seagrasses	<i>Zostera/Ruppia</i> spp.	2	0.06
0888	stout tagelus	<i>Tagelus plebeius</i>	2	0.06
0970	eggs	eggs	2	0.06
0651	unidentified sea stars	Asteroidea	2	0.06
0512	midge flies	Chironomidae	2	0.06
0785	feather duster worms	Sabellidae	2	0.06
0027	blueback herring	<i>Alosa aestivalis</i>	1	0.03
0071	northern searobin	<i>Prionotus carolinus</i>	1	0.03
0072	striped searobin	<i>Prionotus evolans</i>	1	0.03
0129	lined seahorse	<i>Hippocampus erectus</i>	1	0.03
0937	silver anchovy	<i>Engraulis eurystole</i>	1	0.03
0579	<i>Erichthonius brasiliensis</i>	<i>Erichthonius brasiliensis</i>	1	0.03
0646	amphipod ( <i>Argissa hamatipes</i> )	<i>Argissa hamatipes</i>	1	0.03
0813	amphipod ( <i>Unciola irrorata</i> )	<i>Unciola irrorata</i>	1	0.03
1009	skeleton shrimp ( <i>Caprella</i> spp.)	<i>Caprella</i> spp.	1	0.03
0555	unidentified copepod	Copepoda	1	0.03

bony fishes	cartilaginous fishes
crustaceans	other animals
molluscs	miscellaneous
worms	

Prey Species	COMMON	LATIN	COUNT	PERCENT
0502	redhair swimming crab	Portunus ordwayi	1	0.03
0578	swimming crab (Portunus spp.)	Portunus spp.	1	0.03
0607	iridescent swimming crab	Portunus gibbesii	1	0.03
0620	grass shrimp	Palaemonetes spp.	1	0.03
0625	square-eyed mole crab	Lepidopa websteri	1	0.03
0675	unidentified decapod (crabs, shrimp, lobsters)	Decapoda	1	0.03
0756	arrow shrimp	Tozeuma carolinense	1	0.03
0757	hairy hermit crab	Pagurus arcuatus	1	0.03
0933	unidentified ghost shrimps	Callinassidae	1	0.03
6142	blue crab, juvenile female	Callinectes sapidus, juv fem	1	0.03
0683	isopod (Livoneca redmanii)	Livoneca redmanii	1	0.03
0684	isopod (Edotia acuta)	Edotia acuta	1	0.03
0912	isopod (Idotea spp.)	Idotea spp.	1	0.03
1022	isopod (Nerocila acuminata)	Nerocila acuminata	1	0.03
0585	mud	Miscellaneous	1	0.03
5004	gravel	gravel	1	0.03
0801	soft shell clam	Mya arenaria	1	0.03
1020	tagelus clams	Tagelus spp.	1	0.03
0704	shark eye moon snail	Polinices duplicatus	1	0.03
0800	moon snail	Polinices heros	1	0.03
1021	snail (Turbonilla spp.)	Turbonilla spp.	1	0.03
0496	unidentified echinoderm	Echinodermata	1	0.03
0652	brittle star (Axiognatus squamata)	Axiognatus squamata	1	0.03
0700	forbes common sea star	Asterias forbesi	1	0.03
0702	sand dollar	Echinarachnius parma	1	0.03
0755	unidentified brittle stars	Ophiuroidea	1	0.03
0599	loggerhead turtle	Caretta caretta	1	0.03
0664	fan worm	Chone infundibuliformis	1	0.03

# *Raja ocellata*

VIMSCODE: 0173

Common Name: Winter Skate

Stomachs Processed (Full Workup Samples): 2,413

% Empty Stomachs or No/Improper Sample: 6%

bony fishes	cartilaginous fishes
crustaceans	other animals
molluscs	miscellaneous
worms	

Prey Species	COMMON	LATIN	COUNT	PERCENT
0775	unidentified polychaete	Polychaeta	622	25.78
0604	sand shrimp	Crangon septemspinosa	592	24.53
0754	polychaete ( <i>Ophelia denticulata</i> )	<i>Ophelia denticulata</i>	380	15.75
1025	isopod ( <i>Politolana concharum</i> )	<i>Politolana concharum</i>	343	14.21
0507	common burrower amphipod	<i>Leptocheirus plumulosus</i>	303	12.56
0816	Atlantic jackknife clam	<i>Ensis directus</i>	270	11.19
5000	unidentified fish	Actinopterygii	252	10.44
0495	lancelets	<i>Branchiostoma</i> spp.	251	10.40
0491	sand lances	<i>Ammodytes</i> spp.	222	9.20
0636	four-eyed amphipods ( <i>Ampelisca</i> spp.)	<i>Ampelisca</i> spp.	217	8.99
0790	jackknife clams (razor clams)	Solenioidea	154	6.38
0841	unidentified amphipod	Amphipoda spp.	121	5.01
0656	Atlantic rock crab	<i>Cancer irroratus</i>	93	3.85
0103	bay anchovy	<i>Anchoa mitchilli</i>	82	3.40
1028	longfin inshore squid	<i>Loligo pealeii</i>	80	3.32
0708	unidentified material	unidentified material	79	3.27
0697	unidentified bloodworm	<i>Glycera</i> spp.	71	2.94
0709	unidentified mollusc meat	Mollusca	70	2.90
0671	amphipod ( <i>Corophium</i> spp.)	<i>Corophium</i> spp.	66	2.74
5035	unidentified crab	Decapoda	57	2.36
0004	butterfish	<i>Peprilus triacanthus</i>	56	2.32
0612	lady crab	<i>Ovalipes ocellatus</i>	53	2.20
5039	unidentified clam	Bivalvia	50	2.07
5012	crab parts	crab parts	49	2.03
0901	nematode	Nematoda	45	1.86
0674	unidentified cumacean	Cumacea	44	1.82
0539	cumacean ( <i>Oxyurostylis smithi</i> )	<i>Oxyurostylis smithi</i>	40	1.66
0738	red-eyed amphipod	<i>Monoculodes edwardsi</i>	38	1.57
1008	amphipod ( <i>Haustoriidae</i> )	Haustoriidae	38	1.57
0595	roughneck shrimp	<i>Rimapenaeus constrictus</i>	37	1.53
0500	short-browed mud shrimp	<i>Gilvossius setimanus</i>	32	1.33
0694	amphipod ( <i>Gammarus</i> spp.)	<i>Gammarus</i> spp.	31	1.28
0621	mantis shrimp	<i>Squilla empusa</i>	30	1.24
0673	unidentified crustacean	Crustacea	28	1.16
5016	unidentified rock crab	<i>Cancer</i> spp.	28	1.16
0705	shell	shell	27	1.12
0758	unidentified right-hand hermit crab	<i>Pagurus</i> spp.	26	1.08
5001	unidentified shrimp	Decapoda	26	1.08
5031	rock	rock	25	1.04

bony fishes	cartilaginous fishes
crustaceans	other animals
molluscs	miscellaneous
worms	

Prey Species	COMMON	LATIN	COUNT	PERCENT
0657	unidentified isopod	Isopoda spp.	23	0.95
5003	unidentified clam siphon	Bivalvia	23	0.95
0001	scup	Stenotomus chrysops	22	0.91
1012	amphipod ( <i>Amphiporeia virginiana</i> )	<i>Amphiporeia virginiana</i>	22	0.91
0629	unidentified worm	worm	22	0.91
5037	sand	sand	21	0.87
5006	vegetation	Plantae	21	0.87
0699	mysid	<i>Neomysis americana</i>	18	0.75
0498	unidentified bivalve	Bivalvia	18	0.75
0653	burrowing shrimp	<i>Axius serratus</i>	16	0.66
0663	isopod ( <i>Chiridotea tuftsii</i> )	<i>Chiridotea tuftsii</i>	16	0.66
0224	northern sand lance	<i>Ammodytes dubius</i>	15	0.62
0504	wood	Plantae	11	0.46
0659	amphipod ( <i>Casco bigelowi</i> )	<i>Casco bigelowi</i>	10	0.41
0508	isopod	<i>Ancinus depressus</i>	10	0.41
0665	isopod ( <i>Cirolana polita</i> )	<i>Cirolana polita</i>	10	0.41
5020	mound back isopod	<i>Edotia triloba</i>	10	0.41
0764	polychaete ( <i>Pherusa affinis</i> )	<i>Pherusa affinis</i>	10	0.41
0053	codlings	<i>Urophycis</i> spp.	9	0.37
0624	olivepit porcelain crab	<i>Euceramus praelongus</i>	9	0.37
0892	worm tubes	worm tubes	9	0.37
0833	unidentified pea crab	<i>Pinnixa</i> spp.	8	0.33
5032	animal tubes	animal tubes	8	0.33
0995	unidentified animal	unidentified animal	8	0.33
0745	shimmy worms ( <i>Nephtys</i> spp.)	<i>Nephtys</i> spp.	8	0.33
0721	amphipod ( <i>Hippomedon serratus</i> )	<i>Hippomedon serratus</i>	7	0.29
1010	unidentified mud shrimp	Thalassinidea	7	0.29
0683	isopod ( <i>Livoneca redmanii</i> )	<i>Livoneca redmanii</i>	7	0.29
0888	stout tagelus	<i>Tagelus plebeius</i>	7	0.29
0033	spot	<i>Leiostomus xanthurus</i>	6	0.25
0658	skeleton shrimp ( <i>Caprellidae</i> )	<i>Caprellidae</i> spp	6	0.25
0547	tube pea crab	<i>Pinnixa chaetoptera</i>	6	0.25
0023	searobins ( <i>Prionotus</i> spp.)	<i>Prionotus</i> spp.	5	0.21
0029	Atlantic herring	<i>Clupea harengus</i>	5	0.21
0437	blotched cusk-eel	<i>Ophidion grayi</i>	5	0.21
0574	unidentified mysid	Mysidae	5	0.21
0625	square-eyed mole crab	<i>Lepidopa websteri</i>	5	0.21
5029	eelgrass	<i>Zostera marina</i>	5	0.21
0802	blue mussel	<i>Mytilus edulis</i>	5	0.21
0645	sea mouse	<i>Aphrodita hastata</i>	5	0.21
0006	silver hake	<i>Merluccius bilinearis</i>	4	0.17
0007	weakfish	<i>Cynoscion regalis</i>	4	0.17
0070	spotted hake	<i>Urophycis regia</i>	4	0.17
0229	striped cusk-eel	<i>Ophidion marginatum</i>	4	0.17
5002	unidentified flatfish	Pleuronectiformes	4	0.17
0759	amphipod ( <i>Parahaustorius longimerus</i> )	<i>Parahaustorius longimerus</i>	4	0.17
0609	porcelain crab	<i>Porcellana sigsbeiana</i>	4	0.17

bony fishes	cartilaginous fishes
crustaceans	other animals
molluscs	miscellaneous
worms	

Prey Species	COMMON	LATIN	COUNT	PERCENT
0864	Atlantic sand crab	<i>Emerita talpoida</i>	4	0.17
7581	long-clawed hermit crab	<i>Pagurus longicarpus</i>	4	0.17
0570	sand isopod	<i>Chiridotea almyra</i>	4	0.17
0002	black seabass	<i>Centropristis striata</i>	3	0.12
0005	Atlantic croaker	<i>Micropogonias undulatus</i>	3	0.12
0027	blueback herring	<i>Alosa aestivalis</i>	3	0.12
0071	northern searobin	<i>Prionotus carolinus</i>	3	0.12
0102	striped anchovy	<i>Anchoa hepsetus</i>	3	0.12
0236	smallmouth flounder	<i>Etropus microstomus</i>	3	0.12
0529	fish scales	fish scales	3	0.12
0916	unidentified herring	Clupeidae	3	0.12
0590	flat-browed mud shrimp	<i>Upogebia affinis</i>	3	0.12
0594	unidentified mud crab	Xanthidae	3	0.12
0679	bristled longbeak	<i>Dichelopandalus leptocerus</i>	3	0.12
0501	eastern beaded chiton	<i>Chaetopleura apiculata</i>	3	0.12
0798	polychaete (Terebellidae)	Terebellidae	3	0.12
0026	alewife	<i>Alosa pseudoharengus</i>	2	0.08
0076	round herring	<i>Etrumeus teres</i>	2	0.08
0281	unidentified gobies	Gobiidae	2	0.08
1009	skeleton shrimp ( <i>Caprella</i> spp.)	<i>Caprella</i> spp.	2	0.08
0020	American lobster	<i>Homarus americanus</i>	2	0.08
0552	smooth mud crab	<i>Hexapanopeus angustifrons</i>	2	0.08
0623	shrimp ( <i>Acetes</i> spp.)	<i>Acetes</i> spp.	2	0.08
5026	unidentified spider crab	<i>Libinia</i> spp.	2	0.08
7582	flat-clawed hermit crab	<i>Pagurus pollicaris</i>	2	0.08
0526	isopod ( <i>Chiridotea</i> spp.)	<i>Chiridotea</i> spp.	2	0.08
0918	isopods ( <i>Edotia</i> )	<i>Edotia</i> spp.	2	0.08
0801	soft shell clam	<i>Mya arenaria</i>	2	0.08
0661	unidentified cephalopoda	Cephalopoda	2	0.08
0742	New England dog whelk	<i>Nassarius trivittatus</i>	2	0.08
0884	unidentified drill or snail	Gastropoda	2	0.08
0702	sand dollar	<i>Echinarachnius parma</i>	2	0.08
0703	unidentified hydroid	Cnidaria	2	0.08
0667	trumpet worm	<i>Pectinaria gouldi</i>	2	0.08
0668	bamboo worm	<i>Clymenella torquata</i>	2	0.08
0015	red hake	<i>Urophycis chuss</i>	1	0.04
0025	sturgeons ( <i>Acipenser</i> spp.)	<i>Acipenser</i> spp.	1	0.04
0043	Atlantic mackerel	<i>Scomber scombrus</i>	1	0.04
0095	blue marlin	<i>Makair nigrican</i>	1	0.04
0256	unidentified river herrings	<i>Alosa</i> spp.	1	0.04
0399	common anchovies	<i>Anchoa</i> spp.	1	0.04
0963	unidentified croaker/drum	Sciaenidae	1	0.04
0535	amphipod ( <i>Cerapus tubularis</i> )	<i>Cerapus tubularis</i>	1	0.04
0634	four-eyed amphipods ( <i>Ampelisca abdita</i> )	<i>Ampelisca abdita</i>	1	0.04
0509	copepod ( <i>Harpacticoid</i> )	<i>Harpacticoid</i> copepod	1	0.04
0578	swimming crab ( <i>Portunus</i> spp.)	<i>Portunus</i> spp.	1	0.04
0600	jonah crab	<i>Cancer borealis</i>	1	0.04

bony fishes	cartilaginous fishes
crustaceans	other animals
molluscs	miscellaneous
worms	

Prey Species	COMMON	LATIN	COUNT	PERCENT
0606	swimming crab ( <i>Bathynectes superba</i> )	<i>Bathynectes superba</i>	1	0.04
0617	acadian hermit crab	<i>Pagurus acadianus</i>	1	0.04
0675	unidentified decapod (crabs, shrimp, lobsters)	Decapoda	1	0.04
0757	hairy hermit crab	<i>Pagurus arcuatus</i>	1	0.04
0863	shameface heart crab	<i>Cryptosoma bairdii</i>	1	0.04
0933	unidentified ghost shrimps	Callianassidae	1	0.04
5011	unidentified shrimp zoea	Decapoda	1	0.04
5023	pea crab ( <i>Pinnixa cylindrica</i> )	<i>Pinnixa cylindrica</i>	1	0.04
0513	slender isopod	<i>Cyathura polita</i>	1	0.04
0981	isopod ( <i>Synidotea laevidorsalis</i> )	<i>Synidotea laevidorsalis</i>	1	0.04
0585	mud	Miscellaneous	1	0.04
0706	sand tubes	sand tubes	1	0.04
0478	macro algae	macro algae	1	0.04
0947	green jackknife clam	<i>Solen viridis</i>	1	0.04
0017	Loligo squid	<i>Loligo</i> spp.	1	0.04
0825	bryozoans/dead man fingers	<i>Alcyonidium</i> spp.	1	0.04
0496	unidentified echinoderm	Echinodermata	1	0.04
0755	unidentified brittle stars	Ophiuroidea	1	0.04
1024	hydroids ( <i>Diphasia</i> spp.)	<i>Diphasia</i> spp.	1	0.04
0824	sea squirts ( <i>Molgula</i> spp.)	<i>Molgula</i> spp.	1	0.04
0510	clam worm ( <i>Nereis</i> spp.)	<i>Nereis</i> spp.	1	0.04
0631	polychaete ( <i>Aglaophamus circinata</i> )	<i>Aglaophamus circinata</i>	1	0.04
0692	hard tube worm	<i>Filograna implexa</i>	1	0.04
0744	shimmy worm ( <i>Nephtys incisa</i> )	<i>Nephtys incisa</i>	1	0.04
0751	polychaete ( <i>Nicolea venustula</i> )	<i>Nicolea venustula</i>	1	0.04
1001	unidentified Opheliid worm	Opheliidae	1	0.04

# *Lophius americanus*

VIMSCODE: 0242

Common Name: Monkfish

Stomachs Processed (Full Workup Samples): 103

% Empty Stomachs or No/Improper Sample: 6%

bony fishes	cartilaginous fishes
crustaceans	other animals
molluscs	miscellaneous
worms	

Prey Species	COMMON	LATIN	COUNT	PERCENT
5000	unidentified fish	Actinopterygii	36	34.95
1028	longfin inshore squid	Loligo pealeii	27	26.21
0001	scup	Stenotomus chrysops	22	21.36
0004	butterfish	Peprilus triacanthus	17	16.50
5002	unidentified flatfish	Pleuronectiformes	13	12.62
0005	Atlantic croaker	Micropogonias undulatus	12	11.65
0033	spot	Leiostomus xanthurus	7	6.80
0102	striped anchovy	Anchoa hepsetus	7	6.80
0006	silver hake	Merluccius bilinearis	6	5.83
0007	weakfish	Cynoscion regalis	5	4.85
0015	red hake	Urophycis chuss	3	2.91
0679	bristled longbeak	Dichelopandalus leptocerus	3	2.91
0003	summer flounder	Paralichthys dentatus	2	1.94
0037	Atlantic menhaden	Brevoortia tyrannus	2	1.94
0063	windowpane	Scophthalmus aquosus	2	1.94
0076	round herring	Etrumeus teres	2	1.94
5001	unidentified shrimp	Decapoda	2	1.94
0013	kingfish (Menticirrhus spp.)	Menticirrhus spp.	1	0.97
0027	blueback herring	Alosa aestivalis	1	0.97
0029	Atlantic herring	Clupea harengus	1	0.97
0030	American shad	Alosa sapidissima	1	0.97
0031	striped bass	Morone saxatilis	1	0.97
0035	red drum	Sciaenops ocellatus	1	0.97
0053	codlings	Urophycis spp.	1	0.97
0070	spotted hake	Urophycis regia	1	0.97
0103	bay anchovy	Anchoa mitchilli	1	0.97
0152	blackcheek tonguefish	Symphurus plagiosa	1	0.97
0213	silver perch	Bairdiella chrysoura	1	0.97
0242	goosefish	Lophius americanus	1	0.97
0916	unidentified herring	Clupeidae	1	0.97
0507	common burrower amphipod	Leptocheirus plumulosus	1	0.97
0595	roughneck shrimp	Rimapenaeus constrictus	1	0.97
5031	rock	rock	1	0.97
0790	jackknife clams (razor clams)	Solenioidea	1	0.97