

Exploring the use of micro-computed tomography (micro-CT) in the taxonomy of sea cucumbers: a case-study on the gravel sea cucumber *Neopentadactyla mixta* (Östergren, 1898) (Echinodermata, Holothuroidea, Phyllophoridae)

Yves Samyn¹, Gontran Sonet², Cédric d’Udekem d’Acoz¹

1 Scientific Service of Patrimony, Royal Belgian Institute of Natural Sciences, Vautierstraat 29, 1000, Brussels, Belgium **2** Joint Experimental Molecular Unit, Royal Belgian Institute of Natural Sciences, Vautierstraat 29, 1000, Brussels, Belgium

Corresponding author: Yves Samyn (ysamyn@naturalsciences.be)

Academic editor: D.V. Spiegel | Received 19 April 2021 | Accepted 7 June 2021 | Published 4 August 2021

<http://zoobank.org/F68C2889-F919-4D01-BB50-F415935024BC>

Citation: Samyn Y, Sonet G, d’Udekem d’Acoz C (2021) Exploring the use of micro-computed tomography (micro-CT) in the taxonomy of sea cucumbers: a case-study on the gravel sea cucumber *Neopentadactyla mixta* (Östergren, 1898) (Echinodermata, Holothuroidea, Phyllophoridae). ZooKeys 1054: 173–184. <https://doi.org/10.3897/zookeys.1054.67088>

Abstract

Sea cucumber taxonomy and systematics has in the past heavily relied on gross external and internal anatomy, ossicle assemblage in different tissues, and molecular characterisation, with coloration, habitat, and geographical and bathymetric distribution also considered important parameters. In the present paper, we made these observations and techniques in detail and complemented them with the novel technique of micro-computed tomography of the calcareous ring. We investigated a single European species, the so-called gravel sea cucumber, *Neopentadactyla mixta* (Östergren, 1898), using recently collected material from the Chausey Islands, Normandy, France. We redescribed the species, illustrated its ossicle assemblage through scanning electron microscopy, and visualised the calcareous ring through stacking photography and through micro-CT scanning. Additionally, a DNA fragment of 955 base pairs of the 18S ribosomal RNA gene was sequenced from one specimen, which showed a high similarity with the only sequence of *N. mixta* publicly available. We completed this integrative study by providing a detailed distribution of the occurrence of *N. mixta* based on published, verifiable accounts.

Keywords

Integrative taxonomy, micro-CT, Normandy, scanning electron microscopy

Introduction

Recently, during a leisure expedition, Mr Francis Kerckhof of the Royal Belgian Institute of Natural Sciences collected four specimens of sea cucumbers on a beach in the Chausey Archipelago, Normandy, France. Collecting was done during a low, spring tide, between rocks, on coarse/gravelly sand mixed with shell (fragments), which is characteristic of a wave-beaten environment.

The species was identified as *Neopentadactyla mixta* (Östergren, 1898), the gravel-sea cucumber, based on ossicles and the structure of the calcareous ring.

Examination of the calcareous ring, one of the key characters differentiating (sub)families in the order Dendrochirotida Grube, 1840, has in the past been made through intrusive and partly destructive dissections. Micro-computed tomography (i.e., micro-CT or μ CT) provides an alternative, non-destructive method to decipher the structure of the calcareous ring. The goal of this paper is to evaluate the efficacy of this method.

Improved methods to study calcareous rings are needed in comparative taxonomic research. Smirnov (2012: 806), after a detailed and well-considered reflection of nearly 200 years of holothuroid classification noted: “the morphology of the calcareous ring is very important, although it is very difficult to describe its morphology and even more difficult to characterize features distinguishing the orders”. Other authors, e.g., Cherbonnier (1988) and Thandar (1989), also made extensive use of the structure of the calcareous ring to distinguish dendrochirotids at family and subfamily levels. Study of the calcareous ring has generally been accomplished through dissection, except for some sea cucumbers with a translucent body (e.g., *Epitomapta simentalae* Solis-Marín et al., 2019) or those that readily expel their calcareous ring upon collection (e.g., species of the genus *Massinium* Samyn & Thandar, 2003).

In a broad phylogenetic study of Holothuroidea, Miller et al. (2017) noted that some morphological characters in holothuroid systematics are subject to homoplasy. More detailed anatomical studies, such as non-invasive micro-CT scanning of the calcareous ring and also, to a certain extent, other hard substances such as ossicles, allow a more in-depth appraisal of these structures and may offer resolution of apparently homoplastic characters.

Here we combine a traditional description of external and internal morphology and anatomy, with a *de novo* illustration of ossicle assemblages through SEM (the only and last detailed illustrations for *N. mixta* was provided by decades ago by Féral 1979), a genetic characterization through the sequencing of 955 base pairs (bp) of the 18S ribosomal gene that we compared with the only available 18S DNA sequence available for this species (Lacey et al. 2005), and a visualization of the calcareous ring through micro-CT as well as focus-stacked photography. This threefold approach is an attempt to arrive at an innovative approach to describe and classify sea cucumbers in a more modern and integrative way.

Materials and methods

On 20 April 2019, four specimens of *Neopentadactyla mixta* were collected at extreme low tide on the Plage de la Grande Grève, (48°52.5'N, 1°50.8'W) on the Grande Île of the Chausey Archipelago, France. The specimens were relaxed in a solution of $\pm 5\%$ $\text{MgCl}_2 \cdot 6\text{H}_2\text{O}$ prior to fixation with 70–75% ethanol for 1 day, whereafter they were preserved in 70% ethanol denatured with diethyl ether for another 2 days before being placed in 70% buffered diethyl ether ethanol for permanent storage.

Ossicles from one out of the four specimens were prepared for light and scanning electron microscopy (SEM) by dissolving small pieces of dorsal and ventral body wall, tube feet, papillae, tentacles, and longitudinal muscle in household bleach, carefully rinsed with distilled water (Samyn et al. 2006) and observed through the microscope; no permanent slides were made. For SEM, ossicles were dried and mounted on aluminium stubs, coated with gold in a sputter coater, and observed with a FEI/Philips XL30 ESEM TMP Scanning Electron Microscope.

Micro-CT scanning was done with a RX EasyTom (RX Solutions, Chavanod, France; <http://www.rxsolutions.fr>), with an aluminium filter at the Royal Belgian Institute of Natural Sciences in Brussels, Belgium. No contrast agent was used on the specimen studied. For the 3D visualisation of the specimen (Fig. 2A) images were generated at a voltage of 88 kV and a current of 272 μA , with a set frame rate of 3.25 and 5 average frames per image. This generated 1824 images and a voxel size of 28.63 μm . For the calcareous ring *per se* (Fig. 2B, C), images were generated at a voltage of 71 kV and a current of 412 μA , with a set frame rate of 4 and 5 average frames per image. This generated 2016 images and a voxel size of 23.90 μm . Reconstructions were performed using X-Act software from RX Solutions. Segmentation, visualization, and analysis were performed using Dragonfly software for Windows (Object Research Systems (ORS) Inc., Montreal, Canada, 2020; software available at <http://www.theobjects.com/dragonfly>). 3D mesh files are available on <https://sketchfab.com/3d-models/be-rbins-hol-1736-neopentadactyla-mixta-b013d76558234a84a4b6907132eff93d>.

The stacked photo reconstruction of the calcareous ring and its surrounding anatomical structures was done with a reflex Canon EOS 6D Mark II equipped with a Canon MP-E 65mm macro lens. This set-up was fixed on a Cognisys StackShot Macro Rail which is guided with Helicon Remote software. Photo-stacking on 30 different pictures was done with Zerene Stacker Software.

DNA was extracted from a piece of body wall using the NucleoSpin Tissue Kit following the manufacturer's protocol (Macherey-Nagel, Germany). Even though other DNA fragments are known to provide better resolution for DNA-based species identification, a fragment of 955 bp of the 18S ribosomal RNA gene was targeted because it is currently the only DNA sequence publicly available for *N. mixta*. The 18S ribosomal RNA gene was amplified using a nested polymerase chain reaction (PCR) protocol based on the primers and the conditions described by Lacey et al. (2005). The PCRs were prepared in volumes of 25 μl containing 1 μl of DNA template, 0.03 U/ μl of Plati-

num Taq DNA Polymerase (Life Technologies, USA), 1X PCR buffer, 0.2 mM dNTPs, 0.4 μ M of each primer, and 1.5 mM MgCl₂. The first PCR was performed with primers EC-2F (AYCTGGTTGATYYTGCCAG) and WN-1708R (TGATCCATCTGCAG-GTTCACCT) with the following thermal profile: one step at 94 °C for 3 min, then 40 cycles at 94 °C for 45 s, 55 °C for 45 s and 72 °C for 120 s, and a final step at 72 °C for 7 min. The second PCR was performed with primers 421-F (AAACGGCTACCACATC-CAAG) and 1482-R (AGGGCATCACAGACCTGTTA), using 1 μ l of the product of the first PCR as template DNA and with the following thermal profile: one step at 94 °C for 3 min, then 40 cycles at 94 °C for 30 s, 53 °C for 30 s and 72 °C for 120 s, and a final step at 72 °C for 7 min. PCR products were visualized on a 1.2% agarose gel after electrophoresis at 100V and purified using the ExoSAP procedure (Exonuclease I – Shrimp Alkaline Phosphatase from ThermoFisher, USA). PCR products were sequenced bi-directionally on an ABI automated capillary sequencer using the BigDye v. 3.1 chemistry following the manufacturer's instructions (Life Technologies, USA). DNA chromatograms were checked, trimmed and assembled using CodonCode Aligner v. 8.0.2 (CodonCode Corp., Centerville, Massachusetts). Consensus sequence was compared to public records using the Basic Local Alignment Search Tool (BLAST) (Altschul et al. 1990) of the National Center for Biotechnology Information, U.S. National Library of Medicine (NCBI) and submitted to GenBank (accession number MW522513).

Results

Phyllophoridae Östergren, 1907

Neopentadactyla Deichmann, 1944

Neopentadactyla mixta (Östergren, 1898)

Figures 1A–L, 2A–D

Pseudocucumis mixta Östergren, 1898: 104, 105, 135, fig. 3 (p. 109).

Pseudocucumis mixta: Bedford 1898: 843 (discussion); Östergren 1902: 24, note 1; Östergren 1904: 659; Östergren 1906: 1–24, figs 1–3; Ohshima 1912 54, 59 (discussion); Lieberkind 1929: 14; Massy 1920: 52; Koehler 1921: 168, fig. 124; Mortensen 1924: 236, fig. 116; Koehler 1927: 195, pl. 16, fig 16; Engel 1933: 33–34 (distribution); Cherbonnier 1952: 570, figs 1, 2; Könnecker and Keegan 1973: 157–162 (*in situ* pictures).

Pseudocucumis Cuenoti Koehler & Vaney, 1905: 395, figs 1–6.

Neopentadactyla mixta: Deichmann, 1944: 736; Heding and Panning 1954: 186, fig. 91; Féral 1979: 111, figs A–L; Féral 1980: 42, figs 1, 2; Smith 1983: 301, figs 1–4; Wood 1988: 143, 151 (drawing), 179; Moysse and Tyler 1990: 866 (key), 869, fig. 15.14 (upper left); Hansen and McKenzie 1991: 123 (lectotype and 3 paralectotypes), fig. 126–140; McKenzie 1991: 126, fig. 1; 132, fig. 3a–d; Picton 1993: 78 (colour photograph); McKenzie 1997: 274; Southward and Campbell 2006: 224, fig. 201.

Status and location of types. Museum of Evolution, Uppsala University, Sweden (UP-SZTY 2346): lectotype (249a); 2 paralectotypes (249b) (designated by McKenzie in 1990 according to the database of the Upsala Museum). McKenzie (1991) stated that he did not designate a lectotype and paralectotypes. In another publication Hansen and McKenzie (1991: 123) did designate and describe the lectotype (“*Typsamlingen Nr. 249a*”) from the four syntypes as present in the Uppsala Museum’s collection; the three remaining syntypes therefore become paralectotypes. Hansen and McKenzie (1991: 123) stated that they have maintained the original division of the four syntypes over two jars (249a and 249b), “each containing two specimens one of which was dissected, the other intact”. According to Hansen and McKenzie (1991), the lectotype is thus together with one of the paralectotype in Jar 249a, while the other two paralectotypes are in jar 249b. We did not revisit this type series.

Type locality. W. Norway (most likely Molde, i.e., about 62°45'N, 7°14'E).

Material examined. RBINS I.G. 33990, HOL.1736 (4 specimens plus SEM stubs: I.G. 33990/HOL.1736/1-8).

Description (based on material examined). Body elongate, with central part inflated and anterior and posterior ends more narrow. Length of fixed specimens 50–155 mm (measured along the dorsal face); diameter 30–80 mm at mid-body, 21–43 mm anteriorly and 12–25 mm posteriorly. Color in alcohol after a short period of preservation same as color in life: body light beige, with irregular, brownish spots and patches (Fig. 1A, D); patches larger ventrally. Tentacles with their shaft light beige and the branches brownish with beige tips. According to McKenzie (1991), 10 large, five small, and five intermediate sized tentacles can be observed in live specimens. Insufficient relaxation of the specimens at hand made it impossible to observe the exact position of the tentacles in the specimens under study. Tube feet predominantly in the radii, in irregular double series anteriorly and posteriorly and in up to six rows, spreading into the interradii ventrally. Tube feet light beige. Body wall gritty to the touch. Body wall thin mid-body, thicker anteriorly and distally, possibly an artefact of fixation. Longitudinal muscles visible through the body wall where the skin is thinnest. Longitudinal muscles thick, undivided, and attached to the body wall along their entire width. Retractor muscles arise about 1/3 of the body length from anterior end, attaching to the radial section of the long and thin tubular calcareous ring, which itself is about 1/4 of the body length (Fig. 2A). Calcareous ring with five radial and five interradii parts (Fig. 2B). The radial parts are anteriorly notched, with 1–3 larger plates anteriorly and an irregular meshwork of smaller plates posteriorly. The interradii parts are anteriorly pointed, have 3 or 4 larger plates anteriorly and an irregular meshwork of smaller plates posteriorly (Fig. 2B). Calcareous ring embedded in a thin layer of tissue, with the calcified elements connected by connective tissue. (Fig. 2D). No clear posterior ending visible at the end of the comet-shaped, calcareous ring (Fig. 2A). Internal surfaces of especially the radial pieces are guttered (Fig. 2C). Single, very long Polian vesicle; single curled stone canal embedded in the dorsal mesentery (Fig. 2D).

Tentacle shafts with irregular, complex rosettes, 30–45 μm long and 15–25 μm wide (Fig. 1E); tentacle tips with straight to curved, terminally perforated rods, 30–55 μm long and rosettes similar to those of the tentacle shafts (Fig. 1G); introvert with

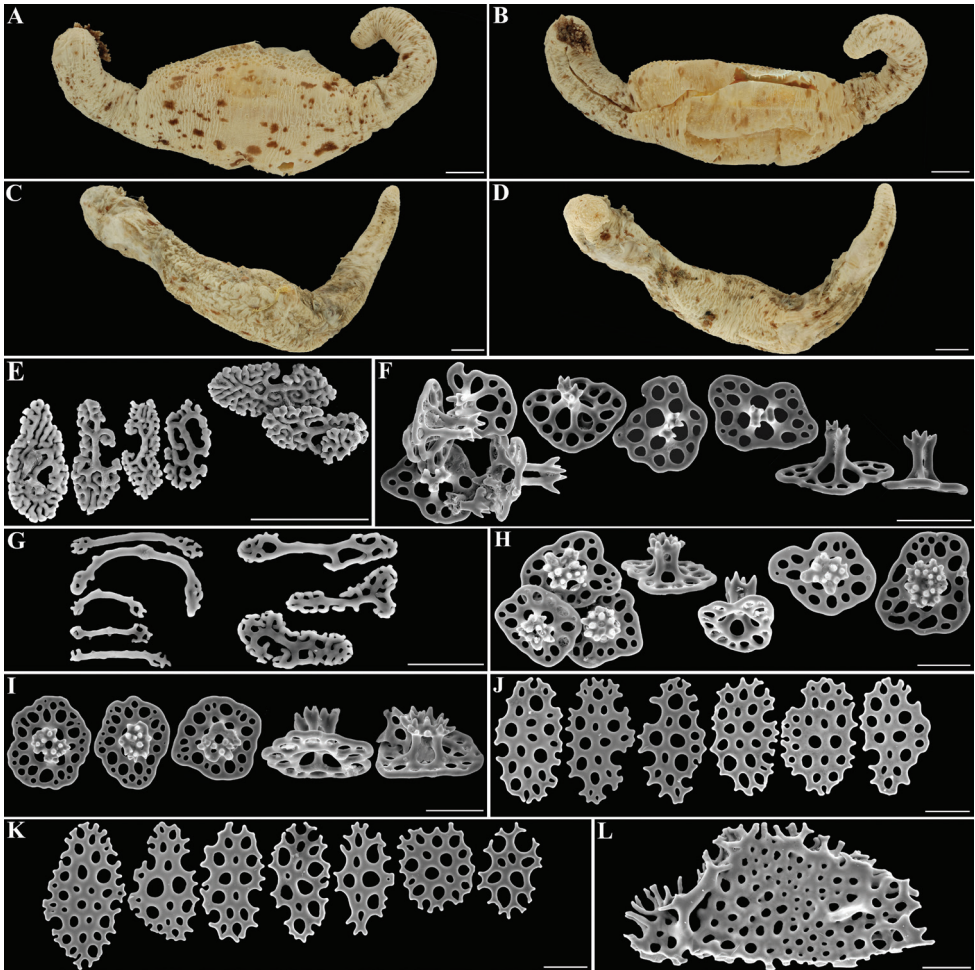


Figure 1. *Neopentadactyla mixta* (Östergren, 1898) **A** focus-stacked view of the dorsal-lateral view of dissected specimen **B** focus-stacked view of the ventral-lateral view of dissected specimen **C** focus-stacked view of the dorsal-lateral view of a non-dissected specimen **D** focus-stacked view of the ventral-lateral view of a non-dissected specimen **E** SEM view of the rosettes from the shaft of a tentacle **F** SEM view of the 2-pillared tables from the introvert **G** SEM view of the rods and rosettes from a tentacle tip **H** SEM view of the 4-pillared tables from the dorsal body wall **I** SEM view of the 4-pillared tables from the ventral body wall **J** SEM view of the plates from the dorsal tube feet **K** SEM view of the plates from the ventral tube feet **L** SEM view of half of an end-plate from a ventral tube foot. Scale bars: 1 cm (**A–D**); 50 μ m (**E–L**).

2-pillared tables only, disc smooth, 65–80 μ m in diameter, irregular in outline, perforated by four central holes and a variable number of irregularly peripheral holes; pillars 40–65 μ m high, with single cross-beam, ending in a narrow, sparsely-spined crown (Fig. 1F); dorsal and ventral body wall with 4-pillared tables, 80–100 μ m in diameter, smooth rim, irregular in outline, perforated by four central holes and a variable number of peripheral holes arranged in multiple irregular circles; pillars 60–76 μ m high,

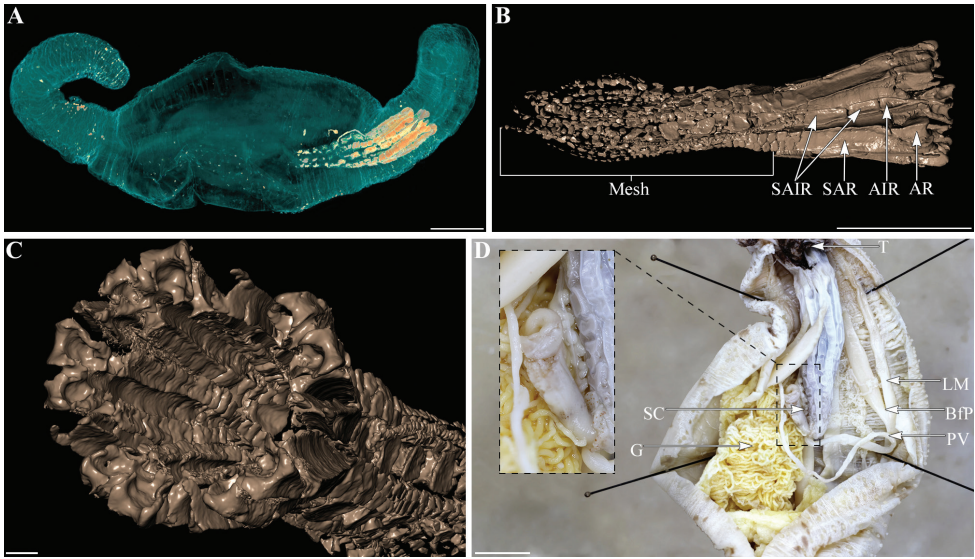


Figure 2. *Neopentadactyla mixta* (Östergren, 1898) **A** micro-CT scan visualizing the position of the calcareous ring **B** lateral view with micro-CT imaging of the anterior part of the calcareous ring (AR: most anterior radial piece; AIR: most anterior interradial pieces; SAR: subsequent anterior radial pieces; SAIR: subsequent interradial anterior pieces; Mesh: meshwork of radial and interradial median to distal pieces) **C** oblique view with micro-CT imaging showing a guttered internal side of the calcareous ring **D** focus-stacked view of the calcareous ring and associated structures (T: tentacles; LM: longitudinal muscle with bifurcation point (BfP); PV: Polian vesicle; SC: stone canal). Scale bars: 1 cm (**A–D**).

with single cross-beam, ending in a narrow, spined crown (Fig. 1H, I). Dorsal and ventral tube feet with plates, 64–95 μm long and 40–55 μm wide; endplate ± 200 μm in diameter, with uneven sized holes and with some relief (Fig. 1L). Contrary to Féral's (1980) observation, no tables could be found in the tube feet. Longitudinal muscles devoid of ossicles.

Distribution. North and West European coasts: Molde, West Norway (Östergren 1898); Arcachon, Bréhat Island, Wimereux, Roscoff, Chausey Islands, France (Koehler and Vaney 1905; Koehler 1921; Cabioch 1965; Féral 1979, 1980; this study); Northern British Islands, Faroe Islands (Östergren 1906; Lieberkind 1929); Tatihou Island, Normandy, France (Östergren 1906), Ireland (Massy 1920; Könnecker and Keegan 1973; Féral 1979); Denmark (Mortensen 1924); Swedish and Norwegian waters (Hansen and McKenzie 1991).

Bathymetric range. Intertidal (present study) to 200 m depth (Southward and Campbell 2006).

Ecology. *Neopentadactyla mixta* is most frequently found in maerl beds and coarse shell gravels with fairly strong tidal streams. It is a gregarious species, which may occur in densities of up to 297 individuals/ m^2 (Könnecker and Keegan 1973; McKenzie 1991; Picton 1993). Könnecker and Keegan (1973) reported *N. mixta* to be a rheophilic suspension feeder with diurnal feeding rhythm. Smith and Keegan (1985) demonstrated that *N.*

mixta individuals on the west coast of Ireland stop their suspension feeding from autumn to spring and retire to depths of 30–60 cm in the coarse sediments during that period. As with other phyllophorids (e.g., *Massinium maculosum* Samyn & Thandar, 2003), this species exposes only its tentacle crown and part of its introvert and the tip of its anus.

The sediment from the beach where the studied specimens were collected consisted of coarse, gravelly sand, characteristic for a wave-beaten environment and harboured a very rich and diverse fauna of other burrowing taxa (Bivalvia, Polychaeta, Sipuncula, Nemertea, etc.)

Systematics. The DNA sequence retrieved from GenBank (<http://www.ncbi.nlm.nih.gov>) most similar to the 18S sequence obtained here was labelled as *Neopentadactyla mixta* (accession number AY133482). Its similarity with our sequence is 99.16%. This sequence is currently the only DNA sequences available online for this species. The next most similar public DNA records were from *Phyrella mookie* Michonneau & Paulay, 2014 (KX856842, 97.18%), a phyllophorid, and *Afrocucumis africana* (Semper, 1867) (KX856841, 97.18%), a sclerodactylid. The high DNA similarity with *N. mixta* supports the morphological identification of the specimen studied here as *N. mixta*, as a species belonging to Phyllophoridae. This DNA-based result is backed up by its ecology, the gross morphology of the specimens, the structure of the calcareous ring, and the ossicle assemblage. However, the high DNA similarity with *A. africana* is troubling, as *Afrocucumis* Deichmann, 1944 is characterized by a very different “skeletal structure”: the calcareous ring has its radial pieces with two short, unsegmented, projections; the interradial pieces are without posterior projections; and the body wall holds large, 310–400 µm wide lenticular plates (Massin 1996). In *N. mixta*, no lenticular plates are present, and the calcareous ring is a much more complex structure (see the description above).

Deposition of images. SEM images of ossicles and a focus-stacked image of the calcareous ring has been put on the Royal Belgian Institute of Natural Sciences “Virtual Collections” website at http://virtualcollections.naturalsciences.be/virtual-collections/recent-invertebrates/echinodermata#c4=N&tb_start=0.

3D mesh files have been put on <https://sketchfab.com/3d-models/be-rbins-hol-1736-neopentadactyla-mixta-b013d76558234a84a4b6907132eff93d>.

Discussion

Neopentadactyla mixta was originally attributed to the monotypic genus *Pseudocucumis* Ludwig, 1875 by Östergren (1898). However, as correctly noted by Deichmann (1944), *Pseudocucumis* was established to accommodate *Cucumaria acicula* Semper, 1867 because of its particular ossicle assemblage (i.a. tables with reduced disc and fused pillars ending in a narrow crown). *Cucumaria acicula*, however, was referred to the genus *Urodemas* Selenka, 1867 (now considered a junior synonym of *Cladolabes* Brandt, 1835) by Deichmann (1944), making *Pseudocucumis* the junior synonym of *Urodemas* and *Cladolabes*. Deichmann (1944) proposed the generic replacement name *Neopenta-*

dactyla Deichmann, 1944 to accommodate *Pseudocucumis mixta*. *Neopentadactyla* has remained monotypic ever since (Heding and Panning 1954).

Heding and Panning (1954) divided the Phyllophoridae into several new subfamilies and put *Neopentadactyla* in Semperiellinae Heding & Panning, 1954. Since then the systematics of the Dendrochirotida has changed. In an attempt to bring order to the higher systematics of dendrochirote holothuroids, Pawson and Fell (1965) proposed two new families (Placothuriidae and Paracucumidae) and retained the Phyllophoridae as one of the valid families in the order. They diagnosed the Phyllophoridae as those dendrochirotid sea cucumbers with a calcareous ring composed of a mosaic of small pieces, unlike Heding and Panning (1954) who diagnosed Phyllophoridae as those dendrochirotids that present more than 10 tentacles, do not present a well-defined ventral sole, and predominantly present tables or derivatives thereof in their body wall. Thandar (1990) complemented Pawson and Fell's (1954) diagnosis with the description of the ossicle assemblage and the number of tentacles.

Micro-CT scans have been extensively used by one of us (CUA) for imaging hard structures in echinoderms, including calcareous rings of Holothuroidea. Results have been variable but sometimes they have revealed structures that could not be otherwise visualized. Micro-CT images have advantages and disadvantages compared to photography. The main advantage of this rather new technique is the non-destructive approach (especially important when studying rare species or type specimens) and its theoretical capacity to separate hard structures from soft tissues. The structures can also be easily rotated in all orientations, allowing not only for snapshots in optimal positions, but also for visualizing features in their original position and this in three dimensions. However, in practice, there is often a gradient of opacity to X-rays between genuine soft tissues and fully ossified structures. Therefore, it is sometimes difficult to decide of an optimal image setting and misleading image artefacts can appear if too much material of medium X-ray density is digitally removed. Problems of this nature were met with *N. mixta*, without being too serious. Another disadvantage is the usually rather low resolution of the images, where the surface details can be erased by excessive smoothing. Scanning and editing scans are time consuming and sometimes expensive operations, which require the work of an experienced operator. In the case of *N. mixta*, micro-CT scans provided images which, while not absolutely perfect, allowed for a more detailed analysis and interpretation of the structure of the calcareous ring. However, they proved insufficient for illustrating the ossicle assemblage. Thus, ossicles were imaged using more traditional scanning electron microscopy.

In conclusion, micro-CT scanning is expensive and demands experienced operators with knowledge of the anatomical structures to be visualized. Here, we applied this technique to the calcareous ring, a key taxonomic character within the Dendrochirotida/Phyllophoridae. Imaging of the ossicle assemblage through micro-CT scanning proved insufficient and SEM is here preferred, both to analyse the structure and the dimensions of the ossicle assemblage. Species identification could be verified by comparison with the only other DNA sequence available in BOLD.

Acknowledgements

We thank Francis Kerckhof of the Royal Belgian Institute of Natural Sciences in Brussels (RBINS) for finding and collecting the specimens here studied. We are further thankful to Laetitia Despontin (RBINS) for the SEM imaging of the ossicle assemblage and for the mounting of the two figures. We also thank Yves Barette (RBINS) for producing figures of one of the specimens using focus-stacking. Finally, we thank the two referees of this paper, Gustav Paulay (Florida Museum of Natural History) and Jonathan Brecko (RBINS) for their constructive criticism on the draft of this paper.

References

- Bedford FP (1898) Report on the holothurians collected, by M. J. Stanley Gardiner at Funafuti and Rotuma. Proceedings of the Zoological Society of London 68: 834–848. [pls 52, 53.] <https://doi.org/10.1111/j.1096-3642.1898.tb03186.x>
- Brandt JF (1835) Echinodermata ordo Holothurina. Prodromus Descriptionis Animalium ab H. Mertensio in Orbis Terrarum Circumnavigatione Observatorum. Fasc. I. Petropoli, 42–62. <https://www.biodiversitylibrary.org/page/10765514>
- Cabioch L (1965) Notes sur la faune marine benthique de Roscoff. Echinodermes. Cahiers de Biologie Marine 6: 265–268.
- Cherbonnier G (1952) Sur la présence à Roscoff de *Pseudococumis mixta* Ostergren (Holothurie dendrochirote). Bulletin du Muséum national d'Histoire naturelle, Paris (série 2) 24: 570–573.
- Cherbonnier G (1988) Echinodermes: holothurides. Faune de Madagascar 70: 1–292.
- Deichmann E (1944) *Urodemas bifurcatum*, a new holothurian from South Africa, with a revision of the genus *Urodemas* Selenka. Annals Magazine Natural History (series 11) 11: 731–737. <https://doi.org/10.1080/00222934408527470>
- Engel H (1933) Holothuries. Résultats Scientifiques du Voyage aux Indes Orientales Néerlandaises de LL. AA. RR. Le Prince et la Princesse Léopold de Belgique. Mémoires du Musée Royal d'Histoire Naturelle de Belgique, Hors Série 3(13): 3–42.
- Féral JP (1979) *Neopentadactyla mixta* (Holothurioidea: Phyllophoridae) – Spiculation et croissance. In: Jangoux (Ed). Echinoderms: Present and Past, Rotterdam, 111–113. <https://doi.org/10.1201/9781003078913-20>
- Féral JP (1980) Variation de la spiculation au cours de la croissance chez *Neopentadactyla mixta* (Östergren) 1898. (Holothurioidea, Phyllophoridae). Cahiers de Biologie Marine 21: 41–49.
- Grube AE (1840) Actinien, Echinodermen und Würmer des Adriatischen- und Mittelmeers nach eigenen Sammlungen beschrieben. J.H. Bon, Königsberg, 92 pp. <https://www.biodiversitylibrary.org/page/10662919>
- Hansen B, McKenzie JD (1991) A taxonomic review of Northern Atlantic species of Thyonidiinae and Semperiellinae (Echinodermata: Holothuroidea: Dendrochirotida). Zoological Journal of the Linnean Society 103(2): 101–127. <https://doi.org/10.1111/j.1096-3642.1991.tb00899.x>

- Heding SG, Panning A (1954) Phyllophoridae. Eine Bearbeitung der Polytentaculaten Dendrochiroten Holothurien des Zoologische Museum in Kopenhagen. *Spolia Zoologica Musei Hauniensis* 13: 1–209.
- Koehler R (1921) Echinodermes. Faune de France, Tome 1. Paul Lechevalier, Paris, 10 pp.
- Koehler R (1927) Les Echinodermes des Mers d'Europe, Tome 2. Librairie Octave, Gaston Doin, Paris, 339 pp.
- Koehler R, Vaney C (1905) Description d'une nouvelle holothurie des côtes de France (*Pseudocucumis Cuenoti* nov. sp.) *Revue Suisse de Zoologie* 13: 395–400. <https://www.biodiversitylibrary.org/page/10091040>
- Könnecker G, Keegan BF (1973) In situ behavioural studies on echinoderm aggregations. *Helgoländer wissenschaftliche Meeresuntersuchungen* 24: 157–162. <https://doi.org/10.1007/BF01609508>
- Lacey KM, McCormack GP, Keegan BF, Powell R (2005) Phylogenetic relationships within the class Holothuroidea, inferred from 18S rRNA gene data. *Marine Biology* 147: 1149–1154. <https://doi.org/10.1007/s00227-005-0009-2>
- Lieberkind I (1929) Echinodermata. *The Zoology of the Faroes* 3(1): 1–20.
- Ludwig HL (1875) Beiträge zur Kenntniss der Holothurien. *Arbeiten aus dem zoologisch-zootomischen Institut Würzburg*. 2: 77–118. [pls 6, 7.]
- Massy AL (1920) The Holothuroidea of the Coasts of Ireland. *The Scientific Proceedings of the Royal Dublin Society* 16: 37–62.
- Massin C (1996) Results of the Rumphius Biohistorical Expedition to Ambon (19990). Part 4. The Holothuroidea (Echinodermata) collected at Amon during the Rumphius Biohistorical Expedition. *Zoologische Verhandelingen* 307: 1–53.
- McKenzie DJ (1991) The taxonomy and natural history of north European dendrochirote holothurians. *Journal of Natural History* 25: 123–171. <https://doi.org/10.1080/00222939100770091>
- McKenzie DJ (1997) Echinodermata. In: Howson CM, Picton BE (Eds) *The Species Directory of the Marine Fauna and Flora of the British Isles and Surrounding Seas*. Ulster Museum and the Marine Conservation Society, Belfast and Ross-on-Wye, 268–276.
- Michonneau F, Paulay G (2014) Revision of the genus *Phyrella* (Holothuroidea: Dendrochirotida) with the description of a new species from Guam. *Zootaxa* 3760(2): 101–140. <https://doi.org/10.11646/zootaxa.3760.2.1>
- Miller AK, Kerr AM, Paulay G, Reich M, Wilson NG, Carvajal J, Rouse GW (2017) Molecular phylogeny of extant Holothuroidea (Echinodermata). *Molecular Phylogeny and Evolution* 111: 110–131. <https://doi.org/10.1016/j.ympev.2017.02.014>
- Mortensen Th (1924) Pighude (Echinoderm). *Danmarks Fauna* 27. G.E.C. Gads Forlag, København, 207–256.
- Mortensen Th (1927) *Handbook of the Echinoderms of the British Isles*. Oxford University Press, Oxford, 71 pp. <https://www.biodiversitylibrary.org/page/6277293>
- Moyse J, Tyler PA (1990) Echinodermata. In: Hayward PJ, Ryland JS (Eds) *The Marine Fauna of the British Isles and North-West Europe* (Vol. 2). Clarendon Press, Oxford, 839–871.
- Ohshima H (1912) On the system of Phyllophorinae with description of the species found in Japan *Annotationes zoologicae japonenses* 8(1): 53–96. [pl. 1.]

- Östergren H (1898) Zur Anatomie der Dendrochiroten, nebst Beschreibungen neuer Arten. Zoologischer Anzeiger 21(551): 10–110. [133–36.]
- Östergren H (1902) The Holothuroidea of Northern Norway. Bergens Museum Aarborg 9: 1–34.
- Östergren H (1904) *Pseudocucumis mixta*. II. Mitteilungen aus Museen, Instituten usw. I Naturvetenskapliga Studentsällskapet, Uppsala. Zoologische Sektion, Sitzung den 27 März 1903: e659.
- Östergren H (1906) Einige Bemerkungen über die westeuropäischen *Pseudocucumis*- und *Phyllophorus*-Arten. Arkiv för Zoologi 3(16): 1–24.
- Östergren H (1907) Zur Phylogenie und Systematik der Seewalzen Särtryck ur Zoologiska Studier Tillägnade Professor T. Tullberg. Almqvist & Wiksells Buchdruckerei-Aktiengesellschaft, Uppsala, 191–215.
- Pawson DL, Fell HB (1965) A revised classification of the dendrochirote holothurians. Brevoria 214: 1–7.
- Picton BE (1993) A Field Guide to the Echinoderms of the British Isles. IMMEL Publications, London, 96 pp.
- Samyn Y, Thandar AS (2003) *Massinium*, a new genus in the holothuroid family Phyllophoridae (Echinodermata: Holothuroidea: Dendrochirotida) with description of a new south-west Indian Ocean species *M. maculosum*. Belgian Journal of Zoology 133: 137–144.
- Samyn Y, VandenSpiegel D, Massin C (2006) Taxonomie des holothuries des Comores. Abc Taxa 1: 1–130.
- Selenka (1867) Beiträge zur Anatomie und Systematik der Holothurien. Zeitschrift für wissenschaftliche Zoologie 17(2): 291–374. [pls XVII–XX.]
- Semper C (1867) Holothurien. In: Semper C (Ed.) Reisen im Archipel der Philippinen. Zweiter Theil. Wissenschaftliche Resultate. Erster Band. W. Engelmann, Leipzig, 288 pp. [40 pls] [1867 = pp. 1–70, pls 1–15]
- Southward EC, Campbell AC (2006) Echinoderms. In: Crothers JH, Hayward PJ (Eds) Synopses of the British Fauna (New Series) 56. The Linnean Society of London and The estuarine and Coastal Sciences Association, Shrewsbury, 272 pp.
- Smirnov AV (2012) System of the class Holothuroidea. Paleontological Journal 46(8): 793–832. <https://doi.org/10.1134/S0031030112080126>
- Smith TB (1983) Tentacular ultrastructure and feeding behaviour of *Neopentadactyla mixta* (Holothuroidea: Dendrochirota). Journal of the marine biological Association of the United Kingdom 63(2): 301–311. <https://doi.org/10.1017/S0025315400070697>
- Solis-Marin FA, Conejeres-Vargas CA, Caballero-Ochoa AA, Arriaga-Ochoa JA (2019) *Epitomapta simentalae* sp. n., a new species of apodous sea cucumber from the Central Eastern Pacific coast of Mexico (Echinodermata, Holothuroidea, Apodida). ZooKeys 817: 1–9. <https://doi.org/10.3897/zookeys.817.29406>
- Thandar AS (1989) The sclerodactylid holothurians of southern Africa, with the erection of one new subfamily and two new genera (Echinodermata: Holothuroidea). South African Journal of Zoology 24(4): 290–304. <https://doi.org/10.1080/02541858.1989.11448167>
- Thandar AS (1990) The phyllophorid holothurians of southern Africa with the erection of a new genus. South African Journal of Zoology 25(4): 207–223. <https://doi.org/10.1080/02541858.1990.11448215>
- Wood E (1988) Sea Life of Britain & Ireland. Marine Conservation Society, IMMEL Publishing, London, 240 pp.