

**Zooplankton.**

**Sheet 28.**

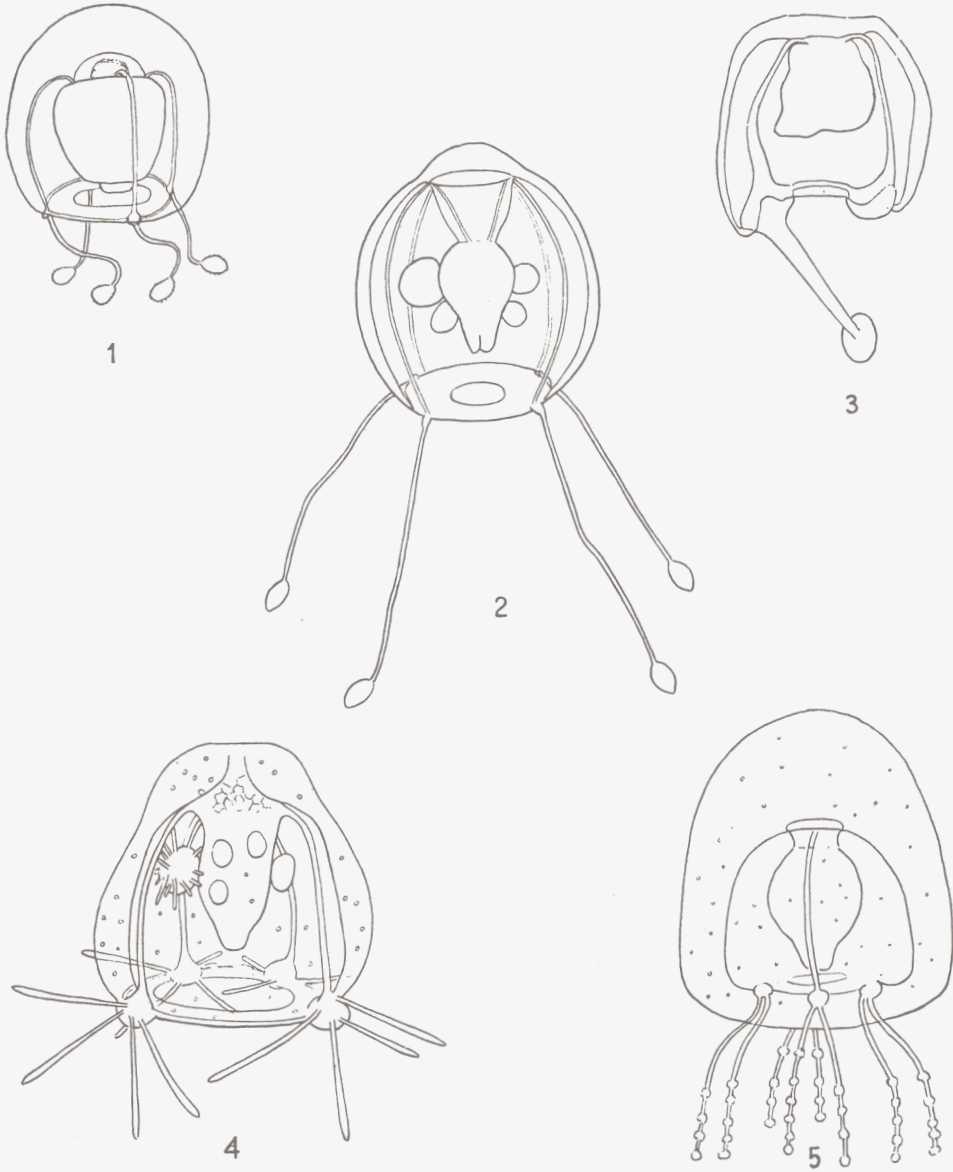
**HYDROMEDUSAE**

**Family: Tubulariidae (contd.)**

**Family: Margelopsidae**

(By F. S. Russell)

**1950.**



1. *Plotocnide borealis*. 2. *Eucodonium brownei*. 3. *Paragotoea bathybia*. 4. *Margelopsis haeckeli*.  
5. *Margelopsis hartlaubi*.

**Family TUBULARIIDAE (continued).**

Mouth circular, simple. Gonads completely surrounding stomach. No ocelli on marginal tentacle bulbs.

**Genus PLOTOCNIDE Wagner:**

No pointed apical process; four tentacles each with single terminal swelling; scattered nematocysts on exumbrella surface.

**Genus EUCODONIUM Hartlaub:**

No pointed apical process; four tentacles each with single terminal swelling; stomachal peduncle present; no exumbrella nematocyst tracks.

**Genus PARAGOTOEAE Kramp:**

No pointed apical process; one tentacle with single terminal swelling; no exumbrella nematocyst tracks.

Species	Number of tentacles	Nematocyst armature on tentacles	Non-tentacular bulbs	Asexual budding	Maximum height	Remarks
1. <i>Plotocnide borealis</i> Wagner	4	single terminal swelling	—	—	mm. 3	—
2. <i>Eucodonium brownei</i> Hartlaub	4	single terminal swelling	—	From stomach	1	Stomach with peduncle
3. <i>Paragotoea bathybia</i> Kramp	1	single terminal swelling	3	—	1.3	—

**Family MARGELOPSIDAE.**

Mouth circular simple. Gonads completely surrounding stomach. No ocelli. Marginal tentacles in groups.

**Genus MARGELOPSIS Hartlaub:**

Four perradial groups of marginal tentacles.

4. *Margelopsis haeckeli* Hartlaub: 3—4 tentacles in each marginal group; umbrella 2 mm. high.
5. *Margelopsis hartlaubi* Browne: 2 tentacles in each marginal group; umbrella 3 mm. high.

**Further Information on Identification.**

1. *P. borealis* \*): Jaschnov, 1939, pp. 108—113, Figs. 1—4; Kramp, 1942, p. 22, Fig. 5.
2. *E. brownei*: Browne, 1896, p. 473, Pl. XVI, Fig. 2; Hartlaub, 1907, p. 71, Fig. 67; ? Neppi & Stiasny, 1913, p. 14, Pl. I, Fig. 6.
3. *P. bathybia*: Kramp, 1942, p. 26, Fig. 7.
4. *M. haeckeli*: Hartlaub, 1897, p. 482, Pl. XVIb, Figs. 12—18; 1907, pp. 89 & 91, Figs. 84—86.
5. *M. hartlaubi*: Browne, 1903, p. 10, Pl. I, Fig. 2, Pl. III, Fig. 3; Hartlaub, 1907, p. 92, Fig. 89.

\*) N.B. There is also a species known as *Plotocnide incertum* (Linko) described by Linko (1900) from the White Sea but not recorded since. It differs from *P. borealis* in having a stomachal peduncle and bands of nematocysts on the tentacles. It is not in fact a *Plotocnide* (Kramp, 1942): see Hartlaub, 1907, p. 70, Fig. 66.

**Distribution**

**Species**

Gulf of Bothnia .....	—
Gulf of Finland .....	—
Baltic proper .....	—
Belt Sea .....	—
Kattegat .....	2
Skagerak .....	—
Northern North Sea .....	5
Southern North Sea .....	4
English Channel (eastern) .....	—
English Channel (western) .....	2
Bristol Channel & Irish Sea .....	—
South & West Ireland and Atlantic .....	3*)
Faroe Shetland Area .....	—
Faroe Iceland Area .....	—
Norwegian Sea .....	—
Barents Sea .....	1

\*) Recorded so far only from Davis Strait, but may be a deep-sea Atlantic species.

**References.**

- |   |  |
|---|--|
| Browne, Edward T., 1896. Proc. Zool. Soc. London, p. 459.   | Jaschnov, W. A., 1939. Bull. Soc. Nat. Moscou, S. Biologie, Tome XLVIII (2—3), p. 107.                   |
| — 1903. Bergens Mus. Aarb., No. 4, p. 1.  | Kramp, P. L., 1942. Medd. Grønland, Bd. 81, Nr. 1, p. 1.   |
| Hartlaub, Clemens, 1897. Wiss. Meresuntersuch., N.F., Bd. II, Abt. Helgoland, Heft 1, X, p. 449.                  | Linko, A., 1900. Trav. Soc. Imp. Nat. St.-Petersbourg, Tome XXIX, livr. 4 (1899), p. 137.                |
| — 1907. Nordisches Plankton, Lief. 6, XII, Craspedote Medusen, Teil 1, Lief. 1, Codoniden und Cladonemiden, p. 1. | Neppi, Valeria & Gustav Stiasny, 1913. Arb. Zool. Inst. Univ. Wien u. Zool. Stat. Triest, Bd. XX, p. 23. |