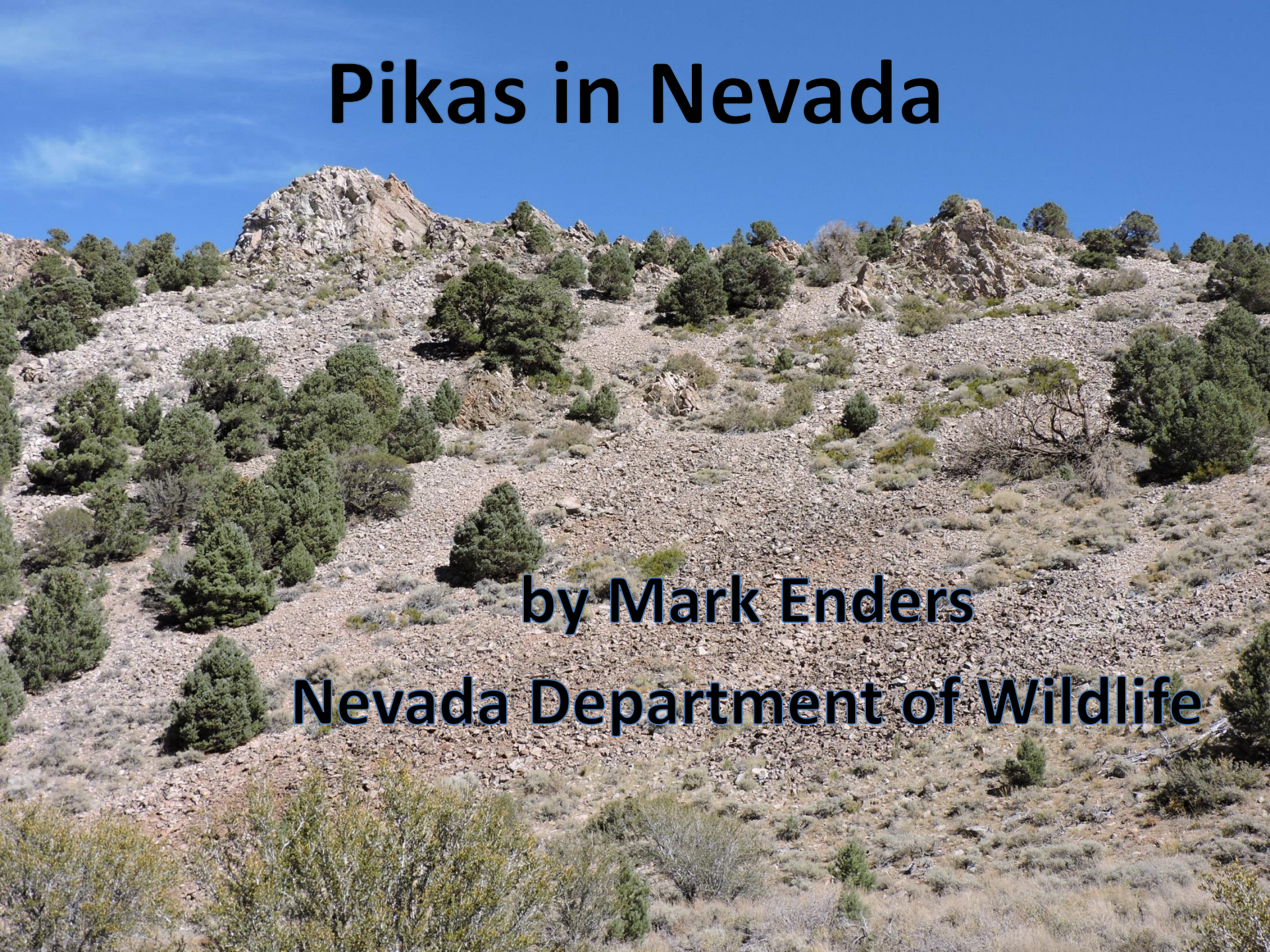


Pikas in Nevada

by Mark Enders

Nevada Department of Wildlife



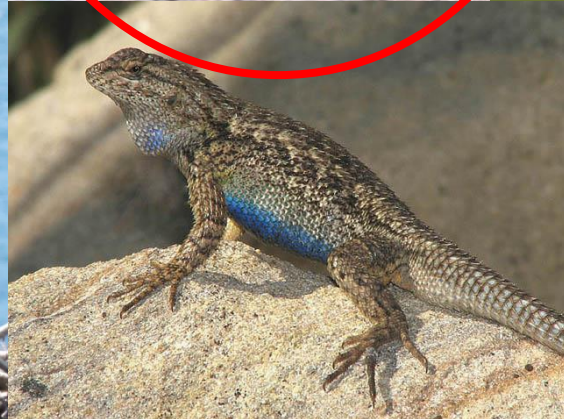
NDOW - Wildlife Diversity Division

- Non-game species



NDOW - Wildlife Diversity Division

- Non-game species



American pika (*Ochotona princeps*)



Photo: Pika in the Ruby Mountains (M.R. Jeffress)

Where do pikas occur?



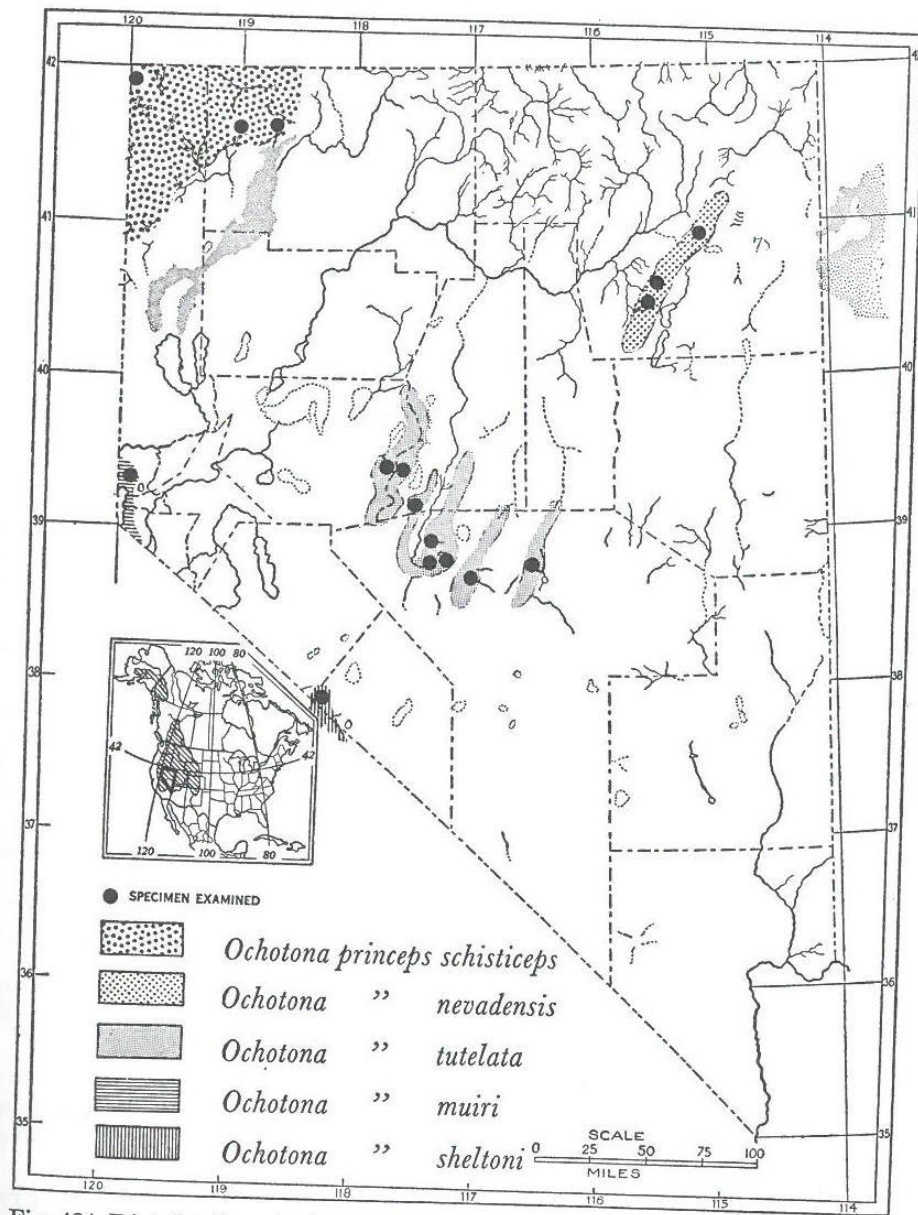


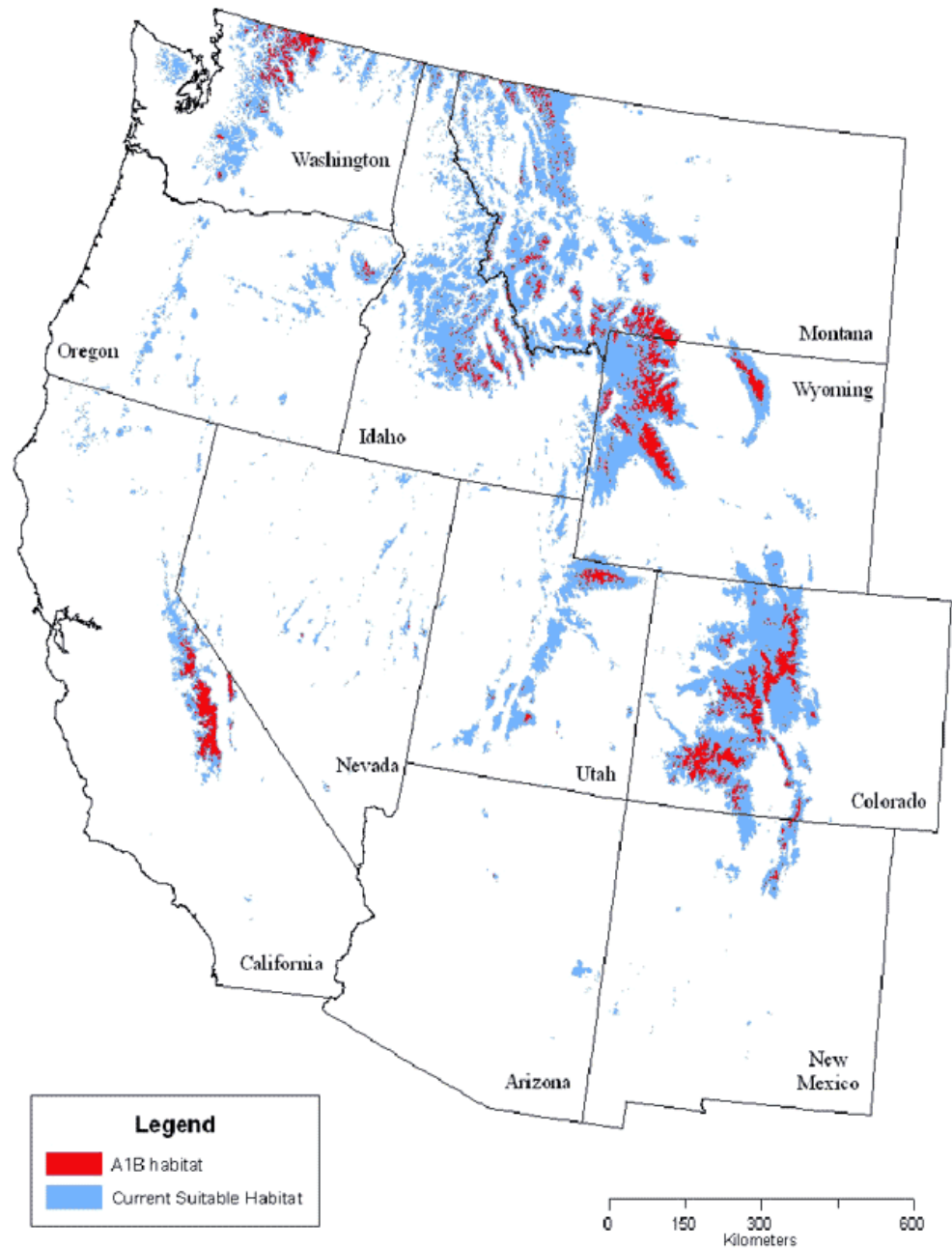
Fig. 424. Distribution of subspecies of the pika, *Ochotona princeps*, with insert showing range of the species.

American pika (*Ochotona princeps*)

- NDOW
 - Species of Conservation Priority
- Protected in Nevada
 - NAC 503.030
- BLM Sensitive



Photo: Pika in the Ruby Mountains (M.R. Jeffress)





Statewide Surveys

- Started in 2009
 - NDOW & USFWS
- Determine current distribution
 - Latitudinal
 - Elevational
- Focus of surveys
 - Areas not previously surveyed
 - Update and expand known occupied areas

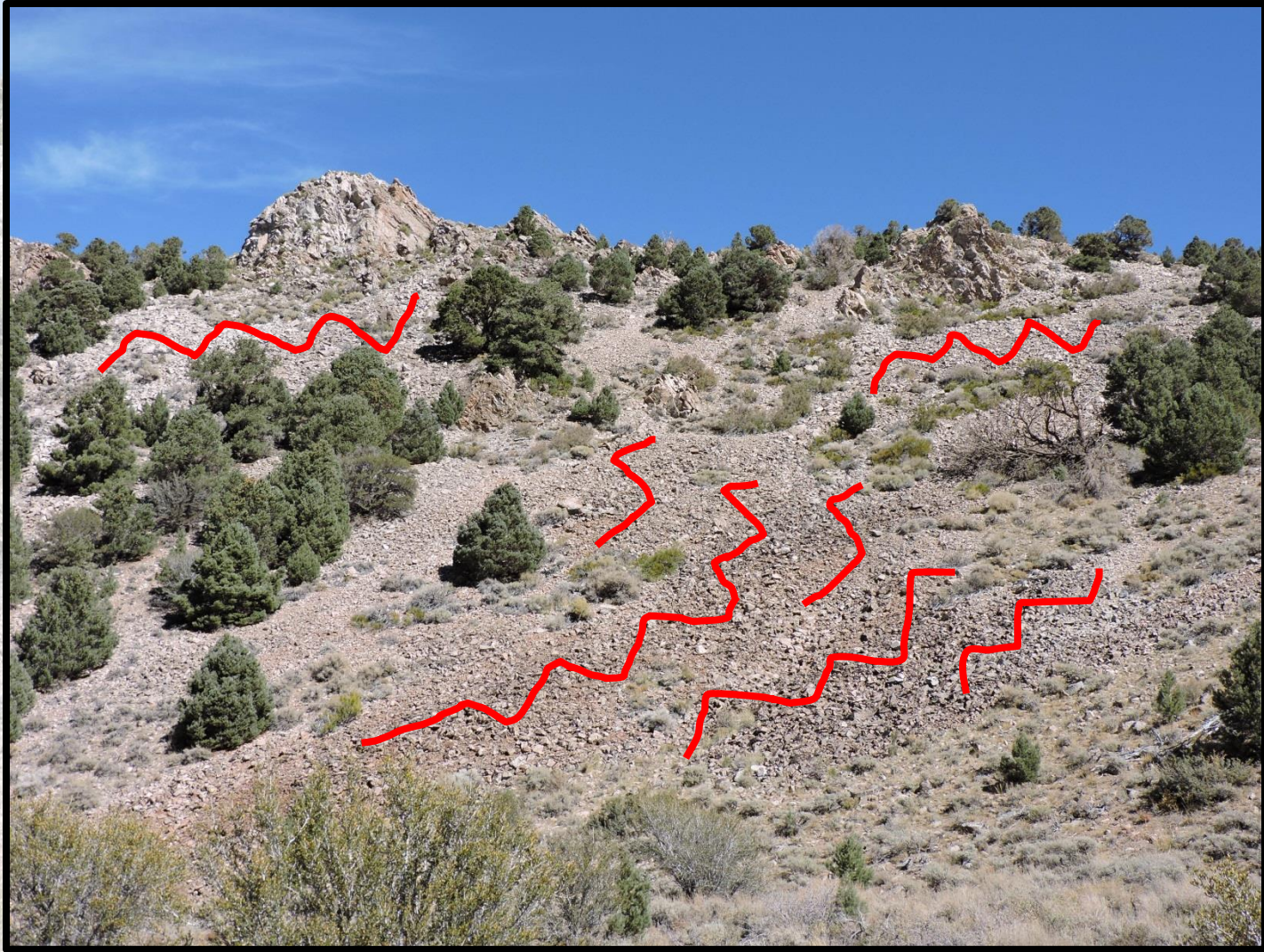
Survey Methods



Survey Methods



Survey Methods



Survey Methods



Survey Methods



Survey Methods



2014-15 Statewide Surveys

- 16 mountain ranges

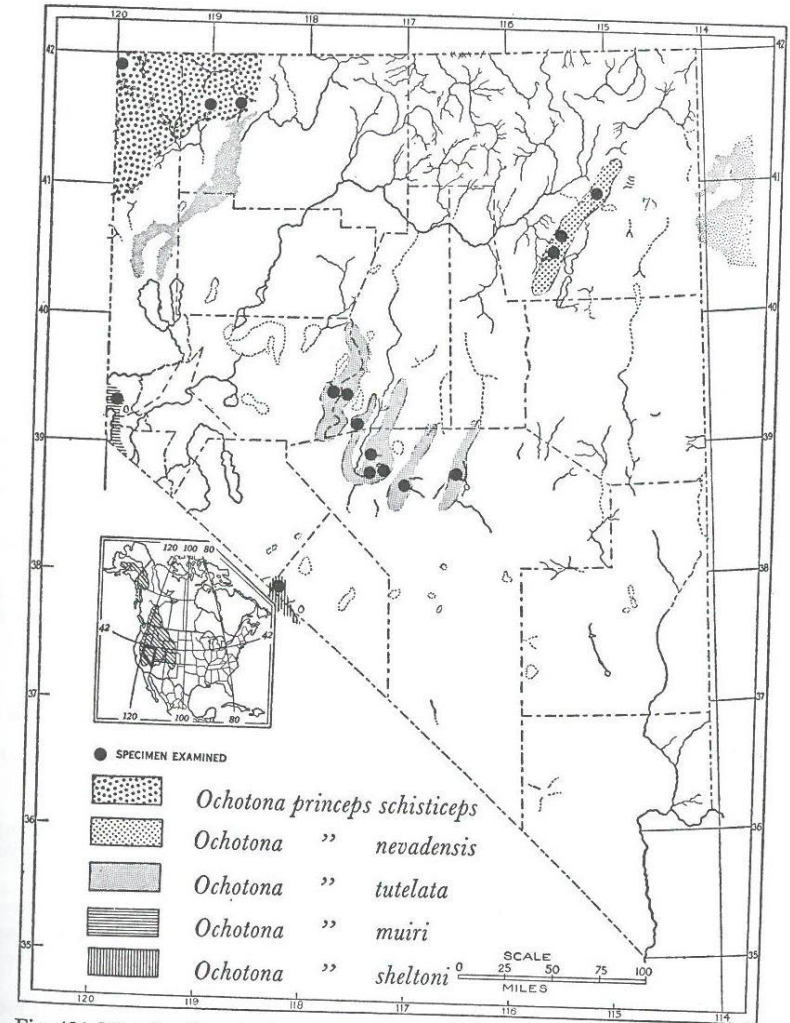
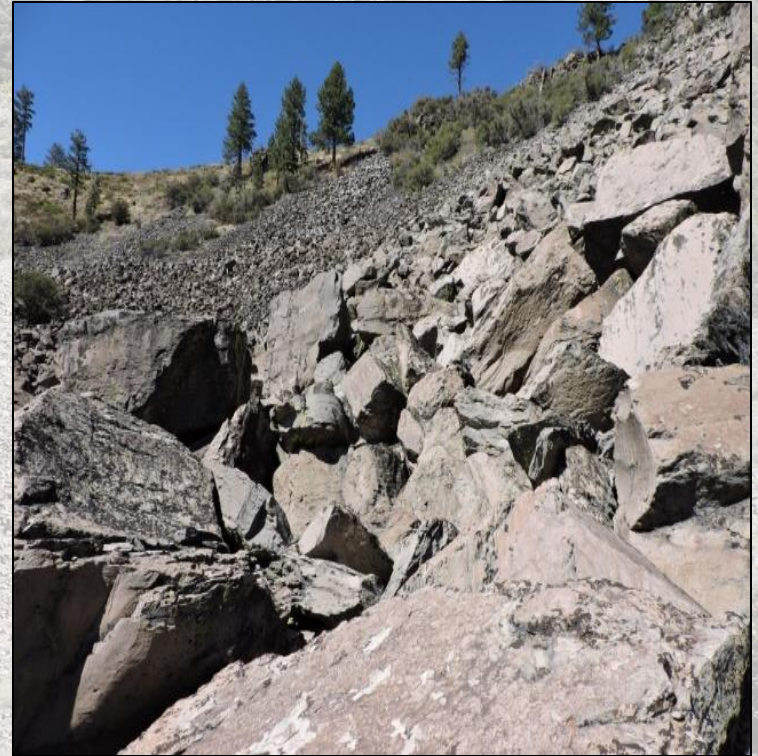


Fig. 424. Distribution of subspecies of the pika, *Ochotona princeps*, with insert showing range of the species.

Carson Range



Carson Range



Carson Range



Carson Range



Sweetwater Mountains



Pine Forest Range



Toiyabe Range



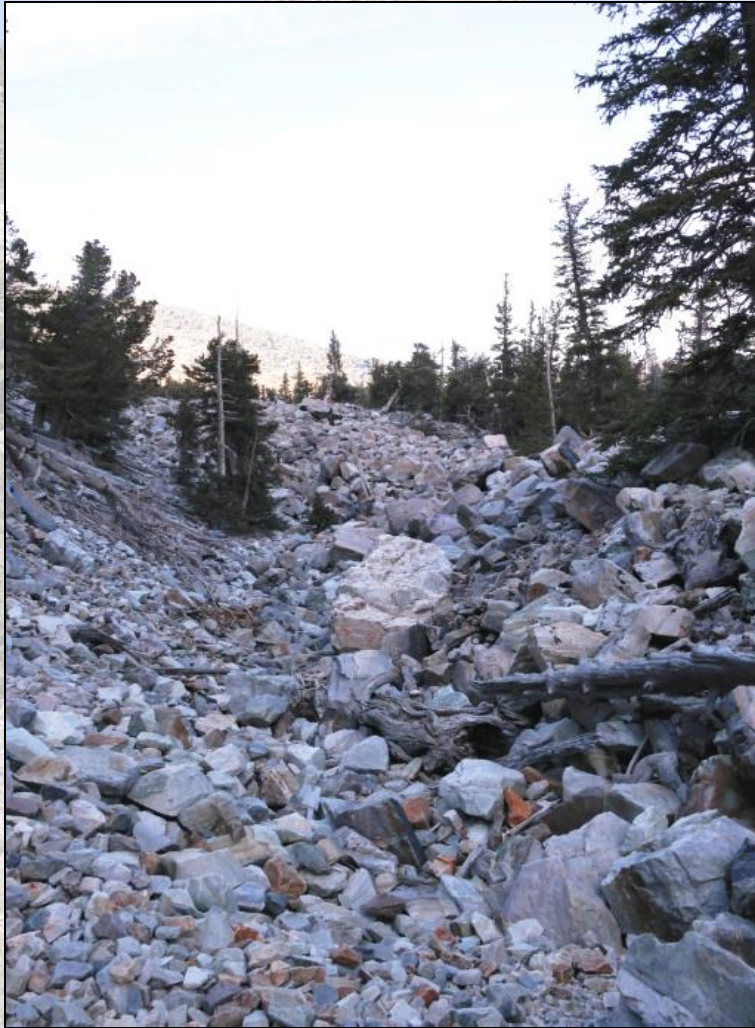
Ruby Mountains



Roberts Mountains



Snake Range



Pequop Mountains



NW Nevada



Survey Results

- New occupied sites
- Likely extirpated sites
- Unoccupied sites

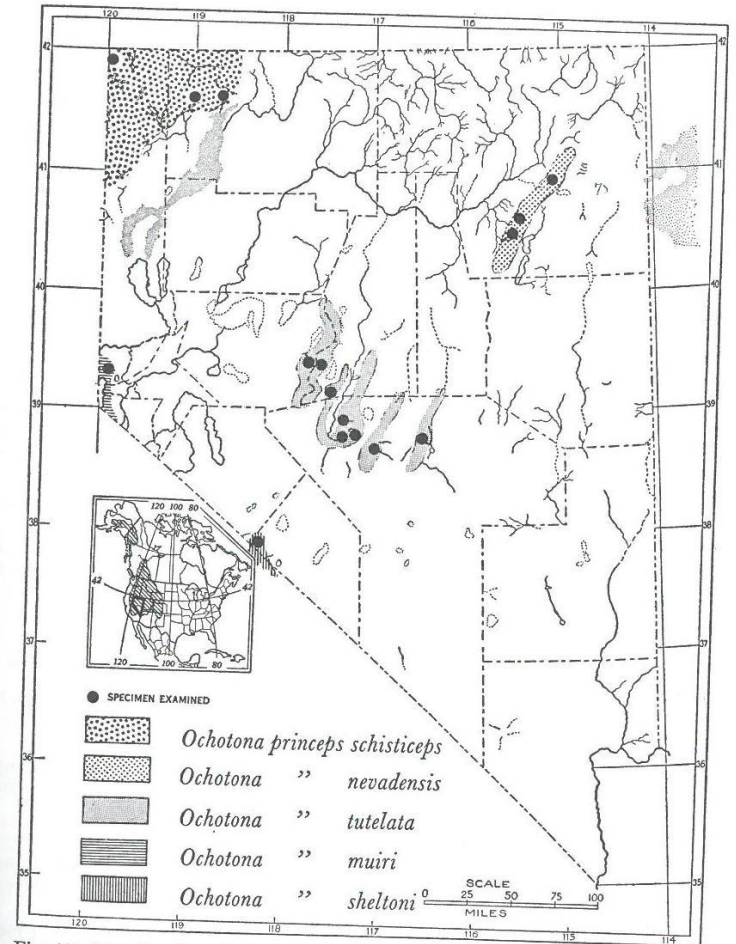


Fig. 424. Distribution of subspecies of the pika, *Ochotona princeps*, with insert showing range of the species.

Implications

- Land management decisions
 - Resource management plans
 - Potential development projects
- Genetics
 - Population connectivity
 - Identify movement corridors
 - Identify vulnerable populations
- Climate
 - Extirpated sites

Future Plans

- Continue to survey
 - Areas not previously surveyed
 - Update and expand known occupied areas
- Make repeat visits
- Pika atlas

Questions?

