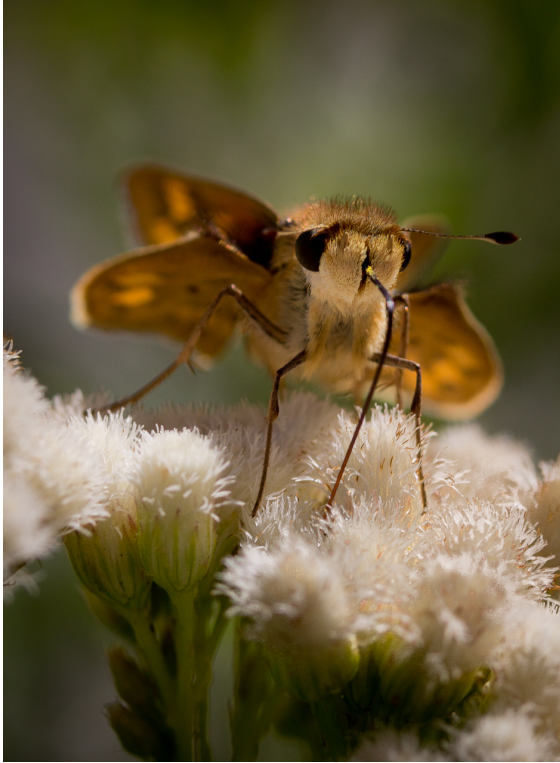


# Marsh Baccharis

Asteraceae

*Baccharis glutinosa*



## In the Garden

This spreading herbaceous perennial grows to 3 feet and requires moist soil for best performance.

Plant in the background of your native garden to attract wildlife, and enjoy having a plant that deer won't touch.

The plant's nectar is a source for predatory wasps and small native butterflies. Flowers late summer.

**Sun:** Full Sun, Part Shade

**Water:** Moderate, High

**Soil:** Clay, Loam, Sand

**Other:** Attracts Butterflies, Deer Resistant

## Ecological Value:

The plant's nectar is a source for predatory wasps and small native butterflies. Used by the following adult butterflies: American Painted Lady, Acmon Blue, and Buckeye Butterfly.

## Historical Uses:

Ohlone and Luiseno people used to disinfect wounds, to wash sores and wounds, to treat boils, and an infusion of the plant were taken for kidney ailments.

## Native Distribution:

Native to California, Oregon and Mexico.

## Elevation:

Elevation: Between 0 and 1500 feet

## Plant Communities:

Coastal Salt Marsh, Coastal Sage Scrub, Northern Coastal Scrub, Foothill Woodland, Redwood and Yellow Pine Forest

## Habitat:

Streambanks, coastal, salt-marsh

