

# Hermann Emil Louis Fischer 1852-1919

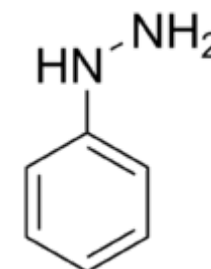
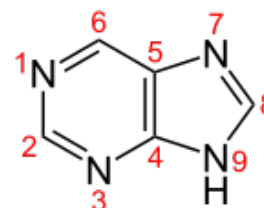
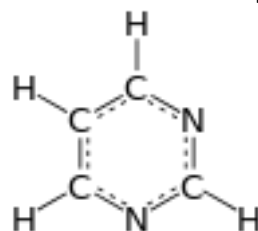
Germany

Organic chemist

Nobel 1902

Died of cancer, maybe due to exposure to aromatic chemicals

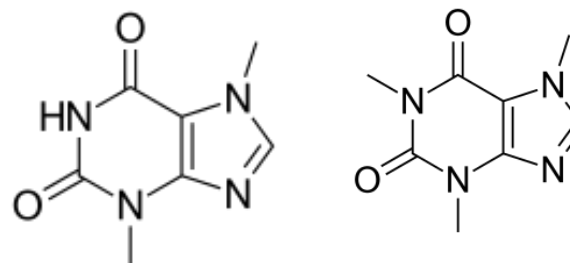
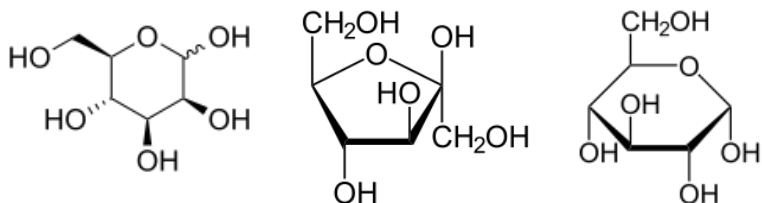
Cyclic compounds of nitrogen - basic structure for a variety of biological compounds such as DNA bases purines and pyrimidines



Phenyl hydrazine  
Important in synthesis of drugs and paints.

The are similar to Caffeine & theobromine in coffee, tea & cocoa

Structure of sugars-  
Glucose, Fructose, Manose



Separation and isolation of the amino acids composing proteins, and the peptide bond building a chain