

Ukwazi banzi ngoMliloneziKhukhula Ukhuphiswano lwamaBali nobuGcisa



Molweni makhwenkwe nani mantombazana! Igama lam ndinguGerry iNdlulamthi. Intamo yam ende indinceda ukuba ndibone iintlekele zisekude, ngoko ke ndisoloko ndizilungele naziphi na iintlekele. Ukhankaso lokwazisa banzi ngomlilo nangezikhukhula lulapha kwakhona kwaye ndifuna uthathe inxaxheba

kukhuphiswano lwethu. Into ekufuneka nje uyenze kukubhala ibali okanye uzobe umfanekiso elingendlela ongenza ngayo xa kukho imililo nezikhukhula. Khumbula ukuxelela abahlobo nezalamane zakho ukuba batsalele ku-10177 (kumxeba wasendlini) okanye ku-112 (kwiselula) xa kuqhambuka umlilo okanye izikhukhula.

linkcukacha zoKhuphiswano:

- o Ukhuphiswano lobugcisa luvuleleke kuphela kubafundi bebakala loku 1-3.
- o Ukuphiswano lwamabali luvuleleke kuphela kwabebakala lesi- 4-7.
- o Ubugcisa nebali kufuneka bube ngokuba siwunqanda njani umlilo nezikhukhula.
- o Kungasetyenziswa nantoni na kukhuphiswano lobugcisa, umzekelo ipeyinti okanye iikhrayoni.
- o Amabali angabhalwa ngesiNgesi, isiXhosa okanye iAfrikansi.
- o Abaphumelele ibhaso loku-1, lesi-2 nelesi-3 kulwimi ngalunye baza kufumana amabhaso.
- o Amabali akufunekanga abenamagama angaphezu kwama-200.
- o Amabali nobuGcisa aza kugwetywa:
 - 1) Ngokobuchule, 2) Ulwazi nokuqonda iingcebiso zomlilo nezikhukhula, (3) Nokuba abengabakhethekileyo

Umhla wokuVula: 1 kweyoMsintsi 2010

Umhla wokuvala: 15 kweyeDwarha 2010

Ukwazi banzi ngoMliloneziKhukhula Ukhuphiswano lwamaBali nobuGcisa



Molweni makhwenkwe nani mantombazana! Igama lam ndinguGerry iNdlulamthi. Intamo yam ende indinceda ukuba ndibone iintlekele zisekude, ngoko ke ndisoloko ndizilungele naziphi na iintlekele. Ukhankaso lokwazisa banzi ngomlilo nangezikhukhula lulapha kwakhona kwaye ndifuna uthathe inxaxheba

kukhuphiswano lwethu. Into ekufuneka nje uyenze kukubhala ibali okanye uzobe umfanekiso elingendlela ongenza ngayo xa kukho imililo nezikhukhula. Khumbula ukuxelela abahlobo nezalamane zakho ukuba batsalele ku-10177 (kumxeba wasendlini) okanye ku-112 (kwiselula) xa kuqhambuka umlilo okanye izikhukhula.

linkcukacha zoKhuphiswano:

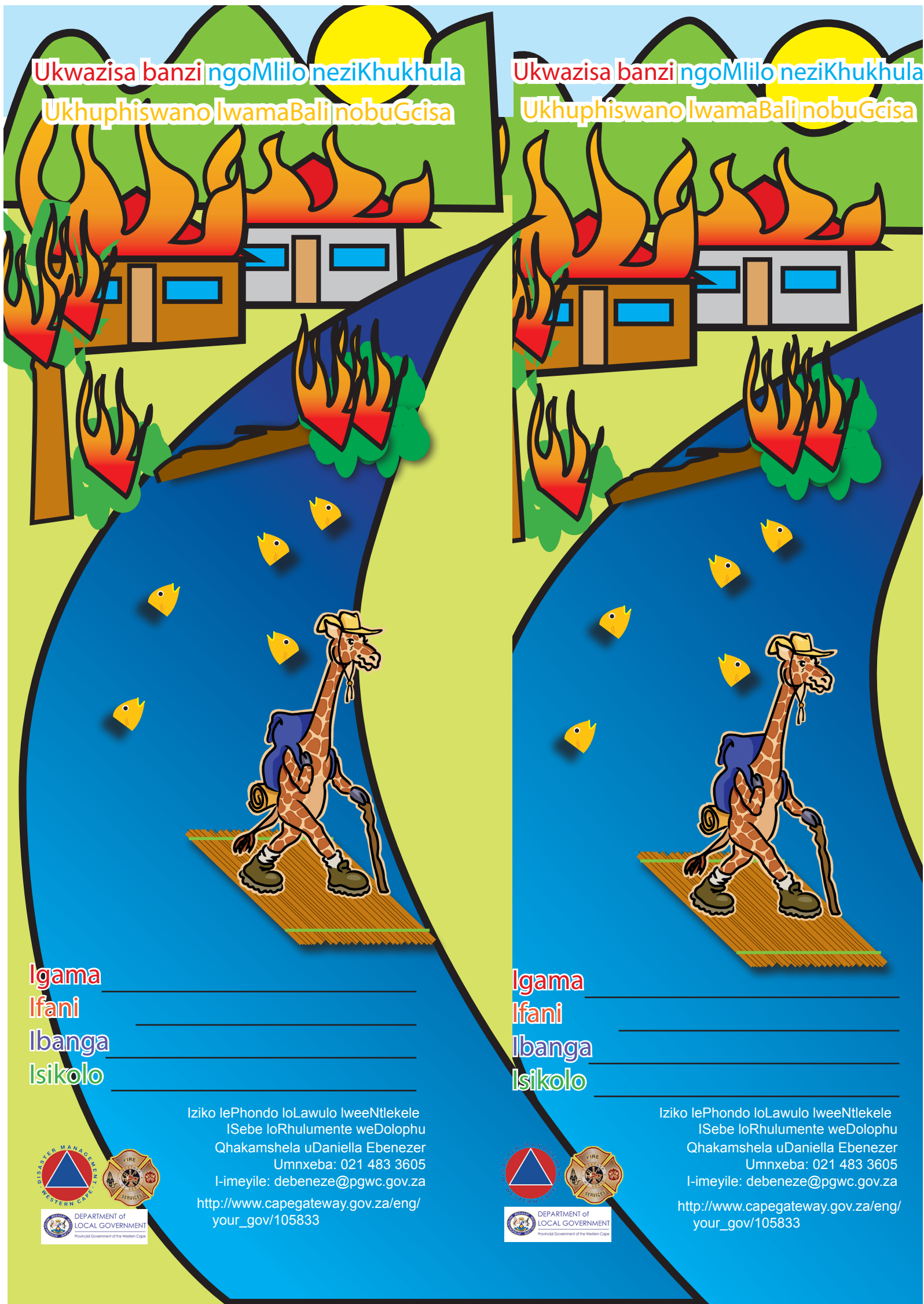
- o Ukhuphiswano lobugcisa luvuleleke kuphela kubafundi bebakala loku 1-3.
- o Ukuphiswano lwamabali luvuleleke kuphela kwabebakala lesi- 4-7.
- o Ubugcisa nebali kufuneka bube ngokuba siwunqanda njani umlilo nezikhukhula.
- o Kungasetyenziswa nantoni na kukhuphiswano lobugcisa, umzekelo ipeyinti okanye iikhrayoni.
- o Amabali angabhalwa ngesiNgesi, isiXhosa okanye iAfrikansi.
- o Abaphumelele ibhaso loku-1, lesi-2 nelesi-3 kulwimi ngalunye baza kufumana amabhaso.
- o Amabali akufunekanga abenamagama angaphezu kwama-200.
- o Amabali nobuGcisa aza kugwetywa:
 - 1) Ngokobuchule, 2) Ulwazi nokuqonda iingcebiso zomlilo nezikhukhula, (3) Nokuba abengabakhethekileyo

Umhla wokuVula: 1 kweyoMsintsi 2010

Umhla wokuvala: 15 kweyeDwarha 2010

Ukwazisa banzi ngoMlilo neziKhukhula
Ukhuphiswano lwamaBali nobuGcisa

Ukwazisa banzi ngoMlilo neziKhukhula
Ukhuphiswano lwamaBali nobuGcisa



Igama _____
Ifani _____
Ibanga _____
Isikolo _____

Igama _____
Ifani _____
Ibanga _____
Isikolo _____

Iziko lePhondo loLawulo lweeNtlekele
ISebe loRhulumente weDolophu
Qhakamshela uDaniella Ebenezer
Umnxeba: 021 483 3605
I-imeyile: debeneze@pgwc.gov.za
http://www.capegateway.gov.za/eng/your_gov/105833

Iziko lePhondo loLawulo lweeNtlekele
ISebe loRhulumente weDolophu
Qhakamshela uDaniella Ebenezer
Umnxeba: 021 483 3605
I-imeyile: debeneze@pgwc.gov.za
http://www.capegateway.gov.za/eng/your_gov/105833



DEPARTMENT of LOCAL GOVERNMENT
Provincial Government of the Western Cape

DEPARTMENT of LOCAL GOVERNMENT
Provincial Government of the Western Cape