

An aerial photograph of the Westtown School campus. The main building is a large, multi-story red brick structure with a complex roofline and numerous chimneys. To its right is a more modern, multi-story building with a white facade and large windows. The campus is surrounded by lush green trees and lawns. In the background, a golf course is visible, along with rolling hills and a small body of water. The sky is clear and blue.

WESTTOWN SCHOOL

BEHIND THE NUMBERS

2020-2021 ANNUAL REPORT

Dear Friends,

The feature article in the summer issue of *The Westonian*, “The Year of Living Cautiously,” described the combination of creativity, frustration, collaboration, and thoughtful care we have experienced at Westtown since March of 2020. As the pandemic and Westtown both evolve, I continue to be inspired by the deep commitment of our faculty and staff, the resilience of our students, and the persistent joy there is to be found throughout our community in the midst of ongoing challenges.

Our donors, too, continue to rise to the challenge of making this Westtown education available and affordable for each of our students. This report recognizes the generosity of Westtown alums, parents, parents of alums, grandparents, and friends. Your support of our community has lifted up the Westtown mission and vision and increased our financial capacity to assist future generations. Westtown deeply appreciates gifts of all sizes, and we value participation at every level. The pages that follow describe and honor all those who made gifts to Westtown from July 1, 2020 through June 30, 2021.

This past year was extraordinary in many ways, including philanthropically. In Fiscal Year '21, \$10.8 million was contributed to Westtown, far surpassing our \$6.3 million yearly average. Donations to the Westtown Fund exceeded \$1.3 million, including gifts to support financial aid, program, and operations. In addition, donors to Pennsylvania's Educational Improvement Tax Credit Program gave a total of \$434,000, directly impacting our scholarship program. Realized bequests and other significant gifts supported scholarships, our Full Access program, the Center for the Living Arts renovation, and other campus priorities.

Westtown is bolstered by a strong endowment, valued at \$129 million as of June 30, 2021, and includes more than 100 individual endowed funds created by generations of donors. The Westtown endowment provides critical and enduring funding for financial aid, professional development and faculty compensation, facilities and technology, sustainability, student programs, campus operations, and more.

Please accept my heartfelt gratitude to you, our donors, volunteers, and all of our friends who gave generously last year of your time, talent, and treasures.

Sincerely,

CHRIS BENBOW '90

Head of School

Annual Report Team

Lynette Assarsson
Director of Publications

Kris Batley '81
Director of Donor Relations

Becky Bernstein
Director of Advancement Services

Ray Slater
Director of Planned Giving

Courtney Tyus
Director of Annual Giving

Ellen Urbanski
Dean of Advancement

Amanda Young
Director of Capital Giving

Head of School
Chris Benbow '90

Design
Aldeia / www.aldeia.design

Principal Photography
Ed Cunicelli

2020-2021 Board of Trustees

Martha Brown Bryans '68, P'92/'94, *Clerk*

Beah Burger-Lenehan '02

Michelle Caughey '71, P'99/'01/'06/'08

Luis Castillo '80, P'16/'19

Diana Evans '95

Nneka Nwosu Faison '01

Gary Holloway, Jr. P'22/'25

Ann Hutton P'08

Sanjay Jain P'22/'24

Jess Lord '90

Rob McLear P'18/'20/'26, *Associate Clerk*

Elizabeth Gilbert Osterman '73

Jim Perkins '56, P'84/'86

Keith Reeves '84

Anne Roche P'06/'08/'10, *Recording Clerk*

Kevin Roose '05

Daryl Shore '99

Mike Sicoli '88, *Finance Clerk, Treasurer*

Danielle Toaltoan '03

Charlotte Triefus P'16/'17/'21

Kristen Waterfiedl P'19/'27/'27

Max Yeh '87

Emeritus Trustees

David Barclay '52, P'76/'77

Tim Barnard P'91/'92/'98

Bart Harrison '47, P'75

Arthur Larrabee '60, P'91

Kate Niles McLean '57, P'82/'84/'90



**BEHIND
THE
NUMBERS**
2020-2021
ANNUAL REPORT

02
AT A GLANCE

04
DONOR PROFILES

10
YEAR IN REVIEW

12
SEEN AROUND CAMPUS

14
ENDOWMENT Q+A

16
BY THE NUMBERS

18
DONOR LISTS

WESTTOWN SCHOOL



MISSION STATEMENT

Guided by the essential Quaker calling to seek out and honor that of God in each of us, Westtown School challenges its students to realize their individual gifts while learning and living together in a diverse community. Westtown inspires and prepares its graduates to be stewards and leaders of a better world.

AT A GLANCE

Tuition

\$23,750
PRE-K & KINDERGARTEN

\$29,280
GRADES 1 – 5

\$34,275
GRADES 6 – 8

\$39,720
GRADES 9 – 12 (DAY)

\$63,650
GRADES 9 – 12 (BOARDING)

Financial

\$28.2
MILLION
OPERATING BUDGET

\$10.5
MILLION
FINANCIAL AID

329
STUDENTS
[47.4%]
RECEIVE AID

\$129
MILLION
ENDOWMENT

Faculty and Staff

107
TEACHING
FACULTY
(FULL & PART
TIME)

24
QUAKER
TEACHING
FACULTY

67
FACULTY/STAFF
LIVING ON
CAMPUS

26
ALUMS WORKING
AT WESTTOWN

6:1
STUDENT TO
TEACHER RATIO

Student Body Composition

63
[9.1%]
LEGACY STUDENTS

46
[6.6%]
QUAKER STUDENTS

234
[33.7%]
BIPOC (BLACK, INDIGENOUS
AND PEOPLE OF COLOR)*

47
[6.8%]
INTERNATIONAL STUDENTS

**does not include international students*

Opening Day Enrollment

194 LOWER SCHOOL (Pre-K – 5th Grade)	128 MIDDLE SCHOOL (6th – 8th Grade)	372 UPPER SCHOOL (9th – 12th Grade)
253 BOARDING	119 DAY	694 TOTAL

12 Countries Represented

BAHAMAS
BERMUDA
BRAZIL
CAMEROON
CANADA
CHINA
DOMINICAN REPUBLIC
HONG KONG
JAPAN
SOUTH KOREA
UNITED KINGDOM
VIETNAM





CLASS OF 2021 / COLLEGE ENROLLMENT

Boston College
Boston University
Bowdoin College
Bryn Mawr College
Bucknell University
Case Western Reserve University
Colgate University
College of Charleston
Dartmouth College
Davidson College
Dickinson College
Drexel University
Duquesne University
Durham University
Earlham College

Eastern University
Fordham University
Franklin & Marshall College
Georgetown University
Goucher College
Hamilton College
Haverford College
James Madison University
Johns Hopkins University
Lafayette College
Long Island University
Michigan Technological University
New York University
Northeastern University

Ohio State University
Pace University
Pennsylvania State University
Purdue University
Regent University
Rhodes College
Rochester Institute of Technology
Sarah Lawrence College
School of the Art Institute of Chicago
Skidmore College
Spelman College
St. Lawrence University
SUNY at Albany
Syracuse University

Swarthmore College
Tufts University
United States Military Academy
University of Chicago
University of Los Angeles
University of Massachusetts
University of North Carolina
University of Pennsylvania
University of Pittsburgh
University of Richmond
University of Southern California
University of Tampa

University of Texas
University of Vermont
University of Virginia
Vassar College
Virginia Commonwealth University
Virginia Military Institute
Wellesley College
Wesleyan University
West Virginia University
Williams College

ANN & STEVEN HUTTON

27 Years of Supporting Westtown

In 1994, Ian Hutton '08 entered Westtown School's Primary Circle, and Ann and Steven Hutton began their journey as devoted members of the Westtown community. They have remained involved at Westtown since Ian's first day. Ann currently serves as a member of the Board of Trustees; she is clerk of the Advancement Committee and a member of the Committee on Trustees. The Huttons regularly attend and support Westtown events and remain close to other parents of alums. Even though they no longer have a student enrolled, they often attend graduation.

The Hutton family is also deeply engaged in the greater Chester County and Philadelphia areas. They are involved with many organizations that span from the arts to environmental preservation to education, and literacy to family and individual health. We are truly fortunate to have Ann's and Steven's extensive experience, enthusiasm, and wisdom.

In addition to their volunteer service to Westtown, Ann and Steven have also contributed philanthropic gifts since Ian first arrived as a student. They understand the importance of philanthropy,



faithfully support the Westtown Fund, and consistently seek out and contribute to the most pressing needs of the school. Over the past twenty-seven years, Ann and Steven have made generous gifts to many areas at Westtown including: athletics; the science center and robotics; financial aid; and environmental sustainability. Ann and Steven were among the first donors to contribute to the renovation of the Center for the Living Arts.

"While academic excellence is central to the Westtown experience," Ann says, "the school's focus on Quaker values and developing the whole person is what sets



it apart from other independent schools, what makes it transformational for its students, and what attracts us most as parents and donors. We really do believe the world needs more Westonians, and that belief compels us to continue to support this wonderful community.”

Gifts of service and financial support from friends like Ann and Steven are critical to achieving our mission to support each new generation of young learners and prepare them for leadership of a more just, equitable, and peaceful future.

While academic excellence is central to the Westtown experience, the school’s focus on Quaker values and developing the whole person is what sets it apart from other independent schools, what makes it transformational for its students, and what attracts us most as parents and donors. We really do believe the world needs more Westonians, and that belief compels us to continue to support this wonderful community.”

LUCIA WHITTEELSEY '69

Planning for the Future

As Director of Financial Aid at Colby College for more than 25 years, Lucia Whittelsey '69 understands the importance of financial aid. Lucia grew up in Bryn Mawr, Pennsylvania, and attended Westtown School with her sisters Alice Whittelsey '66 and Holly Whittelsey Whiteside '70.

Lucia recently made a planned gift to Westtown through a charitable gift annuity, which provides her with a fixed stream of income for the rest of her life and provides a future gift to Westtown. Charitable gift annuities can be funded with cash or securities. Lucia notes, "The rate that I am getting from my charitable gift annuity is much better than the quarter-percent interest my bank account would give me. The charitable gift annuity provides stable funding for my retirement, and it allows me to make — sooner — the gift to Westtown that I had planned to make in my will."

Lucia designated the proceeds of her charitable gift annuity to Westtown's Kaesmeyer Full Access Fund. This fund provides grants to students from Primary Circle through 12th grade for expenses not covered by tuition. The fund enables students with significant financial need to participate fully in all aspects of a Westtown education by

supporting programs and activities such as tutoring, music lessons, school-sponsored travel and field trips, Senior Projects, athletic and school supplies, and much more.

"I'm excited about the fund and that it can be used in lots of creative ways," Lucia says. "It isn't a level playing field; some students need more assistance in order to benefit from all that the school has to offer. I made this gift in memory of my son, Theodore 'T' Smyth, who passed away in October."

This summer, Lucia also donated the Warren Krebs painting *Pirouette* to the school. Warren Krebs was the Director of Fine Arts at Westtown from 1959 to 1977 and was inspired to paint this after seeing a performance by The American Ballet Theater, where his daughter worked. This beautiful artwork now hangs above the fireplace in the Head of School's home, and welcomes visitors with its thought provoking abstraction and cool pastel colors.

Westtown is very thankful for donors like Lucia whose planned giving provides opportunities for future Westonians. Lucia's thoughtful planning creates a win-win for her and the school, and we are extremely grateful.



Pirouette by Warren Krebs

“

I'm excited about the fund and that it can be used in lots of creative ways. It isn't a level playing field; some students need more assistance in order to benefit from all that the school has to offer.”

JAY FARROW '75

Buliding a Stronger Community Every Day

For almost three decades, Jay Farrow '75 has had a tremendous impact on Westtown School in his roles as a school administrator, a wrestling coach, and a Westtown Fund donor. Jay has demonstrated his deep commitment to Westtown by making a gift to the Westtown Fund every year for over twenty-seven years.

Jay arrived on Westtown's campus in 1972 and graduated in 1975. He earned a B.A. from The College of Wooster and an M.S. from Villanova University. Jay returned to Westtown in 1980 to serve as the Assistant Dean of Boys, a math teacher, and the junior varsity wrestling coach. He has served the school in various roles and is currently the Dean of Access and Equity and an Admission Associate. Jay is also entering his 35th year of coaching the varsity wrestling team.

Gifts to the Westtown Fund impact every part of our community, from campus care to technology, to financial aid to the arts, and they support every person – our students, our faculty, and our staff. The Westtown Fund provides essential unrestricted income to our current-year operating budget, making Westtown Fund gifts one of the most immediate and impactful ways anyone can enhance a Westtown student's experience. Jay says, "I give to the Westtown Fund because I understand its significance as a financial resource in support of school programs and operations that benefits students, families, and



employees. Contributions enrich the quality of the Westtown experience and enhance a true sense of belonging for all Westonians on this beautiful campus."

Friends like Jay, who have given two or more consecutive years to the Westtown Fund, are recognized as members of our Granolithic Society. Members of the Granolithic Society — who give at all levels — are the cornerstone of the success of our Westtown Fund, providing the essential and stable support upon which we rely every school year.



Jay adds, “My annual contribution to the Westtown Fund, regardless of amount, encourages other donors to share their valuable financial resources. I also appreciate the significance of employees giving annually to the Westtown Fund as a clear testament about our belief in, and commitment to, Westtown School.”

Thank you to Jay and all of our Westtown Fund donors for making a difference every day in the lives of our students, faculty, and staff.

I give to the Westtown Fund because I understand its significance as a financial resource in support of school programs and operations that benefits students, families, and employees.”

YEAR IN REVIEW

The 2020-2021 school year began with the world in the midst of a devastating pandemic. Westtown community members partnered with each other and the school to provide our students with the best distance learning, in-person learning, and hybrid learning experiences possible. Campus spaces were adapted to allow for physical distancing, and teachers worked tirelessly to offer quality programs and a sense of normalcy. It was a year like no other (and the word “pivot” was used a lot!), but together we honored Westtown’s mission to seek out and honor that of God in each of us and to inspire and prepare our students to be stewards and leaders of a better world.

2020



SEPTEMBER

- Middle School Orientation Week.
- Lower School teachers provide in-person orientation

NOVEMBER

- Annual International Festival
- McLear Artist-in-Residence Shanaé Burch kicked off her residency with a presentation and discussion with Upper School’s Advanced Theater students about art and public health
- Upper School students participated in a virtual Model UN Conference



JUNE

- Construction began on Phase Two of the renovation of the Center for the Living Arts. This phase focused on the Barton-Test Theater, and many needed upgrades were planned

JULY

- Teams of faculty, staff, and administrators worked all summer on how to reopen the school in the fall, and teachers rewrote curricula



AUGUST

- During New Employee Orientation Week, we welcomed 16 full-time and 15 part-time new employees to our community



OCTOBER

- Third graders made postcards and buttons encouraging grownups to vote
- The Art Department received an Outstanding Visual Arts Community Endorsement from the Pennsylvania Art Education Association
- To celebrate Halloween festivities, Teacher Jeff and Teacher Jeanne continued the tradition of hand making creative masks with Lower School students



DECEMBER

- Work Program students and staff provided 4,916 meals to Meals on Wheels in 2020
- Middle School students hosted a holiday cookie party to thank staff for their work
- 5th graders organized a Lower School coat drive to benefit La Comunidad Hispana



WESTTOWN SCHOOL

2021



MARCH

- Upper School students participated in a 14-hour math modeling project called “Defeating the Digital Divide: Internet Costs, Needs, and Optimal Planning”
- Accepted students received welcome boxes from the Admission Office



MAY

- Senior Art Show took place in the Gallery
- Seniors enjoyed annual College Shirt Day, where students sported apparel with the name of their chosen college or university
- Our second all-virtual Alums Weekend included 30 virtual events with over 400 participants
- The Lower School annual Spring Book Fair was held online



JANUARY

- Lower School students took “shelfies” with their favorite books to celebrate National Library Shelfie Day
- Students in the Farm + Forest Program learned about animal survival tactics in winter; maple sugaring; winter gardening in the high house and tunnel; and animal track identification



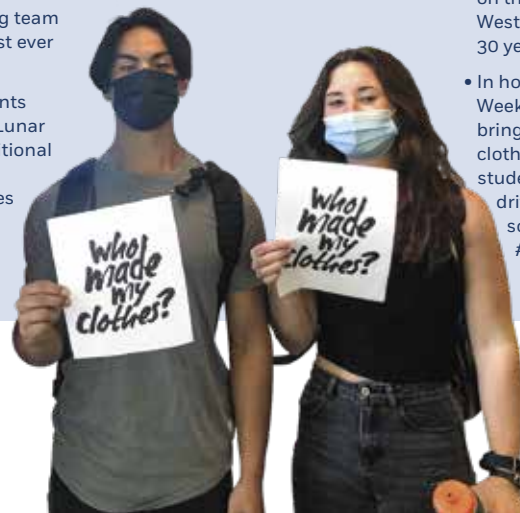
FEBRUARY

- Families for Multicultural Community hosted events for families, including a Black History Month trivia afternoon and a “Divine 9” event to learn more about Black fraternities and sororities
- Lower School students learned about the Civil Rights period and the perseverance of Dr. Martin Luther King
- The varsity swimming team participated in its first ever virtual swim meet
- Middle School students celebrated Chinese Lunar New Year with a traditional Chinese lunch and student performances



APRIL

- During our first annual branded giving day, 1799 Day, we raised \$124,271 from 517 donors—double our goal and double the amount of the prior year’s giving day
- As part of One Story Week, all Lower School students read *Thank you, Omu* and participated in activities celebrating the book’s core themes
- Middle School students went on the annual canoe trip, a Westtown tradition for over 30 years
- In honor of Fashion Revolution Week (a week dedicated to bringing awareness to the clothing industry), Upper School students hosted a clothing drive and participated in a social media movement #WhoMadeMyClothes?



JUNE

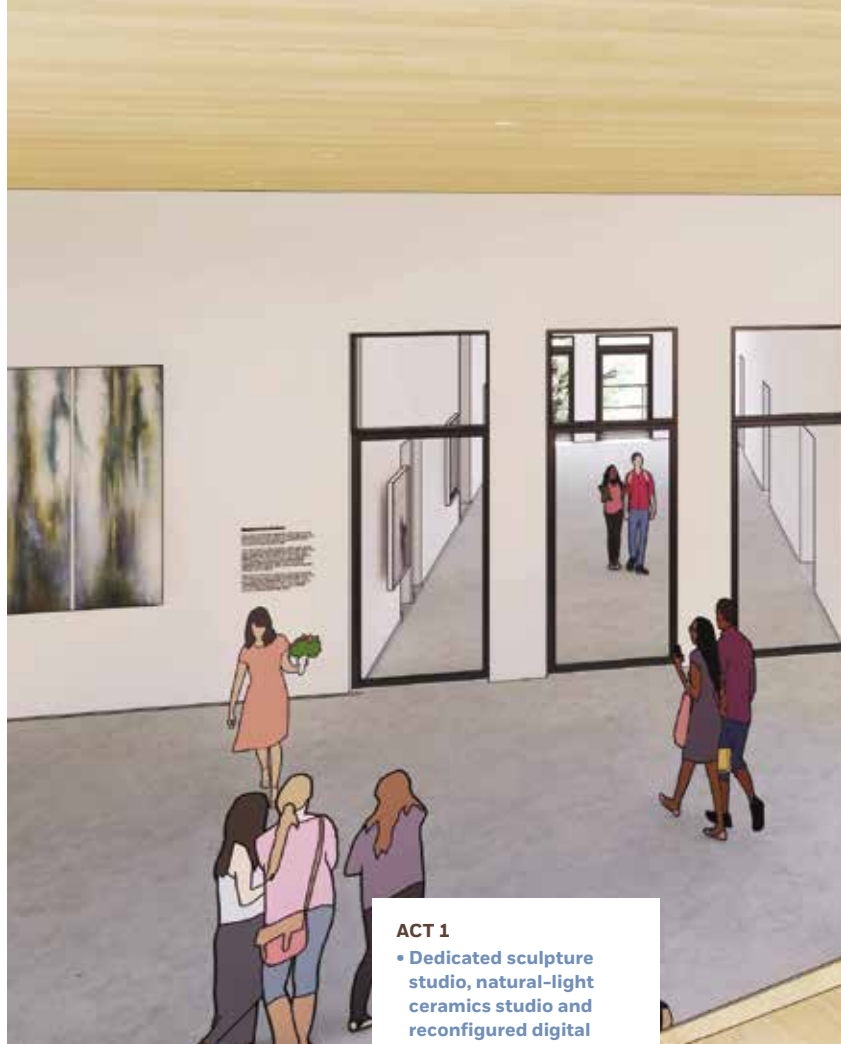
- Third graders performed African dance outside with Jeannine Osayande & Duna Performing Arts Company
- 90 members of the class of 2021 walked through the Greenwood, 8th graders celebrated their graduation from Middle School, and 5th graders moved on to Middle School with a traditional Meeting for Worship



SEEN AROUND CAMPUS

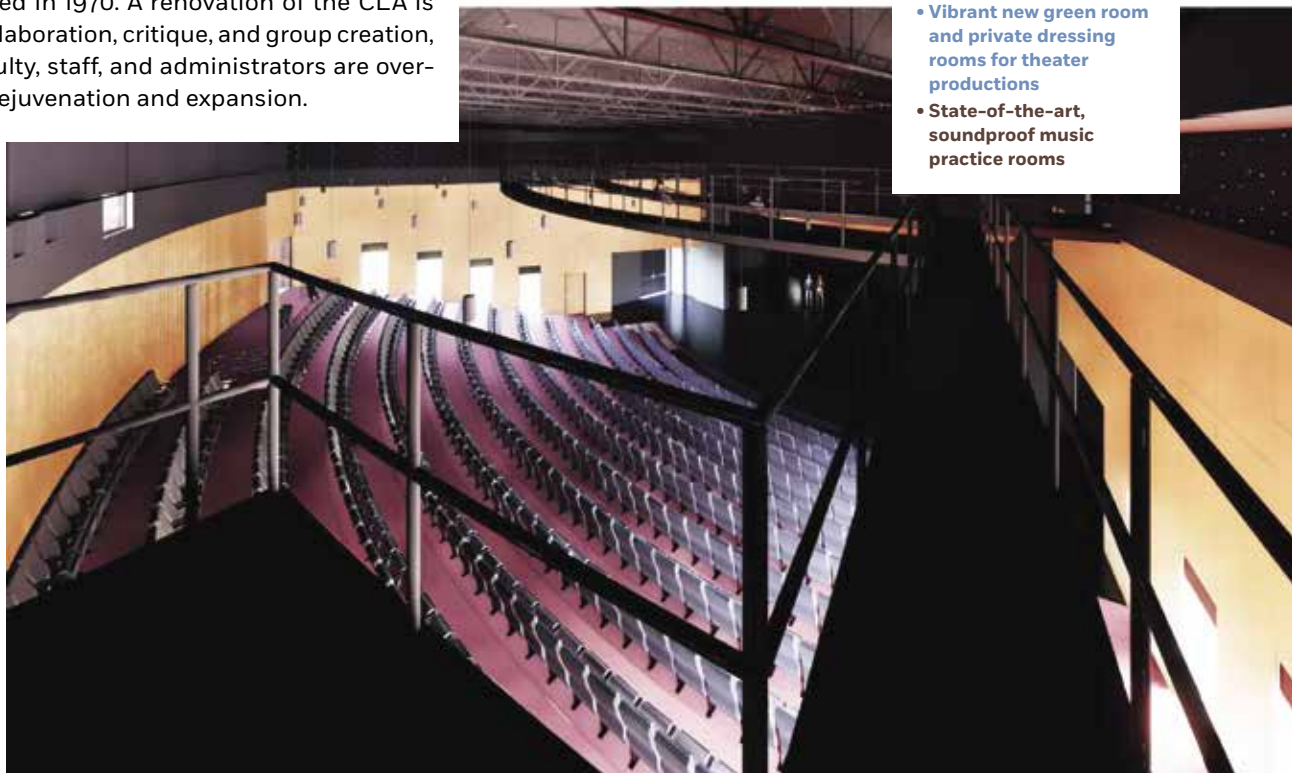
Our community is exploring what it means to be ‘a maker’ in the twenty-first century. Whether devising theater productions inspired by the way social media affects the brain, creating animations and short films using professional grade software, or producing and recording music, Westtown teachers collaborate with students to develop unique curricula and projects that are tailored to the students’ identities and passions.

The Center for the Living Arts (CLA), which includes the Barton-Test Theater as well as the surrounding studios, classrooms, and rehearsal spaces, opened in 1970. A renovation of the CLA is underway to support collaboration, critique, and group creation, and a committee of faculty, staff, and administrators are overseeing its three-phase rejuvenation and expansion.



ACT 1

- Dedicated sculpture studio, natural-light ceramics studio and reconfigured digital arts lab
- Revitalized rehearsal spaces for choral and instrumental music
- Vibrant new green room and private dressing rooms for theater productions
- State-of-the-art, soundproof music practice rooms



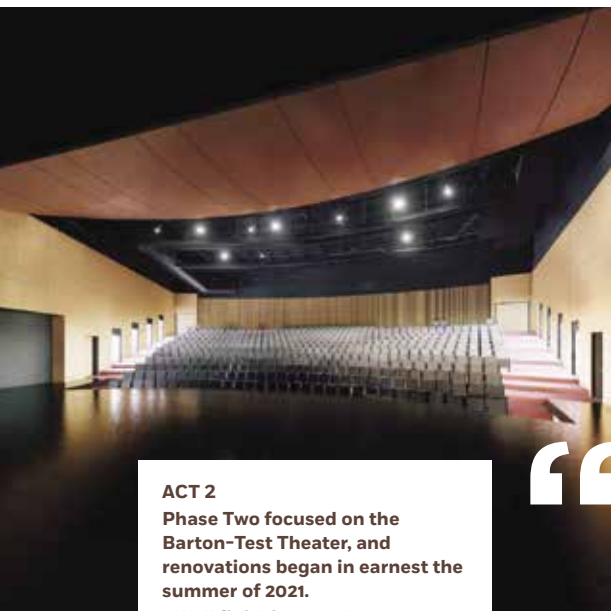
Thanks to early leadership giving, Phase One is finished, and Phase Two was completed at the end of 2021.



ACT 3

Looking ahead, Phase Three will unify the CLA, making it a space for community engagement and excitement through performance and creative expression. The concept for Phase Three envisions the following:

- An exhibition gallery to showcase student work and display outside artists' compositions
- A flexible space for performances and gatherings
- Accessibility modifications, including an elevator and modernized bathrooms



ACT 2

Phase Two focused on the Barton-Test Theater, and renovations began in earnest the summer of 2021.

- Wall finishings to sharpen acoustics and new theatrical sound system and lighting
- HVAC installation
- Safe catwalks that allow student learners to participate in technical work
- Expanded storage space and safety upgrades, including a new sprinkler system
- Aesthetic renovations to the scene shop and costume storage areas



The CLA is a hub of energy at the center of our campus. It is a place where students from all three divisions come together to learn, celebrate, and explore. With the renovation of spaces well loved by generations of Westonians, and the creation of new areas to gather and share, we have the opportunity to shine a new light onto this program and make the arts more accessible to all.”

CHRIS WILLS, Visual and Performing Arts Department Chair, Interim Dean of Faculty and Innovation

QUESTIONS ABOUT WESTTOWN'S ENDOWMENT? (WE'VE GOT ANSWERS)

What is the current value of Westtown's endowment, and what is the school's spending rate? Westtown's endowment was valued at \$129 million as of June 30, 2021, and our spending rate is 4.5%.

Who manages Westtown's endowment? Morgan Stanley and Westtown's internal Investment Committee manage the endowment in accordance with the school's investment policy.

How are Westtown's endowment assets invested, and is consideration given to socially responsible investing? We follow Westtown School's investment policy and remain true to Westtown's values. Our Investment Committee works in partnership with Morgan Stanley to integrate more ESG platforms (sustainable investing that considers environmental, social, and governance factors) into our investment portfolio. Morgan Stanley continually analyzes ESG focused asset managers and portfolio companies. We consider many factors—such as carbon footprint and diversity equity and inclusion work—to evaluate each investment manager and investment opportunity.

How often are the school's endowment assets reviewed, and what does the review process entail? Westtown's investment accounts are reviewed in detail by Morgan Stanley and our Investment Committee on a quarterly basis at a minimum. If the market is particularly volatile, we meet more frequently.

How has Westtown's endowment performed in past years, and what growth is expected in the future? As of September 30, 2021, our three-year performance average was 11.76%, and our five-year average was 11.65%. We cannot predict returns, nor do we try to. Our goal is to ensure that we cover the spend rate and that we are investing responsibly. We maintain a well-balanced portfolio, which is diverse and can withstand seen and unforeseen upswings and downswings in the market. We do not attempt to time the market, nor do we take a speculative view of investing. The close partnership between our Investment Committee and Morgan Stanley plays a significant role in ensuring that we mitigate risk where we can.

—Daryl Shore '99, a member of the Board of Trustees, is the Clerk of the Board's Investment Committee, and he also serves on the Finance, Committee on Trustees, and Head of School Search Committees. Daryl is the Managing Director of Structured Finance at National Equity Fund, Inc., a nonprofit affordable housing investor. He has a B.A. in Political Science with a minor in Economics from Emory University, an M.B.A. in Finance from Clark Atlanta University, and an M.S. in Real Estate from Johns Hopkins University. Daryl is also active as a board member with several civic and nonprofit organizations, including The Gesu School and Community Housing Capital.



ENDOWED FUNDS

Westtown School's endowment consists of more than 100 funds totaling \$129 million as of June 30, 2021. The principal of these funds is invested, and Westtown uses endowment earnings to support the school's budget. Our endowment provides funding for critical needs such as financial aid, professional development, compensation, sustainability, student programs, campus operations, and more.

Investment Committee Members

<< Daryl Shore '99
Clerk

Chris Benbow '90,
P'23/'25
Staff Liaison

Marth Brown Bryans '68,
P'92/'94
Ex Officio

Bruce Craig '82
Adjunct Member

Carolyn Hapeman P'20
Staff Liaison

Elizabeth Gilbert
Osterman '73

Funds Supporting Campus Care

Campus Fund
Endowment for the Upkeep of the Science Center
Esther Duke Archive Fund
Rachel K. Letchworth Fund for Central
The Arboretum Fund
The Cooper Fund

Funds Supporting Compensation

Anonymous Compensation Fund
Edward E. Ford Foundation Fund
Elizabeth Biddle Yarnall Fund
Endeavour Fund
Faculty Compensation Fund
James G. Vail Fund
The Guerster House Faculty Compensation Fund
The J. Oliver and Esther L. Duke Faculty Fund
The Samuel Hulme Brown and Elizabeth Hoopes Brown History Fund

Funds Supporting Financial Aid

Allan W. and Barbara Staats Scholarship Fund
Ann O'Neill Shigeoka '64 Scholarship Fund
Class of 1966 Scholarship Fund
Class of 1984 Haines Sprunt Tate and Kenneth Reeves Scholarship Fund
Financial Aid Endowment Fund
Frank L. Dewees Scholarship Fund
George Hartwell Adams '63 Scholarship Fund
Lenfest Scholar Program
Martha Wilson '46 Scholarship Fund
Olive Charles Scholarship Fund
Peter Donchian Scholarship Fund
Peter O. Lane '57 Alumni Scholarship Fund
Pure Unrestricted Scholarship
Quasi Unrestricted for Scholarship
Rebecca K. Haines College Scholarship Fund
Richard W. Deibert '42 Scholarship Fund
Richard Warren Thompson '67 Scholarship

Robert Parker '57 Scholarship Fund
Sally Pennell Barton Scholarship Fund
Terry Walker '78 and Angela Knoble Scholarship Fund
The Annenberg Foundation Scholarship Fund
The Barbara Wildman Perkins Financial Aid Fund
The Brian Crew Scholarship Fund
The Charles R. and Karin Hoffman Fund
The Charles Wharton Fund
The Class of 1953 Alumni Scholarship Fund
The Class of 1963 Scholarship Fund
The Class of 1967 Memorial Scholarship Fund
The Daniel D. Test, Jr. Foreign Scholar Assistance Fund
The Dorothy "Sunny" Spivey Field '45 Merit Scholarship Fund
The Edith Ogden Harrison Scholarship Fund
The Esther Bracken Binns Scholarship Fund
The Eugene and Mary Owsley Hogenauer Fund
The J. Kirk Russell '34 Fund
The J. Oliver and Esther L. Duke Financial Aid Fund
The John Woolman Scholarship Fund
The Kaesemeyer Full Access Fund
The Lucretia Wood Evans '38 Scholarship Fund
The Martha F. Browning Hunter and Mary Hutton Biddle Scholarship Fund
The Quaker Student Scholarship Fund
The Pina and John Templeton Scholarship and The Richard and Cynthia Simpson Scholarship Fund
The Rene L. Guerster '56 Scholarship Fund
The van Arkel Fund
The William F. Wickersham Memorial Fund
Wilson Family Fund

Funds Supporting Faculty and Staff

Caroline Paxson Rhodes Fund
Class of 1958 Faculty Enrichment Fund
Employee Award Fund

David Mallery "It's a Wonderful Life" Fund for Professional Development
Faculty Development Fund
The Earl G. Harrison, Jr. Fund for Professional Development
Rene L. Guerster Sabbatical Fund
The Alex Von Marko Fund
The Class of 1956 Sabbatical Enrichment Fund
The Marjorie Barnard Faculty Fund
The Winslow Fund
William Grier Fund

Funds Supporting Programs

Alice and James Walker Senior Project Fund
Awards Fund
Candace A.R. Freeman Fund
Coles Upper School Research Fund
Computer Technology Endowment Fund
Fund for Peace and Arbitration
Library Fund
Mary Ellen Perkins Sutton '45 Fund
Rene Guerster '56 House Retreat Fund
Sandra Turner Belfer Fund
Shoemaker Visiting Lecturer Fund
The Benjamin John Davies Memorial Fund
The Class of 1977 Westtown Outing Club Fund
The Evans/Trueblood Learning Resource Center Endowment Fund
The McLear Artist-in-Residence Fund
The Teacher Debbie Daniels Memorial Living History Fund
The Trotter Anderson Music Fund
Thomas M. Woodward Fund

Funds Supporting Quakerism

Fund for Quakerism
The Class of 1950 Faith and Practice Fund in Memory of Charles K. Brown III
The Endowed Chair in Faith and Practice Honoring Quaker Mentors of the Westtown Community
The Faith and Practice Fund in Memory of Mervin T. Hutton

The Faith and Practice Fund in Memory of Thomas S. Brown
The Longstreth-Roche Fund for Quaker Education
Winifred Beer and Martin Beer Quaker Leadership Award and Quaker Visitation Fund

Funds Supporting Sustainability

Next Generation Fund for a Sustainable Future
The Class of 1949 Environmental Stewardship Fund
The John W. Baird Environmental Sustainability Fund

Funds Supporting The Westtown Fund

Gerald and Deana Stempler Fund in Honor of Hayden and Alexandra White
The Bartlett Memorial Fund

Miscellaneous Funds

Board Designated for Operations
Fund for The Elimination of War
General Endowment Fund
Insurance Fund
Loan Program
Endowment Funds
Permanent Fund for General Purposes
Pure Restricted for Friends Schools
Quasi Restricted for Friends Schools

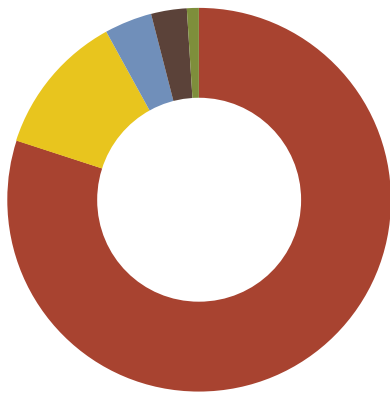
GIVING BY THE NUMBERS



WESTTOWN'S BUDGET

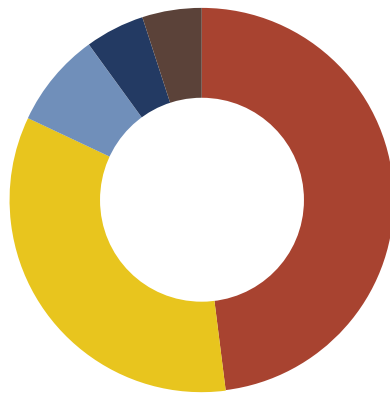
Approximately 80 percent of our operating budget comes from the tuition dollars current parents invest in their children's education. We invest these and other funds in our students, faculty, and staff. The remaining 20 percent of the operating budget is financed through income from our endowment, campus rentals, summer programs, and the generosity of thousands of annual donors.

REVENUE



■ Gross Tuition & Fees	80%
■ Endowment	12%
■ Westtown Fund	4%
■ Other Fundraising	3%
■ Other Income	1%

EXPENSES



■ Salaries/Benefits	48%
■ Financial Aid	34%
■ Academics & Operating	8%
■ Physical Plant	5%
■ COVID	5%

THE 2020-2021 WESTTOWN FUND

One of the most immediate and impactful ways one can enhance a Westtown student's experience is by making a gift to the Westtown Fund. Each year, we invite the entire Westtown community—our faculty and staff, Board of Trustees, current parents, alums, parents of alums, grandparents, and our friends—to invest in the transformative experiences that a Westtown education offers. Last year, 1,687 generous donors made gifts to the Westtown Fund totaling \$1,344,855.

2020-2021 FISCAL YEAR / WESTTOWN SCHOOL

Gifts by Designation

PANDEMIC RELIEF

\$7,736

BUILDING AN ANTI-BIAS, ANTI-RACIST COMMUNITY

\$20,819

FINANCIAL AID

\$81,261

AREA OF GREATEST NEED

\$1,235,039

WESTTOWN FUND NUMBERS

Gifts at a Glance

OF TOTAL RAISED

11.3%

WERE GIFTS UP TO \$499
\$152,210

26.7%

WERE GIFTS FROM \$500-\$2,499
\$359,564

25.0%

WERE GIFTS FROM \$2,500-\$9,999
\$336,434

36.9%

WERE GIFTS OF \$10,000+
\$496,647



Gift and Donor Distribution

<\$25
175
\$2,857 [TOTAL]

\$25-\$49
131
\$3,849

\$50-\$99
207
\$11,843

\$100-\$249
580
\$81,545

\$250-\$499
176
\$52,116

\$500-\$749
107
\$57,820

\$750-\$999
9
\$6,970

\$1,000-\$2,499
193
\$294,774

\$2,500-\$4,999
48
\$150,081

\$5,000-\$9,999
30
\$186,353

\$10,000+
31
\$496,647

Average* Gift Size Distribution

<\$25
\$16

\$25-\$49
\$29

\$50-\$99
\$57

\$100-\$249
\$141

\$250-\$499
\$296

\$500-\$749
\$540

\$750-\$999
\$774

\$1,000-\$2,499
\$1,527

\$2,500-\$4,999
\$3,127

\$5,000-\$9,999
\$6,212

\$10,000+
\$16,021



**Standard practice is to report "average" gift size vs. "median" gift size for purposes of the Annual Report*

WESTTOWN FUND PARTICIPATION *

	Alumni/ae/x	Current Parents	Parents of Alumni	Grandparents	Trustees	Faculty/Staff	TOTAL
2021	16%	33%	22%	9%	100%	54%	16%
2020	16%	36%	22%	9%	96%	90%	17%
2019	19%	43%	26%	10%	100%	96%	21%
2018	20%	41%	28%	11%	100%	100%	21%
2017	23%	50%	31%	12%	100%	100%	27%

**This chart represents gifts to The Westtown Fund and does not reflect gifts made to other designations in FY '21*

Who gave to the 2020-2021 Westtown Fund?

Total Contributions By Constituency

ALUMNI/AE/X
\$838,995

PARENTS OF ALUMNI/AE/X
\$446,107

CURRENT PARENTS
\$211,542

GRANDPARENTS
\$109,481

FACULTY AND STAFF
\$42,140

TRUSTEES
\$179,225

1,123
ALUMNI/AE/X

140
FACULTY/STAFF

194
CURRENT PARENTS

22
BOARD OF TRUSTEES

393
PARENTS OF ALUMNI/AE/X

85
GRANDPARENTS

WESTTOWN FUND TOTAL GIFTS

\$1,344,855

RAISED FROM **1,687** DONORS WITH **16%** PARTICIPATION

THANKS TO YOU

The Westtown Fund supports the operating budget of the current fiscal year; money raised during the year is spent in that same year. The following donors made a gift to the Westtown Fund between July 1, 2020 and June 30, 2021.

THE WESTTOWN FUND ALUMNI/ AE/X

1938
PARTICIPATION RATE: 33%
Lucretia Wood Evans '38 ♦

1941
80th Reunion
PARTICIPATION RATE: 14%
William Matchett '41 * and
Judith Matchett ♦
Samuel Nicholson '41
Elizabeth R. S. Richards '41 ●

1942
PARTICIPATION RATE: 13%
Mary Wood Kurtz '42 ●
Alice Bacon Long '42 ♦
Robert Marshall '42 * and
Joy Marshall

1943
PARTICIPATION RATE: 50%
Edward Brinton '43 ■

David Brown '43 and
Mae Raiford Brown ■
Rose Takano Hijikata '43 ♦
Barbara Jones Parker '43 ■
Barbara James
Stonestrom '43 ♦

1944
PARTICIPATION RATE: 6%
Jean Michener
Nicholson '44 ●
S. Edward Rhoads '44 *
and Elsa Rhoads *

1945
PARTICIPATION RATE: 25%
Anonymous
Elizabeth Locke Besse '45 ♦
Gregory Votaw '45 *
Virginia Freeman
Wearn '45 ♦

1946
75th Reunion
PARTICIPATION RATE: 19%
Robert S. Bates '46 ●
A. Dalton James '46 and
Kathryn Williams James ♦
Margaret Taylor
Jenkins '46 ■
Laurie Wolfe Murray '46 *
Sally Nenner Neville '46 ♦
Christopher Nicholson '46

1947
PARTICIPATION RATE: 35%
Nichola Bailey '47 ●
James Forsythe '47 and
Susan Forsythe ●
Bart Harrison '47 ♦
Thera Foster
Hindmarsh '47 ■
Philip Jenkins '47
William G. Rhoads '47 and
Ines M. Rhoads ■

Cecilia Bradbeer Sibinga '47
Mary Jane Harnwell
Wallace '47
Janet Knoblauch
Zimmerman '47 ■

1948
PARTICIPATION RATE: 23%
Deborah Smedley Ablin '48 ●
Deborah and Arthur Ablin
Family Fund
Alan Cayo '48 and
Gisele Jean Cayo ■
Virginia Whipple Cronister
Vaughan '48 ■
Judith Mower
Goodman '48 ●
William Halewood '48 and
Deane Halewood
Robert Merwin '48 and
Virginia Merwin
Sara Sue Fawcett
Pennell '48 ●

1949
PARTICIPATION RATE: 16%
Anonymous
Caroline Hogg
Davidson '49 ♦
Patricia Bailey Deuber '49
and Robert Deuber
Margery Hoag
Freeman '49 ■
Robert Nevitt '49 and
Audrey Nevitt ■
Cynthia Webster
Peterson '49 and
Leif Peterson ♦
Katherine Hill Udall '49

1950
PARTICIPATION RATE: 36%
Sten af Klinteberg '50 ■
Margot Schutt Backas '50 ●
Helen Hetzel Bair '50 ■

Wilhelmina Van Liere
Batchelder-Brown '50
Ronald Birkenfeld '50 *
and Pamela Birkenfeld
Virginia A. Dulany M.D. '50 ♦
David Hodgkin '50 ♦
Marilyn Dew Maisano-
Savage '50 and
James Savage III
Richard Short '50 and
Helen Short
Anne Belknap
Wachsman '50
Mary Heidtke Wilson '50 ♦

1951
70th Reunion
PARTICIPATION RATE: 47%
John Beideman '51 and
Cindy Beideman ♦
Asia Alderson Bennett '51
and Lee Bennett Jr. ■
Pamela Bedell Collins '51 *
Ann Tomlinson
Edmondson '51 ■
Schuyler Elsbree '51 and
Nancy Elsbree ♦
George Forsythe '51 and
Carole Forsythe
Cyril Harvey '51 and
Judith Weller Harvey '51 ●
Barbara Hoff Hoerle '51
and James Hoerle ●
Joyce Webster Johnson '51 ■
Irene Evens Jones '51
Elizabeth Hunter Loucks '51
and William Loucks ●
Veronica Stinnes
Petersen '51 and
Robert Petersen
Petersen Family Fund at
the Boston Foundation
Bruce Reeves '51 and
Carlene Reeves ■
Parvin Russell '51 and
Sally Russell

1952
PARTICIPATION RATE: 39%
David Barclay '52 and
Nancy Barton Barclay '52
Peg Bruton Batista '52 ♦
Anne Moore Batley '52 ♦
Nancy Wallace Bridges '52 ♦
Philip How '52 ♦
Eleanor Houghton Hurd '52
and Alfred Hurd ■
Rosalind Kennedy
Kenworthy '52 ●

Charles Lane '52 and
Marga Lane
Louise Baker Malcolm '52
Wiltrud Richter
Mott-Smith '52 ●
Anne Steere Nash '52 ■
Mary Zimmerman Ott '52 ♦
Hannah Calkin Parris '52
Dr. Harold Weaver '52
Hildegard Willmann
Wilson '52 ♦
Whitelaw Wilson '52 and
Margaret Whiting Wilson ●

1953
PARTICIPATION RATE: 34%
Richard Allphin '53 and
Joyce Allphin ♦
Anonymous
Ronald Bodkin '53 and
Brenda Freeman
Hayward ♦
Helen Richardson
Borkent '53 and
Pieter Borkent ●
Corinne Krekler
Chapman '53
Donald Emmons '53 and
Susan Emmons ♦
Teresa Jacob Engeman '53
Frances Woods
Fairchild '53 ♦
Dorothy Gilbert '53 ■
Janet Hetzel Henderson '53
and Rolland Henderson ♦
Douglas Kinsey '53 and
Marjorie Kinsey ♦
E. Jerome Michener '53 and
Patricia Lee Michener '59 ■
Stephen Payson '53 and
Helen Stimm Payson ■
Neil Plass '53 ■
James Pugsley '53 and
Emily Pugsley ♦
Norma French Shapiro '53
and Joel Shapiro ♦
Elizabeth Forsythe
Ziegenfus '53 and
William Ziegenfus ●

1954
PARTICIPATION RATE: 30%
Anonymous (2)
Sandra Turner Belfer '54
and Myron Belfer ■
Ruth Wolfe Bounds '54
Janet Silver Crocker '54
Peter Goodwin '54 and
Janice Goodwin ■



WESTTOWN FUND / ALUMNI/AE/X

Charles Hazard '54 and Natalie Hazard * ●
Douglas Kerr '54 and Mary Ann Kerr
Irene Ullmann Luhdorff '54 ■
Helen Boulware Moore '54
V. Bruce Rigdon '54 and Mary Rigdon ●
Maya Alderson Schulze '54 and Frederick Schulze ●
John Stefferud '54 and Erika Winter-Stefferud ●
Robert Stucklen '54 and Deborah Swadesh Stucklen ■
Virginia Waring Thiesenhusen '54 ■
Anne Harrison Van Arkel '54 ◆

1955

PARTICIPATION RATE: 30%
Anonymous
Nancy Swan Bernhardt '55 and Robert Bernhardt ■
David Daniels '55 and Carol Daniels ◆
James Forsythe '55 and Joan Forsythe ■
Arthur S. Garrett '55 ◆
Sarah Cadbury Giddings '55 and Donald Giddings *
Elsie Longenecker Kellerman '55 and Richard Kellerman ◆
Judith Grove Koch '55 ■
Clara St. John Longstreth '55 and Bevis Longstreth ◆
Jessica Rains '55 and Jack Greene ●
Pat Bringham Reed '55 ■
Donald Swartz '55 and Jacqueline Swartz ■
Eugenia Parker Swartz '55 ◆
Betsy Baker Wenny '55 and Douglas Wenny ◆
Alice Willcox Whitney '55 and R. Lee Whitney ■

1956

65th Reunion
PARTICIPATION RATE: 35%
Anne Thacher Adami Bruenn '56 ■
Deborah Haines Borton '56
Charles Chase '56 and Elizabeth Eckstein Chase ◆
Mary Collins Eby '56 and James Eby ●
R. Melvin Keiser '56 and Elizabeth Keiser ●
Douglas Lewis '56 and Elisabeth Lewis ◆
James Maconachy '56 and Margery De Armond Maconachy ■

James Matlack '56 and Jean Yaukey Matlack '56 ■
Thomas Niles '56 ◆
Kenneth Pennell '56 and Mary Jane Schooley Pennell ■
James Perkins '56 ■
Mary Baker Rentschler '56 ◆
Susan Windle Rogers '56 ◆
Sigrid Keyserling Ruggels '56
Allan Staats '56 * and Barbara Staats
Samuel Trueblood '56 and Mary Ellen Trueblood ◆
John Vincent '56 and Delia Pitts
Josephine Withers '56 ●

1957

PARTICIPATION RATE: 39%
Anonymous
Hugh Bonner '57 and Bertha McKinney Bonner '60 ●
M. Christine Boyer '57 ●
Deborah Bacon Cassidy '57 and J. Robert Cassidy ■
Arthur Criddle '57 * and Linda Smith-Criddle
Paul Dean '57 and Nancy Dean ■
Joan Silver Ewing '57 ■
Nancy Klauder Hall '57 ■
Peter Hendricks '57 and Lynn Jordan Hendricks ■
Kaler Wills Howard '57 and Roscoe Howard III ●
Peter Lane '57 and Juliet Backlund Lane ■
Elizabeth McKinney Lieux '57 ●
W. Michael McCulley '57 and Anne McCulley ◆
Hugh McLean '57 and Kate Niles McLean '57 ◆
Elizabeth Levering Morgan '57 and David Morgan ◆
Richard Regen '57 and Susan Regen ●
George Rhoads '57 and Frances Rhoads ■
Betty Nesbitt Robinson '57 ■
Sylvia Kendall Salanitro '57 and Joseph Salanitro ●
Ellen Perera Scott '57 and Roger Scott
Donald Stone '57 and Janee Everitt Stone ■
A. Paxson Yoder Vogt '57 and Kenneth Vogt
Samuel Wagner '57 and Mary Ann Baker Wagner '58 ◆
Jon Wilda '57 and Daniele Wilda ■

1958

PARTICIPATION RATE: 34%
Anonymous (5)
W. Wilson Baker '58 ◆
Harry Cann '58 and Donna Cann ■
George Carroll '58 and Fanny Carroll ■
Henry Chen '58 and Linda Chen ■
Robert Jones '58 ◆
Emily Valentine Krispin '58
Alison Borton Libshitz '58 and Dr. Herman Libshitz ◆
Katherine Horst Modigliani '58 ●
Elizabeth Lane Morrison '58 and Vaughn Morrison ◆
Nancy Rodman Reiser '58 ◆
Jeanette Heyn Springer '58 and Charles Springer ■
Susan Squires '58 ■
Cornelia Scheffey St. John '58 and Steven Edmunds
Barbara Hannum Swartz '58 ●
Samuel Wagner '57 and Mary Ann Baker Wagner '58 ◆

1959

PARTICIPATION RATE: 30%
Anonymous
Aimee Wilson Bellows '59
Barbara Regen Claffie '59 and Gerald Claffie ■
Richenda Curtis Davison '59 ◆
Thomas Elkinton '59 and Eleanor Elkinton ◆
Jan Mesics French '59 ◆
Elizabeth Gaskill '59
Alice L. Glen '59 ■
Sarah Wiley Guise '59 and Owen Guise ◆
Nancy Hadley-Jaffe '59 ■
Daniel Hogenauer '59 ■
Robert Houghton '59 and Beverly Houghton ◆
Terry Irwin '59 and Cynn timer Axten Irwin '61 ●
Marjorie Hibbard Lauer '59 ●
Sarah Test Lawton '59
David Llewellyn '59 and Barbara Llewellyn ■
Gail Young McCahon '59 and Joseph McCahon ●
E. Jerome Michener '53 and Patricia Lee Michener '59 ■
Penelope Norrington Orth '59 and Joseph Orth ◆
Virginia Fairchild Pabst '59 and Alan Pabst * ■
Samuel Shanaman '59 and Nancy Shanaman

Nancy Summers '59 and Martin Yespy ■
Bob Swartz '59
Carol Perera Weingeist '59 ■

1960

PARTICIPATION RATE: 31%
Anonymous
Shelia Ashley '60 ■
Albert Bacon '60 and Dorothy Jacob Bacon '60 ◆
Bill Beardsley '60 and Betsy Beardsley ●
Ben Blair '60 and Carol Blair ■
Hugh Bonner '57 and Bertha McKinney Bonner '60 ●
Molly Niles Cornell '60 ◆
Penny Teaf Goulding '60 ◆
Patricia Livingston Herban '60 ■
John Hoskins '60 and Marilee Hoskins
Caroline Dupree Lanker '60 ●
Arthur M. Larrabee '60 and Nancy van Arkel ◆
Deborah Gillette Law '60 and Robert Law ■
M. Gwyneth Elkinton Loud '60 ◆
Donald McCouch '60 and Rina McCouch ◆
Stephen Painter '60 and Kelly Painter ■
Antonia Roberts Sharp '60 and Francis Sharp ■
V. Holland Taylor '60
Parnel Wickham '60 ■
Frances Swan Williams '60 and Randall Williams ■

1961

60th Reunion
PARTICIPATION RATE: 49%
Anonymous (2)
David Borton '61 and Harriet Brown ■
Carol Palmer Bradley '61 ■
Virginia Rust Brendlen '61 and George Brendlen ◆
Benita Warder Cooper '61 ◆
Dane Criddle '61 and Susan Criddle
George Eager '61
Helen Strong Foreman '61 ■
Douglas Fuson '61 and Bernadette Fuson ●
Carol Woods Gehlbach '61 and Stephen Gehlbach ■
William Goulding '61 and Roberta Galati ◆
Marianne Griffith '61
John Hirshfeld '61 and Barbara Hirshfeld ●
Charles Holzer '61 and Jean Holzer ●

Terry Irwin '59 and Cynn timer Axten Irwin '61 ●
Janis Rust Jones '61 and Robert Trakas ◆
Tom Kaesemeyer '61 and Sally Faulkner Kaesemeyer '62 ◆
Elizabeth Walter Kirk '61 and Thomas Kirk Jr. ◆
Christina Cady Knight '61 and Robert Knight ■
Michael Lebo '61 and Barbara Lebo ■
James H. Littrell '61 and Louis M. Skypala
Nivin Snyder MacMillan '61 ●
Margaret Hogenauer McCormick '61 and Lawrence McCormick ■
Ouida Courteal Parker '61 and Al Parker ■
Charles Peterson '61 and Karen Peterson ■
Carol Perry Press '61 and Bill Press ■
Allison Mook Sleeman '61 and John Sleeman ■
Ann Mullin Stromquist '61 and Shelton Stromquist ■
Rebecca C. Test '61 and Stephen F. Barsky ■
Sarah St. John Volkert '61 ●
David Warren '61 and Katherine Warren ■
Robert Woodward '61 and Mary Woodward ●
Laura Russell Worth '61 and William Worth III
Lester Young '61 and Maria Young ■

1962

PARTICIPATION RATE: 29%
Anonymous
David Clement '62 and Sara Clement ■
William Dietz '62 and Nancy Dietz
Jacob Dresden '62 and Patricia Dresden ■
Phyllis Thompson Gardener '62
Jay Ham '62 ■
Davis Henderson '62 ■
Abigail Scott Higgins '62 ●
Elisabeth Clark Hoffman '62 ■
Nancy Maida Hoffman '62 ■
Tom Kaesemeyer '61 and Sally Faulkner Kaesemeyer '62 ◆
Mary Lennox '62
Anthony Michel '62 and Theresa Michel ●
David Morris '62 and Susan Yarrow Morris ■

Caroline Balderston Parry '62 ●
 David Parsons '62 and Bonnie Parsons ●
 Donald G. Pennell '62 ♦
 Eleanore (Morry) Mather Potter '62 ■
 Paula Kaesemeyer Presler '62 and Franklin Presler
 Samuel Sholl '62 ■
 Arthur Smith '62 and Sally Smith
 Cheslye Larson Ventimiglia '62 and John Ventimiglia
 Charles White '62 and Sara White ♦

1963

PARTICIPATION RATE: 45%
 Heather Woods Ames '63 and Richard Ames ♦
 David Andrews '63 and Arlene Andrews ●
 Anonymous (2)
 Paul Bailey '63 and Joanne Obrow Bailey '64 ■
 Donna Hurst Barnes '63 and Andrew Barnes ●
 Sarah Isherwood Bessey '63 and Palmer Bessey ♦
 Dorothy Dietz Blitz '63 and Allen Blitz ■
 Elizabeth Page Carroll '63 and Robert Carroll ■
 Dayton Coles '63 and Sheri Coles ■
 Terrie Thompson Cornell '63 and Bill Cornell ■
 Rachel Lindley D'Alonzo '63 and Thomas D'Alonzo ●
 Kathrin Bernard Donatucci '63 and Peter Donatucci ●
 Ruth Goulding Elder '63 and Jim Elder
 John Emmons '63 ●
 Laurence Flaccus '63 and Susan Flaccus ■
 Winifred Rhoads Givot '63 and Irv Givot ♦
 Ann Lindley Grosz '63
 Bonnie Ladd Hamilton '63 and Frederick Hamilton ■
 Diana Burlingame Hayes '63 and Gary Hayes
 Wilbur Hobbs '63 and Carolyn Ross Hobbs ■
 Timothy James '63 and Terri James ●
 Robert Kinney '63 ■
 W. Theodore Kresge '63 and Margaret Kresge ■
 Edward Krutsky '63 and Christina Krutsky ■

Ennes Littrell '63 and Javier Arrastia
 Beth Mullin '63 and Brad Whitfield
 Elizabeth Swan Peacock '63 and Jean Peacock ♦
 Jeffrey Poole '63 ●
 Thomas Rie '63 ■
 John Sharpless '63 and Janet Rutkowski ■
 Daniel Smith '63 and Pamela Smith ●
 David Stilwell '63 and Caroline Stilwell
 John G. Tatum '63 ■
 Sylvia White '63 and Michael Mirande ■
 Dorothy Woodward Wortmann '63 and Robert L. Wortmann ■
 Peter Young '63 and Judy Young ■

1964

PARTICIPATION RATE: 27%
 Anonymous
 Paul Bailey '63 and Joanne Obrow Bailey '64 ■
 Nancy Bennett '64 ■
 C. Baird Brown '64 and Carol Hadley Brown '66
 Nan Butterfield '64 ●
 David Carter '64 and Constance Carter ■
 Linda Ames Cassady '64 and Kim Cassady ■
 Jennifer Cutter Chamberlain '64 ■
 Lynne Ritzenthaler Dannenhold '64 ●
 Robert Dougherty '64 and Mary-Frances Dougherty ■
 Theodore Griffith '64 ■
 Bryn Hammarstrom '64 and Lynne Graham ♦
 Dagny Karkalits Henry '64 and William Henry ■
 T. Hale Irwin '64 and Susan Robinson Irwin ■
 W. Joseph Mills '64 and Linda Mills ♦
 Sergio Modigliani '64 and Suzanne Kohn Modigliani ♦
 William Palmer '64 and JoAnn Hotta
 Karen Schultz Sadlon '64 and Jay Sadlon ■
 Christopher Valentine '64 and Theolia Valentine
 Suzanne Wilson '64 ●
 Edward Winslow '64 and Sally Winslow ■
 Jane Williams Wiregard '64 ●

1965

PARTICIPATION RATE: 28%
 Deborah Seeley Averill '65 and Edward Averill ■
 David Bailey '65 ●
 John A. Clement '65
 Kathleen E. Clement '65 ♦
 David Cope '65 and Marja Cope
 Stephen Darnell '65
 Janet Parker DeLaney '65 and Robert DeLaney ■
 Riley Doty '65 ●
 Alison Stokes Gottlieb '65 ■
 Olivia Heathcote '65
 Christine Normart Hoenstine '65 and John Hoenstine ■
 J. Dudley Kimball '65 and Virginia Kimball ■
 David Lawaetz '65
 Ingrid Scholz Longo '65 and Edward O'Neil ■
 Jim and Liz Maier '65
 Margaret Byerly Marshall '65
 Deborah Brown Miles '65 and Graham Miles '65
 Margery Claghorn Robertson '65 ■
 Maria Gayle Schweizer '65 and Charles Schweizer ■
 William Telfair '65 and Carole Hill Telfair ■
 Patricia Stilwell Walker '65 and W. Danforth Walker
 Peter Woodrow '65 and Linda Hornig ■

1966

55th Reunion
PARTICIPATION RATE: 26%
 Tony Beardsley '66 and Elizabeth Beardsley
 C. Baird Brown '64 and Carol Hadley Brown '66
 Charlie Browne '66 and Winnie Woodward Browne '66 ●
 Meredith Channel '66 and Terry Rathbun ●
 Edward Cope '66 and Caroline Curtis Cope '68 ●
 Ann Lindley Earle '66 and George Earle V ●
 Margot Eastman '66 ●
 Joseph Elkinton '66 and Kathleen Conlan
 Deborah Wallace Essig '66 and Robert Essig
 William Gaymon '66
 Gail Haines '66 and Guy Wood ●
 Martha Mullin '66 and Thomas Cooney ■
 Henry Mustin '66 and Laura Lippman

H. Clifton Patterson '66 and Laura Patterson ●
 Sharon Taft Quarles '66 and James Quarles III ●
 Anne Brown Randall '66 and Sherman Randall ■
 Paige Russell '66 ●
 Margaret Walther Saenger '66 and Peter Saenger ■
 Laurel Brill Swan '66 ■
 Victoria von Keyserling '66 ●
 James Winslow '66 and Katherine Rinearson Winslow ♦

1967

PARTICIPATION RATE: 25%
 Anonymous
 Robert Briggs '67 and Virginia Lohr ●
 Marianne Cope '67 and William Buskirk ■
 Gordon M. Core '67 and Lois E. Core ■
 Linda Fairchild Cushman '67
 Lynne Miller Feldman '67 and Arnold Feldman
 Margy Frysinger '67 and Stephen Tuttle '71 ♦
 Barbara Gibson '67 ●
 Jean Orne Gosling '67 ●
 Henry P. Hackett '67 ■
 Dorinda Thorp Hoag '67
 Margaret Mook Jones '67 and Kim Jones ●
 Susan Webster Kieronski '67 and Robert Kieronski
 Terry Ladd '67 and Mary Ladd ●
 Margot Murphy '67
 Margaret Murray '67 and Robert Dohn ■
 Nino Cooley Ridgway '67 ●
 Carol Savery-Frederick '67 and William Frederick ■
 Ed Serrill '67 and Barbara Serrill ♦
 Frank Sterrett '67 ■

1968

PARTICIPATION RATE: 36%
 Carolyn Alsup '68 ■
 Thomas Bailey '68 and Carmenza Gallo ■
 Anna Evans Beesley '68 ■
 Martha Brown Bryans '68 ♦ and Henry S. Bryans
 Richard Burns '68 and Babette Burns ♦
 Jessie Cocks '68 ■
 Edward Cope '66 and Caroline Curtis Cope '68 ●
 Mary Ellen Delaplaine '68
 Charles Evans '68 and Candace Evans ♦
 Linda Haines '68

David Hsia '68 and Susie Lew ■
 Catherine Nolte Huston '68 and Joseph Huston, Jr.
 Richard Karkalits '68 and Mindy Novis ■
 Richard Klotz '68 and Laurie Klotz ●
 Alexander Krutsky '68 * and Maggie McNally
 A. A. La Fountain III '68 and Tica Simpson ♦
 John Manning '68 and Victoria Manning ●
 Edward Marshall '68 and Joanna Bassert ■
 Diane Burn Monsivais '68 and Jose Monsivais
 Ginny Foust Mutti '68 and Larry Mutti ♦
 Sarah Cope Putnam '68 and Craig Putnam ●
 Martin Stabler '68 ●
 Joanna Brinton Temple '68 and Christopher Temple
 Susan Schneider Temple '68 and Peter Temple ■
 Brian Terrell '68 and Carol Terrell ■
 Nancy Kriebel Turner '68 and Charles Turner ♦
 Barbara Webster '68 and Skip Tannen
 Doug Welsh '68 and Vivian Welsh ■
 Anne Carr Wiedenkiller '68 and Keith Wiedenkiller ♦

1969

PARTICIPATION RATE: 18%
 Alice Andrews '69 and L. Laird Holby ●
 Anonymous
 Elizabeth Clement Bauer '69 and Martin Bauer '69 ♦
 Rebecca Mills Bremermann '69 and Ralf Bremermann ■
 Patricia Bernard DiGiacomo '69 and Robert DiGiacomo ♦
 Edward Ewing '69 and Susan Ewing ●
 Thomas Hay '69 and Ellen Hay ■
 Maryann Patterson Ingersoll '69 and D. Scott Ingersoll
 S. Catherine Manning Kane '69 and David Kane ●
 Alden A. Mudge III '69
 George W. Narwold '69
 Elizabeth Hendricks Ogletree '69 and Martin Ogletree '69 ●
 P. Neal Pedersen '69 and Dottie Rae Pedersen

WESTTOWN FUND / ALUMNI/AE/X

Barry Prince '69 and
Ann Prince ■
James White '69 and
Kimberly White
Lucia Whittelsey '69 ●

1970

PARTICIPATION RATE: 18%

Robert Abernathy '70 and
Emily Abernathy ■
Mary Oliver Brown '70 ●
Warren Buhle '70
Nancy Scattergood
Donavan '70 and
Peter Donovan ■
Richard Gosling '70 and
Kristina Gosling ●
Steve Hulburt '70 and
Akke Hulburt
Charles Jones '70 and
Jill Cowperthwaite ◆
Robert Lippincott '70 and
Jenifer Lippincott
Robert Normart '70 ●
Glenn Ravdin '70 * and
Kimberly Ravdin
Sylvia Savery '70 ◆
Robert M. Spivey '70 ●
David Stabler '70 and
Judi Stabler ■
Tom Stalnakar '70 ◆
Peter Viavant '70 and
Robynne Snow
C. Ann Gosling Winder '70
and Miles Winder III ●
Donald Young '70 and
Debra Young ■
Karen Young '70 ■

1971

50th Reunion

PARTICIPATION RATE: 29%

Judith Nicholson Asselin '71
and Denis Nicholson
Asselin ■
Brooks Bennett '71 ■
Robert H. Brigham '71 ◆
Sylvia Bronner '71 ◆
Michelle Beer Caughey '71
and George Caughey '71 ■
Edna Neal Collins '71 and
James Collins ◆
Teri Reath D'Ignazio '71
and Owsley D'Ignazio ◆
Peter Doo '71 and
Lorraine Tunis Doo
Howard Frysinger '71 and
Alison Frysinger ◆
John Gerbron '71 ■
Carlton Henry '71 and
Christine Henry ◆
Mark Jaeger '71 and
Janet Elaine Guthrie ■
Elizabeth Avery LaManna '71
Robert McKinstry '71 ◆
Deborah Taft Megless '71
and Michael Megless

Russell Miller '71 and
Laurie Peterson
Stephen Prentice '71 and
Suzanne Prentice
Andrew Robinson '71 and
Julie Zhang ◆
Sally Stabler '71 and
Carl White
David Stonestrom '71
and Felice Harris ■
Dana Strode-Tritle '71
and Bill Tritle ■
Alex Taylor '71 and
Vickie Taylor ■
Margy Frysinger '67
and Stephen Tuttle '71 ◆
Ann Wetherill Upton '71
and Robert Upton ●
Ann Walter '71 and
Larry Trani
Jeremy Young '71 and
Brandy Young

1972

PARTICIPATION RATE: 24%

Emily Barton Boronkay '72
Susan Braatz '72 ●
Jonathan Burton '72 and
Ann Marie Martorelli
Burton ■
Edward Crook '72 and
Karen Finsaas von
Weyhausen Crook
Christopher Doehler '72
and Christy Flor
Alison Knowles Eckels '72
and Thomas Eckels ●
David Evans '72 ■
Michael Fuson '72 and
Vanessa Fuson ◆
David G. Jones '72 and
Sallie B. Jones ◆
Lucy Call King '72 and
Roger King ■
James Leavitt '72 and
Ellen Leavitt ■
Paul Lewis '72 and
Karen Watkins ■
Alexander Naughton '72 and
Kathleen Naughton ●
Marie Cope Nicholson '72
and Richard Nicholson ●
Gail Ridgway O'Brien '72
and Robert O'Brien ■
E. Jackson Roeske '72
and Tomi Roeske ◆
J. John Taber '72 and
Kathy Taber ◆
Harry F. White II '72 and
Mary Ann White ■
Amanda Mills Wilcox '72
and Nick Wilcox ◆
Abigail Wine '72 ■
Harrison Wood '72 ●

1973

PARTICIPATION RATE: 24%

Carol Beer Benson '73 and
Peter Doubilet ■
Meg Blanchet '73 ●
Jennifer Lohrke
Christensen '73 and
Paul Christensen
B. Allyn Copp '73 and
Mary Wagley Copp
Thomas Cosinuke '73 and
Anne Kelton ■
Emily Wood Crofoot '73
and Anders Crofoot ■
Sarah Derr '73 ●
David Dolinger '73 and
Anne Marie Whalen ■
Jonathan Evans '73 and
Melissa Graf-Evans ◆
Jan Frazier-Prentice '73
and Jeff Prentice ■
Bruce Haines '73 and
Prudence Procter Haines ◆
Kathe Pikaard Harbour '73
and Craig Harbour ■
Paul Hill '73 and
Laura Griner Hill '75 ■
Barry Hogenauer '73 and
Mary Sommer '73 ■
John Ludlam '73 and
Carolyn Miller ■
William McCrory '73 and
Deborah Wennberg ■
Edward Moon '73 and
Irene Moon ■
Elizabeth Gilbert
Osterman '73 and
Richard Osterman Jr. ●
Jenifer Plummer Rice '73
Bruce Richardson '73 and
Cheryl Richardson ●
Barbara Wright
Schlottfeldt '73 and
Gustavo Schlottfeldt ●
Joseph Strode '73 ■
David Robbins Tien '73
and Alexandra Tien ■
Peter Trueblood '73
and Cynthia Evans
Trueblood '74 ◆

1974

PARTICIPATION RATE: 28%

Mark Amarotico '74 and
Kathryn Amarotico ◆
Kevin Bell '74 ■
Bob Bishop '74 ◆
Peter Brown '74 ◆
John Carnes '74
Lucy Copp '74
Noel Sauls Harbist '74 ■
Eve Hiatt '74 and
Douglas Darling ■
Helen Hill '74
Anne Schlegel Larsson '74
and David Larsson ■
Wendy Gale Lord '74 ●

Douglas Lurio '74 and
Margaret Lurio ■
Jamie McVickar '74 and
Cheryl Olmstead McVickar
Mark Ott '74 and Olivia
Brown Ott '74 ●
Elizabeth Perot '74 ◆
Patricia Carter Pitt '74 ■
Hannah Cope Richter '74 ■
Margaret Rodgers '74 and
Kenneth Mutch ●
Julia Young Russell '74
and George Russell ◆
Faith Salvo '74 and
Stephen Schlissel
Julia Edgerton Simons '74
and Jonathan Simons ■
Tara Sumner '74 and
Edward Ford ●
Peter Trueblood '73
and Cynthia Evans
Trueblood '74 ◆
Eric Weyman '74 ■

1975

PARTICIPATION RATE: 47%

Thomas Abernathy '75
and Elin Waring
Anonymous (3)
Barbara Braatz '75 ◆
Tammy and
Tom Brosius '75 ◆
Byron Caughey '75 and
Pamela Caughey
Cris Coffin '75 and
Roland Kinsman ■
Sarah Hedberg Collings '75 ◆
Christopher B. Cryer '75 ◆
Susan Dixon '75 ■
Bruce Evans '75 and
Toni Evans ●
L. Jay Farrow '75 and
Mary Farrow ■
Marion Fisher '75
Janet Beer Garrett '75 and
John Garrett ■
Elizabeth Butz Hart '75
and Walter Hart ■
Kristen Hawkinson '75 ■
Stuart Hickman '75 and
Johnna Aveiro ●
Paul Hill '73 and Laura
Griner Hill '75 ■
Susan Inglis '75
Mary Kearns O'Brien '75
Deborah Marcopulos
Kitchens '75 ■
Frederic Koenig '75 and
Janet Koenig ◆
Anna Kondolf '75 ■
Elizabeth Cope
McAndrew '75 and
Thomas McAndrew ●
Christopher McCawley '75
and Susan McCawley ◆
Elizabeth McKinstry '75 ■
Ginger Ligenza Mochen '75

Lisa Weiss Murphy '75 and
Thomas Murphy ■
David Nicholson '75 and
Linda Nicholson
Brenda Perkins '75 and
Mark Taylor ◆
Bryan Seith '75 and
Michelle Seith ■
Amy Cronister Silverman '75
and Howard Silverman ■
Catherine Taylor
Spensley '75 and
David Spensley ●
Thomas Taber '75 and
Julie Taber
Ellen Talbot-Yashar '75 ●
Deborah Knott Thomas '75
and R. Gene Thomas
Isaac Thorp '75 ●
Christopher Trueblood '75 ●
David Trumper '75 and
Beth Trumper ■
Anthony Williams '75 and
Shari Williams
Henry Wolf '75 ■

1976

45th Reunion

PARTICIPATION RATE: 26%

Donna Alexander '76 ●
Anonymous
Mary Austin-Palmer '76
and Donald Palmer
Jonathan Bailey '76 and
Leslie Miller Bailey '77 ●
Nancy Burlingham
Brodsky '76 and
Howard Brodsky ●
Catharine Taber Browne '76
and Richard Browne '76
Betsey Copp '76 and
Jozef Konst
Arthur Evans '76 ■
Ellen Cryer Gilbert '76 and
Thomas Gilbert '76 ◆
Katharine Green '76 and
Philip Helzer ■
Cynthia Harvey '76 and
Mark Piscitelli ●
Robert Inglis '76 ●
Robert Isen '76 and
Patricia Isen
Susan Weaver Karper '76
and Larry Karper
Kimberly Ott Keck '76 and
Timothy Keck
Andreas Kronfeld '76 ■
Rebecca Evans Marvil '76
and Joshua Marvil ■
Bonnie Brown
O'Donoghue '76 ◆
Craig Pikaard '76 and
Diane Moyer Pikaard ■
Stephen Sawyer '76 and
Monica Sawyer ●
Mary Bredeson Sheffer '76
and Peter Sheffer ●

John Waldhausen '76 ■
Jeffrey Welsh '76
Matthew Western '76
Constance White '76 and
Gregory Kendall

1977

PARTICIPATION RATE: 23%

Anonymous
Jonathan Bailey '76 and
Leslie Miller Bailey '77 ●
Taylor Boyd '77 and
Maria Boyd ●
Christine Beer Braun '77
and Jens Braun ◆
Michael Fisher '77 and
Sandra Fisher ●
Christian Fox '77 and
Julie Fox ■
David Godsey '77 and
Janet McAlpin
Daniel Goldstein '77 and
Diane Goldstein ■
T. Randolph Grange '77
and Leslie Lamarre
James Hendricks '77 and
Beth Hendricks ■
Edwin James '77 and
Christine James ●
Mac McCoy '77 ■
John McKinstry '77 and
Nancy Crickman ◆
Judy McVickar '77 and
Bard Hill ●
Pamela Mueller '77
Glenn Parker '77 and
Lisa Parker ◆
Frederick Spackman '77 and
Catherine Spackman ■
Edward Taylor '77 ●
Lydia Bodman
Vandenbergh '77 and
David Vandenbergh ●

1978

PARTICIPATION RATE: 15%

Hanno Beck '78 and
Valerie Diamond ●
Robert Coate '78 and
Tracy Coate
Anne Hoskins Emmet '78
and William Emmet II ■
Holly Harper '78 and
Richard Tuttle '79 ■
Scott Henderson '78 and
Jennifer Perkins '78 ■
Mariana J. Johnson '78 ■
Edwin Rock '78 ●
Eric Stonestrom '78
Margaret Thom '78 and
Brian O'Neill ■
Julia van Roden '78 ■
Terry Walker '78 and
Angela Knoble ■
Michael Zislis '78 and
Pam Strauss ■

1979

PARTICIPATION RATE: 18%

Jay Batley '79 ■
Molly Deisroth-Kim '79 and
Joseph Kim
Margaret Cryer Foody '79
and Thomas Foody ●
Linda Richie Guindon '79
and David Guindon ■
Benjamin Hartman '79 and
Donna Campbell
Jeffrey Kline '79 ■
Ann Byerly Marlowe '79
and John Marlowe ●
Kevin Moore '79 and
Mariangela Bravo
de Souza Moore ■
Caro Hall Nishioka '79
and Bruce Nishioka ●
Stacy Richards-Adams '79
Erin Sanders '79
Jeffrey Shapiro '79 and
Christine Shapiro ◆
Keller Hickman
Shinholser '79 and
Steven Shinholser ●
Sandra Sweitzer '79
Holly Harper '78 and
Richard Tuttle '79 ■
Donald Wildman '79 and
Melissa Wildman ■

1980

PARTICIPATION RATE: 21%

Douglas Abernathy '80
and Betsy Abernathy ■
Anonymous (2)
Sandra Bak Baggot '80
and Bruce Baggot *
Miriam Bennett '80 ●
Luis Castillo '80 and
Wendi Lausch Castillo ◆
Christopher Fisher '80 and
Terry Pruett-Fisher
Catherine Schafer
Frankel '80 and
Mark Frankel ■
Erik Freeland '80 and
Margaret Sheehan
Margaret Greene '80 and
Brian Greenberg ■
Kenneth Herrin '80 and
Aimee Allen ■
John C. LaFountain '80 ■
Joseph Matlock '80 and
Rita Matlock ■
Charles Grant
McCorkhill '80
Barbara Nicholson '80 ■
Mark Pinney '80 and
Stacie Pinney
Jonathan Scholl '80 and
Teresa Scholl
Kenneth Tunnell '80 and
Suzanne Tunnell ■
David Walsh '80 ■

Elizabeth Ann Guastavino
Wilks '80 and Thomas
Wilks III ■
Bryan Yeh '80 and
Nicole Griffin ●

1981

40th Reunion

PARTICIPATION RATE: 15%

Anonymous (2)
Kristen Boe Batley '81 and
Robert Batley '81 ■
Susan Passmore
Birdsong '81 and
Donald Birdsong ■
Lisa Shapiro Boehm '81 ●
Kristina Jacobsen
Bouweiri '81
Mary Hurd Harpster '81 and
K. Bruce Harpster ■
Bruce Harrison '81 and
Lisa Cromley ■
Richard Hastings '81 ●
William Hildreth '81 and
Ryan Cooke ●
John Huntington '81 ■
Katherine Lane
Suskevich '81 ◆
Christina Hoffman
Warnick '81 and
Harvey Warnick Jr. ◆

1982

PARTICIPATION RATE: 12%

Karabi Bhattacharyya
Acharya '82 and
Malay Acharya ■
Hugh Bonner '82 and
Andrea Maxwell ■
Kevin Bream '82 and
Kimberly Bream ●
Sarah Davies '82 and
Mark Zec ●
Carlos Diaz '82
John Hoffman '82 and
Sara Hoffman ■
Margaret Humphrey '82
Andrew McIntosh '82 ■
Kenneth McLean '82 and
Amy Earle McLean ■
Tacy Paul Roby '82 and
Scott Roby ●
Drew Smith '82 and
Rebecca O'Leary ■
Richard Young '82 and
Carol Young
Heather Zimmerman '82

1983

PARTICIPATION RATE: 18%

Timothy Battin '83 ●
Nathan Bohn '83 and
Jane Adams Bohn ◆
Benjamin Brown '83 ●
Matthew Chin '83 and
Melissa Chin ■

Allison Mahoney Conkin '83
and Riley Conkin ■
Marion Dear '83 and
Marc Dear ◆
Richard Engler '83 ■
Joshua Goldman-
Brown '83 and Lauren
Goldman-Brown ■
Jerry Hoberman '83 ◆
Buxton Midyette '83 ●
Susan Chase N'Garnim '83
and Saleh N'Garnim ■
Henry Osborn '83 and
Sara Osborn ◆
Christopher Sharples '83
Will Starr '83 and
Lise Reno ●
Keith Walker '83
Christopher Wills '83 and
Kirstie Miller Wills '83 ■

1984

PARTICIPATION RATE: 16%

Anonymous
Katherine Ernst Bauer '84
and Don Bauer ■
Melanie Dalsimer '84
Roger Doherty '84 and
Jeanne Doherty ■
Alica Johnson-Grafe '84
and Richard Grafe
Stephen S. Magee '84 ◆
Sarah Brown Margolis '84
and Steven Margolis '84
Carolyn Mayo '84 ■
Wendy McCollough '84
Mark Perkins '84 and
Donelda Perkins
Keith Reeves '84
David Roberts '84 and
Lee Parshall Roberts '85 ■
Dina Patukas Schmidt '84
and Matthew Schmidt ■
Samuel Wagner '84 and
Allison Wagner ●
Catherine Hoffman
Wickens '84 and
Justin Wickens ●

1985

PARTICIPATION RATE: 15%

Sarah Myers
Bohorquez '85 ●
J. Todd Brown '85 ◆
Amanda Dowty Derr '85
and Samuel Derr '85 ■
Tony Fross '85 and
Katrin van Dam ■
Glenn Giddings '85 and
Gabrielle Giddings ◆
Willard Hurd '85 and
Heather Petit
Isabel Johnson '85 ●
Julie Keene '85 and
Christopher Eskesen

Joan Laughner '85 and
David Perkovich
David Roberts '84 and
Lee Parshall Roberts '85 ■
Frederick Robinson '85
Tom Rogers '85 ●
E. Daniel Sanders '85
and Karen Sanders
Thomas Wagner '85 and
Kristin B. Wagner ■
Shelagh Wilson '85 ◆

1986

35th Reunion

PARTICIPATION RATE: 16%

Anonymous
Betsy Brown '86 ■
Rachel Clarke '86 and
Tim Freeman '87 ●
Marpa Eager '86 and
Susan Pocharski ●
Jennifer Kirk Ferrell '86
and Kevin Ferrell ■
Joshua Foster '86 ●
Carol Wetherill Goldstein '86
and Michael Goldstein ■
Gunn Kongkatong '86
Kip Martin '86 and
Renee Rockwood ●
Richard Post '86 and
Jennifer Austrian ●
Mayland Crosson Reilly '86
and Sean Reilly ●
Christine Riviello '86 and
James Wilson Jr.
Margaret Ogle Welsh '86
and Scott Welsh ●
Burch Wilkes '86
Hsin-Ta Wu '86 ■

1987

PARTICIPATION RATE: 14%

Anonymous
Nathaniel Cabot '87 and
Sally Rickell Cabot
William Demps '87
Jovi Fairchild '87 and
Vincent Bradley ■
Rachel Clarke '86 and
Timothy Freeman '87 ●
Bruce Hager '87 and
Lia Hager ■
Bruce and Lia Hager Fund
of The Greater Cincinnati
Foundation
Thomas Kuchel '87
Ethan Perry '87 and
Meredith Cornett ●
Anthony Ross '87 ●
Margaret Baker
Strickland '87 and
Bowe Strickland
Sharon Bear Terrill '87
and Brian Terrill ●
Douglas J. Waltman '87
Maximillian Yeh '87 ■



1988**PARTICIPATION RATE: 8%**

Heather Roper Berner '88 and Gregory Berner
Melinda Wenner Bradley '88 and Matthew Bradley
Jonathan Brown '88 and Alison Brown
Amy Louise Binkley
Chandler '88 and Loch Chandler
Marion Greene '88
George Hamilton '88
Jonathan Ogle '88 and Heather Gosse ■
Michael Sicoli '88 and Kirsten Albers ■

1989**PARTICIPATION RATE: 8%**

Barbara Drayer '89 ♦
Seth Forman '89 ■
Carmen Niethammer '89 and Claus Biering ■
Hannah Fretz Pierpont '89 and Daniel Pierpont ■
Clark Rinard '89 ■
Pepper Allen Schweizer '89 and Roman Schweizer ■
Rebecca Loud Zug '89 and James Zug Jr. ♦

1990**PARTICIPATION RATE: 13%**

Christopher Benbow '90 and Alejandra Navarro-Benbow ■
Ruth Magoon Eriksson '90 and Torkel Eriksson ■
Matthew Henry '90 and Kristin Henry ■
Bruce James '90 and Lauren Johnson James '92 ■
Victoria Jones '90 ■
Leah Kalotay '90
Ann Freeman Keitner '90 and Haydon Keitner ■
David Kessler '90 ■
Alice Lane Koerner '90 and Dan Koerner ■
Jess Lord '90 and Andrea Nuneviller ■
Yuko Nishino '90
Jason Oberfest '90 and Celeste Oberfest
Regen O'Malley '90 and David Knaul
David Watson '90 and Kirsten Hesse ■

1991**30th Reunion****PARTICIPATION RATE: 18%**

Anonymous
Karen Bream '91 and Daniel Stasny ♦
Julia Steckel Fleischner '91 and David Fleischner ♦
Richard Goulding '91 and Beth Dimock Goulding ■
Joshua Haines '91 and Heather Haines
Peter Jordan '91 ■
Amy Lytle '91 and Steven Bird ■
Laura Perry '91 and Dana Blumenthal ■
Chris Ronis '91 ■
Alan Schwartz '91 ■
Laura Sell '91 and Matthew Frank ■
Nathan Slack '91 and Julie Slack ■
Brian Sowell '91 and Jill Rothblatt Sowell ■
Erica Spackman '91
Rebecca Tatum '91 ■
Jennifer Telfair '91 and Steve Cha ■
Alexandra Zinnes '91 and Andrew Goodman ♦

1992**PARTICIPATION RATE: 12%**

Anonymous
Brennan Barnard '92 ■
Lydia Bryans '92 and Georgiy Shashkov ■
Scott Gallagher '92 ■
Christopher Hallward '92 and Maia Carter Hallward ■
Alan Henderson '92 and Hannah Caldwell Henderson ■
Christa Martini Henson '92 ■
Lupin Hill Hipp '92 and Richard Hipp
Jonathan Hovey '92 ■
Gregory Jacob '92
Bruce James '90 and Lauren Johnson James '92 ■
Robin Niethammer '92 and Zhantong Guo ■

1993**PARTICIPATION RATE: 7%**

Diya Ala'Edeen '93 ■
Nina McIntyre Anderson '93 and Edward Anderson Jr.
Kerry DiGiacomo '93 ■
Joshua Feissner '93 ■
Seth Haines '93 ■
Erica Broennle Nelson '93 and Lathrop Nelson III ■
Paul Yingling '93 and Danielle Yingling ■

1994**PARTICIPATION RATE: 8%**

Anonymous
Delphine Barringer-Mills '94 and Michael Barringer-Mills ■
Benjamin Chaffin '94 ■
Matthew Lawson '94 and Andrea Lawson ■
Dale Lertjuntharangool '94 and Shynowa Lertjuntharangool ■
Robert Lieber '94 and Jeanie Lieber ■
Hillary Murray '94 ■
Cassandra Costello Surrena '94 and Jason Surrena ■
Miki Tashiro Todd '94 and Joey Todd

1995**PARTICIPATION RATE: 13%**

L. Jonathan Baldivieso '95 ■
Jeremy Burke '95
Zoe Culbertson '95 and Robert de Saint Phalle '97
Diana Evans '95 and Marc D'Urbano '95 ♦
Patrick Hughes '95 ■
Lauren Kenworthy Jarrell '95 and Jonathan Jarrell ■
Emily Morningstar '95 ■
Ada Hogan Porter '95 ■
Jermaine Sailsman '95 ■
Peter Sheridan '95 and Wendi McAden Sheridan '96
Benjamin Thornber '95 and Eva Thornber

1996**25th Reunion****PARTICIPATION RATE: 12%**

Anonymous (2)
Elizabeth Fisher '96
Rachel Putnam '97 and Alan Holzer '96 ♦
Catherine Hughes '96 and Christina Baumgardner
Christina James '96
Helen Marrow '96 and Michael Redd ♦
Kelli McIntyre '96 ■
Dan Packel '96 ■
Marko Prsic '96 and Ivana Prsic ■
Heather Painter Scholtes '96 and Michael Scholtes ♦
Wendi McAden Sheridan '96 and Peter Sheridan '95
James Winslow '96

1997**PARTICIPATION RATE: 11%**

Zoe Culbertson '95 and Robert de Saint Phalle '97
Kristy DiGiacomo '97
David Kim '97
Anna Randall Painter '97 and Robert Painter
Elizabeth Stokes Pilar '97 and Gabriel Pilar ■
Rachel Putnam '97 and Alan Holzer '96 ♦
Amanda Atterbury Ryan '97 and Kevin Ryan ■
Caroline Adams
Saenger '97 and Christopher Saenger '97 ♦
Adam Salo '97 and Marta Willgoose Salo

1998**PARTICIPATION RATE: 7%**

Justin Barnard '98 and Jessa Barnard ■
Leigh James Castanos '98 and Ryan Castanos ■
Charles Dudas '98 and Alison Willson Dudas ■
Gulielma Fager '98 ■
Brendan Mahon '98
Whitney Hoffman Suttell '98 and Brit Suttell ■
Erika Davies Swarhout '98 and Paul Swarhout
Michael Talis '98 ■

1999**PARTICIPATION RATE: 12%**

Amy Ackerman Glanden '99 and Matthew Glanden
Lindsay Franklin '99 ■
James Gibboney '99 and Rebecca Sheldon Gibboney '99 ■
Shane Hadden '99 ■
Andrew McKinstry-Wu '99 and Sarah McKinstry-Wu ■
Matthew Rankin '99 and Rebecca Rankin ■
Meredith Chalfant
Roberts '99 and Andrae Roberts
Beirne Roose-Snyder '99 and Adam Keller ■
Daryl Shore '99 ■

2000**PARTICIPATION RATE: 10%**

Theodore Cleary '00
Allison Dutton '00 and Joe Boruchow ■
Wally Hachil '00
Alex Kaplan '00 and Gwen McEntee Kaplan '03 ■
Catherine McConney '00 and John Arce ■

Jessica Morley-Heacock '00 and John Heacock ■
Michelle Parks Scheibe '00 and Paul Scheibe ■
Jamie Shinn '00
Joseph Townsend '00 and Tara Townsend ■
Jordan Upton '00 and Sandy Rubin Upton ■

2001**20th Reunion****PARTICIPATION RATE: 11%**

Francis Abbott '01 and Rachel Abbott ■
Kendra Smedley Adey '01 and Bradley Adey
Benjamin Cooper '01 ♦
Nneka Nwosu Faison '01 ■
Kara Gillam '01 ■
Samantha Thomson
Jordan '01 and Drew Jordan ■
Alston Lambert '01
Felicia Potter '01
Kristy Embrack Searles '01 and Curan Searles ■
Hannah Woodward '01 ■
Emily O'Donnell Ziemba '01 and Jay Ziemba ■

2002**PARTICIPATION RATE: 10%**

Ellie Andrews '02 ■
David Berman '02 and Lacy Sommer
Sara Blachman '02 ■
Beah Burger-Lenehan '02 and Daniel Burger-Lenehan ■
Lydia Davies Williamson '02 and David Williamson
Nerina Burton Fleegle '02 and Conner Fleegle ■
Sarah Jones '02 and Karl Krause
Andrew Kane '02 ■
Obinna Nwosu '02 and Alisha Nwosu ■
Nicolas Viavant '02

2003**PARTICIPATION RATE: 14%**

William Abbott '03 and Katie Ermilio ■
Anonymous
Madeleine Bech '03
Alex Kaplan '00 and Gwen McEntee Kaplan '03 ■
Mutinda Kivuitu '03 ■
Elisa Kubler '03
Andrew LaManna '03 ■
Katherine McKinstry '03 and Marc Badger ■
Tucker O'Donnell '03
Stephanie Reaves '03 ■
Katrina Rogachevsky '03 ■

WESTTOWN FUND / CURRENT STUDENTS / PARENTS

Timothy Shepherd '03
Danielle Toalton '03 and
Leslie Theophile ■
Karl Vela '03 ■

2004

PARTICIPATION RATE: 10%
Adele Carr Abbott '04 and
Maxwell Abbott '05 ■
Edward Alvarez Eskew '04 ●
Anonymous
Elizabeth Backup '04
Katherine Hanrahan
Christiano '04 and
Drew Christiano ●
Lisa Esposito '04
Amanda Thomforde Kent '04
and Allen Kent
Nathaniel Manning '04
and Sunisa Manning ●
Katharine Montgomery '04
and Jon Lennon ■
Henry Schlimme '04
and Rebecca Davis
Schlimme '04 ■
Benjamin Testerman '04 ■

2005

PARTICIPATION RATE: 11%
Maxwell Abbott '05 and
Adele Carr Abbott '04 ■
Stuart Brooks '05
Lorin Brown '05
Andrew Kraus '05 and
Allison Webster ■
Sophie Ragone '05 ■
Cynthia Onyekachi
Robinson '05
Kevin Roose '05 and
Tovah Ackerman ■
Luther Shank '05
Andrew Van '05 ●
Tobias Wilson '05 ■

2006

15th Reunion
PARTICIPATION RATE: 15%
Ashlee Adams '06
Anonymous (3)
Rachel Brown '06
Zachary Bull '06
Bennett Caughey '06 ■
Flor Cruz '06
Emma Graham '06 and
Greg Myers ●
Eva Herzog '06
Fiona Kirkpatrick '06 ■
Debra Lenik '06
Phillip Ligon '06 ■
Luke McKinstry '06
Dana Reinert '06

2007

PARTICIPATION RATE: 4%
Emily Temple Abels '07
and Kathleen Abels ■
Anonymous
Lauren Fedor Friend '07
and Joe Friend ■
Allison Doub Hepworth '07 ●

2008

PARTICIPATION RATE: 10%
Cody Abbott '08 and
Liza Abbott ■
Anonymous
Elizabeth Bailey '08 ●
Willa Caughey '08
Emily Connor '08 ●
Erin Donohoe '08 ■
Ruby Fairchild '08
Averyl Hall '08 ■
Marella Houghton '08
Ian Hutton '08 and
Jessica Hutton ■
Alexandra MacColl
Garfinkel '08 and
Robert Roche '08 ●
Clyde McKee '08 ●

2009

PARTICIPATION RATE: 8%
Madelaine Fye
Breimhurst '09 and
Daniel Breimhurst '09 ●
Karen Gilbert '09 ■
Lars Magnus Hvass
Pujol '09
Maya Manning '09 ■
Sean McEntee '09
Francis Miller '09 ●
Ian Perkins-Taylor '09 ■
Alexandra Wilson '09

2010

PARTICIPATION RATE: 8%
Anonymous (2)
Taylor Reustle Brewster '10
and Thomas Brewster ●
Hannah Graf Evans '10 ■
Kathryn Grossman '10 ●
Kaitlin Jones '10
Julia Hudson Kim '10 and
Christopher Kim
Benjamin E. McLean '10
Nelson Sproat '10 ●
Emma Weidinger '10 ■
Effie Hanghang Zhang '10
and Daniel Jing ●

2011

10th Reunion
PARTICIPATION RATE: 5%
William Dietsche '11 ●
Malinda Dobbins '11 ■
Justine Lohrey '11 ■
Jacob Ritts '11 ■
JohnMichael Sedor '11 ●
Nanribet Yiljep '11 ■

2012

PARTICIPATION RATE: 1%
Alanna Phillips '12

2013

PARTICIPATION RATE: 7%
David Harrison '13
Meredith Hudson '13 ●
Jingyao Liu '13
Tong Luo '13
Nicole Solano-Asamoah '13 ■
Nicolas Starr '13 ●
Thin Tran '13 ●
Rachel Wortmann '13 ■

2014

PARTICIPATION RATE: 7%
Katira Dobbins '14 ■
Thomas Gauger '14
Jeremy Graf Evans '14 ■
Mary Beth Melso '14 ●
Katie Schick '14 ●
Stephanie Schick '14 ●
Elizabeth Sexton '14 ■
Meng-Hua Shen '14 ●
Nathaniel Urban '14 ■

2015

PARTICIPATION RATE: 1%
Sarah Moldoff '15 ■

2016

5th Reunion

PARTICIPATION RATE: 6%
Elyse Gadra '16
Sora Park '16 ●
Sammie Pavlov '16 ■
Colin Perkins-Taylor '16 ■
Julia Richards '16
Hannah Zuckerberg '16 ●

2017

PARTICIPATION RATE: 4%
Abigail Domenick '17 ●
Tengqin Han '17 ●
India Henderson '17
Julia Pavlov '17 ■
Rebecca Schmidt '17 ■

2018

PARTICIPATION RATE: 6%
Anna Harrison '18
Keri McGill '18 ●
Ethan McLearn '18 ●
Jonathan Moldoff '18 ●
Nicholas Sokoll '18 ●
Yunxiao Wang '18

2019

PARTICIPATION RATE: 1%
Frederick Gessl '19

2020

PARTICIPATION RATE: 8%
Stephen Blair '20
Julius Enarsson
Enestrom '20

Nicholas Hanchak '20
Maren Hapeman '20
Evelyn McLearn '20
Daniel Scheff '20
Laurens Van Alen '20
Olivia Willis '20 ●

CURRENT STUDENTS

Bryce Lander '21 ●
Jadyn Williams '21
Nelson Zhang '21
Yahya Abu Shawish '22
Wade Chiddick '22
Amelia Eager '23
Elise Komarinski '23
Alexandra Unrath '24 ●
Joseph Burns '26 ●
Amelia Komarinski '26
Quinlan McLearn '26
Henry Anstine '27
Dane Alexander Cook '27
Henry Burns '28 ●
Chloe Cook '28
Noah Komarinski '28
Evalyn Hayman '29
Michael Price '30 ●

PARENTS

2021

PARTICIPATION RATE: 22%
Annie and Lee Allman ●
Regina Buonocore and
Kenneth Lander
Jie Chen and Ming Yan ●
Gifford Eldredge ■
Jessica Eldredge
Paul Gilbert and Susan
Braithwaite Gilbert ●
Nicholas and
Patricia Hanchak
Richard Hankin ■
Karen Herrling and
Daniel Porterfield ●
Weichao Hu and
Guozhen Wang ●
Amy Johnson ●
Samantha Thomson
Jordan '01 and
Drew Jordan ■
Kristine and Jason Lisi ●
Robin and
Terrance McKeon ●
William and
Maureen Monahan ■
Roy and Tracey Moore ●
Julie Pangburn
Mónica Ruiz ■
Charlotte Triefus and
Lloyd Zuckerberg ■
Ann and Matthew
Troshinsky
Susan and Brian
Waterhouse ■

Nicole Whitaker
Megan E. Zawawski
Hui Zhang ●

2022

PARTICIPATION RATE: 27%
David and Taylor Boyer
Melinda Wenner Bradley '88
and Matthew Bradley
Alvin Brewer and
Elaine Sims
Crystal and Troy Chiddick ●
Alicia and James Chin ■
Tara and Drew Grabel
Family ●
Yong Han and Lei Tan
Gary and Eryn Holloway ■
Sanjay and Heather Jain ●
Wenling Jin and
Youhui Wang ●
Keenan Family ●
Yongcong Kou and
Xiaofang Liu
Weiming Ma and Song Shi ●
Haibin Mao and
Hong Cheng ●
Marycate and Bill
McDonough ●
Jamie McVickar '74 and
Cheryl Olmstead McVickar
Stephany Mejia
Pamela and Peter Nagy
Mayland Crosson Reilly '86
and Sean Reilly ●
John and Kimberly Richards
Edward and Elena Samane
Jonathan Scholl '80 and
Teresa Scholl
David and Sabine Shaman ■
Chunhuai Shi and
Desheng Zhang ●
Cathy Toner and Jim Tobin ■
Drew and Annie Ulichney ■
Colby and Robert Van Alen ■
Yugang Zhang and
Huixia Wang ●

2023

PARTICIPATION RATE: 36%
Karabi Bhattacharyya
Acharya '82 and
Malay Acharya ■
Andrew Allison
Anonymous
Christopher Benbow '90
and Alejandra Navarro-
Benbow ■
David and Pamela Cloud
Stephen and Jennifer Clunk
Joseph Daniels II and
Inger Hatlen ■
Marpa Eager '86 and
Susan Pocharski ●
Ruth Magoon Eriksson '90
and Torkel Eriksson ■
Jovi Fairchild '87 and
Vincent Bradley ■

Michael and Michelle Fisher ●
 Amy and Pete Flynn ■
 Paul Goldbecker and Kim Stack
 Carol Wetherill Goldstein '86 and Michael Goldstein ■
 Guoyin Huang and Bin Lian ●
 Greta Hudak and Wayne Peischl ●
 Penelope and Stephen Johnson ■
 Julie Keene '85 and Christopher Eskesen
 Scott and Sarah Komarinski ●
 Michael Kostal and Ina Li
 William and Jennifer Le Febvre ■
 Carter and Jennifer Lee ■
 Jeffrey and Susan Lipson
 Amy and Donald Lynn ■
 Mark and Alix Mayock
 Christopher and Jennifer McKinley
 Steven Mitchell and Noelle Callahan
 Roy and Tracey Moore ●
 Kevin Ochis and Martina Vozarova ●
 Naresh and Saroj Ramdas ●
 Michael and Susan Rhile
 Caroline Adams Saenger '97 and Christopher Saenger '97 ◆
 Dario and Laura Salvucci ●
 Meghan and William Sayer ■
 Reid and Shannan Schuster
 Nathaniel King and Nicole Scott-King
 Yanfa Tang and Zijing Wang ●
 Feifei Xue ●

2024

PARTICIPATION RATE: 38%
 Anonymous (3)
 Sola and Lola Cardoso
 Stephen and Jennifer Clunk
 Gina Colley-Holgate and Gregg Holgate ●
 David DiStefano
 Amy Fox
 Paul Gilbert and Susan Braithwaite Gilbert ●
 Daniel and Angela Golub
 Tara and Drew Grabel Family ●
 Andrew Hart and Christine Venturis ●
 Jeffery and Heather Hayter
 Xiuying Huang and Jiezi Wang ●
 Sanjay and Heather Jain ●
 Jeffrey and Lori Jansen ●

Nkechinyere and Chukwuemeka Kamalu Achike
 Garrett and Alexis Kletjian ●
 The Donna M. Kletjian 2014 Charitable Lead Trust
 Jian Kuang and Liangqiong Zhang
 Bradley and Maura Leeper ●
 Ming Li and Tianshu Teng
 Amy Lytle '91 and Steven Bird ●
 Marycate and Bill McDonough ●
 Buxton Midyette '83 ●
 Robert Mojica and Kathleen Boyle
 Dario and Laura Salvucci ●
 David and Sabine Shaman ■
 Paul Shirk and Janet Zeis ●
 Erika Davies Swarthout '98 and Paul Swarthout
 Aric Unrath ■
 Susan and Brian Waterhouse ■
 Megan Williams and Gregory Gatto ■
 DePaula Woods
 Mingang Wu and Jing Zhang
 Ming and Lin Zhao

2025

PARTICIPATION RATE: 45%
 Anonymous (2)
 Christopher Benbow '90 and Alejandra Navarro-Benbow ■
 Emily and John Black ●
 Cheryl and Elson Oshman Blunt ■
 Melinda Wenner Bradley '88 and Matthew Bradley
 Mary Ann Bucklin and David Hufford
 Christopher and Lisa Chapman ●
 Alicia and James Chin ■
 Marpa Eager '86 and Susan Pocharski ●
 Michael and Michelle Fisher ●
 Gary and Eryn Holloway ■
 Dana Jensen ■
 Jennifer and Joseph Jones
 Janine and Joseph Marsini
 Susan O'Donnell and Stephen Smith ●
 Mónica Ruiz ■
 Edward and Elena Samane
 Meghan and William Sayer ■
 Ellen Songle ■
 Tuckman Family
 Lisa and Robert Vosburgh ●
 Deirdre and Jonathan Zangwill ●

2026

PARTICIPATION RATE: 36%
 Anonymous
 Jesse and Mireia Bartholomae ■
 Anne and Joseph Burns ■
 Gina Colley-Holgate and Gregg Holgate ●
 Jennifer Dorfman and Gabe Venit ■
 Theodore Freeman and Jessica Smith ■
 Enelia Gonzalez and Harry Griendling ●
 Garrett and Alexis Kletjian ●
 The Donna M. Kletjian 2014 Charitable Lead Trust
 Scott and Sarah Komarinski ●
 Amy and Donald Lynn ■
 Marycate and Bill McDonough ●
 Claire and Robert McLearn ■
 Robert Mojica and Kathleen Boyle
 LaToya Myers ■
 Michael and Nicole Wiley
 Deirdre and Jonathan Zangwill ●

2027

PARTICIPATION RATE: 45%
 Anonymous (3)
 Robert Benedix and Jennifer Kerbeck ●
 Frances and Stacey Butch
 The Cook Family
 Jaime and James Morefield ■
 Joseph and Victoria Moschella ■
 Orloff Phillips and Tamara Gray-Phillips ●
 John and Silenia Rhoads
 Dorothy Salisbury ●
 Elizabeth Salisbury ●
 Ellen Songle ■
 Jim Viner ●
 Kendra Viner ●
 Lisa and Robert Vosburgh ●
 Kristen and Eric Waterfield ■
 Melissa and Lane Wiggers
 Amanda and Eric Young ●

2028

PARTICIPATION RATE: 44%
 Anonymous
 David Biddison and Patricia Keegan ●
 Anne and Joseph Burns ■
 The Cook Family
 Theodore Freeman and Jessica Smith ■
 Joaquim and Intisar Hamilton ●
 Dana Jensen ■

Scott and Sarah Komarinski ●
 Abigail and Brandon Lausch ■
 Amy and Donald Lynn ■
 Robert Mojica and Kathleen Boyle
 Catherine and Bryan Nicholson
 Pamela Purser and Matthew Webb ●
 Aqeel Siddiqui and Somera Ali
 Jennifer and Scott Simpson ●
 Nicole and Jeff Vonnahme ■
 Maria and Shawn Weede ●

2029

PARTICIPATION RATE: 36%
 Kendra Smedley Adey '01 and Bradley Adey
 Anonymous
 Emily and John Black ●
 Jillian and Jonathan Davidson
 Jennifer Dorfman and Gabe Venit ■
 David and Kara Fontes ■
 Jordan and Kristin Hayman ●
 Karen Lorenz and John Muller
 Janine and Joseph Marsini
 Tearson and Jason Morrison ■
 John and Silenia Rhoads
 John and Kimberly Richards

2030

PARTICIPATION RATE: 59%
 Anonymous (3)
 Jesse and Mireia Bartholomae ■
 Jillian and Jonathan Davidson
 Esau and Kahlilah Dowe
 Manaf and Stephani Farhan
 Jaime Cesar Giraldo Arango and Maria Consuelo Lozano Celis ●
 Joaquim and Intisar Hamilton ●
 Allison Kimmins and Clarence Jenkins ●
 Benjamin and Joy Mears ●
 Pamela Purser and Matthew Webb ●
 Matthew Rankin '99 and Rebecca Rankin ●
 John and Silenia Rhoads
 Joshua and Renea Ryan ●
 Jennifer and Scott Simpson ●
 Whitney Hoffman Suttell '98 and Brit Suttell ■

Courtney Tyus and Michael Price ■
 Nicole and Jeff Vonnahme ■
 Christin and Edward Westerman ●
 Amanda and Eric Young ●

2031

PARTICIPATION RATE: 38%
 Kendra Smedley Adey '01 and Bradley Adey
 Anonymous
 Jennifer Cluss ■
 Laura and Julian Dimery
 Christine Henwood-Costa and Anthony Costa ■
 Abigail and Brandon Lausch ■
 Karen Lorenz and John Muller
 Benjamin and Joy Mears ●
 Rachel Pearl and Darren Trumeter ●
 Joshua and Elizabeth Reilly ■
 Mónica Ruiz ■
 Henry Schlimme '04 and Rebecca Davis Schlimme '04 ■
 Mr. & Mrs. Kevin M. Shields ●

2032

PARTICIPATION RATE: 33%
 Jennifer Dorfman and Gabe Venit ■
 Kevin and Jamie Eppler ■
 David and Kara Fontes ■
 Amanda and Matthew Huskey ■
 Samantha Thomson
 Jordan '01 and Drew Jordan ■
 Catherine and Bryan Nicholson
 Orloff Phillips and Tamara Gray-Phillips ●
 Joshua and Renea Ryan ●
 Maria and Shawn Weede ●

2033

PARTICIPATION RATE: 26%
 Anonymous
 Nicholas and Taylor Beard ●
 Zhichao Chen and Jing Shu
 Laura and Julian Dimery
 Matthew Rankin '99 and Rebecca Rankin ●
 Christin and Edward Westerman ●

2034

PARTICIPATION RATE: 33%
 Kevin and Jamie Eppler ■
 Samantha Thomson
 Jordan '01 and Drew Jordan ■

Amy and Bradley Liermann ■
Henry Schlimme '04 and Rebecca Davis Schlimme '04 ■

COMMUNITY PARENTS OF ALUMNI/AE/X, GRANDPARENTS, GRANDPARENTS OF ALUMNI/AE/X, FACULTY, STAFF, TRUSTEES, AND FRIENDS

Ellen and Ferguson Abbott ■
Frances and Francis Abbott ♦
Donald and Elizabeth Adams ■
Mrs. Thomas R. Adams ■
William Addis ■
Brent and Deirdre Alderfer
Karen Ali ●
Andre Allen
Douglas Allen ●
Edward and Betsy Allinson ■
Lillian Alston
David Alten
Judith and Wilbur Amand ●
Janet Amighi
Anonymous (21)
Anthony-Kemp Family ●
Frank and Margie Anthony ■
Graham and Wendy Argent-Belcher ♦
Ellie and Richard Armstrong
Lynette Assarsson ■
Alex Ates and Dustin Atchinson
David Atkinson ■
Elizabeth Atterbury ■
Elloit and Suzanne Axel
Agnes K. Bacon ■
John and Aminda Baird ■
Timothy Barnard and Meredyth Patterson ■
Phil Barnett and Colleen Philbin ■
Leslie and Steve Barr ■
Karl and Kathy Barth ■
Samuel Baxendale ■
Daniel Beane ■
Martha and Thomas Bell ●
Sandra Beneyto
Becky and Mitch Bernstein ■
Kelsey Bernstein ●
Thomas Berrian ●
Barbara and Larry Biddison
Claire and Henry Blair ■
Scott and Patricia Bowes ●
Katee Boyle-Mojica
Edwin and Deborah Boynton ■
Emma Bracker ■
Patrick Bradley and Ellen Mayock ●

Ruth Bradley and Charles Weld ■
Alice Goldberg Braun
Anne and Robert Bright ♦
Carol and Robert Briselli ■
Juliene and A. Michael Broennle ■
Mary and Stuart Brooks ■
Joanna Brown ●
Wendy Brown ●
John Buckey
Buckingham Mountain Foundation
Lisette Bunting-Perry and James Perry ♦
Daniel Burger-Lenehan and Alexandra Burger-Lenehan '02 ■
Robert Burgess and Elizabeth Morrison
Dorothy and Joe Burns
Bridget and Abbey Cadden
Edward Callahan
Suzanne and Giles Cannon ■
Michael Carr and Pat McPeake ♦
Georgia Carrington ●
Ryan Castanos and Leigh James Castanos '98 ■
Patricia Chavez ■
Dennis Chien ●
Ginny Christensen
Carol Clark ■
Catherine and William Cleary ■
Jay and Randi Coen Gilbert ■
John and Kay Coldiron
Hardin and Gail Coleman ●
Anne Collins ●
Deayna Collins
Marissa Colston and Jeanne Thompson ■
Steven and Susan Compton ■
Eugenie Copp ●
Genie Copp
Lulu Cossich ●
Douglas and Susan Cotton ■
Johanna and Ryan Coyle ■
Dick and Martha Coyle ●
Lisa Cromley and Bruce Harrison '81 ■
Mayland Crosson ■
Inge Danforth ●
Eloise Daughenbaugh ●
William Daughenbaugh ●
John and Rebecca Davidson ■
Marc Dear and Marion Van Arkel Dear '83 ♦
John and Kathryn Dech ■
Larry and Jeanelle Dech ■
Matt DeFiore
Mark Del Negro ■
Susan DeLuca ■
Jack and Sharon Denton ●

Claudia DeSimone
Jackie DeTrano
Tracy and Dennis DiGinto ●
Ira and Susan Disman ■
David Dondero and Katherine Platt ■
Katherine and Kyle Donnelly ●
Mabel Downing ●
Erika Drezner ●
Bernadette and Cal Driscoll ■
Wendy and Larry Dubas ■
Joseph and Marion Dugan ■
Faith D'Urbano
Douglas Eakeley ●
Edward Edgerton and Melissa Meyer ■
Anne and Barry Eiswerth ■
Janann Eldredge ●
Charles and Jane Eldredge ■
David and Lisa Eldridge
Bill and Diane Elliot Fund of Community Foundation
Serving Western Virginia ■
Allan Ells and Allison Moore ■
John R. Embick and Sallie C. Welte ■
Per and Anna Karin Enarsson
Mary Erceg and Joseph Erceg * ♦
Donna Erwin ●
Peg Ewing ●
Henry Fader, Esq.
Susan Carney Fahey and Robert Fahey ■
Sherri Farenwald ●
Janet Favero ●
Andrew Fetzer and Hilary Simons ■
Carmella and William Fifty ■
John and Jennie Fischer ●
Charis Fisher
Nancy Fisher ●
Caroline Flagler ■
Marilyn and Philip Flagler ●
Anita Franklin Love ■
Albert Freedman ■
Douglas Freeman ■
Dana Frohwein
Marian and Nicholas Fuller ■
David and Jean Gadra ●
Janice Gale
Karen and Kevin Gallagher ■
Wilson and Maria Garrido ●
James Gaynor ■
Alicia George ●
Douglas and Jean Gessl ●
Gessner Family ■
Pamela Gibboney ●
Linda and Cal Ging ♦
Mrs. George S. Glenn ■
Samantha Godoy

John Goertzel and Sue Ellen White ♦
Susan Gold ■
Patricia Gray ●
Michael and Roberta Graybill ■
Denham Grearson
E. Thomas and Margaret Greene ♦
Alicia Griffith ■
Barbara Grigsby
Jean Grim
Sandra and Mark Gross ■
Lee Grunwell ■
Rick Grunwell ■
Leigh and Bethany Guarino ●
Dale Guarneri ●
A. Raechel and David Hackney ●
Susan Haines ♦
Carolyn and Jeffrey Hapeman ■
Alena Hasikova ■
Virginia and Howard Hastings ●
Delores Hatter ■
Alice and Peter Hausmann ■
Annette Hearing
Susan and Douglas Heckrotte
James and Amy Hemphill
Andrew and Marion Henderson
Madeleine and Phillip Henderson ♦
Matthew Herrera
Thomas and Barbara Hill
Cheryl and Ken Hochberg ■
Ronald Hoham ■
Carl and Elizabeth Holden ■
Gary M. and Patricia B. Holloway ■
Sinead Horan ●
Carolyn Horter ■
Dana Davis Houghton ●
Walwyn and Betsey Hughes
Chuck Hurchalla
Ann and Steven Hutton ■
Laura Hutton
Kathryn Ionata
Muneer Ismail and Neda Barghouthi
DeLea Jacobs
Joplin James ●
Luis and Zorela Jimenez ■
Elizabeth Jones ♦
Frances Jueds ●
Victoria Jueds ■
Theodore Kalsbeek
James and Janet Kane ●
Robert and Mary Kay ●
Kurt and Sarah Kebaugh ■
Soo Kyong Kim ■
Ernest and Gabrielle Kimmel ■

Jon Kimmel and Betsy Swan ■
Steffenie Oliver Kirkpatrick ♦
Virginia Knappenberger ●
Rosemarie Alken Koenig and John Koenig ■
Mike and Kiran Koons ●
Joan and Robert Lane ♦
Celia and Christopher Lang ●
Mr. and Mrs. Frank Mentch ■
John Lee and Joyce Nagata ■
Linda and Bill Lee ♦
Barbara Lemmen and Geoff Nunes ■
Jane and Richard Levy ■
Eliza Lewis ●
Michelle Lewis
Xu Li ■
Naemah Liggins
Sally Lind ●
Caroline and Timothy Loose
Ted Lutkus, Jr. and Anna Passyn ■
Barbara and David MacInnes ●
Cynthia and Peter Madden ■
Nancy Madden ■
Kristen Makatche ●
Diane Mallery ●
Libbi and Christopher Mangeri ■
Jody Manning
Joe and Barbara Marchese ■
Sharon Marlowe ■
Zoe and Timothy Marshall ●
John and Rosanne Martin ●
Cynthia and Joseph Mastro ■
Debbie Mathews ■
Peg Matsen ●
Kevin McCadden ●
William and Deirdre McCain ■
The Family of Dr. H. Louis McCombs '50
Tara McCormick
Sean McElwee
Clyde and Taryl McKee ■
James McKey ●
Bruce and Eleanor McLearn
Jo-Ann and John McMenamin ●
Clemence and Homer Mershon ■
Bonnie and Terry Michael ■
Diane and John Miller ■
Dr. and Mrs. David K. Millward
Dean Moldz
Elaine Montgomery
Rob and Ronnie Montgomery ♦
Faith and Richard Morningstar ■
Jim and Pat Morris ♦

Timothy and Amy Mountz ■
 Patrick and Sheryl Murphy ■
 Mark and Anna Myers ◆
 Sally Narey
 New Garden Monthly Meeting
 Eylar and Carol Newton ●
 Steven and Wendy Nierenberg ■
 Ann and Tom Northrup ◆
 John and Diana Osorio
 John and Maureen Oster
 Ozzie and Jane Oswald ■
 Mrs. George F.B. Owens, Jr. '46 ■
 Marlene Pajot-Pavlak ●
 William W. Parshall II ■
 Peter and Phyllis Patukas ◆
 Celeste Payne ■
 Karyn and Levan Payton ■
 Bonnie and Jim Pearsons
 Elizabeth and David Pellegrino ■
 Elizabeth and Robert Peloso ●
 Elizabeth Pennock ■
 Rosa Ana Perez and Ronald Petit ●
 Jean Perkins ■
 Shawn Perry
 Lauren and Geoffrey Phelps ■
 Susan and Paulding Phelps ■
 Susan and Paulding Phelps
 Fund for the Philadelphia Foundation
 Mary Platt and Earl Ekas ■
 Martin Plutzer ●
 Mike and Ruth Podolin ●
 Michelle Pritchard
 Susan Proctor and Francis Catania ■
 Raymond Quay ■
 Ginger Quinn ●
 Cynthia and Russell Rankin ■
 Rebecca Rankin and Matthew Rankin '99 ●
 Heidi Read ●
 Beth and Gregory Reaves ●
 Mary Ann and Michael Resnik ■
 Carla and Dennis Reustle
 The Edward and Elsa Rhoads Trust
 Jonathan and Julia Rhoads ■
 Joseph Rhoads, Jr. ■
 Nancy Rhoads
 J. Permar and Nancy Richards ◆
 Domingo Rivera ■
 Anita Robbins
 Joseph and Leanna Roberts ●
 Randolph Robinson ●

Veda Rose Robinson
 Anne and Robert Roche ◆
 Priscilla Longstreth Roche ■
 Jeannette Rodgers
 Beth Rodman ●
 Mary Jane Rogan ■
 Janet and Scott Rogers ■
 Jane and John Rose ●
 Gerd and Susan Rosenblatt ●
 Brendan, Rich and Julie Ross
 Brandelyn Roth
 Steffanie Rowland
 Doris and John Rudibaugh ●
 Elizabeth Rupp ●
 Harry Rupp Sr. ■
 Allison Russell ●
 John and Margaret Salvucci ●
 Myron and Ellen Samuel
 Ellen H. Satterthwaite ◆
 Mr. and Mrs. J. G. Scarborough ●
 Richard Scheff and Natalie Ramsey ■
 Susan and John Schick ■
 Peter Schindler
 Megan and Devin Schlickmann ■
 Cathy and Josh Schmidt ◆
 Robert and Sally Schwabe ■
 Shawn and Ronda Sekela ■
 Salley Sharpe-Hernz and William Hernz ■
 Dennis and Elizabeth Shea ●
 Victoria and Andrew Shelter ■
 Mrs. Charles W. Shreiner, Jr. ■
 Liz and Paul Shrock ●
 Kenn Sirinek ■
 Ted and Martha Skiadas ■
 Ray and Cindy Slater ■
 Page and Dariel Smith ■
 Nancy Smith ●
 Susan C. Smith ■
 Susan L. Smith
 Zinta Smith and Bruce Smith * ■
 Bryn Smythe
 Cameron Spalding ■
 John and Leslie Spangler ◆
 Robert H. and Dorothy W. Spencer ●
 Theresa Spina
 Jerold and Judith Starr ■
 Elizabeth D. Strobe ◆
 Rachel Tilney ●
 Valerie Tio ■
 Elisabeth Torg and Mark Taranta ●
 Jo Ann and Joseph Townsend ●
 Ann and Francis Trzuskowski ●
 James Tucker

Del and Sally Tweedie ■
 Joseph and Victoria Tyler ■
 Odette Tyus ●
 U.S. Coast Guard Academy Class of 1958
 Joan Urban ■
 Ellen Urbanski and Doug O'Dwyer ●
 Bonnie and James Van Alen ■
 Kathryn Vanek
 Pete and Phoebe Veerling ●
 Doris and Juan Vela
 Nathan and Andrea Venditta ■
 Bridget and John Visk ■
 Michael Votaw
 Dominique Waldron
 Leroy Waldron
 Michelle Waldron-Reeves
 Gregory Walsh ◆
 Shufeng Wang and Shuang Song ●
 Robert Warakomsky
 Kaitlyn Ward ●
 Jeffrey and Jennifer Waring ■
 Garrick and Debra Weaver ■
 Don and Nancy Weaver ■
 Susan Bartlett Weber ■
 Gene Weisskopf
 Duncan and Kate Welch ■
 Westtown Monthly Meeting
 Leslie White ◆
 Lisa Wickersham ■
 Anthony B. Wicks Jr. and L. Yvonne Alston ■
 Aileen Wieland ●
 Rebecca Wilkinson
 Albert and Isabelle Williams ■
 Doug Williams
 Pamela Williams
 Sherri and Troy Williams ●
 Christopher Wills ●
 Deborah Wills
 Laurence Wilson and Laurie Graham ■
 Anna May Windle ■
 Holly and Robert Winslow
 Frances and James Wood ◆
 Paul and Sandra Woods
 Eva Worrell ●
 Wright-Cook Foundation
 Li Xie and Luan Xue ■
 Lillian Yeh ■
 Kelly and Ansa Yiadom
 Jean Yoder ■
 Erica Young
 Patricia Yulianetti ■
 Bei Zhang and Scott Sheridan ■
 Stephanie L. Ziemke ●
 Anne Zogbaum

1799 SOCIETY

THE CENTRAL CIRCLE

Martha Brown Bryans '68 and Henry S. Bryans
 Tara and Drew Grabel Family
 Ann and Steven Hutton
 Maximillian Yeh '87

THE SOUTH LAWN CIRCLE

Anonymous (2)
 Elizabeth Atterbury
 Helen Hetzel Bair '50
 Edwin and Deborah Boynton
 Dayton Coles '63 and Sheri Coles
 Molly Niles Cornell '60
 Schuyler Elsbree '51 and Nancy Elsbree
 Sanjay and Heather Jain
 Douglas Kerr '54 and Mary Ann Kerr
 Hugh McLean '57 and Kate Niles McLean '57
 Anne and Robert Roche
 Amanda Atterbury Ryan '97 and Kevin Ryan

THE LAKE CIRCLE

Anonymous
 David Barclay '52 and Nancy Barton Barclay '52
 Lynne Ritzenthaler
 Dannenholt '64
 Jonathan Evans '73 and Melissa Graf-Evans
 Julia Steckel Fleischner '91 and David Fleischner
 Doris and John Rudibaugh

THE FARM CIRCLE

Anonymous
 Timothy Barnard and Meredyth Patterson
 Michelle Beer Caughey '71 and George Caughey '71
 Eugenie Copp
 Allan Ells and Allison Moore
 Lucretia Wood Evans '38
 Paul Gilbert and Susan Braithwaite Gilbert
 William Hildreth '81 and Ryan Cooke
 Gary and Eryn Holloway
 Gary M. and Patricia B. Holloway
 David G. Jones '72 and Sallie B. Jones
 Elizabeth Jones
 Yongcong Kou and Xiaofang Liu
 Carter and Jennifer Lee
 Haibin Mao and Hong Cheng

Emily Morningstar '95
 Jim and Pat Morris
 Eylar and Carol Newton
 Virginia Fairchild Pabst '59 and Alan Pabst *
 William Palmer '64 and JoAnn Hotta
 Brenda Perkins '75 and Mark Taylor
 Susan and Paulding Phelps
 Betty Nesbitt Robinson '57
 Daryl Shore '99
 Allan Staats '56 * and Barbara Staats
 Charlotte Triefus and Lloyd Zuckerberg
 Drew and Annie Ulichney
 Patricia Stilwell Walker '65 and W. Danforth Walker
 Kaitlyn Ward
 Kristen and Eric Waterfield
 Don and Nancy Weaver
 Susan Bartlett Weber
 Feifei Xue

THE MEETING HOUSE CIRCLE

Frances and Francis Abbott
 David Andrews '63 and Arlene Andrews
 Anonymous (2)
 Elizabeth Page Carroll '63 and Robert Carroll
 Benjamin Chaffin '94
 Charles Chase '56 and Elizabeth Eckstein Chase
 Barbara Regen Claffie '59 and Gerald Claffie
 Sarah Hedberg Collings '75
 B. Allyn Copp '73 and Mary Wagley Copp
 Betsey Copp '76 and Jozef Konst
 Lucy Copp '74
 Emily Wood Crofoot '73 and Anders Crofoot
 Barbara Drayer '89
 Anne Hoskins Emmet '78 and William Emmet II
 Diana Evans '95 and Marc D'Urbano '95
 Susan Carney Fahey and Robert Fahey
 Amy and Pete Flynn
 James Forsythe '47 and Susan Forsythe
 Tony Fross '85 and Katrin van Dam
 Richard Hastings '81
 John Hirshfeld '61 and Barbara Hirshfeld
 Barry Hogenauer '73 and Mary Sommer '73
 Daniel Hogenauer '59
 Guoyin Huang and Bin Lian
 Xiuying Huang and Jiezi Wang

WESTTOWN FUND / 1799 SOCIETY

Robert Isen '76 and Patricia Isen
 Joyce Webster Johnson '51
 Victoria Jueds
 Mary Wood (Valentine, Keon) Kurtz '42
 Alison Borton Libshitz '58 and Dr. Herman Libshitz
 Elizabeth Hunter Loucks '51 and William Loucks
 Donald McCouch '60 and Rina McCouch
 William McCrory '73 and Deborah Wennberg
 Sergio Modigliani '64 and Suzanne Kohn Modigliani
 Elizabeth Gilbert Osterman '73 and Richard Osterman Jr.
 James Perkins '56
 George Rhoads '57 and Frances Rhoads
 Kevin Roose '05 and Tovah Ackerman
 Parvin Russell '51 and Sally Russell
 Sylvia Savery '70
 Ed Serrill '67 and Barbara Serrill
 Luther Shank '05
 Michael Sicoli '88 and Kirsten Albers
 Nathan Slack '91 and Julie Slack
 Nancy Smith
 Tom Stalnaker '70
 V. Holland Taylor '60
 Danielle Toalton '03 and Leslie Theophile
 Peter Trueblood '73 and Cynthia Evans Trueblood '74
 Jordan Upton '00 and Sandy Rubin Upton
 Bonnie and James Van Alen
 Edward Winslow '64 and Sally Winslow
 Peter Woodrow '65 and Linda Hornig
 Dorothy Woodward Wortmann '63 and Robert L. Wortmann
 Michael Zislis '78 and Pam Strauss

THE NORTH WOODS CIRCLE

Cody Abbott '08 and Liza Abbott
 Francis Abbott '01 and Rachel Abbott
 Maxwell Abbott '05 and Adele Carr Abbott '04
 William Abbott '03 and Katie Ermilio
 Anonymous (6)
 Paul Bailey '63 and Joanne Obrow Bailey '64

Thomas Bailey '68 and Carmenza Gallo
 W. Wilson Baker '58
 Timothy Battin '83
 Anna Evans Beesley '68
 Christopher Benbow '90 and Alejandra Navarro-Benbow
 Elizabeth Locke Besse '45
 Nathan Bohn '83 and Jane Adams Bohn
 M. Christine Boyer '57
 Barbara Braatz '75
 Robert H. Brigham '71
 Beah Burger-Lenehan '02 and Daniel Burger-Lenehan
 Dorothy and Joe Burns
 Sola and Lola Cardoso
 Linda Ames Cassady '64 and Kim Cassady
 Luis Castillo '80 and Wendi Lausch Castillo
 Christopher and Lisa Chapman
 Patricia Chavez
 Katherine Hanrahan
 Christiano '04 and Drew Christiano
 Rachel Clarke '86 and Tim Freeman '87
 Catherine and William Cleary
 Theodore Cleary '00
 Gordon M. Core '67 and Lois E. Core
 Molly Deisroth-Kim '79 and Joseph Kim
 Patricia Bailey Deuber '49 and Robert Deuber
 Carlos Diaz '82
 Ira and Susan Disman
 David DiStefano
 David Dolinger '73 and Anne Marie Whalen
 David Dondero and Katherine Platt
 Jacob Dresden '62 and Patricia Dresden
 Arthur Evans '76
 Bruce Evans '75 and Toni Evans
 David Evans '72
 Arthur S. Garrett '55
 Janet Beer Garrett '75 and John Garrett
 Carol Woods Gehlbach '61 and Stephen Gehlbach
 Douglas and Jean Gessl
 Henry P. Hackett '67
 Carolyn and Jeffrey Hapeman
 Bruce Harrison '81 and Lisa Cromley
 James and Amy Hemphill
 Karen Herrling and Daniel Porterfield
 Paul Hill '73 and Laura Griner Hill '75
 Wilbur Hobbs '63 and Carolyn Ross Hobbs

John Hoffman '82 and Sara Hoffman
 Edwin James '77 and Christine James
 Wenling Jin and Youhui Wang
 Irene Evens Jones '51
 Tom Kaesemeyer '61 and Sally Faulkner
 Kaesemeyer '62
 Richard Karkalits '68 and Mindy Novis
 J. Dudley Kimball '65 and Virginia Kimball
 Scott and Sarah Komarinski
 W. Theodore Kresge '63 and Margaret Kresge
 Celia and Christopher Lang
 Kristine and Jason Lisi
 M. Gwyneth Elkinton Loud '60
 Douglas Lurio '74 and Margaret Lurio
 Louise Baker Malcolm '52
 Marycate and Bill McDonough
 Clyde and Taryl McKee
 Kenneth McLean '82 and Amy Earle McLean
 Claire and Robert McLearn
 Kevin Moore '79 and Mariangela Bravo de Souza Moore
 Ginny Foust Mutti '68 and Larry Mutti
 Anne Steere Nash '52
 Barbara Nicholson '80
 Thomas Niles '56
 Penelope Norrington Orth '59 and Joseph Orth
 Mark Perkins '84 and Donelda Perkins
 Carol Perry Press '61 and Bill Press
 Naresh and Saroj Ramdas
 Christopher Sharples '83
 Zinta Smith and Bruce Smith *
 Sally Stabler '71 and Carl White
 Will Starr '83 and Lise Reno
 Eric Stonestrom '78
 Joseph Strode '73
 Dana Strode-Tritle '71 and Bill Tritle
 Cassandra Costello
 Surrena '94 and Jason Surrena
 Yanfa Tang and Zijing Wang
 Benjamin Testerman '04
 Jo Ann and Joseph Townsend
 Ellen Urbanski and Doug O'Dwyer
 Samuel Wagner '57 and Mary Ann Baker Wagner '58
 Terry Walker '78 and Angela Knoble
 Shufeng Wang and Shuang Song

Christina Hoffman
 Warnick '81 and Harvey Warnick Jr.
 Donald Wildman '79 and Melissa Wildman
 Laurence Wilson and Laurie Graham
 Hsin-Ta Wu '86
 Amanda and Eric Young
 Yugang Zhang and Huixia Wang
 Janet Knoblauch
 Zimmerman '47

1799 SOCIETY

Emily Temple Abels '07 and Kathleen Abels
 Kendra Smedley Adey '01 and Bradley Adey
 Henry Anstine '27
 Margaret (3)
 Stephen Blair '20
 Madelaine Fye Breimhurst '09 and Daniel Breimhurst '09
 Zachary Bull '06
 Henry Burns '28
 Joseph Burns '26
 Wade Chiddick '22
 Emily Connor '08
 Chloe Cook '28
 Dane Alexander Cook '27
 Flor Cruz '06
 William Dietsche '11
 Abigail Domenick '17
 Amelia Eager '23
 Lauren Fedor Friend '07 and Joe Friend
 Elyse Gadra '16
 Frederick Gessl '19
 Karen Gilbert '09
 Hannah Graf Evans '10
 Jeremy Graf Evans '14
 Tengqin Han '17
 Nicholas Hanchak '20
 Maren Hapeman '20
 Anna Harrison '18
 David Harrison '13
 Evalyn Hayman '29
 Eva Herzog '06
 Meredith Hudson '13
 Ian Hutton '08 and Jessica Hutton
 Fiona Kirkpatrick '06
 Amelia Komarinski '26
 Elise Komarinski '23
 Noah Komarinski '28
 Bryce Lander '21
 Tong Luo '13
 Sean McEntee '09
 Keri McGill '18
 Clyde McKee '08
 Benjamin E. McLean '10
 Ethan McLearn '18
 Evelyn McLearn '20
 Quinlan McLearn '26
 Katharine Montgomery '04 and Jon Lennon

Sorah Park '16
 Julia Pavlov '17
 Sammie Pavlov '16
 Colin Perkins-Taylor '16
 Alanna Phillips '12
 Michael Price '30
 Julia Richards '16
 Daniel Scheff '20
 Henry Schlimme '04 and Rebecca Davis Schlimme '04
 Elizabeth Sexton '14
 Nicholas Sokoll '18
 Nelson Sproat '10
 Nicolas Starr '13
 Alexandra Unrath '24
 Nathaniel Urban '14
 Laurens Van Alen '20
 Yunxiao Wang '18
 Jady Williams '21
 Olivia Willis '20
 Alexandra Wilson '09
 Effie Hanghang Zhang '10 and Daniel Jing
 Nelson Zhang '21
 Hannah Zuckerberg '16

Student 1799 Society Donors

Henry Anstine '27
 Henry Burns '28
 Joseph Burns '26
 Wade Chiddick '22
 Chloe Cook '28
 Dane Cook '27
 Amelia Eager '23
 Evalyn Hayman '29
 Amelia Komarinski '26
 Elise Komarinski '23
 Noah Komarinski '28
 Quinlan McLearn '26
 Michael Price '30
 Alexandra Unrath '24



**THANK
YOU**

ENDOWMENT FUNDS

Gifts to endowment funds are investments the school can use for generations to come. Westtown has more than 100 endowed funds, valued at \$129 million (as of June 30, 2021). The following donors kindly made contributions to these endowed funds between July 1, 2020 and June 30, 2021.

CLASS OF 1958 FACULTY ENRICHMENT FUND

Established in 1983 by the Class of 1958 in honor of their 25th Reunion to support faculty professional development and enrichment.
Henry Chen '58 and Linda Chen
Samuel Wagner '57 and Mary Ann Baker Wagner '58

ALLAN W. AND BARBARA STAATS SCHOLARSHIP FUND

Established in 2006 to provide financial assistance to an Upper School boarding student.
Allan Staats '56 * and Barbara Staats

CANDACE A.R. FREEMAN FUND

Established in 1988 in memory of Candace Freeman to support the expansion and enhancement of the creative arts program in Lower School.
Candace Connolly '09
Douglas Freeman
Ann Freeman Keitner '90 and Haydon Keitner

CLASS OF 1984 HAINES SPRUNT TATE AND KENNETH REEVES ENDOWED SCHOLARSHIP FUND

Established in 2014 by the Class of 1984 in honor of their 30th reunion and Haines Sprunt Tate '84 and Kenneth Reeves '84 to support financial aid.
Samantha Boyd Bower '84 and Ernest Bower IV
Patrick Emmet '84 and Ginna Emmet

THE COOPER FUND

Established in 2000 in honor of Meredith and Elizabeth Cooper to support non-recurring capital projects and programs.
Kent Bream '86 and Adele Fava
Kevin Bream '82 and Kimberly Bream

The DANIEL D. TEST JR. FOREIGN SCHOLAR ASSISTANCE FUND

Established in 2005 to assist a foreign student to attend Westtown School.
Said Abu-Rish '54 *

THE DOROTHY "SUNNY" SPIVEY FIELD '45 MERIT SCHOLARSHIP FUND

Established in 2014 in honor of Dorothy "Sunny" Spivey Field '45 to support merit scholarships for an Upper School student who demonstrates intellectual curiosity, commitment to community service, compassion, appreciation for the arts, and participation in athletics or outdoor activities.
James Field
Nancy Field

THE EARL G. HARRISON JR. FUND FOR PROFESSIONAL DEVELOPMENT

Established in 2004 in honor of Earl G. Harrison Jr. '50 to provide professional development opportunities for faculty members.
Bart Harrison '47

THE ENDOWED CHAIR IN FAITH AND PRACTICE HONORING QUAKER MENTORS OF THE WESTTOWN COMMUNITY

Established in 2013 by members of the Class of 1963 to support, preserve, and strengthen the Quaker heritage of Westtown School and help translate contemporary Quaker thought and faith into daily practice.
Anonymous
Terrie Thompson Cornell '63 and Bill Cornell
Jan Mesics French '59
Robert Richie

THE FAITH AND PRACTICE FUND IN MEMORY OF MERVIN T. HUTTON

Established in 2017 in memory of Mervin T. Hutton to support and enhance the Endowed Chair in Faith and Practice Fund, which ensures an ongoing focus on Quakerism in all aspects of school life.
Dayton Coles '63 and Sheri Coles
William Dietz '62 and Nancy Dietz
Laurence Flaccus '63 and Susan Flaccus
Susanna Montgomery Trotter '63

THE FAITH AND PRACTICE FUND IN MEMORY OF THOMAS S. BROWN

Established in 2013 in memory of Thomas S. Brown to support and enhance the Endowed Chair in Faith and Practice Fund, which ensures an ongoing focus on Quakerism in all aspects of school life.
Anonymous
James Cooper '73 and Linda Cooper
HTA Insurance Services
Timothy James '63 and Terri James
Anne Brown Randall '66 and Sherman Randall
Thomas Rie '63
Lester Young '61 and Maria Young

THE FAITH AND PRACTICE FUND IN MEMORY OF CHARLES K. BROWN III

Established in 2015 in memory of Charles K. Brown III to support and enhance the Endowed Chair in Faith and Practice Fund, which ensures an ongoing focus on Quakerism in all aspects of school life.
David Andrews '63 and Arlene Andrews
Anonymous
Wilhelmina Van Liere
Batchelder-Brown '50
Elspeth Hughes Benton '50
Dorothy Dietz Blitz '63 and Allen Blitz
Virginia A. Dulany M.D. '50
Laurence Flaccus '63 and Susan Flaccus
David Hodgins '50
Bruce Reeves '51 and Carlene Reeves
Thomas Rie '63
Juliet Wilson Welch '50 and Matthew Mitchell
Lester Young '61 and Maria Young

THE EUGENE AND MARY OWSLEY HOGENAUER FUND

Established in 1997 by the children of Eugene and Mary Owsley Hogenauer to provide financial assistance for children of current staff members.
Barry Hogenauer '73 and Mary Sommer '73
Daniel Hogenauer '59
Margaret Hogenauer McCormick '61 and Lawrence McCormick
Priscilla Criddle
Thornbury '64

FACULTY COMPENSATION FUND

David Carter '64 and Constance Carter

FUND FOR QUAKERISM

Established in 1986 to support teaching and living the concept and experience of Quakerism.
Thomas H. and Mary W. Shoemaker Fund

GENERAL ENDOWMENT FOR CURRENT OPERATIONS

Leslyn Michels
Goodrich '51 * and Charles Goodrich
The Edward and Elsa Rhoads Trust
David Richie '49 * and Catherine Richie *
Parvin Russell '51 and Sally Russell
Allan Staats '56 * and Barbara Staats
Gregory Votaw '45 *

GENERAL ENDOWMENT FOR FINANCIAL AID

Penny Teaf Goulding '60
Lisa Morein
Maria Gayle Schweizer '65 and Charles Schweizer
Nancy Kriebel Turner '68 and Charles Turner
Susan Folwell Ward '69 and George Ward
Anthony Williams '75 and Shari Williams

GEORGE HARTWELL ADAMS '63 SCHOLARSHIP FUND

Established in 1970 to provide financial assistance to a student who demonstrates character.
William Eaton '65 and Janet Eaton

THE J. KIRK RUSSELL '34 FUND

Established in 2008 in memory of J. Kirk Russell '34 to support financial aid.
Judith Cooley Foster '69 and Robert Foster
William Goulding '61 and Roberta Galati
Michael Lebo '61 and Barbara Lebo

THE JOHN W. BAIRD ENVIRONMENTAL SUSTAINABILITY FUND

Established in 2017 in honor of John W. Baird to support projects related to environmental sustainability.
Luis Castillo '80 and Wendi Lausch Castillo
Amy Hiatt '70 and David Pratt
Penelope Norrington Orth '59 and Joseph Orth
Emily Leach Richie '70

**THE KAESEMEYER
FULL ACCESS FUND**

Established in 1989 in honor of Tom Kaesemeyer '61 to provide grants to Westtown students for school-related expenses not covered by tuition. Anonymous
Carol Palmer Bradley '61
Julie Chapin '86
Susan Jin Davis
Anny Ewing and Larry McCauley
Ellen Cryer Gilbert '76 and Thomas Gilbert '76
Lynn O'Connor Hubbard '72 and Stephen Hubbard
Tom Kaesemeyer '61 and Sally Faulkner Kaesemeyer '62
Kristine and Jason Lisi
Claire and Robert McLearn
Bradley and Elizabeth Quin
Roy Zuckerberg Family Foundation
Emilie Dawes Steele '62
Thomas H. and Mary W. Shoemaker Fund
Charlotte Triefus and Lloyd Zuckerberg
Lester Young '61 and Maria Young

**THE LONGSTRETH-
ROCHE FUND FOR
QUAKER EDUCATION**

Established in 2021 to promote and support Quaker education at Westtown School.
Anne and Robert Roche

**THE LUCRETIA
WOOD EVANS '38
SCHOLARSHIP FUND**

Established in 2007 in honor of Lucretia Wood Evans '38 to provide financial aid to Upper School boarding students.
The WELWE Foundation

**THE MARJORIE
BARNARD
FACULTY FUND**

Established in 2009 in honor of Marjorie Barnard to award one or more full-time faculty members a stipend to be used for something fun.
Brennan Barnard '92

**THE McLEAR
ARTIST-IN-RESIDENCE
FUND**

Established in 2019 to support an annual artist-in-residence program in the Upper School.
Claire and Robert McLearn

**PETER O. LANE '57
ALUMNI SCHOLARSHIP
FUND**

Established in 2005 by the Class of 1957 in honor of their 50th Reunion and Peter O. Lane '57 to provide financial aid for children and grandchildren of alumni/ae/x.
Arthur Criddle '57 * and Linda Smith-Criddle
Peter Lane '57 and Juliet Backlund Lane
Hugh McLean '57 and Kate Niles McLean '57
Henry Schlimme '04 and Rebecca Davis Schlimme '04
Samuel Wagner '57 and Mary Ann Baker Wagner '58

**THE QUAKER STUDENT
SCHOLARSHIP FUND**

Established in 2016 to provide tuition assistance for Quaker children who are active members of their Friends Meetings.
Laurence Thomas
Sherwood '39 *

**SALLY PENELL-BARTON
SCHOLARSHIP FUND**

Established in 1999 to provide financial assistance to Quaker students.
Kaler Wills Howard '57 and Roscoe Howard III

**STAATS
WESTTOWN FUND**

Allan Staats '56 * and Barbara Staats

**TERRY WALKER '78
AND ANGELA KNOBLE
SCHOLARSHIP FUND**

Established in 2017 to support scholarships for Upper School boarding students.
Terry Walker '78 and Angela Knoble

**THE van ARKEL
SCHOLARSHIP FUND**

Established in 1995, to support Westtown's financial aid program, which provides assistance to students who have not yet achieved their academic potential or developed their social skills and would otherwise not be able to attend the school.
Leonard and Mary Ann Cadwallader and Family

THE WINSLOW FUND

Established in honor of Edward C. Winslow Jr. '35 to support faculty professional development.
William Winslow '73 and Terese Winslow

SPECIAL PROJECTS

The following donors made a restricted gift to a special project or initiative between July 1, 2020 and June 30, 2021.

ARCHIVES

Dana Dunbar King

**ATHLETICS DIRECTOR'S
PRIORITY FUND**

Frances and Francis Abbott
Anonymous
Charles Evans '70

**CENTER FOR THE LIVING
ARTS RENEWAL**

Anonymous (2)
Martha Levering
Hawkinson '53 and John Hawkinson
Daniel Miller '11
Elizabeth Miller *
Francis Miller '09
Allan Staats '56 * and Barbara Staats

**CLASS OF 1967
OUTDOOR EDUCATION
PROJECT**

David Pomeroy '67
Carol Savery-Frederick '67 and William Frederick

**DINING ROOM/STUDENT
CENTER RENOVATIONS**

Anonymous
James Perkins '56

**FULL ACCESS FOR
OPERATIONS**

Susan Jin Davis

**JACKSON DENTON III '10
MEMORIAL FUND**

Anne and Robert Roche

**KATHARINE
BRIGHAM '68
MEMORIAL FUND**

Estate of Katharine Brigham '68 *

**LEARNING RESOURCE
CENTER**

Michaela Silber '08
Norman and Nancy Silber

**MISCELLANEOUS
RESTRICTED GIFTS**

D. Marian Franck *
Elizabeth Green *
Thomas and Karen Ann Russo
Dr. Harold Weaver '52
Robert Wilson '61 and Janet Wilson

**NELSON AND
SALLY WEAVER
SERVICE AWARD**

Barbara and Larry Wheeler
Connie Wheeler and Steven Wheeler
Doug and Lynn Wheeler
Glen and Susan Wheeler

ROBOTICS CLUB

Yunxiao Wang '18
Lester Young '61 and Maria Young

**SENIOR CLASS OF 2021
FUND**

John Atwood and Audrey Puzzo
Leslie and Steve Barr
Becky and Mitch Bernstein
Io Betley
Jennifer Shull Boland '84 and John Boland
Bradley and Maritsa Boucher
Katee Boyle-Mojica
Stephen and Amy Brotschul
Beah Burger-Lenehan '02 and Daniel Burger-Lenehan
Alicia and James Chin
Sondra Dilks Avelar
Jessica Eldredge
Clare Gamble '09
Paul Goldbecker and Kim Stack
Barbara Grigsby
Deion Hammond '21

Neil Herlocher '82 and Sharon Herlocher
Karen Herrling and Daniel Porterfield
Sinead Horan
Calvin and Nancy Idler
Gretchen Larsen
Emily Lightfoot and Gary Parkanzky
Kristine and Jason Lisi
Rosanne and Thomas Lisi
Kristen Makatche
Karen and R. Michael McClellan
Marycate and Bill McDonough
Robin and Terrance McKeon
Juli Miller-Robinson and Wendell Robinson
Steven Mitchell and Noelle Callahan
Roy and Tracey Moore
Diane Parrotti
Sherman Roberts
Veda Rose Robinson
Jennifer Shea-Schwacke
Erika Davies Swarthout '98 and Paul Swarthout
Charlotte Triefus and Lloyd Zuckerberg
Douglas and Elizabeth Turner
Kirsten Van Vlandren
Dominique Waldron
Nicole Whitaker
Rebecca Wilkinson
Megan E. Zawawski
Hui Zhang

STAATS HOUSE

Allan Staats '56 * and Barbara Staats

**UNRESTRICTED
DONATIONS FOR
CAPITAL PROJECTS**

Laurie Wolfe Murray '46 *

THE K.O.B. SOCIETY

The K.O.B. Society recognizes donors who include Westtown School in their estate plans such as a will, beneficiary of a retirement plan or life insurance policy, or a trust.

Frances and Francis Abbott
 Donna Alexander '76
 Carolyn Alsup '68
 Nancy Trotter Anderson '56
 and James Anderson *
 Anonymous (12)
 Scarlett Allen Arth '46 *
 Shelia Ashley '60
 Judith Nicholson
 Asselin '71 and Denis
 Nicholson Asselin
 Nichola Bailey '47
 John and Aminda Baird
 David Barclay '52 and Nancy
 Barton Barclay '52
 Hanno Beck '78 and
 Valerie Diamond
 Asia Alderson Bennett '51
 and Lee Bennett Jr.
 Sally Billings '57
 Ronald Bodkin '53 and
 Brenda Freeman Hayward
 Nathan Bohn '83 and
 Jane Adams Bohn
 Joshua Bond '86
 Hugh Bonner '57 and Bertha
 McKinney Bonner '60
 Barbara Braatz '75
 Nancy Palmer Brose
 Henry S. and Martha Brown
 Bryans '68
 Sylvie Alpert Bryant '57 and
 H. Stafford Bryant
 Richard Burns '68 and
 Babette Burns
 Darlene Buterbaugh-Hogg
 and James Hogg
 Georgia Carrington
 Deborah Bacon Cassady '57
 and J. Robert Cassady
 Linda Ames Cassady '64
 and Kim Cassady
 J. Kirk and Maureen
 Chandler
 Meredith Channel '66
 and Terry Rathbun
 Jennifer Lohrke
 Christensen '73 and
 Paul Christensen
 Louise Christopher
 Ruth Cox Church '69 and
 Terry Church
 Barbara Regen Claffie '59
 and Gerald Claffie

David Clapp '67 and
 Gayle Barsamian
 David Clement '62 and
 Sara Clement
 Cathryn Coate '72
 Kyle Colburn '14
 Barbara Acres Collins '50
 Charles Coltman '60
 Benita Warder Cooper '61
 Walter Coppock '46 and
 Ruth Coppock
 Molly Niles Cornell '60
 Gwendolyn Coronway '58
 Thomas Cosinuke '73 and
 Anne Kelton
 Arthur Criddle '57 * and
 Linda Smith-Criddle
 Linda Fairchild Cushman '67
 Lynne Ritzenthaler
 Dannenhold '64
 Sarah Davies '82 and
 Mark Zec
 Patricia Bailey Deuber '49
 and Robert Deuber
 Karen Diaz
 Cornell Dowlin '45 *
 Barbara Du Bois '58
 Charles Dulany '52 *
 and Pauline Dulany
 Mary Collins Eby '56
 and James Eby
 Ann Tomlinson
 Edmondson '51
 Thomas Elkinton '59 and
 Eleanor Elkinton
 Jane Elliot '63
 Teresa Jacob Engeman '53
 David Evans '72
 Lucretia Wood Evans '38
 Wilbur Evans '51 and
 L. Carol Evans
 Earl Evens '54 and
 Sandra Evens
 Frances Field
 Sandra Fisher Bocard
 D. Marian Franck *
 Tony Fross '85 and
 Katrin van Dam
 Marian Darnell Fuson '38
 Carol Woods Gehlbach '61
 and Stephen Gehlbach
 Ellen Cryer Gilbert '76 and
 Thomas Gilbert '76
 Roger and Elizabeth Gilmore
 Bruce Goerlich '76
 Peter Goodwin '54 and
 Janice Goodwin
 Jean Orne Gosling '67
 Katharine Green '76 and
 Philip Helzer
 Marianne Griffith '61
 Jonathan I. Griggs '53
 Christopher Hall '64
 John Hammond
 Barbara Hampton
 Nancy Hankin '69
 Bart Harrison '47

Jean Harrison
 Dorothy MacFarland
 Haviland '42
 Martha Levering
 Hawkinson '53 and
 John Hawkinson
 Davis Henderson '62
 David Hodgkin '50
 Barry Hogenauer '73 and
 Mary Sommer '73
 Daniel Hogenauer '59
 Charles Holaday '49
 Lawrence Holden '63 *
 Thomas Hoskins '62 and
 Julia Forsythe
 Philip How '52
 Glen Hudson '56
 A. Dalton James '46 and
 Kathryn Williams James
 Margaret Jaquette
 David G. Jones '72 and
 Sallie B. Jones
 Victoria Jueds
 Yoshie Kamei
 Charles and Joyce Ketcham
 Ernest and Gabrielle Kimmel
 Arthur Kincaid '59
 Gerry Kirkpatrick
 Lucille Oliver Koenig '44
 Nancy Kressler
 Mary Wood Kurtz '42
 Marjorie Hibbard Lauer '59
 Linda and Bill Lee
 Walter Lenk '65
 Alison Borton Libshitz '58
 and Dr. Herman Libshitz
 Rosanne and Thomas Lisi
 James H. Littrell '61 and
 Louis M. Skypala
 Ellen Sharpless Loller '42
 Alice Bacon Long '42
 Elizabeth Hunter Loucks '51
 and William Loucks
 Patricia Weightman
 Macpherson '69
 Anna Willits Mann '62 and
 David Mann
 Kip Martin '86 and
 Renee Rockwood
 William Matchett '41 *
 and Judith Matchett
 James Matlack '56 and
 Jean Yaukey Matlack '56
 Lou Matlack '53 and Betsy
 Matlack
 Ruth Harvey
 Mavronikolas '49
 Judith McCoyd
 John McKinstry '77 and
 Nancy Crickman
 Robert McKinstry
 Hugh McLean '57 and
 Kate Niles McLean '57
 E. Jerome Michener '53 and
 Patricia Lee Michener '59
 Deborah Brown Miles '65
 and Graham Miles '65

Francis Miller *
 Sergio Modigliani '64 and
 Suzanne Kohn Modigliani
 Margaret Lindley Moncy '63
 and Charles Moncy
 Emily Morningstar '95
 Ilse Helfferich Munzinger '45
 Laurie Wolfe Murray '46 *
 Mary S. Myers
 Robert Nevitt '49 and
 Audrey Nevitt
 Jean Michener
 Nicholson '44
 Pat Nicholson '67
 Ann and Tom Northrup
 Penelope Norrington
 Orth '59 and Joseph Orth
 Mrs. George F.B.
 Owens, Jr. '46
 Virginia Fairchild Pabst '59
 and Alan Pabst *
 William Palmer '64 and
 JoAnn Hotta
 P. Neal Pedersen '69 and
 Dottie Rae Pedersen
 Diane Penfield
 Donald G. Pennell '62
 Kenneth Pennell '56
 and Mary Jane Schooley
 Pennell
 James Perkins '56
 Jean Perkins
 David Pomeroy '67
 Carol Perry Press '61 and
 Bill Press
 Anne Raymond
 Susan Reese
 Keith Reeves '84
 Nancy Rodman Reiser '58
 Philip Richardson '53 and
 Barbara Cerri Richardson
 Tacy Paul Roby '82 and
 Scott Roby
 Priscilla Longstreth Roche
 E. Jackson Roeske '72
 and Tomi Roeske
 Susan Windle Rogers '56
 Anthony Ross '87
 Parvin Russell '51 and
 Sally Russell
 Thomas Russell '62
 Carol Savery-Frederick '67
 and William Frederick
 Meghan and William Sayer
 Robert Schaffner '64 and
 Cynthia Schaffner
 Thomas Schindler '78
 Seth Shortlidge '91
 Michael Sicoli '88 and
 Kirsten Albers
 Ray Slater
 Nancy Smith
 Cornelia Scheffey
 St. John '58 and
 Steven Edmunds
 Barbara Grimes Staats
 and Allan Staats '56 *

Tom Stalnaker '70
 J. Ross Stevenson '49 and
 Nancy Hanson Stevenson
 Barbara James
 Stonestrom '43
 John Stratton '65 and
 Linda Bonar
 Elizabeth Strode
 Sarah Grison Sullivan '89
 and John Sullivan
 Miriam Oliver Swartz '54
 J. John Taber '72 and
 Kathy Taber
 Jennifer and John Taggart
 V. Holland Taylor '60
 Martha Bush Thomas '41
 Leslie Trich '69
 Samuel Trueblood '56 and
 Mary Ellen Trueblood
 Gregory Votaw '45 *
 John Waldhausen '76
 Patricia Stilwell Walker '65
 and W. Danforth Walker
 Mary Jane Harnwell
 Wallace '47
 Christina Hoffman
 Warnick '81 and Harvey
 Warnick Jr.
 Susan Weber
 Barbara Webster '68 and
 Skip Tannen
 Thomas Wetherald '44 *
 and Kathleen Wetherald
 Gretel Klempere White '58
 Lucia Whittelsey '69
 Louisa Willcox
 Alexandra Wilson '53 and
 Willem Jansen
 Jean M. Wilson
 Edward Winslow '64 and
 Sally Winslow
 Josephine Withers '56
 Louisa Wittmann Post
 Jean Dithridge Wohlsen '33
 John A. Yeatman '51



TRIBUTE GIFTS

TRIBUTE GIFTS

The following gifts were made in honor or in memory of a member of the Westtown community.

In Honor of Maria Alonso
Elisabeth Torg and Mark Taranta

In Honor of Charlotte '25 and Henry '27 Anstine
Anonymous

In Honor of John Baird
Luis Castillo '80 and Wendi Lausch Castillo

In Honor of Emerson Beard '33
Nicholas and Taylor Beard Scott and Patricia Bowes

In Honor of Alexa Bird '24
Elaine Montgomery Steffanie Rowland

In Honor of Robert Bishop '74
David and Lisa Eldridge

In Honor of Taylor Reustle Brewster '10
Carla and Dennis Reustle

In Honor of Alana '20 and Zachary '20 Burgess
Robert Burgess and Elizabeth Morrison

In Honor of Joey '26 and Henry '28 Burns
Dorothy and Joe Burns Martin Plutzer

In Honor of Felix Cardoso '24
Sola and Lola Cardoso

In Honor of Curtis Carroll '79
T. Randolph Grange '77 and Leslie Lamarre

In Honor of Wade Chiddick '22
Andre Allen David Alten

In Honor of Mark Coyle '96 and Becky Coyle Mueller
Dick and Martha Coyle

In Honor of Elizabeth Eldredge '21
Charles and Jane Eldredge

In Honor of Julius Enarsson Enestrom '20
Per and Anna Karin Enarsson

In Honor of Kevin Eppler
Roy and Tracey Moore

In Honor of Jay Farrow '75
Kristine and Jason Lisi Caroline and Timothy Loose

In Honor of Karen Gallagher
Donna Erwin Sinead Horan

In Honor of Spencer Gilbert '21
Paul Gilbert and Susan Braithwaite Gilbert

In Honor of Oliver Hart '24
Andrew Hart and Christine Venturis

In Honor of India '17 and Lena '20 Henderson
Andrew and Marion Henderson

In Honor of Christine Henwood-Costa
Elisabeth Torg and Mark Taranta

In Honor of Logan '22 and Maya '24 Jain
Sally Lind

In Honor of Tori Jueds
Tara and Drew Grabel Family R. Melvin Keiser '56 and Elizabeth Keiser

In Honor of Erin Kennedy Salvucci
John and Margaret Salvucci

In Honor of Peter Lane '57
Margaret Greene '80 and Brian Greenberg

In Honor of Molly Lang '08
Celia and Christopher Lang

In Honor of Paul Lehmann '99
Roy and Tracey Moore

In Honor of Ethan '18, Evelyn '20 and Quinlan '26 McLearn
Bruce and Eleanor McLearn

In Honor of Miles '30 and Liam '31 Mears
Benjamin and Joy Mears

In Honor of Mia Melendez-Ruiz '21
Mónica Ruiz

In Honor of Miles Mitchell '23
Edward Callahan

In Honor of Lauren Monahan '21
William and Maureen Monahan

In Honor of Jacob '29 and Claire '31 Muller
Karen Lorenz and John Muller

In Honor of Elizabeth Gilbert Osterman '73
Ellen Cryer Gilbert '76 and Thomas Gilbert '76

In Honor of Maxwell Penders '21
John and Kay Coldiron

In Honor of James Perkins '56
Ellen Cryer Gilbert '76 and Thomas Gilbert '76

In Honor of Anne Roche
Priscilla Longstreth Roche

In Honor of Lunabella Roman '22
Stephany Mejia

In Honor of Ernie Schoch
William Demps '87

In Honor of Elizabeth Sexton '14
Anonymous

In Honor of Carol Jeanne Smith '61
Laura Russell Worth '61 and William Worth III

In Honor of Steele '25 and Fenner '27 Songle
Ellen Songle

In Honor of Timothy Sterrett '60
Margaret Greene '80 and Brian Greenberg

In Honor of Devin Swarthout '24
Erika Davies Swarthout '98 and Paul Swarthout

In Honor of Courtney Tyus
Becky and Mitch Bernstein Megan and Devin Schlickmann

In Honor of Alexandra Unrath '24
Anonymous

In Honor of Ellen Urbanski
Janet Favero

In Honor of Karl Vela '03
Sara Blachman '02 Doris and Juan Vela

In Honor of Dominique Waldron
Michelle Pritchard Michelle Waldron-Reeves

In Honor of Allan Wang '20
Shufeng Wang and Shuang Song

In Honor of Archer '28 and Nixon '30 Webb
Pamela Purser and Matthew Webb

In Honor of Vaia '28 and Nora '32 Weede
Maria and Shawn Weede

In Honor of James White '69
Kathryn Vanek

In Honor of Rose Wilhelmi '12
Gene Weisskopf

In Honor of Jady Williams '21
Michelle Lewis Nicole Whitaker

In Honor of Robert Winslow '97
Holly and Robert Winslow

In Honor of Yiming Wu '24
Mingang Wu and Jing Zhang

In Honor of Alyssa Young '11
Erica Young

In Honor of Tso-an Yu '75
Henry Wolf '75

In Honor of Wenxuan Zhao '24
Ming and Lin Zhao

In Memory of Grace Bacon 1910
Mary Lennox '62

In Memory of Ronald Birkenfeld '50
Appleton Partners Pamela Birkenfeld Jean Grim Walwyn and Betsey Hughes Sally Narey Payden & Rugel Bonnie and Jim Pearson's Bruce Reeves '51 and Carlene Reeves The Family of Dr. H. Louis McCombs '50

In Memory of Carolyn Cooper Bream '59
Kent Bream '86 and Adele Fava Kevin Bream '82 and Kimberly Bream

In Memory of Madeleine Brown '75
Gene Weisskopf

In Memory of Thomas Brown 1929 and Anna Bennett Brown 1932
Catherine Hoffman Wickens '84 and Justin Wickens

In Memory of Susan Koenig Cannon '77
Pamela Mueller '77

In Memory of Dwight and Elizabeth Cooley
Judith Cooley Foster '69 and Robert Foster

In Memory of Arthur Criddle '57
Samuel Wagner '57 and Mary Ann Baker Wagner '58

In Memory of George Crispin '57
Samuel Wagner '57 and Mary Ann Baker Wagner '58

In Memory of David Cronister '73

Virginia Whipple Cronister
Vaughan '48

In Memory of Anne Ferguson Cryer '42

Margaret Cryer Foody '79
and Thomas Foody

In Memory of Jackson Denton '10

Kathryn Ionata

In Memory of Elizabeth Trueblood Derr '59

Jan Mesics French '59

In Memory of Thomas Dew '46

Marilyn Dew Maisano-
Savage '50 and James
Savage III

In Memory of Hugh Downing '49

Mabel Downing

In Memory of Charles Dulany '52

Anne Moore Batley '52

In Memory of Dorothy Spivey Field '45

Nancy Field

In Memory of Louis Flaccus 1930 and Ruth Shoemaker Flaccus 1933

Anonymous
Laurence Flaccus '63 and
Susan Flaccus

In Memory of Candace Freeman

Ann Freeman Keitner '90
and Haydon Keitner

In Memory of George Glenn '45

Mrs. George S. Glenn

In Memory of Ann Parry Gosling '43

C. Ann Gosling Winder '70
and Miles Winder III

In Memory of Philip Haines '63

Susan Haines

In Memory of Margaret Ewing Hoag 1920

Meg Blanchet '73

In Memory of Patrick Hubbard

Jeremy Graf Evans '14

In Memory of Lewis Wickersham Kalsbeek '45

Theodore Kalsbeek

In Memory of David Kendall '48

Nancy Smith

In Memory of Merrick Ketcham '74

Faith Salvo '74 and Stephen
Schlissel

In Memory of Alexander Krutsky '68

Jessie Cocks '68
Maggie McNally

In Memory of Marion Cook Ladd 1934

Bonnie Ladd Hamilton '63
and Frederick Hamilton

In Memory of Richard Lane 1924

Elizabeth Lane Morrison '58
and Vaughn Morrison

In Memory of Rachel Letchworth

Patricia Livingston
Herban '60

In Memory of M. Joyce Lower '53

Joanna Brown

In Memory of Alfred Lowry 1935

Mary Lennox '62

In Memory of Pamela Rea Machermer '64

David and Lisa Eldridge

In Memory of Donald Macpherson '68

Mayland Crosson

In Memory of Francis and Georgiabelle Maida

Whitney Hoffman Suttell '98
and Brit Suttell

In Memory of David Mallery

Diane Mallery

In Memory of Robert Marshall '42

Joy Marshall

In Memory of Caroline Smith McNamara '61

Elizabeth Walter Kirk '61 and
Thomas Kirk Jr.

In Memory of Anna Winslow Newbold '39

William Winslow '73 and
Terese Winslow

In Memory of Jonathan Orne '63

Laurence Flaccus '63 and
Susan Flaccus
Anonymous

In Memory of Susan Horsfield Oster '56

Laura Hutton
John and Maureen Oster

In Memory of George Owens '46

Mrs. George F.B.
Owens, Jr. '46

In Memory of Gail Dresden Parker '55

Elliot and Suzanne Axel
Alice Goldberg Braun
Muneer Ismail and
Neda Barghouthi
Alfred Parker
Myron and Ellen Samuel
U.S. Coast Guard Academy
Class of 1958
Robert Warakomsky

In Memory of John Perera '52

Carol Perera Weingeist '59

In Memory of Harry Poteat '79

Jay Batley '79

In Memory of Helen Wright Prince 1929

Barry Prince '69 and Ann
Prince

In Memory of David Richie '49 and Catherine Richie

Robert Richie

In Memory of Bruce Smith

Jonathan Evans '73 and
Melissa Graf-Evans
Samuel Wagner '57
and Mary Ann Baker
Wagner '58

In Memory of Frederick Swan '57

Samuel Wagner '57
and Mary Ann Baker
Wagner '58

In Memory of Arnold Trueblood '48

Hijikata Family Foundation

In Memory of D. Martin Trueblood '43

Rose Takano Hijikata '43
Hijikata Family Foundation
Peter Trueblood '73
and Cynthia Evans
Trueblood '74

In Memory of Gregory Votaw '45

Michael Votaw

In Memory of Alice Walker 1906 and James Walker 1908

Robert Lippincott '70 and
Jenifer Lippincott

In Memory of John Walmsley '66

Paige Russell '66

In Memory of Penelope Wilson

Suzanne Wilson '64



GIFT IN KIND DONATIONS

The following donors made a gift in kind to Westtown School between July 1, 2020 and June 30, 2021.

Anonymous

Elizabeth Clement Bauer '69 and Martin Bauer '69
Charles Chase '56 and Elizabeth Eckstein Chase
Marion van Arkel Dear '83 and Marc Dear
Carol Shriner Denick '72 and Thomas Denick
Lucinda Edgerton
Thomas Edmunds
Laurie Green
Barbara and Chris Guest
Victoria Jueds
Bob and Sue Lundquist
Enid Irwin Madaras '80 and Laszlo Madaras
John and Kelly Martini
Kellie Romany
Lily and Richard Siegel
Elizabeth Taylor
Lucia Whittelsey '69

EITC

EDUCATIONAL IMPROVEMENT TAX CREDIT

The following donors supported financial aid at Westtown School by making a gift through the Educational Improvement Tax Credit (EITC) program of the Commonwealth of Pennsylvania.

Anonymous (2)

Phil Barnett and Colleen Philbin
David Berman '02 and Lacy Sommer
Brenper P.C.
Bryn Mawr Trust Company
Luis Castillo '80 and Wendi Lausch Castillo
Christopher and Lisa Chapman
Raheem and Sarah Connelly
Jonathan Evans '73 and Melissa Graf-Evans
Lucretia Wood Evans '38
Friends Council on Education
Jaime Cesar Giraldo Arango and Maria Consuelo Lozano Celis
Carolyn and Jeffrey Hapeman
Gary and Eryn Holloway
Ann and Steven Hutton
IMC Construction
Deron Jester '92 and Jennifer Goodrich Jester
Pamela and Peter Nagy
Margaret Peloso Martin '01 and Thomas Martin
PetRad LLC
Austin and Susanne Repetto
George Rhoads '57 and Frances Rhoads
John and Silenia Rhoads
Robert J. Kratz & Company
Carey and Gregory Schuster
Waste Management
Melissa and Lane Wiggers

MATCHING GIFTS

The following organizations made a matching gift to Westtown School last fiscal year.

Abbie Employee

Engagement Fund
AmazonSmile Foundation
Apple, Inc
Bank of America Charitable Foundation
Bristol-Myers Squibb
Exelon Foundation
Guidehouse
Hartford Fire Insurance Company
Health Union, LLC
IBM Corp.
Microsoft Matching Gift Program
New York Life Foundation
Novartis US Foundation
Payden & Rugel
Pew Charitable Trusts
QVC Matching Gifts
Salesforce.org
Service Now
The William Penn Foundation
UnitedHealth Group
Vanguard Matching Gift Program





Eryn and Gary Holloway turned their Pennsylvania tax dollars into scholarships for Westtown students!

Through Westtown School's membership in the Friends Collaborative, friends of Westtown have the opportunity to be a part of the Educational Improvement Tax Credit (EITC) Program and receive tax credits for supporting need-based scholarships for Westtown students.

Individuals and businesses in Pennsylvania can participate in the Friends Collaborative by making a minimum contribution of \$3,000 per year for two consecutive years to support tuition assistance at Westtown School and other Pennsylvania Friends schools. In turn, participants receive a PA state tax credit for up to 90% of their contribution amount.

Current parents Gary and Eryn Holloway did just that. Gary says, "My wife and I were so happy to find a way to participate in the EITC program. The Friends Collaborative gave us this ability to designate our funds to Westtown School, and we were able to receive a 90% tax credit on our PA income tax. This program is truly a win for everyone!"

Last year, Westtown received over \$400,000 in gifts through the EITC program for scholarships supporting our community. Many thanks to the Holloways and all the other EITC donors for making a Westtown education more affordable for our families!

VOLUNTEER LEADERS

VOLUNTEER LEADERS

Hundreds of volunteers help Westtown every year. From assisting in classrooms to organizing events and fundraising for the Westtown Fund, our community of volunteers is active in many different and impactful ways. We are grateful to all volunteers for their tremendous gifts of time and talent.

Alumni Association Board of Managers

Karabi Bhattacharyya
Acharya '82
Robert Batley '81
Wendi Grantham '85
Timothy James '63
Rachna Kota '15
Jennifer Mackey '91
Francis Miller '09
Edward Moon '73
Kevin Moore '79
Harve Nichols '84
Alia Williams Ridley '04
Thomas Rie '63
Dina Patukas Schmidt '84
Anne Smith '84
Frederick Spackman '77

Class Connectors

Judith Nicholson Asselin '71
Jennifer Atkinson '85
Averil Smith Barone '86
Kristen Boe Batley '81
Robert Batley '81
Ellen Bennett Becker '62
John Beideman '51
Nancy Swan Bernhardt '55
Andrew Biemiller '58
Richard Bravo '93
Elizabeth Brown '14
Elizabeth Husson
Caumont '06
Nicholas Char '08
Kathryn Cloutman '94
Meredith Connor '11
Mary Niles Cornell '60
Robert Cosinuke '79
Philip Cottone '14
Christopher Cryer '75
Daquan Daly '12
Lindy Disman '14
Mary Collins Eby '56
Miriam Elliott '89
Sarah Evans Elzinga '03
Ruth Rhoads Engler '58
Nerina Burton Fleegle '02
Helen Strong Foreman '61
Lauren Fedor Friend '07
Steffanie Garzon '15

Hali Giessler '45
Ellen Cryer Gilbert '76
Karen Gilbert '09
Bruce Harrison '81
Dagny Karkalits Henry '64
Patricia Livingston
Herban '60
Cynthia Otto Hillsley '55
David Hodgkin '50
Chan Min Hong '11
Sheran Honneyman '83
Jonathan Hovey '92
Willard Hurd '85
Lauren Johnson James '92
Timothy James '63
Samantha Jordan '01
Catherine Manning Kane '69
Kristen Kirk '97
Rachna Kota '15
Peter Lane '57
Debra Lenik '06
James H. Littrell '61
Anna Cottone Lloyd '07
Amy Lytle '91
Alexandra MacColl
Garfinkel '08
Patricia Weightman
Macpherson '69
Lily Magliente '16
Kip Martin '86
Alexis Ferrier McIntosh '01
Madison McKee '10
Margot McKee '56
Robert McKinstry '71
Anthony Michel '62
Francis Miller '09
Judith Graham Miller '55
Kevin Moore '79
Alexander Mull-Dreyer '14
Martha Mullin '66
Helen Longstreth Murphy '66
Barbara Nicholson '80
Tucker O'Donnell '03
Penelope Norrington Orth '59
Caroline Balderston Parry '62
Sharon Taft Quarles '66
Alia Williams Ridley '04
Robert Roche '08
Katrina Rogachevsky '03
Amanda Atterbury Ryan '97
Evan Sanders '16
Carol Savery-Frederick '67
Margery Burson Schafer '76
Henry Schlimme '04
Rebecca Davis Schlimme '04
JohnMichael Sedor '11
Kathryn Shinoda '05
Frederick Spackman '77
Emilie Dawes Steele '62
Laurel Brill Swan '66
Benjamin Testerman '04
Nancy Kriebel Turner '68
Meredith Van Horn '99
Karl Vela '03
Justin Vogel '13
Mary Ann Baker Wagner '58
Yunxiao Wang '18

Elizabeth Baker Wenny '55
Patricia Williams '86
Shelagh Wilson '85
James Winslow '96
Josephine Withers '56
Laura Russell Worth '61
Rachel Wortmann '13
Rebecca Wortmann '16
Ari Yamaguchi '12
Richard Young '82
Hannah Zuckerberg '16

Parents' Councils Clerks

Gina Colley-Holgate P '24/'26
Laura Dolan P '21/'24
Natasha Henry-Tookes
P '24/'27
Arshpreet Sandhu
P '31/'33/'35
Chrissy Westerman P '30/'33
Monica Wiggins P '22

Westtown Fund Fundraisers

Martha Brown Bryans '68
Dayton Coles '63
Molly Niles Cornell '60
Christopher Cryer '75
Ann Hutton P '08
Sanjay Jain P '22, P '24
Kate Niles McLean '57







WESTTOWN SCHOOL

975 Westtown Road, West Chester, PA 19382-5700

