

wfyi



INDIANAPOLIS



MISSION

AS A TRUSTED CATALYST
FOR LIFELONG LEARNING,
WFYI PUBLIC MEDIA ENGAGES AND ENRICHES
OUR COMMUNITY THROUGH DISTINCTIVE
PROGRAMS AND SERVICES.

VISION

WFYI PUBLIC MEDIA
IS A CENTER OF DISCOVERY
FOR ALL AGES. THROUGH UNIQUE PROGRAMS,
SERVICES AND EMERGING
TECHNOLOGIES, WE WILL BE A LEADING
COMMUNITY RESOURCE, EMPOWERING PEOPLE
TO DISCOVER THEIR WORLD, BROADEN
THEIR HORIZONS AND BECOME ACTIVE
PARTICIPANTS IN SHAPING THE FUTURE.
THROUGH THESE EFFORTS,
WFYI BUILDS COMMUNITIES
AND STRENGTHENS FAMILIES
IN CENTRAL INDIANA.

TABLE OF CONTENTS

MESSAGE FROM THE PRESIDENT
AND THE BOARD CHAIR 1

WFYI PUBLIC TELEVISION 2

WFYI PUBLIC RADIO 3

LEARNING SERVICES/OUTREACH & ONLINE SERVICES 4

IRIS & VOLUNTEERS 5

COMMUNITY EVENTS 6

THE YEAR IN BRIEF 7

LEADERSHIP GIVING 10

CORPORATE SPONSORS/GRANTS 18

FINANCIAL REVIEW 19

.....

“PUBLIC TV AND RADIO ARE CRITICAL
TO KEEPING THE PUBLIC INFORMED AND
INVOLVED IN THE NATIONAL DIALOGUE.
WE CAN ALWAYS DEPEND UPON BOTH
ENTITIES TO PRESENT US WITH THE
UNBIASED FACTS WITH WHICH WE CAN
MAKE OUR OWN DECISIONS.”

– Jeffrey, a member in Noblesville



MESSAGE FROM THE PRESIDENT AND THE CHAIRMAN OF THE BOARD



WFYI Board Chair David Sease and WFYI President & CEO Lloyd Wright.

As we look back on 2009, we would like to take a moment to thank you for your support of WFYI Public Media. Your contributions not only keep WFYI on the air, but they help make Central Indiana a better place to live.

Over the past year, WFYI – like so many other organizations – faced unprecedented challenges while trying to maintain the distinctive programs and services that set it apart. But, thanks to the generosity of individual members, volunteers, corporate sponsors and community partners WFYI is weathering the storm and continues to serve as a center of discovery for Central Indiana residents.

Your support is the catalyst for what we do. Here are a few examples of what we achieved together in 2009.

WFYI continued to build on its reputation for quality local television programming and was rewarded with nine regional Emmy Awards. On the radio, Hoosiers were kept informed about happenings at the Statehouse, the local economy and much more by a news team that collected five awards from the Indianapolis chapter of the Society of Professional Journalists.

WFYI's Development Department also received national recognition for the second consecutive year with the PBS Award for Overall Development.

Your support also reaches directly into the lives of residents across the state. Among WFYI's outreach initiatives was *Get Help. Get Hope. Addressing Indiana's Mortgage Crisis*. WFYI partnered with local organizations on a television production and provided resources to homeowners who were facing foreclosure.

Outreach initiatives also provided training to early education professionals and encouraged community conversations on important topics like literacy and leadership in education. And, Indiana Reading and Information Services continued to serve as an around-the-clock communications link for Hoosiers who are reading impaired by providing readings of local and national periodicals, and selected books.

WFYI will continue to build on these successes in 2010, and we are thankful to have so many partners backing our mission. Thank you for your support. We truly could not do it without you.

Lloyd Wright
President & CEO
WFYI Public Broadcasting

David G. Sease
Board Chair
Metropolitan Indianapolis Public Broadcasting

WFYI PUBLIC TELEVISION



On June 12, 2009, WFYI switched off its analog signal and entered a new, digital era of television broadcasting. The station now broadcasts its quality entertainment, public affairs and educational television exclusively on three digital channels – WFYI 1 (HD 20.1), WFYI 2 (DT 20.2) and WFYI 3 (DT 20.3).



The new services enable WFYI to provide more of the high quality national programming you've come to expect from PBS, plus local programs like *Indiana Lawmakers*, *Indiana Week in Review*, *Across Indiana*, *Judy O'Bannon's Foreign Exchange* and *Inside INdiana Business with Gerry Dick*.

WFYI's main schedule is on digital channel 20.1. You'll find PBS KIDS programs in the daytime and news, public affairs programs, documentaries, British comedies and how-to programs in the evening. The 20.2 digital channel is V-me (pronounced veh-meh), a Spanish language service developed using the public television model. The 20.3 digital channel features great how-to programs with cooking, home improvement, painting and more during the day, and local and national productions from 8 pm to midnight.

From top: Judy O'Bannon in Turkey; Gerry Dick; the *Indiana Week in Review* panelists.



2009 AWARDS

2009 Emmy Awards

Children / Youth Program – **Indiana Expeditions**

Health / Science Program or Special – **Natural Heritage of Indiana - Life on Land**

Human Interest - Single Story or News Story – **A Ride To Remember**

Interview / Discussion Program Series or Special – **Mickey's Corner**

Magazine Program Series or Special – **Across Indiana**

Magazine Program Feature Segment – **A Reason To Dance**

Crafts Photographer Non News – **Natural Heritage of Indiana - Life in the Water**

Crafts Writer Non News – **A Man's Garage Is His Castle**

Advanced Media Crafts Writer / Producer – **Arts Council of Indianapolis**



SPJ Best in Journalism Awards

First Place

Education Coverage (television) – **Ready to Read**

Videography – **Judy O'Bannon's Foreign Exchange: Turkey – Bridge Under Construction**

Best Documentary – **Natural Heritage of Indiana**

Science Reporting (television) – **Natural Heritage of Indiana**

Second Place

Social Justice (television) – **A Song for Peace**

Television Documentary – **Judy O'Bannon's Foreign Exchange: Turkey – Bridge Under Construction**

Television Feature – **Reason to Dance**

Third Place

Television Feature – **Thought for Food**

.....
 "PUBLIC TELEVISION PROVIDES THE ONLY CONSISTENT QUALITY PROGRAMMING ON TELEVISION AND RADIO. SINCE DIGITAL CONVERSION, AND MY UNWILLINGNESS TO SUPPORT CABLE TELEVISION PROVIDERS, I HAVE RELIED MORE ON PUBLIC TELEVISION FOR INFORMATION AND ENTERTAINMENT."

– Christine, a member in Indianapolis

WFYI PUBLIC RADIO



Indianapolis Mayor Greg Ballard talks with Radio News Anchor Sharon Alseth in the WFYI Public Radio studio.

WFYI Public Radio provides quality local and national public affairs, arts and news programs, along with award-winning state and local news coverage.

WFYI Public Radio broadcasts two distinct services on three channels. WFYI's main service is 90.1 FM HD1. Its programming is a mix of national and local arts and public affairs programs like *Indiana Week in Review*, *Indiana Lawmakers*, *The Art of the Matter*, *The Blues House Party* and *Sound Medicine*. The service is simulcast on the analog signal (90.1 FM) and the HD channel (90.1 FM HD1).

The Point, on 90.1 FM HD2, delivers entertaining and informative public radio talk programs, plus a fresh dose of music. The Point includes a variety of local programs like *Film Soceyology*, *Old School* and *Velvet Escape*.

WFYI reaches listeners beyond Marion County through its community partnerships with Franklin College, in Johnson County, and Wabash College, in Montgomery County. WFYI provides NPR, PRI and BBC programming on the student-run radio stations. The simulcast agreements allow WFYI to reach listeners throughout Marion County and much of Bartholomew, Hendricks, Johnson and Montgomery counties.

WFYI Public Radio's services are also available through a realtime Web stream at wfyi.org. Select program archives and daily newscasts are available online as well.



From left: Host Jay Johnson; Morning Edition Host Scott Hoke; and WFYI Radio News Manager Mary Hartnett.

2009 AWARDS

SPJ Best in Journalism Awards

Consumer Reporting (radio) - **Foreclosure**

Government Coverage (radio) - **Gubernatorial Candidates and the Economy**

Environmental Coverage (radio) - **Green Manufacturing**

Science Reporting (radio) - **Caring for Life, Organ Donation**

Second Place

Social Justice (radio) - **Medicaid**

IBA Spectrum Awards

Mini Documentary or Series (radio) - **Water Pressure**

Special Interest and Cultural Reporting (radio) - **Sound Medicine**

WFYI PUBLIC TELEVISION
SERVES NEARLY

475,000

HOUSEHOLDS ACROSS

27

COUNTIES

LEARNING SERVICES / OUTREACH

Public broadcasting is unique in its public service mission, and WFYI's community outreach and learning services department sets it apart from other broadcasters.

The department's efforts complement radio and television programming through community workshops, forums, training opportunities and educational outreach. These efforts provide an opportunity for dialogue on important issues in the Central Indiana community. Throughout the year, residents were engaged in conversations about local water infrastructure, education administration, financial literacy and the issue of home foreclosure in Indiana.

.....
"MY 10-YEAR-OLD SON AND I LOVE BOTH NPR AND PBS AND LISTEN AND WATCH EVERY DAY. THE PROGRAMS ARE GOOD STARTING POINTS FOR DISCUSSIONS AND HELP ME TEACH HIM ABOUT DIFFERENT POINTS OF VIEW AND WAYS TO LIVE. THANK YOU VERY MUCH!"

—Tena, a member in Plainfield

WFYI provides Indiana educators with online professional development through PBS TeacherLine. The convenient online courses are one way teachers and schools can meet federal requirements established by the No Child Left Behind Act and earn credits to maintain their certification.

WFYI is committed to promoting literacy and education through workshops about child development and literacy programs like Parenting Counts and Ready to Learn for local parents and early childhood educators.



Word Girl

ONLINE SERVICES

WFYI's online services provide an interactive experience to complement many local and national broadcasts on television and radio.

On the site, visitors can search schedules for each of WFYI's television and radio services. The Web site also delivers information about WFYI's special events, upcoming volunteer opportunities and professional development for Hoosier educators at PBS TeacherLine. Viewers and listeners are also encouraged to access wfyi.org for additional resources related to local productions.

The Web site also has a continuously growing library of audio and video podcasts, including archives of interviews and shows featured on 90.1 FM HD1 and streaming video archives of WFYI television productions like *Across Indiana*, *Indiana Lawmakers* and *Indiana Week in Review*. WFYI Public Radio provides a realtime Web stream, allowing Central Indiana residents to stay connected to their community from anywhere in the world that access to the Internet is available. The station also simulcasts its HD offerings through the Web, making them available to those without an HD radio.



The screenshot shows the WFYI website interface. At the top, the WFYI logo is on the left, and navigation links for PUBLIC TELEVISION, PUBLIC RADIO, HD, LEARNING SERVICES, EVENTS, SUPPORT, and SHOP are in the center. On the right, there are social media icons for Facebook, Twitter, YouTube, and a search bar. The main content area features a large article titled "Facing the Mortgage Crisis" with a photo of several people. Below the title, it says "People, Connections, Resources." and provides navigation links: Home | PBSA | Local Resources | FAQ | Get Help | Get Hope | Indiana's Mortgage Crisis. A "GET HELP. GET HOPE." button is prominent. The article text discusses a grating from Lt. Gov. Becky Skillman and Indiana Supreme Court Chief Justice Randall Shepard, and mentions a studio discussion moderated by John Katzenberger. A sidebar on the left includes logos for CPB, WFYI 8-NEWS, ARTS COUNCIL OF INDIANAPOLIS, INDIANAPOLIS FOUNDATION, and ARTS IN INDIANA. A sidebar on the right lists various community organizations like CICOA, Fairbanks, and GOOLZER.

Facing the Mortgage Crisis on wfyi.org

IRIS

Indiana Reading and Information Services (IRIS) serves the Central Indiana community and beyond as an around-the-clock communications link for Hoosiers who are reading impaired.

IRIS staff and volunteers provide a service for those who cannot read normal print – due to blindness, low vision, physical impairments, illness, learning disorders or illiteracy – allowing them to stay connected with their community through local news and information, or to relax with a good book.

IRIS broadcasts are also available via audio streaming on the World Wide Web, allowing users to access the service anywhere there is an Internet connection and Windows Media Player. Anyone with the proper certification may acquire a user name and password to access the Web stream, in addition to other IRIS resources.

The Nina Mason Pulliam Statewide Dial-up Service connects 14 communities across the state providing residents with print impairments with a selection of nearly 40 daily and weekly newspapers, and several other publications.

Throughout the year, IRIS served more than 900 individuals through the Nina Mason Pulliam Statewide Dial-up Service, plus an additional 938 individuals across the state through special radio broadcasts and the Web.



James Michaels, a member of the IRIS Advisory Council, uses a special radio to tune in an IRIS broadcast.

VOLUNTEERS

WFYI was founded through a spirit of volunteerism and dedication to public broadcasting. That spirit remains strong thanks to the hundreds of volunteers who donate their time each year to help WFYI build communities and strengthen families in Central Indiana.

More than 800 individuals volunteered with the various departments at WFYI for over 18,000 hours, providing human resources valued at more than \$340,000.

WFYI volunteers lend a hand with a variety of tasks, from answering the phones during television and radio membership drives, to

preparing weekly mailings every Thursday morning. They are a crucial part of the Indiana Reading and Information Services, reading for live and recorded broadcasts each and every day for individuals who are reading impaired.

Volunteers are also vital to WFYI's efforts to connect with the community through signature events like WFYI's *Let's Meet PBS KIDS in the Park*, *The Ice Miller Indy Wine Fest*, hosted by WFYI, and *Speaking of Women's Health*®. They even staffed a water stop during the OneAmerica 500 Festival Mini-Marathon.



From left: Volunteers at Let's Meet; lending a hand at Speaking of Women's Health; and the 2009 100 Hour Volunteers.

COMMUNITY EVENTS



From top: The 2009 Let's Meet PBS KIDS in the Park; the Ice Miller Indy Wine Fest; and Emily Freeze Conference Chair of Speaking of Women's Health.

WFYI's mission to be a center of discovery is on display during numerous community events throughout the year.

In February, the *Ice Miller Indy Wine Fest*, hosted by WFYI and presented by Clark Appliance, attracted wine enthusiasts and novices to the Indiana Roof Ballroom. Wine experts shared their knowledge of fine wines from across the state and around the world during this elegant evening.

WFYI's *Let's Meet PBS KIDS in the Park* returned in June for the 16th year. The daylong, free, family celebration, presented by Riley Hospital for Children and Marsh Supermarkets, attracted approximately 40,000 people to Veterans Memorial Plaza and American Legion Mall in downtown Indianapolis. The largest PBS KIDS event of its kind in the nation featured non-stop entertainment, PBS KIDS walkaround characters and included educational activities that reflected WFYI's commitment to learning.



For the 12th year, WFYI hosted the *Speaking of Women's Health*® conference at the Indiana Convention Center. More than 1,200 attended the daylong event that featured engaging presentations about physical, mental, financial and spiritual health from local and national speakers. Several Central Indiana health-related organizations also hosted informative interactive booths and health screenings during the event.

WFYI was a partner with the Spirit and Place Festival, hosting the first-ever Spirited Chase. Hundreds of participants became "tourists in their own city," visiting six inspiring locations and learning more about them through activities.

WFYI also participated in community events like the Broad Ripple Art Fair, the Penrod Arts Fair, INDACS Festival and Competition and many more.

THE YEAR IN BRIEF

January



WFYI opens its doors January 24 for a behind-the-scenes evening at its new headquarters to celebrate the successful completion of Phase I of its capital campaign.

Fans of PBS KIDS characters Curious George and Super Why enjoy *Story Time in the Studio* with breakfast, activities, story time and a meet and greet with the characters.



WFYI, along with *A Place of Our Own*, recognizes six Child Care Providers of the Year for their outstanding service to young children and their families. The honorees were Natalie Kanady, Deborah Flowers, Mirian Contreras, Lisa Vaughn, Sabrina Capen and Chris and Mary Bivens.

Indiana Lawmakers begins its 28th season with the opening of the 2009 session of the Indiana General Assembly.

Inspiration Cast in Bronze: A Communities Building Community Special, explores the idea of public memorial art as it follows the creation of memorials to the late Gov. Frank O'Bannon.

February



The *Ice Miller Indy Wine Fest*, hosted by WFYI and presented by Clark Appliance, attracted wine enthusiasts and novices to the Indiana Roof Ballroom. Wine experts shared their knowledge of fine wines from across the state and around the world during this elegant evening.

WFYI Public Radio's award-winning *Water Pressure* series explores the issues surrounding Indiana's waste, storm and sewer water infrastructure. The five-part radio special was connected to the PBS documentary *Liquid Assets*, and WFYI's related outreach initiatives.

March

WFYI partners with the American Pianists Association for a five-part broadcast series featuring each of the 2009 Classical Fellowship Awards Finalists in solo programs and concertos with the Indianapolis Chamber Orchestra.



WFYI's *Wired & Inspired* series celebrated the vision and determination of women to start and run their own business during an evening with entrepreneur, executive and business owner Billie Dragoo.

April



WFYI introduces its Together TV campaign, encouraging families to watch educational television together, and enjoy related themed events in the community.

WFYI's local television production *A Penny Saved*, along with its related outreach program, serves as a guide for teachers, youth program leaders and parents as they look for the most effective ways to teach financial literacy in the Hoosier state.



WFYI partners with Purdue University to distribute the radio special, *Sustainability*. Part of an ongoing *Global Challenges* series from the Purdue University College of Engineering, the special explored energy needs and environmental challenges.

THE YEAR IN BRIEF

May

WFYI participated in the Broad Ripple Art Fair, hosting the children's area and stage.



WFYI joins several community partners for the local television production, *Get Help. Get Hope: Addressing Indiana's Mortgage Crisis*, and an extensive outreach initiative to help Hoosier facing foreclosure.



The BBC's *World, Have Your Say* broadcasts live from WFYI's Richard S. Idler Radio studio, leading a global discussion on the H1N1 flu outbreak with guest Dr. Judith Monroe, Indiana State Health Commissioner.

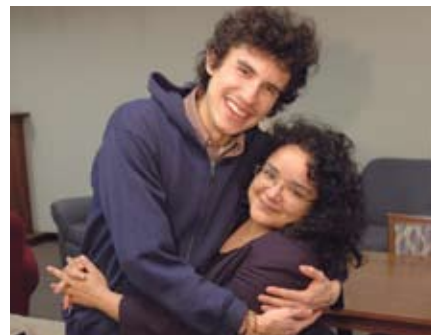
June

On June 12, WFYI switched off its analog signal and entered a new, digital era of television broadcasting. WFYI broadcasts on three digital channels - WFYI 1 (HD 20.1), WFYI 2 (DT 20.2) and WFYI 3 (DT 20.3).



Let's Meet PBS KIDS in the Park returned in June for the 16th year. The daylong, free, family celebration, presented by Riley Hospital for Children and Marsh Supermarkets, attracted approximately 40,000 people to Veterans Memorial Plaza and American Legion Mall in downtown Indianapolis.

More than 450 young authors and artists in grades K-3 submitted illustrated stories to the 15th Annual Reading Rainbow Young Writers and Illustrators Contest.



WFYI's local television production *Perigrinos/Pilgrims: A Musical Journey* follows composer Gabriella Lena Frank over the course of two years as she creates a new orchestral piece commissioned by the Indianapolis Symphony Orchestra.

July

WFYI launches a new Web site just for kids 6-10 years old, encouraging them to send postcards from their favorite place, or a place they visited. The submissions were posted on wfyi.org/kids

August



For the 12th year, WFYI hosted the *Speaking of Women's Health*[®] conference at the Indiana Convention Center. More than 1,200 people attended the daylong event that featured presentations about physical, mental, financial and spiritual health from local and national speakers.



WFYI's British Telly Club welcomed special guest Nicholas Smith for a special meet and greet. The actor is best known for his role as Mr. Rumbold on the British sitcom classic *Are You Being Served?*

THE YEAR IN BRIEF

September

WFYI Public Television in partnership with WFWA (Fort Wayne), PBS and the Wallace Foundation, devotes an entire evening to education, airing the PBS documentary *The Principal Story* and two local documentaries, *The Good that You Do* and *Reading, Writing 'n' Relevance*.



WFYI Public Radio's *The Art of the Matter*, celebrates its 10th year of highlighting the Central Indiana arts scene.



WFYI participated in the Penrod Arts Fair, sponsoring the Blues and Children's stages. WFYI Public Radio broadcast *The Art of the Matter Live from Penrod* throughout the day.

WFYI's 3rd Annual Online Auction raises money for programs and services.

WFYI's local television documentary *History Rising: Conner Prairies' Balloon Venture* follows the creation of the 1859 Balloon Voyage exhibit at Conner Prairie Interactive History Park.

October



WFYI Public Television launches V-me, a Spanish-language service, on WFYI 2 (DT 20.2). The service is commercial free and comprised of educational and entertaining programming for the entire family.



WFYI hosts the first Indiana Dramatic Arts and Communications Festival and Competition. The festival is an opportunity for young children, youth and adults to share their passion for poetry, drama and communication in a nurturing environment.

November



WFYI partnered with the Spirit and Place Festival, hosting the first-ever Spirited Chase, a daylong tour of six inspiring Indianapolis destinations.

WFYI, John P. Crane House and Volunteers of America partner to create Checkpoints and Challenges, an educational role-playing board game that provides insight into the path offenders must take as they reenter the community and into the roles of professionals who monitor, regulate, encourage and support those efforts.



WFYI's television production and outreach initiative, *When Did I get Old? Reflections on Aging Today*, explores the questions surrounding the aging process.

December



PBS NewsHour premieres on WFYI, updating the respected *NewsHour* program with a new look and a stronger connection between the Web site and broadcast.

.....
"WFYI IS A LIGHTHOUSE IN A SEA OF CONFLICT-FOCUSED JOURNALISM. IT IS FANTASTIC, INTELLECTUAL, OLD FASHIONED DEBATE AND DISCUSSION. I LEARN MORE ABOUT ALL PERSPECTIVES THROUGH THIS SEEMINGLY FADING STYLE OF JOURNALISM. THANK YOU FOR YOUR INTEGRITY, WFYI."

— Kelli, a member in Indianapolis

2009 LEADERSHIP GIVING TO WFYI

THE VISIONARY CIRCLE

WFYI's Visionary Circle was established to increase annual unrestricted support to the station. Through special functions, unique benefits, opportunities for interaction with PBS and NPR personalities, and listings in WFYI publications, the Visionary Circle recognizes and involves those individuals who contribute a minimum of \$1,000 annually.

\$20,000+

Mrs. Yvonne H. Shaheen
Ms. Bren Simon

\$10,000 - \$19,999

Barth Electric Co
Mr. Neal F. Rothermel &
Mrs. Mandy J. Moore

\$5,000 - \$9,999

Jeanelle & Russell Adamak
Rollin M. & Cheri Dick
Mr. & Mrs. Eugene B. Glick
Mr. & Mrs. Ken Inskeep
Dr. Sara H. Murphy M.D. &
Mr. Clifford A. Hull
W C Griffith Foundation Trust
O'Bannon Foundation Fund
Amy & Clay Robbins
Mr. & Mrs. Glenn M. Swisher
Woodard Van Riper Family
Foundation
Mr. Lloyd Wright

\$2,500 - \$4,999

Michael & Barbara E. Branich
Mr. Greg M. Chappell &
Dr. Amy S. Chappell
Ms. Amy Conrad Warner &
Mr. John Warner
Mr. & Mrs. Don B. Earnhart
Dr. & Mrs. William G. Enright
Mr. Gregory Gaich & Mrs. Carol Gaich
Dr. Mitch Goldman
Mrs. C. Perry Griffith
Mr. & Mrs. Jay H. Holmes
Mr. & Mrs. Clifton E. Johnson
Mary K. & John Lisher
Anne M. & Eenne M. Quets
Mr. Howard C. Riemensperger
Dr. Holly L. Simpson &
Dr. Bill Beechler
Thomasson Foundation
Ms. Susan Vinick
Dr. Rosalind H. Webb

\$1,000 - \$2,499

The Ackerman Foundation
Dr. Kay V. Adams
Michael P. Alerding
Ms. Pamela V. Allen
Mr. & Mrs. David S. Allen
Mr. Ronald J. Allen &
Ms. Linda J. McKiernan-Allen

Ms. Rosanne E. Ammirati &
Mr. Kevin R. Krulewitch
Dr. Pamela W. Anderson
Mr. & Mrs. Robert J. Anderson
Mr. & Mrs. Bob Armitage
Mr. & Mrs. Robert Bader
Sarah C. Barney
Rena & David Barraclough

Jeff M. & Amy J. Barron
Mrs. Constance K. Bash
Frank & Katrina Basile
Mark & Carolyn Bates
Dr. Teresa D. Beam &
Mr. Eric A. Adolph
Mr. & Mrs. Eric J. Bedel
Mrs. K. N. Bennett
Craig A. Berkley &
Gail M. Daly-Berkley
Mr. & Mrs. Charles M. Blair
Dr. John C. Bloom
Ted & Peggy Boehm
Mr. & Mrs. Leeland Boren
Mrs. Myra J. Borshoff-Cook &
Mr. Frank M. Cook

Mr. & Mrs. Fred Boso
Tacey A. Boucher & Robert Maple
Mr. & Mrs. Forrest B. Bowman Jr.
Tom & Annette Boyle
Ms. Amy Conrad Warner &
Mr. John Warner
Dr. & Mrs. Richard C. Bump
Dr. & Mrs. John N. Calley
Mr. & Mrs. Vince Caponi
Mr. & Mrs. James M. Carr
Dr. Gerard Carthy
Mr. & Mrs. George C. Charbonneau
James Cherry
Dr. & Mrs. Andrew C. Chester
Mr. & Mrs. Stephen A. Claffey
Dr. & Mrs. Charles M. Clark Jr.
Mr. & Mrs. David Clemants
Alan & Susan Cloe
Mr. Alan H. Cohen &
Mrs. Linda M. Cohen
Dr. & Mrs. Michael Coscia
John & Michi Countryman
Mr. & Mrs. Albert E. Crandall
Mr. & Mrs. Stephen M. Cranfill
Mr. & Mrs. C. Dennis Cryder
Mr. & Mrs. C. Richard Davis
Mrs. Mary Emily S. Davison
Mr. & Mrs. Rich J. Dimmack
Mr. & Mrs. Douglas E. Dorman
Mr. Craig D. Doyle & Mrs. Lee Doyle
Mrs. Kristin Doyle

Brian Duff

Mr. & Mrs. Dan Dumbauld
Dr. David W. Dunn & Dr. Pam Christy
Ms. Judith K. Dunson
Mr. & Mrs. Stephen J. Dutton
Mr. & Mrs. Dennis Dye
Lori Efrogson-Aguilera &
Mr. Sergio Aguilera
Mr. & Mrs. Robert W. Elzer
Mrs. Mary K. Emery
Mr. Kevin R. Erdman &
Adrienne J. Provenzano
Mr. & Mrs. Douglas D. Everidge
Dr. & Mrs. Nagy A. Farid
Jack & Sonja Farr
Mr. & Mrs. Lavon S. Feger
Ron & Susan Fisher
Johnson-Weaver Foundation
Ms. Kristi J. Forshee
Mr. William L. Fortune Jr. &
Mr. Joseph D. Blakley
David Fowler
Mrs. Indra N. Frank &
Mr. Mark S. Frank
Dr. & Mrs. Bruce H. Frank
Chris Fretts & Claire Dana
Mr. & Mrs. Michael Fruehwald
Phyllis & Ed Gabovitch
Catherine Gaffigan
Mr. & Mrs. Daniel L. Gaither
Mrs. Kay Gallagher
Mr. Craig A. Garrett
Chip & Megan M. Garver
Ms. Alice J. Gerlach
Mr. Eric L. Gillispie &
Ms. Patricia T. Gillispie
Mr. Joseph R. Grahm
Dr. Brian W. Grant &
Rev. Claudia E. Grant
Mr. Vance M. Greening
Mr. Lynn R. Guse
Tom & Susie Hacker
Mr. & Mrs. Jeff C. Hadden
Mrs. Gail Hall
Mr. & Mrs. James E. Hamby
Mr. & Mrs. Avrom Handleman
Mr. & Mrs. Charles P. Hanover
Dr. & Mrs. Donald R. Hardman
Rhonda Harness
Ms. Anita Harvey
Dr. & Mrs. Samuel M. Hazlett
Mr. Michael N. Heaton
Mr. Joseph F. Heidelman
Dr. Paul Helft

Dr. Charles H. Helmen
Mr. & Mrs. John P. Hengesbach
Richard E. & Martha J. Hennessey
Mr. Jerry Henricks &
Ms. Beth A. Henricks
Nora & Tom Hiatt
Mr. & Mrs. David W. Hoggatt
Ann C. Holcombe
Mr. Theodore F. Holland
David & Gayle M. Holtman
Dr. Sharon L. Hoog &
Mr. Ken Remenschneider
Dr. & Mrs. Robert P. Hooker
Mr. & Mrs. James W. Hubbard
Mr. Bret E. Huff & Serena Donnelly
Mr. & Mrs. V. William Hunt
Mr. & Mrs. Stan C. Hurt
Mrs. Mary S. Hutton
Dr. & Mrs. Richard S. Idler
Mr. Ali Jafari &
Ms. Maymanat M. Jafari
Michele E. Janin & Tom Linebarger
Mr. John C. Jenkins
Mr. Eric R. Johnson
Jeremy L. & Caroline Johnson
Mrs. Nancy B. Johnson
Dr. Terry Jones & Susan Hoffman
Mr. Dave Jongleux &
Ms. Lynn B. Jongleux
Mr. & Mrs. Gary V. Kaiser
Kara Kapke
Dr. & Mrs. Michael G. Kapp
Sreekanth Karaman
Mr. Joseph G. Kendall &
Mr. Charles E. Kendall
Michael H. & Pegg Kennedy
Mr. & Mrs. Megan M. Garver
Mr. & Mrs. Larry Kitchel
Mr. Thomas A. Krake
Mr. Jon Laramore &
Ms. Janet McCabe
Blake Lee & Carolyn Neubauer
Ms. & Mrs. Beth Ann Leedy
Mr. Ho-Shen Lin
Mr. & Mrs. Bill Longest
Mr. & Mrs. Jonathan B. Lupton
Mr. & Mrs. J David Maas
Kevin Malley
Ms. Cassandra L. Marshall
Ms. Joy S. Masterson
Dr. William G. Mays & Dr. Rose Mays
Dr. Robert McDonald &
Dr. Mary Walsh
Ms. Melissa A. McHaffie
Mr. & Mrs. E. Kirk McKinney Jr.
Marni McKinney
Meyer Family Fund
Mr. Franklin I. Miroff &
Dr. Susan Maisel

Dr. Arthur Mirsky &
Dr. Patricia S. Mirsky
Mrs. Ina M. Mohlman
James Moldenhauer
Robert & Judy Muessig
Dr. & Mrs. John T. Munshower
Mr. & Mrs. John M. Mutz
Mrs. Sylvia G. Neal
Mrs. Gail Neuwirth-Geisler &
Mr. Alan Geisler
Donna Oland
Mr. Joseph K. Orr
Mr. & Mrs. Sheldon C. Ort
Mr. & Mrs. John W. Patten
Dr. & Mrs. Steve Pennal
Dr. William M. & Mrs. Gail M. Plater
Rebecca C. & Jonathan Polak
Mr. & Mrs. Robert Postlethwait
Mr. Thomas R. Price &
Mrs. Patricia M. Williams
Mr. Gary P. Price &
Mrs. Brenda C. Rising-Moore
Mr. & Mrs. David A. Resnick
Mrs. Mariel K. Reynolds
Mr. & Mrs. Robert F. Rice
Dr. & Mrs. Merrill A. Ritter
Mr. & Mrs. John T. Roberts
Mrs. Fern W. Roesch
Ms. Joyce Q. Rogers &
Mr. Kenneth Rogers
Dr. Humberto E. Rojas
Rolls-Royce Corporation
Dr. & Mrs. Andrew J. Russell
Mrs. Nancy Russell &
Mr. Frank E. Russell
Mr. & Mrs. Robert Schloss
Dr. Albert E. Schultz &
Dr. Marcia Kolvitz
Penelope Scopelitis
Mr. & Mrs. David G. Sease
Dr. & Mrs. Gene E. Sease
Dr. Marie-Claude Shanafelt &
Dr. Armen Shanafelt
Dr. Marguerite K. Shephard M.D.
Mr. Frank Sheski
Mr. & Mrs. Don K. Shuck
Mr. Chetan Shukla &
Mrs. Leena Shukla
Ms. Debra M. Simmons Wilson
Mrs. Marilyn Sleppy
Jenelle Smagala
Mr. E. Paul Smith
Ms. Pamela J. Smith
Jack & Susanne Sogard
Dr. & Mrs. Naval Sondhi
Dr. & Mrs. Douglas G. Spaulding
Dr. & Mrs. Christopher Stack
Mr. Karl Steegmann
Ms. Mary C. Stergar
Mr. & Mrs. Robert W. Strohmeier Jr.

Norman G. & Dawn C. Tabler
Mr. & Mrs. Sidney A. Taurel
Ms. Diane Taylor
Dr. David L. Tetrick
The Brave Heart Foundation
Ms. Patricia A. Thiem
Debbie Thomas
Mr. Gerald L. Thompson &
Dr. Jean Miller
Tobias Family Foundation
Mr. John E. Toth &
Ms. Stacy A. Reiffes
Dr. Randall C. Trowbridge
Mr. & Mrs. Robert Turner
Mr. & Mrs. Matthew J. Van Awelare
Barbara M. Vonnegut
Richard C. Vonnegut Jr.
Mr. John Waidner &
Ms. Patrice C. Waidner
Ms. Susan L. Wakefield & Mr. Daniel
B. Wheeler
Leigh Wall Harris & Gary Thompson
Dr. Emily Walvoord & Dr. Greg
Bauwens
Mr. & Mrs. Richard A. Warne
Mr. & Mrs. Brian W. Welch
Mr. & Mrs. Courtenay Weldon
Adam Wenger
Anna S. & James P. White
Mr. Jeff Whorley Jr. & Ms. Lisa
Haynes
Donna Wiley
Mr. & Mrs. Bill Williams
Mr. John A. Williams & Mrs. Sarah L.
Gran Williams
Ms. Susan Wisely & Mr. Michael
Gunason
Dr. Thomas E. Woerner
Mrs. Anita R. Wylie
Ms. Pamela S. Young
Dr. & Mrs. Philip D. Zaneteas
Mr. & Mrs. Darell E. Zink Jr.
Back Home Again Foundation
Ms. Sally F. Zweig

The Visionary Circle listings reflect major donor contributions \$1,000 and higher between January 1, 2009 and December 31, 2009. Every effort has been made to ensure the accuracy of this list. Please accept our apologies for any inadvertent errors or omissions. Please send corrections or questions to Theresa Tetrault, director of development & strategic gifts, WFYI, 1630 N. Meridian St., Indianapolis, IN 46202; call (317) 614-0439 or e-mail ttetrault@wfyi.org

INDIVIDUALS CONTRIBUTED

\$3,396,119

TO WFYI PUBLIC BROADCASTING
IN 2009

2009 LEADERSHIP GIVING TO WFYI

THE SOUND VISION SOCIETY

Society continues to be WFYI's donor recognition program for donors between \$250 and \$999.

\$750 - \$999

Dr. Rafat Abonour
Mrs. Beverly A. Abramson
Mr. John W. Adams
Mr. & Mrs. Bob Anker
Ms. Leah M. Austin
Mr. & Mrs. Walter M. Bagot
Mary Evelyn & Robert Barcus
Mr. & Mrs. Merton R. Barry
Mr. Spencer Bavender
Mr. & Mrs. Richard M. Bellows
Mr. & Mrs. Ben Blanton
Peter Bons
Mr. & Mrs. Charles E. Brandenburg
Mr. Willis K. Bright Jr.
Mr. & Mrs. Lee A. Casebere
Mrs. Rita M. Cavaness
Dr. Judith A. Cook
Ms. Margarita De La Torre
Ms. Barbara Duke Sams
Dr. A. Keith Dunker & Ms. Ya-Yue J. Van
Mr. William R. Ehrich
Michael Evanchak
Robert L. & Christy Gauss
Dennis Gill
Ms. Cris Halter
Mrs. Martha N. Hardacre
Polly H. Hix
Mr. & Mrs. John C. Hoard
David C. Hoffman
Karen M. & William D. Holmes
Daniel Hughes
Ms. Linda L. Jackson
Stephen Kingsley
Mr. & Mrs. Phillip L. Knotts
Mr. Tim J. Konich
Mr. Victor E. Kraning
Mr. & Mrs. Robert E. Krivi
Ms. Lisa McKee Lanham & Mr. Michael Halstead
Mr. & Mrs. Jack E. Leonard
Mr. James Longest
Dr. & Mrs. Carlos Lopez
Mr. & Mrs. James Marsh
Mr. & Mrs. Kieren J. Mather
Rodney & Martha Y. Maust
Allen McCormack
Dr. Daniel H. Mowrey
Ms. Brenda Myers & Mr. Jim Lindgren
Dr. Mara Nitu & Dr. Alex Nitu
Mr. & Mrs. John Parsons
Mr. Heinz E. Reim & Ms. Laura A. James-Reim
Dr. & Mrs. Richard H. Riegner
Dr. Deborah A. Ronco
Mrs. Deborah Rose-Allaben
Ms. Mary C. Rudy-Chapman & Mr. Chris P. Rudy-Chapman
Mr. Johnny L. Sanders
Ms. Cathy O. Schmeltz
Ms. Paula Schmidt-Lewis & Mr. Jeffrey O. Lewis
Cornell Sims
Mrs. Eileen J. Stanford
Dr. Andrea R. Terrell & Dr. Michael Evans
Mr. Ralmond Tust Jr.
Mr. & Mrs. John H. Tynan
Mr. & Mrs. James C. Vogel
Mr. & Mrs. Ed West
Ms. Barbara J. Wilder
Ms. Katherine M. Wiles & Mr. Todd A. Lothery

Ms. Gretchen Wolfram
Ms. Holly K. Zanville
Dianna & Lewis True

\$500 - \$749

Mr. Thomas M. Ahmann
Mr. Mark Alberts & Meg Zachwieja
Mr. Charles Alexander
Norris E. & Carole M. Allen
Mr. & Mrs. Steven H. Ancel
Mr. & Mrs. David T. Anderson
Mrs. Ellen Annala
Mr. & Mrs. Mark Argentine
Mr. & Mrs. Michael A. Aspy
Dr. & Mrs. Joseph R. Baele
Dr. Melvyn Baez & Dr. Elena Baez
Mr. Dale Baker
Mr. & Mrs. John J. Baker
Mr. John Baker
Mr. Lawrence V. Barclay & Dr. Regina Turner-Barclay
Dr. Gerald S. Barker
Mrs. Charlotte A. Barnett
Ms. Carol Basesy & Mr. Robert E. Basesy
Mr. & Mrs. Richard S. Baugh
Mr. Keith Bean
Dr. Ken R. Beausang & Dr. Carol C. Beausang
Ms. Glendia Beck
Ms. Susan D. Becker
Mr. & Mrs. James W. Bell
Ms. Shirley Bengel
Thomas Berndt
Mr. Jerome L. Bessler & Dr. Astra M. Liepa
Mr. Raymond Bishop
Mrs. Joan Blacker
Ms. Jean S. Blackwell
Mrs. Suzanne B. Blakeman
Ms. Grace L. Blanchard & Mr. Evan G. Finch
Miss Mary B. Blue
Ms. Joyce A. Boadt
Ms. Martha Boden
Mr. & Mrs. David Bodenhamer
Mr. Eric R. Boes & Mrs. Tatianna M. Foroud
Mr. Michael R. Bohlander
Margaret Boling Mullin
Mrs. Eleanor F. Bookwalter
Mr. Thomas J. Bottorff
Dr. & Mrs. Robert Boyd
Ms. Reba Boyd-Wooden
Ms. Wendy W. Boyle
Ms. Patrice A. Bradley
Mrs. Patty J. Bragger
Mr. & Mrs. Robert Braitman
Dr. & Mrs. R. D. Braun
Mr. & Mrs. Anton A. Brazes
Mr. Jonathan E. Bricker & Dr. Susan D. Sutton
Mr. Herman Briggeman & Ms. Lee Ann Briggeman
Ms. Barbara J. Briggs
Mr. George S. Broadlick
Mrs. Barbara D. Brookshire
Mr. & Mrs. Michael Broome
Carole & Tom Brown
Mr. Ryan J. Brown & Mrs. Hannah N. Sullivan Brown
Mr. Frank B. Brown
Mr. & Mrs. Tim M. Bruemmer
Mr. & Mrs. Forrest L. Burford
Mr. & Mrs. Robert Burns
David & Lisa Burr

Ms. Cynthia Byer-Craney
Mr. & Mrs. Roy Cage
Mr. & Mrs. Philip J. Caito
Mrs. Debby L. Camper & Mr. Daniel E. Ball
Mr. Michael E. Carr
Cecile Carre
Patricia L. Carroll
Mr. & Mrs. Joseph J. Carter
Mr. Jeremiah J. Carter & Ms. Ellie S. Carter
Mr. & Mrs. Henry Carter
Mr. & Mrs. Thomas Caswelch
Mr. Hiroki C. Chalfant
Mr. & Mrs. Jeffrey D. Christoffersen
Ronald & Claudia O. Clark
Linda & Stephen Classey
Mr. Richard J. Cockrum
Mr. & Mrs. Jeffrey Cohen
Carolyn S. & Caroline Colee
Mr. & Mrs. James Canine
Mr. & Mrs. John D. Cook
Mr. & Mrs. Kevin M. Corcoran
Ms. Kathleen A. Corcoran & Mr. Brian M. Carlson
Mr. Paul Corsaro
Mr. Patrick Corsi
Dr. & Mrs. Dennis E. Coyle
Mrs. Nancy L. Cross
Ms. Diane Cruz-Burke & Mr. Craig Burke
Mr. & Mrs. William G. Cummings III
Mr. & Mrs. Gregory P. Cunningham
Mrs. Mary L. Curry
Mrs. Dianne K. Curtiss
Gary & Lynn Dauby
Mr. Michael J. Daum & Mrs. Paula K. Fike-Daum
Larry I. Davidson
Mr. Richard S. Davis & Mrs. Mary M. Davis
Ms. Carol S. Davis
Mr. Robert K. Dean
Dr. & Mrs. Frank M. Deane
Dr. & Mrs. Scott C. Denne
Kevin Deprey & Emily C. Wren
Ms. Pamela J. Depraz
Ms. Ann Dettwiler
Mr. Louis A. Dezelan & Mrs. Susan Wollenweber
Ms. Jane Diggs Bogard
Donald & Linda S. Dudine
Mr. & Mrs. James L. Durbin
Mr. Stephen Eck
Kurt Ehrhardt
Ms. Rebecca Elliott
Ms. Rosemary Ervin & Mr. Richard Schevitz
Mrs. Debbie Estes
Ms. Kari A. Evans
Ms. Paula M. Faunce
Audeen W. Fentiman
Dr. & Mrs. Norman L. Fogle
Ms. Dianna L. Fox & Mr. Kamnesh R. Pradhan
Mrs. Patricia S. Foxworthy-Mason
Paul T. & Loretta A. Fulkerson-Bird
Mr. Carl Gahwiler & Ms. Donna Gahwiler
Mrs. Annette Gambill
Miss Meenakshi Garg
Mr. & Mrs. Lesley R. Geddes
Mr. & Mrs. Doug Gettelfinger
Mr. Ron D. Gifford
John R. Gillespie
Mr. Charles A. Glomski

John Paul & Suzanne Godich
Mr. & Mrs. Michael P. Goheen
Mr. & Mrs. Irvin A. Goldblatt
Janice A. Goodman & Steven Pattison
Bert & Martha Gorman
Dr. & Mrs. Robyn Goshorn
Mrs. Selma Grant
Mr. Greg B. Greene & Ms. Pamela B. Greene
Victoria & James Gregory
Dr. & Mrs. Christian Gries
Mr. & Mrs. John P. Griffith
BMW Constructors, Inc.
Ms. Jacqueline A. Griswold
Tom Grote
Mr. Tim Graves
Ms. Janet L. Guthridge
Mrs. Sue R. Haadsmas-Svensson & Mr. Kjell A. Svensson
Mr. & Mrs. Michael P. Haffley
Dr. Carol L. Hagans & Mr. Thomas J. Wroblewski
Dr. & Mrs. Richard A. Hahn
Ms. Rose Hall
Mr. & Mrs. Ian A. Hall
Mr. John R. Hammond
Mr. Bernard M. Hanley
Mr. & Mrs. Arthur Hanna
Mr. John B. Harbaugh & Mr. Jack B. Harbaugh
Nancy J. Harrison
James & Angela J. Hauck
Dr. & Mrs. John R. Hayes
Mr. Theodore P. Haynes
Mr. & Mrs. Rod G. Hayward Jr.
Dr. Ann Hedderman
Mr. Larry Heller
Lisa D. Henley
Edgar Hennig
Mr. Gary Henriott & Mrs. Shelly Fitzgerald-Henriot
Heritage House Group
Barry E. & Deborah A. Herring
Mark Hesemann
Miss Elizabeth J. Hewett
Mr. Eric D. Higbie
Mr. Robert E. Hoke & Mr. Jeff A. Hostetler
Allergy And Asthma Consultants
Mr. Howard E. Holden & Ms. Susan M. Holden
Mr. Mark M. Holeman
Mr. Timothy Holling
Mr. & Mrs. George L. Hoshaw
Ms. Mary L. Huber
Mr. Dan Hurley
Indiana Energy Association
Mr. John Johnson & Ms. Daphne Johnson-Berger
Mr. & Mrs. Gary S. Johnson
Ms. Tammy L. Johnson
Mr. & Mrs. Andrew Z. Jones
Mrs. Margaret E. E. Jones
Dr. Louis N. Jungheim & Dr. Thalia L. Nicas
Mr. & Mrs. Larry Kane
Mr. Stacey M. Kaneshiro & Dr. Mary A. Ott
Mr. & Mrs. Dale Kantz
Marc & Dana Katz
Ms. Ruth V. Kellar
Dr. & Mrs. Marvin D. Kemple
Ms. Sue Kennedy
Ms. Cheryl L. Kile
Ms. Marilyn D. Kimble
Dr. John C. Kincaid & Miss Mary E. Soper
Miss Tracy E. Knight & Mr. Nicholas Grahame
Mr. & Mrs. Howard Knight

Kay F. Koch & Bryan Molloy
Mr. & Mrs. John M. Koke
Ms. Irene D. Krahulik
Diane A. Kreisher
Kurt & Judith Kroenke
Mrs. Kathleen M. Krueger
Gareth Kuhl & Amy Kotzbauer
Ms. Rose M. Kuntz & Ms. Rosemarie Kuntz
Dr. & Mrs. Gerald J. Kurlander
Mr. & Mrs. James E. LaCrosse
Mrs. Noreen L. Lacy
Mr. & Mrs. Stephen Lathrop
Law Office Of Curtis E. Shirley
Mr. & Mrs. Frank H. Learned
Dr. James E. Legrand & Dr. William A. Mirolo
Ms. Linda S. Leonard & Mr. Stephen G. Kozey
Mr. Jay W. Lesandrini
Dr. Dan Li & Mr. Shuyu Li
Ms. Nancy C. Lilly
Rev. & Mrs. David L. Livingston
Nancy & Martin Logan
Mr. & Mrs. James B. Lootens
Ms. Annemarie Lopeman
Mr. & Mrs. Anthony L. Lorenz
Mr. Lester E. Love
Ms. Jeanine A. Lugo & Mr. Nobel Lugo
Mr. & Mrs. Robert R. Lurvey
Mr. & Mrs. Carey Lykins
Dr. John T. Mail & Dr. Ingrid E. Mason Mail
Dr. & Mrs. Joseph J. Mamlin
Mr. & Mrs. Robert L. Mangus
Mr. & Mrs. Ryan E. Marquette
Mr. & Mrs. Michael D. Martin
Kevin J. & Patricia Martin
Mel & Trudy Massey
Ms. Margaret M. Maxwell
Mrs. Joan McCain
Mr. Robert J. McEnroe
Dr. & Mrs. David A. McEwen
Dr. William C. McGraw & Dr. Susanne Blix
Barry & Vicki McMaster
Dr. & Mrs. Carl L. McMillian
Mrs. Peg Meek
Ms. Tamara A. Menke
Peter Merante
Mr. Phillip D. Mervis
Dr. Beth E. Meyerson & Jill German
Mr. Horst O. Michaelis
Dr. Michael D. Miller & Mrs. Stacy D. Miller
Mrs. Barbara Miller
Mr. Richard Miller & Ms. Ellen Miller
Mr. & Mrs. Milton D. Miller
Mr. & Mrs. Lloyd H. Milliken
Mr. Steven J. Milner
Mrs. Pinkie M. Moffatt
Mr. Shanker Moily
Martin J. Moore
Dr. Jennifer Morgan & Mr. Bill Morgan
Ms. Patricia B. Moss & Mr. Gary K. Moss
Mr. Donald P. Motter
Mr. & Mrs. Robert L. Muller
Mr. & Mrs. William L. Muth
Mr. & Mrs. James M. Mutter
Miss Joan Myers
Dr. & Mrs. Robert D. Nation
Ms. Blessing N. Ndujubi
Mr. James L. Nevin & Ms. Cathleen L. Nevin
Mr. Donald P. Newkirk
Mr. & Mrs. Thomas E. Newlin

Jeanette H. Noyes
Perry Nystrom
Ms. Hilary D. Ogren
Steve A. & Debbie A. Oldham
Mr. Willis M. Overton III
Mr. & Mrs. Andrew J. Paine, Jr.
Mr. Andy M. Palm
Mrs. Victoria C. Palmer-Smith & Mr. Erik W. Streib
Mr. & Mrs. James A. Papke
Mrs. Elizabeth F. Parks
Mr. & Mrs. Doug Penleton
Ms. Deborah K. Pennington & Dennis K. Brown
Ms. Sheryl Peoples
Perelman Charitable Foundation Inc.
Ms. Jean Perrin
Mrs. Gail Perry
Dr. Mark D. Pescovitz & Dr. Ora H. Pescovitz
Clyde T. & Marilyn L. Pfisterer
Mrs. Marietta P. Pickett
Dr. Eric E. Pierson & Dr. Suzanne K. Pierson
Toby & Marie Powell
Aprurva Prakash
Mr. Steven H. Pratt
Karen Pruet
Ms. Sherry F. Queener & Dr. Steve W. Queener
Ms. Jane Rapinchuk & Mark Kowala
George E. Revtyak & Diane E. Richards
Mr. & Mrs. Gary Reynolds
Ms. Gail Rice
Ms. Rita L. Richardson
Mr. & Mrs. Dale J. Roberts
Mr. & Mrs. Gary M. Roe
Mr. & Mrs. Matthew Roesch
Dr. Franklin Roesner
Mr. & Mrs. Jim Rosenstele
Dr. Sandra S. Rossie & Dr. Harry Charbonneau
Jane S. Rothbaum
Ms. Judith H. Roudebush
Nathaniel Rowe
Ms. Sarah Rowland
George & Jan Rubin
Rev. & Mrs. James Rudiger
Mr. Joseph Ruppert
Mr. Michael S. Russo
Ms. Sally M. Sando
Dr. & Mrs. Scott Saxman
James P. & Mary Beth Schafer
Mr. & Mrs. Roger W. Schmenner
Mr. Edwin C. Schunke
Marion E. Scofield
Mrs. Pinkey D. Shah & Mr. Dilip Shah
Mrs. Carolyn A. Sharp
Mrs. Helen Sheeks
Dr. & Mrs. K. Donald Shelbourne
Ms. Katherine Shelby
Mr. John F. Shouse
Mrs. Georgann Shuffelberger
Mr. Robert Shuler
Rose & Thomas W. Sigborn
Ms. Hercharan K. Singh
Mr. & Mrs. Alvin E. Skoog
Mr. & Mrs. Richard Skrzynecki
George A. & Trela Smith
Mr. & Mrs. James G. Smith
Ms. Michele C. Smith & Michael A. Staszak
Mrs. Anne Cooper Smith
Kenneth Smith
Mr. & Mrs. Jack Snyder
Ms. Denise L. Solso
Mr. Fred Soskel & Mrs. Jo B. Ingram
Dr. Lucia M. Spears & Mr. Jay Smith

2009 LEADERSHIP GIVING TO WFYI

Mrs. Jennifer Stroehle
 Ms. Julie St James & Mr. Eric Bryant
 Mr. John R. Stafford
 Dr. & Mrs. Michael A. Statnick
 Mr. Kent Steele
 Mr. David B. Steiger &
 Dr. Elizabeth J. Galbreath
 Mr. James L. Stevens &
 Susan Jaken
 Miss Shelley Stewart
 Dr. Mary P. Stickelmeyer &
 Dr. Henry A. Havel
 Mr. & Mrs. John Stimson
 Mr. Richard A. Stocker &
 Ms. Randi L. Stocker
 Ms. Lillian G. Stokes &
 Mr. Robert Stokes
 Dr. & Mrs. Thomas Stolz
 Ms. Joy Stueky
 Mr. Ben Sturm
 Mr. T.S. Sun
 Mr. Tim Taflinger
 Mr. & Mrs. Norman H. Terando
 Ms. Linda M. Thornton
 Ms. Penny G. Threlkeld &
 Mark A. Mulhauser
 Mr. & Mrs. Edgar A. Towne
 Mr. Greg L. Turner
 Dr. Nancy M. Turner
 Mrs. Virginia M. Tyler
 Ms. Eloise Valinet
 Dr. & Mrs. Cornelis Van Der Schans
 Mr. Pat Van Valer
 Dr. Rebecca Van Voorhis
 Mr. Richard N. Vance
 Mr. Frank T. Vaughn
 Dr. William C. Vladuchick
 Mary Jo & David L. Wagner
 Mr. Todd K. Walker &
 Ms. Dixie Bibb
 David & Betty Lou Walsman
 Marsha Webster
 Dr. & Mrs. Michael Weeks
 Mr. & Mrs. Peter Wegner
 Mr. David M. Weir
 Ms. Natalie Weir
 Ms. Kathryn L. Weirick
 Mr. Keith A. Weisenberger
 Carol A. Weiss
 Mr. & Mrs. Leo Weitzman
 Mr. & Mrs. William F. Welch
 Ms. Mary E. Welter
 Ms. Sydney J. Wenzler
 James & Shirley Whitman
 Ms. Carol A. Whyde
 Thierry H. Wilbrandt
 Mrs. Sharon A. Willen
 Mr. John Wilms
 Mr. & Mrs. Bob Wilson
 Mr. Thomas A. Wilson
 Mr. James B. Winner
 Mr. & Mrs. Betty J. Wise
 Mr. & Mrs. Mark A. Wise
 William Wittchger
 Dr. Marianne S. Wakeck &
 Dr. Peter M. Harris
 Mr. Carter Wolf & Mrs. Kim M. Gattle
 Mr. & Mrs. James G. Wolf
 Ms. Susan L. Woodling
 Rev. & Mrs. Brent Wright
 Mr. & Mrs. David P. Wright
 Mr. & Mrs. Terence T. Yen
 Dr. & Mrs. Ronald L. Young
 Mr. Joseph R. Zborowski
 Mr. & Mrs. Mark Zelonis
 Mrs. Lois M. Zentner
 Mr. & Mrs. Randy Zentz
 Mr. Gerald W. Zimmerman
 Mr. & Mrs. Alan Zimmermann

\$350 - \$499
 Mr. & Mrs. Mark E. Abernathy
 Ms. Ashok Acharya
 Mr. & Mrs. Stephen Ackmann
 Ms. Sharon S. Adams
 Mr. & Mrs. John Ahrens
 Ms. Janet Albitz
 Mrs. Barbara F. Alexander
 Mr. & Mrs. Homer J. Allen
 Ms. Debra Allen
 Ms. Kathleen M. Allen
 Dr. Robert J. Alonso &
 Dr. Deborah C. Givan
 Ms. Teresa Altemeyer
 Richard W. Alvey
 Ms. Kimberly Anderson
 Dr. Carl B. Anderson
 Mr. Kwadwo Anokwa
 Don B. Ansel
 Mr. & Mrs. George Antony
 Mr. & Mrs. Monte M. Archer
 Mr. & Mrs. Robert A. Archer
 Mr. Thomas Asbury
 Mr. & Mrs. Brent A. Auberry
 Ms. Karen L. Ault
 Ms. Gloria J. Ault
 Mrs. Mindy J. Baas
 Mr. & Mrs. Howard G. Baetzhold
 Ms. Halle Bailey
 Mrs. Arthela B. Bailey
 Mrs. Barbara A. Baker
 Ms. Rebecca S. Baker
 Mrs. Verdell A. Baker
 Dr. Douglas W. Balogh &
 Dr. Deborah W. Balogh
 Mrs. Melody S. Barber-Hence &
 Mr. Ricky D. Hence
 Mr. Michael J. Barker
 Mr. Hugh A. Barker
 Mr. & Mrs. Charles Barnett
 Mr. & Mrs. Norman Barnett
 William Barrett
 Mrs. Annette Bashan
 Mr. Matt H. Bassett & Ms. Susan
 C. Cassada
 Mr. Joseph C. Bates &
 Dr. Mary Louise B. Bates
 Mr. Stephen L. Baughan
 Mr. & Mrs. Brandon J. Beasley
 Mr. & Mrs. Jim W. Beatty
 Ms. Anne E. Becker &
 Mr. Carl R. Pebworth
 Ms. Denise Beckwith &
 Mr. James E. Beckwith
 Donita Bell
 John Belling
 Mr. Kenneth Benbow
 Ms. Nancy J. Bennett &
 Dr. Lawrence E. Bennett
 Ms. Rebecca Berfanger
 Ms. Barbara G. Bernhard
 Miss Betty Beverly
 Mr. & Mrs. Lee Billings
 Mrs. Ruth Bishop
 Leona J. Blake
 Michael & Mary Blanchet
 Mr. Ramiro Blanco
 Mr. Tom G. Bogenschutz
 Mr. & Mrs. Charles Boll
 Mrs. Mary T. Bookwalter
 Douglas E. & Meg V. Born
 Mr. Michael C. Borschel &
 Rev. Audrey L. Borschel
 Martha Boughton
 Ms. Kris Bowen
 Earl Bowles
 Mr. & Mrs. John Boyd
 Mrs. Mary Ellen Boyle
 Nancy & David Braun

Ms. Jeanine L. Bray
 Mrs. Jennifer Breeze
 Ms. Ashok Acharya
 Ms. Peggy E. Breidenbach &
 Dr. Gregory R. Wahle
 Mr. Bernie Bright
 Ms. Theresa A. Brnicky
 Mr. Paul Brock
 Mr. Michael A. Brogdon
 Mr. & Mrs. Charles R. Brooks
 Thomas L. Brooks Jr
 Christine & Robert Broughton
 Ms. Alice W. Brown
 Patrick Brown
 Mr. W. Brown
 Mr. & Mrs. John Brown
 Mr. & Mrs. Alan S. Brown
 Mrs. Michele S. Brown
 Martha & Aaron Brown
 Natalie & Wally Bruner
 Mr. Martin A. Brungard
 Mr. & Mrs. Kevin E. Buehner
 Mr. William Bunting
 Mr. Joseph L. Burch
 Mrs. Cleo A. Burgard
 Mr. & Mrs. Daniel J. Burke
 Ms. Lorene M. Burkhart
 Tracey Burnett
 Ruth Burton
 Mrs. Rowena R. Bush
 Daniel Butler
 Mr. & Mrs. Mark P. Butler
 Mrs. Odetta Cadwell &
 Mr. Robert G. Cadwell
 Mr. Jeff Callahan
 Mr. & Mrs. G. Bruce Cameron
 Mrs. Cecilia E. Campbell
 Ms. Sandra Campbell
 Ms. Monica Canganelli
 Mr. Michael Canine
 Ms. Paula F. Cardoza
 Mr. & Mrs. Peter Caric
 Ms. Katharine M. Carr
 Mr. Charles E. Carroll
 Mr. John Carter
 Mrs. Loma Chalfant
 Mr. & Mrs. John B. Challman
 Mr. Floyd P. Chamberlin
 Donna Chamby
 Mrs. Debora J. Cheek
 Mr. Peter Chen
 Ms. Scholasticah M. Chigemo
 Mr. Walter Christie
 Mr. John C. Clark
 Mr. John Clark
 Dr. & Mrs. Robert T. Clayton
 Mr. Daniel R. Clendenning &
 Miss Hilary Clendenin
 Mr. Monte L. Coate
 Mrs. Kathryn Cofield
 Mr. & Mrs. Michael Cohen
 Mr. Chris J. Cohenour &
 Dr. Kathleen C. Cohenour
 Lisa M. Coleman
 Mr. John Collier
 Christine Colman
 Mr. George A. Colombo Sr
 Mr. Steve Connor
 Dr. & Mrs. Robin G. Cooper
 Mr. & Mrs. William E. Corley
 Raymond & Sandra Cortez
 Mrs. Linnie C. Cosby
 Mr. James D. Cox
 Diane & Jeffrey Crabtree
 Mrs. Jamie Craddock &
 Mr. Derryl A. Craddock
 Matthew & Lesley Crane
 Mrs. Evelyn L. Crawford
 Dr. & Mrs. James P. Crawford
 Ms. Delphia E. Croft

Mr. & Mrs. Robert W. Crooks
 Rose M. Crow
 Mr. & Mrs. Daniel A. Cunningham
 David Cunningham
 Ms. Melissa Curtis
 Dr. John Custer & Dr. Pat Custer
 Mrs. Marcia Cybul
 John & Bea Dahl
 Judy Dalton
 Ms. Jayme Daniell
 Mr. & Mrs. Alan J. Dansker
 Ms. Lucille C. Darnell
 Tina S. Daugherty
 Ms. Kammy E. Dawson
 Dr. & Mrs. Mark A. Deeg
 Mrs. Audrey Delk
 Mr. & Mrs. James H. Dempsey Jr.
 Mrs. Tyra Dennis
 Mr. & Mrs. Gerald A. Denys
 Ms. Janet Deprin
 Ms. Rita M. Deruntz
 Mr. & Mrs. Chuck I. DeSouchet
 Ms. Hannah Desrosiers
 Mr. & Mrs. Stephen E. DeVoe
 Mr. John Dichtl & Dana M. Ohren
 Ms. Denise Dickson &
 Mr. Dennis L. Dickson
 Mr. Tim Dickson & Dr. Kristi Dickson
 Mr. & Mrs. Lewis Dickson
 Ms. Cathleen S. Dionne
 Ms. Yolanda Dixon
 Ms. Elaine Dorwart
 Mr. Dan Du Angelo
 Ms. Amy V. Dugan
 Mr. & Mrs. John DuMond
 Dr. Sabrina S. Duncan &
 Mr. Ronald N. Duncan
 Mr. Paul F. Duncan
 Mr. Jerry L. Dunn
 Theresa Dunn
 Ms. Pamela L. Dyckhoff
 Dr. & Mrs. Craig R. Dykstra
 Mrs. Marilyn B. East
 Mr. Kim Ebert
 Mrs. Norma Lee L. Eckert
 Mr. Daniel G. Edelman
 Ms. Esther E. Edwards
 Mrs. Gloria Edwards
 Robert E. Einstein
 Mr. Fred W. Ellis
 Mr. John Elmer & Mr. Robert J. Elmer
 Mr. Charles M. Emmerd
 Ms. Nora R. Enyart
 Mr. Edward J. Erpelding
 Mr. David Ervin
 Miss Veronica Erwin
 Mr. & Mrs. David N. Eskenazi
 Catherine & Richard C. Evers
 Mr. Thaddeus Ewald
 Lynda Fagel
 Maurer Family Foundation
 Dr. & Mrs. Mark O. Farber
 Mr. & Mrs. Ross Faris
 Mrs. Elizabeth Farr
 Tom & Linda Farrell
 Mrs. Anita M. Farrell
 Ms. Carol J. Feeney
 Ms. Jo Ann R. Feltrinelli
 Jane Fergner
 Mrs. Karen Field
 Ms. Selena L. Fildes
 Mrs. Shirley Filler
 Mr. & Mrs. Mathew J. Fisher
 Mrs. Rebecca L. Fisher
 Mrs. J Diane Fisk-Phillips
 Ms. Beverly Fleming
 Ms. Kathy Fleschner
 Jane A. & Richard Flis

Ms. Dianne Flynn
 Ms. April Flynn
 Ms. Michelle Falz
 Mary K. Foote Morris & Tim T. Morris
 Patricia M. Foreman
 Rachelle S. Forrest
 Mr. & Mrs. Richard B. Foster
 Sharon Foster
 Ms. Linda Foster
 Mr. & Mrs. Jim Fowler
 Mrs. Laura A. Francis
 Mrs. Ramona J. Frazee
 Mr. Sam Frazer
 Mr. & Mrs. Ed Free
 Ms. Debra L. Freeman
 Rebecca K. Freimuth
 Ms. Susan M. Frey
 Mrs. Nancy S. Frias
 Jim & Sally Friend
 Mr. & Mrs. John M. Fritch
 Mr. & Mrs. David T. Fronek
 Mr. Brian E. Frost &
 Ms. Julianne Frost
 Mr. & Mrs. Morgan Fulton
 Mr. David Fulton
 Jim & Janis B. Funk
 Mr. Richard L. Funkhouser
 Mr. James Furfuro Sr.
 Beverly Gallagher
 Ms. Marilyn J. Gamblin
 Mr. Thomas Gannon
 Ms. Budinia Gant
 Ms. Jackie M. Gardner
 Ms. Donna L. Garland
 Mr. Chris Gartrell
 Mr. & Mrs. William J. Garvey
 Miss Jeanne Gast
 Ms. Rhonda L. Gatzke
 Ms. Lisa A. Gaus
 Ms. Susan K. Gaylor
 Mr. Lloyd W. Gaylord
 Ms. Roberta Gellis
 Mrs. O. J. Gemmecke
 Joan L. George
 Ms. Barbara George
 Mr. Rex A. Gibbs
 Miss Pansy M. Girtan
 Mr. Gordon B. Gish
 Mrs. Mary Anne Gladden
 Mr. Richard O. Glendinging
 John Goebel
 Mrs. Sherry K. Gore
 Ms. Virginia L. Goss
 Mabel Grafte
 Mrs. Josephine Gratien
 Mr. & Mrs. Dale Graves
 Ruth Gray
 Mr. Craig Greathouse
 Mrs. Robyn M. Green
 Dr. & Mrs. Jeffrey Greenberg
 Mrs. Kris J. Greene
 Ms. Emily W. Greenland
 Grace A. Gresham
 Dr. Carl Grothouse
 Mrs. Karla G. Guevara
 Mr. & Mrs. Norm W. Gully
 Belinda & Ed Gutwein
 Mr. Herman P. Haas &
 Ms. Kathy J. Slusher-Haas
 Ms. Laura E. Haehl &
 Ms. Gretchen J. Haehl
 Mrs. Marianne Hahn
 Mr. & Mrs. Thomas P. Haines
 Dr. & Mrs. John E. Hale
 Ms. Diana Hall
 Jean A. Hall
 Mr. Fred S. Hallett Jr
 Mr. & Mrs. William D. Hamaker
 Mrs. Alice Hammond

Ms. Linda Handy
 Mr. & Mrs. Allan L. Hanft
 Mr. Joseph Hanley
 Mr. James A. Hanna
 Deanna F. Hanson
 Mr. & Mrs. Donald Harmon
 Mrs. Sue Harmon
 Dr. Lisa E. Harris
 Dr. & Mrs. Robert A. Harris
 Mrs. Barbara Harris
 Ms. Wanda Harris
 Miss V. Diane Harrison
 Ms. Michelle E. Hartman
 Mr. Dale Harvey
 Mr. Tom Havens & Ms. Nancy Havens
 Steven & Xiaohua He
 Winston D. Hehnheis
 Mr. John Helming &
 Mrs. Mary A. Helming
 Mr. Erik J. Hembre &
 Ms. Katherine M. Howe
 Mrs. Barbara N. Hemsley
 Ms. Jamie L. Hendershot
 Mr. Greg H. Henderson
 Mrs. Patricia Henderson
 Ms. Sandra Hendrickson
 Mr. & Mrs. Carl W. Henn, Jr.
 Dr. & Mrs. Matthew J. Henry
 Ms. Jill E. Henry
 Mary M. & Brett Hesse
 Mrs. Charlotte Hickman
 Mr. & Mrs. Matthew Hilton
 Mr. & Mrs. Clarence A. Hirsch
 Mrs. Mina Hizonza
 Ms. Narcissa D. Hocker
 Ms. Naomi A. Hocker
 Ms. Sandy Hocker
 Mr. Milton Hodge
 Mr. Albert F. Hohl
 Mr. & Mrs. Hoke
 Marcus & Kathryn Holcomb
 Mrs. Patricia Hollandsworth
 Mr. & Mrs. Richard E. Holmes
 Pamela Holt
 David W. Hood
 Dr. & Mrs. Michael E. Horn
 Mr. & Mrs. Don Hornback
 Ms. Aileen W. Howard
 Ms. Barbara A. Howard
 Keith T. Huff
 Dr. & Mrs. Meredith T. Hull
 Mr. Charles B. Hume
 Larry E. Humes
 Mr. Stephen Hunt
 Mr. David Hunt Smith
 Henry H. Huntsman
 Mr. Richard Huntzinger &
 Ms. Cheryl Huntzinger
 Opal Hurley
 Ms. Rosemary Hurst
 Martin & Lynn Hynes
 Mrs. Karen J. Hywood &
 Mr. Jared M. Thomas
 Ms. Nancy S. Inui &
 Dr. Thomas S. Inui
 Mr. Kenneth Irwin
 Mr. Ronald R. Jerge
 Ms. Nancy Jozyk &
 Mr. Dale E. Greenwood
 Mrs. Geraldine F. Johnson
 Ms. Stephanie S. Johnson
 Mr. Bruce N. Johnson &
 Ms. Linda Johnson
 Ms. Cheryl L. Johnson
 Mr. & Mrs. Peter Johnson
 Mr. Robert A. Johnson
 Mrs. Susan Johnson
 David Johnston
 Dr. & Mrs. C Conrad Johnston

2009 LEADERSHIP GIVING TO WFYI

Ms. Margaret R. Jones
 Dr. & Mrs. Christopher S. Jones
 Mr. & Mrs. Michael Jordan
 Ms. Melodie A. Judd
 Ms. Sunday A. Kaerner
 Mr. & Mrs. Rahul Kapur
 Mr. Ted Kasting
 Mr. & Mrs. John A. Katterjohn
 Ms. Wendy Keller & Mr. Jim Keller
 Mr. Paul Kelley-Jones
 Leslie Kelly
 Mr. & Mrs. William Kemle
 Ms. Sharon Kendall
 Dr. Vasiliki Keramida
 Dr. Srinivasu Kesa &
 Mrs. Yamini Pothur
 Dr. Quay Kester
 Mr. & Mrs. Vince A. Kiger
 Mr. & Mrs. Jim M. King
 Dr. Lucy Jane King
 Mr. & Mrs. Ross J. King
 Mr. Thomas Kinney
 Mr. & Mrs. Tom Kirk
 Mrs. Carolyn J. Kirkendall
 Nichole B. Kloehn
 Mr. Michael H. Knops
 Mr. & Mrs. James Kraft
 Mr. Dan Kraft
 Mrs. Emi L. Krekiau
 Miss Marjorie Kroeger
 Mrs. Ardith L. Krug
 Ms. Uma Kuchibhotla &
 Mr. Muppalla Sukumar
 Mr. Gerry C. LaFollette &
 Mrs. Susanne LaFollette
 Dr. James Lalonde
 Ms. Julie Lambert
 Dr. & Mrs. Ned Lamkin Jr.
 Ms. Dorothea Lancaster-Raine
 Ms. Teresa Landgren
 Joe Lapp
 Dr. Antoinette L. Laskey &
 Mr. James G. Laskey
 Ms. Elizabeth A. Lee &
 Dr. Stephen P. Bogdewic
 Sue & Herman A. Leonard
 Dr. Sue A. Leuschke
 Mr. & Mrs. Howard Levitin
 Mr. Lee Lewellen
 David V. & Joan C. Lewis
 Mr. Paul E. Lewis
 Mr. Carl Lienhoop &
 Ms. Deborah Lienhoop
 Ms. Patti Lilley
 Russell C. & Cynthia K. Lilly
 Ms. Constance R. Lindman
 Dr. Daisy Lloyd
 Ms. Sheila Lomax
 Ms. Nikia Lopeman
 Mr. Dave Love Jr.
 Mr. Paul Ludwig
 Mr. & Mrs. Michael Lynam
 Mr. & Mrs. William Macias
 Mr. John C. Mackell
 Mr. & Mrs. Richard W. Mackey
 Ms. Rebecca B. Madara
 Lester L. & Tam Maines
 Mr. & Mrs. Eugene Malasics
 Mr. & Mrs. Greg Malone
 Mr. Willes Malone
 Mr. & Mrs. David A. Malson
 Mrs. Cristina Man
 Mr. Joseph P. Marbaugh
 Mr. Donald E. Marsh Sr.
 Mr. & Mrs. William E. Marsh
 Ms. Bren Marshall
 Dr. Matthew Martin &
 Mrs. Stephanie Martin
 Ms. Jody Martin
 Mr. & Mrs. Steve E. Maschmeyer
 Mrs. Editha Masters
 Regina E. Masters
 Mr. & Mrs. Brent Matthews
 Ms. Veronica P. Matthews
 Rebecca Maxfield
 Mr. & Mrs. John J. Maxwell
 Mr. & Mrs. Dann Mayo
 Cherie L. Mcbollum
 Dr. Angela B. McBride &
 Dr. William L. McBride
 Mr. & Mrs. & Mrs. James McCain
 Russell McCleery
 Ms. Jo Ann McCollum
 Ms. Anne McDaniel
 Mrs. Jennifer McDuffee
 Ms. Kathleen McGaughy
 Mr. Philip McGeath
 Ms. Dayna L. McGinley
 Mr. & Mrs. Kevin P. McGoff
 Mr. & Mrs. Tim McGuire
 Ms. Barbara L. McKee
 Mr. & Mrs. Patrick McKenney
 Mary W. McKinley
 Ms. Mary W. McLaughlin
 Mrs. Astrid U. McLean &
 Mr. Keith O. Hamm
 Kevin P. McLinn
 Jo Ellen McMahon
 Ms. Christine McNeil
 Mrs. Terre McNutt
 Ms. Heather McPherson &
 Mr. Malcolm Smith
 Mr. Jeffrey T. McReynolds &
 Ms. Helen Weber-Mcreyn
 Ms. Melanie Mechem
 Mrs. Mary T. Melton
 Mr. Gary C. Meltzer
 Dr. Dustin J. Mergott &
 Dr. Julia M. Clay
 Dr. & Mrs. Henry S. Merrill
 Dr. Susan J. Meyer
 Ms. Marty Miles & Mr. Jim Olson
 Mr. John M. Miles
 Mrs. Marcia Miles
 Mr. Wilton W. Miller
 Ms. Rose A. Miller &
 Mr. Thomas Miller
 Mr. & Mrs. Larry Miller
 Chris & Doug Miller
 Ms. Sharon K. Miller
 Mr. Lester C. Miller &
 Ms. Amy D. Olson
 Pat Milligan
 Mr. & Mrs. Ronald E. Mincy
 Mary M. Mingle
 Mrs. Rebecca Minnear
 Dr. & Mrs. Charles H. Mitch
 Francis Mitchell
 Mr. Russell Mobley
 Ms. Carolyn A. Mock
 Ms. Karen F. Monaghan
 Linda Montag-Olson & Ronald Olson
 Mrs. Jennie K. Moore
 Mrs. Linda M. Moore
 Ms. Dawn Moore-Dixon
 Ms. V. Lynn Moran
 Mr. & Mrs. D. William Moreau Jr.
 Mr. Jack P. Morgan
 Ms. Sally T. Morlan
 Mr. James T. Morris &
 Mrs. Jackie Morris
 Ms. Joann Morris
 Dr. & Mrs. Dan Moseley
 Dr. & Mrs. James G. Moseley
 Mr. Rollin Mosher
 Mr. James B. Mowry &
 Ms. Judith Jacobi
 Daoue Baoud B. Mshaka
 Mr. William L. Mullin
 Ms. Judith B. Murphy
 Mrs. Roberta J. Murphy
 Ms. Melma A. Murray
 Mr. Joe Myers
 Mr. James Myers
 Ms. Susan A. Naanes
 Miss Debbie J. Neal
 Dr. & Mrs. Marvin A. Needler
 Mr. David Needler & Mrs. Abby
 Needler
 Mr. & Mrs. James A. Negro
 Nehamkin Family &
 Mrs. Ivy L. Nehamkin
 Ms. Lisa Neill
 Mr. & Mrs. David L. Nelson
 Mr. & Mrs. Jeffrey M. Nicholls
 Dr. Steven W. Nichols &
 Dr. Katie A. Stanton
 Mrs. Kietia D. Nichols
 Mrs. Clara Nicholson
 Ms. Connie Nix
 Mr. & Mrs. Jordan D. Nuger
 Mr. & Mrs. Samuel L. Odle
 David & Sheila Ogden
 Mr. George Okantey &
 Ms. Joyce M. Okantey
 Ms. Linda Oliphant
 Patricia Oman
 Donna Oaley
 Mr. Donald Orr &
 Ms. Caryl M. Thompson
 Mr. & Mrs. Robert H. Orr
 Mr. & Mrs. Greg M. Otolski
 Jerry & Judy Ottinger
 Mr. & Mrs. Mark T. Owens
 Mr. & Mrs. Lance S. Oxley
 Ms. Kimberly Oylar
 Mr. Guy E. Pahud
 Ms. Bina Pais
 Aurora R. Palacio
 Ms. Lisa Parker
 Mr. Gary J. Parker
 Barbara J. Parker
 Mr. & Mrs. Al Parsons
 Ms. Christine Paszkiet
 Mr. Vijay Patel
 Katherine R. Patrick
 Alice B. & George D. Patterson
 Ms. Sylvia M. Payne
 Mrs. Mary Paynter
 Mrs. Jeanine F. Pearcy
 Mr. John C. Peer
 Mr. & Mrs. Richard B. Peglow
 Mr. & Mrs. Louis J. Pellegrino
 Mr. & Mrs. John Pelton
 Mrs. Glenna Penton
 Mr. & Mrs. William F. Perkins
 Ms. Jodi F. Perras
 Mrs. Margaret J. Perryman
 Mr. & Mrs. Curtis Peters
 Dr. Laryn A. Peterson
 Mrs. Jean M. Petranoff
 Mr. William Pfeifer
 Warren & Mildred Phipps
 Rev. Karen E. Pitt & Mr. John Pitt
 Mrs. Pamela J. Planker
 Mr. Melvin Pleiss &
 Mrs. Judith Pleiss
 Mr. & Mrs. Don Plesner
 Dr. & Mrs. John Pless
 Mr. & Mrs. John Poehler
 Ms. Lori Poole
 Mr. Delmar L. Potter
 Mr. Richard W. Prather
 Mr. & Mrs. J. Howard Pratt
 Paula Presnoples
 Ms. Florence V. Pulsifer
 Ms. Valerie A. Purvin
 William J. Quest & Diane Johnson
 Mr. & Mrs. Roger M. Radue
 Mrs. Heather A. Ramey
 Ms. Janet M. Ransom
 Mr. & Mrs. Thomas Read
 Ms. Linda Reddington
 Richard Reed
 Mrs. Joni A. Reed
 Matt Rees
 Ms. Chris Remley
 Dr. Kenneth L. Renkens Jr.
 Mrs. Dorothy M. Resneck
 Miss Angela M. Rehmeier
 Nola F. Rettig
 Dr. & Mrs. Doug K. Rex
 Ms. Donna L. Reynolds &
 Mr. David P. Whitman
 Mr. Arthur Rhodes
 Edward G. & Maggie C. Richardson
 Mr. & Mrs. David L. Richardson
 Marvin R. Richardson
 Mr. Lamar Richcreek &
 Ms. Jean Richcreek
 Mary Ann Rickert
 Martha Riddle
 Mrs. Pamela Riedl
 Peggy A. & John T. Rinehart
 Mr. Michael W. Risinger
 Ms. Mary E. Ritter
 Mrs. Pam Robbins
 Joseph G. & Leanna Roberts
 Mr. & Mrs. Michael J. Robinson
 Mr. William R. Robinson &
 Ms. Carol Robinson
 Mrs. Danielle R. Robinson
 Dr. & Mrs. Robert D. Robinson
 Sherri D. Rodriguez
 Mrs. Patty Roesch
 Mary Roesinger
 Ms. Florence W. Roisman
 Mrs. Judith Roland
 Mr. Robert D. Roler
 Mr. David Rolfes
 Ms. Cathleen L. Rooney
 Ms. Mercedes Roots
 Mr. & Mrs. Steve W. Rosenbaum
 Mr. and Mrs. Steve Ross
 Mr. Jeffrey Rumpza
 Mr. Mike J. Runnbohm
 Steve & Mag Russell
 Mr. & Mrs. Robert K. Ryan
 Mr. Robert Rydell &
 Ms. Susan M. Rydell
 Sagamore Institute
 Mrs. Mary Salisbury
 Mrs. Halerie E. Sandala
 Dr. Scott J. Savader &
 Dr. Barbara L. Savader
 Mrs. Beverly Savage
 Mrs. Jeanette Sawi
 Mrs. Christy L. Saydjari
 Carolyn M. Schaefer
 Mr. Charles E. Schalliol &
 Mrs. Jenny Schalliol
 Mr. Juergen F. Schallwig
 Mr. Michael Schildmier
 Allaire Schlicher-Beutner
 Ms. Roberto A. Schmidt
 Mr. Walter Schneider &
 Dr. Brigitte E. Schoner
 Dr. Paul G. Schoon &
 Dr. Susan C. Schoon
 Rebecca & Dennis Schroeder
 Mr. & Mrs. H. T. Schulhof
 Ms. Marilyn F. Schultz
 Dr. John B. Scofield
 Ms. Rosemary Scott
 Warren Scott Stamper
 Mr. Charles D. Sears
 Mr. Tom Sedletzck
 Mrs. Jina F. Segovia
 Mrs. Anne Sering
 Laura W. Sexson
 John & Lois Shafer
 Mr. Rajesh K. Shah
 Mr. & Mrs. Michael P. Sharp
 Theresa Shater
 Mr. Anthony Shemezis
 Ms. Susan I. Shepherd
 Mr. & Mrs. David A. Shircliff
 Ms. Gina R. Shockley
 Ms. Kathleen Shortridge
 Mr. Walter A. Shorts
 Mr. Norman Shoultz
 Kirk & Donna Shryock
 Mr. Ashwin Shukla
 Ms. Mary Jane Sievers
 Mr. & Mrs. Mark Simmons
 Mrs. Catherine R. Simmons
 Mr. & Mrs. Robert B. Simpson
 Mr. & Mrs. Michael P. Skehan
 Mr. & Mrs. Jack V. Skillman
 Mr. & Mrs. Richard Skooglund
 Mr. Eric D. Slessinger
 Ms. Andrea H. Smiley
 Darrell E. & Sherri B. Smith
 Dr. & Mrs. James W. Smith
 Ms. Joyce K. Smith
 Mr. & Mrs. William C. Smith
 Mr. & Mrs. Richard H. Snodgrass
 Mr. & Mrs. Delbert L. Snyder
 Thomas & Bobbette Snyder
 Mrs. Nancy J. Snyder
 Mr. & Mrs. Dennis Sorge
 Richard & Nancy Spahr
 Mr. & Mrs. Edward L. Spahr
 Mr. & Mrs. J. Richard Sparks
 Mrs. Audrey M. Spear
 Mrs. Rhonda Sprague
 Christine A. & Steven J. Sproull
 Jeff Stafford
 Susan M. & Joe Stapleton
 Rev. James Starr
 Mr. & Mrs. Phil Stegemoller
 Ms. Linda Stemshorn
 Mrs. Suzanne Stiene
 Dr. Barbara Stilwell &
 Dr. Ramon S. Dunkin
 Mr. Kevin D. Stokes
 Ms. Wendy Stoots
 Dr. Diane R. Stothard
 Mr. Jeff Stouder
 Mrs. Peggy A. Stout
 Mr. & Mrs. Thomas Strauss
 Mr. & Mrs. John E. Striewe
 Reinhold M. & Margaret M. Strnat
 Mr. Andrew E. Stuckey &
 Mrs. Elizabeth W. Spalt
 Mr. Mike Sullivan
 Mr. & Mrs. Jeremiah Sullivan
 Mr. Jacob T. Sumner
 Mrs. Eleanor G. Suscha
 Ms. June K. Swango
 Mr. & Mrs. William Swigert
 Thomas Taylor
 Ms. Theresa A. Taylor
 Sharon S. Taylor
 Mr. & Mrs. David G. Taylor
 Mrs. Diana Tedder
 Mr. & Mrs. Eldon Terrell
 Ms. Theresa D. Tetrault &
 Mr. Todd G. Tetrault
 Ms. Joyce Thayer
 Mr. Gary V. Thevenow
 Ms. Brenda Thomas
 Jesse L. Thomas
 Ms. Sandra Thompson
 Ms. Janie Thornton
 Mr. & Mrs. James Thuroau
 Mrs. Eleanor Thurston
 Mrs. Floreana B. Tinsley
 Mrs. Janice M. Toft
 Ms. Lynn A. Tofts
 Mr. & Mrs. John L. Tompkins
 Mr. & Mrs. James W. Torke
 Ms. Jennifer Toscano
 Mr. & Mrs. Fred O. Towe
 Mr. Thomas F. Townsend
 Mr. & Mrs. William Trakimas
 Mr. & Mrs. Albert Trevino
 Ms. Catheryn Troiano
 Mr. James W. Tucker
 Dr. & Mrs. Michael A. Turik
 Mrs. Cathy M. Tygart
 Mr. Lawrence R. Ulrich
 Mr. & Mrs. John L. Vahle
 Mrs. Martha D. Valdettaro
 Eloise I. Valinet
 Dr. Michael Veenhuizen &
 Mrs. Melissa Veenhuizen
 Mrs. Pamela M. Velo &
 Dr. Steven R. Richwine
 Mr. & Mrs. Michael Velman
 Miss Linda J. Vickery
 Dr. Louis Vignati &
 Ms. Ruth M. Vignati
 Mr. Geoffrey A. Vonburg
 Dr. & Mrs. Paul Waitt
 Mr. Philip Walden
 Mr. Douglas Walker
 Ms. Charlotte Walker
 Jack T. Walker
 Ms. Linda S. Wallace
 Mr. & Mrs. Donald Walsh
 Ms. Evelyn K. Walter
 Mrs. Ada F. Walters
 Mr. Jack Warble
 Mrs. Eunice A. Ware
 Dr. Kathleen Warfel
 Mr. Carl Warner
 Mr. & Mrs. William O. Warren
 Ms. Joan M. Warrick
 Mrs. Marie Z. Warshauer
 Sarah W. & Stanley Wasserman
 Mrs. Charlotte Watson
 Ms. Rosanne N. Watson
 Mrs. Nancy Watson
 Mrs. Trilby Watson
 Lloyd Weaver
 Mr. John F. Webber
 Thomas P. & Becky A. Weber
 Mr. & Mrs. Kenneth Weeks
 Amy M. & Donald N. Wentworth
 Mrs. Barbara Wever
 Alan & Elizabeth Whaley
 Mrs. Charity Wheeler
 Mr. James J. Wheelchel
 Ms. Lisa A. Whittaker &
 Mr. Jeffrey A. Whittaker
 Sharon J. White
 Mrs. Patty Wickliff
 Ms. Annie Wilburn
 Mrs. Barbara Wiley
 Mr. & Mrs. Scott Wilkerson
 Mr. & Mrs. Windford L. Williams
 Angela Williams
 Ms. Domeneque E. Williams
 Ms. Dorothea Williams
 Mrs. Betty Williams
 Mr. Kenneth A. Williams
 Mr. Robert T. Williamson
 Ms. Virginia Z. Willkie
 Mr. James Wills
 Mr. & Mrs. Daniel T. Wilson
 Mr. & Mrs. Charles E. Wilson
 Mr. Cortney J. Wilson
 Mr. & Mrs. David B. Wilson

2009 LEADERSHIP GIVING TO WFYI

Ms. Vicki L. Wilson
 Charles D. Wilson
 Mrs. Leonard Winchell
 Miss Lucia Wocial
 Mrs. Marion Wolen
 Dr. Christian K. Wolf &
 Mrs. Elaine J. Holden
 Lori L. & Vincent J. Wong
 Mr. & Mrs. Paul Wood
 Mr. Harry A. Wright
 Mr. Walter E. Wright
 Dr. James C. Wright Jr.
 Ms. Viola Marie Wright
 Linda Wright
 Mr. & Mrs. Yiting Robert Yang
 Mr. Doug Yaticilla
 Mr. Thomas O. York
 Ms. Genevieve York
 Mr. David M. Zalewski
 Mr. John M. Zanetis
 Bin Zhang & Xiaoyan Rao
 Dr. Dawn M. Zimmer &
 Mr. William R. Adams
 Mr. David D. Zimmerman
 Mr. & Mrs. John F. Zimmerman
 Ms. Peg Ziperman
 Mrs. Dawn Zolnierak
 Mrs. Dee Zaok

\$250 - \$349

Dr. Hamid Abbaspour
 Mrs. Peggy L. Abbott
 Mr. Dennis M. Adams
 Mr. Scott Adams
 Mr. John A. Adolph
 Miss Tia M. Agnew &
 Mr. Brett A. Canaday
 Mr. & Mrs. C. Thomas Aguilar
 Mr. Jerry G. Albaugh
 Ms. Suzanne Aldridge
 Amy Alexander
 Mr. & Mrs. Walter K. Alfred
 Mr. David B. Allen
 Christine Altman
 Dr. Marta D. Alvarez
 Mr. & Mrs. Craig J. Anderson
 Joseph M. Anderson &
 Mary E. Keiser
 Mr. Scott E. Anderson
 Mr. & Mrs. Karl P. Anderson
 Mrs. Aline Anderson-Detmer
 Mr. & Mrs. Sarto Antao
 Mr. Thomas A. Anthony &
 Ms. Mary Kay Anthony
 Mr. David B. Aramant
 Mr. Donald W. Armstrong &
 Ms. Susan Armstrong
 Mr. & Mrs. Andrew J. Arnold
 Mr. & Mrs. Jonathan M. Arnold
 Ms. Pamela Ashlock
 Mr. Simon J. Atkinson
 Mr. & Mrs. Bernard Axelrad
 Teresa & John Ayres
 Michael L. & Suzanne L. Baach
 Mr. Prentice Bacon &
 Ms. Ellen J. Bacon
 Jenny Badenhop
 Mr. John C. Baenziger
 Ms. Donna Bahler
 Wilma Ann & Wilma Bailey
 Mr. & Mrs. Vernon Bailey
 Dr. Stephen K. Bailie &
 Mrs. Barbara Bailie
 Ms. Judith J. Baker
 Mrs. Thelma J. Baldwin
 Mr. R. L. Ballard
 Mr. Robert Ballard
 Ms. Marie Banaszak
 Mr. Morris Bank

Mr. & Mrs. Douglas S. Banning
 Mr. Harold L. Bannister
 Dr. Charles R. Bantz
 Ms. Lisa D. Barberio
 Gene & Jean Bardonner
 Ms. Carol A. Barnes
 Mr. Mark B. Barnes &
 Ms. Sharon M. Charbonneau
 Mr. & Mrs. Joseph F. Barnett
 Mrs. Ann Barr
 Mrs. Barbara Barr
 Mr. & Mrs. R. William Barrett
 Mr. John W. Bartle
 Mr. Thomas M. Barton
 Mr. Delbert Baston
 Mr. & Mrs. Robert Bates
 Ms. Joanne L. Bates
 Joseph W. & Anita Batza
 Virginia Bauer
 Mr. Rodney D. Baumgart
 Ms. Andra Baumgartner &
 Mr. Nicholas S. Ide
 Mr. & Mrs. Robert Baur
 Mrs. Barbara T. Beaton
 Mr. & Mrs. Terry A. Beaty
 Mary R. Beaty
 Mr. Larry D. Bechtel
 Mrs. Carol C. Beck
 Dr. Kathleen A. Beck-Coon &
 Dr. Robert J. Beck-Coo
 Mr. Ward Beckham
 Mr. & Mrs. Ken Beckley
 Mr. Daniel M. Bedwell
 Dr. & Mrs. Ralph K. Bedwell
 Dr. & Mrs. Steven C. Beering
 Mrs. Marilyn W. Bell
 Mr. & Mrs. John C. Bell
 Ms. Mary C. Bell &
 Mr. Nathan C. Bell
 Ms. April J. Bell
 Mr. David A. Bellman &
 Mrs. Ingrid E. Fischer-Bell
 Mr. & Mrs. Neil Bemenderfer
 Ms. Pamela J. Bennett
 Mr. & Mrs. Patrick J. Bennett
 Mr. Robert M. Benson
 Mr. & Mrs. Richard Bergdahl
 Gene & Jane Beyt
 Ms. Deborah S. Bhagwandin
 Ms. Florence K. Bien
 Mr. Don Bievenour &
 Mrs. Ginger Bievenour
 Mr. Brad W. Bihl
 Dr. Christine Bishop &
 Mr. Hank Wong
 Mr. Wilber T. Bitler &
 Ms. Betty Jean Bitler
 Ms. Sarah E. Bixler
 Mr. Charles Black
 Mr. Thomas G. Blanchard &
 Ms. Elsie Blanchard
 Ms. Betsy A. Blanchard
 Mr. & Mrs. Gregory P. Blitz
 Dr. Ilene Block
 Ms. Janet S. Blocker
 Mr. & Mrs. Bill Blomquist
 Mr. Thomas C. Bloniarz
 Donald Bloom
 Mr. Jesse Bobbitt
 Mr. & Mrs. Kenneth J. Bochenek
 Tim & Timothy A. Boebel
 L. D. Boeck
 Ms. Jennifer R. Boehm
 Dr. & Mrs. Jeffrey A. Boester
 Ms. Anna D. Bogan
 Mrs. Tiffany L. Bogard &
 Mr. Micha W. Askelson
 Mr. & Mrs. Jay S. Bolden
 Mr. & Mrs. William C. Bonifield

Mr. James C. Bonnett
 Jimmie R. Boone
 Mr. James H. Booth &
 Ms. Megan E. Booth
 Mr. & Mrs. William Boothe
 Nancy Boots
 Ms. Mary E. Boren
 Mr. & Mrs. Bradley Borum
 Glenn A. & Bobbi S. Bosch
 Mr. G. Robert Boswell
 Barbara A. Bourbina
 Mr. Lynn A. Bowers
 Mrs. Cheryl L. Bowman
 Ms. Jean E. Bowman
 Dr. Ronald R. Bowsher
 Carter & Rebecca Boyd
 Mr. Byron S. Boyd
 Mrs. Kathy Boyle
 Mr. Ralph R. Bradley
 Mr. & Mrs. C. Harvey Bradley Jr.
 Mr. John I. Bradshaw Jr.
 Mrs. Christine Brady
 Scott Brady
 Dr. Richard E. Brashear &
 Ms. Harriet M. Ivey
 Dr. Sue Ellen Braunlin
 Mr. & Mrs. Carl E. Brehob
 John & Catherine Bridge
 Ms. Cathy Bridges
 Douglas I. Briggs
 Mrs. Sandra Brigham
 Mr. & Mrs. Larry G. Briles
 Ms. Kris K. Brittain &
 Ms. Midori Fujii
 Mr. & Mrs. Donald Broadlick
 Mr. Frederick Brockhurst
 Mr. & Mrs. Alan Brockman
 Mr. Stephen Brockmann
 Mrs. Irene Brody
 Mrs. Laurel N. Branson &
 Mr. Todd K. Rutledge
 Sarah Brown
 Clifford M. Brown
 Jeffrey J. & Helen Brown
 Mrs. Eleanor Brown
 Dr. Patricia L. Brown-Augsburger
 Ms. Alma L. Brownfield
 Mr. Hal Broxmeyer &
 Ms. Beth Broxmeyer
 Mrs. Rose Mary Bruce
 Mr. & Mrs. Neal A. Bruder
 Ms. Anita Brummett
 Ms. Nancy A. Bryan
 Bruce W. & Julie M. Buchanan
 Mr. Kenneth Buckwalter
 Ms. Lois M. Buell
 Mr. John Burgess
 Miss Lillian B. Burgner
 Mr. Derrick Burks
 Cassie Burnett
 Randy C. Burnison
 Mr. & Mrs. Kenneth Burns
 Elizabeth Burns
 Ms. Sherry J. Bush
 Mrs. Mary F. Bush
 Mr. & Mrs. Joseph Butler
 Mr. & Mrs. Robert Butler
 Ms. Jolynn B. Butler &
 Mr. Bill Butler
 Mr. & Mrs. Donald Buttrey
 Mr. Timothy W. Butz
 Paul E. & Betty Lou Byram
 Mr. Jack Byrum
 Mr. & Mrs. Mark P. Cain
 Ms. Mary Jane Caito &
 Mr. Francis J. Caito
 David J. Calvert
 Dr. Peter C. Campbell &
 Ms. Emily H. Sagor

Barbara Campbell
 Mr. Michael Campbell
 Ms. Edith A. Campbell
 Ms. Cindy L. Campbell
 Mrs. Judy Campbell
 Mr. Virgil Canfield
 Alice Cantonwine
 Mr. & Mrs. Donald G. Carlson
 Carmelite Monastery
 Mrs. Ellen M. Carmichael
 Rev. & Mrs. Joby Carmody
 Dr. & Mrs. Matthew D. Carr
 Mr. John R. Carr Jr.
 Dr. & Mrs. William B. Carr
 Ms. Mary L. Carter
 Ms. Burdellis L. Carter
 Dr. & Mrs. Donald Carter
 Mr. Michael Carter
 Vicki Carter-May
 Dr. & Mrs. Elmo B. Carver
 Mr. & Mrs. John Carvey
 Dr. Elizabeth A. Case
 Mr. & Mrs. Ross Castaneda
 Mr. Gregory R. Cataldi
 Mr. Frank Catanzarite
 Mr. & Mrs. David M. Cavanagh
 Mr. & Mrs. Chad Cerda
 Pat Chalkley
 Mr. & Mrs. Bill Chambers
 Ms. Julie E. Champagne
 Mr. E. Lynn Champion
 Mr. & Mrs. John Chandler
 Mr. & Mrs. R. Damon Chandler
 L. D. Chanley
 Ms. Dawn M. Charbonneau &
 Rob E. Hawks
 Mr. Bill Cherry
 Mrs. Alice V. Christian
 Mr. David Christie
 Wayne Circle
 Mr. & Mrs. Kim Cissell
 Mr. & Mrs. Don R. Claffey
 Mr. Todd B. Clark
 Mr. F. Thomas Clark
 Mr. & Mrs. John B. Clark
 Ms. Linda Clark Baker
 Mrs. Rosa Cleary
 Dr. Jeffrey W. Clemens &
 Dr. Carole C. Wegner
 Mr. & Mrs. Paul J. Clements
 Mr. Steve Click
 Jimmie & Nancy Clifford
 Dr. Michelle L. Cloud
 Joyce Clum
 Mr. & Mrs. William Clymer
 Ms. Karlaena Cody &
 Mr. Stephen R. Wagman
 Mrs. Sandra C. Coghill
 Ms. Sterling Cole
 Mrs. Sheila Cole
 Mr. & Mrs. Henry F. Cole
 Victoria B. & Mason G. Coleman
 Rebecca L. & Robert L. Coleman
 M. A. Coleman & Sarah Blackman
 Mrs. Mildred Collins
 Mr. & Mrs. Terry G. Collins
 Mr. Scott Collins &
 Mr. Charles S. Collins
 Mrs. Jennifer J. Collins
 Lee T. & Mary Lee Comer
 Patrick F. & Julie K. Comer
 Mr. James Comfort
 Ms. Sara Compton
 Mrs. Janet L. Compton
 Mr. Joseph Compton
 Mr. J. Michael Condit
 Mr. Ciaran Connery
 Mr. William S. Connor &
 Ms. Telene A. Edington

Mr. & Mrs. Robert Considine
 Mr. Ebrima Conteh
 Mr. & Mrs. Larry D. Contos
 Ms. Doris J. Conway
 Mr. & Mrs. Sydney P. Cook
 Lynda K. & David B. Cook
 Mr. William J. Cook
 Ruth E. Coon
 Dana C. & Jeffrey R. Cooper
 Jane F. Corbett
 Rev. Lorraine Coufal
 Mr. Paul J. Count
 Mr. Scott A. Courtney
 Dixie & James Covert
 Mr. Trent Cowles
 Mr. & Mrs. Carl Cox
 Mr. David L. Cox
 Mr. Daniel L. Cox
 Mrs. Betty J. Coy
 Mr. Pat Coyle
 Dr. & Mrs. David Crabb
 Mr. Ronald Craig &
 Mr. Scott Franklin
 Mr. & Mrs. James Craig
 Dr. & Mrs. Alex Craig
 Mr. & Mrs. William Cramer
 Mr. & Mrs. Jack Crane
 Sandra L. Crawford
 Mr. & Mrs. Peter K. Crawford
 Ms. Patsy A. Crawford
 Mr. Michael Craycraft
 Dr. Kelly M. Credille &
 Dr. Rob Maier
 Dr. & Mrs. Kenneth D. Crews
 Carol Ann Crews
 Dr. Larry Cripe & Dr. Mary Jacobs
 Ms. Sharon L. Critchlow
 Ms. Moria E. Croley
 Mr. & Mrs. David E. Crook
 Mrs. Sharon L. Crooke
 Mr. Warren D. Crooks &
 Mrs. Verna D. Crooks
 Mr. Donald Crshaw
 James P. & Sharon K. Cross
 Terri & Rick Cuellar
 George & Linda Cullinan
 Ms. Nathalie Culpepper
 Mr. James R. Cumming
 William Cummings
 Ms. Karen Cummins
 Dr. Alvin J. Cummins
 Anne G. & Larry Curless
 Jennifer K. & Chris J. Curran
 James P. & Carolyn J. Curry
 Timothy L. Curry
 Lynn M. & John Cuthbert
 Mr. Arthur E. Cutler
 Mr. Robert S. Daly
 Ms. Crystal Danbala
 Mr. Robert H. Daniel &
 Mr. David R. Miller
 Mr. Harold Daniels
 Rev. J. Nicholas Dant
 Mr. & Mrs. Byron W. Daugherty
 Bob & Stephanie Daugherty
 Mr. & Mrs. John M. Davis
 Mr. Thomas L. Davis
 Latsi Davis
 Mr. John E. Davis
 Ms. Virginia L. Davis
 Mr. & Mrs. Frank E. Davis
 Ms. Tracy L. Davis
 Mr. & Mrs. Gene Davis
 Mr. Wilbur A. Davis
 Mr. Thomas L. Davis
 Ms. Cathy Jane Davis
 Mr. Michael B. Davis
 Mr. & Mrs. Leon B. Davis
 Mr. Joe Davis

Mr. Kelly M. Day
 David R. & Brenda C. Day
 Ms. Georgette Burvee &
 Ms. Victoria Deak
 Mrs. Deanna DeBrier
 David & Ellen Deeter
 Ms. Kathleen Delaney
 Mr. & Mrs. Stephen E. DeMougin
 Mrs. Alyssa D. Dempsey
 Mr. Jonathan S. Denne
 Dr. Anna A. DePaoli-Roach &
 Dr. Peter J. Roach
 Mr. Joseph Desral
 Ms. & Mrs. Mary Grace Devine
 Mr. Franklin N. DeWester &
 Mrs. Kathy DeWester
 Ms. Lisa A. Dick & Mr. Jeffrey R. Dick
 Janet L. Dicken
 Mrs. Mariou L. Dickey
 Ms. Anna M. Dickson
 Dr. Federico Dies
 Andrew J. & Miriam Diez
 Mr. & Mrs. Richard Dillon
 Ms. Anne M. Dillon
 Mr. Travis DiNicola &
 Elizabeth Garber
 Travis Dinicola
 Mr. Michael Dinius &
 Jeannie Regan-Dinius
 Mr. Joshua Dinkel
 Terry R. Dobson
 Craig Doerner
 Ms. Grace Dolin
 Ms. Rosemary Dorsa
 Ms. Joan C. Dosztan
 Mr. & Mrs. Douglas W. Dougherty
 Ms. Ellen Douglas
 Ms. Marcia Douglas
 Mr. & Mrs. Berkley W. Duck
 Mr. & Mrs. Earl H. Duckwall
 Ms. Dorothea Duffy
 Mrs. Amy C. Dukehart
 Christine Duncan
 Mr. & Mrs. Matthew Dunscombe
 Mr. Steve Durack
 Dinah C. & Dave Duvall
 Mr. & Mrs. Joseph H. Dwenger
 Ms. Joanne L. Dyer
 William J. Dynes
 Mr. Anthony Dzwonar &
 Ms. Jennifer Dzwonar
 Ms. Lisa Eagleson-Roever &
 Mr. Douglas Roever
 Mr. Samuel A. Earley
 Mr. Lyle M. Eaton
 Ms. Beth A. Eckert
 Mr. & Mrs. John Edgington
 Mr. Cam Edwards &
 Mrs. Diana Edwards
 Mr. & Mrs. Thomas Eggers
 Mr. & Mrs. Joe W. Eikenberry
 Dr. & Mrs. Lawrence Einhorn
 Dr. Carol C. &
 Dr. Timothy M. Eisenhut
 Dr. Ruth M. Ekangaki &
 Dr. Abie Ekangaki
 Mrs. Evelyn Elliott
 Mr. George C. Elliott &
 Ms. Marian C. Elliott
 James & Lynn Elliott
 Mr. William L. Ellis
 Dr. & Mrs. David W. Ellis
 Mr. Richard D. Ellisworth
 Mr. Stanley L. Elmore
 Ms. Caroline M. Emmert
 Mr. J. Patrick Endsley
 Mr. John K. Engel
 Mr. & Mrs. Stephen A. Enkema
 Mr. & Mrs. Ken Erickson

2009 LEADERSHIP GIVING TO WFYI

Dr. Judith B. Erickson
Miss Mary Helen Espenlaub
Mr. & Mrs. James E. Etzel
Mr. & Mrs. John T. Everitt
Dr. & Mrs. Ralph V. Everly Jr.
Kelly Ewell
Dr. & Mrs. Brian J. Fahie
Mr. & Mrs. James P. Fairfield
Mr. & Mrs. Thomas M. Fansler Jr.
Mr. & Mrs. Thomas Farlow
Mr. Troy Farmer
Mr. Richard Farmer
Deborah Farmer
Mr. & Mrs. William D. Farrington
Mr. & Mrs. John Fasick
Mr. Philip R. Fassnacht
Mr. & Mrs. James P. Fausset
Mr. Robert W. Fichtman &
Ms. Robin R. Waters-Fecht
Ms. Suzanne Felli &
Mr. James C. Felli
Ms. Joyce A. Felton
Julan Feng
Irvin Ferguson
Mr. G Thomas Fields
Ms. Margaret D. Fierke
Dr. Rose S. Fife & Dr. Kenneth
H. Fife
Mr. & Mrs. Ramon A. Figueira
Dr. Beth L. Fineberg
Ms. Janice Fiori
Ms. Barbara A. Fischer & Mr. &
Mrs. Richard M. Fis
Mrs. Alyce M. Fisher
Mr. & Mrs. Richard P. Fitzgerald
Michael Flanagan
Gail Folaron
Mr. Pat Foley
Mr. & Mrs. David Ford
Mr. & Mrs. Tim M. Forden
Mrs. Dottie Forth
Mr. Gerry Fortner
Mrs. Marjorie G. Foster &
Mr. Jack Schmeckebier
Ms. Ann P. Foster
Ms. Sage A. Foster
Ms. Mary D. Foxwell
Mr. & Mrs. Andy Fraizer
Mrs. Deborah P. Franco
Ms. Mary M. Frank
Ms. Marjorie A. Frank
Mr. & Mrs. Jeffrey Frank
Ms. Janelle W. Frazier
Alan S. Freemond Sr
Dr. & Mrs. Fred W. Frick
Mr. & Mrs. Robert L. Fridely
Mr. Tony L. Frisco
Mr. Jerry Fritts
Don & Beverly Fritz
Mr. David E. Froenicke
Mr. & Mrs. Henry L. Frommeyer
Ms. Anne M. Frye & Mr. Ed M. Frye
Mr. William T. Frye
Nancy & Don Fuller
Barbara Funkhouser
Ms. Gracanna B. Furnas
Mr. & Mrs. Bruce Gable
Sue E. & John W. Gaebler
Mr. & Mrs. Stephen C. Gaerte
Ms. Marjorie M. Gaier
Mrs. Ruth Gaines
Ms. Betty R. Gale
Ms. Kimberly A. Galeaz
Dr. & Mrs. John P. Gallagher
Ms. Michelyn Gallagher
Mr. Donald E. Gamble
Ms. Paula Garcia
Mr. & Mrs. Doug Gard
Mr. & Mrs. Mark C. Gargula
Mr. & Mrs. Thomas L. Garing
Rick Garnet
Mr. & Mrs. Robert S. Garramone
Mr. & Mrs. Richard W. Garrett
Linda Garringer
Mr. & Mrs. J. A. Gaskins
Ms. Marjorie A. Gastineau
Mr. Harry Gates
Al Gatnaitan
Mr. & Mrs. Andrew G. Geiser
Mr. & Mrs. Paul N. George
Mike & Marilee Gerdes
Mrs. Jo Ann Geringer
Mr. Bob Giacoletti
Mr. Richard H. Giles
Mr. David T. Gillespie &
Ms. Sandy Gillespie
Paul & Janice Gilliam
Mrs. Sue Anne Gilroy
Mr. & Mrs. John H. Gingrich
Mr. Keith E. Glading
Mr. Robert Gleason
Mrs. Betty J. Glenn
Mr. Hans A. Goemmer
Mr. Michael A. Goldfarb
Mrs. Dorothy Gollither
Hector Gonzales
Mr. Donald Good & Ms. Sue Good
LaRee A. Gordon
Mr. Leon A. Gottfried &
Ms. Linda D. Gottfried
Dr. & Mrs. Robert E. Gould
Dr. Arun Gowdamarajan &
Dr. Beata E. Samuel
Dr. Kristi L. Graham &
Mr. Robert E. Finkbeiner
Melody & Robert T. Grand
Mr. J. Lloyd Grannan
Dr. Shaun J. Grannis &
Dr. Sharron P. Grannis
Hetty Gray
Ms. Melinda Grayson
Dr. & Mrs. Frank J. Green
Dr. Dennis Greene
Ben & Rachel R. Greenfield
Dr. Charles W. Greenwood
Linda Gregory
Mr. & Mrs. James B. Gregory
Richard & Sharry L. Gregory
Dr. Gerald A. Griffin &
Mrs. Molly S. Griffin
Mrs. Ann B. Grimes
Ms. Rita F. Grisley
Patricia A. Griswold
Mr. George Groff
Ms. Janet Grandin &
Mr. Mark Grandin
Mr. & Mrs. Conrad A. Groseclose
Ms. Margaret Gross
William R. & Phyllis Groth
Mrs. Marjorie J. Grover
Mr. Ed Groves & Mr. Matt Barth
Mr. & Mrs. Frank Grunwald
Mr. & Mrs. John B. Grutzner
Mrs. Betty L. Guerrero
Rebecca & William Guertal
Dr. Shane L. Guffey
Mr. & Mrs. James B. Guffey
Mr. Robert L. Guillaume
Ms. Violet Haberkorn
Mr. & Mrs. James Hackleman
Mr. & Mrs. Chris Hagan
Mr. & Mrs. Eric Hagen
Linda Hajduk
Dr. Alvin J. Haley
Ms. Lillian C. Hall
Mr. & Mrs. Scott Hall
Mr. & Mrs. Steven R. Hall
Ms. Rebecca L. Hall
Mr. David P. Halloran
Mr. & Mrs. Gary L. Halstead
Kenneth H. & Barbara Hamilton
Mr. Richard Hamilton
Ms. Leslie M. Hammond
Mr. Lynn Hammonds
Dr. & Mrs. Everett B. Hancock
Stephen & Rosalie Hancock
Ms. Margaret A. Hannon
Kevin J. & Jane C. Hoppel
Mr. & Mrs. William H. Hardacre
Mrs. Mary Harden
Mr. & Mrs. Lowell Hardin
Mr. Jack A. Harding
Ms. Brenda L. Hardister
Ms. Cathy S. Harms
Barry S. & Patricia A. Harris
Mr. J Lowery L. Harrison III
Mr. Greg S. Harrison
Mr. Mike Hart & Ms. Lynne Hart
Ms. Lori Harting
Mr. Charles R. Hartle
Mr. Jeremy S. Hartnett &
Ms. Jill Lambertson
Mary A. Hartzler
Mr. & Mrs. Hart N. Hasten
Mrs. Doris Hauck
Mr. Olav Haug
Mrs. Amanda Haugh
Ms. Elizabeth A. Hausser
Dr. & Mrs. Patrick L. Havens
Jeffrey S. & Cindy Haverly
Mr. Edgar A. Hawk
Mr. Mike Hawkins
Mr. Randy L. Haymaker
Herbert & Laura Hays
Mr. & Mrs. Irving M. Heath
Mr. Ledger Heavilon
Mr. Greg K. Hebel
Mr. Robert B. Hebert
Mr. & Mrs. Edward P. Heeringa
Ms. Teresa M. Heil
Ms. Linda N. Heitzman
Mr. & Mrs. Jimmy L. Heller
Dr. Philip Heller
Patricia & Richard Hellman
Mr. & Mrs. Daniel N. Helms
Dr. Patricia Hendershot
Mr. William Henderson &
Miss Karen A. Henderson
Ms. Josie A. Henneke
Tom E. & Barbara E. Hennig
Ms. Krista M. Hensley
Mr. & Mrs. Walter H. Herd
Mr. Fred Herpart
Ms. Beth A. Herriman &
Mr. Bart Herriman
Mr. & Mrs. John Herrin
Mr. Glen E. Hesler
Mr. Brent G. Heslop
Mr. Larry Hesson
Mr. & Mrs. James Hetherington
Mr. Ron Heustis
Mr. & Mrs. William D. Hewett
Mr. Clinton Hiatt
Mr. Gerry Hiatt
Mr. & Mrs. Tod Higbee
Mr. & Mrs. Calvin E. Higgins
Dr. James I. Higginbotham &
Dr. Carolyn R. Higginb
David P. & Roberto K. Hillberry
Mr. Thomas H. Hill
Mr. Tim Hill & Ms. Julie Gries
Gloria Hill
Stanley E. & Dorothy Hirschfeld
Ronald Hirschfeld
Ms. Eve B. Hitchings &
Ms. Carrie V. Carter
Dr. & Mrs. Steven Hockett
Mr. Timothy Hodson
Ms. Lois L. Hoffman
Mrs. Kyle Holder
Mr. & Mrs. Martin R. Holdsworth
Mrs. Frances Hollett
Rebecca Hollingsworth
Ms. Martha S. Hollingsworth
Miss C.R. Holmes
Ms. Marilyn Holschuh
Virginia Holschuh
Ms. Betty K. Hommel
Mr. Greg C. Hood &
Mrs. Theresa Wilcox
Mr. & Mrs. James S. Hook
Mr. & Mrs. Philip R. Hooper
Mr. Greg Hoover
Mr. Daniel H. Hoover
Mr. & Mrs. Lee Horgan
Ms. Brenda Horn
Mr. James R. Horner
Mr. William K. Horstman &
Ms. Beverly Horstman
Mary S. & Ronald T. Horton
Ms. Sherryl Hoss
Joe & Dawn Hostetler
Mr. Larry B. House &
Ms. Kathleen House
Mrs. Alice Jean Howard
Mr. Wendell Howard
Mr. Oscar Howell
Ms. Patricia J. Howes
Mark H. & Maureen A. Hoyer
Ms. Joyce Hoying
Patricia S. & Todd W. Hrubey
Dr. Haitao Hu
Mr. Terry Hubbard
Ms. Kathryn Huehl
Christie A. & Neil A. Huff
Mr. Greg Huff
Ms. Tracy L. Huffman
Larry F. & Lola Huggins
Mr. & Mrs. Bruce A. Hugon
Martha L. Hulet
Ms. L Renee Hull-Allen &
Mr. Lawrence Allen
Mr. Steve Hultgren
Ms. Carmella Hume
Mr. Robert L. Hummel
Mrs. Lana Hunt
Mrs. Rita K. Hunt
Mr. Stephen E. Hunt
Mr. Joseph M. Hunt
Mrs. Alice V. Hunter
Mr. & Mrs. Dimas G. Hunter
Mr. Joe J. Hunter-Latak
Ms. Kathleen Huser
Ms. Mindy Hutchinson &
Mr. Rob Friedman
Mrs. Ashley Huika
Mrs. Joyce Hux
Mr. & Mrs. Mawyer Hynton
Peter D. Hynton & Wendy J. Otoupal
Mr. Gary L. Ice
Danielle Imo
Mr. & Mrs. Roland Inskeep
Ms. Nancy Isray
Mrs. Bertha M. Irwin
Mr. & Mrs. William Irwin
Mr. & Mrs. Steve Ison
Ms. & Mrs. Judith K. Jaberg
Mr. David M. Jack
John W. & Kara J. Jacobs
Ms. Vlady Jakovljevic
Mrs. Howard Jansen
John Jaqua
Mr. Steven Jasper
Mrs. Jeannette Jefferis &
Marvin Miller
Mr. Ralph F. Jeffers
Mr. & Mrs. William D. Jenkins
Mr. & Mrs. Charles D. Jenkins
Ms. Lorraine A. Jensen
Ms. Jodi E. Jensen
Mrs. Karin Johansson
Mrs. Katrina L. John
Mr. Robert H. Johnson
Mr. & Mrs. Aaron V. Johnson
Mr. Ernest L. Johnson
Mr. & Mrs. Thom Johnson
Dr. Kristin A. Johnson &
Dr. Sandy Geeganage
Mr. Harold K. Johnson
Dr. Karen R. Johnson
Mr. & Mrs. Matthew Johnson
Mr. & Mrs. Michael L. Johnson
Janice Jones
Mrs. Marcia S. Jones
Mr. Jerry S. Jones
Mr. & Mrs. Scott Jones
Miss Cheryl Jones & Mrs.
Jacquelyne Dunn
Ms. Kim Jones-Owen
Dr. Michelle Jones-Singer &
Mr. Terry Singer
Mr. & Mrs. Charles Jordan
Katherine Jourdan
Kevin R. & Kimberly Jowitz
Ms. Betsy A. Joyce
Mr. & Mrs. Dennis M. Joyce
Ms. Patricia S. Kappes
Ms. Katherine M. Karmolinski
Ms. Doris Karr
Ms. Carolyn Kaserman
Mr. Chris Katterjohn
Mr. & Mrs. Barry P. Katz
Mr. & Mrs. John D. Kay
Mr. John S. Keeler
Mr. Richard P. Keller
Mr. John Kelley
Ms. Lisa A. Kelly
Kimberly Kelly
Linda L. Kelsay
Mr. & Mrs. Frederick M. Kelvin
Mr. Luke Kenley &
Ms. Sarah B. Kenley
Ms. Lois Kennedy
Mary Lou & Chris Kenny
Mr. Keith Keppel
Ms. Becky Kevoian
Mr. & Mrs. Dick Kiefer
Michael & Pat Kiefer
Rev. Glenn M. Kimball
Mr. & Mrs. Alan Kimbell
Mr. & Mrs. Max Kime Jr.
Mr. James L. Kincannon
Rev. Jack T. King
Ms. Carol Jane King
Mr. Jeffrey T. King
Mr. Harry W. Kinkead
Mr. & Mrs. Michael D. Kinnick
Ms. Paula J. Kiraly
Mr. & Mrs. Robert H. Kirkpatrick
Mr. James Kirley
Susan E. Kish
Simon A. & Sition Kissler
Mr. Ernest Kitterman
Dr. & Mrs. Eugene C. Klatte
Mr. & Mrs. Larry Kleiman
Mr. John Kline
Miss Margaret Klingerman
Mrs. Lee Ellen Knight &
Mr. Kevin S. Minnick
Ms. Debby Knox &
Mr. Richard Tirman
Mr. Richard Kohler
Prem K. Konakondla
Wayne J. & Carol Kornas
Ms. Marilyn Koss
Mr. Karl Kovach
Ms. Roxanne L. Kovacs &
Dr. Richard J. Kovacs
Dr. Angelika R. Kraft &
Dr. Rainer A. Kraft
Donna P. Kraft
Mrs. Lou A. Kramer
Dr. Elizabeth C. Kramer &
Mr. John B. Kramer
Mrs. William Krantz
Mr. & Mrs. Edwin C. Kregenbeck
Ms. Maryann Kriner
Dr. & Mrs. Gopal Krishna
Mr. & Mrs. Paul G. Krueger
Mr. Arno J. Kuhn
Mrs. Millissa M. Kurcinka
Ms. Christina P. Kus
Mr. Peter Lachmann
Dr. Alan P. Ladd
Mr. & Mrs. Donald F. Lahr
Mr. Geoffrey Lamb
Ms. Toni Lambirth
John E. & Cecilia Lammers
Ms. Elizabeth A. Lamping
Rev. Richard L. Lancaster
Mr. & Mrs. Richard Lancaster
Mr. Thomas D. Lane &
Ms. Pamela S. Perry
Mr. & Mrs. A.T. Lange
Ms. K Diane Lanman & Mr. Norman
Lefstein
Mr. Marty Larch
Miss Susan L. Larimer &
Mr. Kenneth C. Larimer
Mr. Gary Larsen
Marian Larson
Mrs. Jeanne Laughner-Ormsby
Ms. Deborah L. Law
Kenneth & Geraldine Lawrence
Ms. Terri M. Leake
Mr. James Leaver
Ms. Gail N. Lee
Mr. & Mrs. Jacques P. LeFevre
Mr. & Mrs. David Lehman
Mr. & Mrs. Ron Lehrman
Mr. Kirk D. Lemoine &
Dr. Wendy Winckelbach
Mr. Timothy D. Lemon
Keith W. & Kathryn Lerch
Ms. Andra H. Liepa
Dr. & Mrs. Jeffrey D. Lightfoot
Mr. & Mrs. Terry Lindstrom
Mrs. Georgiann C. Linnemier
Mr. & Mrs. James W. Linville
Mr. & Mrs. Floyd R. Lister
Mr. & Mrs. Arthur Littlepage
Ms. Sue London
Dr. & Mrs. Glenn A. Loomis
Ms. Phyllis J. Lovgren
Mr. & Mrs. Robert Lowe III
Mr. George G. Lowry
Robin L. & Mark Ludek
Ms. Kathleen Luksic
Mr. & Mrs. Ralph Lundgren
Darren E. Lundsford
Ms. Lisabeth Luther
Mr. Leonard B. Lutz
Mr. David J. Lux
Mr. George F. Lynch
Carlos Lyon
Mr. James M. Maddox
David L. Madison
Mary Angela Maguire
Kim O. & Murph Mahaffey
Mr. & Mrs. Jack Mahoney
Mr. William J. Majeske
Dr. & Mrs. James K. Malone
Andrew Mandery

2009 LEADERSHIP GIVING TO WFYI

Ms. Victoria Mandras
 Mr. & Mrs. Mohamad Mansoori
 Mrs. Clara J. Marcum
 Ms. Michelle Marcum
 Mrs. Melanie Margiotta
 Joseph L. Mark
 Mark S. Adams Bldg. Corp.
 Mr. & Mrs. Daniel Markley
 Mr. Robert N. Marks
 Jack N. Marsella
 Mr. & Mrs. David W. Martikke
 Julie Martin
 Mr. & Mrs. William B. Martin
 Ms. Marilyn Martin
 Mrs. Kristina Martin &
 Mr. James A. Reed
 Mr. Wesley Martin
 Dr. Douglas K. Martin
 Ms. Hughlene Martinez
 Ian F. & Jennifer J. Masterson
 Kenneth A. & Christine Mathar
 Mr. & Mrs. Dennis A. Mathew
 Mr. & Mrs. Rohit Mathur
 Mrs. Ruth E. Matney
 Ms. Dheepa R. Maturi &
 Dr. Raj K. Maturi
 Mr. & Mrs. James R. Maybury
 Ms. Margaret Mayer
 Mr. & Mrs. Theodore C. Mays Jr.
 Dr. James A. McAteer &
 Ms. Mary McAteer
 Mr. Melvin K. McCain
 Mr. Gregory N. McCart
 Ms. Linda L. Mccauley
 Mr. Raymond H. McCloud &
 Ms. Kyong C. McCloud
 Kenneth McClung
 Ms. Sarah M. McConnell &
 Mr. Timothy J. Riffle
 Mrs. Vera M. McCorkhill
 Ms. Carolyn S. McCorkle
 Mr. Charlie McCormack &
 Ms. June M. McCormack
 Mr. & Mrs. Michael D. McCormick
 Mr. Mike McCracken
 Mr. & Mrs. David G. McCullough
 Kenneth P. & Karen A. McCune
 Mr. & Mrs. Brian L. Mcdermott
 Mr. & Mrs. Danny Mcdermott
 Mr. Edward McDonald
 Ms. Monica McFearin
 Mr. Tim A. McGeath
 Helen McGee
 Mr. Michael J. McGuire
 Dr. Lisa E. McGuire &
 Mr. Cameron A. McGuire
 Dr. Paul McHenry
 Ms. Shirley McIntosh
 J F. McLaughlin
 Nicole McMillin
 Mrs. John McNeal
 Ms. Susanne M. McNeely
 Mr. & Mrs. William McNiece
 Mr. & Mrs. Robert McVey
 Mr. Stephen McWilliams &
 Mrs. Judith McWilliams
 Mr. John M. Mead
 Mr. & Mrs. Boris E. Meditch
 Lesley A. Meier & Ryan P. Shore
 Dr. & Mrs. M P. Meisenheimer
 Mr. David Mendel
 Mr. & Mrs. Hans Mengering
 Mr. & Mrs. David Mercer
 Mr. & Mrs. Michael Merrill
 Mr. Severin M. Messick
 Mr. & Mrs. Kyle J. Messmore
 Mr. & Mrs. Richard H. Metzger
 Mr. Timothy Meyer
 Mrs. Jane Milan

Mr. William Milburn
 Mr. Caryl J. Miller
 Mr. & Mrs. Gary L. Miller
 Ms. Lucille Miller
 Mrs. Jane K. Miller
 Ms. Sandy Miller
 Miss Windy L. Miller
 Ms. Sharon Miller
 Gary L. Millikan
 Mr. & Mrs. Dale E. Millington
 Morris & Mary Ann Mills
 Mr. & Mrs. David Miner
 Dr. Gary W. Misamore
 Mr. & Mrs. Steven K. Mitchell
 Dr. Melissa C. Mizesko
 William K. Mock
 Ms. Rodean A. Moerdyk
 Michael T. & Janet M. Mohler
 Terry Mohr
 Mr. Mark J. Molter
 Mr. Scott C. Montgomery &
 Ms. Carrie A. Voorhis
 Bonnie Moon
 Richard Moon
 Mr. & Mrs. Mark A. Moore
 Mark S. & Ruth Moore
 Mr. Jack T. Moorman
 Mr. & Mrs. Jack L. Morgan
 Miss Milton Morgan
 Ms. Mary Jane Moriarty
 Ms. Mary B. Moriarty Adams &
 Mr. Frank Adams
 Susan A. Moritz
 Ms. Kathy J. Morrical
 Mr. Martin P. Morris
 Mr. & Mrs. Michael Morris
 Mr. & Mrs. David Morris
 Mr. Tom Morris
 Mrs. Wanda L. Morrison
 Richard Moss
 Mrs. & Mrs. Mary Jane Mowle
 Ms. Joann Mueller
 Debrah Mullins
 Mr. & Mrs. Richard Mumaw
 Margaret Murphy
 Mr. & Mrs. John A. Murphy
 Will Murphy
 Ms. Annette Murray
 Rev. Samuel J. Murray
 Ms. Beverly S. Music
 Mr. Joel Musselman
 Frieda E. Myers
 Mark Myers
 Dr. Steven Nail
 Mr. & Mrs. Julian K. Nail
 James & Susan Naus
 Dr. Lee Anne Nazer
 Lena M. & Joe Neal
 Mr. & Mrs. Thomas R. Neal
 Ms. Nancy H. Neal
 Dr. Peter Nechay
 Ned & Pamela Newhart
 Mr. William Newport
 Mr. & Mrs. Doug Niccum
 Ms. Kay Nickey
 Mr. William A. Nicoll
 Ms. Ann Niebrugge
 Mrs. Ruth L. Nightenhelser
 John E. & Mary Jane Norman
 Ms. Lois O'Banion
 Mr. Berton Obryan &
 Mrs. Marlene O'Bryan
 Michael O'Connor
 Mrs. Carol O'Friel
 Helen O'Guinn
 William J. O'Hara
 Mr. John D. O'Hara
 Mr. & Mrs. Dennis D. Oklak
 Dr. & Mrs. Adrian Oleck

Dr. & Mrs. Michael Olinger
 Dr. Jill M. Olinger &
 Dr. Duane T. Birnbaum
 Mr. John Oliver
 Mr. Michael N. Olson
 Ms. Rosemary O'Malley
 Mr. & Mrs. Patrick O'Malley
 Mr. Stephen Ongley
 Ms. Vicki A. Opel & Mr. David Opel
 Mr. C. Richard Oren
 Mrs. Janice O'Rourke
 Mr. Bruce L. Osborn
 Steve Osborn
 Mrs. Mary C. O'Sullivan
 Mr. Brendan G. O'Sullivan-Hale
 Mr. Oscar F. Ovelton
 Ms. Julie Overbeck
 Dr. Marc Overhage &
 Dr. Mary Brunner
 Mr. & Mrs. David Owen
 Mr. & Mrs. G. Douglass D. Owens
 Mrs. Judith Owens
 Beverly S. & Gerry S. Oxford
 Mrs. Lucille J. Painter
 Mr. Dan Paliganoff
 Ms. Melinda K. Palmer
 Mr. & Mrs. Mark Palmer
 Mr. & Mrs. James L. Palmore
 Ms. Virginia M. Pang
 Mr. & Mrs. John Pankhurst
 Ms. Susan B. Parker
 Mr. Richard L. Parrish &
 Ms. Patty Parrish
 Mr. & Mrs. Nate Pass
 Mrs. Helen J. Patterson
 Mr. & Mrs. Don Patterson
 Mr. & Mrs. James P. Patterson
 Ms. Betty Pattison
 Mrs. Wanda L. Morrison
 Ms. Joan Pauls
 Alisa A. Peary
 Mr. David R. Peck
 Margaret E. Peck
 Ms. Teresa Pena
 Dr. Nadine S. Pence
 Ms. Melissa Pennamped &
 Mr. Bruce M. Pennamped
 Ms. Shirley A. Pennington
 Mrs. Yvette K. Perjes
 Mrs. Lynne Perkins Socey &
 Matthew A. Socey
 Ms. Sarah Perrone
 Mr. & Mrs. Kenneth W. Perry
 Maureen Perry
 Erin Pesavento
 Mr. Jeff Pesel
 Dr. Daniel Pesut
 Mr. & Mrs. Gregory Peterson
 Barton & Amy M. Peterson
 Ms. Donna A. Petraits
 Ms. Alisa M. Petruzzi
 Ms. Diane Pfeiffer
 Ms. Anne L. Phelan
 Sarah Pickle
 Mr. & Mrs. Patrick Pierz
 Miss Michael Pietrotatelli
 Ms. Margaret E. Piety &
 Mr. Josef M. Laposa
 Mr. John Pittaway
 Dr. Charles M. Platz
 Francesca Plett
 John M. & Bobbie Plewes
 Ginger & Byron Plexico
 Mr. & Mrs. John B. Pock
 Mr. Josh R. Poertner &
 Dr. Bobbi J. Byrne
 Mr. Peter P. Polit &
 Dr. Tammy L. Polit
 Ms. Mary P. Polk

G D & Adela Pollock
 Mr. Richard E. Ponder
 Mr. Donald Poole
 Ms. Barbara A. Porter
 Candace Porter
 Mr. Tom Porter
 Dr. Marjorie Porter &
 Mr. David Porter
 Ms. Carole Potter
 Mrs. Margaret Potts
 Ms. Debra K. Potts
 Ms. Holly Powell
 Mrs. Rebecca S. Powell
 James D. Powers
 Jim & Jean Preer
 Derek V. & Laura S. Price
 Mr. & Mrs. Dan W. Price
 Ms. Bonnie G. Priest
 Nicholas Prince
 John Pruitt
 Bruce & Susan Pfallium
 Mr. & Mrs. Steve Purcell
 Jeffrey A. & Peggy A. Purvis
 Ms. Cynthia A. Pyle
 Dr. Kimberly A. Quid
 Mr. Daniel J. Querbach
 Ms. Nancy E. Quest
 Ms. Eleanor E. Ragon
 Mrs. Leah M. Raider
 Anjali & Rajeev Raje
 Ms. Suzanne M. Rankin &
 Dr. David O. Magnante
 Ms. Carolyn B. Ratliff
 Mr. & Mrs. Ed Ratts
 Mr. & Mrs. David L. Ray
 Dr. Scott L. Ray & Dr. Patricia G. Ray
 Mr. & Mrs. Kevin J. Rearick
 Linda L. Red Elk
 Mrs. Sandra Reed
 Mr. Davies Reed
 Mr. & Mrs. David Reedy
 Mr. & Mrs. Robert Reiberg
 Mr. Joseph P. Reidelbach
 Mr. & Mrs. Wally I. Renfro
 Dr. James M. Renga &
 Ms. Nancy A. Parker
 Ms. Kristina M. Reville &
 Ms. Elizabeth A. Jones
 Dr. & Mrs. Rodney A. Rhoades
 Mr. & Mrs. Brian Richardson
 Mrs. Gloria J. Richey
 Mr. Harold R. Richey
 Mr. & Mrs. Joseph P. Rienecker
 Mr. Timothy Bodenreider &
 Ms. Sarah Riester
 Mr. & Mrs. Craig D. Rife
 Ms. Laura L. Rife &
 Mr. Gregory M. Howard
 Mr. & Mrs. John F. Rihm
 Ms. Althea Rinehart
 Mr. & Mrs. George Ringer
 Miss Lenora Ritchie
 Judith E. Ritter
 Mr. C. Ritz
 Mr. Isadore Rivas
 Dr. & Mrs. Chuck M. Rivera
 Mr. & Mrs. Neal R. Roach Jr.
 Mr. Tim Robb & Ms. Linda Robb
 Mr. & Mrs. Dale E. Roberts
 Mrs. Carolyn Robertson
 Mr. John C. Robertson
 Mr. Curtis H. Robertson
 Mr. Michael W. Robertson
 Mr. Mel Robinson
 Mr. & Mrs. Thomas A. Roblee
 Mr. & Mrs. Raymond Rodda
 Ms. Judith B. Roepke
 Mrs. & Mrs. Garnet L. Roesel

Mr. Phil R. Roettcher &
 Dr. Suzanne L. Bowyer
 Mr. Scott Rogers
 Ms. Patricia Rogier
 Dr. & Mrs. Mac C. Roller
 Judi Romano
 Steve Romweber
 Riki & Roberta Rose
 Mr. & Mrs. Irwin R. Rose
 Mr. Anthony J. Rose &
 Ms. Marya M. Rose
 Ms. Heather Ross &
 Mr. Timothy Holtz
 Dr. & Mrs. Donald A. Rothbaum
 Ms. Anne E. Rourke
 Mr. & Mrs. David A. Royalty
 Mr. Charles R. Rubright
 Mr. & Mrs. Matthew C. Rueff
 Mr. Nicholas J. Runnebohm
 Ms. Gloria Rush
 Mr. James R. Rushton
 Ms. Barbara A. Russell
 Mr. & Mrs. Timothy A. Russell
 Mr. & Mrs. Charles Russell
 Dr. Robert C. Ryan
 Mr. Gary P. Ryan &
 Ms. Lynn W. Ryan
 Marvin & Susan Rytting
 Mr. Jason M. Sadler &
 Mr. Mark A. Schuster
 Mr. & Mrs. Thomas Sadlowski
 Mr. & Mrs. Gregory D. Sager
 Ms. Karen L. Salerno
 Mr. & Mrs. Eric S. Sampson
 Mr. & Mrs. Denver Sams
 Ms. Marie E. Samulowitz
 Manuel & Anne Sanchez Felix
 Mr. Russel J. Sanders
 Mr. & Mrs. Steven Santy
 Mr. Floyd C. Satterlee &
 Ms. Michelle A. Stoneburn
 Dr. & Mrs. John W. Sawin
 Ms. Romil Saxena
 Mr. & Mrs. Chris Scanlon
 Mr. William E. Schantz
 Mr. Joel Scheele
 Mr. Roderick Scheele &
 Mrs. Anne E. Scheele
 George & Marilyn Schenetzke
 Dr. & Mrs. John J. Schier
 Ms. Linda M. Schirtzinger
 Mr. & Mrs. Rick D. Schlegel
 Mrs. Carol Schlotterbeck
 Mr. Paul Schmitt
 Mr. & Mrs. Paul Schneck
 Ms. Pamela G. Schneeman
 Mr. & Mrs. Robert E. Schneider
 Mrs. Theresa M. Schoen
 Mrs. Debbie Schoentrup
 Mrs. Nila Scholl
 Dr. A Jane Schollaert
 Ms. Dorothy Schroeder
 Mrs. Ladonna I. Schroeder
 Mr. & Mrs. Pete Schroeder
 Mr. & Mrs. Donald C. Schultheis
 Dr. Terry Schumacher &
 Mrs. To-Chau Tran
 Mr. Fred Schwab &
 Ms. Susan R. Schwab
 Jane H. Schwartz
 Mr. & Mrs. Daniel R. Scism
 Eric L. Scott
 Mr. & Mrs. Steven Scott
 Mr. Mark Scott
 Mr. & Mrs. Perry Scott
 Fred Scott
 Ms. Dana L. Scruggs
 Secauer, Lydia
 Mr. L Ramon Secrest

Dr. Phillip Segal
 Mr. & Mrs. Tim L. Seiler
 Mr. & Mrs. Edward B. Seitz
 Mr. & Mrs. Greg Seketa
 Mr. Larry J. Sernyk
 Mr. Scott D. Severson
 Mrs. John Shanks
 Mr. Joshua D. Shanks &
 Ms. Nylene Shanks
 Mr. & Mrs. Michael J. Shannon
 Mr. Ron Sharpe
 Miss Ada C. Shaum
 Mr. & Mrs. Wayne Sheets
 Trent Sheldon
 Mr. Donald Shelley
 Mrs. Virginia Shepard-Derome
 Ms. Kimberly Sherick
 Dr. & Mrs. Stephen Shideler
 Mr. Seth W. Shields
 Mr. & Mrs. Charles Shirk
 Mr. Michael D. Shlakman
 Matthew A. Shockley
 Dr. Vipula K. Shukla
 Mark T. Shullenberger &
 Mr. John E. Lamborn
 Mr. & Mrs. David E. Shutters
 Mr. Thomas L. Siddall
 Dr. & Mrs. Aslam R. Siddiqui
 Mr. & Mrs. Sheldon Siegel
 Mr. Miles G. Siegel
 Roger Sieloff
 Elizabeth J. Siler
 Michael L. Simmons Sr.
 Mr. & Mrs. Kirpal Singh
 Dr. Utpal Singh & Dr. Shilpee Sinha
 Mr. Sukhbir Singh
 Mr. & Mrs. James F. Singleton
 William E. Singleton
 Mr. & Mrs. Richard L. Slabach
 Mr. & Mrs. Alex Slabosky
 Mrs. Jayanna K. Slayten
 Mr. & Mrs. Richard M. Small
 Mr. & Mrs. Brian L. Smiler
 Dr. Roberto A. Smith
 Mr. & Mrs. Steve R. Smith
 Ms. Jean M. Smith
 Ms. Marilyn R. Smith
 Mr. & Mrs. Charles Smith
 Dr. & Mrs. Jerrold R. Smith
 Mr. & Mrs. William I. Smith
 Mr. William C. Smith III &
 Ms. Marilyn R. Smith
 Ms. Joelene A. Smith
 Mr. & Mrs. Kevin D. Smith
 Mr. Anthony W. Smith
 Mr. James R. Smith
 Mr. & Mrs. Bernell Smith
 Ms. Linda K. Smock &
 Mr. Stanley D. Smock
 Catherine Smock
 Mr. & Mrs. David Snapp Jr.
 Ms. Betty Snyder
 Mrs. Kathryn Snyder
 Miss Sonja Solomonson
 Jon W. & Patricia Sommer
 Mr. & Mrs. James R. Sommers
 Mr. & Mrs. Phillip Sonnenberg
 Mr. Alan Spang
 Mr. Ronald R. Speedy
 Amanda L. & Chad M. Spencer
 Ms. Amie Sperring
 Mr. Bret Sperry
 Mr. Michael Spiczuzza &
 Ms. Carol A. Spiczuzza
 Rabbi & Mrs. Aaron Spiegel
 Mr. & Mrs. Stanley M. Spinola
 Randy Spleth &
 Dr. Ann L. Updegraff Spleth
 Nancy Spurgeon

2009 LEADERSHIP GIVING TO WFYI

Mr. Robert K. Squires
 Mr. Andrew P. St Angelo
 Gary & Janet Stach
 Mr. & Mrs. Paul F. Stanton
 Mr. & Mrs. William Staruszkiewicz
 Edward Steele IV
 Dr. Ronald K. Stegemoller &
 Mrs. Sharron E. Stegem
 Mrs. Carolyn Steinberger
 Richard & Evalyn Steininger
 Mr. William R. Stella
 Dr. Sarah M. Stelzner &
 Dr. David Ingram
 Mrs. Sally Stephens
 Ms. April A. Sterling
 Doris J. Stern
 Ms. Barbara Stevens &
 Mr. Robert Stevens
 Mrs. Lois J. Stewart
 Donnell Stewart
 Mr. Daniel C. Stickney &
 Ms. Katherine W. Stickney
 Mr. Joseph O. Siits
 Mr. Martin Stob
 Mr. & Mrs. Eric E. Stoll
 Ms. Kathy L. Stolz
 Mr. & Mrs. Theodore Stoneberg
 Mrs. Lynda R. Stoops
 Ms. Donna W. Storms
 Mr. Daniel J. Stout &
 Mrs. Marianne Stout
 Mr. Vernon J. Stover
 Mr. & Mrs. Jim Strain
 Mrs. Patricia A. Strange
 Mr. Arthur R. Stricker
 Mr. & Mrs. David Strickland
 Mr. & Mrs. Charles E. Stuart
 Mr. & Mrs. Tom L. Stubbeman
 Mrs. Margaret Stull
 Ms. Julia Stumpff &
 Mr. Alan Kilbarger
 Mr. Christopher Suelzer
 Mr. Jerry Sukay & Ms. Norma
 J. Sukay
 Ms. Kathleen A. Sullivan
 Ms. Sharon Sullivan
 James H. & Lynne Sullivan
 Dr. Carolyn Sur
 Ms. Paula R. Susemichel
 Mr. & Mrs. Brent K. Sutton
 Prof. Robert Sutton &
 Prof. Susan D. Sutton
 Mr. Brandon F. Svec
 Marie Swanson
 Mr. Charles Swearingen
 Mr. Russell W. Sweeney &
 Ms. Bonnie E. Sweeney
 Mrs. Margaret R. Taber
 Mr. & Mrs. Avon R. Tabor
 Mrs. Cathy R. Taisch
 Mr. & Mrs. Don R. Tarr
 Dr. & Mrs. Jack A. Tatam
 Ms. Laura J. Taube
 Ms. Lisa M. Tavormina &
 Mr. Jeff G. McClain
 Mrs. Marcella J. Taylor
 Mr. & Mrs. Howard R. Taylor
 Beverly L. Teach
 Mr. & Mrs. Mark J. Tebbe
 Mr. & Mrs. Merle V. Tebbe
 William C. & Connie Tellman
 Lisa H. & Richard A. Thielmeyer
 Mr. Adam D. Thies
 Mr. Evan Thomas &

Ms. Tammy Christenberry
 Mr. Norman E. Thomas
 Deann Thomas
 Mr. Jeffrey Thompson
 Mr. Robert Q. Thompson
 Donna Thompson
 Ms. Gina P. Thompson &
 Mr. Steven D. Thompson
 Mr. John Thornburgh &
 Ms. Deborah Thornburgh
 Ms. Melinda A. Thornton
 Mr. & Mrs. Harry W. Tibbetts
 Mr. & Mrs. Kyle S. Tierney
 Ms. Suzanne H. Tilton
 Maureen M. & David Timm
 Mr. Derek A. Timme
 Ms. Lynne Timmermans
 Mr. Edgar N. Tipton
 Ms. Mary Titsworth Chandler &
 Mr. Bryan J. Chandle
 Ellen Todd
 Dr. & Mrs. Frederick A. Tolle
 Mr. Joseph Torlos
 Ms. Elizabeth Torsner
 Phillip D. Toth
 Ms. Joyce P. Tovsky
 Ms. Betty Townsend
 Mr. Robert D. Townsend
 Mr. Stephen Tracy
 Robert W. Trantum
 Mr. & Mrs. Bernard J. Trauner
 Mr. & Mrs. Jerry W. Travelstead
 Mr. Frederick R. Trieschman
 John F. Triplett &
 Kathleen A. Whalen
 Mr. & Mrs. F. William Tripp
 Mr. Bill E. Trout
 Ms. Wendy Tucker
 Mr. Mitch Tull
 Mr. & Mrs. Richard B. Tully
 Mr. Ted Turner
 Mr. & Mrs. Lawrence I. Turow
 Mr. & Mrs. Michael Tynan
 Ms. Adele F. Tyson
 Mr. Michael A. Tyus
 Mr. Art K. Umble &
 Ms. Jeni H. Umble
 Mrs. Sharon C. Upchurch
 Ms. Mary Ann Urbancic
 Mr. K. E. Valentine
 Mr. Ed L. Van Alstyne
 Mr. Eric A. Van Straten
 Ms. Karen F. VanderVeen
 Mr. Rip Vanwinkle
 Miss Barbara Vargo
 Mrs. Katharine Vargo
 Dr. Nanci R. Vargus
 Mark A. & Ann Varnau
 Mr. Robert F. Vernon &
 Ms. Katherine Vernon
 Mrs. Dixie Visker
 Mr. & Mrs. Ronald Vogler
 Mr. H. M. Voiles & Ms. Donna
 J. Voiles
 Mr. & Mrs. Timothy Volkman
 Ms. Teresa J. Voorhees &
 Ms. Shelley A. Knust
 Michael E. & Karen Wade
 Mr. T. SnowWolf Wagner
 Ms. Lisa M. Wagoner
 Ken R. & Lynn H. Wakefield
 Mr. William M. Walasinski &
 Ms. Marie E. Theobald
 Mr. Alan Walden &

Mr. Brandon Phelps
 Mr. & Mrs. Steven B. Walker
 Ms. Donna J. Walle
 Mr. & Mrs. Donn Walling
 Mr. & Mrs. Gregory Wallis
 Mr. & Mrs. Ed Walpe
 Dr. Kelda H. Walsh &
 Dr. Laurence E. Walsh
 Summer L. & Elizabeth B. Walters
 Mr. Doug Wamser
 Mr. & Mrs. E. Michael Warden
 Rebecca L. Warren
 Mr. Charles Warren
 Marcie Wasil
 Ms. Sherry L. Watkins
 Mr. & Mrs. Hugh Watson
 Mr. Paul Watson
 Mr. & Mrs. Christopher B. Weaver
 Ms. Bree A. Weaver &
 Mr. Daniel S. Miller
 Joseph Weaver
 Merry L. & James M. Weber
 Joel N. & Janet H. Weber
 Mr. & Mrs. David Webster
 Mr. Alan J. Welch
 Ms. Tina M. Weldon
 Dr. & Mrs. Gordon D. Welk
 Mr. & Mrs. Lawrence E. Welker
 Mrs. Joyce A. Welkie
 Mr. Roger E. Werner
 Mrs. Betty Wesley
 Mr. Harry M. Wessel
 Ms. Marcella West
 Steven P. & Steven P. Westby
 Gary Westman
 Miss Vivian J. Wetzel
 Edward L. & Mary P. Wheeler
 Patricia H. Wheeler
 Larry D. Whisler
 Ms. Terry F. White &
 Dr. Robert W. White
 Mr. Nathan A. White &
 Mrs. Kristy Bryan
 Mr. & Mrs. Robert F. White
 Ms. Sandy L. White
 Mr. Joe Whitsett &
 Ms. Julie Whitsett
 Ken & Karen Wichman
 Ms. Katherine L. Wicker
 Mr. & Mrs. Stuart Wiler
 Ms. Carolyn M. Wiley
 Mr. & Mrs. Tim Wiley
 Hugh Wiley
 Ms. Jean WilfongHowell
 Ms. Karen S. Wilkerson
 Ms. Harriet Wilkins
 Kathleen M. Wilkinson
 Mr. R. Dean Willey
 Carla Williams
 Mr. & Mrs. Robert D. Williams
 Jan & C. E. Willis
 Mr. Joe Willis &
 Sandi K. Wagner-Willis
 Ms. Della J. Willmann
 Ms. Edie R. Wilmot
 Mr. James H. Wilson
 Edna A. Wilson
 Mr. & Mrs. Brent Wilson
 Gary & Ellen Wilson
 Ms. Janet L. Wilson
 Janet S. Wilzbacher
 Mr. Peter Wingard
 Mr. & Mrs. Roy Winkler

Mr. & Mrs. William J. Winn
 Ms. Gayla C. Willson
 Robin E. Winston
 Mr. & Mrs. Frederick G. Winters &
 Mr. Frederick G.
 Ms. Laurie Winther
 Mr. Eric Wise & Mr. Josh Wise
 Mr. Christopher J. Wishmire
 Mr. & Mrs. Daniel A. Wisley
 Mr. & Mrs. Paul R. Wissler
 Mr. & Mrs. David A. Withey
 Mr. David A. Wohlreich
 Mr. & Mrs. William H. Wolf
 Mrs. Jodi Wolfe
 Mr. Robert A. Wood
 Ms. Patricia K. Wood
 Mr. Russ Woodard
 Mr. Harold D. Woodman
 Mr. Brad Woodward
 Mr. & Mrs. Ty Wooten
 Mr. Alson D. Wright
 Mr. & Mrs. Richard C. Wright
 Ms. Susan E. Wright
 Mrs. Constance A. Wright
 Sharon Wright
 Mr. Timothy Wright
 Mr. Randy Wright
 Mr. Ken Wuethrich
 Mr. Paul E. Wyatt & Wyatt
 Group Inc
 Mr. & Mrs. Ron G. Wyatt
 Mr. Charles Wyeth
 Noriko Yagi
 Mr. Thomas L. Yahne
 Grace Yamamoto
 Ms. Margaret S. Yarber
 Mr. Jay Yeager &
 Ms. Candance A. Grass
 Dr. & Mrs. Robert D. Yee
 Mr. & Mrs. Kenneth J. Yerkes
 Yvonne Yip
 Mr. & Mrs. Richard Yoho
 Mrs. Mary C. Young
 Mr. Richard A. Young &
 Wilma Coran
 Mrs. Kathy R. Young
 Mr. & Mrs. Jim S. Young
 Mr. & Mrs. Jeffrey Zaniker
 Mr. Thomas G. Zeabart
 Mr. & Mrs. Robert W. Zembrodt
 Alan & Mary Zerkel
 Mr. Chen Zhang
 Ms. Susan L. Zilisich
 June Zinn

The Sound Vision Society listings reflect donor contributions between \$250 and \$999 between January 1, 2009 and December 31, 2009. Every effort has been made to ensure the accuracy of this list. Please accept our apologies for any inadvertent errors or omissions. Please send corrections or questions to Theresa Tetrault, director of development & strategic gifts, WFYI, 1630 N. Meridian St., Indianapolis, IN 46202; call (317) 614-0439 or e-mail ttetrault@wfyi.org

IRIS

WFYI's Indiana Reading and Information Services (IRIS) provides around-the-clock access to the written word through both local broadcast service and a statewide toll-free telephone access system. Each day more than 3,200 Hoosiers with reading-impairments have access to newspapers, magazines, literary works and more through IRIS. Thank you to the more than 400 community volunteers who help make this possible. And those who contributed in 2009.

\$10,000+

Ruth Lilly Philanthropic Foundation/United Way Of Central Indiana

\$2,500 - \$5,000

Nicholas H. Noyes, Jr. Memorial Foundation, Inc.

\$1,000 - \$2,499

Baldwin & Lyons, Inc
 Mr. & Mrs. Eugene B. Glick
 Special People In Need

\$250 - \$999

Chris & Teresa Bradburn
 Ms. Robin J. Meyer
 Mr. & Mrs. David L. Richardson
 Leigh Wall Harris & Gary Thompson
 Gregory & Appel Insurance

PLANNED GIFTS

WFYI recognizes and honors viewers and listeners who have planned for the continuation of great public broadcasting programs through their estate plans. The consideration of the donors listed below ensures the success of public broadcasting in our community in perpetuity. For more information about including WFYI in your estate plans, please contact Theresa Tetrault, director of development, at (317) 614-0439 or ttetrault@wfyi.org

Mr. Hoover Baker*
 Roseanne Bonjouklian
 Gen. Branigin Estate*
 Mr. Don A. Brown*
 Mrs. Herman A. Dettwiler*
 George Elliott Trust*
 Christi G. Garcia
 Earl Harris* Charitable Trust
 Dorothy G. Helmer*
 Kimberly S. Hignite*
 Louise Lage Kirland*
 Howard V. Kuder M.D.*
 Ruth MacDaniel Endowment*
 Nancy L. Forbes MacDaniel*
 Mrs. Mildred McCafferty*
 Bernice M. Penrod*
 Dr. & Mrs. George F. Rapp
 Miss Sally Reahard*
 Mr. & Mrs. Richard H. Riegner
 Virginia L. Roberts*
 Dorothy L. Roby*
 Alice M. Ross*
 Mr. E. Paul Smith
 Clara Van Dyke Endowment*
 Howard S. Wilcox*
 R. Dean Willey

* deceased

MEMORIALS & TRIBUTES

What a wonderful way to honor or pay tribute to a friend, loved one or someone special in your life. WFYI accepts both honor and memorial gifts. Please call (317) 614-0439 for more information.

In Memory of William C. Griffith, Jr.
 The Brave Heart Foundation

In Honor of the Dedication of
 Yvonne Shaheen to Community
 Health Network

Community Health Network
 Foundation

In Honor of The Marabeth Young
 Charitable Trust

Daniel A. Young

2009 LEADERSHIP GIVING TO WFYI

GRANT SUPPORT

Foundation & Production Funding \$20,000+

Corporation For Public Broadcasting
Christel DeHaan Family Foundation
Margaret A. Cargill Foundation
KETC
KSM Business Serv.
Indiana Regional Sewer District
KCET

MISSION SOCIETY

The Mission Society is the highest level of corporate giving to WFYI. Mission Society members allow WFYI to fulfill its mission to serve as a community resource by providing educational and cultural services and entertainment through television and radio programs, community outreach and activities.

BioCrossroads
Butler University
CICOA Aging & In-Home Solutions
Clarian Health
Clowes Memorial Hall
Eiteljorg Museum
Fairbanks
Goelzer Investment Management, Inc.
Ice Miller
Indiana State Museum & Historic Sites
Indianapolis Public Schools
Indianapolis Symphony Orchestra
Marsh Supermarkets
Nature Conservancy
St. Vincent Health
Terry Lee Honda

CORPORATE SPONSORS

21st Amendment
5 Metacom
A2 Design
AAA Hoosier Insurance
ACLU of Indiana
AIT Laboratories
Alligator Records
American Guild of Organists
American Pianists Association
American Red Cross of Greater Indianapolis
Andy Mohr Mitsubishi
Anthem Blue Cross and Blue Shield, Indiana
Apparatus, Inc.
Arbonne
Arthur Murray Dance Studio
Arts A Poppin'
Arts Council of Indianapolis
Association of Fundraising Professionals
Axis Architecture & Interiors
B.B. King
Baker & Daniels
Ball State University
Ball State University / Emens Auditorium
Barnes & Thornburg
Barrington Jewels
Barth Electric
Bellies & Babies Expo

Belmont University
Benefit Associates
Bingham McHale
Bio Crossroads
Boney James
Bonnie Raitt
Borshoff
Bose McKinney & Evans
Bosma Enterprises
Brandi Carlile
Brebeuf Jesuit Prep School
Broad Ripple Music Festival
Bruce Hornsby
Butler University
Career Investments
Carmel Clay Education Foundation
Carmel Redevelopment Commission
Carmel Symphony Orchestra
Cathedral High School
Celtic Woman
Center for Inquiry Indiana
Center on Philanthropy at Indiana University
Central Indiana Cancer Centers
CH Douglas & Gray Wealth Advisors
Children's Museum of Indianapolis
Children's Museum of Indianapolis
Chinese New Year Spectacular
Christ Church Cathedral
Christian Theological Seminary
CICOA Aging & In-Home Solutions
CIT E SCAPES
Citizens Gas
Clarian Health
Clark Appliance Showcase
Clowes Memorial Hall
Coalition for Homeless Intervention & Prevention
Colliers Turley Martin Tucker
Concentrics Research
Confucius Institute in Indianapolis
Conner Prairie
Conour Law Firm
Crew Technical Services
CyberKnife Center of Indianapolis
Damar Services
Dance Kaleidoscope
Delivra
Doehrman Chamberlain
Early Music Festival
Earth House Collective
Easter Seals Crossroads
Rehabilitation Center
Economic Club of Indiana
Eiteljorg Museum
Employers Security Insurance Company
Encore Vocal Arts
Ensemble Music Society
Equal Employment Opportunity Commission
Executive Media Communications Consultants
Fairbanks
Farm Fresh Delivery
Fifth Third Bank
Fisher College of Business
Flanner & Buchanan Funeral Centers
Food, Farm & Energy Show
Forecastle Festival
Foundation for Responsible Television
Fountain Square Merchants Association
Fox Television
Franklin College
Franklin University of Ohio
Frasier's Gourmet Foods

French Lick Resort
Frost Brown Todd
FX Television
GasAmerica Services Inc.
Global Gifts
Goelzer Investment Management, Inc
Goulding & Wood, Inc
Green Savings Indy
Gregory & Appel Insurance
Gymboree
Half Price Books
Hamernik & Associates, LLC
Hancock Telecom
Hanover College
Health Foundation of Greater Indianapolis
Heartland Film Festival
Holy Trinity Greek Orthodox Church
Honda/Washington DC
Hoosier Antiques Show
Hoosier Environmental Council
Human Resource Association of Central Indiana
Humana
Ice Miller
IHETS/Indiana College Network
Imagine Hope Counseling Group
Imagine Schools
Impact 100
Indiana Abraham Lincoln Bicentennial Commission
Indiana Ballet Company
Indiana Commission on Hispanic/Latino Affairs
Indiana Council on World Affairs
Indiana CPA Society
Indiana Dental Association
Indiana Falun Dafa Association Inc.
Indiana Farm Bureau Insurance
Indiana Historical Society
Indiana Legal Services
Indiana Partnerships Center
Indiana Repertory Theatre
Indiana State Fair
Indiana State Historic Sites
Indiana State Museum
Indiana State Park Inns
Indiana State Parks and Reservoirs
Indiana State University
Indiana Therapeutic Massage School
Indiana University Football
Indiana Wine Grape Council
Indianapolis Art Center
Indianapolis Chamber of Commerce
Indianapolis Chamber Orchestra
Indianapolis Children's Choir
Indianapolis City Ballet
Indianapolis City Market
Indianapolis Civic Theatre
Indianapolis-Marion County Public Library
Indianapolis Museum of Art
Indianapolis Museum of Contemporary Art
Indianapolis Neighborhood Housing Partnership
Indianapolis Opera
Indianapolis Public Schools
Indianapolis Symphonic Choir
Indianapolis Symphony Orchestra
Indianapolis Theatre Fringe Festival
INDIEanna Handicraft Exchange
Indy Adventure Boot Camp
Indy Baby Expo
Indy Baroque, Inc.
Indy Jazz Festival
Indy Pride Inc
Indy Reads

IndyGo
IndyParentSource
Indy's Child
Inspire.IN.Gov
International School of Indiana
International Violin Competition of Indianapolis
Invoke Studio
IU Medical Group
IUPUI
IUPUI Library
IUPUI Medical Humanities
IUPUI/Lugar Center for Renewable Energy
Ivy Tech Community College
J.D. Resley Associates
Jacquies Gourmet Catering
Jam Productions
James Taylor
JCC
Jocham Harden Dimick Jackson, PC
Joe Bonamassa
John Tesh Concert
Johnson Grossnickle & Assoc., Inc.
Josephson Wallack & Munshower Neurology
Katz & Korin, PC
Keller and Keller
Kelley School of Business
Kendrick Regional Center for Colon & Rectal Care
Kenny Chesney
Key Bank
Key Learning Community School
Kidslinked.com
Kightlinger & Gray
Kindred Healthcare
Kroger, Gardis & Regas
La Plaza, Inc.
Lamse Wellness Clinic
La Plaza, Inc.
League of Women Voters of Indianapolis
LearningRx Indianapolis
LePeep Restaurants
Lincoln Amphitheatre
Lisa Thomas Creative Services
Live Nation
LJ Promotions, LLC
M & I Wealth Management Corporate
MacExperience
Mark M. Holeman, Inc
Marsh Supermarkets
Martin University
Mass Ave East End Shoppes
Mass Ave Wine Shoppe
Mass. Ave Holiday
Mass. Ave. Fall Gallery Walk
Mass. Ave. Merchants Association
MassMutual
Med Flory Jazz and Blues Festival
Meridian Farmers' Market
Meridian North Imaging Center
Methodist Arts & Antiques
Methodist Medical Group
Methodist Sports Medicine
Michael Feinstein Foundation
Mike Birbiglia
Milestone Advisors
Miller Consulting Group
Mindfulness at the Center
Mini
MobiLabs
Moe's Southwest Grill
Montessori Academy of Indianapolis
MP Rathke, Inc.
Murat Shrine Circus

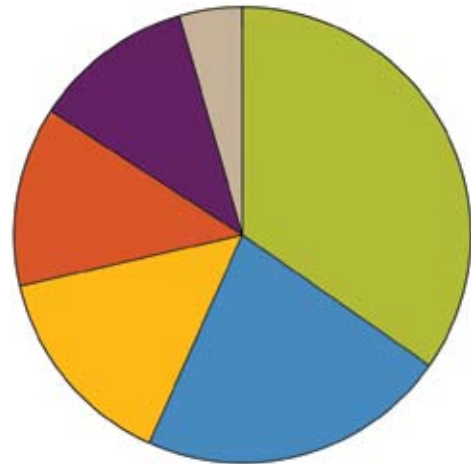
Murphy, McClary, Stover & Burnett, LLC
National Center of Excellence in Women's Health
National City Bank
Nature Conservancy
Neko Case
Net Heads
Networks Financial Institute
Nickel Plate Arts Trail
NIFS National Institute for Fitness & Sport
Nina Mason Pulliam Charitable Trust
Noble of Indiana
North Central High School
Northminster Presbyterian Church
Northview Church of the Brethren
NPower Indiana
Nurture
Office of Faith-Based and Community Initiatives
Ogletree, Deakins, Nash, Smoak, & Stewart
Old National Bank
Olin Business School / Washington University
OneAmerica
Orchard in Bloom
Outback Concerts
Park Tudor School
Pearson Partners
Piano Solutions
Pike High School
Pike Performing Arts Center
Planned Investment Company, Inc
Planned Parenthood of Indiana
Play Piano in a Flash
Plews Shadley Racher & Braun
Port-to-Port Consulting
Posh Petals
PPI Mana
President Benjamin Harrison Home
Primary Colours
Printing Partners
Priority Access
ProLiance Energy, LLC
Purdue Convocations
R J Pile & Company
R.E. Dimond and Associates
Ratio Architects
REI Investments
Republic Services
Richard Lugar Franciscan Center for Global Studies
Riley University for Children
Ritz Charles
Riverview Memorial Foundation
Road Pictures
Ronen Chamber Ensemble
Rose-Hulman Institute of Technology
Ronnebohm Construction
Ruth's Chris Steak House
Sagamore Institute for Policy Research
Scotts Miracle Gro
Second Helpings, Inc.
Second Presbyterian Church
Shepherd Community Center
Sherman & Company
Silver in the City
Simon Circle Centre
Simon Property Group
Small Box Web Design
South Madison Community Foundation
Southern Indiana Tourism
Speaking of Women's Health - PSA

St. Alban's Episcopal Church
St. Luke Catholic School
St. Paul's Episcopal Church
St. Vincent Health
Star Wars Live
Stock Yards Bank
Storytelling Arts of Indiana
Supportive Systems, LLC
Switzerland County Convention & Visitors Bureau
Tabbert Hahn Earnest & Weddle
Tabernacle Presbyterian Church
Terry Lee Honda
The Art of Living
The Best Chocolate in Town
The Box Shoppe
The Eagles
The Great Frame Up
The Mothers Circle
The Promotion Company
The Rug Gallery of Zionsville
The Sanctuary: The Art of Nancy Noel
The Spirit & Place Festival
The Stutz Artist Association
The Swell Season
The Villa Inn
Tire Barn
Tobias Center for Leadership Excellence
Traders Point Creamery
Traders Point Horse Show
Trinity Episcopal Church
Triton Solutions
Troy Risk, Inc.
Tupperware
U.S. Oncology
Union Institute & University
Unite 2 Fight: Race Against Prostate Cancer
United Way
University of Indianapolis
University of Notre Dame
Unsung Indy
Printing Partners
Urban Farmer Seeds
Urology of Indiana
USA Funds
Usborne Books
Veolia Water
Viking Sewing Galleries
Village Child Performing Arts Center
Walking with Dinosaurs
Warren Central High School
Wasatch Lake
Wellness Team Inc.
White River State Park
Whitewater Valley Railroad
Whole Foods Market
Wilson, Kehoe & Wingham
Woodley Farra
Work Smart Systems
YMCA of Greater Indianapolis
Youth Connections
Zionsville Chamber of Commerce

2009 FINANCIAL REVIEW

SOURCES OF REVENUE

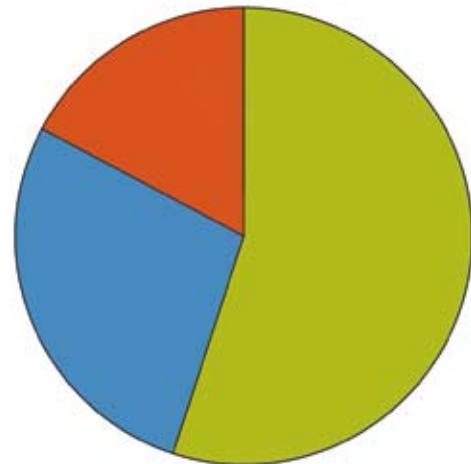
■ Membership/Individuals	\$3,396,119	35%
■ Underwriting/Corporate	\$2,162,916	22%
■ Government Support	\$1,441,495	15%
■ Grants & Other Support	\$1,239,312	13%
■ Special Events	\$431,966	4%
■ Miscellaneous	\$1,123,213	11%
Total Revenue*	\$9,795,021	100%



*State funding unexpectedly cut by 50% (\$241,108) in late 2009.

EXPENSES

■ Program Services	\$5,460,917	55%
■ Fund Raising	\$2,776,839	28%
■ Management/General	\$1,698,217	17%
Total Expenses	\$9,935,972	100%



2009 AWARD

PBS Award

Overall Development

Recognizing excellence and innovative fundraising efforts, that are both replicable and sustainable while keeping true to the public broadcasting mission.

WFYI RAISED
\$2,162,916
 IN CORPORATE SUPPORT
 IN 2009

WFYI

METROPOLITAN INDIANAPOLIS PUBLIC BROADCASTING BOARD OF DIRECTORS

Chair

David G. Sease

Past Chair

Norman G. Tabler, Jr.

Vice Chair

Barbara E. Branick

Treasurer

David A. Resnick

Secretary

Charles M. Blair

President

Lloyd Wright

Executive Committee Members

Julie A. Davis

Eric L. Gillispie

Cathy W. Lawson

Richard P. Roberts

Yvonne H. Shaheen

Board of Directors

David A. Arland

Michael Barth III

Frank M. Basile

Theodore R. Boehm

Richard J. Cockrum

Dennis Dye

Frederick Garver

Nadine Givens

Michael N. Heaton

Nancy Huber

Ken Inskeep

Eric R. Johnson

Donald J. Koors

Gareth W. Kuhl

Mary Lisher

Carey B. Lykins

Mandy Moore

Jim Morris

Dr. James G. Moseley

Patricia A. Poehler

Rebecca C. Polak

Peter P. Polit

Joyce Q. Rogers

Dan Schluge

Angela Sekston

Jenelle Smagala

Caroline Requiz Smith

Neelu Sondhi

Norman G. Tabler, Jr.

Amy Conrad Warner

Debra Simmons Wilson

Life Directors

Diana W. Davis

John R. Walsh

WFYI SENIOR STAFF

President and CEO

Lloyd Wright

Executive Vice President

Jeanelle Adamak

Executive Vice President

Alan Cloe

Vice President of Audio Services and TV Programming

Richard Miles

Vice President of Communications

Rena Barraclough

Vice President of Engineering

Steve Jensen

Vice President of Finance

Anthony Lorenz

Vice President of WFYI Productions

Clayton Taylor

Vice President Organizational Relations

Judy Muessig

Director of Accounting

Kathy Billiard

Director of Building Services

Jerry Herald

Director of Corporate and Foundation Relations

Kristina Uland

Director of Engineering

Nate Pass

Director of Information Services

O'Brian Childs

Director of Learning Services

Gail Thomas Strong

Director of Media Relations

Lori Plummer

Director of Membership and Donor Relations

Michael Sharp

Director of On-Air Promotions and Branding

Myke Perrey

Director of Production Operations

David DeMunbrun

Director of Radio Operations

Roxanna Caldwell

Director of Strategic Gifts and Capital Campaign

Theresa Tetrault

Television Art Director

Judi Border



Buddy, star of the PBS KIDS program *Dinosaur Train*, poses for a photo in front of WFYI.

EDITORIAL STAFF

Editor

Doug Jagers

Communications Design Manager

Russ Wadler

Vice President of Communications

Rena Barraclough

Executive Vice President

Jeanelle Adamak

Copyright © 2009 Metropolitan
Indianapolis Public Broadcasting, Inc.
All rights reserved.



1630 N. MERIDIAN ST.
INDIANAPOLIS, IN 46202
WFYI.ORG

Non-Profit Org.
U.S. Postage
PAID
Indianapolis, IN
Permit No. 3283

