

Wharton Initiative for Global Environmental Leadership IGEL Highlights

2007 – 2020

Celebrating our Accomplishments

IGEL's Mission



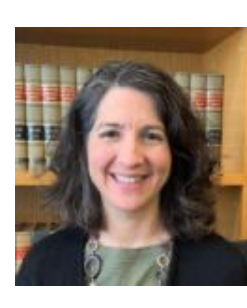
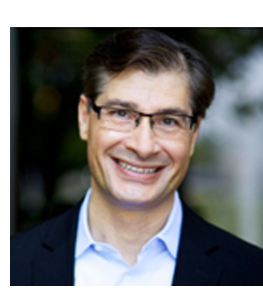
To develop, disseminate, and promote knowledge for business sustainability on a global scale through the exchange of insightful academic directive and industry best practices, in order to prepare the current and next generation of leaders to uncover profitable business solutions addressing environmental concerns.



Organizational Partners



Academic Advisors



Carolyn Kousky
Executive Director
Wharton Risk Center

Howard Kunreuther
Co-Director
Risk Management and
Decision Processes Center

Arthur van Benthem
*Assistant Professor of
Business Economics and
Public Policy*
The Wharton School

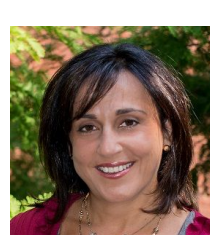
Gary Survis
Lecturer
Master of Environmental
Studies Program

Witold Henisz
Director
Wharton Political Risk
Lab

Sarah Light
*Associate Professor of
Legal Studies &
Business Ethics*

Sanjay Patnaik
*Department of Strategic
Management and Public Policy*
George Washington University
(GWU) School of Business

George Day
*Geoffrey T. Boisi
Professor Emeritus*
The Wharton School



Mark Alan Hughes
Professor of Practice
Weitzman School of
Design

Andy Huemmler
Senior Lecturer
Chemical and
Biomolecular Engineering

Maria Andrews
*Associate Director of
Undergraduate
Programs*
Department of Earth
and Environmental
Science

Susan Wachter
Professor of Finance
The Wharton School

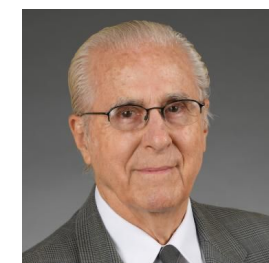
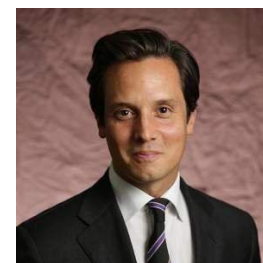
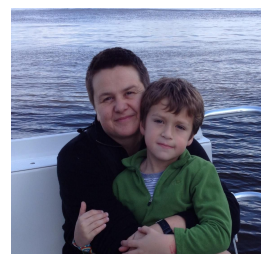
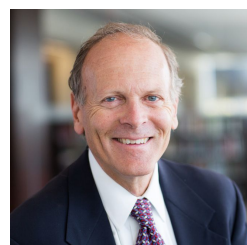
Mauro Guillen
*Professor of
Management*
The Wharton School

Bill Laufer
Director
The Carol and
Lawrence Zicklin
Center for Business
Ethics Research

Mike Useem
Director
Center for
Leadership and
Change
Management

Robert Giegengack
Professor
Department of Earth
and Environmental
Science

Stan Laskowski
Lecturer
Department of Earth and
Environmental Science



Yvette Bordeaux
Director
Professional
Masters Programs
in Earth and
Environmental
Science

Alan Barstow
Director
Organizational
Dynamics

Steve Finn
Professor
Global Pennovation

Sally Cardy
Administrative Director
Professional Masters
Programs

John Giordano
*Assistant
Commissioner*
NJ Department of
Environmental
Protection

Trevor Penning
Professor
Perelman School of
Medicine

John Keene
*Professor
Emeritus*
City and Regional
Planning

Ted Emmett
Professor
Perelman School
of Medicine

Alumni Advisors



Bernard David
Chairman
The Global CO2 Initiative



Millicent Pitts
CEO & Executive Director
Ocean Exchange



Karissa Krusa
President
Sonoma County
Winegrowers



Andreas Gruson
Executive Chairman
Compology



Kendra Morris
*Director of Business
Development*
Suez



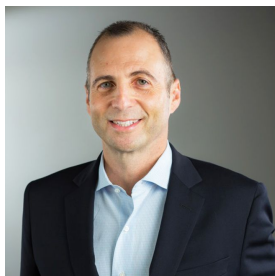
Roland Van der Meer
*President, CIO,
Co-Founder*
Resonant
Technologies Group



Samantha Klug
*Business Strategy
Manager*
Accenture



Patrick Cairo
President
PCAIRO Management
Consulting



Jon Freedman
*Senior Vice President,
Global Government Affairs*
Suez Water



Marissa Rosen
*Media Campaign
Advisor*
ClimateSAN



Amy Ochsenreiter
*Director, Enterprise
Priorities*
GAF



Bert Barnes
*Sustainability and
Giving Manager*
Beautycounter



Aaron Ratner
Managing Director
Ultra Capital



Omar Blayton
CFO
Sunwealth



Ron Ben-Zeev
Founder
World Housing
Solution



Geof Rochester
Founder
GRC Advising



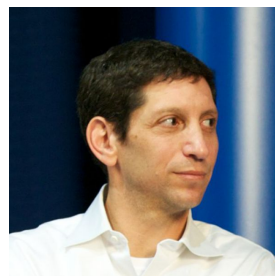
Dakota Dobbins
Senior Consultant
Geneva Global



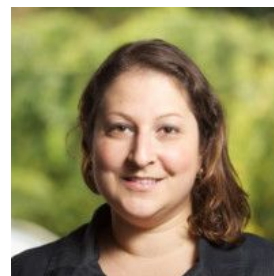
Silvia Schmid
Program Manager
EcoVadis



Andrew Chung
*Founder & Managing
Partner*
1955 Capital



Rob Bernard
*Global Head of
Strategic Partnerships*
National Geographic
Society



Emily Schapira
Executive Director
Philadelphia Energy
Authority



Shauna Sadowski
*Head of Sustainability-
Natural and Organic
Unit*
General Mills



Caroline D'Angelo
*Lead, Green Diplomacy
Initiative*
U.S. Department of
State



Nathan Sell
Technical Writer
U.S. EPA

Academic Curriculum



MBA Major: Business, Energy, Environmental and Sustainability (BEES)

The BEES major examines the relationship between business and the natural environment, including human health and safety as well as addressing a range of policy issues.

MBA/Master of Environmental Studies Joint Degree

This joint degree complements and enhances Wharton's multi-disciplinary approach to integrating knowledge and advancing educational goals in the business and environment sectors.

Undergraduate Concentration or Minor in Environmental Policy and Management

The undergrad focus is designed to provide in-depth foundations for those interested in the complex relationships between business and the natural environment, management of environmental risks, and the business and economics of energy.



Executive Education Programs



2012 Program:

Thanks to the generosity of **SAP**, IGEL had its first Business Sustainability Leadership Executive Education program in June 2012 at the Wharton San Francisco campus. The inaugural class of business executives had three days of training in leadership, environmental management and more.



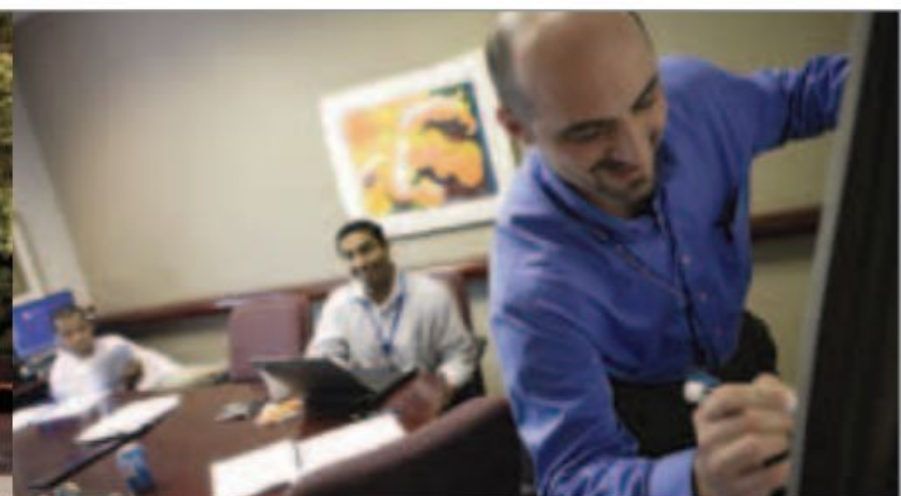
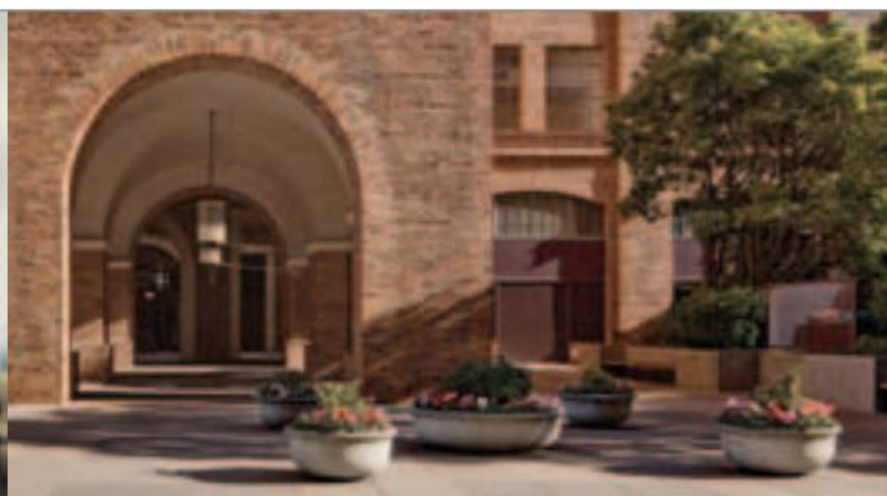
SESSION TOPICS

- Sustainability as a Competitive Advantage
- Financial Valuation of Stakeholder Management
- Scenario Planning
- Leadership & Change Management
- Technology's Role in Sustainability
- Best Industry Practices in Sustainability



2014 Program:

The Wharton School's 2014 Environmental Sustainability Leadership Executive Education program of the Aresty Institute of Executive Education was made possible thanks to the generous sponsorship of **Merck**.



IGEL Conferences



2019 12th Annual Conference

The Wharton Initiative for Global Environmental Leadership
12th Annual Conference



The End of the World as We Know It?
The Consequences of Extreme Climatic Disruption for Business and Democracy
21st Annual Conference
The Wharton Initiative for Global Environmental Leadership

2018 11th Annual Conference



Smart Utilities: A Bridge To Smart Cities of the Future

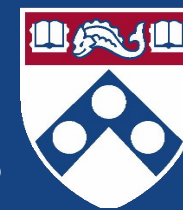
Wednesday, September 27, 2017
8:30am – 2:00pm

8th Floor, Jon M. Huntsman Hall
The Wharton School, University of Pennsylvania
Philadelphia, PA

2017 10th Annual Conference



Wharton/Bank of America Global Environmental Leadership Global Forums



Wharton
UNIVERSITY of PENNSYLVANIA

The Speaker Series featured a prominent global environmental leader as the keynote speaker during the annual event held in coordination with Wharton's Global Alumni Forums



BANK OF AMERICA



Women in Sustainability Leadership Seminar Series



Mirei Endara de Heras
*Former Panamanian Minister
of Environment*



Emily Landsburg
*Director
Ultra Capital*



Connie Duckworth
*Founder and CEO
Arzu Studio Hope*



Anne Papageorge
*VP of Facilities & Real Estate
UPenn*



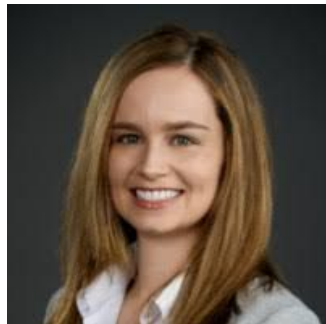
Leslie Nadine
*CEO
SUEZ North America*



Lisa Conway
*Vice President of Sustainability
Interface*



Maria Negrete-Gruson
*CFA, Managing Director
Artisan Partners*



Elizabeth Montoya
*Chief of Protocol & IR
Rubicon*



Jane Mosbacher Morris
*CEO
To The Market*



Kim Rumph
*President
Terminix Residential*



Korinti Recalde
*SVP of Sustainability
United Technologies*



Laurie Holmquist
*General Manager,
Delta Air Lines*



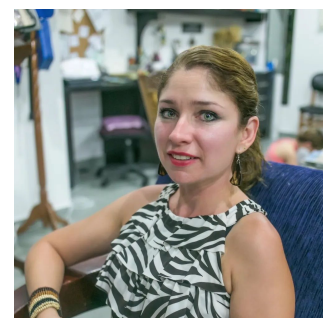
Paulette Frank
*Worldwide VP of Sustainability
Johnson & Johnson*



Catherine Ricou
*SVP Environmental Services
SUEZ North America*



Linda Froelich
*Global Sustainability Director
FMC Corp*



Angelita Fasnacht- Cuellar
*Board Member
Global Water Alliance*



Maureen Anastasia
*Senior Managing Director
CBRE*



Haley Russell
*Co-Founder,
Chippin*

Women in Sustainability Leadership Seminar Series



Mirei Endara de Heras
*Former Panamanian Minister
of Environment*



Emily Landsburg
*Director
Ultra Capital*



Connie Duckworth
*Founder and CEO
Arzu Studio Hope*



Anne Papageorge
*VP of Facilities & Real Estate
UPenn*



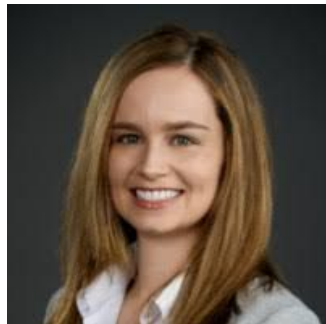
Leslie Nadine
*CEO
SUEZ North America*



Lisa Conway
*Vice President of Sustainability
Interface*



Maria Negrete-Gruson
*CFA, Managing Director
Artisan Partners*



Elizabeth Montoya
*Chief of Protocol & IR
Rubicon*



Jane Mosbacher Morris
*CEO
To The Market*



Kim Rumph
*President
Terminix Residential*



Korinti Recalde
*SVP of Sustainability
United Technologies*



Laurie Holmquist
*General Manager,
Delta Air Lines*



Paulette Frank
*Worldwide VP of Sustainability
Johnson & Johnson*



Catherine Ricou
*SVP Environmental Services
SUEZ North America*



Linda Froelich
*Global Sustainability Director
FMC Corp*



Angelita Fasnacht- Cuellar
*Board Member
Global Water Alliance*



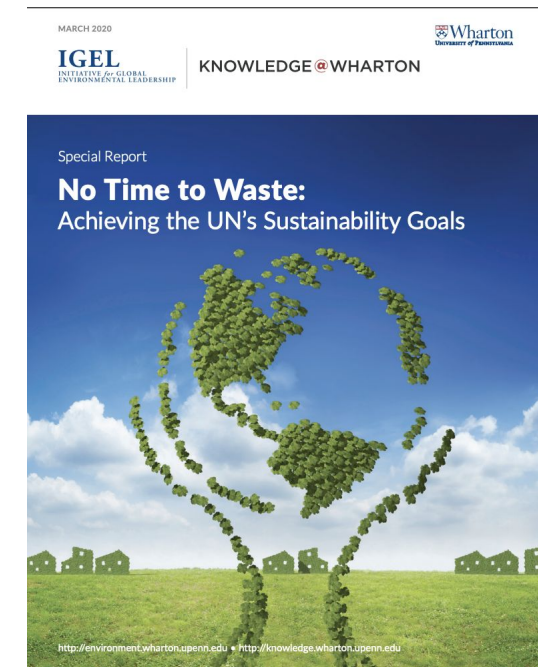
Maureen Anastasia
*Senior Managing Director
CBRE*



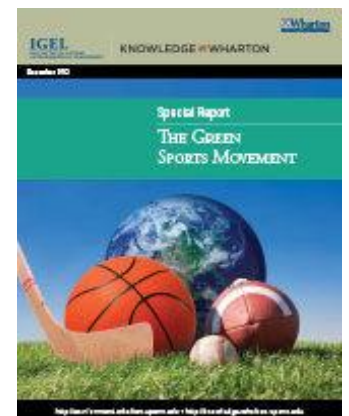
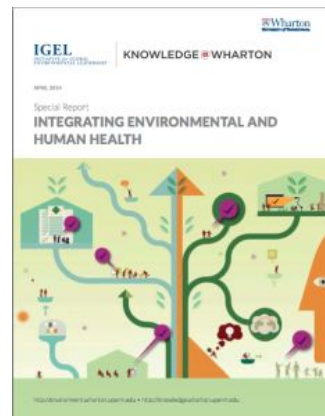
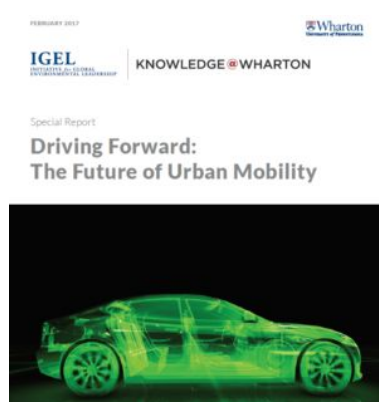
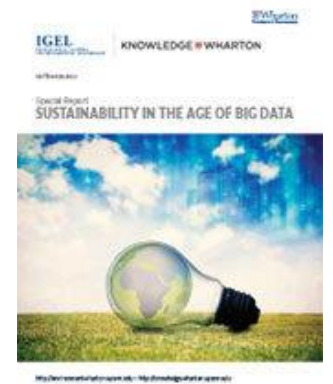
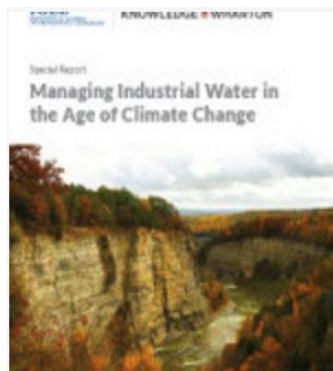
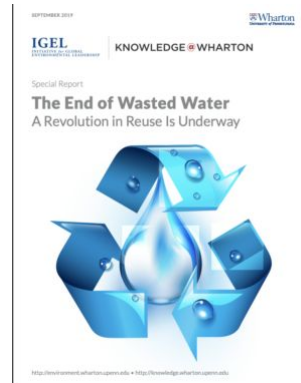
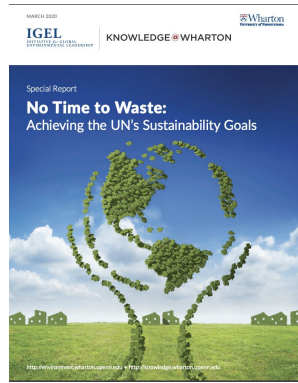
Haley Russell
*Co-Founder,
Chippin*

KNOWLEDGE@WHARTON

Knowledge@Wharton is the online business analysis journal of the Wharton School of the University of Pennsylvania. The site, which is free, captures relevant knowledge generated at Wharton and beyond by offering articles and videos based on research, conferences, speakers, books and interviews with faculty and other experts on global business topics. For almost a decade Wharton IGEL through corporate sponsors has partnered with Knowledge@Wharton to publish dozens of special reports focused on business and environment.



Research Reports



Student Engagement



Wharton IGEL granted six scholarships for MBA students to attend the Antarctica Leadership Ventures in 2009, 2010 and 2011



Wharton IGEL supports ClimateCAP: The Global MBA Summit on Climate, Capital, & Business is an annual event that brings MBA students and industry leaders together to learn what every MBA needs to know about the business implications of climate change.

Partners include:

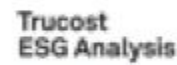


Careers in Sustainability



Wharton IGEL Careers in Sustainability Meet & Greet

featuring



John and Yasmina Giordano



Networking Reception: November 6, 2019: 4:30PM- 6:30PM
Houston Hall, Hall of Flags



2019 Career Event Over 150 Students Registered!



MBA CAREER MANAGEMENT



Wharton MBA Career Management & Wharton IGEL Present
Careers in Sustainability Panel

Afternoon Tea
November 7th, 2018
4:00PM - 5:30PM

Lauder Auditorium
256 South 37th Street
University of Pennsylvania
Philadelphia, PA



2018 Career Event Over 90 Students Registered!



Thank You for Your Commitment to Business & the Environment!



Eric Orts
Director
Guardsmark Professor



Joanne Spigonardo
Senior Associate
Director



Hayley McCurdy
Communications Coordinator
Penn MES '20



Jennifer Lessick
Graduate Intern
Penn MES '21