



Rooted to Grow[®]

www.willowaynurseries.com

**Growing for Generations
Cultivating Relationships for a Lifetime**

Willoway Nurseries, based in Ohio, is a progressive, forward thinking company. Although we are a third generation family-owned business, we are known for always being on the forefront of the horticulture industry with technology, marketing, and growing techniques. We pride ourselves on our established roots and vision to grow for generations into the future.

Quick look at new plants for 2021



New plant ideas for 2021

- This is a starting point to our new plant offerings for 2021. Some will be ready early, and some will become available as the season progresses.
- Sign up for our customer portal for 24/7 availability and other great features. Our sales team can get you started today!
- Be sure to ask about our First Look[®] new plant program. This will give you the first chance at these exciting new plants and also the Handpicked for You[®] list to round out your displays all season long. Our sales team can get you signed up and started in the program.

Allium cernuum

- Soft, grasslike leaves and a 1-2 ft., leafless flowering stalk rise from a bulb. The stem bends so that the pink flowers, borne in a cluster at the top, nod toward the ground
- **Attracts:** Butterflies , Hummingbirds
- Sun Exposure Full Sun
- Height 1' - 2'
- Bloom Color White, Pink
- Bloom Time July, Aug
- Spacing 6" - 1'
- Zones 3



Allium 'Lavender Bubbles'
PP31126

- Dark dusty purple flower globes are produced above attractive glaucous blue-green foliage. The leaf blades twist and curl to provide additional interest. Compared to the popular 'Millenium', 'Lavender Bubbles' blooms later and is a darker shade of purple.
- 12-14"
- Zone 4



Alocasia 'Kuching Mask' PPAF

- A very distinct variety, with a reach of up to 4' wide, Kuching Mask makes a striking specimen. Growing only 2' tall, its dark-green, pointed leaves are accented with off-white, dramatic-looking veins.
- Size: 2' tall by 3-4' wide
- USDA Hardiness Zone: 9-11
- Soil: Average garden soil
- Moisture: Moist, but well-drained

Plants
that Work®



Alocasia Serendipity

- The large green leaves have an unusual crinkled texture and the undersides of the leaves and stems are rich maroon. The large leaves can reach 2-3' long and a mature plant is 4-6' tall.
- Size: 2' tall by 3-4' wide
- USDA Hardiness Zone: 9-11
- Soil: Average garden soil
- Moisture: Moist, but well-drained

Plants
that Work®



***Anemone* 'Curtain Call Pink'** **PPAF**

- This fall blooming Anemone is one of the final performers in your garden for the growing season. Beginning in late summer, this perennial produces bright rose-pink flowers that are positioned right above a small mound of green foliage. The flowers are fuller than single, producing a double row of petals.
- Size: 12-15"
- Sun to part sun
- USDA Hardiness Zone: 4
- Soil: Average garden soil
- Moisture: Moist, but well-drained



Anemone Fall in Love™ 'Sweetly' ppaf

- A fall blooming perennial. Semi-double rose pink flowers are produced above a large mound of dark green foliage.
- Size: 20" tall
- USDA Hardiness Zone: 4
- Soil: Average garden soil
- Moisture: Moist, but well-drained



Azales Electric Lights™ Double Pink

- Stunning double pink flowers smother the plant in early spring. It forms an upright mound in the landscape and will tolerate full sun to part shade. Flower buds are hardy to -30°F. Developed at the University of MN.
- Size: 6ft
- Sun to part sun
- USDA Hardiness Zone: 4
- Soil: Average garden soil
- Moisture: Moist, but well-drained

FIRST®
EDITIONS
SELECTED FOR SUCCESS™



Berberis WorryFree® Crimson Cutie®

- The first in a series of non-invasive Japanese barberries bred and tested by the University of Connecticut, Crimson Cutie will not produce nuisance seedlings or spread to unwanted areas. This replacement for Crimson Pygmy is excellent as a low hedge or border and is deer resistant. Can be used as an accent or foundation plant in addition to a low hedge and border.
- Size: 12-15"
- Sun to part sun
- USDA Hardiness Zone: 4
- Soil: Average garden soil
- Moisture: Moist, but well-drained



WorryFree™
Solutions for Success

Buddleia Buzz™ Series

- The Buzz™ series is the first-ever patio Buddleia. This selection has wands of deep purple flowers, over a mound of green leaves. Drought tolerant. Excellent for cutting. Removing faded flower heads will encourage plants to continue blooming. Drought and heat tolerant, once established.
- Hot Raspberry, Sky Blue and Midnight are some of the colors in the series.
- Size: 30-36"
- Sun to part sun
- USDA Hardiness Zone: 5
- Soil: Average garden soil
- Moisture: Moist, but well-drained



Buddleia Lo & Behold Ruby Chip® ppaf

- Lo & Behold Ruby Chip butterfly bush brings together the best of both, with a tidy 2.5 size and dozens of magenta-ruby flower spikes. Fragrant and long-blooming, it keeps putting out fresh flowers without the need to deadhead
- Size: 30-36"
- Sun to part sun
- USDA Hardiness Zone: 5
- Soil: Average garden soil
- Moisture: Moist, but well-drained



Buddleia 'Grand Cascade'
PP30868
Cascade Collection

- Unlike the typical Butterfly Bush, the panicles on this flowering shrub cascade downward, similar to the look of weeping willow or a bridalwreath spirea. Light lavender purple flower panicles are enormous at 12-14" long and 4" thick.
- Sun
- 5ft
- Zone 5

Plants
that Work®



Buddleia 'Pink Cascade' PP30711
Cascade Collection

- Light apple blossom pink flower panicles are 8-10" long. Minty green leaves, in combination with the flowers, give it overall cool tones.
- Sun
- 5ft
- Zone 5

Plants
that Work®



Buddleia 'Prince Charming'
PP28903
MONARCH® Collection

- The newest addition to the popular MONARCH® Butterfly Bush collection! 'Prince Charming' is truly a color break for the Buddleia genus. 10" long flower spikes will stun you with their bright cerise pink color.
- 3-4ft
- Sun
- Zone 5

Plants
that Work®



Buxus microphylla 'Faulkner'

- This slow growing, dwarf habit means less pruning! Glossy, bright green foliage is densely packed, and takes on a rich bronze tinge during the winter. An exceptional specimen for container or landscape. Easily shaped into a tidy hedge or topiary form.
- Size: 36"
- Sun to part sun
- USDA Hardiness Zone: 5
- Soil: Average garden soil
- Moisture: Moist, but well-drained





Buxus NewGen Freedom® 'SB300' PPAF

- NewGen Freedom® is an excellent boxwood. It was selected due to its high tolerance of Boxwood Blight and resistance to Boxwood Leafminer.
- Size: 36"
- Sun to part sun
- USDA Hardiness Zone: 5
- Soil: Average garden soil
- Moisture: Moist, but well-drained





Buxus NewGen NewGen Independence® 'SB108' PP28888

- NewGen ***Independence***® is an excellent boxwood. It was selected due to its high tolerance of Boxwood Blight and resistance to Boxwood Leafminer.
- This one is a bit smaller and more compact in habit
- Size: 36" X 36"
- Sun to part sun
- USDA Hardiness Zone: 5
- Soil: Average garden soil
- Moisture: Moist, but well-drained



Buxus s. Calgary

- This upright, oval, dark green Boxwood grows to about 3 feet high and wide. Inconspicuous flowers appear in spring, but it is grown for its handsome foliage. Use as hedging or topiary, or in a border.
- Size: 24-30"
- Sun to part sun
- USDA Hardiness Zone: 3
- Soil: Average garden soil
- Moisture: Moist, but well-drained



Calamintha nepeta *ssp. nepeta*

- **2021 Perennial Plant Association Plant of the Year™**
- This sun-loving perennial is the perfect choice for attracting pollinators, since it blooms from early summer until frost. Tiny, white flowers cover the bushy habit. Since this is in the mint family, the leaves carry a mint scent. Perfect for rock garden enthusiasts and herb gardens.
- Zone 5
- Sun
- 12-15"



Calycanthus floridus *Burgundy Spice* PP 28886

- While all other *Calycanthus* have green leaves, this selection shows off purple foliage that you just can't keep your eyes off! Maroon flowers appear in June with a sweet summer scent. These red flowers are a favorite for pollinators and butterflies.
- Height: 6-8 Feet
- Zone: 5-9



Cephalanthus occidentalis ***Red Moon (Blood Moon) New for 2021***

- Height: 6-10 ft
- Spread: 6-10 ft
- Zone: 5-9 What is my zone?
- Superb nectar provider for native pollinators
- Native birds love the seed from it fruit
- Sun to part sun
- Soil: Average garden soil
- Moisture: Moist, but well-drained





Cercis canadensis
Flame Thrower®
PP31260

- This *Cercis* has pink flowers that are followed by unique foliage, emerging burgundy-red, followed by bright yellow and green as it ages. Color display is persistent throughout the season, often showing four to five different shades on a single branch. Developed by the JC Raulston Arboretum at NC State University.
- Size: 15-20'
- Sun to part sun
- USDA Hardiness Zone: 5
- Moisture: Moist, but well-drained

Cercis canadensis
***Rising Sun*[™] pp 21,451**

- Abundant pea-like rosy-lavender flowers appear early spring before foliage. Heart-shaped deep apricot leaves appear and mature through shades of orange, gold and yellow with all colors present at once! Foliage turns a shade of lime green in the summer heat.
- Size: 15-20'
- Sun to part sun
- USDA Hardiness Zone: 5
- Moisture: Moist, but well-drained



Cornus Kousa Scarlet Fire® pp28,311

- A new introduction from Rutgers, Scarlet Fire combines unique color and a long flowering season with disease and pest resistance as well as cold and heat tolerance.
 - Its 5" dark pink and fuchsia flowers last for 6-8 weeks.
 - New leaf growth is tinged with purple, and its dark green leaves turn red in the fall.
-
- Sun Exposure: Full Sun, Partial Shade
 - Height/Habit: 25 feet
 - Spread: 20 feet
 - Spacing: 20 feet
 - Hardiness Zone: 5-9



Coreopsis Darling Clementine Li'l Bang™ Series

- Flowers transition with shades of glowing orange, butterscotch and creamy yellows for multi-color interest. Gold button centers punctuate each twinkling jewel.
- From the Li'l Bang™ Series, the naturally compact habit of Coreopsis Darling Clementine is carefree - disease resistant and long blooming. From master hybridizer, Darrell Probst
- 8-10"
- Zone 5

Plants
that Work®



Coreopsis Lil Bang™ Goldilocks PPAF

- Cute, compact, mildew-resistant counterparts to the famed Big Bang™ collection. Naturally dwarf and branching -- perfect for smaller borders or containers. Sweet buttery yellow petals are cutely cupped and crinkled.
- Sun
- 12"
- Zone 4

Plants
that Work®



Coreopsis UPTICK™ Yellow & Red ('Baluptowed' PP28865) UPTICK™ Series

- This series from Darwin Perennials boasts larger flowers and a longer blooming performance that will impress in the garden centers and landscapes alike. Members of the series look great in the garden all summer long thanks to their tidy, mounded habits. Gardeners will enjoy their low-maintenance requirements and disease resistance.
- Sunny yellow flowers with dark red centers.
- Size: 12-15"
- Sun to part sun
- USDA Hardiness Zone: 5
- Moisture: Moist, but well-drained

Plants
that Work®



Dianthus 'Paint the Town Red' PPAF CPBRA Paint the Town Series

- Members of the Paint the Town Series are prized for their bright colors and increased heat tolerance. This translates to better performance nearly nationwide, even in the heat-loving states. Flowers appear in early summer, and a quick shearing after flowering will encourage them to rebloom in early fall. This is the perfect size to edge the front of the sunny border and use in combination containers.
- 'Paint the Town Red' produces ¾-1", single, deep magenta red flowers and serrated petals. Flowers completely cover the plant when it's in peak. Its glaucous blue foliage set it apart from other Dianthus of its type.
- **Size: 6-8"**
- **Sun to part sun**
- **USDA Hardiness Zone: 4**
- **Moisture: Moist, but well-drained**



Echinacea Artisan™ Collection Red Ombre

- The first F1 hybrid Echinacea individual color collection from seed!
- Offers consistency of plant structure for a uniform, highly branched, full plant.
- Features uniform flowering, so all plants are ready to sell at the same time.

- **Hardiness Zone** : 4a - 10b
- **Blooming Season** : Late Spring, Summer, Autumn, Winter, Late Summer
- **Plant Habit** : Upright
- **Spacing** : 10 - 14" (25 - 36cm)
- **Height** : 16 - 28" (41 - 71cm)
- **Width** : 10 - 25" (25 - 64cm)
- **Exposure** : Sun



Echinacea Artisan™ Collection Soft Orange

- The first F1 hybrid Echinacea individual color collection from seed!
- Offers consistency of plant structure for a uniform, highly branched, full plant.
- Features uniform flowering, so all plants are ready to sell at the same time.

- **Hardiness Zone** : 4a - 10b
- **Blooming Season** : Late Spring, Summer, Autumn, Winter, Late Summer
- **Plant Habit** : Upright
- **Spacing** : 10 - 14" (25 - 36cm)
- **Height** : 16 - 28" (41 - 71cm)
- **Width** : 10 - 25" (25 - 64cm)
- **Exposure** : Sun



Echinacea 'Tanager' PPAF
EYE-CATCHER™ Collection

- A tanager is a type of bird that comes in an array of colors, but most often associated with a brilliant orange red-the perfect namesake for this dramatically colored coneflower. 3½", rich tangerine orange flowers with heavily overlapping petals and dark cones is produced on dark stems above dark foliage. Noted for its incredible basal branching.
- 22" high
- Zone 4



Echinacea Sombrero[®] Rosada

- Single bright rose-pink flowers on purple stems. Floriferous, naturally well-branched and compact habit. From Darwin Perennials[®].
- 18" high
- Zone 4
- Sun



Athyrium 'Godzilla'

Giant Japanese Painted Fern

- Like Athyrium n. 'Pictum' on steroids, this giant painted fern was discovered at Plant Delights Nursery in the mid-90s and is thought to be a sporeling of 'Pictum' and the Lady Fern.
- It forms a massive, arching clump of silvery fronds with green highlights and dark purple stems. Like the Lady Fern, 'Godzilla' spreads slowly where it is happiest in moist, loamy soils.
- Size: 30-36"
- Shade - part sun
- USDA Hardiness Zone: 4
- Moisture: Moist, but well-drained



Gaillardia Spintop Orange Halo PP29205

- Intense orange petals with yellow tips forming a halo around the flower. Large, flat, richly-hued flowers with toothy-tipped petals from spring to fall. Good basal branching makes them tight and compact for excellent container presentation.
- Zone: 3 - 10
- Height: 12 inches
- Full Sun



Gaillardia Spintop Yellow Touch

- Spintop Red will make it far easier with a plant that is dense and compact with strong basal branching making it a knockout in the ground or in a container. Each plant is bathed in big, flat, solid, medium red daisies with just a touch of yellow at the tips of each petal that blooms from late May through early July.
- 10-12"
- Zone 3



Geum TEMPO™ Orange

- Blooms early spring with numerous double to single small cream to peach to orange blooms on short stems. Long blooming. Easy to grow.
- USDA Hardiness Zone(s): 5-9
- Size (HT/W/FL HT): 9" / 16" / 15"
- Exposure: Part Shade, Full Sun



Geranium 'Azure Rush'

PP 22,684

- Geranium 'Azure Rush' hails from Germany, where it was discovered in 2007 as a mutation on Geranium 'Rozanne' by Jan Dirk Schuiver.
- More compact habit than Geranium 'Rozanne', in addition to having slightly lighter lavender flowers.
- Continuous flowering habit. The
- Compact 18" tall x 2' wide clump habit
- Sun
- Zone 5



Plants
that Work[®]

Geum PRETTICOATS™ Peach

- Reblooms all summer here in Oregon. Airy, semi-double, peach flowers in abundance cover this fresh, easy to grow perennial. Amazingly green leaves with a compact habit make it perfect in a pot or in a border.
- USDA Hardiness Zone(s): 5-9
- Size (HT/W/FL HT): 10" / 20" / 12"
- Exposure: Full Sun



Geum TEMPO™ Yellow

- Blooms early spring with numerous semi-double yellow flowers with dark edges on black stems. Long blooming. Bright green leaves grow in a dense mound. Loved by pollinators. Deer resistant. Easy to grow.
- USDA Hardiness Zone(s): 5-9
- Size (HT/W/FL HT): 14" / 24" / 20"
- Exposure: Part Shade, Full Sun



Geum TEMPO™ Rose

- A new favorite! This early bloomer produces a plethora of dark, rose-pink flowers on short, dark stems. This easy to grow plant has a long bloom time allowing pollinators to enjoy this gem for months.
- Zone(s): 5-9
- HT 8"
- Sun



Andropogon gerardii 'Blackhawks' PP27949

- Big Bluestem are perfect for providing height and color to the garden, coming into prime a little earlier than other ornamental grasses. The foliage of 'Blackhawks' emerges deep green to dark purple in spring and deepens to near black by fall.
- Sun
- 5ft
- Zone 3





Calamagrostis x acutiflora Lightning Strike™

- An unusual variegated Calamagrostis. Its leaves have wide creamy white centers and green edges. Topped with fan flowerheads that persist through winter if not cut back. Discovered by Brett Jones of Berry Family Nursery.
- Size: 30-36"
- Sun to part sun
- USDA Hardiness Zone: 4
- Moisture: Moist, but well-drained

Plants
that Work®

Carex 'Feather Falls' PPAF

- Feather Falls presents itself with variegated foliage that spills down the side of the plant. It is deer resistant, easy to grow, and it looks beautiful in containers or hanging baskets where the plant has the ability to cascade down the side.
- Size: 12-18"
- Shade to part sun
- USDA Hardiness Zone: 5
- Moisture: Moist, but well-drained

Plants
that Work®



Pennisetum alopecuroides 'Hush Puppy' PP 31,027

Hush Puppy Fountain Grass

- Pennisetum 'Hush Puppy' is a new and very vigorous fountain grass from the breeding program of Wayne Hanna at the University of Georgia, the result of their fountain grass sterilization program. In our trials, Pennisetum 'Hush Puppy' forms a 3' tall x 4' wide clump that produces a succession of new plumes from early/mid-July (NC), and continuing to fall...an extended flowering season due to a lack of seed production.



*WorryFree*TM
Solutions for Success

Heliopsis helianthoides var. scabra 'Bleeding Hearts'

- Prized as the first seed strain of Heliopsis without yellow on its flowers, this blooms from July until frost. The new flowers emerge intense orange red and mature to golden orange with red centers. Deep green leaves with bronze highlights and black flower stems complete the look. A taller plant suitable to the middle or back of the border.
- Size: 30-36"
- Sun to part sun
- USDA Hardiness Zone: 3
- Moisture: Moist, but well-drained



Helleborus x iburgensis
'Moondance' PPAF
Moondance Hybrid Lenten
Rose

- Helleborus 'Moondance' is the first pure white flowered selection in the Frost Kiss series, forming an 18" tall x 2' wide clump of black-green, silver-veined leaves.
- Starting in Feb/ March, the clumps are topped with 18" tall spikes of white, out-facing flowers.
- 18" tall
- Zone 5

Plants
that Work[®]



Heuchera 'Green Spice'

- A top-seller around the world and great in the shade! Much more color contrast and more vigorous than Heuchera 'Beauty Color'. Its dark gray-edged silver leaves with red venation are smoother and brighter, bigger, and better. Exceptional fall color, which we label as "pumpkin, neon orange."
- Size: 10-12"
- Shade - part sun
- USDA Hardiness Zone: 4
- Moisture: Moist, but well-drained



Heuchera NORTHERN EXPOSURE™ Black

- More clean lines for the landscape with black, round leaves on a medium large mound. This tough garden plant was bred from hardy *H. richardsonii* and looks good longer in the season than other Heuchera. Great rust resistance and longevity.
- USDA Hardiness Zone(s): 3-9
- Size (HT/W/FL HT): 10" / 23" / 28"
- Exposure: Part Shade, Full Sun, Full Shade



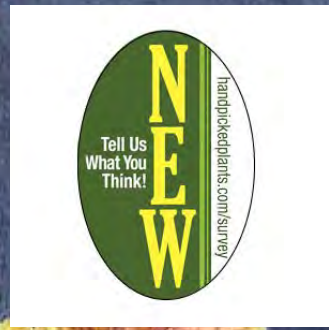
Heuchera NORTHERN EXPOSURE™ Purple

- A great landscape plant with round leaves, a good crown, and purple to silver leaves. With hardy H. richardsonii breeding you get greater cold tolerance and good rust resistance.
- USDA Hardiness Zone(s): 3-9
- Size (HT/W/FL HT): 12" / 20" / 25"
- Exposure: Full Sun, Part Shade, Full Shade



Heuchera NORTHERN EXPOSURE™ Sienna

- Crisp, fresh green leaves in the spring and fall blending to a beautiful sienna orange in the summer. This showy garden plant was bred from hardy *H. richardsonii* and looks good longer in the season than other Heuchera. Long lived, hardy, and rust resistant, this plant is perfect for maintaining clear lines in the landscape.
- USDA Hardiness Zone(s): 4-9
- Size (HT/W/FL HT): 13" / 21" / 22"
- Exposure: Full Sun, Part Shade



Heuchera 'Red Lightning'

- Electrifying dark red veins spark over huge gold leaves. Color holds well throughout the season. 'Red Lightning' is "villosa-strong" and draws your attention from across the garden. Works well in borders and mixed containers.
- Size: 30-36"
- Sun to part sun
- USDA Hardiness Zone: 4
- Moisture: Moist, but well-drained

Plants
that Work®



***Hibiscus* 'French Vanilla' PPAF CPBRA SUMMERIFIC® Collection**

- A new color for the collection and a breakthrough for yellow Hardy Hibiscus. Soft yellow flower buds open to 7-8" creamy custard yellow, ruffled flowers with a prominent red eye. Compared to the industry standard 'Old Yella', this Hibiscus retains its yellow color longer, has a more compact habit, has red stems and deeper green, more attractive foliage, and a very prolific floral production.
- Size:36"
- Sun to part sun
- USDA Hardiness Zone: 4
- Moisture: Moist, but well-drained



Hibiscus 'Starry Starry Night' PP27901

- Walters Gardens, Inc. masterpiece, our darkest foliage Hibiscus to date. Incredibly dark, near-black, broad, maple-like leaves form an upright clump in the landscape. Interesting 7-8" flowers are pale pink with darker pink speckling and veining. The flowers are held on bright green carpels, which contrast nicely with the dark foliage. Flowers are produced from the top to the bottom of the plant, rather than only at the top like some older cultivars.
- Sun
- 3-4 ft
- Zone 4



***Hosta 'Waterslide'* PP30303 CPBRA SHADOWLAND® Collection**

- SHADOWLAND® collection is now well-rounded. 'Waterslide' has wavy, ruffled leaves with heavy substance. The blue, rippled leaves look like water splashing in the shade garden, and hold their blue color well into the summer season. Lavender flowers appear on proportionate flower scapes in late summer. This medium-sized hosta is a perfect companion to 'Wheee!' and suitable for landscapes and containers alike.
- Size: 14"
- Shade-part sun
- USDA Hardiness Zone: 3
- Moisture: Moist, but well-drained



Hydrangea arborescens
Invincibelle Garnetta®
'NCHA6' USPPAF

- Lusciously full mophead pink flowers are only one of the qualities that make Invincibelle Garnetta hydrangea so special. It also boasts supportive, sturdy stems (no blooms laying on the ground here!), a useful compact size, and reblooming ability for months instead of mere weeks of flowers. Blooming a bit later than the rest of the Invincibelle series, it's a fantastic season-extender.
- Size: 30-36"
- Sun
- USDA Hardiness Zone: 3
- Moisture: Moist, but well-drained



Hydrangea mac. Azure Skies™
(‘COF HM1’)
Azure Skies™ Hydrangea: ppaf

- **This is a new hydrangea from Mike Dirr**
- Reblooming and heavy blooming with loads of big mophead flowers
- Stronger summer flower production.
- 4-5ft
- Zone 5



Plants that Work[®]

Hydrangea macrophylla Elizabeth Ashley 'Hokomarore' PPAF

- Cheerful, billowy flowers in taffy pink or soft blue (depending on the soil pH) form round flowerheads so dense, there's hardly room for leaves. A compact grower with strong stems and hard flowers, this consummate gift plant will make an ideal transition from gift to garden. Flowers show their first hint of color in May/June and continue through summer with fresh, new blooms that replace the older ones. A Hydrangea that never stops giving, as flowers mature, they take on deeper, vintage hues of velvety-rose or violet-blue, both with green eyes.
- Size: 3' tall by 3' wide
- USDA Hardiness Zone: 5-9



Hydrangea macrophylla Froggie™

- Froggie is a new mophead hydrangea with unique flower coloration. Flowers are green with pink accents or green with blue accents, to varying degrees.
- Froggie is not a reblooming but has amazing cut flower potential.
- 4ft
- Zone 5



Hydrangea macrophylla Rock-n-Roll™

- It has eye candy appeal in spring, but it really knocked our socks off when it rebloomed in the fall. It was a strong showing. The sturdy stems hold the flowers well above the foliage and those flowers antique very well late in the growing season. It simply looked the best - perky, happy, and colorful.
- Rock-n-Roll hydrangea was found as a sport of Twist-n-Shout in Connecticut. It has the same pink, purple, and blue color hues as that plant, but Rock-n-Roll is a mophead, instead of a lace cap.
- 3'x3'
- Zone 5
- **Bred by Dr Durr**



Hydrangea macrophylla 'Golden Penny'

- The yellow leaf color lights up the bush, like a warm lamp in a room.
- Like Penny Mac, Golden Penny Mac is a remontant, mophead hydrangea. It was found in Georgia as a branch sport on Penny Mac. So, Golden Penny is basically a Penny Mac Hydrangea, but with glowing yellow leaf color all season long. The flowers are the same big, pastel-colored mopheads.
- 3'x3'
- Zone 5





Hydrangea macrophylla **Wee Bit Grumpy®**

- it was selected for its combination of pure, intense, saturated flower color and outstanding landscape performance. And its color is really something you must see to believe in acidic soils, its big, full blooms take on a moody, dramatic deep purple-blue. They appear amid a neat, tidy mound of compact foliage that resists disease and stands up better to cold weather than conventional hydrangeas.
- Garden Height: 24-30"
- Sun
- Blooms On: New Wood
- Hardiness Zones: 5a-9b



Hydrangea paniculata Fire Light Tidbit™

- Fire Light Tidbit is a dwarf hydrangea similar to BOBO® for the front of the border with a bun shaped habit and proportionately sized, rounded blooms. The late season blooms emerge a creamy, light green-white and quickly begin to turn raspberry pink, creating a pleasing blend of colors not seen before.
- Size: 30-36"
- Sun
- USDA Hardiness Zone: 4
- Moisture: Moist, but well-drained



Hydrangea paniculate Limelight Prime™

- The next generation of 'Limelight' is here! Introducing Limelight Prime™ hydrangea.
- Blooms much earlier, creating a longer display. This is especially valuable in colder climates, where 'Limelight' might not bloom until late August.
- As the green blooms age, they develop pink and red tones that are far more vivid and showy than conventional panicle hydrangeas.
- The late season blooms emerge a creamy, light green-white and quickly begin to turn raspberry pink, creating a pleasing blend of colors not seen before.
- Size: 4-5'
- Sun
- USDA Hardiness Zone: 3
- Moisture: Moist, but well-drained



Hydrangea paniculata Quick Fire Fab™

- Quick Fire Fab™ panicle hydrangea shares the same super-early bloom time, rock-solid reliability, and easy-going nature of the original Quick Fire hydrangea, but adds big, full, showy mophead blooms to the mix. How fabulous is that? It's the best way to get the earliest possible panicle hydrangea flowers, expanding the seasonal display by two weeks or more every year.
- 6-8ft
- Sun
- Zone 3



Hydrangea q. 'Snowcicle'

- A new selection of Oakleaf hydrangea, 'Snowcicle' has 12-14" sturdy panicles of flowers that age from creamy, pure white to a soft rose red and even into green and cream. Each bloom is held aloft by a sturdy stem. The shrub grows 4-6 feet tall and even shows off in the fall with amazing autumn color in deep wine and burnt orange foliage. Compared to other double flowered selections, 'Snowcicle' has larger panicles, improved, vigor, and sturdier branches.
- Size: 4-6ft
- Part shade-shade
- USDA Hardiness Zone: 5
- Moisture: Moist, but well-drained





Hydrangea serrata Let's Dance Cancan™

- It has the unique ability to create flower buds along the entire length of the stem instead of only at the top like other big-leaf hydrangeas. That means that even if winter does its worst and kills back a portion of the plant, there will still be flower buds to open in early summer. They are lace-caps, but the size and quantity of the showy sterile florets obscures the tiny fertile florets. Flowers are a luscious strawberry pink in neutral/alkaline soils and a lovely lavender in acidic ones.

- Garden Height: 36 Inches
- Part Sun to Sun
- Blooms On: New Wood
- Hardy in zones 5a-9b





Reblooming German Iris

These fabulous Bearded Irises bloom and rebloom! Quite hardy, they are resistant to drought, disease, and insects.

- Hardiness Zones
- 4-9
- Mature Height
- 24 - 36 inches
- Bloom Time
- Midseason flowering. Reblooms late summer/fall. (Mid spring, re-blooms late summer to early fall)
- Light Requirements
- Full Sun, Half Sun / Half Shade

Iris versicolor 'Purple Flame'

- 'Purple Flame' has a richer, more intense cast to stems and flowers, yes. However, the true beauty lies in the irresistible foliage. Emerging in March, the purple flame-like foliage provides an unparalleled performance of vivid and intense eggplant purple foliage followed by an encore of rich and abundant flowers.
- 2-3ft
- Zone 2



Leucothoe axillaris 'ReJoyce'

- Year-round interest. Beginning in spring, new leaves erupt in a blaze of red over tidy green mounds. White, urn-shaped flowers form in short clusters on gently arching, yet dense branches, adding a graceful elegance to any setting, whether it be container plantings or your favorite garden path.
- As summer begins to fade, ReJoyce ignites again with the entire plant bursting into autumn colors of deep wine red- persisting through winter.
- 2-3 ft
- Part Sun
- Zone 6



Monarda SUGAR BUZZ® Series

- The members of the SUGAR BUZZ® Series from the Walters Gardens hybridizing program are perfectly suited to the middle of the flower border at 16-24" tall. All members in this series are similar in size, bloom time, and vigor, making it easy for growers to offer the entire series. In midsummer, they form a solid dome of color with their 2-2½" flowers on strong, well-branched stems.
- Bubble Gum Blast, Cherry Pops, Grape Gumball, Rockin Raspberry
- Part sun
- Zone 4



Penstemon DAKOTA™ Burgundy

- Glossy, purple black leaves on a very hardy perennial. Lovely lavender to violet flowers in June, which are loved by hummingbirds. Shorter and more compact than 'Dark Towers' or 'Mystica'. Tough and long lived. Showy dark seed heads in fall make great cut "flowers".
- USDA Hardiness Zone(s): 3-8
- Size (HT/W/FL HT): 12" / 18" / 24"
- Exposure: Full Sun



Pulmonaria 'Twinkle Toes' PP30258

- This beautiful shade perennial will make you dance with its impressive spring flowers and unique foliage. Starting in mid-spring shortly after Hellebores are finished booming, dainty light periwinkle blue flowers cover a low, mounded habit. After the flowers fade, you can enjoy its dark green leaves that are lightly sprinkled with silver.
- Part shade
- 12-15"
- Zone 3



Lavandula x intermedia Sensational!

- Lavender Sensational! is the next generation of Lavender Phenomenal with incredibly large and thick flowers and sturdy stems
- Broad SILVER foliage is thick, tough, and cupped
- Dense habit with incredible branching stems
- Extremely good heat and humidity tolerance along with cold tolerance
- Sweet lavender floral aroma
- Height 24"
- Zone 5 hardy





Rose Color Splash **Korbayum**

- New this year, this is an introduction in the Hand Picked for You- First Look line up. Working with breeders to introduce new roses that perform. Rich hues of red really stand out on this new plant. Clean foliage in our trials in Avon made this a choice to offer and give you the chance to see them.

- Sun
- 30-36"
- Zone 5-9

Plants
that **Work**[®]



New!



Meet
Petite!™

The first *ever* miniature
Knock Out® Rose

Petite Knock Out® Rose 'Meibenbino' PP 30,811

- The Petite Knock Out® Rose is the first **ever** miniature Knock Out® Rose! It has the same flower power and easy care as others in the family, but in an adorable, petite size! Plant in decorative containers for your porch or patio, or in mass for a dramatic pop of color!
- **Flower color:** Fire engine, non-fading red
- **Flowering:** Abundant and continuous.
- **Mature size:** Mature plants are 18" tall.
- **Zone:** 5-10

Miracle on the Hudson™

Coral & Pink

- The series offering Miracle on the Hudson™ Rose series, gives you all the beauty of roses without the fuss. That means you won't have to prune, trim or deadhead to get perfect 4-inch blossoms.

- New colors now available!

- Size 2-3 ft

- Sun

- **Plants that Work**®





Rose x Ringo All-Star™

The flowers start out a rich melon-orange with a cherry-red center. As each one ages, it transforms to lavender and pink, creating a look of multiple colors on one plant. A crown of fluffy yellow anthers bedecks the center and attracts pollinators. As with all Proven Winners roses, Ringo All-Star is disease resistant and low maintenance.

- Size 24-30"
- Sun
- Blooms On: New Wood
- Hardiness Zones: 4a -8b





Rose Simply Color™ (CP179521)

- Sunny yellow flowers and an abundance of buds all season long. This one also has shown great disease resistance in our trials in the Avon, Ohio. We think that you will enjoy this new rose!
- Size 24-30"
- Sun
- Blooms On: New Wood
- Hardiness Zones: 4a -8b

Plants
that **Work**®

Rose Sunset Horizon™ 'Meisistoma' PPAF

- Sunset Horizon™ is an attractive Floribunda Rose with flower color that starts bright yellow and fades to deep pink/cherry red. Flower size is quite large when fully open. It has excellent disease resistance.
- Sun
- 3-4ft
- Zone 5





Breeding Program started in 2012 with 30,000 crosses per year and 2000 combinations. 300,000 seeds have been generated annually. This makes Altman Plants one of the world's largest rose breeders of garden roses.

- **True Bloom™**
 - True rose blooms
 - Low maintenance
 - Easy to grow
 - Disease resistant
 - Compact habit
 - Repeat flowering
 - Mass of blooms



TRUE FRIENDSHIP ppaf (AKA Goldmine)

- Rose Hills Best Floribunda Award Winner 2016
- Class: Floribunda, Shrub
- Habit: 3' X 3', Compact
- Flower Size: 8 CM
- Petal Count: 35-40, Double
- Color: Yellow
- Foliage: Glossy Green
- Fragrance: Sweet, Medium





TRUE INSPIRATION

Hybrid Tea Shrub™ with
double peony type blooms.
Class: Hybrid Tea Shrub™
Habit: 5' X 4', Upright
Flower Size: 10 CM
Petal Count: 45-50, Double
Color: Pink Blend
Foliage: Medium Green
Fragrance: Peppery, Medium



TRUE PASSION

(PPAF) (AKA Double 10)

Pauline Merrell Award 'Best Hybrid Tea ', 2016.

Biltmore 'Best Hybrid Tea' Award Winner, 2016.

Heat Tolerant

Class: Hybrid Tea Shrub™

Habit: 5' X 3', Upright

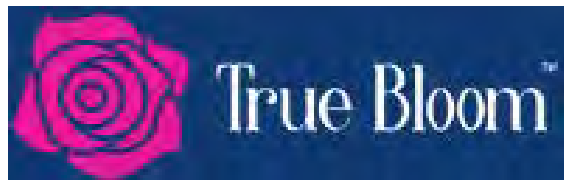
Flower Size: 9 CM

Petal Count: Double 25-30

Color: Orange Red

Foliage: Green

Fragrance: Medium, Peppery



TRUE SINCERITY

Shrub type floribunda with red, yellow and pink multicolor blooms.

Class: Floribunda Shrub

Habit: 3' X 3', Compact

Flower Size: 8 CM

Petal Count: 20-25

Color: Multi, Red, Yellow, Pink

Foliage: Glossy Dark Green

Fragrance: Mild





Rubus occidentalis 'Jewel' Jewel Black Raspberry

- Jewel Black Raspberry is a small shrub that is commonly grown for its edible qualities. It produces large clusters of black heart-shaped berries which are usually ready for picking from late spring to early summer. The berries have a sweet taste and a juicy texture.
- 4ft
- Sun
- Zone 4

Plants
that Work®

Rubus 'Natchez' PP20,891 Blackberry

- Blackberry 'Natchez' produces an impressive large fruit. This University of Arkansas hybrid is well known for early ripening date, consistent yields, and high fruit quality. 'Natchez' shows resistance to the fungal disease double blossom/rosette which hurt production in the South.
- 4ft
- Sun
- Zone 4

Plants
that Work®



Rudbeckia triloba 'Prairie Glow'

- Rudbeckia triloba 'Prairie Glow' has our attention! With brightly colored flowers of yellow with a bright red eye fading to a glowing orange to bronze, this native beauty brings fire to the sunny border. It's multi-branching habit provides dense flower cover, more so than the straight species, and it's late blooming time, starting in July and flowering right through to October, makes this a valuable pollinator plant.
- Size: 24"ft
- Sun
- USDA Hardiness Zone: 4
- Moisture: Moist, but well-drained



Rudbeckia 'American Gold Rush' PP28498 CPBRAAF

- **2020 All America Selections Perennial Award Winner**
- Finally, a Black Eyed Susan that's resistant to the Septoria leaf spot! Thanks to the thinner and hairier leaves, this hybrid Rudbeckia shows no signs of the fungus even in wet, humid conditions.
- A dome-like habit of golden yellow flowers with black centers are produced heavily from July to September.
- Sun
- 20-24"
- Zone 4



Plants that Work®

Salvia nemorosa 'Bumbleberry'
PP31602
Bumble Series

- 'Bumbleberry' produces dark fuchsia pink flowers on dark wine purple calyxes on a petite habit of attractive deep green foliage. The deep, intense color makes other pink Salvias pale in comparison.
- 10-12"
- Sun
- Zone 3



Salvia nemorosa Rose Marvel

- The largest flowers of any rose or pink Salvia nemorosa on the market. Enjoy the stunning display of color in Spring and Summer.
- Sun
- 10-12"
- Zone 4



Sedum Mojave Jewels™ 'Ruby'

- Pollinator and low-water friendly, they deserve a home in every garden, on every porch and patio and in every border.
- Ruby has the darkest purple foliage, it often reminds us of the deep, dark color of Batman's cape – it's nearly black and matte black, so it's even on trend as far as designer colors go. With blood-red flowers and nearly black foliage, this is a stunner for all to see.
- Full sun
- Size: 12-15" tall by 18-20" wide
- Zone: 3-9



SUNSPARKLER® 'Angelinas Teacup' Sedum

- The very fine, needle like foliage holds it bright chartreuse yellow green color all summer long. In the cooler weather this plant puts on a spectacular show of bright orange and reds. Unlike 'Angelina', SUNSPARKLER® Angelina's Teacup has been bred to not produce flower heads so the showy mound stays neat and tidy looking.
- Sun
- 6" ht
- Zone 4





Sedum 'Boogie Woogie' PP31767
ROCK 'N LOW™ Collection

- This sport of 'Little Miss Sunshine' has cream margins that make the plant look bright and yellow all over and are sprinkled with yellow flowers during early to midsummer. A fantastic variegated option for a groundcover in the landscape. Perfect for rock gardens!
- Sun
- 6-8"
- Zone 3





Sedum 'Bundle of Joy' PP30808 ROCK 'N ROUND™ Collection

- If you love 'Pure Joy' for its fantastic can't-be-beat habit and short stature, you'll love 'Bundle of Joy'. This is a white flowering sport of 'Pure Joy' has the same exemplary performance, as well as an explosion of blooms that cover the dome-like habit.
- 10-12"
- Sun
- Zone 3



Spigelia marilandica 'Ragin Cajun' Ragin Cajun Indian Pink

- Spigelia marilandica 'Ragin Cajun' is a selection we made in 2000 while botanizing near St. Francisville, Louisiana. In the garden, it makes a 20" tall, compact clump topped, starting in mid-May, with flower clusters that are much more orange-red compared to the blood red of the other forms in the trade. Also, Spigelia 'Ragin Cajun' produces nearly 1/3 more flower heads than other forms we've grown, resulting in a fuller clump...truly spectacular!
- Zones: 5a to 9b
- Height: 20" tall
- Culture: Sun to Light Shade

Plants
that Work®





*Spiraea japonica Rainbow Fizz™
'Matgold', USPP#28876*

- Foliage emerges copper, changes to yellow with red tips in spring, and then finishes with copper-red in fall. The fun doesn't stop there; the candy-like flower buds start red and finish with a whimsical pink bloom. Rainbow Fizz is compact and easy to grow.
- Sun
- 3-4'
- Zone 3



Stokesia laevis 'Honeysong Purple'

- 'Honeysong Purple' sports true royal purple flowers with a hint of red towards the center that darkens as it ages. The contrasting white stamens and purple-tinged stems add to its appeal. The individual flowers measure 4" across and have petals with deeply serrated edges. They are wonderful in fresh bouquets. The deep green foliage is neatly mounding.
- Sun
- 14"
- Zone 5





Syringa x hyacinthiflora **Scentara Pura®**

Classic lilac fragrance with vigorous, modern-day disease resistance!

Scentara Pura® is a hyacinthiflora lilac, the most fragrant type on the market. It earns its name from its pure purple flowers and deep, true fragrance. Fresh green foliage resists disease and keeps the plant looking good even when it's not in bloom.

- Size 4-6ft
- Sun
- Hardiness Zones: 2 -8b



Thuja x plicata 'Junior Giant' Junior Giant Arborvitae: PPAF

- The same deep, green foliage as the beloved 'Green Giant' but Junior is just that, a smaller version - great for the privacy screen that will max out at 20' tall. The perfect plant for smaller spaces. Perfect for planting in groups to form a hedge, screen or barrier that will require less trimming to keep it in at an easy to maintain height. Easy to grow, very hardy, low maintenance. Tolerates light shade. Deer resistant.
- 15-20'
- Zone 5



Viburnum carlesii Spice Island™

- Delightfully fragrant, pink buds open to white snowball-like clusters. And unlike many viburnum carlesii, this variety blooms with its leaves fully expanded as a backdrop, enhancing the beauty of the flowers.
- Spice Island's™ leaves turn to brilliant shades of burgundy and glowing red in fall
- A compact grower, Spice Island™ is slow to mature, perfect for garden paths, smaller spaces and as a specimen plant.
- Full sun (6 hours) to partial shade
- Size: 4-5' tall by 4-5' wide
- Zone: 5-9



Viburnum carlesii Sugar n' Spice™

- In mid-spring the plant is dotted with lovely pink buds that open to clusters of white, spicy-sweet flowers. Smaller than average, these flowers are much more abundant throughout the body of the plant. An in-your-face variety, at nose level, this viburnum will fill your senses with tantalizing fragrance. Plant along a path or close to your outdoor living area. Extending the season, late fall brings an unforgettable display of maroon and red autumn foliage.
- Sun
- 4-6ft
- Zone 5

