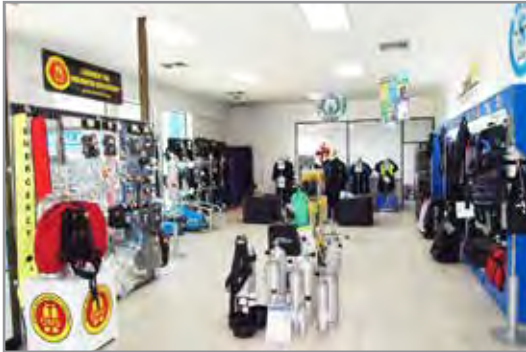
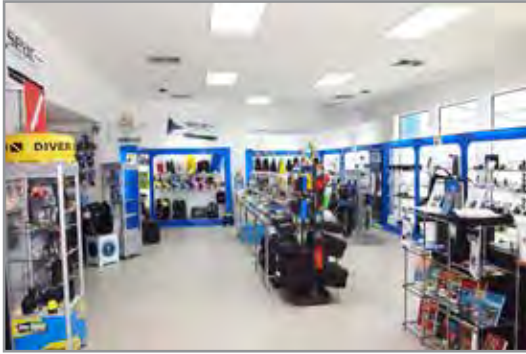


DIVE SUPPLY

CATALOGUE 2013-14



www.divesupply.com



DIVE SUPPLY HISTORY

Diving & Snorkeling Equipment Wholesale Specialist

Dive Supply is the leading distributors and wholesalers of major brand names in South East Asia and is the exclusive distributor for Scubapro, Suunto, Seac Sub, Pelican, Saekodive, Bauer, Luxfer, OMS, Snap Sights and Deep Blue Products.

We operate from our 1,500 sqm custom built warehouse in Chalong, Phuket, where we have a fully equipped service center.

If you are looking for the leading brands in Diving and Snorkeling Equipment along with value for money and excellent customer service then Dive Supply is the place to come.

We have a product portfolio which is second to none and we are the main distributor for PADI materials throughout Thailand.



PHUKET DIVE SUPPLY MAIN OFFICE

Dive Supply Co., Ltd.
www.divesupply.com
sales@divesupply.com
 Tel: 076 383 414-6
 Fax: 076 281 525

KOH TAO DIVE SUPPLY
info@kohtaodivesupply.com
 Tel: 077 456 162
 Fax: 077 456 163

BANGKOK DIVE SUPPLY
contact@divesupplybkk.com
 Tel: 02 354 4815
 Fax: 02 354 4819

KOH SAMUI DIVE SUPPLY
info@samuidivesupply.com
 Tel: 077 230 063
 Fax: 077 230 186

KOH CHANG DIVE SUPPLY
kohchangdivesupply@gmail.com
 Tel: 039 551 518
 Fax: 039 551 519



PADI



SCUBAPRO

SUUNTO



SUBGEAR



SEAC

INTOVA

Enhancing the Recreational Experience



TABLE OF CONTENTS

REGULATORS	4-12
BCD'S / SPECIAL PACKAGES	13-22
INSTRUMENTS	23-27
COMPUTERS	28-33
MASKS & SNORKELS	34-47
GOGGLES & MASK SETS	48-50
FINS	51-56
NEOPRENE PRODUCTS	57-66
CAMERAS	67-70
BAGS & CASES	71-78
TORCHES	79-81
KNIVES	82-83
REBREATHER	84-86
TECH - DIVING	87-92
COMPRESSORS	93-96
TANKS & VALVES	97-98
TOOLS & PARTS	99-102
ACCESSORIES	103-119
MARINE BOOKS	120



HIGH TECHNOLOGY AND MAXIMUM BREATHING COMFORT WITH SCUBAPRO REGULATORS

SCUBAPRO FIRST STAGE REGULATORS

First stage regulators are divided into piston and diaphragm categories.

SCUBAPRO PISTON TECHNOLOGY

The general advantage of a piston first stage lies in its reliability and reduced maintenance requirements. More importantly, no other design can reach the high air delivery rate of a balanced piston controlled first stage.

First stages with air-balanced pistons deliver significantly more air to the second stage than any other first stage. This technology is featured in our MK25 first stages.

Classic downstream piston -. The classic downstream valve is the first choice of diving centers and rental facilities worldwide for warm and moderate water temperatures. This technology is featured in our MK2 PLUS first stage.

FIRST STAGE PRODUCT FEATURES				
	MK25	MK17	MK11	MK2+
Technology				
Air balanced flow-through piston	•			
Classic downstream piston				•
Balanced diaphragm		•	•	
Chrome plated brass body	•	•	•	•
Externally adjustable Intermediate pressure	•	•	•	
Cold Water				
Anti-freeze protection	•	•		
Dry chamber		•		
Ports				
Intermediate pressure (IP) and High Flow (HF)	4 + 1HF	2+2HF	2+2HF	4
IP Ports on swivel turret	5	-	-	-
High Pressure (HP)	2	2	2	1
Tank Connection				
INT 230 bar (3336 psi)	•	•	•	
DIN 300 bar (4351 psi)	•	•	•	
Weight				
DIN 300	592g /	625g /	470g /	485g /
	20.9oz	22oz	16.6oz	17.1oz
INT	825g /	850g /	692g /	706g /
	29.1oz	30oz	24.4oz	14.9oz
EN144-3	-	-	-	-
Air flow at 200 bar	>8500 l/min	>8500 l/min	>8500 l/min	>8500 l/min
	301 SCFM	301 SCFM	301 SCFM	301 SCFM
Intermediate pressure	9-9.8bar	9-9.8bar	9-9.8bar	8.5-9.8bar
	130-142 psi	130-142 psi	130-142 psi	123-142psi

SCUBAPRO DIAPHRAGM TECHNOLOGY

Diaphragm-based first stages are environmentally sealed so water cannot enter the inner mechanism. Diaphragm first stages have been the favored choice of cold water divers and those working in contaminated or muddy water. This technology is featured in our MK17 and MK11 first stages.

SCUBAPRO SECOND STAGE REGULATORS

A high quality second stage can significantly reduce stress and enhance diver safety by providing smooth, low-effort breathing response, resulting in ample yet controllable quantities of air.

AIR-BALANCED VALVE TECHNOLOGY

The air-balanced valve technology of SCUBAPRO second stages features a balancing chamber in the second stage mechanism, slightly offsetting the force of the downstream air entering from the first stage. Air-balanced valve technology is featured in X-Series, S-Series and G-Series second stages. For best results, they should be teamed with balanced first stages like the MK25 or MK17.

SECOND STAGE PRODUCT FEATURES							
	A700	S600	G260	C300	R195	R095	AIR2
Technology							
Air balanced valve	•	•	•				
OFD* downstream valve				•			
Classic downstream valve					•	•	•
Technopolimer valve housing				•			•
Full metal valve housing	•	•	•				
Full metal case	•						
Technopolimer case		•	•	•	•	•	
Breathing comfort							
Coaxial Flow	•						
Diver-adj. inhalation effort	•	•	•	•			
Diver-adjustable VIVA	•	•	•	•			
Pre-set VIVA					•	•	•
Features							
Superflow hose	•	•	•	•	•	•	•
Supercomfort mouthpiece	•	•	•	•	•	•	
Nitrox compatible up to 100% Oxygen							
Left/Right hose attachment			•		•	•	
Tech data							
Weight	265g	193g	275g	175g	198g	165g	190g
	9.3oz	6.8oz	9.7oz	6.2oz	7.0oz	5.5oz	6.7oz
Air flow at 200 bar (l/min)	>2000	1850	1850	1550	1400	1400	906
	71 SCFM	66 SCFM	57 SCFM	55 SCFM	50 SCFM	50 SCFM	-
Maximum low pressure pressure	14 bar	14 bar	14 bar	14 bar	14 bar	14 bar	11 bar
	203 psi	203 psi	203 psi	203 psi	203 psi	203 psi	203 psi

* OFD = Optimal Flow Design



MK25 / S600

First stage

- ▶ Balanced High Performance First Stage
- ▶ Air-Balanced Flow-Through Piston Design
- ▶ 5 Port LP Swivel and Dual HP Ports
- ▶ Adjustable IP Pressure

Second stage

- ▶ Technopolymer Body and Components
- ▶ Peak Performance Air-Balancing System
- ▶ Air-Balanced Linear-Flow Valve
- ▶ Diver Adjustable VIVA and Inhalation Effort Control
- ▶ New Mouth Piece

Part No.	Detail	THB
X10.713.000	MK25 First Stage	25,980
X11.603.000	S600 Second Stage	



MK25T / S600T

First stage

- ▶ Titanium construction
- ▶ Balanced High Performance First Stage
- ▶ Air-Balanced Flow-Through Piston Design
- ▶ 5 Port LP Swivel and Dual HP Ports
- ▶ Adjustable IP Pressure

Second stage

- ▶ Technopolymer Body and Components
- ▶ Titanium internal Barrel
- ▶ Peak Performance Air-Balancing System
- ▶ Air-Balanced Linear-Flow Valve
- ▶ Diver Adjustable VIVA and Inhalation Effort Control

Part No.	Detail	THB
X12.780.040	MK25T / S600T	69,290



MK25 / S600 BLACK TECH

First stage

- ▶ PVD black finish
- ▶ Balanced High Performance First Stage
- ▶ Air-Balanced Flow-Through Piston Design
- ▶ 5 Port LP Swivel and Dual HP Ports
- ▶ Adjustable IP Pressure

Second stage

- ▶ Technopolymer Body and Components
- ▶ PVD black styling
- ▶ Peak Performance Air-Balancing System
- ▶ Air-Balanced Linear-Flow Valve
- ▶ Diver Adjustable VIVA and Inhalation Effort Control
- ▶ New Mouth Piece

Part No.	Detail	THB
X12.971.080	MK25 / S600 Black Tech	33,145



MK2 / R095

First stage

- ▶ Standard Piston Design
- ▶ Thermal Insulating System (T.I.S.)
- ▶ 4 LP Ports & 1 HP Port

Second stage

- ▶ Classic Downstream Valve
- ▶ Dealer-Adjustable VIVA
- ▶ Reversible LP Hose Attachment

Part No.	Detail	THB
X12.095.100	MK2 / R095	10,570

MK25 FIRST STAGE INT/DIN

- ▶ Top performer
- ▶ Balanced piston design
- ▶ NEW thermal insulation system 2
- ▶ 5 high flow low pressure 360° swivel ports
- ▶ Dual high pressure ports
- ▶ Available in yoke or DIN

Part No.	Detail	THB
X10.713.000	MK25 First Stage	12,030
X10.713.300	MK25 DIN 300 bar	12,645



MK17 FIRST STAGE INT/DIN

- ▶ Balanced diaphragm design
- ▶ Dry ambient chamber
- ▶ Thermal Insulating system (TIS)
- ▶ Anti freeze system (AF)
- ▶ 4 low pressure ports (2 HFP)
- ▶ 2 high pressure ports

Part No.	Detail	THB
X10.714.000	MK17 First Stage	10,110
X10.714.300	MK17 DIN 300 bar	10,650



MK11 FIRST STAGE

- ▶ Balanced diaphragm design
- ▶ 4 low pressure ports - 2 high flow ports
- ▶ 2 high pressure ports
- ▶ Very compact design

Part No.	Detail	THB
X10.708.000	MK11 First Stage	8,190
X10.708.300	MK11 DIN 300 bar	8,960



MK2 PLUS FIRST STAGE INT/DIN

- ▶ The workhorse "Simple reliability"
- ▶ Standard piston technology
- ▶ TIS thermal insulation system
- ▶ 4 low pressure ports
- ▶ Single high pressure port
- ▶ Available in yoke or DIN system

Part No.	Detail	THB
X10.060.010	MK2 Plus First Stage	5,505
X10.060.030	MK2 Plus DIN	5,815



ALL SCUBAPRO REGULATOR SYSTEMS ARE NITROX COMPATIBLE, APART FROM THE MK25 & MK11 TITANIUM UP TO A MAXIMUM OF 40% OXYGEN AT 230 BAR TANK PRESSURE



A700 SECOND STAGE

- ▶ Precision handcrafted construction & design masterpiece
- ▶ Polished chrome exterior for a lifetime of quality & timeless styling
- ▶ Exceptional breathing performance at any depth
- ▶ The work of breathing has been lowered to a value of 0.5 J/l
- ▶ New aligned VIVA system with co-axial 2-piece dive switch
- ▶ Full metal body & metal components assure maximum performance
- ▶ Metal provides the best thermal exchange imaginable in cold water

Part No.	Detail	THB
X11.700.000	A700	17,020



S600 SECOND STAGE

- ▶ Air balanced valve
- ▶ Diver-adjustable inhalation effort
- ▶ Diver-adjustable Venturi-Initiated Vacuum Assist (VIVA)
- ▶ Super-flow hose
- ▶ High comfort orthodontic mouthpiece
- ▶ Full metal valve housing

Part No.	Detail	THB
X11.603.000	S600	13,950



G260 SECOND STAGE

- ▶ Air balanced valve
- ▶ Diver-adjustable inhalation effort
- ▶ Diver-adjustable Venturi-Initiated Vacuum Assist (VIVA)
- ▶ Super-flow hose
- ▶ High comfort orthodontic mouthpiece
- ▶ Full metal valve housing

Part No.	Detail	THB
X11.263.000	G260	12,415

C300 SECOND STAGE

- ▶ The optimal flow design valve (OFD) for reliable & high air flow, improving work of breathing compared to a downstream valve
- ▶ Diver-adjustable coaxial VIVA for powerful inhalation assistance & prevention of free-flow
- ▶ Diver adjustable inhalation control for personalized breathing effort
- ▶ Redesigned mouthpiece tube allows better exhaust airflow

Part No.	Detail	THB
X11.361.000	C300	6,400



R095 SECOND STAGE

- ▶ Classic downstream valve
- ▶ VIVA Preset
- ▶ Super-flow hose
- ▶ High comfort orthodontic mouthpiece
- ▶ Full metal valve housing
- ▶ Left/right hose attachment

Part No.	Detail	THB
X11.330.500	R095	5,120



R195 SECOND STAGE

- ▶ Classic downstream valve
- ▶ Diver-adjustable Venturi-Initiated Vacuum Assist (VIVA)
- ▶ Super-flow hose
- ▶ Super Comfort High Flow mouthpiece
- ▶ Metal valve housing

Part No.	Detail	THB
X11.331.000	R195	7,040





AIR 2 ALTERNATE AIR SOURCE (4TH GENERATION)

- ▶ Restyled 4th generation of 1979 concept
- ▶ Air balanced power inflator valve
- ▶ Can be pre-assembled on any Scubapro BCD

Part No.	Detail	THB
X21.089.000	Air 2	6,985



R095 OCTOPUS

- ▶ Classic downstream valve
- ▶ VIVA Preset
- ▶ Super-flow hose
- ▶ High comfort orthodontic mouthpiece
- ▶ Full metal valve housing
- ▶ Left/right hose attachment

Part No.	Detail	THB
X11.330.200	R095 Octopus	5,500



R195 OCTOPUS

- ▶ Classic downstream valve
- ▶ VIVA Preset
- ▶ Super-flow hose
- ▶ High comfort orthodontic mouthpiece
- ▶ Full metal valve housing
- ▶ Left/right hose attachment

Part No.	Detail	THB
X11.331.200	R195 Octopus	7,425



SG1000 SET

The SG1000 is our top choice for the discerning diver. High performance balanced diaphragm 1st stage with dry chamber for all temperatures, including cold or murky water. Unbeatable balanced second stage with diver adjustable Venturi and inhalation for easy to operate effortless air flow.

Part No.	Detail	THB
G812.917.010	SG1000 Reg. Set 1st &2nd Stage	16,800



SG500 SET

High performance balanced diaphragm 1st stage for all temperatures, including cold or murky water. Classic downstream valve second stage with diver adjustable venturi and left/right hose attachment for reliable, recreational diving.

Part No.	Detail	THB
G812.398.000	SG500 Reg. Set 1st &2nd Stage	11,120



SG100 SET

Classic downstream valve second stage with left/right hose attachment makes SG100 a great recreational, worry free regulator.

Part No.	Detail	THB
G812.922.000	SG100 Reg. Set 1st & 2nd Stage	9,235



SG100 OCTOPUS

Pre-set Venturi flow vane for smooth supply of air at any depth in the 2nd stage. Supplied with Yellow hose.

Part No.	Detail	THB
G811.294.010	SG100 Octopus	4,585





X-5P REGULATOR SET

The reliability, safety, and simplicity of the piston first-stage are further enhanced by the new SEAC second stage with its extraordinary performance, sturdiness, and light weight.

- ▶ First stage materials: shiny chrome-plated brass
- ▶ Second stage materials: ultralight technopolymers
- ▶ HP outlets: 1
- ▶ LP outlets: 4
- ▶ Original MyFlex hose included (70 cm)

Part No.	Detail	THB
B7002-2I	X-5P	6,765



X-5 OCTOPUS

The X-5 Octo Synchro: Seac proposes solutions for a reliable and long-lasting emergency second stage that allows natural effortless breathing. Even if the specs differ, the common denominator is always maximum functionality.

- ▶ Second stage materials: ultralight technopolymers
- ▶ Original MyFlex yellow hose included (100 cm)

Part No.	Detail	THB
B7001-O	X-5 Octopus	3,205



XSTREAM DEEP REGULATOR

The regulator of choice for demanding divers.

- ▶ Trimix and air
- ▶ 5 LP and 2 HP-ports
- ▶ Certified to 200 m
- ▶ Delivered with a 70 cm hose



Part No.	Detail	THB
E0100-000	Xstream Deep MK3 Black 1st + 2nd stage package	27,859



SCHOOL & RENTAL SET

High quality Scubapro BCD + Regulator for rental use...



Scubapro Complete Set:

- ▶ BCD T-One (3rd Generation)
- ▶ 1st Stage MK2 Plus
- ▶ 2nd Stage R295
- ▶ Octopus R095
- ▶ Console 2



Simple, Reliable, Comfortable

- ▶ 1000 denier cordura exterior
- ▶ 420 denier nylon interior
- ▶ Advanced cummerbund adjustment system w/ extended velcro for extra waist size
- ▶ 3 welded valves perfect for the rental market
- ▶ Balanced Power Inflator (BPI)
- ▶ Comfortable soft anti slip backpack
- ▶ Easy carry handle on backpack
- ▶ 2 velcro flap pockets
- ▶ Standard tank band system for teaching
- ▶ 7 Colour coded sizes

BCD & Regulator Set Complete

Item Code: XRS2

Retail = 31,990.-

T-One Size	XXS	XS	S	M	L	XL	XXL
Colour Coded	Pu	Pi	G	B	Li	O	Gp
Lift Capacity in Kg.	9	11	14	17	18	21	22

Each complete Scubapro standard set includes a service kit for 1 x 1st stage, 1 x 2nd stage, also your first annual service (Labour only) **FREE OF CHARGE**



CLASSIC BCD

- ▶ New look and RF welding technology
- ▶ lighter in weight
- ▶ Air-balanced construction
- ▶ Neoprene double-coated 420 Denier fabric
- ▶ Hand-glued finseal seam
- ▶ Soft neoprene neck roll
- ▶ Zippered chest and side mesh pockets
- ▶ New and improved dump valves, for better control

Part No.	Detail	THB
X22.108	Classic	28,805

Available Sizes	XS	S	M	L	XL
Lift Capacity in Kg.	12	16	20	26	30



X-FORCE BCD

- ▶ Bladder fabric from Cordura 500 to 1000
- ▶ Fabric consistency all over the BC line
- ▶ Outlined logo on right pocket
- ▶ New weight pockets with a plastic backing, making them more rigid when filled and thus easier to insert and pull out. This new design uses a standard buckle for a sure hold and fast access in case of emergency release.
- ▶ Dump valves have been redesigned to increase the air passage crosssection by 15% for better reaction.
- ▶ Added a stronger thread and the dump system is lower profile, for less bulk
- ▶ The lanyard knob is now easier to grasp and pull thanks to its new shape.

Part No.	Detail	THB
X21717	X-Force	32,290

Available Sizes	XS	S	M	L	XL	XXL
Lift Capacity in Kg.	11	14	17	18	21	23



GLIDE PRO BCD

- ▶ Wrap-around air cell
- ▶ Soft neoprene neck trim & plush backpad
- ▶ Zippered cargo pockets
- ▶ Durable 420-denier nylon air cell construction
- ▶ 4 pre-bent stainless steel D-rings
- ▶ Quick-release integrated weight system
- ▶ Knife attachment grommets
- ▶ Rotating quick release shoulder buckles & adjustable shoulder straps

Part No.	Detail	THB
X22.279	Glide Pro	22,010

Available Sizes	XS	S	M	L	XL
Lift Capacity in Kg.	10	12	13	15	17

X-BLACK BCD

- ▶ Updated Airnet™ ergonomic backpack
- ▶ Octopus pockets on both sides
- ▶ Ergonomic soft backpack
- ▶ Strong fabric on the inner side
- ▶ Soft Airnet™ spots on the cummerbund area
- ▶ Shoulder straps linked to the cummerbund
- ▶ The new X-Black features the exclusive AirFlex system, highlighted by the red bungees, that simplifies buoyancy control and guarantees
- ▶ New weight pockets with a plastic backing, making them more rigid when filled and thus easier to insert and pull out. This new design uses a standard buckle for a sure hold and fast access in case of emergency release.
- ▶ Dump valves have been redesigned to increase the air passage crosssection by 15% for better reaction.
- ▶ Added a stronger thread and the dump system is lower profile, for less bulk
- ▶ The lanyard knob is now easier to grasp and pull thanks to its new shape.

Part No.	Detail	THB
X21719	X-Black	37,810

Available Sizes	XS	S	M	L	XL	XXL
Lift Capacity in Kg.	11	14	18	20	21	23



T-ONE BCD

- ▶ Perfect jacket for beginners and rental facilities
- ▶ Hydrodynamic Cut and hi-grip padding
- ▶ Heavy duty Cordura 1000 exterior ensures robustness
- ▶ Soft and lightweight Nylon 420 interior
- ▶ Carbon reinforced shoulders and front pocket flap areas
- ▶ Cordura Color-Lock: protection against sun and water exposure
- ▶ Padded cummerbund

Part No.	Detail	THB
X21703	T-One	12,350

Available Sizes	XXS	XS	S	M	L	XL	XXL
Lift Capacity in Kg.	9	11	14	17	18	21	23





X-TEK PURE SINGLE SYSTEM

- ▶ Pure harness
- ▶ Stainless steel backplate
- ▶ Donut wing 13kg
- ▶ Single tank adaptor
- ▶ SMB back plate pouch
- ▶ Crotch strap
- ▶ Pure System also with Aluminium backplate available

Part No.	Detail	THB
X22.195.010	Pure System	33,900



X-TEK DUAL HS WING

- ▶ Double bladder horseshoe wing
- ▶ 1680 denier ballistic nylon outer shell
- ▶ Two 420 denier nylon inner bladder
- ▶ Tek inflator with stainless steel buttons
- ▶ Bungee-system for minimum drag
- ▶ Available in 27kg or 40kg lift capacity

Part No.	Detail	THB
X22.187.010	Dual HS Wing 40kg	27,530



X-TEK HORSE SHOE WING

- ▶ 1680 denier ballistic nylon outer shell
- ▶ 420 denier nylon inner bladder
- ▶ Tek inflator with stainless steel buttons
- ▶ Bungee-system for minimum drag
- ▶ Available in 27kg lift capacity with one exhaust valve

Part No.	Detail	THB
X22.194.010	HS Wing 27kg	15,265



BUOY POCKET

For Horseshoewing (HS)

Part No.	Detail	THB
X23.817.000	Buoy Pocket	1,160

X-TEK DONUT WING

- ▶ Provides unprecedented buoyancy control regardless of diving position
- ▶ 1680 denier ballistic nylon outer shell
- ▶ 420 denier nylon inner bladder
- ▶ Tek inflator with stainless steel buttons
- ▶ Available with 13, 18, or 27kg lift capacity

Part No.	Detail	THB
X22.193.010	13kg w/ BPI for Singles	14,790
X22.183.010	18kg w/ BPI for Twins	15,640



X-TEK FORM HARNESS

- ▶ Stainless steel back plate
- ▶ Tri-compound comfort-harness-system
- ▶ Anatomically optimized back padding
- ▶ Adjustable shoulder straps in length & alignment
- ▶ 50mm crotch strap with 2 stainless steel D-ring
- ▶ Optionally equipped with QR-weight system

Part No.	Detail	THB
X22.182.000	Form Harness	19,885



X-TEK PURE HARNESS

- ▶ Stainless steel back plate with "tri-glide" fasteners
- ▶ Secure continuous webbing provides custom fit
- ▶ Stainless steel waist buckle
- ▶ Back plate storage pack to fit large SMB
- ▶ 2 shoulder & 1 left D-ring on the waist belt
- ▶ 50mm crotch strap with two stainless steel D-ring

Part No.	Detail	THB
X22.179.000	Pure Harness	13,090



X-TEK PRO HARNESS

- ▶ Pro-harness-system with QR-buckle
- ▶ Padded shoulder straps with 2 stainless steel D-ring
- ▶ Back plate storage pack to fit large SMB
- ▶ Backplate not included
- ▶ Crotch strap not included

Part No.	Detail	THB
X23.805.000	Pro Harness Only	8,635
X22.180.000	Pro Harness w. SS Backplate	17,250



SHOULDER PADS

Shoulder pads for the ultimate comfort.

Part No.	Detail	THB
X23.809.000	Shoulder Pads	1,415



BACKPLATE

This back plate features optimizes stability. Ergonomic shape for maximum comfort & the elimination of backache on extended dives. Plenty of options to attach storage pack & various accessories.

Part No.	Detail	THB
X23.800.000	Backplate - S. Steel	8,065
X23.801.000	Backplate - Aluminum	7,005



BACKPLATE STORAGE PACK

Storage pack attaches to plate, for additional space to carry accessories.

Part No.	Detail	THB
X23.808.000	Backplate Pockets	3,745



SOFT TRAVEL BACKPLATE

- ▶ Replaces metal backplate
- ▶ Includes 2 x super cinch tank straps
- ▶ Only compatible with FORM harness

Part No.	Detail	THB
X23.807.000	Soft Travel Backplate	5,020



SINGLE TANK ADAPTER

Attaches assembly point to extend the stainless steel back plate for dives with single tanks. Includes two SCUBAPRO super-cinch straps for the optimum tank attachment.

Part No.	Detail	THB
X23.802.000	Single Tank Adapter	6,555



WEIGHT POCKETS

Weight pocket system with QR-buckle for divers seeking releasable weight pockets to their BC system.

Part No.	Detail	THB
X23.803.000	Weight Pocket	4,810

SCHOOL & RENTAL SET

Drift BCD

- ▶ Constructed in 420 Denier nylon for light weight durability
- ▶ Balanced inflator
- ▶ 3 dump valves
- ▶ Large cargo zip pockets
- ▶ Standard tank strap with lightweight plastic buckle
- ▶ Simple gravity release weight pockets
- ▶ Lightweight plastic D rings
- ▶ Low Pressure Inflator Hose (EN 250 - Europe Standard)
- ▶ Available in sizes: XS, S, M, L, XL

SG 100 1st Stage

- ▶ A classic downstream piston first stage for consistent breathing
- ▶ Easy maintenance

SG100 2nd Stage

- ▶ Classic downstream valve second stage with left/right hose attachment
- ▶ A great recreational and worry free regulator
- ▶ Regulator Hose 75 cm (EN 250 - Europe Standard)

SG100 2nd Stage Octopus

- ▶ Robust downstream valve second stage with left/right hose attachment
- ▶ Yellow for easy recognition and secure handling.
- ▶ Octopus Hose 100 cm Yellow (EN 250 - Europe Standard)

Console 2

- ▶ Convenient 2-gauge console with pressure and depth gauge on the front
- ▶ Pressure gauge: 0 to 6000 psi analog pressure gauge.
- ▶ Depth gauge: 0 to 200 ft. oil-filled depth gauge with maximum depth indicator
- ▶ High Pressure Hose (EN 250 - Europe Standard)
- ▶ Available in Metric and Imperial

BCD & Regulator Set Complete

Item Code: GS1

Retail = 29,800.-

SUBGEAR



Each complete rental set includes 1 free regulator service kit (1 x 1st stage, 1 x 2nd stage) 1st yearly service free of charge.



DRIFT BCD

- ▶ 3D Bladder construction
- ▶ Knife grommets x 3
- ▶ 420 Deniers nylon on bladder
- ▶ Subgear Balanced inflator
- ▶ 3 dump valves
- ▶ Cargo zip pockets
- ▶ Plastic buckle standard tank strap
- ▶ Easy release weight pockets
- ▶ Plastic D-rings

Part No.	Detail	THB
G822.118	Drift BCD	11,990



REBEL BCD FOR CHILDREN (8-12 YR)

- ▶ The only buoyancy compensator that 'grows' with the child, using adjustable shoulder buckles and an inter-changeable cummerbund
- ▶ Includes Small and Medium Cummerbund
- ▶ One size fit all

Part No.	Detail	THB
G821.222	Rebel BCD	15,325
G821.590.300	Cummerbund Rebel for Size M	1,085



SCHOOL & RENTAL SET



EGO BCD

Uncompromised durability

The decision to use Cordura 1000 in creating this jacket was based essentially on the need to maximize abrasion resistance, given the intensive use these jackets are subjected to in diving centers.

Another fantastic feature is the even wider range of sizes, XXS –XL

- ▶ Material outer bladder: PU coated 1000 D Cordura
- ▶ Material inner bladder: PU coated 840 D Nylon
- ▶ Dump valves: 3 with pull command
- ▶ D-rings: 4 - 25 mm in stainless steel
- ▶ Dry weight (size L): 3200g

X-5 P Regulator Set

Reliability and Simplicity

The reliability and simplicity of the piston first-stage are further enhanced by the new SEAC 2nd stage with its extraordinary performance, sturdiness, and light weight.

First stage materials

shiny chrome-plated brass (1 x HP port, 4 x LP ports)

Second stage materials

ultra light techno polymers (Original MyFlex hose included)

Console 2

Pressure gauge (Bar), Depth Gauge (Metric) 0-70 m w. luminescent display

BCD & Regulator Set Complete

Item Code: BSET/1

Retail = 27,300.-

Each complete rental set includes 1st yearly service free of charge & 1 free regulator service kit (1 x 1st stage, 1 x 2nd stage, 1 x Octopus)



EGO BCD

- ▶ Material outer bladder: PU coated 1000 D Cordura
- ▶ Material inner bladder: PU coated 840 D Nylon
- ▶ Dump valves: 3 with pull command
- ▶ D-rings: 4 - 25 mm in stainless steel
- ▶ Dry weight (size L): 3200 g (complete with hose and weight pocket)

Part No.	Detail	THB
B7000-5	Ego	11,450

Available Sizes	XXS	XS	S	M	L	XL
Lift Capacity in Kg.	9.7	10.2	11.2	15.3	17.3	18.3



PRO 2000 HD BCD

- ▶ Outer bladder in PU coated 1000 cordura
- ▶ Inner bladder in PU coated 420 denier cordura
- ▶ Front weight integration with quick release (up to 4kg ea.)
- ▶ Back weight integration pockets (up to 2kg ea.)
- ▶ 3 dump valves with pull command
- ▶ 3 x D-rings 50mm "curved" in stainless steel
- ▶ 2 x D-rings 50mm in stainless steel
- ▶ 2 x D-rings 25mm in stainless steel
- ▶ Chest strap adjustable in 2 positions
- ▶ Piston Inflator
- ▶ Dry weight (size L): 4100g

Part No.	Detail	THB
B18003	Pro 2000 HD	23,725

Available Sizes	S	M	L	XL
Lift Capacity in Kg.	11.2	17.3	20.4	24.4



U-LINE CONSOLE 2

- ▶ Pressure gauge 400 bar
- ▶ Depth gauge 60m with parabolic scale
- ▶ Maximum depth indicator
- ▶ Can attach C-1 compass which is sold separately

Part No.	Detail	THB
X05.022.210	U-line Console 2	

U-LINE PRESSURE GAUGE

- ▶ Pressure gauge 400 bar
- ▶ Can attach C-1 compass which is sold separately

Part No.	Detail	THB
X05.012.112	U-line Pressure Gauge	4,135

FS-2 COMPASS & RETRACTORS

FS-2 provides a unique tilt angle of at least up to 35 degrees, making it easier to read & operate in most any position. With a floating magnet separate from the compass rose, the FS-2 has a greater angle of operating freedom than conventional compasses. & this means you can use the same compass for both Northern & Southern hemispheres, so perfect for travelling divers.

Part No.	Detail	THB
X05.017.101	w/ Wrist Mount	3,615
X05.017.111	w/ Retractor Mount	3,425
X05.017.121	w/ Retractor Complete	5,230

C-1 COMPASS

- ▶ Quick-connects for easy adding to U-Line consoles or most wrist gauges
- ▶ Scratch resistant and durable oil-filled polycarbonate case
- ▶ Highly luminous dial for easy reference in low light conditions

Part No.	Detail	THB
X05.015.100	C-1 w/ Wrist Mount	1,650



X05.022.210



X05.012.112



X05.017.101



X05.017.111



X05.017.121



X05.015.100



FSS005249220



FSS016427000



FSS005240200



FSS018657000
FSS018658000



FSS018678000
FSS018677000



FSS005108200



DBCM-01



FSS004102011

CB-TWO IN LINE

- ▶ Depth gauge 70 meter
- ▶ Pressure gauge 300 bar

Part No.	Detail	THB
FSS005249220	CB-Two in line	7,250

CB-TWO IN LINE / ZOOP

- ▶ Depth gauge 70 meter
- ▶ Pressure gauge 300 bar
- ▶ Attachable modules with Zoop

Part No.	Detail	THB
FSS016427000	CB-Two in line w. Zoop Orange	14,745

CB-ONE

- ▶ SM-36 pressure gauge 300 bar
- ▶ Console housing & hose

Part No.	Detail	THB
FSS005240200	CB-One	5,215

SK-7 WRIST COMPASS

- ▶ Tilt potential of +/- 30°
- ▶ Phosphorescent compass card
- ▶ Wrist or console-mounted & Large side-reading window

Part No.	Detail	THB
FSS018657000	SK-7 NH	2,805
FSS018658000	SK-7 SH	2,805

CB-71 / STD

- ▶ SK-7 compass
- ▶ Attachment for cobra & console

Part No.	Detail	THB
FSS018678000	CB-71 / STD SH	2,805
FSS018677000	CB-71 / STD NH	2,805

PRESSURE GAUGE

Pressure gauge 300 bar with hose

Part No.	Detail	THB
FSS005108200	SM-36 300 bar	4,480

MINI COMPASS

Mini watchband compass

Part No.	Detail	THB
DBCM-01	Mini Compass	100

CLIPPER COMPASS

Clipper attachable compass

Part No.	Detail	THB
FSS004102011	Clipper Compass NH	760

XP10 INLINE

- ▶ Nitrox-compatible 21 - 50 %
- ▶ Adaptive Algorithm (ZH-L8 ADT)
- ▶ Adjustable PPO2 between 1.2 and 1.6 Bar
- ▶ Back light
- ▶ Visual and audible alarm
- ▶ 12 and 24 hours mode
- ▶ Timer for Safety Stops
- ▶ Re-Set Function
- ▶ 25 Hours of Profile Storage at 4-second Sampling
- ▶ Toggle through Essential Information during Dive Mode
- ▶ User Replaceable Battery with Sealed Battery Compartment

Part No.	Detail	THB
G805.831.110	XP10 Wrist	11,550



G805.831.110

XP-H (STANDARD HOSE)

- ▶ All great features of the XP-10 computer
- ▶ Open user-friendly battery access
- ▶ Lanyard loop positioned on front of console
- ▶ HP tank contents display in Bar or PSI
- ▶ Optional Quick Disconnect (requires Male to Male HP hose)
- ▶ Additional features for air management
 - ◆ Half tank warning
 - ◆ Reserve tank warning

Part No.	Detail	THB
G805.834.100	XP-H w. Standard Hose	14,990



G805.834.100

PRESSURE GAUGE

- ▶ Standard and mini depth gauges registers to 60 m
- ▶ Subgear mini pressure gauge rated to 400 bar
- ▶ Low Pressure 50 Bar red area for easy visibility.
- ▶ Luminous dials for visibility even in low-light or night conditions.
- ▶ Safety loop on boots for lanyard or retractors
- ▶ Maximum depth indicator for easy logging.
- ▶ Lightweight but robust rubber construction of console boots
- ▶ 90cm HP Hose
- ▶ Optional C-1 compass

Part No.	Detail	THB
G805.812.210	Console 2 U-Line	6,200



G805.812.210



COMPACT PRESSURE GAUGE

- ▶ Glass highresistance polycarbonate
- ▶ Luminescent display
- ▶ Scale bar 0-400 (units of 10 bar)

Part No.	Detail	THB
B2250	Compact Pressure Gauge	3,855



CONSOLE 2

- ▶ Depth Gauge 0-70m
- ▶ Pressure gauge 0-400 bar
- ▶ Luminescent display

Part No.	Detail	THB
B2270	Console 2	6,440



CONSOLE 3

- ▶ Pressure gauge 0-400 bar
- ▶ Depth gauge 0-70m
- ▶ Compass on back
- ▶ Luminescent display

Part No.	Detail	THB
B2272	Console 3	10,005

PRESSURE & DEPTH GAUGES CAPSULE

Scubapro:

Part No.	Detail	THB
X28.039.302	Compact Press. Gauge	2,580
X28.860.005	Compact Depth Gauge	3,720
X05.012.012	U-Line PG	2,580
X05.012.011	U-Line DG	3,035

Subgear:

Part No.	Detail	THB
G806.203.528	U-line PG	2,580
G806.203.524	U-line DG	3,035

Suunto:

Part No.	Detail	THB
FSS05108M200	SM-36/300 PG Module	2,845
FSS05040M010	SM-16/45 Depth Module	2,890
FSS05040M020	SM-16/70 Depth Module	2,890

Seac:

Part No.	Detail	THB
BS224001	Pressure Gauge Module	3,250
BS226001	Depth Gauge Module	2,980

Saekodive:

Part No.	Detail	THB
SAP-0018	Miniature SPG (Pony Gauge) CE	1,210

COMPASS CAPSULE

Part No.	Detail	THB
FSS018659000	SK-7 Capsule NH	1,655
FSS018660000	SK-7 Capsule SH	1,655


X28.039.302

X28.860.005

G806.203.528

G806.203.524

FSS05108M200

FSS05040M010

FSS05040M020

BS224001

BS226001

SAP-0018

FSS05040M010

**FSS018659000
FSS018660000**

**FSS018659000
FSS018660000**



MERIDIAN BLACK TECH

- ▶ PVD Black Tech coated Meridian for added scratch resistance
- ▶ 3 dive modes: SCUBA, APNEA or GAUGE
- ▶ Housing in 316L stainless steel with two-toned brushed finishing
- ▶ Exclusive integrated Heart Rate Monitor in DIVE and APNEA mode
- ▶ Algorithms with micro bubble levels and PDIS
- ▶ APNEA mode offers special alarms and warnings including ascent rate and low heart rate
- ▶ GAUGE mode until 120 m monitors depth, time and temperature without decompression calculations
- ▶ Full watch functions (date/time, stop-watch, thermometer, wake-up alarm)

Part No.	Detail	THB
X05.060.200	Meridian Black Tech	25,260



MERIDIAN

- ▶ Perfect combination between a multi-function wrist watch and a multi gas dive computer
- ▶ 3 dive modes: SCUBA, APNEA or GAUGE
- ▶ Housing in 316L stainless steel with two-toned brushed finishing
- ▶ Exclusive integrated Heart Rate Monitor in DIVE and APNEA mode
- ▶ Algorithms with micro bubble levels and PDIS
- ▶ APNEA mode offers special alarms and warnings including ascent rate and low heart rate
- ▶ GAUGE mode until 120 m monitors depth, time and temperature without decompression calculations
- ▶ Full watch functions (date/time, stop-watch, thermometer, wake-up alarm)

Part No.	Detail	THB
X05.060.100	Meridian	22,230



XZ05.060.003



X05.060.001



X05.060.004

MERIDIAN ACCESSORIES

Part No.	Detail	THB
X05.060.001	USB Cradle	4,425
X05.060.004	HRM Monitor	3,750
XZ05.060.003	Sports Strap	890



DX TITANIUM

- ▶ New, advanced Suunto Fused™ RGBM for CCR, technical and recreational diving
- ▶ Gas-switching between up to 8 gases
- ▶ Trimix support including helium & oxygen
- ▶ Four dive modes: CCR, air, mixed gas, gauge
- ▶ Integrated tilt-compensated 3D digital compass
- ▶ Optional wireless air integration (Transmitter)

For rebreather diving:

- ▶ A setpoint, non-monitoring dive computer with dedicated CCR mode
- ▶ Configure up to 3 different diluents
- ▶ Adjustable high and low setpoints, as well as custom setpoint during dive
- ▶ Automatic setpoints switching at specified depths
- ▶ Possibility to switch to open circuit mode in case of bailout

Part No.	Detail	THB
FSS019016000	DX w. Elastomer Strap	54,565
FSS019015000	DX w. Titanium Bracelet	68,165



D9tx TITANIUM

- ▶ Full continuous decompression algorithm (Suunto Technical RGBM)
- ▶ Gas-switching between up to 8 gases
- ▶ Trimix support including helium & oxygen
- ▶ Three modes: air, mixed gas, gauge
- ▶ Integrated tilt-compensated 3D digital compass
- ▶ Optional wireless air integration (Transmitter)
- ▶ Titanium bracelet option
- ▶ Included USB interface cable

Part No.	Detail	THB
FSS016915000	D9tx w. Titanium Bracelet	54,565
FSS016916000	D9tx w. Elastomer Strap	40,970



D6i STAINLESS STEEL

- ▶ Integrated tilt-compensated 3D digital compass
- ▶ Full continuous decompression algorithm
- ▶ Gas-switching capability
- ▶ Four dive modes: air, nitrox, free, gauge
- ▶ Optional wireless air integration (Transmitter)
- ▶ Steel bracelet option
- ▶ Included USB interface cable

Part No.	Detail	THB
FSS018400000	D6i w. Stainless Steel Bracelet	40,970
FSS018402000	D6i w. Elastomer Strap	35,080
FSS018543000	D6i Black w. Elastomer Strap	36,440
FSS019478000	D6i Black w. Steel Bracelet	45,505
FSS018744000	D6i w. White Elastomer Strap	35,080





D4i NOVO

- ▶ NEW Vibrant colours : Black, White, Blue & Lime
- ▶ NEW bezel and mask prints
- ▶ NEW soft silicone strap
- ▶ NEW metal buttons
- ▶ Full continuous decompression algorithm
- ▶ Three dive modes: air, nitrox, free
- ▶ Optional wireless air integration (Transmitter)
- ▶ Colour strap options
- ▶ Included USB interface cable

Part No.	Detail	THB
FSS020392000	D4i NOVO White w. USB	22,840
FSS020393000	D4i NOVO Blue w. USB	22,840
FSS020395000	D4i NOVO Lime w. USB	22,840
FSS020365000	D4i NOVO Black w. USB	22,840



VYPER WRIST COMPUTER

- ▶ 3 operating modes (Air, Nitrox, Gauge)
- ▶ Complete deco stop data
- ▶ Auto safety stop countdown
- ▶ Extended deco range (ceiling, floor)
- ▶ Electroluminescent illumination (backlight)
- ▶ User-replaceable battery
- ▶ Suunto RGBM
- ▶ Included USB interface cable

Part No.	Detail	THB
FSS019540000	Vyper Silver	13,780



VYPER AIR BLACK

- ▶ Electric 3D compass & tilt sensor
- ▶ Matrix display
- ▶ 2 gas switching
- ▶ Optional wireless air integration (Transmitter)
- ▶ Optional deep stop
- ▶ Dive profile displayed graphically on screen
- ▶ Included USB interface cable

Part No.	Detail	THB
FSS018539000	Vyper Air Black	18,880



ZOOP WRIST

- ▶ Air / Nitrox operating modes
- ▶ Complete deco stop data
- ▶ Multi step ascent rate indicator
- ▶ Extended deco range (ceiling, floor)
- ▶ User-replaceable battery
- ▶ Phosphorescent display illumination
- ▶ Depth display range 0-99m
- ▶ User-selectable metric or imperial units
- ▶ Suunto RGBM

Part No.	Detail	THB
FSS015964000	Zoop Wrist, Yellow	10,490
FSS016424000	Zoop Wrist, Orange	10,490
FSS019544000	Zoop Wrist, Black	10,490



HELO2

- ▶ Up to 8 gas mixes
- ▶ Suunto technical RGBM algorithm (including helium mixtures)
- ▶ Deep stops
- ▶ Matrix display
- ▶ Dive profile displayed graphically on the screen
- ▶ Seamless collaboration with dive planner
- ▶ Expanded personal adjustment
- ▶ Optional wireless air integration (Transmitter)

Part No.	Detail	THB
FSS014506000	HelO2	22,840



COBRA 3

Features of the Cobra 3.

- ▶ Electronic 3D compass & tilt sensor
- ▶ Matrix display
- ▶ 2 gas switching
- ▶ Optional deep stops
- ▶ Dive profile displayed graphically on screen

Part No.	Detail	THB
FSS014587000	Cobra 3	31,900
FSS018536000	Cobra 3 Black	
FSS014554000	Cobra 3 incl. Quick Release DM & USB Cable	35,525



TRANSMITTER LED

Transmitter for DX, D9tx, D6i, D4i, Vytec, Vyper air & HelO2

Part No.	Detail	THB
FSS01909800	Transmitter LED	11,850





	ZOOP	HELO2	VYPER	VYPER AIR	COBRA 3
User replaceable battery	YES	YES	YES	YES	YES
USB interface cable	Optional	Optional	Included	Optional	Optional
CNS% + OTU calculation (OLF)	YES	YES	YES	YES	YES
Max PO2 adjustment	1.2-1.6	0.5-1.6	1.2-1.6	0.5-1.6	0.5-1.6
O2 % setting	21-50 %	Up to 8 gases containing 8-99%	21-50%	Up to 2 gases containing 21-99%	Up to 2 gases containing 21-99%
Gas switching during dive	-	YES	-	YES	YES
Calendar clock	-	YES	YES	YES	YES
Dual time	-	-	-	-	-
Backlight type	Phosphorescent display	Electro-luminescent display	Electro-luminescent display	Electro-luminescent display	Electro-luminescent display
Operating temperature	0°C - +40°C / 32°F - +104°F	0°C - +40°C / 32°F - +104°F	0°C - +40°C / 32°F - +104°F	0°C - +40°C/32°F - +104°F	0°C NO +40°C / +32°F NO +104°F
Water resistance	100 m / 328 ft	150 m / 492 ft	-	150 m / 492 ft	150 m / 492 ft
Weight	68 g / 2.4 oz	68 g / 2.4 oz	68 g / 2.4 oz	110 g	210 g
Adjustable backlight duration	-	YES	YES	YES	YES
Matrix display	-	YES	-	YES	YES
Sapphire crystal glass	-	-	-	-	-
Ascent time display	Up to 99 min	Up to 199 min	Up to 99 min	Up to 99 min	Up to 99 min
Consumed bottom time graph	-	-	-	-	-
Lifetime history mode	-	-	-	-	-
Lifetime history memory	YES	YES	YES	YES	YES
Maximum depth display	99 m / 328 ft	150 m (492 ft)	150 m (492 ft)	150 m (492 ft)	150 m (492 ft)
Operation mode	Air, Nitrox	Air, Nitrox, Gauge	Air, Nitrox, Gauge	Air, Nitrox, Gauge	Air, Nitrox, Gauge
Profile sampling rates in seconds	30 s	10, 20, 30, 60 s	10,20,30,60s	1, 10, 20, 30, 60 s	1, 10, 20, 30, 60 s
Decompression algorithm	RGBM algorithm	Technical RGBM algorithm	RGBM algorithm	RGBM algorithm	RGBM algorithm
Compass	-	-	-	YES	YES
Deep Stops	-	YES	-	-	-
Dive time in seconds and minutes	-	In gauge mode	-	In gauge mode	In gauge mode
Wireless air integration	-	Optional	-	Optional	-
Built-in dive simulator	-	-	YES	YES	YES
Air time calculation	-	-	-	YES	-
3D digital compass	-	-	-	-	-
Graphic compass rose	-	-	-	YES	YES
Tilt compensated compass	-	-	-	YES	YES
8 gas mixes	-	YES	-	-	-
Helium	-	Up to 92%	-	-	-
Oxygen	-	8-99%	-	-	-
Stopwatch	-	-	-	-	-



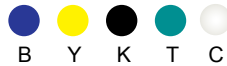
	D4i	D6i	D9tx	Dx
User replaceable battery	-	-	-	-
USB interface cable	Included	Included	Included	Included
CNS% + OTU calculation (OLF)	YES	YES	YES	YES
Max PO2 adjustment	0.5-1.6	0.5-1.6	0.5-1.6	0.5-1.6
O2 % setting	Up to 3 gases containing 21-99%	Up to 3 gases containing 21-99%	Up to 8 gases, oxygen 8-99%, helium 0-92%	Up to 8 gases, oxygen 5-99%, helium 0-95%
Gas switching during dive	YES	YES	YES	YES
Calendar clock	YES	YES	YES	YES
Dual time	YES	YES	YES	YES
Backlight type	Electro-luminescent display	Electro-luminescent display	Electro-luminescent display	Electro-luminescent display
Operating temperature	0°C - +40°C / 32°F - +104°F	0°C - +40°C / 32°F - +104°F	0°C - +40°C/32°F - +104°F	0°C - +40°C/32°F - +104°F
Water resistance	150 m / 492 ft	150 m / 492 ft	200 m / 660 ft	200 m / 660 ft
Weight	113 g / 4 oz	113 g / 4 oz	110 g	107 g with elastomer strap / 182 g with titanium strap
Adjustable backlight duration	YES	YES	YES	YES
Matrix display	YES	YES	YES	YES
Sapphire crystal glass	-	Black only	YES	YES
Ascent time display	Up to 199 min	Up to 199 min	Up to 199 min	Up to 999 min
Consumed bottom time graph	-	YES	YES	YES
Lifetime history mode	Scuba, Freedive	Scuba, Freedive	Scuba	Scuba
Lifetime history memory	-	YES	YES	YES
Maximum depth display	100m/328ft	150 m / 492 ft	200 m / 660 ft	300 m / 984 ft
Operation mode	Air, Nitrox, Gauge, Free, Off, Watch	Air, Nitrox, Gauge, Free, Watch	Air, Gauge, Free, Off, Watch, Mixed gas	Air, Gauge, Off, Watch, Mixed Gas, CCR
Profile sampling rates in seconds	1, 2, 5, 10, 20, 30, 60 s	1, 2, 5, 10, 20, 30, 60 s	1, 2, 5, 10, 20, 30, 60 s	1, 2, 5, 10, 20, 30, 60 s
Decompression algorithm	RGBM algorithm	RGBM algorithm	Technical RGBM algorithm	Fused™ RGBM algorithm
Compass	YES	YES	YES	YES
Deep Stops	YES	YES	YES	YES
Dive time in seconds and minutes	In free mode	In free / gauge mode	In gauge mode	In gauge mode
Wireless air integration	Optional	Optional	Optional	Optional
Built-in dive simulator	-	-	-	-
Air time calculation	-	-	-	-
3D digital compass	YES	YES	YES	YES
Graphic compass rose	-	-	-	-
Tilt compensated compass	YES	YES	YES	YES
8 gas mixes	-	-	YES	YES
Helium	-	-	Up to 92%	Up to 95%
Oxygen	-	-	8-99%	5-99%
Stopwatch	In time / dive mode	In time / dive mode	In time / dive mode	In time / dive mode



BORA MASK

- ▶ Ideal for rental
- ▶ Double lens tempered glass
- ▶ Durable with a comfort fit
- ▶ Low volume design for easy clearing
- ▶ Clear skirt colours: Black , Blue Trans. & Yellow
- ▶ Black skirt colour: Black & Yellow

Part No.	Detail	THB
DBMA36	Bora Mask Clear Skirt	600
DBMA36KS-K	Bora Mask Black Skirt	600



MALIBU MASK

- ▶ Double lens tempered glass
- ▶ Exceptional field of vision
- ▶ Durable with a comfort fit
- ▶ Colours: Black, Blue, Clear, Teal & Yellow

Part No.	Detail	THB
DBMA68	Malibu Mask Clear Skirt	820



BALI FRAMELESS MASK

- ▶ Single lens w. tempered glass
- ▶ Exceptional field of vision
- ▶ Low volume design for easy clearing
- ▶ Soft silicone skirt
- ▶ Durable with a comfort fit

Part No.	Detail	THB
DBMA69-KK	Bali Frameless Black Skirt	860



AZORES MASK

- ▶ Junior/Lady double lens w. tempered glass
- ▶ Durable and comfortable fit for small faces
- ▶ Low volume design for easy clearing
- ▶ Ideal for rental
- ▶ Colours: Blue & Yellow Transparent

Part No.	Detail	THB
DB7MA88	Azores Mark Clear Skirt	640



SIMILAN MASK

- ▶ Junior/Lady single lens w/tempered glass
- ▶ With a comfortable fit for small faces
- ▶ Low volume for easy clearing
- ▶ Colours: Green, Pink & Yellow Transparent

Part No.	Detail	THB
DB5MA70P	Similan Mask PVC	395

TAHITI MASK

- ▶ Double lens tempered glass
- ▶ Exceptional field of vision
- ▶ Quick adjustment buckle button
- ▶ Durable with a comfortable fit
- ▶ Colours: Blue Trans. & Yellow

Part No.	Detail	THB
DBMD05	Tahiti Mask Clear Skirt	700



FIJI PVC MASK FOR KIDS

- ▶ Low volume design for easy clearing
- ▶ Quick release buckles
- ▶ Colours: Blue Trans., Pink Trans. & Yellow

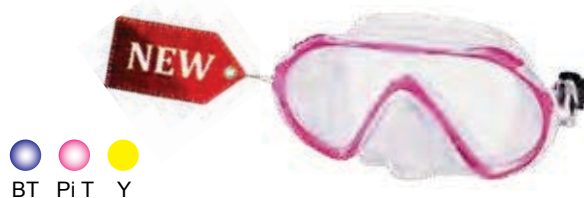
Part No.	Detail	THB
DB4MB52P	Fiji Mask for Kids PVC	395



FIJI SILICONE MASK FOR KIDS

- ▶ Durable with a comfortable fit
- ▶ Low volume design for easy clearing
- ▶ Quick release buckles
- ▶ Colours: Blue Trans., Pink Trans. & Yellow

Part No.	Detail	THB
DB8MB52	Fiji Mask for Kids Silicone Skirt	780



COVERT MASK

- ▶ Dual lens (tempered glass)
- ▶ Durable with a comfortable fit
- ▶ Ultra low volume design
- ▶ Swivel buckles for easy adjustment
- ▶ Black silicone strap & black "Matte" silicone skirt

Part No.	Detail	THB
DBMC24	Covert Mark Black Skirt	1,070



ANDAMAN MASK

- ▶ Single lens tempered glass
- ▶ Exceptional field of vision
- ▶ Durable with a comfortable fit
- ▶ Colours: Black & Blue Trans., Yellow

Part No.	Detail	THB
DBMA66	Andaman Mask Clear Skirt	880



UNO SINGLE LENS MASK

- ▶ Durable with a comfortable fit
- ▶ Low volume design for easy clearing
- ▶ Swivel buckles for easy adjustment
- ▶ Colours: Blue Trans., Black Trans. & Yellow

Part No.	Detail	THB
DBMC25	Uno Mask Clear Skirt	920



HAWAII MASK

- ▶ Double lens tempered glass
- ▶ Exceptional field of vision
- ▶ Durable with a comfortable fit
- ▶ Colours: Blue & Yellow Trans.

Part No.	Detail	THB
DB3MA56P	Hawaii Mask PVC	395





K



Ti B R

MARIN MASK

- ▶ Low volume dual lens design
- ▶ Exclusive soft touch frame
- ▶ Open side frame for increased peripheral vision
- ▶ Clear skirt colours: Blue, Titanium & Red
- ▶ Black skirt colours: Black / Titanium

Part No.	Detail	THB
X24.856	Marin	2,390



Ti B R

MARIN 2 MASK (for small faces)

- ▶ Low volume dual lens design
- ▶ Exclusive soft touch frame
- ▶ Open Side frame for increased peripheral vision
- ▶ Clear skirt colours: Blue & Red

Part No.	Detail	THB
X24.857	Marin 2	2,085



K



Y B R

SPECTRA w. METALLIC SUBFRAME

- ▶ Dual-Lens, Low volume for clearing convenience, yet designed for maximum visibility
- ▶ Universal, super comfortable fit for a variety of face shapes
- ▶ Bold colors, including duotones
- ▶ Swivel buckles for easy adjustment
- ▶ Tempered glass for safety and durability
- ▶ Clear skirt colours: Blue, Red & Yellow
- ▶ Black skirt colour: Silver / Black

Part No.	Detail	THB
X24.847	Spectra	2,445



C Pi

SPECTRA 2 MASK (for small faces)

- ▶ Compact two-window design.
- ▶ Swivel buckles for easy adjustment.
- ▶ Tempered glass lenses.
- ▶ Crystal clear or black double sealed silicone skirt.
- ▶ Exclusive paint process, giving your mask the rich look of stylish eye-wear, underwater.
- ▶ Clear skirt colours: Pink & White

Part No.	Detail	THB
X24.851	Spectra 2	2,340



TRINIDAD FRAMELESS MASK

- ▶ Lens and skirt are assembled without any frame. Reduces weight and size.
- ▶ Single lens style for uninterrupted vision.
- ▶ Extremely low volume mask makes clearing water easy.
- ▶ One hand quick adjust buckle system.
- ▶ Soft, black or clear silicone skirt.
- ▶ Tempered glass lens.

Part No.	Detail	THB
X94.071.000	Trinidad	1,730

CRYSTAL VU METALLIC MASK

- ▶ Patented single-lens design with seamless side window design for a panoramic field of vision
- ▶ Crystal-clear, double-sealed silicone skirt for superior fit and comfort
- ▶ Low-volume styling for a snug fit and ease of clearing
- ▶ Clear skirt colours: Black, Blue, Red, White & Yellow
- ▶ Black skirt colour: Black/Silver

Part No.	Detail	THB
X248551	Crystal Vu, Metallic Clear Skirt	2,750
X248551-KSi	Crystal Vu, Metallic-Black/Silver	2,750



●
K



● ● ● ●
B Y R W

SOLO MASK

- ▶ Dual colored frameless single-lens design for significantly increased field of vision
- ▶ Crystal clear double sealed silicone skirt for superior fit and comfort.
- ▶ Low volume design for easy clearing.
- ▶ Non-slip strap with easy adjustable buckle.
- ▶ Tempered glass lens.

Part No.	Detail	THB
X24.849KS	Solo	2,395



SPECTRA - TRUFIT MASK

- ▶ A metallic-look frame twin-lens mask.
- ▶ Exclusive paint process gives your mask the look of stylish eyewear.
- ▶ Trufit exclusive skirt allows a perfect fit to a variety of faces.
- ▶ Clear skirt colours: Blue
- ▶ Black skirt colour: Black w. Mirrored Lens

Part No.	Detail	THB
X24.710.135KS	Spectra - Trufit Mask, Black	3,055
X24.710.200	Spectra - Trufit Mask, Blue	2,650



FRAMELESS MASK

- ▶ Single-lens mask featuring a unique assembly of lens and skirt without a frame.
- ▶ Original unique design for unbeatable comfort and fit and classic robust quality.
- ▶ Buckles positioned on exterior of mask body for convenience and comfort.
- ▶ Reduced weight, size and volume makes clearing water easy.

Part No.	Detail	THB
X24340	Frameless	3,055





ACTION MASK

- ▶ Unique hybrid design gives the benefits of a frameless mask with the strength of a subframe.
- ▶ Low volume single lens for a wide field of vision
- ▶ Available in:
- ▶ Clear skirt colours: **Black & Blue**
- ▶ Black skirt colours: **Black**

Part No.	Detail	THB
G824.101	Action Clear Silicone	1,630
G824.101.110	Action Black Silicone	1,630



ZOOM MASK

- ▶ Dual lens (tempered glass)
- ▶ Durable with a comfort fit
- ▶ Low volume design for easy clearing
- ▶ Quick release buckles
- ▶ Silicone strap
- ▶ Silicone skirt
- ▶ Clear skirt colours: **Black, Blue & Yellow**
- ▶ Black skirt colours: **Black**

Part No.	Detail	THB
G824.151	Zoom 2 lens Clear Silicone	1,475
G824.151.150	Zoom 2 lens Black Silicone	1,475



K/Y



K K/Y

PHANTOM MASK

Poseidon's double lens mask. Designed for best possible view area, a silicone mask that fits most faces. Flexible strap buckle for comfort.

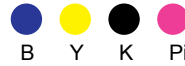
- ▶ Black skirt colours: **Black, Black/Yellow**
- ▶ Clear skirt colours: **Black/Yellow**

Part No.	Detail	THB
E0720	Phantom Mask	2,920

BOSS SILICONE MASK

- ▶ Single Lense tempered glass
- ▶ Frame: Polycarbonate
- ▶ Strap: Silicone
- ▶ Skirt: Hypoallergenic liquid silicone
- ▶ Packaging: Rigid transparent case included
- ▶ Clear silicone colours: Black, Blue, Pink & Yellow
- ▶ Black silicone colour: Black

Part No.	Detail	THB
B9232KS-K	Boss Black / Black Silicone	1,750
B9231	Boss Clear Silicone	1,750



IENA SILICONE MASK

- ▶ Dual lens tempered glass
- ▶ Frame: Polycarbonate
- ▶ Strap: Silicone
- ▶ Skirt: Hypoallergenic liquid silicone
- ▶ Packaging: Rigid transparent case included
- ▶ Clear silicone colours: Black, Blue & Yellow
- ▶ Black silicone colour: Black

Part No.	Detail	THB
B9239KS-K	Iena Black / Black Silicone	1,750
B9238	Iena Clear Silicone	1,750



ANGEL SILICONE MASK

- ▶ Dual lens tempered glass
- ▶ Frame: Polycarbonate
- ▶ Strap: Silicone
- ▶ Packaging: Rigid transparent case included
- ▶ Skirt: Hypoallergenic liquid silicone
- ▶ Packaging: Rigid transparent case included
- ▶ Clear silicone colours: Black, Blue, Pink & Red
- ▶ Black silicone colour: Black

Part No.	Detail	THB
B9237KS-K	Angel Black/Black Silicone	1,472
B9236	Angel Clear Silicone	1,472



EXTREME SILICONE MASK

- ▶ Clear or black liquid silicone skirt
- ▶ Tempered glass lenses
- ▶ Quick adjustment buckle button
- ▶ Clear silicone colours: Blue & Yellow
- ▶ Black silicone colour: Black

Part No.	Detail	THB
B936KS-K	Extreme Black / Black Silicone	1,400
B939	Extreme Clear Silicone	1,400





MARINA MASK (for small faces)

- ▶ Single lens mask with tempered glass
- ▶ Suitable for small faces / junior
- ▶ Clear silicone colours: Blue, Pink & Yellow

Part No.	Detail	THB
B9426	Marina Clear Silicone	890



CAPRI MASK

- ▶ Double-lens mask in tempered glass
- ▶ Hypoallergenic phthalate-free Siltra (yellow only)
- ▶ Clear silicone colours: Black, Blue, Clear & White
- ▶ Black silicone colour: Black

Part No.	Detail	THB
B9420	Capri Clear Silicone	1,305
B9421KS-K	Capri Black Silicone	1,305



CHARM MASK

- ▶ Frame: polycarbonate with soft overprint in elastomer
- ▶ Skirt: high-quality hypoallergenic liquid silicone
- ▶ Strap: silicon
- ▶ Single lens tempered glass
- ▶ Clear silicone colours: Blue, White & Yellow
- ▶ Black silicone colour: Black

Part No.	Detail	THB
B0602	Charm Clear Silicone	2,385
B0603KS-K	Charm Black Silicone	2,385



RUNNER SILICONE MASK

- ▶ Unique silicone skirt that fits broad range of faces
- ▶ Low profile & low volume
- ▶ Lightweight design
- ▶ Optical lenses available
- ▶ Tempered glass lens
- ▶ Comfortable seal
- ▶ Black colours: Black, Blue, Green & Yellow Transparent
- ▶ Clear colours: Green, Blue, Black & Clear

Part No.	Detail	THB
S1083KS	Runner Black Silicone	1,004
S1083S	Runner Clear Silicone	1,004

OPTICAL LENSES FOR RUNNER MASK

Optical lens available from -1.0 through -7.0, in 0.5 increments, & -8.0 through -10.0 in 1.0 increments.

Part No.	Detail	THB
S1083OP	Optical Lenses (EACH)	940

WIDE VISION MASK

- ▶ Superseal, super comfortable, super vision
- ▶ Tempered glass & low volume

Part No.	Detail	THB
SMM108	Wide Vision Clear Silicone	1,104
SMM108KS-K	Wide Vision Black Silicone	1,104

JUNIOR MASK SILICONE

- ▶ Fits small faces
- ▶ Single lens with wide field of vision
- ▶ Low volume & tempered glass lens
- ▶ Colours: Blue, Green & Yellow Transparent

Part No.	Detail	THB
SMS102	Junior Mask Silicone	880

PRO EAR 2000

The ProEar 2000 is an important breakthrough in diving safety & comfort. The first effective system which allows divers to dive & keep their ears dry, warm & protected from the elements of pressure.

Part No.	Detail	THB
MPE10	Pro Ear 2000	3,245

FRAMELESS MASK

- ▶ Single lens, frameless mask
- ▶ Tempered glass w/no drag in water
- ▶ 30% increase in underwater vision
- ▶ Extremely low volume & 100% liquid silicone skirt

Part No.	Detail	THB
SMM107-C	Frameless Clear Silicone	1,152
SMM107KS	Frameless Black Silicone	1,152

AQUA OPTIX

- ▶ Flexible mask magnifiers
- ▶ 2 per package
- ▶ 1.0 - 3.0 Diopter in units of 0.25 diopter

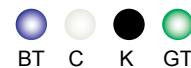
Part No.	Detail	THB
TFM91	Aqua Optix	1,480



Runner Mask
Black Skirt



Runner Mask
Clear Skirt



Optical Lenses



Wide Vision
Clear Skirt



BT



Wide Vision
Black Skirt



K



Junior Mask
Clear Skirt



BT Y FG



Pro Ear 2000



Frameless Mask



K C



Aqua Optix



MANTA PLUS SNORKEL

- ▶ Semi dry top
- ▶ Replaceable silicone mouthpiece
- ▶ Corrugated PVC flex
- ▶ Quick release snorkel holder
- ▶ Purge valve at lowest point for effortless clearing
- ▶ Colours: Black, Blue Trans. & Yellow

Part No.	Detail	THB
DB1SA106	Manta Plus Snorkel	360



MARLIN SNORKEL

- ▶ Replaceable silicone mouthpiece (clear)
- ▶ Quick release snorkel holder
- ▶ Lightweight design, Ideal for rental
- ▶ Clear silicone colours: Black, Blue Trans., Clear, Teal & Yellow
- ▶ Black silicone colour: Black

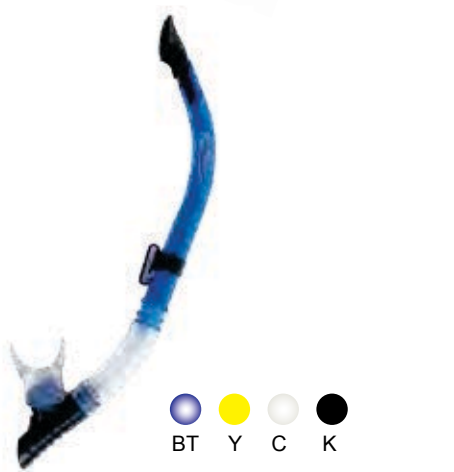
Part No.	Detail	THB
DBSA91	Marlin Clear Silicone	240
DBSA91-KSK	Marlin Black Silicone	240



STINGRAY SNORKEL

- ▶ Contour semi dry top
- ▶ Replaceable silicone mouthpiece
- ▶ Corrugated silicone flex
- ▶ Large bore tube for easy breathing
- ▶ Quick release snorkel holder
- ▶ Clear silicone colours: Black, Blue Trans., Clear & Yellow
- ▶ Black silicone colour: Black

Part No.	Detail	THB
DBSA105	Stingray Clear Silicone	440
DBSA105-KK	Stingray Black Silicone	440



SHARKY SNORKEL

- ▶ Semi dry top
- ▶ Replaceable silicone mouthpiece
- ▶ Corrugated silicone flex
- ▶ Quick release snorkel holder
- ▶ Colours: Black, Blue Trans., Clear, Teal & Yellow

Part No.	Detail	THB
DBSB47	Sharky Snorkel	482

DOLPHIN SNORKEL

- ▶ Semi dry top
- ▶ Junior / lady size
- ▶ Replaceable PVC junior mouthpiece
- ▶ Quick release snorkel holder
- ▶ Colours: Blue & Yellow Transparent

Part No.	Detail	TBH
DB7SA61	Dolphin Snorkel	280



BT YT

GOBY SNORKEL

- ▶ Junior size w/junior mouthpiece
- ▶ Comfortable extra wide snorkel holder
- ▶ Colours: Blue, Green, Pink Transparent & Yellow

Part No.	Detail	THB
DBSB36	Goby Snorkel	180



PiT YT GT BT

MAKO SNORKEL

- ▶ Semi dry top
- ▶ Replaceable PVC mouthpiece
- ▶ Quick release snorkel holder
- ▶ Purge valve at lowest point for effortless clearing
- ▶ Colours: Blue Trans. & Yellow

Part No.	Detail	THB
DB3SB35	Mako Snorkel	200



BT Y

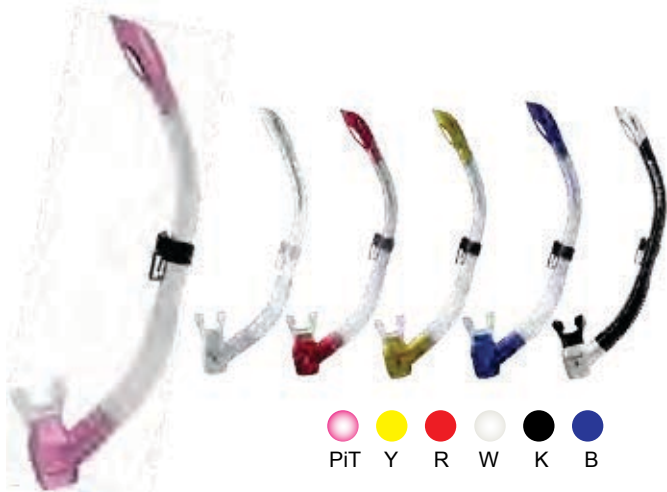
DAMSEL SNORKEL

- ▶ Semi dry top
- ▶ Junior / lady size
- ▶ Silicone mouthpiece
- ▶ Quick release snorkel holder
- ▶ Purge valve at lowest point for effortless clearing
- ▶ Colours: Blue & Pink Trans., Yellow

Part No.	Detail	THB
DB8SA102	Damsel Snorkel	300



BT PiT Y



SPECTRA SNORKEL

- ▶ Semi-dry top design helps prevent water entry into tube.
- ▶ Large bore tube for easy breathing.
- ▶ Flexible, corrugated joint drops snorkel from face when not in use.
- ▶ Ergonomic regulator style mouthpiece for added comfort.
- ▶ Purge valve at lowest point for effortless clearing.
- ▶ Colours: Black w. Silver, Blue, Pink, Red & White & Yellow

Part No.	Detail	THB
X26.704	Spectra Snorkel	1,115



PHOENIX 2 DRY SNORKEL

- ▶ Comfortable, high grade silicone mouthpiece.
- ▶ Flexible, corrugated section drops snorkel from face when not in use.
- ▶ Durable universal snorkel keeper.
- ▶ Purge valve for ease of clearing.
- ▶ Patented dry snorkel design
- ▶ Colours: Black, Blue & Yellow

Part No.	Detail	THB
X267111	Phoenix 2 Dry Snorkel	1,265



ESCAPE SNORKEL

- ▶ Semi-dry top design prevents water entry into tube
- ▶ Large bore tube for easy breathing
- ▶ Flexible, corrugated section drops snorkel from face when not in use
- ▶ Ergonomic mouthpiece for added comfort
- ▶ Purge valve at lowest point for effortless clearing
- ▶ Cellphone-style removable clip
- ▶ Colours: Black, Blue & Yellow

Part No.	Detail	THB
X26715	Escape Snorkel	860



TRINIDAD SNORKEL

- ▶ Vented flexible snorkel
- ▶ Splash guard
- ▶ Silicone mouthpiece
- ▶ Available in black

Part No.	Detail	THB
X96.071.000	Trinidad Snorkel	760

FUSION PRO SNORKEL

- ▶ Modern and comfortable snorkel
- ▶ Water drain valve and effective splash guard
- ▶ Silicone mouthpiece exchangeable.
- ▶ Flexible drop away system for Scuba Divers

Part No.	Detail	THB
G826.039	Fusion Pro Snorkel	910



EXPRESS SNORKEL

- ▶ Large bore tube for easy breathing
- ▶ Splash guard design minimizes water entry into tube
- ▶ Premium silicone mouthpiece
- ▶ Clip on snorkel holder
- ▶ Purge valve at lowest point for effortless clearing
- ▶ Flexible, corrugated section drops snorkel from face when not in use
- ▶ Colours: Black, Blue & Yellow

Part No.	Detail	THB
G826.128	Express Snorkel	705



FLAIR SNORKEL

- ▶ J-style open bore snorkel for unobstructed breathing
- ▶ Soft silicone mouthpiece
- ▶ Build in snorkel keeper
- ▶ Colours: Blue

Part No.	Detail	THB
G826.129	Flair Snorkel	340





●
K

● ● ● ● ●
B C Pi Y R

K2 HD SNORKEL

- ▶ Ergonomic semi-rigid tube with the innovative Top Antisplash shape.
- ▶ Mouthpiece liquid Silicone
- ▶ NEW PURGE VALVE SYSTEM: the special oval form allows a rapid emptying of water
- ▶ Clear silicone colours: Blue, Pink, Red, White & Yellow
- ▶ Black silicone colour: Black

Part No.	Detail	THB
B426	K2 HD Clear Silicone	856
B426KS-K	K2 HD Black Silicone	856



SILICONE PURGE VALVE SNORKEL

- ▶ Snorkel semi dry top system
- ▶ Quick release snorkel holder mask strap & easy adjustable snorkel holder.
- ▶ Clear dotted silicone mouthpiece & clear silicone corrugated flex joint
- ▶ Colour: Blue & Yellow Transparent, Black, Green & Yellow
- ▶ Black silicone colour : Black

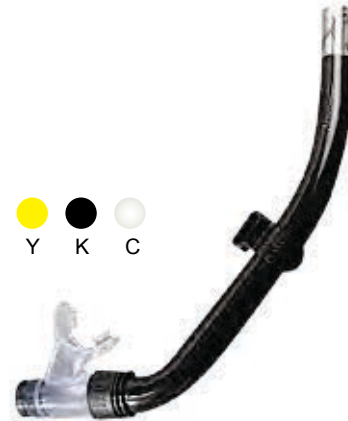
Part No.	Detail	THB
S1057S	Silicone (Silicone Joint)	684
S1057KS-K	Black Silicone	684



SILICONE SNORKEL, PURGE VALVE

- ▶ Swivel mouthpiece
- ▶ Amazing comfort
- ▶ PVC soft pipe
- ▶ Easy clearing
- ▶ Silicone mouthpiece
- ▶ Colours: Blue & Green Transparent, Black, Clear & Yellow

Part No.	Detail	THB
S1156S	Silicone Snorkel Purge Valve	462



STANDARD SNORKEL

- ▶ Swivel mouthpiece
- ▶ PVC soft pipe & amazing comfort
- ▶ Large-bore tube for easy clearing
- ▶ Available in silicone or rubber mouthpiece
- ▶ Silicone Colours: Blue & Green Transparent, Black, Blue Lagoon, Purple & Yellow
- ▶ Rubber Colours: Blue & Green Transparent, Black, Green & Yellow

Part No.	Detail	THB
S1052	Rubber Snorkel	276
S1052S	Silicone Snorkel	376



SILICONE SNORKEL (PVC JOINT) PURGE VALVE

- ▶ Silicone dotted mouthpiece
- ▶ Purge valve for easy clearing
- ▶ Maximum air volume intake and exhaust
- ▶ Quick releasing mask strap and easy adjustable snorkel holder
- ▶ PVC corrugated flex joint
- ▶ Colours: Black, Blue Transparent & Yellow

Part No.	Detail	THB
S1247Q	Silicone Snorkel (PVC) Purge Valve	474





SWIM GOGGLES - ADULT

- ▶ Silicone skirt
- ▶ Anti-fog
- ▶ 100% UV protection
- ▶ Adjustable nose clip
- ▶ Colours: Black, Blue & Blue Lagoon

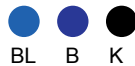
Part No.	Detail	THB
S1281AS	Swim Goggles - Adult	456



SWIM GOGGLES - JUNIOR

- ▶ Silicone skirt
- ▶ Anti-fog
- ▶ 100% UV protection
- ▶ Adjustable nose clip
- ▶ Colours: Black, Blue & Yellow

Part No.	Detail	THB
SS5	Swim Goggles - Junior	254



SWIM GOGGLES MARINER CLEAR

- ▶ Silicone skirt & strap
- ▶ PVC lens
- ▶ Quick release buckles
- ▶ Colours: Black, Blue & Blue Lagoon

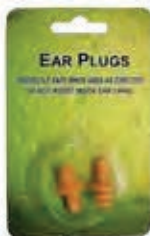
Part No.	Detail	THB
SK5	Goggle Mariner Clear	766



SWIM GOGGLES MARINER UV

- Same design as Mariner SK5 but with added UV Protection.
- ▶ Colours: Black, Blue & Blue Lagoon

Part No.	Detail	THB
SK5UV	Goggle Mariner UV	870



EAR PLUGS

Part No.	Detail	THB
SE4	Ear Plugs	84



NOSE CLIP

Part No.	Detail	THB
SN2	Nose Clip	96

DB1BAG SET

- ▶ Bora mask, Manta snorkel & Speed1 fins
- ▶ Durable silicone mask with tempered glass
- ▶ Snorkel with dry-top, purge valve and changeable silicone standard mouth piece
- ▶ Full foot fins
- ▶ Large mesh bag with shoulder strap
- ▶ Colours: Black, Blue & Yellow

Part No.	Detail	THB
DB1Bag	DB1Bag	1,830


DB2BAG SET

- ▶ Bora mask & Manta snorkel
- ▶ Durable silicone mask with tempered glass
- ▶ Snorkel with dry-top, purge valve and changeable silicone standard mouth piece
- ▶ Mesh bag
- ▶ Colours: Black, Blue & Yellow

Part No.	Detail	THB
DB2Bag	DB2Bag	980


DB2CLAM SET

- ▶ Bora mask & Manta snorkel
- ▶ Durable silicone mask with tempered glass
- ▶ Snorkel with dry-top, purge valve and changeable silicone standard mouth piece
- ▶ Mesh bag
- ▶ Colours: Black, Blue & Yellow

Part No.	Detail	THB
DB2Clam	DB2Clam	995


DB3BAG SET

- ▶ Tempered glass lenses
- ▶ Quick adjustment buckle button
- ▶ Durable with a comfort fit
- ▶ Corrugated PVC flex
- ▶ Replaceable PVC mouthpiece
- ▶ Quick release snorkel holder
- ▶ Mesh bag
- ▶ Colours: Blue & Yellow Transparent

Part No.	Detail	THB
DB3Bag	DB3Bag	550





DB4BAG SET (JUNIOR)

- ▶ Junior / lady single lens w/tempered glass
- ▶ With a comfortable fit for small faces
- ▶ Clear PVC skirt & low volume for easy clearing
- ▶ Edged semi dry top
- ▶ Replaceable PVC mouthpiece
- ▶ Junior size w/Junior mouthpiece
- ▶ Mesh bag
- ▶ Colours: Blue & Yellow Transparent

Part No.	Detail	THB
DB4Bag	DB4Bag	500



DB7BAG SET (JUNIOR)

- ▶ Azores mask, Dolphin snorkel
- ▶ Durable Junior silicone mask with tempered glass
- ▶ Junior PVC snorkel with dry-top, purge valve & changeable standard mouth piece
- ▶ Mesh bag
- ▶ Colours: Blue & Yellow Transparent

Part No.	Detail	THB
DB7BAG	Junior Set	950



DB7CLAM SET (JUNIOR)

- ▶ Azores mask, Dolphin snorkel
- ▶ Durable Junior silicone mask with tempered glass
- ▶ Junior PVC snorkel with dry-top, purge valve & changeable standard mouth piece
- ▶ Mesh bag
- ▶ Colours: Blue & Yellow Transparent

Part No.	Detail	THB
DB7CLAM	Junior Set	990

SPEED1 FINS - FULL FOOT

- ▶ Full foot snorkeling fins
- ▶ Colours: Black, Blue & Yellow
- ▶ Sizes: XS, S, M, L & XL

Part No.	Detail	THB
DBF41XS-M	Size 38-43	760
DBF41L-XL	Size 44-47	795



● B ● Y ● K

SPEED2 FINS - FULL FOOT

- ▶ Full foot snorkeling fins
- ▶ Colours: Blue & Yellow
- ▶ Sizes: 5XS, 4XS, 3XS, 2XS, XS, S, M, L & XL

Part No.	Detail	THB
DBF367-5XS-3XS	Size 28-33	750
DBF367-2XS-S	Size 34-39	850
DBF367M-XL	Size 40-46	990



● B ● Y

SPEED3 FINS - ADJUSTABLE

- ▶ Adjustable open heel snorkelling fin
- ▶ Ideal for both adults & children
- ▶ Adult colours: Black, Yellow & Blue Transparent
- ▶ Adult sizes: S/M & L/XL
- ▶ Junior colours: Blue & Pink Transparent, Yellow
- ▶ Junior sizes: S/M, M/L & LG

Part No.	Detail	THB
DBFB86SM-85LXL	Speed3 Adult	850
DBFB87SM-89L	Speed3 Junior	590



SNORKELING FINS - ADJUSTABLE (JUNIOR)

- ▶ Junior / Ladies size
- ▶ Fully adjustable
- ▶ Sizes: S/M, & ML/XL
- ▶ Colours: Green, Pink & Yellow

Part No.	Detail	THB
DBFA22-3	Snorkeling Fins	550



● G ● Y ● Pi

SNORKELING FINS - ADJUSTABLE

- ▶ Available sizes: S/M, ML/XL
- ▶ Colours: Black, Blue & Yellow

Part No.	Detail	THB
DBF770S/M	Size S/M	800
DBF770L/XL	Size ML/XL	800



● B ● Y ● K



B Y R Gp

TWIN JET MAX FINS - OPEN HEEL

- ▶ Quick release easy adjustable buckles
- ▶ Bio engineered soft foot pocket for seamless energy transfer
- ▶ Bi-material blade for ideal flex & performance
- ▶ Proven patented split-fin technology
- ▶ Available sizes: S, M, L, XL
- ▶ Colours: Blue, Graphite, Red & Yellow

Part No.	Detail	THB
X25.345	Twin Jet Max Graphite	4,835
X25.346	Twin Jet Max Red	5,415
X25.347	Twin Jet Max Blue	5,415
X25.348	Twin Jet Max Yellow	5,415



B K

JET CLUB FULL - FULL FOOT

- ▶ Lightweight full foot fin comfortable & suitable for all divers
- ▶ Ergonomic foot pocket
- ▶ Vented blade for an efficient use of power
- ▶ Three material construction
- ▶ Colour: Black & Blue

Part No.	Detail	THB
X25.021-2	Jet Club Full Foot Fin	1,980



B W K

SEAWING NOVA / GORILLA FINS - OPEN HEEL

- ▶ Pivot control technology ensures the most efficient angle of attack is maintained no matter how hard or gently you kick.
- ▶ Generating thrust without drag or wasted energy
- ▶ Clean water blade less drag & increased thrust.
- ▶ Wing tips to increase high-speed stability
- ▶ Ergo2 foot pocket with power plate for the best comfort & power transmission
- ▶ Marine quality bungee heel strap with custom adjustment system for total comfort & convenience
- ▶ Sizes: S, M, L & XL
- ▶ Colour: Black, Blue & White

Part No.	Detail	THB
X25.705-K	Seawing Nova Gorilla Black	8,305
X25.713-W	Seawing Nova White	7,820
X25.718-B	Seawing Nova Blue	7,820

JET SPORT FINS - OPEN HEEL / FULL FOOT

- ▶ Big blade for a truly powerful response in the water.
- ▶ Drag reducing vents substantially decrease resistance on both up and down strokes.
- ▶ Three material blade construction optimizes flex and comfort to achieve a high level of performance.
- ▶ Ergonomic foot pocket.
- ▶ Quick release buckles (for Open Heel)
- ▶ Available in Black/Grey, Blue, Red & Yellow
- ▶ Sizes: XS, S, M, L & XL

Part No.	Detail	THB
X25.878-881	Jet Sport Open Heel	3,155

- ▶ Available in Black/Grey
- ▶ Sizes: XS, S, M, L & XL

Part No.	Detail	THB
X25.883	Jet Sport Full Foot	1,390



Jet Sport Full Foot



Jet Sport Open Heel



JET FIN CLASSIC - OPEN HEEL

- ▶ Long history of performance. Considered the standard for power & durability since 1965.
- ▶ Proven vented design: Decreases drag on the upstroke; enhances thrust on the downstroke.
- ▶ Adjustable heel strap.

Part No.	Detail	THB
X25.365.400-600	Jet Fin w. Spring Straps size: L, XL, XXL	6,375
X25.351-2	Jet Fin w. Rubber Straps size: M, XXXL	5,415



Jet Fin Classic Spring Strap



Jet Fin Classic Rubber Strap



TWIN JET FINS - OPEN HEEL

- ▶ Patented split-fin propeller technology
- ▶ Drag-reducing vents substantially decrease resistance on both up & down strokes.
- ▶ Extended soleplate acts like a lever to enhance power stroke. Semi-rigid side rails add blade stability throughout kick.
- ▶ Quick-connect swivel buckles.
- ▶ Molded from a siff compound to deliver a slightly negative buoyancy.
- ▶ Available in colours: Black & Blue
- ▶ Available sizes: S, M, L & XL

Part No.	Detail	THB
X25385-8	Twin Jet Fins	6,760





FLUIDA FINS - FULL FOOT

- ▶ Soft foot pocket, resistant blade
- ▶ Colours: Turquoise
- ▶ Sizes: 27/30, 31/33, 34/35, 36/37, 38/39, 40/41, 42/43, 44/45, 46/47

Part No.	Detail	THB
G825.280	Fluida Fins	1,005



JET FIN SAEKODIVE - OPEN HEEL

- ▶ High quality rubber fins
- ▶ Suitable for strong foot power & speed
- ▶ Black colour

Part No.	Detail	THB
S2030	Jet Fin Saekodive - XL	2,570
S2031	Jet Fin Saekodive - L	2,570
S2032	Jet Fin Saekodive - M	2,570

GP100 FINS - OPEN HEEL

The GP-100 Fin derives from an age-old tradition of the best fins and evolved as a result of cutting-edge engineering and the latest developments in material science. The two-button safety buckle prevents accidental opening in water.

- ▶ Colours: Black, Blue, Red, White & Yellow
- ▶ Size: S/M, M/L & L/XL

Part No.	Detail	THB
B5002-04	GP100 Fin	4,395



F100 PRO FINS - FULL FOOT

HIGH-PERFORMANCE TECHNOPOLYMER MATERIAL

- ▶ Stabilizers reducing slicing and power loss to a minimum
- ▶ Water channels guaranteeing optimal thrust without excessive force
- ▶ No-slip foot pocket
- ▶ Colours: Black, Blue, Pink, Red & Yellow
- ▶ Size: 36/37, 38/39, 40/41, 42/43, 44/45, 46/47

Part No.	Detail	THB
B9290-5	F100 Pro Fin	2,110



PROPULSION FINS - OPEN HEEL

Lightweight, comfortable, easy fit & excellent thrust power: these are the special features of PROPULSION, the new generation open-heel fin.

- ▶ Colours: Blue, Clear, Pink, Red & Yellow
- ▶ Size: S-M, M-L, L-XL

Part No.	Detail	THB
B538-B540	Propulsion Fin	3,555





FUGA FULL FOOT FIN - FULL FOOT

- ▶ Shoe Material: Thermoplastic rubber
- ▶ Full foot diving & snorkeling fin
- ▶ Colours: Black, Blue, Pink, Red & Yellow
- ▶ Sizes: 36/37, 38/39, 40/41, 42/43, 44/45, 46/47

Part No.	Detail	THB
B9260-B9265	Fuga Full Foot Fin	1,660



RAINBOW FINN - FULL FOOT

- ▶ Full foot fin
- ▶ The combination of 3 materials offers excellent elasticity & performance
- ▶ Foot pocket in soft thermoplastic rubber
- ▶ Colours: Blue & Yellow

Part No.	Detail	THB
B9223-25	Rainbow Fin 36-41	1,030
B9226-28	Rainbow Fin 42-47	1,160



SPEED FINN - FULL FOOT

- ▶ Full foot diving & snorkelling fin
- ▶ Ideal for both adults & children
- ▶ The combination of 3 materials offers both excellent elasticity & performance
- ▶ Foot pocket in soft thermoplastic rubber
- ▶ Colours: Blue & Yellow
- ▶ Sizes: 26/27, 28/29, 30/31, 32/33, 34/35, 36/37, 38/39, 40/41, 42/43 & 44/45

Part No.	Detail	THB
B51	Speed Fin, size 26-35	910
B51	Speed Fin, size 36-41	1,145
B51	Speed Fin, size 42-45	1,290



SPRINT FINN - ADJUSTABLE

- ▶ Adjustable open heel snorkelling fin
- ▶ Ideal for both adults & children
- ▶ Foot pocket in soft thermoplastic rubber
- ▶ Colours: Blue & Yellow
- ▶ Sizes: 32/35, 36/38, 39/41, 42/44 & 45/47

Part No.	Detail	THB
B111000-4	Sprint Fin	1,375

DELTA CLUB BOOTS - SCUBAPRO

Part No.	Detail	THB
X57136	5mm Size XXXS - XXXL	2,460

DELTA SHORT BOOTS - SCUBAPRO

Part No.	Detail	THB
X57165	3mm Size XXXS - XXL	1,500
X57164	5mm Size XXXS - XXL	1,670

BASIC HD BOOTS - SEAC

Part No.	Detail	THB
B67900	5mm Size XXS - XXL	2,295

HIGH BOOTS w.ORANGE INSERT - DEEP BLUE

Part No.	Detail	THB
DBB01B	5mm Size XXS - XXL	1,290

HIGH BOOTS - DEEP BLUE

Part No.	Detail	THB
DBB01	5mm Size XXS - XXL	1,250

HALF BOOTS w. PULL CORD - DEEP BLUE

Part No.	Detail	THB
DBB02A	5mm Size XXXS - XXL	950

COMFORT ZIP BOOTS - SUBGEAR

Part No.	Detail	THB
G857.015	5mm XS - XXL	1,615

WAIKIKI BEACH WALKER - SUBGEAR

Part No.	Detail	THB
G857.181	Size 30 - 43	505

ONE SHOE w. WHITE TOE - POSEIDON

Part No.	Detail	THB
E0251	2mm Size 36 - 47	3,740

KAILUA BEACH WALKER - SUBGEAR

Part No.	Detail	THB
G857.182	Size 30 - 46	635


Delta Club

Delta Short

Basic HD

Hight Boot

Heavy Duty Sole

Half Boot

Comfort Zip

Waikiki Beach Walker

One Shoe

Kailua Beach Walker
BOOT SIZE CHART

Size	3XS	2XS	XS	S	M	ML	L	XL	2XL	3XL
Deep Blue	4	5	6	7	8	9	10	11	12	n/a
Scubapro	5	5.5	6	7	8	8.5	9	10	11	11.5
Seac	n/a	23 / 36-37	24 / 37-38	25 / 38-39	26 / 40-41	n/a	27 / 42-43	28 / 43-44	29 / 45-46	n/a



Tropic Glove



Tropic Pro



Tropic Amara Sport



Tropic Glove



Superstretch



Tropic HD



Stretch D-Flex



Flexi Glove



Neoprene Sock

TROPIC GLOVE - SCUBAPRO

Part No.	Detail	THB
X58325	1.5mm Size XXS - XXL	1,730

TROPIC PRO GLOVE - SCUBAPRO

Part No.	Detail	THB
X58161	1.5mm Size XXS - XXL	1,600

TROPICAMARAGLOVE(BLUE)-SCUBAPRO

Part No.	Detail	THB
X58142	1.5mm Size XXS - XXL, Blue	1,210

TROPIC GLOVE - DEEP BLUE

Part No.	Detail	THB
DBG01	1.5mm Size XS - XL	590

SUPERSTRETCH GLOVE - DEEP BLUE

Part No.	Detail	THB
DBG02	2.5mm XS/S, M/L, XL/XXL	490

TROPIC HD GLOVE - SEAC

Part No.	Detail	THB
B64600	1.5mm Size XS - XL	1,010

STRETCH D-FLEX GLOVE - SUBGEAR

Part No.	Detail	THB
G0858.064	2mm Size XXS - XXL	1,080

FLEXI GLOVE - POSEIDON

Part No.	Detail	THB
E0250	3mm Size XS - XL	1,204

NEOPRENE SOCK - DEEP BLUE

Part No.	Detail	THB
DBB03	2mm Size XXS - XXL	460

SIZE CHART : DEEP BLUE SHORTY DBADS01

Position	XS	S	M	L	XL	XXL	XXXL
Chest	84	88	92	96	100	104	108
Waist width	70	74	78	82	86	90	94
Hip width	85	89	93	97	101	105	109
Length of neck to crotch	68	70	72	74	76	78	80
Neck circumference	35	36	37	38	39	40	41

SIZE CHART : DEEP BLUE SHORTY DBADS02

Position	XXS	XS	S	M	L	XL	XXL
Chest	84	90	92	94	96	98	102
Waist width	72	47	76	80	86	90	94
Hip width	84	88	92	94	100	102	106
Length of neck to crotch	62	64	66	68	70	72	74
Neck circumference	33	34	35	36	38	39	40

UNISEX SHORTY DEEP BLUE

- ▶ Add your own logo on chest
- ▶ 3mm shorty / Black - Blue
- ▶ Standard neoprene
- ▶ Back zipper, YKK
- ▶ Rolled seams on edges
- ▶ Flat comfortable seams
- ▶ Sizes: XXS-4XL
- ▶ Size indication on zipper band

Part No.	Detail	THB
DBADS02	Shorty Deep Blue 3mm Rental	2,200


UNISEX SHORTY DEEP BLUE

- ▶ Add your own logo on chest
- ▶ 3mm shorty / Black
- ▶ Quality CR neoprene (CR = Chloroprene Rubber)
- ▶ Back zipper, YKK
- ▶ Rolled seams on edges
- ▶ Flat comfortable seams
- ▶ Sizes: XXS-XXXL
- ▶ Size indication on zipper band

Part No.	Detail	THB
DBADS01	Unisex Shorty 3mm Rental	2,700



* CR = Chloroprene Rubber



UNISEX STEAMER 3mm

- ▶ 3mm durable neoprene
- ▶ Rolled seams on edges
- ▶ Flat comfortable seams
- ▶ Sizes: XS-XXXL
- ▶ Back zipper with size indication on zipper band
- ▶ Wrist & ankle zipper

Part No.	Detail	THB
DBADS03	Unisex Steamer 3mm	3,490



LYCRA RASHGUARD

- ▶ The optimal body wear for water sports or any outdoor activities
- ▶ Light weight & instant drying
- ▶ Tie down loop for surfers
- ▶ Sizes: XXS-XXL
- ▶ Colours: Red / Black, Black / Blue, Black / Grey & Black

Part No.	Detail	THB
DBLR1	Lycra Rashguard	1,090



EVERFLEX STEAMER

- ▶ 100% EverFlex material using multi-thickness panels for superior combination of warmth and flexibility
- ▶ Advanced formula Tatex kneepads
- ▶ Compression molded combination zipper flap/spine pad.

MEN'S

Part No.	Detail	THB
X63306	3/2mm Black/Grey (XS - XXL)	12,990

WOMEN'S

Part No.	Detail	THB
X63356	3/2mm Black/Red (XXS - L)	12,990



THERMAL TEC STEAMER

The Thermal TEC is a perfect combination of advanced materials & their masterful arrangement, creating a suit of outstanding durability, comfort & insulation. Main suit sections are made of durable & fast drying N2S neoprene. Wrist & ankle zippers for divers ease of wear.

MEN'S

Part No.	Detail	THB
X64468	3mm (XS - XXL)	11,020
X64465	5mm (XS - XXL)	13,130

WOMEN'S

Part No.	Detail	THB
X64469	3mm (XS - XL)	11,020
X64464	5mm (XS - XL)	13,130





ARRIVE 2014



PROFILE

- ▶ 0.5 mm nylon neoprene outside for durability and Silverskin inside for easy wear. Silverskin is an ultra-smooth interior finish. It consists of a cell finish with 'metalite' coating for extra warmth retention. It dries fast and seals extremely well.
- ▶ Non-chaffing flat seams for insured comfort directly against your skin. Flat seam construction is a stitching pattern that provides comfort, strength and flexibility on warm water suits.
- ▶ Thumb and foot straps, for added convenience.
- ▶ Back zipper for great ergonomic look and fit

MEN'S

Part No.	Detail	THB
X63037	0.5mm Black (XS - XL)	4,955



PROFILE STEAMER

An ultra thin neoprene steamer, extremely comfortable as a tropical water suit or as an extra layer under your standard suit.

MEN'S

Part No.	Detail	THB
X63276	3mm (S - XXXL)	8,635
X63336	0.5mm (S - XXXL)	5,545

WOMEN'S

Part No.	Detail	THB
X63277	3mm (XXS - XL)	8,635
X63346	0.5mm (XXS - XL)	5,545



PROFILE SHORTY

- ▶ Profile Shorty with 2.5mm neoprene and improved ergonomic cut and back zipper for a great fit.
- ▶ Durable and fast drying N2S neoprene
- ▶ Back zipper
- ▶ Comfortable raw cut collar neck line
- ▶ Flatseam construction for no chafing wear
- ▶ Improved cut

MEN'S

Part No.	Detail	THB
X63240	2.5mm (S - XXXL)	4,460

WOMEN'S

Part No.	Detail	THB
X63241	2.5mm (XS - XL)	4,600

HOODED VEST

Designed to layer with scubapro steamers for extra warmth over the torso. 2.5mm neoprene on front & back sections & hood, with glideskin interior & 0.5mm ultra-stretch side panels.

MEN'S

Part No.	Detail	THB
X64061	XXS - XXXL	3,050



HYBRID SHORTS

The newest addition to the hybrid line, the hybrid shorts can be worn alone, under a suit, or paired with hybrid T-Flex rash guard for a great warm water combo.

MEN'S

Part No.	Detail	THB
X63056	S - XXL	1,990



HYBRID SHORTS w. CARGO POCKETS

- ▶ A unique concept to be worn over all types of suits, adding two extra pockets for total convenience.
- ▶ Constructed in 1mm Flextec material with drawstring waist and reinforced seat for durable wear.

Part No.	Detail	THB
X63170	S - XXL	3,280



HOOD FUSION

Part No.	Detail	THB
X67.030	6/3mm, Size S, M only	1,425



HOOD EVERFLEX

Part No.	Detail	THB
X67.242	5/3mm, Size S - XL	1,920





ARRIVE
JAN 2014



LOOSE FIT

- ▶ For use as a thermal layer and/or UV and rash protection 50+ SPF- Protects you from sun rays
- ▶ Smooth on your skin
- ▶ Lightweight and durable
- ▶ Can be worn by itself in warm water or under a wetsuit for added warmth
- ▶ Water repellent fabric

Part No.	Detail	THB
X63202	XS-XL	2,105



T-FLEX LONG SLEEVE

- ▶ New material
- ▶ Higher lycra %
- ▶ Higher thermal protection
- ▶ Higher UV rating

For MEN:

Part No.	Detail	THB
X63168	Orange / Black, XS - XXL	1,840
X63171	Yellow / Black, XS - XXL	1,840
X63179	Black / Grey, XS - XXL	1,840
X63187	White / Grey, XS - XXL	1,840

For WOMEN:

Part No.	Detail	THB
X63169	Orange / White, XS - XL	1,840
X63172	Yellow / White, XS - XL	1,840
X63180	Black / Blue, XS - XL	1,840
X63188	White / Blue, XS - XL	1,840



ARRIVE 2014 "NO PICTURE"



For MEN:

Part No.	Detail	THB
X63283	T-Flex LS Men Black	1,945

For WOMEN:

Part No.	Detail	THB
X63264	T-Flex LS Lady Black	1,945
X63280	T-Flex LS Lady Blue/White	1,945



T-FLEX SHORT SLEEVE

- ▶ The optimal body wear for water sports or any outdoor activities
- ▶ Light weight & instant drying
- ▶ Colours: Red / Black

Part No.	Detail	THB
X63141	XS-XL	1,525



MICROFIBER TOWEL

Colour: Grey

Part No.	Detail	THB
X50.582.000	Microfiber Towel	1,735



SCUBAPRO T-SHIRT

- ▶ 190g cotton.
- ▶ Scubapro logo on chest
- ▶ Professional Diving Equipment Logo on back.

Part No.	Detail	THB
X001.32-50	Unisex, 4S - XXXL	295



SUB GEAR

DRAGON LONG SLEEVE

- ▶ Rashguard (Lycra Shirt) w. long sleeves
- ▶ Super stretch material (88% nylon, 12 Spandex)
- ▶ Ideal for a tropical environment + SPF 80 sun UV protection
- ▶ Unisex for Men & Woman
- ▶ Available sizes: S-M-L-XL-XXL

Part No.	Detail	THB
G863.011	Unisex, S - XXL	1,485





WHITE OCEAN LADIES SHORT SLEEVE

- ▶ Rashguard (Lycra Shirt) w. long sleeves
- ▶ Super stretch material (88% nylon, 12 Spandex)
- ▶ Ideal for a tropical environment + SPF 80 sun UV protection
- ▶ Unisex for Men & Woman
- ▶ Available sizes: XS-S-M-L-XL

Part No.	Detail	THB
G863.015	Ladies, XS - XL	1,485



GRAY CAYO LONG SLEEVE

- ▶ Rashguard (Lycra Shirt) w. long sleeves
- ▶ Super stretch material (88% nylon, 12 Spandex)
- ▶ Ideal for a tropical environment + SPF 80 sun UV protection
- ▶ Unisex for Men & Woman
- ▶ Available sizes: S-M-L-XL-XXL

Part No.	Detail	THB
G863.013	Unisex, S - XXL	1,485



BLACK CORAL SHORT SLEEVE

- ▶ Rashguard (Lycra Shirt) w. short sleeves
- ▶ Super stretch material (88% nylon, 12 Spandex)
- ▶ Ideal for a tropical environment + SPF 80 sun UV protection
- ▶ Unisex for Men & Woman
- ▶ Available sizes: S-M-L-XL-XXL

Part No.	Detail	THB
G863.024	Unisex, S - XXL	1,385



DAEMON SHORT SLEEVE

- ▶ Rashguard (Lycra Shirt) w. short sleeves
- ▶ Super stretch material (88% nylon, 12 Spandex)
- ▶ Ideal for a tropical environment + SPF 80 sun UV protection
- ▶ Unisex for Men & Woman
- ▶ Available sizes: S-ML-L

Part No.	Detail	THB
G863.080	Unisex, Size S, ML, L	1,285

SPORT PRO WATERPROOF HD VIDEO SPORTS CAMERA

- ▶ Resolution: Video: 1080p HD, 720p HD, 480p
- ▶ Photo: 12MP, 8MP, 5MP, 3MP
- ▶ Waterproof to 200 ft / 60 m
- ▶ 1.5" TFT LCD Display
- ▶ Built in 32 MB flash memory
- ▶ Built in 1400 Mah rechargeable battery
- ▶ Supports micro SD Card up to 32 GB
- ▶ With TV / mini USB slots
- ▶ Video: 1080p HD, 720p HD, 480p
- ▶ Photo: 12MP, 8MP, 5MP, 3MP
- ▶ Digital zoom
- ▶ Dimensions: 7 x 8.4 x 6 cm / (2.8 x3.3 x 2.4) inch

Part No.	Detail	THB
MSSP1	Sport Pro HD Digital Camera	7,060



HELMET MOUNT

Part No.	Detail	THB
MSSP1-HELM	Helmet Mount	840

BAR / POLE MOUNT

Part No.	Detail	THB
MSSP1-HBM	Bar / Pole Mount	1,025

SUCTION CUP MOUNT

Part No.	Detail	THB
MSSP1-SCM	Suction Cup Mount	715

SURFBOARD MOUNT

Part No.	Detail	THB
MSSP1-SURF	Surfboard Mount	1,185

CHEST STRAP

Part No.	Detail	THB
MSSP1-CS	Chest Strap	1,025

INTOVA POD

Part No.	Detail	THB
MSSP1-INTPOD	Intova Pod	840

CAMERA HAND STRAP

Part No.	Detail	THB
MSSP1-CHS	Camera Hand Strap	720

RED FILTER FOR SPORT PRO1

Part No.	Detail	THB
MSSP1-IFRED	Red Filter for Sport Pro1	1,475



MSSP1-HELM



MSSP1-HBM



MSSP1-SCM



MSSP1-SURF



MSSP1-CS



MSSP1-INTPOD



MSSP1-CHS



MSSP1-IFRED



ARRIVE
JAN 2014



IC16 DIGITAL CAMERA w. UW HOUSING

- ▶ 16 megapixel CCD image sensor for high resolution photography
- ▶ 1/2000th second fast shutter speed and an enhanced Digital Signal Processor.
- ▶ 720p HD video resolution
- ▶ 5X Optical Zoom / 4x Digital Zoom
- ▶ Rechargeable via USB cable Lithium ion battery
- ▶ SDHC memory cards up to 32 GB (not included)
- ▶ Waterproof to 54 meters/180 feet
- ▶ Dual O-rings
- ▶ 52 mm lens barrel thread

Part No.	Detail	THB
MSSIC16	16MP Digital Camera & Housing	9,680



MSSIC14

IC14 CAMERA w. UW HOUSING

- ▶ 14 MP image sensor ideal for high resolution images
- ▶ Enhanced digital signal processor and HD video resolution. Up to 720p HD video resolution
- ▶ 5x Optical Zoom / 6x Digital nZoom
- ▶ Shutter speed: 2 - 1/2000 sec
- ▶ Rechargeable Li-ion battery (3.7V) (no need to remove for recharging via USB cable)
- ▶ 32MB internal memory
- ▶ Waterproof to 180 feet/54 meters
- ▶ Dual O-rings

Part No.	Detail	THB
MSSIC14	IC14 w. UW Housing	9,400



MSSIFRED52

COLOUR CORRECTION FILTER

Part No.	Detail	THB
MSSIFRED52	Intova Red Filter 52mm - IC14	1,790



MSSIC14BAT



MSSIFD-IC14

FLASH DIFUSER

Part No.	Detail	THB
MSSIFD-IC14	For IC14	385

BATTERY

Part No.	Detail	THB
MSSIC14BAT	For IC14	1,670



WIDE ANGLE LENS

Expand your photo taking possibilities with the new Intova wide angle lens that can be installed and removed underwater

- ▶ Thread mount: 67mm (46mm and 52mm with included thread mount adapters)
- ▶ Magnification: 0.65%
- ▶ View angle: 75 deg underwater / 87 deg above water
- ▶ Dimensions: (8.7 x 4)cm with adapter,
- ▶ Depth rating: 50m

Part No.	Detail	THB
MSSWALENS	Wide Angle Lens	8,900



STAY SLIM w. FLEX ARM

Intova stay slim with flex arm: Simple & universal, the SSFL kit consists of a base stay with standard tripod screw & a 30cm (11.8 inch) flex arm for mounting strobes or video lights to an underwater camera housing.

Part No.	Detail	THB
MSSFL	Stay Slim with Flex Arm	2,530

FIBER OPTIC CABLE

Easy velcro attachment for slave strobe activation. Particularly useful in ultra clear water where light from internal (on camera) flash can dissipate rapidly & not activate slave strobe.

Part No.	Detail	THB
MSSPX35	Fiber Optic Cable for ISS4000	885

SILICA GEL

Install with camera in the waterproof housing for prevention of condensation.

Part No.	Detail	THB
MSSIGEL	Silica Beads - 5 pack	345

CAMERA CARE KIT

Incl. silicone grease, silica gel packs, lens cleaner solution, lens cloth, o-ring removal tool, blower brush, grease applicators, & cleaning swabs.

Part No.	Detail	THB
MSSCCK	Camera Care Kit	655

TORCH ADAPER

Part No.	Detail	THB
MSSTA6	Torch Adapter	475

BATTERIES MSSIT123, MAA4, MAAA4

Part No.	Detail	THB
MSSIT123	CR123 Lithium Batteries	165
MAA4	Energizer MAX AA Battery (4Pack)	85
MAAA4	Energizer MAX AAA Battery (4Pack)	85



MSSPX35



MSSFL



MSSIGEL



MSSCCK



MSSTA6



MAAA4



MAA4



MSSIT123



SPORT 10K

- ▶ An affordable solution to Sports photography
- ▶ Housing waterproof to 40 meters / 140 feet
- ▶ Camera waterproof to 3 meters / 10 feet
- ▶ Shock absorbent liner
- ▶ 2 x AAA batteries provide easy power solutions anywhere in the world
- ▶ Memory is via Micro SD card up to 32GB
- ▶ Standard tripod mount compatible with all Intova mount systems

Part No.	Detail	THB
MSSP10K	10MP Compact Camera+Housing	4,280



SPORT FLASH CAMERA

- ▶ Built in flash
- ▶ Waterproof to 100 feet / 33 meters
- ▶ Camera is reusable
- ▶ Camlock clasp with hinged back
- ▶ 28mm focus free lens
- ▶ Preloaded with 27 exposure sports formula film
- ▶ Flip up sports viewfinder
- ▶ Pressure resistant shutter button
- ▶ Shock resistant, heavy duty housing that floats
- ▶ Hand strap included

Part No.	Detail	THB
MSS01	Sport Flash Camera	1,050



SPORT ALL WEATHER CAMERA

This inexpensive yet tough & durable waterproof model is designed for use in daylight conditions. Its compact size, rugged & waterproof design make it an ideal camera for snorkeling, skiing, fishing, boarding, surfing, etc .

Waterproof to 25 feet / 8 meter

Part No.	Detail	THB
MSS04	Sports All Weather Camera	505



MSS400K



MSS400F

FILM 400 ASA / 36 EXPOSURE

Part No.	Detail	THB
MSS400F	Fuji Film	320
MSS400K	Kodak Film	320

GEAR BAG

- ▶ Add your custom logo
- ▶ Oversize 90 litres bag & size 70 x 35 x 35cm
- ▶ Colours: Black, Blue & Red

Part No.	Detail	THB
DB8020	Gear Bag - 90L	943

GEAR BAG

- ▶ Add your custom logo
- ▶ Oversize 65 litres bag & size 70 x 30 x 30cm
- ▶ Colours: Black, Blue & Red

Part No.	Detail	THB
DB8010	Gear Bag - 65L	864

MESH GEAR BAG

- ▶ Lightweight & tough nylon mesh gear bag
- ▶ Length 63cm

Part No.	Detail	THB
DBBL3176	Mesh Gear Bag - 63cm	995

REGULATOR BAG

- ▶ Designed for optimum protection of your regulator,
- ▶ 8.5 litres capacity size 32 x 32cm

Part No.	Detail	THB
DB8001	Regulator Bag	718

SNORKELING BAG

- ▶ Lightweight & convenient for mask, snorkel & fins 75 x 25cm
- ▶ Colours: Black & Blue

Part No.	Detail	THB
DB8040	Snorkeling Bag	730

WATERPROOF POUCH

- ▶ Perfect to store your documents & course materials. Size: 38 x 30cm

Part No.	Detail	THB
DB8044	Waterproof Pouch	230
DB8044-C	Waterproof Pouch	230

MESH BAG

- ▶ Fits mask & snorkel 48 x 20cm with shoulder strap
- ▶ 48 x 20cm colours: Blue & Yellow
- ▶ Fits mask, snorkel & fins 70 x 30cm with shoulder strap
- ▶ 70 x 30cm colour: Blue

Part No.	Detail	THB
DB8065	Mesh Bag 48 x 20cm	124
DB8066	Mesh Bag 70 x 30cm	206



DB8020



DB8010



DBBL3176



DB8001

DB8040



DB8044



DB8065

DB8066



OCEAN PACK DRY BAG

The ORIGINAL and still the best dry bag. Heavy duty tarpaulin keeps your valuables dry in all environments.

Available colours:

5 Litres: Pink

5-15 Litres: Blue, Black Yellow, Red, Green & White

20 Litres: Blue, Black, Yellow, Red & Green

30-40 Litres: Blue, Black, Yellow & Red

Part No.	Detail	THB
DB8205	5 L Ocean Pack	440
DB8210	10 L Ocean Pack	520
DB8215	15 L Ocean Pack	690
DB8220	20 L Ocean Pack	750
DB8230	30 L Ocean Pack	890
DB8240	40 L Ocean Pack	990



EXTREME BAG

- ▶ EXTREME Dry Bags are suitable for any water sports and outdoor activities such as scuba diving, kayaking, hiking, hunting, rafting, boating and fishing.
- ▶ Made from extremely durable polyurethane, designed specifically for wet environments.
- ▶ 5-15 Litres colours: Blue, Black & Yellow

Part No.	Detail	THB
DB0005	5 L Extreme Bag	410
DB0010	10 L Extreme Bag	460
DB0015	15 L Extreme Bag	475



CLEAR WATERPROOF POUCH

Part No.	Detail	THB
S7114-S	Small 12 X 18cm	160
S7114-M	Medium 18 X 25cm	200
S7114-L	Large 25 X 33cm	275

DIVE'N ROLL BAG

- ▶ Virtually indestructible hard case body and detachable daypack. Use them independently or zipped together.
- ▶ Robust, abrasion resistant yet lightweight NT Fabric, Extremely resistant against salt water and traction.
- ▶ All main compartments feature double zipper sliders to enable the use of a locking system.
- ▶ All wheeler models are equipped with salt water resistant in-line wheels and stainless steel wheel shafts.
- ▶ Exclusive SCUBAPRO rubber ergonomic handles for comfort, complementing our unique modern bag design.
- ▶ Removable ID Card Holder for quick bag identification
- ▶ Dimensions: 72 x 46 x 44cm, Weight: 7.3kg

Part No.	Detail	THB
X53.360.120	Dive'n Roll Bag	10,845

CARAVAN BAG

- ▶ Robust abrasion resistant yet lightweight Nylon NT
- ▶ YKK salt water resistant double slider zippers
- ▶ Main compartment features top U shape opening with double zipper sliders for full access to contents and locking system use
- ▶ Flat pockets for documents, flying ticket on both sides
- ▶ External compression straps
- ▶ Retractable double bar trolley handle incorporating reinforced salt water resistant in-line skate wheels for easy wheeling.
- ▶ Dimensions: 70 x 40 x 35cm, Weight: 5kg

Part No.	Detail	THB
X53.350.120	Caravan Bag	8,260

MESH SACK

- ▶ Robust net material
- ▶ Top rope plus spring button closure
- ▶ Foldable into its own front pocket
- ▶ Shoulder straps give flexible toting options
- ▶ Dimensions: 70 x 35 cm (diameter), Weight: 0.67kg

Part No.	Detail	THB
X53.370.220	Mesh Sack	1,895

BACKPACK - BLACK

- ▶ Compact and lightweight backpack for travelling
- ▶ Integrated rain cover
- ▶ Computer and mobile phone pocket inside
- ▶ Side mesh pouch for water bottle storage

Part No.	Detail	THB
X53.295.510	Backpack Black	3,090

JUMBO BAG

- ▶ Robust abrasion resistant yet lightweight Nylon NT
- ▶ YKK salt water resistant double slider zippers
- ▶ Main compartment features top U shape opening with double zipper sliders for full access to contents and locking
- ▶ 2 side flat pockets for documents, flying ticket
- ▶ Side and top carry handles give you flexible toting options
- ▶ Extra shoulder straps for maximum carrying convenience

Part No.	Detail	THB
X53.340.720	Jumbo Bag	3,005



X53.360.120



X53.350.120



X53.370.220



X53.295.510



X53.340.720



X53.380.720



X53.365.120



X53.951.100



X53.120.120

TECH BAG

- ▶ 100% heavy duty TPE Tarpaulin material
- ▶ YKK salt water resistant double slider U shape cover opening
- ▶ Main compartment internal Velcro straps to attach regulator hoses
- ▶ Clear zippered front cover pocket for logbook or any document you wish to protect
- ▶ Padded carry handle
- ▶ Dimensions: 32 x 27 x 13cm, Weight: 0.5kg

Part No.	Detail	THB
X53.380.720	Tech Bag	1,385

CABIN BAG

- ▶ 100% heavy duty TPE Tarpaulin material
- ▶ Easy access through U shape double slider coil zipper opening
- ▶ Main compartment w. elastic straps to maintain your clothes
- ▶ Cover with inside zippered mesh pocket for shirts etc.
- ▶ Front cover horizontal zipper passport/flying ticket pocket
- ▶ Retractable double bar trolley handle incorporating reinforced in-line skate wheels for easy wheeling.
- ▶ Side and top carry handles give you flexible toting options
- ▶ Dimensions: 50 x 35 x 20cm, Weight: 2.4kg

Part No.	Detail	THB
X53.365.120	Cabin Bag	4,715

BUSINESS INSTRUCTOR BAG

- ▶ Computer briefcase style with interior protective padding.
- ▶ Numerous convenient compartments and pockets
- ▶ Padded removable shoulder strap

Part No.	Detail	THB
X53.951.100	Business Instructor Bag	3,090

DRY BAG w. SHOULDER STRAP

Part No.	Detail	THB
X53.031.200	Dry Bag Small - White	1,385
X53.032.200	Dry Bag Small - Blue	1,385
X53.035.200	Dry Bag Small - Yellow	1,385
X53.037.200	Dry Bag Small - Pink	1,385
X53.031.300	Dry Bag Medium - White	1,725
X53.032.300	Dry Bag Medium - Blue	1,725
X53.035.300	Dry Bag Medium - Yellow	1,725
X53.037.300	Dry Bag Medium - Pink	1,725

MESH BAG

- ▶ Robust net material
- ▶ YKK salt water resistant double slider zippers plus spring button closure
- ▶ Foldable into its own side pocket for easy and convenient storage when not used
- ▶ Dimensions: 68 x 38 x 33cm, Weight: 0.75kg

Part No.	Detail	THB
X53.120.120	Mesh bag	2,235

WATERPROOF DRY DUFFEL BAG

- ▶ This 50L waterproof dry duffel is the perfect size for clothing and towels
- ▶ Heavy duty double coated Rip-stop Nylon and heat taped seams
- ▶ Dual compression strap system for securing loads
- ▶ Large web handles and shoulder straps for comfortable carrying
- ▶ 2 outside zippered pockets for small quick access items
- ▶ For extreme water protection and easy transportatio

Part No.	Detail	THB
G853.100.600	Waterproof Dry Duffel Bag - 50L	2,850



REGULATOR BAG

- ▶ Internal Strap to hold regulator
- ▶ Logbook clear pocket
- ▶ Dive computer bag included
- ▶ Dimensions: 35 x 26 x 10cm
- ▶ Weight: 0.4k

Part No.	Detail	THB
G853.309.012	Regulator & Computer Bag - 9L	1,230



COMPRESSION BAG

- ▶ Available in 10L sizes, these versatile compression dry bags have a clear panel and drain.

Part No.	Detail	THB
G853.100.710	Compression Bag w. transparent Pnel - 10L	1,025





B3801



B3802



B3702



B3803



B3804

MATE 550 HD

- ▶ Material: 600D polyester with coating in PVC
- ▶ 2 side fin pockets with drainage
- ▶ Two front pockets
- ▶ Retractable handle with lock
- ▶ PVC wheels w/rubber encased bearings
- ▶ Rear shoulder straps
- ▶ Size: 82 x 47 x 30 cm

Part No.	Detail	THB
B3801	Mate 550 HD - 116 litres	11,530

MATE FLIGHT HD

- ▶ Material: 600D polyester with coating in PVC
- ▶ 2 side fin pockets with drainage
- ▶ One front pocket
- ▶ Retractable handle with lock
- ▶ PVC wheels w/rubber encased bearings
- ▶ Size: 77 x 47 x 35 cm

Part No.	Detail	THB
B3802	Mate Flight HD - 126 litres	7,120

MATE 500 BAG

- ▶ Made of 1680 denier nylon bonded with PVC
- ▶ 2 side fin pockets
- ▶ PVC wheels w/rubber encased bearings
- ▶ Retractable handle with lock
- ▶ 2 padded foldaway adjustable straps
- ▶ Size: 75 x 25 x 39cm

Part No.	Detail	THB
B3702	Mate 500 Bag - 73 litres	5,328

MATE 300 HD

- ▶ Shoulder bag, sturdy and functional
- ▶ Material: 600D polyester with coating in PVC
- ▶ Equipped with two roomy side pockets
- ▶ Size: 78 x 34 x 28 cm

Part No.	Detail	THB
B3803	Mate 300 HD - 74 litres	2,840

MATE 200 HD

- ▶ High-capacity shoulder bag
- ▶ Material: 600D polyester with coating in PVC
- ▶ Roomy side pocket with drainage net
- ▶ Size: 80 x 35 x 40 cm

Part No.	Detail	THB
B3804	Mate 200 HD - 110 litres	2,420

PELICAN MICRO CASE

Part No.	Detail	THB
N1010	11.2 x 7.4 x 4.2cm	966
N1020	13.6 x 9.2 x 4.2cm	1,270
N1030	16.5 x 7 x 5.2cm	1,322
N1040	16.6 x 10 x 4.4cm	1,424
N1050	16.6 x 10 x 6.9cm	1,508
N1060	21.4 X 11.2 X 5.7cm	1,814

GUARD BOX

Colours: Blue, Black, Orange, Yellow, Silver, Tan & (OD green)

Part No.	Detail	THB
N1120	21 x 16.5 x 9cm	2,235

CASE "1150"

Colours: Blue, Black, Orange, Yellow, Silver, Tan & (OD green)

Part No.	Detail	THB
N1150	23.5 x 20 x 11.5cm	2,595

CASE "1200"

Colours: Black, Orange, Yellow, Silver, Tan & (OD green)

Part No.	Detail	THB
N1200	27 x 25 x 12.5cm	3,590

CASE "1300"

Colours: Black, Orange, Yellow, Silver, Tan & (OD green)

Part No.	Detail	THB
N1300	27 x 25 x 18cm	4,310

CASE "1400"

Colours: Black, Orange, Yellow, Silver, Tan & (OD green)

Part No.	Detail	THB
N1400	33 x 30 x 15cm	6,620

CASE "1450"

Colours: Black, Orange, Yellow, Silver, Tan & (OD green)

Part No.	Detail	THB
N1450	40 x 33 x 18cm	8,415

COMPUTER CASE

- Fits computer up to 44 x 28 x 8cm
- Colours: Black & Tan

Part No.	Detail	THB
N1490CC#2	48 x 35 x 12cm	14,525

CASE "1500"

Colours: Black, Yellow, Silver, Orange, Tan & (OD green)

Part No.	Detail	THB
N1500	47 x 39 x 17.5cm	9,805



N1010 - N1060



N1120



N1150



N1200



N1300



N1400



N1450



N1490CC#2



N1500



N1510



N1520



N1550



N1600



N1610



N1620



N1650



N1660



N1750



N1506TSA

CASE "1510"

- ▶ Retractable extension handle
- ▶ Colours: Black, Tan & (OD green)

Part No.	Detail	THB
N1510	50.1 x 27.9 x 19.3cm	13,960

CASE "1520"

Colours: Black, Yellow, Silver, Orange, Tan & (OD green)

Part No.	Detail	THB
N1520	49 x 39.5 x 19cm	10,725

CASE "1550"

Colours: Black, Yellow, Silver, Orange, Tan & (OD green)

Part No.	Detail	THB
N1550	52 x 42.5 x 21.5cm	12,110

CASE "1560"

Colours: Black, Yellow, Silver, Orange, Tan & (OD green)

Part No.	Detail	THB
N1560	55 x 45 x 26cm	14,500

CASE "1600" ***

Colours: Black, Silver, Orange, Yellow, Tan & (OD Green) w. retractable extension handle

Part No.	Detail	THB
N1600	59 x 53 x 23cm	14,320

CASE "1610" ***

Colours: Black, Tan & (OD Green) w. retractable extension handle

Part No.	Detail	THB
N1610	40 x 62 x 49cm	18,525

CASE "1620" ***

Colours: Black, Tan & (OD Green)

Part No.	Detail	THB
N1620	62 x 49 x 35cm	20,170

CASE "1650" ***

Colours: Black, Tan & (OD Green)

Part No.	Detail	THB
N1650	80 x 53 x 29cm	20,940

CASE "1660" ***

Colours: Black, Tan & (OD Green)

Part No.	Detail	THB
N1660	80 x 58 x 48cm	27,660

LONG CASE "1750"

Colours: Black, Tan & (OD Green)

Part No.	Detail	THB
N1750	128.2 x 34.3 x 13.3cm	20,245

CABLE PADLOCK

Fits all Pelican Cases

Part No.	Detail	THB
N1506TSA	Cable Padlock	745

*** All 1600 Cases with heavy duty wheels
 ** OD Green available upon request

STUBBIE LED, 550 LUMENS

- ▶ Aviation aluminum body
- ▶ Aluminium reflector
- ▶ Tempered glass
- ▶ CRE LED 550 Lumens
- ▶ Waterproof to 150m (500')

Part No.	Detail	THB
DBBRDIV03	Stubbie LED	3,990



LANCE LED, 550 LUMENS

- ▶ Aviation aluminum body
- ▶ ABS plastic coating
- ▶ Aluminium reflector
- ▶ Tempered glass
- ▶ CRE LED 550 Lumens
- ▶ Waterproof to 60m (200')

Part No.	Detail	THB
DBBRDIV02	Lance LED	2,720



AQUA-LUMEN LED 5W, 230 LUMENS up to 50Hrs BURN TIME

- ▶ Lamp Life: 50,000hrs
- ▶ Water Proof: 120m (400 Feet)
- ▶ Size: 38 x 158 m/m. Weight: 230g with 3 batteries
- ▶ Battery: 3 x C alkaline.
- ▶ Wrist Strap Lanyard: PU coiling lanyard Included

Part No.	Detail	THB
U3250LED	Aqua-Lumen LED 5W	4,400



AQUASTAR LED TORCH, 160 LUMENS

- ▶ 3 LED flashlight is a high intensity flashlight with an incredibly long burn time
- ▶ The rugged military style casing makes this flashlight as tough as it looks
- ▶ The electronics include a constant current control circuitry that maintains the LED's brightness output throughout the entire life of the battery
- ▶ Uses 6 x AAA sized batteries

Part No.	Detail	THB
U2640LED	Aquastar LED Torch	3,185



AQUA-NO.1 LED HEADLIGHT

- ▶ Clip on Mask strap, or your Pockets
- ▶ Aluminium with anodized and sandblasted in black
- ▶ Length: 10 cm
- ▶ Waterproof to 120m (400')
- ▶ 3 hour burn time (at full power)
- ▶ Lanyard, 1 x AAA Alkaline Battery & Mask strap clip included

Part No.	Detail	THB
U1700LED	Aqua-No.1 LED 5W	1,045





MEGANOVA VIDEO / FLASH LIGHT, 2000 LUMENS

- ▶ 2000 Lumens & LED lifetime is 100,000hrs
- ▶ Li-ion rechargeable battery
- ▶ 2 hour burn time at full power
- ▶ magnetic push switch for variable power control:
Full / 30% / strobe
- ▶ 55 degree beam angle
- ▶ waterproof to 400 ft/122m & weight 1.4kg

Part No.	Detail	THB
MSSIMN6000	Meganova	17,895



GALAXY VIDEO/FLASHLIGHT, 2500 LUMENS

- ▶ Waterproof to 120m (400')
- ▶ 140 degree wide angle beam
- ▶ Removable rechargeable Li-ion battery providing 1hr burn time
- ▶ Video mount adapter (Y clamp) for attaching to standard flex arm.
- ▶ Light intensity adjustable from low, medium to full power with rotating magnetic switch.
- ▶ Anodized aluminium construction.

Part No.	Detail	THB
MSSGVL	Galaxy Video/Flashlight	18,300



SUPERNOVA VIDEO / FLASH LIGHT, 1000 LUMENS

- ▶ Waterproof to 120m (400')
- ▶ 1000 lumens at full power / 350 lumens at 30% power.
- ▶ LED lifetime: 35,000 hours.
- ▶ Beam angle: approximately 40 degrees.
- ▶ Light: round dispersive light.
- ▶ Switch: magnetic push.
- ▶ Burn time: approximately 2 hours at full power; more than 4 hours at 30% power

Part No.	Detail	THB
MSSISN1K	Supernova Plus	16,650



SEARCH LIGHT, 800 LUMENS

- ▶ LED lifetime – 100,000 hours
- ▶ 7 hour burn time (at full power)
- ▶ Magnetic tail switch for variable power control
- ▶ Waterproof to 120m (400')
- ▶ Aluminum body
- ▶ Dimensions 28 x 5.8 cm & weight 411g (with batteries)

Part No.	Detail	THB
MSSSL1	Search Light	5,965



MINI VIDEO / FLASH LIGHT, 300 LUMENS

- ▶ Battery: 2 x CR123
- ▶ Burn Time: 10hrs
- ▶ Variable Power: Full / 30% / strobe
- ▶ Switch: Magnetic / tail
- ▶ Material: Aluminium
- ▶ Depth: 400ft / 120m

Part No.	Detail	THB
MSSIMINI	Mini Torch	3,010



TACTICAL TORCH, 220 LUMENS

- ▶ Battery Two CR123 (included) & 10hrs Burn time
- ▶ Variable power: full / 30% / strobe
- ▶ Aluminum material & magnetic tail switch
- ▶ Waterproof to 400ft/122m
- ▶ Beam angle: 43 degrees
- ▶ Dimensions: 15.3 x 3.7cm & Weight 190g

Part No.	Detail	THB
MSSITAC	Tactical Light	3,245



WIDE ANGLE ZOOM VIDEO / FLASH LIGHT, 220 LUMENS

- ▶ LED lifetime: 100,000 hours
- ▶ Burn time: 8 hours
- ▶ Variable power: full/30%/strobe
- ▶ Aluminium body w. magnetic switch
- ▶ Waterproof to 120m (400')

Part No.	Detail	THB
MSSIFL-WAZOOM	Wide Angle Zoom	3,540



ULTRA TORCH, 220 LUMENS

- ▶ Battery: 6 x AA (not included)
- ▶ Burn time: 7hrs
- ▶ Variable power: full / 30% / strobe
- ▶ Aluminium body w. magnetic tail switch
- ▶ Depth rating: 400 feet / 122 meter
- ▶ Beam angle: 14 degrees
- ▶ Dimensions: 20 x 4.8cm

Part No.	Detail	THB
MSSULTRA	Ultra Nova	3,530



COMPACT TORCH, 230 LUMENS

- ▶ Battery: 3 x AAA
- ▶ Burn Time: 6hrs
- ▶ Variable Power: Full / 30% / strobe
- ▶ Aluminium body with magnetic switch
- ▶ Depth: 400ft / 120m

Part No.	Detail	THB
MSSICOM	Compact Torch	2,240



H2O MAN TORCH 5 LED (1W), 25 LUMENS

- ▶ 6 hour burn time
- ▶ Waterproof to 100 feet (30m)
- ▶ 4 x AAA batteries (not included)

Part No.	Detail	THB
MSSTORCH-HL1	Snapsight H2O Man Torch	375



STROBE LIGHT

- ▶ Use 1 x C-Cell battery (not included)
- ▶ Waterproof to 40m

Part No.	Detail	THB
TDL05	Strobe Light	2,200





X32023
Stainless Steel

X32022
Titanium



X32002



X32065



S3008T



S3008

MAKO KNIFE - TITANIUM / STAINLESS

- ▶ Features a conventional edge, line cutting notch, serrated edge for rope cutting, bottle opener and a QR sheath with locking mechanism
- ▶ Titanium: extreme resistance to corrosion with durable edge
- ▶ Stainless Steel: excellent cutting edge & high resistance to rust

Part No.	Detail	THB
X32022	Mako Knife - Titanium 8.5cm	4,355
X32023	Mako Knife - Stainless Steel 8.5cm	2,610

WHITETIP BCD KNIFE

- ▶ Features a conventional edge, line cutting notch, serrated edge for rope cutting and a QR sheath with locking mechanism
- ▶ Includes BC Hose mount attachment Kit

Part No.	Detail	THB
X32002	Whitetip Knife 6.5cm	2,320

MESH CUTTER

- ▶ Includes polyester protective sheath

Part No.	Detail	THB
X32065	Mesh Cutter 12.5cm	2,890



FOLDING KNIFE - TITANIUM / STAINLESS

- ▶ Titanium: extreme resistance to corrosion with durable edge
- ▶ Stainless Steel: excellent cutting edge & high resistance to rust

Part No.	Detail	THB
S3008T	Titanium Folding Knife 10cm	2,110
S3008	Stainless Folding Knife 10cm	780

TITANIUM / STAINLESS DIVE KNIFE
Titanium:

- ▶ Extreme resistance to corrosion with durable edge
- ▶ Black only

Stainless Steel:

- ▶ Excellent cutting edge & high resistance to rust
- ▶ Black or Fluoro Yellow

Part No.	Detail	THB
S3006T	Titanium Knife 13.8cm	3,590
S3006	Stainless Steel Knife 13.8cm	1,520


S3006T

S3006
TITANIUM / STAINLESS DIVE KNIFE
Titanium:

- ▶ Extreme resistance to corrosion with durable edge
- ▶ Black only

Stainless Steel:

- ▶ Excellent cutting edge & high resistance to rust
- ▶ Black or Grey or Fluoro Yellow

Part No.	Detail	THB
S3113T	Titanium Knife 11.4cm	3,840
S3113	Stainless Steel Knife 11.4cm	1,755


S3113T

S3113
STAINLESS DIVE KNIFE

- ▶ Mount to belt, BCD strap or BCD pocket
- ▶ Sharp tip with serrated edge plus line cutter
- ▶ Colours: Black, Blue, Yellow, Green & Clear

Part No.	Detail	THB
S3007	Stainless Steel Knife 8cm	765


B K C Y G
SEA SNIP

Cuts through line, net, rope, kelp & thin steel cable. New connector on the sheath allows for mounting on BCD, belt or leg.

Part No.	Detail	THB
SAS11N	Sea Snip	530


SAS11N
NYLON SHEATH

- ▶ For knife S3008 with d-ring & connectors for mounting on BC or belt
- ▶ 6.2 x 13.8cm

Part No.	Detail	THB
SAH12	Nylon Sheath	285


SAH12

SAC03
LINE CUTTER

Includes extra blades.

Part No.	Detail	THB
SAC03	Line Cutter	360



POSEIDON MKVI

THE WORLD'S FIRST RECREATIONAL REBREATHER



- Get closer to marine life
- Much more time underwater
- Far less disturbing to marine life
- Lighter and smaller
- Safer and easy to use
- Patented safety technology
- Fully automated operation
- No decompression stops
- Enjoy the "no bubble" silence

The Poseidon MKVI Rebreather is the world's first and only electronic, fully automatic, closed circuit recreational rebreather (e-CCR). Patented sensor calibration and mouthpiece technology combined with fully automated operation make the Poseidon MKVI simple and safe to dive. Lightweight and compact, the MKVI is suitable for entry-level divers but can be upgraded as the diver's experience grows.

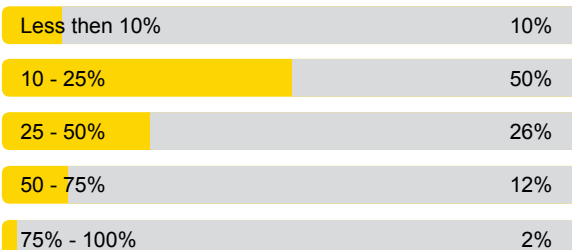
REBREATHER DIVING WITHIN 10 YEARS

Poll conducted during a webinar in January 2013 with over 100 senior dive instruction professionals attending:

QUICKPOLL

WHAT PERCENTAGE OF DIVERS DO YOU BELIEVE WILL BE DIVING WITH REBREATHERS IN TEN YEARS TIME?

POLL RESULTS:



Offer your customers the first new diving experience in decades and get a head start on competition.

Join some of the world's top dive stores, resorts and liveboards to profit from the rebreather revolution!

Boost your bottom line from high value sales of new equipment, training and consumables.

Take the lead in this exciting, cutting-edge technological revolution by committing to make money and have fun.

BECOME A REBREATHER CENTER.

E6011-020 DISCOVERY MKVI REBREATHER

Includes: 1 x E-module assy, 1 x canister housing assy, 1 x mouthpiece ADV, 1 x battery, 1 x charger, 2 x Xstream 1st stages, 1 x Jetstream oct, 4 x CC-hoses, 1 x left & right counter lungs, 2 x T-pieces, 4 x cylinder straps and 2 x O2 cells.

60 m UPGRADE

E6011-032 : E Module Factory Upgrade (Upgrade of an existing E-module & Battery in factory to 60M - new counter lungs & hoses)

E6011-029 : Battery Module 60M - (New battery)

E6011-033 : 60M-Enabled MKVI Upgrade - (60m battery, counter lungs & hoses - only with new 60M MKVI)

** Contact your nearest Dive Supply or Rebreather center for unit prices

REBREATHER BCD

The rebreather BCD is the first of its kind and features include integrated exchangeable lungs, weight system and the Poseidon individual patch system. The rebreather BCD is constructed to the highest quality and durability using ballistic nylon, YKK zippers and hand crafted detailing. Available in 4 colors.

Integrated counter lungs, Integrated weightpockets, case for optional crotch strap, velcro for patches or gauntlet.

Sizes: XS, S, M, L, XL

Colours: Blue, Red, Black & Grey

Part No.	Detail	THB
E0337-0xx	Rebreather BCD	27,134



ONE WING & ONE HARNESS

ONE WING

Poseidon's single tank wing in the ONE design One Wing is designed both for beginners and for more experienced divers

- ▶ 4 dump valves
- ▶ Inflator with Stainless steel button
- ▶ Non – flex tankband
- ▶ Clam Retract System
- ▶ Material Cordura 1000
- ▶ Colours: Blue & Black

Part No.	Detail	THB
E0335-0xx	One Wing 50	16,488



One Wing



One Harness

ONE HARNESS

The One Harness is an enhanced version of the Besea Advanced harness. Ergonomic harness 40 cc system, fits most sizes.

Part No.	Detail	THB
E0336-0xx	One Harness	18,341

MK VI ACCESSORIES

Part No.	Detail	THB
E000-47	Weight Pocket with Pins	2,240
E0605-001	Display Gauntlet S	1,407
E0005-065	Protection Handle	4,851
E0000-468	11 inch adapter Complete	4,309



E0000-468



E0005-065



E000-47



E0605-001



LL-19



SOFNODIVE 797, PRE PACKED SCRUBBER (2 Pcs)

- **Material:** SodaLime
- **Technical Feature:** Easy install, 3 hour dive time (CE), 2 year shelf time, disposable, 2.7kg

Part No.	Detail	THB
E6011-013	Pre Packed Scrubber (2 Pcs)	4,093



M99997

TANK

Part No.	Detail	THB
LL19	Luxfer LL19 Tank	6,046
M99997	Oxygen Sticker for Tank	67



LGVP99



LVCA8044RH



LVCA8044LH

THERMO MODULAR VALVE

Part No.	Detail	THB
LVCA8044LH	Modular Valve Left Hand	3,557
LVCA8044RH	Modular Valve Right Hand	3,557
LGVP99	Handwheel Green for Nitrox Tank	272



IRDA USB ADAPTER

Part No.	Detail	THB
E6010-322	IrDA USB Adapter	3,742



O2 SENSOR (MOLEX)

Part No.	Detail	THB
E6010-206	O2 Sensor (Molex)	4,761



E6011-015



E6011-027



E6011-028

BATTERIES

Part No.	Detail	THB
E6011-015	Battery Charger	11,026
E6011-005	Battery Module - Rec 40	14,925
E6011-027	Battery Module - Deco 40	16,509
E6011-028	Battery Module - Deco 48 Trimix	20,034



E6011-005

SINGLE BLADDER BCD

Part No.	Detail	THB
OBC117-K45	45lb / 20kg Lift in Black	20,395
OBC117-K60	60lb / 27kg Lift in Black	19,710



BC'S WITHOUT RETRACTION BANDS

Part No.	Detail	THB
OBC116-45B	45lb / 20kg Lift in Black ONLY	16,150
OBC116-60B	60lb / 27kg Lift in Black	13,643
OBC-BL32-B	32lb Blue Line Single Bladder	13,805
OBC116-32R	32lb Single Bladder Red	17,373



IQ PACK

Price does not include backplate.

Part No.	Detail	THB
OIQ XS-S	IQ Pack - XS-S	16,073
OIQ M-L	IQ Pack - M-L	16,073
OIQ L-XL	IQ Pack - L-XL	16,073



ONE PIECE HARNESS SYSTEM

(Harness only, backplate sold separately)

Part No.	Detail	THB
OBP166	Harness System only, no Backplate	4,950





OBCA-BOOKSCREW

COMFORT HARNESS SYSTEM

Part No.	Detail	THB
OBP133-S	Harness w/Stainless Steel Backplate	15,008
OBCA-CBD2-M	M (Optional Cummerbund)	2,792
OBCA-CBD2-L	L (Optional Cummerbund)	2,901
OBCA-CBD2-XL	XL (Optional Cummerbund)	2,901
OBCA-BPP-K	Back Pad w. Bookscrew	3,010

ACCESSORIES

Part No.	Detail	THB
OBCA-BOOKSCREW	Bookscrew	109



BACKPLATE

Part No.	Detail	THB
OBP020	Aluminium Backplate 1kg	6,058



OBCA143

POCKETS

Part No.	Detail	THB
OBCA269	Compact Weight Pocket 13 x 15cm, 2.3kg	1,384
OBCA143	Small Utility Mask Pocket 25 x 15cm	2,660
OBCA270	Compact Quick Dump Pocket (Pair) 6.8kg	7,141



OBCA269



OBCA270

SLIPSTREAM FIN

A fin so revolutionary that the U.S. Navy cut their swim time by 1 minute on a 500 Meter Swim ! This proven fin design is manufactured from a lightweight, neutrally buoyant Monoprene resin that results in better trim positioning with maximum thrust on the down kick and minimal resistance on the up kick

- ▶ Comfortable foot pocket
- ▶ A lightweight, neutrally buoyant Monoprene resin
- ▶ Comfort fit adjustable straps
- ▶ Colour: Black
- ▶ Available in size: L, XL, XXL

Part No.	Detail	THB
OF-STREAM-L	Slipstream Fin - L	5,887
OF-STREAM-XL	Slipstream Fin - XL	5,887
OF-STREAM-XXL	Slipstream Fin - XXL	5,887



LINE CUTTERS

Part No.	Detail	THB
OA-LCUT	Line Cutter Replaceable Stainless Blade	1,131
OBCA266	Pouch for Line Cutter/ Shears	1,601


OA-LCUT

OBCA266

BC FIELD REPAIR KIT

Part No.	Detail	THB
OBCA415-B	Repair Kit Black	1,030
OBCA415-R	Repair Kit Red	1,030



SILICONE TUBING

Part No.	Detail	THB
OT-1/4	Black Tubing	136

*** Price per foot

RETRACTION BANDS

Part No.	Detail	THB
OBCA141	Retraction Band 12 units	1,218


OT-1/4

OBCA141



OA-494S-K

STAGE BOTTLE HARD & SOFTWARE

A-494S-K:

Continuous 1" stage bottle strap with carrying handle & swivel bolt snaps. Includes hose clamp.

A-490-S:

2.0" stage Bottle neck ring with 4.5" stainless steel swivel eye

Part No.	Detail	THB
OA-494S-K	1" Stage Bottle Strap w. handle + swivel	2,276
OA-STRAP	Fits 5.5" tanks	565
OA-STRAP-LG	Fits 7-8" tanks	565



EMERGENCY DEPLOYMENT SYSTEM w. TUBING (BACKPLATE not INCLUDED)

3 compartment EDS system designed for better deployment of the 660' depth rated canister (BCA298), SMB or lift bags can be butt mounted on any of the back plates or IQ pack.

Part No.	Detail	THB
OBCA267-K	Emergency Deployment System	3,388



DUAL CYLINDER BANDS

Part No.	Detail	THB
OBD119-K	5 width 20.3cm OD Twin Band Kit	2,850
OBD2572-K	6.63 width 18.5cm Twin Band Kit	7,946
OBD3080-K	7.60 Width Fits 20.3cm O.D	7,946



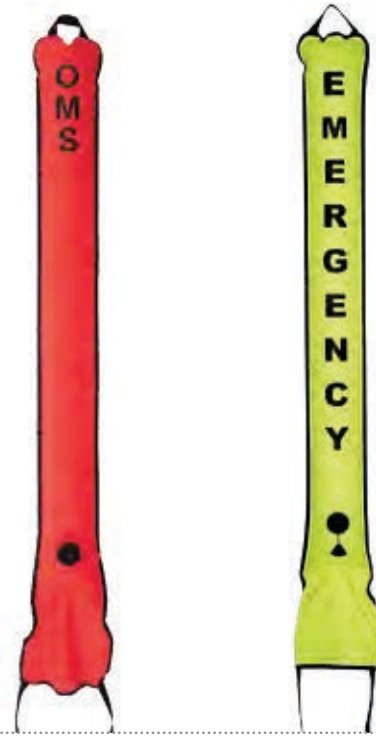
LOW PRESSURE HOSE

Part No.	Detail	THB
OHS-LP84	Low Pressure Hose 213.4cm	2,427

FLOTATION DEVICES

OMS® offers five flotation units with manual dump valves & unique “non-air spill” opening that prevent your SMB or lift bag from dumping air or taking on water when it hits the surface. The new compact 22.50kg lift bag is perfect for those smaller jobs. All SMB’s & lift bags have a point of attachment for a slate.

Part No.	Detail	THB
OBCA255	SMB 1.57m L 13kg lift	3,102
OBCA255-E	SMB 1.57m L 13kg lift	3,102



DIVE SLATES

Part No.	Detail	THB
OA-W-SLATE	Wrist Slate	1,291



JON LINES

Part No.	Detail	THB
OA196-K	3.30m Line	1,350
OA-197	Jon Line w/integrated Pouch	1,505



3 BAR SERRATED SLIDE

Part No.	Detail	THB
OH-SS3BS	3 Bar Serrated Slide 5cm	108
OH-SS3B	3 Bar Slide 5cm	104



OH-SSEQ3



OH-SS3BS

DELTRIN SIDE RELEASE BUCKLE

Part No.	Detail	THB
OH-SR2	5cm	163



LINE ARROW

Part No.	Detail	THB
OA-LA-S	6.70cm	47
OA-LA-L	8.70cm	47





QUICK LINK

Part No.	Detail	THB
OH-SSQL2	5.00cm	272
OH-SSQL1.5	3.80cm	213



OH-RS2



OH-BR3

ROUND RING

Part No.	Detail	THB
OH-RS2	5 x .25cm	158
OH-BR3	Brass Ring 7.6cm	290



D-RING

Part No.	Detail	THB
OH-SSD2	5.00x0.65cm	206



CARABINER

Part No.	Detail	THB
OH-SSC3	7.60cm	325
OH-SSC2.5	6.30cm	190



SHACKLE

Part No.	Detail	THB
OH-SSS2L	Shackle 5cm	374

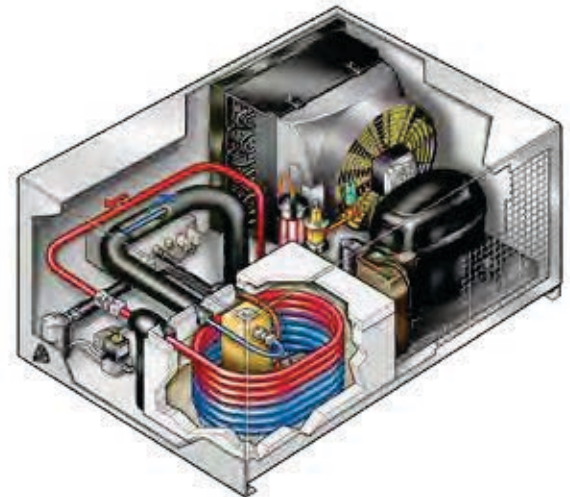
AIR STORAGE AND PURIFICATION

B-KOOL

The B-KOOL refrigeration dryer from BAUER considerably reduces the running costs of the compressor whilst protecting the environment at the same time.

At locations with particularly high ambient temperatures, B-KOOL assures a remarkably longer life time of the filter cartridge. You will benefit from a lower cost of purchase and storage of filter cartridges, a longer uninterrupted compressor operation and a lower consumption of filter cartridges.

- ▶ 200 - 680 l/min
- ▶ 100 - 350 bar
- ▶ Up to 11 times longer life for your filter cartridges!
- ▶ Environmentally sound
- ▶ Integrated or as stand-alone version
- ▶ Easy to retrofit



AIR STORAGE CYLINDERS

MAB1 *

- Air Storage Cylinders
- 50 Liter Pressure Vessel with valve
- 300 Bar working pressure
- Steel cylinders with 10 year Hydro test
- Can be connected to custom specifications

*Price per cylinder Inc valve

Dive Supply's work shop facilities can clean, Hydro test & certify cylinders of all sizes

DIN VALVE FOR AIR BANK

MAB900 Din Valve 300bar for Air Bank



BAUER PureAir Certification

“PureAir – Safe Diving”: High quality breathing air is the most important element of your diving equipment. Insufficiently or even non-filtered air from the compressor may jeopardize the health & even the life of any sports diver. The **BAUER PureAir Campaign** offers any diver an easy to use guide for selecting trustworthy filling stations. By choosing to use **BAUER** state-of-the-art technology diving centers are able to meet the highest standards of Air Quality and are recognized with the award of the **BAUER Pure Air seal**.

The exclusive **BAUER PureAir Seal** guarantees any diver that he or she really receives only the purest breathing air. www.bauerpureair.com/diving



To find out how to get your **BAUER PureAir Certification** please contact our Sales & Service team.



JUNIOR II COMPRESSOR

The most compact & highly mobile model in our diving compressor range. Due to its toughness & reliability the JUNIOR has become a global classic. JUNIOR II offers an even more compact design & numerous improvements in details. The patented TRIPLEX filter system guarantees purest breathing air according to DIN EN 12021.



MARINER 200

With 200 l/min. It is the most versatile among the new units of the PROFI-LINE II. Crash frame in series.



MARINER 320

With 320 l/min. the new Mariner 320 is the most powerful portable compressor worldwide!



MARINER 250

Even more performance & equipped with the TRIPLEX P31 / P41 filter in series.



TECHNICAL DATA

Type max. 330 BAR / 5000 psig	Drive	FAD L/min*	RPM min	Drive		Filter System TRIPLEX	Dimensions (app.cm)			Weight net (app.kg)
				kW	HP		L	W	H	
JUNIOR II - B	4-stroke petrol 2)	100	2300	4.0	5.5	P21	78	34	42	44
JUNIOR II - W	Single phase	100	2300	2.2	3.0	P21	66	39	42	46
MARINER 200 - B	4-stroke petrol	200	1,300	6.1	8.0	P21	125	59	63	115
MARINER 200 - E	3-phase	200	1,300	4.0	5.5	P21	125	59	63	115
MARINER 250 - B	4-stroke petrol	250	1,450	6.6	9.0	P31/P41	125	59	63	120
MARINER 250 - E	3-phase	250	1,450	5.5	7.5	P31/P41	125	59	63	135
MARINER 320 - B	4-stroke petrol	320	1,450	9.6	13	P31/P41	130	64.5	70	138
MARINER 320 - E	3-phase	320	1,450	7.5	10	P31/P41	130	64.5	70	154

Also available with switchover device 330 /225 Bar (5000/3300 psi)



MINI-VERTICUS III
Silent housing, compact & powerful!

A newly designed field-proven system concept that sets new standards in technology & ergonomics. The MINI-VERTICUS III unit combines leading-edge compressor technology with expertise. The sound-proofed MINI-VERTICUS III is the ideal partner for diving centers & diving shops, who count on reliable & long-life use coupled with low operating expenses.

- ▶ 225 & 330 bar
- ▶ 150 - 240 l / min
- ▶ 225kg



Type max. 330 bar	FAD l/min	RPM min	Comp. stages	Drive		Filter system P-range	Dimensions (cm)			Weight net (app.kg)	sound pressure
				kW	HP		L	W	H		
MV 100-4-3	150	1340	3	4,0	5,5	P41	102	74	130	255	68
MV 120-4-3	200	1270	3	4,0	5,5	P41	102	74	130	255	68
MV 120-5,5-3	250	1470	3	5,5	8,0	P41	102	74	130	260	68

Also available with switchover device 330 /225 Bar (5000/3300 psi)

VERTICUS 5 THE PROFESSIONAL FILLING-STATION

The powerful silent filling station, which grows according to your needs. The modular system enables simple upgrading in no time. Convenient monitoring of all compressor performance via B-CONTROL. The new optional B-MESSENGER offers remote monitoring & control. The efficient P 61 filter system guarantees purest breathing air according to DIN EN 12021

- ▶ 225, 330 & 420 bar
- ▶ 260 - 630 L/min
- ▶ 425kg



Model max. 330bar/5000psig	FAD l/min	RPM min	Drive		Comp. stages	Filter system P-Range	Dimensions (cm)			Weight net (app.kg)	sound pressure
			kW	HP			L	W	H		
V12.14-5.5-5	260	1185	5.5	7.5	4	P61 or P81	148	83	152	395	72
V12.14-7.5-5	320	1470	7.5	10	4	P61 or P81	148	83	152	400	72
V15.1-7.5-5	370	1050	7.5	10	4	P61 or P81	148	83	152	430	72
V15.1-11-5	450	1320	11	15	4	P61 or P81	148	83	152	440	72
V150-11-5	540	1230	11	15	4	P61 or P81	148	83	152	440	72
V180-15-5	680	1400	15	20	4	P61 or P81	148	83	152	455	72

Also available with switchover device 330 /225 Bar (5000/3300 psi)



Our new POSEIDON EDITION stands for an excellent ratio of price to capacity at very high quality. This product range has been developed for uncomplicated operation combining proven core components from BAUER with a simple, but robust chassis.



- 100 l/min
- 225 / 330 bar

The PE 100 is by far the smallest & lightest compressor unit of the PE range. With its three drive variants petrol, three-phase & single-phase alternating current it is suitable for a wide variety of applications, whether ashore, in vehicles or on the high seas.



- 200 - 300 l/min
- 225 / 330 bar

The PE 200 / 250-TE models offer the optimum weight / price ratio. Owing to their compact construction, the plants are easy to transport & to load onto vehicles. The oil pump allows inclinations up to 15°, therefore making these models most suitable for use on board of ships.



- 300 - 850 l/min
- 225 / 330 / 420 bar

Our new POSEIDON EDITION stands for an excellent ratio of price to capacity at very high quality. The new generation of the VE range excels through its high delivery rates of up to 850 l/min. Tailored for breathing protection and scuba diving requirements, the new compressor control offers quick and easy access to all important functions.



- 200 - 300 l/min
- 225 / 330 bar

The PE 250 / 330-HE horizontal models are by far the most compact high pressure breathing air compressors in their class. Owing to the space-saving arrangement of block & drive, the HE range requires a minimum of floor space in spite of its high throughputs. The standard version comes already equipped with automatic condensate drain & easy-to-use control.

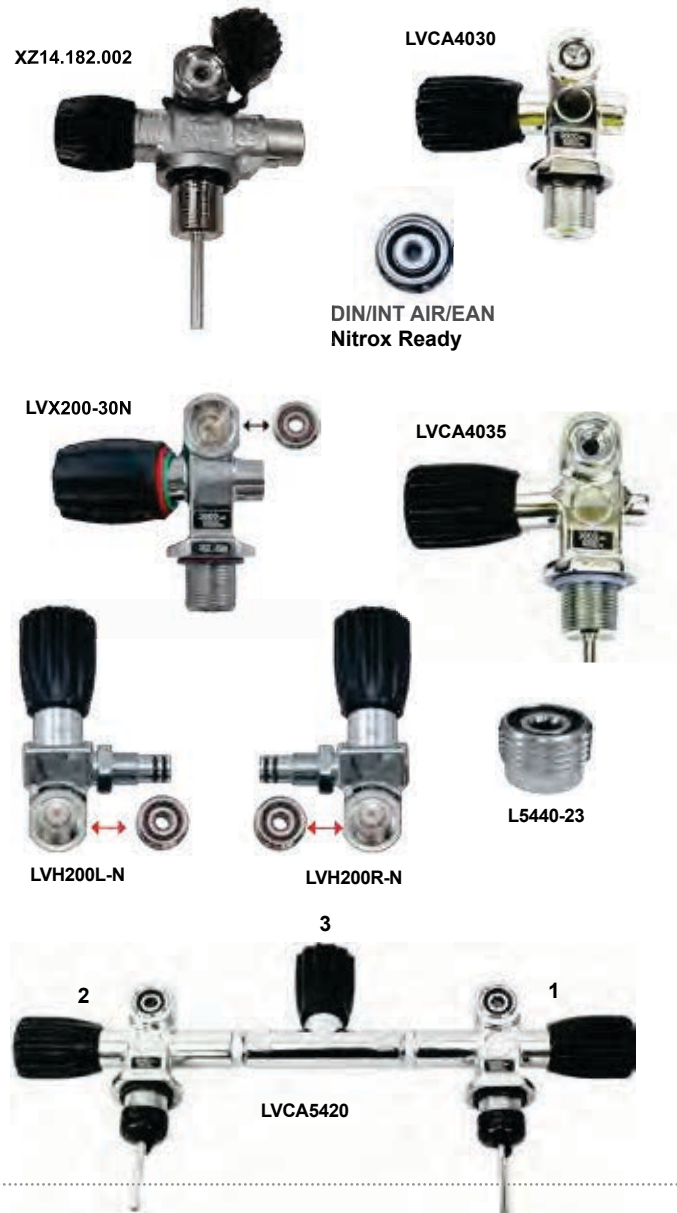


VALVE

Part No.	Detail	THB
LVCA4030	Thermo Valve INT	1,934
LVCA4035	Thermo Pro Valve	2,085
LVH200L-N	Thermo Pro H Adapter Left	3,557
LVH200R-N	Thermo Pro H Adapter Right	3,557
L5440-23	DIN / K Insert w. Viton O-rings, EAN ready	599
XZ14.182.002	Modular Valve Left M25 - (DIN 200 Bar / INT)	5,018
LVX200-30N	XS Scuba PRO Valve	2,199

THERMO TWIN ISOLATION

Part No.	Detail	THB
LVCA5420	Thermo Twin Isolation	10,539
LVCA8044LH	1. Modular Valve Left Hand	3,557
LVCA8044RH	2. Modular Valve Right Hand	3,557
LVCA8033CTR	3. Modular Valve Centre	3,425



TANKS



Cylinder	Service Pressure	Capacity Air	Outside Diameter	Overall Length	Empty Weight	Min. Internal Volume	Price
Part no.	psi / bar	cu.ft. / litres	In. / mm	In. / mm	lbs. / kg.	cu.in/ ltrs	THB
LL06	3,000 207	6.1 172.8	3.21 81.41	11.1 282.6	2.5 1.2	54 0.9	3,940
LL19	3,000 207	19.9 563.6	4.38 111.132	18.6 471.4	8.2 3.7	175 2.9	6,046
LL40	3,000 207	40.0 1,132.8	5.3 133.4	24.6 628.7	15.3 6.9	350 5.7	6,623
LL50	3,000 207	48.4 1,370.7	6.89 175.01	19.0 482.6	21.2 9.6	424 6.9	8,682
LL63	3,000 207	63.0 1,784.2	7.25 184.15	21.9 555.0	26.7 12.1	552 9.0	8,885
LL80	3,000 207	77.4 2,192.0	7.25 184.15	26.1 661.9	31.4 14.2	678 11.1	8,908
LL100	3,300 224	98.8 2,798.0	8.00 203.20	26.2 665.7	41.0 18.6	804 13.2	13,642



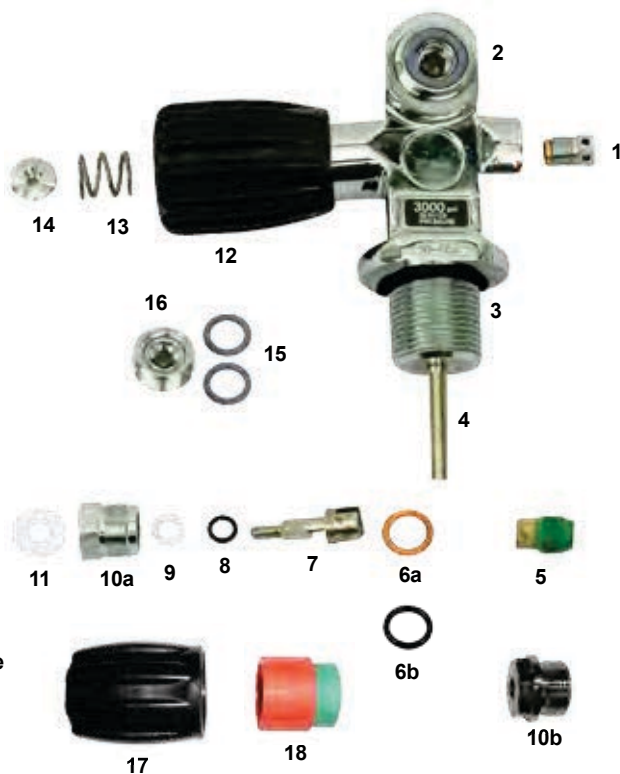
Cylinder prices do not include valves



THERMO VALVE PARTS



- LVK01-AIR Overhaul Kit Thermo K-Valves (Air)
(MA015-U, L35069, L5270-16N, L3100-9-U, L5270-5N)
- LVK01-EAN Overhaul Kit Thermo INT/DIN Valves (Nitrox)
(MA015V-U, L35069-K, L5270-16N, L3100-9E-U, L5270-5N)
- L3990-5000N 1. Safety Assembly (3,000 psi), EAN ready
- TR014-U 2. O-Ring Valve Outlet
- TR014S 2. O-Ring Valve Outlet Polyurethane
- LGR014P9 2. O-Ring Valve Outlet Viton
- MA015-U 3. O-Ring Tank Neck
- MA015V 3. Viton O-Ring Tank Neck
- L5270-15N 4. Dip Tube plated (VP04 Pre 10/09), EAN ready
- LVX04 4. Dip Tube plated (VX04 Post 10/09), EAN ready
- L35069 5. HP-Seat (same as Sherwood)
- L35069-K 5. HP-seat, (as Sherwood) O2 ready
- L5270-16N 6a. Bonnet Gasket, EAN ready
- LVX17-E 6b. O-Ring EPDM (Bonnet)XS Scuba
- L5270-8PN 7. Stem EAN ready
- L3100-9-U 8. O-Ring for Stem, Thermo Valve, AIR
- L3100-9E 8. Viton O-Ring Stem Thermo
- L5270-5N 9. Stem Packing, Ean ready
- L5270-4PN 10a. Bonnet Nut, (same as Sherwood) EAN ready
- LVX10 10b. Bonnet Nut, XS Scuba
- L5240-10 11. Handwheel Washer, EAN ready
- L5240-6A 12. Handwheel - Black
- L5270-6N 12. Handwheel - Green
- L5240-9 13. Spring EAN ready
- L5203-7P 14. Handwheel Nut, EAN ready
- LVP15V 15. Viton O-Ring (Thick) Outlet DIN/INT -Thermo Pro Valve
- MP31B-U 15. O-Ring (Thick) Outlet DIN/INT - Thermo Pro Valve
- L5440-23 16. DIN / K Insert w. Viton O-rings, EAN ready
- LVX20 17. Safety Hand Wheel insert Red&Grn XS Scuba
- LVX22 18. Safety Handwheel only - black XS scuba



SMT VALVE PARTS



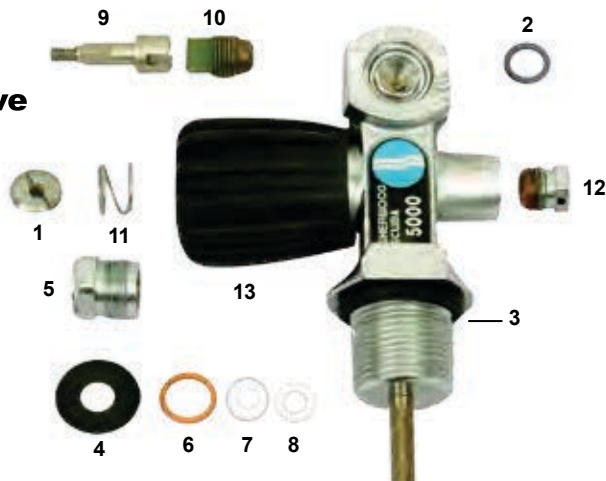
- LGVP00-AIR Service Kit SMT Valve
(LGVP07/09/45, MA015-U, 2 x LGR010E-U, LGRM075E-U)
- LCV04-A 1. Complete Stem Assembly Incl. 7, 2x8, 9, 10
- LGVP45 4. HP-Seat SMT Valve, Oxygen ready
- LGVP07 7. Gasket
- LGR010E 8. O-Ring Stem
- LGVP09 9. Backup Ring
- LGRM075E-U 10. O-Ring Bonnet
- LGVP20 20. Handwheel elastomer
- LGVP99 20. Handwheel green (Nitrox)
- LGVP22 22. Handwheel Nut
- LGVP26-33 26. Safety Plug only
- LCV26-30 25.&26. Safety Plug & Burst Disk 3,000 psi (5,000 burst)
- LGVP28 28. Dip Tube
- 2. See Thermo valve parts above
- 3. See Thermo valve parts above



SHERWOOD VALVE PARTS



- L350620-AIR Overhaul Kit Sherwood Valve **Sherwood Valve**
(MA015-U, L350067, L350069, L350610, L350618)
- L5203-7P 1. Handwheel Nut (same as Thermo), EAN ready
- L350611A 11. Spring - Sherwood valve
- L60002 13. Handwheel Sherwood - Black
- L1413 4. Handwheel Washer, Sherwood valve
- L5270-4PN 5. Bonnet Nut (same as Thermo), EAN ready
- L350610 6. Copper Gasket
- L35067 7. Thick Teflon ring (new style seal)
- L350618 8. Thin Teflon ring (new style seal)
- L9350612 9. Stem/Spindle
- L35069 10. Plug Assembly HP-Seat (same as Thermo)
- L35069-K 10. Plug Assembly HP-Seat (same as Thermo) O2 ready
- L400012048 12. Safety Plug Assembly 3,000 psi
- 2. See Thermo valve parts above
- 3. See Thermo valve parts above





MINERAL OIL

Part No.	Detail	THB
MM01	Mineral Oil - 1 litre	450
MM03	Mineral Oil - 3 litre	1,300
MM05	Mineral Oil - 5 litre	2,125

BAUER SYNTHETIC OIL

Part No.	Detail	THB
QN28355-1	Synthetic Oil - 1 litre	1,440
QN28355-5	Synthetic Oil - 5 litre	6,720

MOLECULAR SIEVE

Part No.	Detail	THB
M100-S	Molecular Sieve 1000g	645

ACTIVATED CARBON

Part No.	Detail	THB
M100-C	Activated Carbon 500g	310
M100-Pack	1kg Molec. Sieve & 500gr. Carbon	950

FELT

Part No.	Detail	THB
M105	PER SQ. METER	1,185
M107	BAUER P41 (5 SET)	550
M108	BAUER P31 (5 SET)	520
M109	LW 260-450 (5 SET)	280
M110	LW 160-245 (5 SET)	180
M111	BAUER P21 (5 SET)	90

FILLING VALVE

Part No.	Detail	THB
Q071744	Filling Valve Bauer No Gauge	15,430
SDY-3	Tank Filling Valve	4,078
Q071343	Filling valve PN200 w gauge	15,430
Q071344	Filling valve PN300 w guage	15,430
Q071743	Filling valve PN300	15430

FILLING HP-HOSE

Part No.	Detail	THB
M112SS	Filling HP-hose 1m SS	3,050
M113SS	Filling HP-hose 1.5m SS	3,500
M114SS	Filling HP-hose 2m SS	3,950
M115SS	Filling HP-hose 3m SS	4,848
M117SS	Filling HP-hose 4m SS	5,694
M118SS	Filling HP-hose 5m SS	6,634
QN2817	Bauer-Filling hose 1m	8,932
MFLEX-O2-SS	Flexible O2 hose R1/4" SS	5,694



MM05



MM03



MM01



QN28355-1



QN28355-5



M100-S



M100-C



M109



M111



Q071343



Q071744



SDY-3



Filling HP-Hose



SAP-0002A

SAP-0001

M2ST-TOOL

MSOCKET-6MM

XZ43.403.000
XZ43.403.001

M51

XZ43.300.225

XZ43.040.000

XZ43.300.210

XZ41.496.101

XZ43.300.017

XZ43.191.107

XZ43.300.107

V622 265 SW1/4" / 5.5mm

TSA58

ADJUSTING TOOL 2nd STAGE

Part No.	Detail	THB
SAP-0002A	Adjusting Tool 2nd Stage	2,725
M2ST-TOOL	Balanced, Multi without Gauge	5,802

INTERMEDIATE PRESSURE GAUGE

Part No.	Detail	THB
SAP-0001	Intermediate Pressure Gauge	855

6mm EXTENSION DRIVE

Part No.	Detail	THB
MSOCKET-6MM	6mm Extension Drive	980

COVER TOOL NEW 2nd STAGE

Part No.	Detail	THB
XZ43.403.000	Cover Tool R395 / S600 / Air2	1,044
XZ43.403.001	Covers tool C200, C300	224

1st STAGE HOLDING TOOL

Part No.	Detail	THB
M51	1st Stage Holding Tool	1,382

FLOW VANE TOOL

Part No.	Detail	THB
XZ43.300.225	Flow Vane Tool - 2nd Stages	2,130

SCUBAPRO UNIVERSAL TOOL

Part No.	Detail	THB
XZ43.040.000	Scubapro Universal Tool	5,848

PLASTIC SYRINGE

Part No.	Detail	THB
XZ41.496.101	Plastic Syringe	364

HP-SEAT TOOL MK2

Part No.	Detail	THB
XZ43.300.210	HP-Seat Tool MK2	1,544

YOKE NUT SOCKET

Part No.	Detail	THB
XZ43.191.107	Yoke Nut Socket	4,466

O-RING PICK

Part No.	Detail	THB
XZ43.300.107	Plastic/St. Steel	330
XZ43.300.017	Brass	1,884

NUT DRIVER

Part No.	Detail	THB
V622 265 SW1/4"	Nut Driver 1/4"	1,440
V622 265 SW5.5	Nut Driver 5.5mm	1,210

SCHRADER VALVE TOOL

Part No.	Detail	THB
TSA58	Schrader Valve Tool	370



TORQUE WRENCH

Part No.	Detail	THB
XZ43.300.998	Torque Wrench 5 - 35N	26,118

PRESSURE GAUGE

Part No.	Detail	THB
V1117	Oil Filled Pressure Gauge 250bar Stainless	5,094
SAP-0003A1	Gauge for HP Checker	1,025
QN1315	Gauge Bauer 315bar	3,650
QN4101	Gauge Bauer 400bar	4,075
VMAN-SD1S5C50Y	Digital Pressure Gauge O2clean	41,464

MAGNEHELIC GAUGE

Part No.	Detail	THB
XZ43.405.001	Digi-Mag 6000 Digit.	21,886
XZ43.404.001P	Magnehelic Mouthpiece	776
XZ28.199.000	Magnehelic Vacuum Gauge	12,308

PRESSURE CHECKER

Part No.	Detail	THB
SAP-0003A	Tank Pressure Checker INT	2,810
SAP0004A	Tank pressure checker DIN 300bar	3,105

AIR NOZZLE STAINLESS STEEL

Part No.	Detail	THB
SAA01	Air Nozzle Stainless Steel	525

DIVERS DELUXE TOOL KIT

Part No.	Detail	THB
TS105	Divers Deluxe Tool Kit	1,830

O-RING TOOL KIT

Part No.	Detail	THB
TDA79	O-Ring Tool Kit + Silicone	2,290

TANK VALVE KNOB REMOVAL TOOL

Part No.	Detail	THB
TSA99	Tank Valve Knob Removal Tool	950



XZ43.300.998



V1117



SAP-0003A1



QN1315



SAP-0003A



XZ43.405.001



XZ28.199.000



XZ43.404.001P



VMAN-SD1S5C50Y



TS105



SAA01



TDA79



TSA99



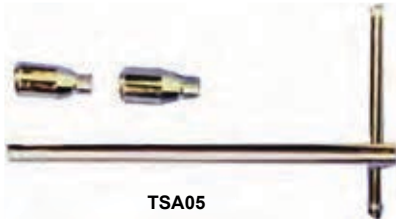
S7402



M99



TSA83



TSA05



XZ43.018.000



TSA65



MS30

MULTI TOOL

Part No.	Detail	THB
S7402	Stainless Steel with 12 Tools	845

CABLE TIE PACK

Part No.	Detail	THB
M99	Cable Tie Pack of 100 Straps	285

CABLE TIE INSTALLATION GUN

Part No.	Detail	THB
TSA83	Cable Tie Installation Gun	3,275

HOSE PROTECTOR TOOL

Part No.	Detail	THB
TSA05	Hose Protector Installation Tool	3,255
XZ43.018.000	Hose Protector Installation	2,902

ULTRASONIC SOLUTION

- ▶ Mixing ratio 100gr powder to 2L water
- ▶ Powder dissolves in water
- ▶ 4.5kg bucket

Part No.	Detail	THB
TSA65	Ultrasonic Solution	5,600

ULTRASONIC CLEANING DEVICE

- ▶ Made in Germany by a world leading manufacturer of ultrasonic cleaners.
- ▶ Ultrasonic frequency 37.000 hertz
- ▶ Tank volume max. 2.75 litres, w 190 x d 85 x h 60mm
- ▶ Cleaning tank made of cavitation resistant stainless steel
- ▶ Cleaning time indicated by LED display
- ▶ Easy drain of cleaning liquid through specially designed tab & drain duct.

Part No.	Detail	THB
MS30	Ultrasonic Cleaning Device	47,840



SOFT POCKET WEIGHT BELTS

Part No.	Detail	THB
DB5000	3 Pockets	590
DB5001	4 Pockets	640

PLASTIC WEIGHT KEEPER

Part No.	Detail	THB
SAW03	Plastic Weight Keeper	30

WEIGHT BELT BUCKLES

Part No.	Detail	THB
S4001	Unbreakable Plastic Buckles	140

WEBBING ROLL

Part No.	Detail	THB
M1998	Webbing Roll (50m)	2,590
M1999-1.4	Webbing 1.4m	100
M1999-1	Webbing 1m	70

SS WEIGHTBELT BUCKLE

Part No.	Detail	THB
UBK304	SS Buckle - 2 Slots	250
UBK504	SS Buckle - 3 Slots	340

WEIGHTBELT & BUCKLE

Part No.	Detail	THB
SAW02	Saekodive	700

SUPER CINCH TANK BAND

Part No.	Detail	THB
X20.135.005	Scubapro Super Cinch Band	3,105

TANK BAND

Part No.	Detail	THB
UTB201	Tank Band	885

LEAD WEIGHTS

Part No.	Detail	THB
M6000-S	0.8kg Lead	250
M6000-B	1.5kg Lead	420

CAM LOCK

Part No.	Detail	THB
UCL201	Cam Lock	305

TANK ANTI SLIPPER

Part No.	Detail	THB
UNS234	Tank Anti Slipper	165



DB5000



Y K

S4001

SAW03



M1998-9

B K Y



UBK 304

UBK504



SAW02

B K Y



X20.135.005



UTB201



UCL201



M6000-S/B



UNS234



SCUBAPRO MULTIFUNCTION REEL
High anodized frame cannot be deformed or damaged under any condition

Part No.	Detail	THB
X40.122.000	Multifunction Reel 80m	5,775



WRECK REEL AUTO STOP

Part No.	Detail	THB
SAR05	Wreck Reel Auto Stop 85m	2,380
SAR15	Wreck Reel Auto Stop 45m	2,115



WRECK REEL

Part No.	Detail	THB
SAR14	Wreck Reel 45m	2,355

FINGER REELS

Part No.	Detail	THB
SAR06	Finger Reel 45m	875
SAR16	Finger Reel 30m	830
SAR26	Finger Reel 15m	785



TANK BOOTS

Part No.	Detail	THB
SAT01	Rubber for LL63, LL80	424
SAT02	Rubber 18.4cm for 12L Steel Tank	447
SAT03	Rubber 20.3cm for 15L Steel Tank	507
TA56	Rubber 17.5cm for LL50	770



TANK MESH
Colours -Yellow & Black

Part No.	Detail	THB
TA65-K	Tank Mesh - Black	320
TA65-Y	Tank Mesh - Yellow	332



VALVE CAPS

Part No.	Detail	THB
SA05	Rubber Valve Cap	47
TRP66	Cupped Valve Cap	59
LVC-K	Thermo Pro Valve Cap	72



NITROX STICKERS/TAPE

Part No.	Detail	THB
M99997	Oxygen Sticker for Tank	67
M99998	O2 Clean Sticker	23
M99999	EAN Tank Sticker	105
TDS07	Nitrox Valve Tape	1,117





RESCUE MARKER with BAG - DEEP BLUE

- ▶ 145cm(57") x 15.5cm (6")
- ▶ Signal Orange / Neon Yellow combo
- ▶ Durable 210 denier nylon fabric
- ▶ Stainless steel rings & marine brass snap hook
- ▶ Compact carry pouch for BCD attachment

Part No.	Detail	THB
DBSM02	Rescue Marker with Bag	1,950

POCKET RESCUE MARKER - DEEP BLUE

- ▶ 152cm x 14cm (60" x 5.5")
- ▶ Signal Orange / Neon Yellow combo
- ▶ Durable 210 denier nylon
- ▶ Securely retained by an elastic bungy cord

Part No.	Detail	THB
DBSM01	Pocket Rescue Marker	1,250

SAFETY BALLOON - DEEP BLUE

Part No.	Detail	THB
DB6690	Safety Balloon	350
DB6691	Safety Balloon with Bag	450
DB8004	Safety Balloon Bag	150

MARKER BUOY - SCUBAPRO

Part No.	Detail	THB
X40.093.000	Marker Buoy (open end)	1,865
X40.092.500	Sealed MarkerBuoy Nylon-Orange	3,865

SURVIVAL SAUSAGE - SAEKODIVE

Part No.	Detail	THB
SB-06	Survival Sausage with Pouch	2,605
SB-02	Survival Sausage	900

LIFT BAG

Part No.	Detail	THB
TLS15	Lift Bag 35kg w. Dump Valve	3,185
TLS20	Lift Bag 75kg	4,070

DIVER'S FLOAT

Part No.	Detail	THB
DBS30	Diver's Float	890

LIFT BAG "SEAC SUB"

Part No.	Detail	THB
B1900	Lift Bag 100kg	7,270
B1910	Lift Bag 200kg	9,415





UAH150-01



UAH380-01

SCUBA ALERT SIGNAL DEVICE

Part No.	Detail	THB
UAH150-01	Scub-Alert Standard UW+Surface	1,610

SCUBA HORN

Part No.	Detail	THB
UAH380-01	Duo Alert Standard Fitting	1,915



O K Y

TD611

SAW11

TDA14

SAW10

WHISTLE

Part No.	Detail	THB
SAW10	High Pitch Whistle	265
SAW11	Standard Whistle	40
TD611	Wind Storm Whistle	470
TDA14	SOS Whistle	170



B K Pi Y G

TANK BANGER

Available colours: Blue, Black, Yellow, Pink & Green

Part No.	Detail	THB
TTA20	Tank Banger	505



B K R Y

UNDERWATER RATTLER

Available colours: Blue, Black, Yellow & Red

Part No.	Detail	THB
DB6700	Underwater Rattler	980



DBWR1

SAW15

SAW13

TSL05

TSL-13-Y

TSL-19-Y

SLATE

Part No.	Detail	THB
DBWR1	Slate w. Quick Connect 15x13cm	282
SAW13	Slate A4	492
SAW15	Wrist Slate 3 Piece Multi Page	622
TSL-19-Y	Slate & Graphite Pencil	612
TSL-13-Y	Graphite Pencil	290
TSL05	Quest Magnetic Slate	1,715



LIFE VEST

Part No.	Detail	THB
DBL309-XS	Junior - XS	600
DBL309-S	Junior - S	660
DBL302-M	Adult - M	750
DBL302-L	Adult - L	840
DBL302-XL	Adult - XL	960
DBL302-XXL	Adult - XXL	1,080



RETRACTOR

Part No.	Detail	THB
URT-200	75cm SS Retractor	770
SAR-03A	Auto Lock Retractor 90cm	810
SAR03C	Retractor 3m	940

RETRACTOR SMALL

Part No.	Detail	THB
SAR13A	40cm SS Line - 2 Clips	615
SAR13B	40cm SS Line - Clip/Female End	615
SAR13C	40cm SS Line - Clip/Ring	615



EQUIPMENT CONNECTORS

Part No.	Detail	THB
SAC01B	Swivel Plastic Hook & Looped End	125
SAC01C	Female End, Male End, Looped End & Swivel Plastic Hook	140
SAC01D	Octopus Holder - Black & Yellow	205
SAC01E	Fin Holder	220



COIL/NECKLACE

Part No.	Detail	THB
SAR-0	Quick Release Coil Snap	540
SAR07	Regulator Necklace	335
SAR08	Quick Release Coil Lanyard	590
SAR09	Cable Wire Coil Yard	770





REEF HOOK

Part No.	Detail	THB
TDF82	Reef Hook	705



S4002-95 S4003-88 S4003-120 S4002-120

BRASS CLIPS

Part No.	Detail	THB
S4002-95	Small hook, S	220
S4002-120	Large hook, L, 120mm	295
S4003-88	Small ring, S	190
S4003-120	Large ring, L, 120mm	305



S2450-80 SS243-6 SS243-8

STAINLESS STEEL HOOK

Part No.	Detail	THB
S2450-80	Stainless Steel Snap Hook	365
SS243-6	Stainless Steel 60mm Hook	235
SS243-8	Stainless Steel 80mm Hook	395



TRP09

SAL21

TRP08

LANYARD

Part No.	Detail	THB
SAL21	Lanyard	75
TRP09	Camera Lanyard with Brass Clip	285
TRP08	Deluxe Stretch Lanyard	265



ALUMINIUM SNAP HOOK

Part No.	Detail	THB
SAS-12DF-5	Snap Hook 50mm	55
SAS-12DF-6	Snap Hook 60mm	60
SAS-12DF-7	Snap Hook 70mm	70
SAS-12DF-8	Snap Hook 80mm	80



G K

B Y K

B Y K

UHH07

SAH09

SAH01

HOSE CLIP/CLAMP

Part No.	Detail	THB
SAH01	Double Hose Clamp - B, K, Y	52
SAH09	Triple Hose Clamp - B, K, Y	86
UHH07	Double Hose Clip - G, K	81



DBS1

Part No.	Detail	THB
DBS1	Plastic Mask Box	90



BUCKLE

Part No.	Detail	THB
BS75106	Male Buckle 25mm	115
BS75107	Female Buckle 25mm	170
BS75073	Male Buckle 40mm	115
BS75074	Female Buckle 40mm	165
BS75075	Male Buckle 50mm	145
BS75076	Female Buckle 50mm	200



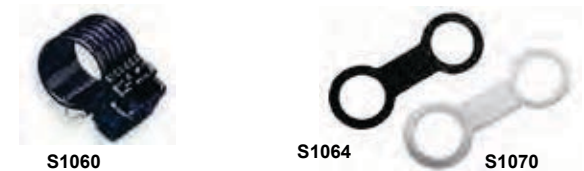
MASK BUCKLE

Part No.	Detail	THB
XZ24.999.102	Scubapro Crystal VU/ Clear VU Buckle	95
S083	Mask Buckle	50



SNORKEL HOLDER

Part No.	Detail	THB
S1064	Rubber Snorkel Holder	30
S1070	Clear PVC Snorkel Holder	30
S1060	Snorkel Holder	60



RETAINER

Part No.	Detail	THB
SHLT	Mask Strap Retainer	20
DBZ01-K	Mask Strap Retainer - Black	15
X26.021.002	Quick Clip Assembly	215



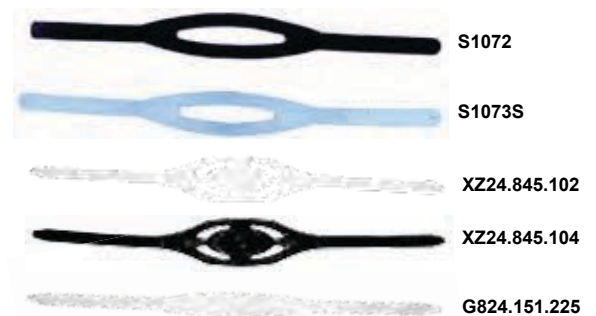
MASK STRAP

Part No.	Detail	THB
DB6689	Mask Strap Cover w/o Print	190
DB6689-1	Mask Strap Cover with Print	190
DB6688	Neoprene Mask Strap w/o Print	200
DB6688-1	Neoprene Mask Strap with Print	210



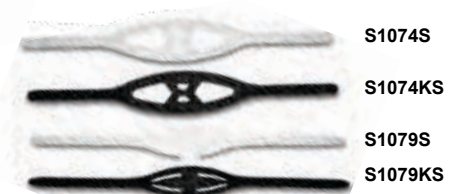
MASK STRAP

Part No.	Detail	THB
S1072	Rubber Mask Strap - width 2cm	145
S1073S	Silicone Mask Strap - width 2cm	195
S1074	Silicone Strap Clear & Black - width 2cm	195
XZ24.845	MaskStrap Spectra/Marin Clear & Black - width 1.7cm	500
G824.151.225	Mask Strap 16mm Clear - Zoom - width 1.7cm	290



GOGGLE STRAP *

Part No.	Detail	THB
S1079S	Clear Silicone Goggle Strap - width 1.7cm	155
S1079KS	Black Silicone Goggle Strap - width 1.7cm	155



* Can be used for some models of masks as well



FIN SPRING STRAPS

Part No.	Detail	THB
B50902	Spring Strap for Propulsion Sizes: S/M, M/L, L/XL	1,185
S1175	Spring Strap with Buckle (Pair) Sizes: S, M, L, XL	1,510
S1275	EZ Spring Fin Strap pair - Sizes: S, XL	1,335
XZ25.365	Spring Heel Straps - Jet Fin (M, L, XL)	2,275



FIN STRAPS

Part No.	Detail	THB
S1075	Fin Strap / 1 Piece	160
BZ512	Vela Fin Strap Seac Sub	450
SA004A	Saeko Jet Fin Strap	160
XZ25.350.102	Jet Fin Strap	360
B9188/89	Kalibra Fin Strap Sizes: XS-M/ ML-XL	405



FIN STRAPS / BUCKLES

Part No.	Detail	THB
DBF770KIT	Strap Kit for Fin DBF770	190
DBF770BUCKLE	Fin Buckle for DBF770	75
DBF770STRAP	Fin Strap for DBF770	80
S271	Fin Strap Buckle	115
BZ513	Vela Fin Buckle	305
XZ25.071.005	Twin Jet strap kit	865
XZ25.076.005	Twin speed buckle/strap kit	945



KNIFE STRAP

Part No.	Detail	THB
S1077-2	Quick Release Knife Strap	210
S1077	Rubber Knife Strap	180
TKN02	Knife Strap with Spring	480



BANDS

Part No.	Detail	THB
TWA32	Velcro Stretch Band 3/4"	420
TWA33	Velcro Stretch Band 1"	420
TWA39	Double Lock Velcro 20mm	185



REAR WEIGHT HOLDER

Part No.	Detail	THB
B769	Rear Weight Holder	780

WEIGHT POCKET

Part No.	Detail	THB
B784	Weight Pocket	2,620

BCD BACK PACK COMPLETE

Part No.	Detail	THB
UTP201	Tank Pack Complete	2,405

SHOULDER DUMP VALVE

Part No.	Detail	THB
B75038	Quick Exhaust Unit	2,260

BUCKLE

Part No.	Detail	THB
UBC38	BCD Fastener Buckle	105

POWER INFLATOR

Part No.	Detail	THB
X21.600.100	Scubapro Balanced Power Inflator	4,330
B77454	Piston Power Inflator	3,155
B75039	Power Inflator Seac Sub	2,650
UPI201	Power Inflator	1,485
UPI208	Compact Power Inflator	1,780

OVERPRESSURE VALVES

Part No.	Detail	THB
B55006	Seac Sub	900
UOV181	Aquatec	380
UOV1811	Pull Ball	45



B769

B784



UBC38



B75038



X21.600.100



UTP201



B77454



UPI201



B75039



UPI208



B55006



UOV181



UOV1811



XZ10.101



SAD02



SAD01



BS2011



XZ21.626.102



UNP01



X10.045.030 / X10.044.030



MA59



SDY_3F#1



SDY-1



BS125004



XZ06.203.548



F1000V5593



SAS-16



SAC06A



SAM-02



G Y



SAM-01



SAC06



SAM-04



XZ01.097.134



SAM-05

VALVE DUST CAP

Part No.	Detail	THB
XZ10.101.211	DIN	295
XZ10.101.212	INT	295
SAD01	Rubber Cap	80
SAD02	Plastic Cap	90
BS2011	DIN Protection Cap	485

INFLATOR NIPPLE

Part No.	Detail	THB
XZ21.626.102	Retainer	317
UNP01	Nipple for Standard Inflator	175

SCHRADER VALVE

Part No.	Detail	THB
MA59	Schrader Valve for Most inflators	30

DIN CONVERSION KIT

Part No.	Detail	THB
X10.045.030	DIN Conversion Kit Universal	1,695
X10.044.030	DIN Conversion Kit MK2	1,835

DIN ADAPTOR

Part No.	Detail	THB
SDY-1	DIN Adaptor Saekodive	1,746
SDY-3F#1	Yoke Screw For DIN Adapter	374

SWIVEL

Part No.	Detail	THB
BS125004	Swivel w. O-Rings	245
SAS-16	Swivel - 360°	1,570
XZ06.203.548	Swivel w. O-Rings, Uwatec	381
F1000V5593	High Pressure Swivel	360

OCTOPUS HOLDER

Available colours: Yellow & Green

Part No.	Detail	THB
SAM-01	Octopus Holder	145
SAM-02	Round Octopus Holder	145
SAC06	Magnetic Octopus Holder	775
SAC06A	Non-Magnetic Octopus Holder	660

OCTOPUS RETAINER

Part No.	Detail	THB
XZ01.097.134	Octopus Retainer	405

MOUTHPIECE HOLDER

Part No.	Detail	THB
SAM-040	For Regulator, Yellow	110
SAM-050	For Comfi-Bite, Orange	110



LOW PRESSURE HOSES

Part No.	Detail	THB
SAH-03-K-75	Regulator hose 75cm	590
SAH-03-K-95	Octopus hose 95cm	590
SAH-03-Y-95	Octopus hose 95cm, Yellow	590
SAH-03-K-210	Regulator hose 210cm	979
SAH-04-K-65	LP Inflator hose 65cm	590
ULP250-02	LP Inflator hose for AIR2 64cm	768
XZ01.310.026	Scubapro hose 2nd Stage, 65cm	1,688
XZ01.309.035	Scubapro hose 2nd Stage 75cm	1,887
XZ01.310.040	Scubapro Octopus hose, 100cm	1,986



Low Pressure Hose



High Pressure Hose

HIGH PRESSURE HOSES

Part No.	Detail	THB
BS125001	HP hose Seac Sub 80cm	2,708
MHPH	HP hose 33"(Made in USA)	1,290
MHPH6	HP hose 6" (Made in USA)	1,009
X01.044.031	Scubapro hose 80cm	2,483



S4004



M20070-07



XZ11029



SAH02

HOSE PROTECTORS

Part No.	Detail	THB
SAH02	Plastic Hose Wrap	94
XZ11029	Scubapro (Black, Green, Yellow)	148
M20070-07	Deep Blue (Yellow, Black)	45
S4004	Hose Protectors (Black, Blue, Green, Yellow)	46

COMPLETE INFLATOR SYSTEM

Part No.	Detail	THB
B75040	Complete Inflator System Seac	5,265



B75040

CORRUGATED HOSES

Part No.	Detail	THB
B75020	Corrugated Hose	1,485
X01.030.118	Scubapro Classic 11"	850
X01.030.113	S-Tek, Propak, Accent 14"	850
X01.030.114	Scubapro Tradewind 16"	850
X01.030.117	Scubapro Glide 500/1000 Slim	850



B75020



X01.030.114



X01.030.113



X01.030.117



X01.030.118



MOUTHPIECE

Part No.	Detail	THB
S1163S	Silicone with bridge (Clear)	170
S1163KS	Silicone with bridge (Black)	170
S1463S	Silicone with dots (Clear)	125
S1463KS	Silicone with dots (Black)	125
S1563S	Long Bite Silicone (Clear)	190
S1563KS	Long Bite Silicone (Black)	190
S1063	Rubber Mouthpiece	85
S1363S	Small Silicone Mouthpiece	125
S1663KS-Y	Silicone Black/Yellow	210
S1663KS-O	Silicone Black/Orange	210
S1763	Reshapeable Mouthpiece - Black/Clear	595
XZ01.040.051	Mouthpiece Clip Set	610
XZ01.040.141	Mouthpiece Black Silicone	505
XZ01.040.025	Reusable Clip	180



SNORKEL MOUTHPIECE

Part No.	Detail	THB
S1052MS	Silicone	155
S1052MP	PVC	60
S1052MR	Rubber	90
S1055	Snorkel Valve for 1155	20
S056S+P2C+P2S	Snorkel Base & Mouthpiece Silicone	275
S1156MS	Silicone for 1156	240
S1156MP	PVC for 1156	70



SLATE

Part No.	Detail	THB
M21001	Fish Card - Fish & Nudibranchs	250
M21002	Fish Card - Fish & Corals	250



LIQUIDS & CLEANERS

Part No.	Detail	THB
TLP911	Sink the Stink 1 unit	140
TLP91	Sink the Stink 25 per bag	3,332
TLP42	Equipment Wash	390
TLP40	Wetsuit Cleaner	265
TLP84	Dive Slate Cleaner	305
TLP75	New mask cleaner 1oz	320
TLP95	Mustache Mask Sealer	425
TFA20	Ear Drops	380

LUBRICANTS

Part No.	Detail	THB
TSA66	Silicone grease 16oz	2,975
SAS01	Silicone Grease 2oz	320
TNT60	Nitrox Lube 1/4oz	485
TLP21	Silicone Container 1/4oz	190
TLP25	Zipper Lube Stick	200
TLP27	Silicone Pump 8oz	470
TNT72	Christo Lube 2oz	2,095
SAS03-1	Silicone Lube Container 1/20z	115
TNT79	Valve Sil. & Sealant Container 20z	595

ANTI SEIZE

Part No.	Detail	THB
V629 044.3	ASO40P - 120gr Plastic	1,500

DEFOG

Part No.	Detail	THB
TLP82	Defog 8oz	505
TLP81	Defog 2oz	230
TLP80	Silicone defog spray 2oz	360
TLP85	Fog off	350
TLP89	TR17 Anti-fog	265
TLP72	Fogshield Anti-Fog Spay	510

MARKER

Part No.	Detail	THB
TPA60	Brite Mark Paint Marker	370

TANK KEY RING

Part No.	Detail	THB
SAD07	Tank Key Ring	355
SAD08	Alu Tank w. Brass Pick & O-rings	415

VELCRO BAND

Part No.	Detail	THB
TDA69	Velcro band with Dive Flag	280

RING STAINLESS

Part No.	Detail	THB
SAR-0-2	Key Ring Stainless Steel	25





TD601



TD602



TD603



TD604



TFA64



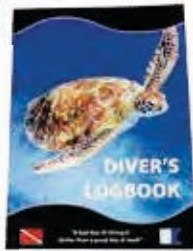
B K Y



DBS9020



DBS9010



DBS9011



O-RING KIT "TRIDENT"

Part No.	Detail	THB
TD601	Mini O-ring kit 10 pc	85
TD602	"Save a Dive" 40pcs. + Silicone	479
TD603	Mini Viton Kit 10pcs	333
TD604	Viton O-ring kit 20pcs	596

RESCUE TAPE

Available colours: Black

Part No.	Detail	THB
TFA64	1" Rescue Tape	725

HANGER

Part No.	Detail	THB
SAH06	Saekodive Universal Hanger	362

LOGBOOK

Part No.	Detail	THB
DBS9020	Log Pages for All Standard Binders	100
DBS9010	Divers Log Book 15cm x 12cm	100
DBS9011	Divers Log Book 14.5cm x 20.5cm	190

LOGBINDER

Part No.	Detail	THB
DB8005	"DIVE LOG"	555
DB8005-C	Add Your Custom Logo	555
DB8006	"DIVE NOW..."	555
DB8007	"BORN TO DIVE"	555



TDA02-72



TDA94-24

EYEGLASS HOLDER STRAP

Part No.	Detail	THB
TDA93-1	1pc. - B, G, K, Y	195
TDA94-24	Display w. 24 straps	4,102

NECK LATEX EYEWEAR STRAP

Part No.	Detail	THB
TDA03-1	1pc. - K, O, P, Y	174
TDA03-6	6pc. - K, O, P, Y	990
TDA02-72	Display w. 72 straps	11,592



CPR RESCUE

Part No.	Detail	THB
SAR10	CPR Rescue Mask	498



SAR10

CPR POCKET

CPR pocket size Resuscitator mask (S) with Key ring

Part No.	Detail	THB
SAR20	CPR Pocket	210



SAR20

NON REBREATHER MASK

This disposable mask provides oxygen for breathing divers who cannot tolerate demand valve oxygen regulators or when you have 2 divers who need emergency oxygen.

Part No.	Detail	THB
DA1015	Non Rebeather Mask	525



DA1015

LITTLE ANNE

The Little Anne manikin is a realistic, inexpensive, lightweight, adult CPR trainer that offers all the essential features. Designed with both the user & instructor in mind. Includes 2 economical, disposable airways for quick & easy cleanup & 2 removable, reusable faces.

Part No.	Detail	THB
DA1016	Little Anne	24,405



DA1016

BABY LITTLE ANNE

A low-cost, lifelike infant CPR trainer. Includes: 1 manikin, soft pack, 6 airways, 10 foreign body practice objects & directions for use.

Part No.	Detail	THB
DA1017	Baby Little Anne	20,995



DA1017

AIRWAY COMPLETE, LITTLE ANNIE

Disposable non-rebreathing airways with one-way valve are changed after each class for maximum instructor convenience and student safety.

Part No.	Detail	THB
D020300	Airway Complete, Little Annie	480



D020300



OXYGEN KIT

- 1 x OXYGEN pressure reducer HP to LP with miniature pressure Gauge
- 1 x Demand valve with connection hose LP
- 1 x Flow restrictor for high flow
- 1 x Adaptor Oxygen Bottlenose - G5/8 HP adaptor
- 1 x Pocket mask for demand valve & adaptor
- 1 x Constant flow mask with reservoir, LP hose & coupling to restrictor
- 1 x Transport bag

* Tank not included.

Part No.	Detail	THB
MO2KIT	Oxygen Kit	39,780



MR217P52

MR217P42

MAXO2®+A OXYGEN ANALYZER

- ▶ MaxO2®+A Oxygen Analyzer (Incl. Sensor & OxyKnob)
- ▶ Comfortable handheld design
- ▶ Impact resistant & drip proof
- ▶ Large LCD with 3 digit display
- ▶ Long battery life (Approx. 5,000hrs)

Part No.	Detail	THB
MR217P42	MaxO2®+A Oxygen Analyzer (Internal Sensor)	19,869
MR217P52	MaxO2®+AE Oxygen Analyzer (External Sensor)	24,669



MR125P01-011

MR125P03-004

MR207P17

MAX™-250+ OXYGEN SENSOR for MAXO2®

Part No.	Detail	THB
MR125P01-011	Oxygen Sensor for MaxO2®+A	5,279
MR125P03-004	Oxygen Sensor for MaxO2®+AE	5,279



MRP11P28

MR218P19

MAX O2 ACCESSORIES

Part No.	Detail	THB
MRP11P28	BC Adapter Maxtec	1,920
MR218P19	OxyKnob	949
MR207P17	Barbed Adapter w. Tubing	538

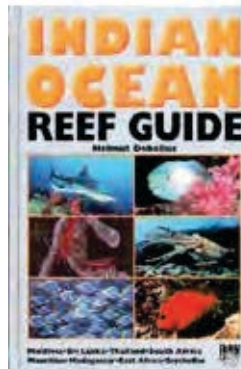


K1106 GERMAN, K1105 ENGLISH

INDIAN OCEAN REEF GUIDE

By Helmut Debelius

**Maldives - Sri Lanka - Thailand
South Africa - Mauritius
Madagascar - East Africa - Seychelles**



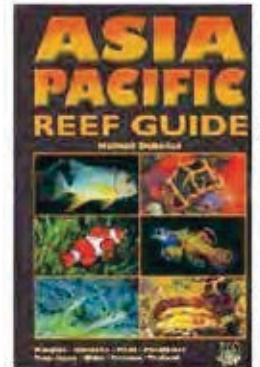
The author made his first dives in tropical waters around Sri Lanka 25 years ago. Since then he explored the whole Indian Ocean with his camera, diving not only in the tourist centers like the Maldives or Seychelles, but also taking UW-Photos at remote islands like Cocos-Keeling in the East or Aldabra in the West. The results are shown in this book including more than 1,000 photos from the natural habitat of the marine animals. Special emphasis was given to rare species like sharks & rays.

K1125 ENGLISH

ASIA PACIFIC REEF GUIDE

By Helmut Debelius

**Malaysia - Indonesia - Palau
Philippines - Trop. Japan
China - Vietnam - Thailand**



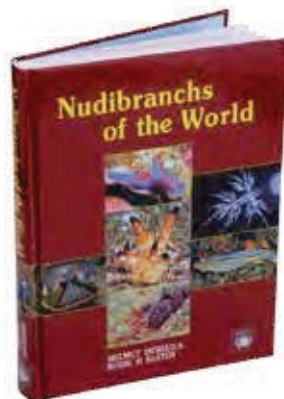
Today the coral reefs of South East Asia harbour the greatest species diversity of all Oceans. This is true not only for fishes but also for invertebrates because the species from the coral world radiated from the triangle of the Philippines, Malaysia & Indonesia. 20,000 Islands & innumerable coral reefs are located in the region where still many new species are discovered. This book focuses on the coastal fauna which most divers & snorkellers see first.

K1117 ENGLISH

NUDIBRANCHS OF THE WORLD

By Helmut Debelius, Rudie H. Kuiter

Nudibranchs come in an amazing array of colours & shapes. Many species are eye-catching while on the other hand some mimic other creatures so well that their discovery is often accidental. Their brilliant colours serve as a warning for potential predators, indicating bad taste or possible poisons, but there are some species that don't have these properties but take advantage by simply looking like they do.



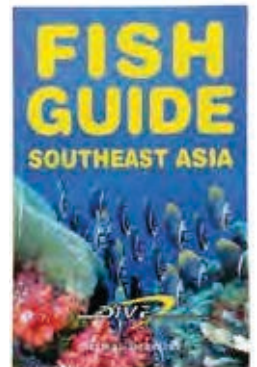
K1131 ENGLISH

FISH GUIDE SOUTH EAST ASIA

By Helmut Debelius

From Maldives to the Philippines

Indo-Pacific fish, especially those living in the coral reef of Southeast Asia, comprise the world's greatest variety of species. This book features more than 800 coloured photographs providing divers, aquarists & tourists with a perfect overview of all the ocean fish encountered in the reefs & open waters off the islands & coastlines of Thailand, Burma, Malaysia, Indonesia & the Philippines. This is the most compact fish guide ever published that has been strictly illustrated with underwater photographs.



K1121 ENGLISH

SEAHORSES & THEIR RELATIVES

By Rudie H Kuiter

This book is the most comprehensive publication of Seahorses & their relatives ever published.

Includes:

- Over 1,200 spectacular photographs
- All the known living seahorses illustrated together for the first time ... about 80 species
- A single full index of common names & scientific names



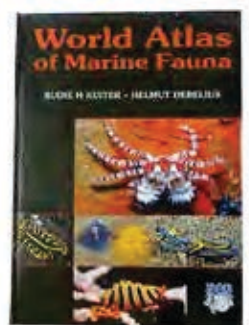
K1137 ENGLISH

WORLD ATLAS OF MARINE FAUNA

By Rudie H Kuiter & Helmut Debelius

World Atlas of Marine Fauna magnificently exhibits the diversity and beauty of sea life. It is the most comprehensive guide to these sub-sea species available.

This book is the natural companion volume to World Atlas of Marine Fishes. With the addition of Nudibranchs of the World and Seahorses and their Relatives, World Atlas of Marine Fauna completes the set of identification books from Helmut Debelius and Rudie H Kuiter, unrivalled in any other publication.



DIVE **S U P P L Y**

***19 Years Serving
the Diving
Industry Since 1994***





WINNER SUUNTO PHOTOGRAPHIC COMPETITION 2013

Dive Supply Co.,Ltd.

88/5 Moo10 Patak Road, Chalong Bay

Muang Phuket, 83130 Thailand

Tel: 076 383 414-6 Fax: 076 281 525

Email: sales@divesupply.com

Website: www.divesupply.com

Please note there may be slight variations in actual products and colors presented throughout this catalogue.

Dive Supply reserves the right to modify any product shown in this catalogue without prior notice.

PRICES ARE SUBJECT TO CHANGE WITHOUT PRIOR NOTICE!