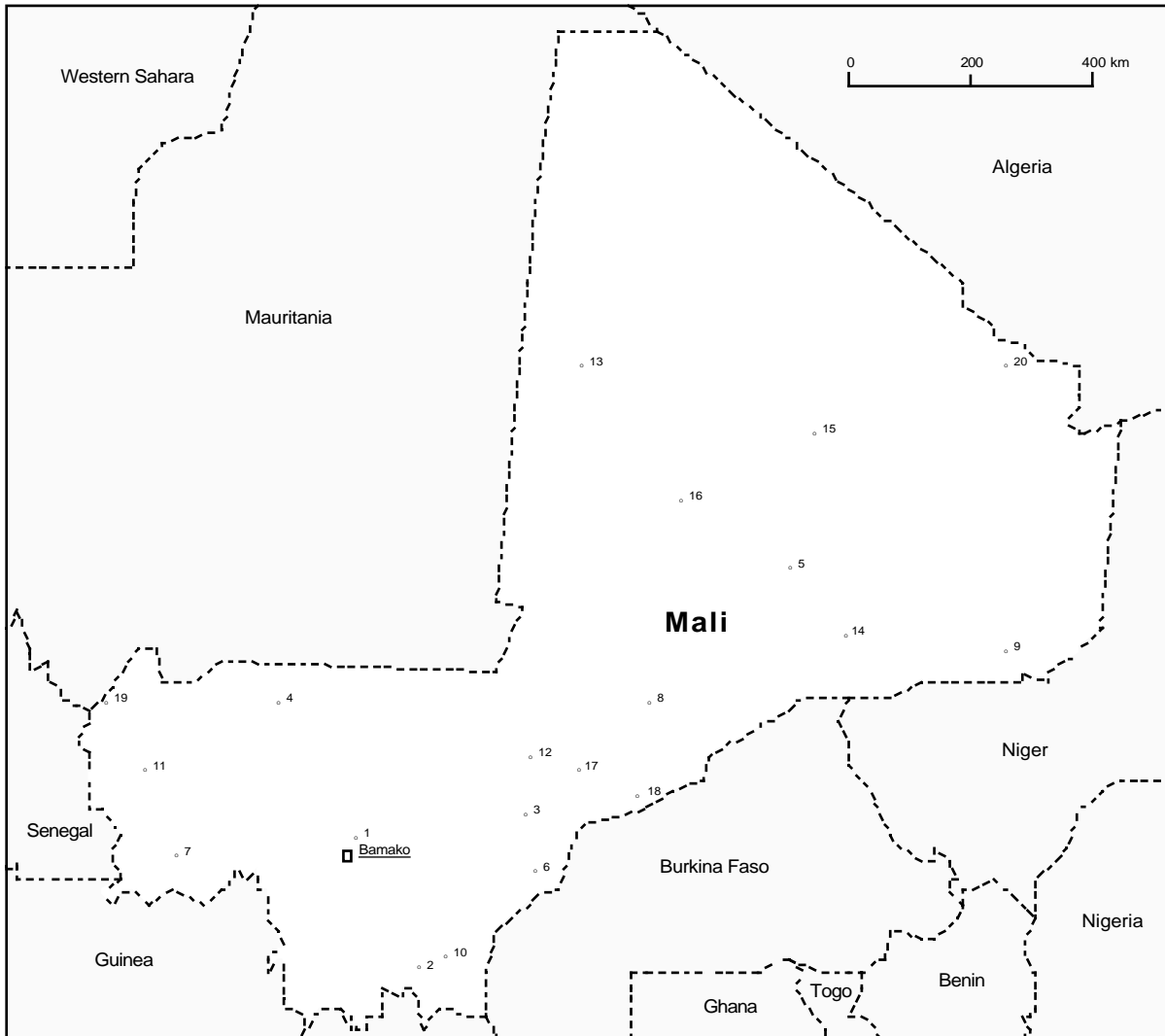


# MALI

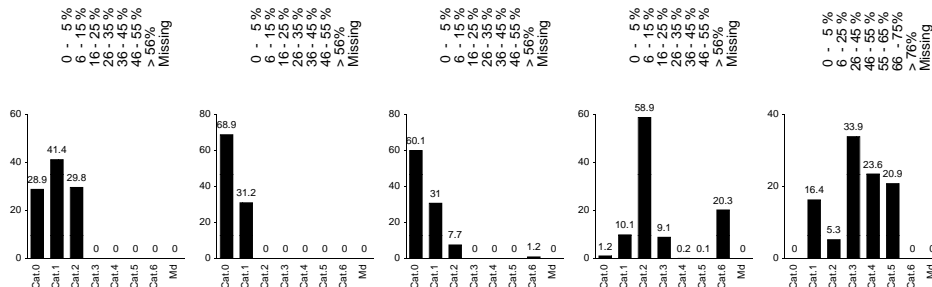
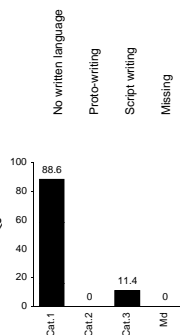
Surface (sqkm):	1240190
Population 1965 / 1990 (000):	4790   8500
Population density 1965 / 1990 (per sqkm):	39   69
Population per sqkm of agricultural land 1965:	15
Average annual population change 1965-1980 (percent):	2.1
Average annual population change 1980-1989 (percent):	2.5

Population 1960 UN / estimated (000):	4100   4200
Number of identified cultural units	20
Population 1960 identified / coded (percent):	100   100

Geographical location of the cultural units presented in the following tables.  
 (The numbers refer to ID-Nr.)



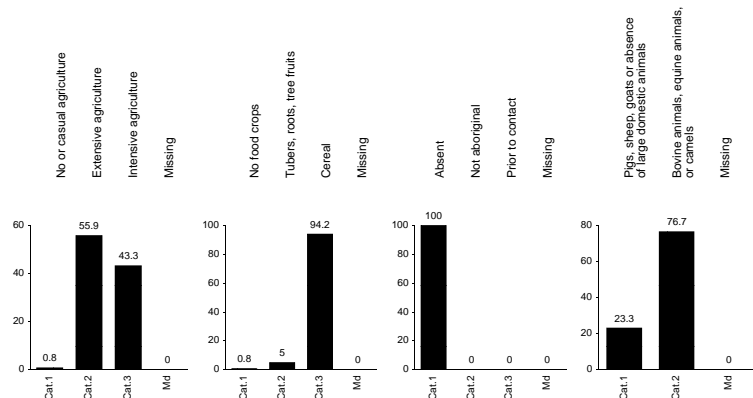
Niger-Congo: Mande 50.9%  
 Niger-Congo: Gur 21.1%  
 Niger-Congo: West Atlantic 14.3%  
 Isolated 7.2%  
 Afro-Asiatic: Berber 4.9%  
 Afro-Asiatic: Semitic 1.4%



ID-Nr.	NAME OF CULTURAL UNIT	POPULATION (000)	POPULATION (%)	LANGUAGE FAMILY	WRITTEN LANGUAGE
					<b>M A R</b>
1	Bambara	1000	24.0	Niger-Congo: Mande	1
2	Minianka	600	14.4	Niger-Congo: Gur	1
3	Fulbe	585	14.1	Niger-Congo: West Atlantic	1
4	Soninke	550	13.2	Niger-Congo: Mande	1
5	Songhai	300	7.2	Isolated	1
6	Diula	200	4.8	Niger-Congo: Mande	3
7	Malinke	200	4.8	Niger-Congo: Mande	1
8	Dogon	180	4.3	Niger-Congo: Gur	1
9	Aullimind-Tuareg	150	3.6	Afro-Asiatic: Berber	3
10	Bobo	100	2.4	Niger-Congo: Gur	1
11	Kasonke	80	1.9	Niger-Congo: Mande	1
12	Bozo	50	1.2	Niger-Congo: Mande	1
13	Berabish-Maures	35	0.8	Afro-Asiatic: Semitic	3
14	Udalan-Tuareg	29	0.7	Afro-Asiatic: Berber	3
15	Kunta-Maures	25	0.6	Afro-Asiatic: Semitic	3
16	Antessar-Tuareg	20	0.5	Afro-Asiatic: Berber	3
17	Nono	20	0.5	Niger-Congo: Mande	1
18	Samo	20	0.5	Niger-Congo: Mande	1
19	Tukolor	10	0.2	Niger-Congo: West Atlantic	3
20	Ifora-Tuareg	6	0.1	Afro-Asiatic: Berber	3

GATHERING		HUNTING		FISHING		ANIMAL HUSBANDRY		AGRICULTURE	
M	A	M	A	M	A	M	A	M	A
2	2	0	0	1	1	2	2	5	3
1	1	1	1	0	0	2	2	6	4
0	0	0	0	0	0	8	6	2	1
1	1	0	0	0	0	2	2	7	5
0	0	0	0	2	2	3	3	5	3
1	1	1	1	0	0	1	1	7	5
1	1	1	1	1	1	1	1	6	4
2	2	0	0	0	0	2	2	6	4
0	0	1	1	0	0	6	6	3	2
0	0	1	1	0	0	2	2	7	5
1	1	0	0	1	1	3	3	5	3
1	1	0	0	6	6	0	0	3	2
0	0	0	0	0	0	9	6	1	1
2	2	0	0	0	0	2	6	6	2
2	2	0	0	0	0	6	6	2	1
0	0	1	1	0	0	6	6	3	2
1	1	0	0	2	2	2	2	5	3
1	1	1	1	0	0	1	1	7	5
0	0	0	0	1	1	4	4	5	3
2	2	1	1	0	0	5	5	2	1

Mali (5)



INTENSITY OF CULTIVATION

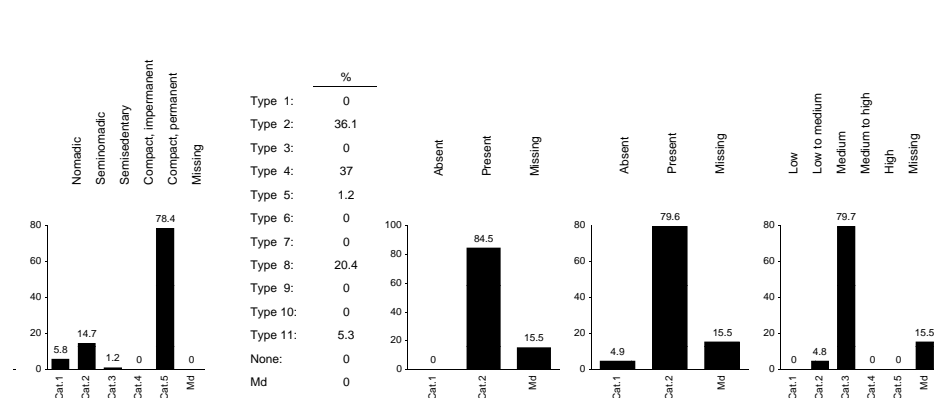
MAJOR CROP TYPE

ANIMALS AND FLOW CULTIVATION

PREDOMINANT TYPE OF ANIMAL HUSBANDRY

	M	A	R	M	A	R	M	A	R	M	A	R
1 Bambara	5	5	3	6	6	3	1	1	1	7	7	2
2 Minianka	3	3	2	6	6	3	1	1	1	3	3	1
3 Fulbe	3	3	2	6	6	3	1	1	1	7	7	2
4 Soninke	3	3	2	6	6	3	1	1	1	7	7	2
5 Songhai	5	5	3	6	6	3	1	1	1	7	7	2
6 Diula	3	3	2	5	5	2	1	1	1	3	3	1
7 Malinke	3	3	2	6	6	3	1	1	1	7	7	2
8 Dogon	5	5	3	6	6	3	1	1	1	7	7	2
9 Aullimind-Tuareg	•	6	3	•	6	3	•	1	1	•	6	2
10 Bobo	3	3	2	6	6	3	1	1	1	3	3	1
11 Kasonke	3	3	2	6	6	3	1	1	1	7	7	2
12 Bozo	6	6	3	6	6	3	1	1	1	1	1	1
13 Berabish-Maures	2	2	1	1	1	1	1	1	1	6	6	2
14 Udalan-Tuareg	5	5	3	6	6	3	1	1	1	6	6	2
15 Kunta-Maures	5	5	3	6	6	3	1	1	1	7	7	2
16 Antessar-Tuareg	6	6	3	6	6	3	1	1	1	6	6	2
17 Nono	5	5	3	6	6	3	1	1	1	7	7	2
18 Samo	5	5	3	6	6	3	1	1	1	3	3	1
19 Tukulor	3	3	2	6	6	3	1	1	1	7	7	2
20 Ifora-Tuareg	6	6	3	4	4	2	1	1	1	6	6	2

Mali (6)



SETTLEMENT PATTERNS

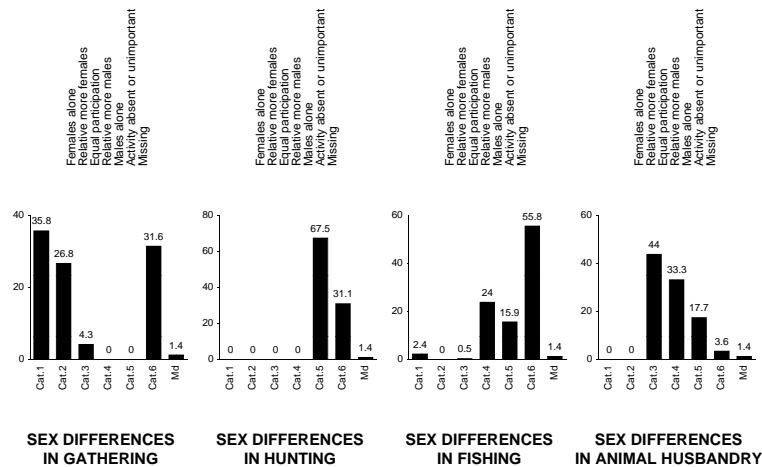
SUBSISTENCE TYPE

METAL WORKING

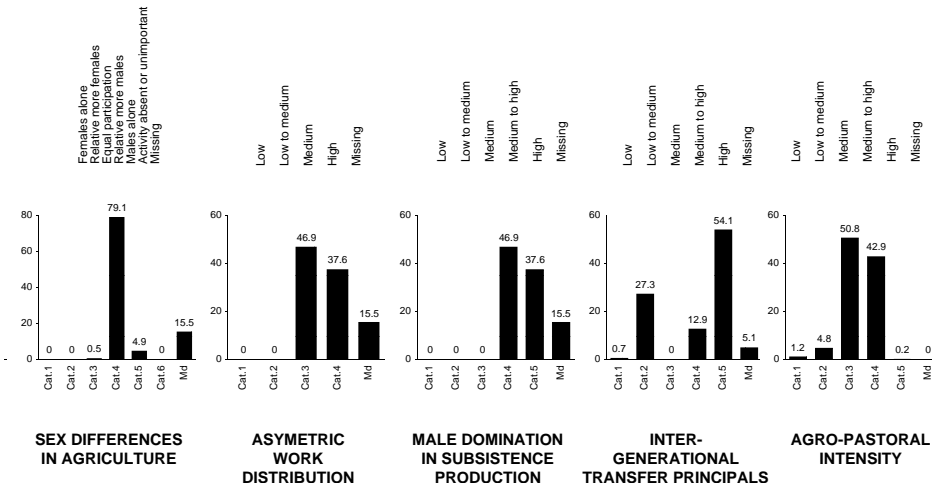
WEAVING

AGRO-TECHNICAL LEVEL

	M	A	R	M	A	R	M	A	R	M	A	R	M	A	R
1 Bambara	7	7	5	2	2	2	2	2	2	13	3	3			
2 Minianka	7	7	5	4	2	2	2	2	2	11	3	3			
3 Fulbe	3	2	2	8	•	•	•	•	•	•	•	•			
4 Soninke	7	7	5	4	2	2	2	•	2	2	12	3			
5 Songhai	7	7	5	2	2	2	2	2	2	2	13	3			
6 Diula	7	7	5	11	2	2	2	•	2	2	10	2			
7 Malinke	7	7	5	4	2	2	2	•	2	2	12	3			
8 Dogon	7	7	5	2	2	2	2	•	2	2	13	3			
9 Aullimind-Tuareg	•	1	1	8	•	2	2	•	1	1	12	3			
10 Bobo	5	5	5	4	2	2	2	•	2	2	11	3			
11 Kasonke	7	7	5	4	•	2	2	•	2	2	12	3			
12 Bozo	3	3	3	5	•	2	2	•	2	2	12	3			
13 Berabish-Maures	1	1	1	8	•	•	•	•	•	•	•	•			
14 Udalan-Tuareg	1	1	1	8	•	2	2	•	1	1	12	3			
15 Kunta-Maures	2	2	2	8	•	•	•	•	•	•	•	•			
16 Antessar-Tuareg	1	1	1	8	2	2	2	•	1	1	12	3			
17 Nono	7	7	5	11	•	2	2	•	2	2	13	3			
18 Samo	7	7	5	2	•	2	2	•	2	2	12	3			
19 Tukulor	7	7	5	4	2	2	2	2	2	2	12	3			
20 Ifora-Tuareg	1	1	1	8	2	2	2	•	1	1	11	3			

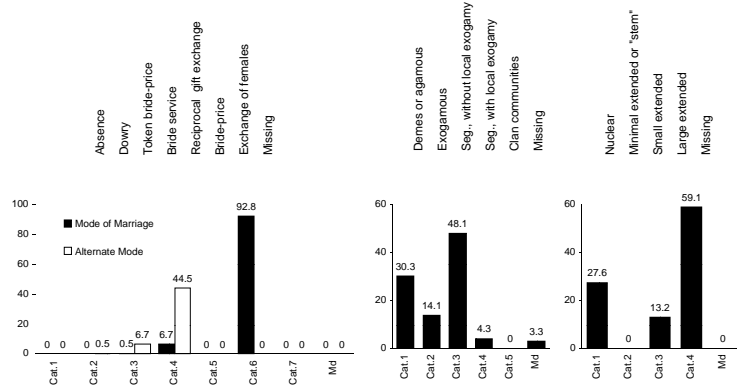


	M	A	R	M	A	R	M	A	R	M	A	R
1 Bambara	5	5	2	1	1	5	2	2	4	3	3	3
2 Minianka	•	6	1	1	1	5	•	8	6	•	2	4
3 Fulbe	8	8	6	8	8	6	8	8	6	2	2	4
4 Soninke	•	6	1	•	8	6	•	8	6	•	3	3
5 Songhai	8	8	6	1	1	5	1	1	5	•	1	5
6 Diula	•	8	6	1	1	5	8	8	6	•	2	4
7 Malinke	6	6	1	1	1	5	1	1	5	•	1	5
8 Dogon	4	4	3	1	1	5	8	8	6	1	1	5
9 Aullimind-Tuareg	•	8	6	•	1	5	•	8	6	•	3	3
10 Bobo	6	6	1	1	1	5	6	6	1	•	8	6
11 Kasonke	•	5	2	•	8	6	•	1	5	•	3	3
12 Bozo	8	8	6	8	8	6	1	1	5	8	8	6
13 Berabish-Maures	•	•	•	•	•	•	•	•	•	•	•	•
14 Udalan-Tuareg	•	5	2	•	8	6	•	8	6	•	3	3
15 Kunta-Maures	•	•	•	•	•	•	•	•	•	•	•	•
16 Antessar-Tuareg	•	8	6	1	1	5	8	8	6	1	1	5
17 Nono	•	6	1	•	1	5	•	1	5	•	3	3
18 Samo	•	6	1	•	1	5	•	4	3	•	1	5
19 Tukolor	•	8	6	1	1	5	1	1	5	1	1	5
20 Ifora-Tuareg	•	5	2	1	1	5	8	8	6	1	1	5



	M	A	R	M	A	R	M	A	R	M	A	R	M	A	R
2 2	2	2	4	3	4	4	12	5	18	3	3	3	18	3	3
2 2	2	2	4	4	5	5	12	5	21	3	3	3	21	3	3
• •	•	•	•	•	•	•	9	2	27	4	4	4	27	4	4
2 2	2	2	4	3	4	4	8	2	24	4	4	4	24	4	4
2 2	2	2	4	4	5	5	11	4	24	4	4	4	24	4	4
2 2	2	2	4	4	5	5	11	4	16	3	3	3	16	3	3
2 2	2	2	4	4	5	5	12	5	14	2	2	2	14	2	2
2 2	2	2	4	4	5	5	12	5	21	3	3	3	21	3	3
• 1	•	1	5	3	4	4	•	•	28	4	4	4	28	4	4
2 2	2	2	4	3	4	4	12	5	24	4	4	4	24	4	4
• 2	•	2	4	3	4	4	12	5	24	4	4	4	24	4	4
2 2	2	2	4	4	5	5	12	5	4	1	1	1	4	1	1
• •	•	•	•	•	•	•	•	•	20	3	3	3	20	3	3
• 1	•	1	5	3	4	4	4	1	21	3	3	3	21	3	3
• •	•	•	•	•	•	•	11	4	21	3	3	3	21	3	3
• 1	•	1	5	4	5	5	•	•	28	4	4	4	28	4	4
• 2	•	2	4	3	4	4	12	5	18	3	3	3	18	3	3
• 3	•	3	3	3	4	4	12	5	16	3	3	3	16	3	3
2 2	2	2	4	4	5	5	11	4	30	5	5	5	30	5	5
• 1	•	1	5	4	5	5	•	•	18	3	3	3	18	3	3

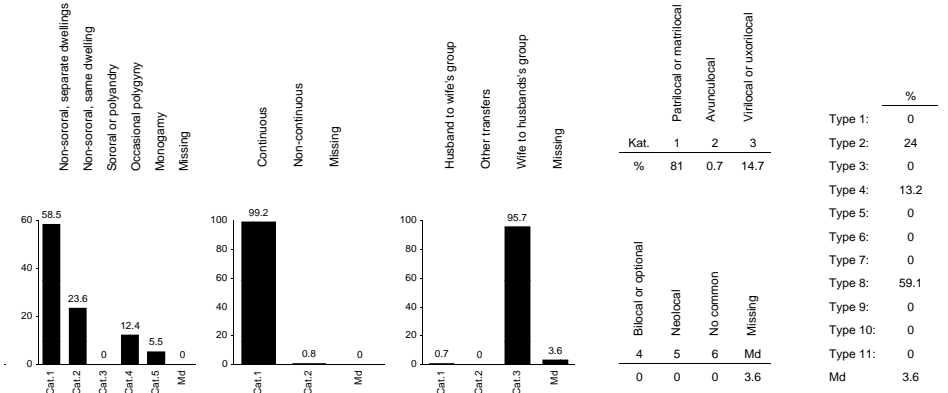
Mali (9)



MODE OF MARRIAGE      ALTERNATE MODE OF MARRIAGE      COMMUNITY MARRIAGE ORGANIZATION      FAMILY ORGANIZATION

	M	A	R	M	A	R	M	A	R	M	A	R
1 Bambara	1	1	6	2	2	4	2	2	3	4	4	4
2 Minianka	1	1	6	2	2	4	2	2	3	4	4	4
3 Fulbe	1	1	6	8	8	8	4	4	2	1	1	1
4 Soninke	1	1	6	8	8	8	3	3	1	3	3	3
5 Songhai	1	1	6	8	8	8	3	3	1	1	1	1
6 Diula	1	1	6	8	8	8	2	2	3	4	4	4
7 Malinke	1	1	6	2	2	4	3	3	1	4	4	4
8 Dogon	2	2	4	3	3	3	5	5	4	4	4	4
9 Aullimind-Tuareg	1	1	6	8	8	8	3	3	1	1	1	1
10 Bobo	2	2	4	3	3	3	2	2	3	4	4	4
11 Kasonke	1	1	6	8	8	8	•	•	•	4	4	4
12 Bozo	1	1	6	2	2	4	•	•	•	4	4	4
13 Berabish-Maures	1	1	6	8	8	8	2	2	3	1	1	1
14 Udalan-Tuareg	1	1	6	8	8	8	3	3	1	1	1	1
15 Kunta-Maures	1	1	6	8	8	8	2	2	3	1	1	1
16 Antessar-Tuareg	1	1	6	7	7	2	3	3	1	1	1	1
17 Nono	1	1	6	8	8	8	2	2	3	4	4	4
18 Samo	3	3	3	8	8	8	2	2	3	4	4	4
19 Tukolor	1	1	6	8	8	8	•	•	•	4	4	4
20 Ifora-Tuareg	1	1	6	8	8	8	•	•	•	1	1	1

Mali (10)



MARITAL COMPOSITION      CONTINUITY OF MARITAL RESIDENCE WITH KIN      TRANSFER OF RESIDENCE AT MARRIAGE      MARITAL RESIDENCE WITH KIN      FAMILY TYPE

	M	A	R	M	A	R	M	A	R	M	A	R	M	A	R	M	A	R
1 Bambara	5	5	1	4	1	1	1	1	3	1	1	8						
2 Minianka	6	6	2	4	1	1	1	1	3	1	1	8						
3 Fulbe	5	5	1	4	1	1	1	1	3	3	3	2						
4 Soninke	5	5	1	4	1	1	1	1	3	1	1	4						
5 Songhai	2	2	4	4	1	1	1	1	3	1	1	2						
6 Diula	6	6	2	4	1	1	1	1	3	1	1	8						
7 Malinke	5	5	1	4	1	1	1	1	3	1	1	8						
8 Dogon	2	2	4	4	1	1	1	1	3	1	1	8						
9 Aullimind-Tuareg	1	1	5	4	1	1	•	•	•	•	•	•						
10 Bobo	5	5	1	4	1	1	1	1	3	1	1	8						
11 Kasonke	6	6	2	4	1	1	1	1	3	1	1	8						
12 Bozo	6	6	2	4	1	1	1	1	3	1	1	8						
13 Berabish-Maures	2	2	4	4	1	1	1	1	3	1	1	2						
14 Udalan-Tuareg	1	1	5	1	1	2	3	3	1	2	2	2						
15 Kunta-Maures	1	1	5	4	1	1	1	1	3	1	1	2						
16 Antessar-Tuareg	1	1	5	4	1	1	1	1	3	3	3	2						
17 Nono	6	6	2	4	1	1	1	1	3	1	1	8						
18 Samo	6	6	2	4	1	1	1	1	3	1	1	8						
19 Tukolor	6	6	2	4	1	1	1	1	3	1	1	8						
20 Ifora-Tuareg	1	1	5	3	3	2	1	1	3	3	3	2						

	Kat.			%
	1	2	3	
Type 1:	0	0	0	0
Type 2:	24	0	0	24
Type 3:	0	0	0	0
Type 4:	13.2	0	0	13.2
Type 5:	0	0	0	0
Type 6:	0	0	0	0
Type 7:	0	0	0	0
Type 8:	59.1	0	0	59.1
Type 9:	0	0	0	0
Type 10:	0	0	0	0
Type 11:	0	0	0	0
Md	3.6	0	0	3.6

Mali (11)

Kat.	1	2	3
%	32.1	0	30.5

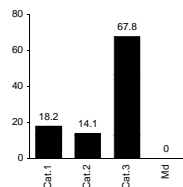
Kat.	1	2	3
%	85.5	0	0.5

Kat.	1	2	3
%	0	14.1	0

Sibs	Phratric	Moieties	Missing
4	5	6	Md
36.4	0.8	0	0.1

Sibs	Phratric	Moieties	Missing
4	5	6	Md
13.9	0	0	0.1

Ramages	Quasi-lineages	None	Missing
4	5	6	Md
0	0	85.5	0.5



LARGEST PATRILINEAL KIN GROUP

LARGEST MATRILINEAL KIN GROUP

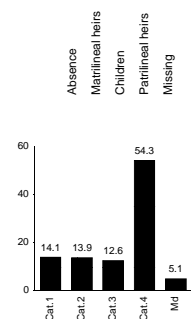
COGNATIC KIN GROUPS

DESCENT (MAJOR TYPE)

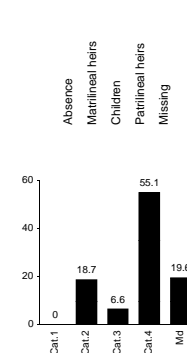
	M	A	R	M	A	R	M	A	R	M	A	R
1 Bambara	4	4		1	1		6	6		1	1	3
2 Minianka	3	3		1	1		6	6		1	1	3
3 Fulbe	1	1		1	1		1	1		6	6	2
4 Soninke	4	1		1	4		6	6		1	3	1
5 Songhai	3	3		1	1		6	6		1	1	3
6 Diula	4	4		1	1		6	6		1	1	3
7 Malinke	4	4		1	1		6	6		1	1	3
8 Dogon	3	3		1	1		6	6		1	1	3
9 Aullimind-Tuareg		1		1	1		6	6		3	1	
10 Bobo	3	3		1	1		6	6		1	1	3
11 Kasonke	4	4		1	1		6	6		1	1	3
12 Bozo	3	3		1	1		6	6		1	1	3
13 Berabish-Maures	5	5		1	1		6	6		1	1	3
14 Udalan-Tuareg	1	1		4	4		6	6		3	3	1
15 Kunta-Maures	4	4		1	1		6	6		1	1	3
16 Antessar-Tuareg	1	1		3	3		6	6		3	3	1
17 Nono		3			1					1	1	3
18 Samo	3	3		1	1		6	6		1	1	3
19 Tukolor	4	4		1	1		6	6		1	1	3
20 Ifora-Tuareg							6	6		3	1	

Mali (12)

Type 1:	66.5
Type 2:	0.8
Type 3:	14.4
Type 4:	0
Type 5:	14.1
Type 6:	0
Type 7:	0
Type 8:	0
None:	4.2
Md	0



Kat.	1	2	3
%	53.3	0	0



Kat.	1	2	3
%	47	0	0

KIN TYPE

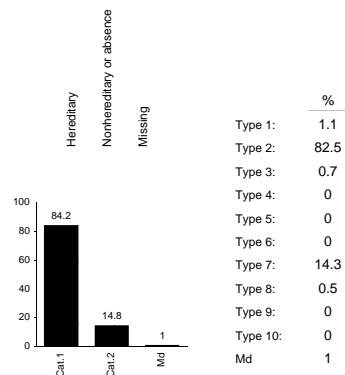
INHERITANCE RULE FOR LAND

INHERITANCE DISTRIBUTION FOR LAND

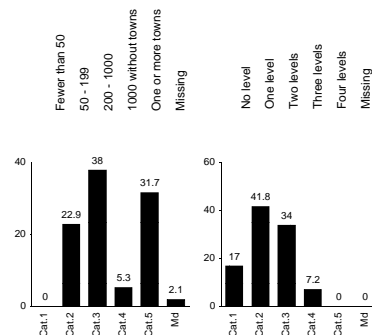
INHERITANCE RULE FOR MOVABLE PROPERTY

INHERITANCE DISTRIBUTION FOR MOVABLE PROPERTY

	M	A	R	M	A	R	M	A	R	M	A	R	M	A	R	
1	1	6	6	4			•	4		•	6	4			•	4
1	1	6	6	4			•	1		•	6	4			•	1
5	1	1	1	1			•	•		•	•	•			•	•
3	1	7	2	2			1	1		7	2	2			1	1
1	1	4	4	3			•	1		7	7	4			1	1
1	1	4	4	3			•	1		•	4	3			•	1
1	1	6	6	4			1	1		2	2	2			4	4
1	1	6	6	4			1	1		7	7	4			1	1
0		•	•	•			•	•		•	•	•			•	•
1	1	6	6	4			•	4		7	7	4			4	4
1	1	6	6	4			•	1		•	•	•			•	•
1	1	6	6	4			•	1		•	6	4			•	1
2	1	•	•	•			1	1		5	5	3			1	1
3	1	2	2	2			4	4		7	7	4			4	4
1	1	4	4	3			•	•		7	7	4			•	•
3	1	•	•	•			4	4		3	3	2			4	4
0	1	6	6	4			1	1		4	4	3			1	1
1	1	6	6	4			•	•		•	5	3			•	1
1	1	7	7	4			4	4		7	7	4			4	4
0	1	•	•	•			•	•		3	3	2			4	4



Type	%
Type 1:	1.1
Type 2:	82.5
Type 3:	0.7
Type 4:	0
Type 5:	0
Type 6:	0
Type 7:	14.3
Type 8:	0.5
Type 9:	0
Type 10:	0
Md	1



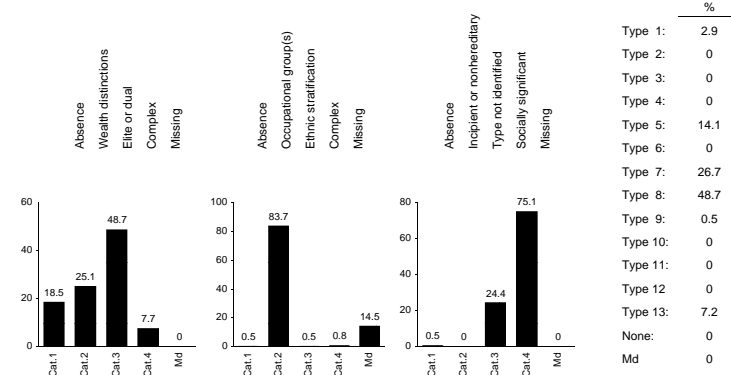
**SUCCESSION OF LOCAL HEADMAN**

**SUCCESSION OF LOCAL HEADMAN TYPE**

**MEAN SIZE OF LOCAL COMMUNITIES**

**HIERARCHY BEYOND LOCAL COMMUNITY**

	M	A	R	M	A	R	M	A	R	M	A	R
1 Bambara	1	1	1	2	7	7	5	2	2	2	2	
2 Minianka	1	1	1	2	•	5	3	3	3	3	3	
3 Fulbe	5	5	2	7	2	2	2	1	1	1	1	
4 Soninke	•	1	1	2	•	4	3	3	3	3	3	
5 Songhai	1	1	1	2	7	7	5	4	4	4	4	
6 Diula	•	1	1	2	•	5	3	2	2	2	2	
7 Malinke	1	1	1	2	•	6	4	2	2	2	2	
8 Dogon	1	1	1	2	3	3	2	2	2	2	2	
9 Aullimind-Tuareg	1	1	1	2	•	2	2	•	3	3	3	
10 Bobo	1	1	1	2	4	4	3	1	1	1	1	
11 Kasonke	•	1	1	2	•	4	3	3	3	3	3	
12 Bozo	•	1	1	2	•	4	3	2	2	2	2	
13 Berabish-Maures	•	•	•	•	•	•	•	2	2	2	2	
14 Udalan-Tuareg	2	2	1	3	•	•	•	3	3	3	3	
15 Kunta-Maures	1	1	1	1	•	•	•	2	2	2	2	
16 Antessar-Tuareg	6	6	2	8	•	2	2	2	2	2	2	
17 Nono	•	1	1	2	7	7	5	2	2	2	2	
18 Samo	•	1	1	1	6	6	4	1	1	1	1	
19 Tukulor	5	5	2	7	•	2	2	2	2	2	2	
20 Ifora-Tuareg	•	•	•	•	•	2	2	3	3	3	3	



Type	%
Type 1:	2.9
Type 2:	0
Type 3:	0
Type 4:	0
Type 5:	14.1
Type 6:	0
Type 7:	26.7
Type 8:	48.7
Type 9:	0.5
Type 10:	0
Type 11:	0
Type 12:	0
Type 13:	7.2
None:	0
Md	0

**CLASS STRATIFICATION**

**CASTE STRATIFICATION**

**TYPE OF SLAVERY**

**TYPE OF POLITICAL SYSTEM**

**SOCIO-POLITICAL COMPLEXITY**

M	A	R	M	A	R	M	A	R	M	A	R	M	A	R
4	4	3	2	2	2	4	4	4	8	19	3			
1	1	1	2	2	2	4	4	4	7	16	3			
2	2	2	•	•	•	3	3	3	5	12	2			
4	4	3	2	2	2	4	4	4	8	17	3			
5	5	4	2	2	2	4	4	4	13	21	4			
2	2	2	•	2	2	3	3	3	7	17	3			
4	4	3	2	2	2	4	4	4	8	17	3			
2	2	2	2	2	2	4	4	4	7	13	2			
3	3	3	2	2	2	4	4	4	8	16	3			
1	1	1	2	2	2	3	3	3	1	12	2			
2	2	2	2	2	2	3	3	3	7	15	3			
1	1	1	2	2	2	3	3	3	7	13	2			
3	3	3	4	4	4	4	4	4	8	•	•			
3	3	3	2	2	2	•	4	4	8	•	•			
3	3	3	2	2	2	4	4	4	8	•	•			
3	3	3	3	3	3	4	4	4	8	14	2			
5	5	4	•	•	•	4	4	4	9	18	3			
•	1	1	•	1	1	•	1	1	1	13	2			
4	4	3	2	2	2	4	4	4	8	14	2			
3	3	3	2	2	2	4	4	4	8	15	3			