

**SCREENING REPORT FOR AN ENVIRONMENTAL AUTHORIZATION AS
REQUIRED BY THE 2014 EIA REGULATIONS – PROPOSED SITE
ENVIRONMENTAL SENSITIVITY**

EIA Reference number: TBC

Project name: Klawer WEF 22kV Powerline, Western Cape, South Africa

Project title: Basic Assessment Process

Date screening report generated: 11/03/2021 17:16:24

Applicant: Red Rocket South Africa (Pty) Ltd

Compiler: WSP Environmental (Pty) Ltd

Compiler signature:
.....

Application Category: Any activities within or close to a watercourse



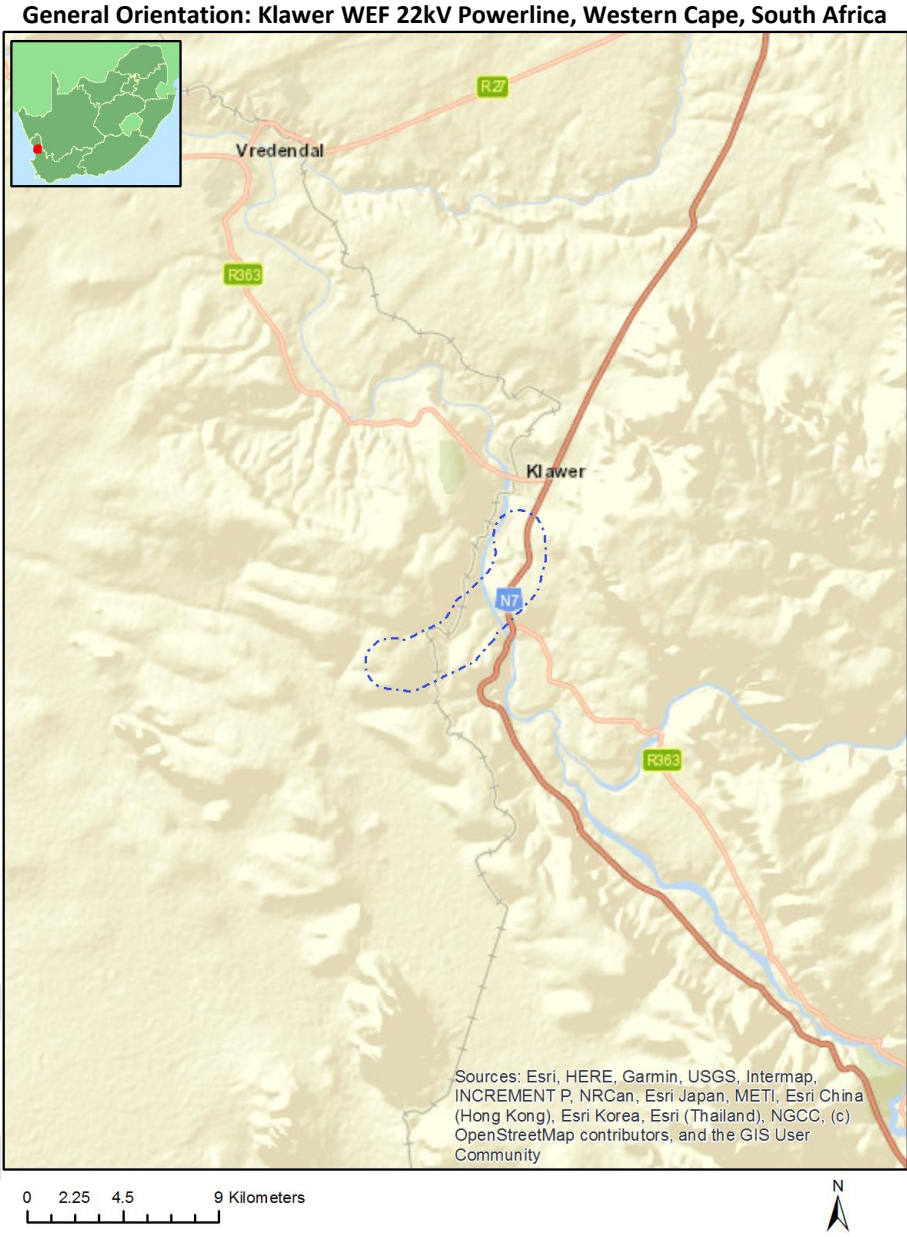
OFFICIAL

Table of Contents

Proposed Project Location	4
Orientation map 1: General location	4
Map of proposed site and relevant area(s)	5
Cadastral details of the proposed site	5
Wind and Solar developments with an approved Environmental Authorisation or applications under consideration within 30 km of the proposed area	7
Environmental Management Frameworks relevant to the application	7
Environmental screening results and assessment outcomes	7
Relevant development incentives, restrictions, exclusions or prohibitions	7
Map indicating proposed development footprint within applicable development incentive, restriction, exclusion or prohibition zones	8
Proposed Development Area Environmental Sensitivity	8
Specialist assessments identified	9
Results of the environmental sensitivity of the proposed area	11
MAP OF RELATIVE AGRICULTURE THEME SENSITIVITY	11
MAP OF RELATIVE ANIMAL SPECIES THEME SENSITIVITY	12
MAP OF RELATIVE AQUATIC BIODIVERSITY THEME SENSITIVITY	13
MAP OF RELATIVE ARCHAEOLOGICAL AND CULTURAL HERITAGE THEME SENSITIVITY	14
MAP OF RELATIVE CIVIL AVIATION THEME SENSITIVITY	15
MAP OF RELATIVE DEFENCE THEME SENSITIVITY	16
MAP OF RELATIVE PALEONTOLOGY THEME SENSITIVITY	17
MAP OF RELATIVE PLANT SPECIES THEME SENSITIVITY	18
MAP OF RELATIVE TERRESTRIAL BIODIVERSITY THEME SENSITIVITY	19

Proposed Project Location

Orientation map 1: General location



Map of proposed site and relevant area(s)



Cadastral details of the proposed site

Property details:

No	Farm Name	Farm/ Erf No	Portion	Latitude	Longitude	Property Type
1	KLAWER	159	0	31°47'22.95S	18°37'20.36E	Erven
2	MELKBOOM	384	0	31°53'9.32S	18°38'22.95E	Farm
3		472	0	31°49'31.95S	18°35'30.37E	Farm
4	RIETRYLAAGTE	508	0	31°52'10.09S	18°32'7.81E	Farm
5		306	0	31°50'4.05S	18°34'26.97E	Farm
6	WINDHOEK	449	0	31°45'44.03S	18°39'38.4E	Farm
7	CARLTON HILL	307	0	31°49'19.7S	18°37'31.91E	Farm
8	ROSSOUWS KRAAL	390	0	31°50'44.03S	18°32'59.48E	Farm
9	RIETRYLAAGTE	509	0	31°52'12.39S	18°34'38.76E	Farm
10		306	0	31°49'41.93S	18°36'57.91E	Farm
11		306	0	31°47'54.66S	18°37'16.08E	Farm
12		472	0	31°49'42.45S	18°36'27.03E	Farm
13		306	31	31°47'51.96S	18°37'22.06E	Farm Portion
14		306	104	31°47'38.84S	18°36'50.34E	Farm Portion
15		306	75	31°47'31.35S	18°37'11.19E	Farm Portion
16		306	81	31°50'3.69S	18°35'40.51E	Farm Portion
17		306	0	31°48'13.5S	18°37'54.21E	Farm Portion
18	CARLTON HILL	307	1	31°49'19.56S	18°37'42.92E	Farm Portion
19	CARLTON HILL	307	1	31°49'21.23S	18°37'43.31E	Farm Portion
20	MELKBOOM	384	141	31°50'57.77S	18°36'3.67E	Farm Portion
21	MELKBOOM	384	200	31°49'54.44S	18°37'7.82E	Farm Portion
22		306	100	31°50'11.42S	18°35'18.23E	Farm Portion
23		306	106	31°47'41.57S	18°37'15.81E	Farm Portion
24		306	137	31°47'30.66S	18°37'30.28E	Farm Portion
25		306	0	31°48'29.54S	18°37'26.63E	Farm Portion
26		306	0	31°47'58.75S	18°37'44.41E	Farm Portion
27	CARLTON HILL	307	7	31°48'57.02S	18°37'18.24E	Farm Portion
28		306	13	31°48'14.95S	18°36'57.28E	Farm Portion

29		306	16	31°47'50.35S	18°37'7.73E	Farm Portion
30		306	107	31°47'42.15S	18°37'5.76E	Farm Portion
31		306	97	31°48'49.35S	18°38'12.15E	Farm Portion
32		306	146	31°47'21.44S	18°37'0.16E	Farm Portion
33		306	161	31°48'0.59S	18°37'37.07E	Farm Portion
34		306	12	31°48'26.03S	18°36'54.46E	Farm Portion
35		306	72	31°47'53.69S	18°36'41.49E	Farm Portion
36		306	157	31°47'56.91S	18°37'25.28E	Farm Portion
37		306	121	31°49'41.93S	18°36'57.91E	Farm Portion
38	CARLTON HILL	307	0	31°49'11.15S	18°36'51.58E	Farm Portion
39	CARLTON HILL	307	1	31°49'14.44S	18°37'6.38E	Farm Portion
40	MELKBOOM	384	141	31°51'2.87S	18°36'4.33E	Farm Portion
41		306	22	31°47'47.01S	18°37'19.34E	Farm Portion
42		306	99	31°50'3.87S	18°34'23.12E	Farm Portion
43		306	164	31°48'20.76S	18°36'53.28E	Farm Portion
44	CARLTON HILL	307	6	31°49'13.54S	18°37'5.97E	Farm Portion
45	CARLTON HILL	307	9	31°49'43.87S	18°37'11.21E	Farm Portion
46		306	73	31°47'28.92S	18°37'17.97E	Farm Portion
47		306	15	31°48'0.09S	18°37'5.04E	Farm Portion
48		306	103	31°48'38.87S	18°36'17.05E	Farm Portion
49		306	105	31°48'33.09S	18°36'28.44E	Farm Portion
50		306	32	31°48'44.19S	18°36'44.45E	Farm Portion
51		306	12	31°48'22.28S	18°36'47.22E	Farm Portion
52		306	163	31°48'42.16S	18°36'47.16E	Farm Portion
53	CARLTON HILL	307	5	31°49'14.19S	18°37'6.48E	Farm Portion
54	CARLTON HILL	307	4	31°49'33.44S	18°37'8.51E	Farm Portion
55	CARLTON HILL	307	0	31°49'8.93S	18°36'53.42E	Farm Portion
56		306	14	31°48'7.74S	18°36'56.9E	Farm Portion
57		306	111	31°47'43.03S	18°37'20.88E	Farm Portion
58		306	148	31°47'33.69S	18°37'42.24E	Farm Portion
59		306	162	31°48'33.99S	18°36'59E	Farm Portion
60	CARLTON HILL	307	3	31°49'48.51S	18°37'12.28E	Farm Portion
61	CARLTON HILL	307	10	31°49'41.19S	18°37'9.02E	Farm Portion
62	MELKBOOM	384	200	31°49'59.43S	18°37'18.16E	Farm Portion
63	CARLTON HILL	307	8	31°49'15.19S	18°37'6.63E	Farm Portion
64	MELKBOOM	384	14	31°51'35.51S	18°35'23.2E	Farm Portion
65		306	0	31°47'14.53S	18°37'37.99E	Farm Portion
66	CARLTON HILL	307	1	31°49'17.63S	18°37'42.26E	Farm Portion
67	WINDHOEK	449	2	31°47'35.19S	18°38'29.57E	Farm Portion
68		472	0	31°49'45.04S	18°36'27.36E	Farm Portion
69	ROSSOUWS KRAAL	390	5	31°50'48.93S	18°33'1E	Farm Portion
70	WINDHOEK	449	2	31°47'43.55S	18°38'43.13E	Farm Portion
71		472	0	31°49'31.95S	18°35'30.37E	Farm Portion
72	RIETRYLAAGTE	508	0	31°52'10.09S	18°32'7.81E	Farm Portion
73		472	0	31°49'46.72S	18°36'27.11E	Farm Portion
74	RIETRYLAAGTE	509	0	31°52'12.39S	18°34'38.76E	Farm Portion

Development footprint¹ vertices:
No development footprint(s) specified.

¹ “development footprint”, means the area within the site on which the development will take place and includes all ancillary developments for example roads, power lines, boundary walls, paving etc. which require vegetation clearance or which will be disturbed and for which the application has been submitted.

Wind and Solar developments with an approved Environmental Authorisation or applications under consideration within 30 km of the proposed area

No	EIA Reference No	Classification	Status of application	Distance from proposed area (km)
1	12/12/20/2677	Solar PV	Approved	29.2
2	12/12/20/2571	Solar PV	Approved	21.8
3	14/12/16/3/3/1/1049	Solar PV	Approved	18.7
4	12/12/20/2123	Solar PV	Approved	21.8

Environmental Management Frameworks relevant to the application

No intersections with EMF areas found.

Environmental screening results and assessment outcomes

The following sections contain a summary of any development incentives, restrictions, exclusions or prohibitions that apply to the proposed development site as well as the most environmental sensitive features on the site based on the site sensitivity screening results for the application classification that was selected. The application classification selected for this report is:

Any activities within or close to a watercourse.

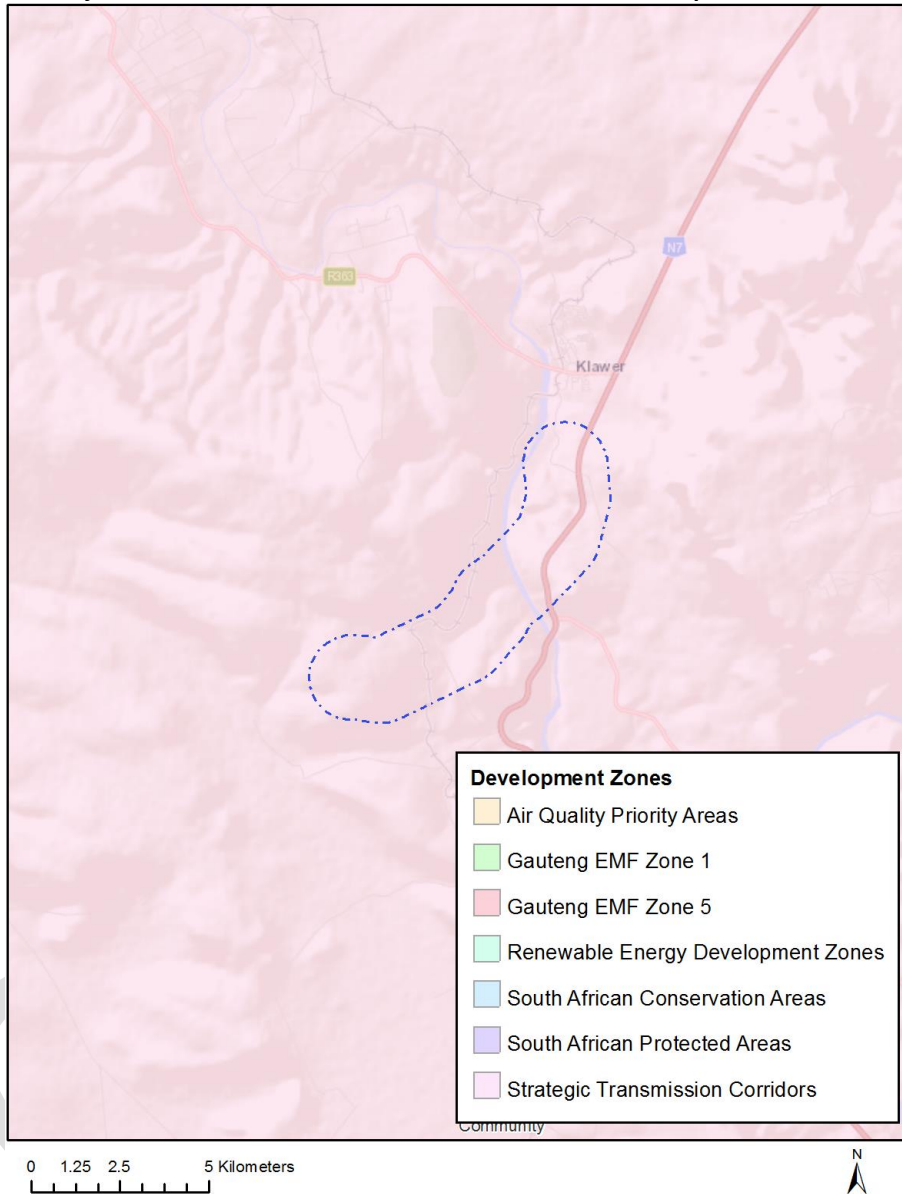
Relevant development incentives, restrictions, exclusions or prohibitions

The following development incentives, restrictions, exclusions or prohibitions and their implications that apply to this site are indicated below.

Incentive, restriction or prohibition	Implication
Strategic Transmission Corridor- Western corridor	https://screening.environment.gov.za/ScreeningDownloads/DevelopmentZones/GN11316February2018.pdf

Map indicating proposed development footprint within applicable development incentive, restriction, exclusion or prohibition zones

Project Location: Klawer WEF 22kV Powerline, Western Cape, South Africa



Proposed Development Area Environmental Sensitivity

The following summary of the development site environmental sensitivities is identified. Only the highest environmental sensitivity is indicated. The footprint environmental sensitivities for the proposed development footprint as identified, are indicative only and must be verified on site by a suitably qualified person before the specialist assessments identified below can be confirmed.

Theme	Very High sensitivity	High sensitivity	Medium sensitivity	Low sensitivity
Agriculture Theme	X			
Animal Species Theme		X		

Aquatic Biodiversity Theme	X			
Archaeological and Cultural Heritage Theme	X			
Civil Aviation Theme				X
Defence Theme				X
Paleontology Theme		X		
Plant Species Theme	X			
Terrestrial Biodiversity Theme	X			

Specialist assessments identified

Based on the selected classification, and the environmental sensitivities of the proposed development footprint, the following list of specialist assessments have been identified for inclusion in the assessment report. It is the responsibility of the EAP to confirm this list and to motivate in the assessment report, the reason for not including any of the identified specialist study including the provision of photographic evidence of the site situation.

N o	Specialist assessment	Assessment Protocol
1	Landscape/Visual Impact Assessment	https://screening.environment.gov.za/ScreeningDownloads/AssessmentProtocols/Gazetted_General_Requirement_Assessment_Protocols.pdf
2	Archaeological and Cultural Heritage Impact Assessment	https://screening.environment.gov.za/ScreeningDownloads/AssessmentProtocols/Gazetted_General_Requirement_Assessment_Protocols.pdf
3	Palaeontology Impact Assessment	https://screening.environment.gov.za/ScreeningDownloads/AssessmentProtocols/Gazetted_General_Requirement_Assessment_Protocols.pdf
4	Terrestrial Biodiversity Impact Assessment	https://screening.environment.gov.za/ScreeningDownloads/AssessmentProtocols/Gazetted_Terrestrial_Biodiversity_Assessment_Protocols.pdf
5	Aquatic Biodiversity Impact Assessment	https://screening.environment.gov.za/ScreeningDownloads/AssessmentProtocols/Gazetted_Aquatic_Biodiversity_Assessment_Protocols.pdf
6	Hydrology Assessment	https://screening.environment.gov.za/ScreeningDownloads/AssessmentProtocols/Gazetted_General_Requirement_Assessment_Protocols.pdf
7	Socio-Economic	https://screening.environment.gov.za/ScreeningDownloads/AssessmentProtocols/Gazetted_General_Requirement_Assessment_Protocols.pdf

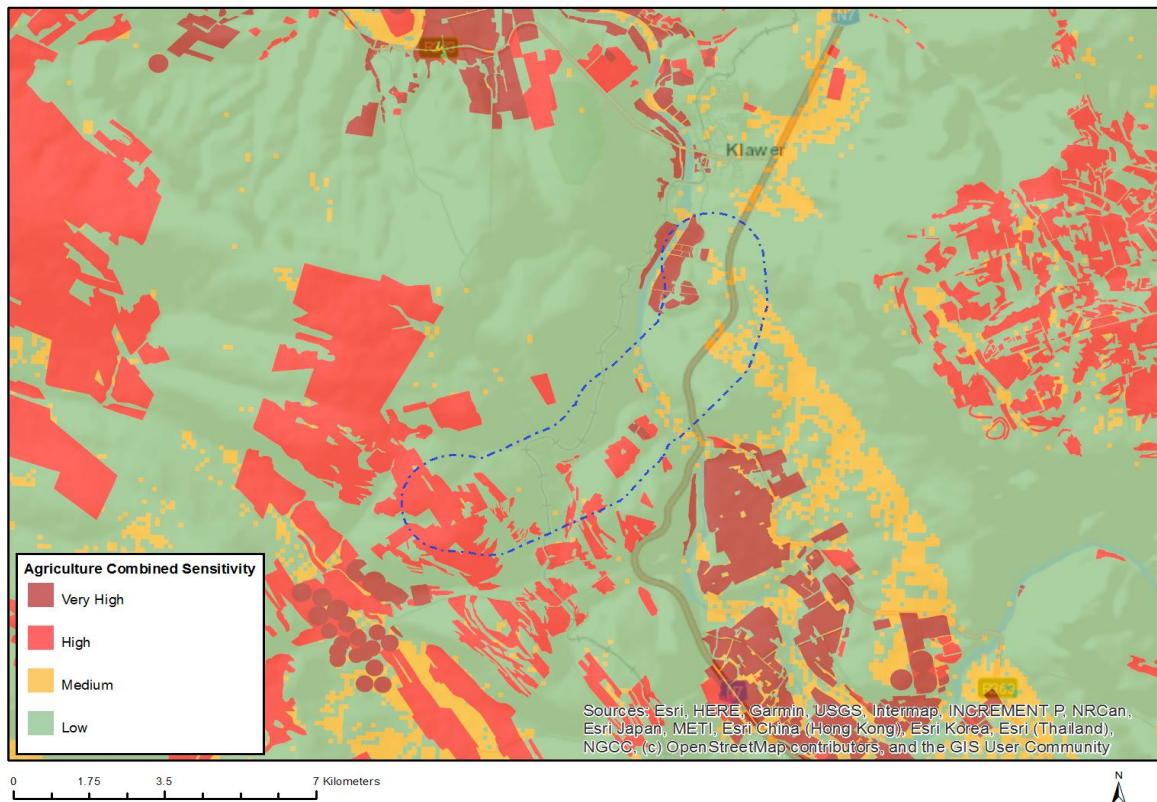
	Assessment	
8	Plant Species Assessment	https://screening.environment.gov.za/ScreeningDownloads/AssessmentProtocols/Gazetted_Plant_Species_Assessment_Protocols.pdf
9	Animal Species Assessment	https://screening.environment.gov.za/ScreeningDownloads/AssessmentProtocols/Gazetted_Animal_Species_Assessment_Protocols.pdf

OFFICIAL

Results of the environmental sensitivity of the proposed area.

The following section represents the results of the screening for environmental sensitivity of the proposed site for relevant environmental themes associated with the project classification. It is the duty of the EAP to ensure that the environmental themes provided by the screening tool are comprehensive and complete for the project. Refer to the disclaimer.

MAP OF RELATIVE AGRICULTURE THEME SENSITIVITY

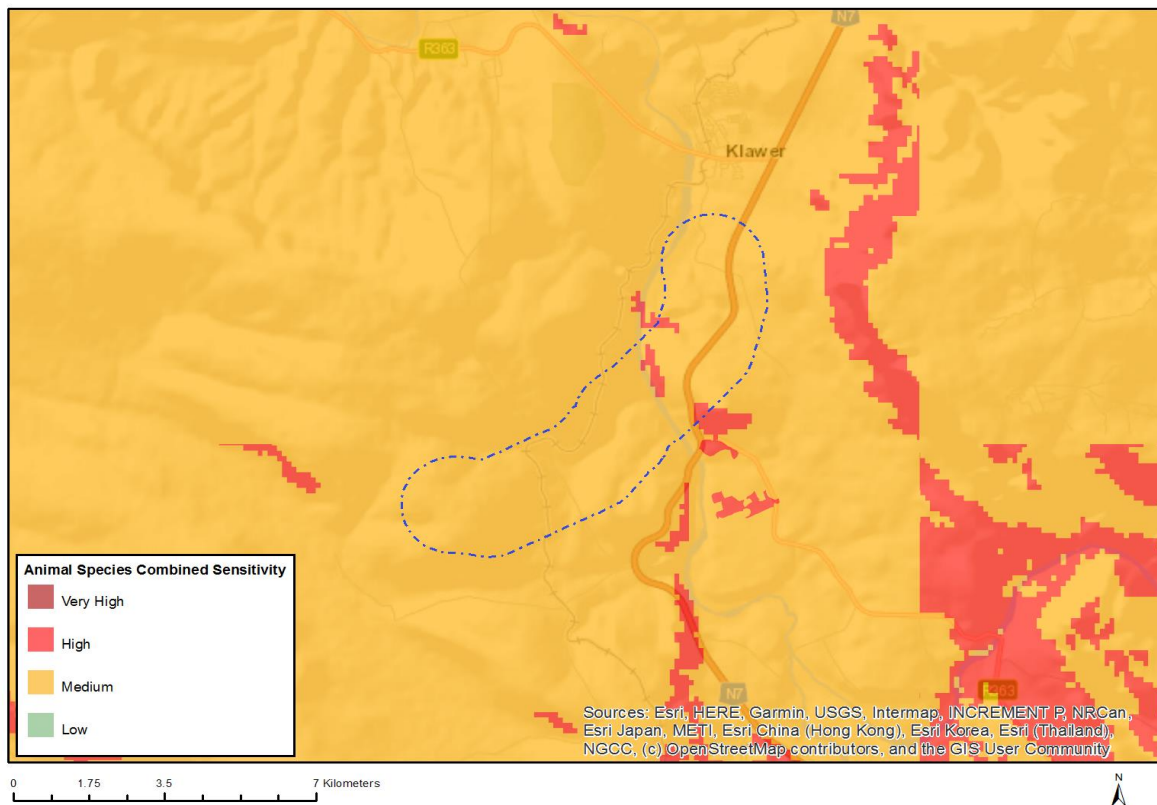


Very High sensitivity	High sensitivity	Medium sensitivity	Low sensitivity
X			

Sensitivity Features:

Sensitivity	Feature(s)
High	Strip Field Cultivation;Land capability;01. Very low/02. Very low/03. Low-Very low/04. Low-Very low/05. Low
High	Annual Crop Cultivation / Planted Pastures Rotation;Land capability;01. Very low/02. Very low/03. Low-Very low/04. Low-Very low/05. Low
High	Annual Crop Cultivation / Planted Pastures Rotation;Land capability;06. Low-Moderate/07. Low-Moderate/08. Moderate
High	Strip Field Cultivation;Land capability;06. Low-Moderate/07. Low-Moderate/08. Moderate
Low	Land capability;01. Very low/02. Very low/03. Low-Very low/04. Low-Very low/05. Low
Medium	Land capability;06. Low-Moderate/07. Low-Moderate/08. Moderate
Very High	Viticulture;Land capability;01. Very low/02. Very low/03. Low-Very low/04. Low-Very low/05. Low
Very High	Viticulture;Land capability;06. Low-Moderate/07. Low-Moderate/08. Moderate

MAP OF RELATIVE ANIMAL SPECIES THEME SENSITIVITY



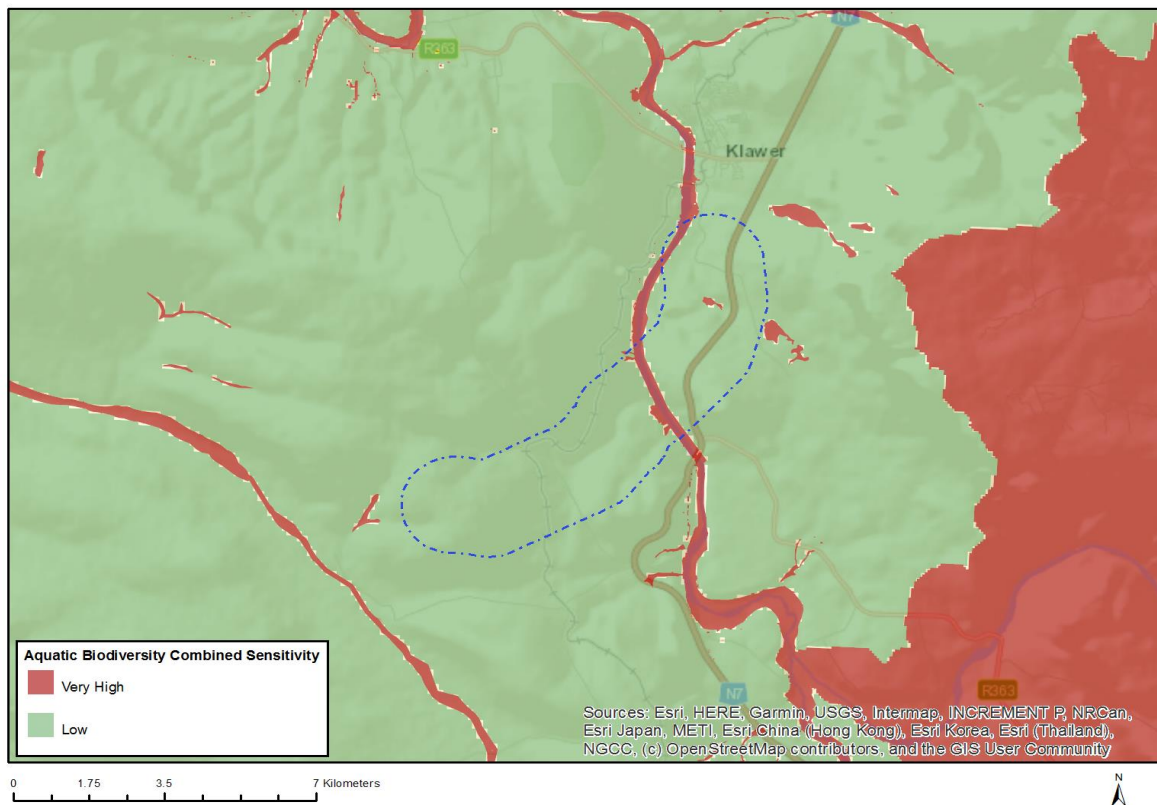
Where only a sensitive plant unique number or sensitive animal unique number is provided in the screening report and an assessment is required, the environmental assessment practitioner (EAP) or specialist is required to email SANBI at eiadatarequests@sanbi.org.za listing all sensitive species with their unique identifiers for which information is required. The name has been withheld as the species may be prone to illegal harvesting and must be protected. SANBI will release the actual species name after the details of the EAP or specialist have been documented.

Very High sensitivity	High sensitivity	Medium sensitivity	Low sensitivity
	X		

Sensitivity Features:

Sensitivity	Feature(s)
High	Aves-Aquila verreauxii
Medium	Invertebrate-Bullacris obliqua
Medium	Invertebrate-Brinckiella aptera
Medium	Invertebrate-Brinckiella mauerbergerorum
Medium	Invertebrate-Pachysoma glentoni
Medium	Sensitive species 4
Medium	Aves-Neotis ludwigii
Medium	Aves-Sagittarius serpentarius
Medium	Aves-Circus maurus

MAP OF RELATIVE AQUATIC BIODIVERSITY THEME SENSITIVITY

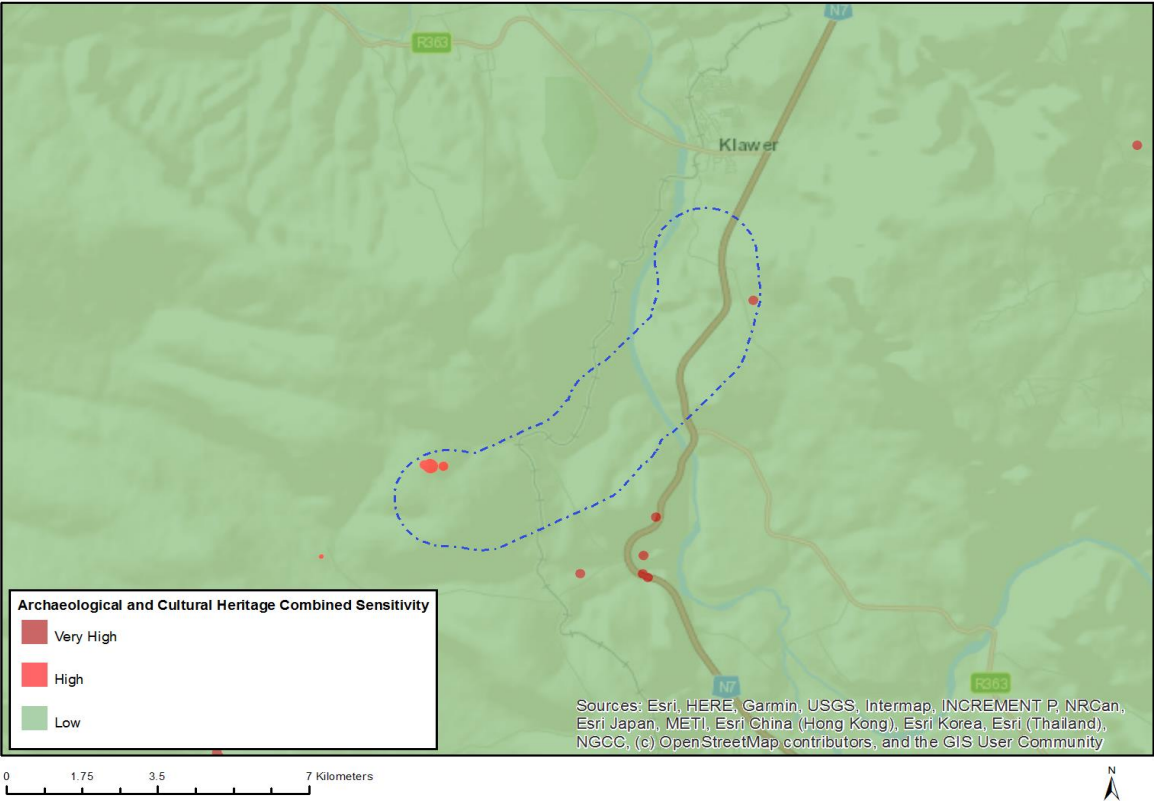


Very High sensitivity	High sensitivity	Medium sensitivity	Low sensitivity
X			

Sensitivity Features:

Sensitivity	Feature(s)
Low	Low sensitivity
Very High	Aquatic CBAs
Very High	Wetlands and Estuaries

MAP OF RELATIVE ARCHAEOLOGICAL AND CULTURAL HERITAGE THEME SENSITIVITY

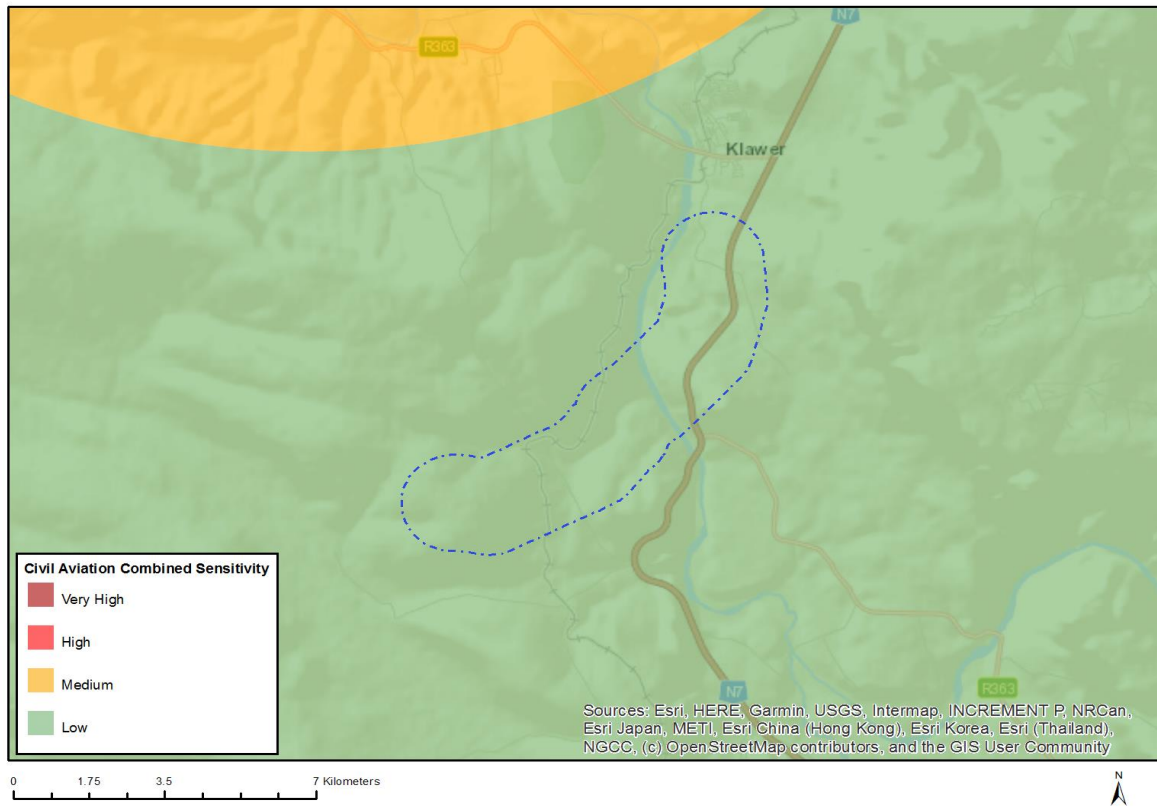


Very High sensitivity	High sensitivity	Medium sensitivity	Low sensitivity
X			

Sensitivity Features:

Sensitivity	Feature(s)
High	Within 150m of a Grade IIIa Heritage site
High	Within 100m of a Grade IIIb Heritage site
Low	Low sensitivity
Very High	Within 100m of an Ungraded Heritage site

MAP OF RELATIVE CIVIL AVIATION THEME SENSITIVITY

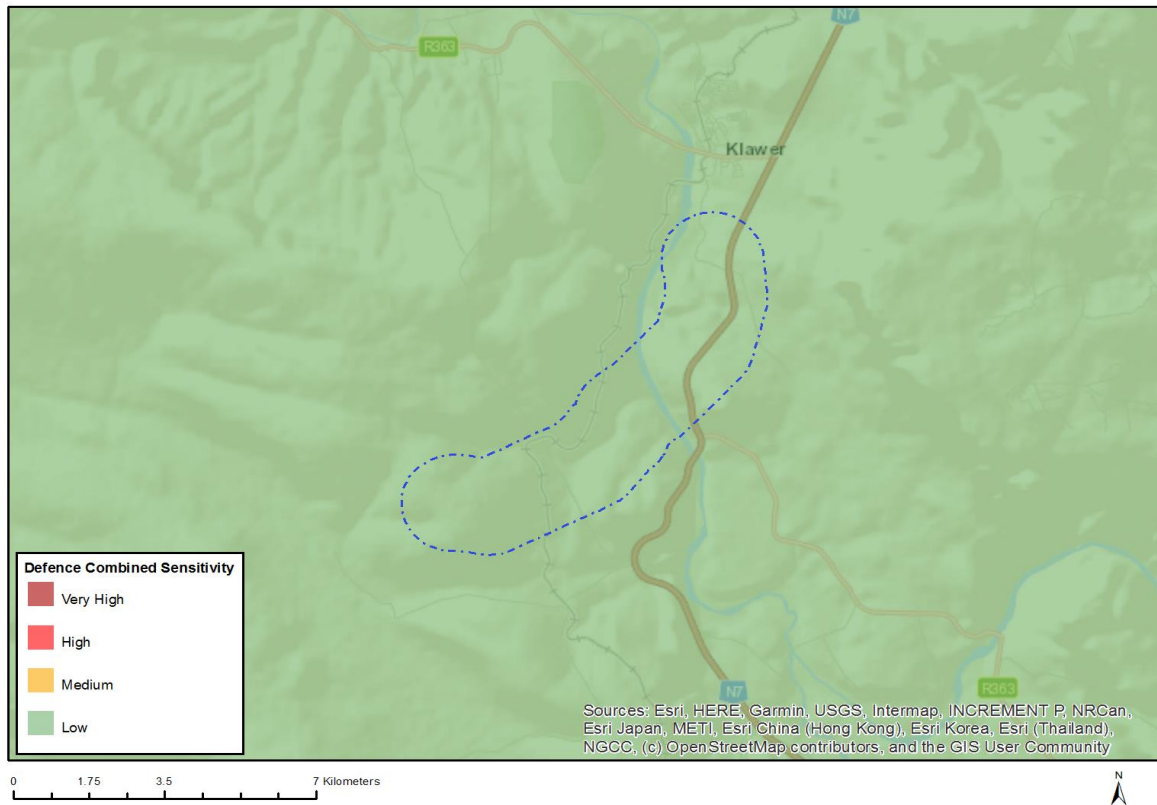


Very High sensitivity	High sensitivity	Medium sensitivity	Low sensitivity
			X

Sensitivity Features:

Sensitivity	Feature(s)
Low	Low sensitivity

MAP OF RELATIVE DEFENCE THEME SENSITIVITY

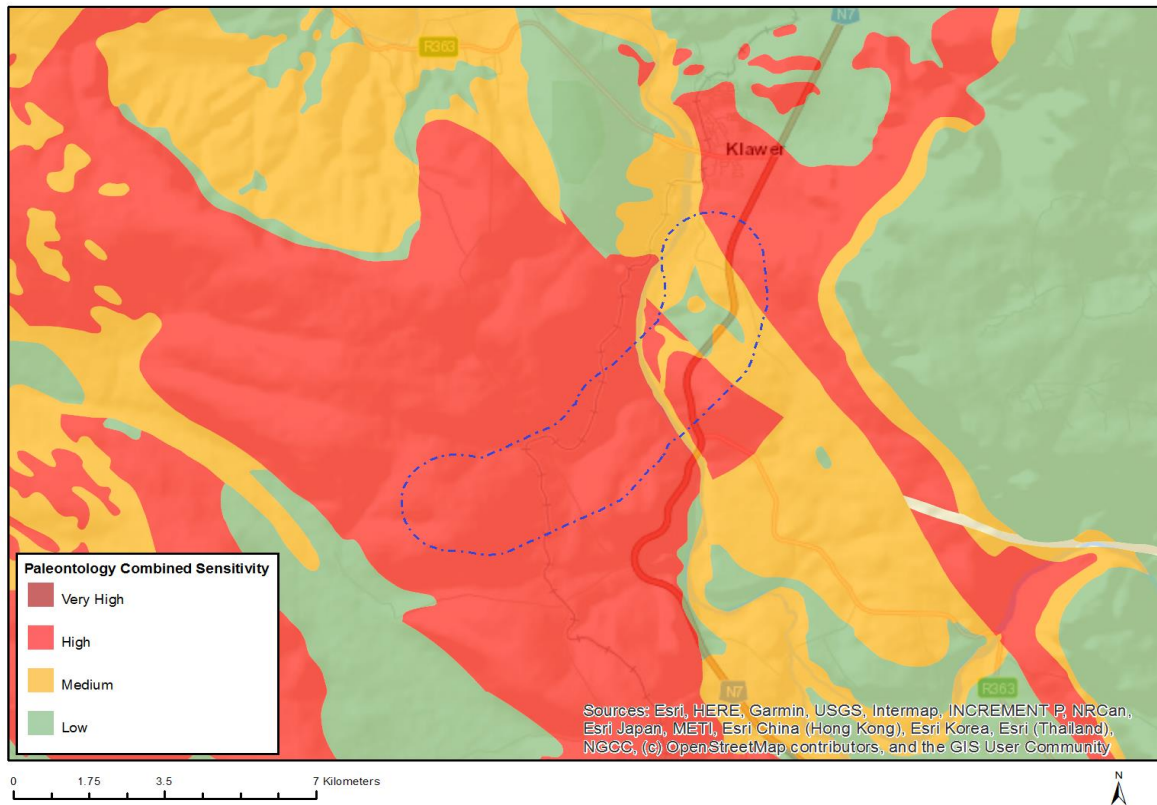


Very High sensitivity	High sensitivity	Medium sensitivity	Low sensitivity
			X

Sensitivity Features:

Sensitivity	Feature(s)
Low	Low Sensitivity

MAP OF RELATIVE PALEONTOLOGY THEME SENSITIVITY

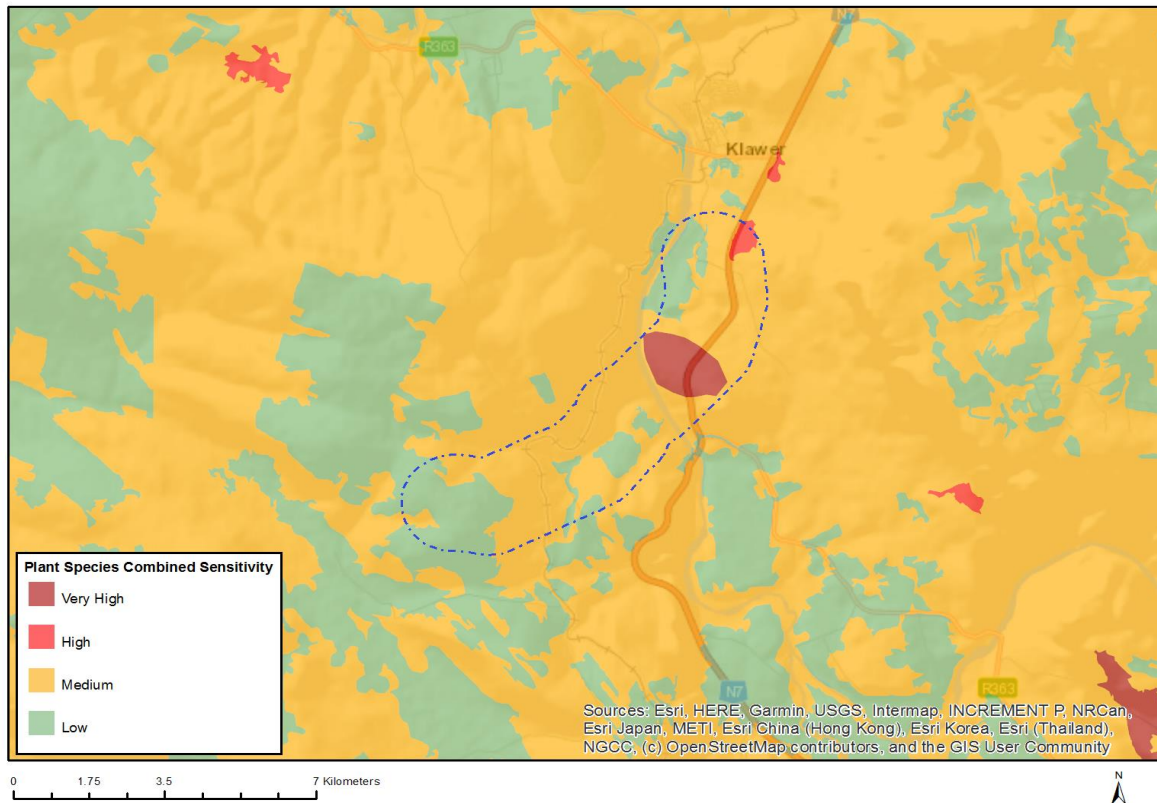


Very High sensitivity	High sensitivity	Medium sensitivity	Low sensitivity
	X		

Sensitivity Features:

Sensitivity	Feature(s)
High	Features with a High paleontological sensitivity
Low	Features with a Low paleontological sensitivity
Medium	Features with a Medium paleontological sensitivity

MAP OF RELATIVE PLANT SPECIES THEME SENSITIVITY



Where only a sensitive plant unique number or sensitive animal unique number is provided in the screening report and an assessment is required, the environmental assessment practitioner (EAP) or specialist is required to email SANBI at eiadatarequests@sanbi.org.za listing all sensitive species with their unique identifiers for which information is required. The name has been withheld as the species may be prone to illegal harvesting and must be protected. SANBI will release the actual species name after the details of the EAP or specialist have been documented.

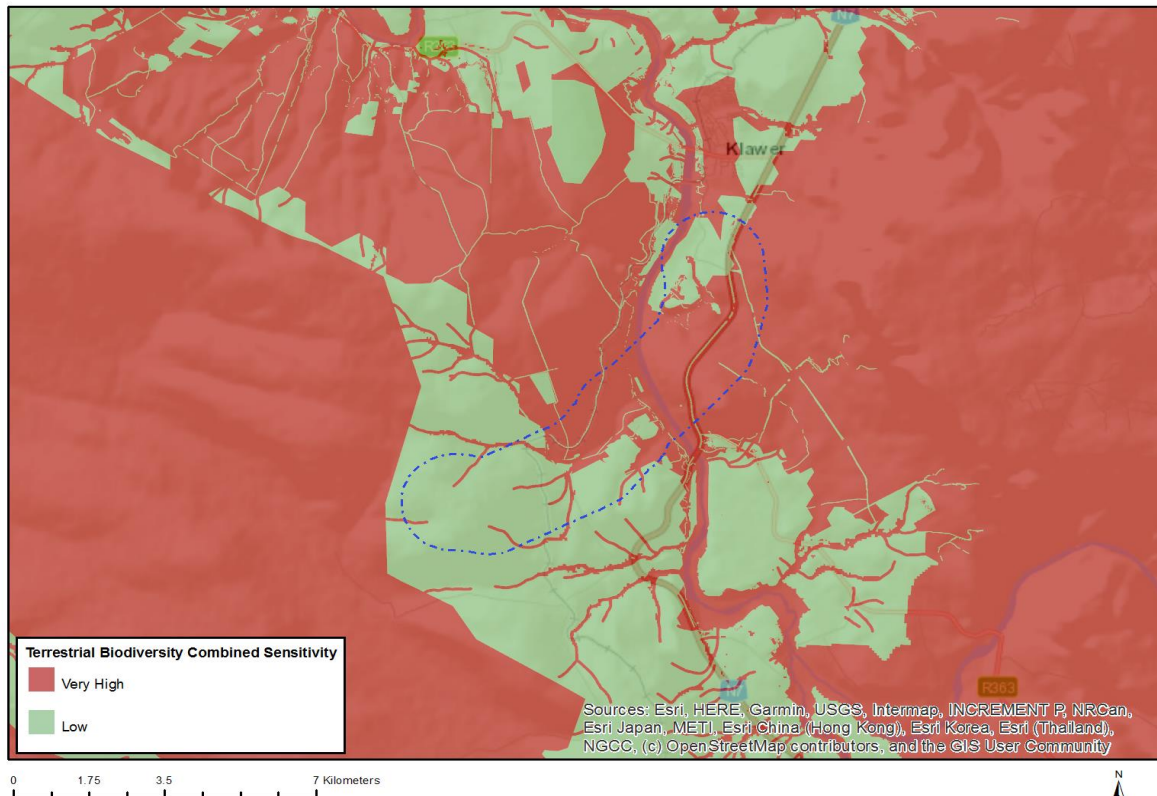
Very High sensitivity	High sensitivity	Medium sensitivity	Low sensitivity
X			

Sensitivity Features:

Sensitivity	Feature(s)
High	Walleria gracilis
Low	Low Sensitivity
Medium	Leipoldtia klaverensis
Medium	Sensitive species 325
Medium	Ruschia bipapillata
Medium	Ruschia incurvata
Medium	Ruschia lapidicola
Medium	Cephalophyllum pulchrum
Medium	Psoralea angustifolia
Medium	Aspalathus cuspidata
Medium	Hyaenanche globosa
Medium	Leucadendron procerum
Medium	Serruria millefolia
Medium	Dischisma squarrosum
Medium	Manulea ramulosa

Medium	Diascia ellaphieae
Medium	Sensitive species 392
Medium	Sensitive species 36
Medium	Sensitive species 222
Medium	Sensitive species 869
Medium	Sensitive species 789
Medium	Sensitive species 302
Medium	Sensitive species 26
Medium	Ficinia quartzicola
Medium	Restio longiaristatus
Medium	Sensitive species 309
Medium	Athanasia leptcephala
Medium	Athanasia sertulifera
Medium	Agathosma elata
Medium	Adromischus maximus
Medium	Walleria gracilis
Medium	Lampranthus glaucus
Medium	Aspalathus obtusata
Medium	Leucospermum praemorsum
Medium	Leucospermum rodolentum
Medium	Protea scolymocephala
Medium	Ophioglossum bergianum
Medium	Oxalis dines
Medium	Adenogramma teretifolia
Medium	Sensitive species 1107
Medium	Heliophila elata
Medium	Leucoptera subcarnosa
Medium	Muraltia obovata
Medium	Caesia sabulosa
Very High	Steirodiscus linearilobus

MAP OF RELATIVE TERRESTRIAL BIODIVERSITY THEME SENSITIVITY



Very High sensitivity	High sensitivity	Medium sensitivity	Low sensitivity
X			

Sensitivity Features:

Sensitivity	Feature(s)
Low	Low Sensitivity
Very High	Ecological Support Area 2
Very High	Ecological Support Area 1
Very High	Critical Biodiversity Area 2
Very High	Critical Biodiversity Area 1
Very High	Vulnerable ecosystem

OFFICIAL