



# Y ingenierie

**IGREC INGENIERIE SAS**  
General Engineering - Research - Design - Consultancy

Our world is changing fastly and demands ever greater adaptability, improved performance and safety.

The revolution in methods of calculation and communication has entered the construction professions, which owe it to their customers to provide additional service and intelligence in the building industry.

These requirements have been expanded to the concept of overall and sustainable quality in buildings, which affects all players in the life of a building project, and in all its aspects, including construction, use, maintenance and demolition.

By its activities of General Engineering, Research, Design and Consultancy, IGREC INGENIERIE is a major player of these changes.

IGREC INGENIERIE, with more than 55 years of experience, a continuous, operational and accessible management, and rapidly responding, multi-disciplinary teams, is able to undertake innovative projects on any scale and however complex.

Our organization, which remains flexible and friendly, works through personal contacts, respect for others, autonomy and personal responsibility.

Our aim is to provide custom-made solutions. Let IGREC INGENIERIE be the partner of your project from the design to the realization.

Marc Borensztein, President

## A long-established company

The «Groupe d'Études pour la Construction» was created in 1958 grouping together several design organizations specialized in construction techniques.

Distinguished by the continuity of its management, it expands its activities to cover General Engineering, Research, Design, and Consulting under its present name of IGREC INGENIERIE.

## Objectivity and loyalty provided by an independent company

IGREC INGENIERIE is a simplified joint-stock company with shares entirely held by its managing team and its main executive managers.

This enables IGREC INGENIERIE to remain independent and fully in control of its professional ethical standards, and to guarantee confidentiality, objective judgements and loyalty in dealing with your projects.



Projects all over the world

# Continuity, loyalty and skills for an effective partnership

## An approach based on partnership

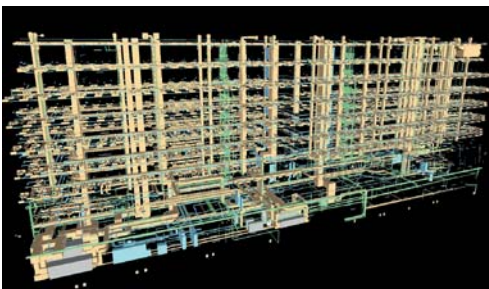
As an organization on a human scale, IGREC INGENIERIE relies on personal contacts in order to provide a **customized service**. Its aim is to act as a **responsible, creative and innovative** partner at all stages of your projects, from design to implementation and operating.



## Effective human and material resources

Thanks to its **multi-disciplinary team**, IGREC INGENIERIE is able to provide all-inclusive and coordinated services in all its special technical and economic fields, including project management, civil engineering, air-conditioning, electrical and communication equipment, industrial processes, infrastructures, quantity surveying and works management.

Building Information Modeling, structure and fluids calculation, energy efficiency, our engineers and technicians have efficient software which meet changing client demands. By this action, we bring our professionalism and responsiveness into projects we are entrusted.



## Tried and tested professionalism

Many prestigious references testify to IGREC INGENIERIE's skills. These are ensured by **professional qualifications certified** by the OPQIBI. The management system implemented by IGREC INGENIERIE has been assessed and found to meet the **requirements** of ISO 9001 : 2008.

IGREC INGENIERIE is an active member of the professional association SYNTEC Ingénierie.



## A wild field of activities

IGREC INGENIERIE carries out general engineering and consulting projects in a wide range of fields, including **building, industry, infrastructures, transport, energy** and the **environment**.

The following pages illustrate our references in the fields of consultancy, government buildings, education, culture, sports and leisure, residential, health, laboratories, commercial activities, hotels, offices, industry, urban planning, civil engineering, transports, hydraulic and networks.



# General Engineering & Design

**Assist our customers and partners to develop and manage their projects**

IGREC INGENIERIE carries out general engineering and consultancy for **construction** and **rehabilitation** projects. And this from the management assistance and the specialized technical studies, to the works management, implementation and maintenance assistance. We also manage sustainable development certifications our clients opted for.

## Consultancy

### Project management

### Design and implementation studies

- Civil engineering and structural engineering
- Infrastructure engineering
- Urban hydraulics engineering
- Containment engineering
- Energy performance engineering
- Fluids and networks engineering
- HVAC
- Electrical engineering
- Safety engineering
- Low-voltage engineering

### Quantity surveying

### Works management

### Assistance to property developers

### Sustainable Development consulting

### Implementation, maintenance and dismantling assistance

### Diagnosis, planning, feasibility, expertise

### Scheduling and coordination

### Safety and security



Above-ground parking structure (3,200 lots) in Toulouse-Blagnac (31)  
SCAU Azema Architects



Drainage networks at Seine Arche District in Nanterre (92)  
TGT Architect



Controlled atmosphere area for EFA Medical SORIN Group in Clamart (92), ABH Architect



Anatole France Viaduct in Nanterre (92)  
TGT Architect



Offshore assembly wind power plant in Montoir de Bretagne (44)  
Philippe Cointet Architect - Quille Company- EGIS Grand Ouest



The «Sugar warehouse» in Dunkerque (59)  
- Pierre-Louis FALOCI Architect

## We promote responsible conception to enable sustainable construction

Ours engineers and technicians have worked to increase buildings environmental and energy efficiency. We believe in our social responsibility to the citizens and the coming generations. This is why we keep in mind our constructions have to protect their life quality in the future.

For project management mission or project ownership assistance, the assessment of environmental issues is a responsibility act for the coming generations. To meet users' immediate needs must not compromise their quality of life in the future.

Advice and assistance, promotion of renewable energies, energy, water and waste management, site with minimal environmental nuisances, selection of construction methods, our team offers innovative solutions to meet requirements of various international standards (BREEAM, HQE, LEED, Passivhaus,...). Thus, our projects can claim a true quality of sustainable and responsive construction.

IGREC INGENIERIE plays an active role in professional think-tanks initiated since the French Grenelle Environment Forum. For each project, we promote an environmental, innovative and sustainable construction.

Let us promote an environmental, innovative and sustainable construction.

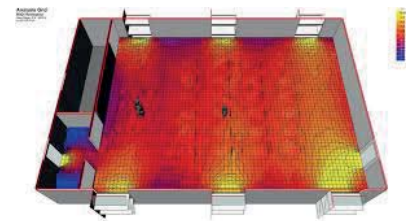
## Tools for optimal design and rigorous implementation

Thanks to its multi-disciplinary engineering, IGREC INGENIERIE is able to use all modeling tools essential to the optimized design of building and infrastructure projects. IGREC INGENIERIE has also developed expertise on 3D numerical modeling for the realization of full project management with BIM (Building Information Modeling).

To ensure a rigorous monitoring of works, IGREC INGENIERIE has specific tools, particularly for the cloud management of visas implementation plans and for acceptance operations.



Desmoulins mixed development zone in Cachan (92)  
AAA Paris Architect



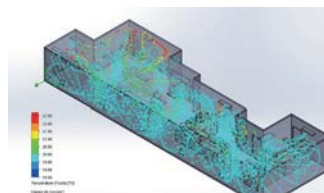
ECOTECT  
This 3D modeling software is made to represent the solar incident radiation and to analyse of prevailing winds.



MENSURA  
This software is made for urban planning projects. It is used for hydraulic design, water storage volume, excavation works.



BIM (Building Information Modeling)  
I2BC project



SOLIDWORKS - 3D mechanical CAD  
program for internal & external Fluid-Flow  
simulations and thermal analysis



Aerolics performance measurement  
with a balometer

# Government Building



City Hall in Fosses (95)  
Pierre-Louis Faloci Architect



«Les Croisettes» prison in Le Mans (72)  
Synthèse Architecture - Alain Derbesse



Regional Administrative Centre in Sarcelles (95) for the French Home Office  
Michel Rémon Architect



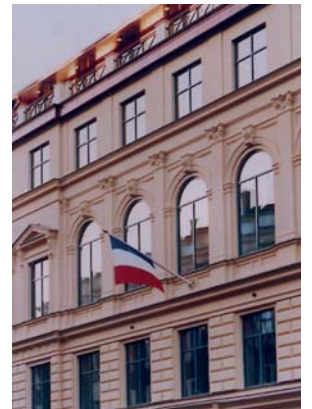
Administrative Centre in Meudon (92)  
Pierre-Louis Faloci Architect



Delorme Police Station in Marseille (13)  
Thierry Van de Wyngaert Architect



French Embassy in Hanoi - Vietnam  
Cochin Architect



French Embassy in Stockholm - Swenden  
Equator Paris Architect



Administrative Centre in Melun (77)  
Atelier de L'Île Architect - IGREC INGENIERIE  
Project Manager and Representative



Court Officers National Schools in Dijon (21)  
Michel Rémon Architect

# Education



Refurbishment of Wendel Mansion into an elementary school in Paris (75) - SCAU Architect



House of Human Sciences in Paris (75)  
François Chatillon, ACMH - Michel Rémon Architects



Paris Sorbonne University (75)  
Elizabeth and Christian de Portzamparc Architects



Paris XII University - Law faculty and library in Creteil (94)  
Michel Rémon Architect



Albert Schweitzer High School in Raincy (93)  
Pierre Louis Faloci Architect



Alexandre Denis boarding school in Cerny (91)  
Celnikier & Grabli Architect



Farming vocational High School in Brie Comte Robert (77) - Ateliers 234 Architect



ENSAM Engineering University in Metz (51)  
Michel Rémon Architect



Health Regional School in Toulouse (31)  
Ateliers Lion Architect



University of Burgundy in Dijon (21)  
Michel Rémon Architect



«Les Chênes» University in Cergy-Pontoise (95)  
Michel Rémon Architect

# Culture



Fine Arts Museum in the Dukes of Burgundy's palace in Dijon (21)  
Ateliers Lion Architect – Éric Pallot ACMH



Central Pavilion Familistère in Guise (02)  
Frenak & Jullien Architect



Sénart Theater (77)  
Chaix & Morel Architect



Museum of Economics and Currency in Paris (75)  
Ateliers Lion Architect – Éric Pallot ACMH



Refurbishment of the Museum of Picardie in Amiens (80)  
Frenak & Jullien Architect



Forum des Images and François Truffaut national cinema library in Paris (75) - X'TU Architect



The «Sugar warehouse» in Dunkerque (59)  
Pierre-Louis Faloci Architect



Mosque and Muslim Cultural Centre in Boulogne-Billancourt (92) - Pierre-Louis Faloci Architect



«La Carène» Contemporary Music Hall in Brest (29)  
Ripault & Duhart Architect



«La Cartonnerie» contemporary Music Hall in Reims (51)  
Ripault & Duhart Architect



Music Café in Savigny-le-Temple (77)  
Périphériques & Jacob-MacFarlane Architects



«Notre Dame de la Sagesse» Chapel in Paris (75)  
Pierre-Louis Faloci Architect



# Sports & Leisure



Marie Paradis Gymnasium in Paris (75)  
Explorations Architecture



Auguste Delaune Stadium in Reims (51)  
Michel Rémon Architect



Beach and Swimming Area in the public regional leisure centre in Torcy (77)  
Michel Rémon – Jacques Coulon Architects



Re-structuring and refurbishment of Gaston Gérard Stadium in Dijon (21)  
Michel Rémon Architect



Renovation and extension of the Municipal swimming-pool in Boulogne-Billancourt (92) - Nabères TNA Architect

# Housing



Refurbishment of the «Palais de la Femme» in Paris (75) for the Salvation Army by Immobilière 3F  
A.X.C. Architect  
IGREC INGENIERIE Project Manager and Representative



Paris Habitat Housing - Day nursery - Retail  
Paris Rive Gauche (75) - SOA Architect



Social Housing for RSF in Cesson (77)  
Raphaël Gabrion Architect



Housing and Retail Building for Icade and Nexity in  
Boulogne-Billancourt (92) - Ateliers 234 Architect



Social housing for Immobilière 3F in Mennecy (91)  
Jean Guevilly Architect



Refurbishment of «Prélude and Sonate» Towers for Immobilière 3F in Paris (75)  
Ateliers Lion Architect



Social housing in Paul Bourget street for ELOGIE Paris (75)  
VEI & Nomade Architect



Aegide Senior Residence in Briançon (05)  
Pierre-Louis Faloci Architect

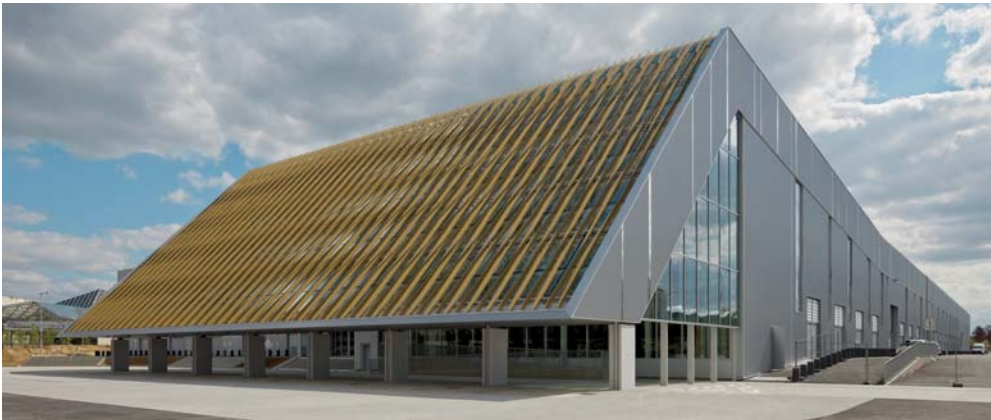


Student housing for RIVP in Paris (75)  
Nicolas Reymond Architect



Housing and retail building by Icade and Vinci Immobilier Arche en  
Seine in Nanterre (92) - Ateliers 234 Architect

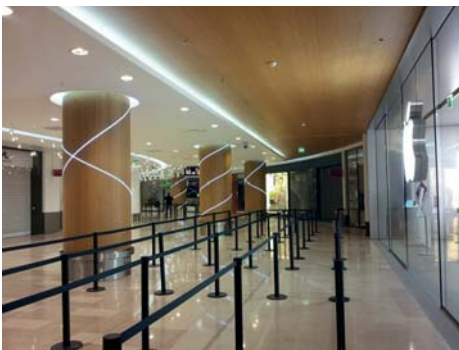
# Shops and Hotels



«Hall 7», International Business and Convention Centre in Paris-Nord-Villepinte (93)  
Chaix & Morel Architect



«Les Passages» Shopping Complex by SEGECE in Boulogne-Billancourt (92)  
Dusapin & Leclercq Architect



«Les Quatre Temps» Shopping Complex in Paris La Défense (92)  
Farcot & Associés - Saguez & Partners Architects



Convention Centre in Paris Porte Maillot Paris (75)  
Nicolas Adam - Saguez & Partners Architects



Intercontinental Hotel in Paris (75)  
J-J. Ory Architect



Shangri-La Hotel in Paris (75)  
Richard Martinet Architect - Pierre-Yves Rochon Interior Designer



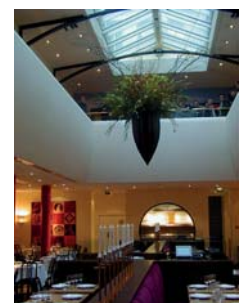
Residential Building and Retails Porte Pouchet by CFA in Paris (75)  
Hardel & Le Bihan Architect



Smart Center Showrooms  
Adaptation France - Equator Paris Architects



«Rives d'Arcin» Shopping Complex by SEGECE in Bègles (33)  
CVZ Architect



Alcazar Restaurant in Paris (75)  
for Sir Terence Conran  
CD Partnership Architect

# Health



Lagny 585 beds regional hospital in Marne la Vallée (77)  
Brunet & Saunier Architect



Hospital maternity and medical imaging - Le Chesnay hospital operating blocks in Versailles Le Chesnay (78) - Jean Dubus & Bernard Grimaux Architects



«La Pitié - Salpêtrière» Hospital Endocrinology Department in Paris (75)  
Michel Rémon Architect



100 beds health centre for elderly people in Paris (75)  
Lazo & Mure Architect



Geriatrics centre of the Regional Hospital in Poitiers (86)  
Lazo & Mure Architect



Health Centre for elderly people for the CASV in Villers-Cotterêt (02)  
Lazo & Mure Architect



Armand Trousseau Hospital Maternity in Paris (75)  
Laurent Israel & Bernard Grimaux Architects  
IGREC INGENIERIE Project Manager and Representative



Hemodialysis Centre, analysis laboratory, pharmacy and logistics of André Grégoire Regional hospital in Montreuil sous Bois (93)  
Charles Delamy Architect



Notre Dame de Bon Secours' Social health-care institution in Paris (75)  
Zündel & Cristea Architects

# Laboratories



Sorin France Laboratory in Clamart (92)  
ABH Architect



Laboratories of André Grégoire Hospital  
Montreuil sous Bois (93) - Charles Delamy Architect



Necker Hospital Medicine University in Paris (75)  
Patriarche & CO - Henn Architekten Architects



Construction of the Institute of integrative Biology of the Cell in Gif-sur-Yvette (91) - N. Ragueneau & A. Roux - Michel Rémon Architects



Biotechnology business incubator «Paris Sante Cochin» in Paris (75)  
Richez & Associés Architects



Interdisciplinary Research Centre of extreme light – CEA  
Project «RIO» in Gif sur Yvette (91)



Development of the Vision  
Institute in Paris (75)  
VIB Architect



Animal Housing Facility at Mondor Institute for Biomedical Research  
In Paris Créteil University (94) - Celnickier & Grabli Architect



Refurbishment of Physics, Chemistry and Environmental  
studies laboratories in Paris (75)  
PHD Architect - IGREC INGENIERIE Project Manager and Representative

# Offices and Activities



Equinove Buildings for Renault by Stargime in Le Plessis-Robinson (92)  
ABH Architect



R'Way office building by Bouygues Immobilier  
in Boulogne-Billancourt (92)  
Chaix & Morel Architect



Office building - Dieppe Sud Urban Development Zone (76)  
Baumschlager Eberle Architect



Haussmann Anjou complex by Bouygues Immobilier in Paris (75)  
Atelier J-J. Ory Architect



Office and research building for ONERA National Office for Aerospace  
Studies and Research in Palaiseau (91) - ABH Architect



Groupama Loire - Bourgogne Headquarters in  
Olivet (45) - DMT Architect



Incubator for innovative enterprises in Cite  
Descartes à Champs sur Marne (77)  
Studio Bellecour Architect



Pfizer headquarters by Bouygues Immobilier  
in Montrouge (92)  
Mas & Roux - Saubot & Rouit Architects



UGAN headquarters in Niamey - Niger  
Blé Yangra Architect



Offices - Gaston Tessier by SODEARIF in Paris (75)  
Ateliers 234 Architect

# Industry



ELA Medical/Sorin France Headquarters including a large clean room in Clamart (92)  
ABH Architect



MBDA Headquarters and process building by Stargime  
in Le Plessis-Robinson (92)  
ABH Architect



19 telecommunications centres in France  
for Lambdanet, Internet network provider



Dassault Falcon 7X maintenance Hanger in Le Bourget Airport (93)  
Christian Devilliers Architect



IndustriLab, aeronautic technology transfer centre specialized in robotics and composite materials in Méaulte (60)  
Michel Rémon Architect



Offshore assembly wind power plant in Montoir de Bretagne (44)  
Philippe Cointet Architect - Quille Company- EGIS Grand Ouest



CRMA aeronautics equipment maintenance plant by Sefri Cime in Elancourt (78)  
Patrice Novarina Architect

# Urban Planning



Terraces in Seine Arches Area urban Planning for EPADESA in Nanterre (92)  
TGT Architect and Planner



Urban and Landscape Design for Cluster Descartes In Marne la Vallée (77)  
Ateliers Lion Architect



Structural redesign of François Mitterrand Mail in Rennes (35)  
Mutabilis Landscape Architect



Laying out of the area around the City Hall of Asnières sur Seine (92) Atelier de l'Île Landscape Architect



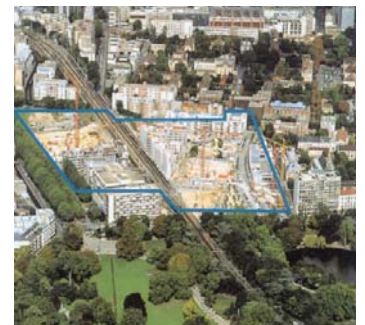
Multi-site joint development zone of Trilport (77)  
Françoise Héléne Jourda Architect



«Coeur de Ville» Urban Project in Briançon (05)  
Pierre-Louis Faloci Architect



Transborder development in Ferney-Voltaire (France) – Grand Saconnex (Switzerland) (75 ha)  
Seura Architect – Ilex Landscape Architect



Alésia Montsouris Urban Development in Paris (75) - Charlet Urban Planner - Michel Desvigne - Christine Dalnoky Landscape Architects



«Gare Ardoines» joint development zone (94)  
TGTFP Architect



Development Plan for the Park François Mitterrand in Bagneux (92) - Atelier de l'Île Landscape Architect



Multi-site joint development zone in Jouy-le-Moutier (95) - Richez & Associés Urban Architect



# Civil Engineering



Anatole France Viaduc Seine Arche District in Nanterre (92)  
TGT Architect and Urban Planner



Shopping complex car park in Boulogne-Billancourt (92)  
Dusapin & Leclercq Architects



Public car park in Orléans (45)  
Atelier Tudelle Architect



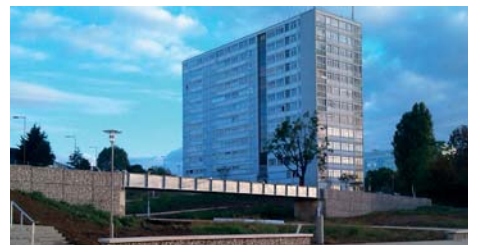
Multimodal exchange platforms in Herblay (95)  
Richez & Associés Architects



Overground car-park in Toulouse Blagnac Airport (31)  
SCAU - Azéma - Tsuba Architects



Bridge over RER A in Champs-sur-Marne (77)  
Ateliers Lion Architect



Footbridge in François Mitterrand Park in Bagneux (92)  
Atelier de l'Île landscape Architect



Relocation of electrical of RER Regional Express Network in Nanterre (92) - TGT Architecte



Restructuration of underground car-Park in Nanterre (92) - TGT Architect



Foot bridge over Boulevard du Port in Cergy Pontoise (95) - Michel Remon Architect

# Road and Infrastructure Transport



Laying out of a public area of Seine Arche District in Nanterre (92)  
TGT Architect and Planner



First tramway line in Orleans (45)  
Jean-Michel Wilmotte Architect



Public transport and urban integration in Reims (51)  
Michel Rémon Architect - Jacques Coulon Landscape Architect



New Pesaro boulevard  
Seine Arche District in Nanterre (92) - TGT Architect and planner



Laying out of a secondary highway road in Asnières and Gennevilliers (92)  
TGT Architect - Acte 2 Paysage Landscape Architect



Multimodal exchange platforms in Herblay (95)  
Richez & Associés Architects



Aircraft areas in Le Bourget Airport (93)

# Urban Hydraulics - Networks



Oils separators setting in restricted areas at Le Bourget Airport (93)



Drainage networks at Seine Arche District in Nanterre (92)  
TGT Architects



Drainage works at Cluster Descartes in Marne la Vallée (77) - Ateliers Lion Architects



Laying out of du François Mitterrand mail in Rennes (35) - Mutabilis Landscape Architect



Construction of a pipe gallery and utility network displacement at la Pitié-Salpêtrière Hospital in Paris (75)



Creation of an outside basin of 2 370 m3 at Le Bourget Airport (93)



Water development and management Master plan at Le Bourget Airport (93)



SEDIF - Drinking waterworks renewal in the south of the Paris region (91, 92, 94)



Alternative wastewater treatment process at Bougainville High School in Brie-Comte-Robert (77)  
Ateliers 234 Architect



Landscape basin – Urban Development Zone Desmoulin in Cachan (92) AAA Architect

crédits photo : Daniel Osso, J.-M. Monthiers, Nicolas Borel, Alexandre Duprez, Arnaud Finistre, Marie Ferrari, Alexandre Tabaste, Julien Lanoo, Hervé Abbadie, Shangri-La Hotels and Resorts, 11 H45, Sergio Grazia, Dassault Aviation /DFS/ Ph. Stroppa, Gagneraud, Vincent Vidal, Cyrille Weiner, La République du Centre, SACER, Anne-Claude BARBIER, ALSTOM

MAJ oct. 2015

**Y**  
ingenierie



**IGREC INGENIERIE SAS**



127 avenue d'Italie CS 21405 - 75214 PARIS CEDEX 13 FRANCE - [www.y-ingenierie.com](http://www.y-ingenierie.com) - T (33) 1 53 94 73 73 - F (33) 1 53 54 73 99  
SAS au capital de 266 250 euros - RCS Paris B 784 564 197 - APE 7112 B - N° TVA intracommunautaire FR 19 784 564 197