

## Middle East Lepidoptera XXIX: Noctuidae Quadrifinae

Taken by G. EBERT and colleagues in Afghanistan.

by E. P. WILTSHIRE

The following is an annotated list of a number of Noctuidae recently submitted to me for study. For the most part these moths were captured more recently than those taken by German entomologists which I listed in some of my earlier works about Afghanistan, but as one or two examples taken in the previous decade were reincluded in the material now submitted to me, I have mentioned them again. All subfamilies in the group *Quadrifinae* are represented except the *Plusiinae* which were sent elsewhere.

Sub-family: *JASPIDIINAE*

*Eublemma arcuinna* HÜBNER ssp. *argillacea* TAUSCH.

Structurally this species cannot be separated generically from other *Porphyrinia* species, but its formal transfer can be left till the whole genus is revised.

CENTRAL AFGHANISTAN: Koh-i-Baba (south side) — Deh Zangi, 2500 m, 1 ex., vi-vii. 63, leg. HAMMER, coll. EBERT; Panjao, 2650 m, 1 ex., 20—22. vii. 66, leg. EBERT.

SOUTH-EASTERN AFGHANISTAN: Safed-Koh (south side), Shahidan, 2700 m, 1 ex., 21. vi. 66, leg. EBERT; Kotkai, 2350 m, leg. MÜLLER, 2 exs., 1967.

*Porphyrinia ostrina* HÜBNER

As in a previous collection from Afghanistan which I have studied, the series of this widespread species contains, in addition to normal forms with variable coloration and span of 18—20 mm, other larger forms of rather dull, suffused dark coloration and a span of 24—25 mm, which I have seen from no other country. The two forms fly at the same season, that is in the midsummer months. At lower altitudes the smaller alone is found, but both occur at the higher. Apart from size, the two forms appear identical in structure. Allowing for the already known variability of the smaller, typical form, their pattern-elements appear identical. I refrain from giving the larger form a special name, not considering it specifically distinct, and its relationship with the smaller being obscure.

CENTRAL AFGHANISTAN: Koh-i-Baba (south side), Panjao, 2650 m, 1 ex. of large form, 20—22. vii. 66, leg. EBERT; Paghman Mts., 2200 m, 1 ex. of large form, 20—22. vii. 63, leg. KASY & VARTIAN.

EASTERN AFGHANISTAN: Sarobi, 1100 m, 1 ex. of small form ab. *aestivalis* GUEN., coll. EBERT; Kabul-gorge, 22 km east of Kabul, 1650 m, 1 ex. of small form, ab. *aestivalis* GUEN., 5—12. vi. 66, leg. AMSEL; Salang-pass (north side), Khinjan, 2100 m, 1 small form of normal colouring, 5—11. vii. 66, leg. AMSEL.

SOUTH-EASTERN AFGHANISTAN: Safed Koh (south side), Kotkai, 2350 m, 1 ex., large form, 14.—27. vi. 1966, leg. EBERT.

*Porphyrinia albida* DUP. subsp. *compuncta* LED. **stat. nov.**

As the genitalia of *albida* f. *gratissima* STAUDINGER from the Atlas Mts., are identical with those of *compuncta* Led. from the Middle East, and also with those of *albida* f. *peralba* SCHAW. from Iraq, there appears no reason to hesitate longer in placing LEDERER's name as a race

or subspecies of that of DUPONCHEL, though the types of neither have been investigated. The series from Afghanistan is very variable; the central brown shade in the most bleached forms is incomplete, yet not so much as in *peralba*; it usually is fairly straight and passes proximally of the two black cell spots, but in the one fine example of ab. *rufata* WARREN it is angled and passes through them.

EASTERN AFGHANISTAN: Sarobi, 1 ex., 16. vii. 1964, leg. HAMMER, coll. EBERT; 1 ex., Kabul Gorge, 22 km. east of Kabul, 1650 m., 5—12. vi. 1966, leg. G. EBERT; and 2 exs., including 1 ab. *rufata*, Salang-Pass (north side), Khinjan, 2100 m., 5—11. vii. 1966, leg. H. G. AMSEL.

*Porphyrinia leucota* HAMPSON

The short series shows great variation in size, apparently unrelated to season. The two 1966 examples had spans of respectively 14 & 21 mm. The Sarobi example was less grey clouded and had a yellowish tinge.

EASTERN AFGHANISTAN: Sarobi, 1 ex., 10. vi. 1962, leg. HAMMER, coll. EBERT; 2 exs., Kabul Gorge, 5—12. vi. 1966, leg. H. G. AMSEL.

*Porphyrinia pannonica* FREYER

EASTERN AFGHANISTAN: Salang Pass (N.-Side), 2100 m., 1 ♂ (Prep. WK. 9), 5—11. vii. 1966, EBERT leg.

*Porphyrinia chlorotica* LED.

CENTRAL AFGHANISTAN: Koh-i-Baba Mts., Deh Zangi, 2500 m., 1 ex., vi-vii. 1963, leg. HAMMER, coll. G. EBERT.

*Porphyrinia polygramma* DUP.

CENTRAL AFGHANISTAN: Koh-i-Baba (south side), Panjao, 2650 m., 1 ex., 20—22. vii. 1966, leg. G. EBERT (a very pale example with scanty markings).

*Porphyrinia pallidula* H. S.

EASTERN AFGHANISTAN: Sarobi, 1100 m., 2 exs., 21. v. 1957, leg. EBERT.

*Porphyrinia straminea* STAUDINGER

EASTERN AFGHANISTAN: Sarobi, 1100 m., 1 ♀, Prep. WK. 6, 2. vii. 1962, leg. HAMMER, coll. G. EBERT.

*Porphyrinia conistrotata* HAMPSON

S. W. AFGHANISTAN: Darweshan, 500 m, Registan desert, 1 ex., 18. v. 1957, leg. G. EBERT; E. AFGHANISTAN: Kabul Gorge, 22 km east of Kabul, 1650 m, 4 exs., incl. ♂ Prep. WK. 7, 5—12. vi. 1966, leg. G. EBERT.

Subfamily: NYCTEOLINAE

*Earias insulana* BOISD.

S. E. AFGHANISTAN: Safed Koh (south side), Kotkai, 2350 m, 1 ex., 19—23. vi. 1966, leg. H. G. AMSEL.

*Earias pudicana* STAUDINGER

E. AFGHANISTAN, Kabul, 1 ex., 8. viii. 1966, leg. EBERT.

*Maurilia iconica* WALKER

S. E. AFGHANISTAN: Safed Koh (south side), Kotkai, 2350 m, 1 ex., 19—23. vi. 1966, leg. H. G. AMSEL.

Subfamily: *EUTELIANAE*

*Phlegetonia delatrix* GUENEE

E. AFGHANISTAN: Sarobi, 1100 m, 1 ex., 12. x. 1962, leg. HAMMER, coll. EBERT.

*Entelia adalatrix* HÜBN.

E. AFGHANISTAN: Sarobi, 1100 m, 2 ex., s., 15. v. 1962 & 29. ix. 63, leg. HAMMER, coll. EBERT.

Subfamily: *STYCTOPERINAE*

*Lophoptera illucida* WALKER

E. AFGHANISTAN: Sarobi, 1100 m, 4 exs., including ♀ Prep. WK. 5, 2—10. v. 1962, leg. HAMMER. The series includes 1 ex ab. *illucidana* STRAND.

Subfamily: *CATOCALINAE*

*Mormonia neonympa* HÜBN. ab. *cobaerens* SCHULTZE

E. AFGHANISTAN: Kabul Gorge, 22 km east of Kabul, 1650 m, 1 ex., 26. vi. 1966, leg. AMSEL & EBERT.

*Ephesia flavescens* HAMPSON

S. E. AFGHANISTAN: Safed Koh (south side), Kotkai, 2350 m, 1 ♂ (Prep. WK. 2) & 1 ♀, 14—23. vi. 1966, leg. EBERT.

*Mocis virbia* STOLL

E. AFGHANISTAN: Sarobi, 1100 m, 1 ex., 27. x. 1962, leg. HAMMER, coll. EBERT.

*Minucia bimaculata* OSTH. subsp. near *pulchrrior* WILTS.

A longer series may well shew that this form represents a good subspecies, as big as *pulchrrior* but of a more ochreous coloration; however, at present only one example is at present available.

E. AFGHANISTAN: Sarobi, 1100 m, 1 ♀, 24. iii. 1963, leg. HAMMER, coll. EBERT.

*Clytie syriaca* BUGN.

E. AFGHANISTAN: Kabul Gorge, 22 km east of Kabul, 1650 m, 1 ♂, 5—12. vi. 1966, leg. EBERT.

*Clytie devia* SWINHOE

E. AFGHANISTAN: Kabul Gorge, 22 km east of Kabul, 1650 m, 1 ♀, 5—15. vi. 1966, leg. H. G. AMSEL.

*Pericyma* (subg. *Alamis*) *umbrina* (GUENEE)

E. AFGHANISTAN: Sarobi, 1100 m, 7 ♂♀, 24. v. 1962 (2 exs.), 25. v. 62 (2 exs.), 2. v. 64, 1. xi. 62, & 31. x. 63, leg. HAMMER, coll. EBERT. Two of the variable series are ab. *albicincta* GUENEE.

*Pericyma squalens* LED.

S. W. AFGHANISTAN: Darweshan, Registan desert, 500 m, 18. v. 57, leg. EBERT.

*Heteropalpia* (*Cortyta*) *vetusta* (WALKER)

S. W. AFGHANISTAN: in addition to the example from Darweshan recorded in my 1961 work, there is a further example from Lashkar Gah (Dasht plain), 500 m, 14. v. 1957, leg. EBERT.

*Gnamptonyx vilis* WALKER.

E. AFGHANISTAN: Sarobi, 1100 m, 1 ♂ & 3 ♀♀, 19. viii. 57 & 29. vii. 62, leg. EBERT and HAMMER.

S.-E. AFGHANISTAN: Safed Koh (s. side), Kotkai, 2350 m, 14—23. vi. 66, 1 ♂, leg. EBERT

*Drasteria caucasica* (KOL.)

N. E. AFGHANISTAN: Badakhshan, Barak, 1600 m, 1 ♂, 1 ♀, 1. viii. & 10. vii. 1957, leg. EBERT.

*Drasteria flexuosa* (MEN.)

CENTRAL AFGHANISTAN: Koh-i-Baba (south-side), Shah-tu pass, 3000 m, 1 ♂, 17—18. vii. 1966, leg. EBERT.

E. AFGHANISTAN: Kabul Gorge, 22 km east of Kabul, 1650 m, 1 ♂ & 1 ♀, 5—12. vi. 66, leg. EBERT.

*Drasteria cailino* (LEF.)

E. AFGHANISTAN: Salang Pass (north side), Khinjan, 2100 m, 3 exs. 5—11. vii. 1966, leg. EBERT.

E. AFGHANISTAN: Kabul Gorge, 22 km east of Kabul, 1650 m, 2 exs., 5—12. vi. 66, leg. EBERT.

S. E. AFGHANISTAN: Safed Koh (south side), Kotkai, 2350 m, 9 exs., 14—23. vi. 66, leg. EBERT.

All of these belong to the usual unnamed Afghanistan form, varying in span from 30 to 40 mm; this form is neither typical *cailino*, nor *medialba* WILTS. The wider dark hind-wing band separates it from the former, and the brown fore-wing median band from the latter.

*Drasteria saisani* STGR.

E. AFGHANISTAN: Kabul Gorge, 22 km east of Kabul, 1650 m, 1 ex., 5—12. vi. 66, leg. AMSEL.

Subfamily: *OTHREINAE*

*Anomis sabulifera* GN.

E. AFGHANISTAN: Sarobi, 1100 m, 1 ex., 12. x. 1961, leg. HAMMER, coll. EBERT.

S.-E. AFGHANISTAN: Safed Koh (south side), Kotkai, 2350 m, 1 ex., leg. EBERT.

*Anomis mesogona* WALKER

E. AFGHANISTAN: Sarobi, 1100 m, 1 ex., 6. xi. 1961, leg. HAMMER, coll. EBERT.

*Hypersypnoides* (?) *submarginata* WALKER

S.-E. AFGHANISTAN: Safed Koh, (south side), Shahidan, 2700 m, 1 ♀, 21. vi. 66, leg. EBERT. According to BERIO, *submarginata* cannot be distinguished superficially from *astrigera* BUTLER, and as the one example available is a female, whose structures BERIO did not illustrate in his and FLETCHER's Revision (1958), it remains doubtful which of the two this example is. It has been compared with the type of *astrigera* and matches it well.

*Attonda adspersa* FELDER

E. AFGHANISTAN: Sarobi, 1100 m, 1 ♀, 22. viii. 62, leg. HAMMER, coll. EBERT.

*Lygephila lusoria* (L.)

E. AFGHANISTAN: Kabul Gorge, 23 km east of Kabul, 1650 m, 1 ex., 5—12. vi. 66, leg. EBERT. The form is smaller than the European but otherwise not unlike it, and certainly closer in colouring to the typical than to the forms in Iran.

*Lygephila craccae* SCHIFF.

S.-W. AFGHANISTAN: Kandahar, 950 m, 1 ex., 10. v. 57, leg. EBERT.

CENTRAL AFGHANISTAN: Koh-i-Baba (south side), Panjao, 1650 m, 1 ex., 20—22. vii. 66, leg. EBERT.

S.-E. AFGHANISTAN: Safed Koh, (south side), 1 ex. Kotkai, 2350 m, 14—23. vi. 66 & 1 ex., Shahidan, 2700 m, 21. vi. 66, leg. EBERT.

*Plecoptera reflexa* GUENEE

E. AFGHANISTAN: Sarobi, 1100 m, 1 ♂, 21. iv. 63, leg. HAMMER, coll. EBERT.

S.-E. AFGHANISTAN: Safed Koh (south side), Kotkai, 2350 m, 1 ex., 26. vii. 67 & 1 ex. 2 viii. 67, leg. EBERT.

*Acantholipes regularis* HÜBNER

EASTERN AFGHANISTAN: Sarobi, 1100 m, 2 exs., 22. viii. 1962 & 4. ix. 1967, leg. HAMMER, coll. EBERT; Kabul Gorge, 22 km east of Kabul, 1650 m, 2 exs., (Prep. WK. 4), 5—12. vi. 1966, leg. H. G. AMSEL & G. EBERT.

*Acantholipes circumdata* WALKER

EASTERN AFGHANISTAN: Sarobi, 1100 m, 1 ex. (Prep. WK. 11), 17. vii. 1964, leg. HAMMER, coll. EBERT.

*Acantholipes regulatrix* WILTSHIRE 1961

EASTERN AFGHANISTAN: Sarobi, 1100 m, 1 ex., 5. ix. 1963, leg. HAMMER, coll. EBERT.

*Anumeta cestina* STAUDINGER

SOUTH-WEST AFGHANISTAN: Arghandab Dam, 35 km north of Kandahar, 1 ex., 23. v. 1957, leg. G. EBERT.

*Drasteriodes limata* (CHRISTOPH)

NORTH-WESTERN AFGHANISTAN: Herat, 2 exs., 15 & 25. iv. 1957, leg. H. G. AMSEL.

*Armada dentata* STAUDINGER

NORTH-WESTERN AFGHANISTAN: Herat, 2 exs., 25. iv. & 5. v. 1957, leg. H. G. AMSEL.  
S. W. AFGHANISTAN: Registan desert, 500 m, 1 ex., 18. v. 1957, leg. G. EBERT. This form is ab. *afghana* HAMPSON, (described as a distinct species of *Acrobyla*!) in which the central band is divided into two closely adjacent sectors just below the origin of nervure 2 on the fore-wing.) HAMPSON's type in the British Museum has been examined and its genitalia are identical with those of typical *dentata*.

*Tarachephia clio* (STAUDINGER)

N. W. AFGHANISTAN: Shibarghan, 400 m, 1 ex., 22. v. 1956, leg. AMSEL.

S. W. AFGHANISTAN: Registan desert, 500 m, 1 ex., 18. v. 1957, leg. EBERT.

*Tarachephia hueberi* (ERSHOV)

N. W. AFGHANISTAN: Herat, 970 m, 1 ex., 5. v. 1956, leg. H. G. AMSEL.

S. W. AFGHANISTAN: Registan desert, Darweshan 500 m, 1 ex., 18. v. 1957; Arghandab Dam, 1150 m, 1 ex., 23. v. 1957, both leg. G. EBERT.

*Tarachephia panaceorum* (MEN.)

N. W. AFGHANISTAN: Herat, 970 m, 2 exs., 25. iv. & 5. v. 1957, leg. H. G. AMSEL.

*Perciana dentatus* HAMPSON (Textfig. 1)

This strikingly marked and little known species has the male more monotonously coloured on the fore-wing than the female, in which the very peculiar jutting distal edge of the median band is bordered with white clouds. At first glance one would take the moth for a *Cryphia*, if one overlooks the sickle-like upturned palps. Hitherto only known from N. India, it remains to be seen whether it is found in Afghanistan further west and further north. The genitalia are unlike those of the *Hypheninae* and are illustrated herewith in fig. 1.

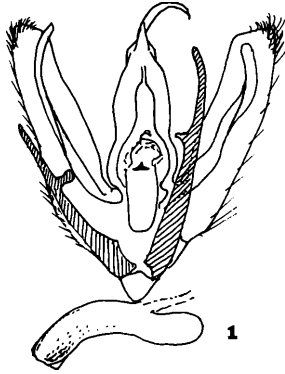


Fig. 1. *Perciana dentatus* HAMPSON male genitalia.

S. E. AFGHANISTAN: Safed Koh (south side), Kotkai, 2350 m, 2 ♂♂ (Prep. WK. 3) & 1 ♀, 14—23. vi. 1966, leg. G. EBERT.

*Zethes nemea* BRANDT

E. AFGHANISTAN: Sarobi, 1100 m, 2 exs., 12. & 14. iii. 1963, leg. HAMMER, coll. EBERT.

Sub-Family: *HYPENINAE*

*Dichromia* prob. *opulenta* ALPH.

Pending a revision of this genus it is not possible to be sure about this determination. They are slightly larger than the Central Asia *opulenta* forms but similarly marked. They come close to *amica* BUTLER in size but are more brightly marked. These two species might be conspecific. The species *quadralis* WALKER is also known from Afghanistan (Paghman Mts.) but is larger, with a more curving costa, than these examples which come both from the Paghman Mts., and the Safed Koh.

E. AFGHANISTAN: Paghman Mts., 2500 m, 3 exs., 20. vi. 1941, leg. FRED BRANDT;

S. E. AFGHANISTAN: Safed Koh, Shahidan, 2700 m, 2 exs., 21. vi. 1966, leg. G. EBERT.

*Nodaria externalis* GUENEE

S. E. AFGHANISTAN: Safed Koh (south side), Kotkai, 2350 m, 1 ♀, 14—25. vi. 1966, leg. G. EBERT.

*Hypena extensalis* GN.

S. E. AFGHANISTAN: Safed Koh (south side), Shahidan, 2700 m, 1 ex., 21. vi. 66, leg. EBERT.

*Rhynchina cramboides* BUTLER

S. E. AFGHANISTAN: Safed Koh (south side), Shahidan, 2700 m, 1 ex., 21. vi. 66, leg. EBERT.

*Rhynchina plusioides* BUTLER

S. E. AFGHANISTAN: Safed Koh (south side), Shahidan, 2700 m, 3 exs., 21. vi. 66, leg. EBERT.

*Rhynchodontodes revolutalis* Z.

N. W. AFGHANISTAN: Herat, 970 m, 15. iv. 1956, 1 ex., 5. v. 1956, 2 ex., & 1 ex., 5. vi. 1956, leg. H. G. AMSEL; E. AFGHANISTAN: Sarobi, 1100 m, 3 exs., ab. *transcaspica* BRANDT,

28. vi. & 3. vii. 56, leg. H. G. AMSEL; Gulbahar, 1700 m, 21. v. 56, 1 ex., leg. H. G. AMSEL; Tang-i-Garuh, Kabul R., 1 ex. ab. *transcaspica* BRANDT, 21. viii. 1952, leg. KLAPPERICH; Sarobi, 1100 m, 1 ex. ab. *transcaspica*, 28. v. 1957, leg. Frau Dr. WEGENER; N. E. AFGHANISTAN: Badakhshan, Faizabad, 1450 m, Kokscha-valley, 1 ex., 7. viii. 1953, leg. J. KLAPPERICH.

### Zusammenfassung

#### Quadrifine Noctuiden aus Afghanistan

Der vorliegende Beitrag befaßt sich mit den quadrifinen Noctuiden von Afghanistan und weist für dieses Faunengebiet 54 Arten aus insgesamt 7 Unterfamilien nach. Das Material wurde in den Jahren 1956—1966 von den Herren AMSEL, EBERT (Landessammlungen für Naturkunde Karlsruhe) und HAMMER in verschiedenen Teilen dieses Landes gesammelt. Der Autor nimmt zur taxonomisch-systematischen Wertigkeit verschiedener beschriebener Formen und Unterarten Stellung. So erhält die bisher als eigene Art aufgefaßte *Porphyrinia compuncta* LEDERER als Subspecies von *Porphyrinia albida* DUPONCHEL einen neuen Status, ein afghanisches Belegstück von *Minucia bimaculata* OSTHELDER wird als vermutlich neue Unterart nahe *pulchrior* WILTSHIRE angesprochen, *Acrobyla afghana* HAMPSON als eine Form von *Armada dentata* STAUDINGER erkannt und die Genitalmorphologie der wenig bekannten *Perciana dentatus* HAMPSON geklärt.

#### REFERENCES

- BERIO, E. & FLETCHER, D. S., 1958: Monografia dell' antico genere *Sypna* GUEN. (Ann. Mus. civ. Storia nat. Genova **70** 15 Nov. 323—402)
- WILTSHIRE, E. P., 1961: Ergebnisse der Deutsche Afghanistan-Expedition 1956 der Landessammlung für Naturkunde Karlsruhe. Middle East Lepidoptera XV: a second contribution to the Lepidoptera of Afghanistan. (Beitr. naturk. Forsch. SW-Deutschl. **19**, 3 337—371)
- WILTSHIRE, E. P., 1967: id. Middle East Lepidoptera XX. A third contribution to the fauna of Afghanistan. (ibidem, **26**, 3 137—169)

# ZOBODAT - [www.zobodat.at](http://www.zobodat.at)

Zoologisch-Botanische Datenbank/Zoological-Botanical Database

Digitale Literatur/Digital Literature

Zeitschrift/Journal: [Beiträge zur naturkundlichen Forschung in Südwestdeutschland](#)

Jahr/Year: 1971

Band/Volume: [30](#)

Autor(en)/Author(s): Wiltshire Edward Parr, Ebert Günter

Artikel/Article: [Middle East Lepidoptera XXIX: Noctuidae Quadrifinae 57-63](#)