



**Research article**

[urn:lsid:zoobank.org:pub:38CC4797-768A-44C5-8B85-EA3DCB6678CB](http://urn.lsid:zoobank.org:pub:38CC4797-768A-44C5-8B85-EA3DCB6678CB)

**Description of *Brooksia lacromae* sp. nov. (Tunicata, Thaliacea)  
from the Adriatic Sea**

Rade GARIĆ<sup>1</sup> & Mirna BATISTIĆ<sup>2,\*</sup>

<sup>1,2</sup>Institute for Marine and Coastal Research, University of Dubrovnik,  
Kneza Damjana Jude 12, 20000 Dubrovnik, Croatia.

<sup>1</sup> Email: [rade.garic@unidu.hr](mailto:rade.garic@unidu.hr)

\* Corresponding author: [mirna.batistic@unidu.hr](mailto:mirna.batistic@unidu.hr)

<sup>1</sup> [urn:lsid:zoobank.org:author:9FAD77DC-5B2B-4257-AFF1-0CCD4F750D74](http://urn.lsid:zoobank.org:author:9FAD77DC-5B2B-4257-AFF1-0CCD4F750D74)

<sup>2</sup> [urn:lsid:zoobank.org:author:92314F89-7560-412C-BAAB-8509A8012F60](http://urn.lsid:zoobank.org:author:92314F89-7560-412C-BAAB-8509A8012F60)

**Abstract.** *Brooksia lacromae* sp. nov. is described from zooplankton material collected at a marine monitoring station in the South Adriatic in the autumn of 2014. The description of both solitary and aggregate forms is given along with 18S rRNA and mitochondrial *cox1* sequence data that provides strong evidence that both forms belong to the same species. The described species is morphologically markedly different from *B. rostrata* (Traustedt, 1893) and *B. bernerii* van Soest, 1975, previously the only two species in the genus *Brooksia*. Genetic analysis based on 18S rRNA gene confirmed distinctness of *B. lacromae* sp. nov. from *B. rostrata* (1.5% uncorrected pairwise distance). The appendicularian *Fritillaria helenae* Bückmann, 1924, so far known from the Atlantic only, was found in the same samples as *B. lacromae* sp. nov. Co-occurrence of *B. lacromae* sp. nov. with an Atlantic appendicularian suggests an Atlantic or Western Mediterranean origin for this new taxon.

**Keywords.** *Brooksia lacromae* sp. nov., new species, climate changes, gelatinous zooplankton, *Fritillaria helenae*.

Garić R. & Batistić M. 2016. Description of *Brooksia lacromae* sp. nov. (Tunicata, Thaliacea) from the Adriatic Sea. *European Journal of Taxonomy* 196: 1–13. <http://dx.doi.org/10.5852/ejt.2016.196>

## Introduction

Thaliacea is a well investigated group, primarily because of their bloom potential and substantial grazing impact on phytoplankton communities (Madin & Deibel 1998; Andersen 1998). The last new species within the order Salpida were described 40 years ago (van Soest 1975), when, among other species, *Brooksia bernerii* van Soest, 1975 was described. *Brooksia bernerii* and *Brooksia rostrata* (Traustedt, 1893) are two morphologically very similar species that make up the genus *Brooksia* (van Soest 1975; Godeaux 1998). The blastozoid of *Brooksia bernerii* is unknown or identical to that of *Brooksia rostrata* (van Soest 1975). Both species are known from tropical and temperate parts of the Atlantic, Indian and Pacific Oceans and their ranges seem to overlap (van Soest 1975). In the Mediterranean there have been only three records of *Brooksia rostrata* (Sigl 1912; Fedele 1926; Batistić *et al.* 2014), while *Brooksia*

*berneri* has not been recorded. The last record of *Brooksia rostrata* was of a single oozoid in 2008 at Lokrum station (Batistić *et al.* 2014; Fig. 1). After the discovery of *Brooksia lacromae* sp. nov. in 2014, the material from 2008 is re-examined in this paper and it proved in fact to be an individual of *Brooksia lacromae* sp. nov.

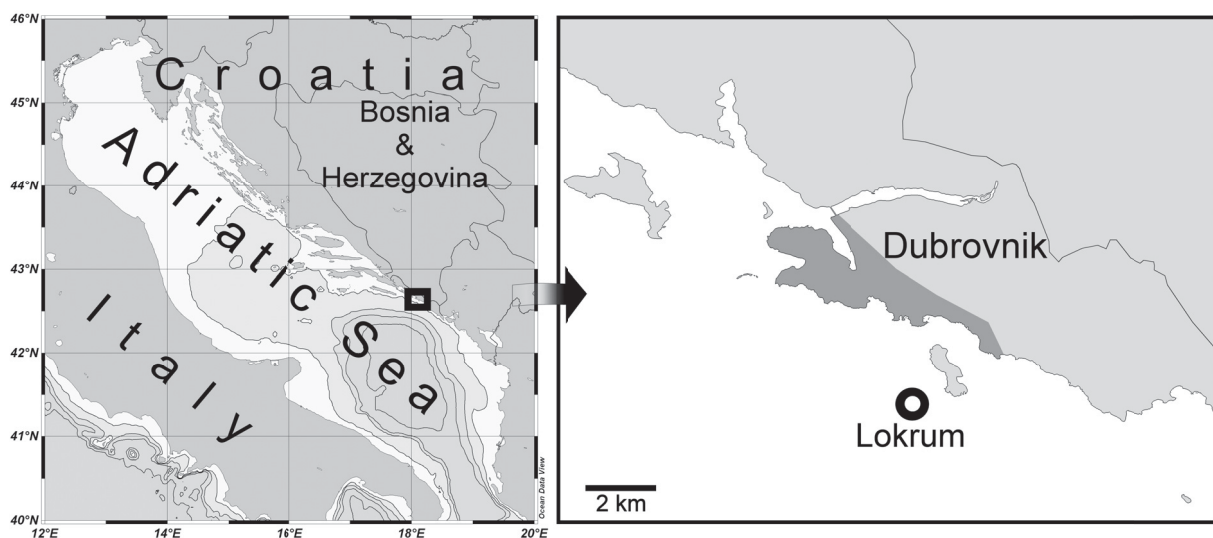
*Brooksia lacromae* sp. nov. was found in samples collected at the Lokrum station (South Adriatic, Fig. 1) in October 2014. The Lokrum station is located off the south-east Adriatic coast of Croatia where it is under the direct influence of incoming currents from the Ionian Sea. Such entering currents are known to modify Adriatic zooplankton community composition and to bring alien species of Atlantic/Western Mediterranean or Eastern Mediterranean/Lessepian origin into the Adriatic on a pluriannual scale (Batistić *et al.* 2014; Gačić *et al.* 2010; Civitarese *et al.* 2010).

The life cycle of salps consists of two alternating generations: the solitary asexual generation (oozooids) and the aggregate sexual generation (blastozooids), which morphologically differ greatly. Here, we describe both forms of *Brooksia lacromae* sp. nov. Given the considerable morphological differences between these reproductive forms, and the limited differences between *Brooksia* species in aggregate morphology, we also use genetic data to corroborate our descriptions. DNA sequences from both the nuclear ribosomal small subunit RNA (18S) and mitochondrial cytochrome oxidase subunit I (*cox1*) genes were generated, as these have previously been successfully used for integrative taxonomic research on closely related salp species (Goodall-Copestake 2014). Finally, we also discuss the potential origin of *Brooksia lacromae* sp. nov.

## Materials and methods

### Collection of zooplankton samples

Zooplankton samples were collected on 3 Oct. 2014 at the Lokrum station (42°37'21" N, 18°06'05"E; Fig. 1) by vertical tows using a 53 µm mesh (55 cm diameter, 250 cm length) and a 200 µm mesh (56.5 cm diameter, 340 cm length) Nansen net. The samples were collected in two layers: 0–50 m and 50–90 m. After collection, the samples for morphological analysis and analysis of planktonic tunicate community composition and abundance were preserved in 2.5% CaCO<sub>3</sub> buffered formaldehyde solution. Temperature and salinity at the time of sample collection were measured using a SBE 19plus CTD



**Fig. 1.** Position of the Lokrum station in the South Adriatic, where specimens of *Brooksia lacromae* sp. nov. were collected.

**Table 1.** PCR primers used for amplification of *B. lacromae* 18S rRNA and *cox1* gene fragments.

| Primer                          | 5'-3' sequence  | Reference                                  |
|---------------------------------|---|--|
| <b>18S</b>                      |   |  |
| app2f<br>n1800r                 | ATCTGGTTGATCCTGCCAGT<br>GATCCTTCCGCAGGTTACCT                              | modified from<br>Medlin <i>et al.</i> 1988 |
| 500f<br>1300f<br>1500r          | ATTGGAGGGCAAGTCTGGTG<br>GGTGGTGCATGGCCGTTCTTAG<br>CTAAGGGCATCACAGACCTG    | universal                                  |
| uni800r<br>oiko800f<br>app1200r | AGGTCTGCTTTGAACACTCTA<br>GAAAAAATTAGAGTGTTCAAAGC<br>CCGTGTTGAGTCAAATTAAGC | this study                                 |
| <b><i>cox1</i></b>              |   |  |
| coi-70f<br>coi-930r             | ATGTCTACTAATCATAAAGATATT<br>GCAGTAAAATAAGCACGAGAATC                       | this study                                 |

instrument (Seabird) from the surface to 90 m depth at every metre. The planktonic tunicate community composition was determined using an Olympus SZX-16 stereo microscope by analysis of entire zooplankton samples to the species level. The specimens of *B. lacromae* sp. nov. for morphological analysis were additionally stained with a few drops of 0.1% Janus Green dye, which made muscle bands clearly visible. Specimens were photographed using a DP25 (Olympus) digital camera mounted onto the stereo microscope and measured from the photographs using Cell<sup>D</sup> software (Olympus). In addition to formalin-fixed samples, material for genetic analysis was taken with a 53 µm mesh net from 90 m depth to the surface. The plankton material was then filtered through a 53 µm mesh to remove sea water and subsequently preserved in 95% ethanol, for no more than 2 days. The ethanol sample was sorted for *Brooksia lacromae* sp. nov. oozoids and blastozoids and then cleaned of attached debris using dissection needles. Cleaned salps were placed in separate tubes containing pure acetone for long-term storage at -20°C.

#### DNA isolation, PCR and sequencing

DNA was isolated from one oozoid individual (branchial bar tissue) and one blastozoid individual (muscle and test tissue). About 1–2 mm<sup>2</sup> of the tissue was cut and used for DNA isolation. After removal of acetone and drying the tissue for 20 min at 55°C, tissue fragments were lysed for 2 hours at 55°C in 30 µl of a solution containing 10 mM Tris-HCl pH 8.0, 0.5% SDS, and 0.5 mM EDTA, with the addition of 1.5 µl of 20 mg ml<sup>-1</sup> proteinase K (Fermentas). After lysis, the DNA was purified using the modified method described by Karatani *et al.* (2006) based on the anti-chaotropic effect of saturated (NH<sub>4</sub>)<sub>2</sub>SO<sub>4</sub> solution on DNA molecules. The lysate was mixed with five times the volume of saturated ammonium sulphate water solution and put in hand-made spin columns. The hand-made spin columns with glass filters were made by making two holes with a red hot needle in a 0.5 ml polypropylene tube, one in the cap and the other in the bottom of the tube. Two glass filters, 4 mm in diameter each, were then put in every column. The glass filters were cut out of GF/F (Whatmann) filter using a flame-sterilised hollow punch tool. After binding of DNA to the glass filters, the columns were washed with 300 µl of a buffer made by mixing 10 ml of 10 mM Tris (pH 7.5) with 40 ml of 96% ethanol. After drying the columns by centrifugation at maximum for 3 min, the DNA was eluted with 35 µl of TE buffer pH 8.0 (10 mM Tris, 1 mM EDTA).

**Table 2.** Planktonic tunicate community composition (ind. m<sup>-3</sup>) on 3 Oct. 2014 at Lokrum station using 200 µm and 53 µm mesh nets in 0–50 m and 50–90 m layers. Abbreviations: bls = blastozoid; ooz = oozyoid.

|   | 200-µm |       | 53-µm |       |
|---|--------|-------|-------|-------|
|   | 0–50   | 50–90 | 0–50  | 50–90 |
| <b>Appendicularia</b>                                   |        |       |       |       |
| <i>Oikopleura longicauda</i> (Vogt, 1854)               | 15.2   | 8.5   | 11.1  | 11.5  |
| <i>O. fusiformis</i> Fol, 1872                          | 21.5   | 6.7   | 7.4   | 9.5   |
| <i>O. cophocerca</i> (Gegenbaur, 1855)                  | 0.7    | 0.4   | 2.6   | 1.6   |
| <i>O. gracilis</i> Lohmann, 1896                        | 2.8    | 0.1   | 1.4   | 0.9   |
| <i>O. parva</i> Lohmann, 1896                           | 0.2    | 11.8  | 1.1   | 5.6   |
| <i>O. dioica</i> Fol, 1872                              | 0.2    |       | 0.2   | 0.4   |
| <i>Folia mediterranea</i> (Lohmann, 1899)               |        |       | 0.1   |       |
| <i>Stegosoma magnum</i> (Langerhans, 1880)              | 0.5    | 0.2   | 0.2   |       |
| <i>Mesoikopleura haranti</i> (Vernières, 1934)          | 1.1    | 0.4   | 0.1   | 0.3   |
| <i>Fritillaria haplostoma</i> Fol, 1872                 | 5.9    |       | 6.2   | 8.9   |
| <i>F. borealis sargassi</i> Lohmann, 1896               | 4.9    | 0.7   | 1.2   | 4     |
| <i>F. borealis intermedia</i> Lohmann, 1905             | 0.3    |       |       |       |
| <i>F. pellucida</i> (Busch, 1851)                       | 2.6    | 0.3   | 0.7   | 0.8   |
| <i>F. messanensis</i> Lohmann in Bückmann, 1924         | 0.8    |       | 1     | 0.5   |
| <i>F. formica tuberculata</i> Lohmann in Bückmann, 1926 | 1.2    | 0.4   | 0.4   | 0.9   |
| <i>F. formica digitata</i> Lohmann in Bückmann, 1926    | 1.0    |       | 0.1   | 0.6   |
| <i>F. megachile</i> Fol, 1872                           | 0.2    | 0.2   | 0.2   |       |
| <i>F. fraudax</i> Lohmann, 1896                         | 0.1    | 3.7   |       | 1.8   |
| <i>F. helenae</i> Bückmann, 1924                        | 0.3    |       |       | 0.4   |
| <i>Appendicularia sicula</i> Fol, 1874                  |        | 0.1   | 0.6   | 0.8   |
| <i>A. tregouboffi</i> Fenaux, 1960                      |        |       |       | 0.1   |
| <i>Kowalevskia tenuis</i> Fol, 1872                     | 0.5    |       |       |       |
| <i>K. oceanica</i> Lohmann, 1899                        | 0.4    | 0.2   | 1.1   | 1.4   |
| <b>Thaliacea</b>  |        |       |       |       |
| <i>Doliolina muelleri</i> (Krohn, 1852) (ooz)           | 2.6    | 0.7   | 1.4   | 0.2   |
| <i>D. muelleri</i> (Krohn, 1852) nurse                  | 0.2    |       |       |       |
| <i>Doliolum nationalis</i> Borgert, 1893 (bls)          | 1.3    | 0.1   | 0.1   |       |
| <i>Dolioletta gegenbauri</i> Uljanin, 1884 (bls)        | 0.9    |       | 0.1   |       |
| <i>Dolioloides rarum</i> (Grobber, 1882) (ooz)          | 0.3    | 0.2   | 0.2   |       |
| Doliolida larvae  | 0.4    | 0.1   | 0.2   |       |
| <i>Thalia orientalis</i> Tokioka, 1937 (ooz)            | 0.1    | 0.1   | 0.1   |       |
| <i>T. orientalis</i> (bls)                              |        | 0.1   | 0.1   |       |
| <i>Brooksia lacromae</i> sp. nov. (bls)                 | 0.2    | 0.9   | 0.5   | 0.4   |
| <i>Brooksia lacromae</i> sp. nov. (ooz)                 |        |       | 0.1   | 0.1   |

The 18S rRNA gene was PCR amplified and sequenced in four overlapping fragments using the primer pairs app2f-uni800r, 500f-app1200r, oiko800f-1500r, and 1300f-n1800r (Table 1); the overlap between any two fragments was 200–400 base pairs. The *cox1* fragment was amplified using primers coi-70f and coi-930r (Table 1), which were designed by aligning complete *cox1* sequences of multiple tunicate species available from GenBank.

The PCR was performed in a 100 µl PCR mix containing: 1 × PCR buffer, 0.2 mM of each dNTP, 3 mM MgCl<sub>2</sub>, 0.2 µM of each primer, 1.2 U of recombinant Taq polymerase (Thermo Scientific) and 2 µl of template DNA. All amplifications of 18S DNA were performed using a PCR programme with a 2 min denaturation step at 94°C, with 40 subsequent cycles of 94°C for 20 s, 50°C for 30 s, 72°C for 1 min, and a final extension step at 72°C for 5 min. The *cox1* fragment was amplified using a PCR programme with a 2 min denaturation step at 94°C, with 40 subsequent cycles of 94°C for 20 s, 45°C for 2 min, 72°C for 3 min, and a final extension step at 72°C for 5 min.

PCR products were purified for sequencing using the same method as for DNA isolation and eluted in 17 µl of 10 mM Tris buffer (pH 8.0).

All PCR products were sequenced by the Macrogen company (South Korea) in both directions using the same primers as used for original amplification. Obtained 18S rRNA and *cox1* gene sequences from an oozoid and a blastozoid were deposited in GenBank under accession numbers: KR057222 (oozoid 18S), KR057223 (blastozoid 18S), KT818685 (oozoid *cox1*) and KT818686 (blastozoid *cox1*).

#### DNA data analysis

Sequence assemblies from 18S overlapping fragments were made using the BioEdit software (Ibis Biosciences). Uncorrected pairwise distances were calculated between *B. lacromae* sp. nov. 18S sequences and a *B. rostrata* 18S sequence obtained from GenBank, as well as between different *B. lacromae* sp. nov. sequences. *Cox1* sequences were translated using ascidian mitochondrial genetic code to check for nuclear pseudogenes and no stop codons were detected.

## Results

### *Planktonic tunicate community composition*

A total of 29 species of planktonic tunicates was recorded on 3 Oct. 2014 at the Lokrum station (Table 2). Out of 29 species, there were 23 species of Appendicularia, four of Doliolida and two of Salpida. The most abundant appendicularians were *Oikopleura fusiformis* Fol, 1872, *Oikopleura longicauda* (Vogt, 1854), *Oikopleura parva* Lohmann, 1896 and *Fritillaria haplostoma* Fol, 1872. The most abundant doliolid was *Doliolina muelleri* Krohn, 1852. The most abundant salp was *Brooksia lacromae* sp. nov. (0.2–0.9 ind. m<sup>-3</sup>), while *Thalia orientalis* Tokioka, 1937 was found in low numbers (0–0.1 ind. m<sup>-3</sup>).

### *Systematics*

Phylum Chordata Haeckel, 1874  
Subphylum Tunicata Lamarck, 1816  
Class Thaliacea Van der Haeven, 1850  
Order Salpida Forbes, 1853  
Family Salpidae Lahille, 1888  
Genus *Brooksia* Matcalf, 1918

*Brooksia lacromae* sp. nov.

[urn:lsid:zoobank.org:act:2B9ACCBBD-8B20-437D-B013-468F8E956864](https://zoobank.org/act:2B9ACCBBD-8B20-437D-B013-468F8E956864)

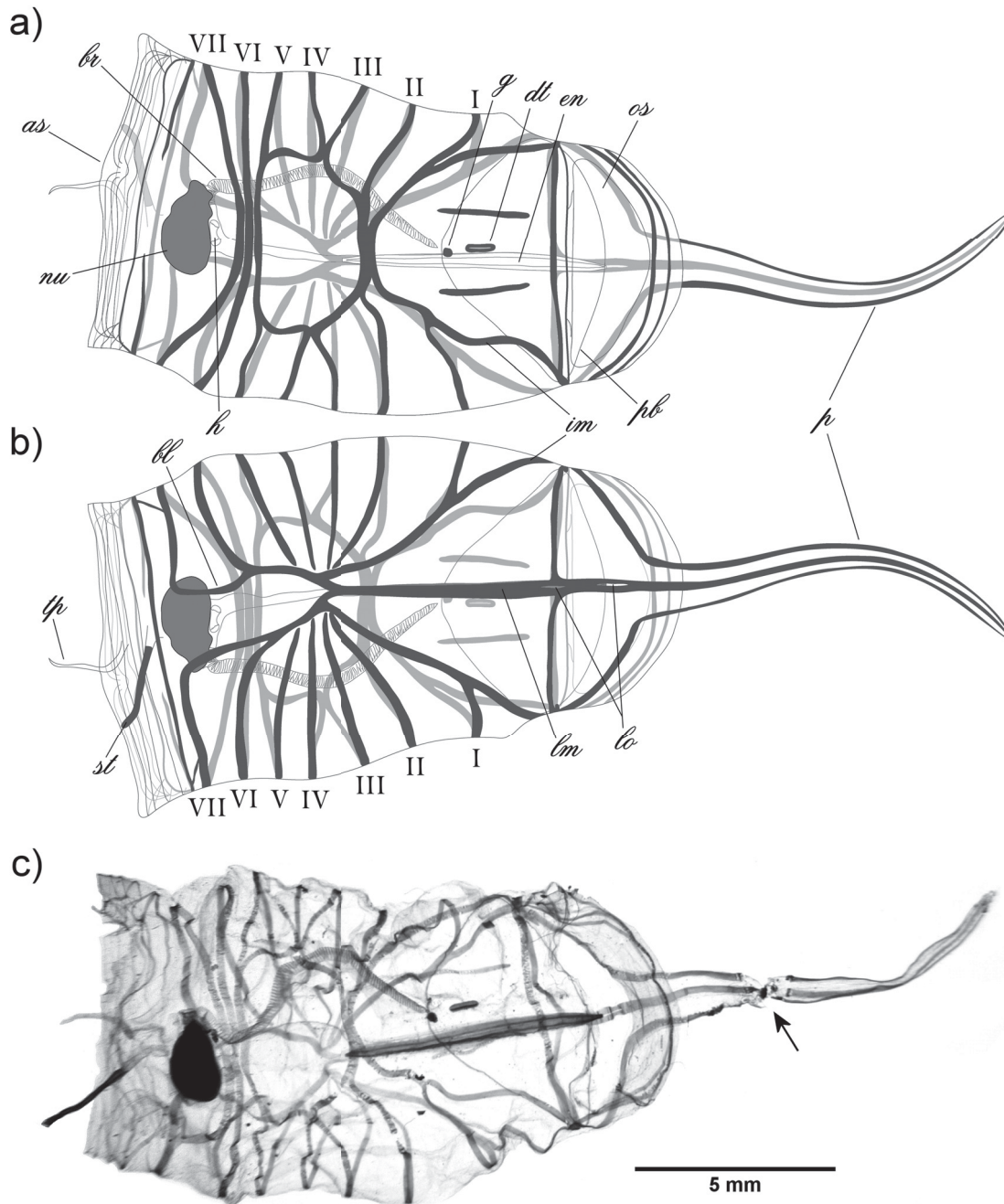
Figs 1–4

### Diagnosis

**Oozoid** (solitary form; Fig. 2)

Muscles II and III fuse dorsally before fusing with muscle I mid-dorsally. Muscles III and IV fuse briefly dorsolaterally. Muscles IV and V fuse before approaching muscles VI and VII mid-dorsally. There is one longitudinal ventral muscle which extends anteriorly into the proboscis. In addition, the proboscis

contains two lateral longitudinal muscles. The ventral longitudinal muscle branches posteriorly into two branches. There are two slit-like openings in the ventral longitudinal muscle, one below the anterior end of the endostyle, and the other slightly anteriorly from the first one. Muscle I fuses with branches of the

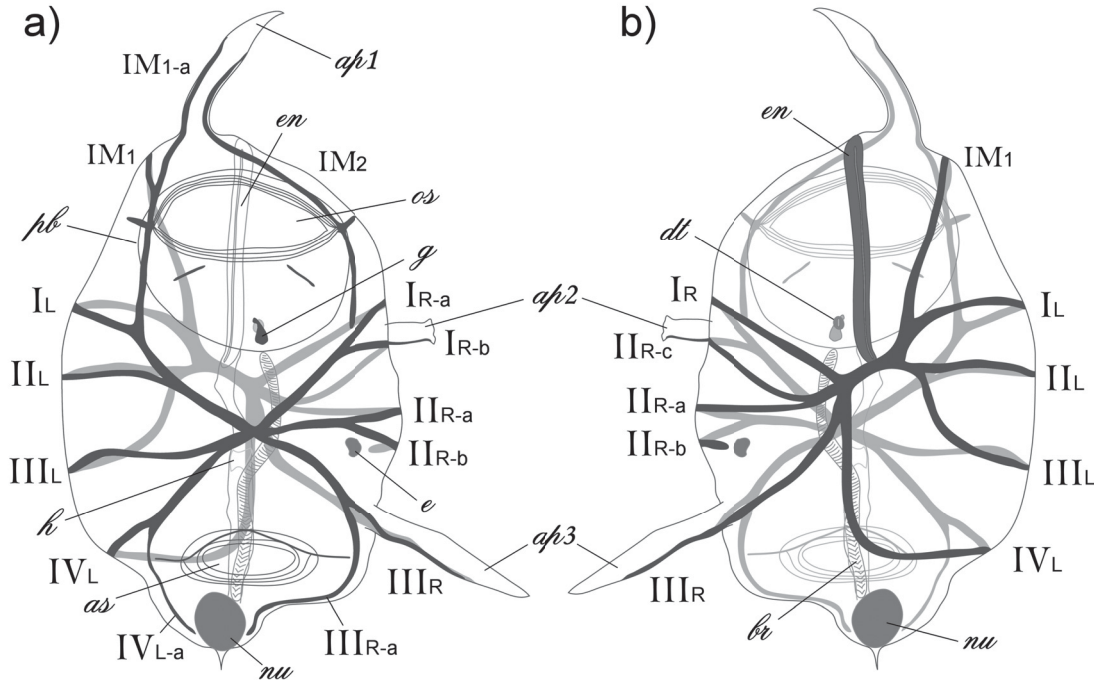


**Fig. 2.** Oozooid of *Brooksia lacromae* sp. nov. **A.** Dorsal view, drawing. **B.** Ventral view, drawing. **C.** Dorsal view, photograph of an individual dyed with Janus Green, with an arrow indicating breakage in the proboscis during collection. Abbreviations: as = atrial siphon; bl = branching of the ventral longitudinal muscle; br = branchial bar; dt = dorsal tubercle; en = endostyle; g = ganglion; im = intermediate muscle; lm = longitudinal muscle; lo = openings in the longitudinal muscle; nu = nucleus; os = oral siphon; p = proboscis; pb = peripharyngeal band; st = stolon; tp = test processus; I–VII = body muscles.

ventral longitudinal muscle at their anterior part, while muscles VI and VII fuse with them posteriorly. Muscles II, III, IV and V converge ventrally towards the junction between muscle I and the branches of the ventral longitudinal muscle. Muscle II can be slightly fused with muscle I just before its connection with branches of the ventral longitudinal muscle. Endostyle straight. Stolon emerges from the test ventrally, slightly posteriorly from the nucleus. There is one test processus just posteriorly from the stolon (Fig. 4D). Muscles I–VII with 52–58 muscle fibers in total, measured laterally in two examined individuals.

**Blastozoid** (aggregate form; Figs 3, 4A–C)

Sinistral individual – Four muscles on the left side, three muscles on the right side. Dorsal IM1 continues ventrally as the ventral muscle IM1, without extending to the anterior attachment processus (ap1). A branch of dorsal muscle IM1 (IM1-a) extends to the anterior attachment processus (ap1). Dorsal muscles IR, IIR and IIIR branch dichotomously. Dorsal muscle IR-a continues ventrally as ventral muscle IR. Dorsal muscle IR-b continues ventrally as muscle IIR-c. A small branch from muscle IR-b/IIR-c enters the lateral attachment processus (ap2). Dorsal muscle IIR-a continues ventrally as ventral muscle IIR-a. Muscle IIR-b ends blindly on the ventral side of the animal without entering the posterior attachment processus (ap3). Dorsal and ventral muscles IIIR enter the posterior attachment processus (ap3) without joining. Muscles IVL-a and IIIR-a extend from muscles IVL and IIIR, respectively, towards the nucleus. Endostyle curved anteriorly. Muscles IL-III<sub>L</sub>, IR-a,b and IIR-a,b,c with 3 muscle fibers each in all examined individuals. Muscle IVL with from 3 to 9 muscle fibers, muscle IIIR with from 5 to 7 muscle fibers.



**Fig. 3.** Drawing of the blastozoid of *Brooksia lacromae* sp. nov. (sinistral individual). **A.** Dorsal view. **B.** Ventral view. Abbreviations: ap1–3 = attachment processes; as = atrial siphon; br = branchial bar; dt = dorsal tubercle; e = embryo; en = endostyle; g = ganglion; h = heart; nu = nucleus; os = oral siphon; pb = peripharyngeal band; I<sub>L</sub>–IV<sub>L</sub> = left side muscles; I<sub>R</sub>–III<sub>R</sub> = right side muscles; IM<sub>1</sub> and IM<sub>2</sub> = intermediate muscles.

**Dextral individual**

Mirror image of sinistral individual.

**Etymology**

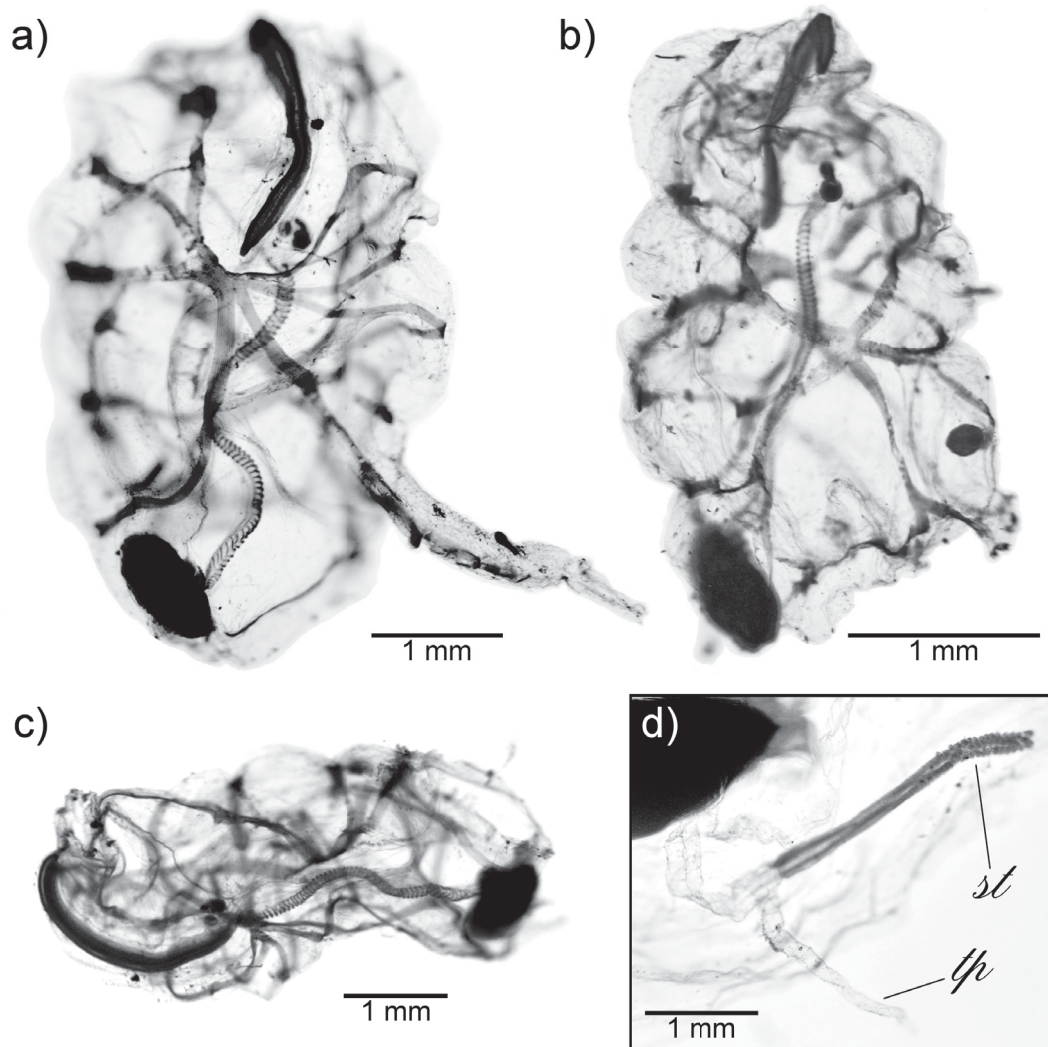
*Brooksia lacromae* sp. nov. is named after the island of Lokrum near which it has been found. The Latin name of the island of Lokrum is Lacroma.

**Material examined**

Two oozoids and 19 blastozoids.

**Holotype**

One oozoid (14.8 mm body length, 23.9 mm total length including proboscis), collected from a 0–50 m depth layer on 3 Oct. 2014 in a 53 µm mesh plankton net. It is deposited in the Tunicata collection of the Croatian Natural History Museum under inventory number CNHM Inv. br. 44/1.



**Fig. 4.** *Brooksia lacromae* sp. nov. **A.** Photograph of the ventral side of the dextral blastozoid. **B.** Photograph of the dorsal side of the sinistral blastozoid. **C.** Photograph of the lateral side of a blastozoid. **D.** Detail of the ventral posterior end of an oozoid. All individuals were dyed with Janus Green dye. Abbreviations: st = stolon; tp = test process.



### Allotype

One sinistral blastozoid (4.2 mm body length, without attachment processes), collected from a 0–50 m depth layer on 3 Oct. 2014 in a 53 µm mesh plankton net. It is deposited in the Tunicata collection of the Croatian Natural History Museum under inventory number CNHM Inv. br. 44/2

### Paratypes

One oozoid (11.5 mm body length, 18.2 mm total length including proboscis) and one dextral blastozoid (4.8 mm body length, without attachment processes), collected from a 50–100 m depth layer on 3 Oct. 2014 using a 53 µm mesh plankton net, deposited in the Institute for Coastal and Marine Research (University of Dubrovnik) under inventory number IMP-002; one dextral blastozoid (4.1 mm body length, without attachment processes) collected from a 0–50 m depth layer on 3 Oct. 2014 with a 200 µm mesh plankton net, deposited in the Dubrovnik Natural History Museum under inventory number PMD 2106.

### Other material

16 blastozoids deposited in the Institute for Coastal and Marine research (University of Dubrovnik) under inventory number IMP-003.

### Type locality

42°37'21"N, 018°06'05"E, off Dubrovnik, South Adriatic (Mediterranean Sea; Fig. 1).

The temperature average in the 0–50 m layer was 19.0°C, with a range between 16.2°C and 22.2°C, while the salinity average was 38.36, with a range between 37.79 and 38.68. In the 50–90 m layer the temperature average was 15.8°C, with a range between 15.5°C and 16.1°C, while the salinity average was 38.71, with a range between 38.67 and 38.77.

### Remarks

Oozoid. *Brooksia rostrata* and *Brooksia berneri* oozoids are very similar, differing only in the fact that in *B. berneri* oozoid muscle I, joined with the intermediate muscle (im), is separated from muscle II and discontinuous mid-dorsally. Due to this fact we will only compare the *B. lacromae* sp. nov. oozoid to the *B. rostrata* oozoid. The *Brooksia lacromae* sp. nov. oozoid has one ventral longitudinal muscle which extends into the proboscis, while *B. rostrata* has two (Fig. 2). The proboscides in both collected oozoids broke off during collection, but were found in the sample (Fig. 2c). The proboscis of *Brooksia lacromae* sp. nov. seems to be thinner at the base than in *Brooksia rostrata* and in both species it contains two lateral longitudinal muscles. The ventral longitudinal muscle in *B. lacromae* sp. nov. has two small slit-like openings anteriorly, one below the endostyle and the other just anteriorly to it, partly overlapping with the anterior end of the endostyle. In *Brooksia lacromae* sp. nov., in contrast to *B. rostrata*, body muscles are not arranged in a barrel-like structure where muscles are perpendicular to the body axis dorsally, as well as ventrally, but they converge to the posterior third of the body. Only muscles I, VI and VII fuse with the branches of the ventral longitudinal muscle, while muscles II, III, IV and V converge to the connection between muscle I and branches of the ventral longitudinal muscle, without fusing with either. Only muscle II can sometimes be slightly connected with muscle I ventrally. The stolon in *Brooksia lacromae* sp. nov. seems to emerge from the test, slightly posteriorly from the nucleus (Fig. 4D), while in *B. rostrata* it emerges from the anterior part of the nucleus (Thompson 1948).

Blastozoid (sinistral individual). The *Brooksia lacromae* sp. nov. and *Brooksia rostrata* blastozoids are very similar. In *Brooksia lacromae* sp. nov., muscle IIR-b ends blindly on the ventral side of the animal without entering the posterior attachment processus (ap3), while in *Brooksia rostrata* it enters the posterior attachment processus (ap3). The left intermediate muscle (IM1) in *Brooksia lacromae* sp. nov. is continuous dorsally and ventrally. Its branch IM1-a enters the anterior attachment processus (ap1). In

*Brooksia rostrata* the left intermediate muscle is discontinuous. Its dorsal and ventral counterparts both enter the anterior attachment processus. Because of this, the anterior attachment processus in *B. lacromae* sp. nov. possesses two muscles (IM1-a and IM2), while in *B. rostrata* it possesses three muscles (dorsal and ventral left intermediate muscle and right intermediate muscle). According to Thompson (1948), the right intermediate muscle of the sinistral individual of *B. rostrata* ends blindly, while after Tokioka (1954) and Godeaux (1998) it connects to muscle I. In *B. lacromae* sp. nov. the right intermediate muscle (IM2) ends blindly.

### Genetic analysis

There were no differences between blastozoid and oozoid 18S sequences. Between two *cox1* sequences there were 7 substitutions out of 837 nucleotides, which results in 0.84% uncorrected pairwise distance. *Cox1* sequences were translated using ascidian mitochondrial code and there were no differences in amino acid sequence between them. The uncorrected pairwise distance between the *Brooksia rostrata* 18S sequence (HQ015403) and the *Brooksia lacromae* sp. nov. 18S sequence (KR057223) was 1.5% (including gaps). Out of 26 differences in 1740 nucleotides between these two sequences, there were 21 transitions, 4 transversions and one single nucleotide gap.

### Discussion

In the Mediterranean there are only two finds of *Brooksia rostrata* according to our knowledge. The first record was in 1911 on the eastern side of the Middle Adriatic (Sigl 1912) and the second from the Gulf of Naples (Fedele 1926). The find of *B. rostrata* in the South Adriatic in 2008 (Batistić *et al.* 2014) proved to be in fact an individual of *B. lacromae* sp. nov., after careful examination of one oozoid in poor condition. It thus seems that *Brooksia* species are rarely recorded in the Mediterranean.

Recent investigations have shown that entering currents, of either Atlantic/Western Mediterranean or Eastern Mediterranean origin, modify the composition of the gelatinous zooplankton community in the South Adriatic and each type of current brings different newcomers (Batistić *et al.* 2014). According to a recently postulated BiOS theory, the entrance of different water masses into the Adriatic depends on the direction of circulation of the North Ionian Gyre (Civitarese *et al.* 2010; Gačić *et al.* 2010). The finding of the appendicularian *Fritillaria helenae* Bückmann, 1924, so far only known from the Atlantic, in the same samples as *Brooksia lacromae* sp. nov., suggests that *B. lacromae* sp. nov. is of either Atlantic or Western Mediterranean origin. In addition to *F. helenae*, *Kowalevskia oceanica* Lohmann, 1899 and *Fritillaria formica digitata* Lohmann in Lohmann & Buckmann, 1926 were found in the same samples, which is their first peer-review published record from the Adriatic (Garić & Batistić 2013). *Fritillaria fraudax* Lohmann, 1896, a rare appendicularian in the Adriatic as well as in the Mediterranean (Skaramuca 1980; Fenaux 1967; Fenaux *et al.* 1998), was found in high numbers, which might also be related to the increased inflow of water of Atlantic or Western Mediterranean origin. Curiously, the oozoids of *Brooksia lacromae* sp. nov. were only found in a 53 µm mesh net, which suggests that the filtration speed in a 200 µm mesh net may be too high to preserve the delicate oozoid body.

The morphological differences between *Brooksia rostrata* and *Brooksia lacromae* sp. nov. are quite high for congeneric salp species (Godeaux 1998). The number of oozoid body muscles is the same in both species but their dorsal fusing pattern and overall arrangement is markedly different. In *B. rostrata* body muscles are parallel to each other and they fuse ventrally with the two longitudinal ventral muscles, forming a barrel-like pattern. In *B. lacromae* sp. nov. body muscles converge ventrally to the posterior third of the body and, except for muscles I, VI and VII, they don't fuse with the single longitudinal ventral muscle or its branches. The blastozoids are much more similar. There are only two differences between *B. rostrata* and *B. lacromae* sp. nov. blastozoids. In *B. rostrata* the muscle IM1 enters the anterior attachment processus and the muscle IIR-b enters the posterior attachment processus, while in

*B. lacromae* sp. nov. only a branch of the first intermediate muscle (IM1-a) enters the anterior attachment processus (ap1) and the muscle IIR-b does not enter the posterior attachment processus (ap3). Tokioka (1954) described a long testicular processus emerging from the posterior end of mature blastozooids of *B. rostrata*. No such structure could be seen in examined *B. lacromae* sp. nov. blastozooids, but that is perhaps due to their immaturity.

The 18S rRNA gene is very conservative and tends to underestimate the number of species when used in biodiversity studies (Tanga *et al.* 2012; Raupach *et al.* 2010). It is generally used for phylogenies of distant species or higher taxonomic groups. The pairwise distance of 1.5% between *B. rostrata* and *B. lacromae* sp. nov. 18S sequences was higher than most intrageneric species distances of Thaliacea (Govindarajan *et al.* 2011), supporting the designation of *B. rostrata* and *B. lacromae* sp. nov. as separate species. In addition to 18S sequence data, *cox1* sequences from *B. lacromae* sp. nov. are also provided. Although only one oozoid and one blastozoid sequence were generated, the pairwise difference between them was consistent with expectations for intra-specific divergences in salps (cf. Goodall-Copestake 2014). There are only a few published thaliacean *cox1* sequences (Yokobori *et al.* 2005; Leray *et al.* 2013; Goodall-Copestake 2014), mainly because of their high evolutionary rate, which makes common universal *cox1* primers unusable. The *cox1* sequences generated for the present study will aid in the future identification of *B. lacromae* sp. nov. as well as help with further refinements of Thaliacea-specific *cox1* PCR primers.

In the last couple of years two new species of gelatinous zooplankton were described from the Adriatic Sea (Garić & Batistić 2011; Piraino *et al.* 2014), while one species was re-established more than 100 years after its first description (Batistić & Garić 2016). This incidence of new species of gelatinous zooplankton in the Adriatic is likely partly due to climate change, with more and more alien species entering the Adriatic (Batistić *et al.* 2014), and partly as a consequence of poor quality investigations of marine zooplankton at the species level (Batistić & Garić 2016). In order to improve our ability to detect climate-induced changes in marine ecosystems in the future, we suggest more research effort be placed on taxonomically challenging groups such as the gelatinous zooplankton described here.

## Acknowledgements

Thanks to Dr. Per Flood (Bergen, Norway) for providing us with Janus Green dye which was used for dyeing *Brooksia lacromae* sp. nov. muscles. Many thanks to Nikola Arkulin for sampling assistance during the rough sea. This research was supported by the Croatian Science Foundation (grant number: HRZZ IP-2014-09-2945).

## References

- Andersen V. 1998. Salp and pyrosomid blooms and their importance in biogeochemical cycles. *In*: Bone Q. (ed.) *The Biology of Pelagic Tunicates*: 125–137. Oxford University Press, Oxford.
- Batistić M. & Garić R. 2016. The case of *Bougainvillia triestina* Hartlaub 1911 (Hydrozoa, Cnidaria), a 100-year-long struggle for recognition. *Marine Ecology* 37 (1): 145-154. <http://dx.doi.org/10.1111/maec.12270>
- Batistić M., Garić R. & Molinero J.C. 2014. Interannual variations in Adriatic Sea zooplankton mirror shifts in circulation regimes in the Ionian Sea. *Climate Research* 61: 231–240. <http://dx.doi.org/10.3354/cr01248>
- Civitaresse G., Gačić M., Lipizer M. & Eusebi Borzelli G.L. 2010. On the impact of the bimodal oscillating system (BIOS) on the biogeochemistry and biology of the Adriatic and Ionian Seas (Eastern Mediterranean). *Biogeosciences* 7: 3987–3997. <http://dx.doi.org/10.5194/bg-7-3987-2010>

- Fedele M. 1926. Thaliacea nuovi o rari del Golfo di Napoli. *Bollettino della Società dei Naturalisti in Napoli* 37: 291–300.
- Fenaux R. 1967. *Les appendiculaires des mers d'Europe et du Bassin Méditerranéen*. Faune de l'Europe et du Bassin Méditerranéen 2. Masson et Cie, Paris.
- Fenaux R., Bone Q. & Deibel D. 1998. Appendicularian distribution and zoogeography. In: Bone Q. (ed.) *The Biology of Pelagic Tunicates*: 251–264. Oxford University Press, Oxford.
- Gačić M., Eusebi Borzelli G.L., Civitarese G., Cardin V. & Yari S. 2010. Can internal processes sustain reversals of the ocean upper circulation? The Ionian Sea example. *Geophysical Research Letters* 37: L09608. <http://dx.doi.org/10.1029/2010GL043216>
- Garić R. & Batistić M. 2011. *Fritillaria ragusina* sp. nov., a new species of Appendicularia (Tunicata) from the Adriatic Sea. *Journal of the Marine Biological Association of the United Kingdom* 90: 555–559. <http://dx.doi.org/10.1017/S0025315409991627>
- Garić R. & Batistić M. 2013. Review of appendicularian biodiversity in the Adriatic. In: de Lange G.J., Gačić M., Romaña A., da Costa M., Boero F., Turan C., & Sala E. (eds) *40th CIESM Congress Proceedings*: 544. CIESM, Monaco. Available from [http://ciesm.org/online/archives/abstracts/pdf/40/P\\_G\\_0544.pdf](http://ciesm.org/online/archives/abstracts/pdf/40/P_G_0544.pdf) [accessed 3 May 2016]
- Godeaux J. 1998. The relationships and systematics of the Thaliacea, with keys for identification. In: Bone Q. (ed.) *The Biology of Pelagic Tunicates*: 273–294. Oxford University Press, Oxford.
- Goodall-Copestake W.P. 2014. Morphological and molecular characterization of salps (*Thalia* spp.) from the Tristan da Cunha archipelago. *Journal of Plankton Research* 36 (3): 883–888. <http://dx.doi.org/10.1093/plankt/fbu013>
- Govindarajan A.F., Bucklin A. & Madin L.P. 2011. A molecular phylogeny of the Thaliacea. *Journal of Plankton Research* 33 (6): 843–853. <http://dx.doi.org/10.1093/plankt/fbq157>
- Karatani H., Miyamoto K., Katsukawa C., Kono T. & Minakuchi H. 2006. Novel method for DNA isolation using high-throughput monolithic silica gel column in combination with anti-chaotropic effect. *Chemistry Letters* 35: 1354–1355. <http://dx.doi.org/10.1246/cl.2006.1354>
- Leray M., Yang J.Y., Meyer C.P., Mills S.C., Agudelo N., Ranwez V., Boehm J.T. & Machida R.J. 2013. A new versatile primer set targeting a short fragment of the mitochondrial COI region for metabarcoding metazoan diversity: application for characterizing coral reef fish gut contents. *Frontiers in Zoology* 10: 34. <http://dx.doi.org/10.1186/1742-9994-10-34>
- Madin L.P. & Deibel D. 1998. Feeding and energetics of Thaliacea. In: Bone Q. (ed.) *The Biology of Pelagic Tunicates*: 81–103. Oxford University Press, Oxford.
- Medlin L., Elwood H.J., Stickel S. & Sogin M.L. 1988. The characterization of enzymatically amplified eukaryotic 16S-like rRNA-coding regions. *Gene* 71: 491–499. [http://dx.doi.org/10.1016/0378-1119\(88\)90066-2](http://dx.doi.org/10.1016/0378-1119(88)90066-2)
- Piraino S., Aglieri G., Martell L., Mazzoldi C., Melli V., Milisenda G., Scorrano S. & Boero F. 2014. *Pelagia benovici* sp. nov. (Cnidaria, Scyphozoa): a new jellyfish in the Mediterranean Sea. *Zootaxa* 3794 (3): 455–468. <http://dx.doi.org/10.11646/zootaxa.3794.3.7>
- Raupach M.J., Astrin J.J., Hannig K., Peters M.K., Stoeckle M.Y. & Wägele J.-W. 2010. Molecular species identification of Central European ground beetles (Coleoptera: Carabidae) using nuclear rDNA expansion segments and DNA barcodes. *Frontiers in Zoology* 7: 26. <http://dx.doi.org/10.1186/1742-9994-7-26>

Sigl A. 1912. Adriatische Taliaceenfauna. *Sitzungsberichte der mathematisch-naturwissenschaftlichen Klasse* 121 (1): 463–508.

Skaramuca B. 1980. *The Qualitative and Quantitative Distribution of the Appendicularian Populations in the Adriatic Sea*. PhD Thesis, University of Zagreb, Croatia. [in Croatian]

Tanga C.Q., Leasi F., Obertegger U., Kieneke A., Barraclough T.G. & Fontaneto D. 2012. The widely used small subunit 18S rDNA molecule greatly underestimates true diversity in biodiversity surveys of the meiofauna. *Proceedings of the National Academy of Sciences of the United States of America* 109: 16208–16212. <http://dx.doi.org/10.1073/pnas.1209160109>

Thompson H. 1948. *Pelagic Tunicates of Australia*. Commonwealth Council for Scientific and Industrial Research, Melbourne.

Tokioka T. 1954. Descriptions on the aggregated form of *Brooksia rostrata* (Traustedt), an insufficiently known salpa. *Publications of the Seto Marine Biological Laboratory* 4 (1): 147–153.

van Soest R.M.W. 1975. Observation on taxonomy and distribution of some salps (Tunicata, Thaliacea), with descriptions of three new species. *Beaufortia* 23: 105–129.

Yokobori S., Oshima T. & Wada H. 2005 Complete nucleotide sequence of the mitochondrial genome of *Doliolum nationalis* with implications for evolution of urochordates. *Molecular Phylogenetics and Evolution* 34 (2): 273–283. <http://dx.doi.org/10.1016/j.ympev.2004.10.002>

*Manuscript received: 25 September 2015*

*Manuscript accepted: 11 January 2016*

*Published on: 12 May 2016*

*Topic editor: Rudy Jocqué*

*Desk editor: Kristiaan Hoedemakers*

Printed versions of all papers are also deposited in the libraries of the institutes that are members of the *EJT* consortium: Muséum national d'Histoire naturelle, Paris, France; Botanic Garden Meise, Belgium; Royal Museum for Central Africa, Tervuren, Belgium; Natural History Museum, London, United Kingdom; Royal Belgian Institute of Natural Sciences, Brussels, Belgium; Natural History Museum of Denmark, Copenhagen, Denmark.

# ZOBODAT - [www.zobodat.at](http://www.zobodat.at)

Zoologisch-Botanische Datenbank/Zoological-Botanical Database

Digitale Literatur/Digital Literature

Zeitschrift/Journal: [European Journal of Taxonomy](#)

Jahr/Year: 2016

Band/Volume: [0196](#)

Autor(en)/Author(s): Garic Rade, Batistic Mirna

Artikel/Article: [Description of \*Brooksia lacromae\* sp. nov. \(Tunicata, Thaliacea\) from the Adriatic Sea 1-13](#)