

Phyton (Austria)	Vol. 17	Fasc. 3—4	319—328	18. 8. 1976
------------------	---------	-----------	---------	-------------

## „Genus *Coleostephus* Cassini in Europe“ (Asteraceae)

By

Sifat A. ALAVI \*)

### Summary

The history, taxonomy and nomenclature of the 3 European species of the genus *Coleostephus* is explained. *Coleostephus paludosus* is a new combination.

### Zusammenfassung

Geschichte, Systematik und Nomenklatur der Gattung *Coleostephus* werden dargestellt. *Coleostephus paludosus* ist eine neue Kombination.

Linnaeus (1763) in the second edition of "Species Plantarum" described *Chrysanthemum myconis* L. from Spain. Post-Linnaean authors gave various treatments to the plants referable to this species. While some like GRENIER & GODRON (1850), BOISSIER (1875) and BENTHAM (1875) accepted the Linnaean disposition for this species with minor changes, others like MOENCH (1802), HOFFMANSEGG & LINK (1825), SPRENGEL (1826) and DE CANDOLLE (1838) transferred it to *Pyrethrum* ZINN. Still others like CASSINI (1826), WILLKOMM (1865), SCHULTZ Bipontinus (1842) and BRIQUET & CAVILLIER (1916) transferred it to a genus of its own; the first two relegated it to *Coleostephus* CASSINI while the other two changed the generic name to *Myconia* SCH. BIP.

In 1846 DURIEU described a species very closely related to *C. myconis* under a new genus *Kremeria* as *K. paludosa* DURIEU, while describing another related species in the genus *Coleostephus* as *C. macrotus* DURIEU. The plants referable to the latter species were described by KUNZE in the same year under a new generic name *Glossopappus* as *G. chrysanthemoides* KUNZE. WILLKOMM (1865) and BRIQUET & CAVILLIER (1916) also followed KUNZE in keeping *C. macrotus* DURIEU under *Glossopappus* KUNZE.

---

\*) Sifat A. ALAVI, Faculty of science, University of Tripoli.

GIROUX (1930) demonstrated that contrary to the claims of BRIQUET & CAVILLIER (1916), on the basis of the micro-morphological characters of the cypsela and the orientation of the cotyledons in the cypsela, *C. myconis* is much closer to that of *Leucanthemum*. Further, *C. myconis* and *C. macrotus* on the basis of these characters form a natural group. HARLING (1951) has shown that *Chrysanthemum* sensu BRIQUET & CAVILLIER (except *C. viscidohirtum* (SCHOTT) THELLUNG), *Leucanthemum*, *C. myconis* and *C. macrotus* have monosporic embryo sac. He suggested that on the basis of the cypselar morphology and orientation of the cotyledons, the latter two species should be included in the genus *Leucanthemum*.

HEYWOOD (1958) following the evidence put forward by GIROUX (loc. cit.) and HARLING (loc. cit.) treated this group of species as a part of *Leucanthemum*. He grouped *C. myconis* and related species, *C. clausonis*, under the genus *Leucanthemum* sub-genus *Kremeria* (DURIEU) HEYWOOD while separating another related species namely *C. macrotus* at a subgeneric level of its own, namely *Leucanthemum* sub-genus *Glossopappus* (KUNZE) HEYWOOD.

The presence of the satellite genera in the *Chrysanthemum* and *Leucanthemum* complex present great difficulties of judgement in the circumscription of the genera in this natural group. Though a careful study of the literature shows that at present there is considerable agreement in assigning the species of this complex to natural or nearly natural groups, either at the sectional, sub-generic or generic level, the taxonomic status of these natural groups still is a matter of personal preference of a taxonomist. ALAVI (1970) has shown that when the *Chrysanthemum*-like, *Leucanthemum*-like and *Tanacetum*-like characters of the satellite genera of this complex are tabulated then these satellite genera have the same small number of characters common with each of these three genera. Further the contents of each satellite genus are very homogeneous in themselves. Thus any attempt to unite either them with each other or with any three major genera of the complex would produce a too heterogeneous group. He further advocated that in such natural complexes if the size of genera is small, then they would be more homogeneous. He also advocated that as in this particular complex the stability of the nomenclature was not at any serious risk and as there is a considerable agreement in recognising *Chrysanthemum* and *Tanacetum* at generic level among authorities, therefore it would be more consistent to treat the intermediate or satellite natural groups of the species at a generic level.

When *Chrysanthemum*-like and *Leucanthemum*-like characters are tabulated for the plants referable to *C. myconis*, *C. clausonis* and *C. macrotus* (table 1) it becomes clear that they share equal number of characters with either genus. Thus the present author has not been able to uphold HARLING's (1951) view that these species should be considered as a component of the genus *Leucanthemum*.

Table 1

*Chrysanthemum*-like and *Leucanthemum*-like characters of the genus  
*Coleostephus* CASSINI

<i>Chrysanthemum</i> -like characters	<i>Leucanthemum</i> -like characters
i. Annual	i. Heterogamous capitula
ii. Heterogamous capitula	ii. Homomorphic cypsela
iii. Ligulate florets yellow	iii. Cypselas 10-ribbed
iv. Basal tube of the ray florets strongly compressed	iv. Cypselas with epicarpic mucilagenous cells and resiniferous canals

HEYWOOD'S (1958) treatment of *Leucanthemum* in Portugal, while appearing consistent within the context of the restricted geographical distribution of the species he considered, however is not tenable when all the European species of the genus are considered together. In fact, at present, any attempt to group the European species of *Leucanthemum* into natural sections or at any other infra-generic level, usually leads to the production of artificial groups. Further, his treatment of the species in question does not appear logical as *C. myconis* and *C. clausonis* are segregated at a sub-generic level from a related species namely *C. macrotus*.

BOHLMANN et al. (1964) have shown in a study of Acetylenic compounds in the genus *Chrysanthemum* L. sensu lato that on the bases of various acetylenic substances present in the roots and leaves, the components of the genus fall into four groups, which more or less correspond to the genera *Tanacetum* L., *Leucanthemum* Miller and *Chrysanthemum* L. sensu stricto and the fourth group comprising of *Chrysanthemum myconis* L., *C. multicaule* Desf. (a native of North Africa) and *C. flosculosum* L.

In the light of the preceding discussion it appears logical to consider the three European species namely *C. myconis*, *C. clausonis* and *C. macrotus* in a genus of their own i. e. *Coleostephus*, which can be differentiated from *Leucanthemum* on the basis of the following characters:

1. All of them are annuals
2. Capitula have neutral ray florets
3. Cypselas have characteristic basal callus
4. Ovaries of the ray florets have typical sheathing pappus.

Summary of the treatment of the European *Coleostephus*:

*Coleostephus* CASSINI, Dict. Sci. Nat. 41: 43 (1826); Willk. in WILLK. & LANGE, Prodr. Fl. Hisp. 2: 105 (1865); TZVELEV in KOMAROV, Fl. URSS. 26: 146 (1961).

Syn.:

*Myconia* Sch. Bip. in Webb & Berth., Phyt. Canar. 2: 247 (1842) ...



non *Miconia* Ruiz & Pavón (1794); Briq. & Cavillier in Burnat, Fl. Alp. Marit. 6: 77 (1916) nom. invalid.

*Kremeria* Durieu in Duchartre, Rev. Bot. 1: 364 (1846).

*Glossopappus* Kunze, Flora 47: 748 (1846).

*Chrysanthemum* L. sect. *Coleostephus* (Cassini) Benth in Benth & Hooker, Gen. Pl. 2: 425 (1873).

*Myconella* Sprague, Kew Bull. 1928: 269 (1928).

Key to the sections and species:

1. Disc florets slightly zygomorphic; pappus twice as long as the cypselas, enclosing the disc florets..... sect. *Glossopappus*  
\* *C. macrotus*
1. Disc florets actinomorphic; pappus as long as or shorter than the cypselas ..... sect. *Coleostephus*
2. Cypselas 1.2—1.8 mm long with a thick basal callus; pappus about as long as the cypselas, sheathing ..... \* *C. myconis*
2. Cypselas much smaller than the preceding species, basal callus small; pappus coroniform ..... *C. paludosus*

Sect. *Coleostephus*

Syn.:

*Coleostephus* Cassini, Dict. Sci. Nat. 41: 43 (1826) sensu stricto; Willk. in Willk. & Lange, Prodr. Fl. Hisp. 2: 105 (1865).

*Chrysanthemum* L. sect. *Coleostephus* (Cassini) Benth in Benth & Hooker, Gen. Pl. 2: 425 (1873).

*Kremeria* Durieu in Duchartre, Rev. Bot. 1: 364 (1846).

*Leucanthemum* Miller subgen. *Kremeria* (Durieu) Heywood, Agron. Lusit. 20 (3): 212 (1958).

Ray florets oblong or oblong-linear; pappus auriculiform, as long as or shorter than the basal tube of the ray floret. Disc florets actinomorphic, hermaphrodite, 5 (—6) toothed; pappus auriculiform or coroniform.

Type: *C. myconis* (L.) Cassini

*Coleostephus myconis* (L.) Cassini, Dict. Sci. Nat. 41: 43 (1826); Willk. in Willk. & Lange, Prodr. Fl. Hisp. 2: 105 (1865); Tzvelev in Komarov, Fl. URSS. 26: 147 (1961).

Syn.:

*Chrysanthemum myconis* L., Sp. Pl. ed. 2, 2: 1254 (1763); All., Auct. Fl. Pedem. no. 693 (1789); Gren. & Godron, Fl. Fr. 2: 146 (1850); Boiss., Fl. Or. 3: 335 (1875); Coutinho, Fl. Port. 632 (1913); Fiori, Nuova Fl. Anal. Ital. 2: 622 (1927); Fourn. P., Quatre Fl. Fr. 973 (1946).

- Matricaria myconia* (L.) Desr. in Lam., *Encycl. Méth. Bot.* 3: 736 (1972).  
*Pyrethrum myconis* (L.) Moench, *Suppl. Méth.* 247 (1802); Hoffsgg. & Link, *Fl. Port.* 2: 342 (1825); DC., *Prodr.* 6: 61 (1838).  
*Myconia chrysanthemum* Sch. Bip. in Webb & Berth., *Phyt. Canar.* 2: 247 (1842).  
*Myconella myconis* (L.) Sprague, *Kew Bull.* 1928: 269 (1928); Giroux, *Bull. Soc. Hist. Nat. Afr. Nord.* 21: 172 (1930).  
*Kremeria myconis* (L.) Maire in Jahandiez & Maire, *Cat. Pl. Maroc.* 3: 777 (1934).  
*Leucanthemum myconis* (L.) P. Giraud, *Ann. Univ. Grenoble sect. Sc.-Med.* 11: 197 (1934); Heywood, *Agron. Lusit.* 20 (3): 212 (1958).

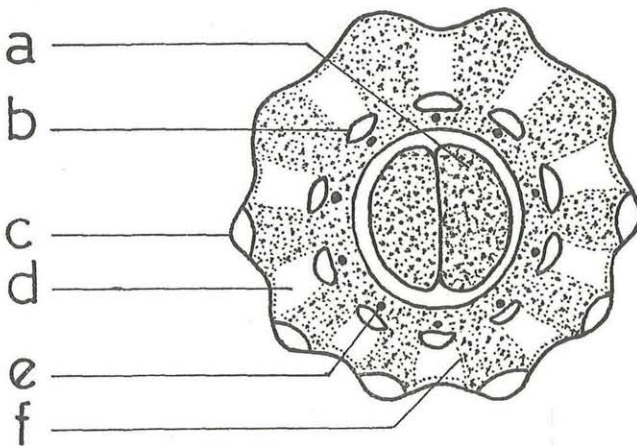


Fig. 1. *Coleostephus myconis*, T. S. of Cypselus (adopted from Giroux, 1930).  
 (a) Cotyledons, (b) Resiniferous canal, (c) Epicarpic mucilaginous glands,  
 (d) Lacuna (secretory), (e) Vascular bundle, (f) Stone cells

#### Citations of specimens:

Crete: Khania, La Canee, lieux incultis, 8. 6. 1883, REVERCHON: 75 (MANCH; K); Kissamos, lieux incultis, 22. 5. 1884, REVERCHON: 75 (K); Chikalara, 21. 3. 1915, GANDOGGER: 7540 (K).

Corsica: Serra di Scopamène, par Sartène, 20. 6. 1879, REVERCHON: 164 (MANCH; K; W-Halacsy); Bastia, on the edges of the meadow, 13. 6. 1849, KARLIK: 656 (MANCH) Bonifacio à la Pianturella, 1. 7. 1849, REVERCHON: 164 (MANCH; K; W-Halacsy); cultivated at Saint-Emiland, 25. 6. 1882, OZANON & GILLOT in MAGNIER Exs.: 576 (MANCH; W-Halacsy); Etang de Biguglia, in meadows, 11. 6. 1866, MABILLE: 147 (MANCH); Vico, 9. 8. 1879, F. GLASTIENGH: s. n. (W-Halacsy); Taermina, in cultivated fields, 27. 4. 1898, G. RIGO: 188 (W-Halacsy).

France: Var, near Toulon, 1848, BOURGEOU in H. C. WATSON Bot. Soc. London: 225 (MANCH); Luc, on cultivated, granite land, 5. 6. 1848, BILLOT: 1692 (MANCH); 20. 6. 1860, F. SCHULTZ: 506 (MANCH); Antibes, in meadows, 5. 6. 1861, BOURGEOU: 355 (MANCH).

Greece: Auf Wiesen an der Potamos (Corcyra, Cerigo), 19. 5. 1896, BRUCK in BAENITZ Herb.: s. n. (MANCH).

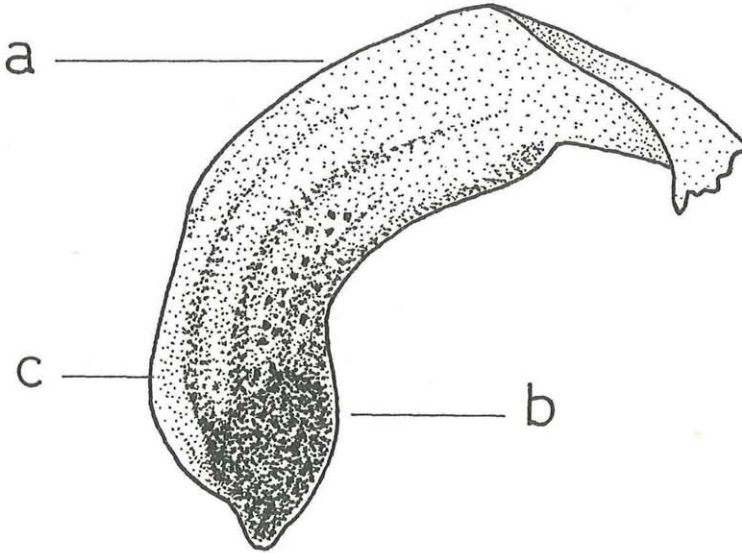


Fig. 2. *Coleostephus myconis*, Cypsel. (a) Pappus, (b) Basal callus, (c) Main body of the fruit

Italy: Pistoia, Monte Albano near Pistoia, 19. 6. 1885, COSTA-REGHINI in BAENITZ herb.: s. n. (MANCH; W-Halacsy). Pisa, 1868, Henri van HEURCK: s. n. (MANCH).

Portugal: Algarve, Cabo de S. Vicente, in meadows, 14. 5. 1853, BOURGEOU: 1922 (MANCH). DOURO LITORAL, Porto, 6. 1891, Buchtien: s. n. (MANCH). MINHO, Gerez, 6. 1888, Murray: s. n. (MANCH).

Sardinia: Tempio Pausania, lieux humides des moissons, 14. 6. 1882, REVERCHON: 49 (MANCH; W-Halacsy); Santa Teresa Galaura par Tempio, 24. 6. 1881, REVERCHON: 49 (K).

Sicily: Mont S. Angles supra Cefalu, 15. 4. 1874, STROBL: s. n. (MANCH; K); Palermo, in montis calcareis supra S. Maria de Gesu prope Panorum, 18. 4. 1874, STROBL; s. n. (MANCH; K); Mondello in meadows, 21. 5. 1855, E. & A. HUET DU PAVILLON: s. n. (MANCH); TODARO: 1371 (MANCH; K; W-Halacsy); 15. 4. 1830, LANZA: s. n. (W-Halacsy).

Spain: Almeria, Almeria in herbidis, ad rivulas, sol. schistoso, alt.



20—100 m, 4. 1890, PORTA & RIGO: 224 (MANCH; K). AVILA, nr. Naval-moral, 30. 5. 1863, BOURGEOU: s. n. (MANCH). Extremadura, 1848—50, WELWITSCH: 1107 (MANCH).

*Coleostephus paludosus* (DURIEU) ALAVI, comb. nova

Syn.:

*Kremeria paludosa* DURIEU in Duchartre, Rev. Bot. 1: 364 (1846).

*Coleostephus hybridus* LANGE, Kjoeb. Vidensk. Meddel. (Pugillus: 127): 77 (1861); WILLK. in WILLK. & LANGE, Prodr. Fl. Hisp. 2: 105 (1865) quoad desc. excl. basionym, non *Chrysanthemum hybridum* Guss.

*C. clausonis* POMEL, Nouv. Mat. Fl. Atl. 59 (1874).

*Chrysanthemum clausonis* (POMEL) BATT. in BATT. & TRABUT, Fl. Algér. (Dicot.) 463 (1889); COUTINHO, Fl. Port. 632 (1913).

*Myconia paludosa* BRIQ. & CAVILLIER in BURNAT, Fl. Alp. Marit. 6: 76 (1916).

*Myconella paludosa* MAIRE ex GIROUX, Bull. Soc. Nat. Afr. Nord. 21 (8): 177 (1930).

*Leucanthemum clausonis* (POMEL) GIRAUD, Ann. Univ. Grenoble sect. Sc.-Med. 11: 198 (1935); HEYWOOD, Agron. Lusit. 20 (3): 212 (1958).

Citations of specimens:

Spain: Almeria, in paludosis subsalsis ad Almeria, 28. 9. 1865, 28. 9. 1865, LANGE: s. n. (K).

Sect. *Glossopappus* (KUNZE) ALAVI, comb. nova.

Syn.:

*Glossopappus* KUNZE, Flora 47: 748 (1846); WILLK. in WILLK. & LANGE, Prodr. Fl. Hisp. 2: 106 (1865).

*Leucanthemum* subgen. *Glossopappus* (KUNZE) HEYWOOD, Agron. Lusit. 20 (3): 213 (1958).

Ray florets ovate-elliptical; pappus auriculiform, twice as long as the basal tube of the ray floret. Disc florets zygomorphic,  $\frac{2}{3}$ -toothed; pappus auriculiform, as long as the corolla tube.

Type: *C. macrotus* DURIEU.

*Coleostephus macrotus* DURIEU in DUCHARTRE, Rev. Bot. 1: 363 (1846); BOISS. & REUTER, Pugillus 58 (1852).

Syn.:

*Glossopappus chrysanthemoides* KUNZE, Flora 47: 748 (1846); WILLK. in WILLK. & LANGE, Prodr. Fl. Hisp. 2: 106 (1865).

*Pyrethrum myconis* var. *pullatum* COSSON, Not. Pl. Crit. 38 (1849)

*Chrysanthemum macrotum* (DURIEU) BALL, Jour. Linn. Soc. London (Bot.) 16: 509 (1878).

*Glossopappus macrotus* (Durieu) BRIQ. & CAVILLIER in BURNAT, Fl. Alp. Marit. 77 (1916).

*Leucanthemum macrotum* ssp. *chrysanthemoides* (KUNZE) HEYWOOD, Agron. Lusit. 20 (3): 213—14 (1958).

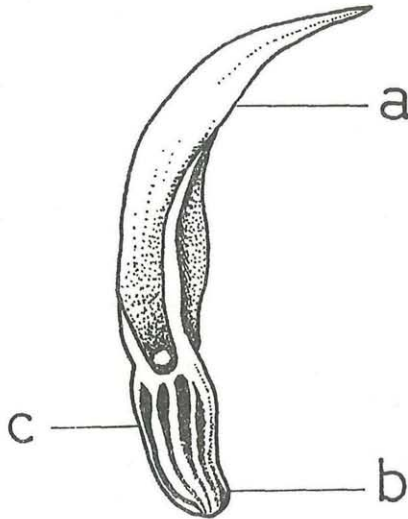


Fig. 3. *Coleostephus macrotus*, Cypsela. (a) Pappus, (b) Basal callus, (c) Main body of the fruit

Citations of specimens:

Spain: Cadiz, dans les champs a Medina Sidonia, 21. 3. 1849, BOURGEOU: 284 (K). — Jaén, between the Olive yards and foot of Sierra, above road to Los Banos de Jabalcuz, 21. 5. 1926, ELLEMAN & SANDWITH: 758 (K); Blanco, 7. 1850, GAY: 521 (K). — Malaga, loc. lapidos ad Chario et pr. Yunquera, 5—30th May, 1879, HUTER, PORTA & RIGO: 558 (MANCH; E; K); loc. cultis ad Nacimiento del Rio Granda pr. Yunquera sol. schist. calc. alt. 3—400 m, 14. 6. 1895, PORTA & RIGO: 241 (MANCH; K; W-Halacsy); above Velez Málaga road, grassy slopes, in large masses also seen in Morocco, 8. 4. 1963, STOCKEN: 181.63 (E); Velez Málaga, 8. 6. 1845, WILLKOMM: 744 (K).

References

ALAVI, SIFAT A. 1970. A revision of the European *Chrysanthemum*-*Leucanthemum* & *Tanacetum* complex ... unpublished Doctoral thesis submitted in the University of Liverpool, Liverpool, U. K.



- BATTANDIER J. A. & TRABUT L. 1889. Flore de l'Algerie contenant la Description de toutes les Plantes signalees jusqu'a ce Jour comme spontanees in Algerie et Catalogue des Plantes du Maroc, (Dicotyledons), Alger & Paris, 463.
- BENTHAM G. 1875. In BENTHAM & HOOKER, 1875.
- BENTHAM G. & HOOKER J. D. 1875. Genera Plantarum ad Exemplaria imprimis in herbariis Kewensibus servata Definita, Londini, 2: 425.
- BOHLMANN F. et al. 1964. Neue Acetylenverbindungen aus Chrysanthemum-Arten, Chem. Ber. 97: 1179—1192.
- BOISSIER P. E. 1875 Flora Orientalis, Basileae, Genevae & Lugduni, 3: 335 (1875).
- BOISSIER, P. E. & REUTER G. F. 1842. Diagnoses Plantarum novarum Africae borealis Hispaniaeque australis, Genevae, 58.
- BRIQUET J. I. & CAVILLIER F. 1916. In BURNAT, E. 1916.
- BURNAT E. 1916. Flore des Alpes Maritimes ou Catalogue raisonnee des Plantes qui croissent spontanement dans la Chaine des Alpes Maritimes y compris le Department francais de ce Nom et une Partie de la Ligurie occidentale, Geneve, Bale & Lyon, 6: 71—181.
- CASSINI M. H. 1826. Dictionnaire des Sciences Naturelles, Paris, 26: 38—46.
- COSSON E. S. C. 1849. Notes sur quelques Plantes critiques, rares et nouvelles et Additions a la Flore des Environs de Paris, Paris, 38.
- COUTINHO A. X. P. 1913. Flora de Portugal (Plantas Vasculares) disposta em Chaves dichotomicas, Paris, 632.
- DE CANDOLLE A. P. 1838. Prodromus Systematis naturalis Regni Vegetabilis, sive Enumeratio contracta Ordinum, Generum, Specier-Plantarum hucusque congitarum juxta Methodi naturalis Normas digesta, Parisiis, 6:61.
- DUCHARTRE P. E. S. 1846. Revue botanique. Recueil mensuel renferment l'analyse des Travaux publies en France et l'Etranger sur la Botanique sur ses Applications a l'Horticulture, l'Agriculture, la Medicine etc., Paris, 1: 363—365.
- DURIEU de Maisonneuve M. 1848. In DUCHARTRE, P. E. S. 1848.
- FOURNIER P. 1946. Les quatre Flore de la France, Corse comprise, Paris, 973.
- FIORI A. 1927. Nuova Flora analitica d'Italia contenente la Descrizione della Piante vascolari indigene inselvatichite a largamente coltivate in Italia, Firenze, 2: 622.
- GIRAUD P. 1934. Recherches sur quelques composees Chrysanthemees mediterraneennes, Ann. Univ. Grenoble sect. Sc.-Med. 11: 195—201.
- GIROUX M. 1930. Sur la carpologie de quelques Composees nord Africaines, Bull. Soc. Hist. Nat. Afr. Nord 21 (8): 161—189.
- GRENIER J. C. M. & GODRON D. A. 1850. Flore de France, ou Description des Plantes qui croissent naturellement en France et en Corse, Paris, 2: 146.
- HARLING, G. 1951. Embryological studies in Compositae II, Anthemideae ... Chrysantheminae Acta Horti Berg. 16 (1): 1—56.
- HEYWOOD V. H. 1958. A check list of the Portuguese Compositae ... Chrysanthemineae Agron. Lusit. 20 (3): 205—216.

- HOFFMANNSEGG J. C. Graf von & LINK H. F. 1825. Flore Portugaise, ou description de toutes les plantes qui croissent naturellement en Portugal, Berlin, 2: 342.
- JAHANDIEZ E. & MAIRE R. C. J. E. 1934. Catalogue des Plantes du Maroc Alger, 3: 777.
- KUNZE G. G. 1846. Flora 47: 748—749.
- LAMARCK J. B. A. P. de 1792. Encyclopedie methodique Botanique, Paris, 3: 736.
- LINNAEUS C. von 1763. Species Plantarum, exhibentes Plantas rite cognitatas, ad Genera relatas, cum Differentiis specificis, Nominibus trivialibus, Synonymis selectis, Locis natalibus secundum Systema sexuale digestas, Holmiae, ed. 2, 2: 1254.
- MOENCH C. 1802. Methodus Plantas Horti botanici et Agri Marburgensis a Staminum Situ describendi (Supplementum), Marburgi Cattorum, 247.
- POMEL A. 1874. Nouveaux Materiaux pour la Flore Atlantique, Oran, 59.
- SCHULTZ-BIPONTINUS C. H. 1842. In WEBB & BERTHELOT (1842).
- SPRAGUE T. A. 1928. The generic names Miconia and Myconia, Kew Bull. 1928: 268—269.
- WEBB P. B. & BERTHELOT S. 1842. Phytographia canariensis, Paris 2: 247.
- WILLKOMM H. M. 1865. In WILLKOMM & LANGE (1865).
- & LANGE J. 1865. Prodrömus Florae Hispanicae sive Synopsis methodica omnium Plantarum in Hispania sponte nascentium vel frequentius culturum quae innotuerunt Auctoribus, Stuttgart, 2: 105—106.

# ZOBODAT - [www.zobodat.at](http://www.zobodat.at)

Zoologisch-Botanische Datenbank/Zoological-Botanical Database

Digitale Literatur/Digital Literature

Zeitschrift/Journal: [Phyton, Annales Rei Botanicae, Horn](#)

Jahr/Year: 1976

Band/Volume: [17\\_3\\_4](#)

Autor(en)/Author(s): Alavi Sifat A.

Artikel/Article: ["Genus Coleostephus Cassini in Europe" \(Asteraceae\). 319-328](#)