

***Ogoas* DRUCE, 1890 and *Rowdenia* NYE, 1975  
(=*Tomyris* DRUCE, 1890), two new junior,  
subjective synonyms of the genus *Hypena*  
SCHRANK, 1802 (Lepidoptera: Noctuidae:  
Hypeninae)**

**M. Lödl**

---

**Abstract**

*Ogoas* DRUCE, 1890 **syn.n.** and *Rowdenia* NYE, 1975 (= *Tomyris* DRUCE, 1890) **syn.n.** are two new junior, subjective synonyms of the genus *Hypena* SCHRANK, 1802. *Tomyris* DRUCE, 1890 was preoccupied and therefore replaced by *Rowdenia* NYE, 1975. The type species of both genera, *Ogoas albipuncta* DRUCE, 1890 and *Tomyris nigropuncta* DRUCE, 1890, are briefly redescribed. The adults and the male genitalia are illustrated, the lectotypes of both taxa are designated.

**Zusammenfassung**

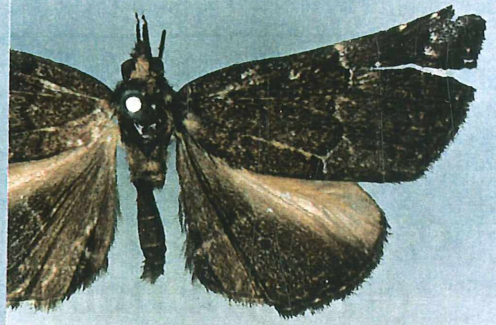
*Ogoas* DRUCE, 1890 **syn.n.** und *Rowdenia* NYE, 1975 (= *Tomyris* DRUCE, 1890) **syn.n.** werden als neue, jüngere, subjektive Synonyme der Gattung *Hypena* SCHRANK, 1802 erkannt. *Tomyris* DRUCE, 1890 war praeokkuptiert und wurde durch *Rowdenia* NYE, 1975 ersetzt. Die Typusarten beider Arten, *Ogoas albipuncta* DRUCE, 1890 und *Tomyris nigropuncta* DRUCE, 1890, werden kurz wiederbeschrieben. Die Imagines sowie die männlichen Genitalarmaturen werden abgebildet, die Lectotypen beider Taxa werden designiert.

**Key words:** *Hypena*, Hypeninae, Neotropical Region, new synonyms, *Ogoas*, *Rowdenia*, *Tomyris*.

---

**Introduction**

*Ogoas* DRUCE, 1890 **syn.n.** and *Rowdenia* NYE, 1975: 435 (= *Tomyris* DRUCE, 1890) **syn.n.** are two new junior, subjective synonyms of the genus *Hypena* SCHRANK, 1802. *Tomyris* DRUCE, 1890 was preoccupied by *Tomyris* CHAPUIS, 1874: 265 (Insecta: Coleoptera: Chrysomelidae) and therefore replaced by *Rowdenia* NYE, 1975. The type species of both genera, *Ogoas albipuncta* DRUCE, 1890 and *Tomyris nigropuncta* DRUCE, 1890, are briefly redescribed. The adults and the male genitalia are illustrated, the lectotypes of both taxa are designated.



1

2

Godman-Salvin  
Coll. 1901.—99.  
B.C.A. Lep. Het.  
*Ogoas  
albipuncta*,  
Druce.

Sabo,  
Verp Paz.  
Champion.

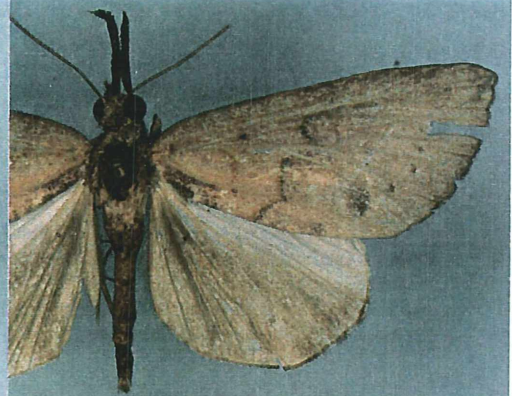
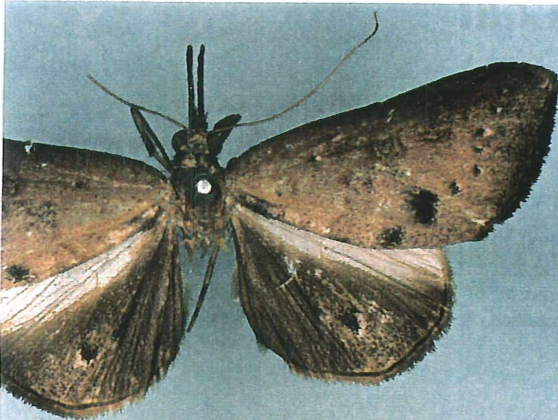
Noctuidae  
Brit. Mus. slide  
No. 16500 ♂

Godman-Salvin  
Coll. 1901.—99.  
B.C.A. Lep. Het.  
*Ogoas  
albipuncta*,  
Druce.

Sabo,  
Verp Paz.  
Champion.

Type

*Ogoas Druce  
albipuncta  
type.*



3

4

Godman-Salvin  
Coll. 1901.—99.  
B.C.A. Lep. Het.  
*Tomyris  
nigropuncta*,  
Druce.

V. de Atitlan.  
25-3500 ft.  
Champion.

Noctuidae  
Brit. Mus. slide  
No. 16501 ♂

*Tomyris n.p.  
Druce  
nigropuncta  
Druce  
type.*

Godman-Salvin  
Coll. 1901.—99.  
B.C.A. Lep. Het.  
*Tomyris  
nigropuncta*,  
Druce.

Caldera,  
1800 ft.  
Champion.

LECTU-  
TYPE

**Figs. 1-4:**

**Fig. 1:** *Ogoas albipuncta* DRUCE, 1890, Lectotype ♂.- **Fig. 2:** dto.- Paralectotype ♂.- **Fig. 3:** *Rowdenia nigropuncta* (DRUCE, 1890) [*Tomyris*], Lectotype ♂.- **Fig. 4:** dto.- Paralectotype ♂.

(Figs. 1-2, 5-10)

*Ogoas albipuncta* DRUCE, 1890: 439, pl. 35, fig. 24.

**Type material:**

**Lectotype** (by present designation): ♂, [Guatemala] „Godman-Salvin Coll. 1901.-99. \_\_ B.C.A. Lep. Het. *Ogoas albipuncta* Druce. \ Sabo, Vera Paz. Champion. \ Noctuidae Brit. Mus. slide No. 16500 ♂“ (BMNH) (Fig. 1).

**Paralectotype:** 1 ♂, „Godman-Salvin Coll. 1901.-99. \_\_ B.C.A. Lep. Het. *Ogoas albipuncta* Druce. \ Sabo, Vera Paz. Champion. \ Type \ *Ogoas albipuncta* Druce Type.“ (BMNH) [abdomen of this specimen is glued, therefore the other specimen was designated as lectotype] (Fig. 2).

**Description:**

**Head:** Dark brown with short, porrect labial palps.

**Thorax and abdomen:** Dark brown to blackish brown.

**Wings:** Dark brown forewings with fine pointed apex and grooved costa. Costa near the apex with whitish or yellowish, distinct dots. A dark reddish brown, waved antemedial band and postmedial band are present. The outer margin of the postmedial band is whitish. The postmedial band stands far in the middle. Reniform and orbicular spots are not present. The subterminal line is marked with tiny, pale spots. The hindwings bear a broad pale scent area at the costal margin and long, hairy scales of reddish brown colour. The hindwings are dark brown, the margin is marked with a black line.

**♂-genitalia** (Figs. 5-10): Typical *Hypena*-genitalia, very small and flabby with an expanse of the clasping organ of only 1.5 mm. Tegumen and scaphium bulky. Valves enlarged and rounded caudally, covered with hair-like scales in the outer half (Fig. 9). Base of the valves with a big, round swelling (Fig. 10). Juxta formed like a deltoid (Fig. 10). Uncus strongly hook-shaped with a strong and heavily sclerotized tip. Dorsal margin of the uncus covered with knobs (Fig. 8). The aedeagus is kneed with an opening angle of 110°. Shark-teeth well developed (Fig. 6) and the vesica with a distinct area of small spines (Fig. 7).

The female is unknown.

***Rowdenia nigropuncta* (DRUCE, 1890)**

(Figs. 3-4, 11-16)

*Tomyris nigropuncta* DRUCE, 1890: 440, pl. 35, fig. 25.

**Type material:**

**Lectotype** (by present designation): ♂, [Guatemala] „Godman-Salvin Coll. 1901.-99. \_\_ B.C.A. Lep. Het. *Tomyris nigropuncta* Druce. \ V. de Atitlan, 25-3500 ft. Champion. \ Noctuidae Brit. Mus. slide No. 16501 ♂ \ *Tomyris* N.G. Druce *nigropuncta* Druce Type. (BMNH) (Fig. 3).

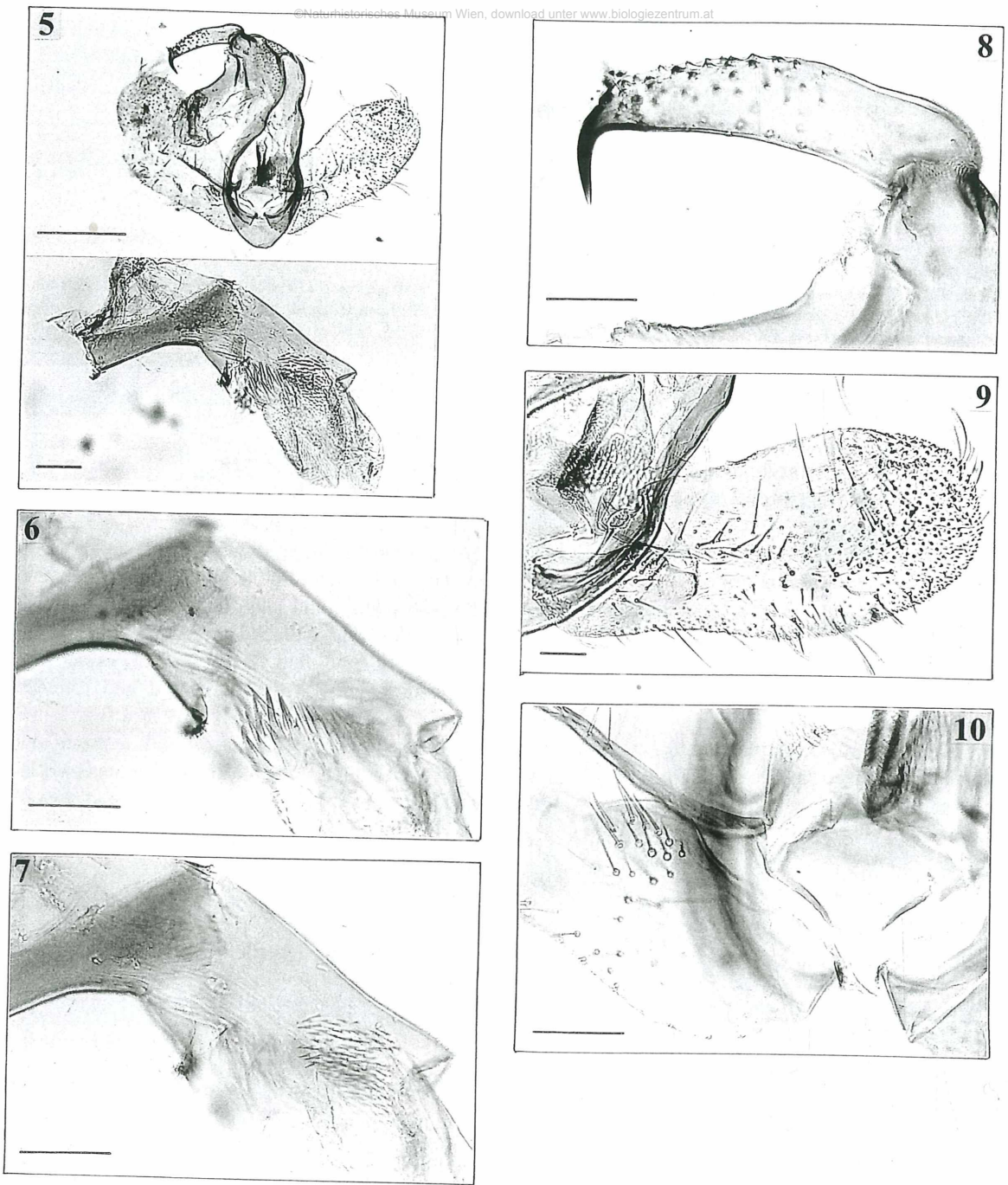
**Paralectotype:** 1 ♂, [Panama] „Godman-Salvin Coll. 1901.-99. \_\_ B.C.A. Lep. Het. *Tomyris nigropuncta* Druce. \ Caldera, 1200 ft. Champion. \ PARALECTOTYPE“ (BMNH) (Fig. 4).

**Description:**

**Head:** Pale brown with big, prominent eyes. Labial palps very long, porrect and blackish brown.

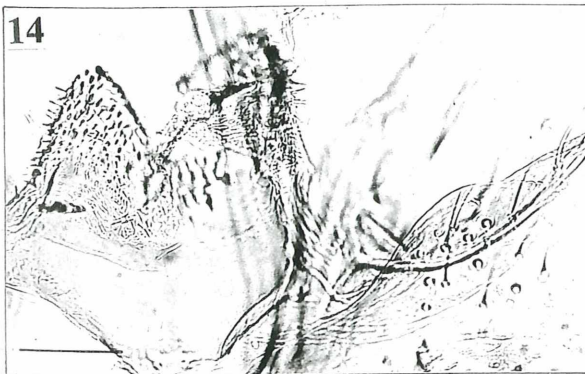
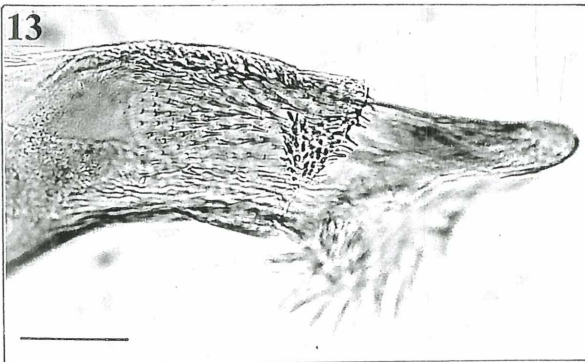
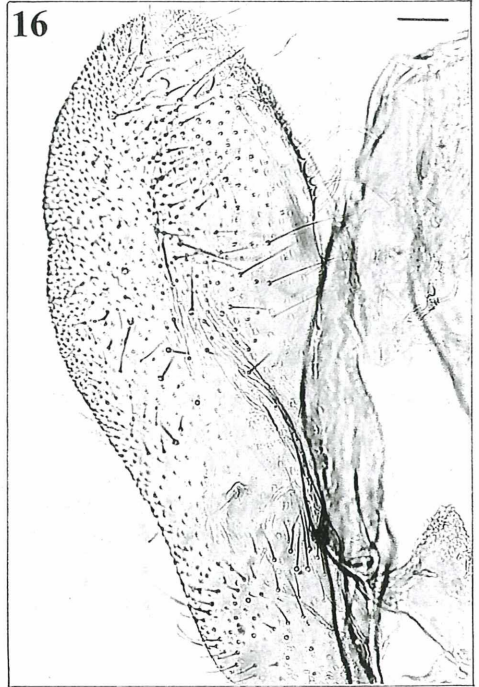
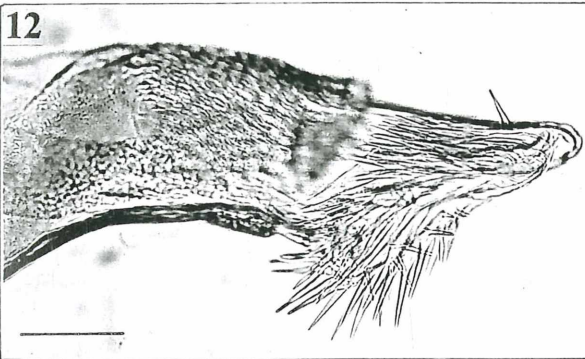
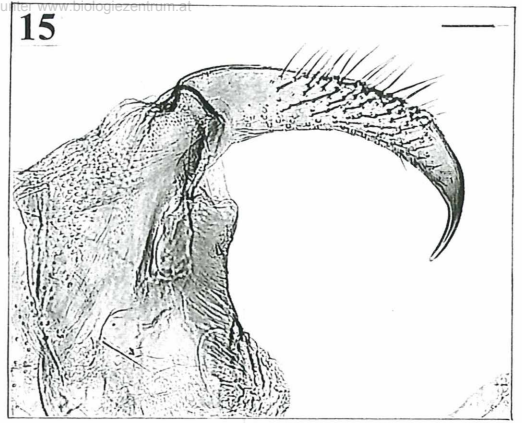
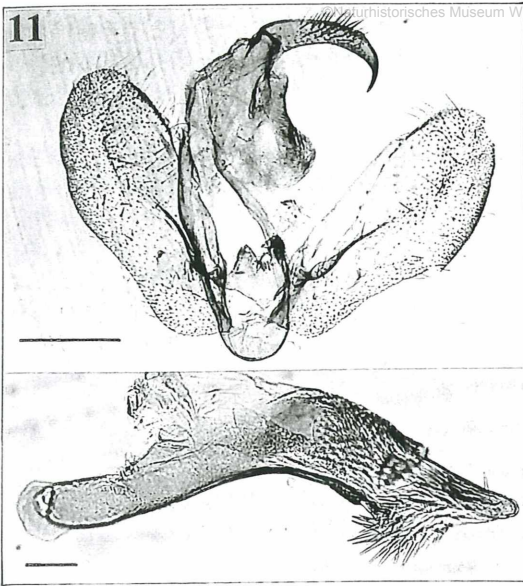
**Thorax and abdomen:** Dark brown with reddish touch, legs pale brown.

**Wings:** Slender with fine pointed apex and smoothly rounded outer margin. Tornus receding and inner margin rounded. Costa with groove. Forewings pale brown with yellowish or pinkish touch, darkened along the costa and the outer margin. Black patches along the base of the inner margin and as subterminal line present. Two big, black patches at the beginning of the postmedial band.



**Figs. 5-10** *Ogoas albipuncta* DRUCE, 1890, Lectotype ♂, Noctuidae Brit. Mus. slide No. 16500:

**Fig. 5:** Genitalia, corpus and aedeagus. Scale of corpus = 0.5 mm, scale of aedeagus = 0.1 mm.-  
**Fig. 6:** Aedeagus: shark-teeth. Scale = 0.1 mm.- **Fig. 7:** dto.- Cornutus spines on vesica. Scale = 0.1 mm.-  
**Fig. 8:** Uncus. Scale = 0.1 mm.- **Fig. 9:** Right valve. Scale = 0.1 mm.- **Fig. 10:** Base of left valve and juxta. Scale = 0.1 mm.



**Figs. 11-16** *Rowdenia nigropuncta* (DRUCE, 1890) [*Tomyris*], Lectotype ♂, Noctuidae Brit. Mus. slide No. 16501:

**Fig. 11:** Genitalia, corpus and aedeagus. Scale of corpus = 0.5 mm, scale of aedeagus = 0.1 mm.- **Fig. 12:** Aedeagus: shark-teeth. Scale = 0.1 mm.- **Fig. 13:** Aedeagus-cuff. Scale = 0.1 mm.- **Fig. 14:** Anellus and juxta. Scale = 0.1 mm.- **Fig. 15:** Uncus. Scale = 0.1 mm.- **Fig. 16:** Left valve. Scale = 0.1 mm.

The reniform spot is marked with a tiny reddish brown line. The antemedial band is missing and the median line is marked with reddish brown stripes. Hindwings dark blackish brown with black margin. A broad, pale scent area in the costal area of the hindwing is present. A black patch is standing in the middle of the hindwing.

♂-genitalia (Figs. 11-16): Typical *Hypena*-genitalia. Valves not so rounded as in the previous species, the ventral margin slightly grooved. The costal margin of the valves exhibits near the distal end a row of small knobs with bristles (Fig. 16). Scaphium rough and bulky (Fig. 15). Tegumen slender. Anellus covered with tiny spines, juxta deltoid shaped with grooved margins. Uncus long, hook-shaped, hook rounded (Fig. 15). The aedeagus is relatively flat with an opening angle (LÖDL 1994) of 135°. Distal end of the aedeagus with a slightly upcurved nose and strong shark-teeth (LÖDL 1994) (Figs. 12-13).

The female is unknown.

The species *Hypena syllicifalis* SCHAUS, 1904 from Venezuela was combined with the genus *Rowdenia* by POOLE (1989: 885). The type(s) are supposed to be in the National Museum of Natural History in Washington (USNM) and could not be examined for the present paper.

### Literature

- CHAPUIS, F. in LACORDAIRE, T. & CHAPUIS, F. 1874: Histoire naturelle des Insectes - Coléoptères X: Famille des Phytophages, iv + 455 pp.
- DRUCE, H. in GODMAN, F.D. & SALVIN, O. [1890] 1881-1891: Zoology. Lepidoptera. Heterocera. In: Biologia Centrali Americana; or Contributions to the Knowledge of the Fauna of Mexico and Central America, volume 1. - Taylor & Francis, London, 490 pp., pl. 1-64.
- LÖDL, M. 1994: Revision der Gattung *Hypena* SCHRANK, 1802 s.l. der äthiopischen und madagassischen Region, Teil 1 (Lepidoptera: Noctuidae: Hypeninae). - Annalen des Naturhistorischen Museums in Wien 96 B: 373-590.
- NYE, I.W.B., 1975: The Generic Names of Moths of the World. Volume I Noctuoidea (part): Noctuidae, Agaristidae, and Nolidae. - Trustees of the British Museum (Natural History), London, 568 pp.
- POOLE, R.W. 1989: Lepidopterorum Catalogus (new series). Fasc. 118, Noctuidae Pt.1-3. - E.J. Brill, Fauna & Flora Publ., Leiden, New York, 1314 pp.

**Author's address:** Mag.Dr. Martin Lödl, Naturhistorisches Museum Wien, Burgring 7, A-1014 Wien, Österreich. e-mail martin.loedl @ nhm-wien.ac.at

---

# ZOBODAT - [www.zobodat.at](http://www.zobodat.at)

Zoologisch-Botanische Datenbank/Zoological-Botanical Database

Digitale Literatur/Digital Literature

Zeitschrift/Journal: [Quadrifina](#)

Jahr/Year: 2000

Band/Volume: [3](#)

Autor(en)/Author(s): Lödl Martin

Artikel/Article: [Ogoas DRUCE, 1890 and Rowdenia NYE, 1975 Tomyris DRUCE, 1890\), two new junior, subjective Synonyms of the genus Hypena SCHRANK, 1802 \(Lepidoptera: Noctuidae: Hypeninae\). 17-22](#)