







9.02  
542  
S4  
Ed. 2  
Tafeln  
ENT

# Die Gross-Schmetterlinge der Erde

— Eine systematische Bearbeitung —  
der bis jetzt bekannten Gross-Schmetterlinge

In Verbindung mit namhaftesten Fachmännern herausgegeben

von

Prof. Dr. Adalbert Seitz.

I. Abt. II. Band: Die Palaearktischen Spinner & Schwärmer

**Tafeln**



STUTTGART

Verlag des Seitz'schen Werkes (Alfred Kern)

1912.

Alle Rechte vorbehalten.



CAUTION

CAUTION

## II. Band

# Inhalts-Verzeichnis der Tafeln.

Die beige-setzten Ziffern bezeichnen die Tafeln.

- Pryeria 1  
Phaуда 1  
Pseudopsyrche 1  
Aglaope 1  
Procris 1  
Trypanophora 2  
Eterusia 2, 56  
Rhodopsona 2  
Psaphis 56  
Pidorus 2  
Herpa 2  
Corma 2  
Chalcosia 2  
Erasmia 2  
Campylotes 2  
Histia 3  
Agalope 3  
Eleycma 3  
Artona 3  
Illiberis 3  
Phacusa 3  
Inope 3  
Clelea 3  
Piarosoma 3  
Zygaena 4—8, 56  
Epicopeia 10  
Sytomidae 9  
Nolinae 9  
Stigmatophora 11  
Engoa 11  
Psilopepla 11  
Nudaria 11  
Comacla 11  
Siccia 11  
Hyposiccia 11  
Parasiccia 11  
Melanaema 11  
Asuridia 11  
Mithochrista 11, 12  
Artaxidia 11  
Apaidia 11  
Nudaridia 11  
Paidia 11  
Lycleme 11  
Asura 11  
Philea 11  
Cyblosia 11  
Endrosa 11  
Chionaema 12  
Agrisius 12  
Paraona 12  
Oeonistis 12  
Apistostia 12  
Argylla 12  
Chrysonabdia 12  
Lithosia 12, 13  
Pelosia 13  
Gnophria 13  
Eligma 13  
Coscinia 13  
Utetheisa 13  
Argia 13  
Epimydia 13  
Pseudosterrha 13  
Kerala 13  
Camptoloma 13  
Tancrea 14, 16  
Oenogyna 14, 16  
Cletis 14, 16, 56  
Trichosoma 16, 56  
Phragmatobia 16  
Eucharia 16  
Euprepia 16  
Parasemia 16  
Orodemias 16  
Oronus 16  
Micrartia 16  
Spilartia 15, 56  
Spilosoma 15, 17  
Alphaea 15  
Lacydes 15  
Aloa 15, 17  
Phissama 17  
Creatonotus 17  
Areas 17  
Arctina 17  
Diaphora 17  
Rhyparia 14  
Rhyparioides 14  
Diaceria 14  
Hyphoraia 17, 56  
Pericalia 17  
Axiopoena 17  
Carcinopyga 17  
Gonerda 17  
Preparctia 17  
Arctia 17, 18  
Nicaea 18  
Callimorpha 18  
Hypoerita 18  
Hyalocoa 18  
Hyperborea 18  
Nyctemera 18  
Lachana 19  
Varmina 22  
Dasychira 19, 22  
Hypogynna 19  
Orgyia 19, 22  
Dasorgyia 22  
Aroa 19, 22  
Cifuna 19  
Laelia 19, 20, 22  
Arctornis 20, 22  
Stilpnotia 20, 22  
Ivela 20  
Pantana 20  
Pala 22  
Numenes 20, 22  
Himala 21  
Lymantria 20, 21, 22, 23  
Oeneria 21, 22  
Albarracina 21, 22  
Topomesoides 19  
Perina 21  
Porthesia 21, 22, 23  
Euproctis 21, 22, 23, 56  
Thaumatopoea 21, 23  
Chondrostega 24  
Malacosoma 23, 24  
Trichiura 24  
Poecilocampa 24  
Eriogaster 21  
Lasiocampa 25, 26  
Metanastria 26  
Dipterella (Diplura) 26  
Nadasia 26  
Chilena 26  
Cosmotriche 26  
Selenophora 27  
Trabala 27  
Epienaptera 27, 49  
Gastropacha 27  
Estigena 27  
Odonestis 27  
Dendrolimus 28  
Pachypasa 28  
Lebeda 30  
Paralebeda 30  
Taragama 29, 30  
Bhitna 29  
Suana 29  
Aeguda 29  
Lemonia 29, 30  
Ganisa 29  
Apha 29, 30  
Apona 29  
Eupterote 29, 30  
Brachytera 30  
Sangatissa 29  
Bombycidae 29, 30, 35  
Endromidae 35  
Euchera 23, 48  
Mimozethes 48  
Macrocilix 23  
Macrauzata 23  
Auzata 23, 18  
Callicilix 23  
Teldenia 48  
Leucodrepana 48  
Drepana 23, 30, 48  
Spica 48  
Doroca 48  
Phalacra 30  
Cilix 48  
Oreta 22, 30, 48  
Hypsomadius 22  
Pterodecta 22  
Schistomitra 48  
Graellsia 33  
Samia 33  
Rhodinia 34  
Loepa 32  
Salassa 34  
Antheraea 34  
Caligula 31, 32, 34  
Dictyoploca 32  
Neoris 31, 32  
Perisomena 32  
Saturnia 31  
Eriogyna 31  
Eudlia 31  
Aglia 35  
Brahmaea 35  
Sphingidae 36—43  
Acropteris 22, 48  
Miconia 48  
Pseudomiconia 48  
Nossa 48  
Methystria (Oberthürria) 48  
Psychostrophia 48  
Epiplena 48  
Notodontidae 44—49, 56  
Lithocharis 49  
Saronaga 49, 55  
Habrosyne 49, 55  
Thyatira 49, 55, 56  
Gauerna 49, 55, 56  
Palimpsestis 49, 56  
Paragnorima 56  
Parapsestis 49  
Polyploca 49, 56  
Axia 56  
Epicimelia 56  
Diloba 49  
Somabrachys 50  
Linaeodidae 30, 49, 50  
Heterogynis 50  
Psychidae 55, 56  
Thyrididae 50  
Aegeriidae (Sesiidae) 50, 51,  
52  
Cossidae 52, 53, 54, 55  
Hepialidae 54, 55

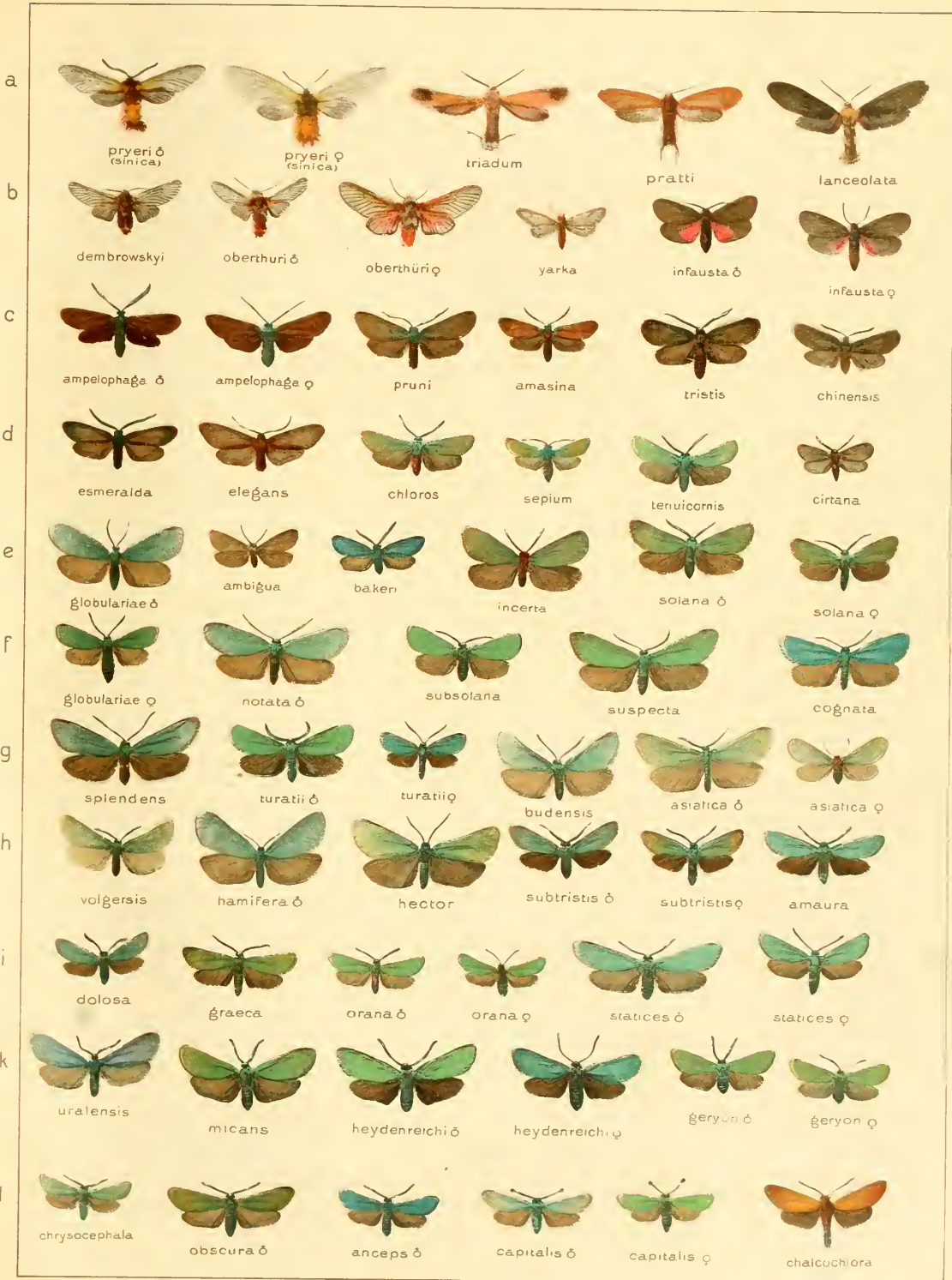




# PHAUDINAE - PROCRIS.

II.

1.

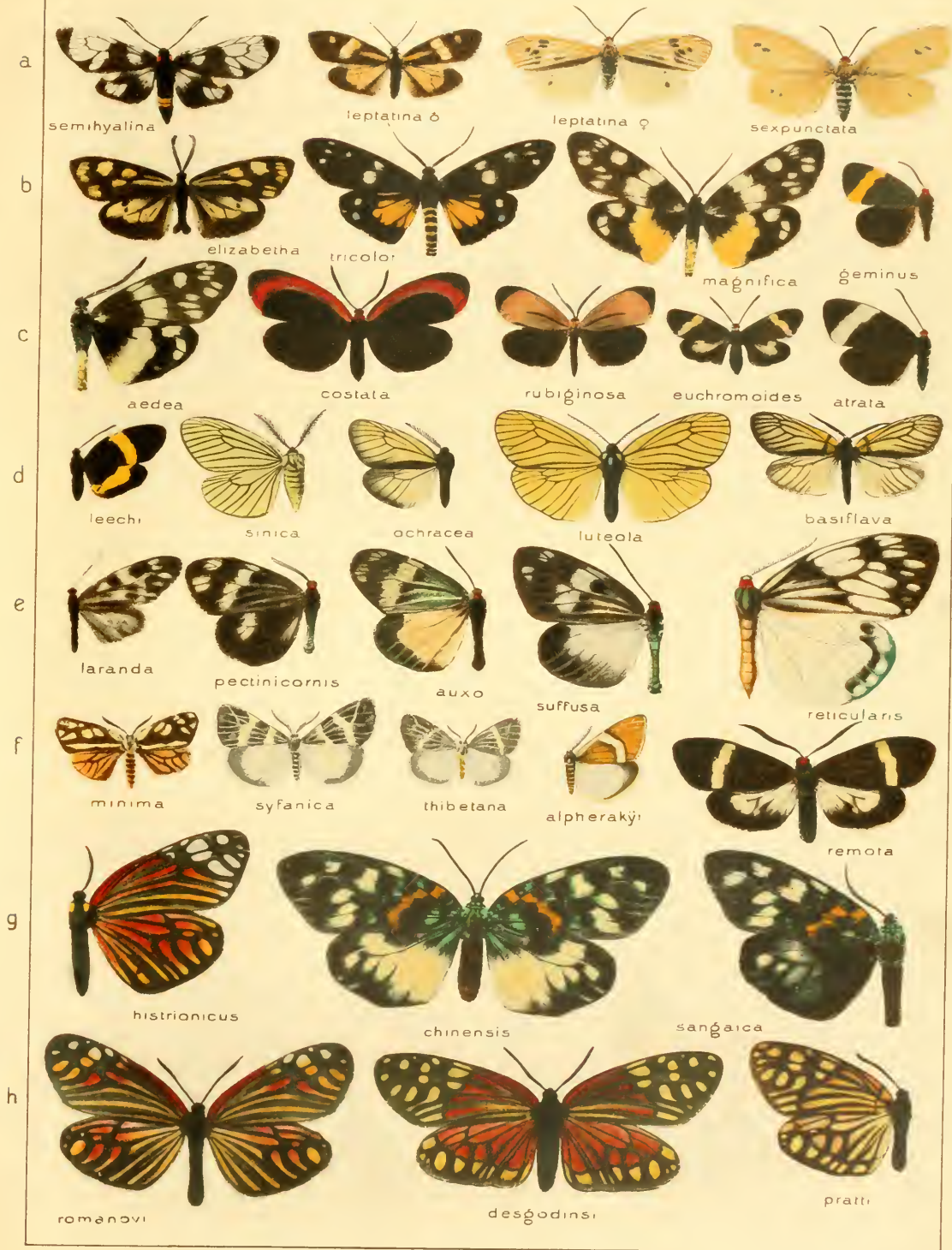




# CHALCOSIINAE

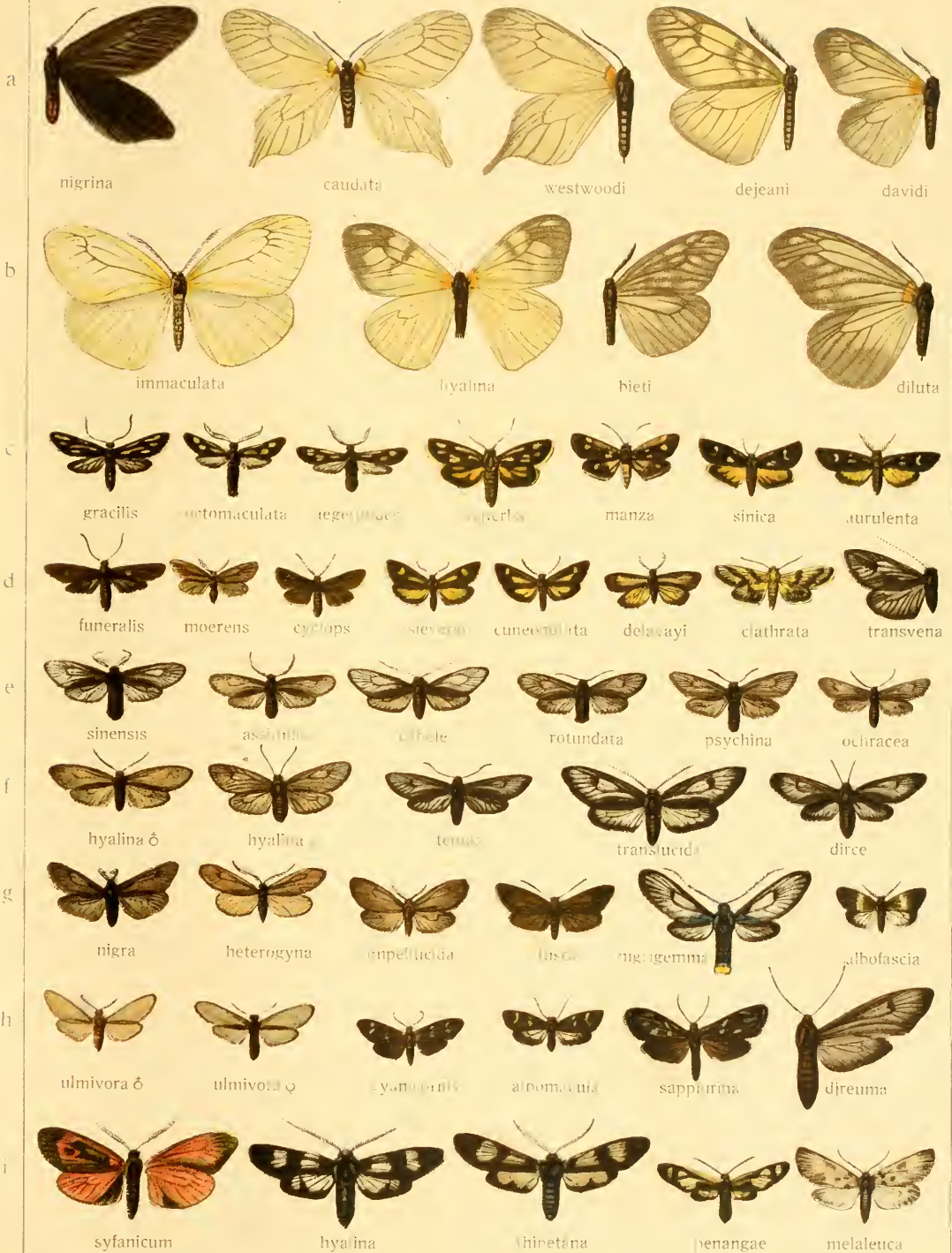
II

2





# CHALCOSIINAE





# ZYGAENA



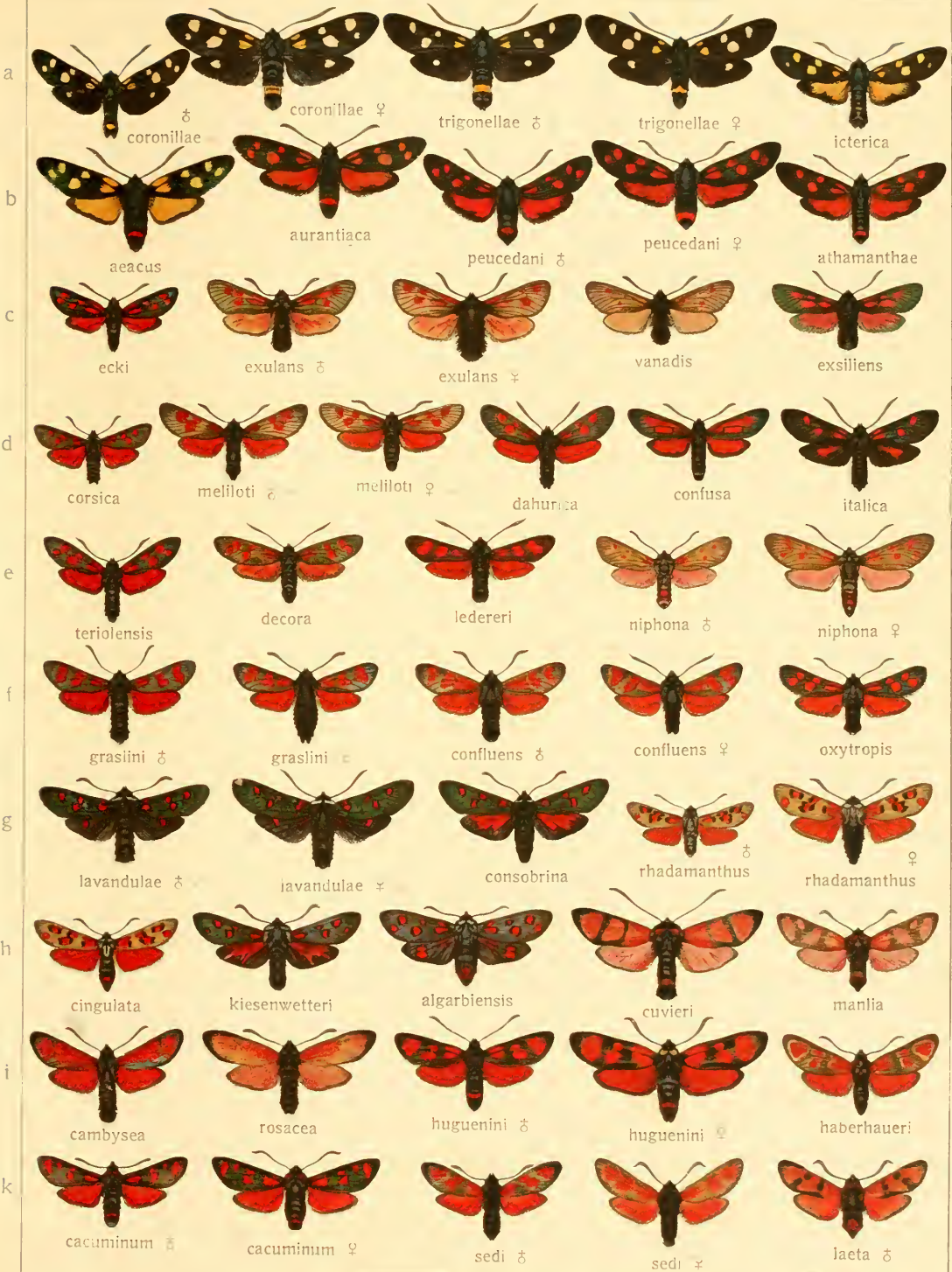




# Zygaena.







Pars I. Fauna palaeartica 2.



# ZYGAENA.

II.

7.





# ZYGAENA.

II.



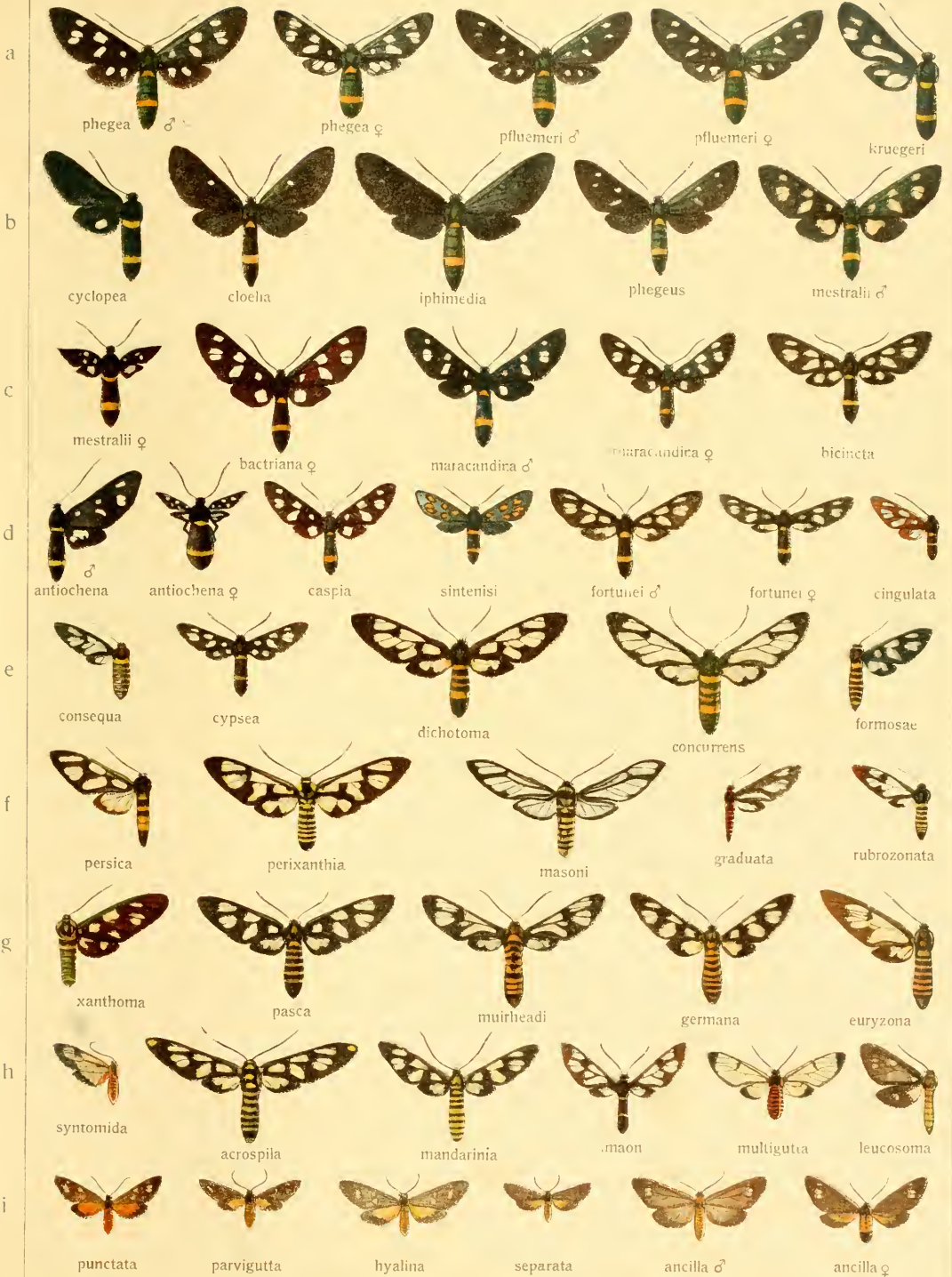




# SYNTOMIDAE

II

9



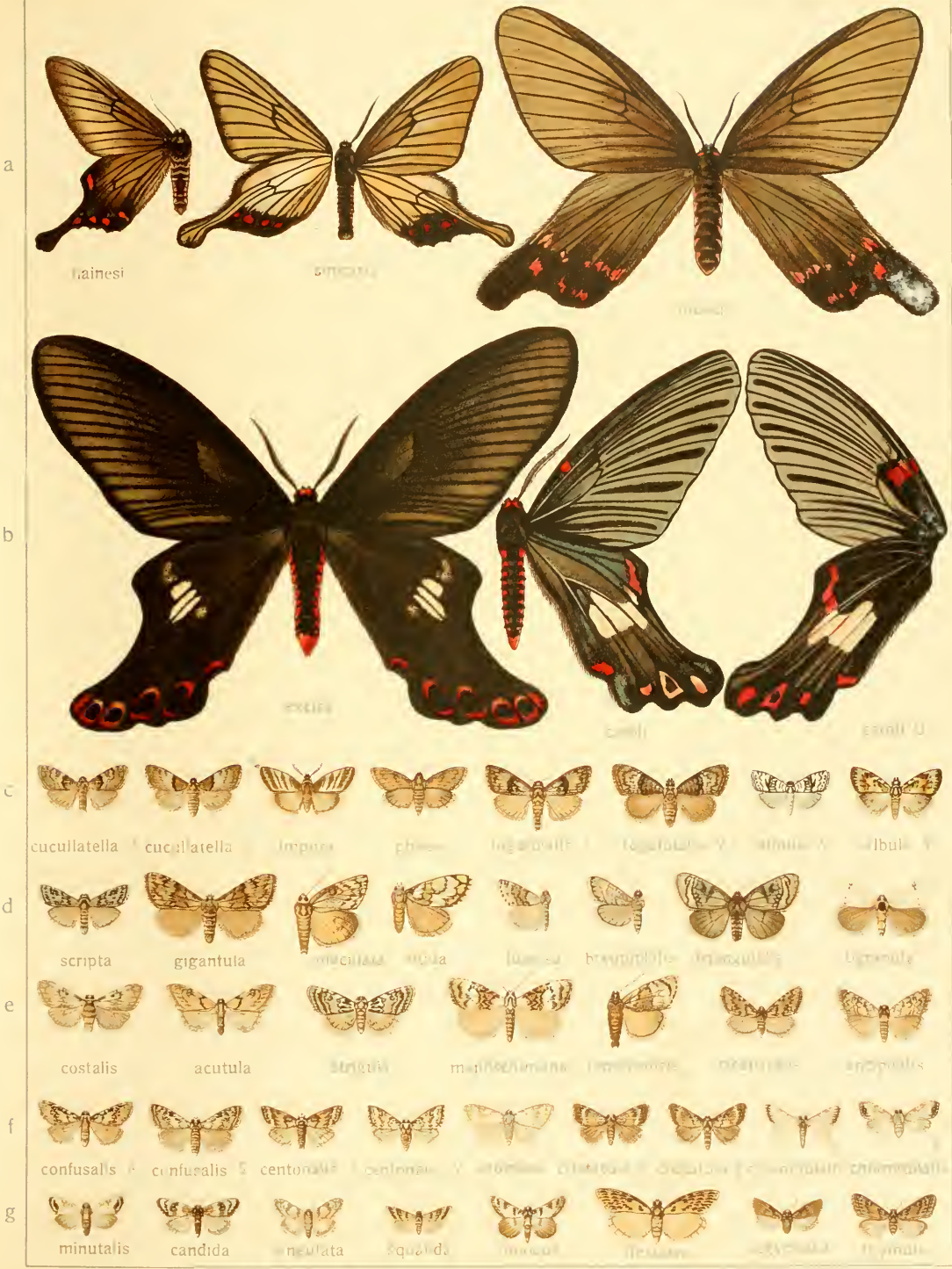
Pars I. Fauna palaeartica 2.



# Epicopeidae-Nolidae

11.

10.



Pars I. Fauna palaeartica II



# STIGMATOPHORA - ENDROSA

11

11

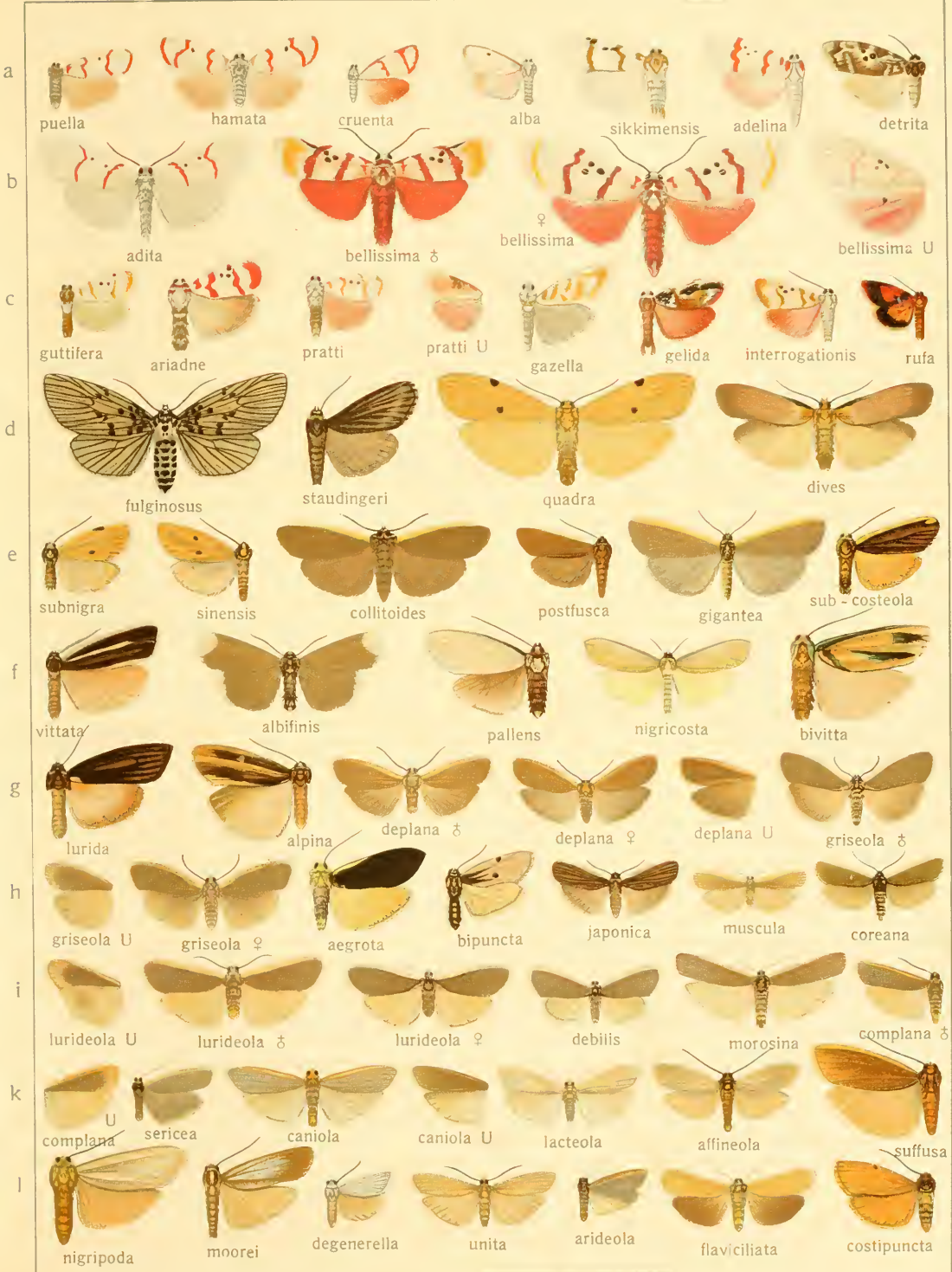




# Chionaema-Lithosia.

11.

12.



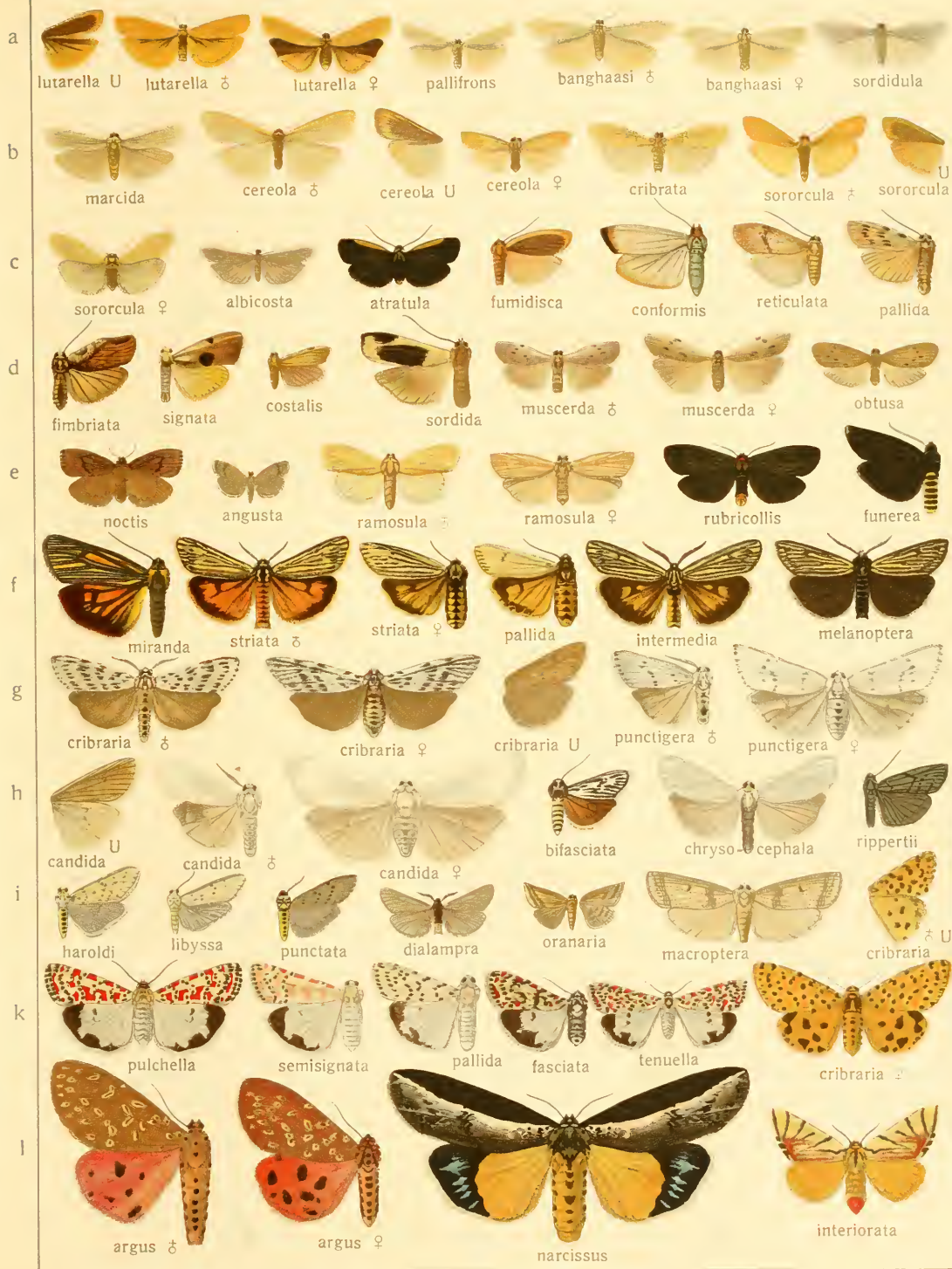
Pars I. Fauna palaeartica 2.





# Lithosia-Camptoloma.

II.





# Ocnogyna-Diacrisia.

II.

14.



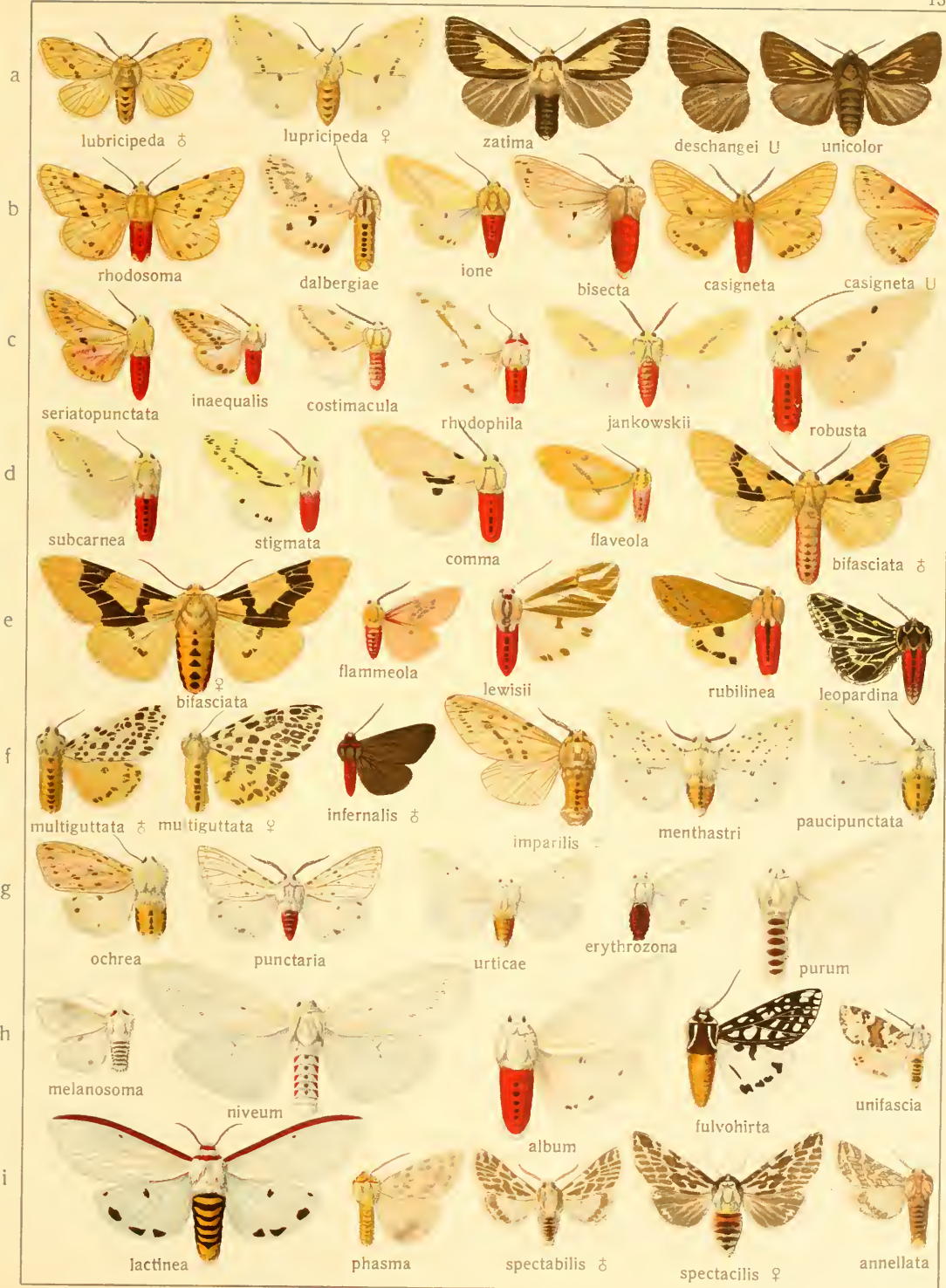
Pars I. Fauna palaeartica 2.



# Spilarctia- Alphaea.

11.

15.





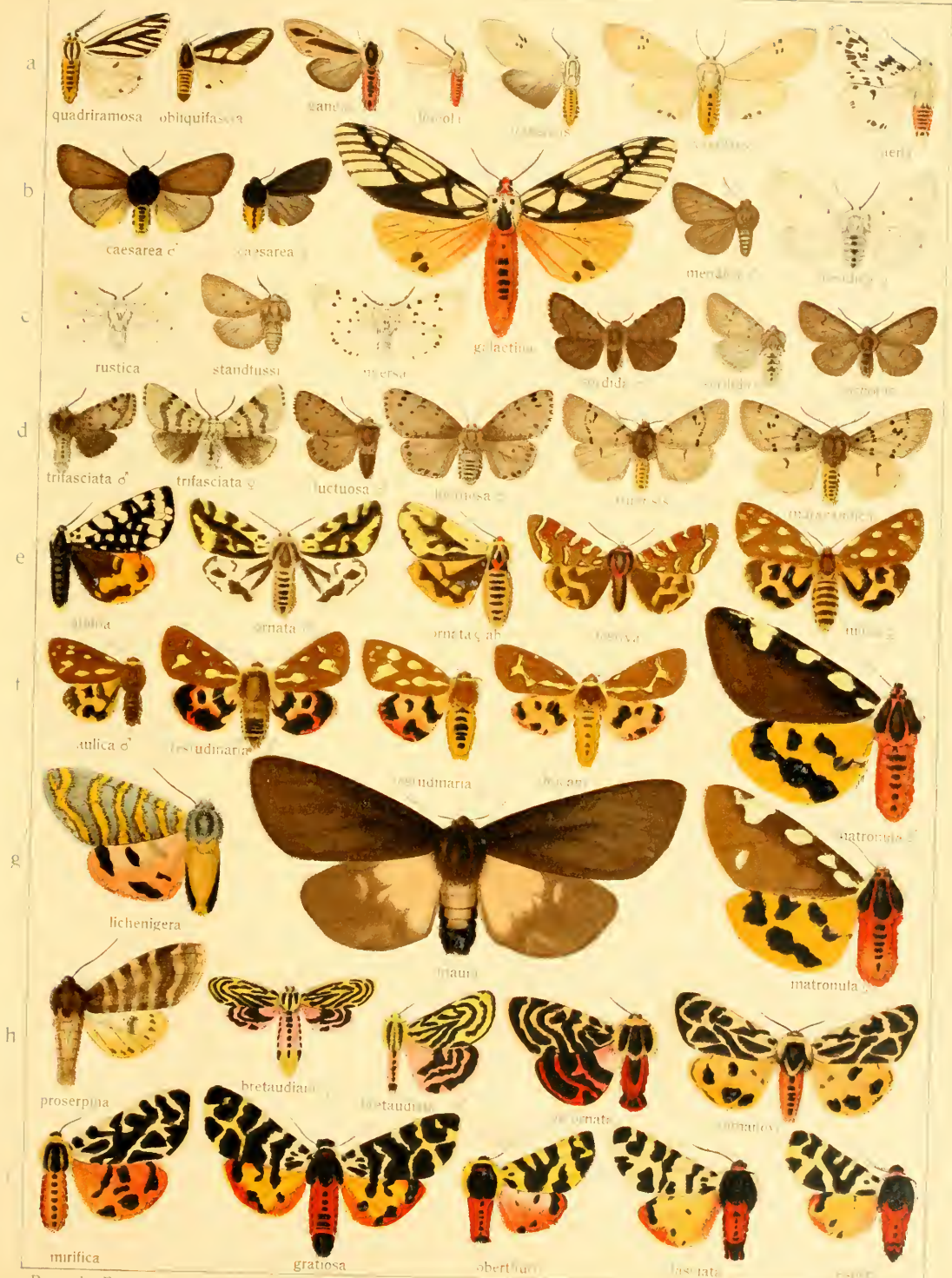
# OCNOGYNA - MICRARCTIA







# ALPHAEA - ARCTIA



Pars I. Fauna palaeartica 2.



# ARCTIA - NYCTEMERA



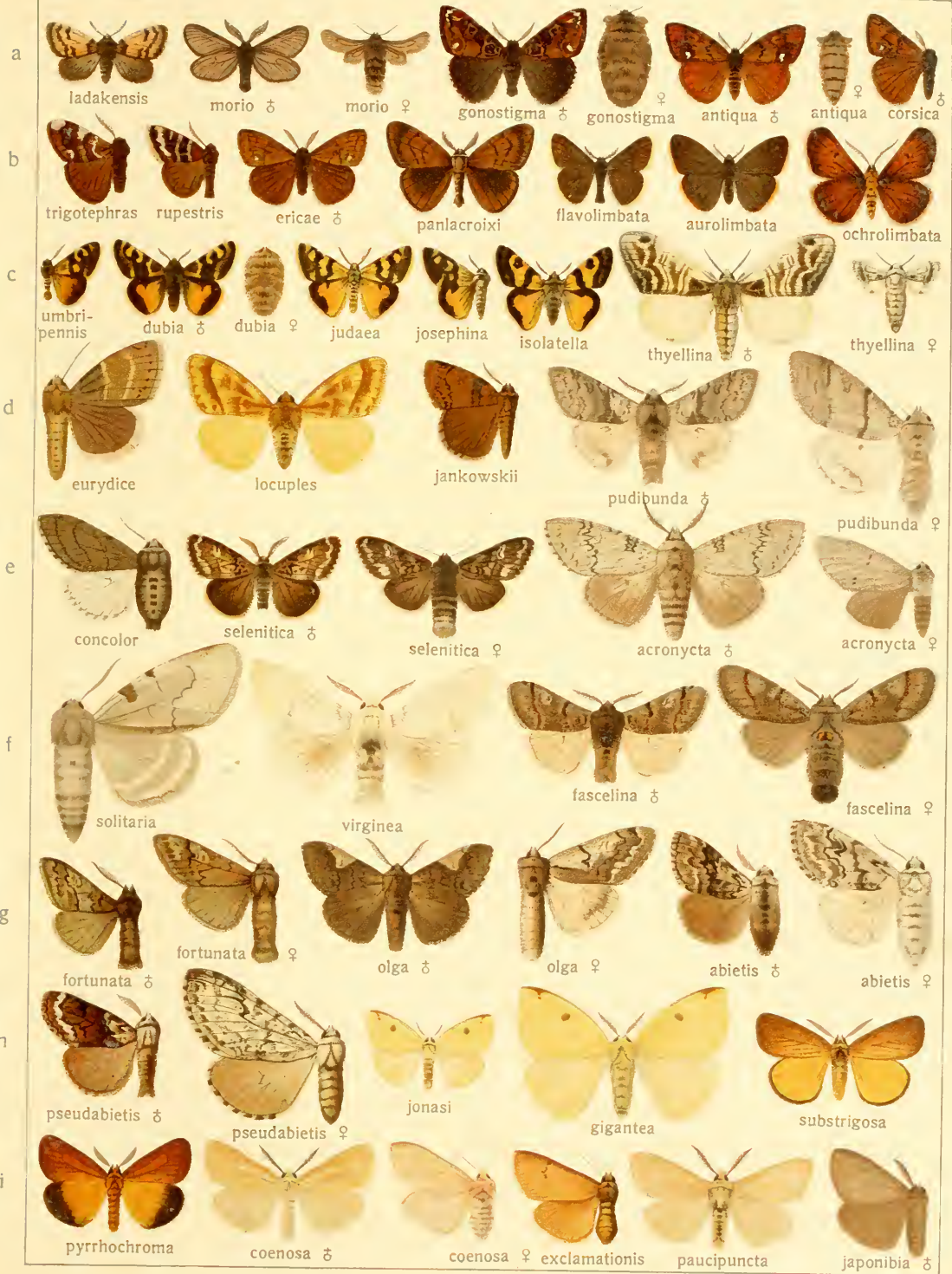
Pars 1. Fauna palaeartica 2.



# LACHANA-LAELIA.

II.

19.



Pars I. Fauna palaeartica 2.



# LAELIA-LYMANTRIA.

II.

20.

a



umbrina testacea



l-nigrum



salicis ♂



salicis ♀

b



auripes



cygna



ampla ♂



ampla U

bicolor

c



strigipennis



albofascia ♂



♂  
disparilis



♀  
disparilis



wladiwostkensis

d



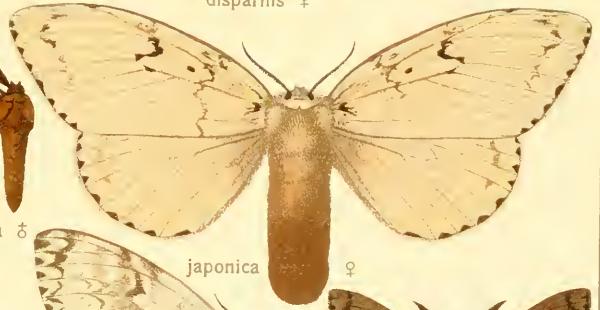
dispar ♂



♀  
dispar



japonica ♂



japonica ♀

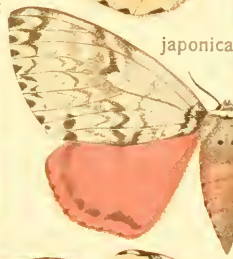
e



aurora ♂



♀  
aurora



mathura ♀



fusca ♂

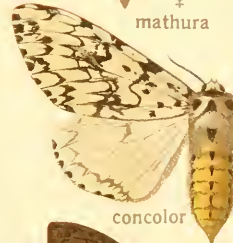
f



obsoleta ♂



♀  
obsoleta



concolor



nigra

g



monacha ♂



♀  
monacha



eremita ♂



♀  
eremita



atlantica ♂

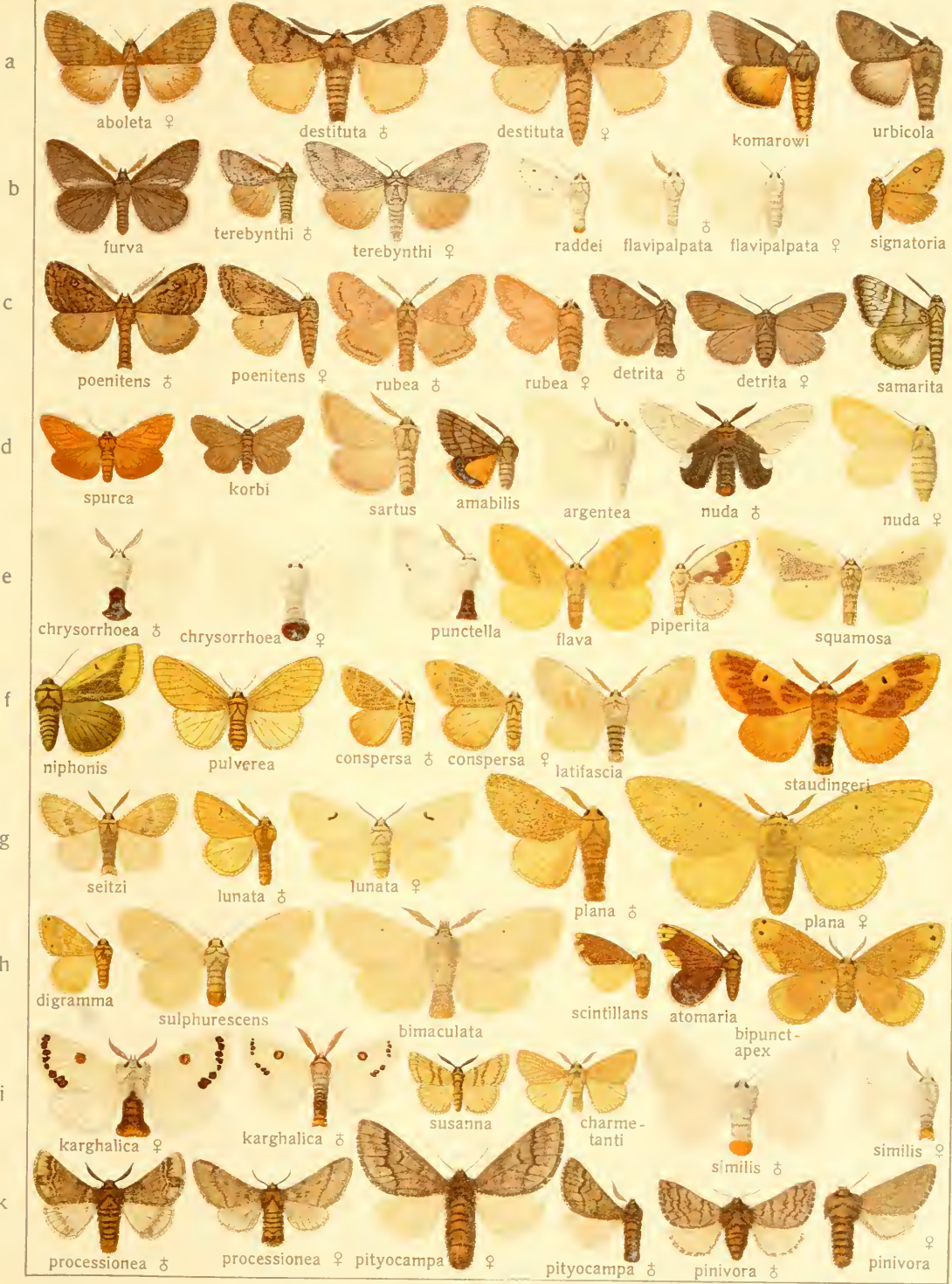




# LYMANTRIA-THAUMETOPOEA.

II.

21.



Pars I. Fauna palaeartica 2.



# VARMINA - ORETA





# EUPROCTIS - DREPANA





# CHONDROSTEGA-ERIOGASTER







# LASIOCAMPA

11

25



Pars I. Fauna palaeartica 2.



# LASIOCAMPA - COSMOTRICHE





# TRABALA- ODONESTIS



Pars I. Fauna palaeartica 2.



# DENDROLIMUS - PACHYPASA



Pars I. Fauna palaeartica 2









# LEMONIA - DREPANA



Plat. 1. Foun. p. laeaectica 2.







# NEORIS - LOEPA







# SAMIA - ACTIAS

11

13



Pars I. Fauna palaeartica 2.



# ACTIAS - RHODINIA





# AGLIA - OCINERA





# HERSE - KENTROCHRYSA LIS



Pars I. Fauna palaeartica 2.





# KENTROCHRYSA LIS - MARUMBA



Pars I. Fauna palaeartica 2.



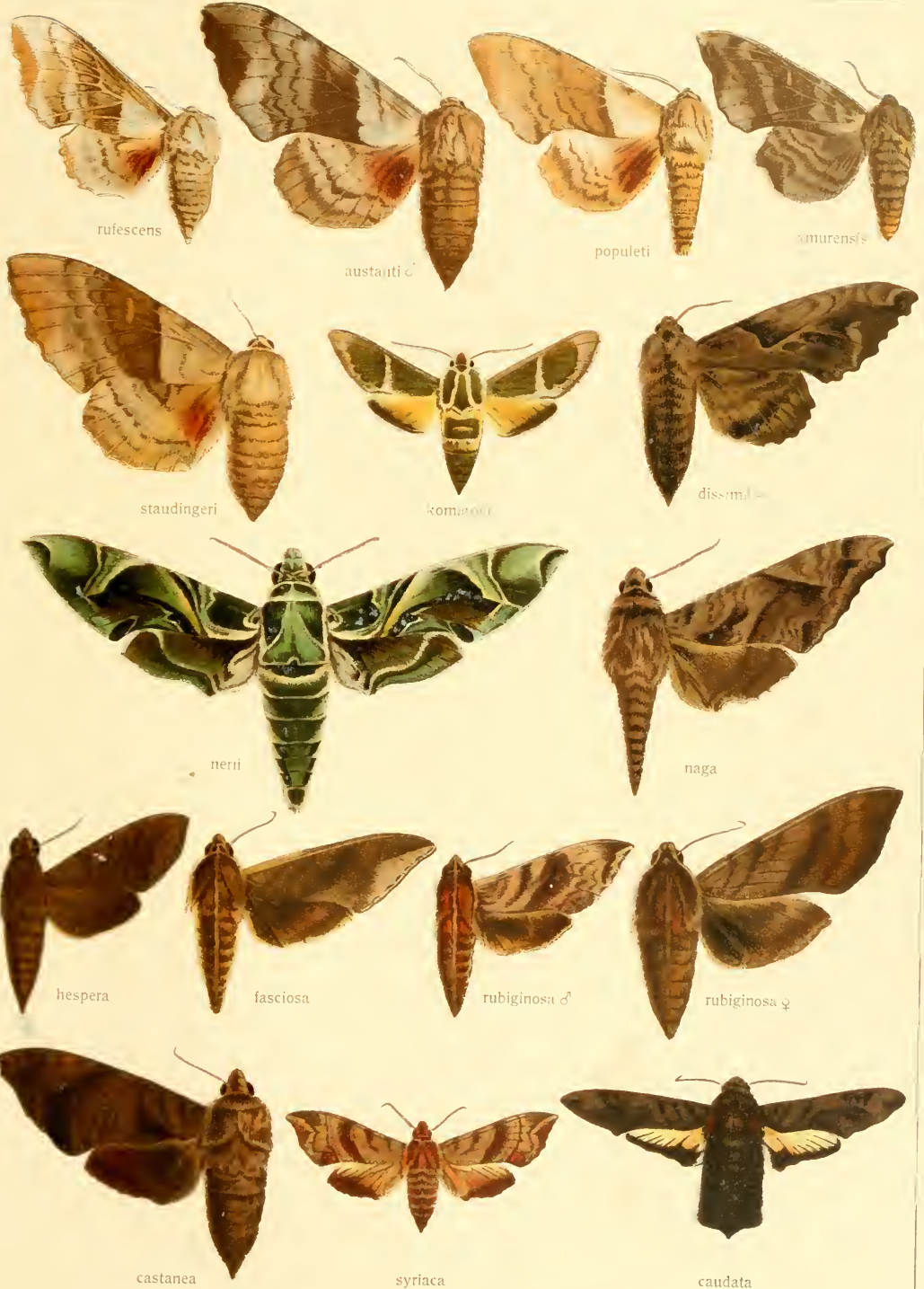
# MARUMBA - AMORPHA



Pars I. Fauna palaeartica 2.

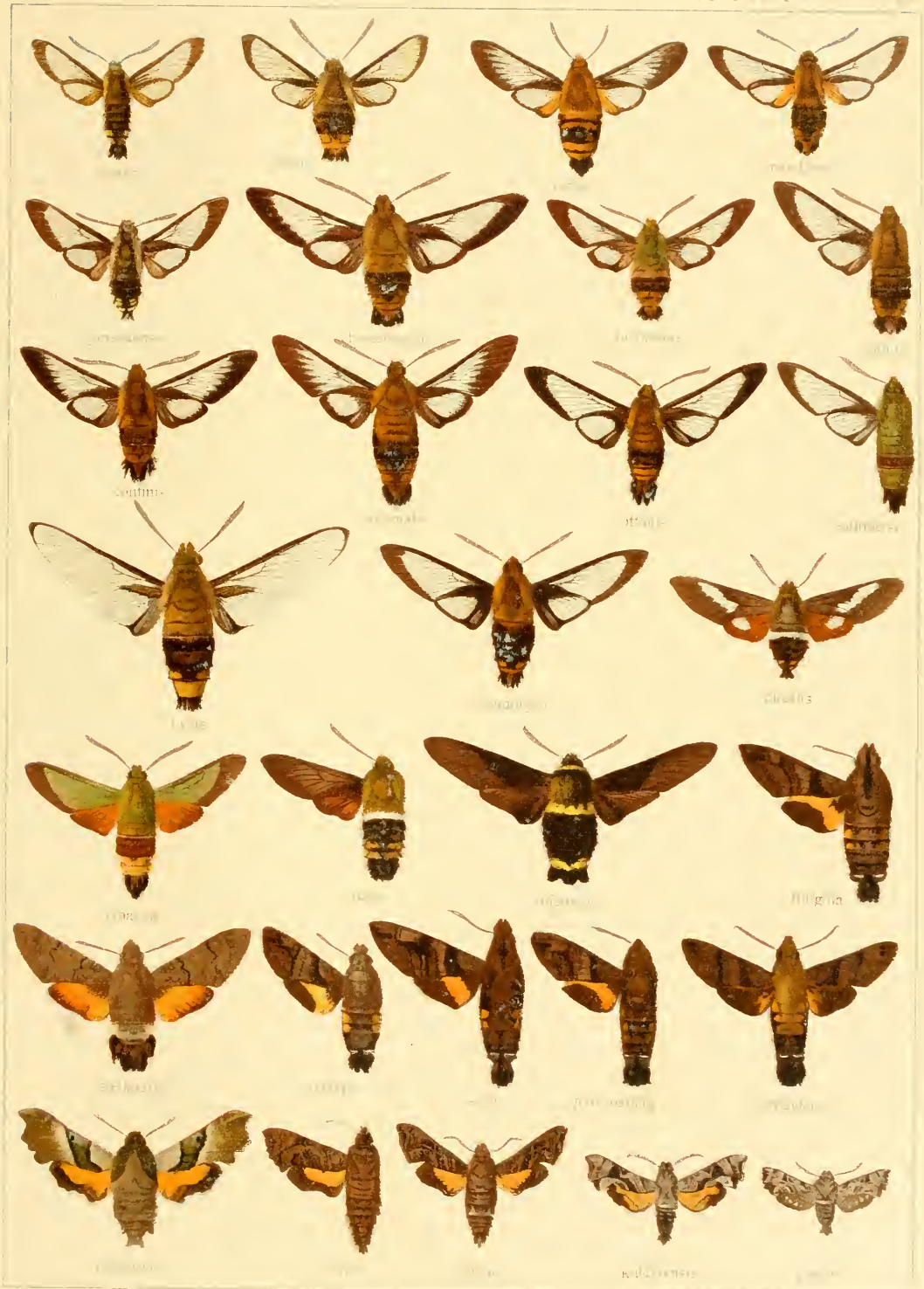


# AMORPHA - SPHECODINA





# HAEMORRHAGIA - DEIDAMIA











# PERGESA - RHAGASTIS



Pars I. Fauna palaeartica 2.



# SPHINGES HYBRIDAE





# DUDUSA - STAUROPOUS







# UROPYIA- NOTODONTA





# NOTODONTA - GELASTOCERA



Pl. 1. Fauna palaeartica 1.



# PTEROSTOMA - RHEGMATOPHILA



Pars I. Fauna palaeartica 2



# EUCHERA - EPIPLEMA



Pars I. Fauna palaeartica 2.





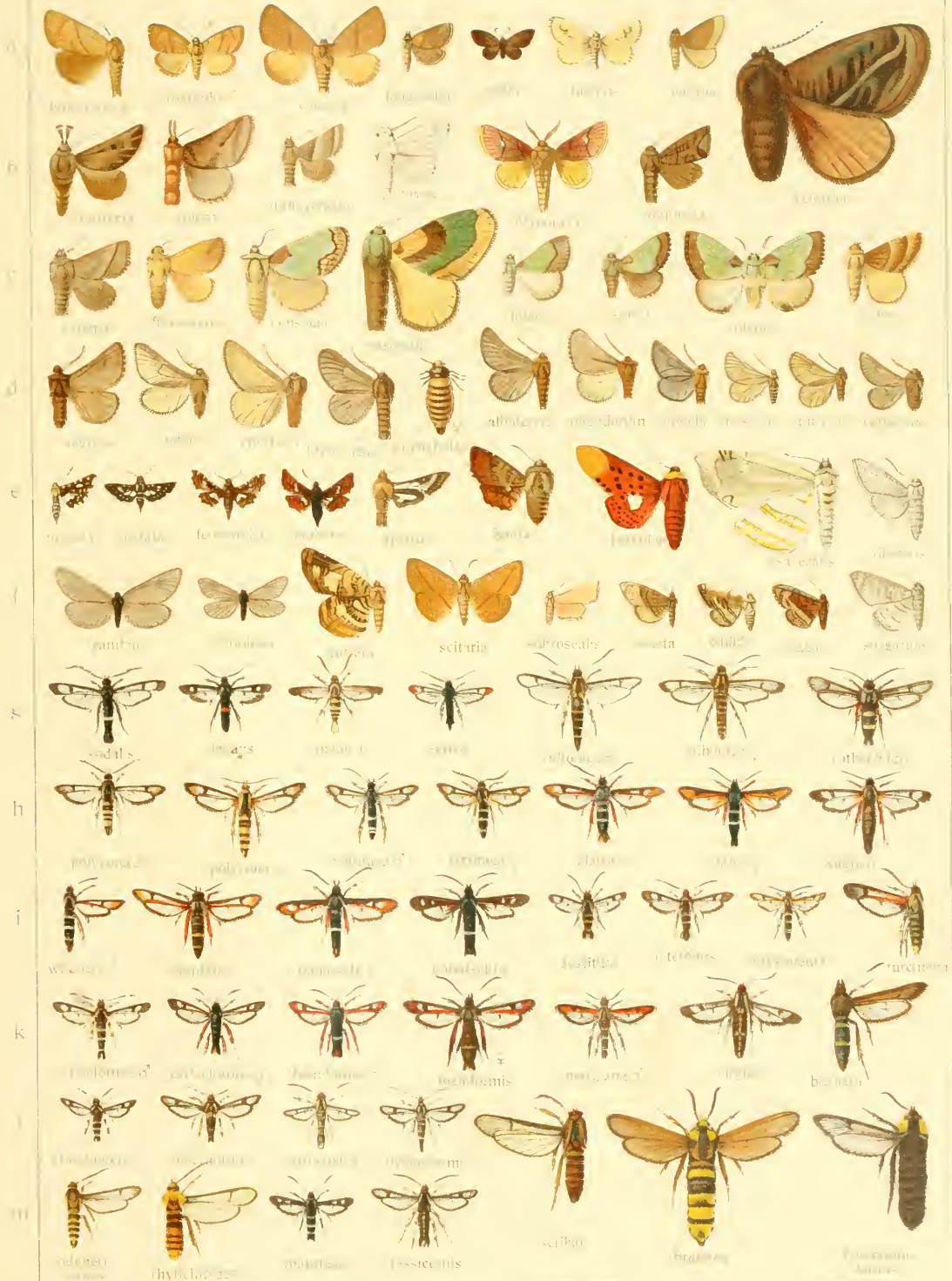
# PYDNA - COCHLIDION



Plat. I. Falna palaeartica 2.



# COCHLIDION - AEGERIA





# MELITTIA - CHAMAESPHEUS





# CHAMAESPHECIA - DYSPESSA

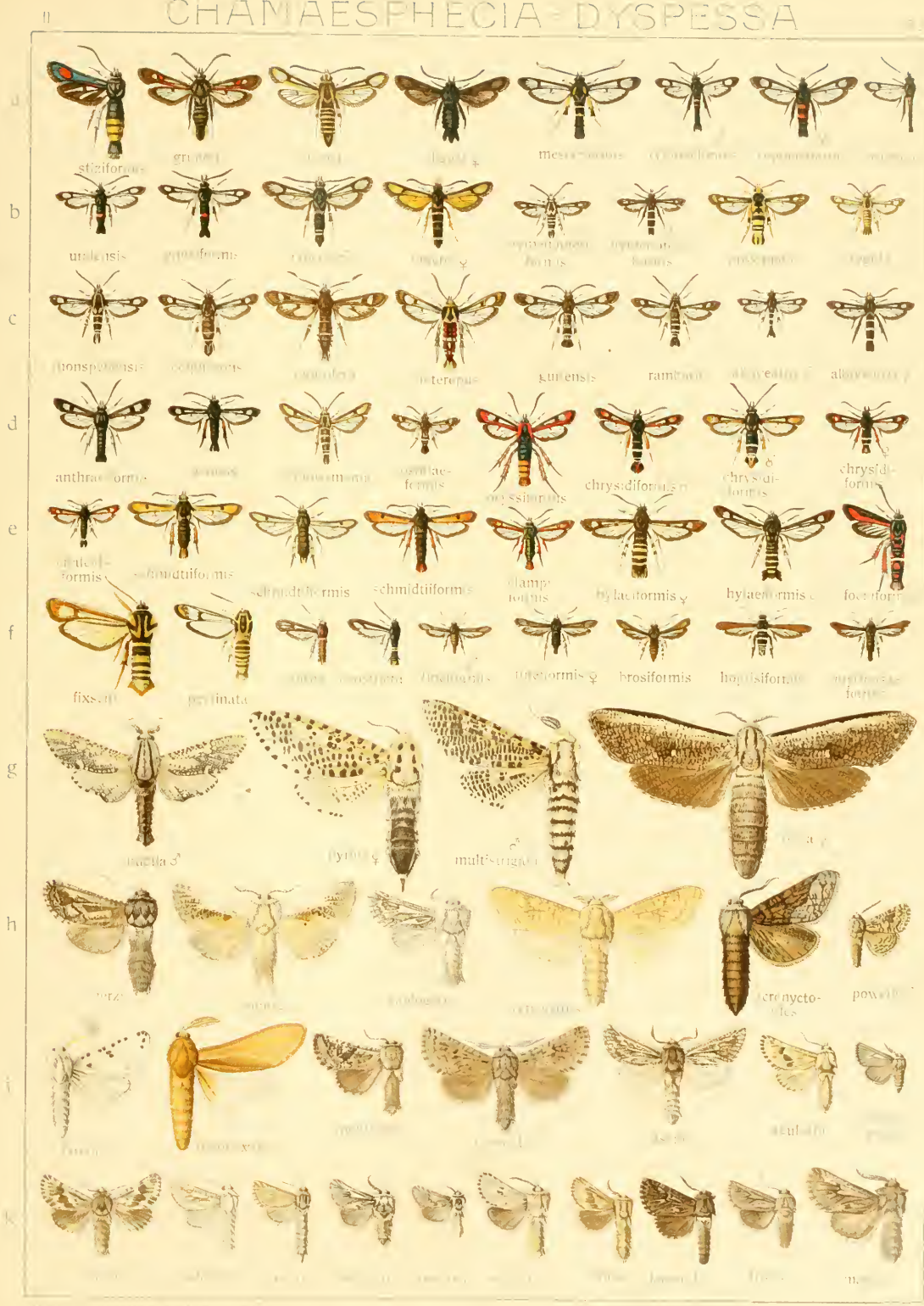


Fig. 1-100. *Chamaesphecia* species





# COSSUS - HEPIALUS



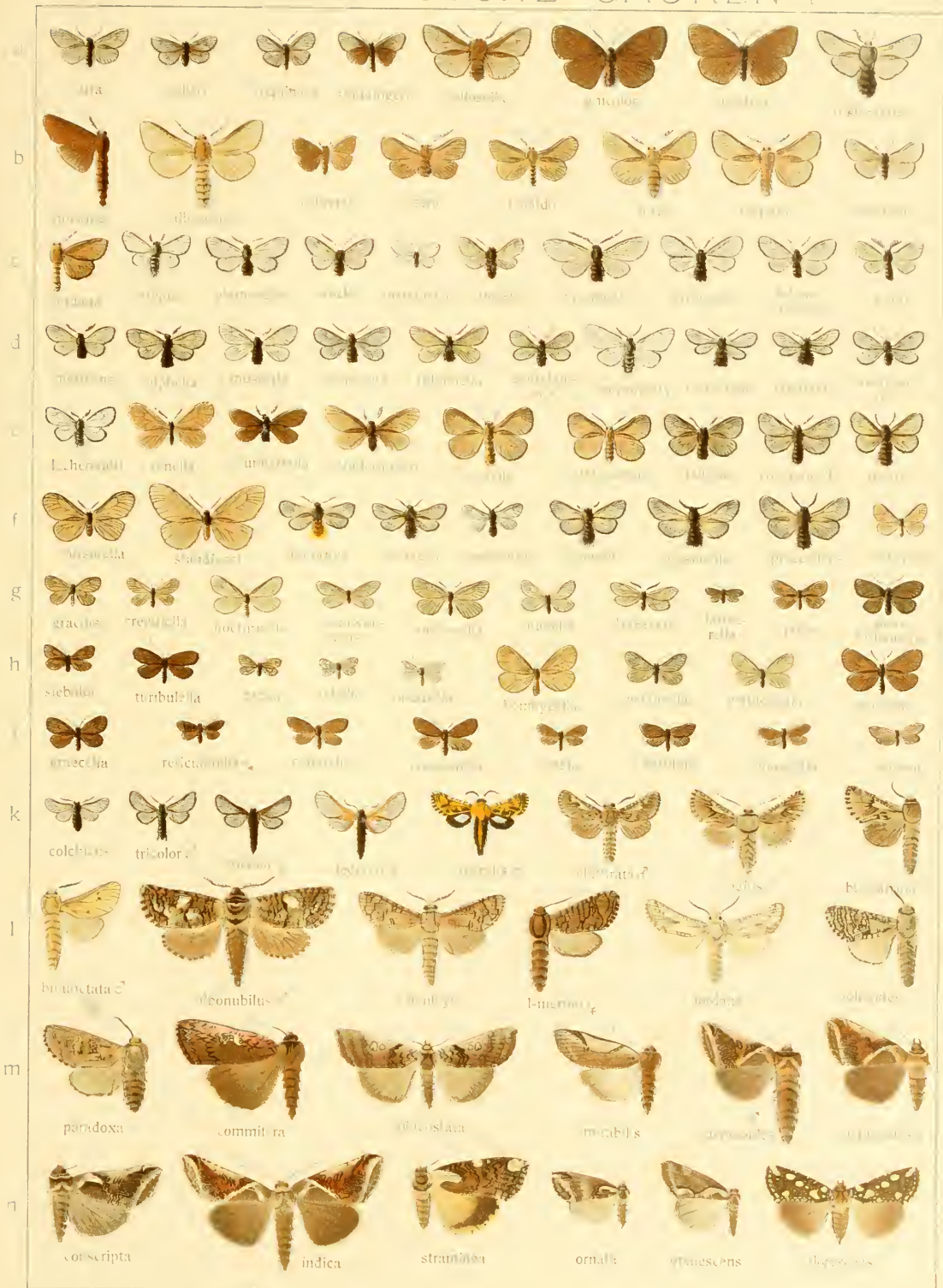
Pars I. Fauna palaeartica 2.







# ACANTHOPSYCHE - GAURENA







Pars II. Fauna palaeartica 2.



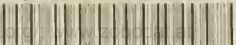








SMITHSONIAN INSTITUTION LIBRARIES



3 9088 00726 4195