

Contribution to our knowledge of Ascomycetes of India. XIV.

By S. T. Tilak

(Botany Department, Marathwada University, Aurangabad-Dn, India.)

(With figs. 3)

The present paper constitutes fourteenth in the series published earlier (1960—1966) and deals with the description of new species of ascomycetes eg. *Wettsteinia phoenicis* sp. nov., on *Phoenix sylvestris* Roxb., *Diaporthe acaciae* sp. nov. on *Acacia arabica* Willd. and *Dothidea ilicis* sp. nov. on *Ilex europaeus* Royle. These have been presented as new to science on the basis of comparative morphological studies and host specificity.

44. *Wettsteinia phoenicis* sp. nov.

Perithecia dispersa, solitaria vel greges minutos formantia, basi applanata, ostiolo papilliformi erumpentia, brunnea vel obscura,

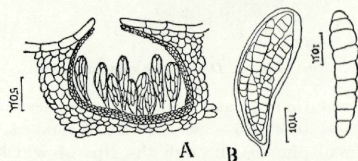


Fig. 1. *Wettsteinia phoenicis*.

110—160 × 150—180 μ; asci pauci, breviter stipitati, crasse tunicati, antice incrassati, 8-spori, 65—96 × 16—22 μ; sporae fusiformes, biseriatae, primum hyalinae, postea flavo — brunneae multiseptatae ad septa constrictae, muco hyalino obvolutae, 24—26 × 6—9.5 μ.

Perithecia scattered, embedded in the host tissue, solitary or rarely in groups, with a flattened base, projecting out with a papillate ostiolo, brown to dark in colour, 110—160 × 150—180 μ. Asci few originating from basal region, shortly stipitate, bitunicate, hyaline, heavily double walled at the apex, 8 spored, 65—96 × 16—22 μ. Ascospores fusiform, biseriatae, hyaline, later changing to yellow brown, transversely septate and no vertical septa, constricted at septum, with gelatinous coat on outer wall, 24—36 × 6—9.5 μ.

Collected on dead rachis of *Phoenix sylvestris* Roxb., in the month of March 1966, Aurangabad, Leg. S. T. Tilak and deposited in the herbarium of Marathwada University under number MUH. 201 (Tilak type).

45. *Diaporthe acaciae* sp. nov.

Stromate late effuso, corticis superficiem nigrificante, intus plus minusve distincte marginato; perithecia pauca circinantia vel congesta, 330—420 × 225—350 μ , ostioli convergentibus erumpentia; asci clavati, 8-spori, 64—88 × 6.4—8 μ ; sporae biseriatae, fusiformes, grosse 6—8-guttulatae, 1-septatae, ad septum constrictae, 14.4—17.6 × 4—5 μ .

Stromatic area usually wide spreading, the dorsal zone usually blacking the surface of the bark, ventral zone always present at the

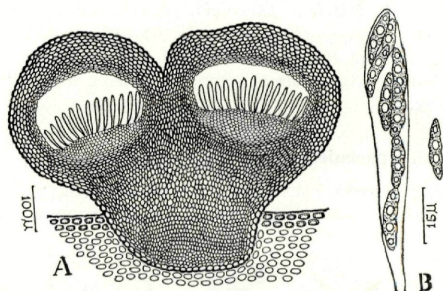


Fig. 2. *Diaporthe acaciae*.

margin of the stromatic area and usually more or less traceable beneath it. Perithecia 330—420 × 225—350 μ , in small clusters, within the bark raising it into small pimples through the tips of which the clusters of black ostioles emerge. Asci clavate measuring from 64—88 × 6.4—8 μ , 8 spored, lying loose in the cavity at maturity. Ascospores narrowly fusiform, hyaline, biseriate, constricted in the middle, with three to four oil drops in each, 14.4—17.6 × 4—5 μ .

Collected on dead stems of *Acacia arabica* Willd., in the month December 1965, Aurangabad, Leg. S. T. Tilak and deposited in the herbarium of Marathwada University under number MUH. 202 (Tilak type).

46. *Dothidella ilicis* sp. nov.

Stroma superficiale, pulvinatum, uniloculare, cellulis superficialibus obscuris et crassiusculis, 270—400 × 75—105 μ ; asci numerosi, paraphysati, tenuiter tunicati, cylindricei, 8-spori, 45—65 × 8—12 μ , sporae biseriatae, ellipsoideae vel cylindraceae, medio septatae, hyalinae, 9—15 × 3—5.8 μ .

Stroma superficial, erumpent, cushion shaped, forming crusts, uniloculatae, outer cell walls dark and thick $270-400 \times 75-105 \mu$. Asci originating from basal cushion like fertile layer, numerous, paraphysate, unitunicate, pedicellate, cylindrical, 8 spored, $45-65 \times 8-12 \mu$. Ascospores bicelled, hyaline, biserially arranged, elliptic to cylindrical, transverse septum in the middle, $9-15 \times 3-5.8 \mu$.

Collected on dead twigs of *Ilex europaeus* Royle, in the month of October 1965, Kodaikanal, Leg. S. T. Tilak and deposited in the herbarium of Marathwada University under number MUH. 203 (Tilak type).

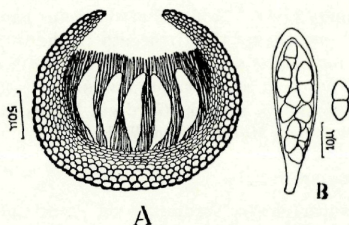


Fig. 3. *Dothidella ilicis*.

The Saccardian genus *Plowrightia* and *Dothidea* of Fries ex Fries have been now combined by Arx (1948) and Loffer (1957). Arx (1958) extensively studied the genus *Dothidella* which is characterised by sub cuticular hypostroma and hyaline two celled ascospores.

Acknowledgement

Thanks are due to Dr. Emil Müller for confirmation in the identity of fungus, to Marathwada University for laboratory facilities and finally to Dr. F. Petrak for the latin diagnoses of new species.

References.

- Arx, J. A. von. 1958. Über einige Ascomycetes aus Südamerika. Acta Bota Neerlandica 7: 503—518.
- Dennis, R. W. G. 1960. British cup Fungi and their allies. Roy. Society.
- Loffer, W. 1957. Untersuchungen über die Ascomycetengattung *Dothidea* Fr. Phyto. Z. 30: 349—386.
- Tilak, S. T. & S. B. Kale. 1964. Second contribution to our knowledge of Indian Ascomycetes. Mycopath. et Mycol. appl. XXVII: 60—64.
- Tilak, S. T. 1966. Contribution to our knowledge of Ascomycetes of India. III. Mycopath. et Mycol. appl. XXVIII: 86—89.
- Tilak, S. T. & Ramchandra Rao. 1966. ibdem V l. c. XXVIII: 90—94.
- Tilak, S. T. 1966. ibdem VI.—XII. l. c. in press.
- Vishwanathan, T. S. & S. T. Tilak. 1960. Additions to our knowledge of Ascomycetes of India. l. c. XIII: 237—242.

ZOBODAT - www.zobodat.at

Zoologisch-Botanische Datenbank/Zoological-Botanical Database

Digitale Literatur/Digital Literature

Zeitschrift/Journal: [Sydowia](#)

Jahr/Year: 1966/1968

Band/Volume: [20](#)

Autor(en)/Author(s): Tilak S. T.

Artikel/Article: [Contribution to our Knowledge of Ascomyetes of India. XIV. 271-273](#)