

## The collection of Dr Ferdinand Schur in the Herbarium of Ivan Franko National University of Lviv [LW]: Family Iridaceae Juss.

Taras Fostiak & Lydia Tassenkevich

*Summary:* The collection of Dr J. P. F. Schur is one of the most precious botanical collections stored in the Herbarium of Ivan Franko National University of Lviv [LW]. The family Iridaceae is represented by 42 specimens, several of them are types. A catalogue of these specimens is presented and information provided on labels and in type diagnoses is given.

*Keywords:* LW, herbarium, collection, Schur, Iridaceae, *Iris*, *Crocus*, *Gladiolus*, type specimens

The Herbarium of Ivan Franko National University of Lviv [LW] was founded by Prof. Suibert Schivereck Burchard in 1783. It is the oldest herbarium in Ukraine and it is among the thirty oldest herbaria of the world. It contains about 300,000 plant specimens with many valuable collections. One of the most valued of them is the collection of Dr Philipp Johann Ferdinand Schur, a German-Austrian pharmacist and botanist, who devoted nine years of his life to study the flora of Transylvania (now in Romania) (SPETA 1994).

According to the data in Schur's highly regarded published work 'Enumeratio Plantarum Transsylvanicae' (SCHUR 1866), the flora of the region comprises over 4,600 species. Specimens collected by Schur are deposited in several European herbaria: Botanischer Garten und Botanisches Museum Berlin-Dahlem [B], Botanische Staatssammlung München [M], Friedrich-Schiller-Universität Jena [JE], Herbarium Senckenbergianum [FR], Muséum National d'Histoire Naturelle [P], Naturhistorisches Museum Wien [W], Naturhistoriska riksmuseet [S], Royal Botanic Garden Edinburgh [E], Royal Botanic Gardens, Kew [K], Universität Göttingen [GOET] and others. The LW collection includes about 8,000 specimens of 3,459 species from 725 genera and 121 plant families (KHMIL et al. 2007). As stated by SPETA (1994), it is the largest collection of specimens collected by Schur.

The Schur-collection kept in Lviv contains many type specimens. Some of them are digitized and their images are available at Virtual Herbaria JACQ (<http://herbarium.univie.ac.at/index.html>).

Iridaceae in Schur's collection are presented by 27 specimens of *Iris*, 9 specimens of *Crocus* and 6 specimens of *Gladiolus*. A catalogue of these 42 specimens with transcription of schedae and type information is provided below.

**Presented information.** Name of specimen determined by Schur (determinations by other scientists were not given until now); location; date of collection; name of the collector; type information, inventory number of the specimen in LW.

Text on labels (including underlinings) is not translated. Unclear parts of handwriting are marked with '[...]', additional information and specification from authors of this article is pointed out in square brackets. If no date was given on the label, s.d. (sine dato) is marked.

The corresponding geographical names in Romanian to those cited on labels by F. Schur in German are: Hammersdorf – Gușterița; Hermannstadt/Cibinium – Sibiu; Kapellenberg – Tâmpa; Kronstadt/Coronam – Brașov; Thorda – Turda; Rothberger – Sebeș; Almaser – Merești; Talmats – Tâlmăciu; Schlossberg – Sântana de Mureș; Stolzenburg – Slimnic; Klausenburg – Cluj-Napoca; Großscheuern – Șura Mare; Kleinscheuern – Șura Mică; Vizakna – Ocna Sibiului; Borbunt – Bărbant; Hanebach – Hamba; Rodna – Rodna; Bulla – Buia; Götzenberg – Cîsnădioara; Heltau – Cîsnădie; Arpas – Arpașul Mare; Burzen R. – Bârsa.

1. *Iris pallida* Lam.; *I. odoratissima* Jacq.

Oberhalb der ersten Weinberge bei Hammersdorf (in [...]laren); Juni 1847; Dr Schur. [LW00211718]

2. *Iris cucullata* Schur; an *Iris neglecta* Hort. Bot. Mag. 2435 aff. *I. pallidae* Lam.

Auf der Gärten in und um Hermannstadt; Juni; Dr Schur.

**Specimina originalia.** *Iris* × *cucullata* Schur ex Schur in Sertum florae Transsilvania: 74, 1853 (SCHUR 1853) n. 2759 nom. subnud. No location of the collection is given; a full description of the hybrid between *I. pallida* Lam. and *I. × germanica* L. is given in Enumeratio Plantarum Transsilvaniae (SCHUR 1866); designated by T. Fostiak 2016-05-22. [LW00211717]

3. *Iris squalens* L.; aff. *I. sambucinae* L.

Flora Transsilv. (Bmg. [from Baumgarten's collection]); [s.d.]; J.C.G. Baumgarten. [LW00211719]

4. *Iris sambucina* L.

In mont. gram. calcareis Transilv. e monte Tepei; Juni; Dr Schur. [LW00211720]

5. *Iris sambucina* L.

In montibus calcareis. In mont. Kapellenberg prope Coronam (unicum); Juni; Dr Schur. [LW00211721]

6. *Iris hungarica* W.Kit.; *I. bisflorens* Host.

Auf der Rothberger Burg. Flora Transsilv.; Mai; Dr Schur. [LW00211722]

7. *Iris hungarica* W.Kit.

Auf Kalkfelsen in der Hassadek bei Thorda; 10 Jul. 1853; Dr Schur. [LW00211723A]

On the same herbarium sheet:

8. *Iris hungarica* W.Kit.

Bei der Almaser Höhle. Bielz.; Juni; E.A. Bielz. [LW00211723B]

9. *Iris Fieberi* Seidl var. *monantha* Schur; = *I. furcata* M. Bieb. var. *uniflora*

in collibus prope Talmats. Nagelflūs; 15 Mai 1850; Dr Schur.

**Specimina originalia.** *Iris Fieberi* Seidl var. *monantha* Schur in Enum. pl. Transs.: 655, 1866 "Auf dem Schlossberge bei Kronstadt. Mai." This specimen was collected before the publication, but the collection site was not mentioned (SCHUR 1866).

**Specimina authentica.** *I. furcata* M. Bieb. var. *uniflora* Schur in herb. unpublished; designated by T. Fostiak 2016-05-22. [LW00211724]

10. *Iris Fieberi* Seidl

Auf Bergabhängen bei Hammersdorf; mitte Mai; Dr Schur. [LW00211725]

11. *Iris Fieberi* Seidl; *I. biflora* Schauer.

Auf dem Salomonsfelsen bei Kronstadt. Kalk; Juni; Dr Schur. [LW00211726]

12. *Iris bohémica* [T.] F.W. Schmidt; *Iris nudicaulis* Schauer.

Auf dem Kapellenberg bei Kronstadt, Kalk; 9 Juny 1854; Dr Schur. [LW00211727]

13. *Iris furcata* M. Bieb.; *I. bohémica* T. [F.] W. Schm.  
in montie Kapellenberg prope Coronam; Mai; Dr Schur. [LW00211728]
14. *Iris pumila* L. var. *parviflora*; = *I. Clusiana*  
in collibus apricis arenosis argillosis prope pagam Hammersdorf; April; Dr Schur.  
**Specimina authentica.** *Iris pumila* L. var. *parviflora* Schur in herb. unpublished; designated by T. Fostiak 2016-05-22. [LW00211729A]  
On the same herbarium sheet:
15. *Iris pumila* L.  
in collibus graminosis Transsilvania prope pagum Stolzenburg; April; Dr Schur. [LW00211729B]
16. *Iris pumila* L. var. *ochroleuca*; = *I. transsilvanica* Schur [nom. superfl.]  
in collibus arenosis apricis prope pagam Hammersdorf; April; Dr Schur.  
**Typus probaliter/specimina originalia.** *Iris pumila* L. var. *ochroleuca* Schur in herb. unpublished; designated by T. Fostiak 2016-05-22. [LW00211730]
- In his early work, SCHUR (1853) used *I. transsilvanica* as a superfluous name for *I. clusiana*. He mentioned it in his later work (SCHUR 1860), where he also described a *I. transsilvanica* Schur ex Schur. In his conclusive work (SCHUR 1866), he decided to designate *I. transsilvanica* as variety of *I. clusiana*: *I. clusiana* var. *transsilvanica* (Schur) Schur. No additional original material is mentioned in these publications.
17. *Iris transsilvanica* Schur [nom. superfl.]; an var. *flavi et parviflora Iridis pumilae* L.  
In collibus argillosis apricis Transilv. Hammersdorf bei Hermannstadt; April; Dr Schur. [LW00211731]
18. *Iris transsilvanica* Schur [nom. superfl.]  
in collibus prope pagum Hammersdorf. In fructibus; Juni; Dr Schur. [LW00211732]
19. *Iris tristis* Rchb.; *Iris Reichenbachii* Heuff.  
In rupestribus calcareis Transsilv. Klausenburg; April; G. Wolff. [LW00211733]
20. *Iris binata* Schur  
auf dem Zakelsberg bei Großscheuern Sandboden; mid. Mai; Dr Schur.  
**Lectotypus.** *Iris* × *binata* Schur in Oesterr. Bot. Z. 10: 354, 1860. “In collibus agrilloso-arenosis in colle Zackelsberg prope pagum Stolzenburg. April. Mai. El. L500’” (SCHUR 1860); designated by T. Fostiak 2016-05-22. [LW00211734] (Fig. 1)
21. *Iris spuria* L.; *I. spathulata* Lam.  
in pratis humidis subsalsis prope pagum Kleinscheuern; Mai; Dr Schur. [LW00211736]
22. *Iris sibirica* L.  
Hermannstadt; 25 Juni 1850; Dr Schur. [LW00211735]
23. *Iris Pseudo-sibirica* Schur; = *I. sibirica* var. *salsa-flaviflora*  
in paludosis salsis prope Vizakna; Juli 1846; Dr Schur.  
**Holotypus/Lectotypus.** *Iris sibirica* L. var. *salina* Schur in Enum. pl. Transs.: 657, 1866 “Auf Sumpfboden, Salzboden, auf dem Schaukelmoore (überwachsener Salzteich) bei Salzburg. Jul. 1846” (SCHUR 1866); designated by T. Fostiak 2016-05-22.  
**Specimina originalia.** *Iris Pseudo-sibirica* Schur in Enum. pl. Transs.: 657, 1866; designated by T. Fostiak 2016-05-22.  
**Specimina authentica.** *Iris sibirica* L. var. *salsa-flaviflora* in herb. unpublished; designated by T. Fostiak 2016-05-22. [LW00211737]

T. FOSTIAK & L. TASENKEVICH

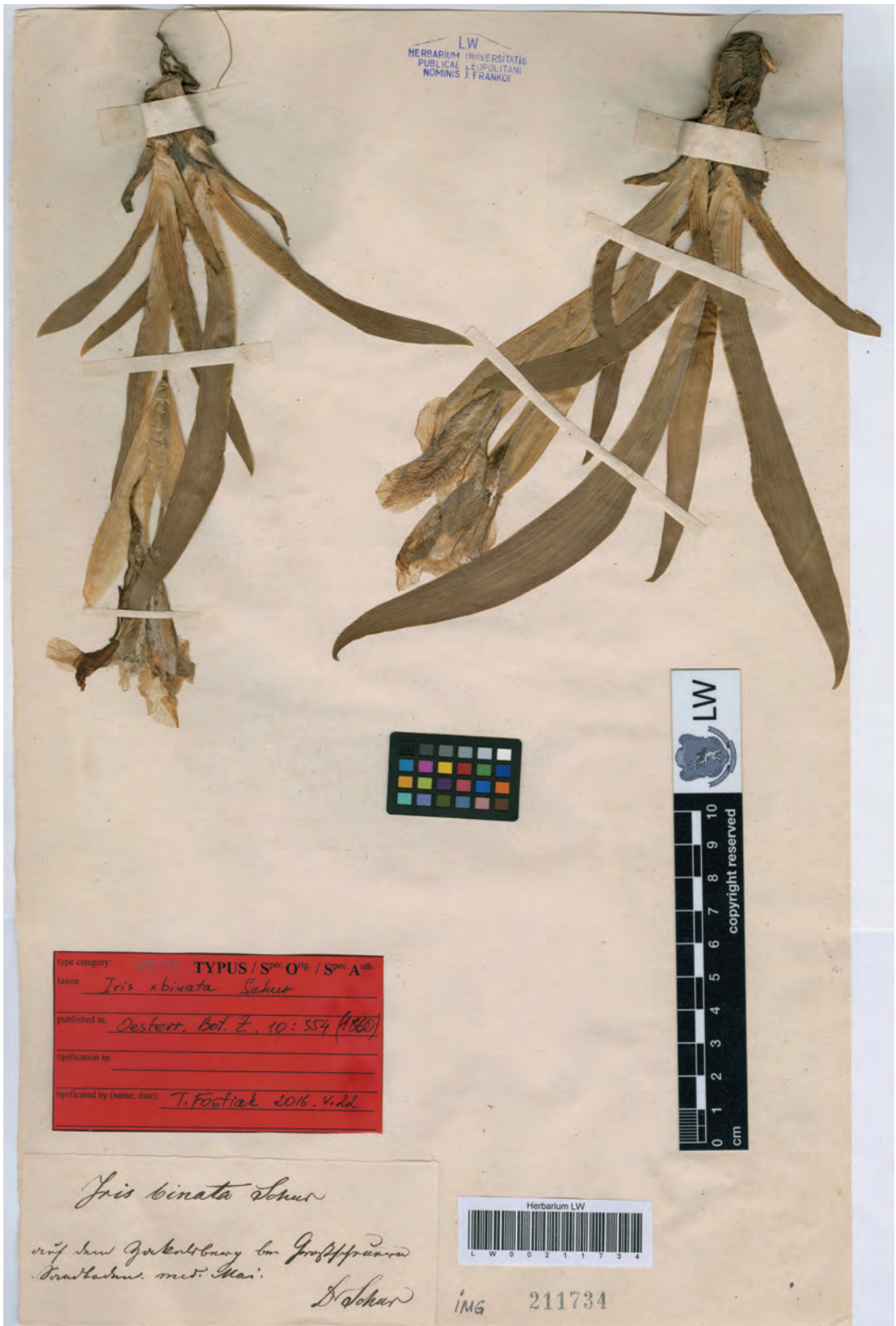


Figure 1. Herbarium sheet of *Iris x binata* Schur. Type specimen.

## Collection of F. Schur in Herbarium LW: Iridaceae

24. *Iris graminea* L.

In fruticetis Transsilv. im Ps[...]garten bei Stolzenburg; 10 Juni 1850; Dr Schur. [LW00211738]

25. *Iris Pseudo-Cyperus* Schur; = *I. graminea* var. *robusta-latifolia*

in collibus fruticosus prope Borbunt in monte Bilak; 7 Juli 1853; Dr Schur.

**Lectotypus.** *Iris Pseudo-Cyperus* Schur in Enum. pl. Transs.: 657, 1866 “Zwischen Dornengebüsch bei Stolzenburg, auf dem Billak, bei Klausenburg (Wolff sub I. Graminea). Jun. Jul.” (SCHUR 1866); designated by T. Fostiak. 2016-05-22.

**Specimina authentica.** *Iris graminea* L. var. *robusta-latifolia* Schur in herb. unpublished; designated by T. Fostiak 2016-05-22. [LW00211739]

26. *Iris ruthenica* Ker. Ait. [?]; *I. caespitosa* Pall.

in collibus inter frutices et ad margines sylvarum prope Hanebach p. Cibinium; April 1846; Dr Schur. [LW00211741]

27. *Iris Pseudo-Acorus* L.

Hermannstadt; Juli; Dr Schur. [LW00211740]

28. *Crocus vernus* Wulf.

Herb. Transsilv. Baumg.; [s.d.]; J.C.G. Baumgarten. [LW00211704]

29. *Crocus banaticus* Heuff.

in pratis alpinis alpium Rodnensium; Juni; Dr Schur. [LW00211705]

30. *Crocus banaticus* Heuff.; *C. Heuffelianus* (Herb.) Schur

in pratis montium Transsilvaniae in lucis subumrosis. März-Mai-Juni am Bullafall.; mitte Juni 1850; Dr Schur. [LW00211706]

31. *Crocus uniflorus* Schur [nom. superfl.]; *C. veluchensis* Herbert

in pratis montis Götzenberg bei Heltau; April 1846; Dr Schur. [LW00211707] (Fig. 2)

32. *Crocus veluchensis* Herbert; *Crocus uniflorus* Schur.

Flora Transsilvaniae in pratis subalpinis, in monte Arpas; Mai-Juni; Dr Schur. [LW00211708]

33. *Crocus uniflorus* Schur [nom. superfl.]; = *Crocus vernus* Bmg. *albiflorus* an *C. veluchensis*.

In mont gram. Transs. auf dem Götzenberg bei Heltau; 1 Mai 1847; Dr Schur. [LW00211709]

We assume, that some *C. uniflorus* specimens could have been used by Schur to designate the *C. banaticus* varietes described later in his Enumeratio Plantarum Transsilvaniae (SCHUR 1866).

34. *Crocus exiguus* Schur

In pratis mont. et in pomariis prope Coronam Transsilv.; Marz 1854; Dr Schur.

**Lectotypus.** *Crocus exiguus* Schur in Enum. pl. Transs.: 652, 1866: “Auf den Grasplätzen in den Obstgärten am Szokarak und um den Kapellenberg 2000' die Rasen fast bedeckend; Kalksubstrat bei Kronstadt. Febr. März.” (SCHUR 1866); designated by T. Fostiak 2016-05-22. [LW00211703]

35. *Crocus iridiflorus* Heuff.

in fructibus. Bei Kronstadt; Mai-Juni; Schur, J.P.F. [LW00211710A]

On the same herbarium sheet:

36. *Crocus iridiflorus* Heuff.; *Crociris speciosus* Schur, *Crocus speciosus* Baumg. (non M. B.).

in pratis sylvaticis prope Cibinium im Jungerwald, frequentissimus; Septbr.; Dr Schur. [LW00211710B]

T. FOSTIAK & L. TASENKEVICH



Figure 2. Herbarium sheet of *Crocus uniflorus* Schur.

Collection of F. Schur in Herbarium LW: Iridaceae



Figure 3. Herbarium sheet of *Gladiolus communis* L.

37. *Gladiolus communis* L.

Hermannstadt verwildert einzeln auf der Lazaretswiese; Juni 1847; Schur, J.P. F. [LW00211711] (Fig. 3)

38. *Gladiolus communis* L.

Kronstadt. Flor. Transsilv.; Juli 1854; Dr Schur. [LW00211712]

39. *Gladiolus imbricatus* L.

In pratis humidis uliginosis turfosisque. Hermannstadt auf vielen P[...]ten z. B. Narzissenwiesen im Jungerwald; Juni; Dr Schur. [LW00211713]

40. *Gladiolus galiciensis* Bess.; *G. tenuis* M. Bieb.

Siebenbürgen von Pavai mitgeteilt; [s.d.]; V. Pávai. [LW00211714]

41. *Gladiolus galiciensis* Bess.; *Gladiolus imbricatus* L.

Lazaretswiese bei Hermannstadt; Juli; Dr Schur. [LW00211715]

42. *Gladiolus Boucheanus* Schlechtend; *G. palustris* Gaud.

In pratis uliginosis Burzenland. Burzenwiese bei Kronstadt; Juni 1854; Dr Schur. [LW00211716]

In total, 42 specimens on 39 herbarium sheets of Iridaceae are deposited in Schur's collection in LW. Apart from Schur, four other collectors are also mentioned: V. Pávai, J.C.G. Baumgarten, G. Wolff, E.A. Bielz. Altogether, eight specimens are designated as type materials of various ranks.

## References

- KHMIL T. S., ZHUK O. O. & HONCHARENKO V. I. (2007): The collection of Prof. Dr Ferdinand Schur in the Herbarium of Ivan Franko National University of Lviv: Family Orchidaceae Juss. – *Wulfenia* **14**: 67–73.
- SPETA F. (1994): Leben und Werk von Ferdinand Schur. – *Stapfia* **32**: 1–334.
- SCHUR J. P. F. (1853): Sertum Florae Transsilvaniae. – *Verh. Mitth. Siebenbürg. Vereins Naturwiss. Hermannstadt* **1–4**: 1–103.
- SCHUR J. P. F. (1860): Zur Flora von Siebenbürgen V. – *Oesterr. Bot. Z.* **10**: 352–358.
- SCHUR J. P. F. (1866): Enumeratio plantarum Transsilvaniae: exhibens: stirpes phanerogamas sponte crescentes atque frequentius cultas, cryptogamas vasculares, charceas, etiam muscos hepaticasque. – *Vindobonae*: G. Braumüller.

Address of the authors:

Taras Fostiak  
Lydia Tassenkevich  
Herbarium LW  
Ivan Franko National University of Lviv  
4 Hrushevsky str.  
79005 Lviv  
Ukraine  
E-mail: digital.herblw@gmail.com



# ZOBODAT - [www.zobodat.at](http://www.zobodat.at)

Zoologisch-Botanische Datenbank/Zoological-Botanical Database

Digitale Literatur/Digital Literature

Zeitschrift/Journal: [Wulfenia](#)

Jahr/Year: 2018

Band/Volume: [25](#)

Autor(en)/Author(s): Fostiak Taras, Tassenkevich Lydia

Artikel/Article: [The collection of Dr Ferdinand Schur in the Herbarium of Ivan Franko National University of Lviv \[LW\]: Family Iridaceae Juss 209-216](#)