

**ARTICLES**

**The 2014 *Sierraperla* (Plecoptera: Peltoperlidae) Pacific Northwest U.S.A. Expedition**  
Bill P. Stark<sup>1</sup>, John B. Sandberg<sup>2</sup>, Boris C. Kondratieff<sup>3</sup>, Chris J. Verdone<sup>3</sup> and Audrey B. Harrison<sup>4</sup>

<sup>1</sup>Department of Biology, Box 4045, Mississippi College, Clinton, Mississippi, U.S.A. 39058  
E-mail: [stark@mc.edu](mailto:stark@mc.edu)

<sup>2</sup>California Department of Fish & Wildlife – A.B.L. and CSUC Research Foundation, California State University, Chico, California, U.S.A. 95929  
E-mail: [jsandberg@csuchico.edu](mailto:jsandberg@csuchico.edu)

<sup>3</sup>Department of Bioagricultural Sciences and Pest Management, Colorado State University, Fort Collins, Colorado, U.S.A. 80523  
E-mail: [boris.kondratieff@colostate.edu](mailto:boris.kondratieff@colostate.edu)  
E-mail: [verdonec@gmail.com](mailto:verdonec@gmail.com)

<sup>4</sup>Department of Biology, University of Mississippi, University, Mississippi, U.S.A. 38677  
E-mail: [audreybharrison@gmail.com](mailto:audreybharrison@gmail.com)

During 13-30 May 2014, we traveled to the Pacific Northwest to obtain additional material of the western Nearctic peltoperlid genus *Sierraperla* to confirm that two different taxa exist. Most of our collecting was focused in Oregon and northern California, U.S.A. Fifty-seven sites in 23 counties were collected in these states, and collections were made at two additional sites from two counties in Idaho and Utah (Table 1, Fig. 1). Most adults and nymphs of *Sierraperla* were specifically collected in 95% ethanol for DNA extractions. A paper was written describing a new species of *Sierraperla* based on male aedeagal characters, egg characters, and molecular evidence (Stark et al. 2015). Additionally, fresh material of *Osobenus yakimae* (Hoppe) allowed us to describe the distinctive epiproctal structures of this Pacific Northwest species (Sandberg et al. 2015) and specimens of the banded-wing phenotype of *Moselia infuscata* (Claassen) were collected for DNA barcode (Cytochrome c Oxidase subunit I [COI]) analysis (Gill et al. 2015).

Other stonefly species were either preserved in 70-95% ethanol or returned to Mississippi College, Colorado State University or Paradise, California for adult rearing. Most adults were collected by using beating sheets (DeWalt et al. 2014). The scanning electron micrograph was produced by a JEOL JSM-6500F Field Emission Scanning Electron Microscope (FESEM) at the Central Instrument Facility, Imaging Laboratory, Colorado State University, Fort Collins, Colorado (<http://cif.colostate.edu/imaging-laboratory/>).

A total of 3,059 stoneflies representing at least 91 species were collected (Table 2), and several of these were reared. Several of the known species are uncommon and others represented new species or new state records. *Salmoperla sylvanica* Baumann & Lauck, a rare perlodid species previously known from a few streams in northern California (Baumann & Lauck 1987, Nelson and Stark 1987, Stark and Baumann 2006) was reared from a stream in Jackson Co., Oregon, (Split Rock Creek, Wagner Gap Road, 12 mi S Talent, 42.09480°N, 122.77397°W) and specimens of an apparent new species of *Kathroperla* were also collected at the same site. Other

relatively uncommon Pacific Northwest species included two perlotid stoneflies, *Frisonia picticeps* (Hanson) and *Susulus venustus* (Jewett), and a significant range extension is reported for *Soliperla quadrispinula* (Jewett) from Meacham Creek, Umatilla Co., Oregon. This species is presently known from sites along the Coast Range of northern California to Clatsop and Benton counties in Oregon (Stark & Gustafson 2004). We also present a SEM image of the epiproct of *Alloperla delicata* Frison to illustrate the characteristic ellipsoidal dorsal aspect of the epiproct with the two anterolateral horns (Fig. 2). Lyon and Stark (1997) previously presented SEM images of the epiproct of this species; however the apex was obscured by the dense hair fringe of the epiproct and abdominal terga. In our images the distinctive epiproct tip of this species is more clearly illustrated.

## Literature Cited

- Baumann, R.W. and D.R. Lauck. 1987. *Salmoperla*, a new stonefly genus from northern California (Plecoptera: Perlodidae). Proceedings of the Entomological Society of Washington 89: 825-830.
- DeWalt, R. E., B. C. Kondratieff and J. B. Sandberg. 2014. Order Plecoptera. Pp. 933-949. In: Thorp, J. H. and D. C. Rogers (eds), Ecology and general Biology. Thorp and Covich's Freshwater. Invertebrate – Volume I. 4th edition. Academic Press. Elsevier Inc., Amsterdam, Netherlands. 1148 pp.
- Gill, B.A., B.C. Kondratieff, B.P. Stark and J.B. Sandberg. 2015. The banded-wing *Moselia infuscata* (Claassen) phenotype from California and Oregon, U.S.A. (Plecoptera: Leuctridae). Zootaxa 3911: 593-597.
- Lyon, M.L. & B.P. Stark. 1997. *Alloperla* (Plecoptera: Chloroperlidae) of western North America. Entomological News 108: 321-334.
- Nelson, C.R. & B.P. Stark. 1987. The *Salmoperla* safari: Hit and run stonefly collecting in Nevada and California. Perla 87: 7-11.
- Sandberg, J.B., B.C. Kondratieff and C. J. Verdone. 2015. Descriptions of the adult male and female genitalia of the genus *Osobenus* Ricker (Plecoptera: Perlodidae). Illiesia 11: 1-7.
- Stark, B.P. & R.W. Baumann. 2006. The female and egg of *Salmoperla sylvanica* (Plecoptera: Perlodidae). Illiesia 2: 24-26.
- Stark, B.P. and D.L. Gustafson. 2004. New species and records of *Soliperla* Ricker, 1952 from western North America (Insecta, Plecoptera, Peltoperlidae). Spixiana 27:97-105.
- Stark, B.P., B.C. Kondratieff, J.B. Sandberg, B.A. Gill, C.J. Verdone and A.B. Harrison. 2015. *Sierraperla* Jewett, 1954, (Plecoptera: Peltoperlidae), distribution, egg morphology and description of a new species. Illiesia 11: 8-22.

**Table 1. 2014 Sierraperla Expedition. \* indicates multiple visits.**

State	County	#	Waterbody	Location	Date
OR	Jackson	1	Union Creek	Falls (mapped), 0.6 mi S Hwy 62	5/16
		2	Trib of Union Cr.	1000 Springs Rd 3 mi SE Hwy 62	5/16
	Douglas	3	Clearwater River	Clearwater Falls CG, Hwy 138	5/16
		4	Watson Creek	Watson Falls NFD37RD & Hwy 138	5/16
	Union	5	Grande Ronde River	Birdtrack Springs CG	5/16
		6	Grande Ronde River	Hilgard Jct, Hwy 244	5/16*
	Clatsop	7	Fishhawk Creek	Nr Jewel, Fishhawk Falls Hwy	5/17
	Clackamas	8	Still Creek	Near Still Creek CG	5/17*
	Linn	9	North Santiam River	Hwy 22, 0.5 mi W Bruno Mtn. Rd.	5/18
		10	Seeps on Willis Creek	NFD 2255	5/18

		11	Marion Creek	Hwy 22	5/18
	Benton	12	Alder Creek	Hwy 30 Alder Creek Falls Marys Pk	5/19
		13	Unknown stream	Mary's Peak, 2 mi W Hwy 30	5/19
		14	Thornton Creek	Thornton Creek Rd	5/19
UT	Summit		Weber River	I-84 Exit 112, Fish Access	5/19
ID	Twin Falls		4th Fork Rock Creek	Rock Creek Rd, 1/4 mi S of 5th fork	5/19
	Malheur	15	Snake River (Hwy 201)	Ontario State Rec Site	5/19
	Multnomah	16	Wahkeena Spring	Hwy 84, 20 mi E Troutdale	5/18
		17	Wahkeena Creek	Wahkeena Falls, Hwy 30	5/20
	Clackamas	18	Salmon River	Salmon River Rd	5/20
	Umatilla	19	Meacham Creek	Off Exit 238 I-84	5/20
OR	Josephine	20	Rogue River	Grants Pass, Riverside Park	5/21
		21	Cave Creek	Grayback CG, Hwy 46	5/21
		22	Spring Trib of Lake Cr.	NFD-070 Foot Trail	5/21
		23	Lake Creek	NFD-070 Foot Trail	5/21
		24	West Fork Illinois R.	Illinois Forks State Park	5/21
	Jackson	25	Wagner Creek	Wagner Creek Rd, 5 mi S Talent	5/22
		26	Basin Creek	Wagner Creek Rd, 5.9 mi S Talent	5/22
		27	Sheep Creek	NFD-22-RD, 10.5 mi S Talent	5/22
		28	Corral Creek	NFD-22-RD, 10.7 mi S Talent	5/22
		29	Jim Creek	NFD-22-RD, 11.1 mi S Talent	5/22
		30	Split Rock Creek	NFD-22-RD, 12.4 mi S Talent	5/22
		31	Beaver Dam Creek	Daley Cr CG nr Deadwood Junction	5/22
32		McDonald Creek	NFD-22 Rd	5/22	
CA	Siskiyou	33	Big Springs Creek	Mt Shasta City Park	5/23
		34	Black Butte Spring Cr.	Black Butte	5/23*
		35	McCloud River	Lower Falls Pic Area Hwy 89	5/23
	Modoc	36	SF Davis Creek	Plum Valley CG, 3.5 mi E Davis Cr	5/23
		37	NF Pit River	Lowhead dam, 0.8 mi N Surprise Sta.	5/23
	38	Thoms Creek	Cedar Pass CG, 15 mi E Alturas	5/23	
OR	Harney	39	Trout Creek	Whitehorse Ranch Rd 18 mi S Fields	5/24
	Nevada	40	Rock Creek	N Bloomfield Rd, 4.2 mi N NV City	5/24
		41	Spring Trib South Yuba R	N Bloomfield Rd, Edwards Crossing	5/24
		42	Patrick Creek	Patrick Creek Rd (1st Bridge)	5/24
	Del Norte	43	Small Falls into Patrick Cr	Patrick Creek Rd	5/24
		44	Sml Falls above Shelly Cr	Patrick Creek Rd	5/24
CA	Humboldt	45	Prairie Creek	Prairie Cr Redwoods SP, Drury Pkw.	5/25
		46	Freshwater Creek	Freshwater Pool Park	5/25
		47	Ruby Creek	Hwy 299	5/25
		48	Sml Waterfall	Hwy 299 above Boise Creek CG	5/25
	Trinity	49	Sml Stream	Burnt Ranch Hwy 299 NFCG	5/25
	Butte	50	Butte Creek	Humboldt Rd E Butte Meadows 1	5/25
		51	Butte Creek	Humboldt Rd E Butte Meadows 2	5/25
			Butte Creek	Humboldt Rd E Butte Meadows 3	5/25
Tehama	52	Deer Creek	Hwy 32, below Potato Patch CG	5/25	
	53	Morgan Creek	Hwy A6	5/26	
	54	Deer Creek	Hwy 32 Elam Picnic Area	5/26	
	Plumas	55	Domingo Springs	Old Red Bluff Rd	5/26
	Sierra	56	Big Spring	Hwy 49 near Bassetts	5/26

**Table 2. 2014 *Sierraperla* Expedition taxa list.** N\* indicates nymph and exuviae.

	CAPNIIDAE		<i>A. fraterna</i>	36♂	29♀	
<i>Capnia glabra</i>	4♂	33♀	<i>Alloperla</i> sp.		11♀	
<i>C. gracilaria</i>	3♂	5♀	<i>Kathroperla perdita</i>	2♂	2♀	1E
<i>C. melia</i>	28♂	37♀	<i>Kathroperla</i> n.sp	1♂	3♀	
<i>C. sextubercata</i>	3♂	15♀	<i>Paraperla frontalis</i>	1♂	4♀	1E
<i>Capnia</i> sp.		10♀	<i>Suwallia</i> sp.		1♀	
<i>Eucapnopsis brevicauda</i>	14♂	51♀	<i>Sweltsa borealis</i> gr	49♂	62♀	
<i>Paracapnia</i> sp.		1♀	<i>S. coloradensis</i>	27♂	18♀	
	CHLOROPERLIDAE		<i>S. fidelis</i>	21♂	8♀	1N
<i>Alloperla chandleri</i>	8♂		<i>S. oregonensis</i>	2♂		
<i>A. delicata</i>	22♂	9♀	<i>S. pacifica</i>	23♂	16♀	

<i>S. salix</i>	34♂	38♀	
<i>Sweltsa</i> sp.	1♂	3♀	7N
<i>S. townesi</i>	73♂	46♀	
<i>S. umbonata</i>	21♂	40♀	
<i>Triznaka pintada</i>	10♂	7♀	
<i>T. signata</i>	2♂		
<b>LEUCTRIDAE</b>			
<i>Megaleuctra complicata</i>	3♂	5♀	
<i>Megaleuctra kincaidi</i>	2♂	2♀	1N
<i>Moselia infuscata</i>	167♂	120♀	
<i>Paraleuctra forcipata</i>	28♂	45♀	
<i>P. occidentalis</i>	15♂	27♀	
<i>P. vershina</i>	138♂	139♀	
<i>Perlomyia collaris</i>		4♀	
<i>Pomoleuctra andersoni</i>	1♂		
<b>NEMOURIDAE</b>			
<i>Malenka bifurcata</i>	2♂	1♀	
<i>M. cornuta</i>	22♂	13♀	
<i>M. depressa</i>	22♂	15♀	
<i>Malenka</i> n. sp.	1♂		
<i>Malenka</i> sp.	1♂	2♀	8N
<i>Nanonemura waukeena</i>	4♂	4♀	
<i>Nemoura spiniloba</i>		1♀	
<i>Podmosta delicatula</i>	16♂	24♀	
<i>Prostoia besametsa</i>		1♀	
<i>Soyedina interrupta</i>	7♂	3♀	1N
<i>S. nevadensis</i>	4♂	3♀	
<i>S. producta</i>	84♂	43♀	1N
<i>Soyedina</i> sp.		4♀	
<i>Visoka cataractae</i>		7♀	
<i>Zapada cinctipes</i>	2♂	11♀	
<i>Z. columbiana</i>		1♀	
<i>Z. frigida</i>	13♂	6♀	
<i>Z. oregonensis</i>	25♂	34♀	6N
<b>PELTOPERLIDAE</b>			
<i>Sierraperla cora</i>	14♂	4♀	78N
<i>S. tolowa</i>	3♂		46N
<i>Soliperla campanula</i>	13♂	6♀	
<i>S. quadrispinula</i>	1♂	1♀	13N
<i>S. sierra</i>	2♂		5N
<i>Soliperla</i> sp.	1♂		2N
<i>Yoraperla mariana</i>	16♂	32♀	
<i>Y. nigrisoma</i>	58♂	68♀	9N
<i>Y. siletz</i>	3♂	2♀	
<i>Yoraperla</i> sp.		1♀	7N
<b>PERLIDAE</b>			
<i>Calineuria californica</i>	23♂	14♀	14N
<i>Doroneuria baumanni</i>	1♂		8N
<i>Hesperoperla pacifica</i>	4♂	2♀	4N
<b>PERLODIDAE</b>			
<i>Calliperla luctuosa</i>		2♀	2E
<i>Cascadoperla trictura</i>	2♂	2♀	
<i>Chernokrilus misnomus</i>			6N
<i>Cultus</i> sp.	2♂		4E
<i>C. tostonus</i>	6♂		
<i>Diura knowltoni</i>	4♂	2♀	
<i>Frisonia picticeps</i>		29♀	
<i>Isoperla bifurcata</i>	13♂	1♀	64N
<i>I. fulva</i>	39♂	17♀	6N*
<i>I. marmorata</i>	3♂	10♀	
<i>I. mormona</i>	6♂	3♀	10N
<i>I. phalerata</i>	1♂	1♀	9N
<i>I. quinquepunctata</i>	21♂	16♀	
<i>I. roguensis</i>		1♀	
<i>I. sobria</i>	1♂	6♀	3N
<i>Isoperla</i> sp.		6♀	7N

<i>I. tilasqua</i>	5♂	3♀	
<i>I. umpqua</i>	1♂		
<i>Kogotus nonus</i>	12♂	8♀	
<i>Kogotus/Rickera</i> sp.			4E
<i>Megarcys subtruncta</i>	3♂	12♀	2E
<i>Osobenus yakimae</i>	14♂	20♀	2N
<i>Rickera sorpta</i>	9♂	11♀	
<i>Salmoperla sylvanica</i>	2♂	1♀	
<i>Setvena waukeena</i>			1N
<i>Skwala curvata</i>		1♀	
<i>Skwala</i> sp.			8E
<i>Susulus venustus</i>	6♂	13♀	2N
<b>PTERONARCYIDAE</b>			
<i>Pteronarcella badia</i>			2N
<i>Pteronarcella regularis</i>			1N
<i>Pteronarcys californica</i>		2♀	2N
<i>P. princeps</i>	10♂	6♀	7N
<b>TAENIOPTERYGIDAE</b>			
<i>Taenionema kincaidi</i>	10♂	16♀	
<i>T. pacificum</i>	3♂	3♀	
<i>T. pallidum</i>	51♂	103♀	
<i>T. raynorium</i>	1♂	1♀	

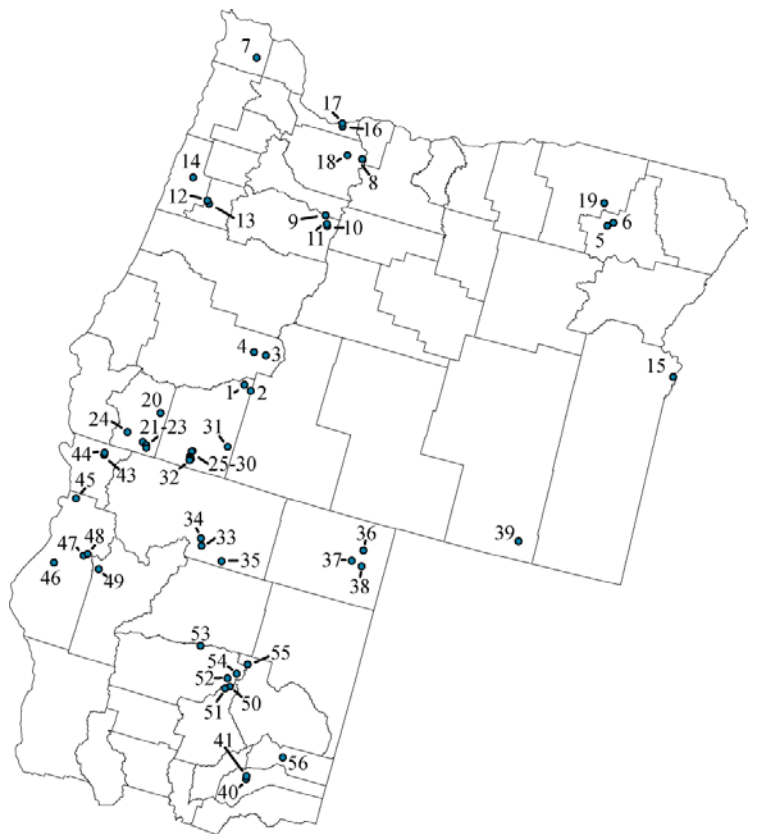


Figure 1. May 2014 *Sierraperla* Expedition site map.

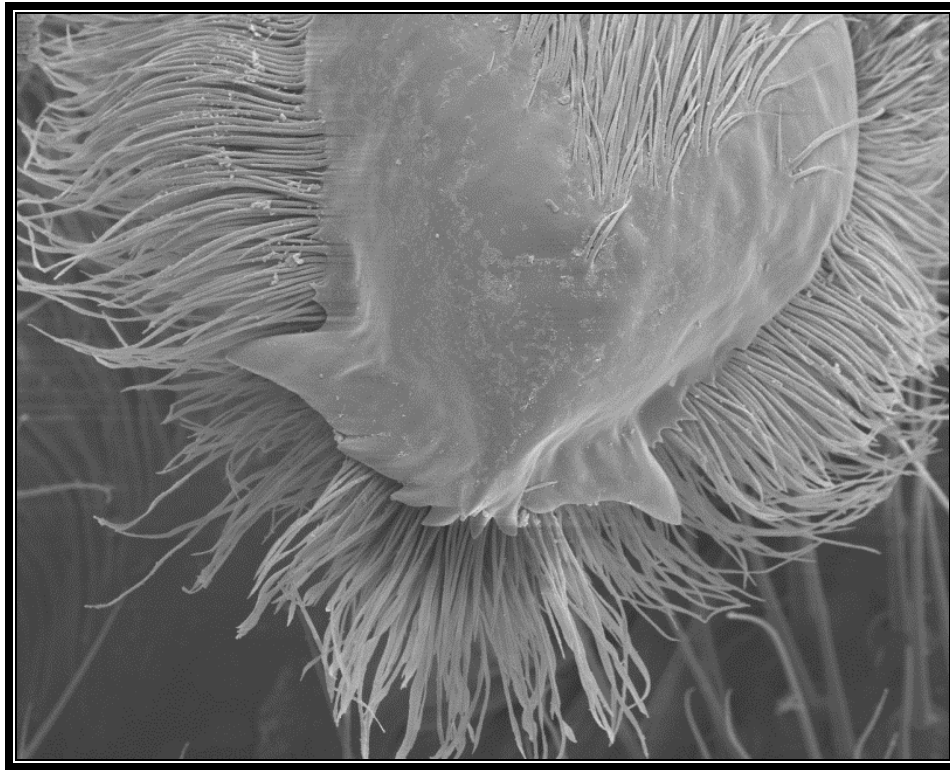


Figure 2. SEM of the epiproct of *Alloperla delicata*, Nevada Co., California, Rock Creek, 24 May 2014.

-----

### **Do Upper Great Lakes National Parks Protect Stoneflies, Mayflies, and Caddisflies Better Than Surrounding Areas?**

R. Edward DeWalt, Eric J. South, and Jason L. Robinson

University of Illinois, Prairie Research Institute, Illinois Natural History Survey, 1816 S Oak St. Champaign, IL 61820, 217-649-7414, [dewalt@illinois.edu](mailto:dewalt@illinois.edu)

Over the past two years we have been sampling streams, lakes, and marshes in six upper Great Lakes national park units: Sleeping Bear Dunes National Lake Shore (Michigan), Indiana Dunes NLS (Indiana), Pictured Rock NLS (Michigan), Isle Royale National Park (Michigan), Voyageurs NP (Minnesota), and St. Croix & Namekagon National Scenic Waterway (Minnesota & Wisconsin). National parks were designed to protect the flora and fauna living within their boundaries and should protect sensitive species at a greater rate than found in the region species pool. The problem is how to define that region species pool. Some have used state checklists as a species pool, but this is too coarse and in some cases a park unit might have very different habitat from that across an entire state. We draw on two sources for regional species pool data: predicted pre-European settlement distributions for 427 Midwestern, USA EPT species and a

# ZOBODAT - [www.zobodat.at](http://www.zobodat.at)

Zoologisch-Botanische Datenbank/Zoological-Botanical Database

Digitale Literatur/Digital Literature

Zeitschrift/Journal: [Perla](#)

Jahr/Year: 2015

Band/Volume: [33](#)

Autor(en)/Author(s): Stark Bill P., Sandberg John B., Kondratieff Boris C., Verdone Chris J., Harrison Audrey B.

Artikel/Article: [The 2014 Sierraperla \(Plecoptera: Peltoperlidae\) Pacific Northwest U.S.A. Expedition 18-22](#)