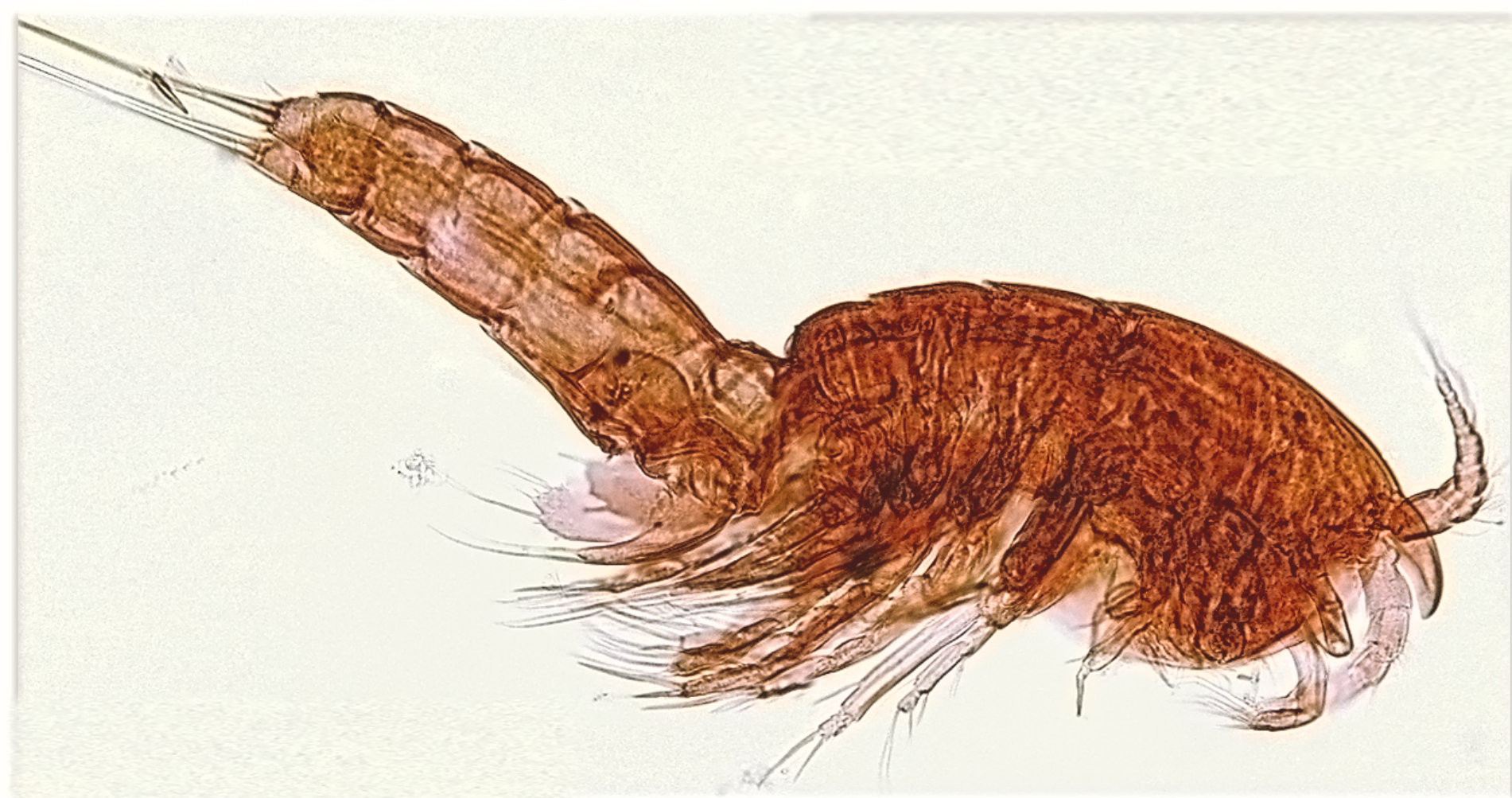


Miraciidae:
Amonardia perturbata Lang, 1965



Lateral view – Adult Female

ADULT MALE



Lateral



Dorsal

Amonardia perturbata Lang, 1965

A species that is easily confused with several other miraciids that also occur along the British Columbia coast. Important Identifying characteristics include the unique basis of the first thoracic leg, with its accessory knob, and the armature of the fourth thoracic leg (P-4) exopodite.

With its chunky body and strong maxillipeds, the life style of the species could be compared with that of a worker ant. The first thoracic legs, with strong setae on the exopodite and two terminal predatory setae on the endopodite, provide a means of scraping food (e.g., diatoms) off eelgrass and algae. Although body shape and nature of thoracic legs suggest the potential for swimming, and dispersal, movement over the food source (eelgrass & macro algae) would appear more important than swimming expeditions to new food sources.

In British Columbia, *Amonardia perturbata* has so far been found associated with eelgrass in the Bamfield area and in Haida Gwaii.

00 N L1
Length : 338.8 um

ROSTRUM-LATERAL

FEMALE

170.8 um

Egg sacs-
Ventral
view

00 N L1
Length : 374.0 um

ROSTRUM-DORSAL

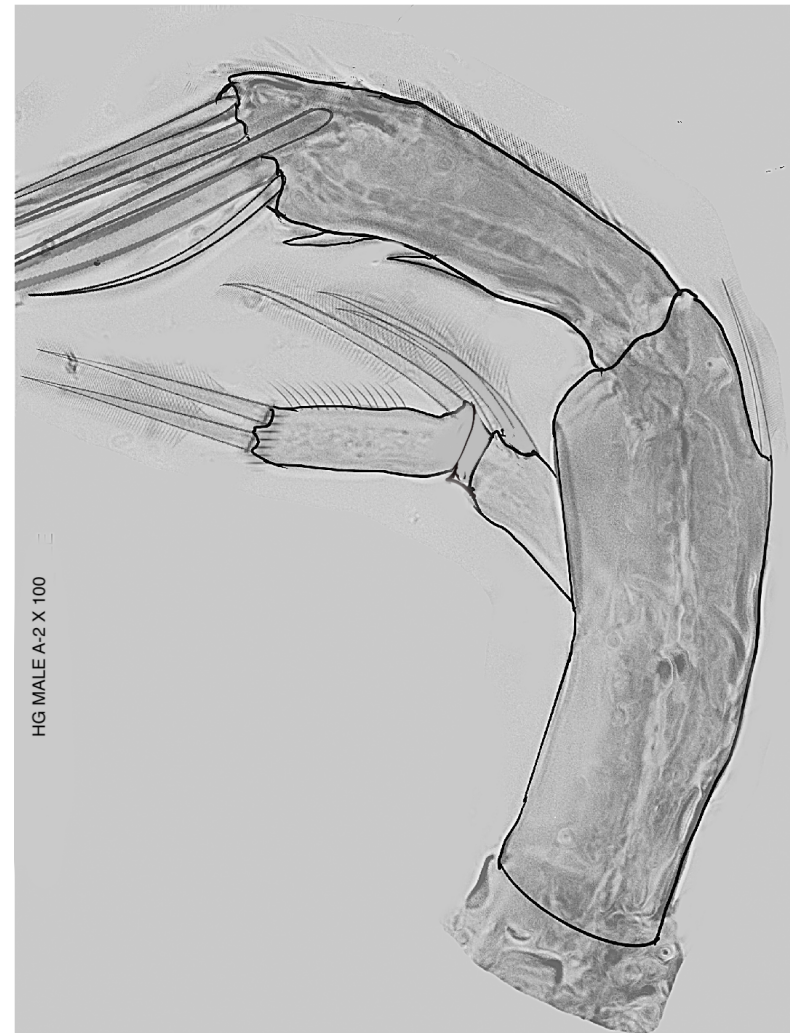


FEMALE: ROSTRUM & A-1 – LATERAL VIEW

MALE ROSTRUM (DORSAL VIEW)

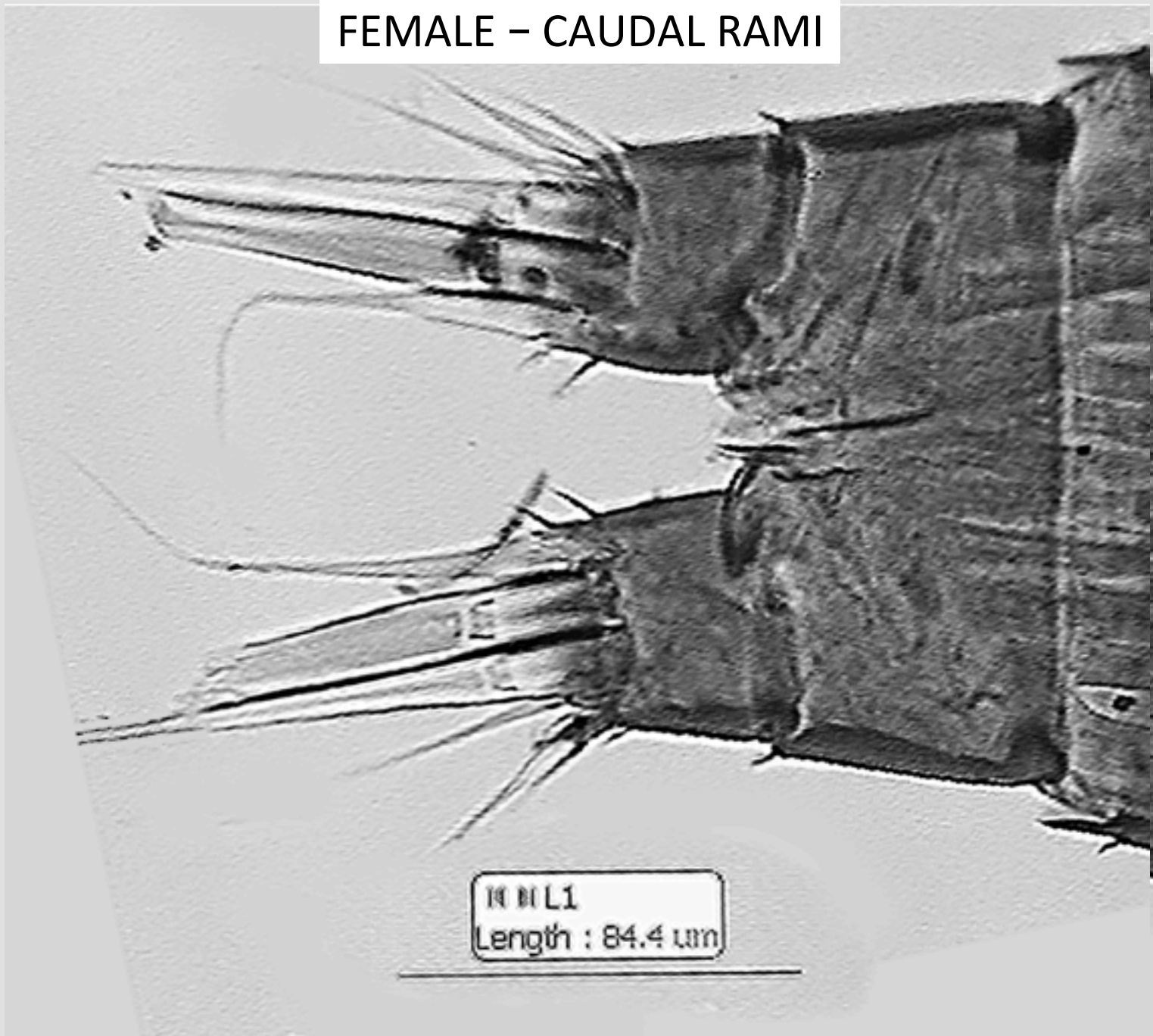


ADULT MALE
A-2 & EXOPODITE



HG MALE A-2 X 100

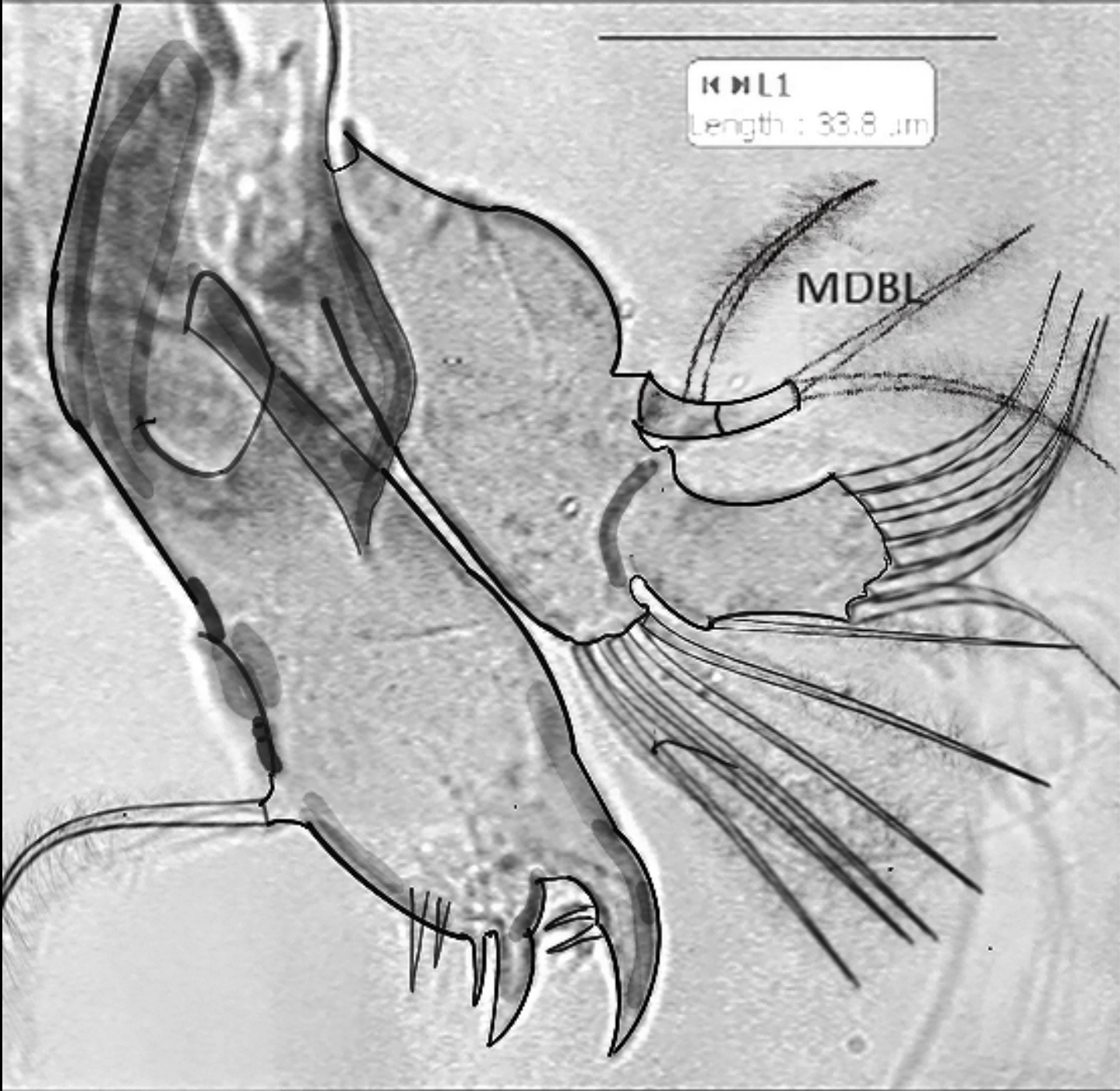
FEMALE – CAUDAL RAMI



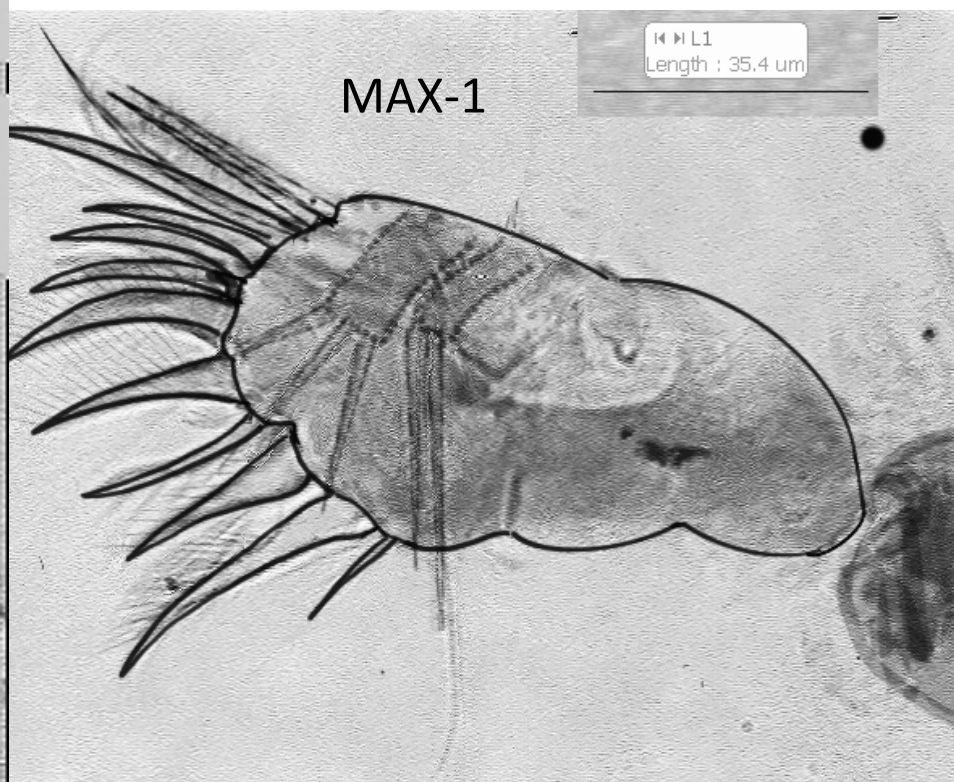
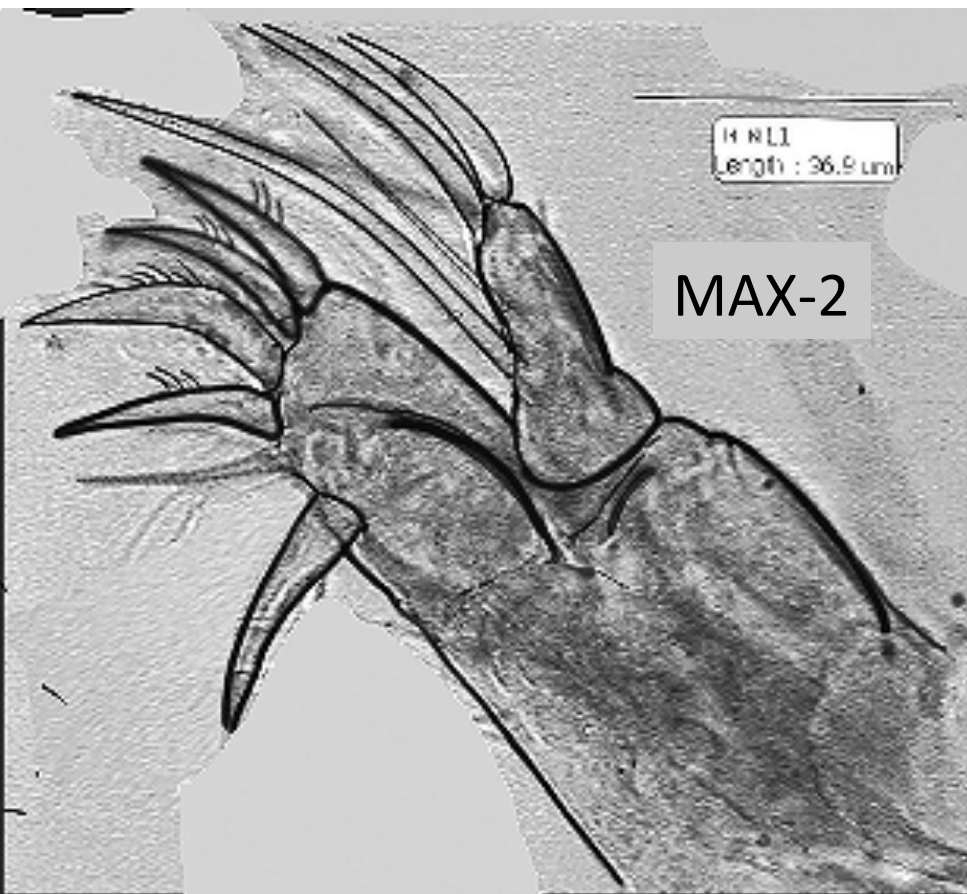
KML1

Length : 33.8 μ m

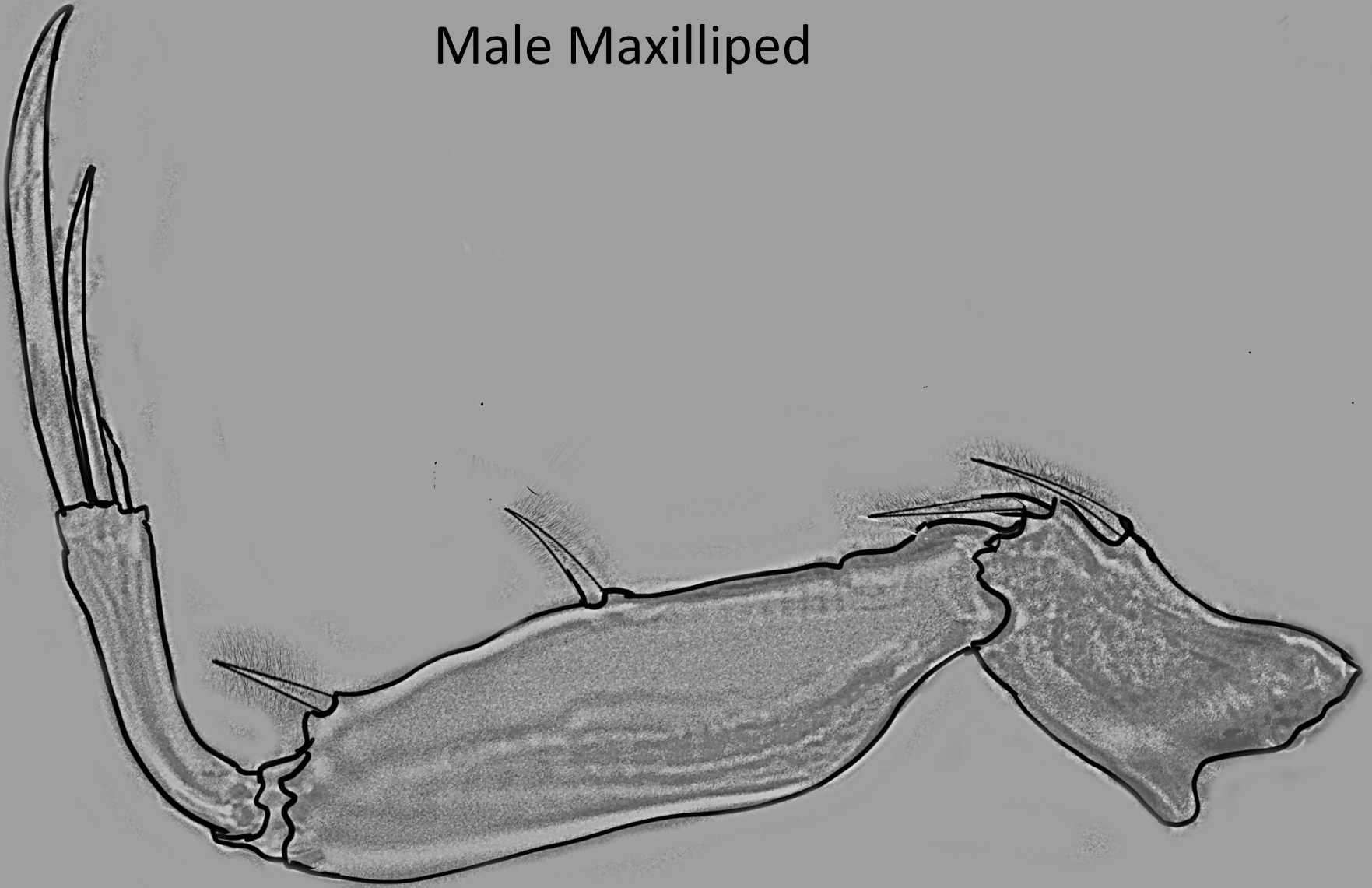
MDBL



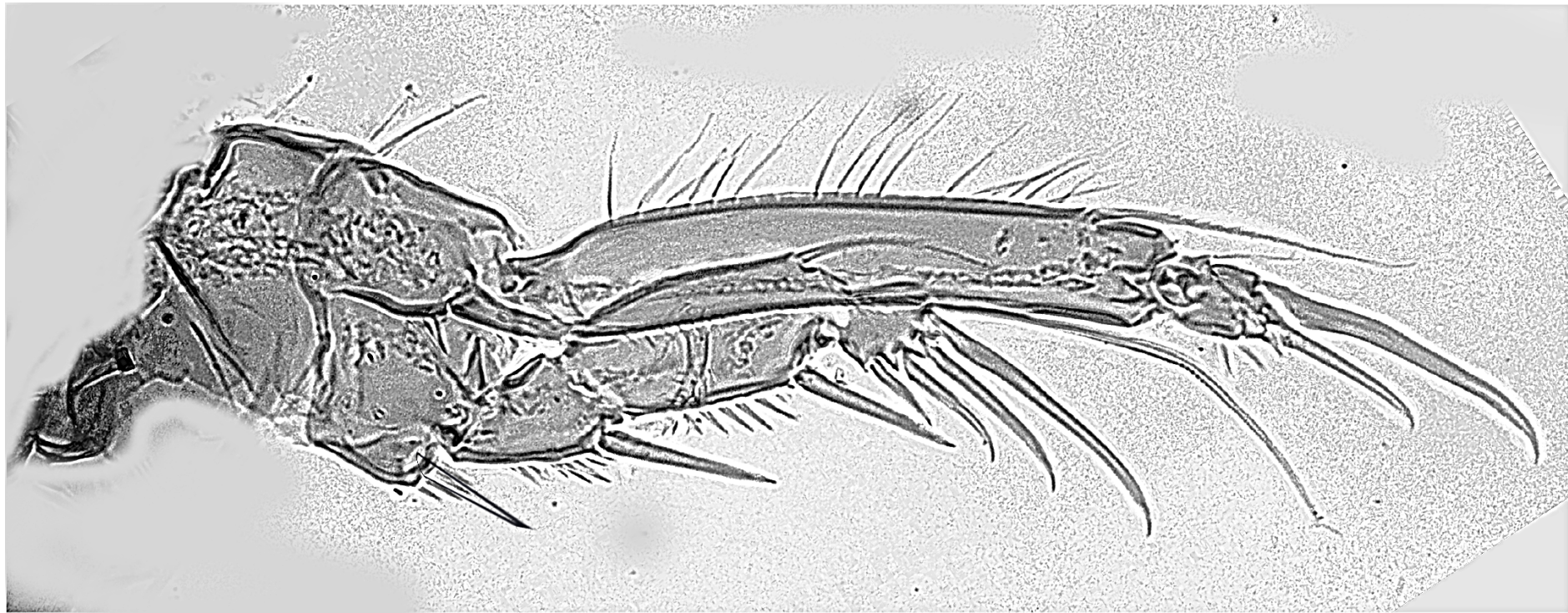
This is a grayscale micrograph of a biological specimen, likely a larva, with several line drawings overlaid to illustrate its morphology. The drawings include a large, curved structure on the left, a segmented structure on the right labeled 'MDBL', and a series of long, thin, curved structures at the bottom. A scale bar in the top right corner indicates a length of 33.8 μ m.



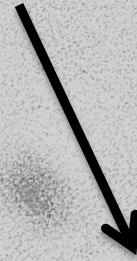
Male Maxilliped



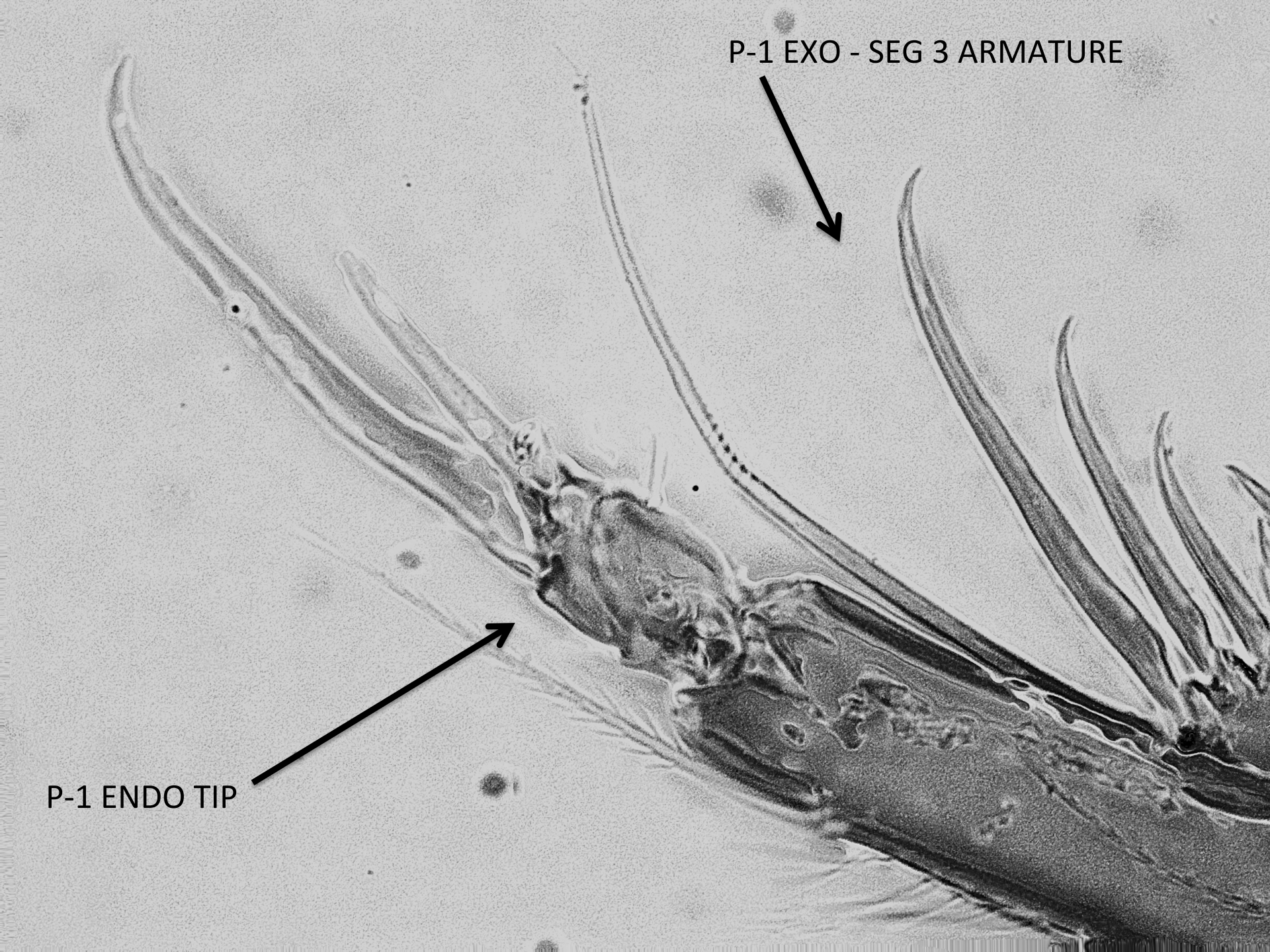
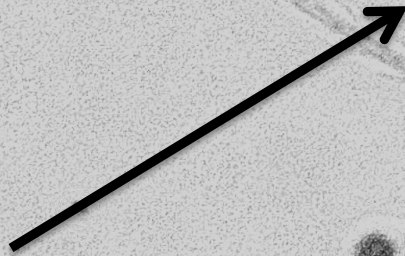
P-1

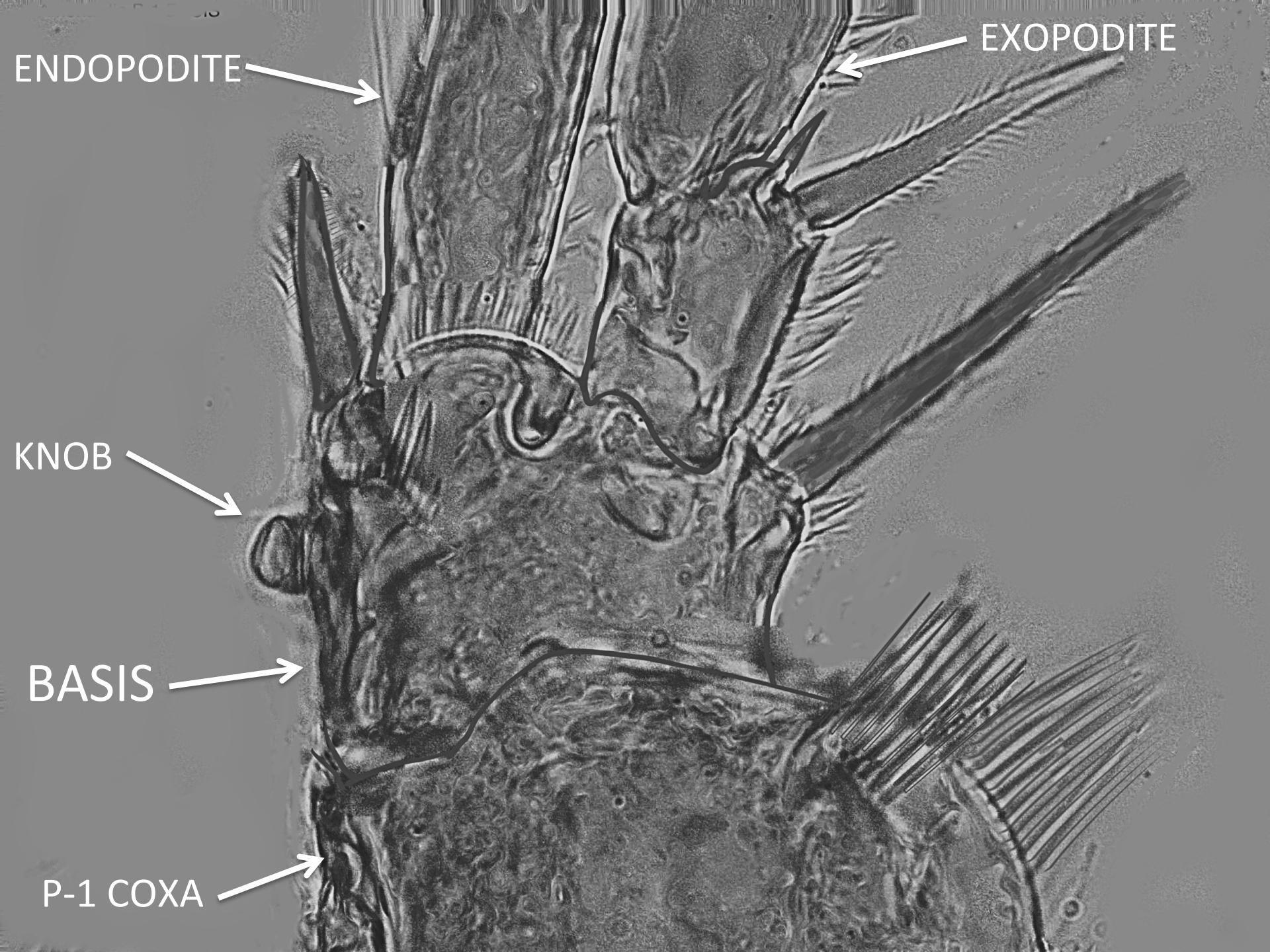


P-1 EXO - SEG 3 ARMATURE



P-1 ENDO TIP





ENDOPODITE

EXOPODITE

KNOB

BASIS

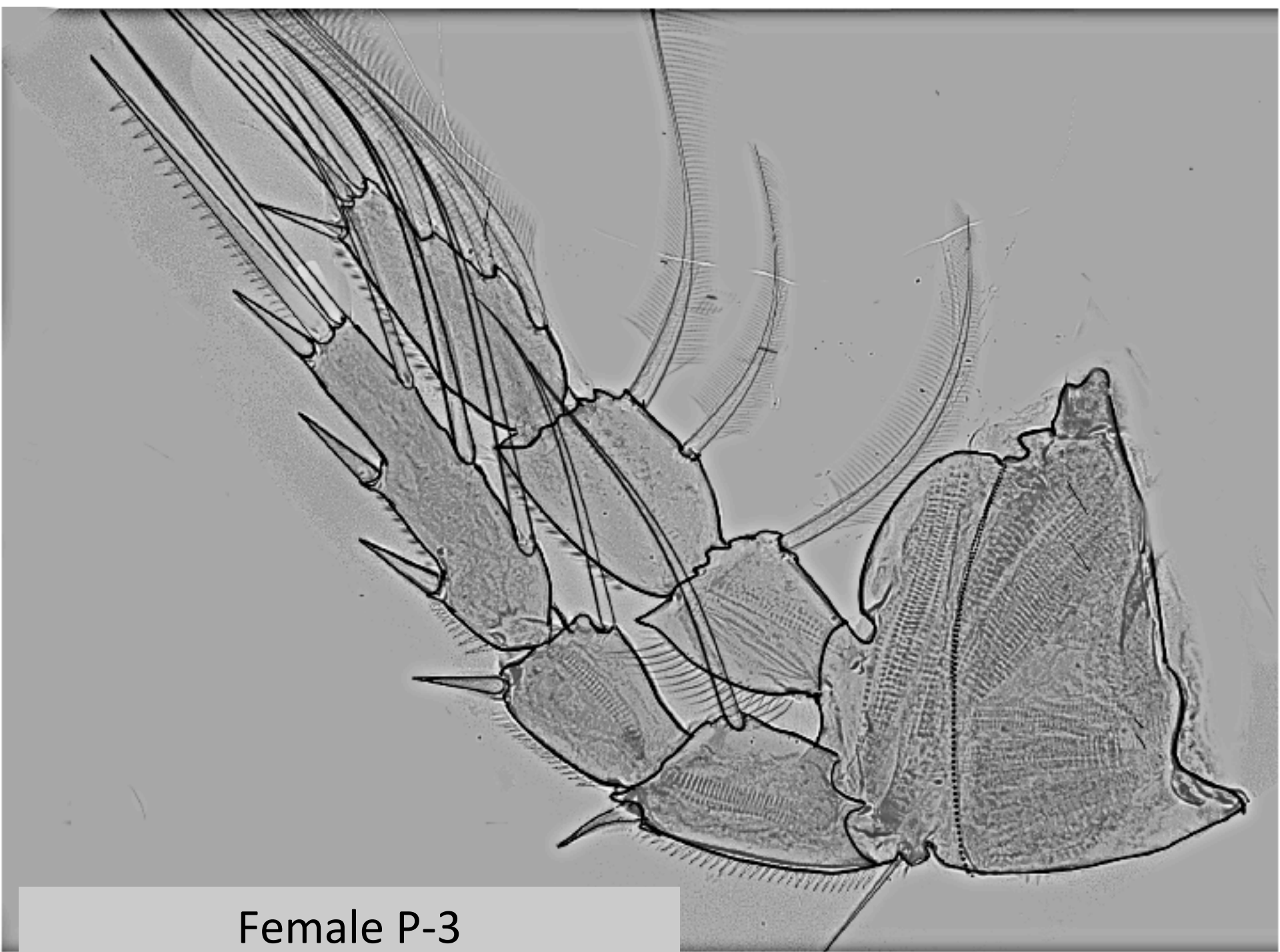
P-1 COXA

Female P-2



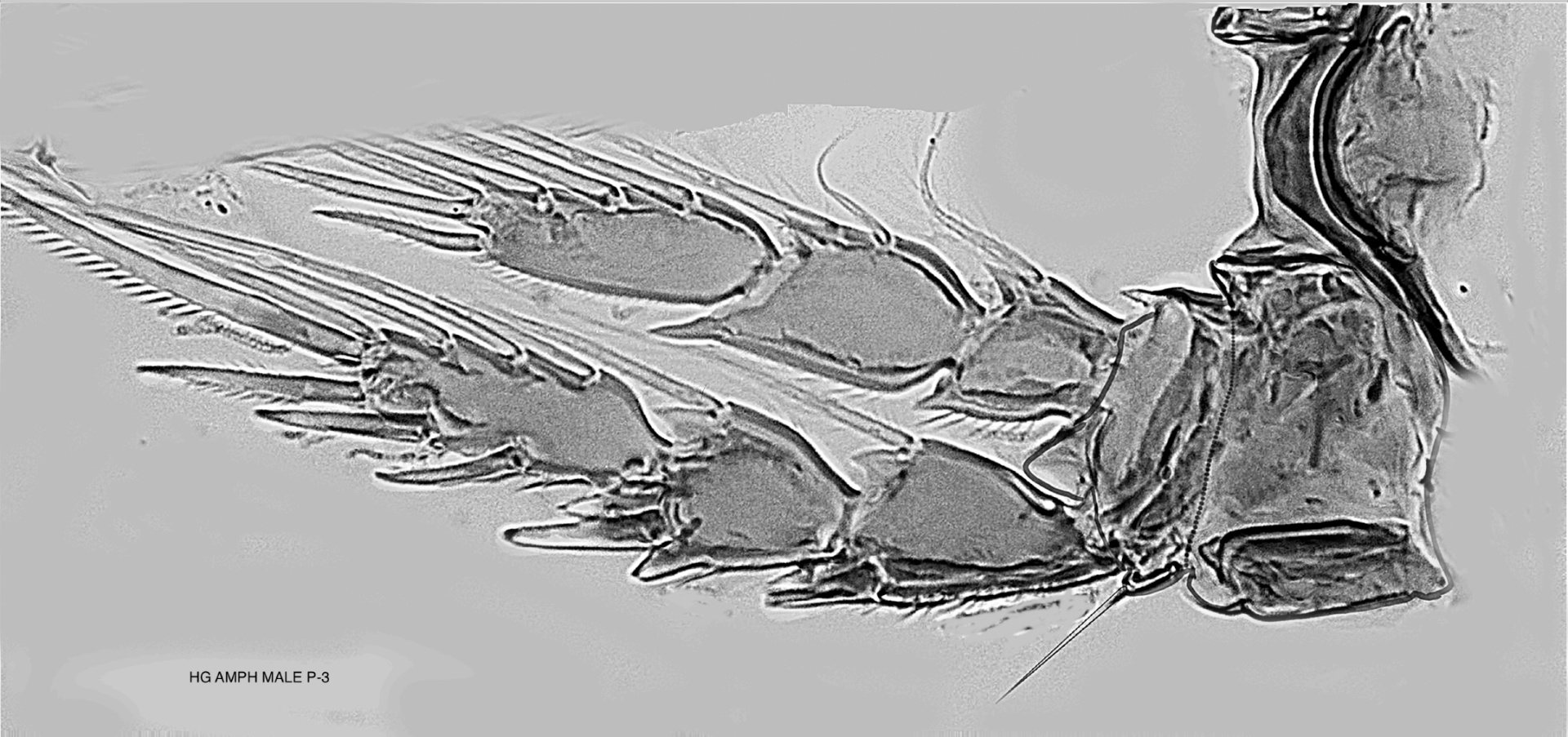


Male P-2



Female P-3

Male P-3



HG AMPH MALE P-3

GRAPPLER-AMONARDIA P-4

P-4

FEMALE

AMONARDIA P-4

MALE

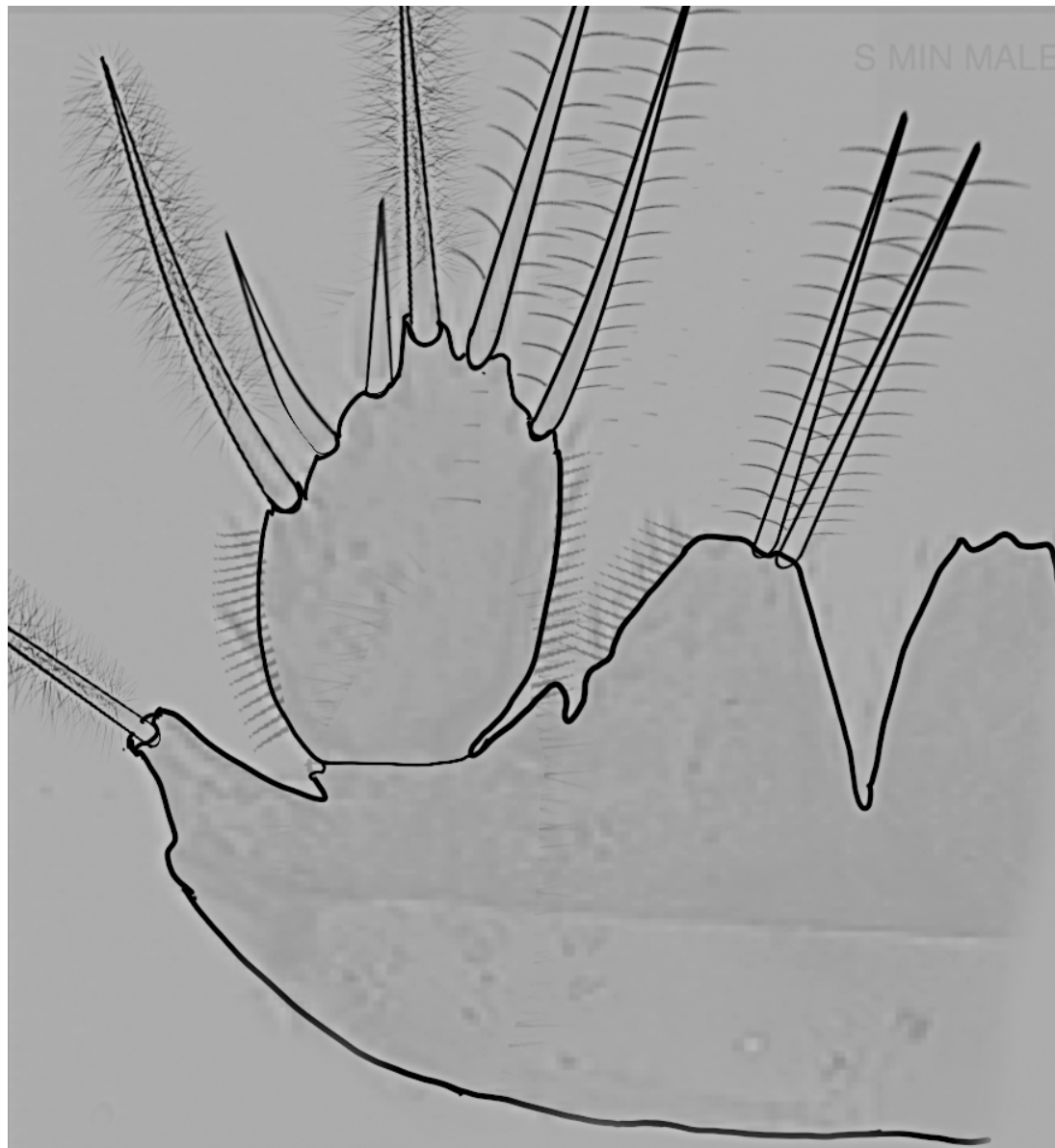
◀ ▶ L1

Length : 75.0 um

Female P-5



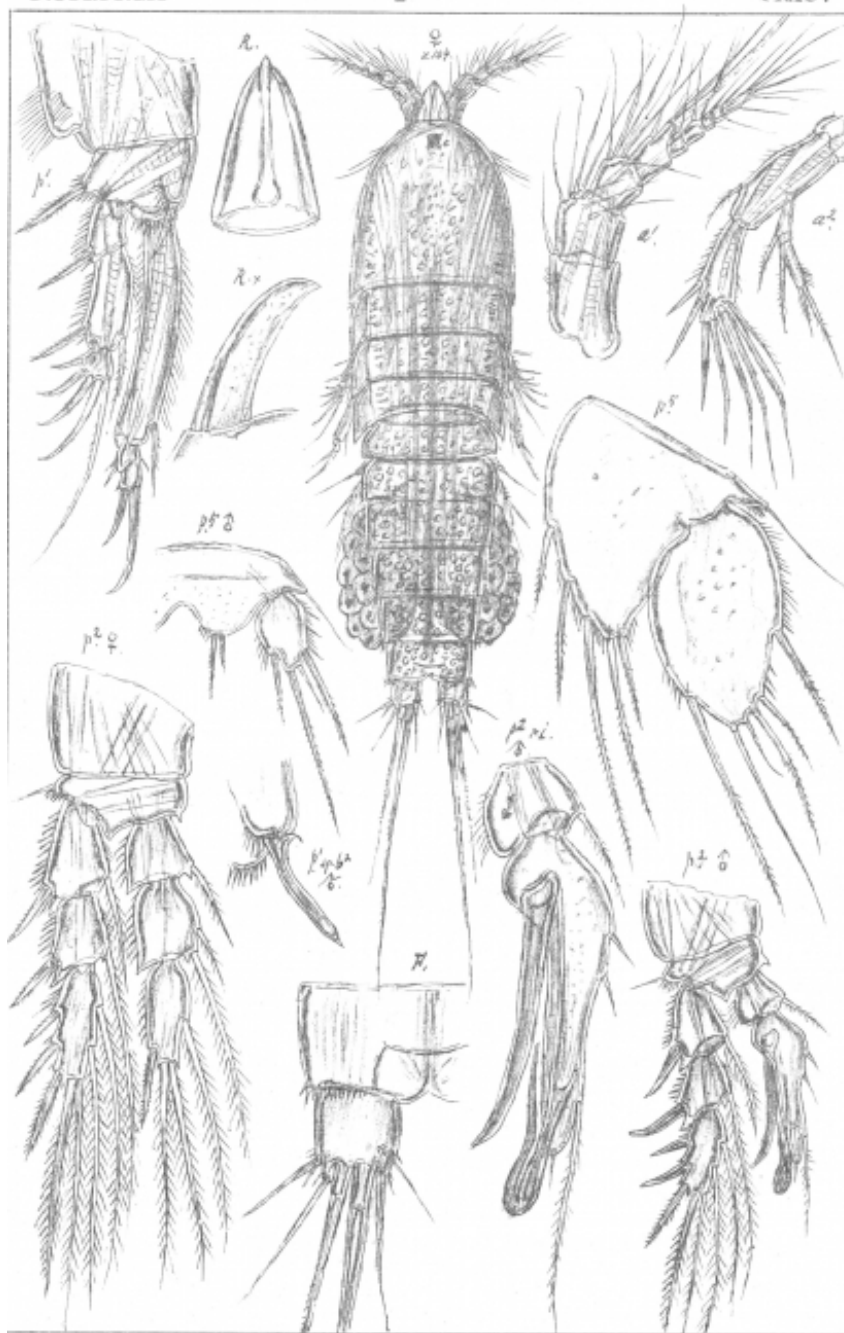
S MIN MALE P-5



Male P-5

P2 TO P4 ARMATURE

Amonardia perturbata Lang, 1965																						
P2								P3								P4						
EXP.				ENP.				EXP.				ENP.				EXP.				ENP.		
1	2	3		1	2	3		1	2	3		1	2	3		1	2	3		1	2	3
1	1	2.2.3		1	2	1.2.1		1	1	3.2.3		1	2	3.2.1		1	1	3.2.2 (2.2.3)		1	1	2.2.1

**A SIMILAR SPECIES**

Amphiascus nasutus from Sars, G.O. 1906

Description Plate 95

JPG file - 975.79 kB - 1 692 x 2 833 pixels

added on 2014-01-24

68 views

WoRMS taxa

[Amphiascus nasutus Sars G.O., 1906 accepted as *Amphiascopsis nasutus* \(Sars G.O., 1906\) accepted as *Amonardia arctica* \(Scott T., 1899\)checked Walter, T. Chad 2014-01-24](#)

This work is licensed under a Creative Commons

[Attribution-Noncommercial-Share Alike 4.0 License](#)