

Tisbidae > *Scutellidium* sp.



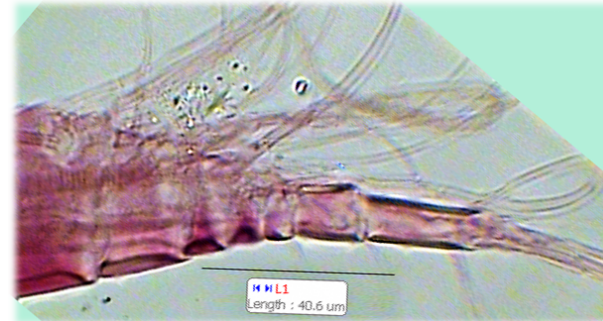
DORSAL
VIEW

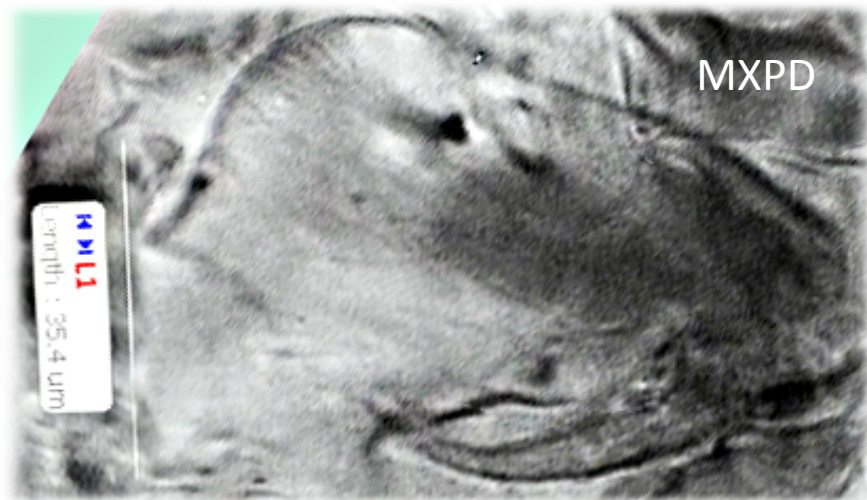
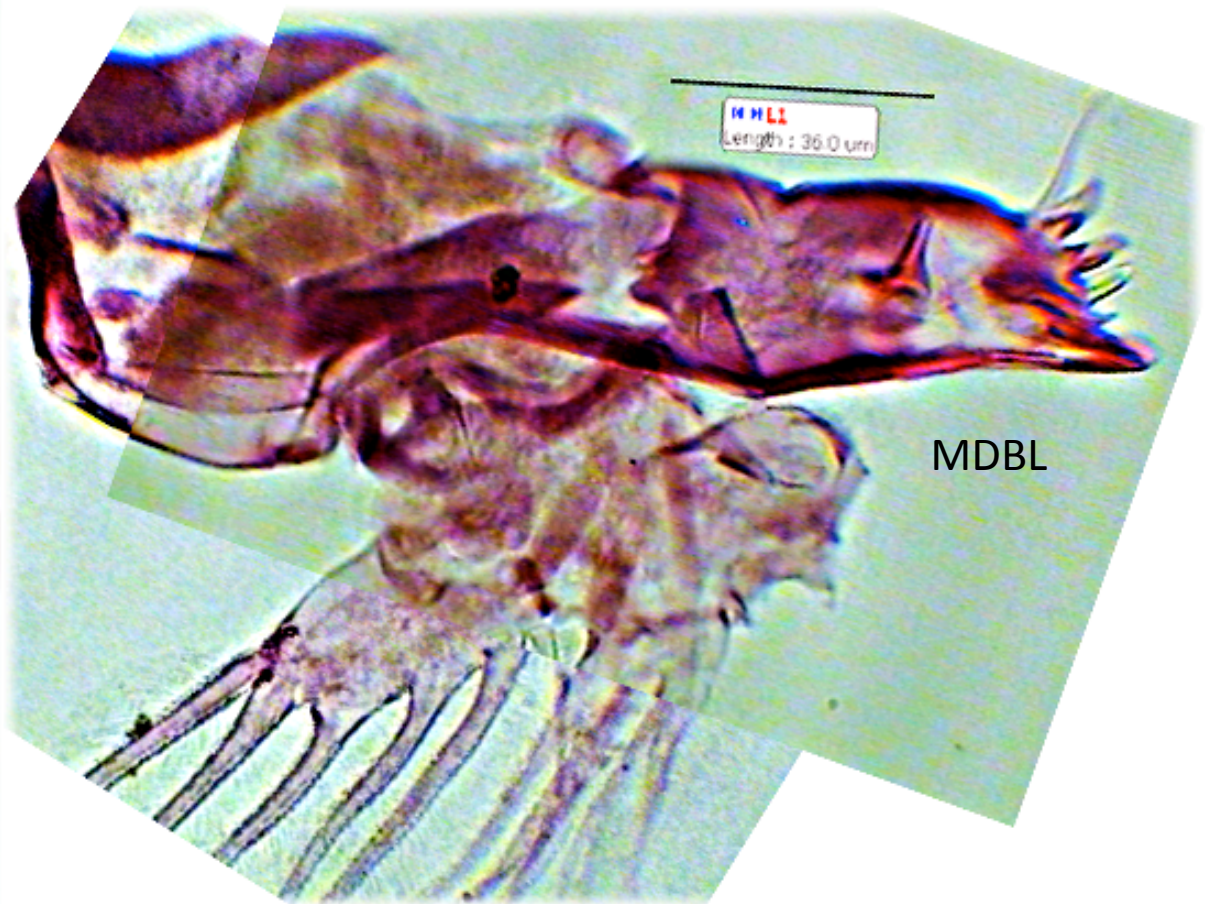


CROSS-SECTION,
VENTRAL
VIEW

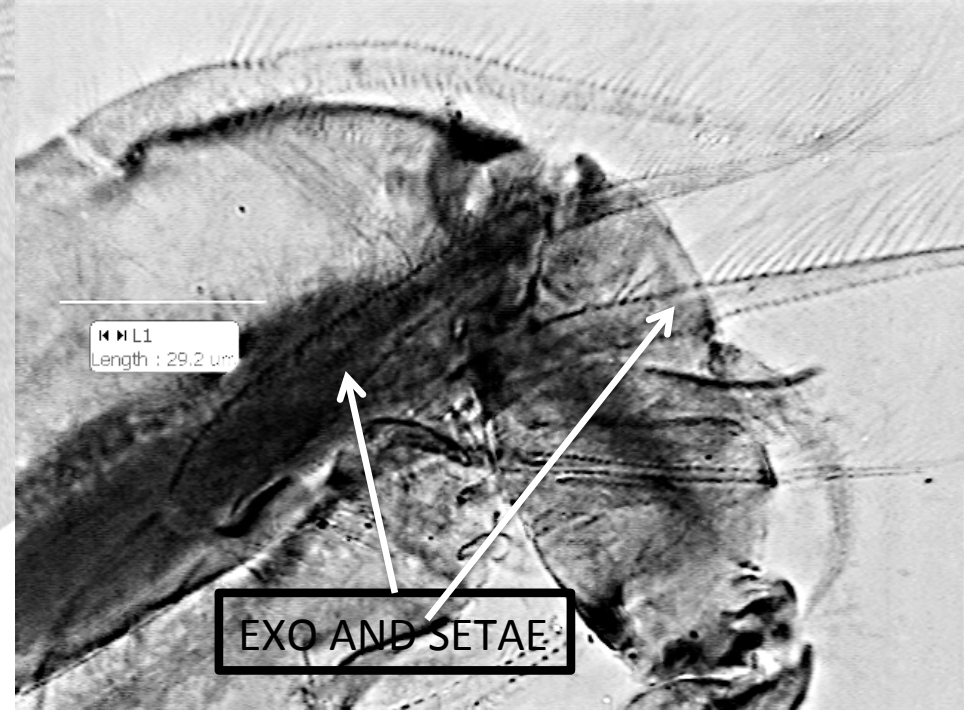
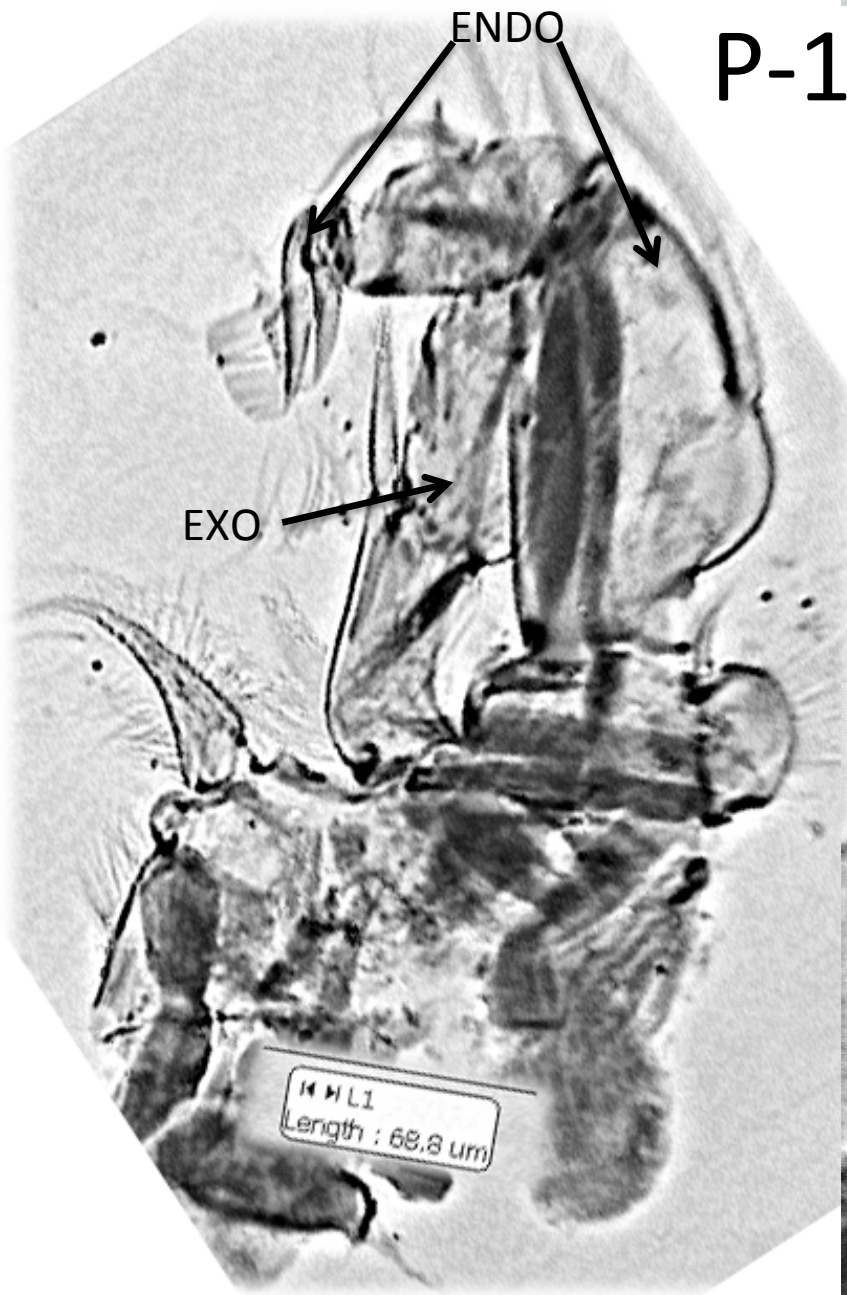


A-
1

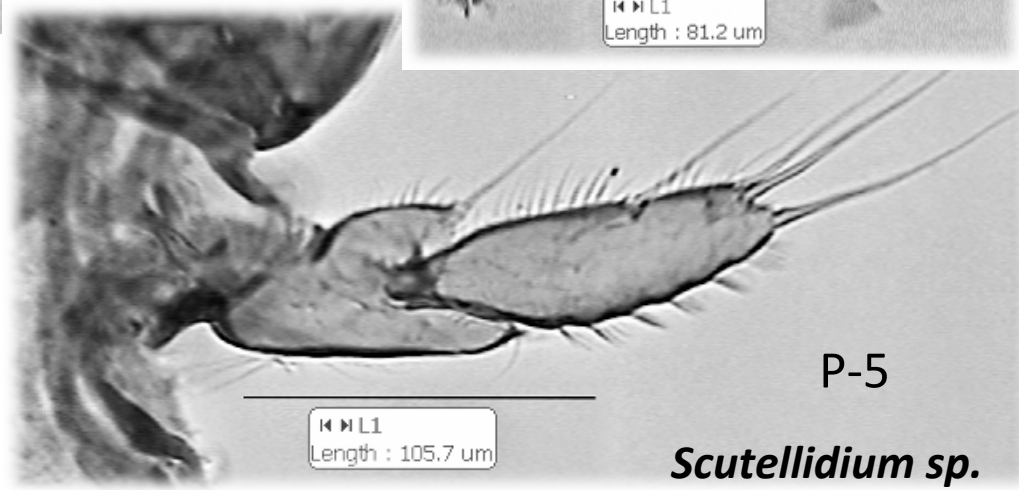
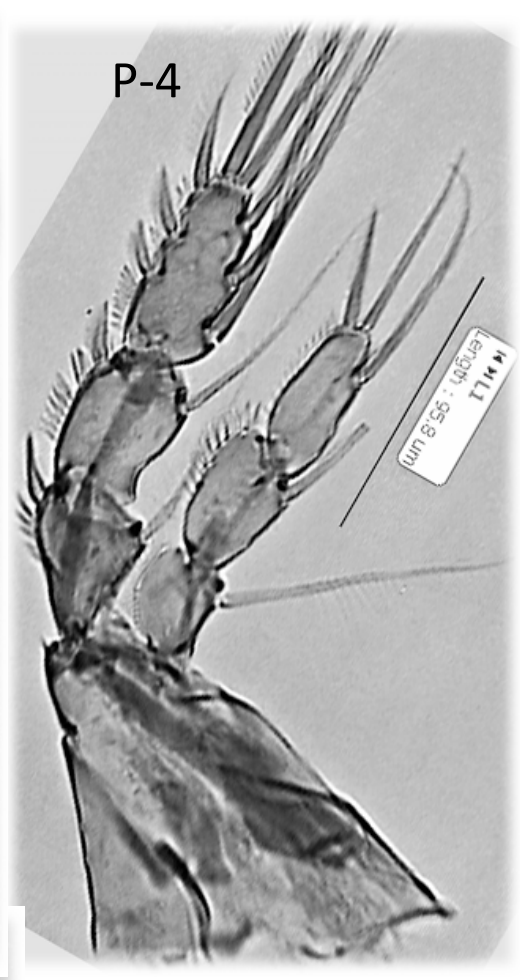
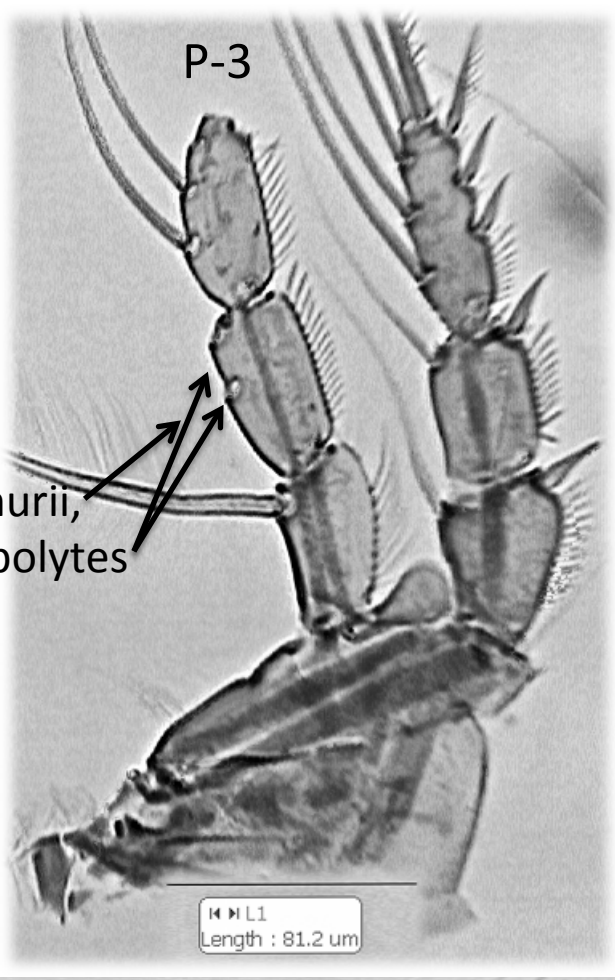
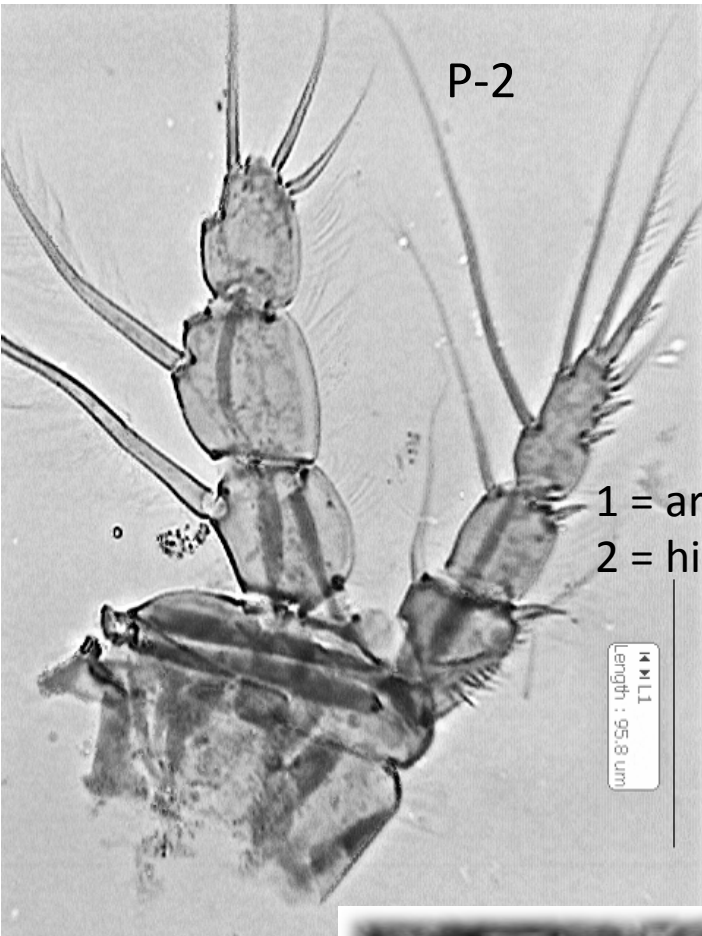




Scutellidium arthuri Poppe, 1884 ?



Scutellidium arthuri Poppe, 1884 ?



NOTE – SETAE
MISSING ON ENDO
OF P-2 & P-3.

Scutellidium sp.

Scutellidium arthuri Poppe, 1884
(Endo segs. 2 & 3 of P2 & P3)

