



HORTUS BOTANICUS UNIVERSITATIS VILNENSIS  
Vilnius University Botanical Garden  
Lithuania

# Index seminum 2017

Seed list (Nr. 27)



*Pseudomuscari azureum* (Fenzl) Garbari & Greuter

**Vilnius University Botanical Garden**  
Kairėnų – 43, LT – 10239, VILNIUS – 40  
LITHUANIA

Phone/fax: +370 5 2317933  
index.seminum@bs.vu.lt,  
www.botanikos-sodas.vu.lt

## The History of the Botanical Garden

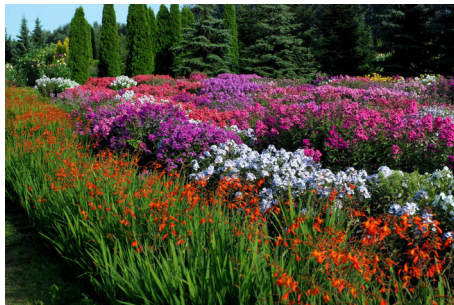
Vilnius University Botanical Garden was founded in 1781. Since then historical circumstances has led to Botanical Garden being moved 4 times from one location to another. Today the Garden resides in two areas, Vingis Park and Kairėnai Estates, and is not only the largest in Lithuania (with combined total area of 199 hectares) but also have the most numerous collections of plants. There are growing about 9,925 taxa, belonging to 220 families and 1120 genera. Largest and most impressive collections are those of rhododendrons, lilacs, lianas, peonies, dahlias and bulb flowers.



Botanical Garden in Kairėnai



Vingis Department of Vilnius University Botanical Garden



### Site details

Date of foundation: 1781

Gardens area: 191.5 ha in Kairėnai

7.35 ha of Vingis Department

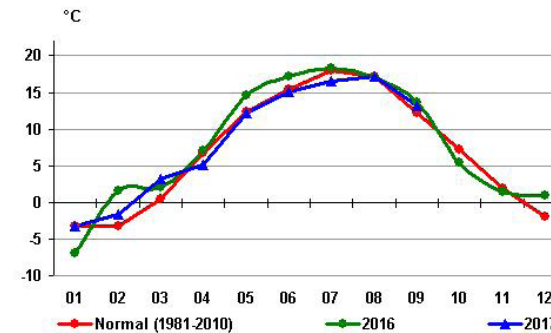
Geographical and climate data

Latitude: N 54°44'08,51"

Longitude E25°24'04,70"



Mean air temperature in Lithuania during 1981–2010, 2016 ir 2017 (<http://www.meteo.lt>):



## NOTICE

The Vilnius University Botanic Gardens has adopted a policy on supplying seeds to the scientific and horticultural community following the International Convention on Biological Diversity (Rio de Janeiro 1992) and The Nagoya Protocol on Access to Genetic Resources and the Fair and Equitable Sharing of Benefits Arising from their Utilization to the Convention on Biological Diversity (2010). In consideration to the Convention the Vilnius University Botanic Gardens gives plant material only to those who use it according to the Convention. Seeds from this catalogue are distributed only under the following conditions:

- the plant material is used only for common good, especially for scientific research, education, species conservation and the development of recognized plant collections;
  - if the purchased material is used commercially written permission must be obtained from the Vilnius University Botanic Gardens. We consider commercialization as any economical use of scientific results won by plant material or its derivatives.
- Orders received for seeds are taken as acceptance of these conditions.

### Explanation of the Index Seminum. Example:

Ordering number	Plant name	Accession number
↓	↓	↓
1	<i>Onoclea sensibilis</i> L.	VIN99/752

Seeds were collected in 2017

### Nomenclature:

<http://www.catalogueoflife.org>

<http://www.ars-grin.gov/cgi-bin/npgs/html/index.pl>

<http://www.ipni.org/index.html>

Botanikos vardų žodynas. Red. R. Jankevičienė, Vilnius.1998.

### Staff:

Director: Dr. A. Skridaila

Seed collectors: G. Busevičiūtė, G. Jurkevičienė, G. Štukėnienė, J. Puočiauskienė, K. Balnytė, R. Juodkaitė, R. Turla, S. Gataveckienė, V. Guseva

Designer: I. Raubaitė

Photographs: G. Jurkevičienė, I. Juškėnienė, I. Raubaitė, R. Juodkaitė, V. Guseva

Compiled by: I. Juškėnienė

## INDEX SEMINUM

### TRACHEOPHYTA

#### Liliopsida

##### Amaryllidaceae (Alliaceae)

- |   |                                     |        |
|---|-------------------------------------|--------|
| 1 | <i>Agapanthus umbellatus</i> L'Hér. | 681/00 |
| 2 | <i>Allium angulosum</i> L.          | 041582 |
| 3 | <i>Allium sphaerocephalon</i> L.    | 130414 |

##### Asparagaceae

- |    |   |           |
|----|---|-----------|
| 4  | <i>Anthericum ramosum</i> L.  | VIN78/718 |
| 5  | <i>Brimeura amethystina</i> (L.) Chouard 'Alba'   | 142034    |
| 6  | <i>Hosta kikutii</i> F.Maek.  | 070617    |
| 7  | <i>Leopoldia comosa</i> (L.) Parl.  | 090439    |
| 8  | <i>Muscari aucheri</i> (Boiss.) Baker   | 131216    |
| 9  | <i>Ornithogalum viridiflorum</i> (L.Verd.) J.C.Manning & Goldblatt ( <i>Galtonia viridiflora</i> L.Verd.) | VIN99/12  |
| 10 | <i>Pseudomuscari azureum</i> (Fenzl) Garbari & Greuter  | 131217    |

##### Cyperaceae

- |    |                                      |        |
|----|--------------------------------------|--------|
| 11 | <i>Carex comans</i> Berggr. 'Bronze' | 140060 |
| 12 | <i>Carex comans</i> Berggr. 'Green'  | 140061 |
| 13 | <i>Carex remota</i> L.               | 160403 |

##### Colchicaceae

- |    |   |        |
|----|---|--------|
| 14 | <i>Colchicum soboliferum</i> (C.A.Mey.) Stef. | 141746 |
|----|---|--------|

##### Commelinaceae

- |    |   |        |
|----|---|--------|
| 15 | <i>Commelina tuberosa</i> L.            | 151215 |
| 16 | <i>Tinantia erecta</i> (Jacq.) Schlecht | 030315 |

##### Iridaceae

- |    |  |        |
|----|--|--------|
| 17 | <i>Gladiolus imbricatus</i> L.               | 120089 |
| 18 | <i>Iris domestica</i> (L.) Goldblatt & Mabb. | 151240 |

<b>Liliaceae</b>			
19	<i>Tulipa urumiensis</i> Stapf.	091518	
20	<i>Tulipa tarda</i> Stapf.	646/95	
<b>Melantiaceae</b>			
21	<i>Veratrum lobelianum</i> Bernh.	060944	
<b>Poaceae</b>			
22	<i>Bouteloua gracilis</i> (Kunth) Lag. ex Griffiths	110506	
23	<i>Bromus hordeaceus</i> L.	NF0449	
24	<i>Elymus hystrix</i> L.	VIN00/380	
25	<i>Festuca rubra</i> L.	NF0447	
26	<i>Festuca rubra</i> L. 'Galahad'	160888	
27	<i>Festuca pratensis</i> Huds.	NF 0446	
28	<i>Festuca trachyphylla</i> Hack. 'Ridu'	141778	
29	<i>Hordeum jubatum</i> L.	160607	
30	<i>Lagurus ovatus</i> L.	437/97	
31	<i>Lolium perenne</i> L.	NF 0453	
32	<i>Melica ciliata</i> L.	160596	
33	<i>Miscanthus sacchariflorus</i> (Maxim) Hack.	VIN78/652	
34	<i>Muhlenbergia mexicana</i> Trin.	151202	
35	<i>Panicum virgatum</i> L.	VIN99/198	
36	<i>Setaria italica</i> (L.) P. Beauv. 'Brown Type'	140321	
37	<i>Stipa brandisii</i> Mez	150190	
38	<i>Stipa robusta</i> (Vasey) Scribn.	151297	
39	<i>Stipa sibirica</i> Lam.	150188	
<b>Xanthorrhoeaceae</b>			
40	<i>Hemerocallis altissima</i> Stout.	091334	
41	<i>Hemerocallis thunbergii</i> Baker.	051041	
<b>Magnoliopsida</b>			
<b>Acanthaceae</b>			
42	<i>Acanthus mollis</i> L.	VIN95/161	
<b>Apiaceae</b>			
43	<i>Astrantia major</i> L.		VIN78/505
44	<i>Cenolophium denudatum</i> (Fisch. ex Hornem.) Tutin		041586
45	<i>Daucus carota</i> L.		150280
<b>Apocynaceae</b>			
46	<i>Apocynum cannabinum</i> L.		VIN99/222
<b>Asclepiaceae</b>			
47	<i>Asclepias incarnata</i> L.		VIN82/17
<b>Asteraceae</b>			
48	<i>Achillea millefolium</i> L.		NF0381
49	<i>Ageratum houstonianum</i> Mill. 'Alba'		160677
50	<i>Antennaria plantaginifolia</i> (L.) Richardson		060951
51	<i>Anthemis tinctoria</i> L.		NF0380
52	<i>Arctium lappa</i> L.		152137
53	<i>Aster mongolicus</i> Franch.		170365
54	<i>Callistephus chinensis</i> Nees 'Pan Pan'		151206
55	<i>Callistephus chinensis</i> Nees 'Serenade Mix'		150452
56	<i>Centaurea jacea</i> L.		NF0401
57	<i>Coreopsis auriculata</i> L.		110617
58	<i>Coreopsis grandiflora</i> 'Solnietchnyj Lug'		150375
59	<i>Cosmos sulphureus</i> Cav.		150084
60	<i>Dahlia merckii</i> Lehn.		643/00
61	<i>Gerbera nivea</i> (DC.) Sch. Bip.		130043
62	<i>Helianthus giganteus</i> L.		150723
63	<i>Helianthella quinquenervis</i> (Hook.) A. Gray		110137
64	<i>Helichrysum bracteatum</i> (Vent.) Andrews 'Salmon Shades'		538/97
65	<i>Heliotropium arborescens</i> L. 'Marine'		715/00
66	<i>Leontopodium alpinum</i> Cass.		475/96
67	<i>Ligularia dentata</i> (A.Gray) Hara		214/92
68	<i>Osteospermum hyoseroides</i> (DC.) Norl.		150978
69	<i>Pulicaria dysenterica</i> (Stev. ex DC.) Nym.		152136

70	<i>Santolina rosmarinifolia</i> L.	160663
71	<i>Senecio jacobaea</i> L.	151001
72	<i>Solidago rigida</i> L.	VIN02/514
73	<i>Tagetes patula</i> L. 'Red Brocate'	131221
74	<i>Tagetes tenuifolia</i> Cav. 'Sperling's Sol'	568/97
75	<i>Tanacetum vulgare</i> L.	NF0386
76	<i>Telekia speciosa</i> (Schreb.) Baumg.	VIN97/350
77	<i>Telekia speciosa</i> (Schreb.) Baumg.	130258
78	<i>Verbesina alternifolia</i> (L.) Britton ex Kearney	030482
79	<i>Xeranthemum annuum</i> L.	150826
80	<i>Zinnia elegans</i> Jacq. 'Swizzle'	160668
81	<i>Zinnia elegans</i> Jacq. 'Profusion Mix'	150508
82	<i>Zinnia peruviana</i> L.	465/97
83	<i>Zinnia peruviana</i> (L.) L. 'Bonita Yellow'	150433

#### Basellaceae

84	<i>Basella alba</i> L. 'Rubra'	150164
----	--------------------------------	--------

#### Brassicaceae

85	<i>Alyssoides utriculata</i> (L.) Medik.	VIN99/433
86	<i>Alyssum wulfenianum</i> Bernh.ex Willd.	150069
87	<i>Lunaria rediviva</i> L.	060949

#### Caryophyllaceae

88	<i>Dianthus barbatus</i> L. 'Tuxedo Black'	469/97
89	<i>Lychnis chalcedonica</i> L.	150849
90	<i>Lychnis coronaria</i> (L.) Desr.	150848
91	<i>Lychnis viscaria</i> L.	150344
92	<i>Saponaria caespitosa</i> DC.	140202
93	<i>Silene chalcedonica</i> (L.) E.H.L. Krause	120666
94	<i>Silene pendula</i> L. 'Compacta'	110636

#### Chenopodiaceae (Amaranthaceae)

95	<i>Dysphania schraderiana</i> (Schult.) Mosyakin & Clemants ( <i>Chenopodium schraderianum</i> Schult.)	VIN031687
----	--	-----------

#### Cistaceae

96	<i>Helianthemum nummularium</i> (L.) Mill. subsp. <i>tomentosum</i> (Scop.) Schinz & Thell.	970362
----	--	--------

#### Cleomaceae

97	<i>Tarenaya hassleriana</i> (Chodat) Iltis	150512
----	--	--------

#### Dipsacaceae

98	<i>Dipsacus laciniatus</i> L.	456/93
99	<i>Scabiosa atropurpurea</i> L.	503/96
100	<i>Scabiosa caucasica</i> M.Bieb. 'Perfection Blue'	152015
101	<i>Scabiosa lucida</i> Vill.	160442
102	<i>Scabiosa ochroleuca</i> L.	151611

#### Euphorbiaceae

103	<i>Euphorbia lathyris</i> L.	070366
-----	------------------------------	--------

#### Fabaceae

104	<i>Astragalus cicer</i> L.	060947
105	<i>Baptisia australis</i> (L.) R.Br.	060950
106	<i>Desmodium canadense</i> (L.) DC.	030759
107	<i>Genista suanica</i> Schischkin	151110
108	<i>Genista tinctoria</i> L.	151118
109	<i>Thermopsis montana</i> Torr.& A.Gray	140038
110	<i>Thermopsis villosa</i> (Walter) Fernald. & B.G. Schub. ( <i>T. caroliniana</i> M.A.Curtis)	VIN00/564
111	<i>Trifolium medium</i> L.	NF0254
112	<i>Trifolium montanum</i> L.	NF0099
113	<i>Trifolium rubens</i> L.	160047

<b>Hypericaceae</b>			143	<i>Stachys byzantina</i> K.Koch	172/92
114	<i>Hypericum perforatum</i> L.	NF0087	144	<i>Teucrium hircanicum</i> L.	152128
<b>Gentianaceae</b>			<b>Malvaceae</b>		
115	<i>Gentiana clausa</i> Raf.	100377	145	<i>Alcea rosea</i> L. mixed colours	238/94
<b>Lamiaceae</b>			146	<i>Alcea rugosa</i> Alef.	150224
116	<i>Agastache foeniculum</i> (Pursh) Kuntze	120665	147	<i>Althaea officinalis</i> L.	VIN81/100
117	<i>Agastache rugosa</i> 'Golden Jubilee'	151336	148	<i>Lavatera olbia</i> L.	482/97
118	<i>Clinopodium vulgare</i> L. subsp. <i>arundanum</i> (Boiss.) Nyman	100506	<b>Nyctaginaceae</b>		
119	<i>Dracocephalum argunense</i> Fisch. ex Link	130454	149	<i>Mirabilis jalapa</i> 'Lutea'	602/94
120	<i>Hyssopus seravschanicus</i> (Dubj.) Pazij	160744	150	<i>Mirabilis jalapa</i> 'Pink'	601/94
121	<i>Leonotis nepetifolium</i> (L.) R.Br.	160187	<b>Onagraceae</b>		
122	<i>Leonurus cardiaca</i> L.	NF0623	151	<i>Clarkia amoena</i> (Lehm.) A.Nelson & J.F.Macbr.	170437
123	<i>Melissa officinalis</i> L.	120737	152	<i>Gaura lindheimeri</i> Engelm. & A. Gray	150833
124	<i>Prunella grandiflora</i> (L.) Scholler	150514	153	<i>Gaura longiflora</i> Spach	151525
125	<i>Salvia amplexicaulis</i> Lam.	VIN97/121	154	<i>Lopezia racemosa</i> Cav.	VIN94/453
126	<i>Salvia azurea</i> Lam.	151534	<b>Papaveraceae</b>		
127	<i>Salvia deserta</i> Schangin	151612	155	<i>Argemone mexicana</i> L. ( <i>A.grandiflora</i> Sweet)	150474
128	<i>Salvia cadmica</i> Boiss.	151313	156	<i>Corydalis cheilanthifolia</i> Hemsl.	100489
129	<i>Salvia coccinea</i> Buc'hoz ex Etl. 'Coral Nymph'	150110	<b>Plantaginaceae (Scrophulariaceae)</b>		
130	<i>Salvia coccinea</i> Buc'hoz ex Etl. 'Lady in Red'	151452	157	<i>Antirrhinum orontium</i> L.	VIN94/86
131	<i>Salvia glutinosa</i> L.	VIN01/356	158	<i>Digitalis purpurea</i> L.	77/92
132	<i>Salvia judaica</i> Boiss.	151317	159	<i>Globularia cordifolia</i> L.	990203
133	<i>Salvia jurisicii</i> Kosanin	151605	160	<i>Globularia nudicaulis</i> (Rouy & Richter) O. de Bolòs, J. Vigo, R.M. Masalles & J.M. Ninot subsp. <i>nudicaulis</i>	140510
134	<i>Salvia nemorosa</i> L.	130089	161	<i>Globularia repens</i> Lam.	100512
135	<i>Salvia splendens</i> Ker Gawl.	510/96	162	<i>Globularia trichosantha</i> Fisch. & C. A. Mey.	120315
136	<i>Salvia splendens</i> Ker Gawl. 'Violacia'	151675	163	<i>Linaria vulgaris</i> Mill.	NF0338
137	<i>Salvia tiliifolia</i> (M.Martens & Galeotti) L.O.Williams	140010	164	<i>Penstemon hirsutus</i> (L.) Willd.	140261
138	<i>Salvia verticillata</i> L.	130090	165	<i>Penstemon procerus</i> Dougl. ex Graham	150751
139	<i>Salvia viridis</i> L.	479/97			
140	<i>Salvia viridis</i> L. 'Clary Bouquet'	150432			
141	<i>Salvia viscosa</i> Jacq.	160494			
142	<i>Scutellaria alpina</i> L.	140425			

166	<i>Plantago altissima</i> L.	152140
167	<i>Plantago sempervirens</i> Crantz	160745
168	<i>Veronica fruticans</i> Jacq.	151271
169	<i>Veronica spicata</i> L.	NF0100
170	<i>Veronica teucrium</i> L.	NF0101

#### **Polemoniaceae**

171	<i>Collomia grandiflora</i> Lindley	VIN 99/254
172	<i>Phlox drummondii</i> Hook.	110100
173	<i>Polemonium caeruleum</i> L. 'Album'	150766

#### **Polygonaceae**

174	<i>Bistorta affinis</i> (D. Don) Greene	060764
-----	---	--------

#### **Ranunculaceae**

175	<i>Actaea europaea</i> (Schipcz.) J. Compton ( <i>Cimicifuga europaea</i> Schipcz.)	VIN98/3
176	<i>Aquilegia saximontana</i> Rydb.	151633
177	<i>Aquilegia vulgaris</i> L. 'Nora Barlow'	150363
178	<i>Eranthis hyemalis</i> Salisb.	VIN74/1769
179	<i>Pulsatilla pratensis</i> (Ugr.) Grey-Wilson subsp. <i>pratensis</i>	120166
180	<i>Trollius cultorum</i> Bergmans 'Orange Princess'	234/97
181	<i>Trollius ledebourii</i> Rchb.	140018
182	<i>Trollius pumilus</i> D. Don	140013

#### **Rosaceae**

183	<i>Acaena novae-zelandiae</i> T. Kirk	150757
184	<i>Dryas drummondii</i> Richards. ex Hook.	151160
185	<i>Dryas octopetala</i> L. f. <i>argentea</i> (Blytt) Hultén	000005
186	<i>Sanguisorba canadensis</i> L.	VIN98/6
187	<i>Sanguisorba minor</i> Scop.	152100

#### **Scrophulariaceae**

188	<i>Nemesia floribunda</i> Lehm.	170063
-----	---------------------------------	--------

189	<i>Nemesia strumosa</i> Benth.	170062
190	<i>Verbascum blattaria</i> L. 'Album'	152017

#### **Saxifragaceae**

191	<i>Tellima grandiflora</i> (Purch) Douglas ex Lindley	VIN94/319
-----	---	-----------

#### **Solanaceae**

192	<i>Salpiglossis sinuata</i> Ruiz & Pav.	120660
-----	---	--------

#### **Verbenaceae**

193	<i>Verbena bonariensis</i> L.	170011
194	<i>Verbena officinalis</i> L.	030338
195	<i>Verbena rigida</i> Spreng. 'Polaris'	150756

#### **Polypodiopsida**

##### **Onocleaceae**

196	<i>Onoclea sensibilis</i> L.	VIN99/752
-----	------------------------------	-----------

##### **Polypodiaceae**

197	<i>Polypodium vulgare</i> L.	041594
-----	------------------------------	--------



*Helianthella quinquenervis*



*Gentiana clausa*



*Allium sphaerocephalon*



*Colchicum sobolifera*



*Brimeura amethystina* 'Alba'



*Globularia nudicaulis* subsp. *nudicaulis*



*Anthemis tinctoria*



*Acaena novae-zelandiae*



*Prunella grandiflora*



*Santolina rosmarinifolia*



*Dryas drummondii*



*Pulicaria dysenterica*



## Agreement of the supply of plant material<sup>1</sup>

According to the provisions and decisions of the Convention on Biological Diversity of 1992 (CBD) and of the Regulation (EU) No 511/2014 of the European Parliament and the council of 16 April 2014, on compliance measures for users from the Nagoya Protocol on Access to Genetic Resources and the Fair and Equitable Sharing of Benefits Arising from their Utilization in the Union, the Vilnius University Botanical Garden is promoting the conservation, sustainable use, and research of biological diversity. The garden therefore expects its partners in acquiring, maintaining, and transferring plant material to always act in accordance with the CBD, the Nagoya Protocol and the Convention on the International Trade in Endangered Species (CITES). The responsibility for legal handling of the plant material passes on to the recipient upon receipt of the material. The requested plant material will be supplied to the recipient only on the following conditions:

1. Based on this agreement, the plant material is supplied only for non commercial use such as scientific study and educational purposes as well as environmental protection. Should the recipient at a later date intend a commercial use or a transfer for commercial use, the country of origin's (the primary "donor" of material) prior informed consent (PIC) must be obtained in writing before the material is used or transferred. The recipient is responsible for ensuring an equitable sharing of benefits with the country of material origin or the primary "donor"<sup>2</sup>.
2. On receiving the plant material, the recipient endeavors to document the received plant material, its origin (country of origin, first receiving garden, "donor" of the plant material, year of introduction) as well as the acquisition and transfer conditions in a comprehensible manner.
3. In the event that scientific publications are produced based on the supplied plant material, the recipient is obliged to indicate the origin of the material (the supplying garden and if known the country of origin or primary donor) and to send these publications to the garden and to the country of origin (primary "donor") without request.
4. On request, the garden will forward relevant information on the transfer of the plant material to the body charged with implementing the CBD<sup>3</sup>.
5. The recipient may transfer the received plant material to third parties only under these terms and conditions and must document the transfer in a suitable manner.

<sup>1</sup> According to the CBD "genetic resources" means genetic material of actual or potential value. This definition covers both living and non-living material.

<sup>2</sup> The country of material origin or the primary "donor" of the material provided by Vilnius University Botanical Garden is possible to identify using accession number of specimen (indicated on the Seed List) and information available on-line <http://botsodas.lt/indexplantarum/index/lang/en>.

<sup>3</sup> Ideally, the national focal point in the garden's home country

I accept these conditions.

Date & Signature Recipient's name, address,  
stamp



VILNIUS UNIVERSITY BOTANICAL GARDEN  
Kairėnų – 43, LT – 10239,  
VILNIUS – 40, LITHUANIA  
Phone/fax: +370 5 2317933  
[www.botanikos-sodas.vu.lt](http://www.botanikos-sodas.vu.lt)  
**[index.seminum@bs.vu.lt](mailto:index.seminum@bs.vu.lt)**

## DESIDERATA 2017

Your address:

Attention:

- \* Please limit your order to 25 samples (use serial (left side) numbers).
- \* Please return your request before 16 of MARCH 2018.
