



United States Environmental Protection Agency, Region 2
Caribbean Environmental Protection Division
City View Plaza, Suite 7000
#48 Road 165 km 1.2
Guaynabo, Puerto Rico 00968

**NATIONAL POLLUTANT DISCHARGE ELIMINATION SYSTEM (NPDES) PHASE II
SMALL MUNICIPAL SEPARATE STORM SEWER SYSTEMS (MS4)**

2016 OCT 28 PM 1:51
US EPA
OEPRD
RECEIVED

NOTICE OF INTENT

2016 MS4 General Permit

Permit Number PRR040069

Submitted by:



Municipality of Quebradillas
P.O. Box 1544
Quebradillas, Puerto Rico 00678-1544

October 2016

TABLE OF CONTENTS

Part A. General Information.....3
Part B. Primary MS4 Program Manager Contact Information.....3
Part C. Eligibility Determination.....4
Part D. Map/Boundaries.....4
Part G. Receiving Waters.....5
Part H. Summary of Stormwater Management Program (SWMP) under the 2006 Small MS4 General Permit.....6
Part I. 2016 Stormwater Management Program (SWMP) Summary.....10
Part J. Application Certification and Signature.....17

ATTACHMENTS

Figure 1. Location Map

Figure 2. Municipality of Quebradillas - Wards

Figure 3. Municipality of Quebradillas - Urbanized Areas

2012 USFWS List of Endangered/Threatened Species Distribution and Critical Habitats in the Municipality of Quebradillas

United States Environmental Protection Agency
National Pollutant Discharge Elimination System
Notice of Intent (NOI) for coverage under the Small Municipal Separate
Storm Sewer System (MS4) General Permit (PRR040069) for Puerto Rico

Part A. General Information

1. Name of Municipality or Organization: QUEBRADILLAS
2. Type: Federal State Municipality Other: _____
3. Existing Permittee: Yes No If yes, provide EPA NPDES Permit Number: P R R 0 4 0 0 6 9
4. Location Address:
 - a. Street: #60 San Carlos Street
 - b. City: Quebradillas State: PR Zip Code: 00678
5. Mailing Address:
 - a. Street: P.O. Box 1544
 - b. City: Quebradillas State: PR Zip Code: 00678-1544
6. Telephone Number: 787-895-2840 Fax: 787-895-7734
7. E-mail: obraspublicas@mquebradillas.com
8. Standard Industrial Classification (SIC) Code (see instructions for common codes): 9 1 9 9
9. Latitude: (use the format provided.) Longitude: (use the format provided.)

2.2.4.2 Approximate center of the regulated portion of the MS4.

1 8 ° 2 6 ' 5 5 " N (degrees, minutes, seconds) 6 6 ° 5 5 ' 3 3 " W (degrees, minutes, seconds)
Or
1 8 . 4 4 8 6 N (degrees decimal) 6 6 . 9 2 6 0 W (degrees decimal)

Part B. Primary MS4 Program Manager Contact Information

1. Name: Juan E. Cáceres Hernández, PE
2. Position Title: Projects Management and Development Office Director
3. Stormwater Management Program (SWMP) Location (web address or physical location): Projects Management and Development Office, #60 San Carlos Street, Quebradillas, PR 00678
4. Mailing Address:
 - a. Street: P.O. Box 1544
 - b. City: Quebradillas State: PR Zip Code: 00659

United States Environmental Protection Agency
National Pollutant Discharge Elimination System
Notice of Intent (NOI) for coverage under the Small Municipal Separate
Storm Sewer System (MS4) General Permit (PRR040069) for Puerto Rico

5. Telephone Number: 787-291-0182
6. E-mail: gerenciadeproyectos@mquebradillaspr.com

Part C. Eligibility Determination

1. Endangered Species Act (ESA) determination complete? Yes No
- a. Eligibility Criteria (check all that apply): A B C D E
2. National Historic Preservation Act (NHPA) determination complete? Yes No
- a. Eligibility Criteria (check all that apply): A B C D

Part D. Map/Boundaries

1. MS4/Organization Description of regulated boundaries (narrative):
- The Municipality of Quebradillas is located in the northern coast and encompasses an area approximately 23.05 square miles. The municipality has a population of 25,919 people (US Census, 2010). To the North is bounded by the Atlantic Ocean, to the South by the municipality of San Sebastian, to the East by the Municipality of Camuy and to the West it bounds with the Municipality of Isabela. The Municipality's Urbanized rea (UA) extents approximately to 15.01 square miles. The UA extents throughout the eight (8) wards within the municipality: Cacao, Charcas, Cocos, Guajataca, Quebradillas (Barrio Pueblo), San Antonio, San José and Terranova. The major receiving water bodies within the municipality's jurisdiction are the Río Guajataca, Lago Guajataca, y Quebrada Bellaca.
2. Location Map/Boundaries. A location map must be attached showing the pertinent city, town, wards, or boundaries, the boundaries of the Small MS4, including surface water body(s), and the "urbanized area" (UA) when applicable.
- Is map attached? Yes No

Part E. MS4 Infrastructure (if covered under the 2006 general permit)

1. Estimated Percent of Outfall Map Complete? (Part 4.2.3 of 2006 general permit): 0 %
- a. If 100% of 2006 requirements are not met, enter an estimated date of completion: June 30, 2017
(MM/DD/YYYY)
- b. Web address where MS4 map is published: A Copy of the MS4 map will be made available for public review at the Municipality of Quebradillas Projects Management Office.
- If outfall map is unavailable on the internet an electronic or paper copy of the outfall map must be included with NOI submission.*

Part F. Bylaw/Ordinance Development (if covered under the 2006 general permit)

1. Illicit Discharge Detection and Elimination (IDDE) authority adopted? Yes No
- a. Effective Date or Estimated Date of Adoption: December 15, 2017
(MM/DD/YYYY)

**United States Environmental Protection Agency
National Pollutant Discharge Elimination System**
Notice of Intent (NOI) for coverage under the Small Municipal Separate
Storm Sewer System (MS4) General Permit (PRR040069) for Puerto Rico

2. Construction/Erosion and Sediment Control authority adopted? Yes No
 a. Effective Date or Estimated Date of Adoption: December 15, 2017
(MM/DD/YYYY)

3. Post-Construction Stormwater Management adopted? Yes No
 a. Effective Date or Estimated Date of Adoption: December 15, 2017
(MM/DD/YYYY)

Part G. Receiving Waters

List the names of all surface waterbody segments to which your MS4 discharges. For each waterbody segment, please report the number of outfalls discharging into it and, if applicable, any impairments. You may attach additional information.

Waterbody Segment that receives flow from the MS4	Number of Outfalls into receiving waterbody segment	Have any monitoring been performed to outfalls? (Yes/No)	List of Pollutant(s) causing impairment (if applicable)	List of TMDL Pollutant (s) (if any)
Río Guajataca (PRNR3A1)	To be determined.	No	Cyanide and Fecal Coliforms; Confined Animal Feeding Operations, Landfills, Minor Industrial Point Source, and Onsite Wastewater Systems.	TMDL needed for Cyanide and Fecal Coliforms.
Río Guajataca (PRNR3A2)	To be determined.	No	Cyanide and Fecal Coliforms; Agriculture, Collection System Failure, Confined Animal Feeding Operations, Major Municipal Point Source, Minor Industrial Point Source, Onsite Wastewater Systems, Urban Runoff/Storm Sewers.	Fecal Coliforms. TMDL needed for Cyanide.
Río Guajataca Estuary (PRNE3A)	To be determined.	No	No impairment data have been reported to EPA for this waterbody.	No TMDL data have been recorded by EPA for this waterbody.
Lago Guajataca (PRNL3A1)	To be determined.	No	Fecal Coliforms and Low Dissolved Oxygen; Confined Animal Feeding Operations, Minor Industrial Point Sources, Onsite Wastewater Systems.	Fecal Coliforms. TMDL needed for Dissolved Oxygen.
Quebrada Bellaca (PRNQ4A)	To be determined.	No	No impairment data have been reported to EPA for this waterbody.	Fecal Coliforms.
Quebrada Bellaca Estuary (PRNE4A)	To be determined.	No	No impairment data have been reported to EPA for this waterbody.	Fecal Coliforms.

United States Environmental Protection Agency
National Pollutant Discharge Elimination System
 Notice of Intent (NOI) for coverage under the Small Municipal Separate
 Storm Sewer System (MS4) General Permit (PRR040069) for Puerto Rico

Part H. Summary of Stormwater Management Program (SWMP) under the 2006 Small MS4 General Permit

For every measurable goal and associated Best Management Practice (BMP) listed in the adopted program, provide the following information (You may include additional pages):

BMP Description or BMP ID (e.g. MCM-1)	Goal Achieved? (Yes/No)	Continued in next permit cycle? (Yes/No)	Who was the targeted audience? Explain reason for not achieving goal.	Modification(s) to goals or BMP for next permit cycle
MCM-1. Public Education and Outreach				
Development, production and distribution/posting public service announcements related to stormwater pollution control.	No	Yes	Business owners, contractors, residents and general public Budget and resources limitations.	None
Development of a Public Education and Outreach Municipal Program focused raising stormwater pollution prevention in local schools.	No	Yes	General public and local K-12 schools. Budget and resources limitations.	None
Partnership with local commercial lawn care companies, and other volunteers for the development of a regional educational program for the appropriate management and application of fertilizers and pesticides.	No	Yes	Business owners, contractors, residents and general public. Budget and resources limitations, as well as limited personnel to coordinate required tasks.	None
Development and distribution of stormwater pollution prevention outreach material including pamphlets, booklets, and flyers	No	Yes	Business owners, contractors, residents and general public. Budget and resources limitations.	None
Development of a Municipal Stormwater Management Program Web Site as a public information and interactive tool.	No	Yes	Business owners, contractors, residents and general public. Budget and resources limitations, as well as limited personnel to coordinate required tasks.	None
MCM-2. Public Participation				
Development of Storm Drain Stenciling Program as a tool to reduce illegal dumping of litter, oil, pesticides and other toxic substances down urban runoff drainage systems. The stenciling program will be implemented through the help of volunteers.	No	Yes	Local K-12 schools, community groups and general public. Budget and resources limitations, as well as limited personnel to coordinate required tasks.	None
Adopt-A-Stream Volunteer Program	No	Yes	Local businesses, community groups, schools, and general public. Budget and resources limitations, as well as limited personnel to coordinate required tasks.	None

**United States Environmental Protection Agency
National Pollutant Discharge Elimination System**
Notice of Intent (NOI) for coverage under the Small Municipal Separate
Storm Sewer System (MS4) General Permit (PRR040069) for Puerto Rico

BMP Description or BMP ID (e.g. MCM-1)	Goal Achieved? (Yes/No)	Continued in next permit cycle? (Yes/No)	Who was the targeted audience? Explain reason for not achieving goal.	Modification(s) to goals or BMP for next permit cycle
Volunteer Monitoring Program	No	Yes	Local businesses, community groups, schools, and general public. Budget and resources limitations, as well as limited personnel to coordinate required tasks.	None
Reforestation Program / Riparian Buffers Restoration	No	Yes	Local businesses, community groups, schools, and general public. Budget and resources limitations, as well as limited personnel to coordinate required tasks.	None
Stakeholder Meetings / Public Discussions about stormwater management and pollution control requirements	No	Yes	Local businesses, community groups, local and state government representatives, and general public. Budget and resources limitations, as well as limited personnel to coordinate required tasks.	None
Development of a Watershed Council or Organization integrated by locally organized, voluntary, non-regulatory groups to develop partnerships between residents, local businesses, state and federal agencies with the purpose of restoring, protecting, and promoting the existing natural resources in the Municipality of Quebradillas.	No	Yes	Local businesses, community groups, local and state government representatives, and general public. Budget and resources limitations, as well as limited personnel to coordinate required tasks.	None
MCM-3. Illicit Discharge Detection Elimination				
Creation of a Stormwater Sewer System Map	No	Yes	Municipal personnel, volunteers, and environmental groups. Budget and resources limitations.	None
Illicit Discharge Detection and Elimination (IDDE) Program Development	No	Yes	Municipal personnel. Budget and resources limitations, as well as limited personnel to coordinate required tasks.	None
Regulation Implementation.	No	Yes	Regulated Community (Contractors, Construction Companies, Engineers, other professionals) Budget and resources limitations, as well as limited personnel to coordinate	None

**United States Environmental Protection Agency
National Pollutant Discharge Elimination System**
Notice of Intent (NOI) for coverage under the Small Municipal Separate
Storm Sewer System (MS4) General Permit (PRR040069) for Puerto Rico

BMP Description or BMP ID (e.g. MCM-1)	Goal Achieved? (Yes/No)	Continued in next permit cycle? (Yes/No)	Who was the targeted audience? Explain reason for not achieving goal.	Modification(s) to goals or BMP for next permit cycle
Illegal Dumping Control Program.	No	Yes	Municipal personnel, local businesses, residents, and local industries. Budget and resources limitations, as well as limited personnel to coordinate required tasks.	None
Community Hotline	No	Yes	General public. Budget and resources limitations.	None
Wastewaters Connection Elimination Program	No	Yes	Municipal managers/personnel. Budget and resources limitations, as well as limited personnel to coordinate required tasks.	None
Recreational Sewage Management Program	No	Yes	Municipal managers/personnel. Budget and resources limitations, as well as limited personnel to coordinate required tasks.	None
Sanitary Sewer Overflow Prevention Program	No	Yes	Municipal managers/personnel. Budget and resources limitations, as well as limited personnel to coordinate required tasks.	None
Failing Septic System Elimination Program	No	Yes	Municipal managers/personnel. Budget and resources limitations, as well as limited personnel to coordinate required tasks.	None
MCM-4. Construction Site Stormwater Runoff Control				
Local Ordinance for Construction Site Runoff Control	No	Yes	Municipal managers/personnel and contractors. Budget and resources limitations	None
Construction Phase Plan Review	Yes	Yes	Municipal managers/personnel and contractors.	None
Municipal Construction Inspection Program	Yes	Yes	Municipal managers/personnel and contractors.	None
MCM-5. Post-Construction Stormwater Management in New Development and Redevelopment				
BMPs Inspection and Maintenance Program.	Yes	Yes	Municipal managers/personnel and contractors.	None.
Green Parking Program	Yes	Yes	Municipal managers/planners, public works personnel, project designers and contractors.	None

**United States Environmental Protection Agency
National Pollutant Discharge Elimination System**
Notice of Intent (NOI) for coverage under the Small Municipal Separate
Storm Sewer System (MS4) General Permit (PRR040069) for Puerto Rico

BMP Description or BMP ID (e.g. MCM-1)	Goal Achieved? (Yes/No)	Continued in next permit cycle? (Yes/No)	Who was the targeted audience? Explain reason for not achieving goal.	Modification(s) to goals or BMP for next permit cycle
Urban Forestry Program	Yes	Yes	Municipal managers/planners, and public works personnel.	None
Grassed Swale Program	Yes	Yes	Municipal managers/planners, public works personnel, project designers and contractors.	None
MCM-6. Pollution Prevention / Good Housekeeping for Municipal Operations				
Municipal Employee Training and Education.	Yes	Yes	Municipal managers / personnel.	None
Municipal Vehicle and Equipment Maintenance Program	Yes	Yes	Municipal personnel / Municipal Department of Public Works personnel	None
Storm Drain System Cleaning Program	Yes	Yes	Municipal Department of Public Works	None
Municipal Landscaping and Lawn Care Program	Yes	Yes	Municipal Department of Public Works personnel	None
Hazardous Materials Storage Program	Yes	Yes	Municipal Department of Public Works personnel	None
Spill Response and Prevention Program	Yes	Yes	Municipal Department of Public Works personnel	None
Materials Management Program	Yes	Yes	Municipal personnel / Municipal Department of Public Works personnel	None

**United States Environmental Protection Agency
National Pollutant Discharge Elimination System**
Notice of Intent (NOI) for coverage under the Small Municipal Separate
Storm Sewer System (MS4) General Permit (PRR040069) for Puerto Rico

Part I. 2016 Stormwater Management Program (SWMP) Summary

Public Education and Outreach (See Part 2.4.2 for detailed information of required BMPs):

BMP Description or BMP ID (e.g. MCM-1)	Education Topic (Identify the issue your BMP is educating the public about.)	Outreach Method (Describe the method used to convey this topic, e.g. mailing, events, school, etc.)	Measurable Goal (What is the end result of this program? What indicator will determine the goal has been met? (e.g., number mailing sent, people at event, class participation, etc.)
Public Education Material	<ul style="list-style-type: none"> • Illegal discharge awareness. • Proper disposal of leftover paint and other household chemicals. • Proper application of lawn-chemicals (fertilizers, herbicides and pesticides). • Changing motor-oil. • Disposal of pet-waste. • Nutrient management for Animal Feeding Operations (AFOs). • Addressing urban littering through recycling (Reduce-Reuse-Recycle). • Residential Car Washing. • Water Conservation. 	<ul style="list-style-type: none"> • Pamphlets • Flyers • Posters • School Talks • Workshops • Public (Municipal) Events • Social Media • Municipal Employee Work – Related Training. 	Number of educational material distributed annually; number of talks per year; number downloads per month from a dedicated web address; or number of visits per month to social media website.
Public Service Announcements (PSA)	<ul style="list-style-type: none"> • Illegal discharge awareness. • Onsite Wastewater System Inspections. • Proper disposal of leftover paint and other household chemicals. • Proper application of lawn-chemicals (fertilizers, herbicides and pesticides). • Changing motor-oil. • Disposal of pet-waste. • Addressing urban littering through recycling (Reduce-Reuse-Recycle). • Residential Car Washing. • Water Conservation. 	<ul style="list-style-type: none"> • Public Service Announcements (PSA) of 30-seconds in duration for play on radio or television. • Creation of informational articles in the local newspaper media. 	Quantity of radio program and local newspaper co-sponsors, number of radio program callers, quantity of reading material distributed.
Development and implementation of a written adaptive Public Education and Outreach Plan	<ul style="list-style-type: none"> • MS4 Water Quality Issues. • Target Audiences. • Methods for Public Education. 	<ul style="list-style-type: none"> • Public Meetings • Public Notices 	Completed Public Education and Outreach Plan.

**United States Environmental Protection Agency
National Pollutant Discharge Elimination System**
Notice of Intent (NOI) for coverage under the Small Municipal Separate
Storm Sewer System (MS4) General Permit (PRR040069) for Puerto Rico

Part I. 2016 Stormwater Management Program (SWMP) Summary (continued)

Public Involvement and Participation (See Part 2.4.3 for detailed information of required BMPs):

BMP Description or BMP ID (e.g. MCM-1)	Program Description (Describe the program and how it will inspire public participation, e.g. special events, volunteer sampling and monitoring efforts, household hazardous waste recycling, etc.)	Measurable Goal (What is the end result of this program? What indicator will determine the goal has been met? (e.g., participation, amount of sampling performed, waste collected, etc.)
Storm Drain Stenciling Program	<ul style="list-style-type: none"> • The Municipality will develop an on-going program of storm drain stenciling until all basins in the municipality have been stenciled. • The stenciling program will consist on volunteers applying stenciled messages to storm drains advising people not to dump substances or material into the storm water sewer system. • The stencil program will help public to be aware of location of each catch basin, and the consequence of dumping substances into them. • This initiative is focused to the general public. • This program includes the preventive maintenance of the storm sewer system. It will be implemented after all catch basin have been stenciled. 	Completed catch basins - The municipality will create a voluntary, ongoing stenciling program with the target of stenciling all catch basins.
Stencil Maintenance Program	<ul style="list-style-type: none"> • The Municipality will provide maintenance to the stenciling of storm sewer catch basin previously made under the storm sewer stencil program. • The Stencil maintenance program will need periodic maintenance of informational devices used. • The objective of this control measure is to promote the participation of the employees of the Municipality, volunteers and the general public. 	A work record of each catch basin and the maintenance activities will be provided, including number of participants per year.
Adopt-a-Stream Volunteer Program	<ul style="list-style-type: none"> • The Municipality will make effort in promoting the participation of groups of the community by adopting streams, which receive urban storm water discharges. • The contents of the program will emphasize en the maintenance, conservation and pollution control activities to surface water systems programs. • An “adopt to stream” program will promote the sense of ownership of each community group with the program, thus promoting its participation. 	Number of “stream walks” and cleanups conducted each year, as well as the number of participants, will serve as a measureable goal.

United States Environmental Protection Agency
National Pollutant Discharge Elimination System
 Notice of Intent (NOI) for coverage under the Small Municipal Separate
 Storm Sewer System (MS4) General Permit (PRR040069) for Puerto Rico

Part I. 2016 Stormwater Management Program (SWMP) Summary (continued)

Illicit Discharge Detection and Elimination (See Part 2.4.4 for detailed information of required BMPs):

BMP Description or BMP ID (e.g. MCM-1)	Program Description (Describe the program and how it will identify and remove illicit connections from the MS4, e.g. new regulations, investigation practices, removal of illicit connections, etc.)	Measurable Goal (What is the end result of this program? What indicator will determine the goal has been met? (e.g., adoption of bylaws/ordinances, amount of investigation performed, identified and removed illicit connections, etc.)
Storm Sewer System Map	<ul style="list-style-type: none"> • The Municipality will prepare, maintain, and update as needed, its inventory of the storm water infrastructure located in the urban area. • The storm sewer system map will include the location of outfalls, any structural pollution control devices and the identification of water receiving bodies. • All obtained data will be plotted in a master set of drawings and/or GIS database. • The storm sewer system map is needed for the management activities of the program such as inspections and preventive maintenance. 	Completed map percent – The Storm Sewer System Map should be 100% completed by June 30, 2017. The map will be updated as needed in the future if expansion or modification to the storm sewer occurs.
Illicit Connection Identification and Elimination	<ul style="list-style-type: none"> • The Municipality will implement the monitoring program to detect illicit connections and discharges to both outfall and storm water system. • The identification of possible illicit connections will be carried out during the storm drain system map preparation and thereafter as part of the monitoring program. • The information gathered during the assessment of illicit connections is primarily for the use of MS4 municipal managers. • Based on the information collected in the field, corrective measures are undertaken for each particular case. 	Number of illicit discharge points/locations into the Storm Water System identified per year.
Municipal Ordinances	<ul style="list-style-type: none"> • The Municipality will create, modify and/or amend existing ordinances aimed to prohibiting the disposal of waste to regulated areas and/or into a storm drain. • The ordinances created, modified and/or amended will provide authority to the Municipality to create and enforce regulations aimed at reducing storm water pollution activities. 	Adoption of Municipal Ordinance or other administrative order as needed.
Community Hotline	<ul style="list-style-type: none"> • The system will be operating 24 hours a day, seven days per week. The phone number will be included in all educational material distributed. • It will also assign a person for answering and referring all calls during normal working hours. • During non-working hours all calls will be referred to the Municipal Police. The responsible municipal police officer will retrieve all recorded messages and initiate appropriate action. 	Numbers of phone calls and/or referrals received per year.

United States Environmental Protection Agency
National Pollutant Discharge Elimination System
 Notice of Intent (NOI) for coverage under the Small Municipal Separate
 Storm Sewer System (MS4) General Permit (PRR040069) for Puerto Rico

BMP Description or BMP ID (e.g. MCM-1)	Program Description (Describe the program and how it will identify and remove illicit connections from the MS4, e.g. new regulations, investigation practices, removal of illicit connections, etc.)	Measurable Goal (What is the end result of this program? What indicator will determine the goal has been met? (e.g., adoption of bylaws/ordinances, amount of investigation performed, identified and removed illicit connections, etc.)
Storm Sewer System Inspection Program	<ul style="list-style-type: none"> • The Municipality will implement the storm sewer system inspection program. • Inspections will include the detection of illicit discharges and general assessment of the system condition. • The municipality may use specialized equipment such as cameras, flushing trucks and the like. • Inspections will be performed by the Municipal Department of Public Works. 	Record of all inspection and maintenance activities conducted by the Municipal Department of Public Works.

**United States Environmental Protection Agency
National Pollutant Discharge Elimination System**
Notice of Intent (NOI) for coverage under the Small Municipal Separate
Storm Sewer System (MS4) General Permit (PRR040069) for Puerto Rico

Part I. 2016 Stormwater Management Program (SWMP) Summary (continued)

Construction Site Stormwater Runoff Control (See Part 2.4.5 for detailed information of required BMPs):

BMP Description or BMP ID (e.g. MCM-1)	Program Description (Describe the program and how it will help control stormwater runoff at construction sites, e.g. new regulations, construction practices, inspection protocols, etc.)	Measurable Goal (What is the end result of this program? What indicator will determine the goal has been met? (e.g., adoption of bylaws/ordinances, amount of inspections performed and sites actively regulated, etc.)
Construction Phase Plan Review	<ul style="list-style-type: none"> • Develop and implement a municipal ordinance related to erosion and sediment control, requiring that contractors, conducting either privately or publicly funded construction projects, submit evidence of filing and approval of a Stormwater Management Plan and/or Erosion and Sediment Control Plan to the corresponding regulatory agencies (e.g., Environmental Quality Board [EQB] and/or Puerto Rico Permits Management Office [OGPe, for its Spanish acronym). • In the event that the proposed construction activities impact an area greater than one-acre, a copy of the notice-of-intent (NOI) submitted to the EPA must be delivered by the contractor to the Municipality related to its NPDES General Construction Permit. • In the event that the impacted area exceeds 900 square meters, or 40 cubic meters of extraction of soil the contractor shall submit a copy of the transmittal letter included with the stormwater runoff control plan and copy of its approval letter by the OGPE and/or EQB • For impacted areas less than 900 square meters or less 40 cubic meters, the contractor shall submit a notice of soil extraction to the Municipality certifying the project's area. The Municipality will waive the need of a municipal permit for erosion control purposes and will notify the contractor of such decision. 	Number of construction endorsements issued pursuant the municipal endorsements requirements.
Require contractors to certify that all Storm Water System connections were performed in accordance with approved plans and specifications	<ul style="list-style-type: none"> • Develop and implement municipal ordinance requirements for all contractors after the completion of each construction project, requiring submitting a certification stating that they performed the project according to OGPe approved plans and specifications. • The Municipality will also require that all contractors, after the completion of each project, submit an "as built" set of drawings showing new storm water infrastructure. The Municipality shall use these "as built" drawings to update the original Storm Sewer System Map. 	Number of "As-Built" Drawings submitted by contractors at the Project Management Office.

United States Environmental Protection Agency
National Pollutant Discharge Elimination System
 Notice of Intent (NOI) for coverage under the Small Municipal Separate
 Storm Sewer System (MS4) General Permit (PRR040069) for Puerto Rico

Part I. 2016 Stormwater Management Program (SWMP) Summary (continued)

Post-Construction Stormwater Management in New Development and Redevelopment (See Part 2.4.6 for detailed information of required BMPs):

BMP Description or BMP ID (e.g. MCM-1)	Program Description (Describe the program and how it will control stormwater runoff from properties after they are developed, e.g. new regulations, practices, or resources for contractors to use Low Impact Development (LID), etc.)	Measurable Goal (What is the end result of this program? What indicator will determine the goal has been met? (e.g., adoption of bylaws/ordinances, amount of implemented practices, development of capacity building resources, etc.)
BMPs Inspection and Maintenance Program	<ul style="list-style-type: none"> • The Municipality will continue to implement the BMPs inspection and maintenance program for both existing and new storm sewer infrastructure. • Standard operating procedures for inspections, preventive and corrective actions will be modify and/or amend as needed. • Inspections will be provided as required. • Preventive maintenance will be provided annually. 	Number of work orders issued for corrective maintenance per year. Number of inspection reports for preventive maintenance per year.
Watershed Protection through Green Programs	<ul style="list-style-type: none"> • The Municipality will continue to implement protective measures within the municipality by promoting green initiatives in new and redevelopment project, such as: <ul style="list-style-type: none"> ○ Green Parking Program ○ Urban Forestry Program ○ Grassed Swale Program ○ And other natural features protection. 	Number of implemented protective measures per year.

**United States Environmental Protection Agency
National Pollutant Discharge Elimination System**
Notice of Intent (NOI) for coverage under the Small Municipal Separate
Storm Sewer System (MS4) General Permit (PRR040069) for Puerto Rico

Part I. 2016 Stormwater Management Program (SWMP) Summary (continued)

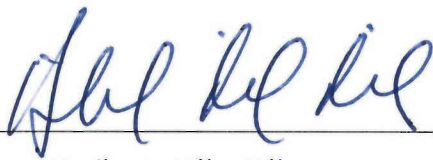
Good Housekeeping and Pollution Prevention in Municipal Operations (See Part 2.4.7 for detailed information of required BMPs):

BMP Description or BMP ID (e.g. MCM-1)	Program Description (Describe the program and how it will mitigate stormwater runoff at municipal properties or through municipal activities, e.g. installation of structural stormwater controls on the municipal properties, new practices to reduce pollutant exposure to rain events, runoff management, trainings, etc.)	Measurable Goal (What is the end result of this program? What indicator will determine the goal has been met? (e.g., structural BMPs installed, SOPs developed and implemented, etc.)
Municipal Employee Training and Education	<ul style="list-style-type: none"> The municipality will continue the ongoing training program for Department of Public Works personnel related to stormwater management and handling of hazardous materials. Development / Revision of standard operating procedures (SOPs) that incorporate stormwater BMPs for common municipal operation activities, including spill response and prevention procedures. 	Employees trained per year, and completed SOPs for common municipal operation activities.
Municipal Vehicle and Equipment Maintenance	<ul style="list-style-type: none"> The Municipality will continue to perform periodic compliance inspections to municipal vehicles and equipment, to identify any area of improvement related to the prevention of pollution that may be caused by municipal operations. 	Number of inspections at each Municipality's vehicle maintenance facility per year.
Storm Sewer System Cleaning	<ul style="list-style-type: none"> The Municipality will continue to perform routine cleaning of clogged drains and storm drains inlets to reduce overflow and erosion/sedimentation problems. 	Number of storm drains and inlets cleaned per year and amount of waste material removed.

United States Environmental Protection Agency
National Pollutant Discharge Elimination System
Notice of Intent (NOI) for coverage under the Small Municipal Separate
Storm Sewer System (MS4) General Permit (PRR040069) for Puerto Rico

Part J. Application Certification and Signature

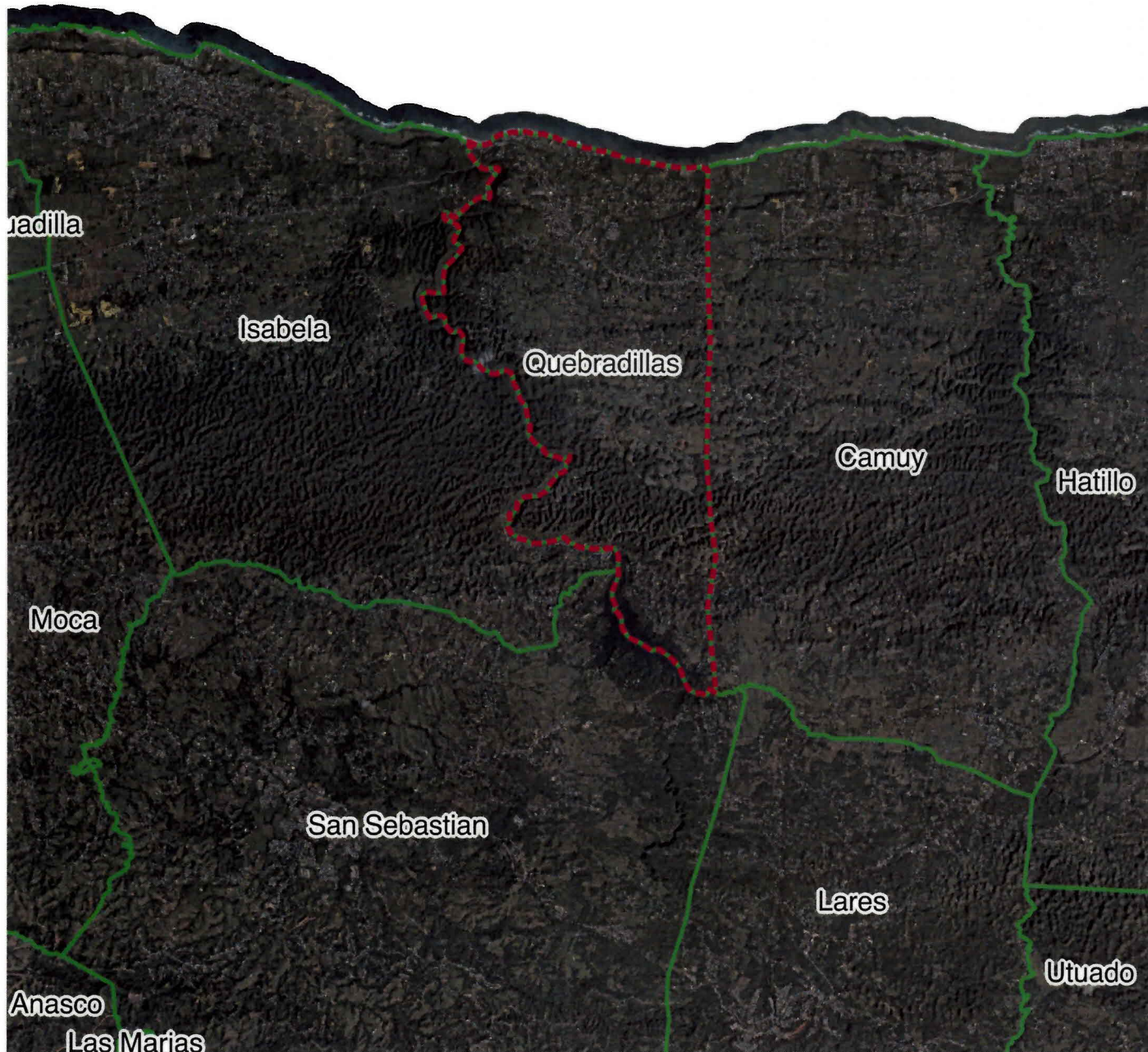
I certify under penalty of law that this document and all attachments were prepared under my direction or supervision in accordance with a system designed to assure that qualified personnel properly gathered and evaluated the information submitted. Based on my inquiry of the person or persons who manage the system, or those persons directly responsible for gathering the information, the information submitted is, to the best of my knowledge and belief, true, accurate, and complete. I am aware that there are significant penalties for submitting false information, including the possibility of fine and imprisonment for knowing violations.

Signature of Mayor/Elected Official: 
Print Name of Mayor/Elected Official: Hon. Heriberto Vélez Vélez
Title: Mayor Date: 26 octubre de 2016





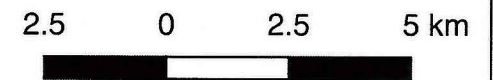
Municipality of Quebradillas

Figure 1. Location Map



Legend

-  Municipality of Quebradillas
 -  Adjacent Municipalities
- 2009-2010 Ortho Photo (PRPB)



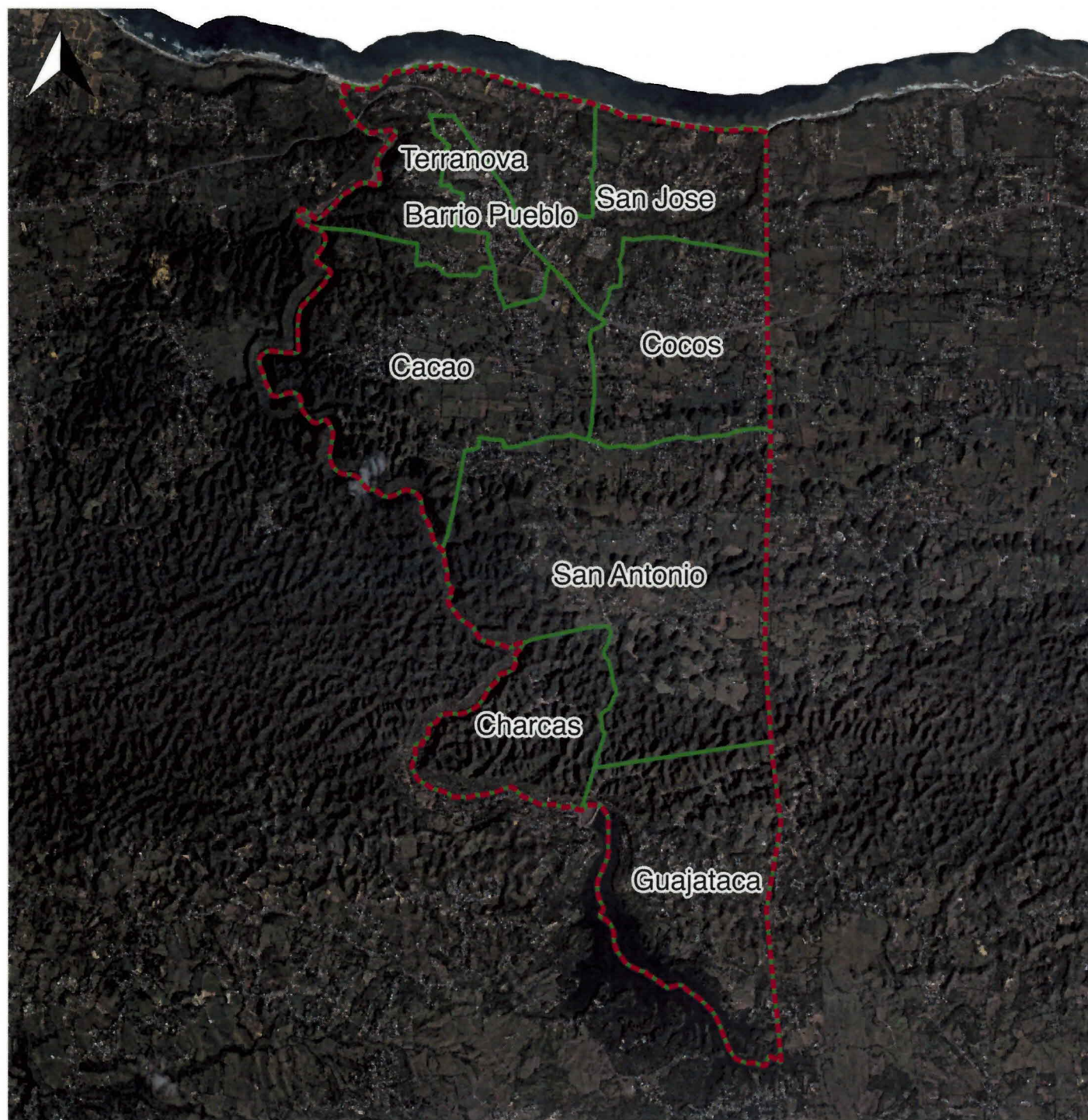
EES Environmental & Ecological Services

www.ees-pr.com




Municipality of Quebradillas

Figure 2. Municipality of Quebradillas - Wards



Legend

 Municipality of Quebradillas

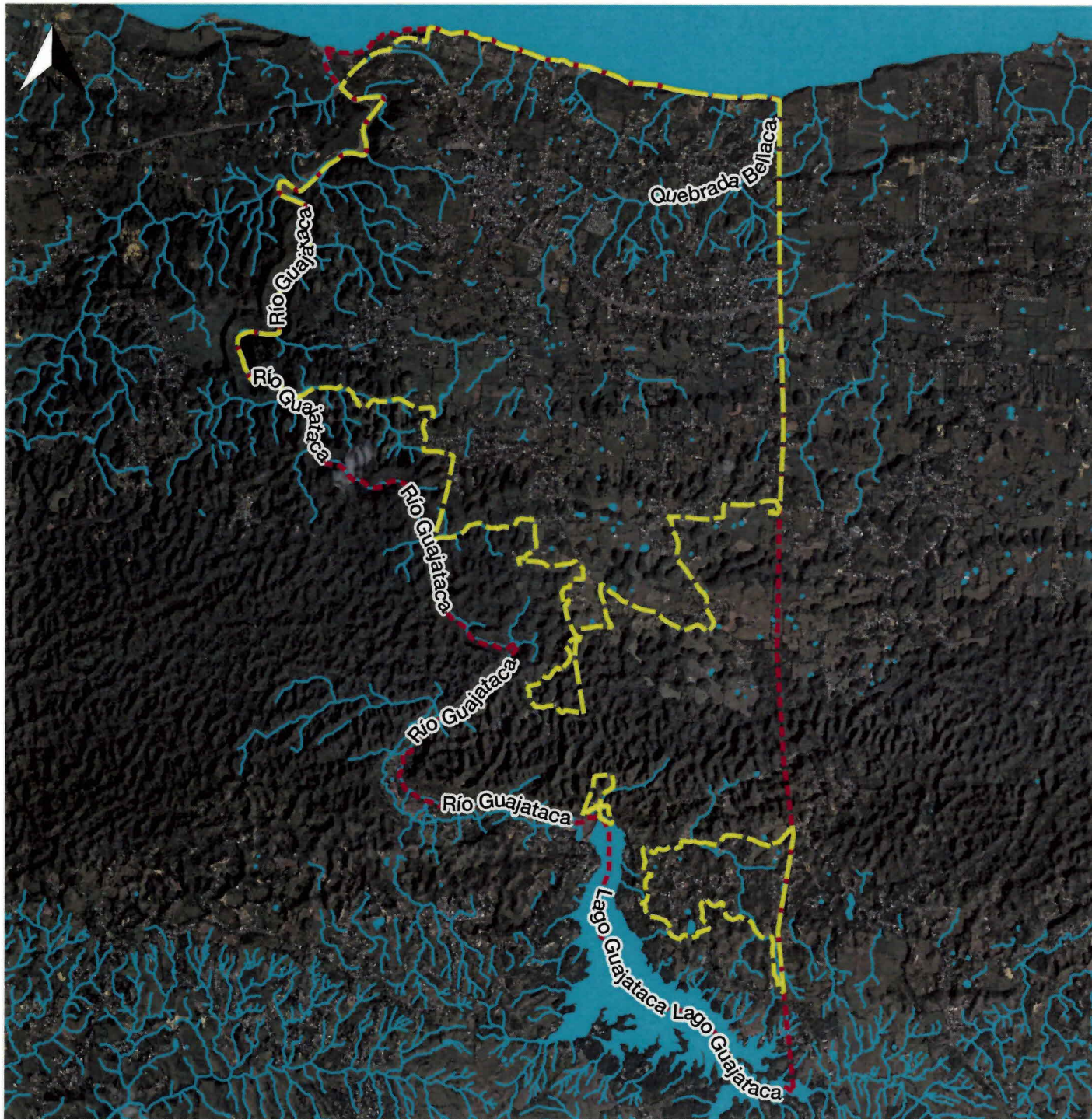
 Wards

2009-2010 Ortho Photo



EES Environmental & Ecological Services





www.ees-pr.com



Municipality of Quebradillas

Figure 3. Municipality of Quebradillas - Urbanized Area

Legend

-  Municipality of Quebradillas
 -  Urbanized Area (UA)*
 -  Rivers and Streams
 -  Waterbodies
- 2009-2010 Ortho Photo

**UA from 2010 US Census Shapefile Data.*



QUEBRADILLAS (1-2)

SCIENTIFIC NAME	COMMON NAME	COMMON NAME SPANISH	GROUP	STATUS	DISTRIBUTION
<i>Accipiter striatus venator</i>	Puerto Rican Sharp-Shinned Hawk	Falcon de Sierra	Bird	E	Rio Abajo State Forest
<i>Adiantum vivesii</i>	No Common Name	No Tiene Nombre Comun	Plant	E	San Antonio Ward
<i>Auerodendron pauciflorum</i>	No Common Name	No Tiene Nombre Comun	Plant	E	Rio Abajo State Forest, Guajataca Gorge
<i>Buxus vahlii</i>	Val's Boxwood	Diablito de Tres Cuernos	Plant	E	Guajataca State Forest
<i>Calyptronoma rivalis</i>	No Common Name	Palma de Manaca	Plant	T	Guajataca River, Cacao Ward, Camp Guajataca
<i>Daphnopsis hellerana</i>	No Common Name	No Tiene Nombre Comun	Plant	E	Guajataca River
<i>Dermochelys coriacea</i>	Leatherback Sea Turtle	Tinglar	Reptile	E, CH	Coastal Zones
<i>Epicrates inornatus</i>	Puerto Rican Boa	Boa Puertorriqueña	Reptile	E	Forested Volcanic and Limestone (Karst) Hills
<i>Eretmochelys imbricata</i>	Hawksbill Sea Turtle	Carey	Reptile	E, CH	Coastal Zones
Continues on Next Page					

Status

E=Endangered

T=Threatened

CH=Critical Habitat

BACK

CONTINUE



QUEBRADILLAS (2-2)

SCIENTIFIC NAME	COMMON NAME	COMMON NAME SPANISH	GROUP	STATUS	DISTRIBUTION
Goetzea elegans	Beautiful Goetzea	Matabuey	Plant	E	Quebrada Bellaca, San Jose Ward, Terranova Ward, Las Talas
Myrcia paganii	No Common Name	No Tiene Nombre Comun	Plant	E	Guajataca Gorge
Ottoschulzia rhodoxylon	No Common Name	Palo de Rosa	Plant	E	Guajataca River
Pelecanus occidentalis	Brown Pelican	Pelicano Pardo	Bird	D, MP	Coastal Zones, No Nesting
Peltophryne lemur	Puerto Rican Crested Toad	Sapo Concho	Amphibi an	T	Northern Karst Region
Peperomia wheeleri	Wheeler's Peperomia	No Tiene Nombre Comun	Plant	E	Guajataca Ward
Schoepfia arenaria	No Common Name	No Tiene Nombre Comun	Plant	T	Guajataca Gorge
Sterna dougallii	Roseate Tern	Palometa	Bird	T	Coastal Areas and Offshore Cays, Nesting
Thelypteris verecunda	No Common Name	No Tiene Nombre Comun	Plant	E	Charcas Ward
Trichechus manatus manatus	Antillean Manatee	Manati Antillano	Mammal	E	Coastal Zones
Zanthoxylum thomasianum	St. Thomas Prickly Ash	No Tiene Nombre Comun	Plant	E	Guajataca Gorge

Status

E=Endangered

T=Threatened

CH=Critical Habitat

D=Delisted due to Recovery

MP= Monitoring Plan

BACK

PREVIOUS

