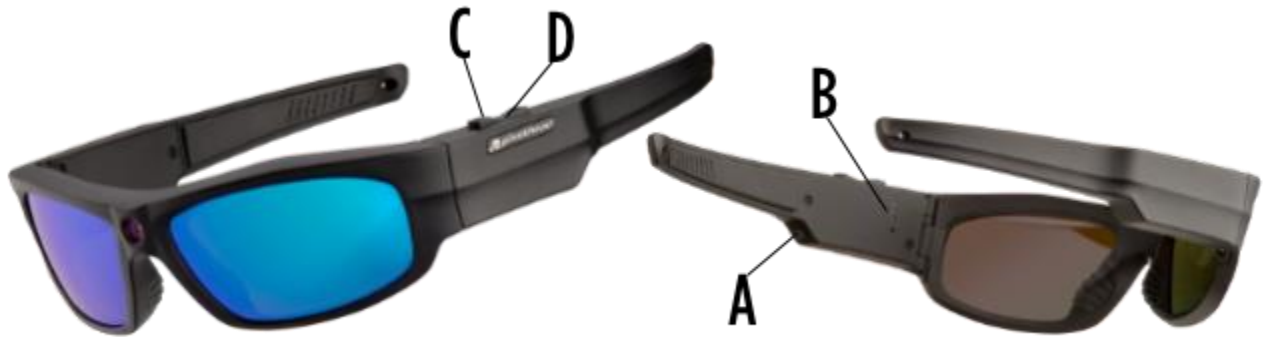


# Pivothead Eyewear Quick Start Guide

Last Updated: Dec 04, 2014 12:19PM MST



## The Basics

### Step 1: Turn on your Pivoheads.

- Locate the power button (A) which is located on the bottom of the left ear piece.
- Press the power button (a short press). That's it! Boom.
- You should now see a **blue** light on the LED status indicator (B). Great success.
- If the **blue** light is not on - try plugging your Pivoheads in - they probably need to be charged.
- To turn off your Pivoheads, just push the same button.

### Step 2: Record a Video.

- Locate the Pivot switch and press the forward part (C)
- You should now see both the **blue** power LED + a blinking **red** LED (B).
- Congrats - you are now recording a video!
- To stop recording simply push the forward portion of the Pivot switch again and make sure the **red** LED stops blinking.
- Oh snap - you've just recorded a video. (hopefully it was a good one).

### Step 3: Take a Picture.

- Locate the Pivot switch and press (short press) the back part (D).
- The **red** LED (B) - will blink once quickly, and once slowly.
- Congrats - you just took an 8 megapixel snapshot!

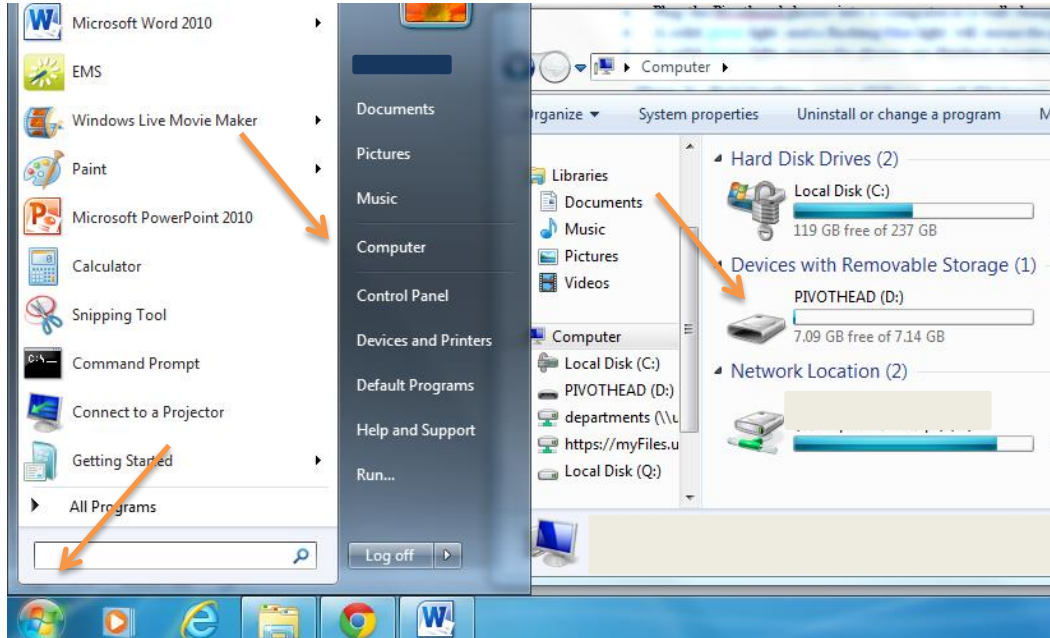


### Step 4: Charging Your Pivothead

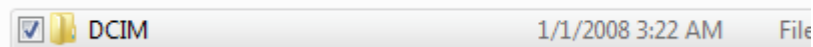
- Plug the Pivothead glasses into a computer or a wall charger using the USB cable found in the case
- A solid **green** light and a flashing **blue** light will mean the glasses are charging.
- A solid **green** light means the glasses are finished charging.

## Step 5: Retrieving your Videos and Pictures

- Plug the Pivothead glasses into a computer using the USB cable and turn on the glasses by holding the power button (A)
- A solid red, green, and blue light will show that the Pivothead is connected
- Now go to start, Computer, and select the Pivothead glasses.



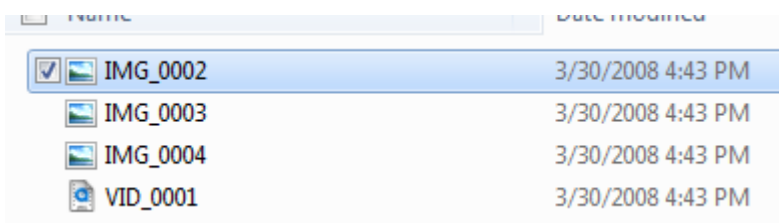
- Double click on DCIM folder



- Double Click on 100HDHFR Folder



- Drag a drop desired pictures and videos into preferred storage location



## General Trouble Shooting

### Other LED Meanings

Sometimes you might see your glasses' LED blinking. Here's what they are trying to tell you.

- If the blue and red light are blinking - your Pivothead's memory is full.
- If the blue light is blinking slowly your battery is low (less than 10%).
- If the blue light is blinking quickly your battery is gone, baby - and your glasses will soon shut off.

<http://support.pivothead.com/customer/portal/articles/1253941-pivothead-eyewear-quick-start-guide>

<http://support.pivothead.com/customer/portal/articles/1253819-how-do-i-charge-my-pivothead->