

BLUNT-LEAVED PONDWEED

Potamogeton obtusifolius

Pondweed Family (Potamogetonaceae)

Habitat: Small shallow lakes and ponds

DISTRIBUTION

Yukon: South and central Yukon; known only from Sheldon Lake and the Dezadeash River

North America: Alaska, Canada, northern States.

World: Amphi-Atlantic

CONSERVATION RANK

Global rank: Secure (G5)

Canadian rank: Apparently Secure to Secure (N4N5)

Yukon rank: Critically Imperilled to Vulnerable (S1S3)

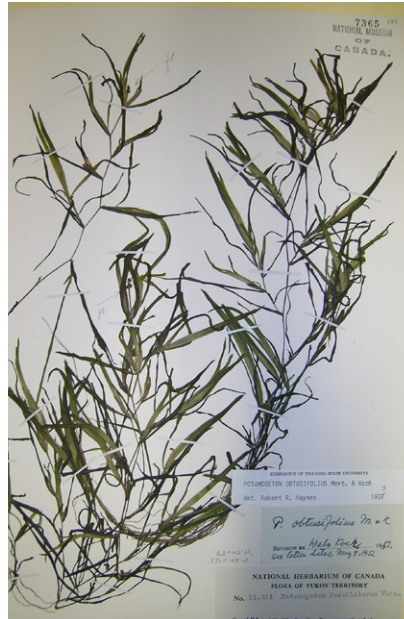
Distinguishing features: *Potamogeton obtusifolius* is separated from similar *P. friesii* by distinctive rounded leaf tip, slightly zigzag stem, and stipules not connate.



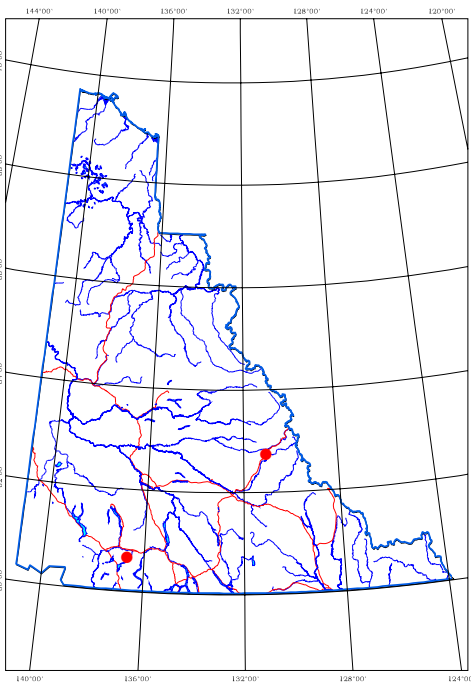
J. Fenneman



© Province of British Columbia



J. Fenneman



B. Bennett

For more information, contact the Yukon Conservation Data Centre at 867-667-3684 or yukoncdc@gov.yk.ca.

