



Know the enemy! The **C**offee **B**erry **B**orer and similar New Guinean bark beetles



Andrew J. Johnson and Jiri Hulcr. University of Florida

aij@ufl.edu

hulcr@ufl.edu

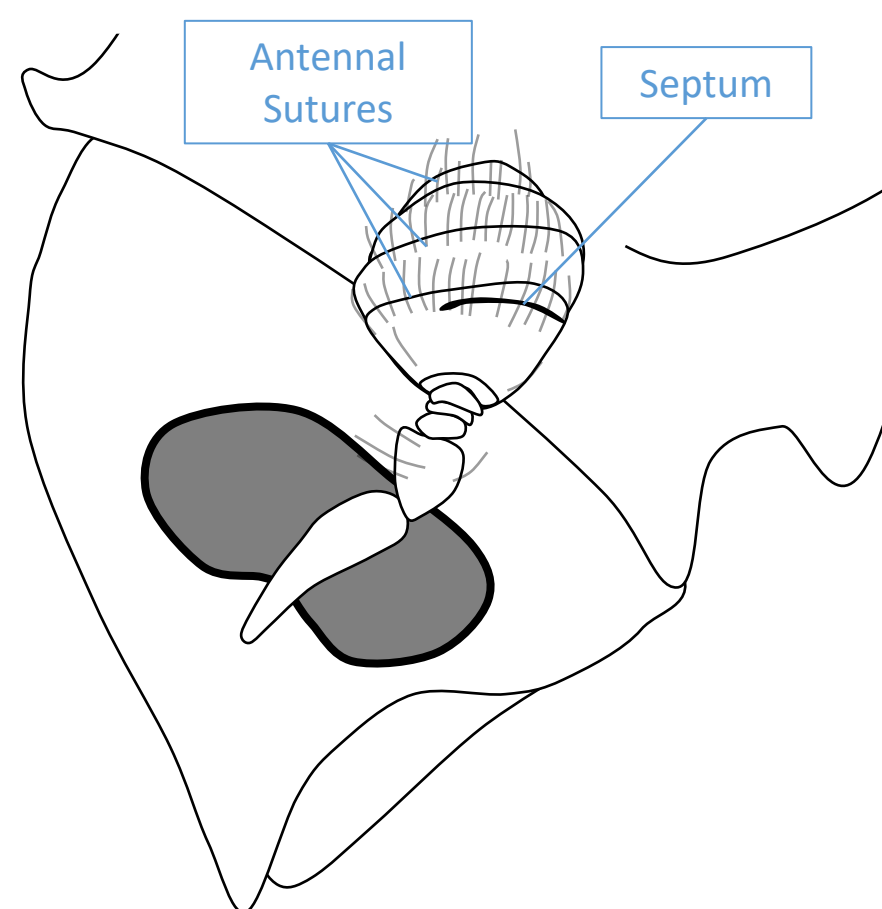
[Updated 2020-Oct.-08]

Introduction

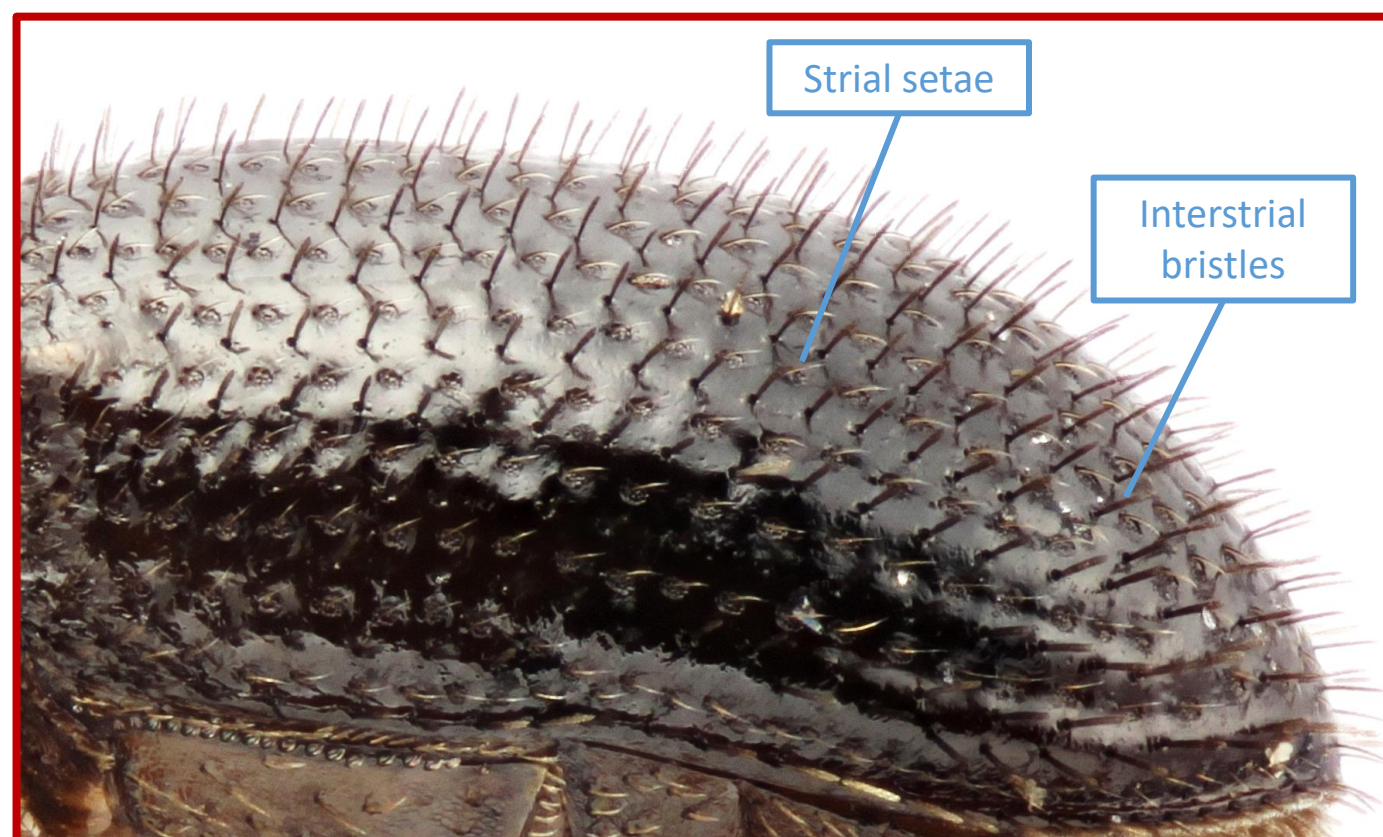
Correct Identification of the coffee berry borer (CBB) in PNG is an essential part of preventing it establishing and harming the coffee industry. There are, however, many similar and mostly harmless bark beetles already present in PNG which will fly into CBB traps. This poster will show the diversity of similar looking beetles and guide the identification of these to their genus.

Hypothenemus

- Most species are harmless and live in twigs, vines and branches.
- Some other species are found in old coffee berries
- Eye emarginated.
- Antennal club with sutures and septum (dark line).
- Most species with flattened setae on the elytra (not CBB)



The Coffee Berry Borer

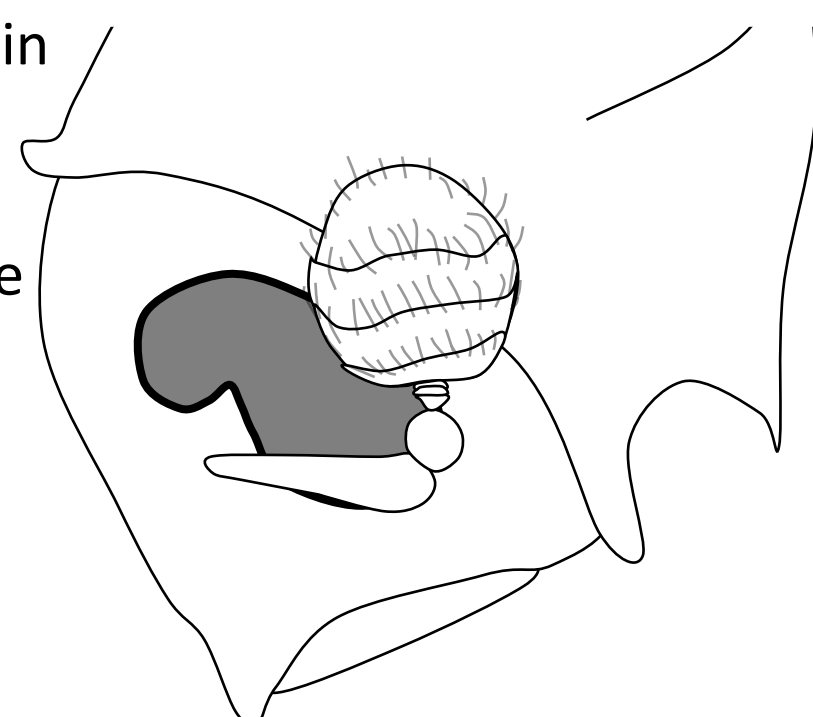


- *Hypothenemus hampei* Ferrari
- 1.4mm to 1.8mm
- All setae on elytra in neat rows.
- Interstrial bristles (larger setae on elytra) straight and not widened at tip.
- Present in West Papua, not yet in PNG

Photo: Jiri Hulcr

Cryphalus

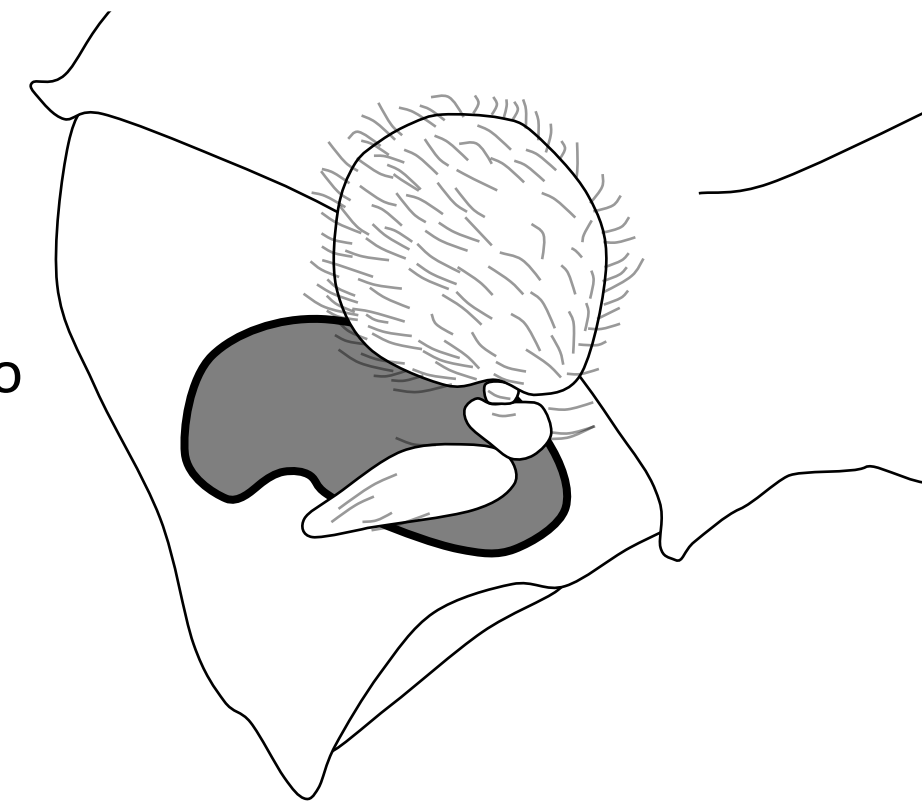
- Common and very diverse in PNG
- Eye emarginated
- Antennae with three to five funicle segments
- Many were previously classified under *Hypocryphalus* and *Margadillius*
- *Cryphalus bicolor* looks very similar to CBB



*= species occasionally found on coffee berries

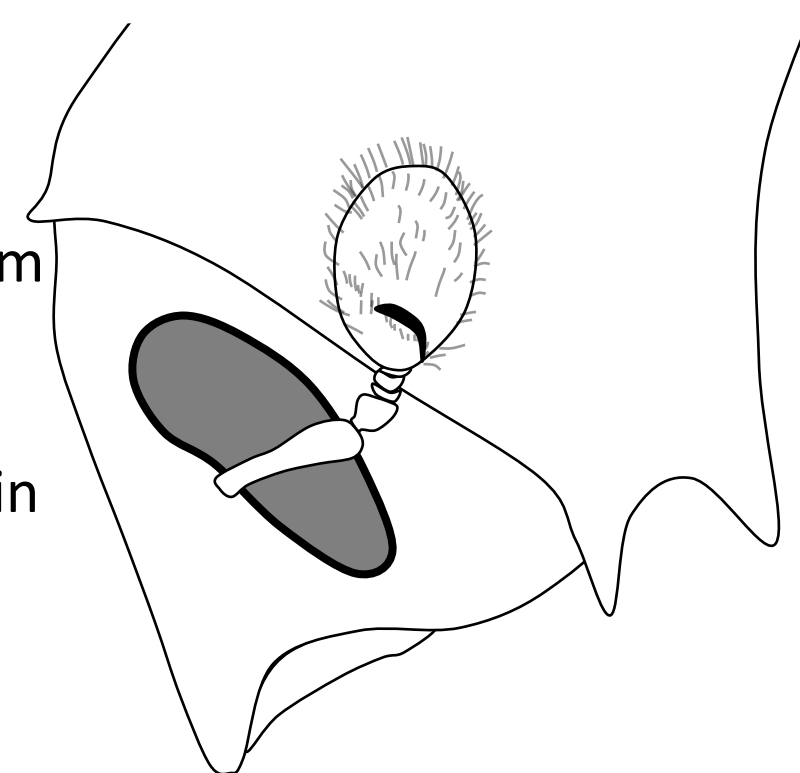
Cosmoderes

- Common in vines
- Eye emarginated
- Antennae with only two funicle segments
- Large antennal club without sutures



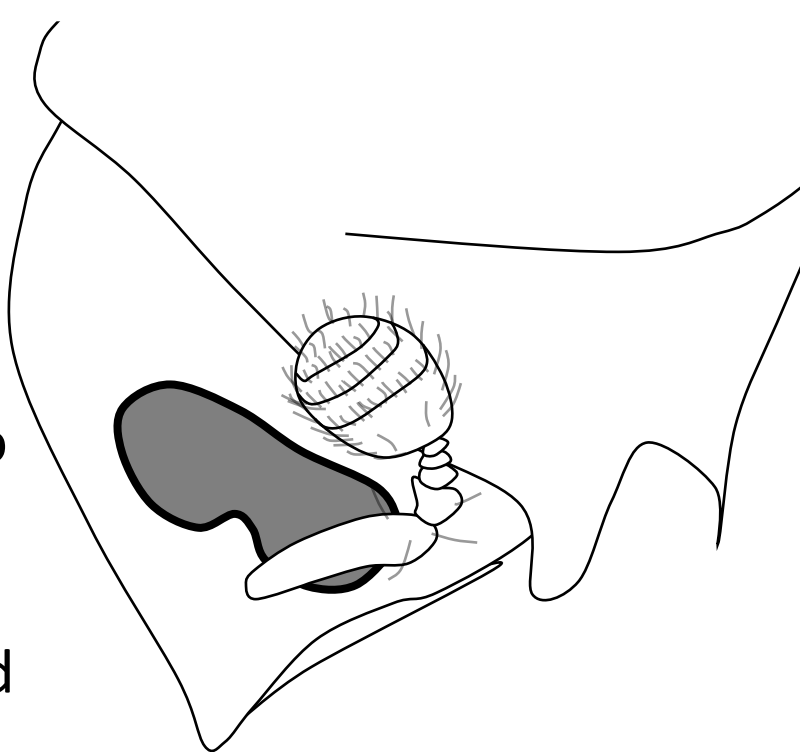
Eidophelus

- Very diverse in New Guinea
- Eye entire and long
- Antennal club with septum (dark line) but without sutures.
- Many species previously in the genera *Scolytogenes* and *Ptilopodius*. (now synonyms)



Coccotrypes

- Very diverse in New Guinea, living in seeds, under bark, large leaves, etc.
- Eye strongly emarginated
- Antennae with sutures, no septum
- *Coccotrypes carpophagus* of a similar size, shape and color as CBB, and is sometimes recorded in coffee seeds



Xylosandrus

- Farms fungus in twigs and branches.
- Occasionally found in coffee berries.
- Large head and pronotum
- Eye Emarginated
- Antennae truncate (Like half a sphere)
- Procoxae separated

