

Online Photographic Appendix to the paper

# **Long-term monitoring of seed dispersal by Asian elephants in a Sundaland rainforest**

*By*

*Wei Harn Tan, Adeline Hii, Alicia Solana-Mena, Ee Phin Wong, Vivienne P.W. Loke, Ange S. L. Tan, Anders Kromann-Clausen, Ning Hii, Param bin Pura, Muhamad Tauhid bin Tunil, Sudin A/L Din, Chiew Foan Chin, and Ahimsa Campos-Arceiz*

(Numbers associated with species names in this file correspond to Table 1 in the paper)

# 1. *Bouea* sp.1



A) Fruit with seed; B) Seedling germinated from seed.

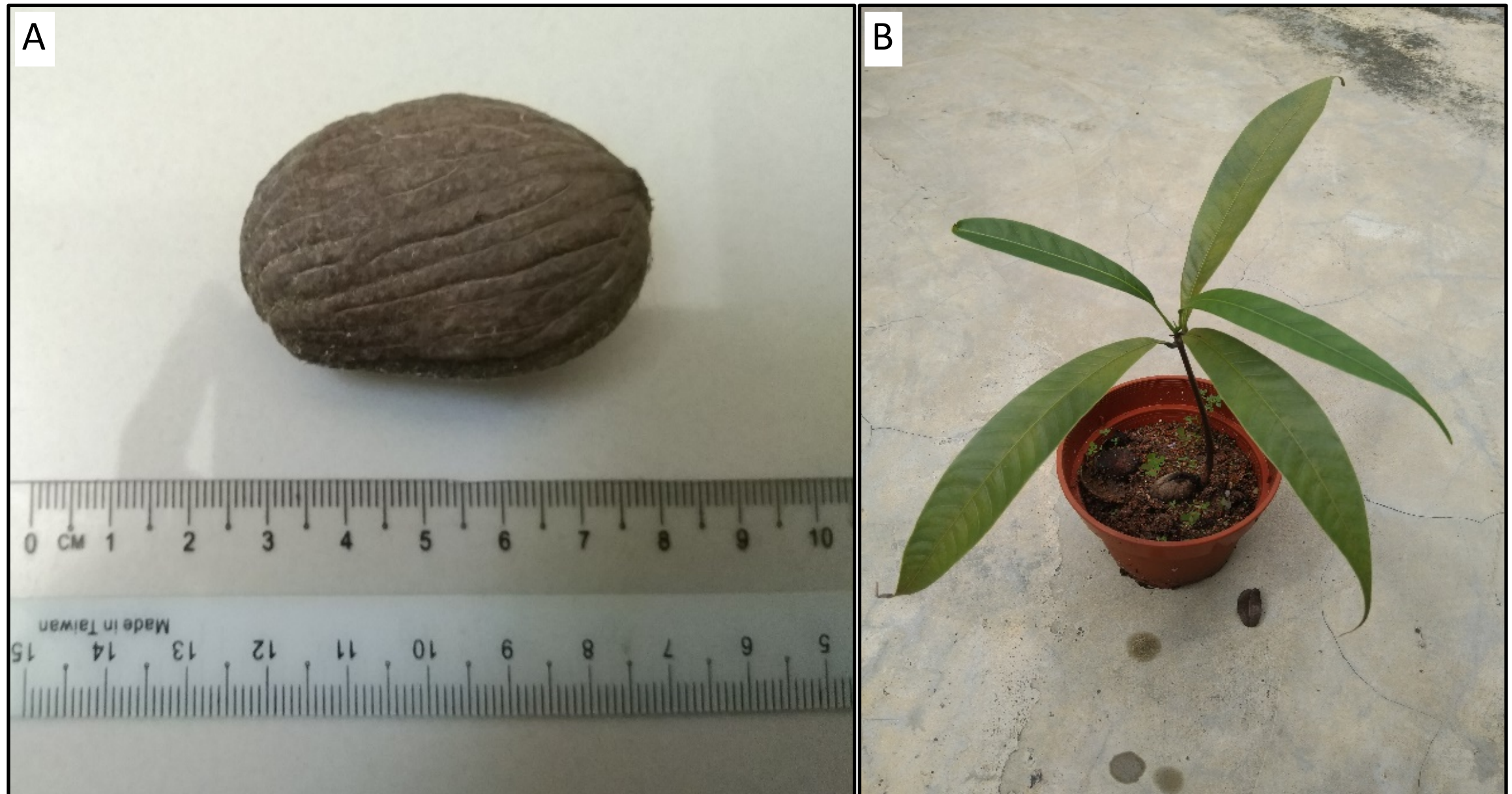


## 2. *Dracontomelon dao*



Seeds.

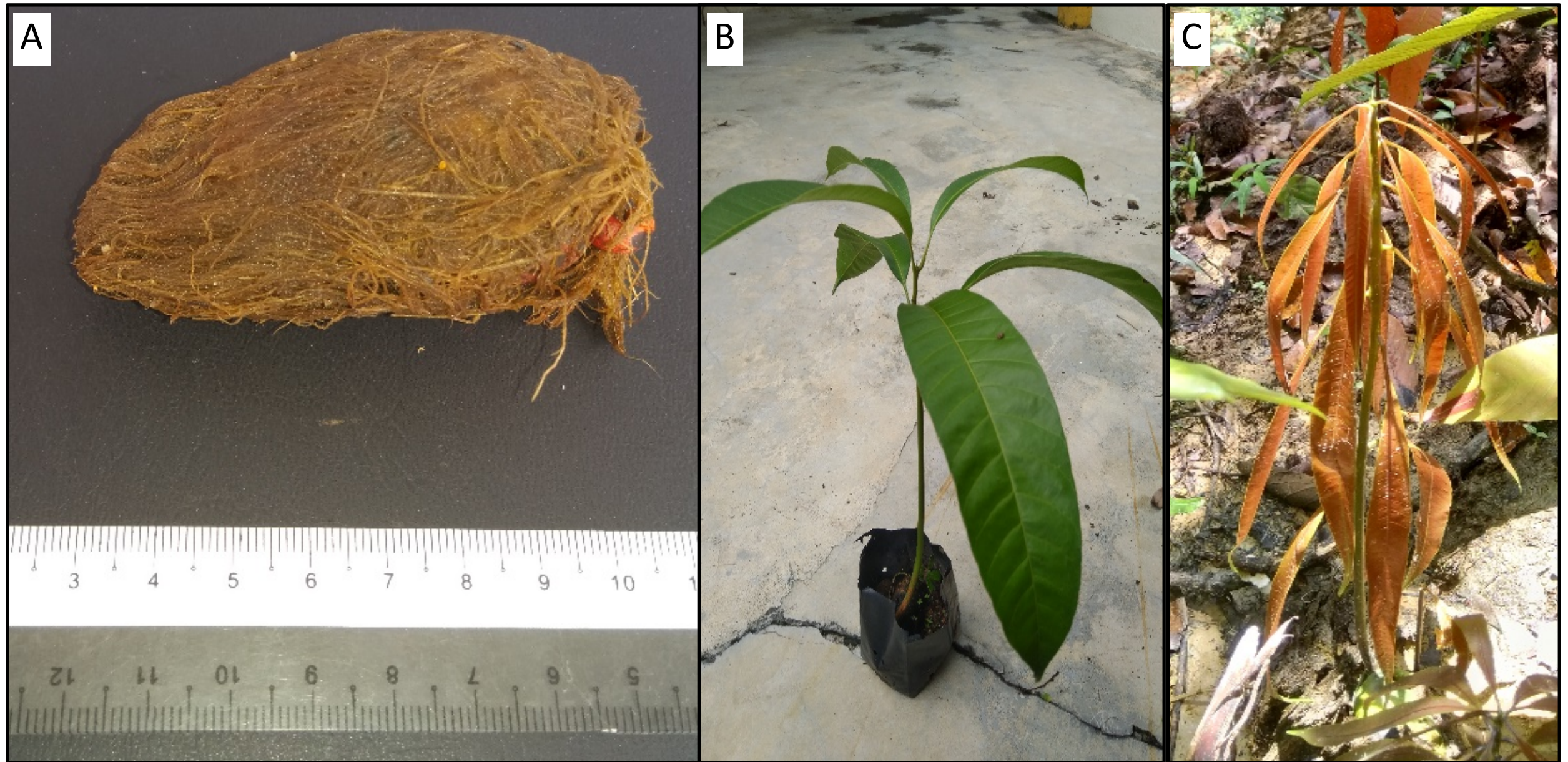
### 3. *Mangifera maingayi*



A) Seed; B) Seedling germinated from dung.



## 4 & 5. *Mangifera* spp.



A) *Mangifera* sp seed; B) *M. foetida* seedling; C) *M. macrocarpa* seedling.



## 6. *Monocarpia marginalis*



Seeds.



## 7. *Mezzetia* sp.1



Seeds.

## 8. *Platymitra macrocarpa*



A) Seed; B) Fruit fragment with seeds.



## 10. Annonaceae sp.2



A) Seed; B) Seedlings.

# 11. *Willughbeia* sp.1



Seed.



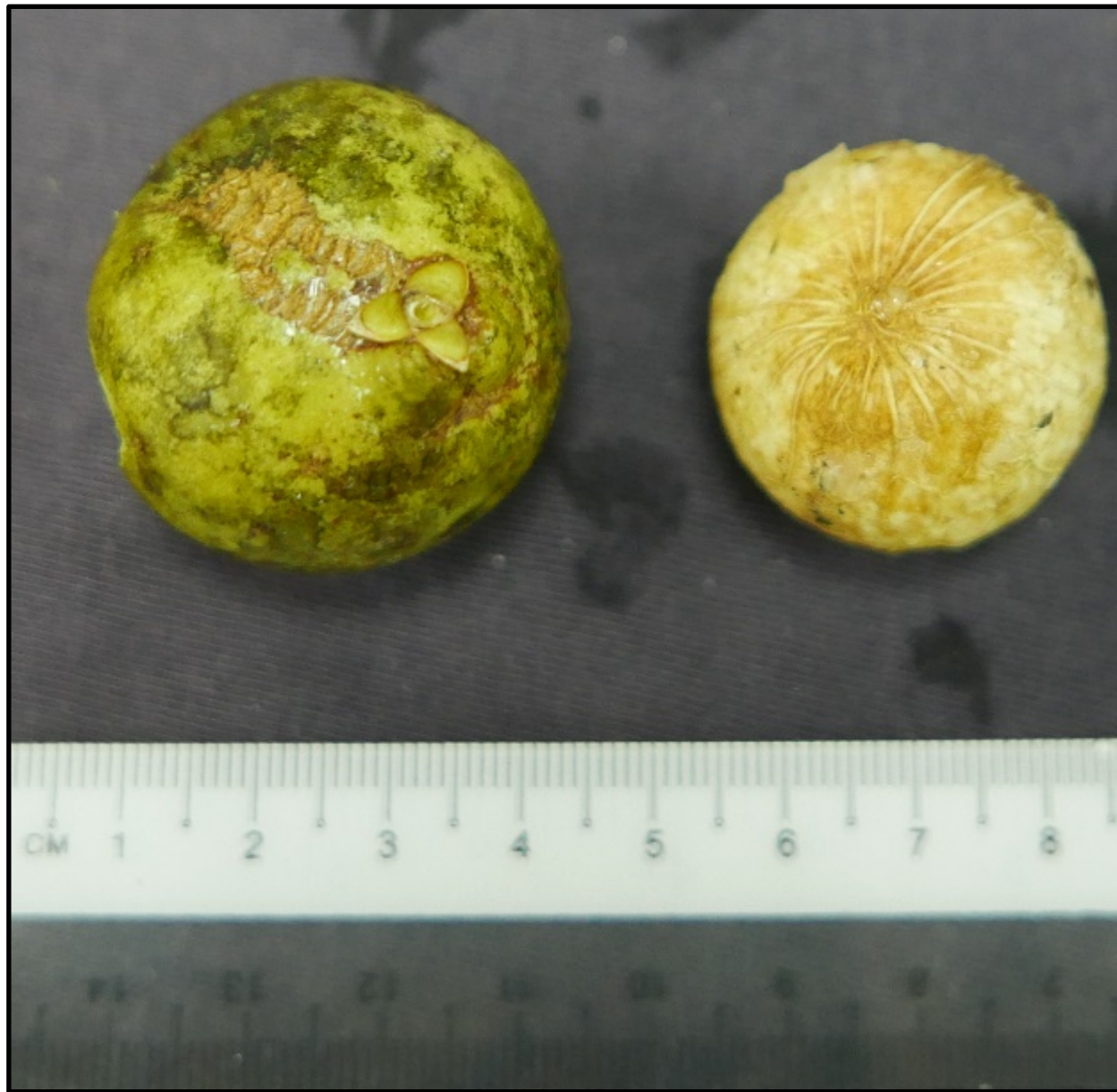
## 12. *Borassodendron machadonis*



Seed in elephant dung.



# 13. *Orania sylvicola*



Fruit and Seed.



# 14. *Canarium littorale*



A) Seed; B) Kernel extracted.



# 15. *Callophyllum macrocarpum*



A) Seed; B) Fresh fruit; C) Fresh fruit with seed exposed.



## 16. *Parinari oblongifolia*



Seed.

## 17. *Parinari* sp.1



Seeds.



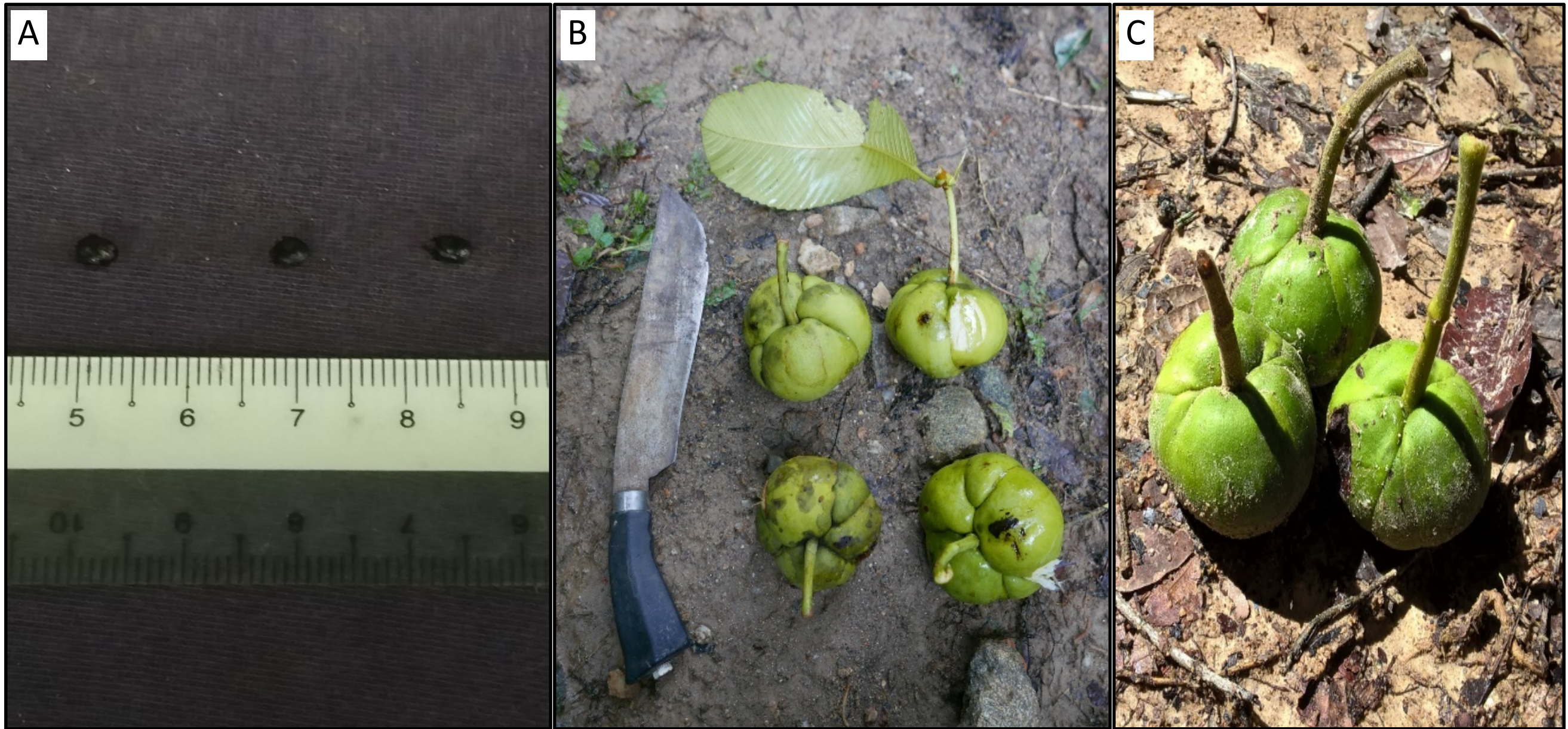
## 18. *Garcinia* sp.1



Seed.



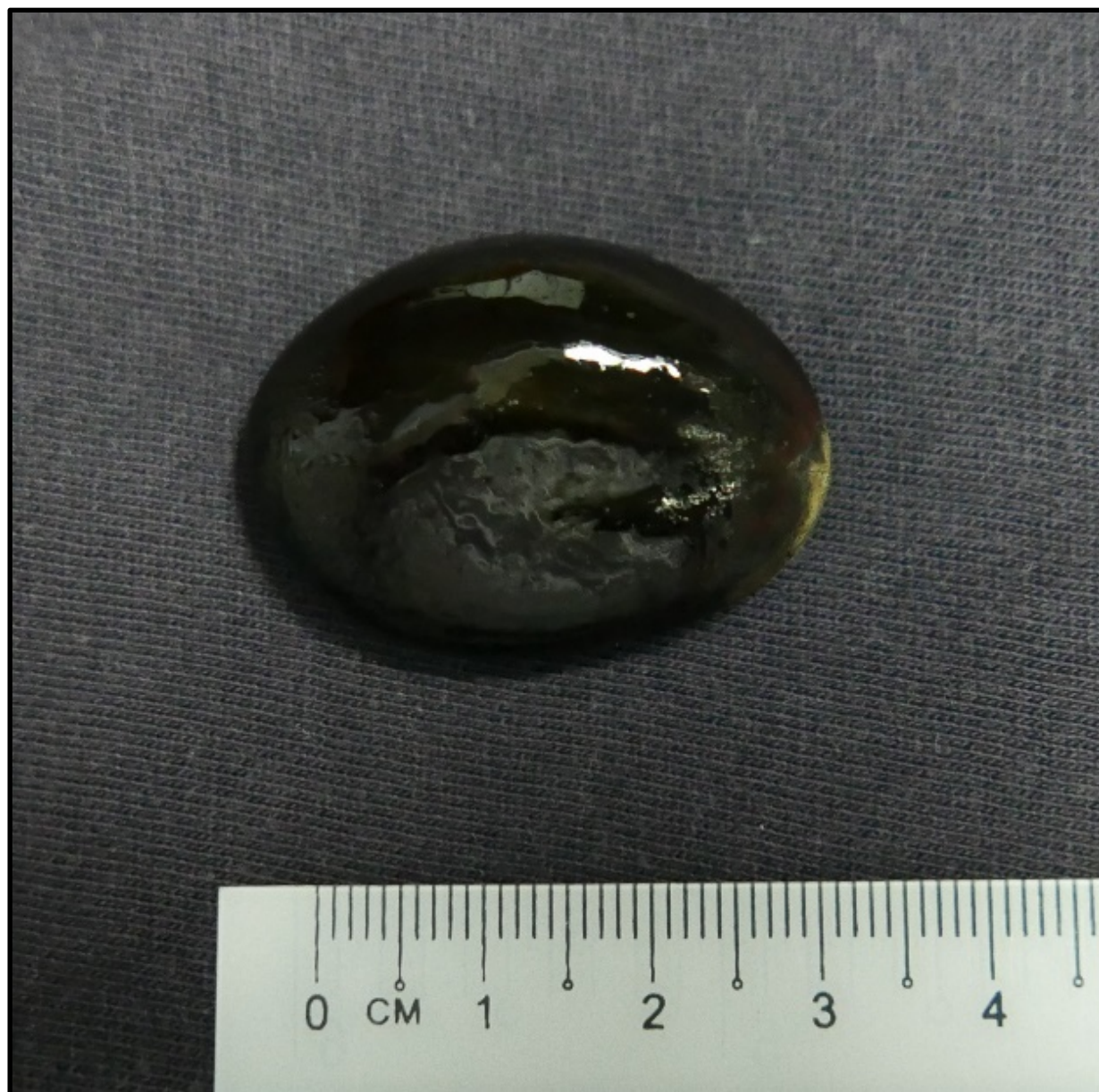
# 19-20. *Dillenia* spp.



A) Seed; B) Fruits of *Dillenia indica*; C) Fruits of *Dillenia reticulata*.

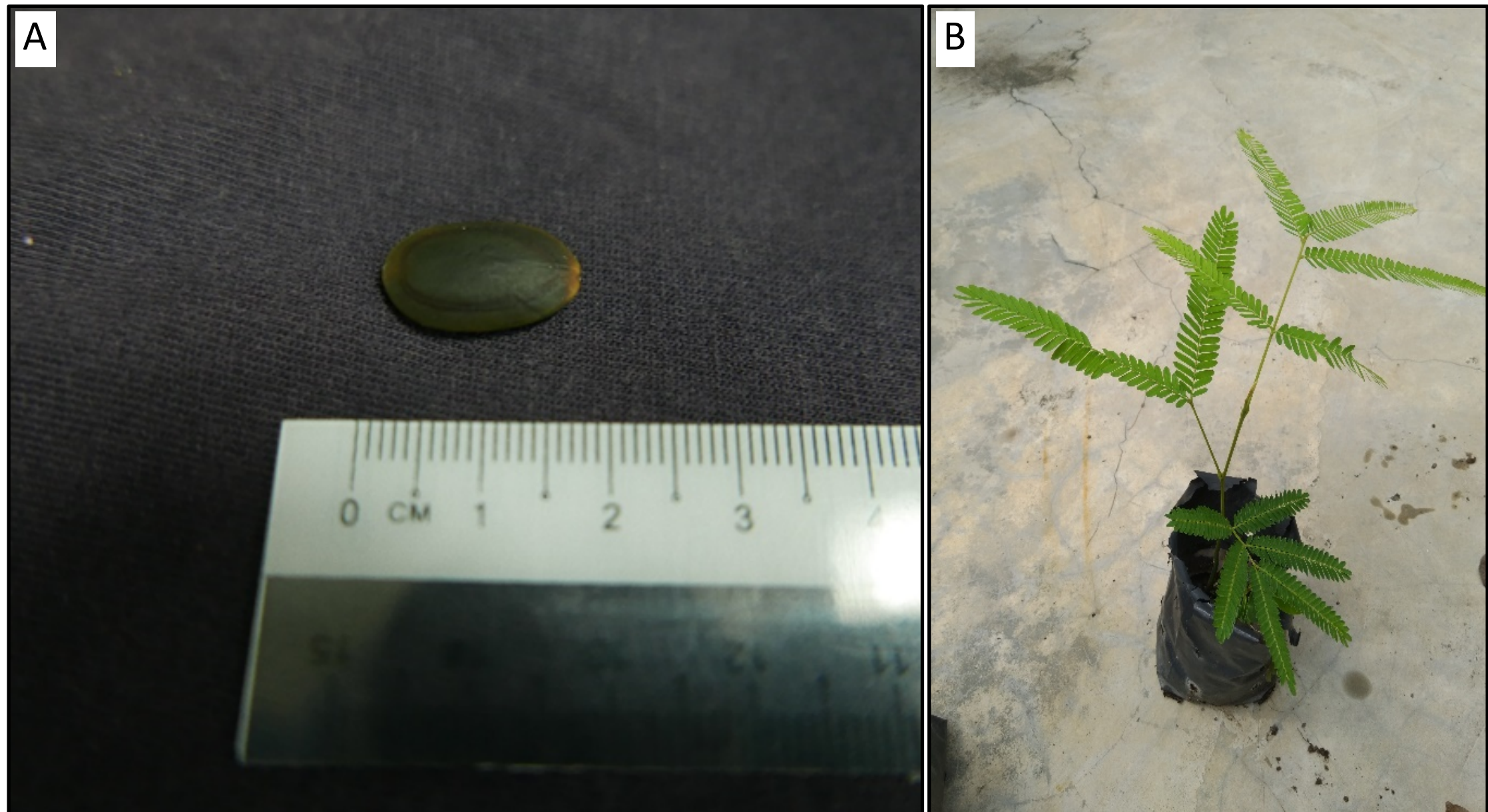


## 21. *Intsia palembanica*



Seed.

## 22. *Parkia timoriana*



A) Seed; B) Seedling.



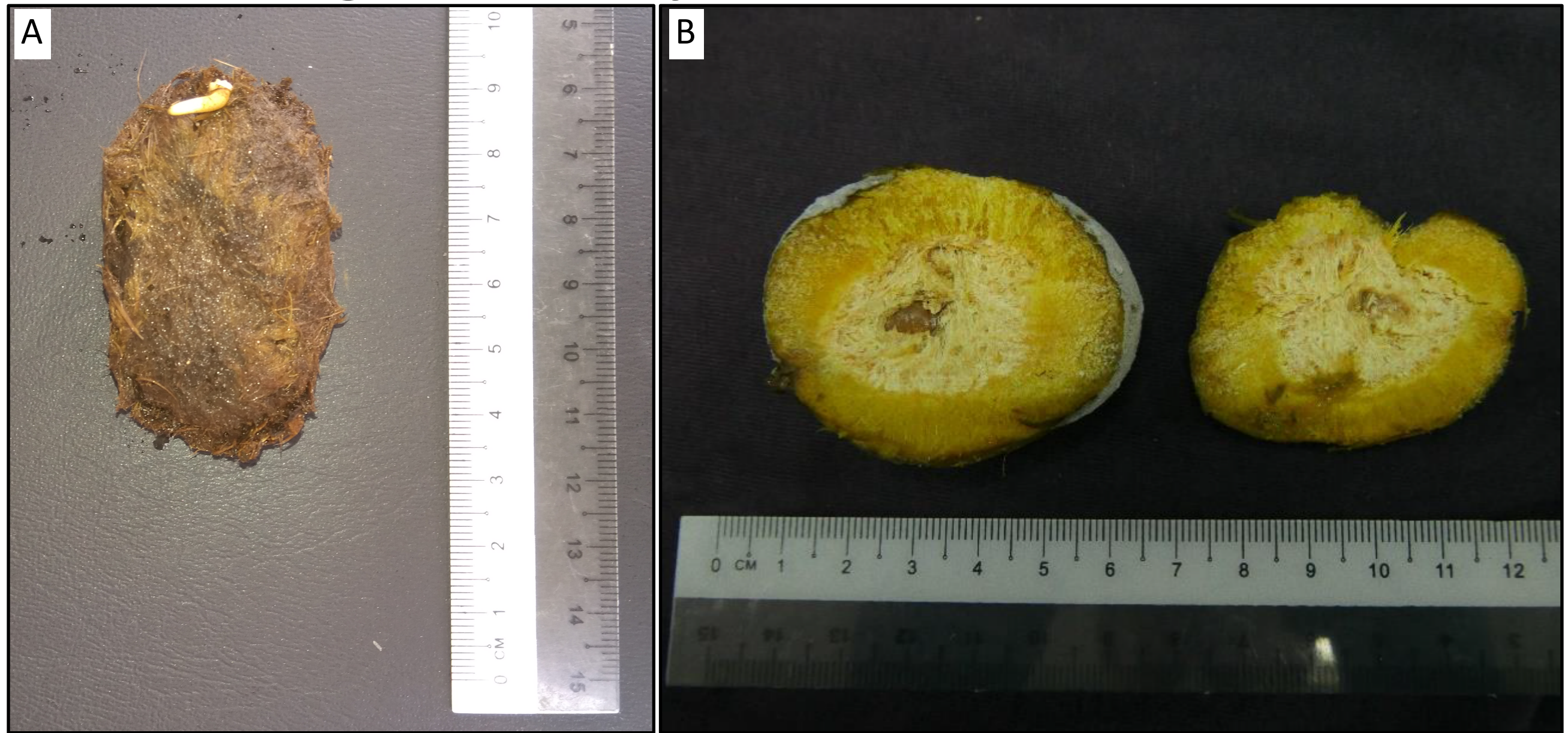
## 23. *Lithocarpus kuntsleri*



Acorns.



## 24. *Irvingia malayana*



A) Seed; B) Halved fruit.

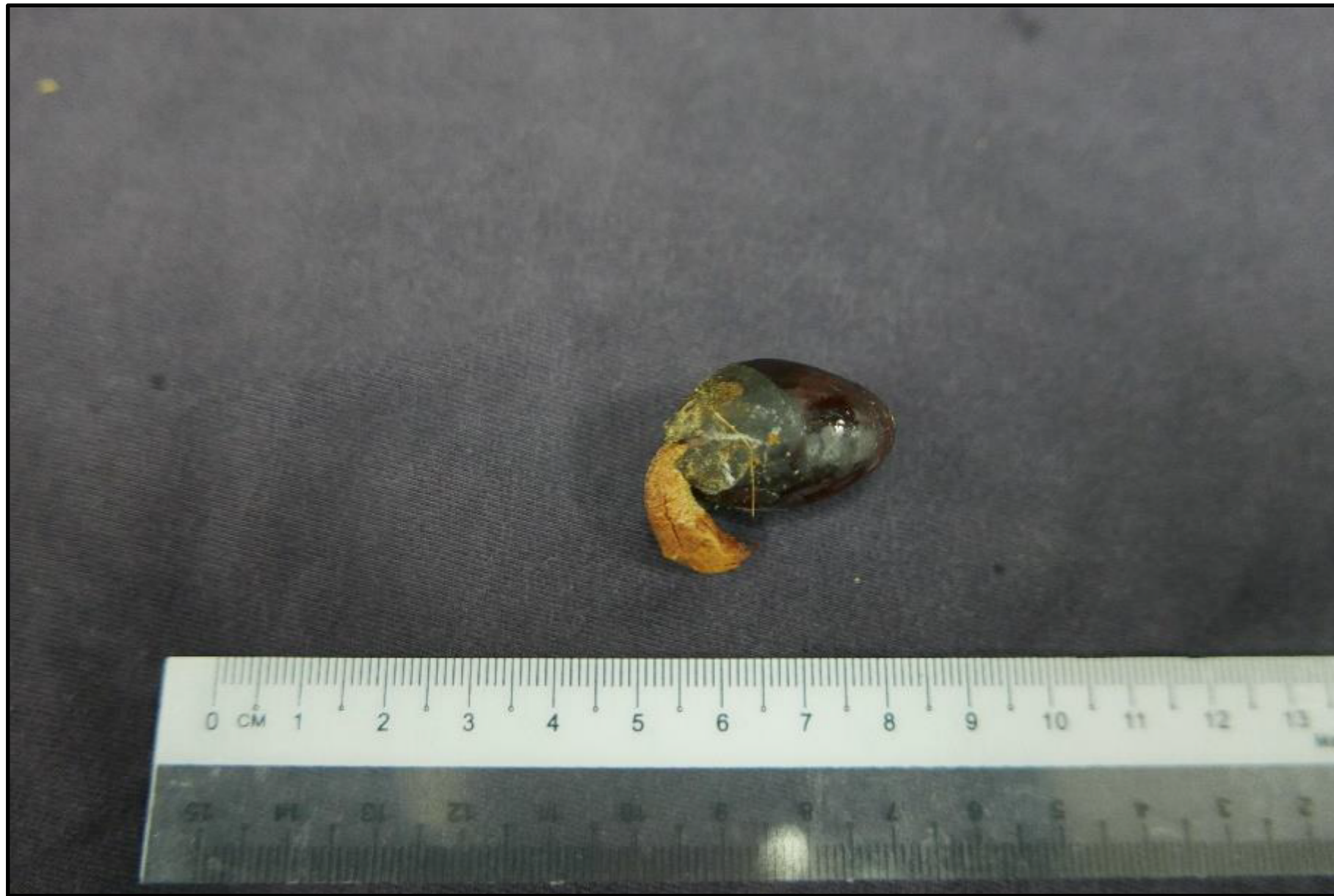


## 25. *Strynos* sp.1



Seed.

## 26. *Durio* sp.1



Germinated seed.



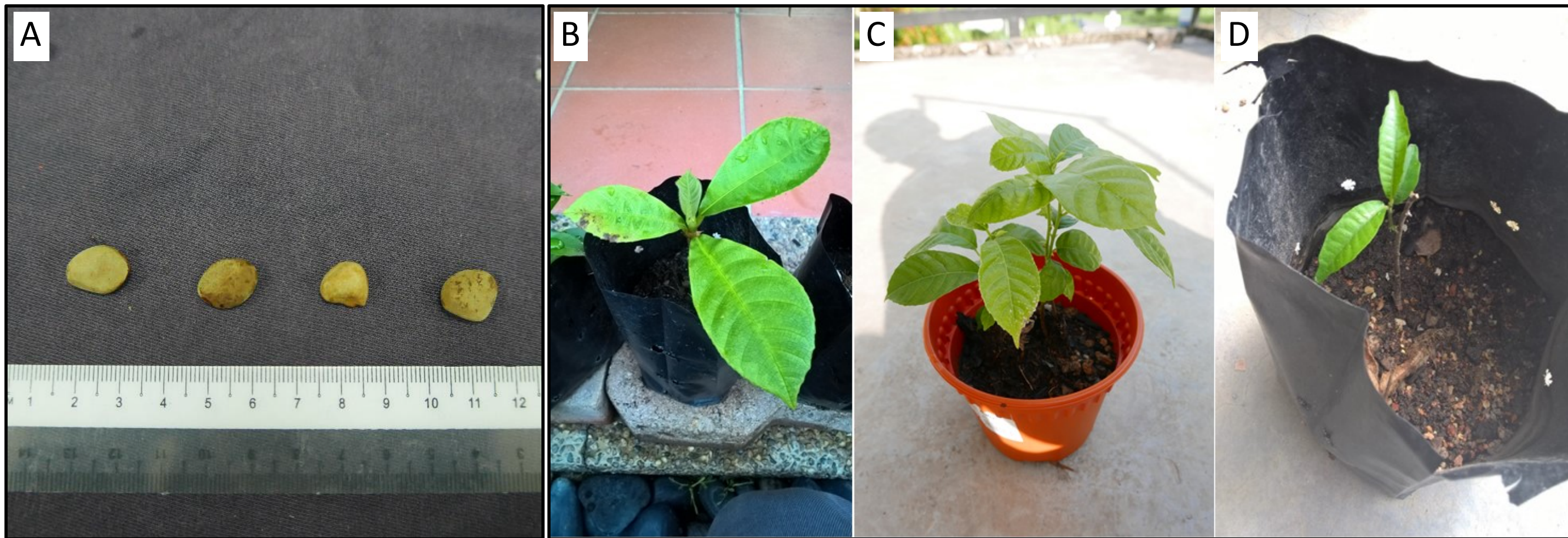
## 27. *Sandoricum koetjape*



Seedling.



## 28-30. *Artocarpus* spp.



A) Seeds; B) *A. elatitcus* seedling; C) *A. cf anisophyllus* seedling; D) *A. rigidus* seedling.



### 31. *Artocarpus lanceifolius*



Seed.

### 33. *Syzygium* sp.1



Fruit.



## 34. *Musa* sp.1



Seedling.

## 35. *Baccaurea* sp.1



Fruits and seeds.



## 36. *Xanthophyllum* sp.1



A) Seed; B) Seedling.

## 37. *Gardenia* sp.1



Fruit.



## 37. *Nephelium* sp.1



Seedling growing in dung.

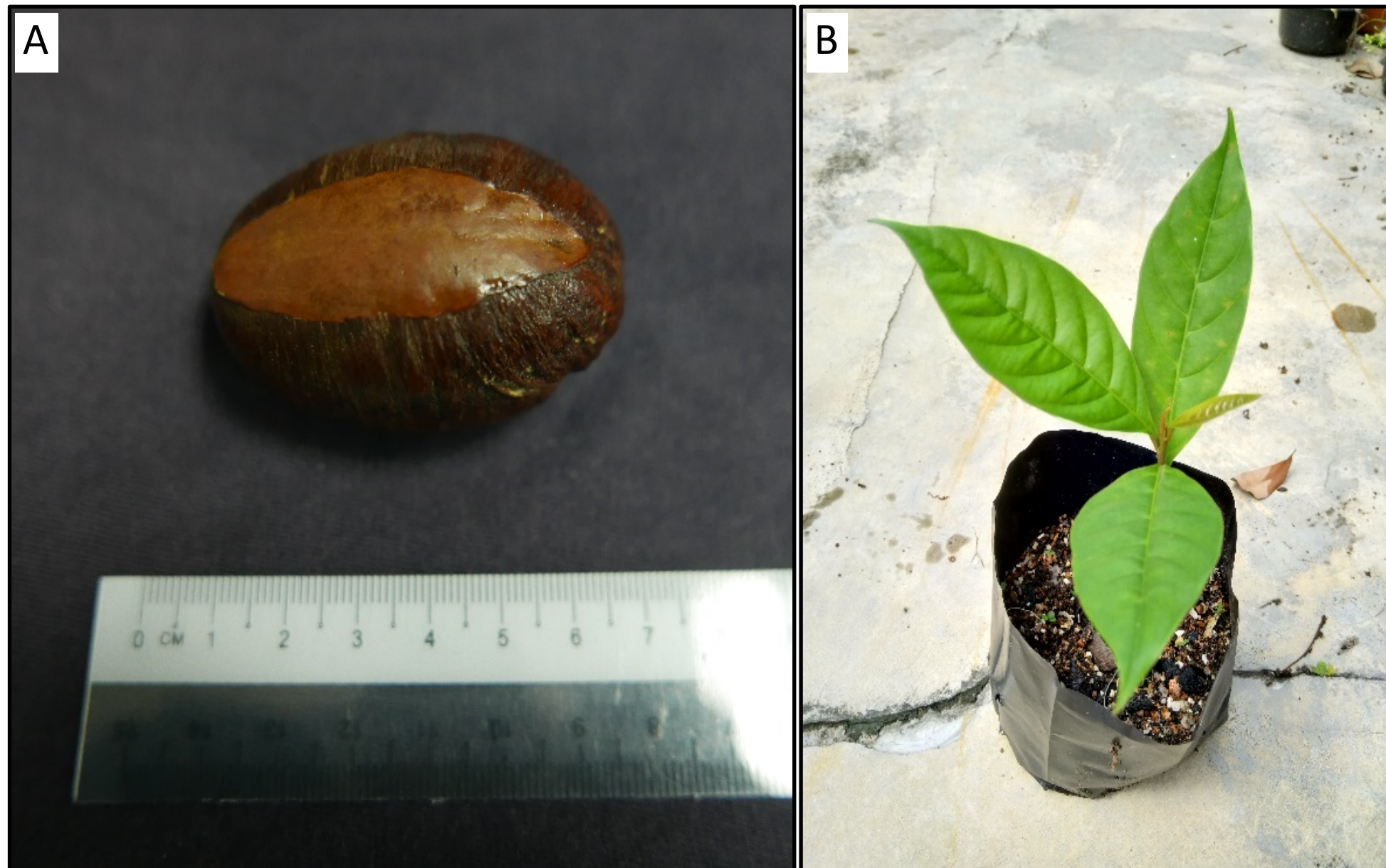
## 39. *Chrysophyllum roxburghii*



Seed.



## 40. *Diploknema* sp.1



A) Seed; B) Seedling.

# 41. Sapotaceae sp.1



Seed.



## 42. *Styrax* sp.1



Fruits.

## 44. *Etlingera fulgens*



Berry from the aggregate.



## 45. *Zingiber* sp.1



Seeds.

## 46. Unknown sp.1



Seedling.



## 47. Unknown sp. 2



Seedling

## 48. Unknown sp.3



A) Crushed fruit; B) Seeds.