

PESTS OF FLOWERS



Pests of Anthurium

Pests of Gerbera

Pests of Lily

Pests of Orchids

Pests of Carnation

Pests of Gladiolus

Pests of Neerium

Pests of Rose

Pests of Chrysanthemum

Pests of Jasmine

Pests of Croton

Pests of Tube rose

Pest of Anthurium



Aphid: *Myzus circumflexus*



Aphidius colemani



Adalia bipunctata

Thrips: *Chaetanaphothrips orchidii*



Whitefly: *Bemisia tabaci*, *Aleurotulus anthuricola*



Red spider mite: *Tetranychus cinnabarinus*



Adult

Pest of Gerbera



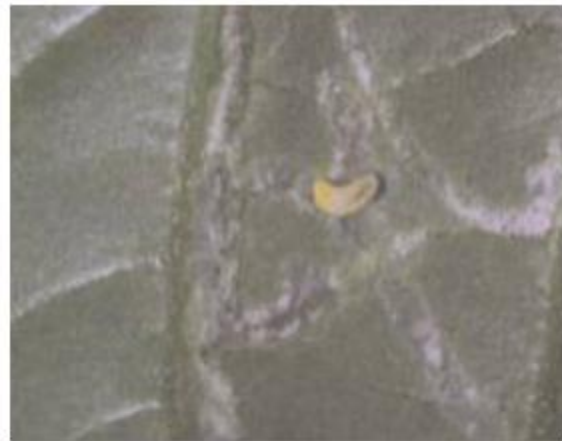
Greenhouse whitefly: *Trialeurodes vaporariorum*



Leafminers: *Liriomyza trifolii* , *L. soncho*



Egg



Larva



Pupa

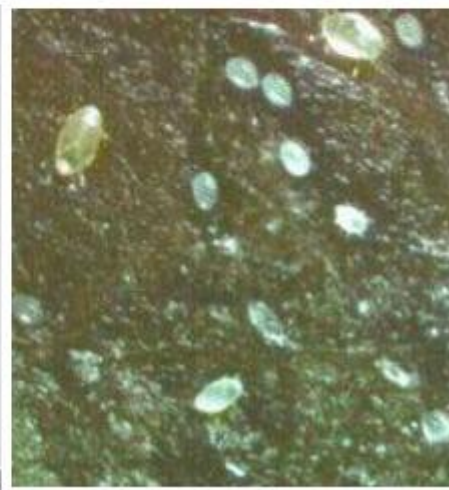
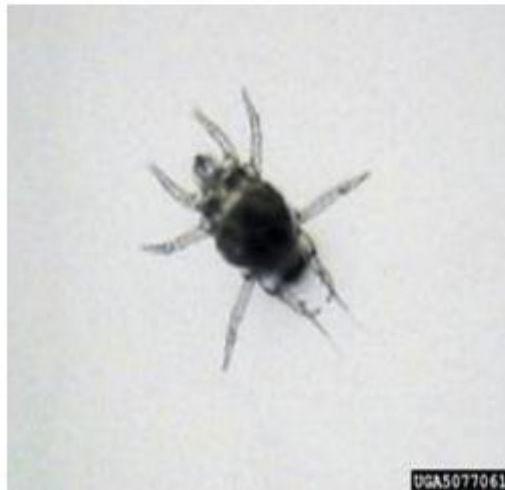


Adult

**Mites: *Polyphagotarsonemus latus*,
*Steneotarsonemus pallidus***



Downward curling



Nymphs and adult of yellow mite

Aphid: *Myzus persicae* , *Aphis fabae*

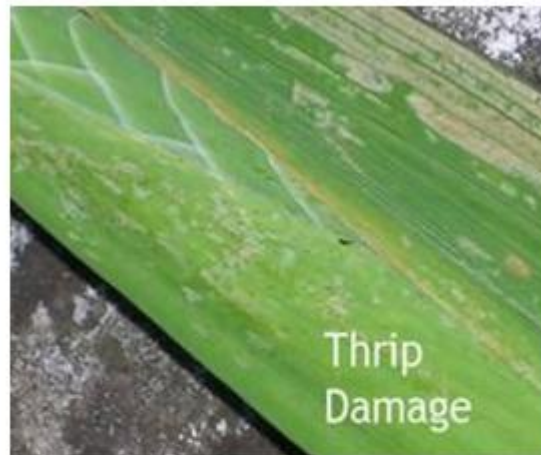


Green peach aphids, *Myzus persicae*

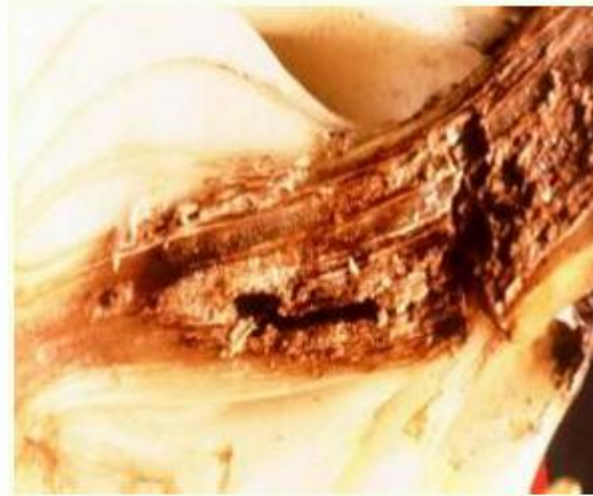
Pest of Lily



Thrips: *Thrips simplex*



Lily bulb mite: *Rhizoglyphus echinopus*



Green peach aphid: *Myzus persicae*



Colony of aphids



leaf curling



Tulip bulb aphid: *Dysaphis tulipae*



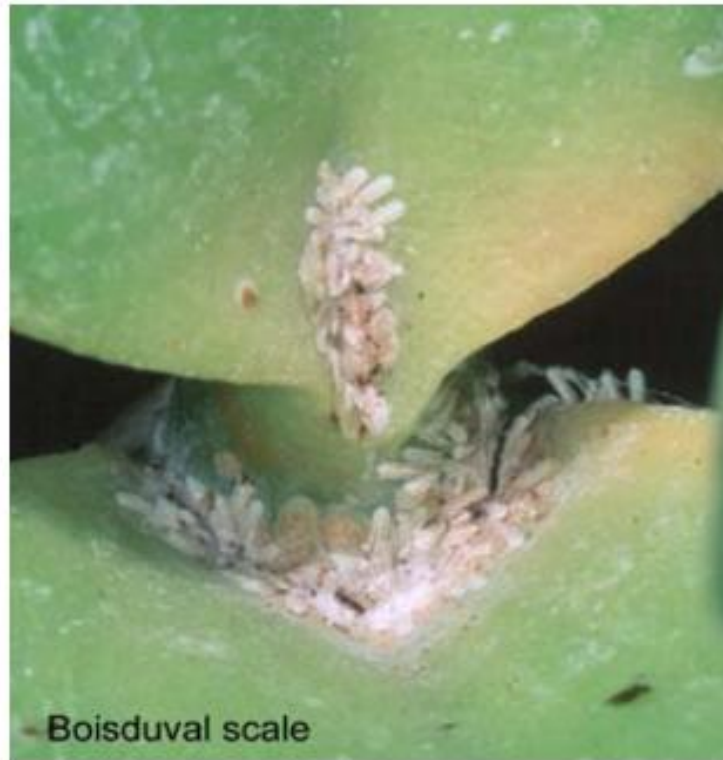
Leaf caterpillar: *Polytela gloriosa*



Pest of Orchids



Scales: *Diaspis boisduvali*, *Aspidiotus destructor*



Mites: *Tetranychus urticae*, *Brevipalpus australis*, *B. cauliformicus*



Adult



White specks on leaves

Giant African Snail - *Achatina fulica*



Pest of Carnation



Red spider mite: *Tetranychus urticae*, *T. cinnabarinus*



Adult, Red spider mite

Aphids: *Aphis gossypii*



Adult - Aphid

Carnation tortrix moth: *Tortrix pronubata*



Larva



Adult

Carnation fly: *Hylemya briennescens*



Pest of Gladiolus



Honey suckle thrips: *Thrips flavus*



Mirid bug: *Lygus lineolaris*



Adult Mirid bug, *Lygus lineolaris*

Pest of Neerium

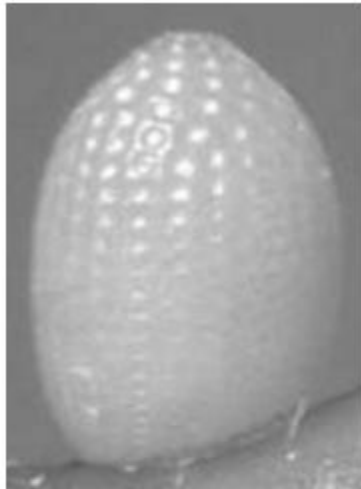


Sphingid caterpillar: *Deilephila nerii*





Common Indian Crow butterfly: *Euploea core*



Egg



Larva



Pupa



Adult

Pest of Rose



Rose aphid: *Macrosiphum rosaeformis* D., *M. rosae*



Aphids - Rose Bud



Premature bud



Infested leaves



Adult

Thrips: Grape thrips: *Rhipiphorothrips*

cruentatus

Onion thrips: *Thrips tabaci*



**Scale: *Lindingaspis rossi*, *Aonidiella aurantii*,
*Aspidiotus spp***



Red spider mite: *Tetranychus cinnabarinus*, *T. urticae*



Leaf cutter bee: *Megachile anthracina*



Castor semilooper: *Achaea janata* L.



Larva



Adult

Slug caterpillar: *Parasa (Latoia) lepida*



Larva



Adult

Gram caterpillar: *Helicoverpa armigera* Hub.



Larva

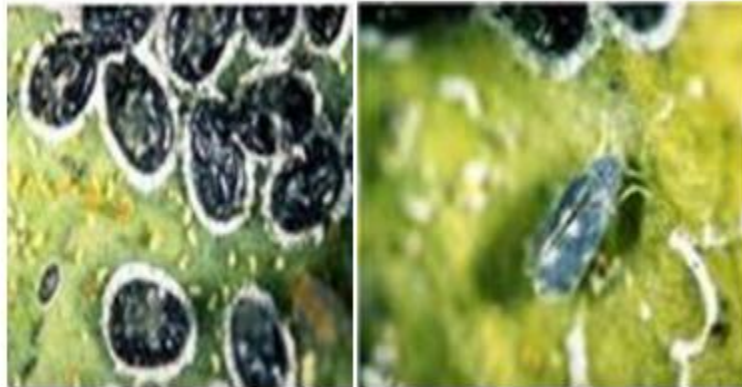


Adult

Flower Chaffer beetle: *Oxycetonia versicolor*



**Blackfly: *Aleurocanthus spiniferus*,
*Aleurocanthus rosae***



Black oval puparia

Adult

Pest of Chrysanthemum



Chrysanthemum aphid: *Macrosiphoniella sanborni*, *Myzus persicae*



Green peach aphids on underside of a leaf



Nymph



Winged adult

Thrips: *Microcephalothrips abdominalis*



Damaged leaves by thrips

Flower feeder: *Helicoverpa armigera*



Larva



Adult

Pest of Jasmine



Budworm: *Hendecasis duplifascialis*



Gallery worm: *Elasmopalpus jasminophagus*



Leaf web worm: *Nausinoe geometralis*



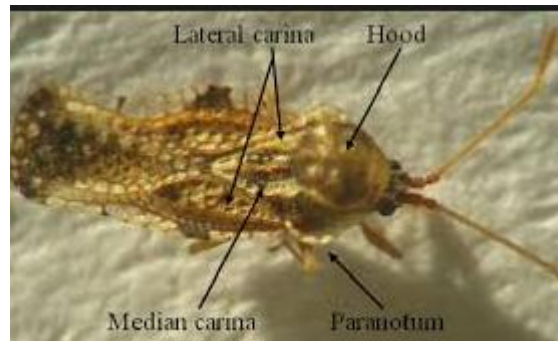
Jasmine eriophyid mite: *Aceria jasmini*



Red spider mite: *Tetranychus cinnabarinus*



Tingid bug: *Corythauma ayyari*



Jasmine bug: *Antestia cruciata*



Flower thrips: *Thrips orientalis*



Pest of Croton



Mealy bug: *Planococcus lilacinus*



Withering of leaves

Brown scale: *Saissetia coffeae*



Brown scales on stem



Croton caterpillar: *Achaea janata*



Caterpillar, *Achaea janata*

Pest of Tube rose



Bud Borer: *Helicoverpa armigera*



Larva



Adult

Aphids: *Aphis craccivora*



Grasshoppers: *Atractomorpha renulata*



Rodents



Weevils: *Myloccerus* spp



Red Spider Mites: *Tetranychus urticae*



Thank you