

## Marine Identification

### Sponges & Worms



**Sulphur sponge** *Suberites*

A firm smooth sponge, usually yellow cream or grey. Often starts on a shell. 20cm across.



**Sponge** *Halichondria bowerbanki*

Soft wispy pale yellow threads 5mm thick on sea squirts and worm tubes. Typical of lower salinity estuaries.



**Hedgehog sponge** *Dysidea*

Soft dirty white sponge, with 'spiky' surface, on stone or shell. In patches 2-3cm across



**Peacock worm** *Sabella*

Soft grey mud tube, Chestnut feeding fan. To 20cm long.



**Keel worm** *Pomatoceros*

White calcareous tube with keel along top making it look triangular. Can cover shells or stones.



**Scale worm** *Harmothoe*

Flattened greyish brown worm about 5cm long with visible scales in 2 rows along back



**White ragworm** *Nephtys hombergii*

Pale pink with a dark line along the centre and small paddles along the sides. "Squarish" in cross section



**King ragworm** *Nereis virens*

Dark green or brown with bluish iridescence and yellow frilly edge. Swims with graceful "S" shape motion. Can be 200mm or longer



**Harbour ragworm** *Hediste diversicolor*

Body of variable colours, greenish, yellowish or orange. Prominent blood vessel on top of body



**Terebellid**

Soft slimy body with long fine sticky tentacles. Bushy red gills.



**Glycera**

Often reddish in colour. Swims with a coiled corkscrew motion. Small fangs can give a bee like "sting"



**Capitella capitata**

Long cylindrical, bumpy body. Can expand and contract considerably. Very fragile

## Hydroides & Anemones



**Hydroid** *Hydralmania*

Yellow-brown 'feathers' spiralling around 30cm wiry stem. Single or in bunches



**Hydroid** *Sertularia*

Grey-brown fans spiralled around vertical stem to 20 cm.



**Hydroid** *Amphibetia*

Fine jointed threads like unraveled hemp rope. Typically 20cm



**Dahlia anemone** *Urticina*

Short fat tentacles withdraw into warty ball, red or green blodges.



**Daisy anemone** *Cereus*

Wide disc fringed with short tentacles. Contracts to pinkish dumbbell shape



**Plumose anemone** *Metridium*

White or apricot fluffy mop of tentacles on a smooth column, typically 10cm. Closes to a translucent ball.

Crustaceans



**Amphipod** eg. *Gammarus*

Amphipods are flattened vertically



**Isopod** eg *Idotea*

Isopods are flattened horizontally



**Brown shrimp** *Crangon*

Spotty grey with short legs and no rostrum.  
To 12cm



**Mantis shrimp** *Rissoidea*

Pinkish shrimp up to 15cm, with folded claws  
like a praying mantis



**Prawn** *Palaemon*

Transparent, long legs and upward pointing  
rostrum.



**Squat lobster** *Galathea*

Small (5cm) green or brown lobster with tail  
tucked under.



**Edible crab** *Cancer*

Pie-crust edge to smooth brown shell' black tipped chunky claws



**Green shore crab** *Carcinus*

Green, sometimes reddish-brown. Parasite, *Sacculina*, underneath.



**Hairy crab** *Pilumnus*

Brown shell with chocolate tipped claws, hairy legs.



**Velvet swimming crab** *Necora*

Large (10cm). Velvet covered shell, red eyes, navy blue lines on legs, last pair paddles.



**Harbour swimming crab** *Liocarcinus depurator*

Pink shell with sharp edges and claws. Purple patch on paddle legs



**Fringed swimming crab**

*Liocarcinus arcuatus*

Brown top, white underside. Fringe of hairs between eyes. Hairy paddles



**Long leg spider crab *Macropodia***

Small (1cm) brown slender crab with long hairy legs sometimes with weed attached.



**Sponge spider crab *Inachus***

Small (1cm) smooth pink crab usually covered in pale yellow sponge.



**Spiny spider crab *Maja***

Large (to 20cm) pink spiny crab with chunky legs and forked rostrum



**Porcelain crab *Pisidia***

Pea-size with long slender claws, bronze, green or white.



**Common hermit crab *Pagurus***

Ginger to white and brown, up to 8cm, knobby claws.



**Hairy hermit crab *Pagurus***

Hairy claws and red banded antennae. Smaller, to 3cm.

**Molluscs**



**Sea slug**      *Onchidoris*

Mottled grey and brown small (2cm) warty oval sea slug. Seasonal



**Sea slug**      *Acanthodoris*

Small white oval sea slug with rough surface. Eats *Alcyonidium*



**Sea slug**      *Philine*

Translucent smooth white waxy slug. 5cm. Moves in slime trail under sand



**Slipper limpet**      *Crepidula*

Chains of oval curved limpets in a 10cm ring. Females near the base.



**Grey Top shell**      *Gibbula*

Small (1cm) dumpy round shell with flecks and bands of bluish grey



**Painted top shell**      *Calliostoma*

Triangular smooth shiny snail shell with pretty pink markings



**Edible whelk *Buccinum***

Large snail with rounded ridged whorls.  
Cream foot, black spots



**Whelks laying eggs**



**Netted dogwhelk *Hinia***

Small brown shell cross-hatched with lines.  
Also Chiton



**Tingle *Ocenebra***

Deeply furrowed dirty white 2cm shell  
with small round opening.

See also oyster picture.



**Shells may be obscured by settlement of  
other animals!**



**European oyster *Ostrea***

Round flaking grey shell flat top, curved  
base. Legal landing 5cm





**Pullet shell** *Venerupis*

Native clam, brown (or blackened). Angle + straight at one end.



**Clam** *Venerupis philippinarum*

Imported alien. Ridged clam with varied brown and cream patterns



**Basket shell** *Corbula*

Small oval pink bivalve, upper shell fits inside lower one



**Mussel** *Mytilus*

Black curved shells, both curved. Held in bunches with byssus threads



**Cockle** *Cerastoderma*

White shell, sometimes with brown marking, with strong radial ridges, both rounded.



**American hard shelled clam**  
*Mercenaria*

Heavy thick round clam. 12cm full grown, under 5cm indicates recent breeding

## Bryozoans



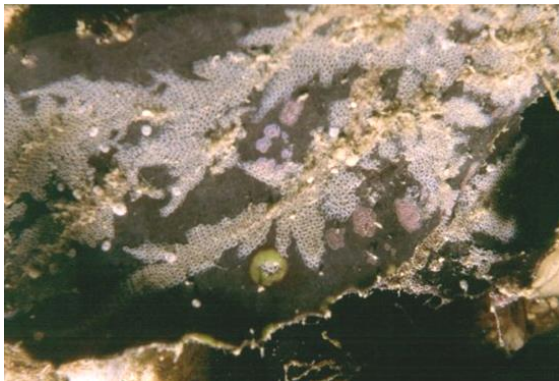
**Hornwrack**      *Flustra*

Fawn, 'leafy' clump of blades with individual cells visible



**Jelly fingers'**      *Alcyonidium*

Yellowish brown 'finger', round tip. Narrows to disc holdfast



**Sea mat**      *Electra*

Layer of cells often 4 wide, on algae, shell, etc.. Often branched like a star.



**Orange cushion**      *Cellepora*

Bulbous orange mound 2cm across, with rough surface

## Sea Squirts



**Milky squirt**      *Ascidella*

Milky, rough, grey, solitary or in bunches on shells, worm tubes, etc. Pink tinge around siphons.



**Leathery squirt**      *Styela*

Warty squirt, siphons at the top and narrower stalk. Often overgrown by epifauna



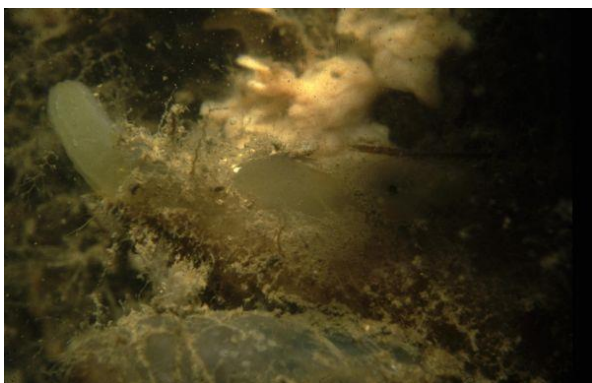
**Yellow tipped squirt'**      *Ciona*

Translucent, smooth, slimy, soft, narrow squirt. Yellow line around siphon openings.



**Gooseberry squirt**      *Dendrodoa*

Small red round squirt with siphons on top. Usually in closely packed clumps.



**Green sea squirt**      *Ascidia*

Rough surface, attached along one side, long terminal siphon



**Star ascidian**      *Botryllus*

Thin jelly film with siphon holes in rings like a daisy or star

## Fish



**Pout** *Trisopterus*

Smooth bronze fish,. 3 dorsal fins, barble under chin. Easily damaged, rarely survive trawl.



**Bass** *Dicentrarchus*

Silver fish with large scales and spines on dorsal fin and gill covers. Tough, good survivor



**Mullet** *Chelon*

Silver fish with large scales and horizontal lines. Small head and mouth.



**Plaice** *Pleuronectes*

Squarish shape, brown often with red spots. Smooth around side fins, knobby behind head.



**Sole** *Solea*

Oval shape, including small head. Grey with black blotches. Large visible scales.



**Flounder** *Platichthys*

Squarish shape brown rarely with red spots. Knobby around side fins. Tail straight across.



**Dragonet** *Calionymus*

Diamond shaped from above. Sandy with dark markings, male breeding colours spectacular.



**Goby** *Gobius*

Grey with black markings. 2 dorsal fins, large paddle-like pectoral fins



**Scorpion fish** *Taurulus*

Mottled brown fish. Large head with strong spines extended when disturbed.



**Greater pipefish** *Syngnathus*

Long narrow banded body, like un-wound seahorse.



**Corkwing wrasse** *Centrolabrus*

Greyish with mottling darker bands and continuous dorsal fin. Black spot in centre of tail base



**Ballan wrasse** *Labrus*

Bright green when young (3cm), duller and more brown later. Similar shape to corkwing.

## Seaweeds



**Sea lettuce** *Ulva*

Bright green flat seaweed



**Kelp** *Laminaria*

Yellowish-brown, wide thick frond on tough stem ('stipe') Several genera and species



**Midrib kelp** *Undaria*

Soft brown ragged frond on flattened central rib. Alien import, spreading fast.



**Japweed** *Sargassum*

Yellowish brown, stringy stems with small leaves and bobbles.



**Maidens hair** *Halurus/Ceramium*

Fine hair-like red weed. *Halurus* is jointed, *Ceramium* banded.



**Rough red weed** *Caliblepharis*

Tough rough flat red fronds with 'leaflets' round edges. Often colonised by bryozoans

## Echinoderms



**Sea Urchin** *Psammechinus*

Spiny ball with debris stuck to it. Purple tips to the spines



**Brittle star** *Amphipholis*

Tiny grey brittlestar 1-2cm across, found in crevices, shells, etc