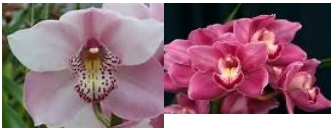






Golden Gate Cymbidium Society Orchid Auction, June 22, 2016

<u>Photo</u>	<u>Plant Name & Parentage</u>	<u>Notes,Color</u>	<u>Pot Size</u>	<u>Donation Thanks to</u>
	(Camas Meadows x Memoria Mark Henbury) 'Exeter', just finished blooming		2 gal	Merci, Pierre Pujol
	(Candy King x Robert Rowe)	Mother plant	Bag of Backbulbs	Sue Davis
	(Enchanted Profile 'Cotton Candy' HCC/AOS B/CSA x Cym Candy Floss 'Hyperdrive')	Mother Plant , Large light pink, rounded star shape. Stunning, potted in Orchidata, May- June 2016	1 gal	Sue Davis
	(Fiesta Del Sol 'Stirling' x Magic Lantern 'Stirling') '1622', hybridized by Barry Zimmerman.	Mother plant , pink, well-shaped	2 Gal	Barry Zimmerman
	(Fiesta Del Sol 'Stirling' x Magic Lantern 'Stirling'), hybridized by Barry Zimmerman - see BZ21 Photo.	unbloomed seedling	1 Gal	Barry Zimmerman
	(Fiesta Del Sol 'Stirling' x Magic Lantern 'Stirling'), hybridized by Barry Zimmerman - see BZ21 Photo.	unbloomed seedling	5 inch	Barry Zimmerman
	(Fiesta Del Sol 'Stirling' x Magic Lantern 'Stirling'), hybridized by Barry Zimmerman - see BZ21 Photo.	unbloomed seedling	5 inch	Barry Zimmerman



(Fifi 'Harry' 4N x Hokey Pokey 'Cherry Vanilla'), Mariposa Gardens #2418R	possibly long spike	4-6" pot	Noble Emory Estate
(Francis Aebi 'Satan's Sentinel' x Yowie Pepper 'Ghenhis') '1277'	dark red	2 Gal	Barry Zimmerman
(Gladio 'Hatfields' x Cindy Lou 'Geyserland')		4-6" pot	Noble Emory Estate
(Gladio 'Hatfields' x Cindy Lou 'Geyserland')		4-6" pot	Noble Emory Estate
(Gladio 'Hatfields' x Cindy Lou 'Geyserland')		4-6" pot	Noble Emory Estate
(Hazel Tyers 'Santa Maria' x Via Mar Tranquila 'Mt. Cook') = reg. as Cym. Tranquil Tyers, hybridized by Geyserland Orchids	4-5" spread, large whites	4-6" pot	Noble Emory Estate
(James Toya x Flaming Pepper). Whole Plant. (Hybridized by Hatfield Orchids), MIN BID \$10	Mother Plant , Shapely, dark rose / red Standard on strong upright spikes. White lips with small red spots.	1 gal. 2GB, 1GR, 1BB.	Weegie Caughlan
(Mem Gracie Allen x Valley Flower)	Mother plant mostly pink Standards	1 gal	Merci, Pierre Pujol
(Memoria Merv Dunn x Cym Valley Splash)	Mother plant (Usually alba standard x a Inner splashing inside the petals), Divided May- June 2016	6"-1gal	Sue Davis
(Mighty Mouse 'Minnie' x Via Ambarino 'Jim'), XCY003013, probably SBOE seedling	Mother plant. orange x Big deep yellow	4-6" pot	Noble Emory Estate
(Neil Pagano 'New Horizon' x Kusuda Shinning '#4') '621'	rich cream - rose pink	1 Gal	Barry Zimmerman

No Photo



(Pepperpuss 'Irvine Falls' x Mem Amelia Earhart 'Scott Valine') **Mother Plant**

Bag of Backbulbs

Sue Davis



(Pinata 'Jungle Cat' x Kirby Lesh 'Cinnabar") **Unbloomed Seedling**

spots, stripes or both, and a fuller shaped Pinata.

1 gal

Jim Donoso

(Rincon 'Clarisse' 4N x Vogelsang 'Eastbourne') P103

blush to pinks, arching

4-6" pot

Noble Emory Estate

(Rosanna 'Pink' x Dolly 'Featherhill') hybridized by A. Easton

Mother Plant.

Bag of Backbulbs

Sue Davis

(San Miguel x Wigianium)

Mother Plant. light yellow or light cream

1 gal

Merci, Pierre Pujol

(Sleeping Nymph 'Gaslight' x Red Beauty 'Carmen' 4N) = Cym. Fat Chance, hybridized by R&N Smith

Mother Plant. red x yellows

4-6" pot

Noble Emory Estate

(Solana Beach 'St. Francis 4N, B/CSA, AM/AOS x Via Ambarino 'Highland' FCC/AOS)

pink/blush x deep yellow

4-6" pot

Noble Emory Estate



(Son of Freak 'Montessa Magic' x Yowie Flame 'Heather') = Cym. Freaking Flame, hybridized by A. Easton

Mostly reds - pinks, **possible sepal partial PELORIC**; Divided, potted in Orchiata, May- June 2016

6"-1gal

Sue Davis

No Photo

(Speckles x Splatters), **IN BLOOM**

spots?

1 gal

Merci, Pierre Pujol

(Summer Watermelon 'Easter Gold' x Son of Freak 'Montessa Magic'), hybridized by Steve Thai

Mother Plant, NON PELORIC, Rust colored, Divided, potted in Orchiata, May- June 2016

6"-1gal

Sue Davis



(tag reads Dos Pueblos Young) Jungfrau (Cym. Alexanderi x Cym. Eagle); Most likely **Cym. Jungfrau 'Dos Pueblos' HCC-AOC, S/CSA, AM/AOS**, hybridized by HG Alexander, Great Britain

Large blush standard. It has been said that this plant may send out 2 spikes per bulb . If not, it is certainly an easy floweri g plant.

Noble Emory Estate



(Vanessa Amarsi 'Elinor' 4n x Flaming Pepper 'Dural' 4n) Whole plant. Hybridized by Hipkins, Royale Orchids, Australia. **MIN BID \$10**

Mother Plant. Blooming size, shapely, floriferous, Dec - Jan blooming, flat Rose Red Novelty, good flower count & presentation.

1gal. 3GB, 1BB.

Weegie Caughlan



(Via Del Playa 'The Globe' 4N x Cym Peter Dawson 'Grenider' 4N)

Mother plant, Divided May- June 2016

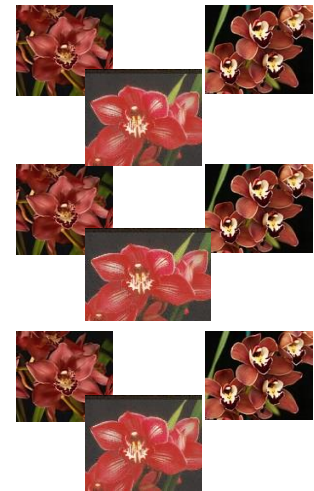
6"-1gal

Sue Davis

(Wyalong x Heart Strings)(cc92) 9-1/93)

4-6" pot

Noble Emory Estate



[(Claude Pepper x Volcano Geyserland = Cym. Little Orphan Annie) x Red Beauty = Orphan Beauty], hybridized by A. Easton

Mother plant division, Divided, potted in Orchiata, May- June 2016

1 gal

Sue Davis

[(Claude Pepper x Volcano Geyserland = Cym. Little Orphan Annie) x Red Beauty = Orphan Beauty], hybridized by A. Easton

Mother plant division, Divided, potted in Orchiata, May- June 2016

4-inch pot, established Backbulb

Sue Davis

[(Claude Pepper x Volcano Geyserland = Cym. Little Orphan Annie) x Red Beauty = Orphan Beauty], hybridized by A. Easton

Mother plant division, Divided, potted in Orchiata, May- June 2016

4-inch pot, established Backbulb

Sue Davis



[(Highland Advent x May Hopcraft) 'Park Victoria' x Tower of Gold 'Stirling'], hybridized by Barry Zimmerman, cross BZ20 – See BZ20 Photo

yellow

5 inch

Barry Zimmerman

[(Tethys x Esk Claret = Cym. Esk Claret) x Vogelsang = Cym. Nancy Miyamoto]

Seedling **IN BLOOM**, hybridized by A. Easton

great reputation plant, pink, novelty size, nicely spotted lip

Greg Corrales



[Grcym.] **Lovely Melody** (Cym. ensifolium x Gram. scriptum), Grammatocymbidium), hybridized by T. Takai

maybe green alba, alba yellow lip, can be striped 4-6" pot

Noble Emory Estate

[Mem. Leland Williams (tracyanum FCC x Red Beauty 'Carmen') x (tracyanum FCC x tracyanum F1) #1], **Unbloomed seedling.**

If you like Wild reds, this is the one! Has 75% tracyanum in the background, so may be striped and fragrant.

Jim Donoso

Autumn Crisp 'Wally's Choice' (Claude Pepper x Thanksgiving), hybridized by Orchids Royale

orange, well shaped

4-6" pot

Noble Emory Estate



Avranches 'Cinnabar' (Plemont x Icho Tower), hybridized by the Eric Young Orchid Foundation. **MIN BID \$10**

Mother Plant div; Very shapely, round, soft yellow Standard. Exhibition, breeding

1 Gal

Weegie Caughlan

Bali (Sussex x Cym. Babylon) **OR Powder Puff 'Sp'** (Cym. Sensation x Cym. Cleo Sherman), hybridized by Stewart, Inc. or P. Rochfort, 1981

blush or blush/pink

4-6" pot

Noble Emory Estate



BC. Cynthia 'Pink Lady' ((Rl. digbyana x C. walkeriana), hybridized by St. Quintin, 1917

lavender pink, Tested Virus Negative

6 inch pot

Cheryl Phillipson

broken tag reads '... Strings', probably **(Wyalong x Heart Strings)**, (cc92) 9-1/93

4-6" pot

Noble Emory Estate

broken tag reads ...er 'Red Reason' 'er') reds 4-6" pot Noble Emory Estate
 probably **Cym. James Tee Kirk' #2'** (Cym. Claude Pepper 'Red Reason' x Cym. Yowie Flame 'Heather' HCC/AOS), hybridized by Geyserland Orchids



Brook Street 'Featherhill' (Cym. Mayfair x Cym. devonianum), hybridized by Keith Andrews 5 inch Barry Zimmerman

California 'Cascade', hybridized by Stewart, Inc. large standard, whites to pastel pinks, yellows, greens 4-6" pot Noble Emory Estate

Caligold 'Painted Desert' (Cym. Woodalda x Cym. Tethys), hybridized by Stewart, Inc. yellow-greens x possible red spots 4-6" pot Noble Emory Estate



Cherry Showers 'Fil- American Beauty', (Cym. Inasa x Cym. Cherry Cola), hybridized by New Horizon Orchids Meristem, Divided, potted in Orchiata, May- June 2016 1 gal Sue Davis

Chocolat Royale (Cym. Electric Ladyland x Cym. Khan Flame), hybridized by Royale Orchids (33-01) pinks reds 4-6" pot Noble Emory Estate

Chuck Pascoe '752' (Billion Dollar Baby 'No. 4' x dayanum 'Bert'), hybridized by Andy Easton 5 inch Barry Zimmerman

Cinnabar 'The Globe' (Regency x Flavian), hybridized & registered by Keith Andrew. A true bit of history - a **piece of the mother plant** started as a BB, given to Weegie by Keith. **MIN BID \$10** **Mother Plant div;** 18-20 dark red-plum purple Standard flowers. Open form, 4 ft long, gracefully arching inflorescence. 1 gal (3GB, 1GR, 1BB) Weegie Caughlan



Clarisse Austin 'Lucky Day' (Cym. Tapestry x Cym. Rincon), hybridized by Rudvalis maybe pinks, reds, bronzes 4-6" pot Noble Emory Estate

Claude Pepper 'Rust' (Cym. Rincon x Cym. Doris Aurea), hybridized by Dos Pueblos Orchids **Mother Plant.** Divided May- June 2016 6"-1gal Sue Davis

Cleo Sherman 'Celeste' HCC/AOS (Cym. Alexanderi x Cym. Babylon), hybridized by Don Sherman blush pinks, solid pinks, oranges, reds 4-6" pot Noble Emory Estate

Coral Sea 'Tiph' or 'Triumph' HCC/AOS (Cym. Swallow x Cym. Babylon), hybridized by 4-6" pot Noble Emory Estate

Cym. R.B., from Orchid Obsession , M299, could it be "Cym. Red Beauty" (Cym. Vanguard x Cym. Tapestry), hybridized by Hermann Winter, Germany? Not sure... 4-6" pot Noble Emory Estate

Dorchester 'Rachel' (Alexanderi x Tityus), hybridized by Armstrong & Brown, GB large white standard 4-6" pot Noble Emory Estate

Dorchester 'Rachel' (Alexanderi x Tityus), hybridized by Armstrong & Brown, GB white 4-6" pot Noble Emory Estate



Dorothy Stockstill 'New Horizon' 6N (Cym. Phar Lap x Cym. Miss Muffet), hybridized by Geyserland **Mother Plant.** red pendulous with very dark labellum Bag of Backbulbs Sue Davis

Dorothy Stockstill 'New Horizon' 6N (Cym. Phar Lap x Cym. Miss Muffet), hybridized by Geyserland **Mother Plant.** red pendulous with very dark labellum Bag of Backbulbs Sue Davis

Dutchman's Gold (Cym. Golden Elf x Cym. madidum), hybridized by Geyserland Orchids golden yellow, maybe fragrant, some light spotting near the beginning of the lip; lovely red suffusion & heavily spotted lip 4-6" pot Noble Emory Estate

Cym. Elle Ronis (Cym. Khan Flame x Cym. Kabuki Moon)



Elle Ronis Unbloomed Seedling (Khan Flame 'Raquel' x Kabuki Moon 'Royale'), Remake by Hybridizer, Kevin Hipkins, Royale Orchids, Australia. Kevin stated of this remake: "Simply the finest pink **Mother Plant**, Expect large, pink to deep rose Standards with excellent form, and 14-16 flowers carried well above the foliage on self-supporting stems. 1 gal (1GB, 1GR) Weegie Caughlan



Enzan Knuckle 'Paulista' (Cym. tracyanum x Cym. Signal), hybridized by Mukoyama spotted, peachy color petals; wild tracyanum shape; probably Mericloned; Divided, potted in Orchiata, May- June 2016 6"-1gal Sue Davis

No Photo

Enzan petite '256' (Petite x eburneum), hybridized by Mukoyama 5 inch Barry Zimmerman

Ethel Ward var. Pea Green (Cym. Alexanderi x Cym. Lysander), hybridized by ; could be cultivar 'Sea Green', which was awarded a AM/AOS (or not) green 4-6" pot Noble Emory Estate



Ethel Weber 'Brentwood' BM/CSA (Miranda x Lysander), hybridized by Paul Weber yellow standard 4-6" pot Noble Emory Estate

Ethel Weber 'Brentwood' BM/CSA (Miranda x Lysander), hybridized by Paul Weber yellow standard 4-6" pot Noble Emory Estate

Fair Promise #2 (Vieux Rose x Mary Ann), hybridized by Dell Park blush or white, one awarded sibling has nice balanced shape 4-6" pot Noble Emory Estate

Fair Promise #2 (Vieux Rose x Mary Ann), hybridized by Dell Park blush or white, one awarded sibling has nice balanced shape 4-6" pot Noble Emory Estate

Fair Promise (Vieux Rose x Mary Ann), hybridized by Dell Park blush or white, one awarded sibling has nice balanced shape 4-6" pot Noble Emory Estate



Fatal Beauty 'Fae' (Cym. Wild Colonial Boy x Cym. devonianum), hybridized by Geyslerland Divided, potted in Orchiata, May- June 2016 Bag of Backbulbs Sue Davis

Fatal Beauty 'Fae' (Cym. Wild Colonial Boy x Cym. devonianum), hybridized by Geyslerland Divided, potted in Orchiata, May- June 2016 Bag of Backbulbs Sue Davis



Featherhill Fanfare 'Rose Jade' #2, B & SM/CSA, AM/AOS (Cym. Fanfare x Cym. Solana Beach), 623, hybridized by Featherhill Exotic Plants well shaped, blush pink with green underlay 4-6" pot Noble Emory Estate

Featherhill Fanfare 'Rose Jade' #2, B & SM/CSA, AM/AOS (Cym. Fanfare x Cym. Solana Beach), 623, hybridized by Featherhill Exotic Plants well shaped, blush pink with green underlay 4-6" pot Noble Emory Estate

Fire Beauty (Cym. Firewheel 'Ruby' x Cym. Red Beauty 'Netty') , hybridized by E. Caughlan pinks to reds mostly 4-6" pot Noble Emory Estate



Forty Niner 'Alice Anderson' S/CSA, AM/AOS (Cym. Apollo x Cym. Dorama), hybridized by Fred Stewart, Inc. large, really great green. Go Niners! 4-6" pot Noble Emory Estate

Garrapata Creek (Cym. Gidget 'Monterey' x Cym. Tethys 'Black Magic'), hybridized by Monterey Orchid Co. dark pinks to reds; arching 4-6" pot Noble Emory Estate



Gene Siskel 'Carol Annette' (Cym. Doctor Baker x Cym. Ruby Eyes), hybridized by Geyslerland Orchids division of **Mother Plant**. Arching - pendant, dark red 2 gal Audrey Young-Tarter



Gladys Whitsell 'Constance' (Cym. Fifi x Cym. sanderae) might be mislabeled as 'Contrast' (or not), hybridized by Geyserland Orchids

2 gal recent division Neal Tadlock



Golden Elf (Cym. ensifolium x Cym. Enid Haupt), maybe 'Sundust', 766, hybridized by Paul Gripp yellow, fragrance like lemons, can bloom fall to spring

4-6" pot Noble Emory Estate

Golden Elf (Cym. ensifolium x Cym. Enid Haupt), maybe 'Sundust', 766, hybridized by Paul Gripp yellow, fragrance like lemons, can bloom fall to spring

4-6" pot Noble Emory Estate

Greenstone 'Quartz' (Cym. Wyanga x Cym. Sussex Dawn), hybridized by A. Easton, **IN BLOOM** Well-shaped ALBA; light green fades to white with green underlay, white lip w/ yellow spots

1 Gal Audrey Young-Tarter

Gwen Sherman 'Jackpot' (Cym. Miretta x Cym. Alexanderi), hybridized by Don Sherman large

4-6" pot Noble Emory Estate

Illegible tag unk

4-6" pot Noble Emory Estate



Jade Dream 'Lime' (Lemon Butter x Baltic Honey 'Sherbert'). Hybridized by Loren Batchman. Yellow. When it bloomed with 2 large flower spikes, it took a First Prize at our 2016 GGCS Show.

1 gallon pot with 3 GB (green bulbs) Ed Mc Lean

James Tee Kirk #2 (Cym. Claude Pepper 'Red Reason' x Cym. Yowie Flame 'Heather' HCC/AOS), hybridized by Geyserland Orchids red standard

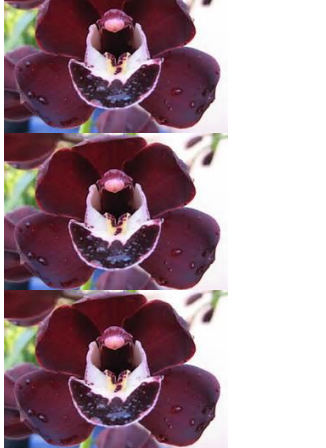
4-6" pot Noble Emory Estate

Kaanapali Unbloomed Seedling (Enchanted Beach x Everett Stockstill)

Mother Plant, Attractive, small Standard, cream. Upright - arcing spikes, medium burgundy spots medially, red spotted lips

1 Gal, 3GB, 1BB Weegie Caughlan

Whole plant. (Hybridized by Loren Batchman, Casa de Las Orquideas). **MIN BID \$10**



<p>Kiwi Baron 'Sweeping' (Kiwi Cascade 'Tikitere' x Ruby Eyes 'Red Baron' 4n), hybridized by Andy Easton</p>	<p>reds</p>	<p>5 inch</p>	<p>Barry Zimmerman</p>
<p>Kiwi Midnight 'Geyserland' (Cym. Janet Holland x Cym. Khairpour), hybridized by A. Easton</p>	<p>Meristem, Divided, potted in Orchiata, May- June 2016</p>	<p>Bag of Backbulbs</p>	<p>Sue Davis</p>
<p>Kiwi Midnight 'Geyserland' (Cym. Janet Holland x Cym. Khairpour), hybridized by A. Easton</p>	<p>Meristem, Divided, potted in Orchiata, May- June 2016</p>	<p>Bag of Backbulbs</p>	<p>Sue Davis</p>
<p>Kiwi Midnight 'Geyserland' (Cym. Janet Holland x Cym. Khairpour), hybridized by A. Easton</p>	<p>Meristem, Divided May- June 2016</p>	<p>1 gal</p>	<p>Sue Davis</p>
<p>Kuranda 'Arthur Dawson' CCM/CSA. HCC/AOS (suave x madidum). IN BLOOM, with 2 spikes !! blooming on the same bulb for several years. Beautiful specimen plant. Warmth tolerant, blooming May/June. (Hybridized by Greenoaks in 1972). MIN BID \$10</p>	<p>Mother Plant, Tiny, fragrant, bronze flowers, pendulous spikes. Multiple spikes on each bulb and</p>	<p>5" pot, 1GB, 1BB.</p>	<p>Weegie Caughlan</p>
<p>Lake Nakuro (Cym. Mimi x Cym. devonianum) 207, hybridized by Featherhill Orchids</p>	<p>some are pinks to reds</p>	<p>4-6" pot</p>	<p>Noble Emory Estate</p>



LC. Drumbeat 'Heritage' HCC-AOS (C. Bonanza (Bracey) x C. Horace), hybridized by Stewarts, Inc., **IN SHEATH !**

Lavender, **IN SHEATH !**

6 inch pot

Cheryl
Phillpson



LC. Tahoe Rose var. coerulea 'Sierra Doll' (C. walkeriana x C. purpurata), hybridized by Gold Country

Coerulea, white petals and sepals, purplish lip, Tested Virus Negative

6 inch pot

Cheryl
Phillpson



Lillian Fujimoto " Irish Lass" B/CSA, AM, CCM, HCC/AOS (Cym. Fifi x Cym. Sussex Moor), hybridized by Andy Easton

2 gal recent
division

Neal Tadlock

Lily Langtry '#1' (Cym. Rosanna x Cym. Remus), hybridized by Dos Pueblos Orchids

pinks to blush

4-6" pot

Noble Emory
Estate



Lovely Breeze (Cym. Green Breeze x Cym. Lovely Valley), hybridized by Mukoyama

green novelty

1 gal

Jim Donoso

Lynette 'Carados' (Cym. Sweetheart x Cym. Blue Smoke), M697, hybridized by Bowers & Wiglesworth probably floriferous, novelty, reds, pinks,yellows, greens 4-6" pot Noble Emory Estate



Mainstem 'Hip Hip' (Cym. Camelot x Cym. Paracel), hybridized by Rod McLellan Co. Divided, potted in Orchiata, May- June 2016 6"-1gal Sue Davis



Mary Pinchess 'Del Rey' HCC/AOS, B/CSA (Cym. pumilum x Cym. Pajaro), hybridized by Dos Pueblos Orchids, Inc. small novelty-min, mustard yellows - green, almost solid red lip 4-6" pot Noble Emory Estate

Memoria Yvonne Moulton '688' (Marianne Faithful 'Stirling' 4n x Tower of Gold 'Stirling' 4n), hybridized by Barry Zimmerman. yellow 1 Gal Barry Zimmerman



Moira 'Cinnabar' (Pauwelsii x tracyanum), hybridized by Hassell & Co., London. green-bronzey, wild tracyanum look, spotted 2 Gal Barry Zimmerman

Norito Hasegawa '1478' (Ernest Hetherington 'Geyserland' x Crisp Carrot 'Hatfields'), hybridized by Hatfield Orchids. orange 2 Gal Barry Zimmerman

Orchids by Sola, div 2009 4-6" pot Noble Emory Estate



Paph. (Donna Haney x (Vashon Sundance x Primetime)

greenish yellow

6 inch pot

Cheryl Phillipson



Paph. (z7130 Green Lantern x fairrieanum 'Hallalula')

6 inch pot

Cheryl Phillipson



Paph. Emerald Lake '#1' (Paph. Stone Lovely x Paph. Emerald Sea), hybridized by Orchid Zone

yellow green with big white border on top sepal

6 inch pot

Cheryl Phillipson



Paph. Stone Crazy 'Summerset' (Paph. Crazy Jolly x Paph. Stone Lovely). Hybridized by Orchid Zone

white top sepal

6 inch pot

Cheryl Phillipson

Parfait (Cym. Chesham x Cym. Balkis), hybridized by Rod Mc Clellan Company

Big, whites - yellows - greens

4-6" pot

Noble Emory Estate

IN BLOOM

Pepperpuss, IN BLOOM Seedling (Cym. Pfeiffer Falls x Cym. Piñata), hybridized by L. Batchman

yellow - green Standard, Spotted petals

1 gal

Greg Corrales

IN BLOOM

Pepperpuss, IN BLOOM Seedling (Cym. Pfeiffer Falls x Cym. Piñata), hybridized by L. Batchman

yellows to rose pink, Spotted petals & sepals from both parents

1 gal

Greg Corrales



Pepperspotz '1663' (Spotz 'Cascade' x Pepperpuss 'Lavender Falls'), hybridized by Loren Batchman.

yellow striped

1 Gal

Barry
Zimmerman



Piñata 'Jungle Cat' (Cym. Tethys x Cym. Khyber Pass), hybridized by Robert Schmultz

red spotted standard

Greg Corrales



Psychotic 'Auction' PELORIC (Hazel Tyers 'Santa Maria' x Phreaque 'Gotcha'), hybridized by Loren Batchman.

cream PELORIC

5 inch

Barry
Zimmerman



Pywacket Unbloomed Seedling (Pywacket 'Royale's x Pywacket 'Peats Ridge'), 1 Gal, Hybridizer probably Kevin Hipkins of Royale Orchids, Australia.

Wild tracyanum looks

1 gal

Ed Mc Lean



Pywacket Unbloomed Seedling (Pywacket 'Royale's x Pywacket 'Peats Ridge'), 1 Gal, Hybridizer probably Kevin Hipkins of Royale Orchids, Australia.

Wild tracyanum looks

1 gal

Ed Mc Lean



Rachel Unelma '676' (selfing of Rachel Unelma 'Stirling'), originally hybridized by Geyserland Orchids, remake by B. Zimmerman

dark bronzey orange

2 Gal

Barry
Zimmerman

Rajah's Ruby 'Edelaine Jules' (Cym. Dorothy Rowe x Cym. Clarisse Austin), hybridized by L. Batchman

most have been dark reds, Divided, potted in Orchiata, May- June 2016

Bag of Backbulbs

Sue Davis

Rajah's Ruby 'Edelaine Jules' (Cym. Dorothy Rowe x Cym. Clarisse Austin), hybridized by L. Batchman

most have been dark reds, Divided, potted in Orchiata, May- June 2016

Bag of Backbulbs

Sue Davis



Red Beauty 'Evening Star' HCC/AOS (Cym. Vanguard x Cym. Tapestry), hybridized by Hermann Winter, Germany

dark red standard

4-6" pot

Noble Emory Estate



Red Beauty 'Wendy' (Cym. Vanguard x Cym. Tapestry), hybridized by Hermann Winter, Germany

pink oranges

4-6" pot

Noble Emory Estate



Red Imp (Cym. Alderman x Cym. pumilum), RED, very floriferous, blooms many spikes in a small pot hybridized by Mrs. H. Ireland

4-6" pot

Noble Emory Estate



Rincon Lady 'Azure' (or maybe 'Ausra' S- well shaped, may be pink CSA) (Cym. Lady Lucy x Cym. Rincon), hybridized by

4-6" pot

Noble Emory Estate

Robert Rowe - 1 (Cym. Firewheel x Cym. Cleo Sherman), hybridized by Featherhill

pinks to blushes

4-6" pot

Noble Emory Estate



Rothesay 'Chikitin Gubat' (Cym. Berwick x Cym. Vieux Rose) , hybridized by Mc Bean's

Division of owners piece, **believed to be from Mother Plant**, Orange **PETAL PELORIC !** Divided, potted in Orchiata, May- June 2016

6" pot

Sue Davis

Ruby Pendant 'Abigail' (Cym. Last Tango x Cym. Ruby Eyes), hybridized by Andy Easton

dark red, novelty, pendant, probably grown originally by Steve Thai

1 gal

Jim Donoso



Ruby Pendant 'Phuong' (Cym. Last Tango x Cym. Ruby Eyes), hybridized by Geyserland

Divided, potted in Orchiata, May- June 2016, 6" -1 gal pot, Donated by Sue Davis



Sevier' (Rio Rita x Yowie Flame) AE 1872, hybridized by A. Easton?

pinks to reds

4-6" pot

Noble Emory Estate



Snow Ball (Cym. Sarah Jean x Cym. insigne), hybridized by Hatfields' Orchids

Mother Plant. hopefully white Alba, Divided May- June 2016

Bag of Backbulbs

Sue Davis



Snow Ball (Cym. Sarah Jean x Cym. insigne), hybridized by Hatfields' Orchids

Mother Plant. hopefully white Alba, Divided May- June 2016

Bag of Backbulbs

Sue Davis



So Gold '1493' (So Bold 'Stirling' 4n x Tower of Gold 'Stirling' 4n, hybridized by Barry Zimmerman, See BZ18 Photo.

oranges - yellows

1 Gal

Barry Zimmerman



So Gold '1493' (So Bold 'Stirling' 4n x Tower of Gold 'Stirling' 4n, hybridized by Barry Zimmerman, See BZ18 Photo.

oranges - yellows

2 Gal

Barry Zimmerman

Splatters [sib cross of 'Red Velvet' JC/AOS x 'Flamenco' AD/AOS, AD/CSA (hybrid of Cym. Robin x Cym. Tethys)], hybridized by L. Batchman Parents have spotted petals w/mostly solid red lips 4-6" pot Noble Emory Estate



Splatters 'Flamenco' HCC/AOS, AD/CSA (Cym. Robin x Cym. Tethys), hybridized by L. Batchman lightly pink with large black spots over all petals and sepals Greg Corrales



Street Cat 'Declawed' (Cym. Piñata x Cym. Street Hawk), hybridized by William D. Bailey Divided, potted in Orchiata, May- June 2016 6" pot, 2 BBs Sue Davis



Sunshine Falls 'Butterball' AM/AOS (Cym. King Arthur x Cym. madidum), hybridized by Fred A. Stewart yellow, florifeous, many spikes, bunchy 4-6" pot Noble Emory Estate

Sweetheart 'Blue Pacific' HCC/AOS (Cym. pumilum x Cym. Alexanderi), hybridized by Arno H. Bowers green, midline thru petal 4-6" pot Noble Emory Estate



Tethy's 'Black Magic' (Cym. Suva x Cym. Khyber Pass), hybridized by Stewarts Inc. red, solid lip Bag of Backbulbs Sue Davis



Tethys 'Stirling' 4n (selfing of Tethys' "Black Magic" HCC/AOS), hybridized by Stewarts, Inc.

Pink, well-SPOTTED

5 inch

Barry
Zimmerman



Theresa Stockstill Unbloomed Seedling. (John Wooden 'Royale' 4n x Kirby Lesh 'Cinnabar' AM/AOS, S/CSA 4n), from the E. Caughlan make of this cross - however Everett Stockstill made the cross first and registered it 2012). **MIN BID \$10**

Mother Plant, Large, rose Standards with good form. Many have carried the spotted coloring of the Kirby Lesh, but some may be a clear deep rose.

1 gal, 3GB.

Weegie
Caughlan



Totally Taboo 'Stirling' (Arts 'Royal Rage' B/CSA x Mighty Mouse 'Minnie'), hybridized by Orchids Royale.

orange

1 Gal

Barry
Zimmerman



Tower of Gold 'Cinnabar' (Via Ambarino x Icho Tower), **Mother Plant,** Hybridized by E. Caughlan & Everett Stockstill. **MIN BID \$10**

Mother Plant; Large, rounded, yellow-green Standard, fairly uniform cross. Strong, self-supporting inflorescence, flower count of 12-14 flowers, blooms Jan to Feb.

1gal. 3GB,
1BB.

Weegie
Caughlan

tracyanum "New Horizon' 4n (1 gal)

bronzey green, spots, stripes, fragrant

1 gal

Merci, Pierre
Pujol

Trade Winds 'Picture' HCC/AOS, (Cym. Rosette x Cym. Babylon), hybridized by Fred A. Stewart

green or yellow

4-6" pot

Noble Emory
Estate

Trade Winds 'Picture' HCC/AOS, (Cym. Rosette x Cym. Babylon), hybridized by Fred A. Stewart

green or yellow

4-6" pot

Noble Emory
Estate

Trade Winds 'Picture' HCC/AOS, (Cym. Rosette x Cym. Babylon), hybridized by Fred A. Stewart

green or yellow

4-6" pot

Noble Emory Estate



Val Peck 'Overflow' (Len Southward x suave), **Whole plant. IN BLOOM!** Hybridized by Andy Easton. **MIN BID \$10**

Mother Plant, 30 - 40 shapely, clear bright green Miniature flowers on long, graceful pendent inflorescences, robust plant. Warm growing. Very floriferous!

1 gal. 1GB, 2BB.

Weegie Caughlan



Vidar 'Harlequin', M324, (Cym. Westpearl x Cym. Miretta), hybridized by Dr. Frejvid Borg, Finland

famous green, **Petal Peloric**

4-6" pot

Noble Emory Estate



POD PARENT
Exeter Dramatic Mary 'Stripes' 4n
(Karen x Noel Wilson)



POLLEN PARENT
Red Beauty 'Ring of Fire'
(Vanguard x Tapestry)

Winnie Kim Lan Tong (Exeter Dramatic Mary 'No. 35' 4n x Red Beauty 'Ring of Fire'), hybridized by Barry Zimmerman, See BZ19 Photo.

orangish to reds

5 inch

Barry Zimmerman



Zygopetalum (intermedium x intermedium)

Bag of Backbulbs

Sue Davis