

Activity-3rd Training Course on radioanalytical methods for α and β emitters



2022 Iimoto Lab Annual meeting

Wang Yadong, China Institute for Radiation Protection

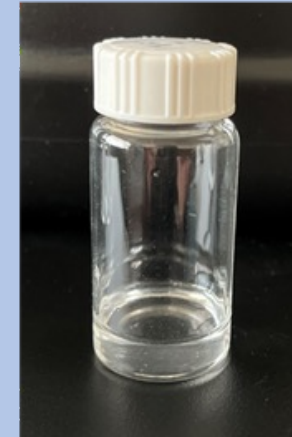
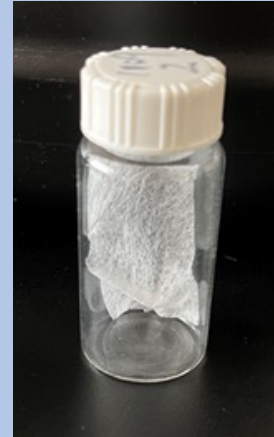
Research-Nasal Swab Analysis of gross α and gross β

- ◆ Apply to regular internal exposure monitoring
- ◆ Apply to emergency screening



- ✓ The analysis is accomplished within 20 min.
- ✓ The detection limit is 0.05 Bq for gross alpha and 0.5 Bq for gross beta with counting time of 10 min.

Sample preparation



LSC measurement

