



Mildmay Grove North, N1

£850,000

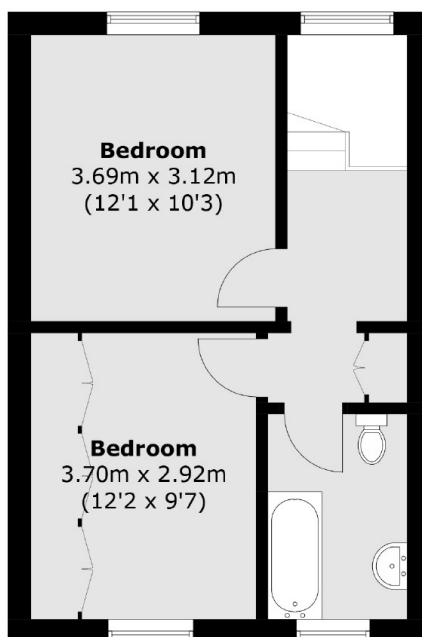
A well presented two bedroom flat split across the top two floors of a Victorian conversion on Mildmay Grove North. This home benefits from a private entrance, a separate kitchen and living room and direct access to an undemised terrace.

The property is located only a short walk to local amenities and local transport links from Newington Green. Canonbury Overground and Dalston Kingsland/ Junction are also within half a mile walk.

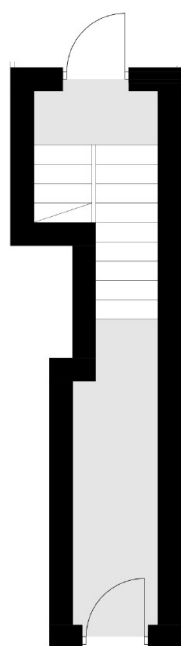
Features

- Two Bedrooms
- Top Floors
- Private Entrance
- Separate Kitchen
- Period Features

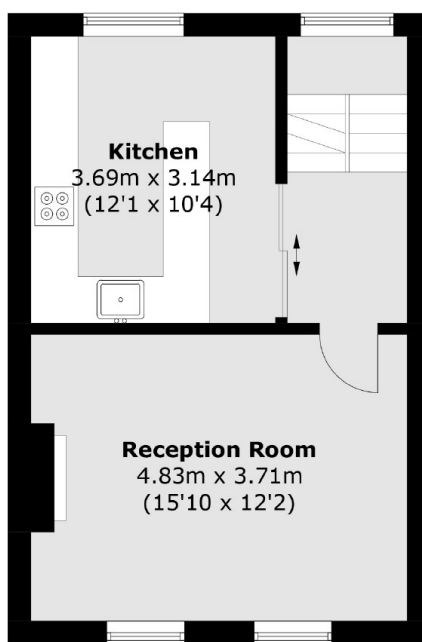
Mildmay Grove North, London, N1



Second Floor



Ground Floor



First Floor

Total area (approx.): 81.3 sq. m (874.9 sq. ft)