



Upper Street, N1 £365,000

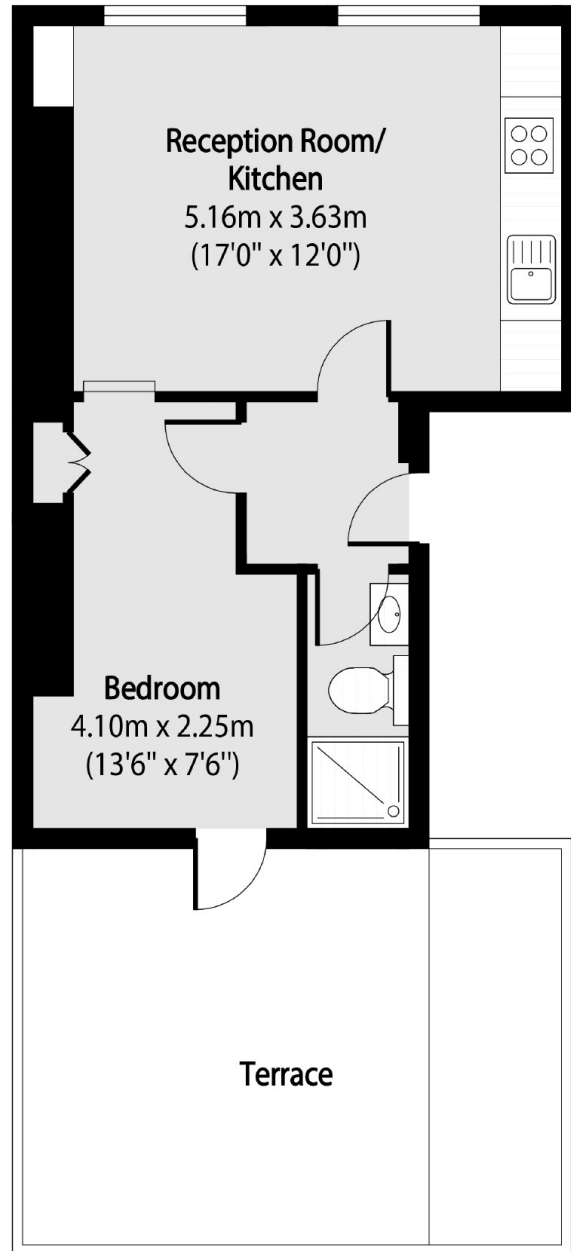
A one bedroom apartment on Islington's vibrant Upper Street. This property is on the second floor of a period conversion with a bright open plan kitchen living room, modern fittings throughout and sole access to a generous roof terrace.

This property is located on Upper Street within easy reach of Highbury & Islington (Victoria line, Overground, National rail) and Angel (northern line) with plenty of buses and all the shops, bars and local amenities on the doorstep.

Features

- One Bedroom
- Central Location
- Open Plan Living
- Undemised Terrace
- Modern Fixtures
- Wood Flooring

Upper Street, London, N1



Total area (approx): 34.56 sq m (372 sq. ft)

Terrace total area (approx): 20.67 sq m (222 sq. ft)