



**WELCOME**



# ROLEX 24 AT DAYTONA



SAT | JAN 29 | 1:30PM ET  
**LIVE ON NBC**



# SERIES CONTACTS

**Beaux Barfield**

**Geoff Carter**

**Paul Walter**

**Mike Neely**

**Eric Haverson**

**Johnny Knotts**

**Carol Mueller**

**David Pees**

**Tracy Sanderson**

**Roy Spielmann**

**Race Director**

**Sr. Director Series Platforms**

**Sporting Regulations**

**Paddock Logistics**

**Technical**

**Pit Lane Supervisor**

**Administration**

**Timing & Scoring**

**Medical Liaison**

**Track Services**

**(832) 260-1032**

**(386) 868-6624**

**(614) 598-6783**

**(386) 308-8933**

**(386) 562-7214**

**(813) 763-4669**

**(386) 262-8932**

**(386) 308-8866**

**(813) 486-4854**

**(414) 702-0905**

# EVENT PROTOCOLS REMINDER

## REVIEW DOCUMENT

- Found on the IMSA Competitors landing page
  - <https://www.imsa.com/competitors/>

## IMPORTANT UPDATES

- Masks are required in both indoor and enclosed areas/spaces, at all times, regardless of vaccination status.
- Masks are optional while outdoors regardless of vaccination status, unless there is sustained close contact in such case mask wear would be required.
- Participants utilizing team catering should wear masks, at all times, unless seated and actively eating or drinking. Social distancing practices should also be employed.





# » INT'L PARTICIPANTS COVID-19 TESTING

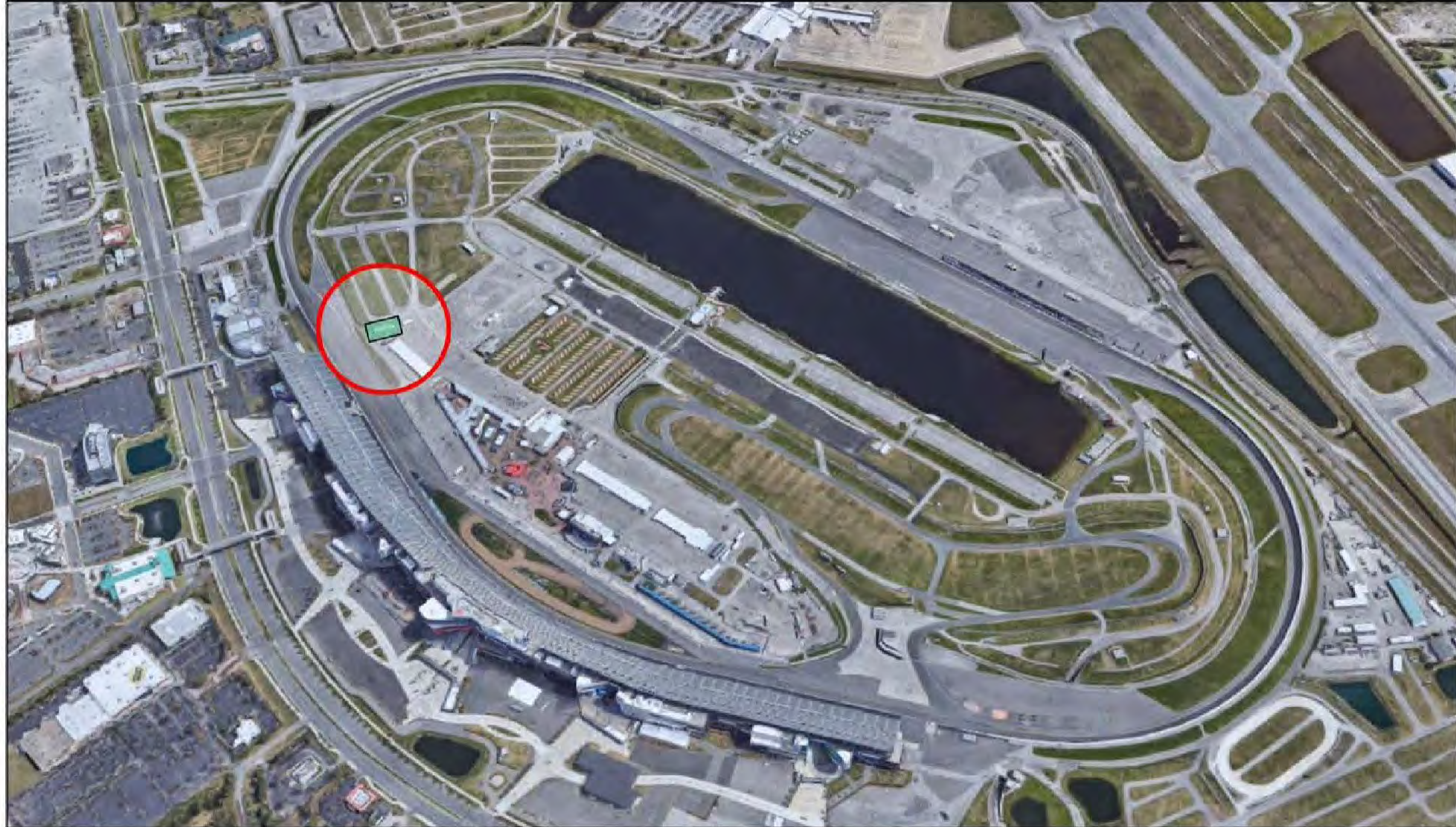


## Location

- Located in the northwest end of the IMSA WeatherTech SportsCar Championship paddock
- Building is referred to at Daytona Int'l Speedway as the "Goodyear Garage"
- IMSA with AMR directional signage will be deployed

## Notes

- Information on testing dates, times and process will be distributed by IMSA





# » TO IMSA REGISTRATION



## Directions

1. Take International Speedway Blvd. to Daytona Blvd.
2. At light, turn on to Daytona Blvd. (to enter *One Daytona* retail complex)
3. At four-way stop sign, turn right on to Checkered Flag Blvd.
4. Take first left to One Daytona public parking; park then walk to IMSA Registration

## Notes

- IMSA Registration is in the *One Daytona* retail complex adjacent to Guitar Center
- Address; 220 Daytona Blvd., Suite 220, Daytona Beach, FL 32114





# » TO LOT 6 RACE TEAM PARKING



## Directions

1. Take Midway Avenue (off International Speedway Boulevard) to Gate 70
2. Enter at Gate 70 and proceed to Lot 6 (large paved area)
3. Continue across Lot 6 towards designated parking area
4. Park in designated parking area (yellow shaded area)

## Notes

- 2022 IMSA hangtag or Daytona Int'l Speedway parking pass required for access





# » TO INFIELD RACE TEAM PARKING (RACE DAYS\*)



## Directions

1. Take Midway Avenue (off International Speedway Boulevard) to Gate 70
2. Enter at Gate 70, turn right, and proceed along access road towards Turn 4 Tunnel
3. Enter Turn 4 Tunnel and proceed to designated infield parking area
4. Park in designated parking area (yellow shaded area)

## Notes

- Daytona Int'l Speedway infield parking pass required for entry
- IMSA hangtags will not grant infield parking access

\*Follow this route on; 1/27, 1/28, 1/29 & 1/30





# SPEEDWAY TURN 4 TUNNEL HOURS

- Opens one (1) hour prior to published garage opening
- Closes one (1) hour after published garage hours
- When closed, use gate 40 (Daytona Speedway Turn 1 tunnel)



# ADDITIONAL ITEMS

- **TRACK WALK**

- TRACK WALK - Limited Access, Walk Only - Pit Lane/Infield to Turn 6, Trams on Oval. Must begin in a timely manner as on the Schedule/SR. Please maintain social distancing and proper PPE and minimize the number of participants as much as possible.

- **SPOTTER LOCATION**

- Spotter roof access stickers are available from the Series Administrator in the respective Series Transporters. Spotters must only use the spotter route and designated elevator per the Map. Spotters must use only the designated area in the tower pressroom or the spotting deck on the Race Control tower roof. Respect the facility. Masks must be worn at all times when indoors. Tape or markings to “save space” are prohibited. Space indoors is for working spotters. “Camping” or sleeping in the media center is prohibited. Spotters are responsible for their own arrangements and are requested to respect any media operating in the tower pressroom.



# » SPOTTER ROUTE/PARKING



## Directions

1. Take access road behind speedway Tickets & Tours building (adjacent to Turn 4 Tunnel)
2. Proceed under stadium on service drive ("RF" sticker required for entry)
3. Park in reserved spotter area under stadium (spaces 82a - 92c located on service drive)
4. Take stairwell to lower level then service elevator to spotters' area on roof

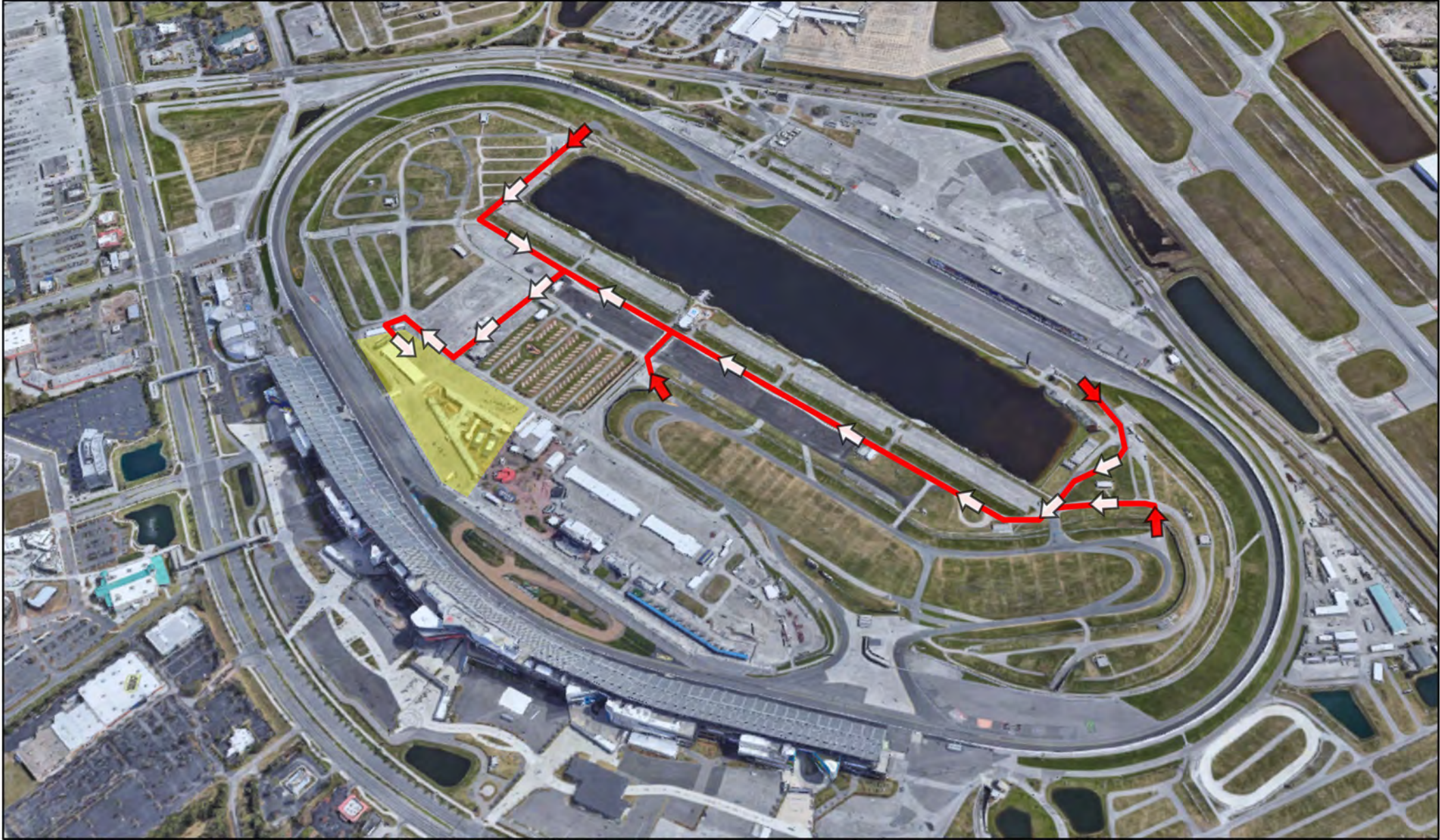
## Notes

- Parking will be strictly enforced; park in aforementioned reserved spotter area
- "RF" (roof access) sticker required for spotter area access





# ▶▶ DAMAGED CAR RETURN TO YELLOW GARAGE





# EVENT INFORMATION

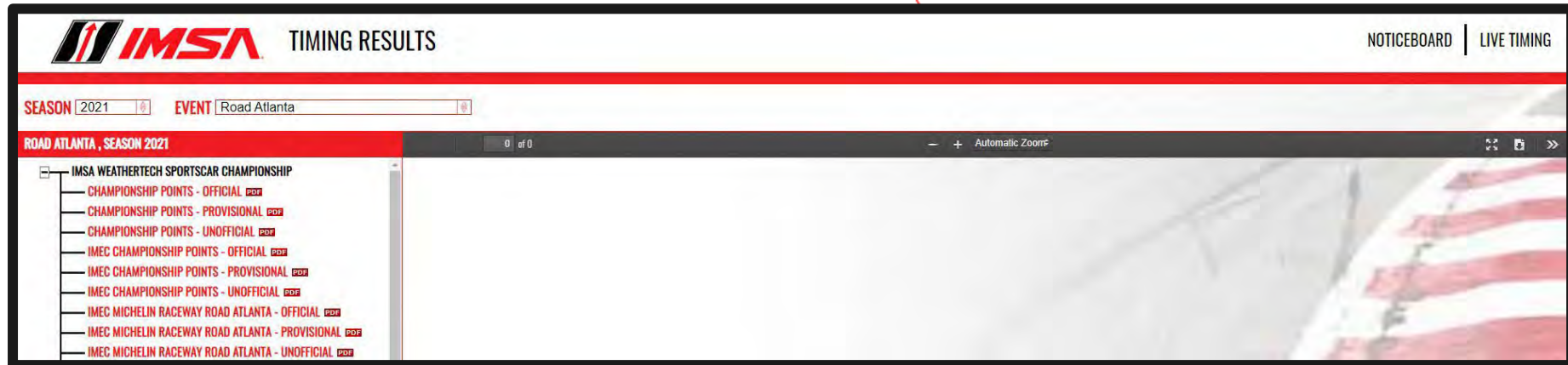
## Useful resources

### IMSA Competitor Landing Page:

<https://www.imsa.com/competitors/>

- Team Portal
- SR
- Safety Inspection Schedule
- Marketing & Branding Page

IMSA Notice Board: <http://results.imsa.com/>



The screenshot displays the IMSA Timing Results website. At the top left is the IMSA logo, followed by the text "TIMING RESULTS". On the top right, there are links for "NOTICEBOARD" and "LIVE TIMING". Below the header, there are dropdown menus for "SEASON" (set to 2021) and "EVENT" (set to Road Atlanta). The main content area is titled "ROAD ATLANTA, SEASON 2021" and shows a list of links for various championship points, including "IMSA WEATHERTECH SPORTSCAR CHAMPIONSHIP" and "IMEC CHAMPIONSHIP POINTS". The right side of the page is partially obscured by a large, faded image of a race car.



# MERG

## During Event uses

- Engine Change
- Discontinue participation in Event before Race

## After Qualifying

- Request to change one (1) tire
- Notification of more than one (1) tire change
- Nominate Starting Driver within 30 minutes if you did not participate in qualifying
- Request to change Starting Driver

## During Race

- Retire from Race

# TECHNICAL ITEMS

## DATA STICKS

- Issued during Safety Inspection
- Entrants must present assigned data stick to the designated Download Station within thirty (30) minutes of the completion of each session
- Download Station is located outside of the IMSA Engineering Trailer
- The Entrant Representative is no longer required to sign off on the data offload as per previous procedures
- Review the bulletins and regulations which specify when data sticks are due



# PIT/GARAGE VEHICLES (SSR 20.3.4)

- Permitted types

- Golf Carts
- Tuggers
- ATVs



- Prohibited types

- Scooters
- EV Cycles/Scooters
- Motorcycles
- Bicycles
- Skateboards
- Rollerblades
- Drones
- Other non-motorized transportation



# » PIT LANE FLOW



## Traffic Flow

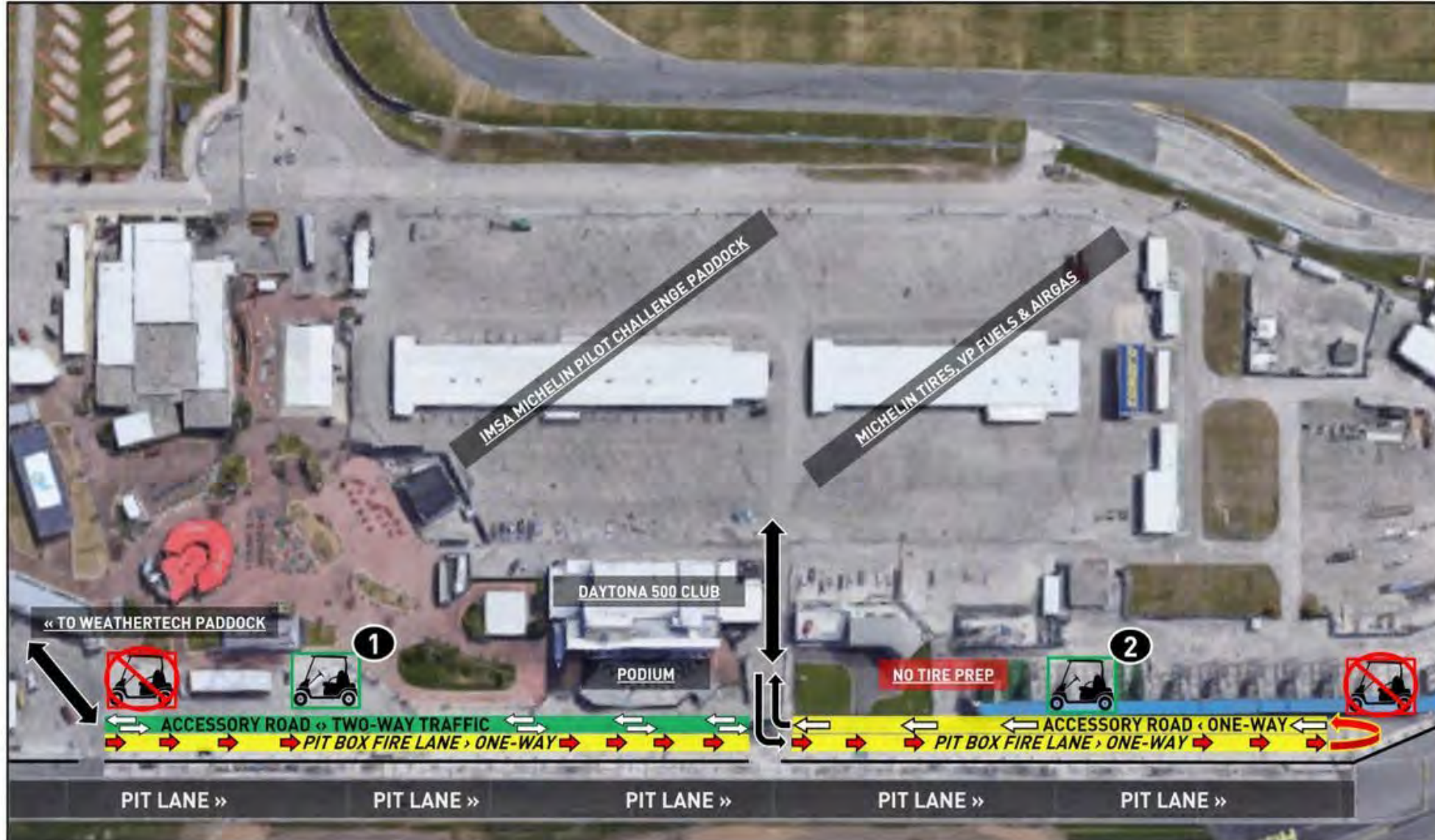
- Traffic flow behind pit boxes is one-way towards pit-out
- Utilize accessory roads to reach required entry & exits

## Golf Cart / Tugger Parking

1. Parking is allowed; must not encroach or block fire lane
  2. Parking is allowed left fence of return road only; must not block fire lane
- Park only in your team's garage/paddock area or your team's pit lane footprint

## Tire Prep

- Tire prep is prohibited at any location other than your team's garage/paddock area or within your pit box





**NOT PERMITTED**



## **BY ORDER OF FIRE MARSHAL**

- CARTS/TUGGERS MUST BE PARKED WITHIN THE TEAM'S ASSIGNED PIT BOX SPACE OR IN MARKED AREAS WHERE CART/TUGGER PARKING IS PERMITTED.
- NOTHING PERMITTED TO EXTEND OVER YELLOW LINES INTO FIRE LANE
- CARTS/TUGGERS MAKING DELIVERIES MUST QUICKLY DROP & MOVE OUT OF PIT LANE
- CARTS/TUGGERS ARE PERMITTED TO PARK TO THE RIGHT SIDE OF PIT OUT RETURN ROAD (MUST LEAVE THRU LANE)



**NOT PERMITTED**

**NOT PERMITTED**



# PIT LANE MOVEMENT

- **TRAFFIC FLOW**
  - **ENTERING THE TRACK DURING PRACTICE**
    - Cars are permitted to line up at pit exit at the beginning of the session and during red flags
    - Cars choosing to remain in pit box must wait until released by Race Control
  - **ENTERING THE TRACK DURING QUALIFYING**
    - Cars must not line up at pit exit
    - Cars must wait to release from their pit boxes to the command for the green flag to begin the session, or to resume the session after a red flag
- **LINE-UP PRIOR TO GREEN FLAG IN QUALIFYING**
  - Drive Through



# PIT LANE PROCEDURES

## •REFUELING

### •REFUELING DURING PRACTICE

- During practice sessions, it is permitted to refuel using the autonomous fuel rig or approved un-pressurized container, and crewmembers must be properly attired, HOWEVER;
- Night Practice Sessions and Warm-Up sessions (where applicable) are considered "race conditions" and refueling is permitted only using the autonomous fuel rig and crewmember must be properly attired

### •SAFETY EXPECTATIONS

### •PRE-RACE EXPECTATIONS

### •POST-RACE EXPECTATIONS

# PROCEDURAL ITEMS

## PRE-RACE

- Autograph Session from 10:30 am – 11:15 am
- Refer to MXM
  - No Recon Lap
  - Cars must present to the False Grid on their race starting tires and fuel. There is no opportunity to go to the pit box prior to the race start without penalty.
- Driver Introductions
  - ALL GT Drivers meet behind the stage on Pit Lane – 11:50 AM
  - ALL Prototype Drivers walk with the car from Skid Pad - 12:10 PM

## POST-RACE

- Refer to the MxM
- Overall winning car to VL
- All other podium cars to the Fan Zone

## SERVICE ON THE GRID

- Once the Car arrives on the starting grid for the Open Grid - Fan Walk, the Team may service the Car until the ten (10) minute notification. Battery powered wheel guns are permitted. Refueling is prohibited.



# IMSA TRACK SERVICES

## IMSA CHASE VEHICLE LOCATIONS

- Chase 1 – East Horseshoe
- Chase 2 – Pit Entry
- Chase 3 – Speedway 1A
- 6 additional local fire/rescue - Turn 1 island, Turn 3, Turn 5, Speedway Turn 2, Exit Turn 7 bus stop, Speedway Turn 4

## ON TRACK ASSISTANCE

- Communication with Track Services Medic
- Neutral and power shut off
- Follow direction on scene Track Services
- Chase 2 or Ambulance to transport
- Face masks in Chase 2 and Ambulance

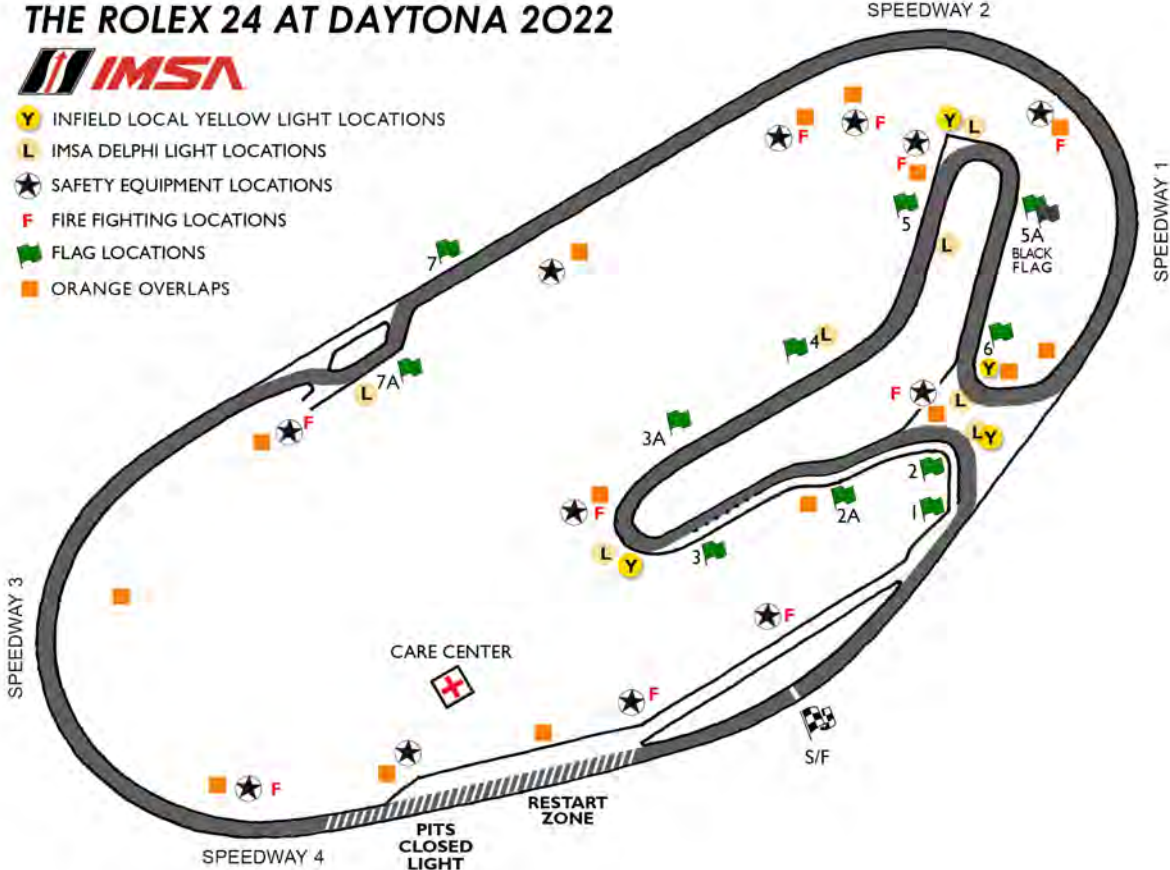


# OFFICAL TRACK MAP

## THE ROLEX 24 AT DAYTONA 2022



- Y INFIELD LOCAL YELLOW LIGHT LOCATIONS
- L IMSA DELPHI LIGHT LOCATIONS
- ★ SAFETY EQUIPMENT LOCATIONS
- F FIRE FIGHTING LOCATIONS
- 🚩 FLAG LOCATIONS
- 🟠 ORANGE OVERLAPS





# RACE CONTROL

## RACE CONTROL NOTIFICATION SYSTEM (INSTANT MESSAGE)

- Provide specific information for inquiry and must include time of day
- Race Control does not respond to blue flag/traffic requests
- Race Control does not respond to requests regarding other competitors

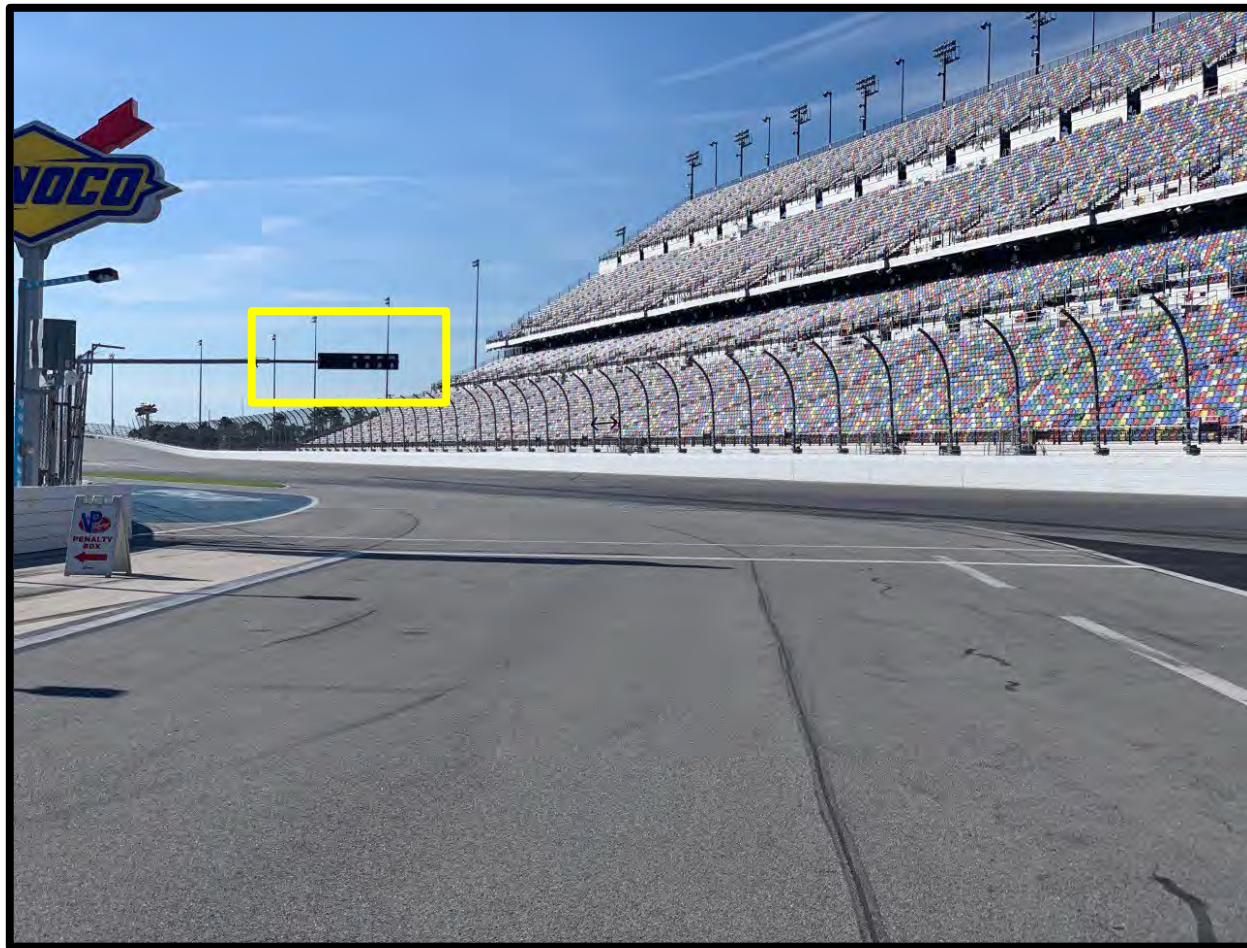
## DRIVE TIME

- Inquiries should be sent to Scoring, NOT Race Control
- Please review Drive Time regulations to understand calculations

## PACK UP GAPS

- Drivers leaving gaps under full course yellows may be penalized and/or other competitors may be permitted to overtake

# PENALTY BOX & PIT EXIT CLOSED LIGHT



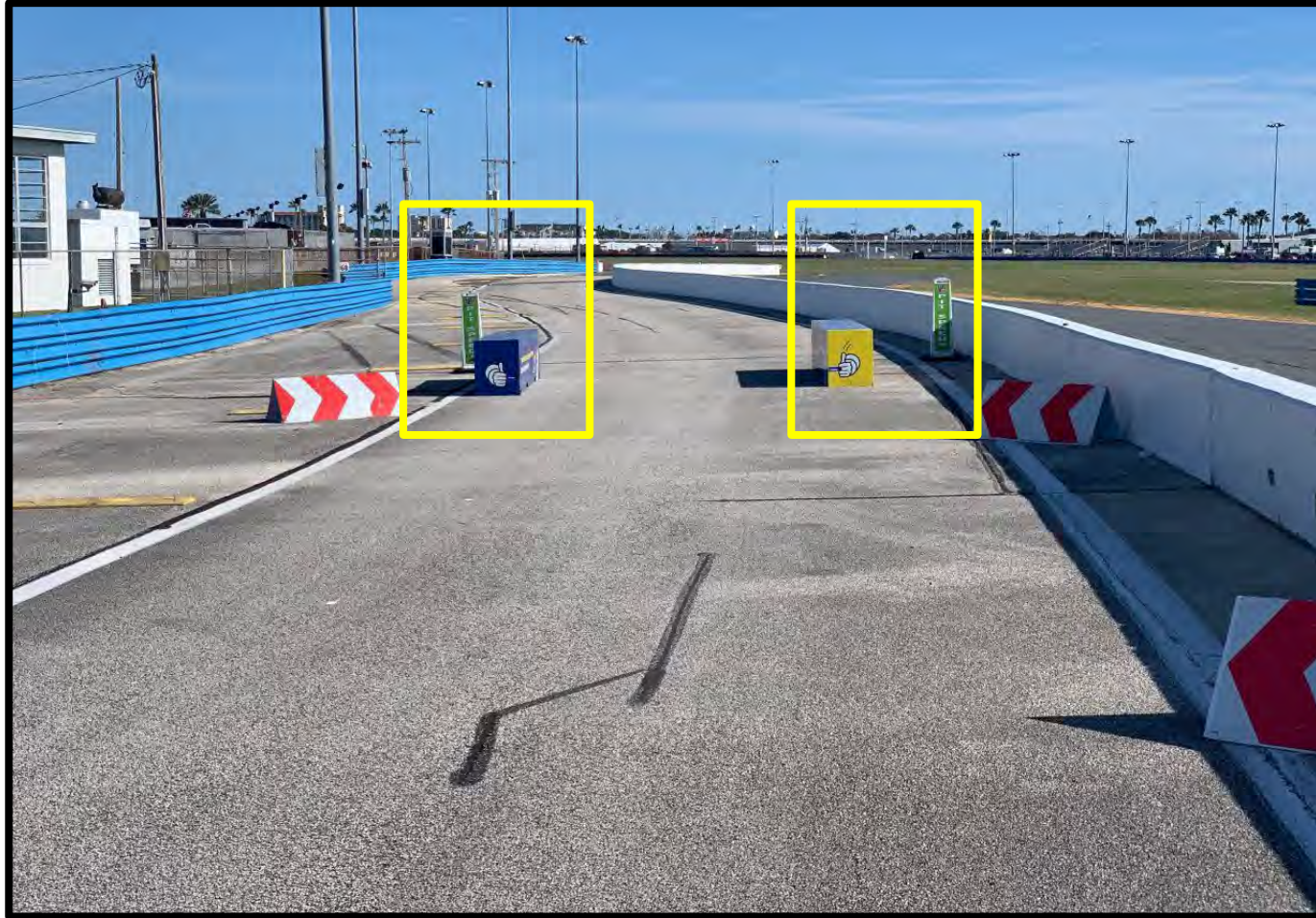


# PIT EXIT

- Cars exiting the pits must remain left to enter the pit exit chute and merge with race traffic between turns 2 and 3.



# PIT SPEED / RFID READERS





# PIT EXIT MERGE

- Cars exiting the pits must remain 4 wheels left of the solid line. Cars on track are permitted to cross the solid line but must not encroach on cars exiting the pits.



# PIT EXIT MERGE





# ORANGE OVERLAPS

- Overlaps are marked throughout the circuit and indicated on the Official Track Map. Competitors with disabled cars on track are requested to stop at those whenever unable to continue to the pits.



# ORANGE OVERLAPS





# ORANGE OVERLAPS



# ORANGE OVERLAPS





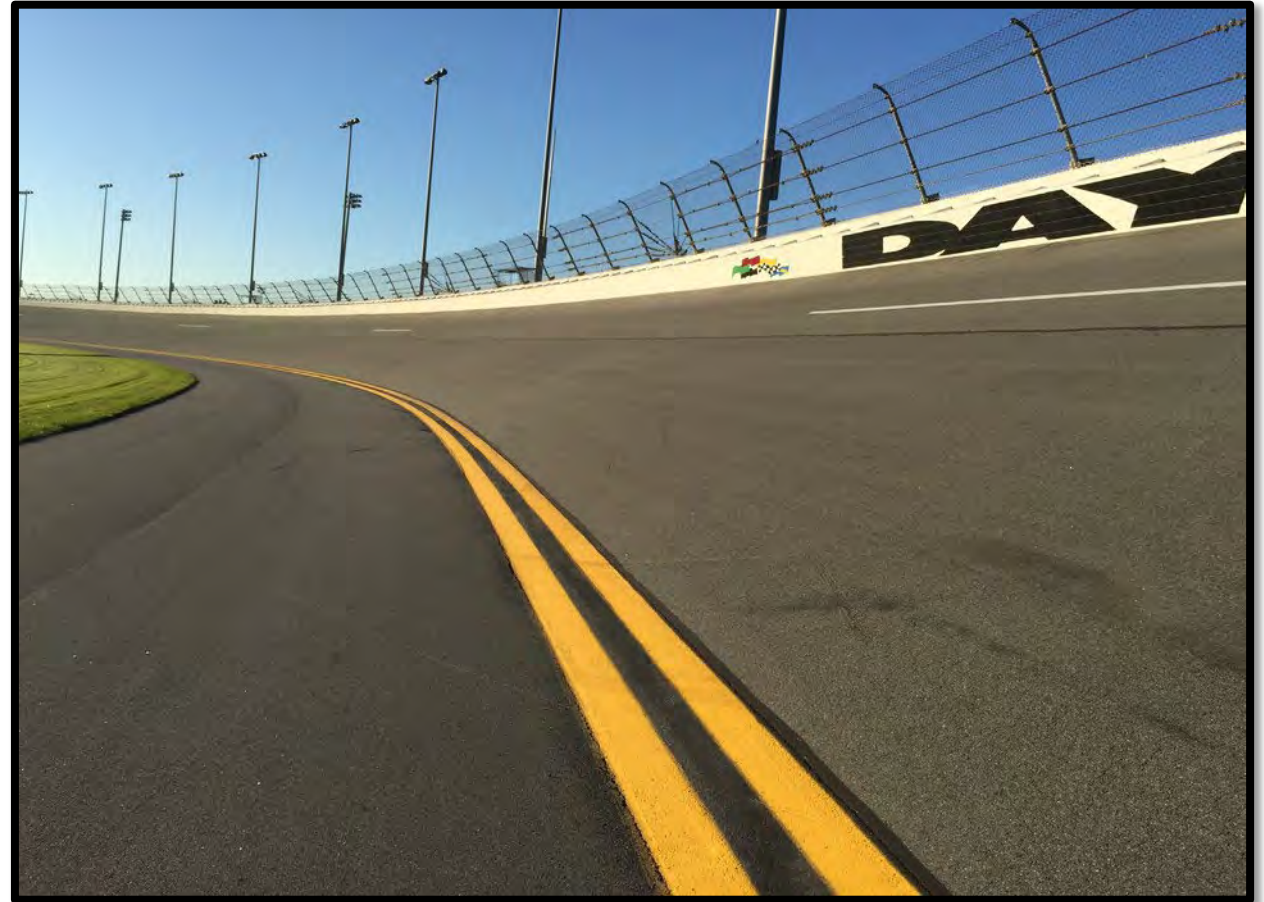
# SPEEDWAY TRAFFIC

## BOTTOM LANE

- Slower cars stay left

## TOP LANE

- Quicker cars (passing) stay right



# BUS STOP





# BUS STOP



# BUS STOP





# BUS STOP CURBING 1



# BUS STOP CURBING 2





# BUS STOP CURBING 3



# BUS STOP CURBING 4





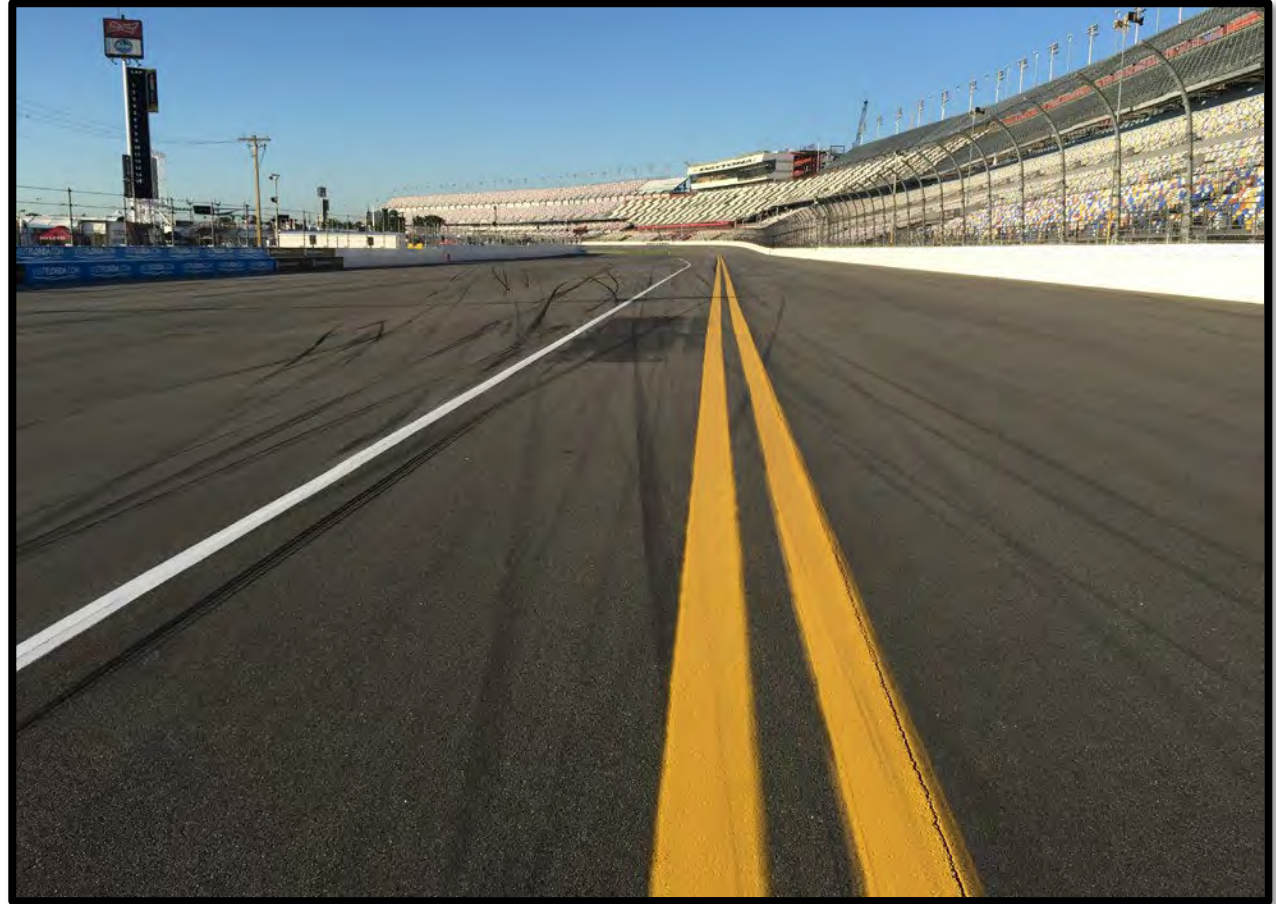
# TURN ONE RUNOFF

- **RE-ENTER SAFELY AT TURN 2**
- **SHORT CUT TO TURN 6**
  - **MUST RE-ENTER SAFELY**
  - **LAP DOES NOT COUNT**



# PIT ENTRY

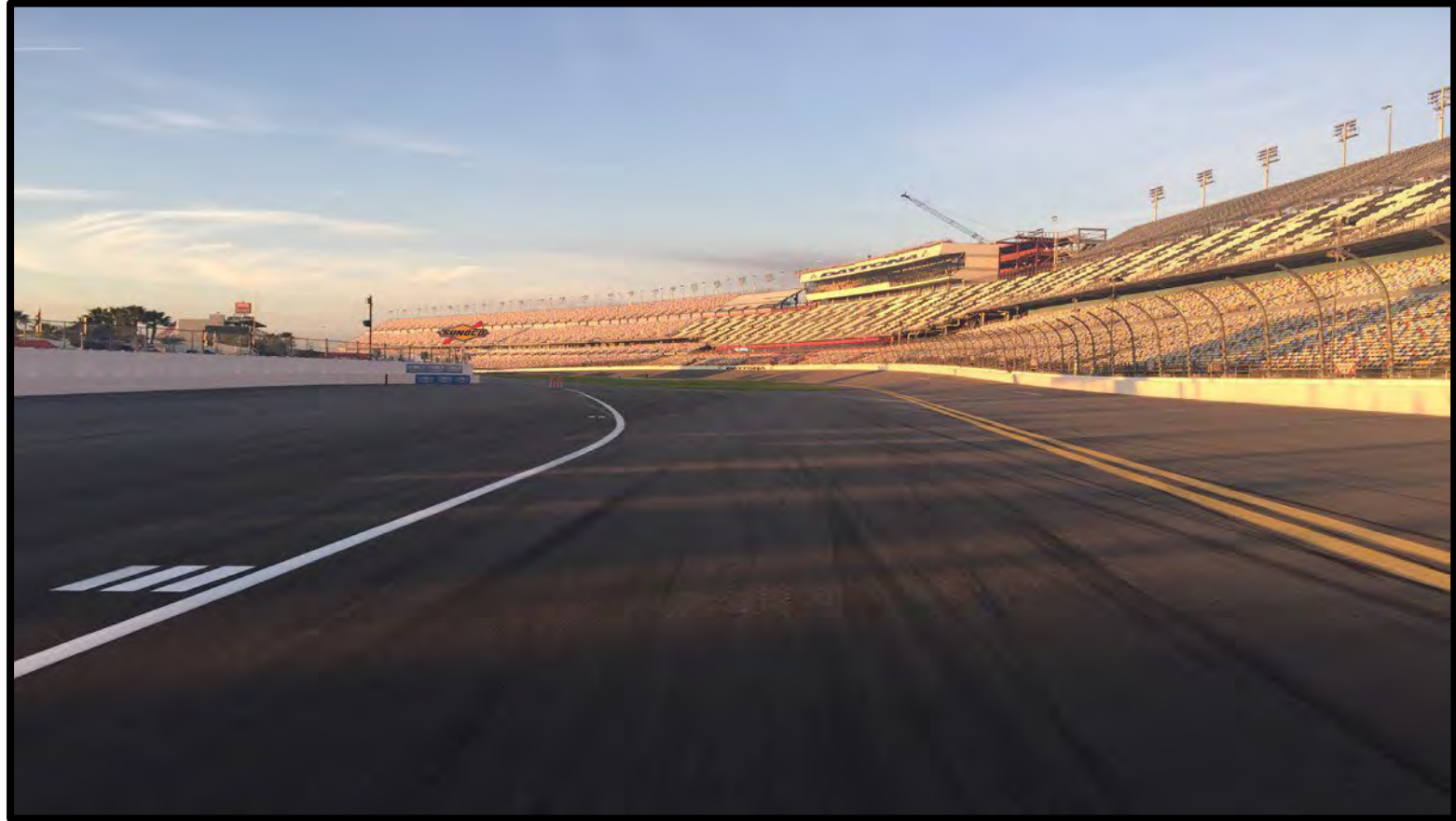
- Decelerate left of the double solid lines whenever entering the pits.
- Cars unable to maintain speed are permitted and encouraged to drive below this line.



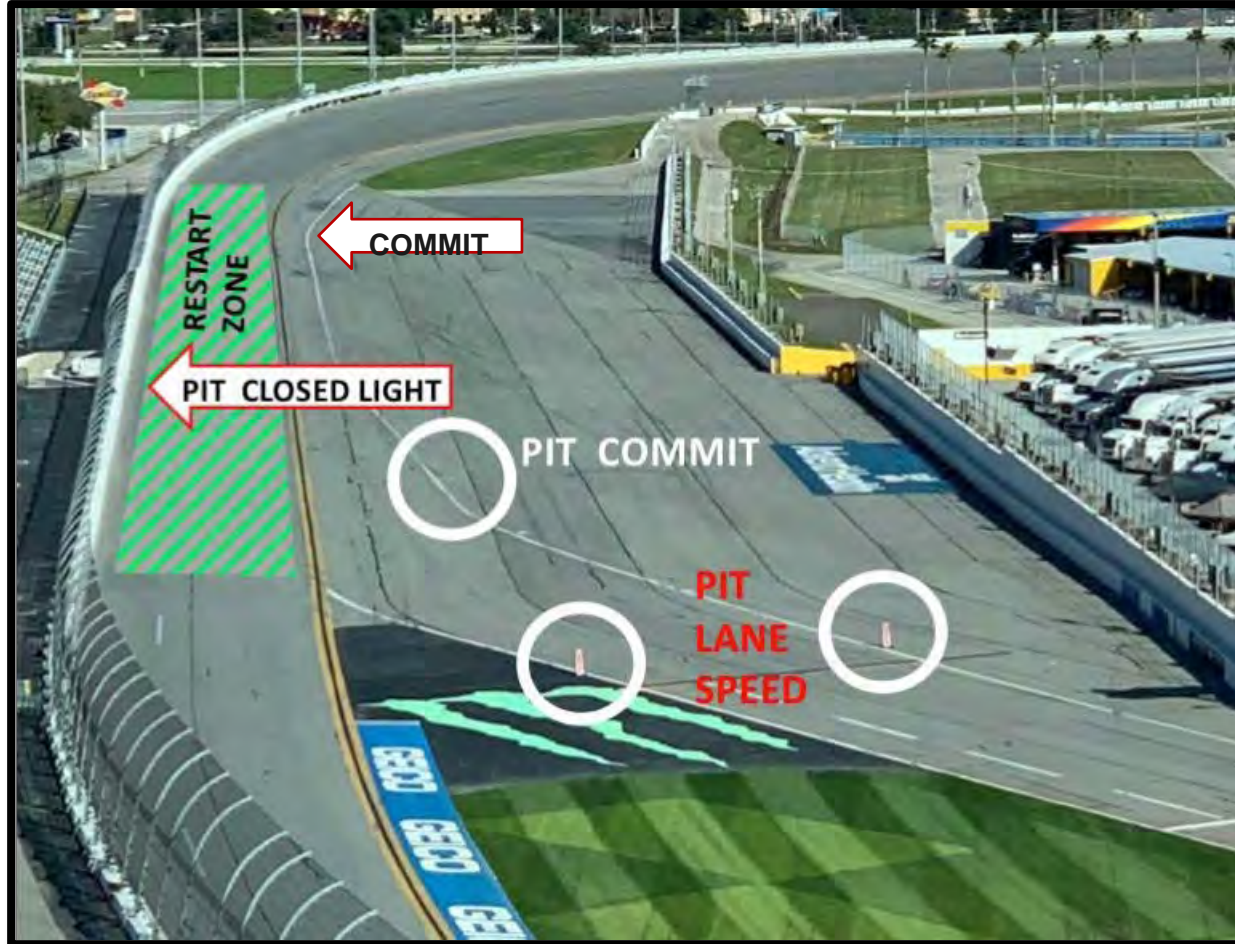


# PIT COMMIT

- Cars that are 4 wheels left of the solid double yellow lines AND are up to the 3 hash marks on the left are considered to be committed to the pits as it pertains to Full Course Yellows.

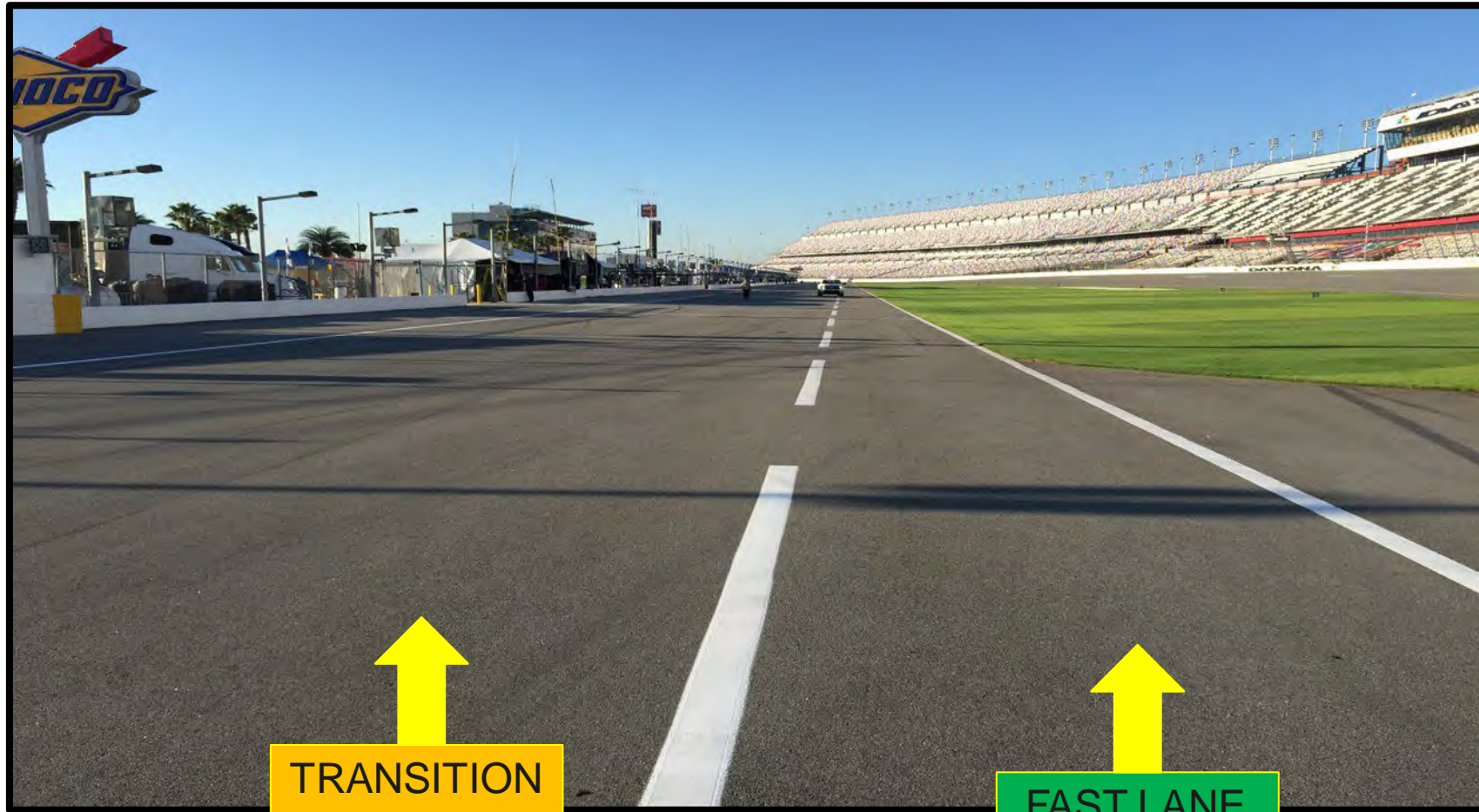


# PIT COMMIT





# PIT LANE PROTOCOL



TRANSITION  
LANE

FAST LANE

# RACE

- **Two (2) FORMATION laps**
- **Pack up first time by/Pair up out of T7 BUS STOP**
- **Stay with Safety Cars**
- **Safety Cars enter pits**
- **This is a split start**
  - THE DPI AND GT POLESITTERS WILL BE GIVEN INSTRUCTIONS PRIOR TO THE RACE
- **Acceleration point (POLESITTERS)**
- **Jump/False start Reviews**
  - Gaps
  - Timed/Early Acceleration
  - Out of Line
  - Column Passing
- **Official Race start is second time by**



# STANDARD FULL COURSE YELLOW

- **PITS CLOSED**
- **FULL COURSE YELLOW**
- **LEADER – SAFETY CAR SPEED**
- **SAFETY CAR DISPATCHED FROM TURN 3 TO OVERALL LEADER**
- **PASS-AROUND (NO TIRE SCRUBBING)**
- **PITS OPEN (PROTOTYPE)**
- **PITS OPEN (GT)**
- **EMERGENCY SERVICE CARS MUST DT (NO GUARANTEE OF YELLOW)**
  - Emergency Service Fuel Cars must fuel at first opportunity
  - Failure to perform Emergency Service Drive-Through: Stop plus 10 seconds
  - More than Emergency Service taken: Stop plus 60 seconds
- **FINAL WAVE-BY (NO TIRE SCRUBBING)**
- **DPI CLASS SPLIT (NO TIRE SCRUBBING)**
- **PROTOTYPE CLASS SPLIT (NO TIRE SCRUBBING)**
- **RESTART**
- **STANDARD FCY NOT IN EFFECT DURING FINAL 30 MINUTES OF A RACE**

# SHORT FULL COURSE YELLOW

- First FCY within 15 minutes of start OR restart from a Standard FCY OR DURING final 30 minutes of a Race
  - **PITS CLOSED**
  - **FULL COURSE YELLOW**
  - **LEADER – SAFETY CAR SPEED**
  - **SAFETY CAR DISPATCHED FROM TURN 3 TO OVERALL LEADER**
  - **PASS-AROUND (NO TIRE SCRUBBING)**
  - **PITS REMAIN CLOSED**
  - **NO FINAL WAVE-BY**
  - **DPI CLASS SPLIT (NO TIRE SCRUBBING)**
  - **PROTOTYPE CLASS SPLIT (NO TIRE SCRUBBING)**
  - **PITS OPEN AFTER ALL CARS PASS PIT-IN COMING TO THE RESTART**
  - **RESTART**
  - **EMERGENCY SERVICE CARS MUST DT**
  - **EMERGENCY SERVICE FUEL CARS MUST FUEL AT FIRST OPPORTUNITY**
  - **FAILURE TO PERFORM EMERGENCY SERVICE DRIVE THROUGH: STOP PLUS 10 SECONDS**
  - **MORE THAN EMERGENCY SERVICE TAKEN: STOP PLUS 60 SECONDS**



# ON TRACK

- **RESTARTS**
- **LOCAL YELLOWS**
- **FLASHING LIGHTS**
- **BLOCKING / DEFENDING INCREASE RESPONSIBILITY**
  - Proactive vs. Reactive
- **CONTACT**
  - Responsibility
  - Class racing
  - Multi-class incidents
- **MULTI-CLASS COEXISTENCE**
  - Awareness
  - Coexist

# RACE CONTROL

- **COMMUNICATION**
  - Normal Radio Communications
  - Instant Messenger
- **REVIEW PROCESS**
  - Data
  - Video
- All incidents are reviewed for the purpose of apportioning individual responsibility that may result in penalties. Race how you expect to be raced and acknowledge that this is the longest race of the season and there are numerous new competitors. Best of luck and make it a great race!



# SPORTING REGULATIONS NOTES

- PLEASE REFER TO 2022 SPORTING REGULATIONS FOR SPECIFIC LANGUAGE, THIS IS ONLY A PARTIAL LIST OF CHANGES FROM 2021:
  - **TRACK WALK**
  - **TEAM DISCRETION FOR TIRE CHOICE, UNLESS WET DECLARATION**
  - **CHANGE STARTING DRIVER IS GRID POSITION PENALTY & LOSS OF QUALIFYING POINTS**
  - **CHANGE MORE THAN 1 STARTING TIRE**
  - **NO RECON LAPS PLANNED FOR 2022**
  - **GTD PRO AND GTD QUALIFYING**
  - **GTD PRO AND GTD TREATED AS SEPARATE CLASSES FOR ALL OTHER PROCEDURES/RULES**
  - **PIT-IN LOOP**
  - **PIT-OUT LOOP**
  - **NON-RESPONSIVE CARS DURING PROCEDURES**
- Questions?



# ROLEX 24 AT DAYTONA



SAT | JAN 29 | 1:30PM ET  
**LIVE ON NBC**





**THANK YOU**