

School Malaise Trap Program

Species Image Library

The images of the species collected in your Malaise trap are shown below. A single representative for each species was selected to be photographed; in some cases, only a damaged specimen was available.

Re-render images : per page

300 Images Per Page - Pages : 1



BIOUG05656-A03 [Lateral]
Andrena frigida



BIOUG05676-C01 [Dorsal]
Nomada



BIOUG05509-F06 [Lateral]
Braconidae



BIOUG05583-F03 [Lateral]
Aphidius ervi



BIOUG05507-D11 [Lateral]
Diapriidae



BIOUG05502-B08 [Lateral]
Formica glacialis



BIOUG05634-D06 [Lateral]
Myrmica rubra



BIOUG05676-B12 [Lateral]
Lasioglossum rufitarse



BIOUG05555-C01 [Lateral]
Platygasteridae



BIOUG05520-C07 [Lateral]
Diboldia borealis



BIOUG05680-B02 [Lateral]
Longitarsus



BIOUG05520-C10 [Dorsal]
Phyllotreta striolata



BIOUG05501-G04 [Dorsal]
Enoclerus nigripes



BIOUG05501-A01 [Lateral]
Delia antiqua



BIOUG05501-A02 [Lateral]
Hylemya



BIOUG05501-D07 [Lateral]
Pollenia pediculata



BIOUG05518-B06 [Lateral]
Pollenia rudis



BIOUG05528-G08 [Lateral]
Cecidomyiidae



BIOUG05507-C10 [Lateral]
Cecidomyiidae



BIOUG05503-B05 [Lateral]
Chironomidae



BIOUG05503-A11 [Lateral]
Chironomidae



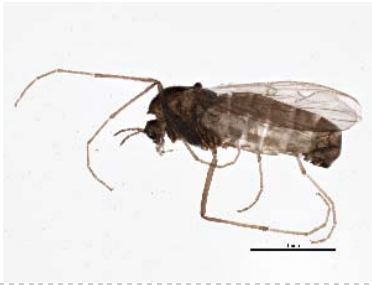
BIOUG05508-D08 [Lateral]
Chironomidae



BIOUG05680-F01 [Lateral]
Chironomidae



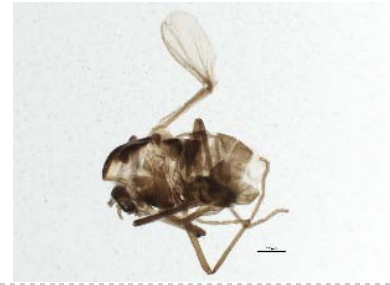
BIOUG05503-H02 [Lateral]
Chironomidae



BIOUG05503-A08 [Lateral]
Bryophaenocladus



BIOUG05522-B11 [Lateral]
Chironomus pseudothummi



BIOUG05519-H08 [Lateral]
Gymnometrioctenemus brumalis



BIOUG05572-G05 [Lateral]
Heterotrissocladius



BIOUG05516-G04 [Lateral]
Psectrocladius cf. limbatellus



BIOUG05503-E12 [Lateral]
Smittia



BIOUG05503-E10 [Lateral]
Smittia



BIOUG05503-C01 [Lateral]
Smittia



BIOUG05503-A03 [Lateral]
Smittia



BIOUG05535-E10 [Lateral]
Ephyridae



BIOUG05521-A04 [Lateral]
Phoridae



BIOUG05535-A04 [Lateral]
Phoridae



BIOUG05522-C01 [Lateral]
Megaselia



BIOUG05501-A03 [Lateral]
Scathophaga furcata



BIOUG05503-A10 [Lateral]
Sciaridae



BIOUG05503-C12 [Lateral]
Sciaridae



BIOUG05681-A02 [Lateral]
Sciaridae



BIOUG05503-F12 [Lateral]
Scatopsciara



BIOUG05501-D08 [Lateral]
Eupeodes americanus



BIOUG05639-G09 [Lateral]
Phorocera obscura



BIOUG05511-C01 [Lateral]
Agonopterix argillacea



BIOUG05713-A12 [Dorsal]
Eustala anastera



BIOUG05567-D11 [Lateral]
Erigone atra



BIOUG05660-G11 [Dorsal]
Cheiracanthium mildei



BIOUG05510-C02 [Dorsal]
Philodromus cespitum



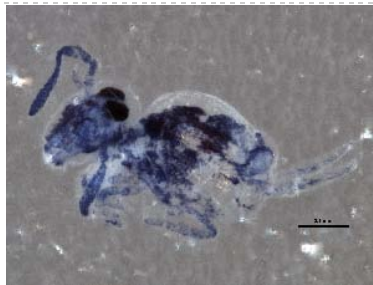
BIOUG05516-D01 [Lateral]
Entomobrya



BIOUG05516-D06 [Lateral]
Entomobrya nivalis



BIOUG05581-E05 [Lateral]
Orchesella cincta



BIOUG05516-E08 [Lateral]
Deuteromnithurus



BIOUG05512-D01 [Dorsal]
Erythroneura rubrella



BIOUG05502-A09 [Dorsal]

Kleidocerys



BIOUG05680-A04 [Lateral]

Psyllidae